

# THE VILLA NEWS AND RECORD

No. 474 Vol. XII COPYRIGHT.

JANUARY 28, 1922.

Registered as  
a Newspaper.

Twopence.

## THE ASTON HOTEL,

Opposite Tram Terminus and Witton Railway Station.

Adjoining the Villa Ground. **WITTON ROAD.** Adjoining the Villa Ground.

The most complete and up-to-date Hotel in Aston.



Wines and Spirits of highest quality. All noted brands in stock.  
Every Accommodation on the Spot. Motor Garage and Stabling.

— ANSELL'S ASTON ALES. —



**ASTON VILLA FIRST TEAM.**

1921	Opposition	Result	1921-22		1920-21	
			For	Agst	For	Agst
Aug 27	Manchester City	L	1	2	1	3
29	Cardiff City	L	2	1	—	—
Sept 3	Manchester City	L	4	0	3	1
5	Cardiff City	L	4	0	—	—
10	Preston North End	L	0	1	1	6
12	Blackburn Rovers	L	1	1	3	0
17	Preston North End	L	2	0	1	0
24	Tottenham Hotspur	L	1	3	2	1
Oct 1	Tottenham Hotspur	L	2	1	4	2
8	West Bromwich Albion	L	1	0	1	2
15	West Bromwich Albion	L	0	1	0	0
22	Middlesbrough	L	0	5	4	1
29	Middlesbrough	L	6	2	0	1
Nov 6	Bradford City	L	2	3	0	3
9	Oxford University	F	11	2	—	—
12	Bradford City	L	7	1	1	2
19	Manchester United	L	3	1	3	4
26	Manchester United	L	0	1	3	1
Dec 3	Liverpool	L	1	1	0	2
10	Liverpool	L	0	2	1	4
14	Army F.A.	F	3	1	—	—
17	Newcastle United	L	2	1	1	2
24	Newcastle United	L	1	0	0	0
26	Sheffield United	L	3	2	0	0
27	Sheffield United	L	5	3	4	0
31	Burnley	L	1	2	1	7
1922						
Jan 7	Derby County	E.C.	6	1	—	—
14	Burnley	L	2	0	0	0
21	Everton	L	2	3	1	1
28	Everton (postponed)	L	—	—	—	—
28	Luton Town	E.C.	—	—	—	—
Feb 4	Sunderland	L	—	—	1	0
8	Everton	L	—	—	1	3
11	Sunderland	L	—	—	1	5
18	Huddersfield Town	L	—	—	0	1
18	Huddersfield Town	E.C.	—	—	—	—
25	Huddersfield Town	L	—	—	0	0
Mar 4	Birmingham	L	—	—	—	—
4	Birmingham	E.C.	—	—	—	—
11	Birmingham	L	—	—	—	—
18	Arsenal	L	—	—	5	0
25	Arsenal	L	—	—	1	0
25	Arsenal	E.C.	—	—	—	—
April 1	Blackburn Rovers	L	—	—	1	0
8	England v. Scotland	Home	—	—	—	—
	(At Villa Park)					
14	Chelsea	L	—	—	1	5
15	Bolton Wanderers	L	—	—	2	0
17	Chelsea	L	—	—	3	0
22	Bolton Wanderers	L	—	—	0	5
29	Oldham Athletic	L	—	—	3	0
29	Oldham Athletic	E.C.	—	—	—	—
May 6	Oldham Athletic	L	—	—	1	1

F—Friendly. L—League. E.C.—English Cup.

**ASTON VILLA RESERVE TEAM.**

1921	Opposition	Result	1921-22		1920-21	
			For	Agst	For	Agst
Aug 27	Stoke	L	2	3	—	—
29	Manchester City	L	3	2	1	4
Sept 3	Stoke	L	1	5	—	—
5	Manchester City	L	1	0	2	2
10	Preston North End	L	2	1	0	1
17	Preston North End	L	0	2	1	2
19	Huddersfield Town	L	4	2	2	1
24	Bradford City	L	2	1	1	5
24	Birmingham Wks. Assn.	F	1	5	—	—
26	Bradford City	L	0	1	2	0
Oct 1	—	—	—	—	—	—
8	West Bromwich Albion	L	1	0	—	—
15	West Bromwich Albion	L	0	1	—	—
22	Port Vale	L	1	1	6	6
29	Port Vale	L	0	0	1	2
Nov 5	B'ham Wednesday F.A.	F	6	2	—	—
5	Bury	L	0	3	1	0
12	Bury	L	0	1	3	1
16	B'ham University 3, Aberystwyth Univ. 4	F	—	—	—	—
	(British Legion Unemployment Relief Fund)					
16	Princess Mary's Convalescent Centre	F	11	0	—	—
19	Manchester United	L	5	2	0	0
26	Manchester United	L	1	1	2	2
Dec 3	Liverpool (postponed)	L	—	—	—	—
7	Liverpool	L	1	0	3	2
8	Saltley College	F	11	0	—	—
10	Liverpool	L	1	2	6	1
17	Wolverhampton Wand.	L	0	1	—	—
24	—	—	—	—	—	—
26	Sheffield United	L	0	2	—	—
27	Sheffield United	L	2	1	—	—
31	Burnley	L	4	0	2	0
Jan 7	Wolverhampton Wand.	L	1	2	—	—
14	Burnley	L	1	3	3	0
21	Oldham Athletic	L	2	2	6	0
28	Oldham Athletic	L	—	—	0	1
Feb 4	Bolton Wanderers	L	—	—	5	1
11	Bolton Wanderers	L	—	—	1	1
18	Blackburn Rovers	L	—	—	3	0
25	Blackburn Rovers	L	—	—	0	1
Mar 4	Blackpool	L	—	—	3	1
11	Blackpool	L	—	—	0	1
18	Birmingham	L	—	—	—	—
25	Birmingham	L	—	—	—	—
Apl 1	Huddersfield Town	L	—	—	1	2
8	—	—	—	—	—	—
14	Derby County	L	—	—	—	—
15	Leeds United	L	—	—	—	—
17	—	—	—	—	—	—
18	Derby County	L	—	—	—	—
22	Leeds United	L	—	—	—	—
29	Everton	L	—	—	2	8
May 6	Everton	L	—	—	0	8

F—Friendly. L—Central League.

# The Villa News and Record.

Official Journal of the Aston Villa Football Club, Limited.

Edited by HARRY H. DOE.

Directors: F. W. RINDER (Chairman), J. E. JONES (Vice-Chairman), Capt. P. W. M. BATE  
J. DEVEY, H. SPENCER. Secretary: G. B. RAMSAY.

Telegraphic Address: "VILLA," Birmingham.

Telephone: East 75.

No. 474 Vol. XII.

JANUARY 28, 1922.

Registered as a Newspaper. Twopence.

**ADVERTISEMENT RATES.**

Full Page (ordinary position) per week	£2 10 0
Half-page " " " "	1 5 0
Quarter-page " " " "	0 12 6
Eighth-page " " " "	0 7 0

Covers, Special Positions, and "Full Season" Advs. by Arrangement.

For special prices apply to G. B. RAMSAY, Secretary, or HARRY H. DOE, Villa Offices, Trinity Road, Aston.

NOTE.—The advertisements are inserted in every issue of the paper published at one inclusive charge. All prices strictly net (payable in advance). A copy of each issue will be sent to all advertisers.

**SUBSCRIPTION RATES.**

THE VILLA NEWS AND RECORD will be posted at the following rates—postage included, payable in advance:—

Two Months	4s. 0d.
Four Months	7s. 6d.
Full Season (8½ months)	12s. 6d.

The season's subscription (12s. 6d.) includes back numbers when required and when obtainable, and should be sent to Mr. G. B. Ramsay, Villa Offices, Trinity Road, Aston.

The Editor will be pleased to consider any letters or communications of interest.

All communications to be addressed to—  
HARRY H. DOE,  
Villa Offices, Aston, Birmingham.

## The Villa News and Record.

JANUARY 28, 1922.

### The Editor's Note Book.

A SURPRISE FOR THE VILLA.

WONDERFUL RALLY BY EVERTON AT GOODISON PARK.

THAT a football match is neither won nor lost "until the whistle goes" was brought home to the Aston Villa players at Goodison Park on Saturday in most dramatic fashion—and we can only hope they will profit by a very bitter experience and a keen disappointment. We have been closely following first-

class football for forty years, and we cannot recall such a sensational, nerve-racking five minutes as that brief period at Goodison Park during which the Everton team turned a deficit of two goals into a lead of three to two. We might even go so far as to say we could "hardly believe our own eyes," and we can quite understand the "doubts" with which the Birmingham public received the result. Fifty minutes after the start the Villa were leading by two goals, and to the average on-looker Everton were a beaten team. But, not so. Everton were not by any means done with, and we hasten to pay full tribute to the magnificent rally; the clever, determined, and skilful football by which they turned an apparent defeat into a glorious victory. Even up to this point, although the Villa had scored twice, Everton had played enterprising and thrustful football, and it was due in a very great measure to the exceptionally fine work of Jackson in goal that they had not penetrated the Villa defence. They had had very nearly as much of the play as our own team. Jackson played "the game of his life," and it is only his due to say it was not his fault the Villa were beaten. Personally, we do not think he had a chance with either of the shots which scored, and all three followed upon exciting scimmages in the goalmouth. Why it was we do not pretend to say, but it seemed to us the Villa halves and backs got into a tangle and "lost their heads" for the time being. At any rate they appeared quite helpless to stem the onward rush of the Everton forwards—splendidly supported by their halves, and even by "Dicky" Downs—and they were left guessing. That is the only explanation we can give, but it ought to be a useful lesson

# FOOTBALL AT VILLA PARK.

SATURDAY NEXT, FEBRUARY 4th, 1922.

Central League—Match No. 32.

## BOLTON WANDERERS RES. v. ASTON VILLA RES.

Kick-off at 3 p.m.

Admission as usual.

WEDNESDAY, FEBRUARY 8th, 1922.

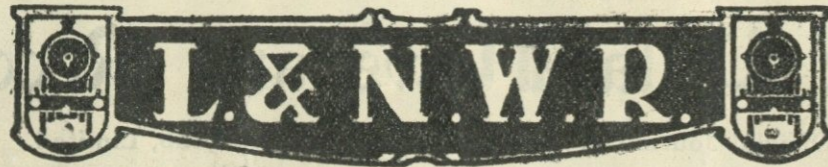
The League Championship—Match No. 33.

## EVERTON v. ASTON VILLA.

Kick-off at 3 p.m.

Admission as usual.





# MANCHESTER RACES.

Wednesday & Thursday, February 1st & 2nd.

An Express Day Excursion will run on both dates to MANCHESTER (London Road) and CROSS LANE STATION.

	A.M.	3rd CLASS RETURN FARE.	
Coventry ... .. dep.	8.20	20/3	Bookings also from other district stations.
BIRMINGHAM (New St.) ,,	9.15	16/9	
Smethwick ... .. ,,	8.47	16/-	
Dudley Port ... .. ,,	9.30	15/3	
Wolverhampton ... .. ,,	9.45	14/3	

Passengers return same evening from Cross Lane at 4.15 p.m., and from Manchester (London Road, South Junction Station) at 4.27 p.m.

# EXCURSIONS TO LONDON.

On Saturdays, February 4th and 18th.

Corridor Express Day Excursions will run to London (Euston) with bookings to NORTHAMPTON.

	A.M.	3rd CLASS RETURN FARE TO LONDON.
Wolverhampton ... .. dep.	7.34	18/-
Dudley Port ... .. ,,	7.45	17/3
Smethwick ... .. ,,	8.3	16/9
BIRMINGHAM (New St.) ,,	8.20	16/3
Coventry ... .. ,,	8.45	13/9

Passengers return same evening from London (Euston) at 12.30 night, and from Northampton at 1.50 night.

FOR FULL PARTICULARS SEE SMALL BILLS AT STATIONS AND AGENCIES.

# ENGLISH CUP FINAL AT STAMFORD BRIDGE, LONDON, SATURDAY, APRIL 29th.

Secretaries of Parties are invited to communicate with the District Superintendent at New Street Station, Birmingham, for information regarding L. & N.W.R. Excursions, Saloons, etc., in connection with the above event.

Euston Station,  
January, 1922

ARTHUR WATSON,  
General Manager.

to our boys, and, if it is, the experience, bitter though it was, will not be without its good points. Let them remember that even though they may be leading by a couple of goals it is never wise to "take things easy," as several of our men appeared to do on Saturday. Football lasts ninety minutes, and, as Bernard Shaw says, and as the Villa learned to their discomfiture, "you never can tell" what may happen.

To-day we resume the fight for the English Cup, and Villa folk will have an opportunity of seeing Luton Town, who have never yet been seen in Birmingham. That they are a team of great possibilities is beyond all doubt, and it will never do for the Villa to think because their opponents are only in the Third Division of the League that they have an easy task on. Their business is to play all out, and treat Luton with the respect to which their past achievements entitle them. Elsewhere in this issue will be found a brief history of Luton Town football club, together with portraits and biographies of their players. The Villa have done their training at home. On Monday they paid one of their customary visits to the brine baths at Droitwich, and they intended indulging in a walk to Sutton Park on Wednesday, but the inclement weather upset the latter idea.

## The Central League.

OLDHAM RES. WIN A POINT AT VILLA PARK. Aston Villa Res. 2, Oldham Athletic Res. 2.

There was some keen and interesting football at Villa Park in the Central League game between the reserve teams of the Villa and Oldham Athletic. The visitors were aggressive at the start, but the Villa scored first through Cox. After some interesting exchanges Price had to leave the field, temporarily put out of action, and during his absence Basindale, the Oldham inside left, scored twice. The Villa did most of the pressing afterwards, but could not get through a stubborn defence. In the second half, following upon a good centre by Price, Taylor brought the scores level. Teams:—

ASTON VILLA RESERVES.—Manning, goal; Jones and Blackburn (E.), backs; Corbett, Ball, and Turner, half-backs; Price, Cox, Waton, Taylor, and Stott, forwards.

OLDHAM A. RESERVES.—Matthews, goal; Bradbury and Charlton, backs; Broadbent

W. F.), Carrick, and Braidwood, half-backs; Foweather, Wilkinson, Butler, Basindale, and Howard, forwards.

Referee: Mr. W. F. Henshall, Crewe.

## A "Shock" at Everton.

VILLA BEATEN AFTER LEADING TWO GOALS. Everton 3, Aston Villa 2.

Not often have we seen such a "quick change" as was witnessed at Goodison Park on Saturday, when Everton—after being led by 2 goals to 0—scored three goals in five minutes, and eventually won by the odd goal in five. In the first half there was little to choose between the sides in a fine, fast game. The Villa were sounder in defence, and a mistake by Salt led to Kirton scoring the only goal of the half after 20 minutes' play. Their bad defence let in the Villa for Kirton to score the second goal three minutes after the change of end. It looked as though Everton were going to suffer another defeat, but they played up in magnificent spirit, and after Jackson had made many fine saves Irvine scored from a corner after 17 minutes. Three minutes later he scored again during a terrific struggle in the goal mouth, in which the players appeared to use their hands. Two minutes later Irvine scored a third goal, thus completing the hat trick in five minutes. Later Walker hit the Everton crossbar, but the Villa could not get on level terms. It was Everton's first win at home over the Villa for 13 years. The Villa had the better defence until Everton started scoring, but Jackson all through kept a fine goal, and it was due to his work that the score against the Villa was not heavier. It was the Villa's thousandth League match, and a memorable one. Teams:—

EVERTON.—Salt, goal; Downs and Livingstone, backs; Peacock, Fleetwood, and Hart, half-backs; Chedgzoy, Fazackerley, Irvine, Crossley, and Harrison, forwards.

ASTON VILLA.—Jackson, goal; Smart and Weston, backs; Moss, Barson, and Blackburn (G.), half-backs; York, Kirton, Stephenson, Walker, and Dorrell, forwards.

Referee: Mr. A. F. Kirby, Preston.

The return League match with Everton (postponed from to-day, Saturday, January 28, in consequence of the English Cup tie with Luton Town) will be played at Villa Park on Wednesday, February 8. Kick-off at 3 p.m.



### Men of the Moment.

TO-DAY, SATURDAY, JANUARY 28TH, 1922.  
THE ENGLISH CUP.—COMPETITION PROPER.  
SECOND ROUND.

THE ties and officials in the second round of the F.A. Cup competition, to be played this afternoon, on the ground of the first-named club in each case, are as follows:—

**Aston Villa v. Luton Town.**

Referee: J. T. Howcroft (Bolton).  
Linesmen: D. R. Proctor (Sheffield) and A. Weston (Shrewsbury).

**Liverpool v. West Bromwich Albion.**

Referee: C. Austin (Kidderminster).  
Linesmen: H. Hartley (Bradford) and H. Brownlow (Notts).

**Bradford City v. Notts County.**

Referee: W. S. Brearley (Accrington).  
Linesmen: J. Weeting (Blackburn) and G. S. Jolly (Sheffield).

**Northampton Town v. Stoke.**

Referee: A. Scholey (Sheffield).  
Linesmen: R. O. Evans (Coventry) and T. A. Wragg (Notts).

**Leicester City v. Fulham.**

Referee: T. Tomlinson (Sheffield).

Linesmen: W. Read (Lincoln) and Corporal Hardwick (Worcester).

**Brighton and Hove Albion v. Huddersfield.**

Referee: R. R. Crump (Surrey).  
Linesmen: J. E. C. Stroud (Surrey) and C. W. Cox (Hastings).

**Southend United v. Swansea Town.**

Referee: J. E. Head (West Bromwich).  
Linesmen: R. J. Bond (Surrey) and H. G. Tyler (London).

**Swindon Town v. Blackburn Rovers.**

Referee: J. G. Hickling (Nottingham).  
Linesmen: A. McDonald (Trowbridge) and R. Pook (Portsmouth).

**Preston North End v. Newcastle United.**

Referee: J. G. A. Sharpe (Lichfield).  
Linesmen: H. W. Ledger (Leeds) and E. Farrer (Leeds).

**Bradford v. Arsenal.**

Referee: H. Rylance (Earlstown).  
Linesmen: T. Hogg (Stockport) and F. Slater (Blackburn).

**Nottingham Forest v. Hull City.**

Referee: J. Cahill (Liverpool).  
Linesmen: H. V. Stott (Tamworth) and J. V. Vass (Luton).

**Crystal Palace v. Millwall.**

Referee: I. Baker (Crewe).  
Linesmen: D. R. Gordon (Royal Navy) and G. H. Cottrell (Lewes).

**Tottenham Hotspur v. Watford.**

Referee: G. H. Moody (Bilston).  
Linesmen: M. Pearson (Norfolk) and C. A. Newman (Reading).

**Barnsley v. Oldham Athletic.**

Referee: J. H. Linthwaite (Leicester).  
Linesmen: J. A. Steele (Gainsborough) and A. E. Fogg (Bolton).

**Bolton Wanderers v. Manchester City.**

Referee: A. Shutt (Burnley).  
Linesmen: J. E. Telford (Preston) and A. Makin (St. Helens).

**Southampton v. Cardiff City.**

Referee: J. E. Head (London).  
Linesmen: A. Goddard (London) and L. J. Duncan (Hampshire).

#### THE LEAGUE—FIRST DIVISION.

Manchester U. v. Sunderland.....T. G. Bryan  
Chelsea v. Everton.....

#### SECOND DIVISION.

W'hampton W. v. Wednesday...H. W. Andrews  
West Ham U. v. Leeds U.....G. M. Pardoe  
Coventry City v. Blackpool.....J. Stewart



# SATURDAY, FEBRUARY 4, DAY CORRIDOR EXPRESS EXCURSION — TO — LONDON

(PADDINGTON STATION).

FROM	AT	Return Fares. Third Class.	FROM	AT	Return Fares. Third Class.
	a.m.	s. d.		a.m.	s. d.
Wolverhampton (L.L.) ...	7 30	18 0	Bordesley ...	8 14	16 0
Bilston G.W. ...	7 35	17 9	Small Heath ...	8 18	16 0
Wednesbury ...	7 40	17 3	Tyseley ...	7A53	16 0
West Bromwich ...	7 50	17 0	Acocks Green ...	7A50	16 0
Handsworth ...	7 55	16 6	Warwick ...	8 40	13 3
Hockley ...	8 0	16 3	Leamington Spa ...	8 50	12 9
Birmingham (S.H.) ...	8 10	16 3	Banbury ...	9 20	10 0

A—Join Excursion at Small Heath.

RETURN from London (Paddington) to all Stations at 12.10 night.

SALOON PARTIES may be booked for this Excursion or for the Cup Final. Applications to be made at above Stations, or to Mr. S. F. Johnson, G.W.R. Divisional Superintendent's Office, Colmore Row, Birmingham. 'Phone—Central 5681.

# ENGLISH CUP FINAL, At STAMFORD BRIDGE, LONDON. SATURDAY, APRIL 29th.

Arrange a party and book your Saloon by G.W.R. for Final.  
EXPRESS EXCURSIONS from Birmingham District.

APPLY AS ABOVE.

Paddington Station, January, 1922.

FELIX J. C. POLE, General Manager.

## Tobaccos, Cigars, and Cigarettes.

WHOLESALE.  
EVERY BRAND IN DEMAND STOCKED.

SPECIALITY:

### "PALS" CIGARETTES,

Packets of 10 for 4d.

Singleton & Cole, Ltd.

11/16, Cannon St., Birmingham.

Telephone: Central 1144.



# CUP FINAL, 1922.

## COOK'S COMBINED ARRANGEMENTS FOR PARTIES.

SPECIMEN INCLUSIVE OFFER FOR A PARTY OF 20 TO 24 OR MULTIPLIES THEREOF.

BY MOTOR CHAR-A BANC.

# 15/3

MOTOR CHAR-A-BANC or PAIR HORSE BRAKE from Arrival Station in London for Morning Sight-seeing, Drive to Places of Interest, Hot Dinner, Drive to STAMFORD BRIDGE GROUND, and back to Restaurant for Meat Tea.

SERVICES OF A CONDUCTOR.

BY PAIR-HORSE BRAKE.

# 13/9

*N.B.—Variations of the above will be quoted for on application. Hotel or Boarding House accommodation arranged if desired. Theatre seats booked.*

APPLICATION FOR

# SALOONS

(Minimum of 15 for small and 25 for large)

SHOULD BE MADE AT ONCE TO—

# Thos. COOK & SON

STEPHENSON PLACE and **BIRMINGHAM.**  
52/54, CORPORATION ST.,

Also 22, LICHFIELD ST., WOLVERHAMPTON.

## THEATRE ROYAL.

Evenings at 6.40. Matinees: Mondays, Wednesdays, Thursdays, and Saturdays, at 2.  
THE 1921 ROYAL PANTOMIME,  
"THE QUEEN OF HEARTS."  
Devised and Written by PHILIP RODWAY.  
G. S. MELVIN  
CHRISTINE ROY BILLIE BROWNE  
THE DAINTY DANES NINA LYN  
EDDIE GARR  
MIDLE. LISTAKOVA SYDNEY RUSSELL ENID MARSHALL  
BROS. GRIFFITHS  
THE TILLER TROUPE OF DANCERS  
AND  
HARRY WELDON.  
Box Plans Now Open. Tel.—435 Midland.

## SCORING BOARD—SATURDAY, JAN. 28, 1922.

Arrangements have been made for showing the results of the most important matches played to-day. The Scoring Board is planned thus:—

**A B C D E F G H J K L N P S**

The first name opposite the letters represents the home team. M signifies matches abandoned. Key for to-day's matches as follows:—

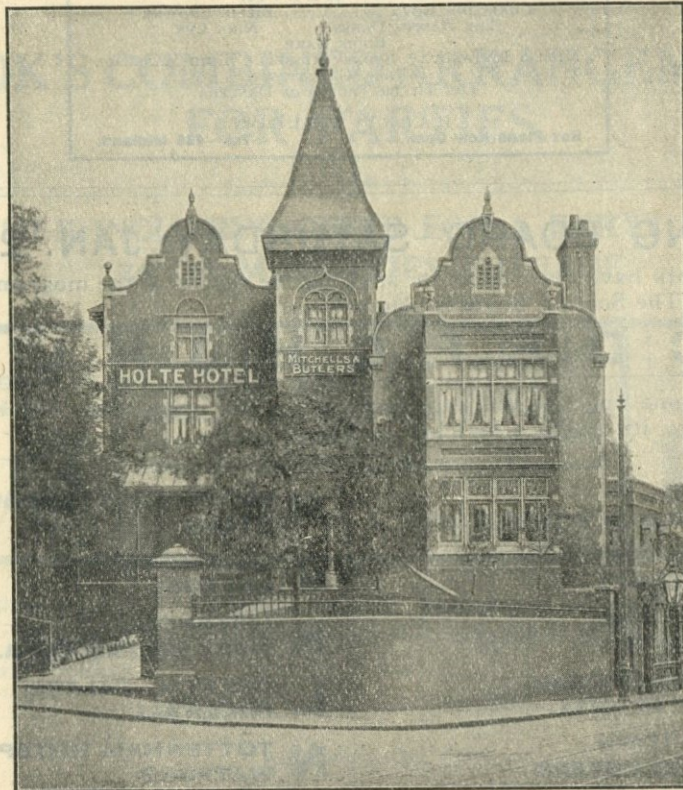
	Half-time.	Final.		Half-time.	Final.
<b>A</b> BRIGHTON HUDDERSFIELD TOWN			<b>H</b> NORTHAMPTON TOWN STOKE		
<b>B</b> BRADFORD CITY NOTTS COUNTY			<b>J</b> BRADFORD ARSENAL		
<b>C</b> SOUTHAMPTON CARDIFF CITY			<b>K</b> LIVERPOOL WEST BROMWICH A.		
<b>D</b> BOLTON WANDERERS MANCHESTER CITY			<b>L</b> CRYSTAL PALACE MILLWALL		
<b>E</b> SWINDON TOWN BLACKBURN ROVERS			<b>N</b> TOTTENHAM HOTSPUR WATFORD		
<b>F</b> BARNSELY OLDHAM ATHLETIC			<b>P</b> LEICESTER CITY FULHAM		
<b>G</b> PRESTON NORTH END NEWCASTLE UNITED			<b>S</b> NOTTS FOREST HULL CITY		

## Prince of Wales Theatre

Monday next, January 30th, for Six Nights at 7.  
MATINEES, THURSDAY AND SATURDAY, AT 2.  
PERSONAL VISIT OF  
**PERCY HUTCHINSON**  
And West End Company, in  
"IN NELSON'S DAYS,"  
Prior to London Production.  
Box Plans now open. Tel.—684 Central.



# Holte Hotel and Aston Lower Grounds



## LUNCHEONS, DINNERS, AND TEAS.

Large and Small Parties Catered for.

### ORDINARY EACH DAY.

Billiard, Concert, Smoking Club, and Coffee Rooms.

First-class Bowling Greens.

**MITCHELLS & BUTLERS ALES & STOUT**  
**WINES & SPIRITS.**

Telephone: East 86.

The Picture House that is Different

# Futurist

"The Picture House that is different."

**John Bright Street, Birmingham.**

Monday, January 30th (Daily from 1 p.m. to 10.30 p.m.)—  
 "The Lamp in the Desert" (Ethel M. Dell) - All Star Cast  
 "Homer Comes Home" - featuring Charles Ray

TEAMS FOR TO-DAY'S MATCH—SATURDAY, JAN. 28th, 1922.

## THE ENGLISH CUP.

Competition Proper—Second Round.

# LUTON TOWN v. ASTON VILLA

Kick-off at 3 p.m.

### LUTON TOWN.

Right.					Left.
		BAILEY (1)			
	LENNON (2)		TIRRELL (3)		
	FOSTER (4)		WALKER (5)		ROE (6)
	BASSETT (7)	HIGGINBOTHAM (8)	SIMMS (9)	BUTCHER (10)	HOAR (11)
	DORRELL (12)	WALKER (13)	DICKSON (14)	KIRTON (15)	YORK (16)
		BLACKBURN (G.) (17)	BALL (18)		MOSS (19)
		WESTON (20)		SMART (21)	
			JACKSON (22)		
Left.					Right.

REFEREE: MR. J. T. HOWCROFT (Bolton).

LINESMEN: MESSRS. D. R. PROCTOR (Sheffield), and A. WESTON (Shrewsbury).

### ASTON VILLA.

In the event of any alteration in the above teams, a board giving particulars will be sent round the ground.

# Scala

"The home of good pictures and music."

**Smallbrook Street, Birmingham.**

Monday, January 30th (Daily from 1 p.m. to 10.30 p.m.)—  
 "Squibs" - featuring Betty Balfour  
 "Duds" (Monday, etc.) - A Goldwyn production  
 "The Cruise of the Make-Believes" (Thursday, etc.)  
 starring Lila Lee



### To-day's Visitors.

#### THE VILLA'S CUP-TIE OPPONENTS.

##### LUTON TOWN F.C.

THE Luton Town Football Club has been in existence for nearly forty years, and emerged under its present title through the amalgamation of the Luton Wanderers and the Luton Excelsior. At first, like most others, it was an amateur organisation. We have seen it stated that Woolwich Arsenal (now the Arsenal) claim to be the pioneers of professionalism in the South, they "taking the plunge" in September, 1891, when the club turned entirely professional. Luton Town, however, claim the

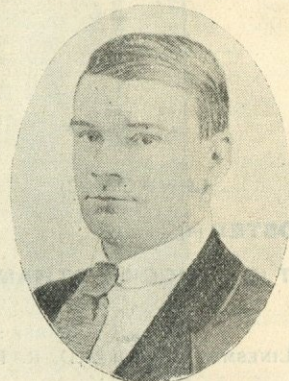


A. TIRRELL (Captain, Left Back).

"distinction," and if we may rely upon a very complete and official history of Association football, there seems to be some justification for their claim, for therein it is recorded that "in 1890-91 Luton Town adopted professionalism in the most modest way possible, all the players being on a limit wage of half-a-crown a week." Sounds like a fairy tale in these days of highly-paid professionals, does it not? However that may be, ambition led to the engagement of a fully-paid professional—Galbraith, the old centre forward and Irish International, having that unique honour. As time went on, so the number of professionals increased, and the strength of the Luton team also.

The first seasons of the Southern League resolved themselves practically into duels between Luton and Millwall, for at that time

the other clubs were not up to the standard of the Straw-plaiters and Dockers. As a matter of fact, Luton retired from the Southern League at the end of the season 1896-97, and joined the Second Division of the Football League, so as to enable them to meet better-class opponents and improve the standard of their own football. So strong were the team at that time that many of their admirers were of opinion that Luton ought to have won their way into the First League. And the names of the early pioneers—such men as Williams, McCartney, McEwen, Davis, Stewart, Docherty, Gallacher, Coupar, Galbraith, McInnes, Donaldson, and Elkins—will always remain dear to the Luton crowd. But the cost of transfers and long railway journeys in the Second League played havoc with the finances of the



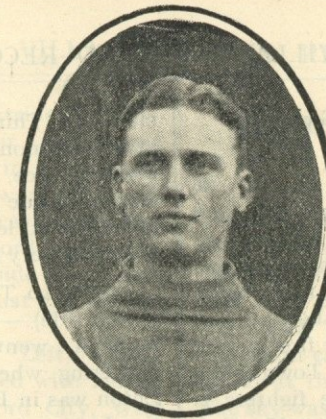
J. R. WALKER (Centre Half-Back).

club, and in 1900 they returned to the Southern League, where they have remained, the other Southern clubs in the meantime having improved out of all knowledge. If Luton Town have never had the distinction of winning Championship honours in the Southern League, they have more than once proved themselves gallant Cup fighters and a team to be respected when it comes to a question of the "knock-out."

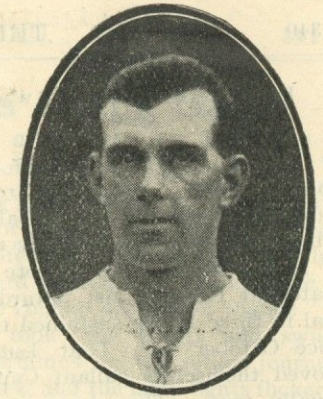
A week ago they were on the top of the Third Division (Southern) League table, but on Saturday—like the Villa themselves—they "came unstuck," and for the time being at any rate they occupy second place to Southampton, a point in arrear. Their record is a very fine one and stamps them as a side not to be lightly regarded. Here are their performances in the League this season:—



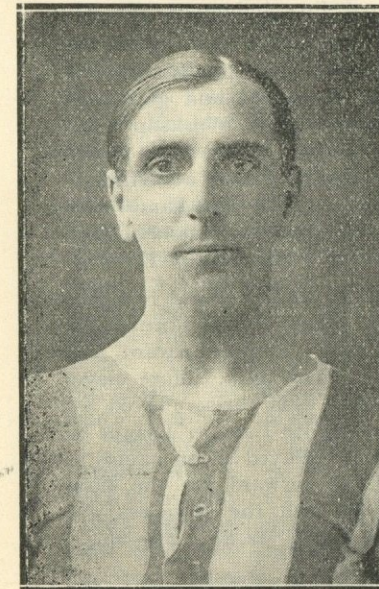
G. LENNON (Right Back).



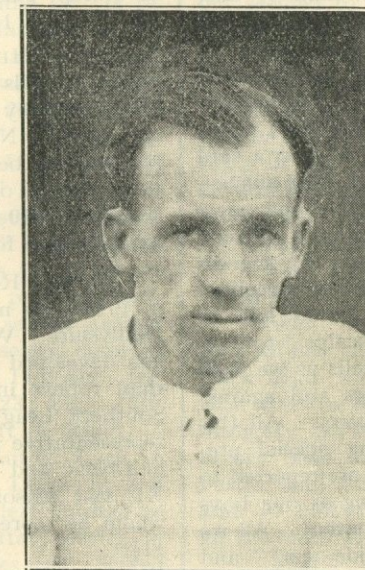
H. BAILEY (Goalkeeper).



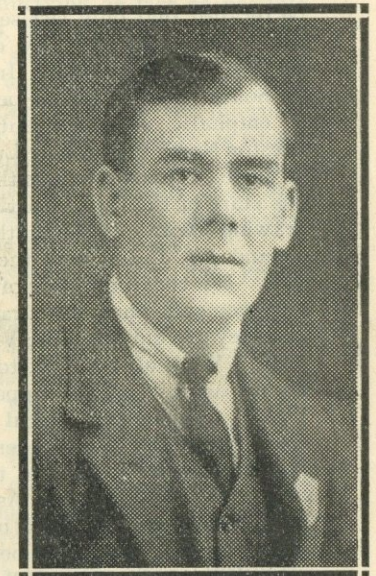
A. ROE (Left Half-Back).



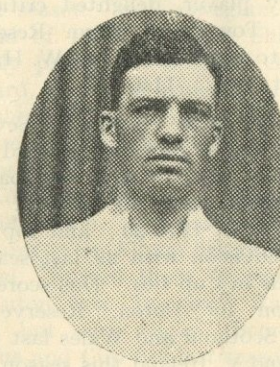
E. J. BASSETT (Outside Right).



E. SIMMS (Centre Forward)



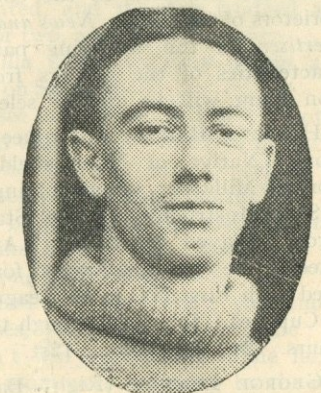
J. H. FOSTER (Right Half-Back).



H. HIGGINBOTHAM (Inside Right).



G. BUTCHER (Inside Left).



S. HOAR (Outside Left).



## HOME GAMES.

## AWAY GAMES.

P.	Goals				Pts.
	W.	D.	L.	F. A.	
25	11	1	0	31	2

Their "home" record is remarkable, and shows they have only lost 2 goals in 13 matches. What a tribute to the solidness of their defence! It is worthy of special note that in being beaten at Reading last Saturday by the odd goal in three Luton sustained their first defeat since October 15. That Luton Town have proved themselves gallant Cup tie fighters is equally true. They have won notable Cup ties on the Brighton, Coventry, Rotherham, and South Shields enclosures, and it may be recalled that only last season they surprised the Birmingham F.C. by defeating them 2-1 on the Luton Ground. In the second round at South Shields, Luton beat the Northerners in emphatic style 4-0, but in the third round Preston North End won at Luton 3-2 after a hard struggle. This season also they made an auspicious start in the Cup. In the first round, after drawing with Portsmouth on the latter's ground 1-1, Luton won the replay by 2 goals to 1. It is the recollection of these very excellent achievements that encourages Luton folk to say they are out for "the Villa scalps" to-day. Well! We shall see. History tells us we shall be up against gallant opponents and against highly trained and skilful players. All this week they have been undergoing special preparation at Droitwich, and they are reported to be as "fit as fiddles." As long as our boys play their game we shall be content. All we would say is "May the best side win!" and may that side be Aston Villa.

## THE LUTON PLAYERS.

We are indebted to the courtesy of the proprietors of the *Luton News and Bedfordshire Advertiser* for the following particulars and characteristics of the players from whom the Luton team will be finally selected.

**HARRY BAILEY** (Goalkeeper).—Second season. Native of Macclesfield. Came to Luton via Millwall; before joining the "Lions" was Sergt.-Instructor of Gym. Staff, Grenadier Guards. Played for Army F.A. team. Recruited as reserve goalkeeper for Luton, but played with First XI. in 38 League games and four Cup ties. Is young enough to win highest honours. 24; 5ft. 10in.; 12st.

**GEORGE LENNON** (Right Back).—Second season. Native of Kilwinning, Ayr. First big

club was Third Lanark, but came to Luton after five months with St. Mirren. Only once lost his place, and that through injury. Very fast, with fine powers of recovery, dour tackler, and splendid length kick. Steady as a Scottish elder and very popular. Is 26; 5ft. 8in.; 12st.

**ALFRED TIRRELL** (Left Back, and Captain of the side).—Second season. Native of Desborough, went to West Ham United from Kettering when in teens. First match with Luton was in Reserves, then played 37 consecutive League and Cup games with First XI. until collar-bone was broken. Was elected captain. Is sturdy player of fine judgment. Is 27; 5ft. 11½ins.; 13st.

**JOHN HENRY FOSTER** (Half-back).—A recruit. Hails from Barnsley, and graduated with Barnsley Reserves and Worksop; left coal mine for Notts County, for whom he played five seasons before joining Luton at Whitsuntide. Played in 32 First Division games with Notts in 1919-20. Is vigorous exponent, and has physique for it; 27; 5ft. 11in.; 12½st.

**ARTHUR ROE** (Half-back).—Came to Luton in 1914 from native place—South Normanton, Derbyshire. Was then a centre forward, but has developed into utility man. More clever than robust in style. Has thrice played for Southern League or South-Eastern League in representative games. Played seven games as half-back and four as forward for the First XI. last season; 39 with the Reserves, for whom he scored 14 goals. Is 25; 5ft. 9ins.; 11½st.

**JAS. R. WALKER** (Half-back).—A recruit secured after trial at end of last season. Native of Port Glasgow, played with juniors of that place and Kilborchan Athletic; captained latter. A brainy player, delighted critics in his games with Town and Town Reserves. Preferred Luton to Kilmarnock and W. Hartlepool. Is 25; 5ft. 8ins.; 11st.

**ERNEST SIMMS** (Centre Forward).—Seventh season. Born at South Shields. Record goal scorer in first-class football with 40 goals in London Combination games in 1916-17. Top goal scorer with 12 in 1919-20; and top goal scorer in Third Division with 29 last season; also scored 5 goals in Cup ties. Has scored 15 goals this season for Luton. Reserve for England against Scotland and Wales last year. Played for England v. Ireland this season. Is 28; 5ft. 9ins.; 11½st.

## Echoes of the Game.

## MORE CUP TIE TALK.

JIM was walking briskly along the road in order to get warm, for there was a bitter east wind blowing, and the roads were frozen in ridges that were as hard as iron. In the distance he could hear "the ringing grooves of change" as the tram-cars took the points and swung round at the terminus for the return journey. The sky was black, and the lamp-lights flickered and wavered as the strong wind whistled across the country side, and the few folks who were out seemed to be hurrying as fast as possible to their inglenooks, the glow of many being discernible in the suburban district through which our traveller was wending his way. Jim had called for his elderly comrade, was informed that he had gone for a walk, and knowing something of the old fellow's habits, took a route he was fond of, and came suddenly upon him in the semi-darkness between the lamp-posts. He linked his arm in Bill's, and said:

"Out for a constitutional, my young friend?"

"Well," said Bill, "I've been in a stuffy shop all day, and it has developed into rather a thick head, so I thought I'd have a walk in this wind to blow the cobwebs away. A bit draughty, isn't it?" he added, as a swirling breeze blew them both sideways; "but it's better than sitting over the fire all the while, and it makes you appreciate the comfort all the more when you get back to it."

"That's what struck me," answered Jim, as the two went gaily along together, "and I'm glad I came out, for it's fine when once you've got warm."

Bill assented, and the pair trudged along for a minute or two, and then Jim said:

"The Villa seem to have made a bit of a mess of it on Saturday."

"Don't see it," growled Bill. "Lots of folks have said that to me; but I've talked to a good judge who saw the match, and he tells me that Everton won on their merits."

"But to be two goals up, and then to be beaten isn't like Aston Villa. Must have been something wrong with the defence."

Bill laughed. "Don't waste your time on making excuses, Jim; it's a stale game; and the Villa can't win every time. The fact is, you and a lot more were led away by the newspaper prophets, who with one accord tipped the

**EDWARD JOHN BASSETT** (Outside Right).—A recruit from Watford. An experienced player, his early rise was rapid, in four seasons making steps of Metrogas, Newark, Millwall, Notts County. Then to the war, and when demobilised transferred to Watford. The general dispersal of the Watford side found him anxious to come to Luton. Is fast and tricky; 28 years; 5ft. 7ins.; 10½st.

**LOUIS BOOKMAN** (Outside Left).—Third season. Native of Dublin, played with Dublin Adelaide, Belfast Celtic, Bradford City, West Bromwich Albion, before coming to Luton. Member of Irish International Championship team in 1913, when he was only 19. Is remarkably fast and tricky. Has played for Ireland at cricket. Always a gentleman. Played for Ireland on left wing with Mathieson against England this season. Is 27; 5ft. 6½ins.; 10½st.

**ALLAN MATHIESON** (Inside Left).—Second season. Belfast born, came to Luton after doing seven years with an Ulster Regiment. Had played in Glentoran's Irish Cup winning team. A born dribbler, he has few superiors in ball manipulation, and is a powerful shot. Gained International cap last season against Wales. A little misfortune last season enforced two months' holiday, but scored 11 goals. Ireland v. England this season. Is 23; 6ft.; 13st.

**SIDNEY HOAR** (Outside Left or Right).—Seventh season. Arrived at Luton Town in 1913-14 by way of Toddington, Leagrave, and Luton Clarence, as an outside left, crossed to right wing two seasons ago after service in the Army. Speedy, tricky, centres well. Scored six goals last season. Played for F.A. team against Army XI. this season. Is 26; 5ft. 8ins.; 10½st.

**HARRY HIGGINBOTHAM** (Inside Forward).—Third season. A Glaswegian, came to Luton at end of 1920 via South Shields. Had previously played for Scottish clubs. A fearless forward, clever in passing, dribbles well, and can shoot when he likes. Scored six goals in League and Cup ties last season. Is 5ft. 11in.; weighs 12½st.

**GEORGE BUTCHER** (Inside Forward).—Second season. A Londoner born, but learned the game at St. Albans before joining West Ham United. Stayed there 10 seasons, transferred to Luton last January. Rather small and light, but very tricky. Scored six goals in League and Cup ties last season. Keeps fit by boxing. Is just over 30; 5ft. 6ins.; 10st.



Villa to win because Everton had rather a bad shaking up in the Cup ties, and have not done so well as they had hoped in the League; but you and they forget that what is called a surprise is possible at any time in any of the Leagues, since in the various divisions the teams are wonderfully level, and an eleven of the Everton stamp are likely to rise to the occasion when Aston Villa are in the field against them—for, if you notice, the majority of the Leaguers are in the habit of fighting their very hardest when up against the Villa—which is about the best compliment they can pay the Aston brigade. It was disappointing, of course, to see victory snatched from their grasp; but all the more honour to Everton that they should have been able to do so. Try and imagine what the state of affairs would have been had the sides been at Aston and the Villa had turned the tables as Everton did last Saturday, and give the Liverpool crowd the delirious joy which must have been theirs when what looked like certain defeat was turned into victory. Why, one can almost rejoice that the game should go as it did, especially as my friend tells me that taken on the whole, Everton was the best side on the run of the play—and this is not hard to believe when every report praises the Villa goalkeeper so highly. No, no, Jim; you mustn't squirm over that match, even though, in your opinion, the losers took it perhaps a little too easily when they were two in front. These little accidents do sometimes occur in football, you know; and though I admit that they do not often happen to the Villa, they are just as liable as other clubs, as they found out on Saturday. Put it down as one of the little disappointments that football flesh is

heir to, and think all the better of Everton for their stickability."

"Right you are," said Jim heartily; "and now what about the Cup ties on Saturday?"

"A remarkably fine set of games," answered Bill; "and as it would be a waste of time to attempt to give anything like a forecast, let us consider some of the nearer ones. The Albion have the stiffest task of the whole round, I take it, for Liverpool has proved itself a brilliant combination all the season; but the good old Throstles have a very happy knack—at least, they had—of playing uncommonly well in Cup ties, and I should not be surprised if they return to their former habits. If they play as well against Liverpool as they did against Tottenham, I don't think the Liverpoolians will stop them, though it is quit; evident the latter have a remarkable defence. It would be a fine thing for the Albion if they could manage a draw there, for a Wednesday Cup tie at The Hawthorns between such two teams would mean a ruly great gate. I'd like to see that."

"So should I," echoed Jim; "and here's one who would be there to see the fun. The Villa are safe for the next round, I suppose, Bill?"

"Don't you be too cocksure about it, my son. Luton Town, so far as tip-top football is concerned, is what is called an unknown quantity, and that sort of team has sometimes a habit of making history, as you will remember if you carry your mind back for a few years."

"But you don't think," said Jim (and there was almost anxiety in his tones) "that Luton will win?"

"From a class point of view, no; but sometimes, you know, the inferior team catches its superior neighbour on one leg, so to speak; and a bit of luck and a first-class defence sometimes tell a tale that is hard for the feelings of the home followers. And, if you ask me, the Villa's experience in that regard has, on more than one occasion, been a bit painful. I don't say it will be on this occasion; but from what I have heard of the Luton team—indeed, their record lately proves it—it won't do to get playing any monkey-tricks with them; and if the Villa men were to ask my advice (which they won't), they'll keep pegging away until the whistle sounds for the last time, no matter how many goals they are in front. Don't forget that they have done well this season,

and didn't they knock Birmingham out of the Cup last year?"

Jim laughed. "They won't have the chance of doing that this season, anyhow. They tell me that the Luton lads are pretty confident about the result, and that they have even the ambition of taking the English Cup down amongst the straw-plaiters for exhibition."

"All honour to them," said Bill; "there's nothing like confidence in Cup ties, and they'll play all the better for it. If they could bustle the Villa off their game, they might have a little chance; but I should think the Astonians are a bit too old to be hustled or hustled, and if they play anything like so finely as they did here against Burnley—a match which I think did them more credit than any one they have played this season—well, Luton will have to try again next year. Still, one never knows; and in any case, we shall probably have a good game, for the general impression is that the visitors are a real set of triers, and are quite good enough to go all the way. There's sure to be a big gate if the weather is anything like; and next Monday, my lad, we shall see which team the Villa, if they survive, have to meet in the next round. By the way, I met a Welsh friend the other day, and he said that South Wales is going nap on Cardiff City for the Cup. They are, as you know, a much-improved team since the beginning of the season, and may be amongst the finishers. But here we are home again, Jim, so you'll come in and have a bit of supper."

There was a flicker of snow in the air, and the wind was still very keen as the lamp-light flashed across the falling flakes.

### Results at a Glance.

SATURDAY, JANUARY 21ST, 1922.

AMATEUR INTERNATIONAL.

Wales 0, England 7. (At Swansea.)

THE LEAGUE—FIRST DIVISION.

Arsenal 0, Burnley 0.....	25,000
Birmingham 0, Newcastle U. 4 .....	20,000
Blackburn R. 2, Sheffield U. 3.....	18,000
Bolton W. 0, Chelsea 2.....	20,000
Cardiff City 6, Bradford City 3.....	30,000
Everton 3, Aston Villa 2 .....	30,000
Huddersfield T. 0, Liverpool 1.....	10,000
Manchester C. 2, Middlesbrough 2 .....	25,000
Oldham Ath. 2, Preston N.E. 0 .....	11,000

Sunderland 2, Manchester U. 1 .....	10,000
W.B. Albion 3, Tottenham H. 0 .....	20,000

#### SECOND DIVISION.

Blackpool 2, Coventry City 1 .....	5,000
Bradford 5, Derby County 1.....	5,000
Clapton Orient 0, Leicester C. 0 .....	8,000
Crystal Palace 1, Bristol City 1 .....	7,000
Fulham 0, Barnsley 0 .....	12,000
Hull City 2, Port Vale 0 .....	6,000
Leeds U. 0, West Ham U. 0 .....	7,000
Notts County 2, South Shields 0 .....	9,000
Rotherham Co. 0, Notts Forest 1.....	18,000
Stoke 1, Bury 0 .....	12,000

#### THIRD DIVISION—SOUTHERN.

Brentford 3, Plymouth A. 1.....	8,000
Brighton and Hove 3, Portsmouth 0 ..	4,000
Bristol Rovers 3, Newport County 4 ..	8,000
Charlton Ath. 1, Swansea T. 0.....	8,000
Northampton T. 2, Exeter City 3.....	7,000
Norwich City 1, Swindon Town 2.....	3,000
Q.P. Rangers 1, Gillingham 0 .....	5,000
Reading 2, Luton Town 1.....	5,000
Southampton 4, Millwall 2 .....	4,000
Watford 4, Southend U. 1.....	4,000

The matches between Sheffield Wednesday and Wolverhampton Wanderers and Aberdare A. and Merthyr Town were postponed owing to the bad state of the grounds.

#### SCOTTISH LEAGUE.

Morton 2, Ayr United 1
Albion Rovers 1, Clyd. 1
Hearts 3, Third Lanark 1
St. Mirren 0, Falkirk 0
Raith Rovers 0, Hibernians 0
Kilmarnock 3, Clydebank 2
Queen's Park 0, Dundee 3
Celtic 2, Aberdeen 0
Hamilton A. 0, Rangers 0

#### CENTRAL LEAGUE.

Aston Villa 2, Oldham Athletic 2
Liverpool 2, West Bromwich Albion 3
Preston North End 1, Birmingham 1
Wolverhampton W. 4, Manchester City 2
Port Vale 2, Bolton Wanderers 2
Manchester U. 1, Stoke 0
Derby County 2, Huddersfield Town 3
Sheffield United 3, Leeds United 3
Bradford City 2, Blackburn Rovers 2
Bury 2, Blackpool 0

WEDNESDAY, JANUARY 5TH, 1922.

#### CENTRAL LEAGUE.

Everton 5, Burnley 2.
-----------------------



Remember  
this —  
'For Size and Tone,  
They Stand Alone.'

## SUNRIPE

The EXTRA SIZE  
Fine Golden Virginia  
**CIGARETTES**  
10 for 6<sup>d</sup>      20 for 1/-  
Also 50's



The Tables Up to Date.

THE LEAGUE—FIRST DIVISION.

	P	W	L	D	F	A	Pts
Liverpool	26	13	2	11	36	20	37
Burnley	25	15	7	3	48	30	33
Bolton Wan.	26	13	7	6	45	32	32
Aston Villa	26	14	10	2	53	37	30
Manchester City	25	12	8	5	43	40	29
Cardiff City	26	12	9	5	38	36	29
Tottenham H.	25	11	9	5	39	26	27
Huddersfield T.	26	11	10	5	33	26	27
Sunderland	25	12	10	3	43	37	27
Newcastle U.	25	10	8	7	32	28	27
Middlesbrough	25	9	7	9	41	40	27
Preston N.E.	25	10	10	5	32	41	25
Sheffield U.	26	9	11	6	42	36	24
West Brom. Albion	25	10	11	4	28	37	24
Everton	25	7	9	9	35	32	23
Oldham A.	25	8	10	7	23	32	23
Chelsea	26	7	11	8	19	32	22
Blackburn R.	27	6	12	9	35	40	21
Birmingham	25	9	13	3	30	38	21
The Arsenal	25	7	13	5	25	33	19
Bradford City	25	6	13	6	28	51	18
Manchester U.	26	4	15	7	26	50	15

SECOND DIVISION.

	P	W	L	D	F	A	Pts
Nottingham F.	25	14	4	7	29	18	35
Fulham	25	13	7	5	46	27	31
West Ham United	25	14	8	3	35	21	31
Hull City	25	14	8	3	34	22	31
Stoke	25	11	5	9	31	22	31
Notts County	25	11	6	8	35	25	30
Leicester City	25	9	5	11	21	16	29
Barnsley	25	12	8	5	33	31	29
Rotherham C.	25	10	9	6	21	26	26
Leeds United	25	9	9	7	25	26	25
Derby County	25	10	10	5	36	38	25
Wolverhampton W.	24	10	10	4	28	30	24
Bury	25	9	11	5	35	34	23
South Shields	24	8	9	7	22	22	23
The Wednesday	23	7	7	9	27	28	23
Crystal Palace	25	8	10	7	27	30	23
Clapton Orient	25	8	10	7	24	28	23
Bristol City	25	6	13	6	23	40	18
Bradford	24	6	13	5	28	37	17
Coventry City	23	6	13	4	25	30	16
Blackpool	25	6	16	3	20	38	15
Port Vale	24	5	15	4	28	44	14

THIRD DIVISION—SOUTHERN.

	P	W	L	D	F	A	Pts
Southampton	24	15	2	9	47	14	37
Luton Town	25	15	4	6	43	16	36
Plymouth A.	25	14	5	6	32	17	34
Portsmouth	24	10	4	10	40	26	30
Queen's Park R.	25	9	6	10	33	28	28
Brentford	24	9	6	0	28	22	27
Charlton A.	25	10	8	7	29	35	27
Aberdare	23	10	8	5	35	32	25
Swindon Town	24	9	8	7	37	34	25
Swansea Town	25	8	9	8	30	28	24
Merthyr Town	23	11	10	2	28	36	24
Brighton and H.A.	24	9	10	5	31	26	23
Millwall	26	6	9	11	20	24	23
Bristol R.	23	9	10	4	36	33	22
Newport County	25	7	10	8	33	37	22

Watford	24	5	7	12	27	28	22
Northampton	23	8	10	5	28	47	21
Reading	23	6	11	6	19	27	18
Exeter City	24	5	12	7	21	39	17
Southend U.	25	5	13	7	20	41	17
Norwich City	23	3	12	8	24	33	14
Gillingham	23	5	14	4	20	38	14

SCOTTISH LEAGUE.

	P	W	L	D	F	A	Pts
Celtic	28	17	2	9	57	16	43
Rangers	28	18	3	7	55	21	43
Partick Thistle	27	17	6	4	47	29	38
Raith Rovers	29	14	6	9	51	32	37
Dundee	29	13	8	8	39	25	34
Hibernians	29	12	7	10	37	30	34
Falkirk	29	11	7	11	37	28	33
St. Mirren	29	11	9	9	53	45	31
Ayr United	29	11	10	8	38	36	30
Motherwell	28	11	12	5	42	38	27
Aberdeen	29	11	13	5	40	37	27
Clyde	28	10	11	7	40	44	27
Albion Rovers	29	9	12	8	37	42	26
Hamilton A.	29	7	11	11	44	49	25
Third Lanark	28	8	11	9	40	47	25
Morton	29	10	14	5	37	46	25
Kilmarnock	29	9	13	7	41	60	25
Hearts	29	8	13	8	35	40	24
Airdrieonians	28	8	14	6	33	41	22
Dumbarton	27	6	14	7	32	54	19
Queen's P.R.	28	6	17	5	25	59	17
Clydebank	28	4	18	6	25	66	14

CENTRAL LEAGUE.

	P	W	L	D	F	A	Pts
Sheffield U.	28	15	6	7	50	26	37
Manchester City	26	13	8	5	45	27	31
Everton	24	11	4	9	52	37	31
Manchester U.	26	10	6	10	43	39	30
Birmingham	27	13	10	4	54	54	30
Wolverhampton W.	26	12	9	5	42	35	29
Preston N.E.	27	12	10	5	45	39	29
Blackburn Rovers	27	12	10	5	46	49	29
Bury	26	11	9	6	42	34	28
Burnley	25	13	10	2	50	56	28
Stoke	26	10	10	6	42	36	26
Leeds United	24	9	7	8	36	38	26
Huddersfield T.	27	11	12	4	32	33	26
West Brom. A.	26	10	11	5	34	32	25
Bolton Wan.	24	9	9	6	39	37	24
Aston Villa	26	10	12	4	35	39	24
Blackpool	25	8	9	8	23	29	24
Port Vale	25	8	11	6	29	42	22
Bradford City	24	7	11	7	29	32	21
Liverpool	24	8	21	4	39	37	20
Oldham A.	25	4	16	5	24	58	13
Derby County	25	4	18	3	25	56	11

Frank Barson.

THE public will no doubt be surprised that Frank Barson is not playing in to-day's Villa team in the English Cup tie against Luton Town, and we think it due to our supporters to say Barson has been suspended for misconduct.

# THE MIDLAND "RED" MOTOR SERVICES



**SPECIAL Saloon Buses for Private Parties at any time at considerably reduced rates.**

'Buses are running at frequent intervals every day

From **THE BULL RING** for

Alcester  
Alvechurch  
Astwood Bank  
Bearley  
Bidford  
Bromsgrove  
Broadway  
Banbury  
Oleeve Prior  
Oolwyn Bay  
Coventry  
Droitwich  
Earlswood

Evesham  
Feckenham  
Henley-in-Arden  
Hockley Heath  
Hagley  
Kenilworth  
Knowle  
Leamington  
Llandudno  
Malvern  
Pershore  
Redditch

Rhyl  
Rubery  
Rugby  
Shipston-on-Stour  
Southam  
Stonebridge  
Stratford  
Studley  
Upton  
Warwick  
Worcester  
Wootton Waven

From **NEW STREET** for

Brierley Hill  
Belbroughton  
Bewdley  
Blackheath  
Dudley  
Hagley

Halesowen  
Himley  
Kidderminster  
Kingswinford  
Kinver  
Oldbury

Old Hill  
Quinton  
Stourbridge  
Walsall  
Wolverhampton

From **THE OLD SQUARE** for

Ashby-de-la-Zouch  
Bassett's Pole  
Burton-on-Trent  
Coleshill  
Hopwas

Leicester  
Lichfield  
Mere Green  
Nuneaton  
Shenstone

Stafford  
Streetley  
Sutton  
Tamworth  
Walmley

Connections can be made to all important Towns and Villages in the Midlands.

Write for Winter Time Table

Price 3d.

**SEND YOUR PARCELS BY THE MIDLAND "RED" COMMERCIAL MOTOR SERVICES.**

Frequent Deliveries to all parts.

Agents all over the Midlands.

Chief Offices:

**BEARWOOD, BIRMINGHAM.**

Telephone — 2577 Midland.

Booking Office:

**BULL RING.**

Telephone — 386 Central.

O. C. POWER, TRAFFIC MANAGER.



# ATKINSONS

## ASTON ALES



### ON DRAUGHT AT

Beehive and Sample Bar,  
Bull St.

Dr. Johnson's Passage.

DENNIS HODGETTS  
(Aston Villa and English International).

The Board, Bull Ring.

The Sydenham, Pershore Street.

The Windsor, Cannon Street.

Phoenix Hotel, Park Street.

St. James' Restaurant, New St.

The Scotch House, Bull Street.

The Holborn, High Street.

The Crown, Edgbaston Street.

The Market Hotel, Dudley St.

The Big Bull's Head, Digbeth.

Lord Rodney, Hurst Street.