

Price One Penny.]

Saturday, April 15th, 1922.

[Price One Penny.

NEW HUDSON BICYCLES

FOR

15/-

Our generous deferred payment system was a boon to many cyclists, but with the coming of the Great War, like many other things, it had to be temporarily suspended. Now we have re-established this system again.

Our integrity in business is so well known that the confidence which **MUST** exist between buyer and seller under this system is quickly established by us. We may add that we transact all our business dealings direct, employing no third party, and there is no waiting. On the first deposit you immediately have your bicycle. Secure the famous New Hudson Bicycles on our generous easy payment terms **NOW**. Our lowest terms are:

15/- Deposit & 3/- Weekly Payment

BEDS & HERTS
PICTORIAL
AND
TUESDAY TELEGRAPH

Will be published as usual on Tuesday next. 8 pages. 4 p.m. One penny.

ALL WEEK-END EVENTS IN PICTURES.

NOTHING SO GOOD AT THE PRICE!

**J. W. GREEN'S
NOTED LUTONIAN ALE**

In CRATES of 4 Quarts.

5/- per CRATE. - 1/3 per QUART.

NOTED LUTONIAN STOUT

In CRATES of 4 Quarts.

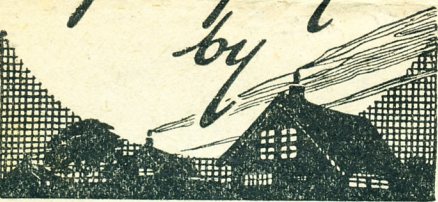
5/8 per CRATE. - 1/5 per QUART.

OBTAINABLE FROM ALL TENANTS & AGENTS,

Latest
in
SHIRTS

5/11 to 8/11

Rest assured
your
COAL
will be delivered promptly by



The PREMIER Coal Merchants

BRENTNALL & CLELAND

7, 8, 9, Hitchin Rd., Luton

Phone 617.

Luton Town F.C. 1st XI Fixtures.

1921.	Opponents.	Ground.	F. A.
Aug. 27	Norwich City (0-3)	A	1 0
.. 29	Southampton (1-1)	H	0 0
Sept. 3	Norwich City (4-0)	H	2 1
.. 5	Southampton (1-1)	A	1 2
.. 10	Newport County (2-2)	H	4 0
.. 14	Exeter City (3-0)	H	4 0
.. 17	Newport County (0-2)	A	2 2
.. 24	Plymouth A. (1-1)	H	1 0
Oct. 1	Plymouth A. (0-1)	A	0 2
.. 8	Merthyr Town (1-0)	H	3 0
.. 15	Merthyr Town (1-4)	A	0 2
.. 22	Portsmouth (2-2)	H	1 0
.. 29	Portsmouth (0-3)	A	1 1
Nov. 5	Southend U. (4-0)	H	3 0
.. 12	Southend U. (1-1)	A	1 0
.. 19	Swansea Town (3-0)	H	3 0
.. 26	Swansea Town (1-1)	A	1 1
Dec. 3	Brighton (F)	A	1 1
.. 10	Exeter City (0-1)	A	1 0
.. 17	Millwall (0-0)	H	1 0
.. 24	Millwall (0-0)	A	1 1
.. 26	Swindon (1-9)	A	1 1
.. 27	Swindon (2-0)	H	2 1
Dec. 31	Gillingham (6-0)	H	7 0
Jan 7	F.A. Cup—Portsmouth A.	A	1 1
.. 11	F.A. Cup—(Replay)	H	2 1
.. 14	Gillingham (0-0)	A	1 0
.. 21	Reading (1-0)	A	1 2
.. 28	F.A. Cup—Aston Villa	A	0 1
Feb. 4	Bristol Rovers (0-5)	A	0 2
.. 11	Bristol Rovers (0-1)	H	1 2
.. 18	Brentford (0-1)	A	2 0
.. 25	Brentford (2-0)	H	3 0
Mar. 6	Reading (6-0)	H	0 1
.. 11	Aberdare	H	1 2
.. 18	Brighton & H. (1-1)	A	1 1
.. 25	Brighton & H. (3-2)	H	2 0
Apr. 1	Watford (1-0)	H	1 1
.. 8	Watford (0-1)	A	1 4
.. 14	Q.P. Rangers (1-4)	A	0 1
.. 15	Charlton Athletic	H	
.. 17	Q.P. Rangers (2-1)	H	
.. 22	Charlton Athletic	A	
.. 29	Northampton (0-1)	A	
May 1	Aberdare	A	
.. 6	Northampton (3-1)	H	

*New Clubs.

LUTON

RIGHT	LEFT
1 Bail	14 Thomp
2 Lennon	18 Whal
4 Molyneux	20 Goodm
7 Hoar	22 Barr
8 Reid	
12 Wilson	
13 Steele	
17 Dudley	

CHARLTON

Referee: Mr. E. TOLFEE, Southampton

Luton Aluminium

SOUTH ROAD

Aluminium Casting

We give only one kind of Service—**THE BEST.**
We study the interests of our Customers by offering—**EFFICIENCY with ECONOMY.**
We take a pride in living up to this standard, and our vehicles are always **RELIABLE.**
We have nothing which can in any way be regarded as second rate.
We shall be pleased to demonstrate the truth of the foregoing.

For **CHARS-A-BANC, LORRIES or HIRE CARS,**

Write, Call or 'Phone

R. N. R. MASON,
34, Manchester Street, — LUTON.

TELEPHONE 1016 LUTON.

NEW SEASON'S

Made in our own works
to measure from

ASK TO SEE THE

READY-TO-WEAR 42/- BL
OVERCOATS IN and Me
SMARTEST -
STYLES 50/- I2,

Values

RTS.

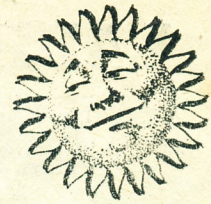
Chas. Mares
MENS WEAR, SCHOOL OUTFITS
GEORGE STREET LUTON.
Branch Store, 167 Dunstable Road

"For Size & 'Tone,' They stand alone."

SUNRIPE

EXTRA SIZE FINE VIRGINIA

CIGARETTES



10 for 6d.
20 for 1/- Also 50's

Manufactured by
The Spinet House,
Estd. 1775. London.

TOWN.

LEFT

3
Tirrell

6
Roe

10
Butcher

11
Bookman

15
Smith

16
Castle

19
Purdy

21
Burton

RIGHT

ATHLETIC.

m Castings Co.,
AD, LUTON.
s of every description.

Luton Town F.C. 2nd XI Fixtures.

1921.	Opponents.	Ground.	F. A.
Aug. 27	Norwich City	H.	2 0
Sept. 3	Norwich City	A.	0 1
.. 7	Boscombe	A.	0 1
.. 10	Bristol City	A.	0 1
.. 17	Bristol City	H.	1 0
.. 24	Plymouth Argyle	A.	0 6
Oct. 1	Plymouth Argyle	H.	3 2
.. 8	Southend United	A.	2 1
.. 15	Boscombe	H.	4 0
.. 22	Portsmouth	A.	1 2
.. 29	Portsmouth	H.	0 1
Nov. 5	Bedford Town (I.C.)	A.	3 1
.. 12	Luton Clarence (F)	H.	1 2
.. 19	Bath City	A.	1 0
.. 26	Bath City	H.	3 0
Dec. 3	West Ham (F)	H.	3 0
.. 10	Exeter City	H.	0 1
.. 17	Southampton	A.	0 2
.. 24	Southampton	H.	3 0
.. 26	Swindon	H.	3 2
.. 27	Swindon	A.	2 0
.. 31	Gillingham	A.	0 4
1922.			
Jan. 7	West Ham (F)	A.	2 2
.. 14	Gillingham	H.	0 1
.. 21	Reading	H.	0 1
.. 28	Reading	A.	0 0
Feb. 4	Bristol Rovers	H.	3 1
.. 11	Bristol Rovers	A.	0 5
.. 18	Clapton Orient (F)	H.	3 0
.. 25	Clapton Orient (F)	A.	0 3
Mar. 4	Luton Amateurs (F)	H.	5 1
.. 11			
.. 18	Brighton & Hove	H.	1 1
.. 25	Brighton & Hove	A.	0 5
.. 27	Millwall	A.	1 1
Apr. 1	Watford	A.	0 3
.. 8	Watford	H.	3 1
.. 14	Guildford	H.	4 0
.. 15	Charlton Athletic	A.	
.. 17	Guildford	A.	
.. 18	Southend United	H.	
.. 22	Charlton Athletic	H.	
.. 26	Millwall	H.	
.. 29	Clarence (I.C.)	H.	
May 6	Exeter City	A.	

GORDON STREET
County Electric
PAVILION.

When you have seen the Match
VISIT THE PREMIER CINEMA

Attractive
Holiday
Programme.

See Press Announcements.

TIMES OF OPENING

Good Friday - - 6 to 10.30

Saturday - 2.30 continuous

Easter Monday and Tuesday
from 2 p.m. continuous

Prices 5d. to 1/3.

High-class Programme always assured.

OVERCOATS

rooms
: : 63/-

NEW PATTERNS.

UNDELL BROS.

(Luton Ltd.)

n's Department,

Cheapside, LUTON.

SLATER'S,

COMPLETE CATERERS,

Park Square, LUTON.

TELEPHONE 255 LUTON.

PLACE YOUR ORDERS WITH US.

- WE GUARANTEE THE REST. -

SO GOOD AT THE PRICE!
W. GREEN'S
RED LUTONIAN ALE
 In CRATES of 4 Quarts.
 RATE. - 1/3 per QUART.
RED LUTONIAN STOUT
 In CRATES of 4 Quarts.
 RATE. - 1/5 per QUART.
 OBTAINABLE FROM ALL TENANTS & AGENTS.

Latest Values
 in
SHIRTS.
 5/11 to 8/11. **Chas. Mares**
 MENS WEAR. SCHOOL OUTFITS.
 GEORGE STREET LUTON.
 Branch Store, 187 Dunstable Road

"For Size & Tone, They stand alone."
SUNRIPE
 EXTRA SIZE FINE VIRGINIA
CIGARETTES
 10 for 6d.
 20 for 1/- Also 50's

AL
 delivered
 promptly
 Coal
 R Merchants
NALL
LAND
 Rd., Luton

Luton Town F.C. 1st XI Fixtures.

1921.	Opponents.	Ground.	F. A.
Aug. 27	Norwich City (0-3)	A	1 0
.. 29	Southampton (1-1)	H	0 0
Sept. 5	Norwich City (4-0)	H	2 1
.. 10	Southampton (1-1)	A	1 2
.. 14	Newport County (2-2)	H	4 0
.. 17	Exeter City (3-0)	H	4 0
.. 24	Newport County (0-2)	A	2 0
Oct. 1	Plymouth A. (1-1)	H	1 0
.. 8	Plymouth A. (0-1)	A	0 2
.. 15	Merthyr Town (1-0)	H	3 0
.. 22	Merthyr Town (1-4)	A	0 2
.. 29	Portsmouth (2-2)	H	1 0
.. 29	Portsmouth (0-3)	A	1 1
Nov. 5	Southend U. (4-0)	H	3 0
.. 12	Southend U. (1-1)	A	1 0
.. 19	Swansea Town (5-0)	H	3 0
.. 26	Swansea Town (1-1)	A	1 1
Dec. 3	Brighton (F)	A	1 1
.. 10	Exeter City (0-1)	A	1 0
.. 17	Millwall (0-0)	H	1 0
.. 24	Millwall (0-0)	A	1 1
.. 26	Swindon (1-9)	A	1 1
.. 27	Swindon (2-0)	H	2 1
Dec. 31	Gillingham (5-0)	H	7 0
Jan 7	F.A. Cup-Portsmouth A.	A	1 1
.. 11	F.A. Cup-(Replay)	H	2 1
.. 14	Gillingham (0-0)	A	1 0
.. 21	Reading (1-0)	A	1 2
.. 28	F.A. Cup-Aston Villa	A	0 1
Feb. 4	Bristol Rovers (0-5)	A	0 2
.. 11	Bristol Rovers (0-1)	H	1 2
.. 18	Brentford (0-1)	A	2 0
.. 25	Brentford (2-0)	H	3 0
Mar. 6	Reading (6-0)	H	0 1
.. 11	Aberdare	H	1 2
.. 18	Brighton & H. (1-1)	A	1 1
.. 25	Brighton & H. (3-2)	H	2 0
Apr. 1	Watford (1-0)	H	1 1
.. 8	Watford (0-1)	A	1 4
.. 14	Q.P. Rangers (1-4)	A	0 1
.. 15	Charlton Athletic	H	
.. 17	Q.P. Rangers (2-1)	H	
.. 22	Charlton Athletic	A	
.. 29	Northampton (0-1)	A	
May 1	Aberdare	A	
.. 6	Northampton (3-1)	H	

*New Clubs.

LUTON TOWN.

RIGHT

1 Bailey

2 Lennon

3 Tirrell

4 Molyneux

5 Walker

6 Roe

7 Hoar

8 Reid

9 Mathieson

10 Butcher

11 Bookman

O

12 Wilson

13 Steele

14 Thompson

15 Smith

16 Castle

17 Dudley

18 Whaley

19 Purdy

20 Goodman

21 Burton

22 Barnes

LEFT

RIGHT

CHARLTON ATHLETIC.

Referee: Mr. E. TOLFREE, Southampton.

Luton Aluminium Castings Co.,
 SOUTH ROAD, LUTON.
 Aluminium Castings of every description.

Luton Town F.C. 2nd XI Fixtures.

1921.	Opponents.	Ground.	F. A.
Aug. 27	Norwich City	H	2 0
Sept. 3	Norwich City	A	0 1
.. 7	Boscombe	A	0 1
.. 10	Bristol City	A	0 1
.. 17	Bristol City	H	1 0
.. 24	Plymouth Argyle	A	0 6
Oct. 1	Plymouth Argyle	H	3 2
.. 8	Southend United	A	2 1
.. 15	Boscombe	H	4 0
.. 22	Portsmouth	A	1 2
.. 29	Portsmouth	H	0 1
Nov. 5	Bedford Town (I.C.)	A	3 1
.. 12	Luton Clarence (F)	H	1 2
.. 19	Bath City	A	1 0
.. 26	Bath City	H	3 0
Dec. 3	West Ham (F)	H	3 0
.. 10	Exeter City	H	0 1
.. 17	Southampton	A	0 2
.. 24	Southampton	H	3 0
.. 26	Swindon	H	3 2
.. 27	Swindon	A	2 0
.. 31	Gillingham	A	0 4
1922.			
Jan. 7	West Ham (F)	A	2 2
.. 14	Gillingham	H	0 1
.. 21	Reading	H	0 1
.. 28	Reading	A	0 0
Feb. 4	Bristol Rovers	H	3 1
.. 11	Bristol Rovers	A	0 5
.. 18	Clapton Orient (F)	H	3 0
.. 25	Clapton Orient (F)	A	0 3
Mar. 4	Luton Amateurs (F)	H	5 1
.. 11			
.. 18	Brighton & Hove	H	1 1
.. 25	Brighton & Hove	A	0 5
.. 27	Millwall	A	1 1
Apr. 1	Watford	A	0 3
.. 8	Watford	H	3 1
.. 14	Guildford	H	4 0
.. 15	Charlton Athletic	A	
.. 17	Guildford	A	
.. 18	Southend United	H	
.. 22	Charlton Athletic	H	
.. 26	Millwall	H	
.. 29	Clarence (I.C.)	H	
May 6	Exeter City	A	

GORDON
 County
PAY

When you have
 VISIT THE PR

Attrac
Holiday
Program

See Press An

TIMES OF
 Good Friday
 Saturday = 2
 Easter Monday a
 from 2 p

Prices 5d.
 High-class Program

Kind of Service
 THE BEST.
 Tests of our Customers by offering—**EFFICIENCY with ECONOMY.**
 Giving up to this standard, and our vehicles are always **RELIABLE.**
 which can in any way be regarded as second rate.
 1 to demonstrate the truth of the foregoing.

RS-A-BANC, LORRIES or HIRE CARS,
 Write, Call or 'Phone

N. R. MASON,
 Chester Street LUTON

NEW SEASON'S OVERCOATS
 Made in our own workrooms
 to measure from : : **63/-**

ASK TO SEE THE NEW PATTERNS.

READY-TO-WEAR 42/- BLUNDELL BROS.
 OVERCOATS IN
 SMARTEST and Men's Department.
 (Luton Ltd.)

SLATER'S
 COMPLETE CATERERS,
Park Square, LUTON
 TELEPHONE 255 LUTON.

YOU PAY

Quality of your Coffee?—Inferior
usually, and is often the cause
of dissatisfaction.

DWELLA COFFEE
UNDEAD AND ROASTED
IS CONSISTENTLY
—THE BEST.

LTD., COFFEE EXPERTS, LUTON.

SMOKE COVINGTON'S TOBACCO

RESULTS.

on the Board.

CLUBS.	Half-time scores.
<i>First named is home team.</i>	
H Southend v. Reading	
I Swansea v. Bristol R.	
K Swindon v. Watford	
L West Bromwich v. Arsenal	
M Notts. F. v. Barnsley	
N Stoke v. Blackpool	
O Bristol C. v. Coventry C.	
P Palace v. Bradford	

on the Ground will give a letter and
would mean that the Half-time result
0-2 would mean that the Half-time

en, Ltd., Luton,
URERS OF
OF MACHINERY
ND STRAW TRADE.

team as a whole is a well-balanced side,
and one that does not require a lot of
improvement to win promotion.

Comprehensive reports of all
the matches in which the Luton
clubs are interested will be found
in the "Pictorial" and the
"Luton News," while in the
"Saturday Telegraph" to-night
you will find all the results.

THE
LUTON RED CROSS
SILVER PRIZE BAND
WILL PLAY.

THE BRITISH LEGION (LUTON BRANCH).

President: Major H. A. WERNHER.

TO EMPLOYERS OF LABOUR.

You are earnestly requested
to apply to Luton Branch of
The British Legion when in
need of Men, and thereby
help to absorb some of the
hundreds of Ex-service Men
at present out of employment.
Every care will be taken to
send suitable men to meet
requirements.

F. S. GENTLE,
Secretary.

5, UPPER GEORGE STREET,
LUTON.

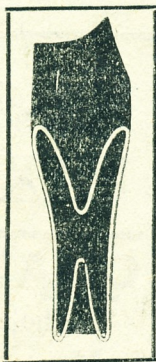
Barker,
SPEECHES MAKER.
AT MODERATE PRICES.
AND WORKMANSHIP.
SACTION ASSURED.

from £4 0 0

„ £4 10 0

ER ST., LUTON.

Luton 1015.



The "Patria"

TROUSERS Creasers and Reshapers. The cheapest, most
simple and most effective article of its kind on the
market. It forms a perfect crease and automatically
removes bagging from the knees, retaining the actual shape
of the trousers as when bought from your tailor. It is not
a clumsy press requiring thumbscrews, etc. to manipulate.
It is simplicity itself and is foolproof. Made from the
highest grade spring steel.

Post your order to-day with 3/6 to the

AURORA PRODUCTS CO.,
Offices: First Floor 80, CHAPEL STREET,
Luton Beds.

It will be better to have your New
SPRING SUIT
made by INWOOD,

WHERE you can be assured that the style and cut of your Suit will be perfect—produced by those who "know how."

Suits made to measure—in the newest cloths—priced from 75/-
HARRY INWOOD,
 The Smart Tailor and Outfitter,
 36, CHAPEL STREET, LUTON.

PHONE 854.

DO YOU

Sufficient attention to the blended Coffee varies enormously of disc

HINDO
 IS EXPERTLY BLENDING
 AND THE QUALITY

Sole Agents: **H. INWOOD**

The State of
YOUR HEALTH
 Largely Depends upon the
 QUALITY of your - -
FOOTWEAR

"Shoddy" Boots
 and Shoes are

"DEATH TRAPS."

GOOD BOOTS PAY!

Buy Your Footwear from
SYDNEY LANE,
 The Kenilworth Shoe Stores,
171, Dunstable Road,
LUTON,
 AND YOU WILL NOT REGRET IT.

COMMENTS.

Charlton Athletic and Aberdare are the babes of the League. The Welsh club came and defeated the Town by the only goal of the match. Now the London club have a turn. All things considered, they have done remarkably well this season, and it is a feather in their cap that they have managed to find several of their last season's players good enough for Third Division football.

Of the Charlton club's players, several went across the water from West Ham United, but the two most notable are R. Thomson, the old Chelsea centre-forward, and Arthur Whalley, the ex-Manchester City and Southend United half-back. These two players are at the moment the most notable figures in the side, but the

TO-DAY'S
 As shown

CLUBS.	Hal- tim- score
<i>First named is home team.</i>	
A Exeter C. v. Brentford	
B Gillingham v. Brighton	
C Merthyr v. Queen's P. R.	
D Millwall v. Aberdare	
E Newport v. Northampton	
F Plymouth v. Southampton	
G Portsmouth v. Norwich	

NOTE.—The Telegraph Board two figures only. *Illustration*—A was Exeter C. 2, Brentford 0. result was Exeter C. 0, Brentford 1

Brown & Green
 MANUFACTURERS
EVERY KIND
FOR THE FELT A



The Best and Most Lasting
GIFT.

A Piece of Jewellery or Plate.

HINDS
 5, PARK SQUARE.

Write for
 Gift Book.

A. E.
 TAILOR AND B
 HIGH GRADE TAILOR
 FAULTLESS CUT
 COMPLETE SAT

OVERCOATS
SUITS
 31, MANCHESTER
 Telephone

ter to have your New
RING SUIT
 made by **INWOOD,**

RE you can be assured that the style and cut
 your Suit will be perfect—produced by those
 now how.”
 measure—in the newest cloths—priced from 75/-
HARRY INWOOD,
 The Smart Tailor and Outfitter,
 36, CHAPEL STREET, LUTON.

DO YOU PAY
 Sufficient attention to the quality of your Coffee?—Inferior
 blended Coffee varies enormously, and is often the cause
 of dissatisfaction.
HINDOOWELLA COFFEE
 IS EXPERTLY BLENDED AND ROASTED
 AND THE QUALITY IS CONSISTENTLY
THE BEST.
 Sole Agents: **H. INWOOD, LTD., COFFEE EXPERTS, LUTON.**

SMOKE
COVINGTON
TOBACCO

HEALTH
 s upon the
 your - -
WEAR
 Boots
 s are
TRAPS.”
TSPAY!
 wear from
LANE,
 Shoe Stores,
 ble Road,
ON,
 OT REGRET IT.

COMMENTS.

Charlton Athletic and Aberdare are the
 babes of the League. The Welsh club
 came and defeated the Town by the only
 goal of the match. Now the London club
 have a turn. All things considered, they
 have done remarkably well this season,
 and it is a feather in their cap that they
 have managed to find several of their last
 season's players good enough for Third
 Division football.

Of the Charlton club's players, several
 went across the water from West Ham
 United, but the two most notable are R.
 Thomson, the old Chelsea centre-forward,
 and Arthur Whalley, the ex-Manchester
 City and Southend United half-back.
 These two players are at the moment the
 most notable figures in the side, but the

TO-DAY'S RESULTS.
 As shown on the Board.

CLUBS. <i>First named is home team.</i>	<i>Half-time scores.</i>	CLUBS. <i>First named is home team.</i>	<i>Half-time scores.</i>
A Exeter C. v. Brentford		H Southend v. Reading	
B Gillingham v. Brighton		I Swansea v. Bristol R.	
C Merthyr v. Queen's P. R.		K Swindon v. Watford	
D Millwall v. Aberdare		L West Bromwich v. Arsenal	
E Newport v. Northampton		M Notts. F. v. Barnsley	
F Plymouth v. Southampton		N Stoke v. Blackpool	
G Portsmouth v. Norwich		O Bristol C. v. Coventry C.	
		P Palace v. Bradford	

NOTE.—The Telegraph Board on the Ground will give a letter and
 two figures only. *Illustration*—**A 2 0** would mean that the Half-time result
 was Exeter C. 2, Brentford 0. **A 0-2** would mean that the Half-time
 result was Exeter C. 0, Brentford 2.

Brown & Green, Ltd., Luton,
 MANUFACTURERS OF
EVERY KIND OF MACHINERY
FOR THE FELT AND STRAW TRADE.

team as a whole is a well-balanced side,
 and one that does not require a lot of
 improvement to win promotion.

Comprehensive reports of all
 the matches in which the Luton
 clubs are interested will be found
 in the "Pictorial" and the
 "Luton News," while in the
 "Saturday Telegraph" to-night
 you will find all the results.

THE
LUTON RED CROSS
SILVER PRIZE BAND
WILL PLAY.

THE BRITISH
 (LUTON BRANCH)
 President: Major H. A. Y.
TO EMPLOY
OF LABO

You are earnestly
 to apply to Luton
 The British Legion
 need of Men, and
 help to absorb some
 hundreds of Ex-ser
 at present out of em
 Every care will be
 send suitable men
 requirements.
 F. S. G.

5, UPPER GEORGE STREET
 LUTON.

The Best and Most Lasting
GIFT.

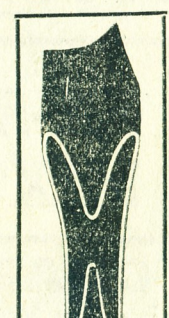
A Piece of Jewellery or Plate.

HINDS

A. E. Barker,

TAILOR AND BREECHES MAKER.
 HIGH GRADE TAILORING AT MODERATE PRICES.
 FAULTLESS CUT AND WORKMANSHIP.
 COMPLETE SATISFACTION ASSURED.

OVERCOATS - - - from **£4 0 0**
SUITS - - - - - " **£4 10 0**



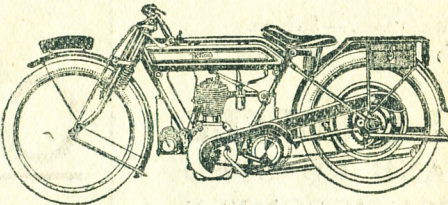
The "Patria"
 TROUSERS Creasers and Reshapers. The che
 simple and most effective article of its ki
 market. It forms a perfect crease and au
 removes bagging from the knees, retaining the a
 of the trousers as when bought from your tailor
 a clumsy press requiring thumbscrews, etc. to n
 It is simplicity itself and is foolproof. Made
 highest grade spring steel.

Post your order to-day with 3/6
AURORA PRODUCTS C
 Offices: First Floor 20, CHAPEL ST.

FRY PARSONS'
Smart Range of
NEW SUITINGS
NOW IN STOCK.

Windows:
8, Manchester St., LUTON.

NORTON.



PRICE £80 UPWARDS. District Agents:
DUNHAM & HAINES,
Chapel Street, Luton.

PALACE
*Always the Finest in
Variety - Pictures - Music.*

PUT AND TAKE
One Shilling Two hours enjoyment

Daily from 6 to 10.45 Phone Prices including Tax
Matinee, Weds. 2.30 443 1/- to 2/4.

The Dujon R
54, GEORGE S
Luncheons, Dinners, Teas,
Dinners, Dances, etc., speci
DUDENEY & JOHN
Phone. _____
also at Bedford and

BB BROS.,
(atters) LTD.,
RING, 1922.

are our prices with
London Stores and
will find them
LOWER.
Most Orders receive
ul attention and
money returned if
entirely satisfied.

ge St. & Bute St.
's Value Corner.

FOUR 5/- PRIZES



for spectators at Luton v. Charlton Match. Are you a winner? See the Tuesday Pictorial.

WEBB
(Outfit
Import
When
WEBB
de
A F
40
SUC
TR
George
Luton's

E. BARRETT,
e most Comfortable and Reliable
Char-a-bancs
the County. Book your dates early.

— TRY OUR —
EX-SERVICE MIXTURE : 7^{D.} Per Oz.
CHARLES BARKER,

FOR
Reliable Footwear
Try the
PUBLIC-BENEFIT BOOT CO.,

Lyndhurst Moto
Stockists of Michelin and Palme
Sold on Commission, or taken
— — any make of new
OVERHAULS, REPAIRS, SERV

LADIES' HATS

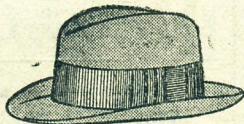
VELOURS, FELTS,
STRAWS, PANAMAS

REMODELLED

Into Newest Fashions
equal to New.

Gents' Velours & Felts

SAVE
MONEY



SAVE
MONEY

A Speciality-Trial Solicited

LADIES HAT-FIX Co.,
1, CHEAPSIDE, LUTON

SMITH'S,

MANUFACTURER OF

Umbrellas & Walking Sticks



FOR

LEATHER GOODS,
BAGS, PURSES,
WALLETS, ETC. -

54,
WELLINGTON ST.,
LUTON.

E. W. J. WHITELOCK,

ELECTRICAL ENGINEER,

has over 30 years experience with

ELECTRICAL
MOTORS
AND APPLIANCES

House, Shop, Office, Factory
LIGHTING.



A TRIAL SOLICITED.
CONSULTATIONS, &c.

4, Leagrave Road,
LUTON. Phone 167.

The Popular
LUTON

PICTURE PAPER

BEDS. AND HERTS.

PICTORIAL

and Tuesday Telegraph

PUBLISHED TUESDAY AT 4 P.M.
* ONE PENNY. *

Containing Four Pages of Interesting
Pictures of Events in Luton and
District and a Bright and Up-to-date
News Service.

Advertisement and Publishing Offices,
LUTON NEWS BUILDINGS,
Manchester Street, LUTON.
Phone 1121.