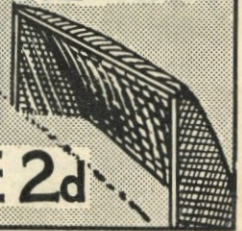




LUTON TOWN FOOTBALL AND ATHLETIC CO. LTD.

**OFFICIAL
JOURNAL**

PRICE 2d



League—Division II

October 8th, 1938.

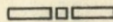
LUTON TOWN v. TOTTENHAM HOTSPUR

“TRUE-FORM”

THE FINEST FOOTWEAR
IN THE TOWN



BUY DIRECT FROM THE MAKERS



LOCAL BRANCH:

32, GEORGE STREET

Head Office and Factories: NORTHAMPTON

Insist upon the
Building Materials for
your new house coming from

POWDRILL'S

BUILDERS' MERCHANTS
COAL and COKE MERCHANTS
BRICK MANUFACTURERS
SAND & GRAVEL QUARRY OWNERS

GEORGE POWDRILL & SON LTD., 1, 3 & 5, HITCHIN ROAD, LUTON
TELEPHONE 2073 (2 Lines)

HELEY'S CAFE

MILL STREET

NEXT TO PALACE THEATRE, LUTON

DINNERS

11.30 — 2.30

TEAS

3.30 — 6

SUPPERS

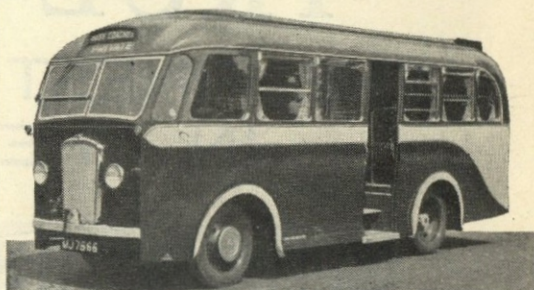
6 — 12

SPECIAL

FOOTBALL TEAS

FISH AND CHIPS
SAUSAGE AND MASH
— ETC. —

PROPRIETOR: A. S. HELEY



COOPERS COSY COACHES

F. J. COOPER LTD.

20, 26 and 30 Seater
Coaches for private hire,
also stream lined 7 Seater
Car for weddings and
long distances

OXEN ROAD GARAGE

'Phone LUTON 731

LUTON
FOOTBALL AND



TOWN
ATHLETIC CO.

Telephone No. 3151-2.

LIMITED.

President: Alderman Harry Arnold, C.A., J.P.

Vice-President: The Right Honourable E. Leslie Burgin, M.P., P.C., D.L.I.,
(His Majesty's Minister of Transport).

Directors:

Chairman: Alderman Chas. Jeyes, C.C.

E. Hugh Woods, Esq. (Vice-Chairman), Frank J. Andrews, Esq., Councillor Horace S. Hewson,
Percival G. Mitchell, Esq., Henry Richardson, Esq., C.C., Philip W. Wright, Esq.

Team Manager: Mr. Neil McBain.

Secretary: Mr. A. E. Wickson.

Honorary Medical Officer: E. J. Crarer, Esq., M.B., Ch.B.

Honorary Solicitors: Messrs Machin & Co., 17-19, George Street West, Luton.

CLUB NOTES by "Hatter"

SINCE our promotion to the Second Division it has been difficult to say which club provides us with our "Derby" game. There are quite a number of the London clubs who could claim this distinction, but I think, after reflection, that pride of place must be given to Tottenham Hotspur, our visitors this afternoon. The 'Spurs' are an exceedingly useful combination, as their record shows. At home they are undefeated although they have participated in two drawn games, curiously enough both being against the two Sheffield clubs, the game with the United resulting in both teams scoring twice, whilst against the Wednesday six goals were shared. They have only played three games away from home, winning at Southampton by the odd goal in three, being defeated by Notts Forest by a similar score and also losing to West Bromwich Albion by the odd goal in seven. This then proves them to be a team of no mean calibre and we can expect a ding dong struggle for supremacy this afternoon. The following are a few short notes concerning the men who today will be wearing the 'Spurs' jersey.

Hooper, P. G. (goal). A Londoner, born at Westminster. Played for Chedington and Islington Corinthians before joining 'Spurs' in 1933. Made 30 appearances in the first team last season.

Ward, R. A. (right back). Joined Tottenham in 1936, having been previously with Bradford.

Whatley, W. J. (left back). Born in Ebbw Vale. Came to Tottenham in 1929. Made his first appearance in the first team in 1932, and has been one of their most consistent players.

Spelman, I. (right half). Came to Tottenham in 1937 from Southend United. Has just obtained his place in the first team, but made 34 appearances in the London Combination last season.

Page, A. (centre half). Born at Walthamstow and played for Leyton. Represented the

Athenian League several times as an amateur before joining 'Spurs' in 1936.

Buckingham, V. (left half). Born at Greenwich. Played for Tottenham Juniors and Northfleet United before joining 'Spurs' in 1934. Made 29 appearances in the first team last season.

Sargent, F. (outside right). Born at Islington and played for Tufnell Park. Joined 'Spurs' in 1934. Played in every Football League match last season.

Hall, G. W. (inside right). Came to Tottenham in 1932 from Notts County. Played for England in every International Match last year, and was prevented from going on the tour on the Continent by injury.

Morrison J. (centre forward). Came to Tottenham in 1933, having previously played for Callenders Cables. Played in 39 League games last season, and scored 22 goals.

Hall, A. E. (inside left). Born at Swansea and came to Tottenham in 1935. Was one of their most consistent players in the London Combination last season, scoring 21 goals in 31 games.

Lyman, C. C. (outside left). Joined Tottenham from Northampton in 1937 and made 24 appearances in League games last season.

Last term the 'Spurs' completed the double at our expense, winning by four goals to two here and by three clear goals at White Hart Lane.

The game with Burnley, at Turf Moor, last week-end was a very poor affair so far as we were concerned and we make no complaints on our defeat. It is true, however, that a draw should have been forced for when a club notches an equaliser with only nine minutes of play remaining one would expect them to hold out. Our boys as a whole had a bad day and did not reproduce anything of the form shown against Sheffield United.

In comparison the 'Stiffs' have given us two excellent exhibitions, inflicting on Chelsea Reserves their first defeat of the season and following this up with a 6-1 victory over Leicester City. The match with Chelsea was exceedingly interesting and but for an excellent goalkeeping display on the part of Jackson, would have resulted in a much larger winning margin. I think all were delighted to once again welcome Joe Payne, even if in the 'Pensioners' colours, and it was he who notched the visitors' point.

On Wednesday last, Leicester City were overwhelmed by a first class forward line. The whole line played magnificently and no surprise would have been registered if double figures had been obtained. Well done 'Stiffs.' Keep it up.

Today the Reserves are at Charlton and on Monday pay the return visit to Leicester, whilst the 'A' team are at home at Bedford to Spalding, in a United Counties League venture.

We once beat the 'Spurs in the snow,
In a Cup Tie some years ago,
Last year they took trouble
To rub it in double,
Now it's our turn to have something to show.

If Smith teaches as well as he plays,
He's made for the rest of his days,
He kicks with the best
And tackles with zest,
And what's more, he goes on and stays.

There is a great player named Smith
Who clears his lines with a biff,
A master with ball
As well as at school
And sums up the Ref. in a jiff.

Crowd with great laughter were bent,
Band in a fit nearly went,
Flop went Tom's rind
At lemon time
Down the big bass instrument.

As a player he's fearless and strong,
From beginning to end he's ding dong,
Never shirking,
Ever working,
And that's that this time for Smith Tom.

A GLASSIC

Little Jackie Horner
Sat groaning in a corner
After eating his grannie's plum pie,
He pointed with his thumb
To his poor tum-tum
Wherein lay his grannie's glass eye!

A deceitful young Ref. was in a sore fix,
If he'd got one sore, well, he'd got six,
A poor laundry gal
Who knew him too well,
Had part of her own back by starching his knicks.
H.B.

PLAYER'S APPEARANCES

	League II		London Comb.		Utd. Counties League		F.A. Cup		Other Matches		Total	
	App.	Goals	App.	Goals	App.	Goals	App.	Goals	App.	Goals	App.	Goals
Billington, H. J. R. ...			11	10					1	1	12	11
Campbell, R. ...			1	1		4			1		5	1
Carroll, J. ...	1								1		7	
Carte, R. ...	2		4						1		7	
Clark, C. ...			3	2	4	2					7	4
Coen J. L. ...			11						1		12	
Connelly, E. ...	7	3							1		8	3
Dolman, H. W. ...	8								1		9	
Dreyer, G. ...			8	1					1		9	1
Dunsmore, T. H. ...	6								1		7	
Ferguson, C. ...	7	1	1						1		9	1
Finlayson, J. ...	8								1		9	
Gager, H. E. ...			11	1					1		12	1
Gardiner, D. ...					4						4	
Hogg, F. ...			7						1		8	
Kidd, G. I. ...			6						1		7	
King, T. P. ...			5		1						6	
Laing, J. F. ...					4	1					4	1
Lewis, J. ...			11						1		12	
Loughran, J. ...	8								1		9	
Lutterloch, B. R. ...			11						1		12	
Mayberry, S. ...					4						4	
Nelson, J. H. ...	8								1		9	
Redfern, W. J. ...	1		11	9					1	2	13	11
Roberts, F. ...	8								1	1	9	1
Smith, T. S. ...	8								1		9	
Stephenson, G. H. ...	8	1							1		9	1
Stevens, R. F. ...			10	4	1						11	4
Strathie J. ...			1		3						4	
Vinall, E. J. ...	8	5							1	1	9	6
Wale, J. ...			6		3						9	
Amateurs and Others	1		2		16	3					18	4

ATTENDANCE BAROMETER

	1937	1938	1937			1938				
			£	s.	d.	£	s.	d.		
Aug. 28	Aug. 27	Brighton & Hove Reserves ...				6356	144	15	3	
		Southend United Reserves ...	7346	167	0	3				
Sept. 1	Aug. 31	Newcastle United ...				17689	811	11	4	
		Aston Villa ...	25349	1299	14	4				
Sept. 4	Sept. 3	Norwich City ...				16547	747	0	6	
		Manchester United ...	20610	994	1	2				
Sept. 8	Sept. 7	Tottenham Hotspur Reserves ...				5955	131	1	7	
		Clapton Orient Reserves ...	4823	93	6	7				
Sept. 11	Sept. 10	Watford Reserves ...				7256	163	5	10	
		Chelsea Reserves ...	7725	175	7	7				
Sept. 18	Sept. 17	Southend Reserves ...				5826	126	10	7	
Sept. 22		Tottenham Hotspur ...	23788	1235	7	8				
		Leicester City Reserves ...	3626	69	19	2				
Sept. 25	Sept. 24	Sheffield United ...				17436	808	7	6	
		Queens Park Rangers Reserves ...	6558	142	1	11				
	Oct. 1	Chelsea Reserves ...				7831	182	7	4	
Oct. 2	Oct. 5	Bury ...	17650	821	19	0				
		Leicester City Reserves ...				1300	33	14	8	
			117475	4948	17	8	86196	3149	2	7

N.B. The attendance figures for both League II and London Combination matches, include the number of Season Tickets issued. The gate receipts are the net amounts received after Entertainment Tax has been deducted.

A.R.P.—A MAN'S JOB

The recent crisis has shown the public how much we now shall have to depend upon A.R.P. in a war emergency and how necessary it is that people should enrol and get their training while there's time.

The Football Association has given permission for appeals for A.R.P. volunteers to be made on all Football grounds. We gladly associate ourselves with this appeal and urge all followers of the national game to join their local A.R.P.

A.R.P. is a real man's job in which fitness and courage play a vital part, but courage and fitness are not enough, there must be efficiency, and efficiency only comes with training and experience.

We have escaped War for the time being and are thankful, but we must never be caught unprepared, so again we say, close up the ranks of A.R.P. and keep the country safe.

DO NOT MISS OBTAINING A COPY OF THE PROGRAMME ON SATURDAY, OCTOBER 15th. It will contain a full sized autographed Art Plate of Joe Coen.

Previous issues—August 31st, J. Nelson; September 3rd, H. W. Dolman; September 9th, G. Stephenson. Any supporter desirous of purchasing a copy should make application at the office, 70-72, Kenilworth Road, Luton. Price 2d.

PURCHASE A PROGRAMME AND HELP THE FOOTBALL CLUB.

Next Match, Monday, October 10th, 1938.

F.A. CUP (FIRST QUALIFYING ROUND—2nd REPLAY)

WATERLOW'S (Dunstable) v. BEDFORD TOWN

Kick - Off 3 p.m.

ADMISSION—Ground 6d. : Stand 1/-

EVERYBODY PAY

Saturday, October 15th, 1938.

FOOTBALL LEAGUE—DIVISION II

LUTON TOWN v. BRADFORD

Kick - Off 3.15 p.m.

ADMISSION—Centre Stand 5/- (Reserved Seats)

Stand and Enclosure 2/- Boys 1/- : Ground 1/- Boys 6d.

(ALL PRICES INCLUDE ENTERTAINMENT TAX)

1879!

59 years ago. Longer than most of us can remember. 6 years before the original Luton Town Football Club came into being, 13 years before the inception of the present Club. In this year the firm of Sell & Mitchell was founded, and for 59 years has built up an irreproachable reputation. Therefore in the selection of your house or the arranging of your mortgage, you cannot do better than seek the advice of this firm. Your enquiries will be dealt with in a courteous and efficient manner, and there will be no obligation incurred whatsoever.

SELL & MITCHELL*Auctioneers, Land & Estate Agents***7 & 9, PRINCESS STREET, LUTON**

'PHONE 2003/4

95, HIGH STREET NORTH, DUNSTABLE

'PHONE 354

A
Point
to remember!
E. A. ALLEN
the Printer of this
Programme
WILL GIVE SERVICE
AND SATISFACTION
424, DUNSTABLE ROAD
LUTON
Telephone 1626

**To-Day's Half-Time Scores****FIRST LIST**

A	IRELAND	v.	SCOTLAND
B	BIRMINGHAM	v.	BOLTON WAN.
C	BLACKPOOL	v.	CHELSEA
D	EVERTON	v.	WOLVES
E	HUDDERSFIELD	v.	ASTON VILLA
F	LEICESTER C.	v.	LIVERPOOL
G	MANCH. UN.	v.	CHARLTON A.
H	MIDDLESBRO'	v.	LEEDS UNITED
K	PORTSMOUTH	v.	SUNDERLAND
L	STOKE CITY	v.	PRESTON N. E.
M	BLACKBURN	v.	SHEFFIELD UN.
N	BURY	v.	BRADFORD

NOTE—The Letter in the Programme corresponds with the letter on the Board—thus A 0-1 means that the first-named Club has scored 0 and their opponents 1.

MONO  BRAND
REGD.

Specialities

Paint and Enamel
Manufacturers

"Stuart" Series
Wallpapers

**OGDEN &
CLEAVER**

Stuart Street, LUTON

TELEPHONE 580

**LUTON
GAS COMPANY**

JUST A TURN OF THE TAP
AND GAS GIVES INSTANT
HOT WATER, REAL FIRE-
SIDE COMFORT, CAREFREE
COOKING

Be up-to-date with Gas

Showrooms—GEORGE STREET
and DUNSTABLE ROAD

Wines & Spirits**L. GREENER***Wine Merchant*

60, WELLINGTON STREET
LUTON

DELIVERIES DAILY
LUTON & DISTRICT

TELEPHONE:
LUTON 2926

**H. R.
WILLIAMS**

REGISTERED
ELECTRICAL CONTRACTOR

*and Member of the**Electrical Contractors' Association*

17, DURHAM ROAD
LUTON

'PHONE: LUTON 2012

NEWBERY

& CO. (LUTON) LIMITED

32/36, CROMWELL ROAD**LUTON***Builders' Merchants**Ironmongers**Door and Gate Importers*

PHONE 294

PRIVATE 511

PHONE 223

EST. 1860

WHITE'S*again supply*

LUTON TOWN
FOOTBALL CLUB

WITH THEIR
FOOTBALL
BOOTS

*THEY know the Best***H. WHITE** (LUTON) LTD.

FOOTWEAR

of every description

MANCHESTER STREET
LUTON

To-Day's Half-Time Scores**SECOND LIST**

A	NEWCASTLE	v.	NOTTS. FOR.
B	NORWICH C.	v.	SOUTHAMPTON
C	PLYMOUTH	v.	BURNLEY
D	WEDNESDAY	v.	MANCH. CITY
E	TRANMERE R.	v.	CHESTERFIELD
F	WEST BROM.	v.	COVENTRY C.
G	BOURNEM'UTH	v.	CARDIFF C.
H	BRIGHTON & H.	v.	IPSWICH T.
K	BRISTOL ROV.	v.	READING
L	MANSFIELD T.	v.	SOUTHEND U.
M	NORTHAMPT'N	v.	BRISTOL CITY
N	NOTTS. CO'TY	v.	ALDERSHOT

S. J. HAWKINS

STATION WORKS. FLITWICK, BEDS.

'PHONE: FLITWICK 253

PNEUMATIC TYRED
TRUCKS, TROLLEYS AND
BARROWS
for all trades

WHOLESALE AND RETAIL

Send for List L101 Post Free

**CYCLES &
REPAIRS**

Get your new machine from

S. A. LEWIS**138, DUNSTABLE ROAD****LUTON**

PHONE 807

Terms from

2/-
Weekly

All kinds of
repairs executed
by experienced
workmen

don't get wet!
GET A MAC
 (OR A RAINCOAT)
 from
MARES!
 Many famous makes in stock
 Charles
MARES Limited
 GEORGE STREET, LUTON
 And at St. Albans

TODAY
PALACE THEATRE
 LUTON
 TODAY
 Walt Disney's First Feature Masterpiece
"SNOW WHITE and the SEVEN DWARFS"
 (U Beds. C.C.)

stick to beer
 BY ALL MEANS
J.W. GREEN'S
 J. W. GREEN LIMITED, The Brewery, LUTON
 Telephone - Luton 3131

L-M-S RAILWAY
 CHEAP TRIPS from LUTON
 To LONDON 2/6
 Weekdays—Any train after 12 noon
 Sundays—Any train
 Depart **Saturday, 15th October** Return Fares
 EVENING EXCURSION
6.15 p.m. NORTHAMPTON 1/7
Friday Night, 14th October
8 p.m. GLASGOW (Empire Exhibition) 23/6

Now is the time to purchase your **FOOTBALL GEAR**

JERSEYS
 KNICKS
 HOSE
 SHIN GUARDS
 BOOTS—ETC.
 Agents for Manfield Hotspur Football Boots

Dartboards and Darts a speciality

Roller Skates in Great Variety

Price Lists free on application

G. A. WILD AND SONS

Sports Outfitters
 14, Manchester Street, Luton
 103, High Street N., Dunstable

BOOK AT
BAILEY'S
 FOR
 LONDON COASTAL COACHES
 ALL INDEPENDENT SERVICES
 JERSEY AIRWAYS
 LONDON THEATRES
 AND
 AMUSEMENTS
 Daily Services to all parts of Great Britain
 TOBACCONIST
 AND BOOKING AGENT
38, NEW BEDFORD ROAD LUTON
 Phone 1972

LUTON TOWN
 Shirts White
 Knickers Black
 Stockings Black with White Tops

1 **Dolman** Goal
 2 **Smith** Right Back
 3 **Dunsmore** Left Back
 4 **Finlayson** Right Half
 5 **Nelson** Centre Half
 6 **Loughran** Left Half
 7 **Ferguson** Outside Right
 8 **Connelly** Inside Right
 9 **Vinall** Centre
 10 **Roberts** Inside Left
 11 **Stephenson** Outside Left
 12 **Lyman** Outside Left
 13 **Hall A. E.** Inside Left
 14 **Morrison** Centre
 15 **Hall G. W.** Inside Right
 16 **Sargent** Outside Right
 17 **Buckingham** Left Half
 18 **Page** Centre Half
 19 **Spelman** Right Half
 20 **Whatley** Left Back
 21 **Ward** Right Back
 22 **Hooper** Goal

Referee—**H. N. MEE** (Mansfield)

TOTTENHAM HOTSPUR
 Shirts Blue and White Hooped
 Knickers Blue
 Stockings Blue with White Hooped Tops

League—Division II
 Linesmen—
 Blue Flag: S. WILLETT (Coalville)
 Red Flag: W. E. WOOD (Bedford)

Kick-Off 3.15 p.m.

MODERN FIREPLACES HEATING APPLIANCES
 Up-to-date Sanitary Fittings in White and Colours
 For ARTISTIC WALLPAPERS
CHARLES BIRD & SONS LTD.
 COLLINGDON STREET LUTON
 Telephone: Luton 1255/1256
 For QUALITY PAINTS
 "Triplex" Safety Glass
 Motor Screens (Fitted)
 Makers of
 MIRRORS—SPLASH BACKS—GLASS SHELVES & GLASS FIRE SCREENS

HARRY CANHAM
 Cardboard Box
 Packing Case, Ply Box and
 Crate Manufacturer
9a, MARKET HILL, LUTON
 TELEPHONE 458

WAKE UP YOUR LIVER BILE

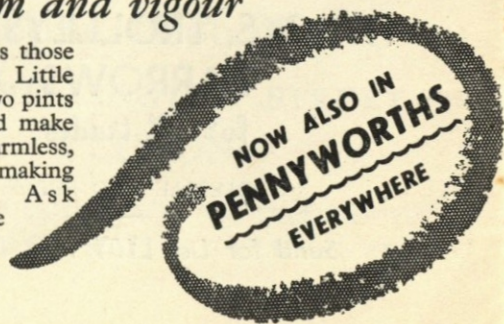
without Calomel—and you'll jump out of bed in the morning full of vim and vigour

YOUR LIVER should pour out two pints of liquid bile into your system daily. If this bile is not flowing freely, your food doesn't digest. It just decays inside you. Gas bloats up your stomach. You get constipated. Your whole system is poisoned and you feel sour, sunk, and the world looks punk.

Laxatives help a little, but a mere bowel movement doesn't

get at the cause. It takes those good old Carters Brand Little Liver Pills to get these two pints of bile flowing freely and make you feel "up and up." Harmless, gentle, yet amazing in making bile flow freely. Ask for Carters Brand Little Liver Pills.

Stubbornly refuse anything else. 1/3 and 3/- at all chemists.



IF YOU INVEST

your money in our Society it is not a question of

'HALF-BACK'

BUT THE WHOLE IS WITHDRAWABLE

whenever you want it

LUTON & MIDLANDS BUILDING SOCIETY

Telephone: Luton 1067

11, George St.
 West
 LUTON

WEBDALE'S

of WELLINGTON STREET

— FOR —

KITCHEN EQUIPMENT

AND ALL

HOUSEHOLD REQUIREMENTS

AT LOWEST PRICES

21 to 27, WELLINGTON STREET
 'Phone 41 LUTON

Charnley
and Sons
REGISTERED
OPTICIANS

NATIONAL HEALTH
INSURANCE

On the Official List of
H.S.A. OPTICIANS

11, Wellington Street
LUTON
Telephone 1808

Over 50 years in the
Printing Trade
in Luton
○○○○

W. F. BUNKER

WILL HELP YOU IN
THE PRODUCTION
OF YOUR PRINTING
REQUIREMENTS

26a, CHAPEL STREET
LUTON
PHONE 224

E. A. GREEN

BOOKSELLER
NEWSAGENT
STATIONER

Luton's Most Progressive
Circulating Library

21a, New Bedford Road
and 228, Biscot Road
LUTON

Telephone 476

F. WHITE

BUILDER
and
CONTRACTOR
141,
Stockingstone Road
LUTON

ALL CLASSES OF
REPAIRS, PAINTING
AND DECORATING
UNDERTAKEN

Estimates Free

To-Day's Half-Time Scores

THIRD LIST

A	SWINDON T.	v.	QUEEN'S P. R.
B	WALSALL	v.	EXETER CITY
C	BARROW	v.	N. BRIGHTON
D	BRADF'D CITY	v.	OLDHAM A.
E	DONCASTER	v.	CREWE ALEX.
3.30 KICK-OFFS				
F	ARSENAL	v.	GRIMSBY T.
G	BRENTFORD	v.	DERBY CO'NTY
H	FULHAM	v.	MILLWALL A.
K	WEST HAM U.	v.	SWANSEA T.
L	CLAPTON O'	v.	WATFORD
M	NEWPORT CO'	v.	CRYSTAL PAL.
N	TORQUAY U.	v.	PORT VALE

W. CHAMBERLAIN

Proprietors—
A. M. Chamberlain & Co.
R. Deadman
106, Dunstable Road
LUTON

Best British Made
Brushes and Brooms
Enamel Ware

City of London
White Lead Paint

Messrs Merrediths & Co.
Merlac Enamel Paints

Fadeless Wall Paper
Ask for Pattern Books

—□—
A TRIAL SOLICITED

W. HOLES

3, Gordon Street, Luton
Coal and
Coke Merchant

Authorised Agent for
Luton Gas Company's
large and graded coke

Agent for
L.M.S. Passenger Dept.

Telephone 210



TELEPHONE:
LUTON 2126

P. W. SMITH

Builder — Contractor
High Class Decorator

418, DUNSTABLE ROAD
LUTON



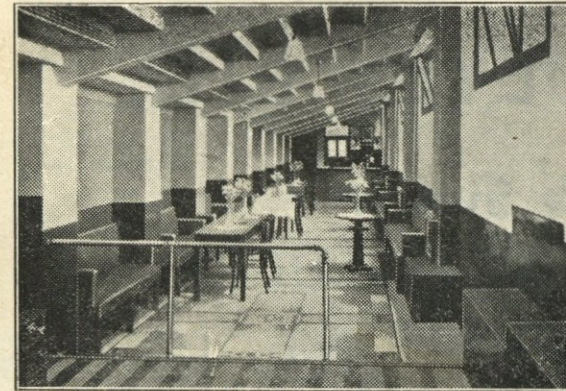
LUTON BOBBERS STAND CLUB

President: P. W. Wright, Esq.
Vice-Chairman: E. G. Gibbs, Esq.
Hon. Secretary: Mr. A. C. Wright
Hon. Treasurer: Mr. J. Collier

Committee:

Messrs W. Banks, F. Cooper, A. Flitton,
N. Lines, S. Setchell, R. G. Smith

TELEPHONE 2566



The contents in today's issue is of much importance to the sports section of the Club. The first stage of the great 'People' National Darts Teams Championship is now at hand and our Club has done exceedingly well in the draw, for of the 3 teams entered in this tournament one has drawn a bye, whilst of the other two, one is at home and the other is away. The Skittles Team had a good win on Tuesday

last, winning at the Brown and Green's Sports Club by 47 to 40.

The Bobbers Club Badges have had a big sale and are being much displayed. Fresh orders have been placed and it is up to all Bobbers to obtain one. The interior of the Club has been renovated throughout and the cleanliness and comfort offers a hearty invitation to non-members for inspection.

CALL AND PAY THE BOBBERS A VISIT.

**THE
CENTRAL
RESTAURANT**

20/22/24, CHEAPSIDE
LUTON

○○○

SEATING FOR 300 ESTABLISHED 60 YEARS

Phone 172 and book a table
and have your meal in comfort

WE CAN CATER FOR YOU
ANYWHERE
ANY TIME
ANY NUMBER

**A. E.
NICHOLLS**

Wholesale
CONFECTIONER & TOBACCONIST

CAN SUPPLY YOU WITH
EVERYTHING YOU WANT
FOR THE TOBACCO AND
CONFECTIONERY TRADE
AT LOWEST PRICES



Prompt Delivery and Civility

16, MILL STREET, LUTON

'Phone: Luton 902

FIXTURES, 1938 - 9

FIRST XI Division II

				F. A.
Sat., Aug. 27	West Bromwich Albion	...	A	0 3
Wed., .. 31	Newcastle United	4 1	H	2 1
Sat., Sept. 3	Norwich City	1 1	H	2 1
Mon., .. 5	Coventry City	1 2	A	0 1
Sat., .. 10	Manchester City	...	A	2 1
Sat., .. 17	Plymouth Argyle	4 2	A	1 4
Sat., .. 24	Sheffield United	2 3	H	2 0
Sat., Oct. 1	Burnley	2 3	A	2 3
Sat., .. 8	Tottenham Hotspur	2 4	H	
Sat., .. 15	Bradford	4 2	H	
Sat., .. 22	Swansea Town	1 1	A	
Sat., .. 29	Blackburn Rovers	4 1	H	
Sat., Nov. 5	Tranmere Rovers	...	A	
Sat., .. 12	West Ham United	2 2	H	
Sat., .. 19	Bury	4 3	A	
Sat., .. 26	Sheffield Wednesday	2 2	H	
Sat., Dec. 3	Fulham	1 4	A	
Sat., .. 10	Chesterfield	1 1	H	
Sat., .. 17	Millwall	...	A	
Sat., .. 24	West Bromwich Albion	...	H	
Mon., .. 26	Nottingham Forest	0 1	A	
Tues., .. 27	Nottingham Forest	2 2	H	
Sat., .. 31	Norwich City	4 0	A	
Sat., Jan. 7	Manchester City	...	H	
Sat., .. 14	Plymouth Argyle	1 1	H	
Sat., .. 21	Sheffield United	0 2	A	
Sat., Feb. 4	Burnley	3 1	H	
Sat., .. 11	Tottenham Hotspur	0 3	A	
Sat., .. 18	Bradford	1 1	A	
Sat., .. 25	Swansea Town	5 1	H	
Sat., Mar. 4	Blackburn Rovers	2 2	A	
Sat., .. 11	Tranmere Rovers	...	H	
Sat., .. 18	West Ham United	0 0	A	
Sat., .. 25	Bury	0 1	H	
Sat., April 1	Sheffield Wednesday	0 4	A	
Fri., .. 7	Southampton	1 3	H	
Sat., .. 8	Fulham	4 0	H	
Mon., .. 10	Southampton	6 3	A	
Sat., .. 15	Chesterfield	2 5	A	
Sat., .. 22	Millwall	...	H	
Sat., .. 29	Newcastle United	3 1	A	
Sat., May 6	Coventry City	1 4	H	

RESERVE FIXTURES London Combination F. A.

Sat., Aug. 27	Brighton & Hove A.	6 2	H	2 1
Mon., .. 29	Millwall	0 3	A	5 1
Sat., Sept. 3	Bournemouth	1 1	A	3 1
Wed., .. 7	Tottenham Hotspur	0 2	H	1 1
Sat., .. 10	Watford	2 0	H	1 2
Sat., .. 17	Southend United	3 1	H	4 0
Mon., .. 19	Tottenham Hotspur	3 5	A	2 2
Sat., .. 24	Queens Park Rangers	0 4	A	0 1
Wed., .. 28	Southampton	2 0	A	2 2
Sat., Oct. 1	Chelsea	1 1	H	2 1
Wed., .. 5	Leicester City	0 1	H	6 1
Sat., .. 8	Charlton Athletic	0 4	A	
Mon., .. 10	Leicester City	1 4	A	
Sat., .. 15	Fulham	1 5	A	
Sat., .. 22	Brentford	0 0	H	
Sat., .. 29	Arsenal	0 1	A	
Sat., Nov. 5	Clapton Orient	3 0	H	
Sat., .. 12	Portsmouth	0 0	A	
Sat., .. 19	West Ham	0 1	H	
Sat., .. 26	Northampton Town	1 1	A	
Sat., Dec. 3	Bristol City	3 1	H	
Sat., .. 10	Swansea Town	1 0	A	
Sat., .. 17	Crystal Palace	6 1	H	
Sat., .. 24	Brighton & Hove A.	1 1	A	
Mon., .. 26	Southampton	2 1	H	
Sat., .. 31	Bournemouth	2 1	H	
Sat., Jan. 7	Reading	3 1	H	
Sat., .. 14	Watford	2 3	A	
Sat., .. 21	Southend United	0 4	A	
Sat., .. 28	Queens Park Rangers	2 2	H	
Sat., Feb. 4	Chelsea	2 6	A	
Sat., .. 11	Charlton Athletic	2 0	H	
Sat., .. 18	Fulham	3 0	H	
Sat., .. 25	Brentford	0 3	A	
Sat., Mar. 4	Arsenal	1 2	H	
Sat., .. 11	Clapton Orient	7 0	A	
Sat., .. 18	Portsmouth	1 2	H	
Sat., .. 25	West Ham	1 1	A	
Sat., April 1	Northampton Town	3 3	H	
Fri., .. 7	Coventry City	0 1	A	
Sat., .. 8	Bristol City	2 3	A	
Mon., .. 10	Coventry City	4 0	H	
Sat., .. 15	Swansea Town	1 1	H	
Sat., .. 22	Crystal Palace	3 1	A	
Sat., .. 29	Millwall	5 1	H	
Sat., May 6	Reading	4 1	A	

LEAGUE TABLES

LEAGUE DIVISION II

	Pld.	Won	Lost	Drn.	For	Agst.	P.
Fulham	9	6	1	2	18	8	14
Blackburn Rovers	9	6	2	1	22	14	13
Millwall	8	5	1	2	20	7	12
Sheffield Wednesday	8	4	2	2	16	12	10
Tottenham Hotspur	8	4	2	2	18	14	10
West Brom. A.	9	5	4	0	24	20	10
Burnley	9	4	3	2	12	15	10
Sheffield United	8	3	2	3	12	8	9
Newcastle United	9	4	4	1	14	13	9
Bradford	8	4	3	1	15	16	9
Plymouth Argyle	8	4	4	0	13	11	8
Notts Forest	8	3	3	2	10	11	8
Coventry City	8	3	3	2	8	10	8
LUTON TOWN	8	4	4	0	11	14	8
West Ham United	9	3	5	1	21	17	7
Bury	8	2	3	3	12	14	7
Swansea Town	8	0	2	6	8	17	6
Manchester City	8	2	5	1	20	24	5
Southampton	8	2	5	1	10	17	5
Tranmere Rovers	8	2	5	1	9	16	5
Chesterfield	8	2	5	1	7	15	5
Norwich City	8	2	6	0	11	18	4

LONDON COMBINATION

	Pld.	Won	Lost	Drn.	For	Agst.	P.
Chelsea	10	8	1	1	23	7	17
Arsenal	10	8	1	1	39	16	17
Watford	12	7	2	3	24	19	17
LUTON TOWN	11	6	2	3	28	13	15
Queens Park Rangers	10	6	3	2	23	9	13
Portsmouth	10	5	2	3	27	15	13
Brentford	10	5	2	3	25	17	13
West Ham United	10	6	3	1	25	20	13
Tottenham Hotspur	10	5	3	2	24	13	12
Leicester City	12	5	5	2	30	32	12
Southend United	8	5	2	1	17	13	11
Fulham	11	4	4	3	14	14	11
Coventry City	9	5	4	0	25	13	10
Charlton Athletic	11	4	5	2	17	19	10
Swansea Town	11	4	5	2	12	15	10
Brighton & Hove A.	9	4	5	0	16	21	8
Bournemouth	11	2	5	4	16	23	8
Bristol City	12	4	8	0	17	31	8
Millwall	11	3	6	2	13	28	8
Crystal Palace	9	2	4	3	22	19	7
Southampton	10	1	7	2	16	33	4
Northampton	10	2	8	0	8	20	4
Clapton O.	11	1	8	2	9	29	4
Reading	10	1	8	1	14	45	3

Edward Martell & Co., Ltd.

TELEPHONE 896-7

Coal and Coke Merchants

ESTABLISHED 1879

24, UPPER GEORGE STREET, LUTON

Burn "Hucknall" Ashless Coal

It Scores Every Time!!

Popular Price! Saves Labour!! Great Heat!!!

WHY NOT TRY IT?

CARRY ON LUTON TOWN!

a packet of

SWEET ROSEMARY

TOBACCO

is always enjoyable

W. & F. FAULKNER LONDON

BRANCH OF THE IMPERIAL TOBACCO CO. (OF GREAT BRITAIN AND IRELAND), LIMITED

KODAK, ENSIGN & AGFA CAMERAS & FILMS

Developing, Printing and Enlarging by experts, high class work at reasonable prices

A. G. PRATT

M.P.S., F.S.M.C.

PHOTOGRAPHIC CHEMIST AND OPTICIAN

169, DUNSTABLE ROAD, LUTON

'PHONE 708

Your Goal for all Sports Goods PARTRIDGE'S

The House for Guaranteed
SPORTS GOODS

FOOTBALLS - JERSEYS - KNICKERS - HOSE
SHINGUARDS - BOOTS - GOAL NETS - KIT BAGS

Every requisite at lowest prices. Send for
our Winter Sports List today. It is free.

Special Terms to Clubs

A.G. Partridge & Co
PHONE 234 10-12 CHAPEL ST.
LUTON

You need



**EASY-RUNNING
& RELIABILITY**

in the Country!

MODELS FROM £5:10:0 CASH

(Sturmev-Archer 3-speed gear 21/- extra, cash)

Deferred Terms from

5/- down and 12 equal monthly payments (from
10/7). Sturmev-Archer 3-speed gear 2/1 extra,
monthly. Call for "The Book of the Raleigh."

NO CYCLE IS
COMPLETE
WITHOUT THE
FAMOUS STUR-
MEY - ARCHER
3-SPEED GEAR.

RALEIGH
THE ALL-STEEL BICYCLE

Printed by E A Allen, 424, Dunstable Road, Luton. 'Phone 1626.

Published by Luton Town Football and Athletic Co., Ltd., Kenilworth Road, Luton.