


CLAY WILLIAMS.




THE SWANS

OFFICIAL PROGRAMME

Published by

Swansea Town A.F.C. Ltd.



Vol. 23 No. 6)

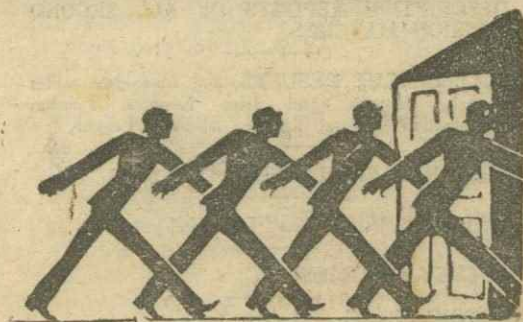
SATURDAY, OCTOBER 22nd, 1938

(TWO PENCE)

Luton v. Swansea Town

SECOND LEAGUE

Kick-off 3-0



BURBERRYS—
 DUNLOPS—
 DEXTER—
 RAINCOATS
 —full range always in stock

THE MEN WHO KNOW
 —QUALITY—COME TO

D. L. DAVIES
 "THE BON"
 COWER STREET

... for their Tailored Suits

SEE OUR NEW OVERCOATS
 —ranging from 3 gns. to 6 gns.

Up-to-date Sportsmen read

THE
South Wales
Evening Post

FOOTBALL EDITION

Your Own
Sports Paper
with

Up-to-the-Minute
Results & Reports

FIRST With The
Results
Every
Saturday Evening

SWANSEA TOWN'S MATCHES, Expert Criticisms
—By "Rolande."

WITH THE ALL-WHITES.—By "Pendragon."

DISTRICT LEAGUE SOCCER.—Special Articles

DESCRIPTIVE REPORTS OF ALL SECOND
DIVISION MATCHES.

FULL LEAGUE RESULTS, and up-to-date tables
English, Scottish, and Irish Leagues, London
Combination, Central League, Midland League.

BILLIARDS EACH WEEK.—By "Spider."

TABLE TENNIS.—By "Top-Spin."

HOCKEY.—By "Bully-off."

BOXING.—By G. G. Lowry

ABERAVON RUGBY.—By "Rover."

WITH THE ALL-BLACKS.—By "Rex."

"SCARLET" on Llanelli Football.

REPORTS OF ALL WEST WALES RUGBY
AND SOCCER MATCHES.

PLAZA Swansea's Supreme Luxury Cinema and Cafe

Always a tip-top programme with best reproduction.

CAFE open to General Public Daily from 2.0 to 10.30. Highest Quality Food. Tariff Comprehensive and extremely moderate. Quick Service. The most Popular Rendezvous in Swansea. Cinema Suppers a speciality.

WEEK COMMENCING OCT: 24th
FREDDIE BARTHOLOMEW
MICKEY ROONEY in

BOY FROM BARNARDO'S

(CERT. U).

OUR PRIZE SCHEME

Each Programme will be numbered, and the selected numbers will be exhibited on the Score Board. Holders of the Programmes with the corresponding numbers will be entitled to the following prizes:—

A.—2 Centre Stand Tickets for the Next First Team home match
B.—2 Tickets for the Carlton Cinema. C.—2 Tickets for the Elysium Cinema.
D.—2 Tickets for the Plaza Cinema. E.—2 Tickets for the Picture House
F.—2 Tickets for the Albert Hall Cinema. Per the Great Western Railway

Nº 6210

The Programmes must be produced at the Office, under Centre Stand, after the match.

CLUB NOTES

Since our last issue the Swans have played two games away from home, and in both instances met with defeat. At West Ham they were unfortunate to meet a team which could do nothing wrong in the first half, and the Hammers were full value for their interval lead of 3—0. The Swans had more of the play in the second half, and shared the four goals scored; Richardson's two goals were very well taken. It was the first time West Ham had netted five times against the Swans.

At Norwich last week, two unlucky miscalculations by defenders contributed much to the Swans defeat by 3—0, Norwich obtaining two gift goals. The verdict was hardly a correct reflex of the run of the play, which would have been better represented by a one goal margin. It was a much changed team at Norwich; perfect teamwork could not be expected, and this was the Swans chief defect.

This afternoon we receive a visit from Luton, who are situated several places above the Swans in the League table at the moment. Old third League opponents, they are making their second visit to Swansea as a Second League team. Last year, it will be recalled, Luton provided one of the hardest games of the season at the Vetch Field, and shared the points at the end of a gruelling game. Their away record up-to-date is not an impressive one, four of their five matches having been lost, but their goal-average suggests that their attack is superior and their defence more solid than that of the Swans.

Although Luton have never won a League match on our ground, rarely have they failed to give the Swans a rare struggle for the points. We anticipate the usual hard match this afternoon, but confidently expect the Swans to produce that all-round improvement which will bring them their first victory of the season.

Our supporters will get their first view to-day of Tom Paton, our new forward, who gave a most satisfactory first display with the team at Norwich last week. Paton is a Scottish Junior from Ayrshire, and joined Wolverhampton in June from the Ardeer club. His father was at one time a well-known player with Glasgow Rangers and later with Derby County.

We record with pleasure that our chairman, Mr. Owen Evans, is showing steady progress towards recovery from a serious illness. His guidance in the club's affairs has been much missed during the past six weeks. We feel sure we express the sincere thoughts of every follower of the club in wishing Mr. Evans a speedy return to the position he has filled with courage and distinction for so many years.

Saturday next at 3 p.m.

SOUTHAMPTON - - - Combination

Thursday, November 3rd, at 3 p.m.

GWYNFI - - - Welsh League

Poor finishing cost our Reserves three points in two home Combination matches last week. But although Crystal Palace won by two goals, and Reading shared the points in a 1—1 draw, both games were productive of some excellent football in which the Swans only fault was the sheer inability to round off their fine approach work. A goal-scoring forward would have kept the four points at the Vetch Field. Nevertheless the Reserves are playing very attractive football this season, with the result that the support accorded our reserve team matches is a big improvement on that of last year.

DON'T BUY
SHODDY GOODS—
IT DOESN'T PAY

You can have the best for a little more
Try it for all your
HOME AND WORKSHOP TOOLS, &c.

D. J. WEAVER
DILLWYN STREET, SWANSEA

GEORGE OWEN & SON

Ladies' & Gents' High-Class Tailors

22 UNION STREET, SWANSEA
Opposite Mond Buildings Tel.—2394
Mourning Orders Promptly Executed.

RICH, THE CHEMIST (Oxford Street) Ltd.

248, OXFORD STREET, SWANSEA

Can offer only complete Qualified Service including:—

Qualified DISPENSING, OPTICAL WORK, CHIROPODY, PHOTOGRAPHIC and

Joyped for Corns.

Surgical Chemist.

Telephone No. 2707

E. NENER & SONS

Plumbers, Sanitary and Heating
Electric Power and Lighting **Engineers**

17 Dillwyn St., Swansea

Phone—5484

B. T. REES

Radiator and Sheet Metal Specialist

Radiator Centres Fitted—Any Make.
—Oxy-Acetylene Welding, etc.—

53a OXFORD ST., SWANSEA

C. A. SANDER

CIGAR AND
TOBACCO MERCHANT

1 WIND ST., SWANSEA

LOOSE TOBACCO A SPECIALITY

ATHERTON'S CAFÉ

Opposite **THE EMPIRE**

For Refreshment of all description.

**SPECIALISTS in CHOCOLATES and EXPERTS in the
Making of COFFEE.**

Two Diplomas for Ices at Olympia.

Phone 4692

Empire Swansea

Phone 4692

6-30

TWICE NIGHTLY

8-40.

KENNETH HYDE presents

The Charter Players

in **"WHISTLING IN THE DARK"**

By Laurence Gross and Edward Childs Carpenter.
FROM THE COMEDY THEATRE, LONDON

Next
Week

Next
Week

PRICES OF ADMISSION (including Entertainment Tax): Boxes 12/- & 10/-; Orchestra Stalls 2/-; Dress Circle 1/6;
Centre Stalls 1/6; Pit Stalls 1/-; All bookable in advance. No extra charge for booking. Upper Circle 6d. (No Tax).

**JOIN THE
MODERN ARMY**



Which gives young men interesting work
with Mechanized Training

APPLY:—

**ARMY RECRUITING OFFICE
5 WIND STREET, SWANSEA
OR
Any Territorial Army Drill Hall**

Club Notes—*continued*

The first victory of the season in the Welsh League was recorded on Thursday, when Barry were beaten 5—0 at the Vetch Field. In this game we fielded a Combination League eleven, and Barry also brought down their Southern League side, with the result that the game produced some delightful movements. It took the Swans an hour to score one goal, Edwards netting with a glorious shot, but in the concluding period Bruce (2), Chedzoy and Connor indulged in a riot of scoring.

Our League team will be at Nottingham next Saturday, opposing the Forest. It will be the Swans 14th visit to the headquarters of the Forest, where in past years they have won on two occasions and drawn three times.

The attraction at the Vetch Field next Saturday will be the always popular Southampton in a Combination match. The Saints are again making an indifferent start in this League, and are among the four bottom clubs in the table at the moment.

AROUND AND ABOUT

Our supporters will join with us in extending good wishes to Mr. Dudley Folland, one of our directors, on the occasion of his marriage, which takes place on Friday of next week.

0 0 0

By comparison with last season's results, our League team show a decline of 4 points; on the other hand, the Combination League record of the Reserves indicates a gain of 6 points.

SWAN COACHES

SINGLETON STREET, SWANSEA

BEST IN THE LONG RUN

Geo. J. MARIN (1932) Ltd.

Automobile Engineers and Agents

Sole Distributors for Crossley Cars.

Agent for Hillman, Humber and Morris Cars.

GOOD GARAGE ACCOMMODATION.

Repairs Promptly Executed.

**OLYMPIC GARAGE, Oxford Street
SWANSEA Phone 4564**

WE NEVER CLOSE

JENKINS MOTORS LTD.

AA
★★★★
GARAGE

SWANSEA'S LEADING MOTOR AGENTS
AND GARAGE PROPRIETORS

RAC
OFFICIAL
REPAIRS

Phone 5107 (3 lines)

Garage 200 Cars
YORK STREET, SWANSEA

Around and About—continued

It is exactly ten years ago that the Swans had such a poor return as only 6 points from ten games.

0 0 0

Connelly, who will probably be in Luton's team this afternoon, was a colleague of Imrie's at Newcastle last season, joining Luton later in the season.

0 0 0

Two of our "A" team boys made their debut with the Reserves last week. In the Crystal Palace game, young Phillips appeared at outside-left, and against Reading the young full-back, Sheppard, had his first taste of big football. Both boys fully justified their inclusion in the team.

0 0 0

Good wishes will be extended to our goalkeeper, Roy John, who is playing for Wales at Cardiff this afternoon.

0 0 0

Merthyr and Aberdare monopolise the Welsh attack in to-day's game. Hopkins, Astley and Bryn Jones are Merthyr boys, and Leslie Jones and Cumner hail from Aberdare.

0 0 0

Luton's Town's centre-half, Nelson, is voted one of the best defensive players in the League. He was with Preston at the same time as Joe Craven, the ex-Swan.

FOOTBALL BOXING BOWLS

The most informative and critical
Articles on Sport by competent
Critics are features of the

Swansea Guardian

SWANSEA'S
BROAD-MINDED
WEEKLY

SOCCER by "Athos"
RUGBY by "Winger"

EVERY FRIDAY
—ONE PENNY—

Electrical Contractors, Collieries, Steelworks and Industrial Undertakings obtain lowest prices, highest quality and quickest service from

WOODHALL'S
WEST
WALES
WIRELESS & ELECTRICAL
WHOLESALE
WAREHOUSE
SWANSEA

Goat St.

Buy in the best market.
Free Quotations for all
ELECTRICAL
EQUIPMENT

The League Tables.

SECOND LEAGUE

	P.	W.	L.	D.	Goals F.—A.	Pts.
Fulham	11	7	2	2	20—10	16
West Bromwich	11	7	4	0	28—21	14
Newcastle U.	11	6	4	1	23—14	13
Sheffield U.	10	5	2	3	16—10	13
Tottenham	10	5	2	3	19—14	13
Blackburn R.	11	6	4	1	25—19	13
Millwall	10	5	3	2	22—11	12
Sheffield W.	10	5	3	2	22—17	12
Bradford	10	5	3	2	18—18	12
Burnley	11	5	4	2	15—18	12
Plymouth A.	10	5	4	1	14—11	11
West Ham	11	4	5	2	26—19	10
Luton T.	10	4	4	2	13—16	10
Coventry City	10	3	4	3	9—13	9
Notts Forest	10	3	4	3	10—15	9
Norwich City	10	4	6	0	16—19	8
Bury	10	2	4	4	12—15	8
Southampton	10	3	6	1	15—22	7
Chesterfield	10	3	6	1	8—16	7
Manchester City	10	2	6	2	21—27	6
Swansea Town	10	0	4	6	10—25	6
Tranmere Rovers	10	2	7	1	10—22	5

LONDON COMBINATION LEAGUE

	P.	W.	L.	D.	Goals F.—A.	Pts.
Arsenal	13	10	2	1	47—19	21
Chelsea	13	9	3	1	26—12	19
Luton	14	8	3	3	37—18	19
Watford	14	8	3	3	28—24	19
Portsmouth	13	7	3	3	33—21	17
O. Park Rangers	12	7	4	1	26—13	15
West Ham	12	7	4	1	28—25	15
Coventry	11	7	4	0	32—15	14
Brentford	13	5	4	4	31—25	14
Tottenham	13	5	5	3	28—20	13
Crystal Palace	12	5	4	3	32—21	13
Fulham	13	5	5	3	16—20	13
Swansea Town	14	5	6	3	15—19	13
Leicester	15	5	7	3	30—44	13
Southend	10	5	3	2	18—15	12
Charlton	14	5	7	2	22—24	12
Brighton	11	6	5	0	21—28	12
Bournemouth	13	3	5	5	19—25	11
Bristol City	14	5	9	0	24—26	10
Millwall	13	4	7	2	16—31	10
Southampton	13	2	9	2	20—38	6
Northampton	12	3	9	0	13—28	6
Reading	12	2	8	2	22—48	6
Clapton Orient	14	2	10	2	14—38	6

Goddard Jones COLLEGE STREET for Chocolates

We invent, others copy. Please note—
"Winall" Cigarette Tobacco, 9d. per oz.
Can only be obtained from

EDWIN HALL
THE TOBACCONIST

Opposite the Hospital, SWANSEA

Try My Own Blend for Pipe, 1/- per oz.
Sweet and Cool Smoking.

After the Match

visit

WOOLWORTH'S
CAFETERIA

HIGH ST., SWANSEA

Quick Service

Best Quality Food

at usual Popular Prices

GEO. A. TANDY
40 St. Helen's Road
SWANSEA



QUALITY SPORTS KIT
AT LOWEST PRICES.
We equip the "SWANS."
Phone 2778

PICTURE HOUSE
High St. Under Management Associated British Cinemas Ltd.
MONDAY, OCTOBER 24th FOR 3 DAYS
JOHN BARRYMORE Bulldog Drummond's Peril (u)
JOHN HOWARD STELLA ARDLER JOHN PAYNE—LOVE ON TOAST (u)
THURSDAY, OCTOBER 27th FOR 3 DAYS
KATHARINE HEPBURN Bringing up Baby (u)
CARY GRANT LESLIE PERRINS, ANTHONY HOLLIS in ROMANCE A LA CARTE (u)

Before and after the Match
DINE AT
The PARK Fish Restaurant
PORTLAND STREET
SWANSEA
(Opposite Centre Market Gate)

Quality, Service, Cleanliness & Comfort
can be fully enjoyed at

The PARK Fish Restaurant

QUALITY SCORES!

MERRIMAN & STEPHEN Ltd

CAN SUPPLY BETTER COAL
YOU WITH

OYSTERMOUTH ROAD SWANSEA
TELEPHONES: 4893-6076

ACKLAND'S MOTOR GARAGE Ltd.

York Street SWANSEA
Telephones—4119 (after hours 2500).

Agents for **STANDARD, TERRAPLANES** and **VAUXHALL**
Service in its fullest meaning given to Customers.
Repairs, Spare Parts and Accessories.

The Carlton

Under Management Associated British Cinemas Ltd.
OXFORD STREET
NEXT WEEK

Jack Oakie - Bob Burns - Kenny Baker - Ann Miller

RADIO CITY REVELS SHOWING 3-29 6-12 8-55

RITA HAYWORTH and CHARLES QUIGLEY in

CIRCUS SHADOWS SHOWING 2-25 5-8 7-51

LMS

London, Midland & Scottish Railway

Full particulars can be obtained at Stations.

Cheap Day and Half-Day Tickets are issued daily **TO SWANSEA** Victoria and St. Thomas

from Local Stations (Pontardulais to Mumbles Road inclusive) and from Stations, Brynamman to Upper Bank, by any train. Special excursions are run for most away games

TRAVEL L.M.S.

Please ask for card folder giving train services and fares.

KEEP WARM IN A SNIPPER'S OVERCOAT

You will be well protected in a **SNIPPERS' OVERCOAT** while watching the match

Get a Stylish, Hand-tailored, Ready-to-wear Overcoat from the Extensive Selection at

Snipper Bros.
LTD.

TAILORS

234 Oxford St., SWANSEA

WAKE UP YOUR LIVER BILE

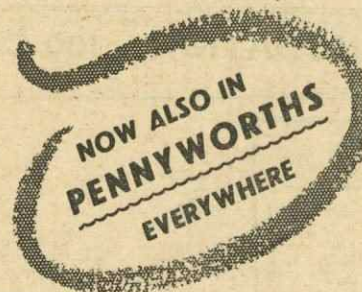
without Calomel — and you'll jump out of bed in the morning full of vim and vigour

YOUR LIVER should pour out two pints of liquid bile into your system daily. If this bile is not flowing freely, your food doesn't digest. It just decays inside you. Gas bloats up your stomach. You get constipated. Your whole system is poisoned and you feel sour, sunk, and the world looks punk.

Laxatives help a little, but a mere

bowel movement doesn't get at the cause. It takes those good old Carters Brand Little Liver Pills to get these two pints of bile flowing freely and make you feel "up and up." Harmless, gentle, yet amazing in making bile flow freely. Ask for Carters Brand Little Liver Pills.

Stubbornly refuse anything else. 1/3 and 3/- at all chemists.



SWANSEA TOWN		
RIGHT		LEFT
	1 Moore	
	2 Lawrence	3 Emmanuel
	4 Harris	5 Simons
7 Richardson	8 Paton	9 Bamford
	Referee— Mr. G. H. Blackhall, Wednesbury.	10 Olsen
16 Stevenson	15 Roberts	11 Millington
	14 Loughran	12 Ferguson
	19 Dunsmore	13 Connelly
	21	14 Vinall
		15 Nelson
		16 Smith
		17 Finlayson
		18 Dolman
		19
		20
		21
		22
		23
LEFT		RIGHT
		LUTON

PLEASANCE and HARPER LTD

For Diamond Rings—Engagement & Wedding Rings

All the latest modern Styles at moderate prices

Free Insurance with all Rings over £5. Send for illustrated Ring Book

5, College Street, Swansea.

FOR DISTINCTIVE EYEWEAR AND SERVICE

C. F. WALTERS, F.S.M.C.

CONSULTING OPTICIAN.

226 Oxford Street, Swansea

19 The Parade, Neath

Telephone No—Swansea 4516

Make straight for a Good Night's Entertainment after the Match.

UNDER MANAGEMENT OF A. B. C. LTD.

MADELEINE CARROLL and HENRY FONDA

in **BLOCKADE** (A)

also **BOBBY BREEN** in

HAWAII CALLS (U)

ALBERT HALL

GUNS AND AMMUNITION—

Hammer Guns, 50/-, 70/-, 90/-, 105/-

Hammerless Guns, £5/5/0, £6/10/0, £7/15/0 to £25.

Cartridges, 13/-, 14/6 and 17/- per 100

THE ONLY PRACTICAL GUNSMITHS IN WALES.

BEN EVANS & Co.

LIMITED

Sports Outfitters

SWANSEA

CAFE, RESTAURANT AND GENT'S SMOKE ROOM

Fishing Tackle for Sea and Fresh Water, Footballs, Jerseys, Knickers, Boots, etc

Hockey, Badminton, Boxing Gloves and Cricket, Golf and Tennis Requisites.

Punching Balls of every description

Repairs executed on the Premises

Telephone 5015.

After visiting the New Swans visit an
Old Swan—

Billie Hole

Newsagent, Tobacconist and Confectioner,
Librarian,

66 ST. HELEN'S ROAD
SWANSEA.

Before the Match

GARAGE YOUR CAR AT

FLETCHER'S GARAGES

(NELSON STREET)

Car Park 6d. Under Cover 1/-

ACCOMMODATION : 100 CARS

Swans 2nd League Comparative Results.

	1925 -26	1926 -27	1927 -28	1928 -29	1929 -30	1930 -31	1931 -32	1932 -33	1933 -34	1934 -35	1935 -36	1936 -37	1937 -38
Blackburn	H	1-2	3-2
	A	0-4	1-3
Bradford	H	3-1	2-4	2-1	1-0	3-1	5-1	0-0	1-2	3-0	0-1
	A	1-3	0-3	5-1	1-2	0-1	1-5	1-3	1-1	1-1	1-0
Burnley	H	1-1	5-1	2-0	3-0	2-0	1-3	3-0	3-1
	A	2-2	1-4	2-1	1-3	0-3	2-5	0-0	0-2
Bury	H	2-1	5-2	2-0	2-1	1-1	1-0	4-1	2-0	1-0
	A	0-1	0-2	1-2	0-3	1-4	1-2	1-2	0-2	0-0
Chatterfield	H	1-1	3-0	4-1	1-0
	A	2-1	0-1	0-4	1-4
Coventry	H	2-0	3-3
	A	1-2	0-5
Fulham	H	6-0	4-2	2-1	3-0	1-0	2-0	0-2	3-0	2-0
	A	1-0	3-4	2-3	1-3	0-1	1-4	1-0	0-5	1-8
Luton	H	1-1
	A	1-5
Manchester C	H	..	1-3	5-3
	A	..	1-3	4-7
Millwall	H	2-0	3-1	4-1	4-0	1-0	2-0
	A	0-3	2-0	1-3	1-3	1-3	1-2
Newcastle	H	3-4	1-2	1-2	2-0
	A	1-5	0-2	1-5	0-1
Norwich	H	1-1	4-3	2-1	1-0
	A	2-2	1-0	0-1	1-1
Notts Forest	H	3-0	2-1	2-0	3-5	1-1	3-2	4-1	0-1	1-1	3-0	2-1	1-0
	A	2-0	2-2	2-0	1-2	0-1	0-3	1-6	2-2	2-4	0-1	2-2	1-2
Plymouth	H	2-0	4-1	0-1	2-1	3-0	2-0	0-1	1-0
	A	0-0	2-4	0-1	2-2	2-3	2-1	0-0	2-2
Sheffield U.	H	0-0	1-3	2-1	3-5
	A	1-1	1-4	0-1	1-1
Sheffield W.	H	2-2	1-1
	A	1-3	1-1
Southampton	H	3-1	2-2	2-0	1-1	2-2	0-1	3-4	2-1	1-0	0-1	0-0	5-1
	A	1-4	1-1	2-0	0-3	1-2	0-3	0-2	0-2	0-1	0-1	3-4	1-2
Tottenham	H	4-0	0-1	1-2	1-1	0-2	1-1	2-1
	A	1-1	0-3	1-1	2-6	0-7	2-7	1-3
Tranmere	H
	A
West Brom.	H	3-2	6-1	1-0	1-1
	A	2-5	1-5	2-6	0-0
West Ham	H	1-0	1-1	5-4	0-1	0-0	0-0
	A	1-3	1-1	0-2	0-4	0-2	1-2

Around and About—continued

Tom Jones, a goalkeeper from Aberdare, has come to the Vetch Field on a month's trial. He is reputed to be the best custodian in the Welsh League, and is ideally built for the position.

0 0 0

So many half-truths have been published concerning Horace Cumner and the Swans, that we think it necessary that the facts should be given. At the same time we would suggest that a local football writer should be well advised to be quite certain of his information before putting it into print.

Cumner played four games for our "A" team towards the end of April a few years ago. At the close of the season he appeared in the Urdd Gobaith series of football matches at Aberystwyth, where he was approached by an Arsenal "scout," promptly signed, and taken to the club's nursery at Margate. There he remained for a couple of seasons before being loaned by the Arsenal to Hull City during the latter part of last season. In August he returned to Highbury, an injury to Bastin gave Cumner his chance, and it is to the boy's credit that he took it. He plays in his first game for Wales to-day, and we wish him a successful debut.

Mention of Cumner reminds us that Jack Roberts, a Cwmbwrla boy, is doing well for Bolton Wanderers. In referring to the fact, this week, an up-line paper announced that Roberts was a Merthyr boy!

For Advertisement Spaces on this
Programme, apply at the
Vetch Field.

Swans' GOALSCORERS

* * *

LEAGUE TEAM.

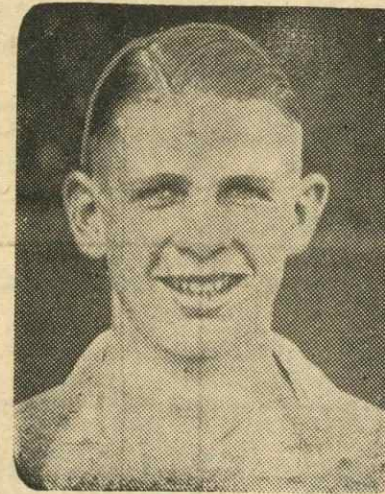
Bamford 1	Rhodes 1
Bruce 1	Olsen 2
Lewis 1	Millington 2
Richardson 2		

RESERVE TEAM.

Connor 6	Edwards 2
Chedzoy 5	Squires 1
Williams 3	Harris (J). 2
Bruce 2		

**DON'T
FORGET
OUR
ADVERTISERS**

Cameos of the Swans



Photo—Evening Post

IRVINE PAYNE.

Inside-forward in our Juniors' Welsh League team. A native of Briton Ferry, 17½ years old, and in his first season as a professional. Known to his pals as "Joe." Played for Briton Ferry schoolboys and in international trials, and later for the Brynhyfryd A.F.C., from whom he joined the Swans "A" team last season. Has a natural aptitude for the game, possesses two good feet, and should develop into a grand player. Height 5 feet, 8½ ins., weight 9 stone, 4 lbs.

Ring up 3289—or call upon

GEORGE CARPENTER

*for the Best Fish
Game and Poultry*

76 St. Helen's Rd., Swansea

SHACKLETON'S

High-Class Confectioners and Tobacconists

8 PORTLAND STREET
and
3 ST. HELEN'S ROAD
SWANSEA

Don't forget to give a call at

D. C. DAVIES'

HAIRDRESSER TOBACCONIST
NEWSAGENT

58 Plymouth Street, Swansea

PHONE 3327

ESTABLISHED 1907

ALBERT ACE

—The Cycle Specialist—

23 Dillwyn Street, Swansea

FOR B.S.A. CYCLES

HY. C. DODD

Cabinet Maker and Renovator

Cabinet Making French Polishing Upholstering
Suites Modernised.

Works: 24 Glamorgan St., Swansea

Estimates Free

Send a Postcard

After the Match—

FOOD—THE BEST
SERVICE—PROMPT
CHARGES—REASONABLE
COMFORTABLE

Enjoy a Good TEA at

TAYLOR'S CAFE

First Floor

6 Castle Square, Wind Street,
SWANSEA.

SPECIAL FISH TEAS

1/6

To-day's Half-time Scores

A	Blackburn v. Tottenham
B	Bradford v. Plymouth
C	Bury v. Notts Forest
D	Chesterfield v. Norwich
E	Fulham v. Southampton
F	Manchester City v. Sheffield U.
G	Millwall v. Burnley
H	Sheffield W. v. Coventry
K	Tranmere v. West Bromwich
L	West Ham v. Newcastle
M	Northampton v. Cardiff
N	Wales v. England



EXCURSIONS

from
SWANSEA High St.
will be arranged in connection with
SWANSEA TOWN A.F.C.
"AWAY" MATCHES
as follows:—

Date of Match	to	Opposing Team	Fare
December 10th.	Plymouth	Plymouth Argyle	15/3

Accommodation reserved for parties.

Further information may be obtained from

Mr. G. MATTHEWS, Divisional Superintendent,
High Street Station, Swansea.

YOU WILL BE GLAD YOU CHOSE A

CHATTANETTE GRATE

With its Cheery Open Fire and Ample Cooking and Baking Facilities

With this modern "CHATTANETTE," Combination Grate installed in your home you can always be sure of excellent cooking and baking facilities, an abundant supply of hot water and an open cheery fire, with the smallest possible consumption of fuel. It is supplied in easy-to-clean coloured enamel finished and is most attractive in appearance.

A CAPITAL RANGE WITHOUT CAPITAL.

Make use of our Deferred Payment Scheme and let us instal a "Chattanette" in your home for a small deposit.

PRICES from £6 15s.

SEE IT IN OUR SHOWROOMS

South Wales Builders' Supply Co. Ltd.

Phone 2186-7 Swansea 7 & 62 WIND ST., SWANSEA Grams "Alive."

Doors open 2.15
Continuous from 2.30

ELYSIUM

HIGH STREET

MONDAY OCT. 24th

BARRIE K. BARNES
SOPHIE STEWART in

"WHO GOES NEXT"

AMAZING DRAMA OF THE GREAT WAR

SHOWING AT 3-4 6-20 9-5

ALSO BORNEO—THRILLING JUNGLE ADVENTURE

1938 FIRST TEAM			1938 RESERVE TEAM		
		F.A.			F.A.
Aug.	27—Manchester C.	A 0-5	Aug.	27—Watford (L)	H 2-2
	29—Bradford	A 1-1		29—Leicester City (L)	A 1-6
Sept.	3—Millwall	H 1-1	Sept.	3—Millwall (L)	A 0-0
	5—Chesterfield	H 1-1		5—West Ham (L)	A 0-1
	10—Blackburn R.	A 0-4		10—Fulham (L)	H 2-0
	17—Fulham	A 1-1		14—Brighton (L)	A 0-2
	24—Sheffield W.	A 1-1		17—Brentford (L)	A 1-2
Oct.	1—Bury	A 3-3		22—Leicester City (L)	H 2-0
	8—West Ham	A 2-5		24—Arsenal (L)	H 1-2
	15—Norwich City	A 0-3		24—Aberaman (W)	A 0-6
	22—Luton	H —		29—Bristol City (L)	H 2-0
	29—Notts Forest	A —	Oct.	1—Clapton Orient (L)	A 1-0
Nov.	5—Sheffield U.	H —		3—Newport County (W)	A 0-3
	12—Burnley	A —		8—Portsmouth (L)	H 2-1
	19—Tottenham	H —		8—Treharris (W)	A 1-2
	26—Southampton	A —		13—Crystal Palace (L)	H 0-2
Dec.	3—Coventry City	H —		15—Reading (L)	H 1-1
	10—Plymouth Argyle	A —		20—Barry (W)	H 5-0
	17—Newcastle	H —		22—Coventry City (L)	A —
	24—Manchester C.	H —		27—Troedyrhiw (W)	A —
	26—West Bromwich	A —		29—Southampton (L)	H —
	27—West Bromwich	H —	Nov.	3—Gwynfi (W)	H —
	31—Millwall	A —		5—Tottenham (L)	A —
1939				5—Cardiff Corries (W)	A —
Jan.	14—Blackburn R.	H —		10—Cardiff City (W)	H —
	21—Fulham	A —		12—Charlton (L)	H —
	28—Sheffield W.	H —		12—Tredomen W. (W)	A —
Feb.	4—Bury	A —		17—Caerau (W)	H —
	11—West Ham	A —		19—Chelsea (L)	A —
	18—Norwich City	H —		19—Milford U. (W)	A —
	25—Luton	A —		23—Crystal Palace (L)	A —
Mar.	4—Notts Forest	A —		26—Queens Park (L)	H —
	11—Sheffield U.	A —	Dec.	1—Aberaman (W)	H —
	18—Burnley	H —		3—Southend (L)	A —
	25—Tottenham	A —		10—Luton (L)	H —
April	1—Southampton	H —		17—Bournemouth (L)	A —
	7—Tranmere R.	A —		24—Watford (L)	A —
	8—Coventry City	A —		26—Northampton (L)	H —
	10—Tranmere R.	H —		27—Northampton (L)	A —
	15—Plymouth Argyle	H —		31—Millwall (L)	H —
	22—Newcastle	A —	1939		
	29—Bradford	H —	Jan.	7—Brighton (L)	H —
May	6—Chesterfield	A —		12—Haverfordwest (W)	H —
				14—Fulham (L)	A —
				21—Brentford (L)	H —
				26—Aberdare (W)	H —
				28—Arsenal (L)	A —
				28—Haverfordwest (W)	A —
				28—Haverfordwest (W)	H —
			Feb.	2—Milford U. (W)	H —
				4—Clapton Orient (L)	H —
				4—Ebbw Vale (W)	A —
				9—Treharris (W)	H —
Mar.	18—Charlton (L)	A —		11—Portsmouth (L)	H —
	23—Ebbw Vale (W)	H —		16—Lovells Athletic (W)	H —
	25—Chelsea (L)	H —		18—Reading (L)	A —
	25—Gwynfi (W)	A —		18—Caerphilly (W)	A —
	30—Caerphilly (W)	H —		23—Llanelli (W)	A —
April	1—Queens Park (L)	A —		25—Coventry City (L)	H —
	6—Newport County (W)	H —		25—Caerau (W)	A —
	7—Bristol City (L)	A —	Mar.	2—Troedyrhiw (W)	H —
	8—Southend (L)	H —		4—Southampton (L)	A —
	10—Llanelli (W)	A —		8—Barry (W)	A —
	13—Lovells Athletic (W)	A —		11—Tottenham (L)	H —
	15—Luton (L)	A —		11—Nantymoel (W)	A —
	20—Nantymoel (W)	H —		13—Cardiff City (W)	A —
	22—Bournemouth (L)	H —		16—Tredomen (W)	H —
	27—Cardiff Corries (W)	H —			
May	6—West Ham (L)	H —			

You Cannot

ENJOY THE MATCH WITH
TIRED, ACHING FEET—
FORGET THEM BY HAVING
YOUR FOOTWEAR
PROPERLY REPAIRED
AT

Pope and Jackson's

FOOTWEAR HOSPITAL

16

Dillwyn Street SWANSEA

WHERE ALL CASES OF
FOOTWEAR TROUBLE
ARE TREATED.

Phone—5470

SMOKE

'Old Willow' Tobaccos

From **7½d.** per oz.

OBTAINABLE AT—

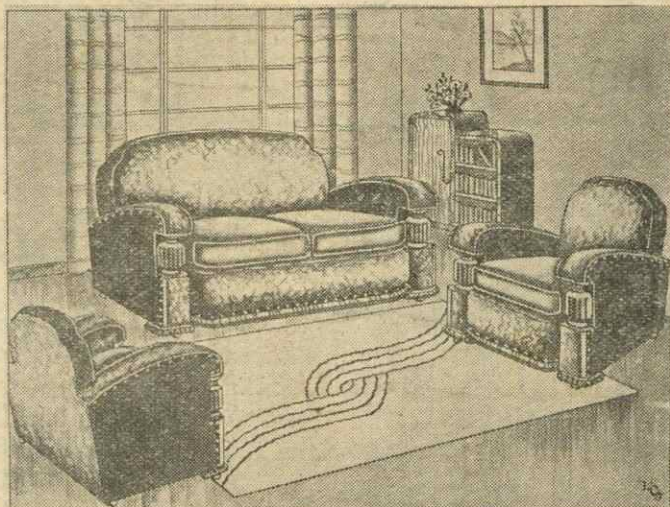
THE WEST WALES TOBACCO CO. LTD.

28 Goat Street, Swansea

54 Wind Street, Swansea

and 77 Woodfield Street, Morris on.

DOWN'S FINE FURNITURE



MODERN HIDE THREE-PIECE SUITE

This Suite represents remarkable value well made and well designed, sprung throughout, and fitted velveteen cushions

16 Gns.

OUR TERMS ARE EASY TERMS

SEND FOR FREE CATALOGUE

To Messrs. DOWN & SON, 221 High Street, Swansea
Please Send NEW FURNISHING GUIDE TO

Name

Address

Post in Unsealed Envelope with $\frac{1}{2}$ d. Stamp Affixed.

DOWN & SON, 221 HIGH ST. SWANSEA

PHONE 4433.