



# LUTON TOWN FOOTBALL AND ATHLETIC CO. LTD.

OFFICIAL  
JOURNAL

PRICE 2d



League—Division II

October 29th, 1938.

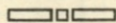
LUTON TOWN v. BLACKBURN ROVERS

## “TRUE-FORM”

THE FINEST FOOTWEAR  
IN THE TOWN



BUY DIRECT FROM THE MAKERS



LOCAL BRANCH:

## 32, GEORGE STREET

Head Office and Factories: NORTHAMPTON



Insist upon the  
Building Materials for  
your new house coming from

## POWDRILL'S

BUILDERS' MERCHANTS  
COAL and COKE MERCHANTS  
BRICK MANUFACTURERS  
SAND & GRAVEL QUARRY OWNERS

GEORGE POWDRILL & SON LTD., 1, 3 & 5, HITCHIN ROAD, LUTON  
TELEPHONE 2073 (2 Lines)

## HELEY'S CAFE

MILL STREET

NEXT TO PALACE THEATRE, LUTON

DINNERS

11.30 — 2.30

TEAS

3.30 — 6

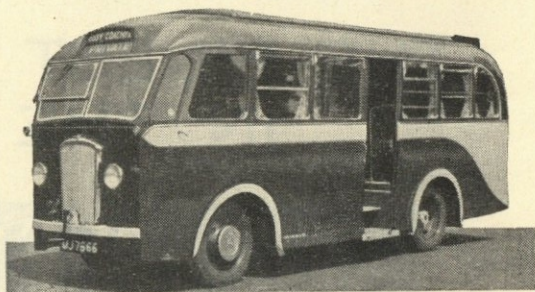
SUPPERS

6 — 12

SPECIAL  
FOOTBALL TEAS

FISH AND CHIPS  
SAUSAGE AND MASH  
— ETC. —

PROPRIETOR: A. S. HELEY



## COOPERS COSY COACHES

F. J. COOPER LTD.

20, 26 and 30 Seater  
Coaches for private hire,  
also stream lined 7 Seater  
Car for weddings and  
long distances

OXEN ROAD GARAGE

'Phone LUTON 731

## LUTON TOWN FOOTBALL AND ATHLETIC CO.



Telephone No. 3151-2.

LIMITED.

President: Alderman Harry Arnold, C.A., J.P.

Vice-President: The Right Honourable E. Leslie Burgin, M.P., P.C., D.L.I.,  
(His Majesty's Minister of Transport).

Directors:

Chairman: Alderman Chas. Jeyes, C.C.

E. Hugh Woods, Esq. (Vice-Chairman), Frank J. Andrews, Esq., Councillor Horace S. Hewson,  
Percival G. Mitchell, Esq., Henry Richardson, Esq., C.C., Philip W. Wright, Esq.

Team Manager: Mr. Neil McBain.

Secretary: Mr. A. E. Wickson.

Honorary Medical Officer: E. J. Crarer, Esq., M.B., Ch.B.

Honorary Solicitors: Messrs Machin & Co., 17-19, George Street West, Luton.

### CLUB NOTES by "Hatter"

THE changes in the forward line at Swansea last Saturday had the desired effect, and for the first time this season we credited ourselves with more than two goals in one match. In spite of this however, there were too many missed opportunities; chances that should have meant additional goals. It has been through this, and this only, that a higher position in the League table has not been obtained. By the time the interval had arrived we had a lead of two clear goals—very good too, you will say, away from home—but this should easily have been half a dozen, for the openings were made but unfortunately not taken. How this failure to take these advantages nearly proved fatal can be seen by a glance at the final score, for with a three goal lead—we scored another goal soon after the resumption—the "Swans" fought back heroically and twice reduced the arrears. I am quite aware that a victory away from home is exceedingly good going and should not lead to complaint, and up to a point I agree with this, but also think that when opportunities for further scores do present themselves and are not taken, then comment thereon is permissible. The victory however, was very refreshing and the changes made in the forward line were an improvement. Charlie Clark made a great debut and had the fortune to net two of the goals, Eddie Connelly claiming the third. The team as a whole played really well and if this form is maintained we shall have no cause to worry when May 6th happens along.

The "Stiffs" continued their series of wins at the expense of Brentford Reserves, but it was only after a stern struggle. First team requirements and injuries made team changes necessary, and perhaps this had something to do with the lesser predominance of the Reserves than we have been accustomed to witness in previous games. No fewer than four of the players were having their first taste of Combination football this season. Sam Mayberry, between the posts, fully justified

his promotion from the "A" team and showed promise of developing into a first class custodian. His fielding and kicking of the ball was excellent. At outside right some of us had our first glimpse of William Burgess, our latest acquisition from Rushden Town. This boy had a really good game for his first match in higher football, having a fine turn of speed, the ability and confidence to beat his full back, and also being able to make a cross pass. His corner kicks too, were very accurate and he nearly caught the "Bees" defence napping on one or two occasions. The inclusion of Bill Redfern in the first team gave "Hooky" Laing his opportunity and he showed good football ability. He too, had the ability and confidence to beat his man, but also has the inclination to beat too many, when a pass to a colleague would be more advantageous. He however, made one fine dribble towards the end of the game, beating four men and seeing his final shot just graze the far upright. Hugh Billington again led the forward line well and scored two fine goals, besides being distinctly unlucky on numerous occasions. The "Bees" provided stern opposition, their footwork and midfield play being delightful to watch, but they failed lamentably when near goal. It was indeed a fine struggle and the "Stiffs" are to be congratulated on their victory.

The "A" team were engaged in a Bedfordshire Invitation Cup Match at Biggleswade where they were successful by four goals to one and so advance to the semi-final. George Martin had to be pressed into service at the last moment owing to V. Coote, the Gas Works full back, falling out late on Friday evening, and had the honour of scoring the first goal. Jack Ball equalised the scores, but in the second half, Duggan twice and Hogg increased our lead and we ran out comfortable winners.

Today we renew acquaintances with Blackburn Rovers, whom we defeated here by four goals to one last season. A similar result will suit us again today, but I think the Rovers will have something to say about that. Their team contains only five



of the players who came here last term in Barron, goal, Hough and Crook, full backs, Pryde, centre half, and Butt, inside right. On that occasion they were represented as follows: Barron; Hough, Crook; Dickie, Pryde, Wightman; Bruton, Butt, Mortimer, Smeaton, Guest.

The "Stiffs" attack their stiffest hurdle this afternoon, being engaged against the Arsenal Reserves at Highbury. The "Gunners" are again at the head of the Combination table having an equal number of points as ourselves, but with a superior goal average and a match in hand. If we can lower their colours it will indeed be a grand performance and I must confess I shall be greatly interested in the result of this game.

The "A" team, too, have an attractive fixture at Bedford, where a friendly game is being played against the "All Blacks," a Cardiff club. This team, as its name implies, consists of coloured men of different nationalities, Africans, West Indians, Egyptians, Somalis and Arabs being amongst their number.

Just a reminder, will everyone please note that the **Kick-Off next Saturday, against Clapton Orient Reserves, is at 2.45 p.m.**

**ALBUMS**

At the request of a number of supporters we have had prepared an Album to contain the Art Plates of our Football Personalities, which we present with this programme at League II matches.

Will any supporters who desire one of these Albums please place their orders at the office, 70-72, Kenilworth Road, Luton. Price 1/6 each.

The celebrated Rovers from Blackburn Are here to cause us a little concern, But we think they'll admit defeat Because they'll have to meet, "Steve," Connelly, Vinall, Clark and Redfern.

Redfern, the Irish forward from Wales, Is a player well up the scales That he's been sought, With offers to be bought, Is not telling out of school tales.

**DO NOT MISS OBTAINING A COPY OF THE PROGRAMME ON SATURDAY, NOVEMBER 12th. It will contain a full sized autographed Art Plate of Jock Finlayson.**

**Next Match, Saturday, November 5th, 1938.**

LONDON COMBINATION

**LUTON TOWN RES. v. CLAPTON ORIENT RES.**

Kick-Off 2.45 p.m.

ADMISSION—Centre Stand 1/6

Stand and Enclosure 1/- Ladies and Boys 6d. : Ground 6d. Boys 3d.

(ALL PRICES INCLUDE ENTERTAINMENT TAX)

Previous issues—August 31st, J. Nelson; September 3rd, H. W. Dolman; September 24th, G. Stephenson; October 8th, Tom Smith; October 15th, Joe Coen. Any supporter desirous of purchasing a copy should make application at the office, 70-72, Kenilworth Road, Luton. Price 2d.

**PURCHASE A PROGRAMME AND HELP THE FOOTBALL CLUB.**

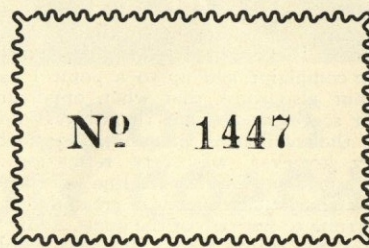
**"A" TEAM FIXTURES**

**UNITED COUNTIES LEAGUE**

Season 1938-9

Matches will be played at Ford End Road, Bedford.

				F. A.
Sat., Aug. 27	Wellingborough	...	...	A 3 1
Sat., Sept. 3	Stewart and Lloyds	...	...	H 0 0
Sat., " 17	Wisbech	...	...	A 2 2
Mon., " 26	Rushden	...	...	A 1 1
Sat., Oct. 8	Spalding	...	...	H 4 1
Sat., " 22	Biggleswade (Beds. Invit. Cup)	...	...	A 4 1
Sat., " 29	All Blacks (Friendly)	...	...	H
Sat., Nov. 5	Bedford	...	...	A
Sat., " 12	St. Neots	...	...	H
Sat., " 19	Biggleswade	...	...	A
Sat., Dec. 3	Wellingborough	...	...	A
Sat., " 24	Rushden	...	...	H
Mon., " 26	St. Neots	...	...	A
Sat., " 31	Stewart and Lloyds	...	...	A
Sat., Jan. 7	Biggleswade	...	...	H
Sat., " 21	Desborough	...	...	A
Sat., Feb. 4	Kettering	...	...	A
Sat., " 11	Stamford	...	...	H
Sat., " 18	Wisbech	...	...	H
Sat., Mar. 4	Bedford	...	...	H
Sat., " 18	Wellingborough	...	...	H
Sat., April 1	Kettering	...	...	H
Fri., " 7	Stamford	...	...	A
Sat., " 8	Spalding	...	...	A
Sat., " 51	Desborough	...	...	H



**ATTENDANCE BAROMETER**

	1937	1938		1937			1938						
				£	s.	d.	£	s.	d.				
Aug. 27		Aug. 27	Brighton & Hove Reserves	...	...	...	6356	144	15	3			
Aug. 28		Aug. 31	Southend United Reserves	...	...	7346	167	0	3				
Sept. 1		Sept. 3	Newcastle United	...	...	...	17689	811	11	4			
Sept. 4		Sept. 7	Aston Villa	...	...	25349	1299	14	4				
Sept. 8		Sept. 10	Norwich City	...	...	...	16547	747	0	6			
Sept. 11		Sept. 17	Manchester United	...	...	20610	994	1	2				
Sept. 18		Sept. 24	Tottenham Hotspur Reserves	...	...	...	5955	131	1	7			
Sept. 22		Oct. 1	Clapton Orient Reserves	...	...	4823	93	6	7				
Sept. 25		Oct. 5	Watford Reserves	...	...	...	7256	163	5	10			
Oct. 2		Oct. 8	Chelsea Reserves	...	...	7725	175	7	7				
Oct. 9		Oct. 15	Southend Reserves	...	...	...	5826	126	10	7			
Oct. 16		Oct. 22	Tottenham Hotspur	...	...	23788	1235	7	8				
Oct. 23		Oct. 29	Brighton and Hove Reserves	...	...	3626	69	19	2				
		Nov. 5	Sheffield United	...	...	...	17436	808	7	6			
		Nov. 12	Queens Park Rangers Reserves	...	...	6558	142	1	11				
		Nov. 19	Chelsea Reserves	...	...	...	7831	182	7	4			
		Nov. 26	Bury	...	...	17650	821	19	0				
		Dec. 3	Leicester City Reserves	...	...	...	1300	33	14	8			
		Dec. 10	Tottenham Hotspur	...	...	...	21061	1067	7	8			
		Dec. 17	Brighton and Hove Reserves	...	...	5236	107	4	10				
		Dec. 24	Bradford	...	...	...	14955	684	3	8			
		Dec. 31	Swansea Town Reserves	...	...	6592	141	16	2				
		Jan. 7	Brentford Reserves	...	...	...	6698	151	14	7			
		Jan. 14	West Ham United	...	...	17757	897	18	10				
		Jan. 21				147060	6095	17	6	128910	5052	8	6

N.B. The attendance figures for both League II and London Combination matches, include the number of Season Tickets issued. The gate receipts are the net amounts received after Entertainment Tax has been deducted.

**PLAYER'S APPEARANCES**

	League II		London Comb.		Utd. Counties League		F.A. Cup		Other Matches		Total	
	App.	Goals	App.	Goals	App.	Goals	App.	Goals	App.	Goals	App.	Goals
Billington, H. J. R.	...	...	14	14					1	1	15	15
Burgess, W. W.	...	...	1								1	
Campbell, R.	...	...	5	1	4						9	1
Carroll, J.	...	1	1						2		4	
Carte, R.	...	2	4		1				3		10	
Clark, C.	...	1	2	6	4	4	2				11	8
Coen, J. L.	...	1	1	14					1		16	
Connelly, E.	...	10	6						1		11	6
Dolman, H. W.	...	10							2		13	
Dreyer, G.	...			9	1				2		11	1
Dunsmore, T. H.	...	9							1		10	
Ferguson, C.	...	9	1	1					1		11	1
Finlayson, J.	...	11							1		12	
Gager, H. E.	...			15	3				1		16	3
Gardiner, D.	...					5			2		7	
Hogg, F.	...			7		1			3	1	11	1
Kidd, G. I.	...			6					1		7	
King, T. P.	...			9		1					10	
Laing, J. F.	...			1		5	1		1		7	1
Lewis, J.	...			15					1		16	
Loughran, J.	...	11							1		12	
Lutterloch, B. R.	...			15					2		17	
Mayberry, S.	...			1		5			1		7	
Nelson, J. H.	...	11							1		12	
Redfern, W. J.	...	2		14	11				1	2	17	13
Roberts, F.	...	11							1	1	12	1
Smith, T. S.	...	11							1		12	
Stephenson, G. H.	...	10	1	1	1				1		12	2
Stevens, R. F.	...			13	5	1			1		15	5
Strathie, J.	...			1		4	1		2		7	1
Vinall, E. J.	...	11	5						1	1	12	6
Wale, J.	...			9		3			1		13	
Amateurs and Others		1	2			21	3		6	3	29	7



**1879!**

59 years ago. Longer than most of us can remember. 6 years before the original Luton Town Football Club came into being, 13 years before the inception of the present Club. In this year the firm of Sell & Mitchell was founded, and for 59 years has built up an irreproachable reputation. Therefore in the selection of your house or the arranging of your mortgage, you cannot do better than seek the advice of this firm. Your enquiries will be dealt with in a courteous and efficient manner, and there will be no obligation incurred whatsoever.

**SELL & MITCHELL**

*Auctioneers, Land & Estate Agents*

**7 & 9, PRINCESS STREET, LUTON**

PHONE 2003/4

**95, HIGH STREET NORTH, DUNSTABLE**

PHONE 354



**A**  
Point  
to remember!  
**E. A. ALLEN**  
the Printer of this  
Programme

WILL GIVE SERVICE  
AND SATISFACTION  
424, DUNSTABLE ROAD  
LUTON  
Telephone 1626

**To-Day's Half-Time Scores**

**FIRST LIST**

A	BIRMINGHAM	v.	ASTON VILLA	.....
B	BOLTON WAN.	v.	ARSENAL	.....
C	CHARLTON A.	v.	BRENTFORD	.....
D	CHELSEA	v.	DERBY CO'NTY	.....
E	LEEDS UNITED	v.	PORTSMOUTH	.....
F	LEICESTER C.	v.	EVERTON	.....
G	LIVERPOOL	v.	HUDDERSFIELD	.....
H	MANCH. UN.	v.	SUNDERLAND	.....
K	MIDDLESBRO'	v.	WOLVES	.....
L	PRESTON N. E.	v.	BLACKPOOL	.....
M	STOKE CITY	v.	GRIMSBY T.	.....
N	BURNLEY	v.	BURY	.....

NOTE—The Letter in the Programme corresponds with the letter on the Board—thus A 0-1 means that the first-named Club has scored 0 and their opponents 1.



**Specialities**  
Paint and Enamel  
Manufacturers  
"Stuart" Series  
Wallpapers

**OGDEN & CLEAVER**

Stuart Street, LUTON

TELEPHONE 580

**LUTON GAS COMPANY**

JUST A TURN OF THE TAP  
AND GAS GIVES INSTANT  
HOT WATER, REAL FIRE-  
SIDE COMFORT, CAREFREE  
COOKING

*Be up-to-date with Gas*

Showrooms—GEORGE STREET  
and DUNSTABLE ROAD

**THE BEST DEFENCE**

*against*

**WINTER'S ATTACK**

**'OXAVIN'  
TONIC WINE**

Large Bottle 4/6  
Medium Bottle 2/6

**L. GREENER, Wine Merchant**

60, WELLINGTON STREET, LUTON  
(Corner of Stuart Street)

**H. R. WILLIAMS**

REGISTERED  
ELECTRICAL CONTRACTOR  
*and Member of the  
Electrical Contractors' Association*

17, DURHAM ROAD  
LUTON

PHONE: LUTON 2012

**NEWBERY**

& CO. (LUTON) LIMITED

32/36, CROMWELL ROAD  
LUTON

*Builders' Merchants  
Ironmongers*

*Door and Gate Importers*

PHONE 294  
PRIVATE 511

PHONE 223 EST. 1860

**WHITE'S**

*again supply*

LUTON TOWN  
FOOTBALL CLUB  
WITH THEIR  
FOOTBALL  
BOOTS

*THEY know the Best*

**H. WHITE** (LUTON LTD.)

FOOTWEAR  
*of every description*  
MANCHESTER STREET  
LUTON

**To-Day's Half-Time Scores**

**SECOND LIST**

A	COVENTRY C.	v.	CHESTERFIELD	.....
B	NEWCASTLE	v.	BRADFORD	.....
C	NORWICH C.	v.	MILLWALL A.	.....
D	NOTTS. FOR.	v.	SWANSEA T.	.....
E	SHEFFIELD UN.	v.	WEDNESDAY	.....
F	SOUTHAMPTON	v.	TRANMERE R.	.....
G	TOTTENHAM	v.	WEST HAM U.	.....
H	WEST BROM.	v.	MANCH. CITY	.....
K	BRIGHTON & H.	v.	NORTHAMPT'N	.....
L	BRISTOL ROV.	v.	NEWPORT CO'	.....
M	IPSWICH T.	v.	TORQUAY U.	.....
N	QUEEN'S P. R.	v.	CRYSTAL PAL.	.....

**S. J. HAWKINS**  
STATION WORKS. FLITWICK BEDS.

PHONE: FLITWICK 253

**PNEUMATIC TYRED  
TRUCKS, TROLLEYS AND  
BARROWS**  
*for all trades*

WHOLESALE AND RETAIL

Send for List L101 Post Free

**CYCLES & REPAIRS**

*Get your new machine from*

**S. A. LEWIS**

138, DUNSTABLE ROAD  
LUTON

PHONE 807

Terms from  
**2/-**  
Weekly

*All kinds of  
repairs executed  
by experienced  
workmen*



don't get wet!  
**GET A MAC**

(OR A RAINCOAT)

from

**MARES!**

Many famous makes in stock

Charles **MARES** Limited



GEORGE STREET, LUTON  
And at St. Albans

TODAY

**PALACE THEATRE**

LUTON

**MERLE OBERON**  
and **LAURENCE OLIVIER**

— IN —

**"The Divorce of Lady X"**

NEXT WEEK

NEXT WEEK

**WILL HAY** in **"CONVICT 99"**

(A)

TODAY

**stick to beer**

BY **ALL MEANS**

**J.W. GREEN'S**

J. W. GREEN LIMITED, The Brewery, LUTON

Telephone - Luton 3131

**L-M-S RAILWAY**

CHEAP TRIPS *from* LUTON  
To **LONDON 2/6**

Weekdays—Any train after 12 noon

Sundays—Any train

Depart **Sunday, 6th November** Return Fares

9.49 a.m. **LEICESTER** . . . 4/9  
**NUNEATON** . . . 4/9  
**BIRMINGHAM** . . . 5/3  
**SMETHWICK** . . . 5/6  
**DUDLEY PORT** . . . 5/9  
**WOLVERHAMPTON** 5/9

Football, Rugby,  
Hockey, Badminton,  
Table Tennis,  
Miniature Billiard  
Tables, Dominoes  
and all Indoor Games  
DART BOARDS and  
DARTS a Speciality  
Roller Skates and Boots  
in Great Variety

**BROCKS  
FIREWORKS**

**G. A. WILD  
AND SONS**

Sports Outfitters

14, Manchester Street, Luton  
103, High Street N., Dunstable

BOOK AT  
**BAILEY'S**

FOR

LONDON COASTAL COACHES  
ALL INDEPENDENT SERVICES

JERSEY AIRWAYS  
LONDON THEATRES  
AND  
AMUSEMENTS

Daily Services to all  
parts of Great Britain

TOBACCONIST  
AND BOOKING AGENT

38, NEW BEDFORD ROAD  
**LUTON**

Phone 1972

**LUTON TOWN**

Shirts White  
Knickers Black  
Stockings Black with White Tops

1 **Coen** Goal  
2 **Smith** Right Back  
3 **Finlayson** Right Half  
4 **Clark** Outside Right  
5 **Redfern** Inside Right  
6 **T. SMITH** (Atherstone) Referee

7 **Langton** Outside Left  
8 **Clarke** Inside Left  
9 **Chivers** Left Half  
10 **Crook** Left Back

**BLACKBURN ROVERS**

Shirts Blue and White Quarters  
Knickers White  
Stockings Blue with White Ringed Tops

1 **Coen** Goal

2 **Dunsmore** Left Back

3 **Nelson** Centre Half

4 **Loughran** Left Half

5 **Vinall** Centre

6 **Connolly** Inside Left

7 **Stephenson** Outside Left



Linesmen—

Blue Flag: A. SEWELL (Coventry)  
Red Flag: T. H. PRESTIDGE (Kettering)

8 **Weddle** Centre

9 **Butt** Inside Right

10 **Rogers** Outside Right

11 **Pryde** Centre Half

12 **Whiteside** Right Half

13 **Hough** Right Back

14 **Barron** Goal

League—Division II

Kick-Off 3 p.m.

MODERN FIREPLACES HEATING APPLIANCES

Up-to-date Sanitary Fittings  
in White and Colours

For ARTISTIC WALLPAPERS

**CHARLES BIRD & SONS LTD.**  
**COLLINGTON STREET LUTON**

Telephone: Luton 1255/1256

For QUALITY PAINTS

"Triplex" Safety Glass  
Motor Screens (Fitted)

MIRRORS—SPLASH BACKS—GLASS  
SHELVES & GLASS FIRE SCREENS

**HARRY CANHAM**

Cardboard Box

Packing Case, Ply Box and

Crate Manufacturer

9a, MARKET HILL, LUTON

TELEPHONE 458

**WAKE UP YOUR LIVER BILE**

*without Calomel—and you'll jump out of bed in  
the morning full of vim and vigour*

YOUR LIVER should pour out two pints of liquid bile into your system daily. If this bile is not flowing freely, your food doesn't digest. It just decays inside you. Gas bloats up your stomach. You get constipated. Your whole system is poisoned and you feel sour, sunk, and the world looks punk.

Laxatives help a little, but a mere bowel movement doesn't

get at the cause. It takes those good old Carters Brand Little Liver Pills to get these two pints of bile flowing freely and make you feel "up and up." Harmless, gentle, yet amazing in making bile flow freely. Ask for Carters Brand Little Liver Pills.

Stubbornly refuse anything else. 1/3 and 3/- at all chemists.

NOW ALSO IN  
**PENNYWORTHS**  
EVERYWHERE

You are definitely  
**"OUT-OF-PLAY"**  
if you are not buying  
**YOUR OWN HOUSE**

Write for easy and convenient terms to  
**LUTON & MIDLANDS BUILDING SOCIETY**

Telephone: Luton 1067

11, George St.  
West  
LUTON

**WEBDALE'S**  
of WELLINGTON STREET

— FOR —

KITCHEN EQUIPMENT

AND ALL

HOUSEHOLD REQUIREMENTS

AT LOWEST PRICES

21 to 27, WELLINGTON STREET  
'Phone 41 LUTON



**Charnley**  
and Sons  
REGISTERED  
OPTICIANS

NATIONAL HEALTH  
INSURANCE

On the Official List of  
H.S.A. OPTICIANS

11, Wellington Street  
LUTON  
Telephone 1808

Over 50 years in the  
Printing Trade  
in Luton  
○○○○

**W. F. BUNKER**  
WILL HELP YOU IN  
THE PRODUCTION  
OF YOUR PRINTING  
REQUIREMENTS  
26a, CHAPEL STREET  
LUTON  
PHONE 224

**E. A. GREEN**  
BOOKSELLER  
NEWSAGENT  
STATIONER

Luton's Most Progressive  
Circulating Library

21a, New Bedford Road  
and 228, Biscot Road  
LUTON  
Telephone 476

**F. WHITE**  
BUILDER  
and  
CONTRACTOR  
141,  
Stockingstone Road  
LUTON  
—□—  
ALL CLASSES OF  
REPAIRS, PAINTING  
AND DECORATING  
UNDERTAKEN  
Estimates Free

**To-Day's Half-Time Scores**

**THIRD LIST**

A	SOUTHEND U.	v.	WATFORD	.....
B	WALSALL	v.	ALDERSHOT	.....
C	ACCRINGTON	v.	CARLISLE UN.	.....
D	BARNSELY	v.	CREWE ALEX.	.....
E	BRADF'D CITY	v.	WREXHAM	.....
F	STOCKPORT C.	v.	DARLINGTON	.....
		3.15 KICK-OFFS		
G	PLYMOUTH	v.	FULHAM	.....
H	BOURNEM'UTH	v.	NOTTS. CO'TY	.....
K	CARDIFF C.	v.	SWINDON T.	.....
L	EXETER CITY	v.	PORT VALE	.....
M	MANSFIELD T.	v.	BRISTOL CITY	.....
N	READING	v.	CLAPTON O'	.....

**W. CHAMBERLAIN & Co.**  
Proprietors—  
A. M. Chamberlain  
R. Deadman  
106, Dunstable Road  
LUTON  
Best British Made  
Brushes and Brooms  
Enamel Ware  
City of London  
White Lead Paint  
Messrs Merrediths & Co.  
Merlac Enamel Paints  
Fadeless Wall Paper  
Ask for Pattern Books  
—□—  
A TRIAL SOLICITED

**W. HOLES**  
3, Gordon Street, Luton  
Coal and  
Coke Merchant

Authorized Agent for  
Luton Gas Company's  
large and graded coke

Agent for  
L.M.S. Passenger Dept.

Telephone 210

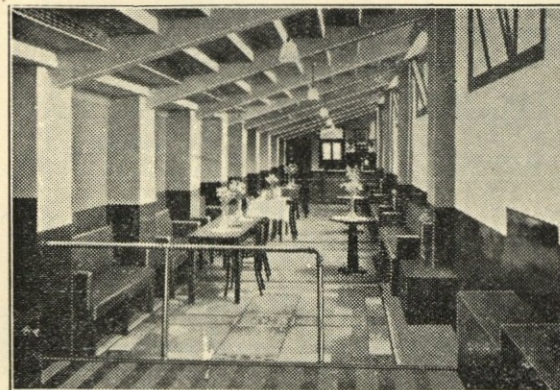


TELEPHONE:  
LUTON 2126

**P. W. SMITH**

Builder — Contractor  
High Class Decorator

418, DUNSTABLE ROAD  
LUTON



**LUTON BOBBERS STAND CLUB**

President: P. W. Wright, Esq.  
Vice-Chairman: E. G. Gibbs, Esq.  
Hon. Secretary: Mr. A. C. Wright  
Hon. Treasurer: Mr. J. Collier

Committee:

Messrs W. Banks, F. Cooper, A. Flitton,  
N. Lines, S. Setchell, R. G. Smith

TELEPHONE 2566

The Mystery Nights held on Thursday evenings during the past fortnight for Members of the Bobbers Stand Club, have been so successful that it has been decided to continue them for a few more weeks. **Now football supporters who are not Members of the Bobbers Stand Club here is your chance to join up in order to be able to participate in these functions.**

The Skittles team had a very interesting game on Tuesday last, when the Tudor "A" team visited the club, and after a very exciting game the match ended in a draw, 42 all. **Next week's opponents**

are the Social "A" Club, and a further interesting game is expected.

The tournaments for the various games for the Members have now started, and some interesting matches have been staged.

**Another delivery of the attractive Bobbers Stand Badge has arrived, and can be obtained at the club. We now have a very attractive club, everything up-to-date, and we should be glad for football supporters to rally round and support us, membership fee only 1/2 per year.**

**RALLY ROUND AND SUPPORT THE BOBBERS STAND CLUB**

**THE CENTRAL RESTAURANT**

20/22/24, CHEAPSIDE  
LUTON

○○○

SEATING FOR 300 ESTABLISHED 60 YEARS

Phone 172 and book a table  
and have your meal in comfort

WE CAN CATER FOR YOU  
ANYWHERE  
ANY TIME  
ANY NUMBER

**A. E. NICHOLLS**  
Wholesale  
CONFECTIONER & TOBACCONIST

CAN SUPPLY YOU WITH  
EVERYTHING YOU WANT  
FOR THE TOBACCO AND  
CONFECTIONERY TRADE  
AT LOWEST PRICES



Prompt Delivery and Civility

16, MILL STREET, LUTON

'Phone: Luton 902







FIXTURES, 1938 - 9

FIRST XI	Division II	F. A.
Sat., Aug. 27	West Bromwich Albion	... A 0 3
Wed., " 31	Newcastle United	4 1 H 2 1
Sat., Sept. 3	Norwich City	... 1 1 H 2 1
Mon., " 5	Coventry City	... 1 2 A 0 1
Sat., " 10	Manchester City	... 4 2 A 2 1
Sat., " 17	Plymouth Argyle	... 4 2 A 1 4
Sat., " 24	Sheffield United	... 2 3 H 2 0
Sat., Oct. 1	Burnley	... 2 3 A 2 3
Sat., " 8	Tottenham Hotspur	... 2 4 H 0 2
Sat., " 15	Bradford	... 4 2 H 2 0
Sat., " 22	Swansea Town	... 1 1 A 3 2
Sat., " 29	Blackburn Rovers	... 4 1 H
Sat., Nov. 5	Tranmere Rovers	... A
Sat., " 12	West Ham United	... 2 2 H
Sat., " 19	Bury	... 4 3 A
Sat., " 26	Sheffield Wednesday	... 2 2 H
Sat., Dec. 3	Fulham	... 1 4 A
Sat., " 10	Chesterfield	... 1 1 H
Sat., " 17	Millwall	... A
Sat., " 24	West Bromwich Albion	... H
Mon., " 26	Nottingham Forest	... 0 1 A
Tues., " 27	Nottingham Forest	... 2 2 H
Sat., " 31	Norwich City	... 4 0 A
Sat., Jan. 7	Manchester City	... H
Sat., " 14	Plymouth Argyle	... 1 1 H
Sat., " 21	Sheffield United	... 0 2 A
Sat., " 28	Sheffield United	... 0 2 A
Sat., Feb. 4	Burnley	... 3 1 H
Sat., " 11	Tottenham Hotspur	... 0 3 A
Sat., " 18	Bradford	... 1 1 A
Sat., " 25	Swansea Town	... 5 1 H
Sat., Mar. 4	Blackburn Rovers	... 2 2 A
Sat., " 11	Tranmere Rovers	... H
Sat., " 18	West Ham United	... 0 0 A
Sat., " 25	Bury	... 0 1 H
Sat., April 1	Sheffield Wednesday	... 0 4 A
Fri., " 7	Southampton	... 1 3 H
Sat., " 8	Fulham	... 4 0 H
Mon., " 10	Southampton	... 6 3 A
Sat., " 15	Chesterfield	... 2 5 A
Sat., " 22	Millwall	... H
Sat., " 29	Newcastle United	... 3 1 A
Sat., May 6	Coventry City	... 1 4 H

RESERVE FIXTURES London Combination F. A.

Sat., Aug. 27	Brighton & Hove A.	6 2 H 2 1
Mon., " 29	Millwall	0 3 A 5 1
Sat., Sept. 3	Bournemouth	1 1 A 3 1
Wed., " 7	Tottenham Hotspur	0 2 H 1 1
Sat., " 10	Watford	2 0 H 1 2
Sat., " 17	Southend United	3 1 H 4 0
Mon., " 19	Tottenham Hotspur	3 5 A 2 2
Sat., " 24	Queens Park Rangers	0 4 A 0 1
Wed., " 28	Southampton	2 0 A 2 2
Sat., Oct. 1	Chelsea	0 1 H 2 1
Wed., " 5	Leicester City	0 1 H 6 1
Sat., " 8	Charlton Athletic	0 4 A 3 0
Mon., " 10	Leicester City	1 4 A 5 2
Sat., " 15	Fulham	1 5 A 1 3
Sat., " 22	Brentford	0 0 H 3 2
Sat., " 29	Arsenal	0 1 A
Sat., Nov. 5	Clapton Orient	3 0 H
Sat., " 12	Portsmouth	0 0 A
Sat., " 19	West Ham	0 1 H
Sat., " 26	Northampton Town	1 1 A
Sat., Dec. 3	Bristol City	3 1 H
Sat., " 10	Swansea Town	1 0 A
Sat., " 17	Crystal Palace	6 1 H
Sat., " 24	Brighton & Hove A.	1 1 A
Mon., " 26	Southampton	2 1 H
Sat., " 31	Bournemouth	2 1 H
Sat., Jan. 7	Reading	3 1 H
Sat., " 14	Watford	2 3 A
Sat., " 21	Southend United	0 4 A
Sat., " 28	Queens Park Rangers	2 2 H
Sat., Feb. 4	Chelsea	2 6 A
Sat., " 11	Charlton Athletic	2 0 H
Sat., " 18	Fulham	3 0 H
Sat., " 25	Brentford	0 3 A
Sat., Mar. 4	Arsenal	1 2 H
Sat., " 11	Clapton Orient	7 0 A
Sat., " 18	Portsmouth	1 2 H
Sat., " 25	West Ham	1 1 A
Sat., April 1	Northampton Town	3 3 H
Fri., " 7	Coventry City	0 1 A
Sat., " 8	Bristol City	2 3 A
Mon., " 10	Coventry City	4 0 H
Sat., " 15	Swansea Town	1 1 H
Sat., " 22	Crystal Palace	3 1 A
Sat., " 29	Millwall	5 1 H
Sat., May 6	Reading	4 1 A

LEAGUE TABLES

LEAGUE DIVISION II

	Pld.	Won	Lost	Drn.	For	Agst.	P.
Fulham	12	7	2	3	21	11	17
Blackburn Rovers	12	7	4	1	28	20	15
Newcastle United	12	6	4	2	24	15	14
West Brom. A.	12	7	5	0	29	24	14
Millwall	11	5	3	3	23	12	13
Sheffield United	11	5	3	3	18	13	13
Sheffield Wednesday	11	5	3	3	24	19	13
Tottenham Hotspur	11	5	3	3	20	17	13
Bradford	11	5	3	3	20	20	13
Burnley	11	5	4	3	16	19	13
Plymouth Argyle	11	5	4	2	16	13	12
LUTON TOWN	11	5	4	2	16	18	12
West Ham United	12	4	5	3	27	20	11
Bury	11	3	4	4	14	16	10
Coventry City	11	3	4	4	11	15	10
Notts Forest	11	3	5	3	11	17	9
Chesterfield	11	4	6	1	10	16	9
Manchester City	11	3	6	2	24	29	8
Norwich City	11	4	7	0	16	21	8
Southampton	11	3	6	2	16	23	8
Tranmere Rovers	11	3	7	1	13	23	7
Swansea Town	11	0	5	6	12	28	6

LONDON COMBINATION

	Pld.	Won	Lost	Drn.	For	Agst.	P.
Arsenal	14	10	3	1	48	21	21
Chelsea	14	10	3	1	33	16	21
LUTON TOWN	15	9	3	3	40	20	21
Watford	15	8	4	3	28	26	19
Queens Park Rangers	13	8	4	2	32	13	17
Portsmouth	14	7	4	3	37	27	17
Coventry City	12	8	4	0	40	15	16
West Ham United	13	7	4	2	30	26	16
Tottenham Hotspur	14	6	5	3	30	20	15
Crystal Palace	13	5	4	4	34	24	14
Brentford	14	5	5	4	33	28	14
Southend United	11	6	3	2	20	16	14
Brighton & Hove A.	13	6	5	2	23	24	14
Bournemouth	15	4	5	6	24	29	14
Leicester City	16	6	8	2	32	44	14
Fulham	14	5	6	3	20	21	13
Charlton Athletic	15	5	7	3	23	25	13
Swansea Town	15	5	7	3	15	27	13
Millwall	14	4	7	3	18	33	11
Bristol City	15	5	10	0	23	39	10
Southampton	14	3	9	2	23	38	8
Reading	13	2	8	3	24	50	7
Northampton	13	3	10	0	12	30	6
Clapton O.	15	2	11	2	14	44	6

# Edward Martell & Co., Ltd.

TELEPHONE

896-7

Coal and Coke Merchants

ESTABLISHED

1879

24, UPPER GEORGE STREET, LUTON

## Burn "Hucknall" Ashless Coal It Scores Every Time!!

Popular Price! Saves Labour!! Great Heat!!!

WHY NOT TRY IT?

### CARRY ON LUTON TOWN!

a packet of

SWEET

## ROSEMARY

TOBACCO

is always enjoyable

### W. & F. FAULKNER LONDON

BRANCH OF THE IMPERIAL TOBACCO CO.  
(OF GREAT BRITAIN AND IRELAND), LIMITED

SEE that you "SEE"  
all of the game  
comfortably,

if you cannot do so

CALL AND SEE

## A. G. PRATT

M.P.S., F.S.M.C.

CHEMIST AND OPTICIAN

169, DUNSTABLE ROAD, LUTON  
(Corner Kenilworth Road)

Recognised by the O.B.A.C. for  
National Health Insurance Benefit

'PHONE 708



# FIREWORKS

Spectacular Displays, fireworks of all sizes  
—Roman candles, revolving fountains, etc.,  
and all the old favourites and latest  
novelty fireworks. Here is the finest  
selection in the town. Everything you  
will need at the right prices. Crackers,  
Magic Fountains, Empire Guns, Salvoes,  
Sparklers, Bombshells, Windmills, Flying  
Fleas, Black Jacks, Parachutes, Auto-  
Gyros, Belisha Beacons, Royal Salutes,  
Rockets, etc., etc.

$\frac{1}{2}$ d., 1d., 2d., 4d., 6d. to 2/6 each  
Boxes 1/-, 2/6, 5/-, 7/6, 10/- to 21/-

— ASK FOR ILLUSTRATED LIST —

*Large Displays Specially Quoted For*

**H. G. PARTRIDGE**

**& CO.**

**10-12 CHAPEL STREET, LUTON**

'PHONE 234