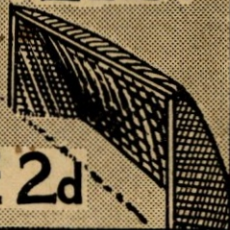


LUTON TOWN FOOTBALL AND ATHLETIC CO. LTD.

OFFICIAL
JOURNAL



PRICE 2d



FOOTBALL LEAGUE—DIVISION 2.

SATURDAY, MAY 24th, 1947.

LUTON TOWN v. BRADFORD

“TRUE-FORM”

The Finest Footwear in the Town



BUY DIRECT FROM THE MAKERS



LOCAL BRANCH:

32, GEORGE STREET

Head Office and Factories: NORTHAMPTON

IMPORTED
SOFTWOODS

HOME GROWN
HARDWOODS

Up the Lilywhites
for Goals

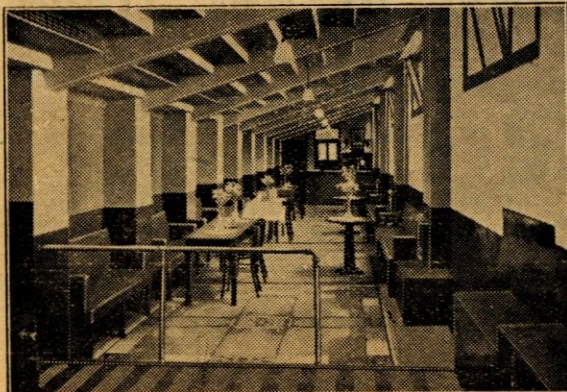
TELEPHONE:
LUTON 1964

LEAGRAVE RD. SAWMILLS
LUTON
BEDS.

Down to Lillywhites
for Timber

LUTON BOBBERS STAND CLUB Telephone 2566

Registered Office—Beech Hill Path



President: P. W. Wright, Esq.
Vice-Chairman: E. G. Gibbs, Esq.
Hon. Treasurer: Mr. J. Collier
Hon. Secretary: Mr. W. C. Brown

BOBBERS NOTES

We have heard from several of our members that went to the Cup Final that better football had been seen on our own ground, but we are pleased all of you enjoyed your visit to the Stadium. The football season is drawing to a close but the doors of the "Bobbers Stand Club" will still be open although you cannot pay us a

visit unless you are a member, so join today. "Wishful Thinking," as a hobby, has many advantages. It costs nothing, requires no equipment and can be played in your own time, on any pitch, indoors or open air. It can take just what direction the thinker chooses. Some wish for romance, less romantic thinkers just wish they may be lucky in the Penny Pools. The Bobbers favourite game of "Wishful Thinking" consists of hoping to see a cover over Kenilworth Road Terraces. You assisted us with our collection at the Coventry match to the amount of £10/10/1, which makes the Building Fund to date £1,545/7/8. We set a target of £2,000, but have only one more collection after today, when Newport will be our visitors, so unless we get a good number of you to become Life Members, or Yearly ones, and two bumping collections, we shall not reach this amount. The close season is short, but we shall be working hard inside the Club just the same and through not being a member one cannot say what you may miss. The 12 collections made this season realised £134/12/7 for which we thank you. Our Ladies' Dart Team entertained the Footballers at the Club last week, the result of games played were as follows—

	Ladies	Footballers
Darts (501)	7	5
Dominoes	15	8
Skittles	3	2

Highest scores at darts, Mrs. Freeman 133, Mrs. Burton 121, Mrs. Ellis 117.

CLUB NOTES

It seems more than three weeks ago since we last saw our first team at Kenilworth Road but today and next Saturday we have a chance of seeing our lads again in action before they hang their boots up until next season. This season started with very high hopes which were maintained right through until that very bad spell of weather since when our lads do not seem to have been able to get back that bite in front of goal to finish off their good approach work. It is rather a poor record we have to show since April 4th, only gathering 4 points from 8 games, scoring 6 goals against 17, but up to that point we could feel a certain satisfaction at our position, especially when remembering how very badly hit we have been by injuries right from the commencement of the Season. All the games we have lost by the odd goal could easily have gone in our favour if only Dame Fortune had smiled on us at times. We are not blaming bad luck for our dropping of points but just that little bit of luck at times in the run of the ball, without which no team can be really successful, would have made a big difference to the result of quite a few games. However we have seen some good football at Kenilworth Road this Season and there is every reason for hoping it will be produced again next Season, for we are retaining practically all the players on our books and are hoping during this close season to add to the playing staff.

Our Reserves unfortunately have not come up to expectations this season. On paper, at the beginning of the campaign, we thought we had two quite good teams to put into the field each week but injuries upset our plans to a large extent but what was a big disappointment to us was the form of the lads on their demob from the Services. They have all tried their hardest to make good but nearly all of them have been abroad and it has made a big difference to their stamina. However we hope to see a return to their proper form next Season and are showing our confidence in them by offering them terms.

Today we entertain the Bradford Park Avenue Club and accordingly extend to them a very hearty welcome to our town.

Of the eighteen matches Bradford have played away from home six have been won, five drawn and seven lost, a much better record than ours. We feel confident however that our boys will obtain maximum points from our last two games and so break the long spell of disappointing results.

Our Colts team wind up their fixtures with a match against Cambridge Town in the South Midlands League on Whit-Monday, kick-off 3.15 p.m. On Wednesday, May 28th, we receive Leicester City Reserves in the last of our Combination Cup fixtures; this will be an evening kick-off 6.30 p.m. And then next Saturday we play Newport County in a League II game which as far as we know at present will be the last game of the Season. Kick-off will be at 3.15 p.m.

Will any supporters who have accommodation for players, either single or double, please write to the Secretary giving full particulars. Lodgings are required for some players upon their return for training on the first Tuesday in August.

Season Ticket Holders are reminded that their present seats will be retained for them for Season 1947/48 until 30th June, after which date seats not taken up will be made available to the public. The season tickets will be printed as soon as the fixtures are known. Prices of tickets are the same as for last season.

As you all know by now our Team Manager, Mr. George Martin, has been the successful applicant for the position as Manager at Newcastle, and will therefore be leaving Luton very soon to take up his new appointment. This job is looked upon as one of the "plums" of the football world and although we are very sorry to see him go it is with the very best wishes of all who are connected with the Club and of its many supporters that he will take his leave, trusting he will be as successful at St James' Park as he has been at Kenilworth Road. More faithful service he cannot give than he has given Luton during the fourteen years he has been with us, but of course George is the type who will give of his best all the time, wherever he is, as Newcastle will find to their advantage.

MARES for MEN'S WEAR

CHARLES MARES Ltd.
65-67, GEORGE STREET, LUTON

You, too, will prefer J.W. GREEN'S

IT'S LUTON'S BREW — PRIZE WINNER, TOO!

J. W. GREEN LTD., THE BREWERY, LUTON.

TELEPHONE: LUTON 3131.

TELEPHONE 223
ESTABLISHED 1860

H. WHITE (LUTON) LTD.

The Families' Shoe Store

24/30, MANCHESTER ST. LUTON

'Phone: LUTON 1961
Proprietor: R. HARRIS

'Rons' Gentlemen's Hairdresser

6, MILL STREET LUTON BEDS.

Saloon Service Ground Floor
Appointments First Floor

LUTON TOWN Football League—Division 2

Shirts White
Knickers Black
Stockings Black with White Tops

B. Stretton Goal

2 **Gager** Right Back

3 **Lake** Left Back

4 **Soo** Right Half

5 **Brice** Centre Half

6 **Gardiner** Left Half

7 **Waugh** Outside Right

8 **Connelly** Inside Right

9 **Billington** Centre

10 **Driver** Inside Left

11 **Duncan** Outside Left

Referee—**W. F. DALY** (Orpington, Kent)

11 **Dix** Outside Left

10 **Wilkins** Inside Left

9 **Gibbons** Centre

8 **H. J. McIlvenny** Inside Right

7 **Elliott** Outside Right

6 **Layton** Left Half

5 **Greenwood** Centre Half

4 **White** Right Half

3 **Farrell** Left Back

2 **Stephen** Right Back

BRADFORD Goal

Shirts Red, Amber and Black Hoops
Knickers White
Stockings Black, Red and Amber

Nicholls Goal

Blue Gillette Blade
MADE IN ENGLAND

Red Flag: W. J. MULLER (London)
Blue Flag: W. F. DELLOW (Croydon)

Kick-Off 3 p.m.

MODERN FIREPLACES HEATING APPLIANCES

Up-to-date Sanitary Fittings in White and Colours

For ARTISTIC WALLPAPERS

CHARLES BIRD & SONS LTD.

Glazing Contractors
COLLINGTON ST., LUTON

Telephone: Luton 1255-1256

For QUALITY PAINTS

"Triplex" Safety Glass
Motor Screens (Fitted)

Makers of MIRRORS, SPLASH BACKS, GLASS SHELVES and GLASS FIRE SCREENS

HARRY CANHAM & SON

Export Packers
Export Leatherboard Post Boxes
Cardboard Box, Packing Case
Ply Box & Crate Manufacturers

GROVE ROAD, LUTON
TELEPHONE 458

W. CHAMBERLAIN & Co.

Telephone: LUTON 329
106, DUNSTABLE ROAD, LUTON

IRONMONGERY & GARDEN REQUISITES
BRUSHES & BROOMS for Home and Factory
PAINTS & DISTEMPERS
OILS, WALLPAPER Etc. as available

YOUR KIND ENQUIRIES INVITED

YOUR WINNING GOAL

FOR BEST QUALITY

RADIO, TELEVISION & ALL ELECTRICAL SUPPLIES IS A. T. SNOWDEN'S

171, DUNSTABLE ROAD AND 24, MILL STREET, LUTON

'PHONE: LUTON 1496

AGENTS for BUSH COSSOR FERRANTI H. M. V. PHILIPS PHILCO PILOT ULTRA

RELIABLE RADIO TELEVISION ELECTRICAL REFRIGERATION INSTALLATIONS AND REPAIRS CARRIED OUT BY EXPERTS

HELEY'S RESTAURANT

MILL STREET
Next to Palace Cinema

★ After the Match call for a Special

FISH AND CHIP TEA

PROPRIETOR :: :: E. A. HELEY

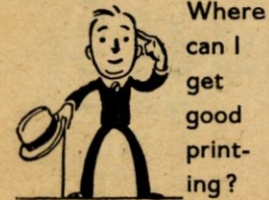
H. R. WILLIAMS

Registered ELECTRICAL CONTRACTOR

and Member of the Electrical Contractors' Association

17 DURHAM ROAD LUTON

Telephone: Luton 2012



E. A. ALLEN & SON (Luton) LTD.

for PRINTING of QUALITY

424 DUNSTABLE ROAD 'Phone LUTON 1626

E. A. GREEN

The noted shops for BOOKS

of all kinds STATIONERY FOUNTAIN PENS TOYS and FANCY GOODS

25, NEW BEDFORD RD & 228, BISCOT ROAD LUTON

PHONE 476

TODAY'S HALF-TIME SCORES

NOTE. The letter in the Programme corresponds with the letter on the Board—thus A 0-1 means that the first-named club has scored 0 and their opponents 1.

FIRST LIST

Table of football matches with scores for the first list, including Arsenal v. Liverpool, Everton v. Charlton A., etc.

SECOND LIST

Table of football matches with scores for the second list, including Northampton v. Aldershot, Norwich v. Ipswich T., etc.

THIRD LIST

Table of football matches with scores for the third list, including Lincoln v. Wrexham, N. Brighton v. Darlington, etc.

TIMBER

LILLYWHITE'S ?

PHONE

1964

LEAGRAVE ROAD

Motorists!

Fit

TRIPLEX SAFETY GLASS

Consult

OGDEN & CLEAVER LTD.

(GLASS DEPT.)

Stuart St., Luton

'PHONE 580

Car Hire Service

IF YOUR TEAM LETS YOU DOWN

"We Won't"

P. COOK & Co. 15, Shirley Rd. LUTON

'Phone No. 4292

FIXTURES, 1946-47

Main fixture list for Division II, including Sheffield Wednesday, Bradford, Fulham, Millwall, Bury, etc.

RESERVE FIXTURES Football Combination F. A. including Northampton Town, Arsenal, Norwich City, etc.

LEAGUE TABLES

LEAGUE DIVISION II and COMBINATION CUP tables showing points, goals, and matches.

NEXT MATCHES

Monday, May 26th, 1947

SOUTH MIDLANDS LEAGUE-DIVISION I

LUTON TOWN COLTS

v.

CAMBRIDGE TOWN

Kick-off 3.15 p.m.

COMBINATION CUP

Wednesday, May 28th, 1947

LUTON TOWN RESERVES

v.

LEICESTER CITY RESERVES

Kick-off 6.30 p.m.

Saturday, May 31st, 1947

FOOTBALL LEAGUE-DIVISION II

LUTON TOWN

v.

NEWPORT COUNTY

Kick-off 3.15 p.m.

Usual Prices of Admission

G. A. WILD & SONS

THE
TOWN'S LEADING SPORTS OUTFITTERS
and Fancy Leather Goods Dealers and Saddlers

14, MANCHESTER STREET, LUTON

Also at

'Phone No. 780

103, HIGH STREET NORTH, DUNSTABLE

'Phone No. 275

Suppliers to the Luton Town Football Club



SLAZENGERS
DUNLOPS ❖ UANDI

If you require Footballs, Jerseys, Shorts,
Hose, Shinguards, Goal Nets etc., etc., call
and see us. All these are held in stock.



AYRES
GRAYS ❖ ETC., ETC.

We hold a great selection of
TENNIS RACKETS

Tennis Rackets Restrung and Repaired on the Premises by Specialists

TENNIS NETS ❖ POSTS ❖ BALLS
BOUNDARY NETTING ETC., ETC., IN STOCK

CRICKETERS *now is the time to obtain your* **GEAR**

BATS, BALLS, LEG GUARDS, STUMPS, CAPS, BOOTS, GLOVES ETC.

Practice Netting also in stock

FISHING TACKLE IN GREAT VARIETY

DARTS and FLIGHTS to Suit Every Player

Agents for the well-known "Bedfordian" Darts and Flights

Call and See Our Range of TRAVEL GOODS

LEATHER AND FIBRE SUIT CASES ❖ ZIPP TRAVEL BAGS
SOFT TOP BLOUSE CASES ❖ CABIN TRUNKS ETC.

Also Leather Straps, Folio Cases, School Bags, Handbags