

LUTON TOWN FOOTBALL AND ATHLETIC CO. LTD.

**OFFICIAL
JOURNAL**

PRICE 2d



FOOTBALL LEAGUE—DIVISION II

SATURDAY, SEPTEMBER 27th, 1947

LUTON TOWN v. PLYMOUTH ARGYLE

“TRUE-FORM”

The Finest Footwear in the Town



BUY DIRECT FROM THE MAKERS



LOCAL BRANCH:

32, GEORGE STREET

Head Office and Factories: NORTHAMPTON

LILLYWHITES *versus*.....

HOME GROUND ★ LEAGRAVE ROAD

OUR TEAM FOR THE YEAR

Kick Off 8 a.m.

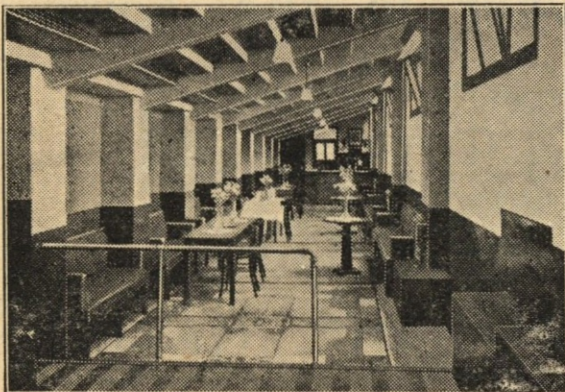
	Goal	Our Colours	Lilywhite
	Pricelow	Opponents	Any other colour
2		3	
D. Ores		Gates	
4	5	6	
Oaks	F. Loorings	Longpoles	
7	8	9	10
F. Irewood	C. Iron	B. Oxes	T. R. Ellis
			11
			L. Adders
Referee	T. Imber (Control)		
Linesmen	D. Liveryquick		
		Reserves	Seymour B. Oxes
			N. P. Banks

OPEN COMPETITION (Not yet up to Pre-war standard)

"Twenty Bobbers" List still Open

UP THE LILLYWHITES! *We are always at home*

LUTON BOBBERS STAND CLUB *Telephone 2566*



BOBBERS NOTES

This summer has been put on record for the long period we had without rain, and we must agree it made things very difficult in respect of our wells, crops, gardens, etc., not forgetting the fields of sport such as football grounds, and quite rightly everyone was asking for the much needed raindrops to replenish all that the dry summer had scorched up. This very often comes at a time when a good number of us don't want it, for instance on Saturday, which made us feel sorry for the spectators who regularly take up their positions on the main terraces, for the game had not been in progress many minutes before a heavy

storm broke over the ground and quite a large number lost seeing a lot of the game through having to take cover, which goes to prove how much our Building Fund is needed to cover those terraces. Of course you all know that it is impossible to make a start yet, but there is no reason why we should not get the money to pay for it, so that when we do get the word "go" we assure you it will be put in hand at once. That is why our collectors are out again today and as it will be three weeks before we have another first team game we ask you to make this collection a record, and to do that we shall require £33. As Tottenham will be our next home game, let them see that you have given more than you did last year when they paid us a visit - at that game you gave us £23/11/7. We will let you know in the match card next issue if you have achieved this amount. Perhaps some of you would like to make a donation to our Building Fund. If so, please send it to Mr. J. Collier, Hon. Treasurer, c/o Bobbers Stand Club.

With Plymouth as our visitors today, we are hoping to gather two points and as our next three games are away from home, we feel the boys will do well to share the six points.

Quite a lot of you sent your 1/2 last week, to renew your membership. Now there are still a lot of you that have not, so now Bobbers what about doing so today! Also any of you who have not yet become members can obtain refreshments at all parts of the ground from the Bobbers' Refreshment Bars. Minerals and eatables etc., at very moderate prices.

LUTON FOOTBALL AND



TOWN ATHLETIC CO.

Telephone No. 3151.

LIMITED.

CLUB NOTES

Today we are hosts to one of our bogey teams, to wit Plymouth Argyle. The last time we gathered full points from them was when we visited them in November, 1937 and won by four goals to two. When Plymouth visited us on February 1st last they beat us by the odd goal in seven and so gained a double over us. There was, if you remember, thick snow on top of solid ice on the ground that day and this was a great factor in the reason for losing for we were still interested in the F.A. Cup whereas Plymouth had been knocked out. We had every hope of beating Burnley here on the following Saturday and our boys did not go into the tackle as they might have done had they not got this other game so near at hand, but to give credit where it is due Plymouth adapted themselves to the conditions much better than we did and although we had a storming finish and might easily have saved a point in the end the leeway was too great to make up and we had to admit defeat at the final whistle. We hope to reverse that decision today and although at the time of writing these notes the team is doubtful due to injuries and illness, we should gain two valuable points.

It will be October 25th, before we see the lads in action again as our next three matches are all on opponents' grounds. This is hard going, especially so early in the season, for they are all very stiff games and we shall do well to pick up an average of one point per match. This being so we shall probably find ourselves lower in the table than we are at present but shall gain the advantage later in the season when we have a good run of home matches. We have not even a reserve game here on October 4th, and so the Colts will have the use of the ground to play a South Midlands fixture with Marston Shelton. In the morning of October 4th, the Luton Schoolboys will be playing Barnet Schoolboys in Round 1 of the English Schools' Shield, kick-off will be at 10.30 a.m. and a good game should be witnessed.

We had to leave both points at Barnsley again last Saturday, but it was not such a heavy defeat as was given out over the mike at the end of the Stiffs' game with Millwall. In the rush which is always the case when the results are coming through on the telephone, mistakes are likely to occur, and apparently the figure 3 was taken for a 5. This is the first time such a mistake has occurred and we will do our best to see it does not happen again.

The Reserves had a good win against Millwall here last Saturday but could not repeat the performance against Fulham at Craven Cottage last Wednesday, although we had practically all the game in the second half and missed a penalty, whereas Fulham scored twice from penalties. From this it will be deduced that it was a dirty game but curiously enough such was not the case. Tackles which in the normal course would not have been looked on as infringements were penalised and another time Les Hall was struck in the face, evidence of which could plainly be seen at the time, which was another cause of the harshest decision.

Next Wednesday the Stiffs' play Ipswich Town in a Football Combination game. The kick-off unfortunately has to be made at 3.15 p.m., as the light is rapidly drawing in now.

Saturday, October 4th, 1947

KICK-OFF 10.30 a.m.

English Schools Shield—Round 1

Luton Schoolboys v. Barnet Schoolboys

PRICES OF ADMISSION:

STAND (Enclosure only)	Adults 1/6	Boys 1/-
GROUND and BOBBERS	Adults 1/-	Boys 6d.

KICK-OFF 3.15 p.m.

South Midlands League—Premier Division

Luton Town Colts v. Marston Shelton

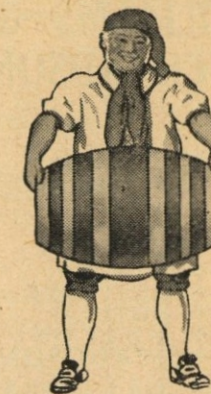
USUAL RESERVE TEAM PRICES

OVERCOATS RAINCOATS SPORTS COATS PULLOVERS GLOVES SCARVES, Etc.

MARES FOR MEN'S WEAR

CHARLES MARES Ltd., 65-67, GEORGE STREET, LUTON. - Tel. 625
and at 18, Market Place, ST. ALBANS and 28, Gold Street, KETTERING

You, too, will prefer J.W. GREEN'S



J. W. GREEN LTD., THE BREWERY, LUTON.

TELEPHONE: LUTON 3131.

TELEPHONE 223
ESTABLISHED 1860

H. WHITE
(LUTON) LTD.

High Class
FOOTWEAR
for
The Family

24/30, MANCHESTER ST.
LUTON

'Phone: LUTON 1961
Proprietor: R. HARRIS

'Rons'
Gentlemen's
Hairdresser

6, MILL STREET
LUTON
BEDS.

Saloon Service
Ground Floor

Appointments First Floor

LUTON TOWN

Shirts White
Knickers Black
Stockings Black with White Tops

2 **Cooke** Right Back
4 **Soo** Right Half
7 **Shanks** Outside Right
8 **Duggan** Inside Right

Referee—
Mr. F. LOWE (Bath)

11 **Strauss** Outside Left
10 **Davies** Inside Left
6 **Rundle** Left Half
3 **Jones, P.** Left Back

PLYMOUTH ARGYLE
Shirts Green, Black Collars and Cuffs
Knickers White
Stockings Green and Black Rings

B. Stretton
Goal

5 **Gager** Centre Half
9 **Billington** Centre



9 **Tadman** Centre
5 **Pengelly** Centre Half

Shortt
Goal

Football League—Division 2

3 **Hughes** Left Back
6 **Owen** Left Half
10 **Driver** Inside Left
11 **Waugh** Outside Left

Linesmen—
Blue Flag: Mr. R. R. HAY (Romford, Essex)
Red Flag: Mr. W. J. MULLER (London)

8 **Hall** Inside Right
7 **Jones, L.** Outside Right
4 **Boyd** Right Half
2 **Ratcliffe** Right Back

Kick - Off 3.15 p.m.

SPECTATORS ARE ASKED NOT TO CROSS THE PLAYING FIELD AFTER THE MATCH

Telephone:
Luton 1255 - 1256

For ARTISTIC WALLPAPERS

CHARLES BIRD & Sons Ltd.

Glazing Contractors

COLLINGTON ST., LUTON
For QUALITY PAINTS

"Triplex" Safety Glass
Motor Screens (Fitted)
Makers of MIRRORS, SPLASH BACKS, GLASS SHELVES and GLASS FIRE SCREENS

HARRY CANHAM & SON

Export Packers
Export Leatherboard Post Boxes
Cardboard Box, Packing Case
Ply Box & Crate Manufacturers

GROVE ROAD, LUTON

TELEPHONE 458

W. CHAMBERLAIN & Co.

Telephone: LUTON 329
106, DUNSTABLE ROAD, LUTON

IRONMONGERY & GARDEN REQUISITES
BRUSHES & BROOMS for Home and Factory
PAINTS & DISTEMPERS
OILS, WALLPAPER Etc.
as available

YOUR KIND ENQUIRIES INVITED

YOUR WINNING GOAL

FOR BEST QUALITY

RADIO, TELEVISION & ALL ELECTRICAL SUPPLIES

IS

A. T. SNOWDEN'S

171, DUNSTABLE ROAD
AND
24, MILL STREET, LUTON

'PHONE: LUTON 1496

AGENTS for
BUSH
COSSOR
FERRANTI
H. M. V.
PHILIPS
PHILCO
PILOT
ULTRA

RELIABLE
RADIO
TELEVISION
ELECTRICAL
REFRIGERATION
INSTALLATIONS
AND REPAIRS
CARRIED
OUT BY
EXPERTS

HELEY'S RESTAURANT

MILL STREET
Next to Palace Cinema

● After the Match
call for a Special

**FISH AND
CHIP TEA**

PROPRIETOR : : A. E. HELEY

WILLIAMS & RICHARDSON

Radio, Television and Electrical Engineers

Agents for—

- ❖ MURPHY
- ❖ H. M. V.
- ❖ PHILLIPS
- ❖ PHILCO
- ❖ MARCONI
- ❖ FERGUSON

174, Biscot Rd. & 17, DURHAM RD. LUTON

'Phone: 593 and 2012



Where can I get good printing?

E. A. ALLEN & SON (Luton) LTD.

for **PRINTING** of **QUALITY**

424 DUNSTABLE ROAD 'Phone LUTON 1626

E. A. GREEN

The noted shops for **BOOKS**

of all kinds STATIONERY FOUNTAIN PENS TOYS and FANCY GOODS

25, NEW BEDFORD RD & 228, BISCOT ROAD LUTON

PHONE 476

TODAY'S HALF-TIME SCORES

NOTE. The letter in the Programme corresponds with the letter on the Board—thus A 0-1 means that the first-named club has scored 0 and their opponents 1.

FIRST LIST

A	ASTON VILLA	v.	HUDDERSFIELD
B	BOLTON WAN.	v.	MIDDLESBRO'
C	BURNLEY	v.	ARSENAL
D	EVERTON	v.	LIVERPOOL
E	GRIMSBY T.	v.	BLACKPOOL
F	MANCH. CITY	v.	BLACKBURN
G	PORTSMOUTH	v.	CHARLTON A.
H	PRESTON N. E.	v.	MANCH. UN.
K	STOKE CITY	v.	SHEFFIELD UN.
L	SUNDERLAND	v.	DERBY CO'NTY.
M	WOLVES	v.	CHELSEA
N	BRENTFORD	v.	BARNLSLEY

SECOND LIST

A	CARDIFF C.	v.	BRADFORD
B	CHESTERFIELD	v.	BURY
C	FULHAM	v.	NEWCASTLE
D	LEEDS UNITED	v.	BIRMINGHAM
E	LEICESTER C.	v.	WEST BROM.
F	MILLWALL A.	v.	SOUTHAMPTON
G	WEDNESDAY	v.	NOTTS. FOR.
H	TOTTENHAM	v.	DONCASTER
K	WEST HAM U.	v.	COVENTRY C.
L	ALDERSHOT	v.	BRIGHTON & H.
M	BOURNEM'UTH	v.	WALSALL
N	BRISTOL ROV.	v.	BRISTOL CITY

THIRD LIST

A	CRYSTAL PAL.	v.	WATFORD
B	IPSWICH T.	v.	READING
C	NORTHAMPT'N	v.	NORWICH C.
D	NOTTS. CO'TY	v.	EXETER CITY
E	SOUTHEND U.	v.	NEWPORT CO'
F	SWANSEA T.	v.	LEYTON O.
G	SWINDON T.	v.	PORT VALE
H	TORQUAY U.	v.	QUEEN'S P. R.
K	BRADF'D CITY	v.	STOCKPORT C.
L	HALIFAX T.	v.	LINCOLN C.
M	GATESHEAD	v.	YORK CITY
N	WREXHAM	v.	ACCRINGTON

TIMBER ?

LILLYWHITE'S

'PHONE 1964

LEAGRAVE ROAD

Motorists!

Fit

TRIPLEX SAFETY GLASS

Consult

OGDEN & CLEAVER LTD.

(GLASS DEPT.)

Stuart St., Luton

'PHONE 580

Car Hire Service

IF YOUR TEAM LETS YOU DOWN

"We Won't"

P. COOK & Co.

15, Shirley Rd. LUTON

'Phone No. 4292

FIXTURES, 1947 - 48

FIRST XI Division II

		1946/47		F. A.	
Sat., Aug. 23	Coventry City	0 0	A	1 4	
Wed., .. 27	Brentford	..	A	3 0	1
Sat., .. 30	Newcastle United	4 3	H	2 0	1
Wed., Sept. 3	Brentford	..	H	3 0	2
Sat., .. 6	Birmingham City	0 1	A	1 2	3
Mon., .. 8	Leicester City	1 2	A	1 2	1
Sat., .. 13	West Bromwich Albion	2 0	H	1 1	1
Wed., .. 17	Leicester City	1 2	H	1 2	0
Sat., .. 20	Barnsley	0 4	A	0 0	3
Sat., .. 27	Plymouth Argyle	3 4	H
Sat., Oct. 4	Bradford	..	A	1 2	..
Sat., .. 11	Cardiff City	..	A
Sat., .. 18	Sheffield Wednesday	1 1	A
Sat., .. 25	Tottenham Hotspur	3 2	H
Sat., Nov. 1	Millwall	0 2	A
Sat., .. 8	Chesterfield	1 1	H
Sat., .. 15	West Ham United	1 2	A
Sat., .. 22	Bury	2 0	H
Sat., .. 29	Southampton	3 1	A
Sat., Dec. 6	Doncaster Rovers	..	H
Sat., .. 13	Nottingham Forest	2 4	A
Sat., .. 20	Coventry City	1 1	H
Fri., .. 26	Leeds United	..	A
Sat., .. 27	Leeds United	..	H
Sat., Jan. 3	Newcastle United	2 7	A
Sat., .. 10	F.A. Cup (Round 3)
Sat., .. 17	Birmingham City	1 3	H
Sat., .. 24	F.A. Cup (Round 4)
Sat., .. 31	West Bromwich Albion	2 1	A
Sat., Feb. 7	Barnsley	3 1	H
Sat., .. 14	Plymouth Argyle	1 2	A
Sat., .. 21	Bradford	3 0	H
Sat., .. 28	Cardiff City	..	H
Sat., Mar. 6	Sheffield Wednesday	4 1	H
Sat., .. 13	Tottenham Hotspur	1 2	A
Sat., .. 20	Millwall	3 0	H
Fri., .. 26	Fulham	2 0	H
Sat., .. 27	Chesterfield	1 2	A
Mon., .. 29	Fulham	1 2	A
Sat., April 3	West Ham United	2 1	H
Sat., .. 10	Bury	0 3	A
Sat., .. 17	Southampton	2 2	H
Sat., .. 24	Doncaster Rovers	..	A
Sat., May 1	Nottingham Forest	3 2	H

RESERVE FIXTURES Football Combination

		1946/47		F. A.	
Sat., Aug. 23	Cardiff City	1 3	H	1 0	2
Wed., .. 27	Northampton Town	1 1	H	0 1	6
Sat., .. 30	Birmingham City	0 1	A	0 6	6
Mon., Sept. 1	Reading	1 4	A	2 3	2
Sat., .. 6	Fulham	..	H	4 2	2
Wed., .. 10	Leyton Orient	5 1	H	1 1	1
Sat., .. 13	Leyton Orient	0 2	A	1 1	1
Sat., .. 20	Millwall	0 3	H	3 1	1
Wed., .. 24	Fulham	..	A	1 3	3
Sat., .. 27
Wed., Oct. 1	Ipswich Town	1 3	H
Sat., .. 4	Northampton Town	2 6	A
Wed., .. 8	Southend United	1 0	H
Sat., .. 11	Plymouth Argyle	3 1	H
Sat., .. 18	Norwich City	9 2	H
Sat., .. 25	Crystal Palace	3 3	A
Sat., Nov. 1	Crystal Palace	2 0	H
Sat., .. 8	Swindon Town	1 1	A
Sat., .. 15	Queens Park Rangers	..	A
Sat., .. 22	Cardiff City	0 2	A
Sat., .. 29	Reading	1 1	H
Sat., Dec. 6	Norwich City	2 3	A
Sat., .. 13	West Ham United	..	H
Sat., .. 20	Ipswich Town	2 2	A
Thurs., .. 25	Southend United	1 2	A
Fri., .. 26	Birmingham City	2 1	H
Sat., .. 27	Millwall	0 5	A
Sat., April 3	West Ham United	..	A
Wed., .. 7	Plymouth Argyle	0 4	A
Sat., .. 10	Swindon Town	7 2	H
Sat., .. 17	Queens Park Rangers	..	A
Sat., .. 24
Sat., May 1
Combination Cup					
Sat., Jan. 3	Coventry City	1 1	H
Sat., .. 10	Northampton Town	1 0	H
Sat., .. 17	Birmingham City	0 0	A
Sat., .. 24	Leicester City	0 1	A
Sat., .. 31	Watford	2 0	H
Sat., Feb. 7	Norwich City	0 2	A
Sat., .. 14	Norwich City	1 2	H
Sat., .. 21
Sat., .. 28	Ipswich Town	1 1	A
Sat., Mar. 6	Watford	0 1	A
Sat., .. 13	Birmingham City	3 1	H
Sat., .. 20
Fri., .. 26	Northampton Town	1 1	A
Sat., .. 27	Leicester City	1 3	H
Mon., .. 29	Coventry City	0 1	A
Sat., .. 24	Ipswich Town	3 0	H

LEAGUE TABLES

LEAGUE DIVISION II

	Pld.	Won	Drn.	Lost	For	Agst.	P.
2	Bradford	9	0	7	23	21	9/14
1	West Brom. Albion	9	0	6	2	11	13/4
3	Newcastle United	9	1	5	2	2	31/8
4	Birmingham City	9	1	5	2	2	12/3
5	Cardiff City	9	1	5	3	2	17/10
6	Leeds United	9	1	5	0	4	20/2
7	West Ham United	9	1	5	4	4	22/13
8	Southampton	9	1	4	2	3	14/14
9	Tottenham Hotspur	9	1	4	3	3	16/11
10	Coventry City	9	1	4	1	4	17/12
11	LUTON TOWN	9	1	4	4	12	15/9
12	Doncaster Rovers	9	1	3	3	3	14/16
13	Sheffield Wednesday	9	1	4	5	1	17/9
14	Fulham	9	1	4	5	1	15/13
15	Bury	9	1	3	4	2	14/13
16	Barnsley	9	1	4	4	0	15/15
17	Leicester City	9	1	3	2	3	10/13
18	Chesterfield	8	9	3	1	4	8/11
19	Notts Forest	9	1	3	0	6	7/10
20	Plymouth Argyle	9	1	2	2	3	5/5
21	Millwall	8	9	1	2	3	4/8
22	Brentford	9	1	1	0	1	8/7

FOOTBALL COMBINATION—Section "A"

	Pld.	Won	Drn.	Lost	For	Agst.	P.
West Ham United	10	7	1	2	32	14	15
Birmingham City	10	6	1	3	18	7	13
Fulham	10	6	1	3	21	14	13
Ipswich Town	9	6	1	2	21	17	13
Swindon Town	9	5	2	2	20	14	12
Reading	10	5	1	4	24	24	11
LUTON TOWN	9	4	2	3	19	19	10
Cardiff City	9	4	1	4	10	12	9
Northampton Town	9	3	2	4	26	25	8
Southend United	9	3	2	4	12	16	8
Leyton Orient	8	3	2	3	13	18	8
Queens Park Rangers	10	1	6	3	13	17	8
Plymouth Argyle	10	3	1	6	15	19	7
Millwall	10	3	1	6	15	22	7
Norwich City	10	2	2	6	17	23	6
Crystal Palace	8	1	0	7	4	19	2

Next Match, Wednesday, October 1st, 1947

KICK-OFF 3.15 p.m. FOOTBALL COMBINATION

LUTON TOWN RES. v. IPSWICH TOWN RES.

ADMISSION : Centre Stand 2/- : Stand and Enclosure 1/6, Boys 1/- : Ground (under cover) 1/3 : Ground (Kenilworth Road) 1/-, Boys 9d. All Prices include Entertainment Tax

G. A. WILD & SONS

THE
TOWN'S LEADING SPORTS OUTFITTERS
and Fancy Leather Goods Dealers and Saddlers

14, MANCHESTER STREET, LUTON

Also at

'Phone No. 780

103, HIGH STREET NORTH, DUNSTABLE

'Phone No. 275

Suppliers to the Luton Town Football Club

*Why not call on us after the match if
you require:—*



- ★ Footballs, Jerseys, Shorts, Hose
- ★ Shin Guards, Boots, Goal Nets etc., etc.



Agents for Manfield, Cotton Oxford, Embekay

WE WELCOME CLUB ENQUIRIES

Rugby, Hockey, Badminton, Squash Equipment a Speciality

A great selection held in stock

INDOOR GAMES in GREAT VARIETY

DARTS and FLIGHTS

to suit
every player

Agents for the well-known

★ "BEDFORDIAN"

DARTS and FLIGHTS

*Let us return your Bristle Dart Board to the original
manufacturers for a complete renovation—the result as new*

Agents for Allcock's and Alfred Morris's Fishing Tackle

**Call and See Our Range of TRAVEL GOODS
HANDBAGS and FANCY LEATHER GOODS**

THE BEST SELECTION IN TOWN