

47-48

BURY FOOTBALL

OFFICIAL
PROGRAMME

2^D

CLUB CO. LTD



THE ONLY ADDRESS in the World
where the

ORIGINAL BURY PUDDINGS

ARE MADE, IS

CASEWELL'S

60 UNION STREET, BURY.

Established over 120 years.

None GENUINE without our LABEL.

We give Prompt Attention to all Post
Orders.

THE PUDDINGS THAT HAVE MADE BURY
FAMOUS.

The Service is Quiet and Attentive,
and the Cooking is always Excellent.

ELSINORE CAFES

HOT and COLD LUNCHEONS

AFTERNOON TEAS

Dainty Cakes, Fruit, Cream and Ices

ELSINORE CAFES LTD.,

MARKET STREET . . . BURY

Telephone Bury 1052

9 CHESHAM ROAD . . . BURY

Telephone Bury 2056

BOLTON STREET . . . BURY

When in Southport visit our

CAFE AT LORD STREET (Telephone 4676)

Goal Scorers to date.

FIRST TEAM—Constantine 15, Carter 9, Daniel 7, Kilshaw 4,
Bellis 4, Woodcock 3, Berry 3, Quigley 3, Jones 2, Halton 2,
Peters 1, Massart 1. Total 54.

SECOND TEAM—Crosbie 20, Jenkins, 9, Massey 6, Peters 4,
Worthington, 4, Carter 4, Hurst 3, Woodcock 3, Jarman 3,
Williams, 3 Constantine 2, Lindsay 2, Bickerstaffe 2, Kay 1,
Daniel 1, Quigley 1, Berry 1, Whitworth 1, Jones 1. Total 71.

CLIFF HOLDEN (MOTORS) LTD.

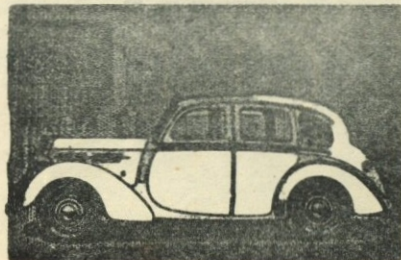
AGENTS AND STOCKISTS.

Standard and Triumph Cars

ARIEL, TRIUMPH, PANTHER

and B.S.A. MOTOR CYCLES.

CLIFF HOLDEN (MOTORS) LTD.



MILLET STREET SHOWROOM & GARAGE,

— — BURY — —

BURY FOOTBALL CLUB CO. LTD.

GIGG LANE, BURY.

PRESIDENT . . . H. DUCKWORTH.

BOARD OF DIRECTORS:

Messrs. G. B. HORRIDGE (Chairman), J. PRESTWICH (Vice-Chairman),
C. DEAN, C. CLARKE, H. DUCKWORTH A. LAWSON. and
Dr. J. S. B. MACKAY.

Secretary Manager: NORMAN BULLOCK.

Ground and Registered Office: GIGG LANE, BURY.

Telephone 1067

Colours:—White Shirts with Navy Blue Collars, and Navy Knickers

No. 20. Vol. 1

Saturday, April 10th

v Luton Town

CLUB GOSSIP.

The season is drawing to a close and after tonight's visit of Luton Town we have only one more Second Division game at Gigg Lane—that against Leicester City on April 24th. The struggle at the foot of the League table continues with a grim intensity but although our position is not yet absolutely secure it does appear we are reasonably free from danger. A victory over Luton Town to-night would probably completely remove the present remote threat. So we hope the team will oblige with a convincing victory.

After a very happy weeks sojourn in Cornwall the team returned north on Wednesday bringing back a point from Plymouth and being credited, as expected, with smart victory over a Cornwall amateur side at St. Austell on Tuesday evening. The point earned at Plymouth was in every way merited, though it has to be admitted the football played by both teams was not

very inspiring. This was largely due to the strong wind that blew downfield. We had to face it in the first half, and when at the end of forty-five minutes we were still on terms there was every reason to think we could snatch victory in the second half. But as often happens, our boys were unable to use the wind to any real purpose and a goalless draw was a fitting result.

The party made their headquarters during the stay at Newquay and the brief holiday was greatly enjoyed. Tuesday night's match against the Cornwall side ended in 3-0 win for our team, Halton (penalty) Whitworth and Constantine scoring. Though playing well within themselves they were always masters in a game played in a very happy spirit. Modestly we can claim that the demeanour of the side added to the prestige of the club in that far away South West corner of the country.

MILLS & SEDDON LTD.,

MOTOR COACH PROPRIETORS,

WHARFE GARAGE

Tel Radcliffe 2020

&

ALBERT ROAD

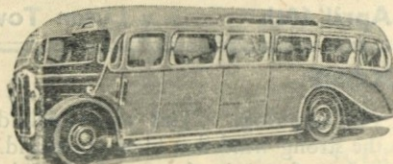
Tel: Farnworth 5301

THE SHAKERS USE THEM

WHY NOT YOU?

HOT OXO A BEEFY DRINK
MADE IN A MOMENT

FRED CAVEN



PASSENGER TRANSPORT
OPERATOR.

Walmersley Road Garage,
Phone BURY 683

MOTORISTS! YOU CAN RELY ON

"BRAMEC"

BRAKE AND CLUTCH LININGS
FOR SERVICE AND SECURITY

MANUFACTURED BY

HALL & NIELSEN LIMITED

BEAVER MILLS BURY EAST GARDEN ST.
Phone Bury 953 Phone Bury 953

Send 3d. Stamp for full details of the new
Super Football Game

SUBBUTEO

THE GAME OF

TABLE SOCCER

PATENT APPLIED FOR

THE REPLICA OF ASSOCIATION FOOTBALL

Play with 22 miniature men, ball and goals.
All the thrills of real Football! Dribbling,
corner and penalty kicks, offside, goal saves,
injuries, etc.

NO DICE - BLOWING - CARDS OR BOARDS

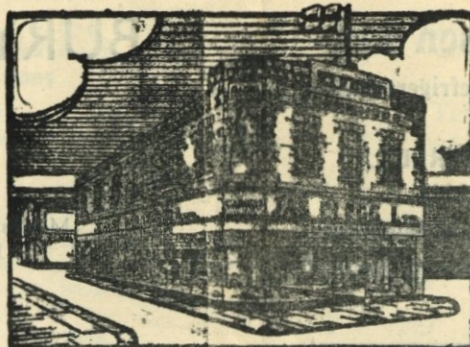
Victory or defeat depends upon the player instead of
the shake of a Dice or the turn of a Card.

P. A. ADOLPH, 9 The Lodge, Langton
Green, Tunbridge Wells, Kent.

FURNISH AT CLEGG'S

FINEST
VALUES
IN
THE NORTH

11-17 HAYMARKET ST.,
131 THE ROCK,
BURY
Phone 669



CASH
or
EASY TERMS
ARRANGED.

And at
HEYWOOD and
ACCRINGTON.

Established 1880

SHOOT, MAN, SHOOT!
AND DON'T MEANDER
THERE'S NO TIME NOW
FOR

AFRIKANDER

BRITAIN'S
MOST
FAMOUS
MIXTURE
3/4 1/2
PER OZ.

M.D. WIRELESS CO.

BURY

COLOURS—White Shirts with Navy Collars and Blue Knickers.

RIGHT LEFT

1 Grieves

2 G. Griffiths 3 W. Griffiths

4 Whitworth 6 Halton

7 Kilshaw 9 Massey 10 Daniel 11 Bellis

Referee: E. R. VARNEY

Linesmen: J. McCANN
H. J. PETHYBRIDGE

11 Waugh 10 Daniel 8 Duggan 7 Shanks

6 Owen 5 Hall 4 Gardner

3 Lake 1 Stretton 2 Cooke

LEFT RIGHT

LUTON TOWN

RADIO and DOMESTIC APPLIANCES

20 CROMPTON ST., BURY (opposite G.P.O.) Tel: 692.

YOUR MURPHY DEALERS.



KICK-OFF

THE BEST INFORMED
UP-TO-THE-MINUTE
FOOTBALL EDITION

FRANK SWIFT on SOCCER

Best Reports — Most Results.

Evening Chronicle

FOOTBALL EDITION

Advertising Rights acquired by The Property Publishing Company, 246, Watford Way, London, N.W. 4.

Established 1871

Tel: 797

HEAP & SON

LIMITED

SPECIALISTS IN
FASHIONS, FABRICS &
FURNISHINGS FOR
OVER SEVENTY YEAR

DEPARTMENTAL STORE,
THE ROCK, BURY.

E. W. B. SMITH & SON

(J. H. Smith).

1-3-5 HAYMARKET STREET, BURY.

Booksellers, Stationers,
Leather and Fancy Goods
Dealers.

CIRCULATING LIBRARY

Books of all kinds for all Ages.
Stationery for Home and Office

PHONE: BURY 222

READ

SPORTING RECORD

EVERY WEDNESDAY 3d.

BEST for FOOTBALL NEWS
and FORECASTS.

J. BENTLEY & SON,
PLUMBERS,
Fishpool, BURY

BL. 799.

Jackson & Mason Ltd.

Electrical, Radio & Refrigeration
 Engineers
43 PRINCESS STREET.
BURY. Tel. 2162.

Specialists in Public Address Equipment.

FIXTURES.

| First Team | | 1947-8 | 1946-7 | Reserve Team | | 1947-8 | 1946-7 | | | | |
|------------|----------------------------|--------|--------|--------------|---|---------|-----------------------------|---|---|---|---|
| Aug. 23 | Nottingham Forest ... a | 1 | 2 | 0 | 1 | Aug. 23 | Blackburn Rovers h | 5 | 2 | 1 | 4 |
| | 27 Tottenham Hotspur. h | 2 | 0 | 1 | 2 | | 27 Derby County..... a | 2 | 0 | 2 | 2 |
| | 30 Doncaster Rovers ... h | 4 | 2 | | | | 30 Blackpool..... a | 1 | 2 | 0 | 1 |
| Sept. 1 | Tottenham Hotspur a | 1 | 2 | 1 | 2 | Sept. 3 | Derby County h | 1 | 2 | 3 | 0 |
| | 6 Southampton a | 0 | 1 | 1 | 1 | | 6 Huddersfield Town... h | 0 | 2 | 0 | 3 |
| | 10 Sheffield Wednesday h | 1 | 2 | 4 | 2 | | 13 Bolton Wanderers ... a | 1 | 3 | 0 | 2 |
| | 13 Fulham h | 1 | 0 | 7 | 2 | | 17 Aston Villa h | 6 | 1 | 5 | 2 |
| | 15 Sheffield Wednesday a | 2 | 2 | 5 | 2 | | 20 Everton a | 1 | 4 | 0 | 1 |
| | 20 West Ham h | 1 | 2 | 4 | 0 | | 27 Chesterfield a | 2 | 1 | 2 | 3 |
| | 27 Chesterfield a | 2 | 1 | 1 | 3 | Oct. 4 | Wolverhampton W. a | 1 | 3 | 4 | 1 |
| Oct. 4 | Millwall h | 0 | 0 | 5 | 1 | | 11 Leeds United h | 0 | 1 | 2 | 4 |
| | 11 Coventry City a | 0 | 0 | 1 | 3 | | 18 Burnley a | 0 | 3 | 2 | 1 |
| | 18 Newcastle United... h | 3 | 5 | 2 | 2 | | 25 Preston North End ... h | 1 | 1 | 2 | 1 |
| | 25 Birmingham a | 0 | 2 | 3 | 0 | Nov. 1 | Stoke City a | 0 | 2 | 2 | 4 |
| Nov. 1 | West Brom. Albion... h | 1 | 2 | 4 | 0 | | 8 Manchester United ... h | 2 | 2 | 1 | 3 |
| | 8 Barnsley a | 1 | 2 | 0 | 4 | | 15 Sheffield United a | 2 | 3 | 0 | 5 |
| | 15 Plymouth Argyle h | 0 | 0 | 3 | 3 | | 22 West Brom. Albion... h | 6 | 1 | 1 | 3 |
| | 22 Luton Town a | 1 | 1 | 0 | 2 | | 29 Barnsley a | 1 | 3 | 0 | 3 |
| | 29 Brentford h | 2 | 2 | | | Dec. 6 | Newcastle United ... h | 1 | 0 | 4 | 4 |
| Dec. 6 | Leicester City a | 1 | 2 | 0 | 0 | | 13 Liverpool a | 3 | 4 | 2 | 2 |
| | 13 Leeds United..... h | 1 | 1 | | | | 20 Blackburn Rovers ... a | 0 | 1 | 3 | 2 |
| | 20 Nottingham Forest... h | 1 | 0 | 5 | 0 | | 25 Sheffield Wed. h | 2 | 0 | 1 | 0 |
| | 26 Cardiff City..... a | 2 | 2 | | | | 27 Sheffield Wed. a | 1 | 1 | 0 | 2 |
| Jan. 1 | Cardiff City h | 1 | 2 | | | Jan. 3 | Blackpool h | 2 | 1 | 1 | 1 |
| | 3 Doncaster Rovers ... a | 3 | 1 | | | | 10 Manchesler City h | 3 | 2 | 2 | 1 |
| | 10 F.A. Cup—3rd Rd. ... a | 0 | 1 | | | | 17 Huddersfield Town... a | 0 | 1 | 1 | 2 |
| | 17 Southampton b | 3 | 0 | 2 | 1 | | 24 | | | | |
| | 24 Barnsley..... h | 1 | 1 | 4 | 4 | | 31 Bolton Wanderers ... h | 2 | 2 | 1 | 4 |
| | 31 Fulham a | 1 | 1 | 0 | 2 | Feb. 7 | Everton..... h | 4 | 6 | 1 | 2 |
| Feb. 7 | West Ham a | 0 | 2 | 3 | 3 | | 14 Chesterfield a | 2 | 2 | 1 | 0 |
| | 14 Chesterfield h | 2 | 0 | 0 | 2 | | 21 Wolverhampton W... h | 1 | 1 | 0 | 2 |
| | 21 Millwall a | 7 | 1 | 0 | 1 | | 28 Leeds United a | 4 | 0 | 0 | 2 |
| | 28 Coventry City h | 0 | 0 | 1 | 0 | Mar. 6 | Burnley h | 0 | 0 | 0 | 0 |
| Mar. 6 | Newcastle United..... a | 0 | 1 | 1 | 1 | | 13 Preston North End... a | 0 | 1 | 2 | 1 |
| | 13 Birmingham..... h | 1 | 1 | 2 | 0 | | 15 Aston Villa..... a | 1 | 2 | | |
| | 20 West Brom. Albion... a | 3 | 3 | 0 | 3 | | 20 Stoke City h | 4 | 1 | 1 | 1 |
| | 26 Bradford h | 0 | 4 | 6 | 3 | | 26 Manchester City..... a | 1 | 2 | 0 | 2 |
| | 27 | | | | | | 27 Manchester United... a | 0 | 2 | 1 | 4 |
| | 29 Bradford a | 3 | 5 | 2 | 2 | April 3 | Sheffield United h | 3 | 2 | 0 | 2 |
| April 3 | Plymouth Argyle a | 0 | 0 | 1 | 3 | | 10 West Brom. Albion... a | | | 2 | 0 |
| | 10 Luton Town h | | | 3 | 0 | | 17 Barnsley h | | | | |
| | 17 Brentford..... a | | | | | | 24 Newcastle United ... a | | | 1 | 1 |
| | 24 Leicester City h | | | 2 | 3 | May 1 | Liverpool h | | | 3 | 1 |
| May 1 | Leeds United..... a | | | | | | | | | | |

RING
3217
BOLTON

FULLMEAT

Proprietors:
N. BOOTH
R. BOOTH

PIES

BROOKFIELD BAKERY . TONGE BRIDGE

BOLTON

BURY SAVINGS BANK

THE PEOPLE'S
BANK SINCE
1822

DEPOSITS RECEIVED from
1/- TO £500 ANNUALLY
INTEREST—2½%

BRANCHES AT
RADCLIFFE
WHITEFIELD
RAMSBOTTOM
& HEYWOOD

THE ALE

BURY BREWERY
MILD

Bury Brewery Co. Ltd.,
George Street.
Bury.

NUFFIELD SPECIALISTS - NUFFIELD SPECIALISTS - NUFFIELD SPECIALISTS

Specialised
Service

plus Efficiency Equipment and
courtesy, make it a pleasure to
deal with

WOODBURN & SPENCE

Polefield Garage, Bury Ol Rd Prestwich. Pre 1704-1368
Hr Lane Garage, Higher Lane, Whitefield. Whi 2773-2513

MORRIS

WOLSLEY

RILEY

M.G.

NUFFIELD SPECIALISTS - NUFFIELD SPECIALISTS - NUFFIELD SPECIALISTS

BURY AMATEUR FOOTBALL CLUB.

J. BENTLEY & HOTEL, BURY

FIRST-CLASS
COMMERCIAL HOTEL

CENTRE OF TOWN WITH COMMERCIAL,
COFFEE, SMOKE AND PRIVATE ROOMS
WELL-APPOINTED BEDROOMS.

Luncheons and Teas.

TELEPHONE : 230

MAGEE'S ALES.

A. A. R. A. C.

Relief for the Suffering and Afflicted.
INDIGESTION CURED
ALFRED CROMPTON'S

Family Aperient Pills

The Best Medicine in the World for Bad Indigestion

PRICE 1/3

CROMPTON & PRESTON Ltd. BURY.

**GENERAL
WOOD TURNERS**
F. G. MAUNDER & A. MAUNDER
MOSS WORKS - TURF STREET,
- BURY -

| CLUBS | | | | CLUBS | | | |
|----------|-------------------|------|------|----------|----------------------|------|------|
| A | Scotland | | | L | Bradford | | |
| | England | | | | Birmingham City | | |
| B | Grimsby Town | | | M | Tottenham Hotspur | | |
| | Portsmouth | | | | Fulham | | |
| C | Chelsea | | | N | Chesterfield | | |
| | Sheffield United | | | | Leicester City | | |
| D | Everton | | | P | Millwall | | |
| | Manchester United | | | | Leeds United | | |
| E | Huddersfield Town | | | R | Sheffield Wednesday | | |
| | Arsenal | | | | Coventry City | | |
| F | Blackpool | | | S | Doncaster Rovers | | |
| | Middlesborough | | | | Barnsley | | |
| G | Blackburn Rovers | | | T | Cardiff City | | |
| | Liverpool | | | | Newcastle United | | |
| H | Manchester City | | | U | Southampton | | |
| | Bolton Wanderers | | | | Plymouth Argyle | | |
| J | Sunderland | | | V | Notts Forest | | |
| | Burnley | | | | West Bromwich Albion | | |
| K | Wolverhampton W. | | | X | West Ham United | | |
| | Preston North End | | | | Brentford | | |

SAM TAYLOR (Bury) LTD,

FOR

ALL SPORTS EQUIPMENT

OFFICIAL SUPPLIERS TO THE

BURY FOOTBALL CLUB

**VISIT-16 SILVER STREET,
BURY**

Telephone 320

Morning
Coffee

a
Speciality

L. E.

Sweets
and
Chocolates

PHILLIPS

BAKER CONFECTIONER

Victoria Buildings, Silver Street,

Phone BURY 753

PARTIES CATERED FOR
ON & OFF THE PREMISES

Phone BURY 1967 (Private)

Rothwell & Co. (Bury) Ltd.

PRINTERS

BOOKBINDERS

STATIONERS

etc.

UNION SQUARE,

BURY.

Telephone: Bury 263