



THE
LUTON TOWN FOOTBALL
AND ATHLETIC CO
LTD.

OFFICIAL
JOURNAL

PRICE
TWO PENCE



FOOTBALL LEAGUE—DIVISION II

SATURDAY, SEPTEMBER 17th, 1949

LUTON TOWN v. PRESTON NORTH END

“TRUE-FORM”

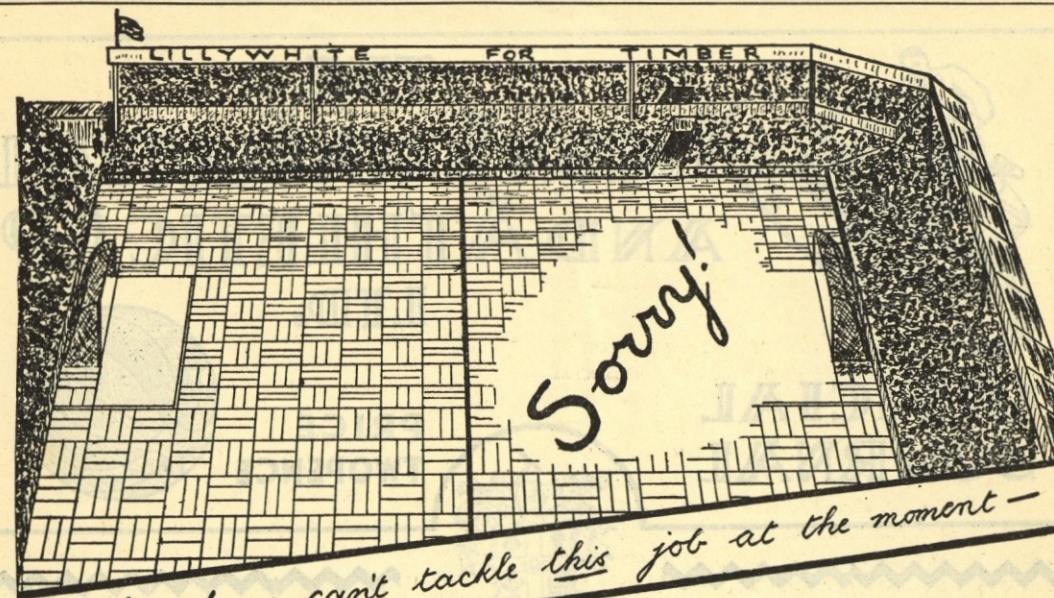
The Town's Leading Shoe Store

32, GEORGE STREET

FOR SHOES OF

QUALITY ★ CHARACTER ★ RELIABILITY





WE CAN OFFER YOU THE
NEW "MULTIPARC" BLOCK FLOORING

ALL PARTICULARS FROM-

LILLYWHITES · LEACRAVE RD. LUTON · 'PHONE LUTON 2812-3

LUTON BOBBERS STAND CLUB Telephone 2566

The winning number of the Penny-on-the-Ball Ticket will be announced over the loud speakers at the interval. The person holding the winning ticket can go to the rear of the Main Stand after the game and for 3d. purchase the ball from Mr. J. Collier.

The ticket number for the ball on Saturday, September 10th, 1949, was **37979** and the supporter who had this number was—

Mr. J. G. BARKER,
Chapel Farm, Hop-Pole, Nr. Spalding, Lincs.

*So far we have not gathered roses on our way
Neither does the sun shine every day
And only four points at home and one away
So why be surprised when things go wrong and your hair turns grey?
If we never suffered from defeat selfish we would grow
And other teams plans we would never know
So when things are dead against us try to bear in mind
We are not the only ones to whom fate proves unkind
Ups and downs, shouts and laughter, that's the way football goes
We cannot have wins and draws and escape the blows
Today we have Preston North End to juggle with the ball
Which makes us remember centre half McCall
In that third round Cup Tie, 1921|2, we lost three—two
So today boys go all out and see what you can do
As for the next line it will satisfy us all
If you buy a penny ticket on the Ball*

CLUB NOTES

It is with a feeling of possible revenge that we welcome Preston North End here to Kenilworth Road this afternoon, in the first League meeting between our two Clubs (if there is such a thing as revenge after such a long time) for on the only occasion we have met, which was in the F.A. Cup in 1921, Preston defeated us by 3 goals to 2.

To the older fans the very mention of Preston North End brings back memories of the all conquering teams the Deepdale Club fielded of yesteryear. The Preston Club have an impressive record and, among other achievements, were champions of the First Division for two seasons running and runners-up on four occasions. Their most outstanding feat, however, was achieved in 1888-89 season, when they not only pulled off the double by winning the Cup and the First Division Championship but in doing so did not suffer one single defeat in the League and did not concede a goal in the Cup Competition. Preston have reached the Final of the F.A. Cup on five occasions, winning it twice. The first, in 1888-89, when they beat the Wolves 3-0, and in 1937-38 they beat Huddersfield by the only goal scored.

This season, their first in Division II since 1934, Preston have averaged just over a point a match and like ourselves three of those matches have ended in a draw. If we try to deduce our chances this afternoon by comparing results against the same opponents, our lads are in for a tough time, for the "North Enders" have completed the double over Grimsby Town, drawn with Queen's Park Rangers at Shepherds Bush, and on Wednesday evening last defeated the Rangers 3-2, at Preston. One point in our favour however, is the fact that whereas we triumphed over Coventry City, here at Luton, Preston could only force them to a draw at Deepdale.

The game at Shepherds Bush, last Saturday, was one of those occasions best forgotten, although if several chances of scoring had been accepted a very different

tale of this game would have been told. Ironically enough one of our former players had a very big hand in our defeat, and while we are pleased to see Ted Duggan in such good form, we are only sorry that he should choose this particular occasion on which to inspire his team-mates to such a performance.

The "Stiffs" managed to pull one over Northampton Reserves last Saturday afternoon, through an odd goal scored by Peter Baxter, who incidently opened his scoring account with us. On Wednesday evening they encountered the all-conquering Birmingham Reserves, and although our lads tried very hard, they could not secure a point from their more skilful opponents. This week-end the Reserves visit Vetch Field for their game with Swansea Reserves and this should prove to be another hard game for our boys as Swansea are also highly placed in the Combination League Table, although they blotted their copy-book very badly last Saturday when they lost to Arsenal Reserves, at Highbury, by seven clear goals. Swansea however are a very different team on their own ground and our lads will do well if they can bring back a point from their visit to Wales this week-end.

Following the game at Bradford on Wednesday evening last, it is now certain that Tommy Kiernan will be out of the game for at least four weeks following the injury he received during that match. This is particularly bad news at the moment for we can ill-afford to lose such a talented player at this stage in the season. The remainder of the news from the "Injury Front" is rather brighter however, in as much as both Jim Mulvaney and Peter Walsh are almost recovered from their injuries and that Jim Pemberton has commenced light training after his cartilage operation. In fact we are playing Peter Walsh at centre forward at Swansea today and the outcome will be awaited with interest. On the try-out he had against Buckingham Town, on Thursday evening last, in a Friendly Match he showed very good form.

Next Match, Wednesday, 21st September, 1949

KICK - OFF 5.45 p.m.

o

LONDON MID-WEEK LEAGUE

LUTON TOWN "A" v. CRYSTAL PALACE "A"

Usual Reserve Team Prices of Admission

For SUITS, OVERCOATS, RAINCOATS and UNDERWEAR
OF QUALITY

YOU SHOULD VISIT

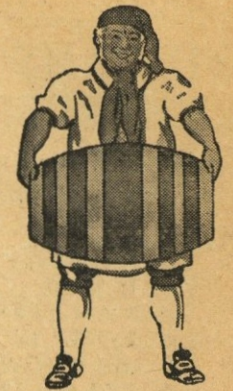
**MEN'S
WEAR**

MARES

**BOY'S
WEAR**

CHARLES MARES LTD., 65-67, George Street, LUTON

You, too, will prefer
J.W. GREEN'S
Quality Ales



J. W. GREEN LTD., THE BREWERY, LUTON.

TELEPHONE: LUTON 3131.

DAILY DELIVERIES
IN ALL DISTRICTS

**RANDALL &
WHITING LTD.**

WHOLESALE
AND RETAIL
MILK
DISTRIBUTORS
Pasteurised and T.T.

HEAD OFFICE:
125, NORTH ST., LUTON
Telephone: Luton 599

DAIRY:
HAVELOCK RD., LUTON

*Most Up-to-Date Equipment
in the County*

We cordially invite our Customers
to come and see our methods

'Phone: LUTON 1961
Proprietor: R. HARRIS

'Rons'
Gentlemen's
Hairdresser

6, MILL STREET
**LUTON
BEDS.**

Saloon Service
Ground Floor
Appointments First Floor

LUTON TOWN

Shirts White
Knickers Black
Stockings Black with White Tops

2 **Cooke**
Right Back
4 **Watkins**
Right Half
7 **Glover**
Outside Right
8 **Shanks**
Inside Right

Referee—
MR. G. SALMON
(Stoke-on-Trent)

11 **Langton**
Outside Left
10 **Knight**
Inside Left
6 **Robertson**
Left Half

3 **Cunningham**
Left Back

PRESTON NORTH END

Shirts Blue
Knickers White
Stockings Dark Blue

SPECTATORS ARE ASKED NOT TO CROSS THE PLAYING FIELD AFTER THE MATCH

Streten
Goal

5 **Owen**
Centre Half

2 **Arnison**
Centre



9 **Morrison**
Centre

5 **Waters**
Centre Half

Gooch
Goal

Football League—Division II

3 **Aherne**
Left Back

6 **Gardiner**
Left Half

10 **Taylor**
Inside Left

Linesmen—
Red Flag: Mr. N. W. HILLIER
(Northampton)
Blue Flag: Mr. G. L. DONALDSON
(London)

8 **Horton**
Inside Right

2 **Walton**
Right Back

Kick - Off 3.15 p.m.

**GLAZING CONTRACTORS
LEADED LIGHT MAKERS**

**PLATE
GLASS**
For All Trades

MIRRORS. To any shape or
design.

RE-SILVERING. Old Mirrors
as good as NEW.

*Decorative Art in Wallpapers
Quality Paints of All Kinds*

**CHARLES BIRD
& SONS, LTD.**

Collingdon Street, Luton
Telephones: 1255-1256

HARRY CANHAM & SON

*Export Packers
Export Leatherboard Post Boxes
Cardboard Box, Packing Case
Ply Box & Crate Manufacturers*

GROVE ROAD, LUTON

TELEPHONE 458

**W. CHAMBERLAIN
& Co.**

Telephone: LUTON 329
106, DUNSTABLE ROAD, LUTON

IRONMONGERY &
GARDEN REQUISITES
BRUSHES & BROOMS
for Home and Factory
PAINTS & DISTEMPERS
OILS, WALLPAPER Etc.
as available

YOUR KIND ENQUIRIES INVITED

RADIO,

AGENTS
for
BUSH
COSSOR
FERRANTI
H. M. V.
PHILIPS
PILOT
ULTRA

YOUR WINNING GOAL

FOR BEST QUALITY

TELEVISION & ALL ELECTRICAL SUPPLIES

IS

A. T. SNOWDEN'S

171, DUNSTABLE ROAD

AND

24, MILL STREET, LUTON

'PHONE: LUTON 1496

RELIABLE
RADIO
TELEVISION
ELECTRICAL
REFRIGERATION
INSTALLATIONS
AND REPAIRS
CARRIED
OUT BY
EXPERTS

**HELEY'S
RESTAURANT**

MILL STREET, Next to the Palace Cinema

**Special FISH & CHIP
DINNERS & TEAS**

served on match days

PRICE including
TEA, BREAD AND BUTTER **1/9**

Seating Accommodation
90

Proprietor:
A. E. Heley

WILLIAMS & RICHARDSON

Radio, Television & Electrical Engineers

Agents for—

- ✦ MURPHY
- ✦ H. M. V.
- ✦ PHILLIPS
- ✦ PHILCO
- ✦ MARCONI
- ✦ FERGUSON

174, Biscot Road & 17, DURHAM ROAD LUTON

'Phone: 593 and 2012

TODAY'S HALF-TIME SCORES

NOTE. The letter in the Programme corresponds with the letter on the Board—thus A 0-1 means that the first-named club has scored 0 and their opponents 1.

FIRST LIST

A DERBY CO'NTY.....	SUNDERLAND
B EVERTON	WOLVES
C FULHAM	CHELSEA
D NEWCASTLE U.....	MANCH. CITY
E WEST BROM.	BURNLEY
F BIRMINGHAM	LIVERPOOL
G BLACKPOOL	CHARLTON A.
H BOLTON WAN	ARSENAL
K HUDDERSFIELD	PORTSMOUTH
L MANCH. UN.	STOKE CITY
M MIDDLESBRO'	ASTON VILLA
N WEST HAM U.	GRIMSBY T.

Park Square Park Street

For

Quality Hardware
Paints and Decorators' Sundries
Crocery and Kitchen Needs

A. J. WILSHER

64 LANGLEY STREET
'PHONE LUTON 3924
(2 mins. Park Square)

OPEN SATURDAYS
PERSONAL ATTENTION
HERE →

Cumberland Street

Wilsher's Store

SECOND LIST

A BARNLEY	QUEEN'S P. R.
B BLACKBURN R.	BRADFORD
C BRENTFORD	CHESTERFIELD
D WEDNESDAY	SHEFFIELD UN.
E SOUTHAMPTON.....	LEEDS UNITED
F TOTTENHAM	BURY
G CARDIFF C.	LEICESTER C.
H COVENTRY C.	SWANSEA T.
K HULL CITY	PLYMOUTH AR.
L IPSWICH T.	LEYTON O.
M MILLWALL A.	NORWICH C.
N NOTTS. CO'TY	WATFORD

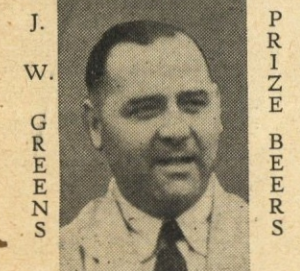
THIRD LIST

A TORQUAY U.	NOTTS. FOR.
B WALSALL	NEWPORT CO'.....
C BRIGHTON & H.....	BRISTOL CITY
D BRISTOL ROV.	BOURNEM'UTH
E EXETER CITY	ALDERSHOT T.
F PORT VALE	READING
G SOUTHEND U.	CRYSTAL PAL.
H SWINDON T.	NORTHANTS
K CREWE ALEX.	ACCRINGTON
L ROTHERHAM	DONCASTER R.....
M TRANMERE R.	WREXHAM
N YORK CITY	OLDHAM A.

Warden Tavern

2½ miles out of Luton on main Bedford Road

Proprietor: **Tom Hodgson**
Ex-Captain, Luton Town F.C.



Luncheons
Wedding Receptions : Social Functions : Evening Parties
Fully Licensed Large Car Park

Hello to a New Football Season



AS ALWAYS
PRINTING of QUALITY by E. A.

ALLEN & SON (Luton) LTD.
424, DUNSTABLE ROAD
'Phone LUTON 1626

Motorists!

Fit

TRIPLEX SAFETY GLASS

Consult

OGDEN & CLEAVER LTD.

(GLASS DEPT.)

Stuart Street, Luton
'PHONE 746-7

BEDFORDSHIRE Building Society

2¼% p.a.

Income Tax Paid

INVESTMENTS ACCEPTED

6d. - £5,000

16, King Street LUTON

Branch Manager Telephone
C. L. ROBSON 4577

FIXTURES, 1949-50

FIRST XI Division II		F. A.		RESERVE FIXTURES Football Combination		F. A.	
		1948/49				1948/49	
Sat., Aug. 20	West Ham United ...	0 1	H 2 2	Sat., Aug. 20	Reading ...	3 0	A 0 0
Wed., " 24	Coventry City ...	2 0	H 2 0	Mon., " 22	Millwall	A 1 3
Sat., " 27	Sheffield United	A 2 2	Sat., " 27	Southend United	H 0 0
Mon., " 29	Coventry City ...	0 2	A 0 1	Wed., " 31	Coventry City	H 4 1
Sat., Sept. 3	Grimsby Town ...	1 1	H 0 0	Sat., Sept. 3	Northampton Town ...	3 2	A 3 3
Wed., " 7	Bradford ...	1 4	A 0 1	Wed., " 7	Queens Park Rangers ...	5 2	H 1 0
Sat., " 10	Queens Park Rangers ...	3 0	A 0 3	Sat., " 10	Northampton Town ...	5 2	H 1 0
" " 17	Preston North End	H ...	Wed., " 14	Birmingham City ...	2 0	H 0 2
" " 24	Swansea Town	A ...	Sat., " 17	Swansea Town ...	0 3	A ...
Sat., Oct. 1	Leeds United ...	0 0	H ...	Wed., " 21	Birmingham City ...	3 1	A ...
" " 8	Leicester City ...	1 1	H ...	Sat., " 24	Arsenal	H ...
" " 15	Bury ...	1 3	A ...	Mon., " 26	Coventry City	A ...
" " 22	Tottenham Hotspur ...	1 1	H ...	Sat., Oct. 1	Queens Park Rangers ...	2 1	A ...
" " 29	Cardiff City ...	3 3	A ...	" " 8	Southend United	A ...
Sat., Nov. 5	Blackburn Rovers ...	2 0	H ...	" " 15	Fulham	H ...
" " 12	Brentford ...	0 2	A ...	" " 22	Crystal Palace	A ...
" " 19	Hull City	H ...	" " 29	Cardiff City	H ...
" " 26	Sheffield Wednesday ...	0 0	A ...	Sat., Nov. 5	Bristol Rovers	A ...
Sat., Dec. 3	Plymouth Argyle ...	3 1	H ...	" " 12	Leyton Orient ...	5 0	H ...
" " 10	Chesterfield ...	0 1	A ...	" " 19	Leicester City	A ...
" " 17	West Ham United ...	1 0	A ...	" " 26	Bristol Rovers ...	9 0	H ...
" " 24	Sheffield United	H ...	Sat., Dec. 3	Leyton Orient ...	3 2	A ...
Mon., " 26	Southampton ...	1 1	H ...	" " 10	Leicester City	H ...
Tues., " 27	Southampton ...	1 1	A ...	" " 17	Reading ...	3 2	H ...
Sat., " 31	Grimsby Town ...	1 2	A ...	" " 24	Arsenal	A ...
Sat., Jan. 7	F.A. Cup—Round 3	Mon., " 26	Swansea Town ...	1 1	H ...
" " 14	Queens Park Rangers ...	0 0	H ...	Tues., " 27	Swansea Town ...	1 1	H ...
" " 21	Preston North End	A ...	Mon., Apr. 10	Millwall	H ...
" " 28	F.A. Cup—Round 4	Sat., " 15	Fulham	A ...
Sat., Feb. 4	Swansea Town	H ...	" " 22	Crystal Palace	A ...
" " 11	F.A. Cup—Round 5	" " 29	Cardiff City	H ...
" " 18	Leeds United ...	0 2	A ...	Combination Cup			
" " 25	Leicester City ...	1 1	A ...	Sat., Dec. 31	Northampton Town ...	2 1	H ...
Sat., Mar. 4	Bury ...	1 0	H ...	Sat., Jan. 7	Birmingham City ...	3 2	A ...
" " 11	Tottenham Hotspur ...	1 2	A ...	" " 14	Norwich City ...	2 3	A ...
" " 18	Cardiff City ...	3 0	H ...	" " 21	Watford ...	2 0	H ...
" " 25	Blackburn Rovers ...	1 4	A ...	" " 28	Leicester City ...	0 0	A ...
Sat., Apr. 1	Sheffield Wednesday ...	2 1	H ...	Sat., Feb. 4	Birmingham City ...	3 0	H ...
Fri., " 7	Barnsley ...	1 0	H ...	" " 11	Norwich City ...	3 1	H ...
Sat., " 8	Plymouth Argyle ...	1 1	A ...	" " 18	Ipswich Town ...	2 2	H ...
Mon., " 10	Barnsley ...	2 1	A ...	Sat., Mar. 4	Leicester City ...	1 1	H ...
Sat., " 15	Brentford ...	2 1	H ...	" " 11	Northampton Town ...	2 1	A ...
" " 22	Hull City	A ...	" " 18	Watford ...	1 0	A ...
" " 29	Chesterfield ...	1 0	H ...	Fri., " 7	Ipswich Town ...	0 0	A ...
Tues., May 6	Bradford ...	0 1	H ...	Sat., " 8	Coventry City ...	1 0	H ...
					To be arranged	2 2	A ...

LEAGUE TABLES, 1949-50

LEAGUE DIVISION II							FOOTBALL COMBINATION—Section "A"								
	Pld.	Won	Drn.	Lost	For	Agst.	P.		Pld.	Won	Drn.	Lost	For	Agst.	P.
Tottenham Hotspur	7	6	0	1	16	5	12	Birmingham City	6	5	1	0	17	4	11
Queens Park Rangers	8	3	4	1	12	7	10	Fulham	7	5	1	1	17	7	11
Swansea Town	7	4	1	2	11	6	9	Queens Park Rangers	7	4	1	2	12	5	9
Sheffield Wednesday	7	4	1	2	12	7	9	LUTON TOWN	8	3	3	2	10	9	9
West Ham United	7	3	3	1	13	8	9	Swansea Town	7	3	2	2	14	17	8
PRESTON N.E.	8	3	3	2	11	8	9	Arsenal	7	3	2	2	16	9	8
Blackburn Rovers	7	4	1	2	14	13	9	Millwall Athletic	7	3	2	2	17	12	8
Hull City	7	4	1	2	14	13	9	Bristol Rovers	7	3	1	3	11	18	7
Cardiff City	7	3	2	2	7	5	8	Reading	7	2	3	2	12	12	7
Sheffield United	8	2	4	2	10	9	8	Coventry City	7	3	1	3	11	15	7
Chesterfield	7	4	0	3	9	9	8	Cardiff City	7	2	2	3	11	10	6
Grimsby Town	7	3	2	2	10	11	8	Southend United	6	2	2	2	7	9	6
Barnsley	7	2	3	2	12	12	7	Leicester City	7	1	3	3	4	8	5
Brentford	7	3	1	3	10	11	7	Crystal Palace	8	1	2	5	7	17	4
Leicester City	7	2	2	3	12	12	6	Northampton Town	6	0	2	4	10	16	2
Bury	7	2	1	4	14	12	5	Leyton Orient	6	1	0	5	7	15	2
LUTON TOWN	7	1	3	3	6	9	5								
Bradford	7	1	3	3	9	15	5								
Leeds United	8	1	3	4	7	12	5								
Southampton	7	2	1	4	5	10	5								
Coventry City	7	1	2	4	9	14	4								
Plymouth Argyle	7	0	1	6	3	18	1								

Saturday, September 24th, 1949

KICK-OFF 3.15 p.m.

FOOTBALL COMBINATION

LUTON TOWN RESERVES v. ARSENAL RESERVES

Usual Reserve Team Prices of Admission

G. A. WILD & SONS

THE
TOWN'S LEADING SPORTS OUTFITTERS

Fancy Leather Goods Dealers and Saddlers

14, MANCHESTER STREET, LUTON

Also at . . .

'Phone No. 780

103, HIGH STREET NORTH, DUNSTABLE

'Phone No. 275

Suppliers to the Luton Town Football Club

Agents for all the Leading Sports Goods Manufacturers

MANFIELD : ALEX JAMES : SHILLCOCK : EMBEKAY
and COTTON OXFORD FOOTBALL BOOTS

(Large selection of all Boys' sizes in stock)

Goal Nets, Jerseys, Shorts, Hose, Shin Guards etc. etc.

A GREAT VARIETY OF FOOTBALLS FROM SIZES 1-5

We welcome Club enquiries. Please send or call
for our latest Price List of Football Gear etc.

We have a grand selection of **Slazenger's, Dunlop's, Uandi, Gray's, Wisden's**

BADMINTON : SQUASH : HOCKEY : RUGBY : BOXING EQUIPMENT
Buy Early ! !

BRISTLE AND PLASTICENE DART BOARDS

NOW AVAILABLE

Large Ranges of Darts to suit every Player—“BEDFORDIAN” DARTS
and FLIGHTS in Stock, also JIM PIKE and LEO NEWSTEAD Etc.

Ask to see our Super White Flights

❖ TABLE TENNIS TABLES *in Stock*

Also Johnny Leach, Victor Barna, Jack Carrington

TABLE TENNIS BATS and BALLS

❖ ROLLER SKATES *in great variety*

INDOOR GAMES *a speciality*

MONOPOLY, TOTOPOLY, PIT, Etc.

❖ *Agents for Allcocks', Morris's, Lees'* FISHING TACKLE

Travel and Fancy Leather Goods of every description

THE FINEST RANGE IN THE COUNTY