



**Official
Programme
2d.**

Swansea Town A.F.C.

SATURDAY, SEPTEMBER 24th, 1949

SWANSEA T. v. LUTON T.

Kick Off 3.15 p.m.

For Quality and Style ...

MORGAN & LOTT LTD.

HOUSE FURNISHERS

206 HIGH STREET, SWANSEA

Telephone : SWANSEA 2506

FULL SOCCER COVERAGE

BEST FOR FOOTBALL NEWS AND FORECASTS

**SPORTING
RECORD**

The Family All-Sports Weekly, 3d.

<p>Phone : 82122</p> <h2>Elsmore's Radio</h2> <p>91 MANSEL ST. (Nr. Albert Hall) SWANSEA</p> <p>FOR EVERYTHING RADIO AND ELECTRICAL</p> <p>Refrigerators, Washing Machines, Cookers, Kettles, Irons, etc.</p> <p>LATEST RECORDS IN STOCK</p>	<p>TYPEWRITER TECHNICIANS</p> <p>F. C. ROGERS & Co. Ltd.</p> <p>55 WIND ST. SWANSEA</p> <p>Tel. 4636</p> <p>OFFICE EQUIPMENT</p>
<h2>G. Edgar Williams (Builders) Ltd.</h2> <p>BUILDERS & CONTRACTORS</p> <p>WHITE STREET YARD SWANSEA</p> <p>Tel. Swansea 3435</p>	<p>IRONMONGERY AND TOOLS for service and value</p> <h2>Cash Hardware Stores Limited</h2> <p>DILLWYN STREET, SWANSEA</p> <p>Tel. 4842</p>
 <h2>DAN MORGAN</h2> <p>"HIS MASTER'S VOICE" SPECIALISTS</p> <p>RECORDS—RADIOGRAMS</p> <p>16 ST. HELEN'S RD., SWANSEA</p>	<h2>W. J. HOLT</h2> <p>RADIO ELECTRICAL & TELEVISION REPAIRS SERVICES</p> <p>Agent for McMichael, Ultra, G.E.C., Pilot, Marconi, etc. Authorised dealers for Hoover Cleaners and Washing Machines</p> <p>BRYNHYFRYD SQUARE and 23 BRYN-Y-MOR ROAD, SWANSEA</p>
<h2>J. CECIL JONES</h2> <p>MEMORIAL SPECIALIST</p> <p>59 Oxford St. SWANSEA Tel. 5011</p> <p>17 Alfred St. NEATH Tel. 197</p>	<h2>Lloyd's Sales Agency</h2> <p>Specialists in Cafe, Canteen, Hotel, Restaurant, Milk and Snack Bars and Cocktail Bar Equipment</p> <p>99 HIGH STREET, SWANSEA Tel. 55012</p> <p>Distributors for "Minimax" Tea and Coffee Sets and for FROZT-ED-AER Refrigerators</p>

Swansea Town Association F.C.

LIMITED

PRESIDENT : W. CRAVEN LLEWELYN, ESQ.

DIRECTORS :

MESSRS. A. FREEDMAN (CHAIRMAN), D. C. REES, A. ADAMS, B. T. REES, D. J. WEAVER, H. L. SULLIVAN AND D. M. EVANS-BEVAN

SECRETARY/MANAGER : W. McCANDLESS ASSISTANT SECRETARY : R. HARVEY

CLUB NOTES

By Watchman

A MONTH of League football has brought a good return. The Swans are to-day occupants of second place in the Second Division, and it can be claimed that such a creditable position has been the outcome of sound football, with our attack and defence oft-times reaching First Division standard. One has only to recall the calibre of the opposition so far met to realise that there has been no fluke about this rise. Indeed, the Swans have so far played some of the best teams in the division. But the road to success is a long and tortuous one, and a great deal must happen before the championship is decided.

Already we have had our share of injuries and illness, but reserve players who have been called upon have fitted in to the scheme of things splendidly, and there has been no loss of skill. We can with justifiable pride comment on these achievements, the latest of which was at Coventry where the team's victory followed a very fine display of football. Our team is in perfect trim at the moment, their physical fitness being demonstrated by the manner in which they are finishing off their games, for the players appear as fresh at the close as at the beginning.

LUTON'S VISIT

To-day we welcome Luton Town, old Second Division opponents who are now managed by Mr. "Dally" Duncan, for so long a star of the Derby County side.

Whilst we have not fared too well on our visits to the Luton ground, we have invariably had the better of arguments with the Bedfordshire team at the Vetch Field, and hope this afternoon to consolidate our hold on the second position.

Among the Luton players is Aherne, the Eire international who was in the team which met England at Goodison Park in mid-week.

Unfortunately, our reserve team has not found its true form this season, but we hope that soon they will recapture the skill which won them so many points last season.

FOR PERFECT TRAVEL WITH
GUARANTEED COMFORT

MATHIAS LUXURY COACHES LTD.

15 WOODFIELD ST., MORRISTON
SWANSEA

YOU WILL "SCORE" IF
YOU ARE COACHED BY US

Follow the "SWANS" in
**MATHIAS LUXURY
COACHES**

Tel. 71718 SWANSEA Tel. 71718

AFTER THE MATCH VISIT

THE CASTLE CAFE

2 CASTLE SQUARE, SWANSEA

FOR DELICIOUS MEALS AT POPULAR PRICES
MORNING CONTINENTAL COFFEE
LUNCHEONS, TEAS ALSO LATE SUPPERS
OPEN EVERY DAY-8 A.M. TILL 10 P.M.
ICE CREAM A SPECIALITY

ALSO AT THE GRAND
FISH AND CHIPS RESTAURANT
38 SINGLETON STREET, SWANSEA
FOR DELICIOUS FISH AND CHIPS
DINNERS, TEAS, SUPPERS

Atkinson Sports

(N. Atkinson)

26, OXFORD STREET

Late of 31 Oxford Street

SWANSEA

T PANEL FOOTBALLS, SIZE 5, COMPLETE
WITH BEST DUNLOP BLADDER

42/9

Tel. 4647

Telephone 7696

BAXTERS(Swansea)L^{TD.}

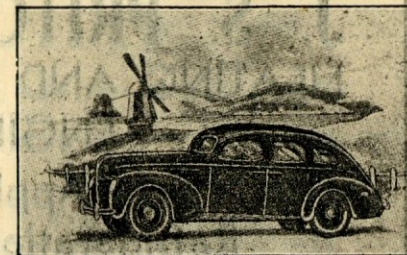
131 WOODFIELD ST., MORRISTON
SWANSEA

Specialists in Equipment for
Caterers
Clubs
Hotels
Institutions and
Shops

RUBBER FLOOR COVERING
EXPERTS

SILVERLINE

FOR INEXPENSIVE CAR HIRE



PHONE: 3055 and 2802

Established 50 years

E. BROOKS

★ BUTCHER ★

Canteens Supplied

WARWICK HOUSE
PICTON PLACE, FFORESTFACH

Tel. SWANSEA 58705

FFORESTFACH BILLIARD HALL

Phone 58689

THE HALL WITH A FRIENDLY ATMOSPHERE

SWANSEA TOWN

Right (White) Left

PARRY (1)

ELWELL (2) KEANE (3)

PAUL (4) WESTON (captain) (5) BURNS (6)

O'DRISCOLL (7) LUCAS (8) RICHARDS (9) SCRINE (10) BEECH (11)

Referee: W. J. Edwards (Yeovil)

Linesmen: T. L. Davies (Ynysir), A. J. Thomas (Cardiff)

WILFRID HARRIS
West End Sports House
58 St. Helen's Road
Telephone 2778

WAUGH (11) TAYLOR (10) MULVANEY (9) ARNISON (8) GLOVER (7)

GARDINER (6) OWEN (5) HALL WATKINS (4)

AHERNE (T.) (3) COOKE (2)

STRETEN (1)

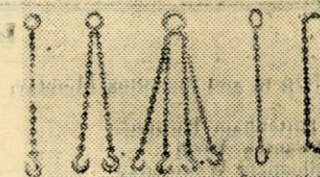
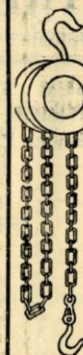
Left Right

LUTON TOWN

MEMBERS OF SWANSEA WELFARE SNOOKER LEAGUE

REFRESHMENT BUFFET (Prop. V. H. V. JAMES)

CHAINS AND PULLEY BLOCKS



TOM SMITH & CLARKE

LIMITED

CHAIN WORKS

New Cut Rd., Swansea Tel. 3106

EXPLOSIVES AGENT FOR
IMPERIAL CHEMICAL INDUSTRIES
Limited Nobel Division

GLYN GRIFFITHS

(of E. H. Griffiths & Sons)

84 SKETTY ROAD - SWANSEA
Glamorganshire Tel. Swansea 56280

EXPLOSIVES AGENCY FOR NEARLY
FIFTY YEARS

'BANK' on a 'CERTAINTY'

of Personal and prompt Service and
Satisfaction by obtaining your Radio
and Electrical Requirements at

"BANBURY'S"

Phone 5251

PARK ST. ST. MARY'S SQ.

Your local 'SOUND' people for
Murphy, Bush, K.B., G.E.C., Etc.

For particulars of Advertising Space
on this Programme
Apply :-

SPORTS PUBLICATIONS

46 WATFORD WAY
LONDON, N.W.4

Telephones: HENdon 1934/3370

Ernest Williams

(Contractors) Ltd.

BUILDING AND CIVIL
ENGINEERING CONTRACTORS

&

E. Edgar Williams & Son

INDUSTRIAL PAINTERS AND
LIGHT CONSTRUCTIONAL WORK

ARGYLE WORKS, RICHARDSON RD.

Phone: Swansea SWANSEA After Hours:
2104 (3 lines) Swansea 55746

BUY YOUR HOME THROUGH

THE SWANSEA IMPERIAL PERMANENT BUILDING SOCIETY

38 WALTER ROAD
SWANSEA

BLACKPOOL ILLUMINATIONS

1949

FRIDAY NIGHT, OCTOBER 14th

Day Excursion to BLACKPOOL
Leaving Swansea (High Street) 10.5 p.m.

Return Fare 30/6 Third Class

For full details see handbill obtainable
at Stations and Agencies.

BOOK EARLY

BRITISH RAILWAYS

J. S. PRITCHARD LTD.

HEATING AND REFRIGERATION ENGINEERS

Gas Appliance and Refrigeration Equipment
68 OXFORD STREET, SWANSEA

Telephone : 2559

LEAGUE TABLE DIVISION II.

(Up to and including Monday, September 19th)

	P.	W.	D.	L.	Goals		Pts.
					F.	A.	
Tottenham Hotspur	8	7	0	1	19	6	14
Swansea Town	8	5	1	2	13	7	11
Sheffield Wednesday	8	5	1	2	14	8	11
West Ham United	8	4	3	1	17	11	11
Hull City	8	5	1	2	18	15	11
Blackburn Rovers	9	5	1	3	18	15	11
Chesterfield	9	5	1	3	10	9	11
Preston North End	9	3	4	2	12	9	10
Queens Park Rangers	9	3	4	2	13	10	10
Barnsley	8	3	3	2	15	13	9
Leicester City	9	3	2	4	16	15	8
Sheffield United	9	2	4	3	11	11	8
Cardiff City	8	3	2	3	9	9	8
Grimsby Town	8	3	2	3	13	15	8
Brentford	9	3	2	4	11	15	8
Southampton	8	3	1	4	7	11	7
Bradford	8	2	3	3	10	15	7
Luton Town	8	1	4	3	7	10	6
Bury	8	2	1	5	15	15	5
Leeds United	9	1	3	5	8	14	5
Coventry City	8	1	2	5	10	16	4
Plymouth Argyle	8	0	1	7	5	22	1

FOR PERSONAL SERVICE
 AND QUALITY

FRED BEER

GRO CER

216 OXFORD ST., SWANSEA

CLIFFORDS

154 WESTERN STREET, SWANSEA

All makes of SEWING MACHINES
 REPAIRED - SOLD - BOUGHT

Also at

7 CWMAYON ROAD, ABERAVON

Telephone : 55298

CATERER

LUNCHES AND TEAS

C. C. JAMES

GOWER INN, PARKMILL
 SWANSEA—Southgate 214

D'AMBROSIO ☆

the other name for QUALITY
 in ICE CREAM

HOSPITAL SQUARE, SWANSEA

Abertawe Building Co.

E. LAMPREY H. STEVENS

BUILDERS AND CONTRACTORS

Painting and Decorating : Sanitary Work

Repairs of all kinds promptly executed

Rear 134/137 St. Helen's Ave., Swansea

Terms : Monthly Telephone : Swansea 4759

SWAN SPORTS

6a QUAY PARADE

Opp. Weavers

SWANSEA

Specialize in Sports Equipment

Suppliers to all Leading Clubs

H. GOODING

GLASS MERCHANT

All types of Glass supplied

139 HIGH STREET, SWANSEA

Tel. Swansea 3329

A. P. BARKER

PORTABLE BUILDING AND
 JOINERY MANUFACTURER

13 GARDEN STREET

SWANSEA

Ministry of Works Regd. No. 24/156341/I.C.

HALF-TIME SCORES

A	Bradford v. Cardiff City
B	Bury v. Southampton
C	Chesterfield v. Blackburn Rovers
D	Grimsby Town v. Sheffield United
E	Leeds United v. Coventry
F	Leicester City v. Tottenham Hotspur
G	Plymouth Argyle v. Brentford
H	Preston North End v. Barnsley
K	Queens Park Rangers v. West Ham United
L	Sheffield Wednesday v. Hull City
M	Newport County v. Millwall
N	Wolves v. Huddersfield

NEXT HOME MATCHES

Monday, September 26th. K.O. 5.30 p.m. Welsh League

EBBW VALE

Thursday, September 29th. K.O. 5.30 p.m. Welsh League Challenge Cup

LLANELLY v. MERTHYR

Final Tie

Saturday, October 1st. K.O. 3.15 p.m. Combination

BIRMINGHAM

Swansea Printers

FOR

High-class Printing

Trevor Lewis

—of course!

Building and Civil Engineers

Griffith Davies & Co. Ltd.

PAXTON YARD, SWANSEA

TELEPHONE : 2146

S. STRIDE

WATCHMAKER, JEWELLER
AND SILVERSMITH

Distinctive Jewellery

4 & 5 PLAZA CINEMA BUILDINGS
SWANSEA, GLAM.

PHONE: SWANSEA 4553

FIXTURES

1949 HOME MATCHES				1949 AWAY MATCHES					
		F.	A.			F.	A.		
Aug. 20	Preston N.E.	Eng.	2	1	Aug. 20	Queens P. R.	Comb	2	1
25	Cwmpark	Welsh	2	4	22	Sheffield U.	Eng.	1	1
27	Leicester	Comb.	0	0	24	Fulham	Comb.	2	6
29	Gwynfi	Welsh	5	1	27	Cardiff C.	Eng.	0	1
Sept. 1	Sheffield U.	Eng.	1	0	29	North'pton	Comb.	3	0
3	Millwall	Comb.	4	0	Sept. 3	Leeds U.	Eng.	2	1
8	North'pton	Comb.	3	3	3	Cwmpark	Welsh	2	2
10	South'pton	Eng.	4	0	5	Aberaman	Welsh	3	2
12	Senghenydd	Welsh	5	0	7	Grimsby T.	Eng.	1	2
15	Fulham	Comb.	1	3	10	Arsenal	Comb.	0	7
17	Luton T.	Comb.	1	1	10	Haver'dwest	Welsh	1	4
22	Arsenal	Comb.	17	Coventry C.	Eng.	2	1
24	Luton T.	Eng.	17	Senghenydd	Welsh	2	3
26	Ebbw Vale	Welsh	28	Birmingham	Comb.
Oct. 1	Birmingham	Comb.	Oct. 1	Barnsley	Eng.
6	Bargoed	Welsh	1	Ebbw Vale	Welsh
8	Blackburn R.	Eng.	8	Leicester C.	Comb.
13	Aberaman	Welsh	8	Milford	Welsh
15	Southend U.	Comb.	15	Brentford	Eng.
22	Hull City	Eng.	19	Cardiff C.	Welsh
24	Ton Pentre	Welsh	Oct. 22	Reading	Comb.
29	Leyton O.	Comb.	29	Sheffield W.	Eng.
Nov. 5	Plym'th A.	Eng.	29	Gwynfi	Welsh
Nov. 12	Bristol R.	Comb.	Nov. 5	Crystal P.	Comb.
19	Bradford	Eng.	12	Chesterfield	Eng.
26	(1)Crystal P.	Comb.	19	Cardiff C.	Comb.
Dec. 1	Merthyr	Welsh	26	Leicester C.	Eng.
3	Bury	Eng.	Dec. 3	Bristol R.	Comb.
10	(2)Cardiff C.	Comb.	10	Tottenham	Eng.
15	Newport C.	Welsh	17	Preston N.E.	Eng.
17	Queens P. R.	Comb.	24	Merthyr	Welsh
24	Cardiff City	Eng.	26	West Ham	Eng.
26	Coventry C.	Comb.	26	Llanelly	Welsh
27	West Ham	Eng.	27	Luton T.	Comb.
31	Leeds U.	Eng.	31	Bristol C.	Comb.C.
						Bargoed	Welsh	-	-
						Penrhiwc'ber	Welsh	-	-
						Ton Pentre	Welsh	-	-

Arnold Engineering & Construction Co. Ltd.

Constructional Engineers : Civil Engineering Contractors

19, MANSEL STREET, SWANSEA Telephone: 3659

West Wales Branch Office: PEMBROKE DOCK. Telephone: Pembroke Dock 219