

PRICE 3D

PRESTON

North End

FOOTBALL CLUB LTD

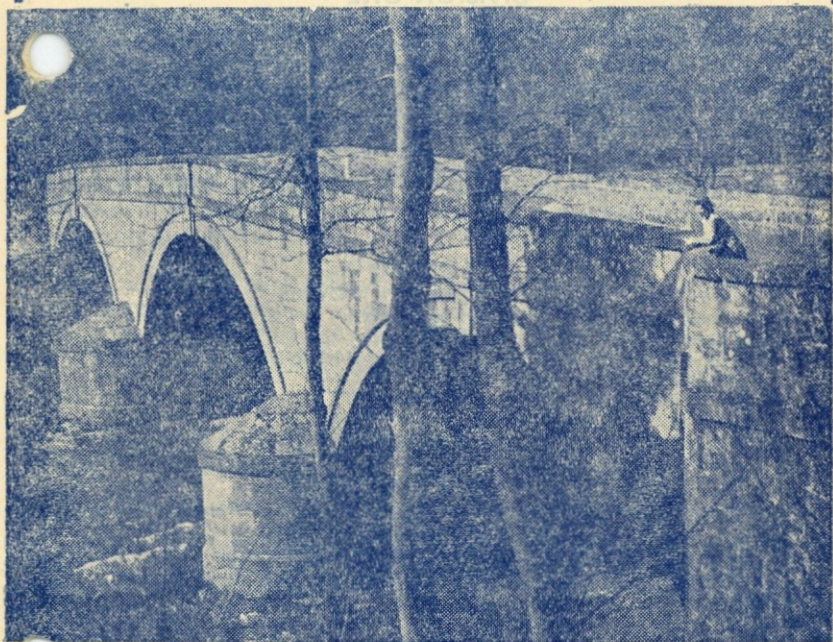


OFFICIAL PROGRAMME

No. 30.

SATURDAY, JANUARY 21st, 1950

*There'll always be an England . . .*



VER ALLEN, NORTHUMBERLAND.

and

**HARRISON'S** *Bread*

# EMPIRE HOTEL

TITHEBARN STREET PRESTON

(Next to the Ribbie Bus Station)

## C. & S. X-L Ales

*On Draught and in Bottle*

Manager : MICHAEL KEEGAN

### KEY TO HALF-TIME SCORE BOARD

SATURDAY, JANUARY 21st, 1950

#### DIVISION ONE

- A—ARSENAL v. BOLTON WANDERERS
- B—ASTON VILLA v. MIDDLESBROUGH
- C—BURNLEY v. WEST BROMWICH ALBION
- D—CHARLTON ATHLETIC v. BLACKPOOL
- E—CHELSEA v. FULHAM
- F—LIVERPOOL v. BIRMINGHAM CITY
- G—MANCHESTER CITY v. NEWCASTLE UNITED
- H—PORTSMOUTH v. HUDDERSFIELD TOWN
- J—STOKE CITY v. MANCHESTER UNITED
- K—SUNDERLAND v. DERBY COUNTY
- L—WOLVES v. EVERTON

#### DIVISION TWO

- A—BRADFORD v. BLACKBURN ROVERS
- B—BURY v. TOTTENHAM HOTSPUR
- C—CHESTERFIELD v. BRENTFORD
- D—GRIMSBY TOWN v. WEST HAM UNITED
- E—LEEDS UNITED v. SOUTHAMPTON
- F—LEICESTER CITY v. CARDIFF CITY
- G—PLYMOUTH ARGYLE v. HULL CITY
- H—QUEEN'S PARK R. v. BARNSELY
- J—SHEFFIELD UNITED v. SHEFFIELD WEDNESDAY
- K—SWANSEA TOWN v. COVENTRY CITY

YOU CAN RELY ON THE

# Lancashire Evening Post

## LAST FOOTBALL

COMPLETE  
RESULTS

### EDITION

EXPERT  
REPORTS

## OFFICIAL JOURNAL of the Preston North End F.C. Ltd

Registered Office : Deepdale, Preston

Telephone 3818

Chairman : JAS. I. TAYLOR, Esq. (Life Member)

Vice-Chairman : N. BUCK, Esq.

Directors :

THE CHAIRMAN  
VICE-CHAIRMAN  
J. GREEN, Esq.

E. BRADSHAW, Esq.  
J. H. INGHAM, Esq.

W. CROSS, Esq.  
R. SMITH, Esq.  
C. L. J. HOLT, C.B.E., M.A.

### Club Notes

#### A NEW PLAYER . . . .

Within the next two weeks we are expecting the arrival of a new-comer to English Football in Joe Marston from Sydney, N.S.W., Australia.

A Lancashire correspondent from that part of the world strongly recommended him, an opinion which was endorsed by his Club and we are giving the Player his chance in English football.

He is a right full back, splendidly built for the job, being 5 ft. 11 ins., over 12 stones in weight, 22 years of age. He has been playing for 6 seasons in top grade football in Australia and was the regular choice for his State team and in matches against foreign visiting teams.

We trust that he will have a very successful career in English football.

## INSURANCE

### Garratt, Son & Flowerdew, Ltd

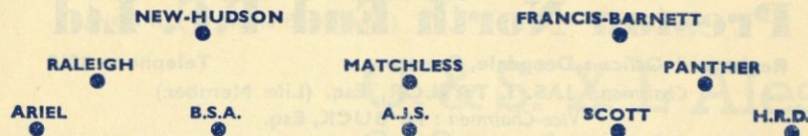
INCORPORATED INSURANCE BROKERS

85 FISHERGATE, PRESTON Telephone No. 2626 (2 lines)

Branch Office : Globe Chambers, Cedar Square, BLACKPOOL. Tel. : Blackpool 22794

Insurance Brokers to The Preston North End Football Club  
WE TRANSACT EVERY KIND OF INSURANCE and WELCOME YOUR ENQUIRIES

## STAN MARKS LIMITED



**A GOOD TEAM** to choose your Motor Cycle, Auto-Cycle or Bicycle from. Make **YOUR Goal STAN MARKS LTD., PRESTON**

### PEN PICTURES OF LUTON TOWN TEAM . . . .

**B. Streten (goal)** : Born Gillingham and was England's amateur goalkeeper in all the Amateur internationals in season 1946-47. This season at Maine Road he was England's goalkeeper against Ireland, to gain his first professional cap. Only missed six league games last season.

**W. Cooke (right back)** : Born Chesterfield and was previously with the Bourne-mouth club. After being a wartime guest with the Hatters, he signed in December 1945. Missed only five league games last season.

**T. Aherne (left back)** : Signed from Belfast Celtic last March and made three league appearances for Luton until the end of the season. Has played for Eire in every International game this season.

**C. Watkins (right half)** : Joined the Hatters from Glasgow Rangers and was in the Rangers team when they met the Russian Dynamos. Came to Luton in September 1948 and had twenty-seven league games last season.

**L. Hall (centre half)** : Born at St. Albans and played with the local club prior to joining Luton Town as a professional. After absence was recalled to the present side for the F.A. Cup tie on January 7th. Missed only half a dozen league games last season.

**S. Owen (left half)** : Formerly with Birmingham City, has been the regular centre half this season but is equally at home in the wing half position. Had twenty games last season in the league.

### "SPORTS GOODS FOR EVERY SPORT"

We proudly present THE **"TOM FINNEY"** FOOTBALL BOOT  
THE BOOT FOR THE PLAYER

SOLE AGENTS FOR PRESTON & DISTRICT-

## PRESTON SPORTS DEPOT

Tel. 3793

141 FRIARGATE (Manager—Jack Drysdale)

## Ever since 1922 b.B.C.!!!

Before Broadcasting Commenced

You could rely on

# Wilkinsons for Wireless

The "Record Shop," 47 Fishergate, Preston  
TEL. 3562

### PEN PICTURES OF LUTON TOWN TEAM (continued) . . . .

**D. Gardiner (left half)** : The present captain of the side and the longest serving player in it. Is a Scot and was signed from Scottish Junior circles. Missed five league games last term.

**A. Glover (outside right)** : In September last year Luton paid a big fee to Bradford Park Avenue for this player who has since been a regular member of the side.

**T. Kiernan (inside right)** : Probably the best known of the Luton players, was formerly with Glasgow Celtic and Stoke City. In season 1946-47 was in the Scottish League side against the Football League at Hampden Park. Played in twenty-three league games last season.

**W. Shanks (centre forward)** : Was recommended by Joe Payne, then with Chelsea and after a month's trial was engaged as a professional. Played six times for the Hatters last season.

**W. Waugh (outside left)** : Born Edinburgh, signed for Luton in September, 1944, and has been a regular first team member ever since, missing only four games last season.

**I. Hughes (goal)** : Joined his present club from Llandudno last April with several Welsh Amateur international caps to his credit.

## SCOUT MOTOR SERVICES LTD.

LUXURIOUS SALOON COACHES  
FOR  
PRIVATE HIRE

STARCHOUSE SQUARE GARAGE  
PRESTON

Telephone : 3051/2

For All Sports

**MERIGOLDS**  
of **PRESTON**

Phone 3216

**Club Notes—continued—**

THIS afternoon we have Luton Town as our visitors for the very first time, and in search of valuable points to lift them from their precarious position of fourth from the foot of League Two. They have won only one game on tour this season and have scored less goals on visiting grounds than any other club in the Division.

Founded in 1885, the Bedfordshire club was formed from the Luton Excelsior and Luton Wanderers clubs. They formerly played for three seasons in the Second Division of the League from 1897-1900, then returned to Southern League circles. They rejoined the Football League when Division Three South was formed in 1920 and were champions in 1936-37.

Our Reserves will need to be on their mettle at West Brom. this afternoon where they encounter the most improved team in the Central League. In their last 16 games, West Brom Reserves have won 13 and lost 3, goals for 29, against 12, this following an opening to the season of only 3 wins in the first eleven games.

REMOVALS

**A. BOAST & CO.**

REMOVALS

FOR

**R** EASONABLE  
E LIABLE  
R EMOVALS

LARGE OR SMALL VANS ALWAYS AVAILABLE.

LONG DISTANCE A SPECIALITY

Let us quote you. All enquiries receive prompt attention.

**EMPIRE GARAGE, DERBY STREET, PRESTON**

PETROL, OILS AND SERVICING. Phone 4609.

**Musical Programme**

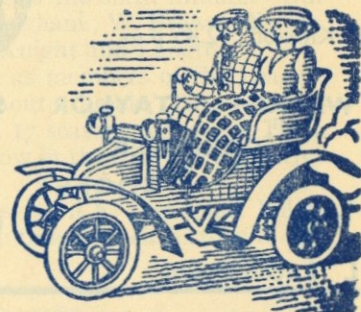
1. FOREVER AND FOREVER ..... Russ Morgan Orchestra
2. LOOK FOR THE SILVER LINING ..... Peter Yorke Orchestra
3. LEICESTER SQUARE RAG ..... Harry Roy Orchestra
4. SERENADE ..... Victor Silvester Orchestra
5. MARCHE MILITAIRE ..... Liverpool Philharmonic Orchestra
6. OLD TIME WALTZ ..... Harry Davidson Orchestra
7. TEDDY BEARS PICNIC ..... Reginald Foort Organ
8. LIBERTY BELL ..... Coldstream Guards Band
9. MAYBE SOMEDAY ..... Victor Silvester Orchestra
10. GIPSY TANGO ..... Harry Davidson Orchestra

INTERVAL

11. SEMPER FIDELIS ..... Royal Marines Band
12. HIAWATHA ..... Coldstream Guards

Loudspeaker and Amplifier maintained and operated by  
**GEO. WILKINSON (Wireless) Ltd., 47 FISHERGATE, PRESTON,**  
from whom the above records can be obtained.

—but  
times  
have  
changed



Maybe—in the very early days of motoring—the service facilities offered to car owners weren't any too clever. Today, if your Vauxhall car isn't running as sweetly as she should, you can rely on our servicing facilities to put matters right. And when we use the word rely, we mean it.

**BARTON'S**



TELEPHONE—PRESTON 2867

# John Turner & Sons (Preston) Ltd

Brickmakers, Builders and Contractors  
WILLIAM HENRY STREET, PRESTON

Makers of Ribbleton Briquettes—Obtainable through your Coal Merchant

Contractors to Preston North End Pavilion Extension, etc.

R Preston North End

White shirts, blue knickers L

		1			
		NEWLANDS			
	2		3		
	WALTON		CUNNINGHAM		
4		5	6		
HORTON		WATERS	FORBES		
7	8	9	10	11	
FINNEY	RAMSCAR	MORRISON	KNIGHT	ANDERS	

Referee :

B. M. GRIFFITHS  
(Newport)

Kick-off : 2.45 p.m.



Linesmen :

Red Stripe—C. L. Coup  
Blue Stripe—J. Forshaw

WAUGH	TAYLOR	SHANKS	KIERNAN	GLOVER
11	10	9	8	7
GARDINER	OWEN	WATKINS		
6	5	4		
COOKE	HUGHES	AHERNE		
3	1	2		

L Luton Town

R

## — ALWAYS ON TOP — ROBINSON'S CRUSOE RUM

BOTTLED & GUARANTEED  
by

T. L. ROBINSON, LTD  
23 FRIARGATE PRESTON

AVAILABLE AT BRANCHES THROUGHOUT LANCASHIRE

TEL. 522 LANCASTER

# PRIM-PREST Laundry Service

Central Laundry (Lancaster) Ltd.  
Caton Road, LANCASTER

BE ASSURED OF FIRST-CLASS WORK AT ECONOMICAL CHARGES

PROMPT COLLECTION & DELIVERY IN PRESTON

ASK FOR OUR VAN TO CALL

FANFARE . . . .

Next Saturday here at Deepdale we have Queens Park Rangers as visitors in a friendly game, kick off 3-0 p.m. When they visited us last September in the League game (their very first at Deepdale) they gave us a close call as far as goals were concerned, Morrison scoring winner of five with under fifteen minutes left for play. Until then the Londoners were the only unbeaten side left in Division Two, but have slumped to the danger zone since, winning however at Luton last Saturday.

Three days after our game with Queens Park Rangers we met Luton Town for the first time in a League match at Kenilworth Road and forced a 1-1 draw, Morrison scoring in the sixth minute. Our team then was:—Gooch; Walton, Cunningham; W. Brown, Waters, Robertson; Finney, Horton, Morrison, Knight and Langton.

Luton Town are in their 26th season as members of the League, the present season being their 23rd without a break. Three seasons in Division Two just around 1900, then 17 seasons in League Three South from 1920, then promotion and now in their sixth consecutive season in Division Two.

In 1932-33 season they had their best spell as Cup giant killers progressing to the 6th round for the only time in their history to fall to the eventual winners, Everton.

## ROWNTREE'S RESTAURANT and SNACK BAR

(LATE BENNETT AND JOHNSTON)

### 53 Fishergate, Preston

(ONE MINUTE FROM THE STATION)

LICENSED RESTAURANT

Morning Coffee from 9 a.m. . Luncheons . Afternoon and High Teas  
Suppers . Open until 10.45 p.m.

SPECIAL TERMS FOR PARTIES

'PHONE : 4411 PRESTON

# MEARS

FOR MODERN  
FURNITURE

25, FRIARGATE PRESTON

CARPETS  
LINOLEUM  
BEDDING  
ETC.

We invite you to  
inspect our  
Showrooms

## OUR PORTRAIT GALLERY — No. 15 — WILLIE CUNNINGHAM

A doughty and dour Scot as is suggested on the field, Willie Cunningham came to Deepdale in late June of last year, being signed from Airdrieonians with whom he spent three years after eight months with Dunfermline—where he had Willie Forbes as a team-mate, and where he too was a wing half back.

A Fifeshire laddie, Willie was born at the picturesque sounding place of "Hill of Beath" and played in local schoolboy football with the county school team. He gained three schoolboy caps and also played in the Fife Juvenile Cup Final and then for ten years he mixed business with soccer—if you look at it that way, for Willie was by now a Fifeshire coal miner deep down in the bowels of the earth—emerging to engage in his weekly Scottish football.

He made his North End debut in the second game of the present season versus Grimsby in late August. Ever present since then except for two games absent through injury, and to date he has made 23 league appearances and the two Cup games with Watford.

Willie married a Fifeshire lassie and has a brother at present playing football in Scottish Junior circles.

## TIMPSON'S "KNOCK-OUT" FOOTBALL BOOTS

now in good supply

These famous football boots, so popular before the war, are once more available in sufficient quantities to meet the big demand. Built for speed, comfort, and accurate kick!

at the **TIMPSON**  
Shoe Shop

32 MARKET PLACE, PRESTON

FULL SOCCER COVERAGE

Best for Football News and Forecasts

# SPORTING RECORD

The Family All-Sports Weekly. 3d.



Photo.  
"Lancashire Evening Post"

TELEPHONE 3071

DAY AND NIGHT SERVICE

## TAXIS

## PRIVATE HIRE CARS

Special Quotations for PARTIES TO AWAY MATCHES

## J. J. MILLER & SONS

1 GARSTANG ROAD, PRESTON

The Latest WOLSELEY and HUMBER LIMOUSINES for Weddings

Prices to suit everyone

PRIVATE DAIMLER SALOON AMBULANCE for hire

## FIXTURES and RESULTS 1949-50

FIRST TEAM			CENTRAL LEAGUE		
1949.	F	A	1949.	F	A
Aug. 20—Swansea Town.....a	1	2	Aug. 20—Leeds United.....h	2	0
.. 24—Grimsby Town.....h	2	0	.. 27—Bolton Wanderers...a	1	0
.. 27—Leeds United.....h	1	1	.. 30—Burnley.....a	2	4
.. 31—Grimsby Town.....a	3	1	Sept. 3—Derby County.....h	2	0
Sept. 3—Southampton.....a	0	1	.. 7—Burnley.....h	1	1
.. 7—Queens Park R'gers a	0	0	.. 10—Barnsley.....a	0	3
.. 10—Coventry.....h	1	1	.. 17—West Brom. Albion...h	1	0
.. 14—Queens Park R'gers h	3	2	.. 21—Liverpool.....h	1	1
.. 17—Luton Town.....a	1	1	.. 24—Manchester United...a	5	0
.. 24—Barnsley.....h	1	1	Oct. 1—Sheffield United...h	1	0
Oct. 1—West Ham United...a	3	0	.. 8—Blackpool.....a	1	0
.. 8—Brentford.....h	2	0	.. 15—Everton.....h	0	2
.. 15—Hull City.....h	2	4	.. 22—Huddersfield Town...a	1	0
.. 22—Sheffield Wednesdayh	0	1	.. 29—Bury.....h	2	1
.. 29—Plymouth Argyle...a	0	1	Nov. 5—Wolverhampton W. a	0	3
Nov. 5—Chesterfield.....h	0	0	.. 12—Chesterfield...h	1	1
.. 12—Bradford.....h	2	1	.. 19—Aston Villa.....a	3	1
.. 19—Leicester City.....h	2	1	.. 26—Manchester City.....h	2	1
.. 26—(1) Bury.....h	1	1	Dec. 3—Sheffield Wednesdaya	2	4
Dec. 3—Tottenham Hotspur h	1	3	.. 10—Newcastle United...h	2	1
.. 10—(2) Cardiff City.....a	2	3	.. 17—Leeds United.....h	0	2
.. 17—Swansea Town.....h	2	1	.. 24—Bolton Wanderers...h	0	3
.. 24—Leeds United.....a	1	3	.. 26—Blackburn Rovers...a	2	1
.. 26—Sheffield United.....h	4	1	.. 27—Blackburn Rovers...h	3	4
.. 27—Sheffield United.....a	0	1	.. 31—Derby County.....a	2	2
.. 31—Southampton.....h	0	3	1950.		
1950.			Jan. 7—Stoke City.....h	7	1
Jan. 7—(3) Watford.....a	2	2	.. 14—Barnsley.....h	1	1
.. 11—Watford.....h	0	1	.. 21—West Brom. Albion...a		
.. 14—Coventry City.....a	0	0	.. 28—.....h		
.. 21—Luton Town.....h			Feb. 4—Manchester United...h		
.. 28—(4).....h			.. 11—.....h		
Feb. 4—Barnsley.....a			.. 18—Sheffield United.....a		
.. 11—(5).....h			.. 25—Blackpool.....h		
.. 18—West Ham United...h			Mar. 4—Everton.....a		
.. 25—Brentford.....a			.. 11—Huddersfield Town...h		
Mar. 4—(6) Hull City.....h			.. 18—Bury.....a		
.. 11—Sheffield Wednesdaya			.. 25—Wolverhampton W. h		
.. 18—Plymouth Argyle...h			April 1—Chesterfield.....a		
.. 25—(C.F.) Chesterfield...a			.. 7—Liverpool.....h		
April 1—Bury.....h			.. 8—Aston Villa.....h		
.. 7—Blackburn Rovers...a			.. 10—Stoke City.....h		
.. 8—Tottenham Hotspur a			.. 15—Manchester City.....a		
.. 10—Blackburn Rovers...h			.. 22—Sheffield Wednesdayh		
.. 15—Bradford.....h			.. 29—Newcastle United...a		
.. 22—Leicester City.....a			May 6—.....h		
.. 29—(F.) Cardiff City...h					
May 6—.....h					

## BRITISH RAILWAYS

### EVENING TRIPS to Blackpool 2/-

SATURDAYS	Jan.		February	
	28th	4th	11th	
Preston dep. ...	5.44	5.43	5.51	p.m.
Return same evening from Blackpool (C) (N)	11.15	11.15	—	p.m.
	—	—	10.55	p.m.

### SPECIAL EXCURSION TO **BRADFORD 6/9**

SUNDAY, 12th February

PRESTON depart **10.24 a.m.**  
RETURN from  
**BRADFORD (Exchange) at 7.50 p.m.**  
Also Booking to BOLTON, MANCHESTER,  
ROCHDALE, SOWERBY BRIDGE and  
HALIFAX.

DAILY by  
ANY TRAIN  
from 9.30 a.m.

### WINTER CHEAP TICKETS To and from PRESTON

Return same  
day by  
any train

ADLINGTON*	1/6	CHURCHTOWN	1/9	LONGTON BRIDGE	-/18
BAMBER BRIDGE	-/6	CROSSENS	1/8	LOSTOCK HALL	-/6
BLACKBURN	1/5	HESKETH PARK	1/10	MILL HILL	1/4
BLACKROD*	1/9	HOGHTON	-/11	PRESTON JCT.	-/5
BOURN*	2/7	HORWICH†	1/11	SOUTHPORT (Chapel St) †2/-	
CHORLEY*	1/2	LEYLAND*	-/9	SOUTHPORT (S. Lukes) †1/11	

\*Available from 9.0 a.m. on Sundays. †No bookings on Sundays. ‡Available by 9.28 a.m. train ex Preston on weekdays.

Fares shown are Third Class, First Class tickets issued at appropriate fares.

FULL DETAILS FROM STATIONS OFFICES AND AGENCIES

## Next Home Game :

Saturday, January 28th, 1950

Kick-off : 3 p.m.

Friendly Game :

## Preston North End

VERSUS

## QUEEN'S PARK RANGERS

# Victoria & Station Hotel, Preston

PRESTON'S PREMIER HOTEL      OPPOSITE RAILWAY STATION  
FULLY LICENSED

Bedrooms with Running Hot and Cold Water.      Football enthusiasts specially catered for.

**C. & S. FAMOUS "X.L." ALES** on draught and in bottle

BANQUETS FROM 10 TO 250 IN PRIVATE ROOMS A SPECIALITY

\*Phones : Manager } 4632 Private Branch  
Office } Exchange

Visitors : 378011

RESIDENT MANAGER : HUGH CATTRALL

LEAGUE—DIVISION II

	P.	W.	D.	L.	Goals :		Pts.
					F.	A.	
Tottenham .....	26	20	4	2	60	20	44
Sheffield Wed. ....	25	13	8	4	46	31	34
Hull City .....	26	15	3	8	50	47	33
Sheffield Utd. ....	27	9	12	6	37	38	30
Bury .....	26	12	5	9	47	36	29
Southampton .....	25	10	9	6	38	30	29
Leeds United .....	27	10	9	8	32	29	29
West Ham .....	26	9	9	8	35	32	27
Preston N. E. ....	27	9	8	10	35	33	26
Brentford .....	27	9	8	10	25	31	26
Barnsley .....	26	8	9	9	43	42	25
Bwansa .....	26	10	5	11	35	37	25
Cardiff City .....	25	10	5	10	25	30	25
Grimsby Town .....	26	9	6	11	50	51	24
Chesterfield .....	27	9	6	12	25	32	24
Blackburn .....	27	10	3	14	36	41	23
Leicester City .....	27	6	10	11	36	46	22
Queens Park .....	27	7	8	12	28	35	22
Luton Town .....	26	5	11	10	25	38	21
Plymouth A. ....	26	6	8	12	35	47	20
Bradford .....	26	7	6	13	38	50	20
Coventry City .....	25	5	8	12	31	40	18

CENTRAL LEAGUE

	P.	W.	D.	L.	Goals :		Pts.
					F.	A.	
Burnley .....	26	15	8	3	57	33	38
Blackpool .....	26	13	10	3	53	20	36
Wolves .....	27	15	5	7	54	22	35
West Brom. A. ....	27	16	2	9	43	28	34
North End .....	27	13	6	8	45	38	32
Aston Villa .....	26	11	7	8	34	31	29
Everton .....	26	9	11	6	30	25	29
Bolton Wand. ....	26	12	5	9	40	38	29
Sheffield Wed. ....	27	12	5	10	34	35	29
Liverpool .....	27	11	5	11	38	42	27
Derby County .....	28	10	7	11	37	40	27
Huddersfield .....	26	9	8	9	35	31	26
Blackburn Rov. ....	26	11	3	12	31	49	25
Sheffield United ..	26	8	8	10	37	31	24
Newcastle United ..	27	13	7	7	38	22	23
Manchester City .....	26	8	6	12	30	34	22
Barnsley .....	26	7	7	13	36	35	21
Manchester Utd. ....	28	8	5	15	43	48	21
Leeds United .....	27	8	4	15	33	30	20
Stoke City .....	27	6	7	14	30	29	19
Bury .....	27	5	6	16	28	16	16
Chesterfield .....	26	4	7	15	27	58	15



**MORRIS - WOLSELEY - M.G.  
RILEY - MORRIS COMMERCIAL**

*A specialised Depot for the sale and  
service of Nuffield Products at—*

**PRESTON**  
CORPORATION STREET

\*Phone 4247 (6 lines)

**BLACKBURN**  
SUDELL CROSS

\*Phone 7116 (three lines)

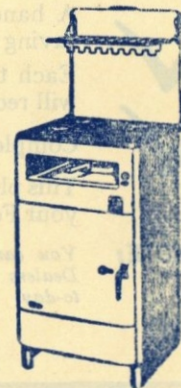
LEARN TO FLY THE LOXHAM WAY

**CUT YOUR COOKING  
COSTS BY 20%.**



The latest 1430/40 series "New World" Gas Cookers not only ensure the housewife of better cooking results, but lower gas bills because four therms do the work of five.

Available in a choice of three oven sizes—14 in., 16 in. and 18 in., and three colour finishes—all cream, grey and cream, and green and cream, from 1/6 per week.



Call and see the many types which we can now deliver and fix from stock.

**NORTH WESTERN GAS BOARD**  
PRESTON UNDERTAKING

Showrooms : FISHERGATE

Tel. 3255-6



---

---

**Special**  
**FOR FORD OWNERS!**  
*The Ford*  
**MAKE SURE**  
*service*

**COME TO US FOR—**



A handy book of Vouchers at a low, money-saving fixed price—

Each time you exchange a Voucher your Ford will receive—

Complete lubrication, adjustment and inspection.

This plan for *Regular* attention will "Make Sure" your Ford is always in perfect running condition.

**NOTE:** *You can use your Voucher Book at any Main Ford Dealers in the Country—ask us for complete details to-day.*

**BRADSHAW'S**  
**MOTOR HOUSE LTD.**  
MAIN Ford DISTRIBUTORS  
TEL NO 4083. MARSH LANE. PRESTON.