



THE
LUTON TOWN FOOTBALL
AND ATHLETIC CO
LTD.

OFFICIAL
JOURNAL

PRICE
TWO PENCE



FOOTBALL LEAGUE—DIVISION II

SATURDAY, 4th MARCH, 1950

LUTON TOWN v. BURY

“TRUE - FORM”

The Town's Leading Shoe Store

32, GEORGE STREET

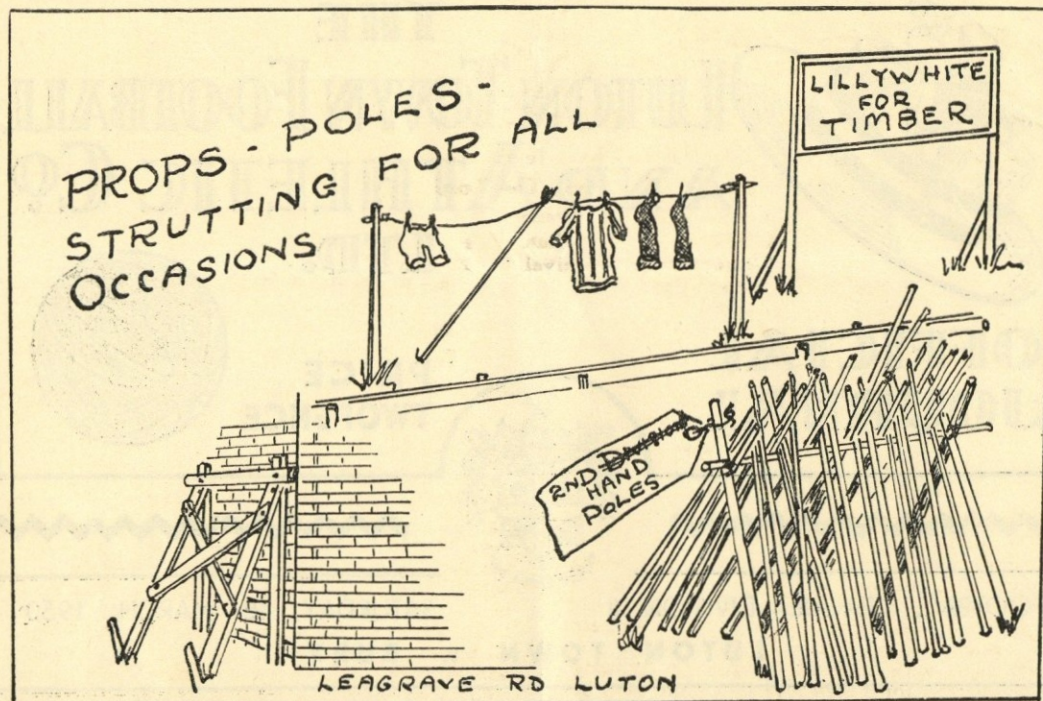
FOR SHOES OF

QUALITY ★ CHARACTER ★ RELIABILITY

The
Brand



of
Quality



LUTON BOBBERS STAND CLUB *Telephone 2566*

The winning number of the Penny-on-the-Ball Ticket will be announced over the loud speakers at the interval. The person holding

the winning ticket can go to the rear of the Main Stand after the game and for 3d. purchase the ball from Mr. J. Collier.

To all

Members of the Bobbers Stand Club

PLEASE NOTE it is now time

for you to

RENEW YOUR MEMBERSHIP

SO PLEASE SEND YOUR 1/2 ALONG TO

The Secretary, Bobbers Stand Club, Beech Hill Path, Luton

LUTON
FOOTBALL AND



TOWN
ATHLETIC CO.

Telephone No. 3151.

LIMITED.

President: Chas. Jeyes, Esq., C.A.

Vice-President: The Rt. Hon. The Lord Luke of Pavenham

Directors:

Chairman: Chas. Jeyes, Esq., C.A.

Vice-Chairman: Percival G. Mitchell, Esq.

Frank J. Andrews, Esq.

Horace S. Hewson, Esq.

E. Hugh Woods, Esq.

A. F. England, Esq.

Henry Richardson, Esq.

Philip W. Wright, Esq.

Secretary: Mr. Philip Coley.

Honorary Medical Officer: E. J. Crarer, Esq., M.B., Ch.B.

Honorary Solicitors: Messrs Machin & Co., 17-19, George Street West, Luton.

CLUB NOTES

WE extend a warm welcome this afternoon to the Officials and Players of the Bury Football Club. The "Shakers" have been doing very well lately and now have an outside chance of promotion, although they dropped a valuable point at home last Saturday when Coventry City held them to a goalless draw. Bury will be very keen therefore to put matters right with themselves again by winning their game today for if they lose this game with us their chances of promotion this season will be very remote unless the Clubs above them have a bad spell. Bury have so far this season won four times away from home—at Leicester 2-0; at Bradford 2-1; at Coventry 2-1; and at Swansea 2-1, quite a creditable performance. Let us hope they are not able to include Luton's name in this string of scalps!

Although our lads played quite well last Saturday, at Leicester, they were not able to bring back with them any of the spoils. It is a very strange coincidence but quite often a team is having a bad time and yet when they play the "Hatters" seem to rise above themselves and play a very good game. Last Saturday, at Leicester, was no exception and we met quite a different team in every respect from the one which played down here in the Friendly Match, a month ago. It was practically the same team on paper but there the similarity ended. The game started with all the thrills one could wish but after about ten minutes Leicester began to take the upper hand, and then when they had scored their third goal the game seemed to be lost as far as we were concerned. Then suddenly our lads took the initiative and for the last twenty minutes simply bombarded the Leicester goal, but were able only once to get the ball into the net from a lovely header by Charlie Watkins. Leicester were very glad when the final whistle went, for if the game had gone on much longer we almost certainly would have scored again, so persistent was the pressure from our lads. Both at Leeds (where we again lost by the odd goal) and at Leicester the remark was made that we are definitely in our wrong position in the League Table with such a team. If only our good approach work could be finished off with a goal we would be at the other end of the Table, but time after time it is that very last kick or pass which negatives all the previous good work.

We have been searching for some considerable time for a centre forward capable of adding the finishing touch to our midfield work but not until last Thursday were our efforts successful. Then we signed Jimmy Jinks from Fulham, a player whom many of you will remember playing down here as centre forward for Millwall and who has found the net a few times on his visits here. We all fervently hope he has not lost this propensity and we wish him a very happy time in the Luton colours, as well as a successful one. Jimmy has been filling the bill very capably at Fulham, while Rowley has been on the injured list, so he comes here with plenty of experience in the centre forward position.

The "Stiffs" went down very badly at Coventry on Thursday last when they lost to the "Bantams" by five goals to one. The conditions were truly shocking, ankle deep mud and driving rain, and these suited the bigger and heavier and more experienced Coventry side. Several good chances on our part were not taken simply because when the forward was right through the ball stuck in the mud and by the time the player had come back to retrieve it a defender had been able to get back into position and get in his tackle. Coventry deserved to win although not by such a big margin, but if a shot by Peter Small which all say had crossed the line had been allowed, when the score was three goals to one, then a different result might have been the outcome for our lads were showing signs of getting on top. It is strange that we did so well in the Combination League but in the Combination Cup nothing seems to have gone right.

We are still receiving applications every day for tickets for the Tottenham v. Luton match at White Hart Lane on Saturday next. It is very nice to feel that our supporters are still taking such an interest despite our poor showing lately, but unfortunately we are not able to help them. The visiting club for League matches does not receive an allocation of tickets as in Cup Ties and so it is quite useless applying to Kenilworth Road for any. We are very sorry about this for we realise it is much better for a visiting team to enter the field knowing a number of their own supporters are present, but we cannot do anything about it here. The only thing to do it to apply direct to the home club in each instance.

For SUITS, OVERCOATS, RAINCOATS and UNDERWEAR
OF QUALITY

YOU SHOULD VISIT

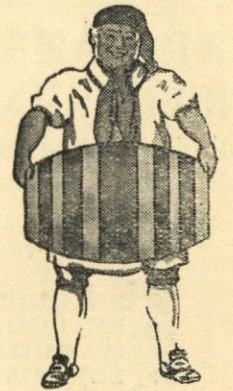
**MEN'S
WEAR**

MARES

**BOY'S
WEAR**

CHARLES MARES LTD., 65-67, George Street, LUTON

You, too, will prefer
J.W. GREEN'S
Quality Ales



J. W. GREEN LTD., THE BREWERY, LUTON.

TELEPHONE: LUTON 3131.

DAILY DELIVERIES
IN ALL DISTRICTS

**RANDALL &
WHITING LTD.**

WHOLESALE
AND RETAIL
MILK
DISTRIBUTORS

Pasteurised and T.T.

HEAD OFFICE:
125, NORTH ST., LUTON

Telephone: Luton 599

DAIRY:
HAVELOCK RD., LUTON

*Most Up-to-Date Equipment
in the County*

We cordially invite our Customers
to come and see our methods

'Phone: LUTON 1961 Proprietor: R. HARRIS

'Rons'
Gentlemen's
Hairdresser

**6, MILL STREET
LUTON
BEDS.**

Saloon Service
Ground Floor

Appointments First Floor

LUTON TOWN

Shirts White
Knickers Black
Stockings Black with White Tops

2
Aherne, T.
Right Back

4
Morton
Right Half

7
Glover
Outside Right

8
Kiernan
Inside Right

Referee—
Mr. R. J. LEAFE
(Nottingham)

11
Bellis
Outside Left

10
Bodle
Inside Left

6
Bardsley
Left Half

3
Griffiths, G.
Left Back

Hughes
Goal

5
Owen
Centre Half

9
Jinks
Centre



9
Massart
Centre

5
Hart
Centre Half

Grieves
Goal

BURY
Shirts White with Blue Collars
Knickers Blue
Stockings Blue with White Tops

Football League—Division II

3
Cooke
Left Back

6
Gardiner
Left Half

10
Stobbart
Inside Left

11
Wyldes
Outside Left

Linesmen—
Blue Flag: Mr. W. J. H. GREGORY
(Hounslow)
Red Flag: Mr. A. L. SIMMONS
(Bexley Heath)

8
Worthington
Inside Right

7
Hazlett
Outside Right

4
Whitworth
Right Half

2
Fairclough
Right Back

Kick - Off 3.15 p.m.

SPECTATORS ARE ASKED NOT TO CROSS THE PLAYING FIELD AFTER THE MATCH

**GLAZING CONTRACTORS
LEADED LIGHT MAKERS**

**PLATE
GLASS**
For All Trades

MIRRORS. To any shape or
design.

RE-SILVERING. Old Mirrors
as good as NEW.

*Decorative Art in Wallpapers
Quality Paints of All Kinds*

**CHARLES BIRD
& SONS, LTD.**

Collington Street, Luton

Telephones: 1255-1256

HARRY CANHAM & SON

*Export Packers
Export Leatherboard Post Boxes
Cardboard Box, Packing Case
Ply Box & Crate Manufacturers*

GROVE ROAD, LUTON

TELEPHONE 458

**W. CHAMBERLAIN
& Co.**

Telephone: LUTON 329
106, DUNSTABLE ROAD, LUTON

IRONMONGERY &
GARDEN REQUISITES
BRUSHES & BROOMS
for Home and Factory
PAINTS & DISTEMPERS
OILS, WALLPAPER Etc.
as available

YOUR KIND ENQUIRIES INVITED

YOUR WINNING GOAL

FOR BEST QUALITY

RADIO, TELEVISION & ALL ELECTRICAL SUPPLIES

IS

A. T. SNOWDEN'S

171, DUNSTABLE ROAD

AND

24, MILL STREET, LUTON

'PHONE: LUTON 1496

AGENTS
for
BUSH
COSSOR
FERRANTI
H. M. V.
PHILIPS
PHILCO
PILOT
ULTRA

RELIABLE
RADIO
TELEVISION
ELECTRICAL
REFRIGERATION
INSTALLATIONS
AND REPAIRS
CARRIED
OUT BY
EXPERTS

**HELEY'S
RESTAURANT**

MILL STREET, Next to the Palace Cinema

**Special FISH & CHIP
DINNERS & TEAS**

served on match days

PRICE including
TEA, BREAD AND BUTTER **1/9**

Seating Accommodation
90

Proprietor:
A. E. Heley

WILLIAMS & RICHARDSON

Radio, Television & Electrical Engineers

Agents for—

- ✦ MURPHY
- ✦ H.M.V.
- ✦ PHILLIPS
- ✦ PHILCO
- ✦ MARCONI
- ✦ FERGUSON

174, Biscot Road & 17, DURHAM ROAD LUTON

'Phone: 593 and 2012

TODAY'S HALF-TIME SCORES

NOTE. The letter in the Programme corresponds with the letter on the Board—thus A 0-1 means that the first-named club has scored 0 and their opponents 1.

FIRST LIST

F.A. CUP—Round Six

A ARSENAL	LEEDS UNITED
B CHELSEA	MANCH. UN.
C DERBY CO'NTY	EVERTON
D LIVERPOOL	BLACKPOOL

LEAGUE GAMES

E STOKE CITY	MANCH. CITY
F SUNDERLAND	NEWCASTLE U.
G WEST BROM.	WOLVES
H BIRMINGHAM	HUDDERSFIELD
K BURNLEY	FULHAM
L PRESTON N.E.	HULL CITY
M QUEEN'S P.R.	WEDNESDAY
N SHEFFIELD UN	CHESTERFIELD

Park Square

Park Street

For

Quality Hardware
Paints and Decorators' Sundries
Crocery and Kitchen Needs

A. J. WILSHER

64 LANGLEY STREET
'PHONE LUTON 3924
(2 mins. Park Square)

OPEN SATURDAYS

PERSONAL ATTENTION

HERE →

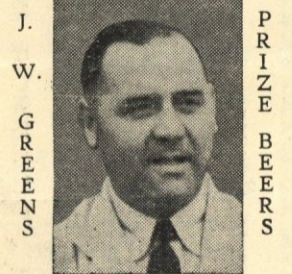
Cumberland Street

Wilsher's Store

Warden Tavern

2 1/2 miles out of Luton on main Bedford Road

Proprietor: Tom Hodgson
Ex-Captain, Luton Town F.C.



Luncheon
Wedding Receptions : Social Functions : Evening Parties
Fully Licensed Large Car Park

Do you view your printing with complete satisfaction?
IF NOT, TRY

E. A.

ALLEN & SON (Luton) LTD.

Printers of Quality

424, DUNSTABLE ROAD
'Phone LUTON 1626

SECOND LIST

A BARNLEY	LEICESTER C.
B COVENTRY C.	TOTTENHAM
C GRIMSBY T.	PLYMOUTH AR.
D SOUTHAMPTON	CARDIFF C.
E SWANSEA T	BRENTFORD
F WEST HAM U.	BRADFORD
G MILLWALL A.	BOURNEM'UTH
H NEWPORT CO'	PORT VALE
K NORTHANTS	EXETER CITY
L ALDERSHOT T.	READING
M BRIGHTON & H.	SOUTHEND U.
N BRISTOL CITY	NOTTS. CO'TY

THIRD LIST

A TORQUAY U.	WATFORD
B WALSALL	BRISTOL ROV.
C NORWICH C.	IPSWICH T.
D NOTTS. FOR.	LEYTON O.
E SWINDON T.	CRYSTAL PAL.
F DONCASTER R.	CREWE ALEX.
G GATESHEAD	TRANMERE R.
H HALIFAX T.	ACCRINGTON
K HARTLEPOOLS	YORK CITY
L BRADF'D CITY	CARLISLE UN.
M CHESTER	ROTHERHAM
N DARLINGTON	OLDHAM A.

Motorists!

Fit

TRIPLEX SAFETY GLASS

Consult

OGDEN & CLEAVER LTD.

(GLASS DEPT.)

Stuart Street, Luton
'PHONE 746-7

BEDFORDSHIRE Building Society

2 1/4 % p.a.

Income Tax Paid

INVESTMENTS ACCEPTED

6d. - £5,000

16, King Street LUTON

Branch Manager Telephone
C. L. ROBSON 4577

FIXTURES, 1949-50

FIRST XI Division II		F. A.	
		1948/49	
Sat., Aug. 20	West Ham United ...	0 1 H 2 2	
Wed., " 24	Coventry City ...	2 0 H 2 0	
Sat., " 27	Sheffield United A 2 2	
Mon., " 29	Coventry City ...	0 2 A 0 1	
Sat., Sept. 3	Grimsby Town ...	1 1 H 0 0	
Wed., " 7	Bradford ...	1 4 A 0 1	
Sat., " 10	Queens Park Rangers	3 0 A 0 3	
" " 17	Preston North End H 1 1	
" " 24	Swansea Town A 0 0	
Sat., Oct. 1	Leeds United ...	0 0 H 1 0	
" " 8	Leicester City ...	1 1 H 1 0	
" " 15	Bury ...	1 3 A 2 5	
" " 22	Tottenham Hotspur	1 1 H 1 1	
" " 29	Cardiff City ...	3 3 A 0 0	
Sat., Nov. 5	Blackburn Rovers ...	2 0 H 5 2	
" " 12	Brentford ...	0 2 A 0 1	
" " 19	Hull City H 0 3	
" " 26	Sheffield Wednesday ...	0 0 A 1 1	
Sat., Dec. 3	Plymouth Argyle ...	3 1 H 1 1	
" " 10	Chesterfield ...	0 1 A 1 0	
" " 17	West Ham United ...	1 0 A 0 0	
" " 24	Sheffield United H 1 3	
Mon., " 26	Southampton ...	1 1 H 1 1	
Tues., " 27	Southampton ...	1 1 A 1 2	
Sat., " 31	Grimsby Town ...	1 2 A 1 6	
Sat., Jan. 7	Grimsby T. (F.A. Cup—3)	3 4	
" " 14	Queens Park Rangers	0 0 H 1 2	
" " 21	Preston North End A 1 0	
" " 28	F.A. Cup—Round 4	
Sat., Feb. 4	Swansea Town H 1 2	
" " 11	F.A. Cup—Round 5	
" " 18	Leeds United ...	0 2 A 1 2	
" " 25	Leicester City ...	1 1 A 2 3	
Sat., Mar. 4	Bury ...	1 0 H	
" " 11	Tottenham Hotspur ...	1 2 A	
" " 18	Cardiff City ...	3 0 H	
" " 25	Blackburn Rovers ...	1 4 A	
Sat., Apr. 1	Sheffield Wednesday	2 1 H	
Fri., " 7	Barnley ...	1 0 H	
Sat., " 8	Plymouth Argyle ...	1 1 A	
Mon., " 10	Barnley ...	2 1 A	
Sat., " 15	Brentford ...	2 1 H	
" " 22	Hull City A	
" " 29	Chesterfield ...	1 0 H	
Sat., May 6	Bradford ...	0 1 H	

RESERVE FIXTURES Football Combination F. A.

RESERVE FIXTURES Football Combination		F. A.	
		1948/49	
Sat., Aug. 20	Reading ...	3 0 A 0 0	
Mon., " 22	Milwall A 1 3	
Sat., " 27	Southend United H 0 0	
Wed., " 31	Coventry City H 4 1	
Sat., Sept. 3	Northampton Town ...	3 2 A 3 3	
Wed., " 7	Queens Park Rangers	5 2 H 1 0	
Sat., " 10	Northampton Town	5 2 H 1 0	
Wed., " 14	Birmingham City ...	2 0 H 0 2	
Sat., " 17	Swansea Town ...	0 3 A 1 1	
Wed., " 21	Birmingham City ...	3 1 A 2 4	
Sat., " 24	Arsenal A 2 0	
Mon., " 26	Coventry City A 1 1	
Sat., Oct. 1	Queens Park Rangers ...	2 1 A 3 2	
" " 8	Southend United A 1 0	
" " 15	Fulham H 3 1	
" " 22	Crystal Palace A 0 1	
" " 29	Cardiff City H 0 0	
Sat., Nov. 5	Bristol Rovers A 0 0	
" " 12	Leyton Orient ...	5 0 H 2 1	
" " 19	Leicester City A 0 3	
" " 26	Bristol Rovers ...	9 0 H 4 5	
Sat., Dec. 3	Leyton Orient ...	3 2 A 2 3	
" " 10	Leicester City H 0 3	
" " 17	Reading ...	3 2 H 4 1	
Mon., " 26	Arsenal A 4 0	
Tues., " 27	Swansea Town ...	1 1 H 2 2	
Mon., Apr. 10	Milwall H	
Sat., " 15	Fulham A	
" " 22	Crystal Palace H	
" " 29	Cardiff City A	
Combination Cup			
Sat., Dec. 31	Northampton Town	2 1 H 0 3	
Sat., Jan. 7	Birmingham City ...	3 2 A 2 5	
" " 14	Norwich City ...	2 3 A 1 3	
" " 21	Watford ...	2 0 H 5 0	
" " 28	
Sat., Feb. 4	Leicester City ...	0 0 A 1 1	
" " 11	Birmingham City ...	3 0 H 3 2	
" " 18	Norwich City ...	3 1 H 2 4	
" " 25	Ipswich Town ...	2 2 H 0 0	
Thur., Mar. 2	Coventry City ...	2 2 A 1 5	
Sat., " 11	Leicester City ...	1 1 H	
" " 18	
" " 25	Northampton Town ...	2 1 A	
Sat., Apr. 1	Watford ...	1 0 A	
Fri., " 7	Ipswich Town ...	0 0 A	
Sat., " 8	Coventry City ...	1 0 H	

LEAGUE TABLES, 1949-50

LEAGUE DIVISION II										
	Pld.	Won	Drn.	Lost	For	Agst.	P.			
Tottenham Hotspur	30	23	4	3	69	24	50			
Sheffield United	32	13	12	7	46	41	38			
Hull City	30	16	5	9	55	51	37			
Sheffield Wednesday	29	13	10	6	50	40	36			
Leeds United	31	13	9	9	39	31	35			
Southampton	30	12	10	8	45	57	34			
BURY	30	13	6	11	51	39	32			
Preston North End	31	11	8	12	38	37	30			
Brentford	31	10	10	11	31	37	30			
Barnley	30	10	9	11	51	48	29			
West Ham United	29	10	9	10	37	36	29			
Swansea Town	30	12	5	13	42	42	29			
Cardiff City	29	12	5	12	28	33	29			
Leicester City	32	9	11	12	42	50	29			
Grimsby Town	29	11	6	12	54	54	28			
Blackburn Rovers	31	11	6	14	41	44	28			
Chesterfield	30	10	7	13	29	35	27			
Coventry City	30	7	10	13	37	46	24			
Bradford	30	8	7	15	44	59	23			
Plymouth Argyle	31	6	11	14	36	51	23			
LUTON TOWN	30	6	11	13	30	45	23			
Queens Park Rangers	31	7	9	15	30	45	23			
COMBINATION CUP—Section III										
	Pld.	Won	Drn.	Lost	For	Agst.	P.			
Norwich City	8	5	1	2	16	10	11			
Leicester City	7	3	3	1	13	7	9			
Ipswich Town	7	3	3	1	10	9	9			
Birmingham City	9	3	3	3	14	14	9			
Coventry City	9	3	2	4	16	11	8			
Northampton Town	8	3	1	4	12	7	7			
LUTON TOWN	9	2	2	5	15	23	6			
Watford	7	2	1	4	9	19	5			

NEXT MATCHES

Wednesday, March 8th, 1950

London Mid-Week League : Kick-Off 3.15 p.m.

Luton Town "A"

v.

Watford "A"

Admission—Stand only, 1/-

Saturday, 11th March, 1950

Football Combination Cup : Kick-Off 3.15 p.m.

Luton Town Reserves

v.

Leicester City Res.

Usual Reserve Team Prices of Admission

G. A. WILD & SONS

THE
TOWN'S LEADING SPORTS OUTFITTERS

Fancy Leather Goods Dealers and Saddlers

14, MANCHESTER STREET, LUTON

Also at 'Phone No. 780
103, HIGH STREET NORTH, DUNSTABLE
'Phone No. 275

Suppliers to the Luton Town Football Club

Agents for all the Leading Sports Goods Manufacturers

Buy your Tennis and Cricket Requisites early ! !

Our Latest Price List of Summer Sports Equipment available
on application :: :: :: We welcome Club enquiries

Full range of all
ATHLETIC EQUIPMENT in stock

RUNNING, CROSS COUNTRY and
CYCLING SHOES in all sizes

ATHLETIC SHORTS AND VESTS (Round Neck and $\frac{1}{2}$ Sleeves)

TRACK SUITS in all sizes now available

Agents for "B.S.A.," "WEBLEY," "DIANA" Air Rifles and Ancillary Equipment

❖ Slazengers Archery Equipment in stock

Tennis Rackets repaired and restrung on the premises at short notice by Specialists

BRISTLE AND PLASTICINE DART BOARDS

NOW AVAILABLE

Large Ranges of Darts to suit every Player — "BEDFORDIAN" DARTS
and FLIGHTS in Stock, also JIM PIKE and LEO NEWSTEAD Etc.

Ask to see our Super White Flights

❖ TABLE TENNIS TABLES in Stock
Also Johnny Leach, Victor Barna, Jack Carrington
TABLE TENNIS BATS and BALLS

❖ ROLLER SKATES in great variety
INDOOR GAMES a speciality
MONOPOLY, TOTOPOLY, PIT, Etc.

❖ BILLIARD TABLES recovered and repaired at short notice by our experienced men at reasonable prices

Travel and Fancy Leather Goods of every description

THE FINEST RANGE IN THE COUNTY