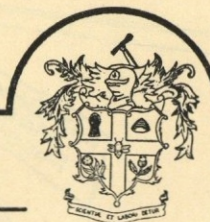
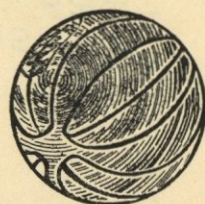


THE LUTON TOWN FOOTBALL AND ATHLETIC CO LTD.

**OFFICIAL
JOURNAL**

**PRICE
TWO PENCE**



FOOTBALL LEAGUE—DIVISION II
LUTON TOWN v. SHEFFIELD WEDNESDAY

SATURDAY, 1st APRIL, 1950

“TRUE - FORM”

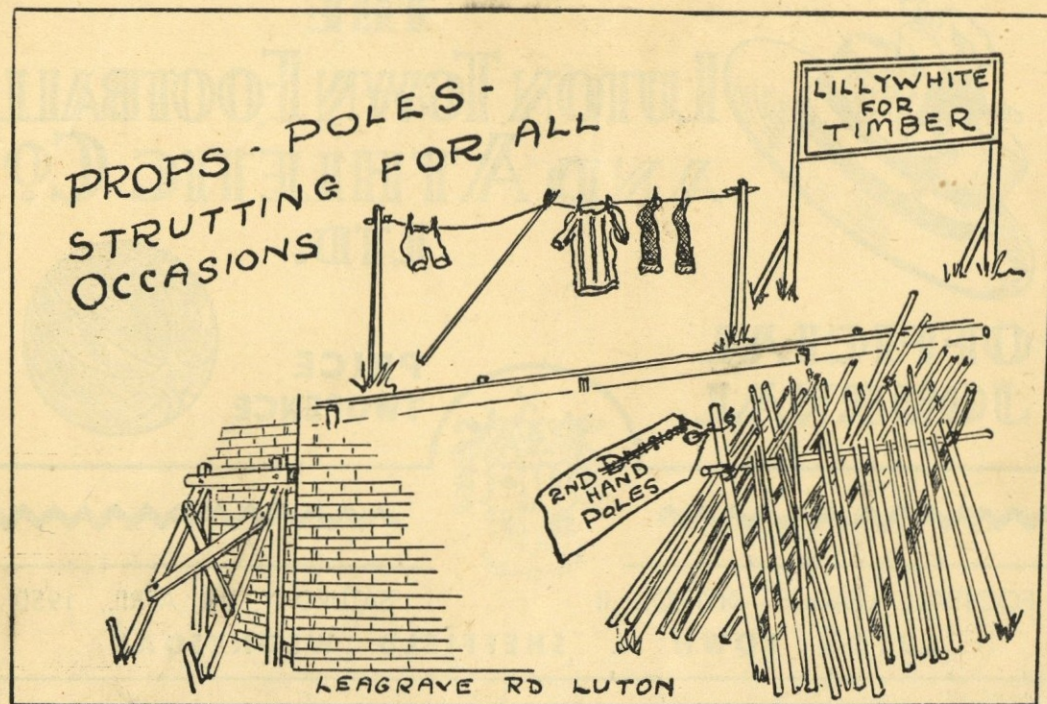
The Town's Leading Shoe Store

32, GEORGE STREET

FOR SHOES OF

QUALITY ★ CHARACTER ★ RELIABILITY





LUTON BOBBERS STAND CLUB Telephone 2566

The winning number of the Penny-on-the Ball Ticket will be announced over the loud speakers at the interval. The person holding the winning ticket can go to the rear of the Main Stand after the game and for 3d. purchase the ball from Mr. J. Collier.

The ticket number for the ball on Saturday, March 18th, 1950, was **76936** and the supporter who had this number was—

Mr. H. G. PERRY,
The Green, Cheddington, Leighton Buzzard.

To all
Members of the Bobbers Stand Club

**PLEASE NOTE it is now time
for you to
RENEW YOUR MEMBERSHIP**

SO PLEASE SEND YOUR 1/2 ALONG TO

The Secretary, Bobbers Stand Club, Beech Hill Path, Luton

LUTON
FOOTBALL AND



TOWN
ATHLETIC CO.

Telephone No. 3151.

LIMITED.

President: Chas. Jeyes, Esq., C.A.

Vice-President: The Rt. Hon. The Lord Luke of Pavenham

Directors:

Chairman: Chas. Jeyes, Esq., C.A.

Vice-Chairman: Percival G. Mitchell, Esq.

Frank J. Andrews, Esq.

Horace S. Hewson, Esq.

E. Hugh Woods, Esq.

A. F. England, Esq.

Henry Richardson, Esq.

Philip W. Wright, Esq.

Secretary: Mr. Philip Coley.

Team Manager: Mr. Dally Duncan

Honorary Medical Officer: E. J. Crarer, Esq., M.B., Ch.B.

Honorary Solicitors: Messrs Machin & Co., 17-19, George Street West, Luton.

CLUB NOTES

ANOTHER hard struggle lies before us today, for our opponents, Sheffield Wednesday, are on the brink of promotion and the points from this match are just as important to them as they are for us, although for quite a different reason. The Wednesday's splendid win at home last Saturday, when they beat Leeds United by five goals to two has undoubtedly put them right on their toes and in view of our poor record to date must be expecting to continue the good work in their thrilling fight for promotion. Only three points behind the Club lying second in the Table at so late a stage in the season, especially with three games in hand, will make them fight every inch of the way and so our lads have no easy task in front of them this afternoon. On the other hand the better our opponents the better our team plays and so we can expect to see a very interesting game here today.

Our visit to Blackburn, last Saturday, earned us a very valuable point, but we would not have been granted it if the game had been judged on territorial advantage. In the first half there was only one team in it and we have to thank our heroic defence for being able to turn round at half time on level terms. In the second half our forwards came more into the game and in fact would have won if two chances had been accepted. However we came away with a point in the end and with that, feel very satisfied.

On Thursday afternoon we received a telegram from Jimmy Jinks to say that he had contracted flu and was confined to bed. This news set the manager thinking for though there were so many things he could do the point he had to decide was which one would be the most effective. As you will see on the centre page he has decided to bring in Jack Taylor and move George Stobbart back to the centre forward position. This will enable Taylor to once more show that, despite his recent stomach trouble, he has not lost any of the ability he was so clearly showing this time last year, and we all wish him a successful return to the senior side. Doug. Gardiner is appearing in the unusual position (for him) of outside left, but in view of

the very good game he had at Northampton last Saturday in that position the manager felt justified in giving Doug. further opportunities to show his worth on the wing. When he was moved to that position against West Ham, last December through injury he showed quite an aptitude for the job and so we hope he will show us this afternoon that he is just as much at home on the wing as in the wing half position. Bobby Wyldes has therefore been dropped for this game but he has done extremely well while in the first team and a period in the reserves in order to conserve his experience gained with the seniors will not do him any harm. We are hoping next season that he will be with us on a full time basis for we feel he would greatly benefit by the extra practice he would then receive.

Do not forget that our next match at Kenilworth Road, which will be on Friday next, will be a League II fixture with Barnsley. The time of the kick-off has been arranged for 11 o'clock as our lads have to catch the 4.30 p.m. train that same day from Paddington for their long trip to Plymouth. The 3.30 p.m. train from Paddington they were hoping to catch, which arrived at Plymouth at 9 p.m., has been taken off and so now they have to catch the later train which does not arrive at its destination until ten minutes before midnight. We play Plymouth Argyle on the Saturday afternoon and then on Easter Sunday the party will leave Plymouth on the 9.30 a.m. train and will not arrive at Sheffield (where they are staying on the Sunday night) until 6.29 p.m. They will then proceed to Barnsley on Easter Monday in time for an afternoon kick-off, and the party will arrive back in Luton at 12.36 on Tuesday (mid-day). On Good Friday the Reserves are playing at Ipswich so that the Manager will have a problem to face should there be any injuries incurred by the first team, for anyone playing at Ipswich wanted for the senior side will have a long trail to get down to Plymouth in time for the match. It will be seen that Easter this year is going to be a very busy one for the players but it is just one of those things in this great game. We would certainly have tried to arrange it a little bit better if we had been responsible for the fixtures but we appreciate it is a difficult task to please all Clubs at the same time.

For SUITS, OVERCOATS, RAINCOATS and UNDERWEAR
OF QUALITY

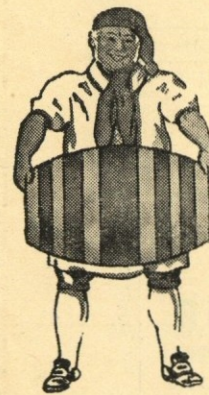
YOU SHOULD VISIT

**MEN'S
WEAR**

MARES

**BOY'S
WEAR**

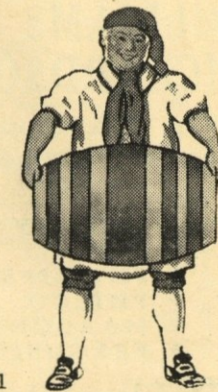
CHARLES MARES LTD., 65-67, George Street, LUTON



J.W-GREEN'S

Quality

Ales and Stouts



J. W. GREEN LTD., The Brewery, Luton Telephone: Luton 3131

DAILY DELIVERIES
IN ALL DISTRICTS

**RANDALL &
WHITING LTD.**

WHOLESALE
AND RETAIL
MILK
DISTRIBUTORS
Pasteurised and T.T.

HEAD OFFICE:
125, NORTH ST., LUTON
Telephone: Luton 599

DAIRY:
HAVELOCK RD., LUTON

*Most Up-to-Date Equipment
in the County*

We cordially invite our Customers
to come and see our methods

'Phone: LUTON 1961 Proprietor: R. HARRIS

'Rons'
**Gentlemen's
Hairdresser**

**6, MILL STREET
LUTON
BEDS.**

Saloon Service
Ground Floor

Appointments First Floor

LUTON TOWN

Shirts White
Knickers Black
Stockings Black with White Tops

Hughes Goal
2 Cooke Right Back
4 Watkins Right Half
7 Glover Outside Right
8 Kiernan Inside Right

Referee—
Mr. G. L. ILIFFE (Leicester)

11 Rickett Outside Left
10 Tomlinson Inside Left
6 Witcomb Left Half
3 Bannister Left Back

SHEFFIELD WEDNESDAY

Shirts Blue and White Stripes
Knickers Black
Stockings Blue and White Hoops

SPECTATORS ARE ASKED NOT TO CROSS THE PLAYING FIELD AFTER THE MATCH

Owen or Hall Centre Half
5 Stobart Centre



9 McJarrow Centre
5 Packard Centre Half

McIntosh Goal

Football League—Division II

3 Aherne, T. Left Back
6 Shanks Left Half
10 Taylor Inside Left
11 Gardiner Outside Left

Linesmen—
Blue Flag: Mr. J. B. KITTEL (London)
Red Flag: Mr. S. K. PROWSE (London)

8 Henry Inside Right
7 Marriott Outside Right
4 Gannon Right Half
2 Kenny Right Back

Kick-Off 3 p.m.

**GLAZING CONTRACTORS
LEADED LIGHT MAKERS**

**PLATE
GLASS**
For All Trades

MIRRORS. To any shape or design.

RE-SILVERING. Old Mirrors as good as NEW.

*Decorative Art in Wallpapers
Quality Paints of All Kinds*

CHARLES BIRD & SONS, LTD.

Collington Street, Luton
Telephones: 1255-1256

HARRY CANHAM & SON

*Export Packers
Export Leatherboard Post Boxes
Cardboard Box, Packing Case
Ply Box & Crate Manufacturers*
GROVE ROAD, LUTON
TELEPHONE 458

W. CHAMBERLAIN & Co.

Telephone: LUTON 329
106, DUNSTABLE ROAD, LUTON

IRONMONGERY & GARDEN REQUISITES
BRUSHES & BROOMS for Home and Factory
PAINTS & DISTEMPERS
OILS, WALLPAPER Etc.
as available

YOUR KIND ENQUIRIES INVITED

RADIO, TELEVISION & ALL ELECTRICAL SUPPLIES
IS
A. T. SNOWDEN'S
171, DUNSTABLE ROAD
AND
24, MILL STREET, LUTON
'PHONE: LUTON 1496

YOUR WINNING GOAL

FOR BEST QUALITY

TELEVISION & ALL ELECTRICAL SUPPLIES

IS

A. T. SNOWDEN'S

171, DUNSTABLE ROAD
AND

24, MILL STREET, LUTON

'PHONE: LUTON 1496

RELIABLE
RADIO
TELEVISION
ELECTRICAL
REFRIGERATION
INSTALLATIONS
AND REPAIRS
CARRIED
OUT BY
EXPERTS

**HELEY'S
RESTAURANT**

MILL STREET, Next to the Palace Cinema

**Special FISH & CHIP
DINNERS & TEAS**

served on match days

PRICE including
TEA, BREAD AND BUTTER **1/9**

Seating Accommodation
90

Proprietor:
A. E. Heley

WILLIAMS & RICHARDSON

Radio, Television & Electrical Engineers

Agents for—

- MURPHY
H.M.V.
PHILLIPS
PHILCO
MARCONI
FERGUSON

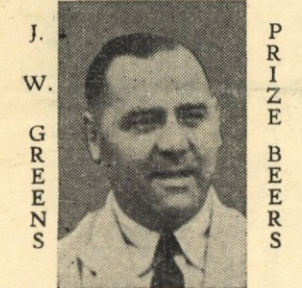
174, Biscot Road & 17, DURHAM ROAD LUTON

Phone: 593 and 2012

Warden Tavern

2 1/2 miles out of Luton on main Bedford Road

Proprietor: Tom Hodgson Ex-Captain, Luton Town F.C.



Luncheons, Wedding Receptions, Social Functions, Evening Parties, Fully Licensed, Large Car Park

Do you view your printing with complete satisfaction?



IF NOT, TRY E. A. ALLEN & SON (Luton) LTD.

Printers of Quality 424, DUNSTABLE ROAD Phone LUTON 1626

TODAY'S HALF-TIME SCORES

NOTE. The letter in the Programme corresponds with the letter on the Board—thus A 0-1 means that the first-named club has scored 0 and their opponents 1.

FIRST LIST

Table listing football teams and their opponents for the first half: A ARSENAL, B BIRMINGHAM, C BOLTON WAN, D SUNDERLAND, E WEST BROM., F LIVERPOOL, G MANCH. UN., H STOKE CITY, K BURNLEY, L CHELSEA, M DERBY CO'NTY, N WEST HAM U.

SECOND LIST

Table listing football teams and their opponents for the second half: A BARNSLEY, B COVENTRY C., C GRIMSBY T., D SHEFFIELD UN., E SOUTHAMPTON, F SWANSEA T., G LEEDS UNITED, H PRESTON N.E., K QUEEN'S P.R., L ALDERSHOT T., M BRIGHTON & H., N BRISTOL CITY.

THIRD LIST

Table listing football teams and their opponents for the third half: A TORQUAY U., B WALSALL, C NORWICH C., D NOTTS. FOR., E SWINDON T., F MILLWALL A., G NEWPORT CO', H NORTHANTS, K DONCASTER R., L HARTLEPOOLS, M N. BRIGHTON, N ROCHDALE.

Advertisement for A. J. WILSHER, Quality Hardware, Paints and Decorators' Sundries, Crockery and Kitchen Needs, located at 64 LANGLEY STREET, LUTON.

Advertisement for Motorists! Fit TRIPLEX SAFETY GLASS, Consult OGDEN & CLEAVER LTD. (GLASS DEPT.), Stuart Street, Luton.

Advertisement for BEDFORDSHIRE Building Society, offering investments accepted from 6d. to £5,000, located at 16, King Street, LUTON.

FIXTURES, 1949-50

Table of football fixtures for the 1949-50 season, including Division II and Reserve fixtures, with dates and scores.

RESERVE FIXTURES Football Combination F. A.

Table of reserve fixtures for the 1949-50 season, including Combination Cup matches, with dates and scores.

LEAGUE TABLES, 1949-50

League Division II table showing standings for Tottenham Hotspur, Sheffield United, Southampton, Leeds United, Hull City, Preston North End, Leicester City, Brentford, Bury, Swansea Town, Cardiff City, West Ham United, Chesterfield, Barnsley, Grimsby Town, Blackburn Rovers, Queens Park Rangers, LUTON TOWN, Bradford, Coventry City, and Plymouth Argyle.

League Division II table showing standings for Norwich City, Leicester City, Birmingham City, Ipswich Town, Watford, Coventry City, Northampton Town, and LUTON TOWN.

NEXT MATCHES

Good Friday, April 7th, 1950 Football League—Division II : Kick-Off 11 a.m. Luton Town v. Barnsley Usual First Team Prices of Admission Saturday, 8th April, 1950 Football Combination Cup : Kick-Off 3.15 p.m. Luton Town Res. v. Coventry C. Res. Usual Reserve Team Prices of Admission

G. A. WILD & SONS

THE
TOWN'S LEADING SPORTS OUTFITTERS

Fancy Leather Goods Dealers and Saddlers

14, MANCHESTER STREET, LUTON

Also at

'Phone No. 780

103, HIGH STREET NORTH, DUNSTABLE

'Phone No. 275

Suppliers to the Luton Town Football Club

Agents for UANDI ❖ SLAZENGERS ❖ DUNLOPS ❖ GRAYS

Buy your Tennis and Cricket Requisites early ! !

Our Latest Price List of Summer Sports Equipment available
on application :: :: :: We welcome Club enquiries

Full range of all ATHLETIC EQUIPMENT in stock RUNNING, CROSS COUNTRY and
CYCLING SHOES in all sizes

ATHLETIC SHORTS AND VESTS (Round Neck and $\frac{1}{2}$ Sleeves)

TRACK SUITS in all sizes now available

Agents for "B.S.A.," "WEBLEY," "DIANA" Air Rifles and Ancillary Equipment

❖ Slazengers Archery Equipment in stock

Tennis Rackets repaired and restrung on the premises at short notice by Specialists

BRISTLE AND PLASTICINE DART BOARDS
NOW AVAILABLE

Large Ranges of Darts to suit every Player—"BEDFORDIAN" DARTS
and FLIGHTS in Stock, also JIM PIKE and LEO NEWSTEAD Etc.

Ask to see our Super White Flights

— AGENTS FOR —

"Revelation," "Globetrotter" and "Antler" Suitcases
CABIN AND STEAMER TRUNKS IN STOCK

Fancy Leather Goods of Every Description . . .

The Finest Range in the County