



THE
LUTON TOWN FOOTBALL
AND ATHLETIC CO
LTD.

OFFICIAL
JOURNAL

PRICE
TWO PENCE



FOOTBALL LEAGUE—DIVISION II

SATURDAY, 16th SEPTEMBER, 1950

LUTON TOWN v. SHEFFIELD UNITED

“TRUE - FORM”

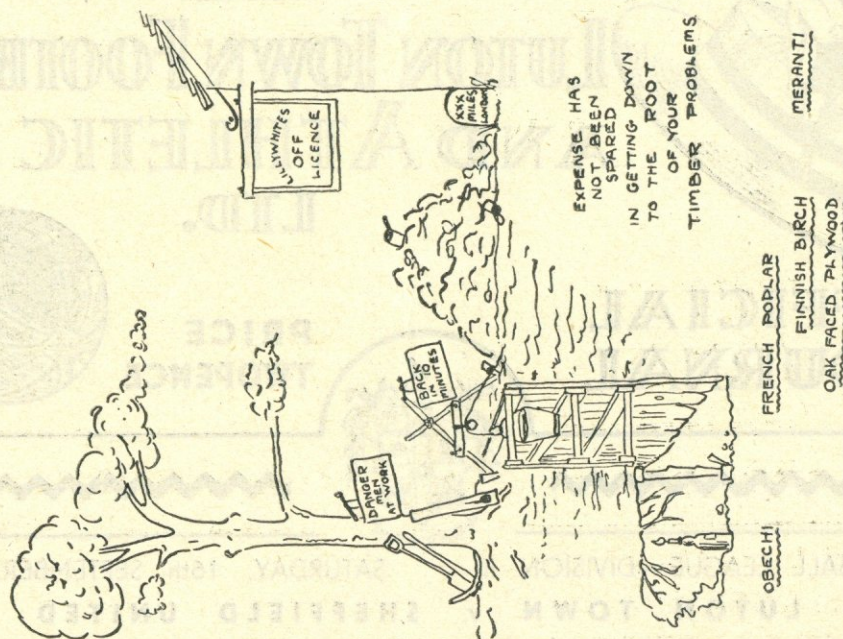
The Town's Leading Shoe Store

32, GEORGE STREET

FOR SHOES OF

QUALITY ★ CHARACTER ★ RELIABILITY



LILLYWHITE (Timber) LIMITEDT
I
M
B
E
R
M
E
R
C
H
A
N
T
ST
I
M
B
E
R
M
E
R
C
H
A
N
T
SPhone:
LUTON
2812/3Phone:
LUTON
2812/3

LEAGRAVE ROAD SAWMILLS, LUTON, BEDS.

LUTON BOBBERS STAND CLUB Telephone 2566

The winning number of the Penny - on - the Ball Ticket will be announced over the loud speakers at the interval. The person holding

the winning ticket can go to the rear of the Main Stand after the game and for 3d. purchase the ball from Mr. J. Collier.

*With the passing of the day some threads of sport get worn away
Some wish will fall, some move will break, some hope will fade
Maybe we have nursed a tiny hope, a hope we have never told
That we would one day make a name before we grew too old
We visualised a famous life, a photo in the news
A stranger begging autographs, and giving us his views
But things have not come that way, so we hold the bottom place
Together with a sad look on the supporter's face
But don't let us grow dejected when projects seem to fail
Nor lose faith too quickly with the early things that ail
Don't give up when your progress seems too slow
But put on an extra spurt instead, and watch your purpose grow
One often gets a backward step upon the upward slope
So keep up your courage, your faith and hope
Cling to them with all your might, don't let despondency win
Because you are bound to find some obstacle soon after you begin*

LUTON TOWN FOOTBALL AND ATHLETIC CO. LTD.

President: Chas. Jeyes, Esq., C.A.

Vice-President: The Rt. Hon. The Lord Luke of Pavenham

Directors:

Chairman: Chas. Jeyes Esq., C.A. Vice-Chairman: Percival G. Mitchell, Esq.
A. F. England, Esq. Horace S. Hewson, Esq. Henry Richardson, Esq.
E. Hugh Woods, Esq. Philip W. Wright, Esq.

Secretary: Mr. Philip Coley Team Manager: Mr. Dally Duncan

Honorary Medical Officer: E. J. Crarer, Esq., M.B., Ch.B.

Honorary Solicitors: Messrs Machin & Co., 17-19, George Street West, Luton



Telephone 3151

CLUB NOTES

WHAT a sigh of disappointment went round the ground last Saturday when the final result from Barnsley was announced over the loudspeakers. "Whatever had gone wrong" was an expression most frequently heard and we were thinking the same too. Nothing had "gone wrong" however, it was just one of those occasions when everything one team does "comes off" and the other side, try as they might, cannot make the thing click. A supporter who saw the match said, without prejudice, that it might easily have gone the other way. The goals scored by Barnsley were undeniably very good and very well taken, but the ball seemed to run just right for them somehow whereas our lads just could not obtain that advantage. It was definitely not Luton's day. Barnsley are a very good team and if they can avoid serious injuries will undoubtedly be a big factor in the final struggle for promotion. It is noted that even with three reserves in the team compared with the side which played last Saturday they beat Brentford at Griffin Park on Wednesday last by two clear goals.

We welcome Sheffield United to Kenilworth Road today and a very good match should be witnessed. They have not started off too well this season, having obtained six points from the seven matches so far played. Their home record is very similar to our own, having won one, drawn one, lost two, which is the same as ours, the only difference being in the goals, for they have scored six at home and conceded six, whereas we have scored four and conceded four. The "Blades" away record however is much better reading for them compared with ours. Of the three matches played away, one has been won, one drawn, and one lost, goals "for" four, goals "against" four, whereas we have conceded nine and scored two in the same number of matches. It therefore appears that the United are a well-balanced side and do not give much away. It is worth recalling that they missed promotion last season by the one-hundred-and-twenty-fifth part of a goal. So near and yet so far is a saying which, in this case, is very much to the point. (Point 008 to be exact.) Doncaster Rovers went to Bramall Lane on Monday last and held the United to a goalless draw.

The Reserves' match here last Saturday with Millwall Reserves never rose to great heights, and

was most disappointing. Our lads started off as if they were going to score quite a few goals, but gradually the opposition settled down and in the end we never looked like wiping out the one goal deficit.

The game at Swansea on Thursday last, however, was a very different affair, with some very good football from both sides. Our lads did very well to bring away a share of the spoils from Vetch Field, and from the report our side had a much more settled look about it than heretofore this season. We recalled Doug Gardiner to the Stiffs and there is no doubt he did stiffen the defence as of course we expected he would do. Bob Morton scored a nice goal and will undoubtedly score a good few more if he gets proper support. Jim Pemberton playing at inside left, scored the other.

We welcome back Tommy Kiernan to our fold today. We are not going into the pros and cons of this case, but we do say we are very glad to see him once more wearing the Black and White, and wish him every success.

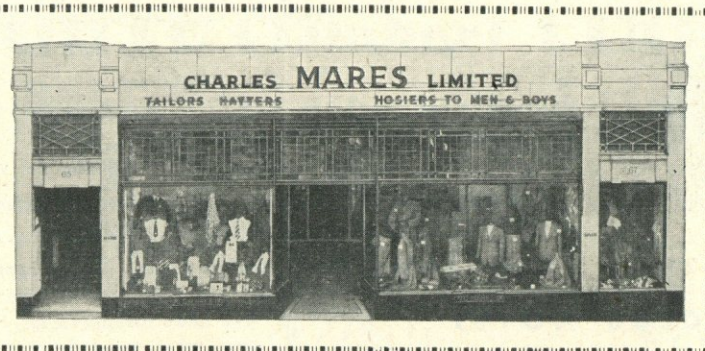
We have a match here on Wednesday evening next, kick-off 5.45 p.m. when we are hosts to Tottenham Hotspur in our first home Mid-Week League Fixture this season. We played the Arsenal "A" Team last Wednesday evening, and despite the fact that the "Gunners" had only one Amateur in their team compared with six of ours, they only managed to beat us by the odd goal in five, which, we felt, was a very good performance on the part of our youngsters. Laurie Lawton scored a very good goal after beating three men in a lovely dribble. Laurie is just resuming playing after an injury received while training before the season commenced and we now hope to see more of him on the field.

The F.A. Pocket Diary 1950/51 can now be obtained from the Football Association's Official Publishers, The Naldrett Press, 29, George Street, London, W.1, for 2/9 post free. This little book has a little more information in it this year than previously and is very handy to those interested in football.

"All Football," a high class illustrated weekly publication is now on sale every Wednesday at all stationers, price 2d. and those of you who want your information up to the minute with interesting talks and observations from players past and present, this paper is highly recommended.

Facing . .
BUTE STREET

Near the . .
TOWN HALL

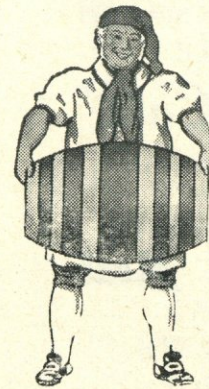


The STORE
where
VALUE
reigns
supreme

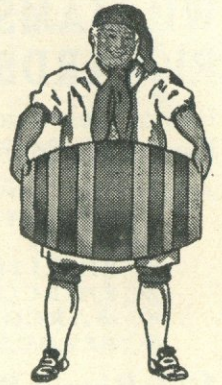
BOY'S
WEAR

MEN'S
WEAR

CHARLES MARES LTD., 65-67, George Street, LUTON



J. W. GREEN'S
Quality
Ales and Stouts



J. W. GREEN LTD., The Brewery, Luton Telephone: Luton 3131

❖ DAILY DELIVERIES
IN ALL DISTRICTS

Randall &
Whiting Ltd.

Wholesale and Retail
MILK
DISTRIBUTORS
Pasteurised and T.T.

HEAD OFFICE:
125, NORTH ST., LUTON
Telephone: Luton 599

DAIRY:
HAVELOCK RD., LUTON
and at 98-100, LUTON ROAD
DUNSTABLE

❖ ❖
Most Up-to-Date Equipment
in the County

'Phone: LUTON 1961
Proprietor: R. HARRIS

'Rons'
Gentlemen's
Hairdresser

6, MILL STREET
LUTON
BEDS.

Saloon Service
Ground Floor
Appointments First Floor

LUTON TOWN

Shirts White
Knickers Black
Stockings Black with White Tops

1 Hughes Goal
2 Cooke Right Back
3 Watkins Right Half
4 Stobart Outside Right
5 Kiernan Inside Right
6 Referee— Mr. G. L. ILIFFE (Leicester)

7 Thompson Outside Left
8 Shaw Left Half
9 Hagan Inside Left
10 Parkin Left Back

SHEFFIELD UNITED

Shirts Red and White Stripes
Knickers Black
Stockings Red and White Rings

SPECTATORS ARE ASKED NOT TO CROSS THE PLAYING FIELD AFTER THE MATCH

Football League—Division II

3 Aherne, T. Left Back
6 Shanks Left Half
10 Taylor, J. Inside Left
11 Glover Outside Left

Linesmen—
Orange Flag: Mr. K. G. ASTON (Ilford)
Red Flag: Mr. S. J. DOWSE (Southall)

8 McLaren Inside Right
7 Hutchinson Outside Right
4 Hitchen Right Half
2 Furniss Right Back



9 Simth or Jones Centre

5 Underwood Centre Half

Burgin Goal

Kick - Off 3.15 p.m.

GLAZING CONTRACTORS
LEADED LIGHT MAKERS

PLATE
GLASS
For All Trades

MIRRORS. To any shape or design.

RE-SILVERING. Old Mirrors as good as NEW.

Decorative Art in Wallpapers
Quality Paints of All Kinds

CHARLES BIRD
& SONS, LTD.

Collington Street, Luton
Telephones: 1255-1256

HARRY CANHAM & SON

Export Packers
Export Leatherboard Post Boxes
Cardboard Box, Packing Case
Ply Box & Crate Manufacturers

GROVE ROAD, LUTON
TELEPHONE 458

When you've heard the final whistle
Come and try us for 106 D
Hammer or Plier U
Axe or Chopper N
P Mat or Mop S
h Brush or Broom T
o Enamel or Paint A
n Rope or Twine B
e Lock or Furniture L
Ash Handle or Stale E
3 Incinerator or Bin R
2 Netting or Wire R
9 & Co. (Luton) Ltd. D

YOUR WINNING GOAL
FOR BEST QUALITY
RADIO, TELEVISION & ALL ELECTRICAL SUPPLIES

AGENTS
for
BUSH
COSSOR
FERRANTI
H. M. V.
PHILIPS
PHILCO
PILOT
ULTRA

A. T. SNOWDEN'S

171, DUNSTABLE ROAD
AND
24, MILL STREET, LUTON
PHONE: LUTON 1496

RELIABLE
RADIO
TELEVISION
ELECTRICAL
REFRIGERATION
INSTALLATIONS
AND REPAIRS
CARRIED
OUT BY
EXPERTS

HELEY'S
RESTAURANT
MILL STREET, Next to Gaumont Cinema
Special FISH & CHIP
DINNERS & TEAS

served on match days
PRICE including
TEA, BREAD AND BUTTER 1/9
Seating Accommodation 90
Telephone: Luton 3730
Proprietor:
A. E. Heley

WILLIAMS & RICHARDSON

Radio, Television & Electrical Engineers

Agents for—

- ❖ MURPHY
- ❖ H.M.V.
- ❖ PHILLIPS
- ❖ PHILCO
- ❖ MARCONI
- ❖ FERGUSON

174, Biscot Road & 17, DURHAM ROAD LUTON

'Phone: 593 and 2012

TODAY'S HALF-TIME SCORES

NOTE. The letter in the Programme corresponds with the letter on the Board—thus A 0-1 means that the first-named club has scored 0 and their opponents 1.

FIRST LIST

A WEDNESDAY	MIDDLESBRO'
B SUNDERLAND	BLACKPOOL
C WOLVES	TOTTENHAM
D CHELSEA	WEST BROM.
E DERBY CO'NTY	FULHAM
F EVERTON	LIVERPOOL
G ARSENAL	HUDDERSFIELD
H ASTON VILLA	BOLTON WAN
K BURNLEY	NEWCASTLE U.
L MANCH. UN.	CHARLTON A.
M PORTSMOUTH	STOKE CITY
N LEEDS UNITED	BARNESLEY

SECOND LIST

A LEICESTER C.	MANCH. CITY
B SWANSEA T	BLACKBURN R.
C WEST HAM U.	SOUTHAMPTON
D BURY	BIRMINGHAM
E CHESTERFIELD	COVENTRY C.
F HULL CITY	BRENTFORD
G NOTTS. CO'TY	DONCASTER R.
H PRESTON N.E.	GRIMSBY T.
K QUEEN'S P. R.	CARDIFF C.
L NORWICH C.	SWINDON T.
M PORT VALE	TORQUAY U.
N READING	NOTTS. FOR

THIRD LIST

A BOURNEM'UTH	LEYTON O.
B BRIGHTON & H.	BRISTOL ROV.
C BRISTOL CITY	WATFORD
D NEWPORT CO'	COLCHESTER
E NORTHANTS	ALDERSHOT T.
F EXETER CITY	IPSWICH T.
G GILLINGHAM	WALSALL
H MILLWALL A.	CRYSTAL PAL.
K SOUTHEND U.	PLYMOUTH AR.
L BRADFORD	SOUTHPORT
M CREWE ALEX.	BRADF'D CITY
N GATESHEAD	ROCHDALE

AFTER THE MATCH MAKE

'The Cafe'
YOUR GOAL AND BE CERTAIN OF **A Good Meal** AT A MODERATE CHARGE
●
34, Chapel Street LUTON

Motorists!

Fit **TRIPLEX SAFETY GLASS**

Consult **OGDEN & CLEAVER LTD.**
(GLASS DEPT.)
Stuart Street, Luton
'PHONE 746-7

ROCK SOLID INVESTMENT that puts safety and a good return first and foremost is the basis of financial independence. The Bedfordshire Building Society promotes this by safe investment and good management. Write for a free copy of 'INDEPENDENCE' which gives details of shareholding membership. Assets £2,500,000.

BEDFORDSHIRE Building Society
16, KING STREET, LUTON Telephone: 4577
Branch Manager: C. L. Robson
Managing Director: H. J. Weller, J.P., 44, Harpur St., Bedford

FIXTURES, 1950-51

FIRST XI Division II

Sat., Aug. 19	Brentford	...	1	0	H	2	0	
Thurs., .. 24	West Ham United	...	0	0	A	1	2	
Sat., .. 26	Blackburn Rovers	...	0	0	A	0	1	
Wed., .. 30	West Ham United	...	2	2	H	1	1	
Sat., Sept. 2	Southampton	...	1	1	H	0	1	
Wed., .. 6	Hull City	...	0	3	H	1	2	
Sat., .. 9	Barnsley	...	0	1	A	1	6	
.. 16	Sheffield United	...	1	3	H			
.. 23	Manchester City	...			A			
.. 30	Leeds United	...	1	2	A			
Sat., Oct. 7	Preston North End	...	1	1	H			
.. 14	Notts. County	...			A			
.. 21	Queens Park Rangers	...	1	2	H			
.. 28	Bury	...	2	5	A			
Sat., Nov. 4	Leicester City	...	1	0	H			
.. 11	Chesterfield	...	1	0	A			
.. 18	Grimsby Town	...	0	0	H			
.. 25	Birmingham City	...			A			
Sat., Dec. 2	Cardiff City	...	0	0	H			
.. 9	Coventry City	...	0	1	A			
.. 16	Brentford	...	1	1	A			
.. 23	Blackburn Rovers	...	5	2	H			
.. 25	Swansea Town	...	0	0	A			
Mon., .. 26	Swansea Town	...	1	2	H			
Tues., .. 30	Southampton	...	1	2	A			
Sat., Jan. 6	F. A. Cup—Round 3	...						
.. 13	Barnsley	...	3	1	H			
.. 20	Sheffield United	...	2	2	A			
.. 27	F. A. Cup—Round 4	...						
Sat., Feb. 3	Manchester City	...			H			
.. 10	F. A. Cup—Round 5	...						
.. 17	Leeds United	...	1	0	H			
.. 24	Preston North End (6)	...	1	0	A			
Sat., Mar. 3	Notts. County	...			H			
.. 10	Queens Park Rangers	...	0	3	A			
.. 17	Bury	...	2	1	H			
Fri., .. 23	Doncaster Rovers	...			A			
Sat., .. 24	Leicester City	...	2	3	A			
Mon., .. 26	Doncaster Rovers	...			H			
Sat., .. 31	Chesterfield	...	1	1	H			
Sat., Apr. 7	Grimsby Town	...	1	6	A			
.. 14	Birmingham City	...			H			
.. 21	Cardiff City	...	0	0	A			
.. 28	Coventry City	...	2	0	H			
Sat., May 5	Hull City	...	1	1	A			

F. A.

RESERVE FIXTURES Football Combination

Sat., Aug. 19	Cardiff City	...	0	2	A	0	1	
Wed., .. 23	Northampton Town	...	1	0	H	1	0	
Sat., .. 26	Arsenal	...	2	0	H	1	2	
Sat., Sept. 2	Birmingham City	...	2	4	A	0	1	
Mon., .. 4	Swansea Town	...	2	2	H	0	1	
Sat., .. 9	Millwall	...	0	0	H	0	1	
Thurs., .. 14	Swansea Town	...	1	1	A	2	2	
Sat., .. 16	Crystal Palace	...	0	1	A			
Thurs., .. 21	Queens Park Rangers	...	3	2	A			
Sat., .. 23	Fulham	...	3	1	H			
Tues., .. 26	Southend United	...	1	0	A			
Sat., .. 30	Southend United	...	0	0	H			
Thurs., Oct. 5	Northampton Town	...	3	3	A			
Sat., .. 7	Leyton Orient	...	2	3	A			
.. 14	Coventry City	...	4	1	H			
.. 21	Leicester City	...	0	3	A			
.. 28	Leyton Orient	...	2	1	H			
Sat., Nov. 4	Reading	...	0	0	A			
.. 11	Cardiff City	...	0	0	H			
.. 18	Millwall	...	1	3	A			
.. 25	Leicester City	...	0	3	H			
Sat., Dec. 2	Arsenal	...	4	0	A			
.. 9	Birmingham City	...	0	2	H			
.. 16	Bristol Rovers	...	0	0	A			
.. 23	Coventry City	...	1	1	A			
Mon., .. 25	Reading	...	4	1	H			
Tues., .. 26	Fulham	...	2	3	A			
Sat., .. 30	Crystal Palace	...	1	2	H			
Sat., Jan. 6	Bristol Rovers	...	4	5	H			
.. 13		...						
.. 20	Queens Park Rangers	...	1	0	H			
Sat., Jan. 27	Norwich City	...	2	4	H			
Sat., Feb. 3	Birmingham City	...	2	5	A			
.. 10	Northampton Town	...	0	0	A			
.. 17	Norwich City	...	1	3	A			
.. 24	Birmingham City	...	3	2	H			
Sat., Mar. 3	Ipswich Town	...	2	3	A			
.. 10	Leicester City	...	0	2	H			
.. 17	Coventry City	...	1	5	A			
Fri., .. 23	Northampton Town	...	0	3	H			
Sat., .. 24	Watford	...	5	0	H			
.. 31	Watford	...	0	3	A			
Sat., Apr. 7	Coventry City	...	2	0	H			
.. 14	Leicester City	...	1	1	A			
.. 21	Ipswich Town	...	0	0	H			
.. 28		...						
Sat., May 5		...						

Combination Cup

LEAGUE TABLE, 1950-51

LEAGUE DIVISION II									
		Pld.	Won	Drn.	Lost	For	Agst.	P.	
Manchester City	...	7	5	2	0	23	11	12	
Birmingham City	...	8	5	2	1	11	6	12	
Coventry City	...	8	5	1	2	11	4	11	
Southampton	...	8	4	3	1	8	4	11	
Blackburn Rovers	...	8	5	1	2	13	9	11	
Barnsley	...	7	4	1	2	20	12	9	
Cardiff City	...	7	2	4	1	9	7	8	
Doncaster Rovers	...	7	2	4	1	9	7	8	
Brentford	...	7	4	0	3	13	13	8	
Hull City	...	7	3	2	2	15	15	8	
Chesterfield	...	8	3	2	3	11	15	8	
Leicester City	...	7	2	2	3	13	13	6	
SHEFFIELD UNITED	...	7	2	2	3	10	10	6	
West Ham United	...	7	2	2	3	11	13	6	
Leeds United	...	7	3	0	4	8	10	6	
Queens Park Rangers	...	7	2	2	3	9	15	6	
Preston North End	...	8	2	1	5	10	13	5	
Bury	...	7	2	1	4	9	14	5	
Notts. County	...	7	1	2	4	8	11	4	
Grimsby Town	...	7	0	4	3	10	15	4	
Swansea Town	...	7	1	1	5	10	17	3	
LUTON TOWN	...	7	1	1	5	6	13	3	

NEXT MATCHES

Wednesday, 20th September, 1950

LONDON MID-WEEK LEAGUE

LUTON 'A'

v.

TOTTENHAM 'A'

Kick-Off 5.45 p.m.

Admission:—

Stand and Enclosure only 1/-, Boys 6d.

Saturday, 23rd September, 1950

FOOTBALL COMBINATION

LUTON TOWN RES.

v.

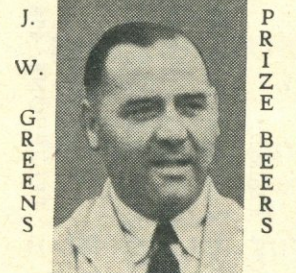
FULHAM RESERVES

Kick-Off 3.15 p.m.

Usual Reserve Team Prices of Admission

Warden Tavern

2½ miles out of Luton on main Bedford Road
Proprietor: **Tom Hodgson**
Ex-Captain, Luton Town F.C.



Luncheons
Wedding Receptions: Social Functions: Evening Parties
Fully Licensed Large Car Park

Greet your customers with **GOOD PRINTING** BY **E. A. ALLEN & SON (Luton) LTD.**
424, DUNSTABLE ROAD
'Phone LUTON 1626

G. A. WILD & SONS

THE
TOWN'S LEADING SPORTS OUTFITTERS
14, MANCHESTER STREET, LUTON

Also at . . .

'Phone No. 780

103, HIGH STREET NORTH, DUNSTABLE

'Phone No. 275

Suppliers to the Luton Town Football Club

Your Goal for all leading makes of Sports Goods

AGENTS FOR

Embekay, Mansfield, Cotton Oxford, Shillcock, Kingswell, Alex James
FOOTBALL BOOTS

We hold a grand range of

FOOTBALL JERSEYS : KNICKS : HOSE : GOAL KEEPERS'
SWEATERS : : SHIN GUARDS : : TRACK SUITS, Etc.

Prices of FOOTBALL SHIRTS on application

Stocks of ASSOCIATION FOOTBALLS include —

Thomlinson's Improved T Pattern, Stuart Surridge Straight Eighteen,
Webbers Premier, The Tommy Lawton

A choice of nozzle or valve pattern may be had in these makes

Other Makes in Stock — SLAZENGERS, CROOKS, PHILLIPS, GILBERTS, Etc.

We can offer immediate delivery for

FOOTBALL GOAL NETS, International and Club Pattern

★ *Our Football Catalogues are now available, and may be had free of charge*

We welcome Club enquiries, why not call on us after the match

Stockists for all leading makes of —

RUGBY, BADMINTON, HOCKEY, SQUASH and BOXING EQUIPMENT

❖ ❖ ❖

Indoor Games a speciality

Regulation Table Tennis Tables in stock