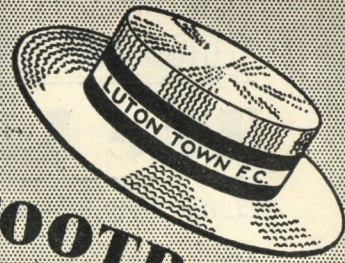


OFFICIAL JOURNAL



LUTON TOWN FOOTBALL AND ATHLETIC CO. LTD.



OFFICIAL JOURNAL



L & Hall

SATURDAY, 6th MARCH, 1954

Football League—Division II

Luton Town v. Notts. County

TRUE-FORM *Shoes*

THE BEST VALUE
IN TOWN



32 GEORGE STREET, LUTON.

The Lillywhite Competition

Home Ground—**LEAGRAVE ROAD, LUTON**

(With under cover accommodation)

Nearest Station—**CHILTERN GREEN**

Colours—Lilywhite

Kick-Off 8 a.m. All Match Days (Except Sundays)

Lillywhite's Team Versus..... (Any Colour)

	1 Goal Sir Vice		3 Left Back C. Roscutter	
2 Right Back P. Laner		5 Centre Half M. Oldings	6 Left Half D. Ores	
4 Right Half P. Oles		9 Centre Forward F. Lorings	10 Inside Left S. P. Ruce (Canadian)	11 Outside Left T. R. Ellis
7 Outside Right S. Hingles	8 Inside Right P. Lye			
Reserve: N. P. Banks	Referee: T. Imber (Control) (Retired)	Linesmen: P. Rompterns C. Ash		

All Players on Free Transfer List

Luton Bobbers Stand Club

Telephone
LUTON 2566

BEECH HILL PATH

The winning number of the Penny - on - the - Ball Ticket will be announced over the loud speakers at the interval. The person holding the winning ticket can go to the rear of the Main Stand after the game and for 3d. purchase the ball from Mr. C. W. Gregory.

The ticket number for the ball on Saturday, February 13th, 1954, was **14513** and the supporter who had this number was—

Mr. J. TELLER,
20, Gas Street, Toddington, Beds.

BE SURE AS YOU ENTER THE GROUND

— at any entrance —

TO PURCHASE YOUR

PENNY - ON - THE - BALL - TICKETS

- ★ The supporter that holds the winning ticket will receive the ball
- ★ And also be entertained by the Directors at the following home league game

J.C.

CLUB NOTES

WE did very well indeed to return from Boothferry Park last Saturday with maximum points, for Hull had been showing greatly increased form lately and a sterling effort by Tottenham Hotspur in a Replay with them in the Fifth Round of the F.A. Cup at White Hart Lane earlier in the week was required before the Spurs passed into the next Round. And even then the "Tigers" felt they had not received proper justice for they were fully convinced they were entitled to a penalty in the closing stages of that Replay. Whether we met Hull on some sort of rebound after that match we do not of course know, but this is not going to deter us from giving all our lads full marks for a very workmanlike performance in beating them. Sid Owen's ankle had not responded to treatment from the injury he received on the Wednesday in the Floodlight Match with the Brazilians and Les Hall was hurriedly called in on the Friday morning to fill the breach. Right nobly did he fulfil his task too, after a somewhat cautious opening ten minutes he did not put a foot wrong. Johnie Downie scored a very neat goal early in the game, and near the end when we were all feeling very pleased with ourselves that we had held this team to a draw on their own ground, lo and behold, Wally Shanks comes along with a picture goal with only three minutes to go. It was from a very nice pass by Mike Cullen practically along the edge of the penalty area from the right that Wally ran on to and with his left foot hit that ball first time. It was a goal all the way, it went in with such force.

Although the winning goal was scored by a half-back, which appeared again that the forwards were lacking, such was not the case in this match. How the Hull goalie kept out four shots just before half-time only he himself knows. Each one of them would have beaten nine goalkeepers out of ten, especially the first one from Roy Davies and the last one from Gordon Turner. Mid-way through the second half Joe Scott who, incidentally, played a very intelligent and effective game, headed the ball just wide of a post with the goalkeeper helpless—an effort which fully deserved to have his name included in the scorers. The forward line knitted together very well—there was some very nice football from them at times, and what was most pleasing to see was the fact that the ball was rarely passed backwards. Last time we scored two goals in one match was against Plymouth at home in the first match of the new year. If this forward line can escape injury we feel sure our goals "for" column is going to be greatly improved.

Our Reserves were also putting up a very fine performance away from home last Saturday when they held a strong Norwich City Reserve side to a draw. As West Ham Reserves lost to Leicester City Reserves that day we now find ourselves only one point behind the leaders, although they have a game in hand. This is most creditable for at times we meet some very stiff opposition in this League. Go to it lads and see if you cannot pull off the feat of winning the Second and First

Division Championships in consecutive seasons. Your play lately has certainly given us rich hopes of such an accomplishment.

We must not forget our illustrious visitors in all this well-earned praise of our two senior teams. Notts. County are another side which has shown much improved form lately, and as their last three appearances on this ground have met with disastrous results, together with the fact that we beat them by two goals to one at Meadow Lane last October, they no doubt come here today determined to put an end to this black story. Their away record this season shows them to have obtained 13 points out of a possible 32, compared with our 14 points from the same number possible, so that we can expect some excitement from today's encounter. Notts. County are the oldest League Club, having been founded in 1862, and of course, as is well known, were one of the original twelve members of the Football League when it commenced activities in 1888. Although they have never won the Championship of the First Division they have been Division 2 Champions on 3 occasions, and Runners-up once, as well as having won the F.A. Cup, in season 1893/94.

After an absence from Kenilworth Road of nearly two years we shall once more see our old player (and we mean 'old' in the nicest sense) Jack Taylor, who went to Wolverhampton Wanderers from here and was transferred to Notts. County about three weeks ago. Last week at Meadow Lane he scored his first goal for them, which enabled the County to draw one goal each with their neighbouring team the Forest. We wish him every success with his new Club—after today.

The Luton Schoolboys went down to the Shield Holders at Vetch Field last Saturday after putting up a very gallant display. They collected no less than seven injuries in this encounter—too big a handicap against such a strong side. You gave a good account of yourselves, lads, and although you did not get into the coveted semi-finals to make history for Luton you played some grand football in getting as far as you did and are to be congratulated on your achievements. Perhaps better still next time.

The Running Commentary direct to the Luton and Dunstable Hospital each First and Reserve match is now in full swing, and from all reports is proving most satisfactory. One or two improvements have been incorporated since the scheme was first put into operation which has resulted in the cost exceeding the receipts obtained from a collection we had inside the ground, and a few donations which have been gratefully acknowledged. Dare we ask that one or two of you here today who have received treatment at our local Hospital for which you will be eternally grateful, and appreciating what these broadcasts mean to the present patients, will spare a moment to send a donation, however small, either to the Office or to Miss Price, Assistant Secretary of the Luton and Dunstable Hospital. Such donations we can assure you will be acknowledged with grateful thanks.

THE COVERMAN

Leslie Frederick Hall

LES HALL signed Amateur Forms for us in 1941, turning professional the following year. He is therefore our longest playing member and what an asset to the Club he has been.

Was selected for the Schoolboy International Trial Match in 1936, joining St. Albans in 1940 and thence to us. Immaterial whether chosen to play in the First or Reserve teams puts all he has into it and plays as if he thoroughly enjoys his game.

Mares for choice — VALUE and STYLE in SCHOOL OUTFITS



CHARLES MARES LIMITED
65, George Street, LUTON



Keep out the Cold
with
Dragon's Blood
The Famous
Old English Strong Ale



All parts of Luton supplied
with Milk

Randall & Whiting

Limited
Duke & Burr Streets
LUTON

'Phone: LUTON 2991-2

Pasteurised * T. T.
Channel Island Farm
Bottled
Channel Island
Sterilised
Synthetic Cream
Yoghourt

And at
98-100, LUTON ROAD
DUNSTABLE

'Phone: LUTON 1961
Proprietor: R. HARRIS

'Rons' Gentlemen's Hairdresser

6, MILL STREET
LUTON
BEDS.

Saloon Service - Ground Floor
Appointments - First Floor

LUTON TOWN

Shirts White
Knickers Black
Stockings Black with White Tops

1 Jones Right Back
2 Morton Right Half
3 Cullen Outside Right
4 Turner Inside Right

Referee—
Mr. J. W. TOPLISS
(Grimsby)

5 Crookes Outside Left
6 Chatham Left Half
7 Yllie Inside Left
8 Deans Left Back

NOTTS. COUNTY

Shirts Black and White Vertical Stripes
Knickers Black
Stockings Black and White

Streten
Goal

5 Hall Centre Half
9 Scott Centre



9 Johnston Centre
5 Leuty Centre Half

Bradley
Goal

Football League—Division II

3 Aherne Left Back
6 Shanks Left Half
10 Downie Inside Left
11 Davies Outside Left

Linesmen—
Red Flag: Mr. S. J. DOWSE
(Southall, Middlesex)

Orange Flag: Mr. N. ONLEY-WILDE
(London)

8 Taylor Inside Right
7 Coole Outside Right
4 Adamson Right Half
2 Southwell Right Back

Kick - Off 3 p.m.

SPECTATORS ARE ASKED NOT TO CROSS THE PLAYING FIELD AFTER THE MATCH

WARMTH in Winter; Style in Summer. The answer is a Redfyre Continuous Burning Fire in a modern Tiled Surround. Come and see our wide selection. We also stock the best in Baths, Geysers, Lavatory Basins and Toilet Ware. Come and see us, too, about Wallpapers, Paint and all Decorators' Materials.

WE supply Glass of all kinds, cut to size, and make Mirrors to order. Your old Mirrors Re-silvered as good as new at our

Glass Grinding, Polishing and Silvering Works

CHARLES BIRD & Sons, Ltd. Tel: Luton 1255 and 1256
Collingdon St., Luton

HARRY CANHAM and Son

Export Packers
Export Leatherboard Post Boxes
Cardboard Box, Packing Case
Ply Box and Crate Manufacturers
Telephone: LUTON 458

GROVE ROAD, LUTON

W. CHAMBERLAIN & Co. (Luton) Ltd.

GENERAL HARDWARE MERCHANTS

VALSPAR Lacquer and Flat Wall Paint
MEREDITH'S
Celebrated Merlac Paint, Stains and Varnishes
SISSON'S PARIPAN
Sicolin Distemper : Enamels and Water Paint

Wallpapers and Borders etc.

ALL GARDEN REQUISITES

106, Dunstable Road, Luton
Telephone 329 Enquiries Invited

Make your savings
earn as much as
possible—safely

Call, telephone or write
for full particulars

Managing Director:
H. J. WELLER, J.P., F.C.I.

BEDFORDSHIRE BUILDING SOCIETY
16 KING STREET, LUTON Telephone 4577

HELEY'S Restaurant

MILL STREET, Next to Gaumont Cinema

SPECIAL

FISH & CHIP
DINNERS & TEAS

SERVED ON MATCH DAYS

Seating Accommodation: 90

'Phone: Luton 3730 Proprietor: R. A. Heley

WILLIAMS & RICHARDSON

Radio, Television and Electrical Engineers

AGENTS FOR

- MURPHY H. M. V. PHILLIPS PHILCO MARCONI FERGUSON

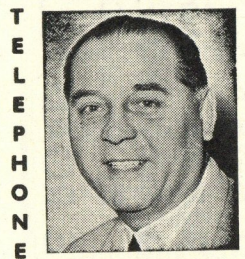
174, Biscot Road AND 17, DURHAM ROAD Luton

Phone: 593 and 2012

Warden Tavern

2 1/2 miles out of Luton on main Bedford Road

Proprietor: Tom Hodgson Ex-Captain, Luton Town F.C.



TELEPHONE 277

LUNCHEONS WEDDING RECEPTIONS: SOCIAL FUNCTIONS: EVENING PARTIES Fully Licensed Large Car Park

Good Introduction to your customers is achieved through



Printing that Pleases by

E. A.

ALLEN & SON (LUTON) LTD.

424, DUNSTABLE ROAD Luton Phone 1626

TODAY'S HALF-TIME SCORES

NOTE: The letter in the Programme corresponds with the letter on the Board—thus A 0-1 means that the first-named club has scored 0 and their opponents 1.

FIRST LIST

Table with 2 columns: Team and Score. Rows include Bolton W vs Sunderland, Burnley vs Arsenal, Charlton vs Portsmouth, etc.

SECOND LIST

Table with 2 columns: Team and Score. Rows include Fulham vs Blackburn, Leeds United vs Brentford, Leicester C. vs Bury, etc.

THIRD LIST

Table with 2 columns: Team and Score. Rows include Crystal Pal. vs Coventry, Exeter City vs Southend, Newport vs Brighton, etc.

HOLIDAYS

A Full Week in Paris - £15/5/- Ostend £16/10/- Fully inclusive

- Travel from Luton Hotel Accommodation Taxi from Station to Hotel and vice versa All Tips: Leaflets from

Travel House

21, Leagrave Rd., Luton Tele.: 5855/6

202, High Street South Dunstable Tele.: 100

Motorists!

Fit TRIPLEX SAFETY GLASS

Consult OGDEN & CLEAVER LTD. (GLASS DEPT.)

Stuart Street, Luton PHONE 746-7

ALWAYS A HAPPY EVENING AT THE

"Chequers" EATON BRAY

Summer or Winter with Mann's Finest Beers and

Our Speciality: Chicken Sandwiches

Telephone: Eaton Bray 244

Direct Bus Route from Luton Large Car Park Lawn for the Kiddies

FIXTURES, 1953-54

Table of fixtures for Division I and Division II, listing dates, teams, and attendance.

Table of reserve fixtures and combination cup matches, listing dates, teams, and attendance.

LEAGUE TABLES, 1953-54

Up to and including 27th February, 1954

League Division II table showing teams, played, won, drawn, lost, goals for, goals against, and points.

Football Combination—Division I table showing teams, played, won, drawn, lost, goals for, goals against, and points.

Saturday, 13th March, 1954

FOOTBALL COMBINATION KICK-OFF 3 p.m. LUTON TOWN RES. v. BOURNEMOUTH RES.

PRICES OF ADMISSION: Wing Stands & Enclosure 1/6, Boys 1/- Bobbers Stand (covered) 1/3, Boys 10d. Terraces (not covered) 1/-, Boys 9d. All Prices include Entertainment Tax

G. A. WILD & SONS

The Town's

LEADING SPORTS OUTFITTERS

14, Manchester Street - - Luton

'Phone No. 780

Also at

103, High Street North, Dunstable

'Phone No. 275

★ Suppliers to the Luton Town Football Club ★

YOUR GOAL for all leading makes of SPORTS GOODS

Stocks of Embekay, Manfield, Cotton Oxford
Shillcock, Arthur Rowe FOOTBALL BOOTS

In Great Variety

FOOTBALL JERSEYS : SHIRTS : KNICKS : HOSE
GOAL KEEPERS' SWEATERS : SHIN GUARDS : GOAL POSTS
GOAL NETS : BALL CARRYING NETS : TRACK SUITS
REFEREE'S OUTFITS, ETC.

Agents for

Thomlinson's Improved T Pattern, Stuart Surridge Straight Eighteen, Webber's Premier
Slazenger's All White Association Footballs in valve or nozzle pattern

We hold a grand range of

RUGBY :: BADMINTON :: SQUASH :: BOXING EQUIPMENT

Our Winter Catalogues Free on Application

We welcome all enquiries

BRISTLE, PLASTICINE AND COMPRESSED PAPER DART BOARDS

DARTS TO SUIT EVERY PLAYER

Super Range of Feather, Plastic and Cane Flights

Indoor Games a Speciality Regulation Table Tennis Tables in Stock

We hold the finest range of Travel Goods in the County

Agents for Antler, Revelation, Globe Trotter etc.