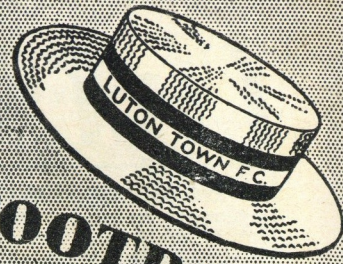


OFFICIAL JOURNAL

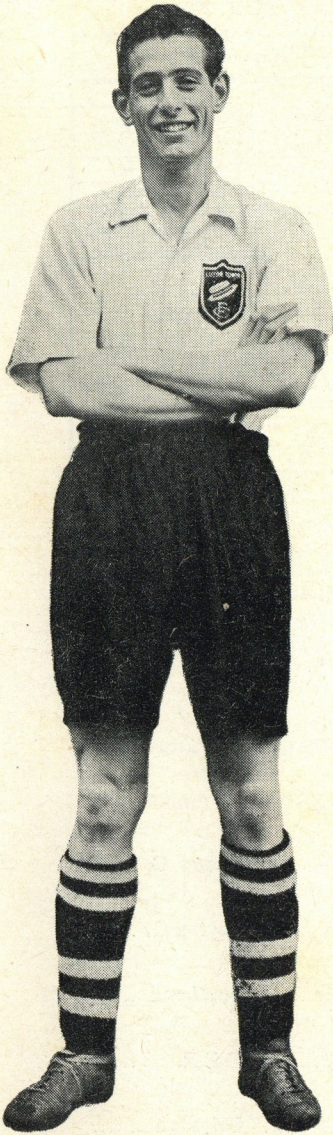


LUTON TOWN FOOTBALL AND ATHLETIC CO. LTD.



PRICE 3d

COMPLIMENTARY



John Graves

Inside Left
Luton Town F.C.

Saturday, 9th April, 1955

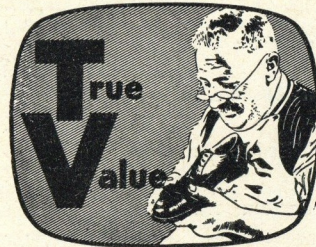
FOOTBALL LEAGUE — DIVISION II

Luton Town v. West Ham United

True-Form

Expert Shoemakers

MENS
SMART
SHOES



LADIES
FASHION
SHOES

TAKE ADVANTAGE OF THE

TRUE-FORM

24 HOUR REPAIR SERVICE

Special offer of 2/- in the £ reduction on shoes of our own make

32 GEORGE STREET, LUTON

LILLYWOODS

OUR TREBLE CHANCE POOL

ASK FOR IT
GET IT
PAY FOR IT

Bobbars Odd Jobbers Pool	
LARCH POLES	1
INSULATION BOARD	2
LATHS	3
LAUREL	4
YELLOW PINE	5
WATTLE HURDLES	6
HEMLOCK	7
INTERWOVEN SCREENS	8
TABLE LEGS	9
EDGING BOARDS	10
SAWDUST	11
MAXIMUM AMOUNT (What you can afford)	
<i>If you have an outstanding account please enclose remittance with this coupon</i>	

No. 1
PASS ONE ON TO YOUR FRIEND
LILLYWHITES LEAGUE RD. LUTON
OFFER YOU THE BEST
POST EARLY

Easy Six	
SOFTWOOD	1
HARDWOOD	2
PLYWOOD	3
DOORS	4
GATES	5
HARDBOARD	6
NO LIMIT	
The Buyers' Favourite Pool 3 DRAWS	
KEEN PRICES	1
SERVICE	2
DELIVERY	3
YOU WIN EVERY TIME	
LILLYWHITE LTD. (TIMBER)	
<i>Have no connection with any other firm</i>	

Post your Coupon to:
LEAGRAVE ROAD LUTON

Your Ref. No. is
Luton 6282

I have read your terms and promise to remit the staked amount.
MR.
MRS.
MISS
BLOCK LETTERS PLEASE
Customers of no fixed abode are not eligible

GOOD FRIDAY FIXTURES

The results of these matches will be announced over the loudspeakers during the afternoon

DIVISION I		DIVISION II		DIVISION III (South)	
Arsenal	Cardiff	Blackb'rn	Lincoln	Aldershot	Exeter C.
Bolton	Sheff. W.	Bristol R.	Plymouth	Brentford	Leyton O.
Burnley	Blackpool	Bury	Hull C.	Colch'ster	Southend
Chelsea	Sheff. U.	Derby C.	Swansea	Crystal P.	Q.P.R.
Everton	Newcastle	Donc'ster	Notts C.	Gill'gh'm	Brighton
Man. C.	W. Brom.	Luton T.	Leeds U.	Millwall	Coventry
Portsm'th	Charlton	M'dd'bro'	Birm'ham	Newport	Swindon
P.N.E.	Leicester	Notts F.	Roth'ham	Watford	South'ton
Sund'land	Man. U.	Port V.	Liverpool		
		W. Ham	Fulham		
DIVISION III (North)					
Barrow	Work'gt'n	Crewe	Stockport	Oldham	Scunth'pe
Carlisle	Tranmere	Gatesh'd	Darl'gt'n	Southport	Mansfield
Chester	Rochdale	Grimsby	Bradford	Wrexham	Halifax
Chest'rf'd	Hartlep'ls			York C.	Accr'gton

Luton Town Football and Athletic Co., Ltd.

Established 1885 :: Incorporated 1897 :: First Professional Side, Season 1891/92

CLUB NOTES

WE extend a hearty welcome to our near-neighbours from the Boleyn Ground on this Easter Saturday in a match that is almost certain to have a big bearing on the outcome of the top final positions at the end of the season. When these Notes were being penned, on Wednesday last, the "Hammers" were lying in a very comfortable fourth place only two points behind us with the same number of games played but with two in hand on the two Clubs occupying second and third places. West Ham had a hard nut to crack yesterday no doubt when they were at home to Fulham but they have been playing so well lately that it would surprise us if they have not greatly improved their prospects as a result of that match. When we met the "Hammers" in London last November to finish on the losing side by the odd goal in three it was considered by all but the most fervant West Ham supporters that they were very fortunate to get away with both points. How their goal escaped on at least three occasions will always remain a mystery to our lads, but it did and it is goals that count. One point at a time does not appear very much but supposing we had obtained one point that day we would be feeling a little happier today for the Table given on another page would show Luton four points above West Ham instead of only two. It is not so much that a point is gained as that a point is being taken from the other team which can, as on this occasion, mean a vital difference of two points. Whatever the result of today's match however we feel sure the very cordial relationship which exists between our two Clubs will be in no way impaired and we say in all sincerity—may the best team win.

We thought we were going to bring home the full ration of bacon with us from Liverpool last Saturday, especially when we were one goal to the good with only five minutes to go. Our lads had played magnificently to take the lead, no mean achievement on your opponent's ground after being three to one in arrears, but each goal scored was the result of excellent approach work allied to delightful football, and even the Liverpool fans then had given up all hope of their team getting even a point from this match. If Bernard Streten had not received a painful knock on a knee about a quarter of an hour from the end we are quite sure there would have been no bonus for the Anfield Road boys, but Streten was not able to get up to the ball as it came over from the corner kick and four of the Liverpool players, all bunched together in front of our goal, managed to head the ball into the net. There was great satisfaction that we had obtained one point, for Liverpool are a very good team and they will not drop many more points this season, especially if they play as well as they did against us, but we so nearly had them both. Only a magnificent save by the Liverpool goalie prevented Roy Davies having his name included with the other two scorers, and if this had found the back of the net, which it richly deserved to do, then we would have had a two-goals lead and Liverpool would not have been able to gird their loins sufficiently to wipe out that deficit. Altogether a very good game, full of interest and good football from both sides, very reminiscent of the replayed Cup Tie at Leicester in February 1949 when we lost by five goals to three after almost catching up from a four goals to one deficit.

Those of you who were present here last Saturday to see our second string play Bristol City Reserves must have felt very disappointed in our lads' display, for they never seemed able to cope with the spoiling tactics adopted by their opponents. If however you had seen practically the same team playing at White Hart Lane last Monday night when our lads held a strong and experienced Spurs side to a draw of one goal each you would have been proud of them and thoroughly enjoyed the game into the bargain. It was a most pleasing game with some really fine football from both sides and a draw was a very fair result taking the game right through.

Our Assistant Manager and Coach, Mr. Tim Kelly, has been offered the Managerial Chair at Bedford Town and after much consideration has decided to accept it and we, not wishing to stand in his way, have agreed to release him. He starts his duties directly after the Easter Holiday is over and he goes from Kenilworth Road with the happy assurance that we wish him well in his new appointment. Tim came to us in August 1952 and in those three seasons has assiduously applied himself, particularly in the coaching of our youngsters. We shall watch his progress with his new Club with much interest.

We then considered whether or not the position should be filled and it was decided that in view of our promotion prospects it ought to be filled at once. Upon whom should the choice fall? A policy has been adopted this season of giving our own playing staff every opportunity of filling a position before looking elsewhere for a replacement should one become necessary. Here was a position on the Staff—should we adopt the same policy here? It was agreed that we should and straightaway it was felt that the man for the job was our own Captain, Syd Owen. In view of the fact however that Syd is still playing and, what is more, hope we shall have a few more year's service from him on the field, decided to offer him the position of Player/Coach. Syd was delighted with the suggestion, accepted immediately, and so will combine the two duties until the end of his playing career. With his wide experience including International calls, his great ability as a Captain and his general approach to the game we feel that a wise choice has been made and shall be very surprised if the appointment does not turn out to be one of the most successful we have ever made.

We will give out the results of yesterday's matches over our loud speakers during the afternoon and space has been provided in this Programme for you to keep a note of them should you wish to do so. We will also give out today's results of the top three or four teams if they come through in time.

Tickets for the Schoolboys' International Match to be played on this ground on the afternoon of Saturday, April 30th will be on sale at the various Refreshment Bars after today's match and at all subsequent matches until they are all sold. It is an All-Ticket Match, so those of you who wish to see it are advised to purchase your Ticket without delay for enquiries are continually being received from neighbouring Counties and Towns, and once the Tickets are sold there will be no other means of obtaining admission to the ground. Prices are, Centre Stand 5/-, Wing Seats 4/-, Enclosure 3/-, Bobbers Stand 2/-, Terraces 1/6.

You'll be snug and warm in a good raincoat from Mares

Charles MARES Limited

Men's and Boys' Wear

65, George Street, Luton, Beds.

and at ST. ALBANS - KETTERING - BEDFORD - BLETCHLEY - ST. NEOTS

Keep out the Cold with **Dragon's Blood**

The Famous Old English Ale



All parts of Luton supplied with Milk

Randall & Whiting

Limited

Duke & Burr Streets LUTON

'Phone: LUTON 2991-2

Pasteurised :: T.T.

Channel Island Farm Bottled

Channel Island Sterilised

Cream :: Yoghourt

And at

98-100, LUTON ROAD DUNSTABLE

'Phone : LUTON 1961

Proprietor : R. HARRIS

'Rons' Gentlemen's Hairdresser

6, MILL STREET

LUTON BEDS.

Saloon Service - Ground Floor

Appointments - First Floor

LUTON TOWN

Shirts White
Knickers Black
Stockings Black with White Tops

Baynham Goal
2 Dunne Right Back
4 Pemberton Right Half
7 Davies Outside Right
8 Turner Inside Right

Referee :

Mr. L. CALLAGHAN (Merthyr Tydfil)

11 Musgrove Outside Left
10 Dick Inside Left
6 O'Farrell Left Half

3 Cantwell Left Back

WEST HAM UNITED

Shirts Claret and Blue
Knickers White
Stockings Claret and Blue

Baynham Goal

5 Owen Centre Half
Morton Centre



9 Dare Centre
5 Allison Centre Half

Taylor Goal

Football League—Div. II

3 Aherne Left Back
6 Shanks Left Half
10 Cummins Inside Left
11 Adam Outside Left

Linesmen :

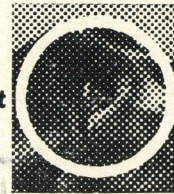
Red Flag : Mr. E. W. Herridge (Hatfield)
Orange Flag : Mr. H. Horner (Kenilworth)

8 Bennett Inside Right
7 Hooper Outside Right
4 Malcolm Right Half
2 Wright Right Back

Kick-Off 3 p.m.

Spectators are asked NOT TO CROSS THE PLAYING FIELD after the match

Distance Lends Enchantment



To see what it is—hold at arm's length

And MIRRORS lend Enchantment, too.

Make your Home, Shop, Office

BRIGHTER and BIGGER

CHARLES BIRD & Sons, Ltd.

Tel: Luton 1255-6

Glass Grinding, Polishing, and Silvering Works

Collingdon Street LUTON



HARRY CANHAM & SON

Export Packers

Export Leatherboard Post Boxes

Cardboard Box, Packing Case

Ply Box and Crate Manufacturers

GROVE ROAD, LUTON

Telephone: LUTON 458

W. CHAMBERLAIN

& Co. (Luton) Ltd.

GENERAL HARDWARE MERCHANTS

VALSPAR Lacquer and Flat Wall Paint

MEREDITH'S

Celebrated Merlac Paint, Stains and Varnishes

SISSON'S

PARIPAN

Siscolin Distemper : Enamels and Water Paint

Wallpapers and Borders etc.

ALL GARDEN REQUISITES

106, Dunstable Road, Luton

Telephone 329

Enquiries Invited

Make your savings earn as much as possible - safely

Call, telephone or write for full particulars

Managing Director:

H. J. WELLER, J.P., F.C.I.I.

BEDFORDSHIRE BUILDING SOCIETY

16 KING STREET, LUTON Telephone: 4577

HELEY'S Restaurant

MILL STREET, Next to Gaumont Cinema

SPECIAL

FISH & CHIP DINNERS & TEAS

SERVED ON MATCH DAYS

Seating Accommodation: 90

'Phone: Luton 3730 Proprietor: R. A. Heley

WILLIAMS & RICHARDSON

Radio, Television & Electrical Engineers

AGENTS FOR

- ★ H. M. V.
- MURPHY
- PHILLIPS
- PHILCO
- MARCONI
- FERGUSON

174, Biscot Road
and 17, DURHAM ROAD
Luton

'Phone: 593 and 2012

Warden Tavern

2½ miles out of Luton
on main Bedford Road
Proprietor Tom Hodgson
Ex-Captain, Luton Town F.C.



I C K N I E L D
2 7 7

Wedding Receptions
Luncheons Social Functions
Evening Parties
Fully Licensed Large Car Park

Printing that Pleases

★

E. A.

ALLEN & SON (LUTON) LTD.

424, DUNSTABLE ROAD
LUTON
'Phone 1626

TODAY'S HALF-TIME SCORES

NOTE: The letter in the Programme corresponds with the letter on the Board—thus A 0-1 means that the first-named club has scored 0 and their opponents 1.

FIRST LIST

A Arsenal	Blackpool
B Burnley	Huddersfield
C Cardiff City	Aston Villa
D Chelsea	Wolverh'pton
E Everton	Tottenham H.
F Leicester City	Manchester U.
G Manchester C.	Sunderland
H Newcastle U.	Sheffield Wed.
K Preston N.E.	Bolton W.
L Sheffield Utd.	Charlton Ath.
M West Brom.	Portsmouth
N Birmingham	Plymouth A.

SECOND LIST

A Bury	Swansea T.
B Hull City	Blackburn R.
C Ipswich Town	Bristol Rovers
D Leeds United	Notts. County
E Lincoln City	Fulham
F Middlesbro'	Port Vale
G Notts. Forest	Liverpool
H Rotherham U.	Derby County
K Stoke City	Doncaster R.
L Brentford	Crystal Palace
M Brighton & H.	Northampton
N Bristol City	Bournemouth

THIRD LIST

A Coventry City	Swindon T.
B Gillingham	Colchester
C Leyton O.	Norwich City
D Millwall Ath.	Southend Utd.
E Reading	Exeter City
F Shrewsbury T.	Newport Co.
G Southampton	Aldershot
H Torquay Utd.	Wafford
K Walsall	Q.P.R.
L Accrington	Hartlepoons
M Barnsley	Chesterfield
N Scunthorpe	Darlington

IF IT'S TRAVEL FOR BUSINESS OR PLEASURE

we are here to help you
A Complete Travel Service
... at Your Service

TRAVEL HOUSE

21, Leagrave Rd., Luton
Tele.: 5855/6
202, High Street South
Dunstable Tele.: 100
World Wide Travel Service

**Paint
Wallpaper
Glass
OGDEN & CLEAVER Limited**

Stuart St., Luton
'Phone 746-7

For ALL your
Pharmaceutical
Toilet and
Photographic
Requirements
THOMAS REID, M.P.S.
Pharmaceutical Chemist
169, Dunstable Road
LUTON
(Corner of Kenilworth Road)
'PHONE - - LUTON 760

FIXTURES :: 1954-1955

FIRST XI Division II		Attendance		1953/54		F. A.	
Sat.,	Aug. 21	Notts. Forest	19,832	0	1	H	3 0
Tues.,	24	Bury	15,535	1	0	A	1 2
Sat.,	28	Ipswich Town	20,265	A	1 3
Wed.,	Sept. 31	Bury	13,654	3	2	H	3 2
Sat.,	4	Birmingham City	16,347	2	0	H	1 0
Wed.,	8	Lincoln City	13,390	1	1	A	2 1
Sat.,	11	Middlesbrough	15,891	A	2 0
Wed.,	15	Lincoln City	11,972	1	0	H	2 1
Sat.,	18	Stoke City	17,325	0	1	H	3 1
Sat.,	25	Rotherham United	17,114	1	2	A	0 2
Sat.,	Oct. 2	Derby County	17,156	2	1	H	2 0
Sat.,	9	Bristol Rovers	30,623	3	3	A	2 3
Sat.,	16	Plymouth Argyle	15,059	2	1	H	3 1
Sat.,	23	Fulham	33,500	1	5	A	1 3
Sat.,	30	Swansea Town	15,555	2	0	H	1 2
Sat.,	Nov. 6	Notts. County	10,395	2	1	A	3 3
Sat.,	13	Liverpool	15,887	H	3 2
Sat.,	20	West Ham United	23,034 (1)	0	1	A	1 2
Sat.,	27	Blackburn Rovers	17,314	2	1	H	7 3
Sat.,	Dec. 4	Port Vale	14,052	A	1 1
Sat.,	11	Doncaster Rovers	14,541 (2)	2	0	H	3 0
Sat.,	18	Nottingham Forest	11,943	1	2	A	5 1
Sat.,	25	Hull City	15,853	3	1	H	1 1
Mon.,	27	Hull City	39,890	2	1	A	4 0
Sat.,	Jan. 1	Ipswich Town	16,581	H	3 2
Sat.,	8	Workington (F.A. Cup-3)	18,853	H	5 0
Sat.,	22	Middlesbrough	13,372	H	2 0
Sat.,	29	Rotherham U. (F.A. Cup-4)	21,231	A	5 1
Sat.,	Feb. 5	Stoke City	21,156	1	1	A	0 0
Sat.,	12	Rotherham United	18,450	1	1	H	4 0
Sat.,	19	Manchester C. (F.A. Cup-5)	23,104	H	0 2
Wed.,	March 2	Derby County	5,987	2	1	A	0 0
Sat.,	5	Plymouth Argyle	25,975	2	2	A	1 2
Sat.,	12	Fulham (6)	17,966	1	2	H	3 0
Sat.,	19	Swansea Town	19,422	1	1	A	1 2
Sat.,	26	Notts. County	16,917	2	1	H	3 1
Sat.,	April 2	Liverpool	30,710	A	4 4
Fri.,	8	Leeds United	...	1	1	H	...
Sat.,	9	West Ham United	...	3	1	H	...
Mon.,	11	Leeds United	...	1	2	A	...
Sat.,	16	Blackburn Rovers	...	0	2	A	...
Wed.,	20	Birmingham City	...	1	5	A	...
Sat.,	23	Port Vale	H	...
Wed.,	27	Bristol Rovers	...	1	1	H	...
Sat.,	30	Doncaster Rovers	...	3	1	A	...

RESERVE FIXTURES		Combination Cup		Attendance		1953/54		F. A.	
Wed.,	Aug. 25	Coventry City	...	2,833	2	0	H	2 2	
Sat.,	28	Northampton T.	...	3,045	1	2	H	8 2	
Mon.,	30	Coventry City	...	2,759	1	4	A	0 3	
Sat.,	Sept. 4	Watford	...	3,417	1	2	A	2 4	
Wed.,	8	Birmingham City	...	1,999	4	0	H	4 2	
Sat.,	11	Watford	...	3,109	2	1	H	4 1	
Wed.,	15	Birmingham City	...	1,638	1	1	A	3 0	
Sat.,	18	
Wed.,	22	Norwich City	...	3,667	0	0	A	1 4	
Sat.,	25	Leicester City	...	1,913	2	1	A	3 1	
Wed.,	29	Norwich City	...	3,372	2	0	H	2 1	
Sat.,	Oct. 2	Ipswich Town	...	3,814	4	1	A	0 0	
Wed.,	6	Leicester City	...	3,398	3	4	H	2 2	
Sat.,	9	Ipswich Town	...	3,298	1	2	H	3 0	
Thurs.,	14	Northampton Town	...	360	3	1	A	2 0	
Football Combination									
Sat.,	Oct. 16	Charlton Athletic	...	1,216	1	1	A	1 1	
Sat.,	23	Norwich City	...	2,779	2	1	H	6 1	
Sat.,	30	Bournemouth	...	3,251	2	2	A	4 0	
Sat.,	Nov. 6	Arsenal	...	4,010	5	3	H	1 6	
Sat.,	13	West Ham United	...	4,304	0	1	A	0 1	
Sat.,	20	Coventry City	...	1,873	H	7 0	
Sat.,	Dec. 4	Portsmouth	...	3,221	4	2	H	4 1	
Sat.,	18	Birmingham City	...	2,701	H	2 2	
Sat.,	25	Norwich City	...	911	1	1	A	2 3	
Mon.,	27	Bristol City	...	3,197	A	0 2	
Sat.,	Jan. 1	Brighton & Hove	...	1,683	A	3 1	
Sat.,	22	Portsmouth	...	3,031	2	2	A	5 2	
Sat.,	29	Millwall Athletic	...	3,292	5	1	H	5 0	
Sat.,	Feb. 5	West Ham United	...	4,399	2	1	H	2 4	
Sat.,	12	Arsenal	...	3,595	3	2	A	1 1	
Wed.,	March 2	Bournemouth	...	463	2	2	H	2 3	
Sat.,	5	Birmingham City	...	2,910	A	1 2	
Mon.,	7	Chelsea	...	285	0	0	A	2 1	
Thurs.,	17	Cardiff City	...	2,115	4	0	H	3 1	
Sat.,	19	Tottenham H.	...	3,153	2	1	H	2 1	
Thurs.,	31	Charlton Athletic	...	2,510	3	2	H	4 2	
Sat.,	April 2	Bristol City	...	3,260	H	0 2	
Mon.,	4	Tottenham Hotspur	...	0	0	A	...	1 1	
Fri.,	8	Coventry City	A	...	
Mon.,	11	Leicester City	5	2	H	...	
Sat.,	16	Chelsea	2	2	H	...	
Mon.,	18	Brighton & Hove	H	...	
Mon.,	25	Cardiff City	2	1	A	...	
Thurs.,	28	Leicester City	4	3	A	...	
Sat.,	30	Millwall Athletic	3	1	A	...	

NEXT MATCHES

Easter Monday, 11th April
FOOTBALL COMBINATION
Luton Res. v. Leicester Res.
Kick-Off 3.15 p.m.
Usual Reserve Team Prices of Admission

Saturday, 16th April :: Kick-Off 3 p.m.
FOOTBALL COMBINATION
Luton Res. v. Chelsea Res.
Usual Reserve Team Prices of Admission

Monday, 18th April :: Kick-Off 6.15 p.m.
FOOTBALL COMBINATION
Luton Res. v. Brighton Res.
Usual Reserve Team Prices of Admission

Friday, 22nd April :: Kick-Off 7 p.m.
YOUTH CHAMPIONSHIP—SEMI-FINAL
Beds. v. Staffordshire

Saturday, 23rd April :: Kick-Off 3 p.m.
FOOTBALL LEAGUE—DIVISION II
LUTON T. v. PORT VALE
Usual First Team Prices of Admission

LEAGUE TABLE : 1954-1955

Up to and including Saturday, 2nd April, 1955
FOOTBALL LEAGUE—Division 2

	Pld.	Won	Drn.	Lost	For	Agst	P.
LUTON TOWN	34	19	6	9	76	45	44
Blackburn Rov.	36	20	4	12	107	73	44
Leeds United	36	19	5	12	57	50	43
WEST HAM U.	34	17	8	9	69	56	42
Stoke City	34	16	9	9	56	40	41
Birmingham C.	33	16	8	9	68	37	40
Notts. County	35	18	4	13	63	62	40
Rotherham Utd.	33	17	4	12	73	57	38
Bristol Rovers	35	16	6	13	67	61	38
Middlesbrough	35	17	4	14	64	66	38
Liverpool	34	14	7	13	77	77	35
Swansea Town	34	13	8	13	70	69	34
Fulham	34	13	8	13	67	66	34
Notts. Forest	34	14	5	15	46	49	33
Bury	34	12	8	14	63	63	32
Hull City	34	10	9	15	39	52	29
Doncaster Rov.	34	12	5	17	48	75	29
Lincoln City	34	10	8	16	58	70	28
Plymouth A.	36	10	7	19	51	73	27
Port Vale	34	8	10	16	37	60	26
Ipswich Town	35	9	4	22	51	83	22
Derby County	36	6	9	21	47	68	21

G. A. WILD & SONS

The Town's
Leading Sports Outfitters
14, Manchester Street - Luton

'Phone No. 780

Also at

103, High Street North, Dunstable

'Phone No. 275

Suppliers to the Luton Town Football Club

Your Goal

FOR ALL LEADING MAKES OF SPORTS GOODS

Football Jerseys, Shirts, Knicks, Hose, in all colours and designs ;
Goalkeepers' Sweaters, Anklets, Kneecaps, Athletic Vests, and
Judo Suits, all made by the famous "Umbro" Sportswear

See the new "Litesome" Tracksuits
in the two colour design, fitted with shower proof shoulders

STOCKS OF Embekay CMBT, 1934, "Billy Wright" Autograph, and the new
fabulous football shoe

Manfield "United," "Hotspur" and "Villan," "Cotton Oxford," "Tom Finney"
Autograph, "Kingswell," Shillcock "McGregor" and "Featherweight,"

"Arthur Rowe" Streamline and Slimline

Training Boots by Fleetfoot at 27/6 and 37/7 per pair

Club Secretaries : Now is the time to see our full range of Cricket and Tennis
equipment. Write to our Representative if you are in the Hertfordshire or
Cambridgeshire area. He will be pleased to call and show our wide selection :

MR. P. J. WHITTINGHAM, "HIGH PINES," BRIARY WOOD LANE,
WELWYN HEATH, Near WELWYN, Herts. 'Phone : WELWYN 114

Bats, Balls, Stumps, Practice Nets of all shapes and sizes, Batsman and
Wicketkeeper Pads, Caps, Club Blazers and Badges, Flannels, Socks, Boots,
Abdominal Protectors, Batsman and Wicketkeeping Gloves, Crease Markers,
Sight Screens, Ground Markers, etc., etc.

After the Match :

Visit our New Upstairs Showroom and see our wonderful range of
LADIES' HANDBAGS, SHOULDER BAGS and TRAVEL GOODS
Come and give the Wife a Treat