

TOTTENHAM HOTSPUR
FOOTBALL AND ATHLETIC
COMPANY LIMITED



AERIAL VIEW OF THE SPURS GROUND

FOOTBALL ASSOCIATION CHALLENGE CUP
SEMI-FINAL TIE

SATURDAY, MARCH 14th, 1959

LUTON TOWN
v.
NORWICH CITY

Kick-off 3.30 p.m.

THE OFFICIAL **6^{D.}** PROGRAMME

TOTTENHAM HOTSPUR FOOTBALL & ATHLETIC CO. LIMITED

Chairman: FRED J. BEARMAN

Vice-Chairman: FREDK. WALE

Directors:

F. JOHN BEARMAN, D. H. DEACOCK, S. A. WALE

Secretary: R. S. JARVIS

Manager: W. E. NICHOLSON

Medical Officer: DR. A. E. TUGHAN

Vol. LII. No. 45.

SATURDAY, 14th MARCH, 1959

TO-DAY'S SEMI-FINAL

This afternoon it is our pleasure to give a hearty welcome to Norwich City and Luton Town, who are here in the Semi-final of the F.A. Challenge Cup, the last stage on the road to Wembley for the Final tie which is to be played on May 2nd. It is a great occasion for the two competing clubs and their supporters, as it is also for the other Semi-finalists, Nottingham Forest and Aston Villa, who are engaged at Hillsborough, the ground of the Sheffield Wednesday F.C. Whatever the outcome of to-day's match, it will be a proud event in the history of all clubs and especially for Norwich City and Luton Town, who have reached the Semi-final for the first time in their histories.

It has been truly said that there is no other competition like the F.A. Cup which brings fresh interest to all who follow the game every season, and its launching, back in the year 1871, has been described as "a move of sheer genius, an idea calculated to give football just that little touch, that little incentive to bring life and colour to its cheeks". The Football League, that other great national competition, was not founded until 1888, and the Challenge Cup was the first to give organised competitive football to the country. Previously matches had been on a friendly basis, and we are told that "players either turned up or they did not".

The scene has changed greatly since 1871, when in placid Victorian England 14 clubs entered for the Cup, and no one could have dreamed then of the vast concourse of supporters that will assemble to-day with television cameras, sound broadcasting microphones, and film cameras in attendance to make a record of the event for those unable to witness the match. "All-ticket" matches are now a regular feature of Cup-ties and were introduced after the Cup Final at Wembley in 1923. For to-day's match the attendance will be limited to 66,000 so that there should be ample room for all to see the game in comfort, but once again we ask spectators to help by "packing down" towards the playing field to make room for the latecomers. In the event of the scores being level at 90 minutes extra time of half an hour will be played.



LUTON TOWN F.C.

Luton Town F.C. have written a new and happy page in their history this season by reaching the Semi-final stage of the Cup competition for the first time in their history, which is a story of progress dating back to 1885 when they were founded as an amalgamation of "Luton Wanderers" and "Luton Excelsior". They were, incidentally, the first club in the South to adopt professionalism.

Luton's membership of the Football League dates back to 1897, but after two seasons in Division II they did not seek re-election, their tenuous finances in those days being unduly strained by the travelling involved, and they returned to the Southern League to remain in membership with them until 1920 when the Football League was extended, and Luton were elected to Division III. In season 1936-37 came their first great triumph in the League when they were promoted to Division II, and in season 1954-55 they realised their ultimate ambition in League football by winning promotion to Division I. In that exciting season the result was in balance until the closing matches of the campaign, and finally there were three clubs at the head of Division II with 54 points each. Goal average was the deciding factor, and Luton were placed second to Birmingham City with Rotherham United in third place. Although, as stated above, the "Hatters" did not seek re-election in 1900, they can rightly claim never to have suffered the indignity of relegation.

Luton's best performances in the Cup previously have been in seasons 1932-33 and 1951-52, when they reached the Sixth Round. Ten years ago, in 1948-49, they featured with Leicester City in a remarkable tally of goalscoring when the pair, from the original tie and replay in the Fifth Round, scored 18 goals between them. The first tie resulted in a drawn game 5-5 and in the replay Luton lost 5-3 and it was Leicester City who went on finally to Wembley.

Here is the record of Luton's progress in the Cup this season:

- Third Round (home): Beat LEEDS UNITED 5-1.
Goalscorers: Bingham (2), Gregory (2), and Morton.
- Fourth Round (away): Drew with LEICESTER CITY 1-1
Goalscorer: Bingham.
- Replay (home): Won 4-1
Goalscorers: Brown (3) and Gregory.
- Fifth Round (away): Beat IPSWICH TOWN 5-2
Goalscorers: Morton (2), Gregory, Bingham and Pacey
- Sixth Round (away): Drew with BLACKPOOL 1-1
Goalscorer: Bingham
- Replay (home): Won 1-0
Goalscorer: Brown



Back row: Bingham, Hawkes, Morton, Shanks, Dunne, T. S. Mackey (Trainer), McNally, Adam, Middleton, Cummins. Third row: Chambers, Kelly, Smith, Marsh, Owen, Groves, Baynham, McLeod, Folwell, Brown. Second row: F. King (Head Trainer), D. Duncan (former Manager), Messrs. T. Hodgson, F. Tooley, A. F. England (Vice-Chairman), P. G. Mitchell (Chairman), H. S. Hewson, P. W. Wright (Directors), Dr. E. J. Crarer, Mr. P. Coley (Secretary). Front row: Parrin, Pacey, Legate, Turner, D. King, Lesnick.

R. BAYNHAM (goalkeeper)

This tall, well-built player is one of the best keepers in the country. He first played for Worcester City and his great displays attracted the attention of many League clubs. He joined Luton in 1951 and in the 1952-53 season displaced their international goalkeeper Bernard Streten. This proved only the start, for less than two years later Baynham had been capped for England in internationals against Denmark, Spain and Ireland.

SEAMUS DUNNE (right-back)

One of three Eire Internationals on Luton's books, Dunne has been an almost automatic choice for club and country for the past four seasons. He now holds 11 caps and played in the last match against Poland in October. A native of Wicklow he arrived at Luton via the Irish League Club, Shelbourne in 1950.

BRENDAN McNALLY (right-back)

Had only made the occasional appearance in Luton's senior side until Dunne's injury prior to the Third Round of the F.A. Cup versus Leeds on January 10th. Joined Luton from Shelbourne, the Irish League Club.

KEN HAWKES (left-back)

A player who has made considerable strides since returning to the Club after National Service in 1953. Was spotted when he played for Shotton Colliery Welfare by Club's Northern Scout and made a big impression. Last season made 22 first team appearances.

JOHN GROVES (right-half)

Originally an inside-forward Groves has filled both centre forward and wing-half positions with equal success since he joined Luton upon leaving school. Tall and fast, he distributes the ball accurately.

SYD OWEN (centre-half)

Luton's first team centre-half for many years now. An imposing figure on any soccer field he has won many representative honours including full internationals against Hungary, Yugoslavia and Belgium in 1954 since joining the Club from Birmingham City in 1947. Was originally a wing-half.

DAVID PACEY (left-half)

Made his name with Hitchin Town and was still an amateur when he joined the forces. Joined Luton as a professional in August 1956. Gained a regular first team place when Pearce moved to Sunderland last season.

BILLY BINGHAM (outside-right)

Luton paid a five figure fee to Sunderland for the transfer of Irish International Billy Bingham last July. Has represented his country, Ireland, in every International game since 1952.

ALLAN BROWN (inside-right)

A Scottish International with 14 caps to his credit Brown was transferred from Blackpool to Luton during the 1956-57 season. Began his League career with East Fife.

BOB MORTON (centre-forward)

Has appeared in the League side at centre-forward during the last few matches but of course is well known as one of the strongest and most consistent wing-halves in the First Division. Was chosen as Reserve for England versus Russia at Wembley this season.

GEORGE CUMMINS (inside-left)

The third of Town's Eire internationals, Cummins joined Luton from Everton for a five figure fee in 1953. Since then has won 10 caps, the last being against Poland in October last year.

TONY GREGORY (outside-left)

A local boy who played for Bedfordshire's youth team, earned youth caps for England and was also a member of Bedfordshire's team in the Southern Counties Amateur Championship. Is in his fourth season with the Club. Has recently become a full-time professional player upon completing his apprenticeship at a local motor works.

TERRY KELLY (centre- or wing-half)

A local boy who on the occasions he has been called upon to deputise for either Morton or Owen has always given a good account of himself. Is also a fine club cricketer.

GORDON TURNER (inside-right)

A free-scoring forward. Turner scored 30 goals last season. Has played for the Football League and been a reserve for the England "B" team.

LUTON TOWN

COLOURS : WHITE SHIRTS
BLACK SHORTS

RIGHT WING

LEFT WING

BAYNHAM
GOAL

MacNALLY
RIGHT-BACK

HAWKES
LEFT-BACK

GROVES
RIGHT-HALF

OWEN (Capt.)
CENTRE-HALF

PACEY
LEFT-HALF

BINGHAM
OUTSIDE-RIGHT

BROWN
INSIDE-RIGHT

MORTON
CENTRE-FORWARD

CUMMINS
INSIDE-LEFT

GREGORY
OUTSIDE-LEFT

REFEREE:

Mr. W. HICKSON
(Lancs.)



LINESMEN:

Mr. R. T. E. LANGDALE, (Durham) Red Flag
Mr. D. W. SMITH, (Glos.) Yellow Flag

BRENNAN
OUTSIDE-LEFT

HILL
INSIDE-LEFT

BLY
CENTRE-FORWARD

ALLCOCK
INSIDE-RIGHT

CROSSAN
OUTSIDE-RIGHT

CROWE
LEFT-HALF

BUTLER
CENTRE-HALF

McCROHAN
RIGHT-HALF

ASHMAN (Capt.)
LEFT-BACK

THURLOW
RIGHT-BACK

LEFT WING

KENNON
GOAL

RIGHT WING

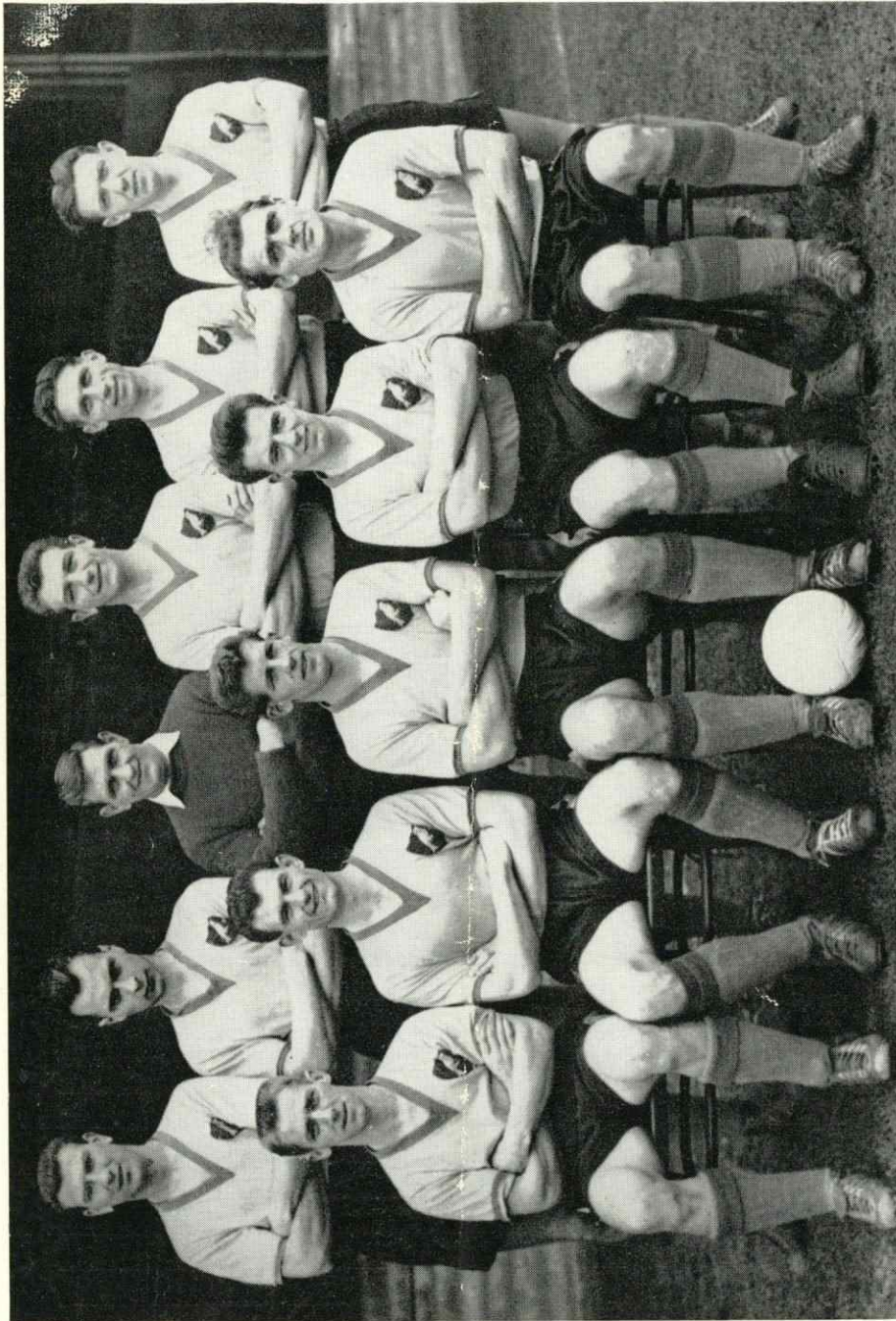
COLOURS : YELLOW SHIRTS, Green Collars and Cuffs
BLACK SHORTS

NORWICH CITY

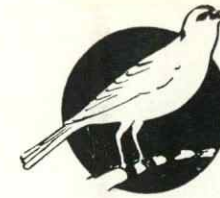
HALF-TIME SCORES IN OTHER MATCHES

A	Nottingham Forest v. Aston Villa	J	West Bromwich Alb. v. Manchester United	R	Stoke City v. Cardiff City
B	Arsenal v. Blackburn Rovers	K	Bristol Rovers v. Rotherham United ...	S	Sunderland v. Bristol City
C	Birmingham City v. Wolverhampton Wand.	L	Derby County v. Sheffield United	T	Swansea Town v. Huddersfield Town ...
D	Burnley v. West Ham United	M	Fulham v. Middlesbrough	U	Brentford v. Reading
E	Everton v. Blackpool	N	Ipswich Town v. Barnsley	V	Halifax Town v. Queen's Park Rangers ...
F	Leeds United v. Tottenham Hotspur ...	O	Leyton Orient v. Brighton & Hove Albion	W	Southampton v. Southend United
G	Leicester City v. Chelsea	P	Lincoln City v. Charlton Athletic	X	Barrow v. Crystal Palace
H	Manchester City v. Newcastle United ...	Q	Scunthorpe United v. Grimsby Town ...	Y	Gateshead v. Watford

NORWICH CITY F.C.



Back row, left to right: McCrohan, Thurlow, Nethercott, Butler, Ashman and Crowe. Front row: Crossan, Allcock, Bly, Hill and Brennan.



NORWICH CITY F.C.

The Norwich City Club, who have brought joy to all their many supporters in East Anglia by reaching the Semi-final stage of the Cup, were founded in the year 1905, when they were elected at once to the Southern League. In 1920 when the Football League was extended they were elected to membership of Division III, and in the following season when the Third Division was extended again, and the Third Division sub-divided, they were transferred to the Third (South). Season 1933-34 saw their great day in League football when they were acclaimed as Champions of the Third South, and won promotion to Division II, retaining their status until 1938-39 when, on the eve of the Second World War, they were relegated to Division III (South), being bracketed with Nottingham Forest in the second place from the foot of the table with 31 points, but a slightly inferior goal average to that of the Forest. The war years saw a complete close-down of football in Norwich, and in the post-war years their best performance in the League was in 1950-51 when they were runners-up to Nottingham Forest with 64 points.

It is perhaps as doughty performers in the Cup that we remember the "Canaries" best, and they have had many meritorious triumphs to their credit, including wins over Sheffield Wednesday (1908), Liverpool (1909), Sunderland (1909), and ourselves in 1915 when they were "non-Leaguers". Apart from the present, their most memorable season was in 1934-35 when they reached the Sixth Round and played Sheffield Wednesday at Norwich. In a close-fought game they were narrowly defeated by the Wednesday from a goal by Rimmer 16 minutes from time, and the Sheffield club went on to win the Final ultimately by defeating West Bromwich Albion 4-2 at Wembley. The Norwich team on that day was: Jones; Halliday, Bowen; Robinson, Scott, Lochhead; Kirchen, Burditt, Vinall, Houghton, Russell.

The following is the record of the City's progress to the Semi-final this season:

- First Round (home): Beat ILFORD 3-1
Goalscorers: Brennan (2) and Hill
- Second Round (away): Drew with SWINDON 1-1
Goalscorer: Hill
- Replay (home): Won 1-0
Goalscorer: Crossan
- Third Round (home): Beat MANCHESTER UNITED 3-0
Goalscorers: Bly (2) and Crossan
- Fourth Round (home): Beat CARDIFF CITY 3-2
Goalscorers: Bly (2) and Crossan
- Fifth Round (away): Drew with TOTTENHAM HOTSPUR 1-1
Goalscorer: Allcock
- Replay (home): Won 1-0
Goalscorer: Bly
- Sixth Round (away): Drew with SHEFFIELD UNITED 1-1
Goalscorer: Crossan
- Replay (home): Won 3-2
Goalscorers: Bly (2) and Brennan

THE PLAYERS

K. NETHERCOTT (goalkeeper)

Although he has been with Norwich since 1947, Ken Nethercott has not always been a regular first-team choice. Nethercott signed professional forms at Carrow Road in 1947 and is an England "B" international. He made his 400th League and Cup appearance for the club on November 22nd last. Was unfortunately injured in the Sixth Round Cup-tie with Sheffield United when he dislocated his shoulder.

N. KENNON (goalkeeper)

Generally known as "Sandy", Neil Kennon came to this country from South Africa three years ago. Made 80 Second Division appearances for Huddersfield Town. He stands 6 ft. 2 in. and weighs 12 stone. Came to Norwich on a month's trial in February, and played his first game in the replayed Cup-tie against Sheffield United on Wednesday, March 4th, due to Nethercott's injury.

B. THURLOW (right-back)

The switch of Roy McCrohan to right-half in December opened the way for Brian Thurlow to settle down in the right-back position. A native of Lodon, Norfolk, Thurlow joined the Carrow Road staff as an amateur on leaving school, becoming a professional in 1954.

R. ASHMAN (left-back)

Captain, and the club's longest-serving player, Ron Ashman signed on in 1944. This season he has operated exclusively at full-back but was signed as a centre-forward, though he did not produce his best form until moving to left-half, and more recently to his present role. He hails from Whittlesey, in the Isle of Ely.

R. McCROHAN (right-half)

Another Norwich player who is a useful utility man. He joined Norwich in 1951, and operated at inside-forward or on the right wing, was later switched to wing-half, and began this season at right-back before taking over in his present berth.

B. BUTLER (centre-half)

Barry Butler was with Sheffield Wednesday for five years before joining the Carrow Road staff in the summer of 1957. Butler stands 6 ft. 1 in., and weighs more than 12 stone, has yet to miss a single match, played in all 46 League fixtures last winter and is again an ever-present this term.

M. CROWE (left-half)

Matt Crowe has been an outstanding member of the rearguard in recent matches. A Scot from Bathgate, he played for Partick Thistle before moving

to Carrow Road in 1957. Originally an inside-forward but was switched to left-half, where he was an immediate success.

E. CROSSAN (outside-right)

Errol Crossan came to this country from his native Montreal and has played for four clubs in under five years. He began his career with Manchester City in 1954 and after a season joined Gillingham, then moved to Southend in the summer of 1957, and was signed by Norwich on September 26th last.

T. ALLCOCK (inside-right)

Terry Allcock has just completed a year's service with Norwich, was signed from Bolton Wanderers and played chiefly at centre-forward in his five years at Burnden Park. He was moved to inside-right in December, and has scored consistently.

T. BLY (centre-forward)

The hero of Norwich City's Cup run so far has been Terry Bly, who only recently made a come-back after a long spell on the injured list. He comes from nearby Fincham, has been a consistent goalscorer in his club's Cup-ties. Signed professional forms a fortnight before the start of the 1956-57 season.

J. HILL (inside-left)

After losing his place on the right wing to Errol Crossan in September, Jimmy Hill regained senior status in his present position two months later. Was with Newcastle before joining Norwich during the past close-season.

R. BRENNAN (outside-left)

Much-travelled Bobby Brennan hails from Belfast, and won Irish international honours while with Luton, whom he joined from Distillery in 1949. Was with Birmingham and Fulham prior to moving to Norwich in 1953. At the end of the 1956-57 season he went to Yarmouth, but returned to Carrow Road two years ago.

D. LYTHGOE (inside-forward)

Despite the fact that he has been out of the Norwich League side since early in November, Derek Lythgoe is still well up among their leading scorers. He was signed from Blackpool just before the transfer deadline became effective in March last year. Equally at home in either inside-forward position.

R. WILSON (wing-half)

Apart from Barry Butler, the only ever-present in the Norwich team last season was Bob Wilson at right-half. Wilson was also first choice this term until mid-October. He has subsequently been unable to win back his place, and has made only one further senior appearance in the left-half berth.



LUTON TOWN v. BLACKPOOL

Alan Brown scoring the only goal of the game for Luton in the Sixth Round replay with Blackpool at Luton on Wednesday, March 4th, 1959.



TOTTENHAM HOTSPUR v. NORWICH CITY

Allcock, the Norwich inside-right, flies through the air as Hollowbread, the Spurs' goalkeeper, comes out to save, with Bly, the Norwich centre-forward, following up in the Fifth Round at White Hart Lane, Tottenham.

TOTTENHAM HOTSPUR CLUB NOTES

As one-third of the tickets for to-day's match have been distributed among Spurs' supporters some notes from the Club angle may not be amiss.

We were all cheered by the resounding win 6—0 over Leicester City last Saturday, when our players returned to scoring form to give them one of their most decisive victories, and this, following on the valuable point gained at Wolverhampton on March 2nd, has been encouraging to the players and supporters equally. To-day our League side is at Elland Road, Leeds, where they meet the United in the return match for that played here on October 25th when Leeds were the winners by 3 goals to 2, a result our players will be anxious to reverse.

Our Reserves last Saturday came a cropper at Birmingham, losing by 5 goals to nil. The opening stages were in favour of our players, but three promising chances were not taken and the City then established supremacy. Leicester City, winning 2—0, are still at the head of the Combination table with 40 points with ourselves in second place with two matches in hand. Chelsea Reserves are now level with us with 36 points by virtue of their win 3—2 at Swansea.

In the Eastern Counties League our "A" team last Saturday gave a good account of themselves, winning by 5 goals to 1 against Stowmarket. To-day they play Lowestoft in the second leg of the Eastern Counties League Cup Semi-final, at Cheshunt, and as Lowestoft won the first match 4—1 our "A" team will need to be in scoring form to-day to come out with the better aggregate of goals.

Make a note that our Football League match with Burnley has now been brought forward to Wednesday, April 8th, kick-off at 7.30 p.m. Originally this match was down for April 22nd, but this being the date when Ireland play Wales with the possibility of calls on the players of both clubs for international duties the fixture has, by mutual consent, been brought forward.

Next Wednesday evening (March 18th) our Reserves will have a home fixture with Nottingham Forest in the Football Combination. The kick-off will be at 7 p.m. This is the fixture postponed from January 24th. The Combination fixtures with Cardiff City (from February 14th) and with Luton Town (from to-day) have still to be arranged. We should mention that the fixture on Wednesday is dependent upon the Forest's being clear of any replay from to-day's Semi-final with Aston Villa.

Programme of Music by the Spurs Band

President: FRED. J. BEARMAN, Esq.

Conductor: Mr. J. R. GILL

1	March	"OLD COMRADES"	Teike
2	Waltz Song	"AROUND THE WORLD"	Victor Young
3	Cornet Duet	"SANDY & JOCK"	Sutton
<i>Duetlists: L. Rayner and L. Tyrrell</i>					
4	Polka	"THUNDER AND LIGHTNING"	Strauss
5	Excerpts from	"OKLAHOMA"	Rodgers
6	March Theme	"ICE COLD IN ALEX"	Leighton Lucas
7	Euphonium Solo	"AUTUMN LEAVES"	Kosma & Prevert
<i>Soloist: S. V. Tyrrell</i>					
8	Tunes from	"MY FAIR LADY"	Fredk. Lowe
9	Descriptive	"TRUDIE"	Henderson
10	March	"ENTRY OF THE GLADIATORS"	Fucik

ACKNOWLEDGMENTS FOR PHOTOGRAPHS

Luton Town F.C.	Home Counties Newspapers Ltd., Luton
Norwich City F.C.	P.A.-Reuter Photos Ltd., London, E.C.4
Luton Town v. Blackpool	Home Counties Newspapers Ltd., Luton
Tottenham Hotspur v. Norwich City	Sport & General Press Agency Ltd., London, E.C.4
Aerial View of Spurs' Ground	Aero Pictorial Ltd., London, W.1