

THE FOOTBALL ASSOCIATION CHALLENGE CUP COMPETITION

# FINAL TIE

**LUTON TOWN**

V

**NOTTINGHAM FOREST**

SATURDAY, MAY 2nd, 1959

KICK-OFF 3 pm



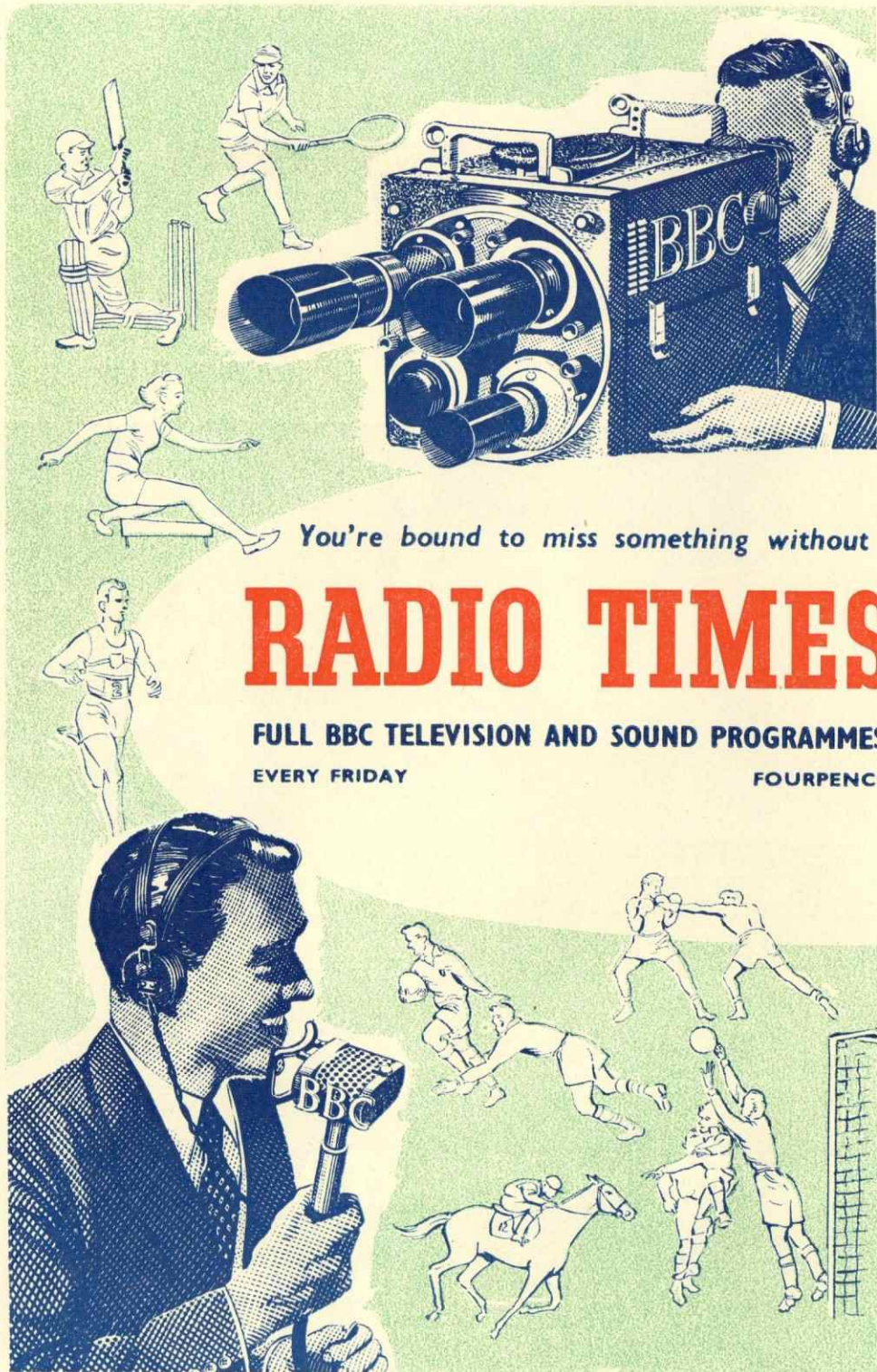
**EMPIRE STADIUM**

**WEMBLEY**

OFFICIAL PROGRAMME

ONE SHILLING





*Welcome to Our Royal Visitors*

**Her Majesty The Queen**  
*Patron of The Football Association*



**His Royal Highness  
 The Prince Philip**  
**Duke of Edinburgh, K.G., K.T.**  
*Past President of The  
 Football Association*



# Luton, the Pioneers

By HAROLD MAYES

**Y**EARS of anxious waiting make pride in achievement all the more satisfying when the great moment comes. And today marks such an occasion for Luton Town, whose 74 years of existence culminates with a first-ever appearance in a F.A. Cup Final. That surely is a fitting reward for endeavour and enterprise, patience as well as persistence, by a club on which the glare of the spotlight has so seldom fallen, but which, like so many of the less glamorised outfits, can truly count itself as part of the backbone of the English soccer system.

When honours of one kind or another come round with a fair degree of frequency, it is comparatively easy for a club to hold a fervent following. But when outstanding success passes a team by in season after season, it is a far harder task to maintain an avid interest, and for a club's officials to continue to provide a side giving a high standard of playing entertainment.

That is something, however, which Luton Town have managed to do, although on only two occasions before today have their supporters had the opportunity for jubilation and rejoicing, beaten on the post in that desperately difficult task of gaining promotion from the Third Division of the Football League in 1936, the "Hatters" compensated handsomely for that disappointment when they achieved Second Division status in the following year.

Eight years later, in 1955, promotion came again, this time to the First Division, when, in a thrilling finish, they joined Birmingham City in edging out Rotherham United in a goal average tussle.

## ● THEIR ZENITH

Twice promoted, never relegated, and today Luton reach their zenith with a Wembley appearance which is clearly indicative of the strides the club has made, since it comes after only four years as a top-flight outfit.

But while solidity rather than flamboyance has characterised the club's activities in the modern era, no one can accuse its founders of being lacking in foresight, or, for that matter, of that vital sporting attribute we so vaguely refer to as colour.

For at the Town Hall meeting on April 11, 1885, which resulted in the passing of a resolution that "The Luton Town Club be formed," it was decreed that the colours should be "Navy Blue and Pink Halves for both shirts and caps, and that both shirt and cap be worn by each player on the field."

The club came into existence through the amalgamation of two clubs in the Bedfordshire town, The Wanderers and The Excelsiors, and so complete and amicable was the fusion that the composition of the first Town team was on a basis of six playing members from one team and five from the other, with the balance of power sometimes being in favour of one and sometimes of the other.

Prior to the amalgamation, The Wanderers had made the greater strides, having already entered for the F.A. Cup competition, and having played a tie against Old Etonians. And at that first meeting of Luton Town, challenges were issued to such clubs as Old Etonians, Old Foresters, Old Wykehamists, Old Westminsters, Grove House, Prairie Rangers, Wellingborough Grammar School, Hotspur, and Berks and Bucks—in fact, the best sides in southern football of the day.

It was, appropriately enough, at Wembley Park in May, 1893, that Luton began their climb to fame by beating Old Westminsters in the F.A. Cup. Came a period of Southern League football from the inception of that competition, a spell in the Second Division of the Football League, more Southern League fare, and then the Football League.

A far cry, indeed, to Luton's day of days, with its team appearing in the nation's greatest soccer showpiece, but proof that all the effort through the years has been worthwhile.

And as good a reason as any why Syd Owen and his men will be all out to prove that the nineteenth century planners did not pioneer in vain, even though boaters, the town's trade mark, will be so much more in evidence today than navy blue and pink halved caps.

## HOW LUTON TOWN REACHED WEMBLEY

### Third Round (home)

Attendance 18,354  
LUTON TOWN 5, Leeds United 1  
(Bingham 2,  
Gregory 2, Morton)

### Fourth Round (away)

Attendance 36,984  
Leicester City 1, LUTON TOWN 1  
(Bingham)

### Fourth Round (replay)

Attendance 27,277  
LUTON TOWN 4, Leicester City 1  
(Brown 3, Gregory)

### Fifth Round (away)

Attendance 26,700  
Ipswich Town 2, LUTON TOWN 5  
(Morton 2, Gregory,  
Bingham, Pacey)

### Sixth Round (away)

Attendance 30,634  
Blackpool 1, LUTON TOWN 1  
(Bingham)

### Sixth Round (replay)

Attendance 30,069  
LUTON TOWN 1, Blackpool 0  
(Brown)

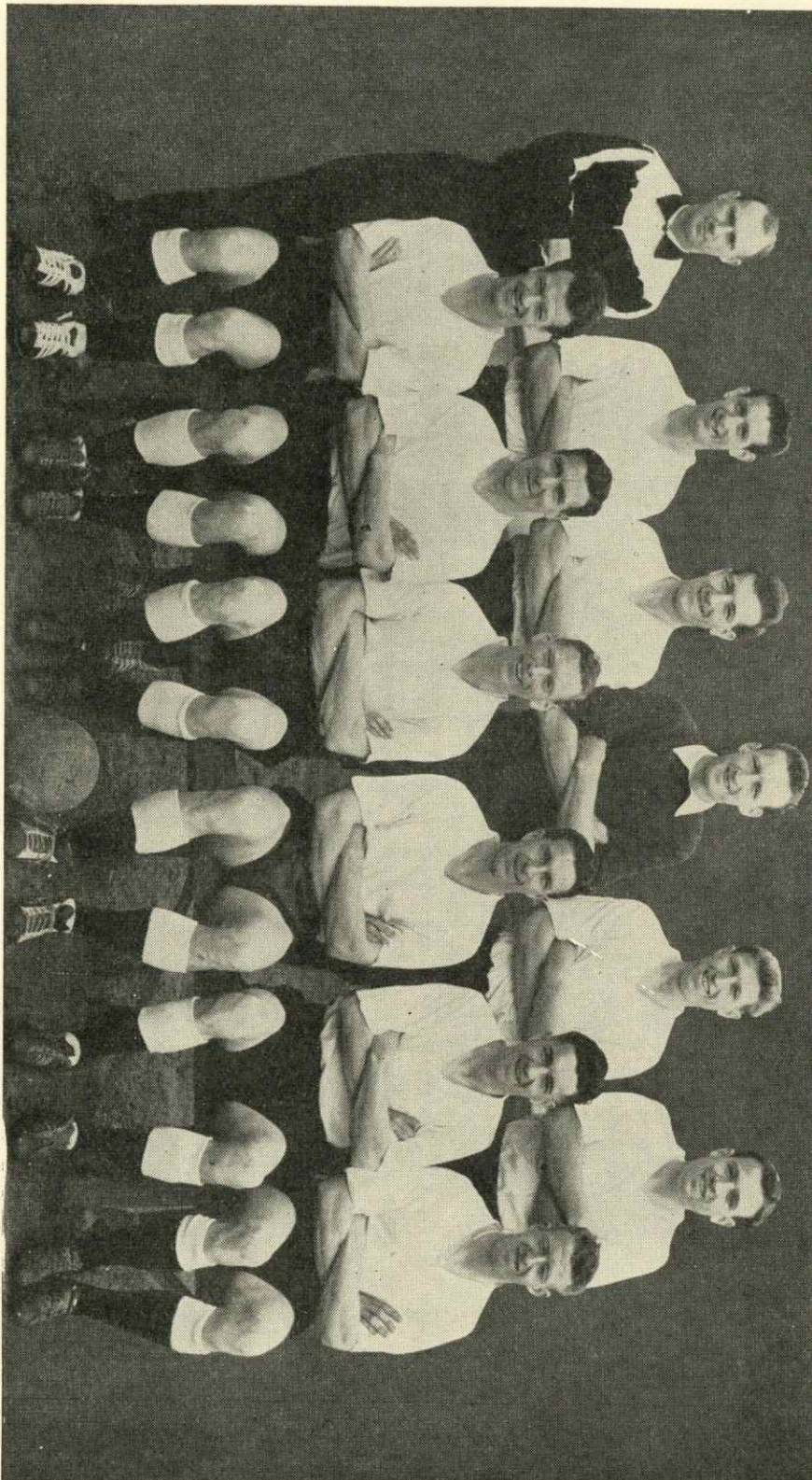
### Semi-Final (at White Hart Lane, Tottenham)

Attendance 63,500  
LUTON TOWN 1, Norwich City 1  
(Brown)

### Semi-Final (replay at St. Andrews, Birmingham)

Attendance 49,500  
LUTON TOWN 1, Norwich City 0  
(Bingham)

Back Row (left to right) : FRANK KING (Trainer), JOHN GROVES, BRENDAN McNALLY, RON BAYNHAM, DAVE PACEY, KEN HAWKES  
Front Row (left to right) : BILLY BINGHAM, ALLAN BROWN, SID OWEN, BOB MORTON, GEORGE CUMMINS, TONY GREGORY



LUTON TOWN F.C. 1958-59



# Introducing

# LUTON TOWN

## RON BAYNHAM, Goalkeeper

Birmingham-born, he first made his mark with Worcester City, and during the time he was playing with them attracted the attention of many Football League clubs. Joining Luton in 1951, by the 1952-53 season he was playing well enough to displace international Bernard Streten, and within a couple of years had gained England recognition himself, being capped for matches against Denmark, Spain and Ireland. Height 6 ft., weight 12 st. 2 lb.

## BRENDAN McNALLY, Right Back

An Irishman from Dublin, he made only occasional appearances in Luton's first eleven until Eire international Seamus Dunne was injured just before this season's Third Round F.A. Cup-ties. Since then has played soundly to retain his place. Previously with Irish League club, Shelbourne. Height 5 ft. 10 in., weight 11 st. 10 lb.

## KEN HAWKES, Left Back

A native of County Durham, he was discovered in junior football with Shotton Colliery Welfare, and has made fine progress since completing his National Service in 1953. Height 5 ft. 3 in., weight 11 st. 6 lb.

## JOHN GROVES, Right Half

A native of Derby, he joined Luton straight from school, playing originally as an inside-forward. Filled the centre-forward berth with distinction before finally settling at wing-half. Height 6 ft., weight 11 st. 9 lb.

## SYD OWEN, Centre Half (Captain)

The club's captain, coach and manager-elect, this commanding player graces a football pitch for the last time today. His decision to retire had already been announced before he had assured his team's appearance in the Final, and the match today is a fitting finale to a great career. Birmingham-born, he started his playing career with Birmingham City, originally as a wing-half, but graduated to the middle, and has been Luton's first choice for the position for a number of years. Capped for England against Hungary, Yugoslavia and Belgium in 1954. Height 6 ft., weight 11 st. 10 lb.

## THE F.A. CUP COMPETITION—PAST WINNERS

DATE	WINNING TEAM	LOSING TEAM	SCORE	DATE	WINNING TEAM	LOSING TEAM	SCORE
1871-2	Wanderers ...	Royal Engineers ...	1-0	1910-1†	Bradford City ...	Newcastle United ...	1-0
1872-3	Wanderers ...	Oxford University ...	2-0	1911-2†	Barnsley ...	W. Bromwich Albion ...	1-0
1873-4	Oxford University ...	Royal Engineers ...	2-0	1912-3	Aston Villa ...	Sunderland ...	1-0
1874-5†	Royal Engineers ...	Old Etonians ...	2-0	1913-4	Burnley ...	Liverpool ...	1-0
1875-6†	Wanderers ...	Old Etonians ...	3-0	1914-5	Sheffield United ...	Chelsea ...	3-0
1876-7*	Wanderers ...	Oxford University ...	2-0	1919-20*	Aston Villa ...	Huddersfield Town ...	1-0
1877-8	Wanderers ...	Royal Engineers ...	3-1	1920-1	Tottenham Hotspur ...	Wolverhampton Wan. ...	1-0
1878-9	Old Etonians ...	Clapham Rovers ...	1-0	1921-2	Huddersfield Town ...	Preston North End ...	1-0
1879-80	Clapham Rovers ...	Oxford University ...	1-0	1922-3	Bolton Wanderers ...	West Ham United ...	2-0
1880-1	Old Carthusians ...	Old Etonians ...	3-0	1923-4	Newcastle United ...	Aston Villa ...	2-0
1881-2	Old Etonians ...	Blackburn Rovers ...	1-0	1924-5	Sheffield United ...	Cardiff City ...	1-0
1882-3†	Blackburn Olympic ...	Old Etonians ...	2-1	1925-6	Bolton Wanderers ...	Manchester City ...	1-0
1883-4	Blackburn Rovers ...	Queen's Pk., Glasgow ...	2-1	1926-7	Cardiff City ...	Arsenal ...	1-0
1884-5	Blackburn Rovers ...	Queen's Pk., Glasgow ...	2-0	1927-8	Blackburn Rovers ...	Huddersfield Town ...	3-1
1885-6†	Blackburn Rovers ...	W. Bromwich Albion ...	2-0	1928-9	Bolton Wanderers ...	Portsmouth ...	2-0
1886-7	Aston Villa ...	W. Bromwich Albion ...	2-0	1929-30	Arsenal ...	Huddersfield Town ...	2-0
1887-8	W. Bromwich Albion ...	Preston North End ...	2-1	1930-1	W. Bromwich Albion ...	Birmingham ...	2-1
1888-9	Preston North End ...	Wolverhampton Wan. ...	3-0	1931-2	Newcastle United ...	Arsenal ...	2-1
1889-90	Blackburn Rovers ...	Sheffield Wednesday ...	6-1	1932-3	Everton ...	Manchester City ...	3-0
1890-1	Blackburn Rovers ...	Notts County ...	3-1	1933-4	Manchester City ...	Portsmouth ...	2-1
1891-2	W. Bromwich Albion ...	Aston Villa ...	3-0	1934-5	Sheffield Wednesday ...	W. Bromwich Albion ...	4-2
1892-3	Wolverhampton Wan. ...	Everton ...	1-0	1935-6	Arsenal ...	Sheffield United ...	1-0
1893-4	Notts County ...	Bolton Wanderers ...	4-1	1936-7	Sunderland ...	Preston North End ...	3-1
1894-5	Aston Villa ...	W. Bromwich Albion ...	1-0	1937-8*	Preston North End ...	Huddersfield Town ...	1-0
1895-6	Sheffield Wednesday ...	Wolverhampton Wan. ...	3-1	1938-9	Portsmouth ...	Wolverhampton Wan. ...	4-1
1896-7	Aston Villa ...	Everton ...	3-2	1945-6*	Derby County ...	Charlton ...	4-1
1897-8	Notts Forest ...	Derby County ...	3-1	1946-7*	Charlton ...	Burnley ...	1-0
1898-9	Sheffield United ...	Derby County ...	4-1	1947-8	Manchester United ...	Blackpool ...	3-1
1899-1900	Bury ...	Southampton ...	4-0	1948-9	Wolverhampton Wan. ...	Leicester ...	3-1
1900-1†	Tottenham Hotspur ...	Sheffield United ...	3-1	1949-50	Arsenal ...	Liverpool ...	2-0
1901-2†	Sheffield United ...	Southampton ...	2-1	1950-1	Newcastle United ...	Blackpool ...	2-0
1902-3	Bury ...	Derby County ...	6-0	1951-2	Newcastle United ...	Arsenal ...	1-0
1903-4	Manchester City ...	Bolton Wanderers ...	1-0	1952-3	Blackpool ...	Bolton Wanderers ...	4-3
1904-5	Aston Villa ...	Newcastle United ...	2-0	1953-4	W. Bromwich Albion ...	Preston North End ...	3-2
1905-6	Everton ...	Newcastle United ...	1-0	1954-5	Newcastle United ...	Manchester City ...	3-1
1906-7	Sheffield Wednesday ...	Everton ...	2-1	1955-6	Manchester City ...	Birmingham ...	3-1
1907-8	Wolverhampton Wan. ...	Newcastle United ...	3-1	1956-7	Aston Villa ...	Manchester United ...	2-1
1908-9	Manchester United ...	Bristol City ...	1-0	1957-8	Bolton Wanderers ...	Manchester United ...	2-0
1909-10†	Newcastle United ...	Barnsley ...	2-0				

\* After extra time. † After a drawn game.

## DAVID PACEY, Left Half

A native of Luton, he played his first football with Hitchin Town, and was still an amateur when he left for National Service. Joining Luton as a professional in 1956, he gained a regular first team berth last season. Height 5 ft. 8 in., weight 10 st. 12 lb.

## BILLY BINGHAM, Outside Right

The Belfast-born will-o'-the-wisp, who began his playing career with Glentoran, made his mark in English football with Sunderland, who collected a five-figure transfer fee when he joined Luton prior to the start of the present season. It has proved a profitable transaction, since he had figured prominently in the Cup run which brings Luton to the Final for the first time in the club's history. Has worn Ireland's green shirt in every one of his country's matches since 1952. Height 5 ft. 7 in., weight 10 st. 2 lb.

## ALLAN BROWN, Inside Right

A Scot who until now must have doubted whether he would have the opportunity of playing his artistic brand of football on the Wembley turf, having missed a previous Cup Final appearance with Blackpool and an international for Scotland because of a broken leg suffered scoring the goal which took the seaside club to one of their three post-war Finals. Fife-born, he began his career with East Fife, and joined Luton from Blackpool in 1956-57. He has gained 14 international caps for Scotland. Height 5 ft. 11 in., weight 12 st.

## BOB MORTON, Centre Forward

A loyal club player who has probably sacrificed, for the time being at least, his chances of international recognition by moving from wing-half, where, this season, he was England's reserve for the Wembley game against Russia. Born at Aston Clinton, Luton is his only professional club. Height 5 ft. 10 in., weight 11 st. 12 lb.

## GEORGE CUMMINS, Inside Left

Another Irishman from Dublin, who has represented Eire on ten occasions since joining Luton, he was another five-figure fee man when he joined Town from Everton in 1953. Height 5 ft. 8 in., weight 11 st.

## TONY GREGORY, Outside Left

The local boy who made good. Luton-born, he played for Bedfordshire youth team, was a member of the County side in the Southern Counties Amateur Championship, and gained Youth Caps for England. Joined the club from Vauxhall Motors, becoming a full-time professional only recently, after completing his apprenticeship with that firm. Height 5 ft. 11 in., weight 11 st. 13 lb.

## RESERVES

## SEAMUS DUNNE, Right Back

Almost automatic choice for club and country over the last four seasons, this Wicklow-born player, who arrived at Luton from Shelbourne in 1950, has eleven Eire Caps to his credit. Lost his place in the Luton side shortly before the beginning of this season's F.A. Cup run through injury. Height 5 ft. 9 in., weight 11 st. 8 lb.

## TERRY KELLY, Wing Half or Centre Half

Another local boy, and another Vauxhall Motors product, has been called on as a deputy for both positions. A fine club cricketer, too. Height 5 ft. 11 in., weight 12 st. 2 lb.

## GORDON TURNER, Inside Right

Doncaster-born, has been on the fringe of international recognition, having represented the Football League and been chosen as reserve for England's "B" team. Height 5 ft. 10 in., weight 12 st. 4 lb.

H.M.

## AT THE EMPIRE STADIUM

"The Ascot of Greyhound Racing"

## GREYHOUND RACING

EVERY MONDAY and FRIDAY at 7.30 pm

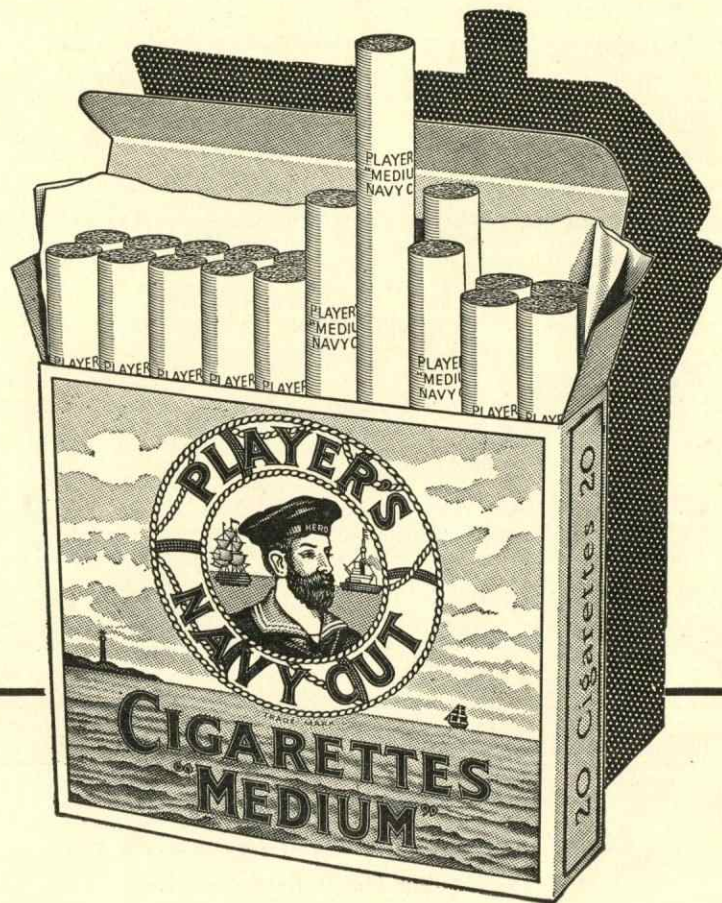
Fully Licensed Restaurant overlooking the Track



# PLAYER'S

## Britain's best liked cigarettes

They taste better - *that's why*



[NCC 282E]

### TWELVE MONTHS AGO

BOLTON WANDERERS 2 (N. Lofthouse 2) MANCHESTER UNITED 0

*HARRY GREGG, Manchester United goalkeeper, pushes away a header from DENNIS STEVENS, Bolton's inside right*



*Bolton's right back ROY HARTLE leaps to head away a dangerous cross with goalkeeper EDDIE HOPKINSON falling the wrong way*



(Wembley Stadium Photos)





## Time Table and Programme of Music

1.30 pm to 2.15 pm

**THE BAND OF H.M. ROYAL MARINES (Portsmouth Group)**  
 (By permission of Major-General, Royal Marines, Portsmouth)  
 Director of Music : Captain K. A. McLean, M.B.E., L.R.A.M., R.M.

1. March Medley ... ..	" Martial Moments "	...	arr. Winter
2. Selection ... ..	" West Side Story "	...	Bernstein
3. Waltz Medley ... ..	" The Charm of the Waltz "	...	arr. Winter
4. Selection ... ..	" Gigi "	...	Loewe
5. Excerpts from ... ..	" Cavalcade "	...	Coward
6. Post Horn Solo ... ..	" The Huntsman "	...	Stanley
7. Galop from ... ..	" Orpheus in the Underworld "	...	Offenbach

2.15 pm to 2.30 pm

**COMMUNITY SINGING**  
 (Arranged by the Daily Express)  
 Conductor : ARTHUR CAIGER, D.C.M.  
 Accompanied by

**THE BAND OF H.M. ROYAL MARINES**

2.30 pm to 2.40 pm

**KEEP FIT DEMONSTRATION**  
 by Coventry members of the Keep Fit Association of England and Wales  
 Directed by Eileen Fowler

2.40 pm to 2.50 pm

**COMMUNITY SINGING**  
**THE NATIONAL ANTHEM**

2.55 pm

**PRESENTATION OF THE TEAMS TO**  
**H.R.H. THE PRINCE PHILIP DUKE OF EDINBURGH, K.G., K.T.**

3.00 pm

Kick-off

3.45 pm

Half-Time

**MARCHING DISPLAY BY**  
**THE MASED BANDS OF H.M. ROYAL MARINES**  
 comprising

**THE BAND OF THE PORTSMOUTH NAVAL COMMAND**  
 (By permission of the Commander-in-Chief, Portsmouth)

**THE BAND OF H.M.S. "St. VINCENT"**  
 (By permission of the Commander-in-Chief, Portsmouth)

**THE BAND OF THE HOME FLEET**  
 (By permission of the Commander-in-Chief, Home Fleet)

**THE BAND OF FLAG OFFICER AIR (HOME)**  
 (By permission of the Flag Officer Air (Home))

**THE BAND OF H.M. ROYAL MARINES (Portsmouth Group)**  
 (By permission of Major-General, Royal Marines, Portsmouth)

The combined Bands under the direction of  
 Captain K. A. McLean, M.B.E., L.R.A.M., R.M., Director of Music, Portsmouth

4.40 pm

Match Ends

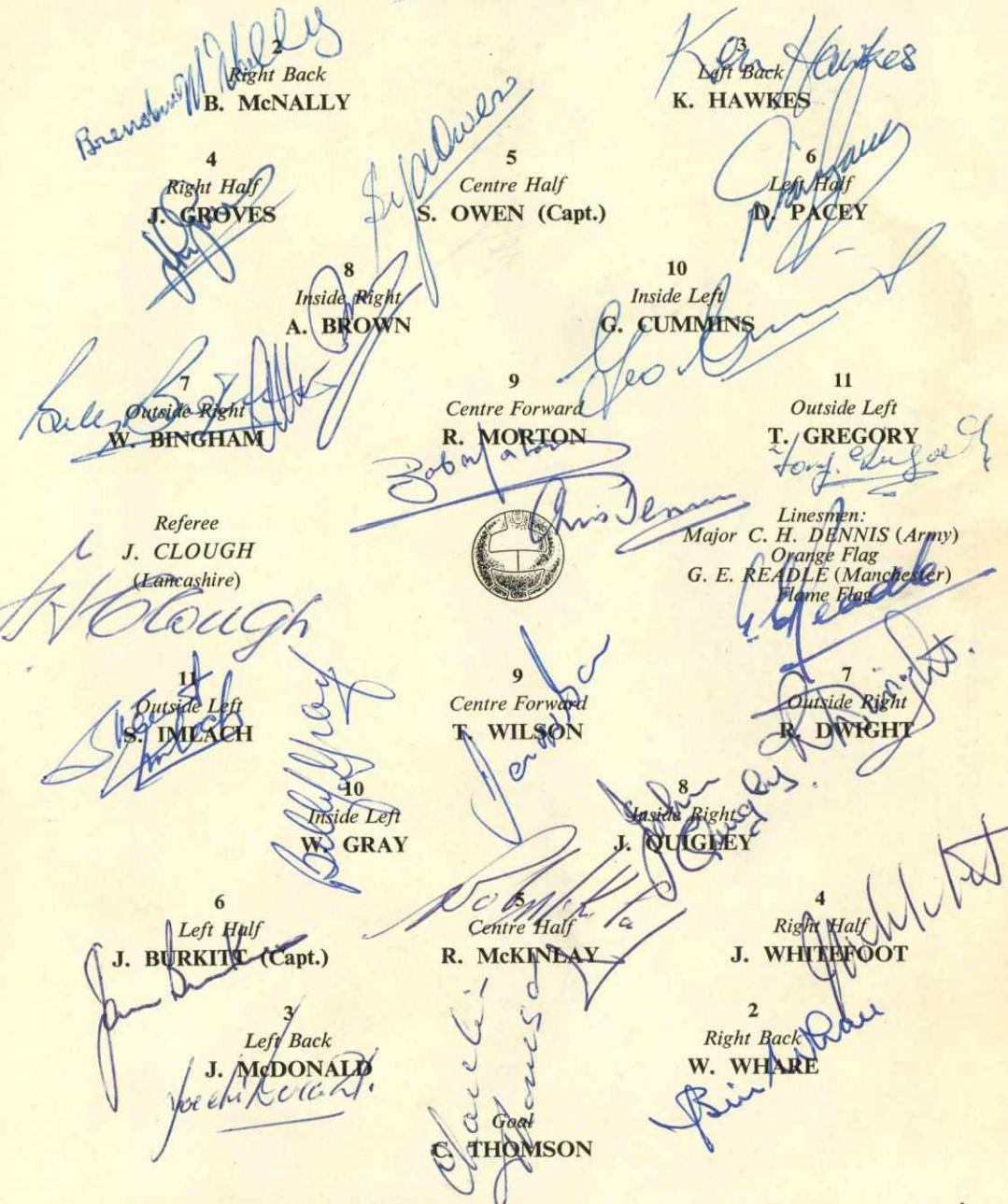
**PRESENTATION OF TROPHY AND MEDALS BY**  
**HER MAJESTY THE QUEEN**  
**THE NATIONAL ANTHEM**

NOTE : If the Match is a draw after 90 minutes' play, an extra half-hour will be played.  
 (Cover Photo by courtesy Fox Photos)

# ★ LUTON TOWN ★

(White Shirts, Black Shorts)

*Two Baynham*  
 Goal  
**R. BAYNHAM**

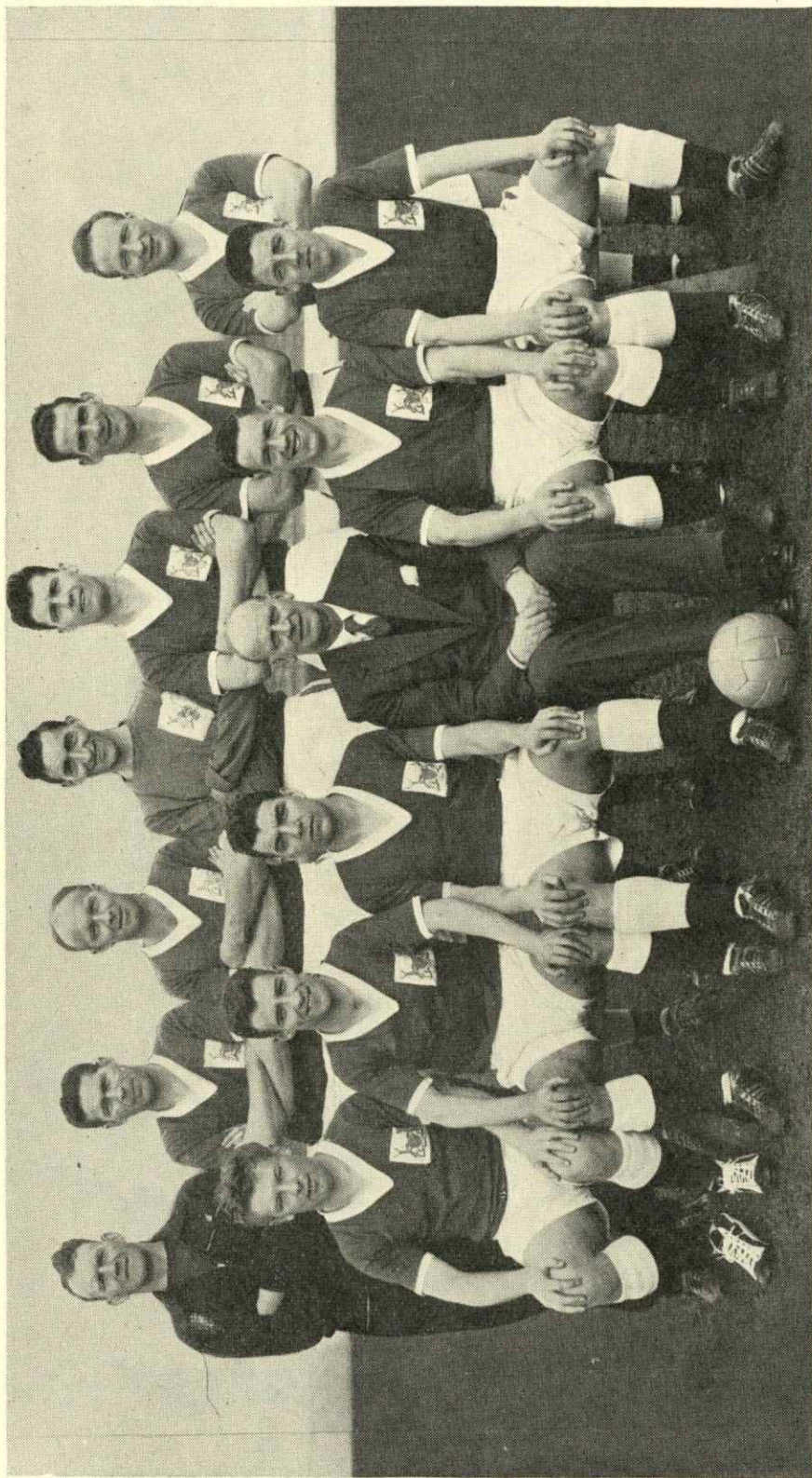


# ★ NOTTINGHAM FOREST ★

(Red Shirts, White Shorts)

ANY CHANGES IN THE ABOVE TEAMS WILL BE ANNOUNCED





Back Row (left to right) : TOM GRAHAM (Trainer), JOE McDONALD, BILL WHARE, CHARLIE THOMSON, BOBBY MCKINLAY, JACK BURKITT, GEOFF WHITEFOOT

Front Row (left to right) : ROY DWIGHT, JOHN QUIGLEY, TOM WILSON, MR. W. H. WALKER (Manager), BILLY GRAY, STEWART IMLACH

## “Reds” make Wembley Debut

By HARRY RICHARDS

**F**EW clubs can boast a more colourful background than Nottingham Forest, proudly making their first appearance at Wembley this afternoon.

Throughout the history of the game the name of this Midland club, which had modest beginnings, continually crops up. It is safe to say that at the present time they are enjoying their most successful period ever under the managership of Mr. Billy Walker who, both as a player and administrator, has given much to football.

Forest, known by their supporters as “The Reds,” came into existence as long ago as 1865, being the third oldest club in the country, near neighbours Notts County being the first, followed by Stoke City.

It was in 1865 that a number of Nottingham youths, who played shinney—a crude form of hockey—decided to form a football club. For a short time the club played shinney and football, but then they decided to concentrate on soccer and became Nottingham Forest F.C., the name being derived from the fact that their pitch was on a recreation ground known as “the forest.”

Forest have made many valuable contributions to the game. In 1874, a famous wearer of their Garibaldi red shirt, Samuel Weller Widdowson—his father was a lover of Charles Dickens’ books—invented shinguards. Four years later the referee’s whistle was used for the first time in a match between Forest and Sheffield Norfolk at Nottingham.

Quickly the Forest achieved fame. They beat many of the best teams in the country, competed for the F.A. Cup for the first time in 1878-79 and reached the semi-final at the first attempt—a feat which remains a record.

### ● “SEMI” IN SCOTLAND

In 1884-85 Forest figured in the only F.A. Cup semi-final ever played in Scotland, losing to Queen’s Park in a replay at Edinburgh.

The Reds were represented at the inaugural meeting of the Football League in 1888, but they did not become one of the original 12 founder clubs, only because they could not obtain fixtures.

Forest joined the Football Alliance and soon won the Championship. Then came the extension of the First Division of the Football League and the start of Division Two. The Midland side were elected to the senior division.

*They are also proud of the fact that they helped to give Arsenal a start in 1886.*

One of their players migrated to Woolwich and when it was decided to form “Royal Arsenal,” Forest provided the shirts. That is the reason the Gunners adopted red on their colours.

Mr. Walker, who celebrated 20 years at the City ground this year, has had much to do with the club’s emergence as one of the best footballing sides in the country.

*The former Villa and England inside left—he holds a Cup Winner’s and a Loser’s medal, and managed Sheffield Wednesday when they won the trophy in 1935—remains the only manager still with the club he controlled before the war.*

He has always had the enthusiastic support of the club committee. To many people the use of the word “committee” may sound strange, but it is a fact that Forest are unique in this particular, too. **They are not a limited company, which means that they have no board of directors.**

The club are very proud of the fact that they are run by a committee and in this respect stand alone.

It is the proud boast of all connected with the club that Nottingham Forest—they abhor being called Notts Forest—have got together the best side ever to represent them.

**This is high praise indeed when it is realised that in another six years the club will be celebrating its century.**

### HOW NOTTINGHAM FOREST REACHED WEMBLEY

Third Round (away)  
Attendance 14,300  
Tooting and Mitcham 2, NOTTINGHAM FOREST 2  
(Murphy own goal, Gray)

Third Round (replay)  
Attendance 42,236  
NOTTINGHAM FOREST 3, Tooting and Mitcham 0  
(Dwight, Wilson, Imlach)

Fourth Round (home)  
Attendance 34,289  
NOTTINGHAM FOREST 4, Grimsby Town 1  
(Gray 2, Whitefoot, Wilson)

Fifth Round (away)  
Attendance 55,300  
Birmingham 1, NOTTINGHAM FOREST 1  
(Wilson)

Fifth Round (replay)  
Attendance 39,431  
NOTTINGHAM FOREST 1, Birmingham 1  
(Dwight) (after extra time)

Fifth round (second replay at Leicester)  
Attendance 34,458  
NOTTINGHAM FOREST 5, Birmingham 0  
(Dwight 3, Gray 2)

Sixth Round (home)  
Attendance 45,000  
NOTTINGHAM FOREST 2, Bolton Wanderers 1  
(Wilson 2)

Semi-Final (at Hillsborough, Sheffield)  
Attendance 65,107  
NOTTINGHAM FOREST 1, Aston Villa 0  
(Quigley)



## Introducing

## NOTTINGHAM FOREST

### CHARLIE (CHICK) THOMSON, *Goalkeeper*

One of the five Scots in the team—there are 12 on the club books. A native of Perth, he began his career with Blairgowrie before moving on to Clyde. Entered English football with Chelsea and helped them to win the League Championship in season 1954-55. Moved to Forest in 1957 and has been the first choice keeper ever since. Height 5 ft. 11 in., weight 12 st.

### BILLY WHARE, *Right Back*

A native of the Channel Islands, was recommended to manager Walker by former Aston Villa colleague, Ted Malpass. Born in Guernsey is only the second Channel Islander to appear in the Cup Final. A strong, consistent defender he has been with Forest over ten years. A regular member of the team promoted from the Southern Section of the Third Division has made over three hundred senior appearances since his debut in 1948-49. Height 5 ft. 7 in., weight 11 st. 6 lb.

### JOE McDONALD, *Left Back*

Joined Forest in the close season from Sunderland. Only slightly built he is most effective, a fine positional player and a crisp tackler. Got his chance early in the season when Geoff Thomas was injured and has been first choice since. Played for Great Britain before being first capped for Scotland in 1956. Born at Blantyre his first senior club was Falkirk. Height 5 ft. 8 in., weight 10 st. 10 lb.

### JEFF WHITEFOOT, *Right Half*

This fair-haired strong tackler made his League debut for Manchester United in 1950 when only 16. Played for Young England in season 1953-54. In 1957 was transferred to Grimsby after negotiations to join Forest had ended because he could not be guaranteed a first team place. During the close season moved to Nottingham and has since played consistently well. Height 5 ft. 8 in., weight 11 st. 6 lb.

### BOBBY MCKINLAY, *Centre Half*

Recommended to the club by Uncle Billy McKinlay, their Scottish scout who used to play at the City ground. Joined Forest as a teenager and became regular pivot on retirement of former Luton star, Horace Gager, who still resides in Nottingham. Considered by many unlucky not to have been capped for Scotland. Played a leading part in the promotion campaign of 1956-57. Height 6 ft., weight 11 st. 6 lb.

### JACK BURKITT, *Left Half (Capt.)*

Joined Forest as a junior from Darlaston. Then a centre half but was converted into an outstanding wing half. Comes from Wednesbury, Staffs, the birthplace of manager Walker. Has made over four hundred League appearances and at the start of next season should beat the previous record of 408 held by Tommy Graham, the present first team trainer. Height 5 ft. 9 in., weight 11½ st.

### ROY DWIGHT, *Outside Right*

Joined Forest from Fulham for the start of the present season. One of the most prolific marksmen from the wing in the country. A native of Belvedere, Dwight's inclusion in the Forest attack greatly increased its goal-scoring potential. Has twice obtained hat-tricks from the wing this season—against Leicester City at Filbert Street, and against Birmingham City in the second Fifth Round Cup replay on the same ground. Height 5 ft. 9 in., weight 11 st. 8 lb.

### REFEREE J. H. CLOUGH (Lancashire)

Has been in the running for the F.A. Cup Final for the past seven years—but each time a Lancashire team reached Wembley.

Referees are not chosen from the county of the finalists.

Mr. Clough is in his eleventh season on the Football League list. Refereed the F.A. Amateur Cup Final at Wembley in 1956. Also officiated at the 1957 French Cup Final and at over twenty international matches.

### JOHN QUIGLEY, *Inside Right*

"Baby" of the side he was secured from Ashfield Juniors, a Glasgow Club, 18 months ago. Had a quick rise to fame and has already caught the eye of the Scottish selectors, who have chosen him for international trial games. Scored a hat-trick against Manchester City early this season but his most important goal was that obtained against Aston Villa in the semi-final at Hillsborough. Height 5 ft. 9 in., weight 11 st. 5 lb.

### TOM WILSON, *Centre Forward*

Although a native of the north-east, joined Forest as a junior from nearby Cinderhill Colliery. In those days he was a right winger but rapidly became a skilful leader. Possesses a fine shot in either foot and shares with Dwight the goalscoring honours. Has enjoyed his best-ever season and at one time attracted the attention of the England selectors. Height 5 ft. 8 in., weight 11 st.

### BILLY GRAY, *Inside Left*

One of the most experienced players in the side. Has been with Leyton Orient, Chelsea and Burnley before joining Forest as a right winger. Was Burnley's top scorer in his first season with them getting 20 goals. A former England "B" player, manager Walker experimented with him at inside left this season and he has done extremely well. Height 5 ft. 7 in., weight 12 st.

### STEWART IMLACH, *Outside Left*

The first Scot ever to be capped by his country while playing for Forest. His first senior club was Bury whom he joined from Lossiemouth. In May, 1954, he moved to Derby County, and in the close season of 1955 was signed by Forest. Represented Scotland against Hungary and Poland and was in the World Cup party. Has a fine turn of speed and good shot with either foot. Height 5 ft. 4½ in., weight 10 st. 3 lb.

### RESERVES

#### GEOFF THOMAS, *Back*

One-time Derby schoolboy star who joined Forest staff from school in 1944. Was a regular first team choice for many seasons and only lost his place to McDonald because of injury. Can play either on the right or left. A keen tackler he is also an outstanding golfer. Height 5 ft. 9½ in., weight 11 st. 12 lb.

#### CALVIN PALMER, *Wing Half*

Made his debut for Forest against Arsenal last month and played brilliantly. Only 18, he has been with Forest since leaving his Skegness school and has been playing consistently well for the combination side. Height 5 ft. 10½ in., weight 11 st. 10 lb.

#### JIM BARRETT, *Inside Forward*

A former West Ham United player. Son of "Big Jim" Barrett, the former Hammers' pivot. A prolific goalscorer until he suffered a serious leg injury against Sunderland in December, 1957. After a long absence has made a fine come-back. Height 5 ft. 8½ in., weight 11 st.

H.E.R.

### AT THE EMPIRE STADIUM

### INTERNATIONAL SOCCER MATCH

NEXT WEDNESDAY, MAY 6th

## ENGLAND v ITALY

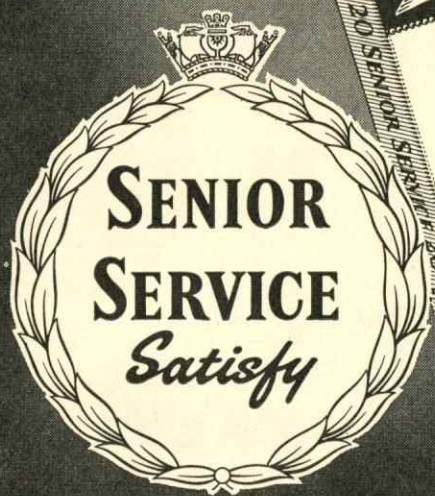
KICK-OFF 3 pm

From 3/6 to 42/-

Tickets obtainable now at the special kiosks in the Stadium Corridors, or by post to Football Box Office, Empire Stadium, Wembley, Middlesex (remittance and stamped addressed envelope must be enclosed). Cheques to be made payable to "Wembley Stadium Ltd."

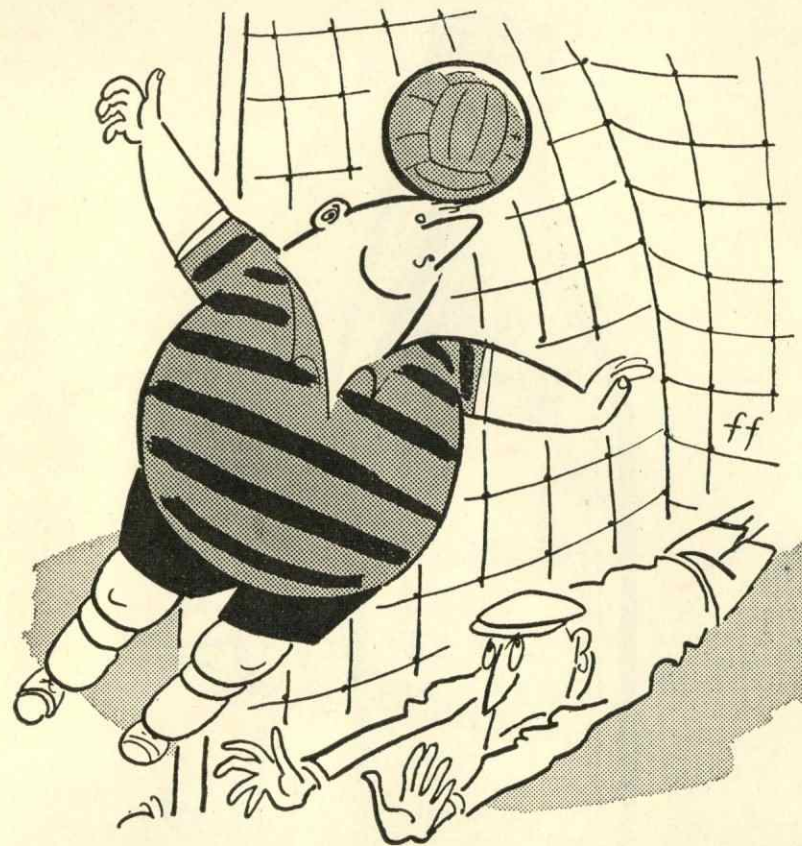


# Ahead for Quality



WELL MADE · WELL PACKED

## Are you on the ball?



## Or isn't your inside right?

Like a gormless goalie with a greasy ball—are you forever fumbling with life—letting opportunities slip through your fingers? Or like a sleep-walking centre forward, do you lack the drive to reach your goal?

When your left half doesn't seem to know what your right half is doing and your better half starts barracking—it's time to call half time and take stock of the situation. Life need not seem like a crazy game, nor need you feel so foul.

All that is required is a daily workout for your metabolism—in other words, a little Andrews every morning.

It will restore your energy, your drive, your initiative—and strengthen your defences.

Andrews in the morning makes it a great day—right from the kick off!

**ANDREWS FOR INNER CLEANLINESS**



Try a Tonic . . .



and ask for  
**Schweppes**

SCHWEPPERESCENT LASTS THE WHOLE DRINK THROUGH

Published by WEMBLEY STADIUM LTD. (Copyright). Printed by McCORQUODALE, LONDON, S.E.

TIME TO ENJOY A **TAYLOR WALKER'S BEER**



THERE'S EXTRA STRENGTH IN

**RESERVE**

SPECIAL PALE ALE

SMOOTHER STRONGER

**CANNON STOUT**

ASK FOR THESE FINE TAYLOR WALKER'S BEERS AT THE BAR





Jimmy Greaves in action at Stamford Bridge.

## Read what England's top teenage player says about Bovril

Chelsea's dynamic inside forward, 19-year-old Jimmy Greaves, has already made his mark in league football.

He was one of the youngest players ever chosen for the England Under-23 International team. Many will remember his first sensational goal for that team in 1957. Within the first ten minutes of his first match Jimmy Greaves had scored. He has maintained his early promise in being one of the leading goal scorers in the Football League.

Jimmy, the most proficient teenage player in this country today, trains and wins on Bovril. He says, "Like many other professional footballers, I take Bovril regularly all through the season. I thoroughly enjoy it - wouldn't be without it in fact. Bovril is a big help in keeping you feeling at the top of your form."

**BOVRIL** does you a power of good

