

F.A. CUP — ROUND FIVE

LUTON TOWN

v.

Wolverhampton W.



Official Programme

PRICE 3d.

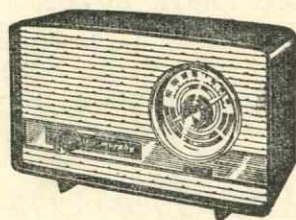
Saturday, 20th February, 1960

Kick - off 3 p.m.

VHF *for everyone!*

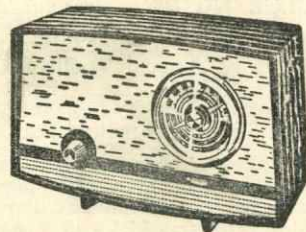
Here at last is a low - priced,
highly sensitive VHF radio —
good to look at, good to listen to,
and easy on the pocket.

AND IT'S A *murphy*



in Black or Red Plastic

£14 · 3 · 6



in Pacific walnut veneer

£16 · 5 · 6

Williams & Richardson

174, BISCOT ROAD · LUTON

Telephone: LUTON 6897/8

LILLYWHITE'S TEAM for 1959-60

at your service again

WE SHALL BE PLAYING ALL OUR REGULAR LEAGUE TEAM PLAYERS

Goalkeepers: S. ERVIS, PRICELOW

Backs: DOUG. FURR, H. E. M. LOCK

Half Backs: S. HEADS, T. R. ELLIS, B. ATTENS

Forwards: P. LYE, L. ADDERS, P. OLES, D. ORES, F. LORING

Reserve: T. IMBERS

WE WISH ALL OUR SUPPORTERS WELL

we are at your service

★ YOU ARE INVITED TO 'PHONE OR CALL AT ★

39, CASTLE STREET, LUTON 'Phone Luton 6282

STANTON ROAD, LUTON 'Phone Luton 51421

HOUGHTON REGIS DEPOT 'Phone Dunstable 546

LEAGRAVE ROAD DEPOT 'Phone Luton 52140

If you are interested in any of our players

Luton Bobbers Stand Club

BEECH HILL PATH, LUTON

Telephone: LUTON 2566

The winning number of the Penny-on-the-Ball Ticket will be announced over the loud speakers at the interval. The person holding the winning ticket can go to the rear of the Main Stand

after the game and for 3d. purchase the ball from Mr. K. Bygraves.

The ticket number for the ball on Saturday, 13th February, 1960 (Sheffield Wednesday match) was 17104.

Join the Luton Bobbers Stand Club

● 1/2 Per Year

● 21/- Life Member

Send Postal Order and stamped addressed envelope to:

MR. J. COLLIER, Hon. Treasurer, BEECH HILL PATH, LUTON

CLUB NOTES — continued.

Tickets in advance for this match may be obtained from the Arsenal Football Club, London, N.5, prices—Upper Tiers, East and West Stands (Reserved Seats) 10/- and 15/-; Lower Tier, East Stand (Guaranteed Seat not reserved) 7/6.

Should this match here today end in a draw at the end of 90 minutes play the Re-play will take place at Molineux Park next Wednesday, 24th February, kick-off 7 p.m. to be played by Floodlight. It will not be an "all ticket" match, but we shall be receiving an allocation of tickets which will be on sale at the Office after this match, Sunday morning from 10 a.m. to noon, and on Monday from 9 a.m. to 5 p.m. Any tickets then unsold will be returned that night to

Wolverhampton. Prices are Centre Stand and Wing Stand Seats 7/- each, Enclosure (Standing) 3/6 each. In view of the short time available it is not possible to give any preference to season ticket holders, but there should be sufficient tickets available for all who wish to make the journey. If the match does not end in a draw our League 1 fixture with Wolverhampton at Molineux Park arranged for today will be played at Molineux on Tuesday next, February 23rd, kick-off 7.15 p.m. We shall be playing Wolverhampton Wanderers therefore next week no matter what happens here today.

British Railways inform us that under no circumstances will an Excursion be arranged for Wolverhampton next week, even if a replay is necessary.

CLUB NOTES

WHATEVER a Club's position in the League, when the Cup matches come round every club faces its own particular match confident of victory. So it is with us today when we are called upon to meet the mighty Wolves in this Fifth Round F.A. Cup Tie. Although we are occupying bottom place in the same League as our opponents and that they beat us by five goals to one here at Kenilworth Road last October, and that the Wolves are at present placed third in the League having the same number of points as second-placed Burnley but with a slightly poorer goal average, also still interested in the European Cup nevertheless we feel we have a very good chance of still being interested in the draw for the Sixth Round when it takes place on Monday next. So far our brushes with the Wolves in League 1 encounters, excepting the meeting earlier this season, have resulted slightly in our favour in that we have obtained nine points out of the sixteen, scoring 16 goals against 15. As a matter of interest, and we receive many enquiries regarding these results, we give them herewith:—

Nov., '55	H	Luton	5	Wolves	1	Season 55-56
March, '56	A		2		1	
						Season 56-57
Aug., '56	H		1		0	(mid week)
Aug., '56	A		4		5	(mid week)
Sept., '57	H		3		1	Season 57-58
Jan., '58	A		1		1	
Nov., '58	H		0		1	Season 58-59
April, '59	A		0		5	
			16		15	

These have all been thrilling encounters, particularly the match at Molineux that Wednesday night in August, 1956, which we eventually lost by five goals to four and even today many people who saw the match delight in telling us about it. To reach the present stage in the Competition Wolves have won their battles with Newcastle United and Charlton Athletic, beating Newcastle 4 goals to 2 at Molineux in the replay after drawing at St. James' Park two goals each, and winning at home against Charlton in the Fourth Round by 2 goals to 1. It is a hard and tortuous road to Wembley, and luck as well as good play is necessary to get there, but endeavour is also required and we are quite sure our lads today will give a good account of themselves for whatever is lacking certainly good play and endeavour are not. Wolves are at present also busily engaged in preparing for the European Cup Second Leg match with Barcelona at Molineux on Wednesday, March 2nd, as well as having this match today on their hands. They have a lot of lee-way to make up in their second match with Barcelona for they begin the match four goals in arrear. They will however have the rub in playing the second leg under conditions more to their liking, and this is where they will have a big advantage over the clever ball-playing Spaniards. After their long journey to Barcelona and back last week the Wolves appeared to be rather lethargic at first in their match at Goodison Park, and only some very good saves by deputy goalkeeper Geoff. Sidebottom during the first half enabled the Wolves to keep a blank sheet at half time. Two well taken goals by centre forward Jim Murray however during the second half gave the Wolves the spoils, but these two goals were against the run of play and the Midlanders were on the whole fortunate in obtaining two more points to keep them well at the top of the Table. To obtain two points however on any opponent's ground immediately following their rather morale breaking trip to Spain was a splendid achievement and

shows the strength of this Wolves' side. We wish them the very best of luck on March 2nd. It will make thrilling T.V. if we can watch them emerge winners of the two-legged tie, especially coming on top of such a handicap at the start as 4 goals in arrear.

Last Saturday here at Kenilworth Road our match with Sheffield Wednesday was played under the worst of conditions, where good football was entirely out of the question. As the game proceeded it became more and more obvious that it was simply a matter of the survival of the fittest, and as the Wednesday had bigger and stronger men so they were able to mount heavier attacks which in the end proved successful for in one of these a pass across field which in normal circumstances would have been cleared stuck in the heavy mud and inside left Fantham from the inside right position managed to beat Ron Baynham in a race for the ball which was on the edge of the penalty area and swept it into the empty net to gain them two points and so send us further into the mire. It is under conditions such as this which makes one wonder how a team such as Barcelona or Real Madrid would fare. However, that may be we certainly have a man-size job on our hands now to escape the drop, and if that does come then every team in the Football League will have been relegated at some time or other. We are the last to have this proud distinction of never having been relegated.

Our Reserve team has done much better lately, having picked up 6 points in a row to place them in 7th position from the bottom of the Table. The conditions at Fratton Park were also atrocious, but the team played well, particularly the defence, John Groves at centre half having a very good match. Alan Daniel, playing in the Reserve side after a spell of thirteen matches in the senior side during which time he has thoroughly justified his selection, received a leg injury which necessitated him leaving the field, but after treatment he is fit again. The Reserves' fixture with Arsenal Reserves arranged for this afternoon has had to be postponed as we were drawn at home with the Wolves. The re-arranged date has not yet been fixed but no doubt will be a mid-week match when the light evenings are with us once more.

Our junior teams are going great guns lately, all three after a fairly indifferent start to the season now holding respectable places in their particular League Table. The Metropolitan League side are holding top position, in the Hellenic League we occupy 4th position, and in the South East Counties' League we have been pulling away from the lower end of the League these last few weeks and now occupy 10th place. Last Saturday for instance only our senior side out of the five teams we run did not register a win, for as well as our Combination side winning at Portsmouth by one goal to nil our "A" team in the Metropolitan League beat Guildford City by four goals to one, our "Colts" side in the Hellenic League beat Wallingford away by 4 goals to 3, (where David Rowland scored a very commendable hat trick), and our "Youth" team in the South East Counties' League comprising Sydee; Wainwright, Wilson; Parrin, Folwell, Clarke; Hulme, Chandler, Andrews, Small and Coles beat Bexley Heath by 6 goals to 2. Given another season or two we are sure quite a number of these youngsters will be knocking at the door for recognition in the senior side.

We have been asked to draw your attention to the match to be played at Highbury on Wednesday, 23rd March next, kick-off 7.45 p.m. when the Football League play the Scottish League.

Continued on inside front cover.

Charles Mares' clothes are a joy to buy —
 a comfort to wear —
 a lasting pleasure —



George Street, Luton - and at St. Albans - Bedford - Bletchley - St. Neots

PICK FLOWERS BREWMASTER

JACK TAYLOR
 (ex - Luton Town F.C.)
 GENERAL GROCER
 TOBACCO and
 CONFECTIONERY
 223
 Beechwood Rd.
 Luton

ORDERS and
 DELIVERIES
 GIVEN
 PERSONAL
 ATTENTION

Telephone 51650

Heads we Win
'IRONS'
 Gentlemen's
 HAIRDRESSERS
 and Stylists
 6, MILL STREET
 LUTON

6 CHAIRS
 Fully Staffed by Experts
 TELEPHONE: LUTON 1961
 Appointments arranged
 Hours: 8.15 a.m. to 6.30 p.m.
 Weds.: 8.15 a.m. to 12.45 p.m.
 Saturdays : : 8 a.m. to 6 p.m.

Luton Town
 Shirts White
 Shorts Black
 Stockings Black with White Tops

Baynham
 Goal

F.A. Cup — Round 5

Dunne 2 Right Back
Brown 4 Right Half
Bingham 7 Outside Right
Turner 8 Inside Right
Morton 9 Centre
Murray 9 Centre
Slater 5 Centre Half
Stuart 2 Right Back

McNally 3 Left Back
Pacey 6 Left Half
Cummins 10 Inside Left
Hawkes, B. 11 Outside Left
Mason 8 Inside Right
Deeley 7 Outside Right
Clamp 4 Right Half

Referee: **Mr. M. DIXON** (York)

Wolverhampton W.
 Shirts Gold
 Shorts Black
 Stockings Gold and Black Hoops

Sidebottom Goal

Kick-off 3 p.m.

Spectators are asked NOT TO CROSS THE PLAYING FIELD after the match

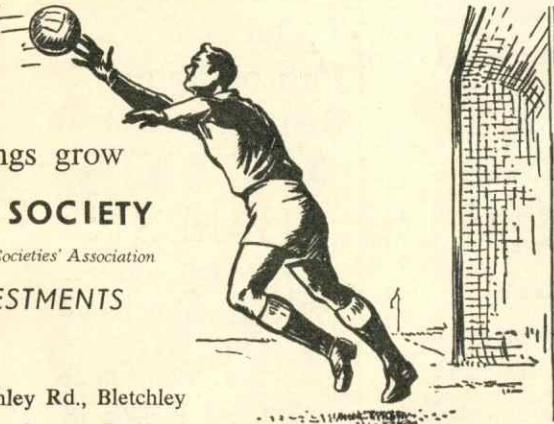
Make the MOST of the
NEW CREDIT FACILITIES
 at
Scriven's
 for
ALL THINGS ELECTRICAL
 ★
H. F. Scriven
 LIMITED
 18, BUTE STREET, LUTON
 Telephone: Luton 5517-8
 27-28, SUN STREET, HITCHIN
 Telephone: Hitchin 4756
 93, HIGH STREET, STEVENAGE
 Telephone: Stevenage 1847

Harry Canham & Son
 Export Packers
 Export Leatherboard Post Boxes
 Cardboard Box - Packing Case
 Ply Box and Crate Manufacturers
GROVE ROAD, LUTON, Beds.
 Telephone: LUTON 458

W. CHAMBERLAIN & CO., (LUTON) LTD.
 General Hardware Merchants
 VALSPAR Lacquer and Flat Wall Paint
 MEREDITH'S
 Celebrated Merlac Paint, Stains and Varnishes
 SISSON'S PARIPAN
 Sicolin Distemper : Enamels and Water Paint
 Wallpapers and Borders etc.
 ALL GARDEN REQUISITES
 106, Dunstable Road, Luton
 Telephone 329 Enquiries Invited

How well can you save?

Open an account with us and watch your savings grow
BEDFORDSHIRE BUILDING SOCIETY
 Member of the Building Societies' Association
 DEPOSITS IN THIS SOCIETY ARE TRUSTEE INVESTMENTS
 16, KING STREET · LUTON
 38, High St. North, Dunstable : 20, High St., Hitchin : 109, Bletchley Rd., Bletchley
 32, Victoria Street, St. Albans : Chief Office: 77-83, Harpur Street, Bedford



HELEY'S RESTAURANT
 MILL STREET
 NEXT TO GAUMONT CINEMA
 Special Fish and Chip
 Dinners and Teas
 SERVED ON MATCH DAYS
 Seating Accommodation: 90
 Phone: Luton 3730 Proprietor: R. A. Heley

The BEST

Washing Machine

Money can buy

BENDIX

Fully Automatic

THERMOLUX

HOME APPLIANCES

56, CHAPEL STREET

LUTON

Telephone: Luton 374

THE Old Bell Harpenden



Proprietor - Tom Hodgson
Ex - Captain, Luton Town F.C.

Fully Licenced Car Park

Printing

of

Quality

///

E. A. ALLEN

AND SON (Luton) LTD.

424, DUNSTABLE RD.

LUTON

Telephone: Luton 51626

Today's Half - Time Scores

NOTE. The letter in the Programme corresponds with the letter on the Board—thus A 0-1 means that the first named club has scored 0 and their opponents 1.

FIRST LIST

F.A. CUP — ROUND 5

A	Bradford City	Burnley
B	Leicester City	West Brom.
C	Manchester U.	Sheffield Wed.
D	Port Vale	Aston Villa
E	Preston N. E.	Brighton & H.
F	Sheffield Utd.	Watford
G	Tottenham H.	Blackburn R.
LEAGUE MATCHES			
H	Arsenal	Everton
K	Leeds United	Birmingham
L	Manchester C.	Blackpool
M	Notts. Forest	Fulham
N	West Ham U.	Newcastle U.

SECOND LIST

A	Bristol City	Derby County
B	Cardiff City	Hull City
C	Charlton Ath.	Plymouth A.
D	Liverpool	Swansea T.
E	Portsmouth	Huddersfield
F	Scunthorpe U.	Middlesbro'
G	Sunderland	Leyton O.
H	Accrington S.	York City
K	Barnsley	Chesterfield
L	Bournemouth	Coventry City
M	Brentford	Grimsby T.
N	Bury	Southampton

THIRD LIST

A	Colchester U.	Norwich City
B	Halifax Town	Reading
C	Mansfield T.	Shrewsbury
D	Newport Co.	Swindon T.
E	Wrexham	Q. P. R.
F	Aldershot	Northampton
G	Barrow	Torquay Utd.
H	Bradford	Chester
K	Carlisle Utd.	Rochdale
L	Crystal Palace	Southport
M	Darlington	Doncaster R.
N	Exeter City	Hartlepoons

BUNTY COACHES

Excursions

SATURDAY

5th MARCH, 1960

CHELSEA v. LUTON

FARE 8/-

Friars Wash Races

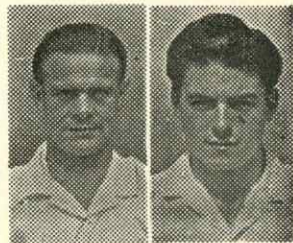
FARE 2/9

BOOK NOW AT

Travel House

21, Leagrave Rd., Luton
Tele.: 5855/6

202, High Street South
Dunstable Tel. 100



Wally Shanks
Gordon Turner

Sports Outfitters

109 - 111, Bury Park Rd.
LUTON Phone 7634

and

20, West St., Dunstable
Phone 1533

Suppliers to Luton Town F.C.
Club Secretaries Especially Welcome

For ALL your
Pharmaceutical
Toilet and
Photographic
Requirements

REIDS
CHEMISTS

(Luton) Ltd.

169, Dunstable Road
LUTON

(Corner of Kenilworth Road)

PHONE - - LUTON 760

DIVISION I and FOOTBALL COMBINATION FIXTURES :: 1959 - 1960

1959 FIRST XI—Division 1		Attendance	1958/9	F	A
Aug. 22 Sat.	Everton	38539	1 3 A	2	2
.. 26 Wed.	Blackpool	19095	1 1 H	0	1
.. 29 Sat.	Leeds United	15822	1 1 H	0	1
.. 31 Mon.	Blackpool	22008	0 3 A	0	0
Sept. 5 Sat.	Bolton Wand.	15604	0 0 H	0	0
.. 9 Wed.	Manchester City	13122	5 1 H	1	2
.. 12 Sat.	Fulham	30100	.. 1 A	2	4
.. 16 Wed.	Manchester City	29309	1 1 A	2	1
.. 19 Sat.	Notts. Forest	16634	5 1 H	1	0
.. 26 ..	Sheffield Wed.	25138	.. A	0	2
Oct. 3 ..	Wolverhampton	22908	0 1 H	1	5
.. 10 ..	West Ham United	23500	0 0 A	1	3
.. 17 ..	Chelsea	18831	2 1 H	1	2
.. 24 ..	West Brom. Albion	22400	0 2 A	0	4
.. 31 ..	Burnley	15638	6 2 H	1	1
Nov. 7 ..	Birmingham C.	19007	1 0 A	1	1
.. 14 ..	Tottenham H. (1)	22528	1 2 H	1	0
.. 21 ..	Manchester United	40572	1 2 A	1	4
.. 28 ..	Preston N. End	17174	4 1 H	1	3
Dec. 5 ..	Leicester City (2)	16700	1 3 A	3	3
.. 12 ..	Newcastle U.	14524	4 2 H	3	4
.. 19 ..	Everton	9799	0 1 H	2	1
.. 26 ..	Arsenal	31466	0 1 A	3	0
.. 28 Mon.	Arsenal	27055	6 3 H	0	1
1960					
Jan. 2 Sat.	Leeds United	19921	1 1 A	1	1
.. 9 ..	Exeter C.—F.A. Cup-3	20000	A	2	1
.. 23 ..	Fulham	17876	.. H	4	1
.. 30 ..	Huddersfield—F.A. Cup-4	22500	A	1	0
Feb. 6 ..	Nottingham Forest	22886	1 3 A	0	2
.. 13 ..	Sheffield Wed.	14392	.. H	0	1
.. 20 ..	Wolves—F.A. Cup-5 H
.. 23 Tues.	Wolverhampton	..	0 5 A
.. 27 Sat.	Leicester City	..	4 3 H
March 5 ..	Chelsea	..	3 3 A
.. 12 ..	West Brom. (6)	..	1 1 H
.. 19 ..	Newcastle Utd.	..	0 1 A
.. 26 ..	Birmingham (S.F)	..	0 1 H
April 2 ..	Tottenham H.	..	0 3 A
.. 9 ..	Manchester Utd.	..	0 0 H
.. 15 Fri.	Blackburn Rov.	..	1 3 A
.. 16 Sat.	Burnley	..	2 2 A
.. 18 Mon.	Blackburn Rov.	..	1 1 H
.. 23 Sat.	West Ham Utd.	..	4 1 H
.. 30 ..	Preston North End	..	0 0 A
May 7 ..	F.A. Cup—Final
To be arranged	Bolton Wanderers	..	4 2 A

1959 Reserve XI Fixtures		Attendance	1958/9	F	A
Aug. 22 Sat.	Ipswich Town	2143	1 5 H	3	4
.. 26 Wed.	Brighton & H. A.	2827	1 1 A	2	2
.. 29 Sat.
Sept. 5 ..	Leyton Orient	2652	1 5 A	1	1
.. 12 ..	Bournemouth	1255	.. H	1	1
.. 19 ..	Nottingham Forest	1331	1 4 A	0	2
.. 26 ..	Portsmouth	1512	4 1 H	4	2
Oct. 3 ..	Arsenal	4618	1 1 A	3	5
.. 10 ..	Leicester City	1266	0 2 H	1	1
.. 17 ..	Bristol City	1971	0 1 A	1	0
.. 24 ..	Charlton Ath.	1419	1 1 H	2	2
.. 31 ..	Tottenham H.	4333	0 1 A	1	3
Nov. 7 ..	Birmingham C.	2164	1 2 H	1	0
.. 14 ..	Southampton	1192	.. A	2	5
.. 21 ..	Chelsea	1991	2 1 H	1	2
.. 28 ..	West Ham United	2132	3 3 A	1	3
Dec. 5 ..	Bristol City	1198	1 3 H	2	5
.. 12 ..	Leicester City	815	1 4 A	1	5
.. 19 ..	Ipswich Town	2303	1 5 A	2	3
.. 26 ..	Southend Utd.	1099	.. H	0	0
1960					
Jan. 2 Sat.	Southend United	1948	.. A	1	1
.. 9 ..	Swansea Town	1008	5 2 H	5	3
.. 23 ..	Bournemouth & B.	1688	.. A	1	5
.. 30 ..	Leyton Orient	2540	3 1 H	2	1
Feb. 6 ..	Notts. Forest	3075	2 1 H	3	2
.. 13 ..	Portsmouth	..	1 0 A	1	0
.. 27 ..	Charlton Athletic	..	4 3 A
March 5 ..	Tottenham H.	..	2 0 H
.. 12 ..	Birmingham C.	..	3 2 A
.. 19 ..	Southampton H
.. 26 ..	Chelsea	..	0 3 A
April 2 ..	West Ham Utd. H
.. 9
.. 16 ..	Swansea Town	..	2 1 A
.. 23
.. 30 ..	Brighton & H. A.	..	4 2 H
To be arranged	Arsenal	..	3 3 H

"Football League Fixtures are the copyright of The Football League Limited, and are printed by their permission under Licence No. 2. They must not be reproduced in whole or in part without permission from The Football League Limited."

LEAGUE TABLE 1959 - 60

Up to and including Saturday, 13th February, 1960

	P.	W.	D.	L.	F.	A.	Pts.
Tottenham Hotspur	29	15	9	5	61	34	39
Burnley	28	16	4	8	64	44	36
WOLVERHPTON	29	16	4	9	65	52	36
Sheffield Wed.	29	14	6	9	54	33	34
Preston North End	29	12	9	8	53	49	33
Bolton Wand.	28	13	6	9	37	32	32
Fulham	29	13	5	11	53	58	31
West Bromwich	28	12	7	9	54	40	31
Blackburn Rov.	29	14	3	12	49	47	31
West Ham United	28	14	3	11	54	54	31
Manchester United	29	11	7	11	66	58	29
Newcastle Utd.	29	12	5	12	59	58	29
Blackpool	29	10	7	12	40	42	27
Chelsea	29	10	6	13	56	66	26
Arsenal	29	10	6	13	50	61	26
Manchester City	29	11	3	15	60	61	25
Leicester City	29	8	9	12	45	59	25
Nottingham Forest	29	10	5	14	35	54	25
Everton	29	8	7	14	45	54	23
Leeds United	29	8	7	14	48	66	23
Birmingham C.	28	8	5	15	38	52	21
LUTON TOWN	28	6	7	15	32	50	19

NEXT MATCH

Saturday, 27th February, 1960

Football League — Division 1 Kick-off 3 p.m.

Luton Town

v.

Leicester City

Prices of Admission:

Centre Stand 7/-, Wing Stand 5/6

Enclosure 4/-, Boys 2/-

Bobbers Stand 3/-, Boys 1/3

Terraces 2/-, Boys 1/-

Established a Century

G. A. WILD & SONS

LIMITED

The Sports and Leather Goods Specialists

14, Manchester Street

9a, Wellington Street

Telephone: Luton 780

LUTON

Telephone: Luton 1842

41, High Street North, Dunstable

TELEPHONE:
DUNSTABLE 275

Suppliers to the

LUTON TOWN F.C., WATFORD F.C., LEEDS UNITED F.C.
BEDFORD TOWN F.C. DUNSTABLE TOWN F.C.
and many other leading Clubs

FOR ALL YOUR PERSONAL AND CLUB SPORTING REQUIREMENTS

"Bukta," "Umbro," "Fred Perry Sportswear," "Litesome" Sports Clothing

A Speciality: Boys' "Luton Town Cup Final outfits, comprising jersey, shorts and hose

**FROM NOW TO MARCH 10th A SPECIAL END OF SEASON
10% REDUCTION ON ALL FOOTBALL BOOTS IN STOCK**

WEBBER, STUART SURRIDGE, THOMLINSON, MINERVA, MITRE, FOOTBALLS IN
NATURAL, WHITE, YELLOW AND ORANGE

Goal Posts, Nets, Corner Flags and Poles in Stock

"Stan Matthews," "Tommy Lawton," "Don Revie" Shinguards and many other styles

For all sports, you **MUST** have a tracksuit—see our wonderful range of colours and styles,
by "Copdale," "Relum," "Litesome" and "Stuart Surridge." A tracksuit to fit all ages and sizes

LARGE SELECTION OF HOCKEY STICKS, BOOTS, BALLS, ETC.

Rugby, Badminton, Squash, Table Tennis, Billiards, Snooker, Darts and all Indoor Games
Meccano, Dinky Toys, Hornby Dublo, Corgi Toys, Matchbox Toys, Etc.

EASTER WILL SOON BE HERE. Be prepared for your travel goods.

Agents for "Antler," "Revelation," and "Noton," lightweight and air travel luggage
Trunks in great variety. Elephants keep theirs, we sell ours

NOW IS THE TIME TO BRING YOUR TENNIS RACKET TO US FOR RESTRINGING.
Only first rate materials used, and your racket is given the finest service in the hands
of our expert craftsmen, for either hand or machine stringing.

CRICKET SECRETARIES: We invite you to inspect our range of Bats, Pads, Gloves, Stumps,
Bails, Balls, etc., etc. You are especially welcome to either call or arrange a visit by our
representatives who will call any time of the day or night to suit your convenience.

SPECIAL CLUB TERMS