

# BRIGHTON AND HOVE ALBION

FOOTBALL CLUB

GOLDSTONE GROUND • HOVE

SEASON 1965-66

FOOTBALL LEAGUE CUP—1st ROUND REPLAY

**ALBION v LUTON TOWN**

TUESDAY, 7th SEPTEMBER, 1965 K.O. 7.15 p.m.

## JOIN IN THE **EVENING ARGUS LOST BALL CONTEST**

★ ★ ★  
EVERY A SUSSEX CAN WIN  
WEEK READER £250

★ ★ ★

Entry Form appears every Saturday

PROGRAMME  
SIXPENCE

## BRIGHTON AND HOVE ALBION FOOTBALL CLUB LTD.

President HIS GRACE THE DUKE OF NORFOLK, E.M., K.G., P.C., J.P.

### Directors

E. COURTNEY KING (Chairman)

T. E. WHITING (Vice-Chairman)

A. D. P. BRAZIER

H. J. PARIS

L. H. STRINGER

N. WISDOM

Hon. Medical Officers Dr. H. SHEPHEARD Dr. C. D. SHIMMIN

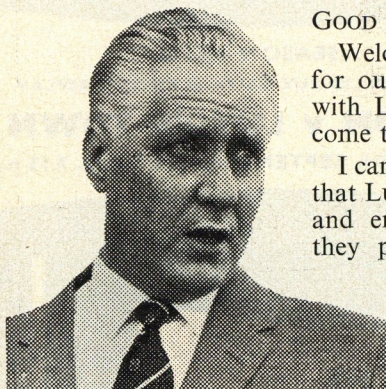
Hon. Surgeon Mr. J. C. F. LLOYD WILLIAMSON

Manager A. MACAULAY

Secretary J. RANGLES

RIGHT OF ADMISSION RESERVED

## Archie Macaulay says . . .



GOOD EVENING, EVERYONE,

Welcome to the Goldstone Ground for our Football League Cup replay with Luton Town, and a warm welcome to our Luton visitors.

I can well remember not so long ago that Luton were the F.A. Cup finalists and en route to Wembley Stadium they put Norwich City out in the semi-final. I was then the City manager and this was one of the bitter pills I had to swallow in football.

### Fortunes of Football

At that time Luton were a First Division club. Now they are in League 4. That's the fortune of this game of football . . .

But knowing those in charge of the club I don't think it will be very long before the Town start to climb again.

I think our Albion lads have deserved a pat on the back for last week's performances in drawing at Luton and then taking their first League point of the season at Reading on Friday.

There's no doubt about it, they have broken the ice and this may well be the road to recovery from a very indifferent start.

### Problems Easing

I am very pleased to say that we are now getting our injured

## STREAMLINE TAXIS

Prop. S. C. A. LOCKE

(PORTSLADE)

14 CARLTON TERRACE, PORTSLADE

RADIO CONTROLLED FOR MORE EFFICIENT SERVICE

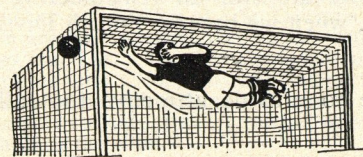
OFFICE HOURS 7 a.m. till 12.15 a.m.  
Except SATURDAYS 7 a.m. till 1.15 a.m.

STATION WORK . HOSPITALS . THEATRES  
ANY DISTANCE . WEDDINGS OUR SPECIALITY

For ALL occasions

Telephone  
**BRIGHTON**  
**47280**

long distance at  
reduced rates



... but you can't beat

**Courtneys!**  
FOR DRY CLEANING

*we can't play Football for Toffee !!!*

but we score a goal every time with our Dinner Parties  
Reasonably Priced menus — Excellent Party

**Arnold House Hotel**

BOOK NOW — Brighton 25055

OPEN ALL THE YEAR ROUND FOR ACCOMMODATION

ARCHIE MACAULAY SAYS . . .—*continued*

players back into the playing fold.

Jack Bertolini, for example, should be playing again very shortly. He's keen to get back into action, as you may guess. But the news of Robin Upton is that he will still have to be patient, following that broken leg injury of his. He's had very bad luck with injuries.

These are my first programme notes of the season and may I say once again how greatly I have appreciated the wonderful support given to the club. Albion have become famous for their enthusiastic following, and we are still all remembering the exciting events of last season, when we became Fourth Division champions.

Every effort will be made to provide attractive football to retain this support.

Here's to a hard fight ahead and may we see an exciting and entertaining game this evening.

<b>NEW IMPERIAL HOTEL</b>	<i>The home of many Football League Teams when they visit Brighton</i>
	<b>Ideal venue for your SOCIAL, MEETING BANQUET WEDDING RECEPTION SOCIETY DINNER</b>
	FULLY LICENSED . ORCHESTRA
	<i>Suites available for numbers up to 150</i>
<b>FIRST AVENUE HOVE</b>	<b>Please phone HOVE 31121</b>

THE  
**HOVE  
SHIRLEY PRESS**  
LTD.

45-47 Shirley Street  
Hove 3, Sussex

Telephones: Hove 33336 and 36300

PRINTING  
BOOKBINDING  
DUPLICATING  
MACHINE RULING  
DIE STAMPING  
SCREEN PRINTING  
STATIONERY

**SUPPORTERS' CLUB NOTES**

Here we are again at the beginning of a new season, and we hope a successful one. Don't forget to enrol in the Supporters' Club either at the huts on the ground or at our office at 8 St. George's Place, Brighton.

We are now working very closely with the Parent Club in running the Bingo and Lucky Number Competitions. These tickets are 1/- each and the prizes total £550. Why not become an agent? Apply to our office or the huts where full information can be given.

Support the lads at away matches with us. Details can be obtained from the huts or the office.

By enrolling in the Supporters' Club you are insured against accident on any ground, or while travelling with the Club. **FILL IN FORM BELOW AND SEND IT TO US AT ONCE.**

-----  
**Brighton and Hove Albion Football Supporters' Club  
ENROLMENT FORM**

Please enrol me as a Member of the above Club for the Season 1965/66.

Name.....Mr., Mrs., Miss, Master\*  
BLOCK LETTERS PLEASE \* Delete where not applicable.

Address.....

I enclose my subscription of.....minimum subscription 1s. 6d. adults,  
under 15 years 1s.

I also wish to purchase the Club Badge for which I enclose a further 2s. 3d.  
Please return this Form to Mr. L. Slater, Membership Secretary, Club Office  
8 St. George's Place, Brighton.

<p><b>YOU SCORE EVERY TIME WITH EQUIPMENT</b> from <b>Ron Noakes</b> <b>SPORTS EQUIPMENT</b></p> <p><b>111 WESTERN ROAD, HOVE 2—Telephone Brighton 34854</b> ● STOCKIST OF LEADING MAKES</p>
--

Travel by

# SOUTHDOWN

**TOURING HOLIDAYS**

**EXPRESS SERVICES**

**EXCURSIONS**

**PRIVATE HIRE**

**SOUTHDOWN MOTOR SERVICES LTD.**  
Steine Street, Brighton-Phone 66600



the sign of good ale

**BRICKWOODS**

## Brazilian World Cup Preparations

Defence of the World Cup is the prime preoccupation of the Brazilian Football Association. In the hope that they will be able to repeat their triumphs of 1958 and 1962 when the Final Series takes place in England in July 1966, they embarked on the most intensive programme of preparation any team has undertaken for the competition.

During June and early July, Brazil engaged in eight international matches in South America, Africa and Europe, winning six, drawing two, and scoring 15 goals against one. Leading marksman was the player English enthusiasts will be yearning to see in full flight next year, Pele, who scored eight times, including a hat-trick against Belgium.

The programme continues with August games against Paraguay, three against Uruguay—like Brazil, twice winners of the Jules Rimet Cup—in September; and three against Chile in October.

Three games against Argentina follow in November, and between March and June, when Brazil leave for the final stages of their preparation, another six to eight international matches are projected. Some schedule!

**SEMADENI**

*Swiss*

**RESTAURANT**

**48 PRESTON ST. BRIGHTON**  
Telephone Brighton 27517

*Reservations and Bookings*  
Hours 9 a.m. to 12 p.m.

*Ideal for functions, Parties*  
(PRIVATE AND BUSINESS)

*Specimen Menus made*  
upon Request

**HOT MEALS ALL DAY**

*Official Supplier to*  
**BRIGHTON & HOVE ALBION F.C.**

**ALL SPORTS GO TO**

**HAMMONDS**

(JACK TAYLOR)  
30 years in Professional  
Football. Ex-Wolves player  
Manager of Q.P.R., Leeds United

**5-6 MARINE COURT**  
**ST. LEONARDS-ON-SEA**  
Telephone: HASTINGS 6992

**SPORTS, TOYS, MODEL RAILWAY**

NEXT HOME MATCH

SATURDAY, 11th SEPTEMBER

K.O. 3.0 P.M.

FOOTBALL LEAGUE

**ALBION v.  
EXETER CITY**

AVAILABLE ON  
THE GROUND

**TAMPLINS  
WATNEYS**  
FINE BEERS

★ The winners of tonight's  
match will play at home  
against Ipswich Town.

Date to be arranged.

Examples of Cheap Fares

**To HOVE**

BY ALL TRAINS

from	Return
Brighton	1/2
Burgess Hill	3/3
Hassocks	2/9
Haywards Heath	4/3
Lancing	2/6
Lewes	3/3
Portslade & West Hove	1/2
Preston Park	1/2
Shoreham-by-Sea	1/10
Worthing Ctl.	3/3

Watch this space for details  
of cheap fares to away games



Right Wing

**BRIGHTON & HOVE ALBION**

Left Wing

POWNEY

2-HOPKINS

3-BAXTER

4-DAVIES

5-GALL

6-TURNER

7-GOULD

8-COLLINS

9-SMITH, J.

10-CASSIDY

11-KNIGHT

Referee:

G. W. T. DAVIES  
(Romford)



Linesmen:

RED FLAG:  
Mr. K. MARKHAM  
(Woking)

YELLOW FLAG:  
Mr. H. G. STENNETT  
(Leigh-on-Sea)

11-MACKECHNIE

10-REID

9-READ

8-GIBSON

7-SLOUGH

6-MOORE

5-RIVERS

4-EDWARDS

3-JARDINE

2-THOMSON

TINSLEY

**LUTON TOWN**

(These teams are subject to alteration)

Left Wing

Right Wing

Kick-off to a  
good start for a  
stay in Brighton or  
for Party Catering book  
up at the

**SALISBURY  
HOTEL**

on the sea front.

Telephone Brighton 39642

**ALDRINGTON  
PRESS**

61-5 NORTH STREET  
PORTSLADE

Commercial and  
Colour Printers

Ring Brighton 48341  
for Personal Attention

SPORTS GROUNDS - TENNIS COURTS - DRIVES  
FENCING - DRAINAGE - GARDEN CONSTRUCTION  
Etc.

**BOYLES  
of BRIGHTON Ltd.**

56 ELEY DRIVE, ROTTINGDEAN  
Telephone Rottingdean 5441

**FOOTBALL** or whatever **SPORT YOU**  
play consult the **PRACTICAL**  
Specialist

**R. C. EDWARDS**

110 PORTLAND ROAD, HOVE 3

Telephone 38565 (50 years experience) Courteous Service

*calling all sports fans . . . .*

**BRIGHTON RACES**—Wednesday and Thursday, 15th and 16th September (*First race 2 p.m. each meeting*).

**GREYHOUND RACING**—at *Nevill Road, Hove*, every Monday, Wednesday and Saturday at 7.30 p.m.

**PLUMPTON RACES**—*Plumpton, near Lewes*, on Wednesday, 29th September at 2 p.m. 13 miles from Brighton by bus or train.

**PROFESSIONAL TENNIS**—at the *Sports Stadium, Brighton*, on Sunday, 19th September at 7.15 p.m.

**RUGBY** Every Saturday—*Brighton Rugby F.C. play at the Sports Arena, Tongdean Lane, Brighton, and Hove Rugby F.C. play at Hove Park, Hove.*

*issued by Brighton & Hove Sports Advertising Committee*

**FOOTBALL COMBINATION FIXTURES**

1965-66



Date	Opponents	F	A	Gate	Date	Opponents	F	A	Gate
Aug 21	Bristol City ... (h)				" 22	Luton Town ... (h)			
" 28	Notts County ... (a)				" 29	Bristol City ... (a)			
" 30	Q.P.R. ... (a)				Feb 5	Notts County... (h)			
Sept 4	Millwall... (h)				" 12				
" 22	Reading ... (a)				" 19	Millwall ... (a)			
" 18	Gillingham ... (h)				" 26	Reading... (h)			
" 25	Colchester Utd... (a)				Mar 5	Luton Town ... (a)			
Oct 2	Watford ... (h)				" 12	Gillingham ... (a)			
" 9	Southend Utd. (h)				" 19	Colchester Utd. (h)			
" 16	Bournemouth ... (a)				" 26	Watford ... (a)			
" 23	Oxford Untd... (h)				" 30	Leyton Orient ... (a)			
" 30	Aldershot ... (a)				April 9	Bristol Rovers... (h)			
Nov 6	Charlton A. ... (h)				" 11	Mansfield Town (h)			
" 13	Bristol Rovers ... (a)				" 16	Brentford ... (a)			
" 20	Leyton Orient (h)				" 23	Birmingham C. (h)			
" 27	Birmingham C. ... (a)				" 30				
Dec 4	Brentford ... (h)				May 7	Mansfield Town... (a)			
" 11	Southend Utd. ... (a)				" 14				
" 18	Bournemouth... (h)				" 21				
" 28	Q.P.R. ... (h)				" 28				
Jan 1	Oxford Utd. ... (a)								
" 8	Aldershot ... (h)								
" 15	Charlton A. ... (a)								

SAYOY CINEMA

**THE  
THIRD  
DAY**

ASTORIA BRIGHTON

FOR A SEASON  
TWICE DAILY 2.30 & 7.30  
**MY FAIR  
LADY**

BRIGHTON  
SPORTS STADIUM  
WEST ST. BRIGHTON 26066

**ICE SKATING**  
Mon. Tues. Wed.  
Thurs. & Sat.  
10.0, 2.30, 7.30  
Fri. & Sun. 10.0, 2.30

**WRESTLING**  
SUN., 12th SEPT. 8 p.m.

CONNAUGHT THEATRE  
WORTHING  
TONIGHT

**THE LONG  
WEEK-END**  
by  
STUART READY



*Introducing*  
**MICK  
HICKMAN**

Mick is Albion's fine young reserve centre-forward, who signed as a full-time professional during the summer. Fast, strong and a tremendous worker, this young man from the Guildford area looks to have a first-class career ahead.

*We specialise in the following cars*

**JAGUAR**

**STANDARD**

**TRIUMPH**

**ROVER**

**BOORERS**

**OF BROADWATER**

WORTHING 5467

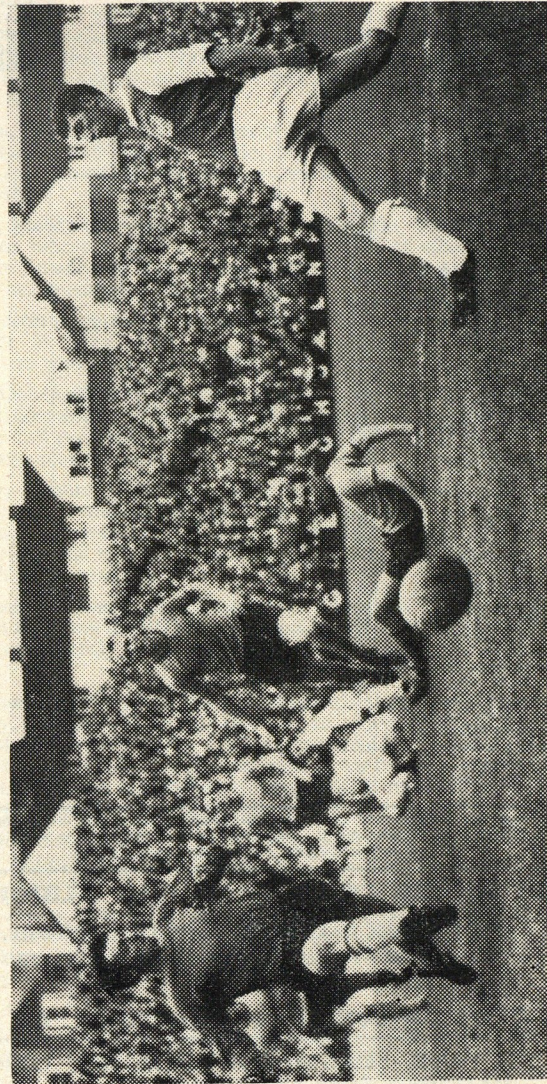
**BLATCHINGTONS**

**LTD. of HOVE**

Our Carpet Library covering every possible British carpeting, is recognised in the trade as the finest in Sussex. When carpets are discussed Blatchingtons' name is always at the top

**TELEPHONES: BRIGHTON 35329 & 35706**

**ALBION'S FIRST HOME GOAL**



Bill Cassidy is on the spot to score Albion's first home goal of the season, against the strong Hull City side at the Goldstone Ground. Bill had a fine game, testing Hull goalkeeper Mike Williams with numerous thrilling scoring efforts.

FOOTBALL LEAGUE

Date	Opponents	Result	Scorers	Gate	Pos. in League
Aug 21	Mansfield Town ... (a)	1-3	Cassidy	7647	
" 23	Queens Park Rangers... (a)	1-4	Oliver	10480	
" 28	Hull City ... (h)	1-2	Cassidy	16560	
Sept 3	Reading... (a)	0-0	—	10358	
" 11	Exeter City ... (h)				
" 14	Grimsby Town... (a)				
" 18	Peterborough United... (a)				
" 25	Millwall ... (h)				
Oct 2	Gillingham ... (a)				
" 5	Grimsby Town ... (h)				
" 9	Bristol Rovers... (a)				
" 15	York City ... (h)				
" 23	Oxford United... (a)				
" 30	Swansea Town ... (h)				
Nov 6	Walsall ... (a)				
" 13					
" 20	Bournemouth & B.A.... (a)				
" 23	Queens Park Rangers (h)				
" 27	Southend United ... (h)				
Dec 4					
" 11	Shrewsbury Town ... (h)				
" 17	York City ... (a)				
" 27	Watford ... (h)				
" 28	Watford ... (a)				
Jan 1	Bristol Rovers ... (h)				
" 7	Workington ... (a)				
" 15	Oxford United ... (h)				
" 22					
" 29	Mansfield Town ... (h)				
Feb 5	Hull City ... (a)				
" 12	Scunthorpe United... (h)				
" 19	Reading ... (h)				
" 26	Exeter City ... (a)				
Mar 5	Scunthorpe United ... (a)				
" 12	Peterborough Utd.... (h)				
" 19	Millwall... (a)				
" 26	Gillingham ... (h)				
April 2	Walsall ... (h)				
" 8	Brentford ... (h)				
" 9	Swindon Town... (a)				
" 11	Brentford ... (a)				
" 16	Bournemouth & B.A. (h)				
" 22	Southend United ... (a)				
" 30	Swindon Town ... (h)				
May 6	Shrewsbury Town ... (a)				
" 13	Oldham Athletic ... (h)				
" 18	Oldham Athletic ... (a)				
" 20	Workington ... (h)				
" 28	Swansea Town... (a)				

These fixtures are the copyright of The Football League Limited, and are printed by their permission under Licence No. 2. They must not be reproduced in whole or in part without permission from The Football League Limited.

**THE BEST SOCCER COMES FROM 'THE ALBION'**

But the Best in Greetings Cards - Birthday, Anniversary, Get Well, 21st, Bon Voyage, Etc., can only be found at . . .

**INA'S 112 LONDON ROAD, BRIGHTON Tel. 683539**

A LARGE SELECTION OF AIRFIX KITS, CORGI AND MATCHBOX TOYS, CHILDREN'S BOOKS OF ALL KINDS AND SOFT TOYS FOR THE TODDLERS are readily available.

**Pen Pictures of Luton Town**

**Tinsley, Colin (goalkeeper).** Born at Middlesbrough, his first club being Grimsby Town, then on to Exeter City before joining Luton in August 1963. He made regular appearances in the first team last season, and established himself as first choice.

**Thomson, Bobby (full-back).** Born at Menstrie in Scotland. He first came into prominence with Partick Thistle, and was later transferred to Liverpool for a big fee. Luton secured his services from the latter club on the 2nd August 1965.

**Jardine, Freddy (full-back).** Born in Edinburgh. Played for Dundee for two seasons before coming to Luton at the end of season 1960-1961. He came as an outside-left, but was successfully converted to a full-back, where he figured last season in 32 first team games.

**Moore, John (wing-half).** A newcomer to Luton, having been signed from Motherwell in May 1965. He was recommended by their Scottish representative who forecasts a bright future for him in English football.

**Rivers, Alan (half-back).** Born at Portsmouth, he migrated to the Luton area and was recommended to them in 1961. Progressed through the junior teams and signed full professional forms in January 1964. Is a very well-built lad who can also play with success at centre-forward.

**Edwards, Richard (full-back).** Was recommended by a local scout, and signed amateur forms in October 1963. He gained his place in the Combination side immediately, and held it throughout that season. He was offered professional terms in June 1964, and Luton look to him now to establish himself as a regular.

**McKechnie, Tommy (inside-forward).** Born at Glasgow and came direct from Rob Roy (Scotland) at the end of season 1960-1961. Played in the first team consistently in the past, except when injury prevented him from appearing.

**Read, Tony (goalkeeper).** Born at Haydock. His first club was Sheffield Wednesday, and in 1964 he left them to go to Peterborough for whom he also played at centre-forward. He was transferred to Luton in March 1965 but unfortunately owing to a broken bone in his foot, he was unable to play last season. With his adaptability on the field, it remains to be seen which will prove to be his better position.

**Reid, John (inside-forward).** Previously played for Bradford and Northampton to whom was made a substantial transfer fee in November 1963. He has settled down well at Luton and is a tireless and energetic worker.

**Gibson, Jimmy (wing-half).** He was born at Belfast, his first English club being Newcastle United. Then after a spell with Cambridge United, he transferred to Luton on February 2nd 1965, when he won and retained a first team place for the remainder of the season.

**Slough, Alan (full-back).** Another Luton boy who has graduated through the ranks of schoolboy, amateur and apprentice professional. He gave very good displays last season, and was offered full terms in May 1965, and he is another boy on whom the club will pin its faith for the future. Can also play with distinction at wing-half and inside-forward, in fact he gained county representative honours as an amateur in the latter position.





NEVILL RD.  
HOVE

JUST FIVE  
MINUTES  
WALK  
NORTH  
OF THIS  
GROUND

# RACING EVERY SATURDAY

THROUGHOUT THE YEAR

## 7.30

COVERED ACCOMMODATION  
TOTALISATOR IN ALL ENCLOSURES  
FULLY LICENSED BARS & BUFFETS

**"TWINCAST"**  
THREE DOUBLE  
CHANCE POOLS

FREQUENT BUS SERVICES GET YOU THERE:  
5 - 5b - 9 - 10 - 11 - 15 - 19 - 26 - 40 - 55  
Specials from Woodingdean and North Moulsecomb  
Patcham and Tongdean

**CAR PARK** LARGEST CONTROLLED  
IN SUSSEX

SPECIAL AFTERNOON CONCESSION  
TO ALBION SUPPORTERS

**2/-**