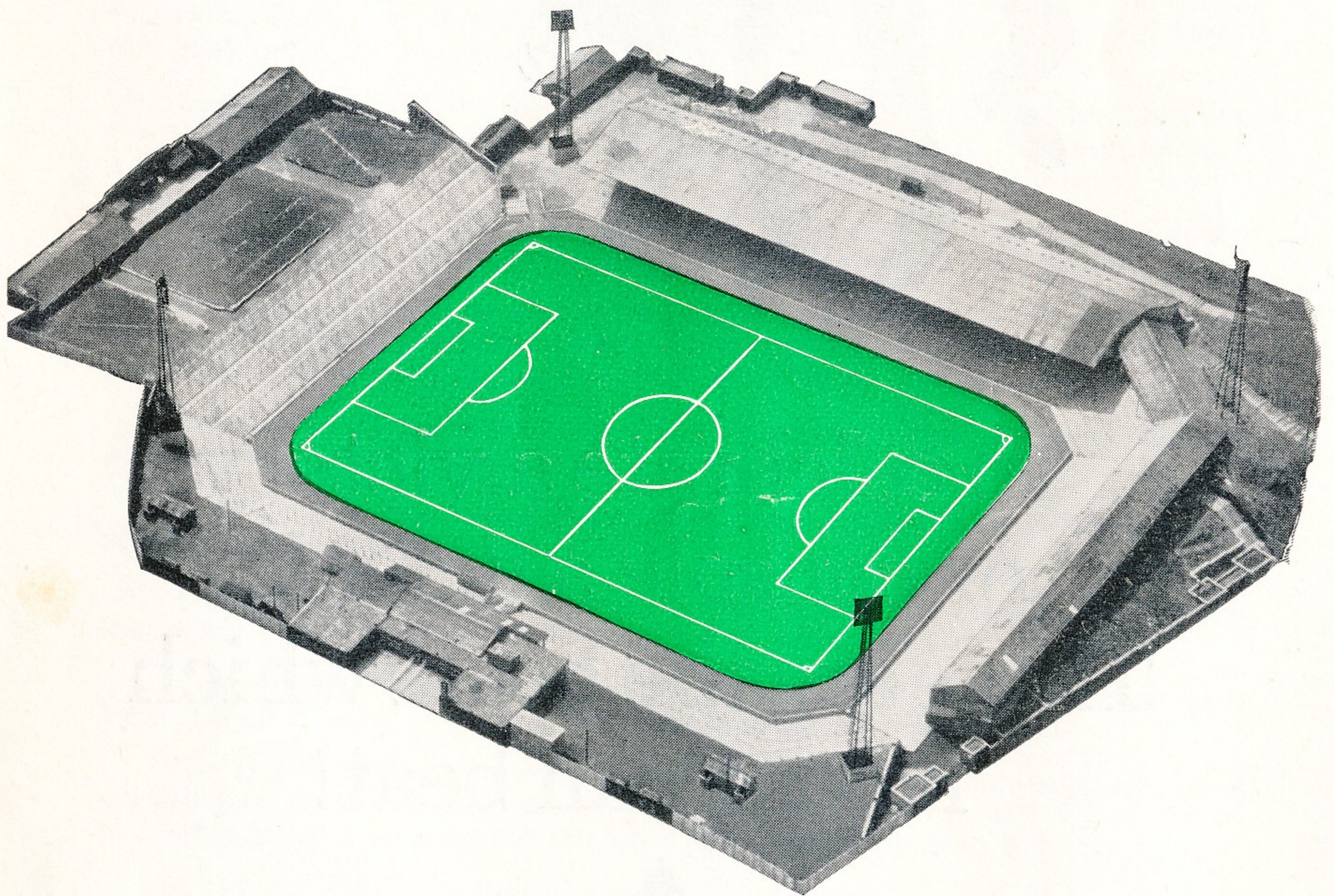


**PORT VALE**  
**FOOTBALL CLUB**



**PORT VALE v LUTON TOWN**

**FRIDAY, JANUARY 26th - 1968**

*Official Programme . . . Ninepence*



To celebrate a victory  
or console a defeat,  
These are the beers which  
no one can beat!

**BASS** ▲ **M & B**  
**WORTHINGTON**  
BASS, MITCHELLS AND BUTLERS LIMITED

## **Port Vale Football Club Co., Ltd.**

Registered Office : VALE PARK, BURSLEM, STOKE-ON-TRENT

Telephones : Stoke-on-Trent 87626 and 85524

F. MERCER PINFOLD (Chairman)

A. McPHERSON (Vice-Chairman)

F. W. BURGESS, Aid. G. L. BARBER, J.P., W. E. ELKES, M. J. SINGER  
General Manager — Sir STANLEY MATTHEWS, C.B.E.

Secretary — N. J. JONES

Hon. Medical Officer — Dr. R. D. GLAISTER

### VIEW FROM THE TERRACE

Tonight we take the unusual step of welcoming you to Vale Park on a Friday night and for this step out of line from normal procedure we could not have more attractive visitors than third placed Luton Town.

Luton's days of First Division and Cup Final glory are long past, but like Port Vale they are in the process of attempting to re-build and reorganise in a bid to regain their former high position in the footballing world.

This season they have maintained consistent form and are now ideally placed for a strong run in to gain one of the elusive top four places.

So tonight we will be able to see just how good Vale's recent improvement is. If Vale can beat Luton we will know that the corner has been turned and things are looking up, at least from the playing point of view.

Vale have now gone six League games without defeat and nine valuable points have been collected on the way.

And the last two away games have been evidence that Vale's famed fighting spirit has been reborn.

At Halifax the side took a terrific battering from Alan Ball's men but still managed to pick up both points with a Roy Chapman goal.

Then, after a three weeks lay-off came the Darlington match that saw Vale snatch a point in the last 10 minutes when all seemed lost.

For this we are once again indebted to Roy Chapman who scored a superb goal with a thunderous 25-yard shot and then ran half the length of the field before laying on the pass for Mick Morris to grab the equaliser.

It will be Vale fans' first chance to see new signing Bill Asprey in Vale colours although many of us know him from his Stoke City days.

In his two matches so far Bill has added confidence and tightness to the defence and this has led to a general improvement all round.

So let us hope that tonight Vale send Luton away knowing that life at the top is not a bit easy.

VALEITE.

PANEL BEATING - SPRAYING - ACCIDENT WORK  
CAR BODY REPAIRS - 24 HOUR TOWING

## **MICHAEL CLEWLOW**

SPEEDWALL STREET, SANDFORD HILL, LONGTON

Telephone STOKE-ON-TRENT 32510 & 33467

Non-Ferrous Castings of every description...

## **Milton Non-Ferrous Castings Company Limited**

MILLRISE ROAD MILTON STOKE-ON-TRENT

Telephone : STOKE-ON-TRENT 54176



The Leading Sports Outfitters in North  
Staffs. — and Sports Contractors to  
Education Authorities throughout the  
Country.

520/2 KING STREET, LONGTON, STOKE-ON-TRENT

Telephone Stoke-on-Trent 32218/9

## **J. ARTHUR FARRINGTON & SON LIMITED**

HAMIL ROAD, BURSLEM, STOKE-ON-TRENT

Telephone 87114 (3 lines)

STEEL STOCKHOLDERS - IRONMONGERS  
IMMEDIATE DELIVERIES

## **OUR VISITORS...**

THE LUTON TOWN Football Club was founded in 1885 and was reputed to be the first club in the South to employ professional players.

They played in the Southern League from 1894 — 96 and were elected the following year (1897) to the Football League Division Two. Known as the 'Hatters' or the 'Straw Plaiters'.

Luton were in Division Two from 1897 to 1900 when they failed to gain re-election. They then operated again in the Southern League until 1920 when they were elected to the Third Division and in 1921 were members of the Third Division South.

They gained promotion to the Second Division in 1937 after being runners-up the previous season and in 1955 were runners-up and of course were promoted to the First Division where they remained until season 1959 - 60. After a short spell in the Second Division they were relegated with 29 points; only winning one game away from home and losing 17 — the remaining three away games were drawn.

Season 1963 - 64 found Luton in the final position of eighteenth with 42 points; the following season they were relegated with 33 points. Next season their first in the new Fourth Division, they finished sixth from the top with 56 points, missing promotion on goal average. Tranmere and Colchester had the same number of points and Colchester were promoted.

Last season was nearly a reversal of the previous year. They finished the season in 17th position with 41 points, winning 16 games with 9 drawn and a goal average of 59 against 73. Their leading goalscorer was Rioch with 10. In the corresponding games last season we won 1 - 0 at Vale Park and drew 1 - 1 at Luton.

Luton have been quarter finalists in the F.A. Cup on two occasions — 1933 and 1952. Their team in 1952 was Streton; Cooke, Aherne; Horton, Owen, Watkins; Davies, Taylor, Moore, Stobbart, Mitchell.

In season 1936 - 37 Luton Scored 103 goals in 42 matches, and of this number Joe Payne scored 55 which was then the record for the Division 3 South. In the previous season the same player made history on his debut at centre forward by scoring 10 goals in a Third Division South match against Bristol Rovers whom they beat 12 - 0.

The record attendance at the Luton ground is 30,069 versus Blackpool in a cup-tie in March, 1959.

SATURDAY, FEBRUARY 3rd, 1968 at 3-15 p.m.

PORT VALE

v.

ALDERSHOT

LEAGUE DIVISION FOUR

## SCOTIA DIES

(Burslem) LIMITED  
DIE MANUFACTURERS  
and  
CERAMIC ENGINEERS



Brindley Street - Middleport  
**BURSLEM**  
Stoke-on-Trent

Telephone : Stoke-on-Trent 84314

All the way with Raleigh

ALL THE WAY WITH  
**J. COUPE**  
6 ALBION STREET  
HANLEY

Area's Leading Main  
CYCLE DEALER and REPAIR SHOP

ALWAYS ON THE BALL

## MANPOWER (Staffs.) LIMITED

DO YOU NEED EXTRA STAFF?  
EITHER CLERICAL OR INDUSTRIAL

WE CAN SUPPLY IMMEDIATELY  
ON A TEMPORARY OR PERMANENT BASIS

DO NOT HESITATE — RING Stoke-on-Trent 85476

ASPHALT SPECIALISTS ...

**NORTH STAFFS.  
ASPHALT**

FELT ROOFING

"PAPTRIM"

ALUMINIUM EDGING

TARMACADAM

PATHS and ROADS

**FOLEY GOODS YARD, FENTON**

Telephone : Stoke-on-Trent 33157

**NAYLORS  
MENSWEAR**

(H. Naylor)



**THE BOULEVARD  
TUNSTALL  
STOKE-ON-TRENT**

Telephone : Stoke-on-Trent 87729

WHY DON'T YOU SEE US ABOUT  
YOUR  
MOTOR INSURANCE?  
**LESLIE G. WHALLEY  
& CO.**

Insurance and Finance Brokers  
PREMIUMS BY INSTALMENTS  
60% NO CLAIMS BONUSES  
Hire Purchase arranged for the  
purchase of Cars, Etc.

Security House, 1 QUEEN STREET,  
BURSLEM - STOKE-ON-TRENT  
Telephone : 88744 (2 Lines)

BRITISH CERAMIC SERVICE Co. Ltd.



WOLSTANTON, NEWCASTLE, STAFFS.

### LEAGUE DIVISION IV

HOME AWAY

P. W. D. L. F. A. W. D. L. F. A. Pt.

Southend United	...	26	9	5	0	24	10	...	5	4	4	17	20	36
Chesterfield	...	26	12	1	1	36	11	...	3	4	5	15	15	35
Luton Town	...	25	11	1	0	30	7	...	3	5	5	21	22	34
Bradford City	...	27	11	1	1	30	11	...	4	3	7	14	20	34
Barnsley	...	27	8	4	0	18	6	...	5	4	6	17	22	34
Crewe Alexandra	...	26	8	5	0	28	11	...	4	4	5	21	19	33
Hartlepoons United	...	27	8	4	1	17	6	...	5	1	8	14	26	31
Wrexham	...	26	10	2	1	31	6	...	1	5	7	14	25	29
Aldershot	...	25	6	7	0	23	10	...	3	4	5	18	24	29
Brentford	...	27	8	3	3	28	13	...	3	1	9	11	24	26
Lincoln City	...	27	8	2	4	30	18	...	2	4	7	13	23	26
Halifax Town	...	27	7	4	3	23	14	...	1	5	7	8	19	25
Swansea Town	...	26	7	4	1	28	16	...	3	1	10	14	32	25
Doncaster Rovers	...	26	5	5	3	19	11	...	2	5	6	18	27	24
Notts. County	...	27	7	5	2	14	7	...	1	3	9	16	40	24
PORT VALE	...	26	7	1	5	29	20	...	1	6	6	13	24	23
Rochdale	...	26	6	4	2	22	17	...	1	5	8	9	25	23
Newport County	...	26	5	5	2	19	12	...	2	3	9	17	29	22
Exeter City	...	25	7	4	2	24	19	...	0	3	9	6	24	21
Darlington	...	25	2	7	4	22	22	...	3	3	6	8	14	20
Workington Town	...	26	6	5	3	26	19	...	0	3	9	9	34	20
Chester	...	26	4	3	6	22	25	...	2	4	7	13	25	19
York City	...	26	5	3	4	23	14	...	0	4	10	11	26	17
Bradford	...	25	3	5	6	13	17	...	0	5	6	5	20	16

League Positions as at 24/1/68

## Grosvenor Restaurant

RESTAURANT - CABARET and COCKTAIL LOUNGE  
BUSINESSMEN'S LUNCHEES a speciality.

Try our SNACK BAR for the casual meal.

Why not "WINE and DINE" at the "GROSVENOR"

MARKET PLACE, BURSLEM, STOKE-ON-TRENT

Telephone : Stoke-on-Trent 87326

**E. BROADHURST**

Late Directors for Swettenhams Ltd.

**FUNERALS**

EFFICIENT SERVICE  
Helpful and Understanding  
PERSONAL SUPERVISION  
**BUILDING REPAIRS**  
and **ALTERATIONS**  
Over 30 years experience  
AT YOUR SERVICE

**111 CONGLETON ROAD**  
**BUTT LANE** Kidsgrove 2072

**SUMMERBANK  
SERVICE STATION**

(C. D. YOUNG)



**TYRES  
SPARES  
BATTERIES**  
★  
**CAR  
EXCHANGE**



**HIGH STREET - TUNSTALL**  
**STOKE-ON-TRENT** 'Phone 85561

THIS SPACE RESERVED FOR

**Davision**

(STOKE-ON-TRENT) LTD.

**59 - 61 MARKET STREET**  
**LONGTON, Stoke-on-Trent**

Telephone : Stoke-on-Trent 39733

DRIVES, PATHS, GARAGE BASES  
BUILDING AND PROPERTY REPAIRS

**R. LOVATT**

**23 RECORDER GROVE**  
**CHELL HEATH, STOKE-ON-TRENT**  
Telephone : STOKE-ON-TRENT 88911

CONCRETE, PAVING, TARMACING  
BLOCK WALLS, FENCING and GATES

ESTIMATES FREE

**SPENCER & SONS (Hauliers) LTD.**

Haulage Contractors

Long Distance and Tipping Vehicle Service  
Sand, Gravel and General Dealers

**PORTHILL, NEWCASTLE, STAFFS.** Phone : 52572

**G. H. Downing & Co. Ltd.**  
**Brampton Hill Newcastle, Staffs.**

Manufacturers of:  
**HIGH GRADE FACING & ENGINEERING**  
**BRICKS ACME' ROOFING TILES**

**FOURTH DIVISION FIXTURES**

1967/68	Opponents	F. A.
Aug. 19	Southend Utd. ... H	1 2
26	Chester ... A	1 1
Sept. 2	Chesterfield ... H	0 1
6	Notts. County ... A	0 0
9	Exeter City ... A	1 3
16	Darlington ... H	0 1
23	Aldershot ... A	0 2
25	Notts. County ... H	4 1
30	Workington ... H	4 2
Oct. 4	Bradford City ... A	1 2
7	Doncaster Rovers ... H	4 2
14	Bradford ... A	2 2
21	Brentford ... H	4 1
23	Bradford City ... H	1 2
28	Rochdale ... A	1 3
Nov. 4	York City ... H	1 0
13	Chesterfield ... A	0 3
18	Hartlepoons Utd. ... H	2 3
21	Newport County ... A	1 1
25	Swansea Town ... A	2 4
Dec. 2	Barnsley ... H	2 0
9	(1) Chester ... H	1 2
15	Southend ... A	1 1
23	Chester ... H	4 4
26	Halifax Town ... H	2 1
30	Halifax Town ... A	1 0

**FOURTH DIVISION FIXTURES**

1967/68	Opponents	F. A.
Jan. 6	(2) ...	...
20	Darlington ... A	2 2
26	(3) Luton Town ... H	...
Feb. 3	Aldershot ... H	...
10	Workington ... A	...
17	(4) Lincoln C. ... H	...
24	Hartlepoons Utd. ... A	...
Mar. 2	Bradford ... H	...
9	(5) Luton Town ... A	...
16	Brentford ... A	...
23	Rochdale ... H	...
30	(6) York City ... A	...
Apr. 6	Newport County ... H	...
12	Crewe Alex. ... A	...
13	Doncaster Rovers ... A	...
15	Crewe Alex. ... H	...
20	Swansea Town ... H	...
22	Wrexham ... A	...
26	(S.F.) Barnsley ... A	...
May 4	Wrexham ... H	...
11	Lincoln City ... A	...
18	(F) ...	...
	Exeter City ... H	...
Aug. 22	Chester, L. cup (1) ... H	3 0
Sept. 13	P'mouth, L. cup (2) ... A	1 3

**WEST MIDLAND (REGIONAL)  
LEAGUE**

1967/68	Opponents	F. A.
Aug. 19	Lower Gornal Ath. ... A	0 4
21	Wolves "A" ... A	0 3
26	Brierley Hill ... H	5 2
Sept. 2	Hinckley Ath. ... A	3 1
4	Darlaston ... H	3 3
9	Coventry City "A" ... H	0 1
16	Lye Town (L/cup) ... A	1 3
23	Lye Town ... H	1 2
30	Kidderminster H. ... A	0 0
Oct. 7	Bromsgrove R. ... A	1 4
14	Wolves "A" ... H	1 0
21	...	...
28	Atherston T. ... H	2 3
Nov. 4	Bedworth Town ... A	1 4
11	Cinderford Town ... H	2 2
18	Tamworth ... A	0 5
25	Stourbridge ... H	0 2
Dec. 2	Boston Utd. ... A	1 3
9	Stratford Town ... A	1 5
16	Bilston ... H	1 1
23	...	...
26	Hednesford ... A	1 7
30	Redditch ... H	3 1

**WEST MIDLAND (REGIONAL)  
LEAGUE**

1967/68	Opponents	F. A.
Jan. 20	Lower Gornal Ath. ... H	4 3
27	Darlaston ... A	...
Feb. 3	Coventry City "A" ... A	...
10	Dudley Town ... H	...
17	Lye Town ... A	...
24	Halesowen Town ... H	...
Mar. 9	Bromsgrove R. ... H	...
16	Tamworth ... H	...
23	Atherstone Town ... A	...
30	Bedworth Town ... H	...
Apr. 6	Cinderford Town ... A	...
13	Kidderminster H. ... H	...
16	Hednesford ... H	...
20	Stourbridge ... A	...
27	Boston Utd. ... H	...
May 4	Bilston ... A	...
11	Brierley Hill ... A	...
18	...	...
25	...	...
	Dudley Town ... A	...
	Halesowen T. ... A	...
	Stratford Town ... H	...
	Hinckley Ath. ... H	...
	Redditch ... A	...

Telephone :  
**STOKE-ON-TRENT**  
 88958 and 88098

# Potteries Engineering Ltd

.....  
 GENERAL FABRICATIONS  
 GENERAL SHEET  
 METALWORK  
 MACHINERY AND PLANT  
 INSTALLED, REPAIRED  
 AND OVERHAULED  
 DUST EXTRACTION  
 AND COLLECTION  
 DRYING UNITS for  
 Any Industry  
 FUME EXTRACTION  
 AIR CONDITIONING  
 HEATING and  
 VENTILATING

.....  
 CONSULT OUR STAFF OF  
 TECHNICAL SPECIALISTS  
 ESTIMATES FREE

**DUCAL STREET**  
**BURSLEM**  
**STOKE-ON-TRENT**

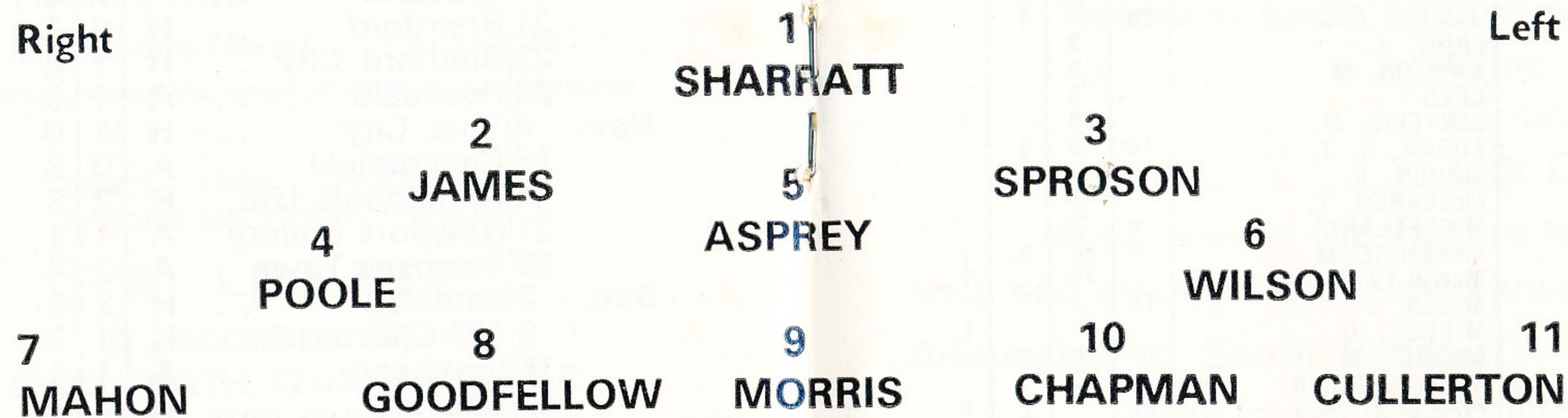
## PORT VALE

Sub. : DONALD

White Shirts, White Shorts, White Stockings

Right

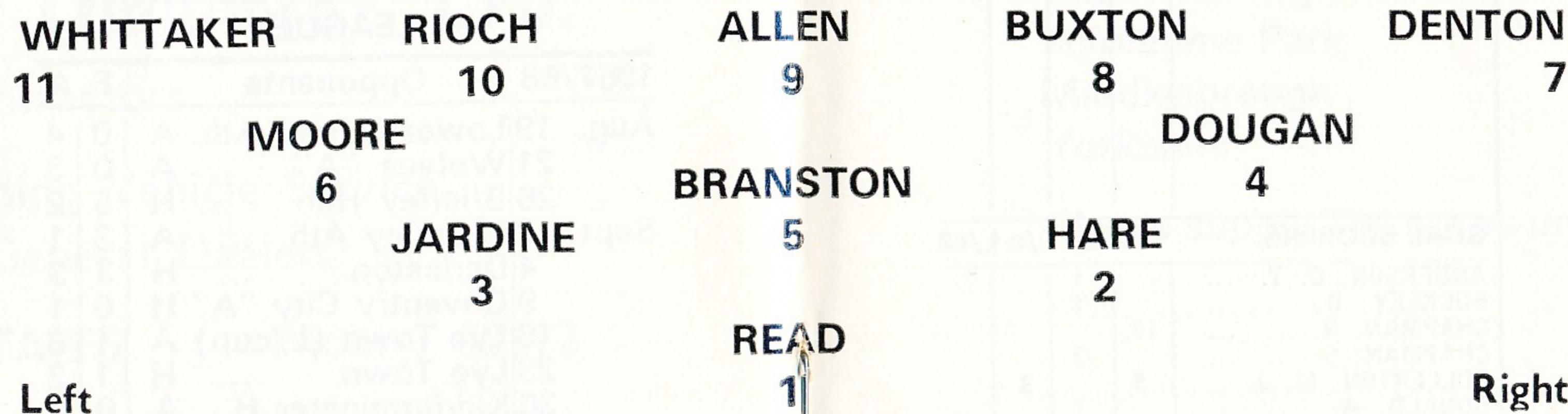
Left



Referee —  
 Mr. J. G. D. LEWIS  
 (Port Talbot)

**REMEMBER...**  
 after the match VISIT  
**TRENTHAM GARDENS**  
 Fully Licensed Bars - Ballroom  
 Dinner Dances  
 Phone : Stoke-on-Trent 57341

Linesmen —  
 Mr. A. BURBIDGE (Runcorn) Red Flag  
 Mr. R. R. JONES (Wrexham) Orange Flag



Left

Right

Sub. : SLOUGH

## LUTON TOWN

Red Shirts, Red Shorts

## CRYSTAL BALLROOM

★ MECCA DANCING  
 NEWCASTLE, STAFFS.

WEDNESDAY & THURSDAY  
 EVENINGS...

### OVER 21 NIGHT

MODERN DANCING and  
 CONTINENTAL NITE SPOT

SATURDAY...

### PALAIS NIGHT

8 p.m. to 2 a.m.

- ★ 5 BANDS
- ★ 3 BALLROOMS
- ★ 1 ADMISSION

LATE BARS - LATE BUSES

## S. D. TAYLOR LIMITED

(INCORPORATING S. D. TAYLOR (WHOLESALE) LIMITED)  
 Manufacturers, Importers and Wholesalers  
 41/69 HUNTBACH STREET - HANLEY  
 STOKE-ON-TRENT Telephone : 23535 (10 lines)

COMPLETE CLOTHIERS & OUTFITTERS, CARPETS, BEDDING,  
 FURNITURE, HOUSEHOLD GOODS. ALL ELECTRICAL GOODS,  
 INCLUDING WASHERS, FRIDGES, RADIOS.

APPEARANCES	1st	2nd	L/c	L/c2
ALEKSIC, M. ....		1		
ANDERSON, G. T. ....		2		
ASPREY, W. ....	2			
BAILEY, M. ....		17		1
BANNISTER, P. F. ....				
BARKER, A. ....		12		
BELL, S. ....		9		1
BOULTON, C. W. ....	21		1	
BROOMHALL, K. ....		20		1
BUCKLEY, D. ....		1		
CHAPMAN, R. ....	26		2	
CHAPMAN, S. ....	1	19		1
CULLERTON, M. J. ....	25		2	
DONALD, A. ....	6	9		1
GOODFELLOW, J. ....	13	3	2	
GIBBON, M. ....	2	14		1
GREEN, J. ....	11			
HILL, M. J. ....	7	5	2	
JAMES, J. G. ....	24		1	
LANG, J. ....		2		
LAWTON, M. ....		2		
LEES, ....		5		
LINTERN, M. ....		19		1
LOGAN, G. T. ....	14	5	1	
MAHON, R. ....	16	4		
McCLAREN, T. ....		7		
McCLELLAND, ....	4	7		
McKENZIE, M. ....	6	16	2	1
McNULTY, W. G. ....		15		1
MILES, T. ....	13	3		
MILLER, D. ....		9		1
MORRIS, M. ....	17	6	2	
MOUNTFORD, R. ....		2		
POOLE, H. ....	21		2	1
SELLICK, D. ....		6		
SHARRATT, S. ....	26		2	
SLINGSBY, P. ....		1		
SPROSON, R. ....	16	1	1	
STEELE, S. F. ....		2		
TAIT, S. ....		7		
WILSON, R. ....	23		2	
WOOD, R. L. ....		1		

GOAL SCORERS	1st	2nd	L/c	L/c2
ANDERSON, G. T. ....		1		
BUCKLEY, D. ....		1		
CHAPMAN, R. ....	19			
CHAPMAN, S. ....		3		
CULLERTON, M. J. ....	5		3	
DONALD, A. ....		1		
GIBBON, M. ....		2		
GOODFELLOW, J. ....	1	1		
HILL, M. J. ....	1	2		
JAMES, J. G. ....	1			
LINTERN, M. ....		1		
LOGAN, G. T. ....		1		
MAHON, R. ....	5			
McCLELLAND, ....		3		
McLAREN, T. ....		2		
McKENZIE, M. ....		5		1
MILLER, D. ....		1		
MORRIS, M. ....	6	4		
POOLE, H. ....	3			
SPROSON, R. ....	1			
OWN GOAL	1	1		

**INTERNATIONAL FOOTBALL LEAGUE MATCH**  
**THE FOOTBALL LEAGUE v. THE SCOTTISH LEAGUE**  
 at AYRESOME PARK, MIDDLESBROUGH  
 on WEDNESDAY, 20th MARCH, 1968  
 Kick-Off — 7-30 p.m.

Tickets in advance for this Match are available from The Secretary  
**Middlesbrough Football Club, Ayresome Park, Middlesbrough, Yorks.**  
 as follows:—

<b>Reserved Seats</b> — Centre Stands	-	<b>12s. 6d.</b>
Wing Stands	-	<b>10s. 0d.</b>
Terrace Seats	-	<b>8s. 6d.</b>
East End Seat	-	<b>7s. 6d.</b>

Applications for Tickets should be accompanied by remittance and stamped addressed envelope for return of Tickets.

**Admission** to South Paddock — **5s. 0d.** - Ground — **4s. 6d.**  
 Boys — **2s. 0d.** will be Cash at the Turnstiles.

**ORDER FORM (to be detached for use by Clubs)**  
**THE FOOTBALL LEAGUE v. THE SCOTTISH LEAGUE**  
 20th MARCH, 1968

To:— **The Secretary**  
**Middlesbrough Football Club Limited**  
**Ayresome Park**  
**Middlesbrough**  
**Yorkshire**

Please supply Tickets as under:—

- ..... @ **12s. 6d.** (Centre Stand)
- ..... @ **10s. 0d.** (Wing Stands)
- ..... @ **8s. 6d.** (Terrace Seats)
- ..... @ **7s. 6d.** (East End Seat)

ENCLOSURE FOR PAYMENT: £ : :  
 By Cheque By P/Order By M/Order By Cash

..... Secretary  
 ..... Club

**CLOSING DATE FOR APPLICATIONS — 10th FEBRUARY, 1968**

# LUTON TOWN

## PEN PICTURES OF PLAYERS

for Season 1967 - 1968

### Tony READ (Goalkeeper)

Born at Haydock. His first club was Sheffield Wednesday, later going to Peterborough from whom we secured him in March 1965. Is equally well at home in the Centre Forward position.

### Tommy HARE (Full Back)

Signed from Southampton in July 1967. A Scot whose birth place is Motherwell.

### Freddie JARDINE (Full Back)

Another Scot, from Edinburgh, he played for Dundee before coming South to Luton in 1961. Although originally an Outside Left he has now settled into the left back position.

### Max DUGAN (Half Back)

Cost Luton a sizeable transfer fee in December 1966. His two previous clubs were Queens Park (Scotland) and Leicester City. Gained five Amateur International Caps whilst with the former.

### Terry BRANSTON (Centre Half)

Signed in June from Northampton Town for whom he played regularly and has appeared in all four Divisions of the Football League. He was born at Rugby.

### John MOORE (Wing Half)

His third season at Luton, being a regular member of our first team. Previously played for Motherwell. Was born at Hart Hill (Scotland).

### Graham FRENCH (Winger)

Born at Wolverhampton. Has previously played for Shrewsbury, Swindon, Watford and Wellington before joining Luton in 1965. Has several Youth International Caps for England.

### Robin WAINWRIGHT (Inside Forward)

Born at Luton. Our newest recruit, having signed apprentice forms in July 1967. Played four time for England Boys Club last season.

### Keith ALLEN (Inside Forward)

Joined this club from Stockport, in exchange for Derek Kevan in March 1967. Quickly became a favourite here, he previously played for Grimsby and Portsmouth. A Native of the Isle of Wight.

### Bruce RIOCH (Inside Forward)

Born at Aldershot. lived in Luton most of his life. First signed for Luton as an apprentice in 1963. Taking the full time ticket in September 1964 and is a regular member of the first team.

### Ray WHITTAKER (Winger)

A Londoner from Bow. He played for the Arsenal with whom he gained England Youth International Caps before coming to Luton in March 1964. He has been a regular member of our first team ever since.

### Micky BROWN (Forward)

Was born at Slough and made his League debut for Fulham where he spent five seasons followed by two seasons at Millwall, joined Luton in July 1967.

### Peter MOONEY (Winger)

A Luton boy on our staff as an apprentice. Already has made his mark in our reserve side, although still eligible for youth football.

MAKE A WARM HOME  
YOUR **GOAL**

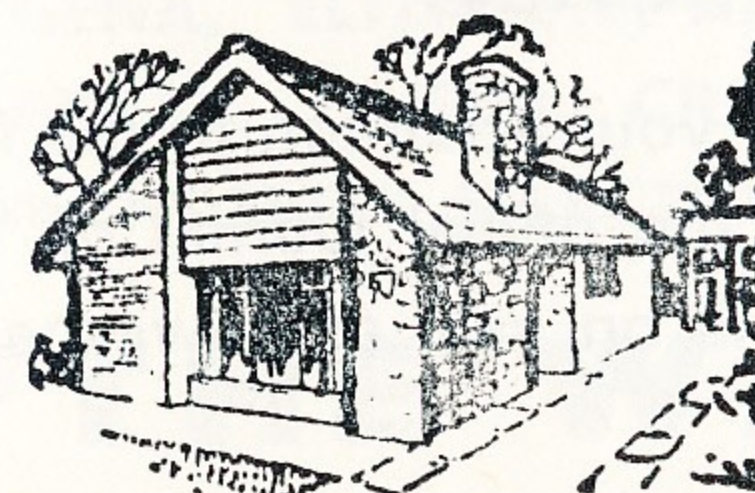
**KICK OFF BY PHONING . . .**

**LINDSAY HEATING  
AND BOILER SERVICE**

**51 DILHORNE ROAD  
FORSBROOK**

Telephone BLYTHE BRIDGE 3780

**DON'T LET WINTER  
PENALISE YOUR COMFORT  
AND YOUR CUP  
WILL RUNNETH OVER**



High-Class Painter & Decorator

**B. HOWELL**

150-152 NORMACOT ROAD

LONGTON - STOKE-ON-TRENT

Telephone : Stoke-on-Trent 33952



Telephone : Stoke-on-Trent 32756

AFTER THE MATCH  
WHY NOT CALL ON US . . .

**COBRIDGE  
SERVICE STATION**

GREEN SHIELD STAMPS

TREBLE STAMPS ON PETROL  
500 STAMPS ON EVERY TYRE  
250 STAMPS ON EVERY BATTERY

SHORT-NOTICE SERVICING AND REPAIRS  
BRAKE RE-LINING  
SILENCER AND EXHAUST REPAIRS  
ELECTRONIC TUNE-UP  
WHEEL BALANCING  
BEAM SETTING

and the BEST PETROL  
of them all — CLEVELAND

Waterloo Road, COBRIDGE  
Next to the Legion Club



## The Silverdale Co-operative Society Limited

Invite you to be **RIGHT INSIDE**  
and Share in the **Trading Profit.**

Last year over  
**£100,000** was returned to **Members**  
in Branches in Newcastle  
and District.

Let's Co-operate ...

It pays Dividends



## Signs of GOOD FOOD

Licensed Restaurants and Grill

Liverpool Road  
NEWCASTLE, Staffs.  
Phone : 66236

Kingcross House  
LONGTON  
Phone : 32407



THE  
CHANCERY GRILL

## "THE FOOTBALL LEAGUE REVIEW"

We are asked by The Football League to draw your attention to the fact that EVERY SATURDAY from AUGUST 19th, the official journal of The League, "THE FOOTBALL LEAGUE REVIEW", is on sale at newsagents and booksellers.

Priced one shilling, the journal carries official news and views and each week will feature photographs of League Teams and players in full colour. The magazine is packed with background articles of the game and its personalities and should be a "must" for every football fan.

If you have any difficulty in getting a copy from your newsagent please contact the distributors — **Vernon Holding and Partners Ltd.**, 43 - 44 Shoe Lane, London, E.C.4. (Phone : FLEet Street 5591).

## CLUB INFORMATION GUIDE

The Football Association have asked us to draw spectators' attention to the fact that copies of the above publication can be obtained from the Association price 3s. 0d. including postage.

Applications for copies together with P.O. or Cheque to cover cost should be sent to **The Secretary, Football Association, 22 Lancaster Gate,**

FOR ...  
ENGINEERING SUPPLIES  
and  
ELECTRICAL CONTRACTING

## FRANCIS W. HARRIS

& CO. LTD.

Moorland Road, BURSLEM

Stoke-on-Trent

Phone : Stoke-on-Trent 87181 (4 lines)

## ADAMS & FREEMAN

ESTATE AGENTS

21 HOPE STREET, HANLEY

Phone : Stoke-on-Trent 25052

Consult us for Properties in and  
around the Potteries  
New Property Specialists  
Mortgages Arranged

Also 184/6 Uttoxeter Rd., Blythe Bridge

Phone : Blythe Bridge 3234

ESSO LUBRICATION SERVICE

BATTERIES, TYRES and ACCESSORIES

## CLAYTON SERVICE STATION

(Proprietor DENNIS REDFERN)

CRYPTON PERFORMANCE TUNING

VEHICLE RECOVERY SERVICE

CLAYTON ROAD - NEWCASTLE - STAFFS.

TELEPHONE 63189

A.A.

DAY AND NIGHT SERVICE

R.A.C.

HYGENA, ELIZABETH ANN, EASY CLEAN AND OTHER SINK UNITS

PARKRAY, QUEEN, CRANE BOILERS

A WONDERFUL SELECTION OF APPLIANCES at ...

## "THE WAREHOUSE"

SANITARY SUPPLY CO. LTD CANNON STREET, HANLEY

Telephone : STOKE-ON-TRENT 23627/8

When talking about  
MOTOR CYCLES  
or their REPAIRS  
talk about ...

## Foley Motors Ltd.

Areas Leading  
MOTOR CYCLE DEALERS  
M.O.T. TESTING STATION

67/69 KING STREET, FENTON

Phone : Stoke-on-Trent 48882

## LINDOPS ...

Army - Admiralty - Air Force  
SURPLUS STORES

After the match, see our full  
range of tools for the motorist,  
craftsman and Do-it-Yourself  
experts.

New & Government Surplus Tools  
Top quality Paint at less than  
half price.

19 HOPE STREET, HANLEY

STOKE-ON-TRENT

## **Port Vale Social Club**

THE FINEST CLUB  
IN THE MIDLANDS

NEW MEMBERS WELCOMED

.....

First Class Lounge

.....

Super Cocktail Bar

.....

M. & B. - Red Barrel

.....

Bass and Worthington  
Cannister Beer

.....

**DON'T FORGET GOLDEN  
GOAL TICKETS — 6d. each**

**EVERY TYPE OF PRINTING**

LITHO AND LETTERPRESS

INSTANT SERVICE

SHORT TERM CREDIT

HAPPY BUSINESS RELATIONSHIP

ARTISTIC DESIGNS

NATION WIDE SERVICE

**ELISHAN PRINTING &  
PUBLISHING LTD**

**ELISHAN ART SERVICES LTD**

**58 EDGWARE WAY, MIDDLESEX**

Telephone 01-958-6655/6/7

**SHERWINS**

*for*

**PIANOS**

**ORGANS**

**RADIO**

**TELEVISION**

**VALVES**

**AMPLIFIERS**

**L. P. RECORDS**

**EVERYTHING**

**MUSICAL**

**SHERWINS**

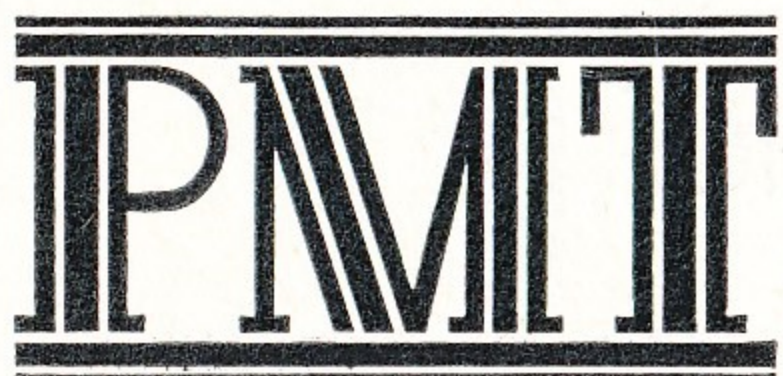
**OF HANLEY**

**RECKONING ON A RECON.?**

**ECCLESTON BROS., 70 Moorland Road, BURSLEM**  
**RECONDITIONED ENGINES AT REDUCED PRICES**

e.g. MINI from £33 14s. 0d. Do yourself a favour—**SEE US FIRST**

**EXCURSIONS**  
*to*  
**AWAY MATCHES**  
*by*



SEE ANNOUNCEMENTS  
IN THE  
**"SENTINEL"**  
AND AT  
**BOOKING OFFICES**  
TEL. STOKE-ON-TRENT 48811

**SOMERVILLE  
SERVICE STATION**

---

CRYPTON TUNING  
ELECTRONIC WHEEL  
BALANCING and TRACKING

FULL SERVICING  
AND REPAIRS

CAR HIRE

MOBIL DEALER  
OILS and PETROL

---

Weekdays - - 7-30 to 10 p.m.  
Sundays - - 9-30 to 10 p.m.

**Leek Road, HANLEY**  
Phone : Stoke-on-Trent 22025

**QUALITY CASTINGS...**

IN ALL  
NON-FERROUS ALLOYS  
also in HIGH DUTY IRON and  
S.G. and S.G. NI-RESIST IRON



from

**T. M. BIRKETT, BILLINGTON  
& NEWTON LTD.**  
**HANLEY and LONGPORT**  
**STOKE-ON-TRENT**

Head Office : HANLEY

Phone : Stoke-on-Trent 22184

*Buckley  
Bros.*

**VOLKSWAGEN  
CENTRE**

Talke Road, Chesterton  
Newcastle 51685

---

---

Your own V.W. centre  
with its  
**COMPLETE**  
services