

LUTON TOWN



Telephone : Luton 23151

FOOTBALL LEAGUE CUP—Round 1

LUTON TOWN

v.

WATFORD

Wednesday, 14th August, 1968

Kick-off 7.30 p.m.

Official Programme : Price 1/-



174
Biscot
Road
Luton

WILLIAMS & RICHARDSON

Electrical, Radio and Television Engineers

OFFICIAL

HOOVER SALES and SERVICE

Telephone:

LUTON

26262

POST THIS COUPON TO OUR ADDRESS ABOVE TODAY

Please send me further details of the Hoover.....

Name

Address

Tel No.

LILLYWHITE (LEAGRAVE) LIMITED

Timber and Fencing Specialist

LARCHLAP : LARCHLINE : LARCHWEAVE
PINE - RAIL : PINE - BOARD : PINE - PAIL
INTERWOVEN

Hire Purchase terms arranged

Call or telephone Luton 52140

TRADE or RETAIL Monday to Friday 8 a.m. to 5.30 p.m.
Saturdays 8 a.m. to 4.30 p.m.

ODEON

Lucky Number Draw

*Three double
Complimentary Tickets
Free*

Three Lucky Numbers will be announced at today's match. The holders will each be given a double Complimentary ticket for the Odeon Cinema, on presentation of the Programme to the Secretary's office.

Your Number is

No 0286

Join the

**Bobbers Stand
and Supporters Club**

1/2 per year

21/- Life Membership

LUTON TOWN FOOTBALL AND ATHLETIC CO., LTD.

Established 1885 Incorporated 1897
First Professional Side Season 1891 - 1892

Directors

Chairman : T. Hodgson

J. A. C. Bain : A. T. Hunt : R. I. Burr : L. S. Hawkins : H. Richardson

Secretary : R. Readhead Manager : A. Brown

Honorary Medical Officer : C. J. Buckingham, Esq., M.B.

Hon. Dental Surgeon : A. Hargreaves, Esq.

Hon. Solicitor : E. Waller, Esq. Auditors : Messrs. Keens, Shay, Keens & Co.

CLUB NOTES

AFTER last Saturday's triumph over Oldham Athletic, we look forward confidently to the League Cup encounter with our old friends and neighbours, Watford, tonight, a clash that should attract our biggest attendance for many years.

While on the subject of crowds, it is pertinent to say that we regarded with considerable satisfaction the size of the one on Saturday, 14,747, which was bigger than anything we drew for a Saturday match during last season.

Then, the top crowd was 14,643 in the last match with Brentford and it is certainly a matter of encouragement to receive such support on the first day of the season when many people are still on holiday.

Now, our earnest wish is for even greater support and, in return, we hope that the team will continue to serve up the sort of sparkling entertainment they produced against Oldham Athletic.

While these are early days to talk about further promotion, it is fair to say that we have every hope of going near to it this season and tonight's meeting with Watford, one of the stronger teams in the Third Division will give us a useful line as to our chances.

It was, of course, unfortunate that Graham French should have been injured and that he is unlikely to be available for two or three weeks but outside right is a position for which we have ample cover.

Tonight's match is likely to produce intense rivalry and an appeal is made to the few 'hot heads' in the crowd

who will persist in strewing the pitch with toilet rolls.

At the same time, a warning is issued that if this sort of conduct continues, drastic action will be taken.

We also appeal to supporters to make their way to the ground a little earlier than they are at the moment. So many are leaving their arrival until about 10 minutes before kick-off time that long queues are forming and it is impossible to cope with them quickly, with the result that some are missing the start of the games.

Next Saturday, both the first and reserve teams will be away and the attraction here is the South East Counties League match between our youth team and Millwall Athletic.

Finally, the F.A. Diary is now on sale, obtainable by application to the Football Association, 22, Lancaster Gate, London, W.2., price 5/6. This contains all the League fixtures, last season's tables and a host of useful information.

Today's Football

was kindly donated by

Mr. Eddy Feeney

**MELSON
ARMS**

We're top of the league!

Team effort.

That's what makes Skefko the leading manufacturer of rolling bearings in the country. We're working together to make even better bearings. Faster. Cheaper. And always on time.

What's in it for us? A good secure job for a start. And good benefits and promotion prospects too. Take it from us - Skefko's a great company to team up with.



SKF

THE SKEFKO BALL BEARING CO., LTD. LUTON, BEDFORDSHIRE

LUTON TOWN FOOTBALL CLUB POOL

LUCKY NUMBERS (UP TO WEDNESDAY) — WEEK 15 — COLOUR STONE

	£15	£5	£5	£2	£2	£2
Monday	16997	01772	07583	11012	02841	03741
Tuesday	23031	09551	13476	04195	19994	21716
Wednesday	14080	20759	00647	18642	03429	08554

FOOTBALL RESULTS — WEEK 15 — COLOUR STONE

£50 3 Highest Scores — 14 Goals 2 Dividends — £25/0/0

09 37 51
28 37 51

£25 3 Next Highest Scores — 13 Goals 9 Dividends — £2/15/7

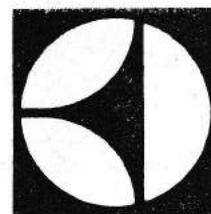
09 28 37
09 28 51
37 51 Plus One of 02 13 16 22 30 35 42

£20 3 Most Against — 14 Goals 1 Dividend — £20/0/0

12 31 39

£15 Accumulator Not Won carried forward to Week 16

Plus £82 in I.O.U.'s



for the best of a cold, clean,
hot, washed, shining world!

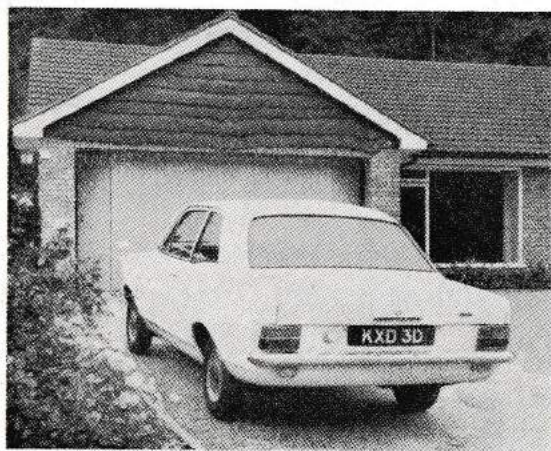
Electrolux

REFRIGERATORS · FLOOR POLISHERS

CLEANERS · ELECTRIC RADIATORS

STORAGE RADIATORS · DISHWASHERS

ELECTROLUX LIMITED · LUTON · BEDFORDSHIRE



Home or Away

**Viva's a
winner
all the way**

Saloon prices start at £650 inc. P.T.
Estate prices start at £788 inc. P.T.



Viva. The one-litre world beater. With best power-to-weight ratio in its class. Wide-track stability. Coil-spring suspension all round, for sports car roadholding. 'Space-curve' styling for extra comfort. Looks, luxury, value—Viva is top-of-the-table in the one-litre league.

The Vauxhall Breed's got style.

PEN PORTRAITS OF OUR VISITORS

Bert Slater. Signed from Dundee in May 1965. In a successful career he kept goal for Falkirk when they won the Scottish Cup in 1957. Helped Liverpool back to Division 1 status in 1962 and was in Dundee's team that won through to the European Cup Semi-Final in 1963. Gained a Scottish under 23 cap against Wales in 1959. An ever present member of the First Team last season, Bert has now made 145 First Team appearances.

Duncan Welbourne. Joined Watford from Grimsby Town in November 1963. He was with the 'Mariners' for five seasons and helped them regain Division 2 status. Has played more First Team games for Watford than any other player on the Club's books, the total at the beginning of this season being 216.

John Williams. John was born in London near to 'Spurs' Ground. Signed originally as an apprentice he became a full professional in 1964 and so far has made 133 first team appearances. Did not miss a First Team match last season.

Brian Garvey. Brian had eight seasons with Hull City before joining Watford in July 1965. Did not miss a First Team game last season and had made 139 appearances for the Club. A qualified coach, Brian has spent most of the summer in Zambia with a party of coaches and players seeking to improve the standard of football in that country.

Keith Eddy. Keith became a Watford player in July 1966 after previously playing for Barrow. Last season he made 37 League appearances and 6 Cup appearances to bring his total for the Club to 95. Appointed 'skipper' of the Club towards the end of last season. His hobbies include golf and table tennis.

Dixie Hale. Born in Waterford, Dixie was first signed from Waterford by Swansea Town. He gained several caps for the League of Ireland. From Swansea he moved to Barrow and then on to Workington before signing for Watford in July 1967. Last season he made 48 First Team appearances and scored 6 goals.

Stewart Scullion. Prior to coming to Watford in February 1966, Stewart was with Charlton Athletic who signed him from Chesham United. Born in Boness, he has lived in Ruislip for many years but moved into Watford during the summer following upon his marriage. Scored nine League goals in season 1967/68 and some of them were indeed memorable ones.

Barry Dyson. Born in Oldham, Barry commenced his career with Bury in 1960 and moved on to Tranmere in 1962. It was with this club that he made his reputation as a goalscorer finding the net over 100 times. He moved to Crystal Palace in 1966 and came to Watford in January 1968. During the remainder of the season he made 20 appearances and scored 15 goals to finish as leading scorer.

Terry Garbett. Terry came south from Middlesbrough in August 1966 and finished his first season as leading goalscorer with 18 goals. Last season he found the net on 14 occasions. So far he has made 96 First Team appearances for Watford scoring a total of 32 goals. By way of relaxation Terry is a keen fisherman.

Tom Walley. Tom was born in Caernarvon and after leaving school played for the local side. Spotted by an Arsenal scout he eventually joined the staff at Highbury. Tom became a Watford player in March 1967 and made 49 First Team appearances last season and continued to captain the Welsh under 23 eleven. Was also selected as reserve for Wales in the full International against West Germany.

Bernard Lewis. Transferred to Watford from Cardiff City in November 1967 for whom he signed professional terms in 1963. He played nearly 100 cup and League games for the 'Bluebirds' including European Cup matches. He has won 5 under 23 caps for his native Wales.

Brian Owen. Brian came to Watford as an amateur, became an apprentice and finally a full professional. He gained an England Youth cup against Switzerland in 1963. Although only 23, he has served the Club longer than any other player at present with the Club. In his spare time he is studying to become a physiotherapist.

CONNELLS

Auctioneers, Surveyors
Valuers and Estate Agents

5, Upper George Street, Luton

Telephone: 31261 for

Houses and Bungalows

COUNTRY HOUSES, COMMERCIAL AND
INDUSTRIAL PREMISES, COMPULSORY
PURCHASE NEGOTIATIONS IN

Luton and Surrounding Districts

Branch Offices throughout
HERTFORDSHIRE, BEDFORDSHIRE, BUCKINGHAMSHIRE
and at 62, GROSVENOR STREET, LONDON, W.1.

CONNELLS

CO OP

“ a store for all seasons ”

LUTON CO-OP SUPER STORE

the complete one-stop family shopping centre

NEW BEDFORD ROAD

AND BRIDGE STREET

“ its all at the Co - op now ! ”

FOOTBALL LEAGUE — DIVISION THREE

BARROW v. LUTON TOWN

Saturday, 17th August, 1968

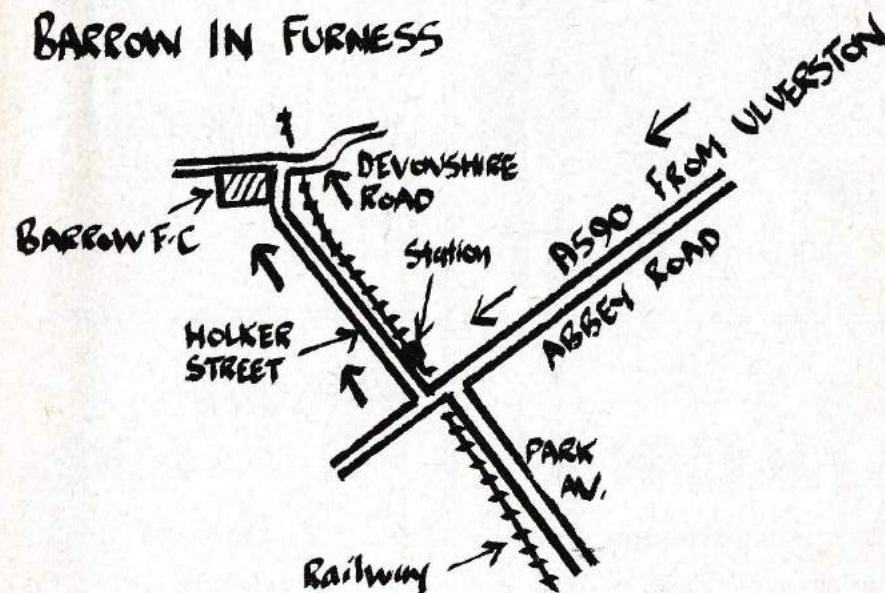
Kick-off 3 p.m.



Going by Car ?

RAC members . . . For a FULL
Itinerary, of future away games,
including Maps, Places of Interest,
etc., write to RAC, 130, St. Albans
Road, Watford. Telephone : 41234

BARROW IN FURNESS

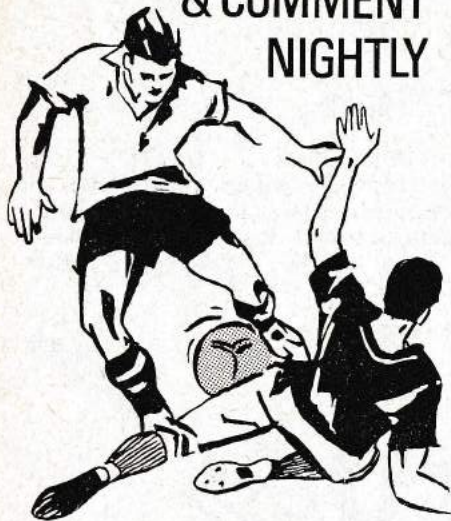


FROM LUTON

Leave by A 505 as for Dunstable
Join M 1 3 miles
Newport Pagnell Services 21 miles
Watford Gap Services 45 miles
At 2m. on, follow signs
“ Coventry M 45 ”
Join A 45
Follow signs
“ M 6 Motorway ”
Coventry by - pass 60 miles
A 45, A 452, A 446, A 5 to :—
M 6 Motorway 101 miles

Knutsford Services 151 miles
End of Motorway 220 miles
Follow signs
“ Kendal A 6 ”
At 9m. on, Turn L, A 590
Newby Bridge 239 miles
Ulverston 248 miles
BARROW 256 miles
Enter by Abbey Road.
Cross railway bridge and then turn
R into Holker Street.
Football Ground at end.

**GOOD EVENING
FOOTBALL NEWS
& COMMENT
NIGHTLY**



EVENING **POST**

Keep Right on Top

'RONS'

*Gentlemen's
Hairdressers and
Stylists*

6, MILL STREET
LUTON

Telephone: Luton 21961

ALSO AT
127, High Street North, Dunstable
Telephone: Dunstable 62063

★ *7 Chairs Operating* ★

INTERNATIONAL STAFF

**RICHARDSON
and BOTTOMS**

LIMITED

*Builders
and
Contractors*

107, BISCOT RD.
Luton

Telephone: 25628

**BARRITZ
CARS**

TONY READ
MIKE EVANS

40-42, Park Street
Luton

Telephone: Luton 30625

CONTACT US AFTER THE
MATCH ABOUT A NEW
OR QUALITY USED CAR

*"Buy with confidence
from
some one you know"*

TODAY'S LINE-UP

Luton Town

Colours—

White and Black

1. Read
2. Dougan
3. Jardine
4. Slough
5. Branston
6. Moore
7. Ryan
8. Lewis
9. Sheffield
10. Rioch, B.
11. Harrison

SUBSTITUTE—

12. Allen

Watford

Colours—

Blue and White

1. Slater
2. Welbourne
3. Williams
4. Garvey
5. Eddy
6. Hale
7. Scullion
8. Dyson
9. Garbett
10. Walley
11. Lewis

SUBSTITUTE—

12. Owen

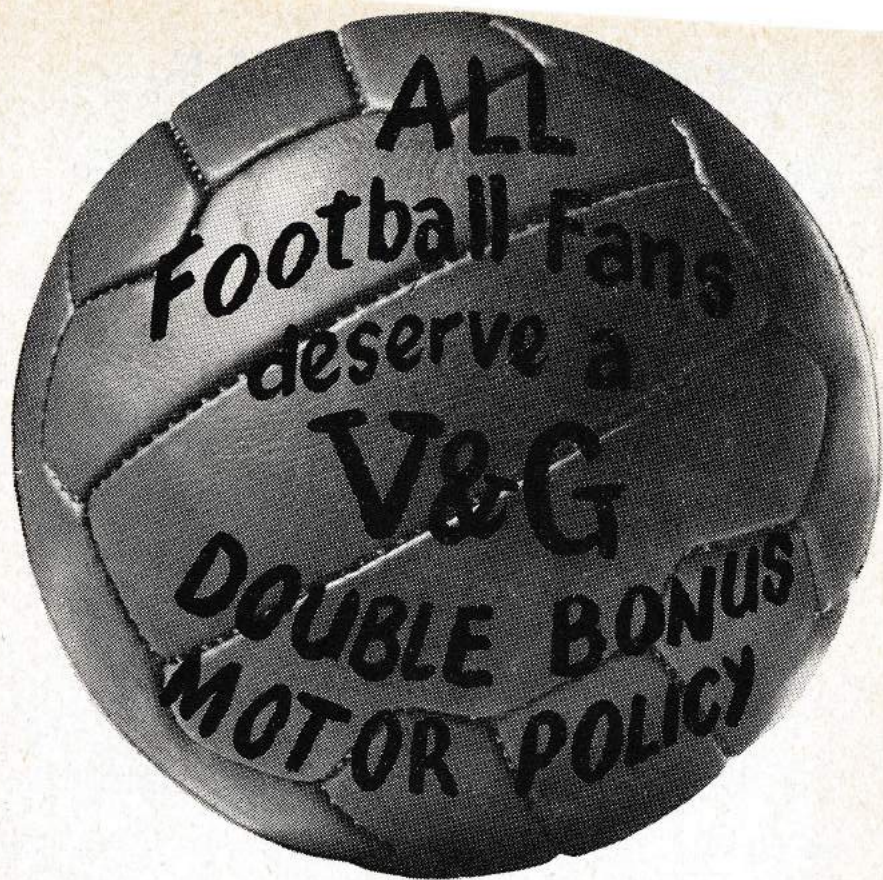
Referee :
Mr. B. H. Daniels
(Rainham)

Linesmen :
Red Flag :
Mr. R. S. Ashford
(London)

Orange Flag :
Mr. F. W. Webb
(Broxbourne)

**WHITBREAD
TANKARD**





**THE V&G
DOUBLE BONUS
MOTOR INSURANCE POLICY
GIVES FAIRER TERMS
TO EVERY DRIVER**

For further information contact your local officially appointed V & G Insurance Broker, or write or phone the address below.

V&G THE VEHICLE & GENERAL GROUP OF INSURANCE COMPANIES

Group Headquarters,
Administration & Operations;
Bushey House,
High Street, Bushey,
Hertfordshire.
Tel: 01-950 4311.

THE VEHICLE & GENERAL INSURANCE CO. LTD.
LIFE, CASUALTY & GENERAL INSURANCE CO. LTD.
AUTOMOBILE & GENERAL INSURANCE CO. LTD.
THE GENERAL & COMMERCIAL MOTOR INSURANCE CO. LTD.
METROPOLITAN GENERAL INSURANCE CO. LTD.
WORLD AUXILIARY INSURANCE CORPORATION LTD.
PIONEER LIFE ASSURANCE CO. LTD.

LEAGUE MATCHES

Players Appearances and Goal Scorers

Names	APPEARANCES			GOALS		
	1st Team	2nd Team	'A' Team	1st Team	2nd Team	'A' Team
ALLEN	1	1
BRANSTON	1
BROWN
BUXTON
DENTON
DOUGAN	1
FRENCH	1
HARRISON	1	1
JARDINE	1	1
LEWIS	1	1
McDERMENT
MOORE	1
POTTER
READ	1
RIOCH, B.	1
RIOCH, N.
RYAN
SHEFFIELD	1
SLOUGH	1
TAYLOR
WHITTAKER
WILLIAMS
AMATEURS
OPPONENTS

Luton Bobbers Stand and Supporters Club Notes

Membership of an organised supporters Club is the surest way of combating the wave of hooliganism that football is now afflicted with.

On our away travels those who go under the Club name know that they have the good name of our Club at stake and take pride in belonging to our Supporters Club.

We point out that any member of our Club who is found using the shocking language that comes at times from the Oak Road "Kop" will face expulsion at once. Members can also help us in combating this scourge.

During the season there will be International tickets available for

members only. All orders must be placed one month in advance.

We have Luton Town rosettes at 2/- and every other League Club at 2/6. Do not buy from outside sources for the profits of the shop helps the Club.

Tonight a great welcome to all supporters from our neighbours Watford and especially **both Supporters Clubs**. May they patch up their differences. The Club will be open before and after the game and we look forward to meeting old friends again.

FRANK SHEPHARD.

entertainment...1970 style



CESAR'S PALACE

THIS WEEK

John Tremaine : Judy Cannon

NIGHTLY SPECTACULAR INTERNATIONAL STAR STUDED CABARET



DINE & DANCE

8pm-2am

FOUR COURSE DINNER

30/-

PLUS BRITAIN'S MOST
LUXURIOUS CASINO

EUROPE'S MOST ENTERTAINING
NIGHT SPOT

OPEN 7 NIGHTS A WEEK

FOR TABLE RESERVATIONS RING LUTON 51357

we all go to
CESAR'S BOWL!

for

*TENPIN BOWLING

*GOLDEN NUGGETT

*LUXURY CHILTERN LOUNGE

IT'S THE PLACE.2.B

try it! TONIGHT

Today's Half-Time Scores

NOTE. The letter in the Programme corresponds with the letter on the Board—thus A 0-1 means that the first named club has scored 0 and their opponents 1

FIRST LIST

A
B
C
D
E
F
G
H
K
L
M
N

SECOND LIST

A
B
C
D
E
F
G
H
K
L
M
N

THIRD LIST

A
B
C
D
E
F
G
H
K
L
M
N

Forthcoming Matches

Saturday, 24th August

Football League — Division Three

LUTON TOWN

v.

ROTHERHAM

Kick-off 3 p.m.

Wednesday, 28th August

Football League — Division Three

LUTON TOWN

v.

BARNSELY

Kick-off 7.30 p.m.

Saturday, 31st August

Football Combination Cup

Luton Town Res.

v.

Walsall Reserves

Kick-off 3 p.m.

Wednesday, 4th September

Football Combination Cup

Luton Town Res.

v.

Q.P.R. Reserves

Kick-off 7.30 p.m.

W. CHAMBERLAIN

and Co., (Luton) Ltd.

**General Hardware
Merchants**

VALSPAR Laquer and Flat Wall Paint

SISSON'S Siscolin Distemper

PARIPAN Enamels and Water Paint

All Garden Requisites

Enquiries Invited

**106, Dunstable Road
LUTON**

Telephone: 20329

The Old Bell

HARPENDEN (Fully Licenced)

Luncheons served

Monday to Friday



Proprietor: **Tom Hodgson**
Ex-Captain Luton Town F.C.

Large Car Park

For
GOOD
PRINTING



try

E. A. Allen

AND SON (Luton) LTD.

PRINTERS OF QUALITY

2a, Douglas Road

LUTON, Beds.

Telephone: Luton 51626

Printers of this Programme

LUTON F.C.—for FOOTBALL

COSTIN'S FOR COACHES

29-52 Seater Luxury Coaches
for Private Hire

Excursions to away fixtures

G. E. COSTIN
LIMITED

67, WEST ST., DUNSTABLE

Telephone: 64331

FIXTURES

DIVISION THREE

1968	Opponents	Attendance	F	A
Aug. 10 Sat.	Oldham Ath. (F.L.C. 1)	14747	H	4 0
.. 14 Wed.	Watford	..	H	..
.. 17 Sat.	Barrow	..	A	..
.. 24 Sat.	Rotherham U.	..	H	..
.. 28 Wed.	Barnsley	..	H	..
.. 31 Sat.	Gillingham	..	A	..
Sept. 4 Wed.	League Cup 2
.. 7 Sat.	Orient	..	A	..
.. 14 Sat.	Tranmere Rov.	..	H	H
.. 18 Wed.	Mansfield T.	..	H	..
.. 21 Sat.	Brighton	..	A	..
.. 25 Wed.	League Cup 3
.. 28 Sat.	Torquay United	..	H	..
Oct. 5 Sat.	Watford	..	A	A
.. 8 Tu.	Barnsley	..	A	A
.. 12 Sat.	Hartlepoons United	..	H	..
.. 16 Wed.	League Cup 4	..	A	..
.. 19 Sat.	Plymouth Arg.	..	H	..
.. 26 Sat.	Northampton T.	..	H	..
.. 30 Wed.	League Cup 5
Nov. 2 Sat.	Crewe Alex.	..	A	..
.. 5 Tu.	Walsall	..	A	..
.. 9 Sat.	Swindon Town	..	H	..
.. 16 Sat.	F.A. Cup 1
.. 20 Wed.	League Cup S.F.
.. 23 Sat.	Bournemouth	..	H	..
.. 29 Fri.	Stockport Co.	..	A	..
Dec. 4 Wed.	League Cup S.F.
.. 7 Sat.	F.A. Cup 2	..	A	..
.. 14 Sat.	Hartlepoons United	..	H	..
.. 21 Sat.	Plymouth Arg.	..	H	..
.. 26 Th.	Watford	..	H	..
.. 28 Sat.	Northampton T.	..	A	..
1969
Jan. 4 Sat.	Shrewsbury T. (3)	..	A	..
.. 11 Sat.	Crewe Alex.	..	H	..
.. 18 Sat.	Swindon Town	..	A	..
.. 25 Sat.	Walsall (4)	..	H	..
Feb. 1 Sat.	Reading	..	H	..
.. 8 Sat.	Bournemouth (5)	..	A	..
.. 15 Sat.	Stockport Co.	..	H	..
.. 22 Sat.	Bristol Rovers	..	A	..
Mar. 1 Sat.	Oldham Ath. (6)	..	A	..
.. 5 Wed.	Shrewsbury T.	..	H	..
.. 8 Sat.	Barrow	..	H	..
.. 12 Wed.	Reading	..	A	..
.. 15 Sat.	Rotherham U.	..	A	..
.. 19 Wed.	Bristol Rovers	..	H	..
.. 22 Sat.	Gillingham (S.F.)	..	H	..
.. 29 Sat.	Orient	..	H	..
Apr. 4 Fri.	Torquay United	..	A	A
.. 7 Mon.	Manstfield T.	..	A	H
.. 8 Tu.	Southport	..	H	H
.. 12 Sat.	Brighton	..	H	A
.. 14 Mon.	Southport	..	A	A
.. 18 Fri.	Tranmere Rov.	A
.. 26 Sat.	F.A. Cup Final

Football Combination Cup

1968	Opponents	Attendance	F	A
Aug. 17 Sat.	Birmingham	A
.. 21 Wed.	West Ham United	..	H	..
.. 24 Sat.	Leicester City	..	A	..
.. 28 Wed.	Queens P. Rangers	..	A	..
.. 31 Sat.	Walsall	..	H	..
Sept. 4 Wed.	Queens P. Rangers	..	H	..
.. 7 Sat.	Peterborough Utd.	..	A	..
.. 11 Wed.	Leicester City	..	H	..
.. 14 Sat.	Northampton	..	A	..
.. 21 Sat.	Birmingham	..	H	..

Football Combination

1968	Opponents	Attendance	F	A
Oct. 5 Sat.	Bristol Rovers	..	H	..
.. 12 Sat.	Birmingham	..	A	..
.. 19 Sat.	Northampton	..	H	..
.. 26 Sat.	Tottenham H.	..	A	..
Nov. 2 Sat.	Crystal Palace	..	H	..
.. 9 Sat.	Swindon Town	..	A	..
.. 16 Sat.	Ipswich Town	..	A	..
.. 23 Sat.	Chelsea	..	A	..
.. 30 Sat.	Norwich City	..	H	..
Dec. 7 Sat.	Leicester City	..	H	..
.. 14 Sat.	West Ham United	..	H	..
.. 21 Sat.	Peterborough Utd.	..	A	..
.. 28 Sat.	Walsall	..	H	..
1969
Jan. 4 Sat.	Arsenal	..	H	..
.. 18 Sat.	Southampton	..	A	..
.. 25 Sat.	Bristol City	..	A	..
Feb. 1 Sat.	Bournemouth	..	A	..
.. 8 Sat.	Gillingham	..	H	..
.. 11 Tues.	Swansea Town	..	A	..
.. 22 Sat.	Cardiff City	..	A	..
Mar. 1 Sat.	Queens P. Rangers	..	H	..
.. 15 Sat.	Oxford United	..	A	..
.. 26 Wed.	Reading	..	A	..
Apr. 5 Sat.	Plymouth Arg.	..	H	..
.. 19 Sat.	Fulham	..	H	..

The figures 1, 2, 3, 4, 5, 6, refer to
Cup Tie Dates

Copyright of the Football League Limited 1968

NEXT MATCHES

South East Counties League
Saturday, 17th August, 1968
Kick - Off 3 p.m.

Luton Town Youth
v.

Millwall Youth

PRICES OF ADMISSION
Grandstand and Enclosure only
Adults 2/6 : Boys 1/6
Seating 6d. Extra

Football Combination Cup
Wednesday, 21st August, 1968
Kick - Off 7.30 p.m.

Luton Town Reserves
v.

West Ham Reserves

PRICES OF ADMISSION
Grandstand and Enclosure only
Adults 2/6 : Boys 1/6
Seating 6d. Extra

TEMPORARY ADVERT FOR

JASON MANSHOPS LIMITED

47, WELLINGTON STREET
LUTON, Beds.

PROVIDENT CUSTOMERS WELCOMED

BIO - STRATH FOR FITNESS AND ENERGY

This is what **SIR STANLEY MATTHEWS** says about **BIO - STRATH** —
“Recently I found a natural, herbal yeast tonic called Swiss **BIO - STRATH** which provides energy the sportsman needs and helps the body to maintain a high level of fitness. I take **BIO - STRATH** every day myself and consider it an excellent tonic.”

BIO - STRATH is made in Switzerland from live Torula Yeast fed on more than 90 organically grown medical Herbs with pure honey, malt and Bioatta orange juice added.

It gives energy and is useful as an additional aid during treatment of illness and also when convalescent.

It helps you get fit and keep fit!

BIO - STRATH IS AVAILABLE FROM :—

LUTON HEALTH CENTRE

166, Dunstable Road, Luton
(BURY PARK - OPPOSITE TRAFFIC LIGHTS)

Telephone : Luton 29270

Luton's leading newsagents

HOUGHTONS

CONFECTIONERS · TOBACCONISTS
GREETINGS CARD SPECIALISTS

16, The Parade, Hill Rise

150, Sundon Park Road

3, Ashwell Parade, Sundon Park

Jansel House, Stopsley

82, Putteridge Road, Stopsley

217, Dunstable Road

253, Birdsfoot Lane

8, Hillborough Crescent, Houghton Regis

Whenever you are near — Pay us a visit

We will be pleased to serve you

ESTABLISHED 1875

T. & E. NEVILLE
LIMITED

Builders

and Funeral Directors

Marsh Rd. Leagrave

Luton

Telephones :

BUILDING OFFICES - LUTON 53496

FUNERAL OFFICE - LUTON 54902

Also at

77, WEST ST., DUNSTABLE

Telephone : 63764

Reids

Chemists

(LUTON LTD.)

★

For ALL your
PHARMACEUTICAL
TOILET AND
PHOTOGRAPHIC
REQUIREMENTS

★

169, Dunstable Rd.

LUTON

Corner of Kenilworth Road
Telephone : Luton 21760

WILD'S of Luton Ltd.

8/10, Bute Street, Luton

Telephone: 23671

also at

41, High Street North, Dunstable

Telephone: 63275

7, High Street, Bedford

Telephone: 59834

SUPPLIERS TO LUTON TOWN F.C.

The New season has begun, and it brings with it a new outlook on playing kit and equipment. **WILD'S** offer a fantastic range of new ideas in sportswear and accessories by all leading manufacturers.

We hold stocks of over 1,000 pairs of Football Boots by:—

PUMA

The new Wembley £10/2/6

The new Tottenham £6/0/6

The new Fortuna £7/1/6 (as worn by the Town)

The very popular '300' £3/1/0

STYLO BARRETT. The fabulous new GEORGE BEST boot

Revolutionary new lace-up at side ranging from 65/11 in Boys to £5/5/0 in mens sizes

Also the new **GANNEX** with uncuttable nylon uppers 89/11

Other makes by:—

ADIDAS, KINGSWELL, POCOCK, STUART SURRIDGE, SIMLAM, GOLA

From 34/6

Come and see our new stock of Football kit in 30 different colour designs—
A new team could purchase a complete kit i.e. 12 Shirts, 12 Shorts (Bri nylon)
12 pairs Hose (Bri nylon) for only £27/10/0.

We have the best range of Footballs by—

Minerva as used by Luton Town F.C. : Webber : Mitre : Tomlinson
prices from 27/11 in Boys to £10/10/0 (Match)

We hold stocks of all popular Jerseys—

Celtic, West Ham, Spurs, Q.P.R., Coventry, Manchester United, Liverpool, Chelsea
from Boys sizes to Mens

Every Sportsman needs a Tracksuit, from 39/6 to Nylon £7/10/0

For the Men in the 'MIDDLE' the complete Referees kit in the new Bri nylon

Goal Nets : Corner Posts and Flags : Markers : Training Boots : Whistles : Laces

indeed everything for the Sportsman.

We offer excellent terms to Clubs