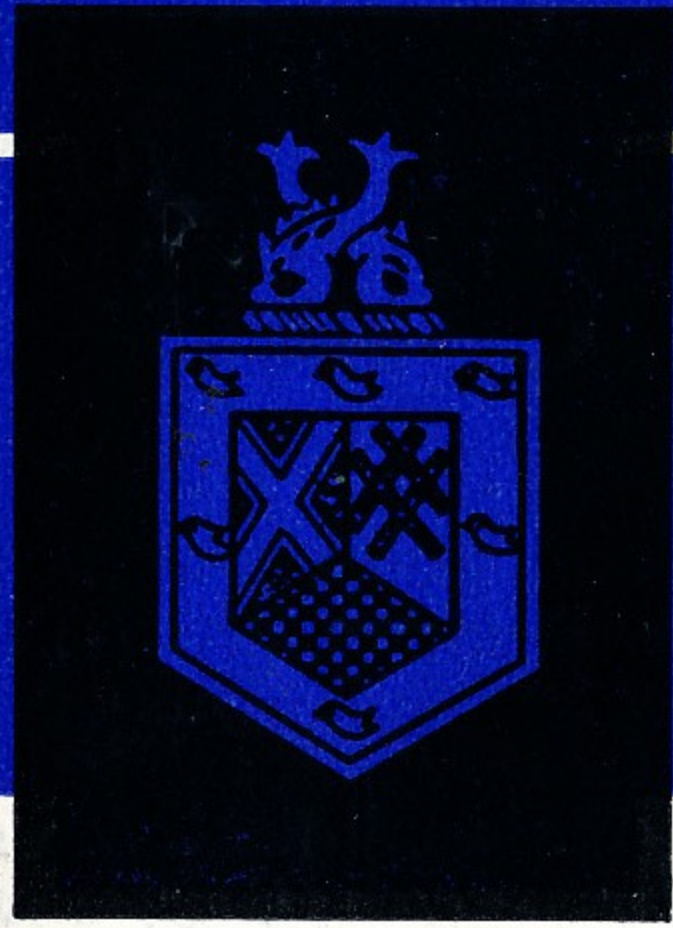
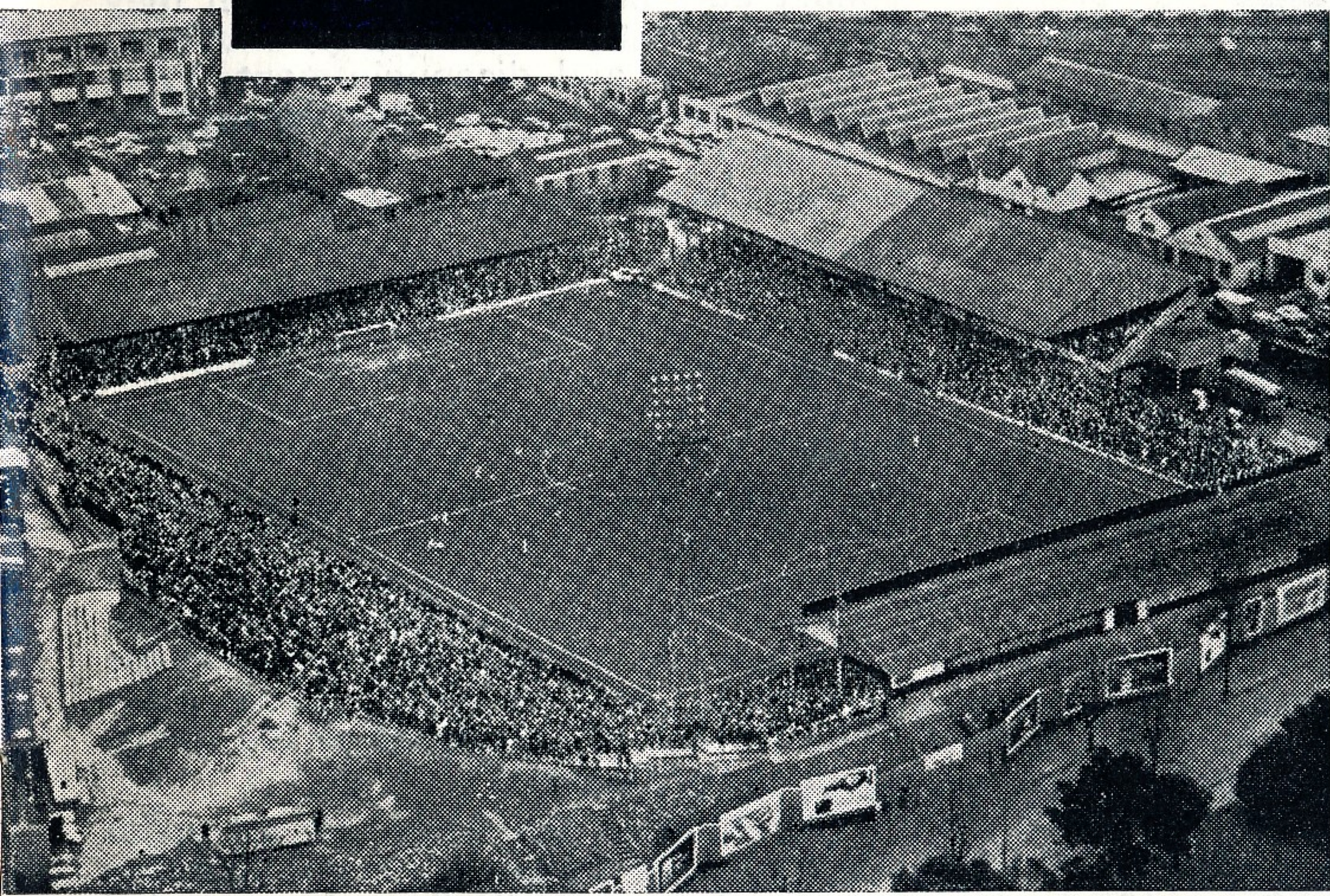


BRIGHTON & HOVE

ALBION



news



AND OFFICIAL PROGRAMME

ALBION v LUTON T.

**FOOTBALL LEAGUE CUP—2nd ROUND
WEDNESDAY, 4th. SEPTEMBER, 1968**

1/-

BRIGHTON & HOVE ALBION FOOTBALL CLUB LTD.

President HIS GRACE THE DUKE OF NORFOLK, E.M., K.G., P.C., J.P.

Directors

T. E. WHITING (Chairman)
H. J. PARIS (Vice-Chairman)
L. H. STRINGER N. WISDOM
A. DE BOER V. S. STEVENS

Hon. Surgeon MR. AUSTIN BROWN

Manager A. MACAULAY

Secretary J. MCINNES

Telephone: BRIGHTON 732970

From the Manager's Chair



Good Evening, Everyone,

Welcome to Luton Town players and officials. Luton were last season's Fourth Division champions and to their great credit have embarked on the Third Division campaign with merit and distinction. They are proudly situated amongst the top clubs.

Their success of last season has been substantially bolstered up by team building, notable signings including Mike Harrison, ex Chelsea and Blackburn Under-23 international winger, Brian Lewis from Coventry and Laurie Sheffield from Oldham, at fees totalling well over £30,000.

They are managed by Alan Brown, the ex-Scottish international, and former Blackpool and Luton star, who missed two cup final appearances with Blackpool owing to injury. But he

achieved his ambition when he played at Wembley with Luton, although Notts Forest took away the famous cup. As a point of interest Alan assisted Luton most ably in the semi-final when they knocked out Norwich City, much to my chagrin and disappointment. Well, it's up to the boys to get me revenge tonight!

Attacking football is what the public want and it would appear they are going to get their desire fulfilled this evening as our opponents averaged three goals in their opening five fixtures. Our own goalscoring sheet looks much healthier this season than last.

Tonight's competition has really established itself and is proving a money spinner to those clubs fortunate enough to have successful runs. The winners of this tie could well be rewarded with a plum home draw against one of the giants of the game. Remember Chelsea?

At Barrow the boys played quite well, but for the second match in a row we had a goal disallowed at a vital moment in the match. Against Torquay and Barrow, the lads have really got on top in the last 15 minutes. And in both matches we had debatable goals disallowed which would have won us the game. That's the only disappointment from the last two matches.

What pleased me was the way we were able to play with such strength in the last quarter of an hour; it reflects very favourably on our training programme.

A. MACAULAY.

Southern Suede & Sheepskin Cleaning Centre

SPECIALIST CLEANERS for all Animal Skin Garments and Accessories

Reconditioning • Retinting • Repairs • Alterations

111 WESTERN ROAD - HOVE - SUSSEX - BN3 1DD

Adjacent to Brunswick Place. Convenient Parking, no meters

All Cleaning carried out at our Works in Hove

3-DAY POSTAL SERVICE AVAILABLE • Return Postal Paid

WE BUY Discarded Furs, Suede and Sheepskin Garments

WE SELL the above Cleaned and Renovated

Your enquiries are invited

also at

153 LEWES HIGH STREET - LEWES

(Receiving Shop only)

Telephone: BRIGHTON 777172

ENGLISH'S OYSTER BAR

AND SEAFOODS RESTAURANT

FULLY LICENSED

EXCELLENT WINE CELLAR

ENGLISH AND CONTINENTAL CUISINE

OPEN ON SUNDAYS

29, 30, 31, EAST STREET

TELEPHONE BRIGHTON 27980

Open until 10.30 p.m.

COFFEE - LUNCHES - DINNERS - FULLY LICENSED

THE FOUR ACES RESTAURANT

Murray's Brasserie Ltd.

WELCOMES YOU FOR GOOD FOOD

Open from 11 a.m. to 12.30 p.m.

K. Lewicki

12 MEETING HOUSE LANE, BRIGHTON
Brighton 26703

And 2 Lowndes Court, Carnaby Street, London, W.1
REGent 0353

★ If you wish a

RADIO

please drop

"RADIO GOLDSTONE"

HOVE

record played on

GOLDSTONE

us a line—to

GOLDSTONE GROUND

BN3 7DE

Clapshaw & Cleave

THE SPORTS GOODS SHOP

3 QUEEN'S ROAD, BRIGHTON. Tel. 25176

F/B Boots 41/--110/- F/B Jerseys 14/6-22/6

F/B Shorts 11/6-21/- F/B Socks 9/--10/6

F/B Scarves 13/6-29/11 F/B Rattles 5/--12/6



TAMPLINS WATNEYS

FINE BEERS

ALBION (i)

(Blue Shirts, White Shorts)

- 1 Tony BURNS
- 2 Stewart HENDERSON
- 3 ~~Mike EVERITT~~ GALL
- 4 John TEMPLEMAN
- 5 John NAPIER
- 6 Dave TURNER
- 7 Howard WILKINSON
- 8 Nobby LAWTON
- 9 Kit NAPIER
- 10 Charlie LIVESEY
- 11 Paul FLOOD
- 12 ~~To be announced~~ SMITH

Referee: R. C. CHALLIS,
Tonbridge



LUTON T. (i)

(White Shirts, Black Shorts)

- 1 Tony READ
- 2 Max DOUGAN
- 3 ~~Freddy JARDINE~~ McDERMENT
- 4 Keith ALLEN
- 5 ~~Terry BRANSTON~~ SLOUGH
- 6 ~~Allan SLOUGH~~ MOORE
- 7 ~~Graham FRENCH~~ RYAN
- 8 Brian LEWIS
- 9 Laurie SHEFFIELD
- 10 Bruce RIOCH
- 11 ~~Mike HARRISON~~ FRENCH
- 12 ~~John MOORE~~ BUXTON

15,200

Linesmen: K. A. DUFFY, West
Molesey (Red Flag)

K. D. FRANKLIN,
Kenton (Yellow Flag)

ENDEAVOUR



DISTRIBUTORS

Passenger car and van
24 hour repairs
at no extra cost

PRESTON RD., BRIGHTON
Tel. 506331

Commercial
24 hour repairs
KINGSWAY, HOVE

Tel. 48231

Service and
new and used cars

UPPER SHOREHAM ROAD
Shoreham Tel. 4972

NEXT MATCH AT THE GOLDSTONE

- Saturday, 7th September—Kick-off 3 p.m.

Football League

ALBION

v.

ROTHERHAM U.

Best wishes

FROM LOCAL SPORTSMAN GEORGE GUNN

Kick-off to a good start

for a stay in Brighton or for Party Catering
book up at the

SALISBURY HOTEL

on the sea front

Telephone BRIGHTON 739642



Albion's game against Torquay last Saturday was a tense struggle. The picture shows John Templeman's fine effort scoring Albion's goal
Photo by Brighton Herald Ltd.

SOUTHDOWN

PRIVATE HIRE



Our Private Hire Department with its long experience in party coach travel is at your service. We will be pleased to take care of the travel arrangements for your next outing

SOUTHDOWN MOTOR SERVICES LTD

Steine Street, Brighton, BN2 1UG. Phone 66600

Meet Luton Town

KEITH ALLEN (Centre Forward). Originally he began at inside right, but spent the bulk of last season in the middle; in the pre-season practice matches, he has been playing at right-half, where he turned in some superlative performances in emergency during last season. Was signed from Stockport County in exchange for Derek Keaven and had previous spells with Portsmouth and Grimsby Town.

TERRY BRANSTON (Centre Half). For him last season was a personal triumph because, not only was he a member of a promotion team for the fourth time during his career, but he fulfilled his ambition of making the full quota of League appearances. Born at Rugby, where he still lives, Branston spent nine seasons with Northampton Town, accompanying them in their rise from Division IV to Division I.

MAX DOUGAN (Right Back). First signing made by Allan Brown shortly after he rejoined the Club. A fee of about £7,000 changed hands when this ex-Scottish amateur International left Leicester City, his caps having been earned with Queen's Park.

GRAHAM FRENCH (Outside Right). Born at Wolverhampton. Has previously played for Shrewsbury, Swindon, Watford and Wellington before joining Luton in October 1965. Has several Youth International Caps for England.

MIKE HARRISON (Outside Left). Favourable reports submitted on this player, then with Plymouth Argyle, induced the Town Manager to make a £7,000 offer to his former Luton right wing partner, Billy Bingham, now in charge at Home Park. Born at Ilford, Harrison began his first-class career with Chelsea, from which club he moved on to Blackburn Rovers where he established a first-team place.

FREDDIE JARDINE (Left Back). He is now beginning his eighth season, having come to Kenilworth Road as an outside left when Sam Bartram was in charge. He was given a free transfer by Dundee and it was after showing his paces in practice matches that he was

finally converted into a highly useful defender.

BRIAN LEWIS (Right Half). It is by no means clear where the Town's most expensive signing for years—from Coventry City—will finally play. In the temporary absence of Ian Buxton, Lewis is destined to start at inside right where he had considerable experience at Portsmouth and Coventry. However, most of his 20 First Division games last season were in the half-back line.

JOHN MOORE (Left Half). In the opinion of many people was the most improved player on the books and he fell naturally into the task of being a member of the back four. Is beginning his fourth season with the Town who stepped in immediately when they heard that Motherwell had given him a free transfer.

TONY READ (Goalkeeper). There was a time when it looked possible as if he would make a name for himself in the forward line. Probably holds the distinction of being the only goalkeeper to have scored a hat-trick in League football. Was born at Haydock and began his career with Sheffield Wednesday before moving to Peterborough United. Joined Luton 3½ years ago.

BRUCE RIOCH (Inside Left). Without doubt the Town's biggest asset as a player—he will be 21 this month. Is a natural footballer whose skill developed quickly last season, when he was easily the Club's leading scorer even though he was used as the midfield link. Was born in Aldershot, but spent most of his schooldays in Luton and has been with the Town since he was 15.

ALAN SLOUGH (Right Half). Is a true local product because he was amateur and apprentice with the Town before signing as a full-time player. In his early days he was a full back and could conceivably be required for this position, but plays extremely well in either wing half berth.

Laurie Sheffield (Centre Forward). One of the Town's big close season signings from Oldham Athletic. Born in Swansea has previously been with five League clubs.

SUPPORTERS CLUB NOTES

Last season the Supporters' Club had more than 1,200 members, an increase of approximately two hundred members over the previous season. This year, Mr. M. Leaney, the Membership Secretary, and his Committee hope to increase the total membership to more than 1,500.

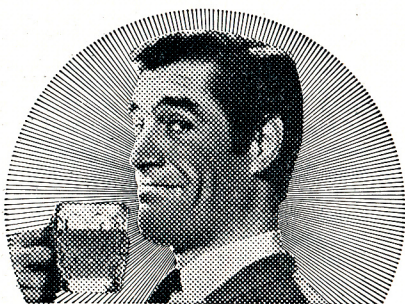
The aim of the Supporters' Club is to assist the parent club in its endeavours to provide a high standard of football for its followers. By joining the Club you are helping us to achieve this aim. Once a member, you will receive a copy of the Supporters' Club Magazine, the "Goldstone Roar", five times a season; you will be insured when on the ground as a spectator and when travelling with the Club, and you will be entitled to travel with us on the excursions which are arranged to most away matches. If you wish to become a member, just complete the enrol-

ment form printed in this programme and return it, with your subscription, to the Membership Secretary.

Excursions are being organised for Albion's next two away games at Gillingham and Orient. Bookings for either of these games may be made at the huts on the ground, tonight or Saturday, or at 8 St. Georges Place during the week. A deposit of 10/- must be included with each booking.

Programme collectors, please note! Programmes of last Saturday's game at Barrow are on sale this evening at the huts on the ground. Also available at the huts are copies of the 1968-69 season Handbook. The new Handbook includes articles by Jack Arlidge, John Vinicombe, Frankie Howard and others, and is well worth the cost of 1/-. Be sure to get your copy.

Taste the sun go down



BRICKWOODS BEERS

HALF-TIME SCOREBOARD

(Depending on times of kick-off)

A—Arsenal v. Sunderland.....	
B—Aston V. v. Tottenham.....	
C—Blackburn v. Stoke.....	
D—Bristol C. v. Middlesborough.....	
E—Carlisle U. v. Cardiff C.....	
F—Colchester U. v. Workington.....	
G—Crystal Palace v. Preston.....	
H—Darlington v. Leicester.....	
J—Derby v. Stockport.....	
K—Grimsby v. Burnley.....	
L—Leeds v. Charlton.....	
N—Liverpool v. Sheffield U.....	
P—Southampton v. Crewe.....	
R—West Ham v. Bolton.....	
S—Wolves v. Southend.....	
T—Wrexham v. Blackpool.....	

NOTE: In the event of a draw only one figure will be shown on the indicator. Thus: A0—No Score; A1—One All Draw; A2—Two All Draw, etc., etc.

ALBION SPORTSMEN'S ASSOCIATION

★ BRIGHTON'S TOP 1/- PER WEEK COMPETITION!

£700 in Cash Prizes each week

BE AN AGENT....

Boost Club Funds. Win Prizes.

THE TARGET....

Sell 20 tickets or more each week and you automatically become an agent.

INTERESTED?....

Then complete the Form Below.

To: Eric Jennings, Albion Sportsmen's Association,
Goldstone Ground, Hove BN3 7DE

I WISH TO BECOME AN ALBION SPORTSMEN'S ASSCN. AGENT

Name

Address

AND HERE'S A NEW COMPETITION....

The Albion Sportsmen's Association invites you to choose the best post-war Albion side from a list of 55 players, excluding, of course, the members of the current Albion playing staff.

Remember some of the names? Harry Baldwin, Mel Hopkins, Jim Langley, Johnny McNichol—to mention just some of the stalwarts of the past.

The Sportsmen's Association have a printed list and all you have to do is tick the players from the 55 suggested, who you consider would make the ideal XI.

The Prizes? The 1st Prize will be a cash sum of £25. The 2nd Prize—20 gallons of Jet Petrol. The 3rd Prize—one month's dry-cleaning, to the value of £5.

A team of adjudicators will make their selection which will be deposited in a local bank. Then, when the competition closes on December 14th, 1968, the first correct entry scrutinised on December 16th wins the £25. Enter now—forms are obtainable at the entrances.

LAST WEDNESDAY'S JACKPOT WINNERS

1. £49 0 0	Pink	63139	Mr. Leeves, Headson Rd., Maidstone
2. £24 10 0	Pink	68566	Mr. Dimicci, Hollingbury Rd., Btn.
3. £14 14 0	Blue	18274	Mr. Coles, Elm Grove, Brighton
4. £ 9 16 0	Pink	68571	Mr. Boniface, Highcroft Villas, Btn.

Radio Goldstone discs by courtesy of

SOUND CITY

On the air every night of the week
at the King Alfred, Hove

CALLING ALL SPORTS FANS . . .

BRIGHTON RACES—Wednesday 18th September. First Race 2.00 p.m.

COUNTY CRICKET—at the County Ground, Eaton Road, Hove. Sussex v. Warwickshire, Wed., Thurs. & Fri., 4th, 5th & 6th. Play from 11.30 daily.

GREYHOUND RACING—at Nevill Road, Hove, every Tuesday, Thursday and Saturday at 7.30 p.m.

PLUMPTON RACES—Plumpton, near Lewes, on Tuesday, 24th September at 2 p.m. 13 miles from Brighton by bus or train.

BRIGHTON AND NATIONAL SPEED TRIALS—Madeira Drive, Saturday, 14th September. First Trials commence at 9.15 a.m.

issued by Brighton & Hove Sports Advertising Committee

Full colour brochures, leaflets, booklets, travel brochures, periodicals, accounting machine systems and commercial stationery of all kinds are but a few of the many types of quality productions we regularly print.



For a personal service contact

ALDRINGTON PRESS LIMITED

61/5 NORTH STREET, PORTSLADE, SUSSEX

Telephone: Brighton 48341

GOLDSTONE GOSSIP

No fewer than seven Albion players have birthdays in September. George Dalton's is today, September 4th, he's 27, so Happy Birthday George! It's very pleasant to see you going around without sticks these days. Here's to seeing you back in action again . . .

On Saturday, September 7th, Dave Turner celebrates his birthday, his 25th, so we'll be passing on the traditional greetings on that day. We'll keep you informed about the other September birthdays.

* * *

A reminder that you can get your F.A. Diary, a most useful publication, from the Football Association, 22 Lancaster Gate, London, W.2, enclosing remittance for 5/6.

* * *

Tough luck on Roger Badminton, who had to be admitted to the Hove General Hospital on Monday for an operation, the removal of his appendix. The operation was successful and Roger is comfortable. It's time his luck changed, for he's working hard to get fit after his knee operation.

* * *

Albion have entered a team in Radio Brighton's "Top Team Quiz", selected from Brian Tawse, Howard Wilkinson, Bobby Smith and Jim Magill, with Nobby

Lawton and Roger Badminton standing by as substitutes. This successful quiz programme is returning to the air in the Autumn, and will be on the air each week. Teams consist of three players who will deal with eight sets of questions, including sport and general knowledge. We're hoping to see Albion do well . . .

* * *

It was interesting to see two players who have won F.A. Cup winners medals sitting in the front row of the visiting directors' box in our match against Torquay. They were Ken Brown and John Bond, members of the West Ham side to meet Nobby Lawton's team, Preston North End, in 1964. Both are on Torquay's injured list.

* * *

Tommy Docherty will be here on Saturday, with Rotherham United. The last time we saw enthusiastic Tommy at the Goldstone was when Albion held Chelsea to a draw in the F.A. Cup tie which packed the ground two seasons back. He remains one of the soccer characters of the day.

* * *

If a replay is necessary after tonight's match, it will take place at Kenilworth Road next Wednesday, September 11—kick-off 7.30 p.m.

BRIGHTON & HOVE ALBION SUPPORTERS CLUB

ENROLMENT FORM

MEMBERSHIP No.

..... Please enrol*/re-enrol*me as a member of the above club for the season 1968/69.

Name(Mr., Mrs., Miss, Master*)
(BLOCK LETTERS, PLEASE)

Address

I enclose my Subscription for..... Date of birth under age of 15

*Minimum Subscription: Adults, 2s. 6d.;

*Junior up to 15 years, 1s. 6d.

(*) Delete where not applicable.

Please return Form to: Mr. M. Leaney, Membership Secretary, Club Office, 8 St. George's Place, BRIGHTON

Members wishing Magazine to be posted please enclose 2s. 6d. postage for 5 issues. If postage NOT included Magazine can be collected at Club Office or Huts.

ALBION SPOTLIGHT ● Tony Burns

Tony is a keen cricket fan, having played for teams in Kent, and for Portslade last season. He visits the Hove County Ground whenever possible. He's a useful fast bowler.

But the popular Kentish man is keen on all sport, as well as liking Frank Sinatra records. And Tony is fond of the cinema, having a wide range of interests concerning films.

He's in digs with Roger Badminton, and if you ask him for an outstanding memory in soccer he'll recall touring South Africa with Arsenal, his previous club. They played before a big crowd in Johannesburg, on the famous Wanderers ground, and he also visited Israel, Germany and several other countries with the Gunners.

Albion's goalkeeper is a bachelor and smiles when he says there is no threat of wedding bells at the moment. But we happen to know he has a considerable fan following, with attractive young ladies very much in the majority!



STATISTICS: Born Edenbridge, Kent, age 24; Height 5ft. 11½in., weight 12½st. Tony's a bachelor, joined Albion from Arsenal on July 22nd, 1966, having been at Highbury for three years. Had a spell with Tonbridge as an amateur.



The above picture shows the Albion forwards attacking the Torquay goal in one of the most exciting moments

Photo by Brighton Herald Ltd.

SOUTH EAST COUNTIES HOME FIXTURES etc.

Date	Opponents	Result	Scorer	Gate
1968				
Sat. Aug. 17	Colchester United ... (h)	3—1	Hygate, Searle, 1 o.g.	437
Sat. „ 31	Fulham ... (h)	0—1	—	688
Sat. Sept. 14	Ipswich (Cup 1) ... (h)			
Sat. „ 28	Millwall ... (h)			
Sat. Oct. 5	Watford ... (h)			
Sat. „ 12	Div. 1 League Cup 2			
Sat. „ 19	Charlton Athletic ... (h)			
Sat. Nov. 2	Crystal Palace ... (h)			
Sat. „ 30	Tottenham H. ... (h)			
Sat. Dec. 14	Reading ... (h)			
Sat. „ 21	West Ham United ... (h)			
Sat. „ 28	Queens Park R. ... (h)			
1969				
Sat. Jan. 4	Oxford United ... (h)			
Sat. „ 18	Chelsea ... (h)			
Sat. Feb. 8	Luton Town ... (h)			
Sat. Mar. 1	Gillingham ... (h)			
Sat. April 12	Ipswich Town ... (h)			

NEW IMPERIAL HOTEL

The home of Football League Teams when they visit Brighton

80 Bedrooms, many with Private Bath, at reasonable prices

Ideal venue for your
SOCIAL MEETING

BANQUET

WEDDING RECEPTION

SOCIETY DINNER

FULLY LICENSED : ORCHESTRA

Suites available for numbers up to 150

Please phone Brighton 731121

FIRST AVENUE
HOVE BN3/2GU

CUP FINAL DRAW VOUCHER

LUTON T.
4th SEPT. 1968

APPEARANCES AND SCORERS 1968-9

	APPEARANCES			GOALS		
	League	League Cup	F.A. Cup	League	League Cup	F.A. Cup
BURNS, Tony	...	5	1	—	—	—
HENDERSON, Stewart	...	5	1	—	—	—
EVERITT, Mike	...	4	1	1	—
GALL, Norman	...	2 (3)	—	—	—
SMITH, Bobby	...	1 (1)	— (1)	—	—
TEMPLEMAN, John	...	5	1	2	1
NAPIER, John	...	5	1	1	—
TURNER, Dave	...	5	1	—	—
WILKINSON, Howard	...	5	1	1	—
LIVSEY, Charlie	...	4	1	3	—
NAPIER, Kit	...	5	1	1	1
LAWTON, Nobby	...	4	1	1	—
TAWSE, Brian	...	1 (1)	—	—	—
FLOOD, Paul	...	4	1	2	—

Note: Substitute appearances in brackets

DIVISION 3—Up to and including Sat., Aug. 31 SOUTH EAST COUNTIES FOOTBALL LEAGUE

	Up to and including August 31											
	P	W	D	L	F	A	W	D	L	F	A	Pts
Luton	5	3	0	0	12	2	1	1	0	3	1	9
Mansfield	5	2	1	0	6	3	1	0	1	2	2	7
Swindon	4	2	1	0	4	0	0	1	0	0	0	6
Reading	5	2	0	0	8	0	0	2	1	3	5	6
Brighton	5	1	1	1	8	3	1	1	0	4	3	6
Rotherham	5	2	1	0	5	1	0	1	1	4	6	6
Crewe	5	2	0	0	7	1	0	2	1	3	7	6
Barrow	5	0	2	0	1	1	2	0	1	5	5	6
Bournemouth	5	2	0	1	6	1	0	1	1	3	4	5
Torquay	5	2	0	0	6	1	0	1	2	3	6	5
Orient	4	1	1	0	4	3	0	2	0	4	4	5
Plymouth	4	1	1	0	5	3	1	0	1	1	3	5
Stockport	5	0	2	0	4	4	1	1	1	2	2	5
Tranmere	4	2	0	0	3	0	0	1	1	2	5	5
Walsall	5	0	1	1	2	3	1	2	0	3	2	5
Watford	4	1	1	1	2	1	0	1	0	1	1	4
Bristol R.	5	1	1	1	5	5	0	1	1	3	8	4
Northampton	3	0	1	0	1	1	1	0	1	1	1	3
Shrewsbury	5	0	1	1	1	2	1	0	1	2	5	3
Gillingham	5	0	1	1	3	5	1	0	2	1	3	3
Oldham	5	1	1	1	4	3	0	0	2	0	10	3
Barnsley	5	0	0	2	2	4	0	2	1	2	6	2
Hartlepool	4	0	2	0	1	1	0	0	2	0	8	2
Southport	5	0	1	1	4	5	0	0	3	1	7	1

Up to and including August 31

	P	W	D	L	F	A	Pts
Orient	3	3	0	0	13	2	6
Millwall	3	3	0	0	14	3	6
Ipswich Town	3	3	0	0	17	4	6
Charlton A.	4	3	0	1	11	5	6
Tottenham	3	2	0	1	10	1	4
Q.P.R.	3	2	0	1	5	3	4
Chelsea	3	2	0	1	8	6	4
West Ham	4	1	2	1	4	3	4
Crystal Palace	4	2	0	2	15	15	4
Brighton	3	1	0	2	4	7	2
Colchester	3	1	0	2	4	7	2
Watford	3	1	0	2	4	14	2
Fulham	3	1	0	2	1	5	2
Reading	4	0	2	2	2	18	2
Luton Town	3	0	0	3	7	14	0
Gillingham	2	0	0	2	1	5	0
Oxford United	3	0	0	3	1	9	0

First Team Fixtures, Results, Scorers, etc.

Date	Opponents	Result	Scorer	Gate
1968				
Mon. Aug. 5	Coventry C. (Fr.)	... (h) 1—2	Templeman	5,608
Sat. " 10	Mansfield Town	... (h) 1—2	Napier, J.	9,647
Wed. " 14	Oxford F.L. Cup (1)	(h) 2—0	Templeman, Napier, K.	7,304
Sat. " 17	Southport	... (a) 3—2	Lawton, Livesey 2	3,794
Sat. " 24	Oldham Athletic	... (h) 6—0	Flood, Henderson, Livesey, Wilkinson, Napier, K., Templeman	8,336
Wed. " 28	Torquay United	... (h) 1—1	Templeman	14,821
Sat. " 31	Barrow	... (a) 1—1	Flood	5,729
Wed. Sept. 4	Luton F.L. Cup (2)	... (h)		
Sat. " 7	Rotherham United	... (h)		
Sat. " 14	Gillingham	... (a)		
Mon. " 16	Orient	... (a)		
Sat. " 21	Luton Town	... (h)		
Sat. " 28	Barnsley	... (a)		
Sat. Oct. 5	Bournemouth	... (a)		
Wed. " 9	Torquay United	... (a)		
Sat. " 12	Swindon Town	... (h)		
Fri. " 18	Reading	... (a)		
Sat. " 26	Watford	... (h)		
Fri. Nov. 1	Stockport County	... (a)		
Wed. " 6	Crewe Alexandra	... (a)		
Sat. " 9	Bristol Rovers	... (h)		
Sat. " 16	F.A. Cup—1st Round			
Sat. " 23	Northampton T.	... (h)		
Sat. " 30	Walsall	... (a)		
Sat. Dec. 7	F.A. Cup—2nd Round			
Sat. " 14	Swindon Town	... (a)		
Fri. " 20	Reading	... (h)		
Thurs. " 26	Bournemouth	... (h)		
Sat. " 28	Watford	... (a)		
1969				
Sat. Jan. 4	Plymouth Argyle	... (a)		
Sat. " 11	Stockport County	... (h)		
Sat. " 18	Bristol Rovers	... (a)		
Sat. " 25	Crewe Alexandra	... (h)		
Sat. Feb. 1	Shrewsbury Town	... (h)		
Sat. " 8	Northampton T.	... (a)		
Sat. " 15	Walsall	... (h)		
Sat. " 22	Hartlepool United	... (a)		
Sat. Mar. 1	Mansfield Town	... (a)		
Wed. " 5	Plymouth Argyle	... (h)		
Sat. " 8	Southport	... (h)		
Wed. " 12	Shrewsbury Town	... (a)		
Sat. " 15	Oldham Athletic	... (a)		
Wed. " 19	Hartlepool United	... (h)		
Sat. " 22	Barrow	... (h)		
Sat. " 29	Rotherham United	... (a)		
Fri. April 4	Orient	... (h)		
Sat. " 5	Barnsley	... (h)		
Sat. " 12	Luton Town	... (a)		
Wed. " 16	Tranmere Rovers	... (h)		
Sat. " 19	Gillingham	... (h)		

These fixtures are the copyright of The Football League Limited, and are printed by their permission under Licence No. 52. They must not be reproduced in whole or part without permission from The Football League Limited.

Make £250 your Goal
enter the
EVENING ARGUS
LOST BALL CONTEST

Entry form appears EVERY SATURDAY

Go

GREYHOUND RACING

TUESDAY, THURSDAY

and SATURDAY

7.30

BARS

BUFFETS

RESTAURANT

COCKTAIL LOUNGE

ALL-WEATHER COMFORT

**15
DIRECT
BUS &
COACH
SERVICES**

**5
MINUTES
WALK
FROM
THIS GROUND**

**CAR PARK
ALSO OPEN FOR
ALBION MATCHES**

Last Thursday meet-
ing of the Season
19th September

See It In Style at
**BRIGHTON &
HOVE STADIUM**

**NEVILL
ROAD
TELEPHONE
731028**