

# EVERTON Football Club

GOODISON PARK · LIVERPOOL



FOOTBALL LEAGUE CUP—3rd ROUND

## EVERTON v. LUTON TOWN

TUESDAY, 24th SEPTEMBER, 1968

Kick-off 7.30 p.m.

Price 9<sup>D</sup>

OFFICIAL PROGRAMME

*All sportsmen applaud a good winner...*

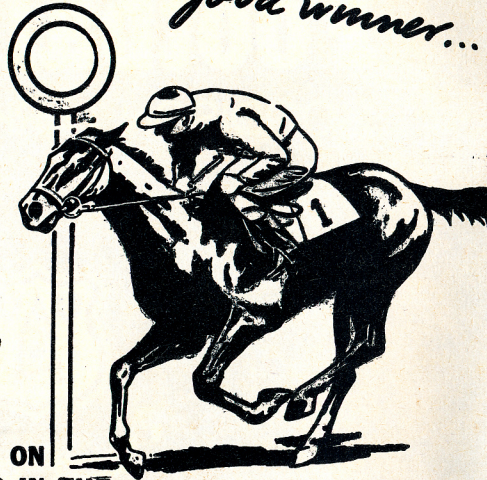
you get one every racing day in the

## SPORTING CHRONICLE

THE RECOGNISED AUTHORITY ON ALL RACING MATTERS

It's knowledgeable, informative and an indispensable guide to all Turf topics.

ALL YOU NEED TO WIN ON POOLS AND FIXED ODDS IN THE WEDNESDAY FOOTBALL SPECIAL



## Everton Football Club Co. Ltd.

(Founded 1878)

Chairman: J. C. SHARP

Directors:

N. W. COFFEY

C. E. BALMFORTH

JOHN MOORES

G. A. WATTS

J. P. HACKING

T. H. W. SCOTT

Manager: H. CATTERICK

Secretary: W. DICKINSON

## EVERTONIA

There are indications that our Cup draw luck has changed for the better. Although we got to Wembley in the F.A. Cup last season, we were drawn at home just once to Tranmere Rovers in the fifth round. Yet here we are this evening staging our second successive home tie in The Football League Cup, and once again facing Third Division opposition. It does look as if the pendulum is swinging our way at last. Now it is up to the players to take advantage of the better things which fortune has offered. The current League Cup competition has produced quite a few instances of "giant killers" so that nothing, not even a home tie against opposition from a lower strata, can be regarded as a certainty. The League Cup exposed to us last season that even a two goal lead is no guarantee to progress. We held that after only four minutes against Sunderland here, but lost. We bring up that sad and singular instance just as a gentle warning against complacency, while taking consolation from the fact that although Everton is a young team it is well equipped in big match "lore", and so should be able to guard against folly.

### NOT WELCOME

In recent seasons our supporters and, in general, the Goodison habitues, have been most considerate in their conduct and attitude towards players both friend and foe. There has been less toilet-roll throwing than on most grounds. We are sorry to have to draw attention to the fact that the roll menace has reared its ugly head here again. Not in a big way by any means, but still not welcome. In the local "Derby" game there were isolated rolls, but for the Nottingham Forest match there were several thrown at the Gwladys Street end. We appreciate that most of the Forest supporters were congregated at that end, but what on earth had any Forest supporter to celebrate apart from the goal skill of Williamson? These rolls are invariably thrown as signs of greeting before a match or to show jubilation at the scoring of a goal. At the Forest game there was no throwing before play began, and it all happened before Chapman scored for Forest and at the end where John Hurst and Joe Royle got our goals. We make no accusations, but mention this as an appeal to all to let those rolls remain where they can be useful, and please don't throw them under any circumstances.

### NATIONAL CONCERN

We are living in an age of violence, and there is National concern over the growing misbehaviour before and after matches as well as on the terraces. Glasgow Celtic devised the scheme of staging a boys' game after their game against Rangers

# SHOES . . .

too comfortable to take off

**JOHN  
WHITE**

'Rogues'  
'Cads'  
and 'Juniors'

you can buy them at

**FREEMANS**  
OF WAVERTREE ROAD

also at our COUNTY ROAD STORE

just to keep the spectators in the ground and prevent violent clashes outside. At least it did some good. The Directors of all clubs are taking every possible step to put an end to unruliness. On Merseyside, thank goodness, we have a system of police control to reduce outbreaks and disturbance to a minimum. What is more we have the men in blue with the know-how of dealing with mob hooliganism. Our Directors will readily fall in with any scheme which can cut out the violence, the bawdy songs, and bad language so that no parent need ever worry about a child visiting Goodison or a husband worry about taking his wife to a match.

The wanton destruction of trains by soccer excursionists does lay the seeds for unruliness at home games. We can hear quite a few saying this evening "Why pick on us, the best behaved spectators in the land?" The answer is simple. Better a word of warning and wise counsel before the event rather than a censure afterwards. No band of supporters have a right to regard themselves as above reproach, for never forget that the supporters of every Club in Britain rate themselves the best behaved. We are very proud of our supporters, and bring up this not exactly happy topic because we do not think that the Evertonians are "untouchables", and because we want to play what part we can in stopping all this ridiculous action which is giving the greatest game in the world such an unsavoury reputation. If, by our reference, we have stopped the throwing of one toilet roll, the blaring of one risque song or the utterance of one swear word we shall have done something worthwhile. Evertonia has never missed a single chance of praising the folk in our stands and on our terraces so we cannot be accused of being unfair to the majority of orderly supporters by treating this in a general way. We have been accused of over-praising, but our reply to that is that we have had so much to praise. Let's keep it that way.

"The Third Division side with the Second Division Look" is the latest description applied to this evening's opposition Luton Town who came into the First Division in 1955-56 to stay until 1959-60 when they were relegated with Leeds United. The slide continued for at the end of 1962-63 "The Hatters" dropped into the Third Division, and two years later were right down in the Fourth Division. There they remained until last season when they won the Championship by five points from Barnsley. This revival was due in many ways to the wise management of Mr. Allan Brown the former Scotland inside-forward who missed two Cup medals because of injury when he starred with Blackpool—a loser's and a winner's. The Town team has been constructed without recourse to heavy spending, but it is shaping exceptionally well as the Club returns for Cup duty to a ground on which their last Cup visit brought disaster—a 6-0 defeat in 1933 when we were on our way to a Wembley triumph in the F.A. Cup. In this season's League Cup, Luton Town defeated Watford 3-0 with Harrison (2) and Lewis the scorers. Then Sheffield's goal brought them a draw at Brighton & Hove Albion who were beaten in the replay 4-2 the goals coming from Slough (2), Sheffield and Rioch. Here is a rundown on some of the Luton players you may be watching:

**TONY READ (Goalkeeper).** Born not far from us (at Haydock) Tony is one goalkeeper who claims a hat-trick of goals! He was once a forward. Signed three-and-a-half years ago from Peterborough United who got him from Sheffield Wednesday.

**MAX DOUGAN (Full-back).** Gained Scottish amateur international honours when with Queens Park. Brought to England by Leicester City, and was one of Mr. Brown's first signings last year.

**FREDDIE JARDINE (Full-back).** A former outside-left, Jardine has been with Town for eight years having been signed on a free transfer from Dundee by Sam Bartram.

**KEITH ALLEN (Forward).** Born in the Isle of Wight, Keith was with Portsmouth and Grimsby Town before joining Stockport County, changing to Luton in exchange for Derek Kevan.

**ALAN SLOUGH (Half-back).** A local who joined Town as an amateur, and then served an apprenticeship to sign full-time in May 1965.

**TERRY BRANSTON (Centre-half).** Has played in all four Divisions of the League having helped to take Northampton Town from the Fourth to the First. Born in Rugby where he still lives.

**JOHN MOORE (Wing-half).** John, who recently became a married man, is in his fourth season at Kenilworth Road having been signed on a free transfer from Motherwell.

**GRAHAM FRENCH (Outside-right).** A Wolverhampton lad who was with Shrewsbury, Swindon, Watford and Wellington before joining Luton in October, 1965. An England Youth cap.

**BRIAN LEWIS (Half-back or Forward).** Town's most expensive signing, Lewis who began with Portsmouth, was secured from Coventry City this season.

**LAURIE SHEFFIELD (Centre-forward).** Formerly with Rotherham and Norwich City, Laurie was signed by Luton from Oldham Athletic in the close season.

**BRUCE RIOCH (Inside-left).** One of the most sought lads in the Third Division the 5 ft. 11 ins. Bruce was born in Aldershot, but went to Luton as an infant joining Town from School at fifteen. A natural goalscorer (twenty-four last season) Rioch was twenty-one on September 6th.

**MIKE HARRISON (Outside-left).** Experienced danger man who was with Chelsea, but came North to Blackburn Rovers. Then joined Plymouth Argyle but switched to Luton in the close season. Born at Ilford.

---

**SUPPORT YOUR TEAM THROUGH YOUR SUPPORTERS CLUB**

---

**EVERTON SUPPORTERS CLUB**

HAVE YOU JOINED YET? Membership Application Forms may be obtained before and after every match from the clubrooms 38-50 City Road, Liverpool 4 (approx 100 yds. from Goodison Park).

**LUTON TOWN SUPPORTERS ESPECIALLY WELCOME THIS EVENING**

---

**SUPPORT YOUR TEAM THROUGH YOUR SUPPORTERS CLUB**

---

**NEXT MATCH HERE:**

FOOTBALL LEAGUE

**EVERTON v.  
WEST BROMWICH ALBION**

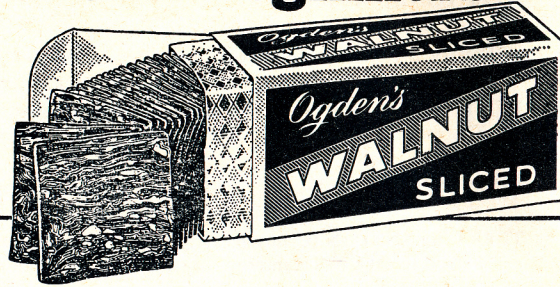
SATURDAY, 28th SEPTEMBER, 1968

Kick-off 3 p.m.

Reserved Stand Tickets available at 10/- and 9/- from Everton F.C. Goodison Park Liverpool 4. Stamped addressed envelope with all postal applications please.

---

**Definitely not for beginners...**



**are you ready yet for  
Ogden's Walnut Sliced?**

**6/5½d the ounce**

**TEAMS**

**EVERTON(5)**  
*(Blue Jerseys)*

30,405

**LUTON TOWN(1)**  
*(White Jerseys)*

Referee:

Mr. J. K. Taylor  
(Wolverhampton)



Linesmen:

Mr. M. D. Nixon  
(Yellow Flag)

Mr. R. Swallow  
(Red Flag)

- (1) WEST
- (2) WRIGHT
- (3) BROWN
- (4) KENDALL
- (5) LABONE
- (6) HARVEY
- (7) **HUSBAND**
- (8) **BALL**
- (9) **ROYLE** 2 (1 PEN)
- (10) HURST
- (11) **MORRISSEY**

Substitute:

- (12) KENYON

- (1) READ
- (2) DOUGAN
- (3) JARDINE
- (4) SLOUGH
- (5) BRANSTON
- (6) **MOORE** McDERMENT
- (7) FRENCH
- (8) LEWIS
- (9) **SHEFFIELD**
- (10) **RIOCH** BUXTON
- (11) HARRISON

Substitute:

- (12) RYAN

**BET & WIN**

WITH THE

**GREYHOUND  
EXPRESS**

THE CHAMPION RACING PAPER

WITH THE

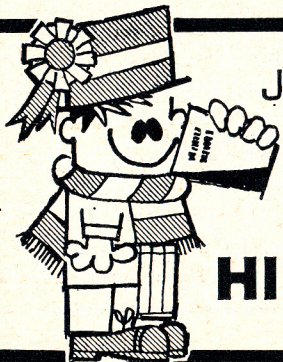
**LARGEST SALE  
TO THE BETTING PUBLIC**

**1/- DAILY—AND WORTH IT!**


**DER**

*Leads  
with  
television  
rental*

**Telephone: ROYal 9105**



JOIN THE FANS AT THE BAR

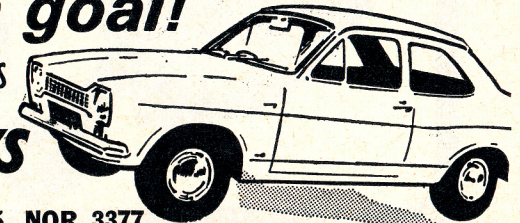
**HIGSONS**  **KICK OFF WITH  
Pale Ale**

**What a goal!**

...YOUR OWN FORD ESCORT ON EASY TERMS

FROM  **WHITNEYS**

279 SCOTLAND RD. L'POOL 5. NOR 3377  
and VALE RD. RHYL. RHYL 4436 & 3445



# SELF DRIVE HIRE

200 CARS ALWAYS AVAILABLE

From only 8 guineas weekly at .....

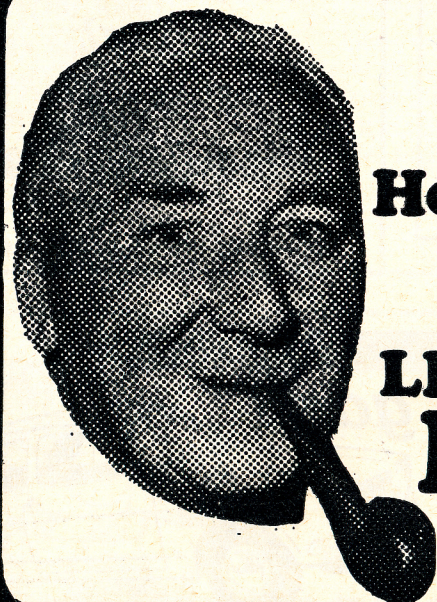
**HIRE CARS**

99 RENSHAW STREET, LIVERPOOL

Telephone ROYal 2036 or ROYal 9988

Branches at

WIGAN · BOLTON · BLACKBURN · BLACKPOOL · I.O.M.



**READ**  
**Horace Yates**  
**every day**  
**in the**  
**LIVERPOOL**  
**DAILY**  
**POST**

## EVERTON TEAM APPEARANCES AND GOALSCORERS

	Football League App.	Goals	Cup and Other Goals	Central League App.	Goals
West ... ..	9	—	—	—	—
Wright ... ..	9	—	—	—	—
Brown ... ..	8	—	—	—	—
Kendall ... ..	9	—	—	—	—
Labone ... ..	9	—	—	—	—
Harvey ... ..	9	1	—	—	—
Husband ... ..	7	3	—	—	—
Ball ... ..	9	3	1	—	—
Royle ... ..	9	4	1	—	—
Hurst ... ..	9	1	—	—	—
Morrissey ... ..	8	1	—	—	—
Jackson ... ..	1	—	—	6	1
Darcy ... ..	1	—	—	3	—
Humphreys ... ..	1	1	—	6	1
Whittle ... ..	1	—	2	7	2
Barnett ... ..	—	—	—	5	—
Turner ... ..	—	—	—	4	—
Darracott ... ..	—	—	—	6	1
Dunleavy ... ..	—	—	—	3	—
Bennett ... ..	—	—	—	8	—
Kenny ... ..	—	—	—	4	1
Owen ... ..	—	—	—	8	2
Maher ... ..	—	—	—	8	1
Hughes ... ..	—	—	—	4	—
Kenyon ... ..	—	—	—	5	—
Young, A. ... ..	—	—	—	1	—
Scott ... ..	—	—	—	2	—
Styles ... ..	—	—	—	3	—
Brindle ... ..	—	—	—	2	—
Rankin ... ..	—	—	—	3	—
Seargeant ... ..	—	—	—	—	—
Johnson ... ..	—	—	—	—	—

# Thirst division champions



## THRELFALLS

A WHITBREAD GROUP COMPANY

### LEAGUE TABLES

#### LEAGUE—DIVISION I

(Up to and including Saturday, 14.9.68)

	P.	W.	D.	L.	F.	A.	Pts
Arsenal.....	9	7	2	0	17	6	16
Leeds U. ....	8	6	2	0	17	7	14
Chelsea.....	9	5	3	1	19	8	13
West Ham U. ....	9	5	3	1	19	9	13
Liverpool .....	9	5	2	2	13	7	12
<b>EVERTON</b> .....	<b>9</b>	<b>4</b>	<b>3</b>	<b>2</b>	<b>14</b>	<b>7</b>	<b>11</b>
Sheffield W. ....	9	4	3	2	13	11	11
Sunderland .....	9	3	4	2	13	11	10
Manchester U. ....	9	3	2	4	12	16	8
West Brom. A. ....	9	3	2	4	15	22	8
Burnley .....	9	3	2	4	10	22	8
Tottenham .....	8	2	3	3	17	12	7
Nottingham F. ....	8	1	5	2	10	9	7
Newcastle U. ....	9	1	5	3	10	12	7
Southampton .....	9	3	1	5	11	14	7
Stoke C. ....	9	3	1	5	6	11	7
Coventry C. ....	8	2	2	4	8	11	6
Leicester C. ....	9	2	2	5	9	13	6
Manchester C. ....	9	1	4	4	8	15	6
Queens Park R. ....	9	0	3	6	7	22	3

#### CENTRAL LEAGUE

(Up to and including Saturday, 16.9.68)

	P.	W.	D.	L.	F.	A.	Pts
Liverpool .....	9	6	1	2	18	5	13
Manchester U. ....	8	6	1	1	13	6	13
Wolverhampton .....	9	5	3	1	19	11	13
Burnley .....	10	6	1	3	17	13	13
Sheffield W. ....	9	4	3	2	11	9	11
Aston Villa .....	9	4	3	2	9	9	11
West Brom. A. ....	9	4	2	3	16	10	10
Stoke C. ....	8	4	2	2	10	8	10
Sheffield U. ....	9	2	5	2	8	7	9
Huddersfield T. ....	9	4	1	4	12	17	9
Blackpool .....	8	3	2	3	17	11	8
Preston N.E. ....	7	3	2	2	11	8	8
Newcastle U. ....	8	3	2	3	8	10	8
<b>EVERTON</b> .....	<b>8</b>	<b>3</b>	<b>2</b>	<b>3</b>	<b>9</b>	<b>12</b>	<b>8</b>
Bolton W. ....	9	3	2	4	12	18	8
Blackburn R. ....	10	3	1	6	14	16	7
Bury .....	8	3	0	5	11	13	6
Leeds U. ....	8	2	2	4	6	11	6
Derby County .....	8	0	5	3	4	10	5
Nottingham F. ....	7	1	2	4	13	17	4
Coventry C. ....	9	1	2	6	9	16	4
Manchester C. ....	9	2	0	7	10	20	4

### EVERTON FOOTBALL CLUB FIXTURES—SEASON 1968-69

1968		Last Season		This Season		Aggregate Gain or Loss	
		Res.	Attend.	Res.	Attend.	Pts.	Attend.
Aug. 10	Manchester U.....	A	1-3	—	1-2	—	—
13	Burnley .....	H	2-0	54,324	3-0	48,903	5,421-
17	Tottenham H. ....	H	0-1	57,790	0-2	56,570	6,641-
19	West Ham U. ....	A	1-1	—	4-1	—	+1
24	Newcastle U. ....	A	0-1	—	0-0	—	+2
27	Liverpool .....	H	1-0	64,482	0-0	63,938	+1
31	Nottingham F. ....	H	1-0	44,765	2-1	45,951	+1
Sep. 3	Tr'mere R. F.L. Cup	H	—	—	4-0	—	—
7	Chelsea .....	A	1-1	—	1-1	—	+1
14	Sheffield Wed. ....	H	1-0	44,530	3-0	44,517	+1
21	Coventry C. ....	A	2-0	—	—	—	—
24	Luton Town F.L.C. H	—	—	—	—	—	—
28	West Brom A. ....	H	2-1	44,092	—	—	—
Oct. 5	Manchester C. ....	H	1-1	47,144	—	—	—
8	Liverpool .....	A	0-1	—	—	—	—
12	Southampton .....	A	2-3	—	—	—	—
19	Stoke C. ....	H	3-0	43,302	—	—	—
26	Wolverhampton W. A	—	3-1	—	—	—	—
Nov. 2	Sunderland .....	H	3-0	38,216	—	—	—
9	Ipswich T. ....	A	1-0	—	—	—	—
16	Queens Park R (1) H	—	5-1	38,337	—	—	—
23	Leeds U. ....	A	0-2	—	—	—	—
30	Leicester C. ....	H	2-1	39,156	—	—	—
Dec. 7	Arsenal (2) .....	A	2-2	—	—	—	—
14	Southampton .....	A	4-2	47,896	—	—	—
21	Stoke C. ....	A	0-1	—	—	—	—
26	Manchester C. ....	A	0-2	—	—	—	—
28	Wolverhampton W. H	—	4-2	51,498	—	—	—
1969							
Jan. 4	F.A. Cup (3)	—	—	—	—	—	—
11	Sunderland .....	A	0-1	—	—	—	—
18	Ipswich T. ....	H	1-0	37,994	—	—	—
25	F.A. Cup (4)	—	—	—	—	—	—
Feb. 1	Queens Park R. ....	A	1-2	—	—	—	—
8	Leeds U. (5) .....	H	0-1	53,179	—	—	—
15	Leicester C. ....	A	2-0	—	—	—	—
22	Arsenal .....	H	2-0	40,029	—	—	—
Mar. 1	Manchester U. (6) ...	H	3-1	61,452	—	—	—
8	Tottenham H. ....	A	1-1	—	—	—	—
15	Newcastle U. ....	H	1-0	43,519	—	—	—
22	Nottingham F. (S.F.) A	—	0-1	—	—	—	—
29	Chelsea .....	H	2-1	47,370	—	—	—
Apr. 1	West Ham U. ....	H	2-0	46,762	—	—	—
5	West Brom. A. ....	A	6-2	—	—	—	—
8	Burnley .....	A	1-2	—	—	—	—
12	Coventry C. ....	H	3-1	38,804	—	—	—
19	Sheffield W. ....	A	1-0	—	—	—	—
26	F.A. Cup Final	—	—	—	—	—	—

†For points and attendance comparisons substitute Ipswich Town and Queens Park Rangers for the relegated Sheffield United and Fulham respectively.

### ST. JOHN AMBULANCE BRIGADE

The First Aid Services on this Ground are provided by No. 5 Area of the St. John Ambulance Brigade, whose members work entirely voluntarily. New Recruits, Men, Nurses, Boy and Girl Cadets from 11 years, are very welcome.

Apply in the first instance to:

THE AREA SECRETARY, 49A Rodney Street, Liverpool 1

# Scrap Metal . . .

**Iron, Steel, Brass,  
Copper, Lead, Zinc  
ETC.**

**RE-USABLE STEEL — RSJs, ANGLES, &c.**

**L. RIFKIN (LIVERPOOL) LTD.**

Private Sidings :: Kirkdale Station

**LIVERPOOL 20**

Telephone—BOOTLE 3004/5

## EVERTON F.C. CENTRAL LEAGUE FIXTURES 1968-69

1968	F	A	Pts	1968	F	A	Pts
Aug. 10 Man. U.....H	1	2	-	Dec. 7 Stoke C. ....H			
„ 13 Burnley .....A	0	2	-	„ 14 Man. C. ....A			
„ 17 Huddersfield ...A	2	1	2	„ 21 Bolton W. ....H			
„ 20 Preston N.E. ...H	1	1	1	„ 26 Blackburn R....H			
„ 24 Newcastle .....H	2	1	2	„ 28 Derby C. ....A			
„ 28 Blackpool .....A	0	4	-				
„ 31 Nott'm F. ....A	P	P	-	1969			
Sept. 7 Bury .....H	3	1	2	Jan. 4 F. A. Cup (3)			
„ 14 Sheffield W. ...A	0	0	1	„ 11 Wolves .....H			
„ 16 Preston N.E. ...A	1	0	2	„ 18 Liverpool .....A			
„ 21 Coventry.....H				„ 25 Blackpool .....H			
„ 28 West Brom. ...A				Feb. 1 Sheffield U. ...H			
Oct. 5 Blackburn R....A				„ 8 Aston Villa.....A			
„ 8 Burnley .....H				„ 15 Leeds U.....H			
„ 12 Man. C. ....H				„ 22 Stoke C. ....A			
„ 19 Bolton W. ....A				Mar. 1 Man. U. ....A			
„ 26 Derby C. ....H				„ 8 Huddersfield ...H			
Nov. 2 Wolves .....A				„ 15 Newcastle U....A			
„ 9 Liverpool .....H				„ 22 Nott'm F. ....H			
„ 16 Sheffield U. ...A				„ 29 Bury .....A			
„ 23 Aston Villa.....H				April 5 West Brom. ...H			
„ 26 Leeds U.....A				„ 12 Coventry C. ...A			
				„ 19 Sheffield W. ...H			

## THE EVERTONIANS ASSOCIATION AGENTS WANTED TO ENJOY

- FREE STAND TICKETS FOR NEW AGENTS
  - TICKET PRIVILEGES FOR LEAGUE AND CUP GAMES
  - WEEKLY DRAW FOR FREE STAND SEATS
  - OUT OF POCKET EXPENSES PAID
  - COMMISSION ON MEMBERS WINNINGS
- PLUS BIG DAILY PRIZES FOR AGENTS' MEMBERS**

**OVER £20,000  
PAID OUT LAST YEAR  
IN PRIZE MONEY**

**£100 "Golden Goal" Tickets—on Sale  
GET YOURS. YOU COULD WIN £100**

**SIGN UP NOW AND  
SEE THE BIG GAMES IN COMFORT**

THE TRAINING FUND COMMITTEE, PROMOTER Mr. R. TYMS.

"GOLDEN GOAL" £100 WINNERS

EVERTON v. SHEFFIELD WEDNESDAY, 14th SEPTEMBER, 1968

Winning Time: 39 mins. 48 secs.

W. J. Jones, 2 Canterbury Street, Liverpool 19

T. J. Bouch, 28 Washington Street, Liverpool 1

### THE EVERTONIANS ASSOCIATION

EVERTON F.C. GROUND, GOODISON PARK, LIVERPOOL 4

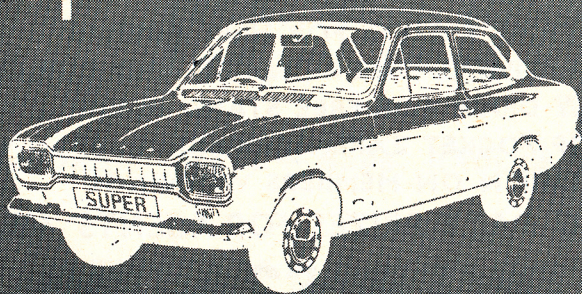
Please send me full details right away

Name.....

Address.....

**IT'S BETTER TO BE AN EVERTONIAN**

top cars,  
top men!



production workers

If you are over 18 you can earn 8/9½d. per hour after 4 weeks, working a 40 hour week, plus a shift allowance. We also have a contributory pension scheme in operation. Why not contact your local employment exchange and find out more details?

**Ford Motor Company Limited**  
Halewood,  
Liverpool L 24 9LE.

## HALF-TIME SCORES

FOOTBALL LEAGUE CUP—3rd ROUND

- A** BRENTFORD v. NORWICH CITY .....
- B** CARLISLE UNITED v. LEICESTER CITY .....
- C** ORIENT v. CRYSTAL PALACE .....
- D** SWINDON TOWN v. BLACKBURN ROVERS ...

**NEW! NOW! HURRY!**

Everton F.C. Supporters  
Club Holdalls  
**ONLY 22/6**



Officially approved in the Club Colours and available at 25, Church Street—NOW! There's a great range of other gear available too—including supporters scarves and bob caps, a full range of football kit and the largest selection of warm and weather-proof clothing! Call in and see for yourself the finest value in the country.

**Milletts 28**  
THE NAME TO VALUE

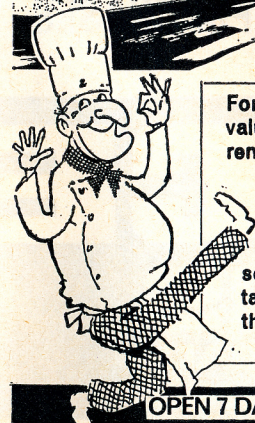
25, Church Street, Liverpool.



before or after the match  
-enjoy a visit to the **NEW**

**punch & judy**  
**snack & grill bar**

Concourse House, Lime Street, Liverpool



For ALL appetites—big or small—PUNCH & JUDY, best value of all! Liverpool's new, popular refreshment rendezvous, cheerful, friendly, good food, efficient service, popular prices.

From a cup of tea  
to a mixed grill  
—always  
something  
tasty at  
the P & J

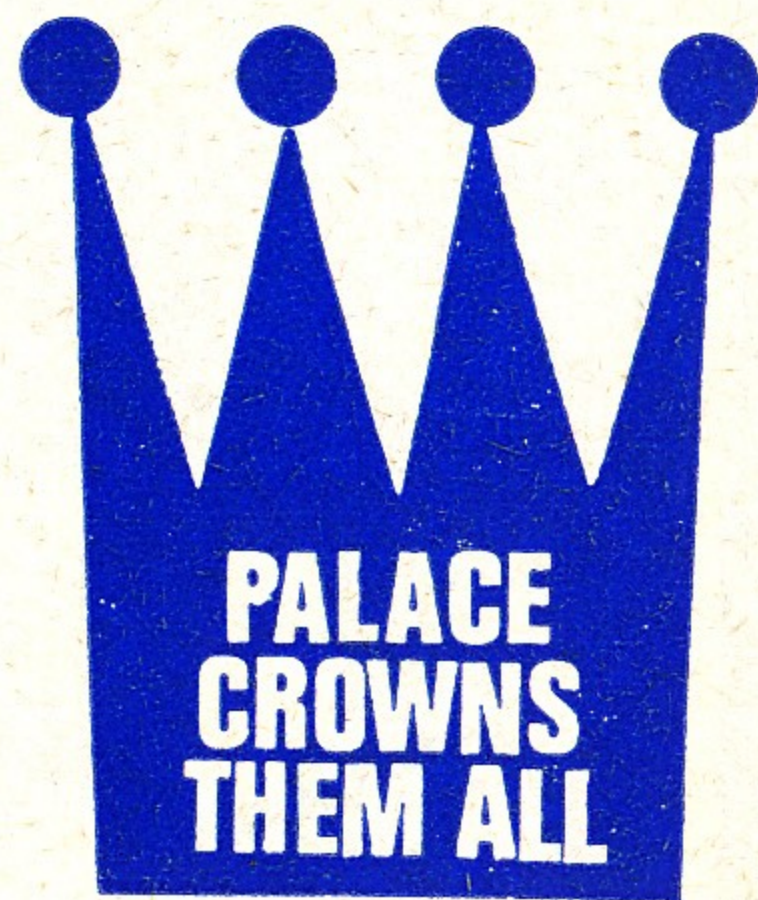


OPEN 7 DAYS A WEEK, Mon-Sat 7am-10.30pm, Sun 3pm-10.30pm.





**THE HOUSE  
OF INTEGRITY**



**ALWAYS**

**£100 MORE**

**FOR YOUR PART EXCHANGE AT**

**PALACE**

**GENEROUS DISCOUNTS ON ALL PURCHASES**

**PALACE**

**MOTORS**

**NEW CHESTER ROAD  
ROCK FERRY BIRKENHEAD**