

Vol. 3

No. 21

5 November 1968

WALSALL

v

LUTON
TOWN

Football League Div. III

in this issue

	page
From the press box ...	3
Teams and officials ...	4
Introducing our visitors ...	5
In retrospect ...	7
Peeks into the past ...	10
Lucky programme number	10
1st XI fixtures & results	11
I'm in charge ...	11
Supporters' Club news ...	12
Appearances & goalscorers	13
2nd XI fixtures & results	14
3rd XI fixtures & results	14
Ray Train ...	14

saddlers'

NEWS

THE WORTH OF A

$4\frac{1}{2}\%$

(Income Tax Paid) INVESTMENT
WITH THE SOCIETY IS EQUAL TO

$7\frac{2}{3}\%$

TO THE STANDARD RATE TAXPAYER

PLUS YOUR MONEY
BACK WHEN NEEDED

**WEDNESBURY
BUILDING SOCIETY**

ASSETS EXCEED £8,500,000

Local Office: 252 Wednesbury Road, Walsall
ALDRIDGE BILSTON
CRADLEY HEATH DARLASTON

Head Office: 52 Lower High Street, Wednesbury

Member of The Building Societies Association

Authorised for Investments by Trustees

OFFICIAL PROGRAMME

WALSALL FOOTBALL CLUB LTD.

FELLOWS PARK

WALSALL

Telephone 22791

Editor G. T. Allman
Assistant Editor R. F. Hargreaves



President
Mrs. W. H. L. HARRISON
Chairman
R. HARRISON
Vice-Chairman
H. S. HAWLEY
Directors
Sir ALFRED OWEN, C.B.E.
R. F. HARGREAVES
W. E. HOUGHTON
R. SILLETT
W. C. CLEMENTS
W. C. ADAMS
E. J. H. WOOD
Secretary & Commercial
Manager
E. G. WILSON
Team Manager
R. LEWIN
Medical Officer
R. L. McKECHNIE

Vol. 3 No. 21

TUESDAY NOVEMBER 5 1968

9d

from the press box

If I had to nominate a list of players considered the most valuable to Walsall in recent seasons, there is no doubt that Colin Harrison would be included in a high spot.

Although he has not established a regular first team place since making his debut as an 18 years old on the left wing in September, 1964, he has been very much a member on the senior team "pool."

VERSATILE COLIN

Colin, normally a wing half, has appeared at full back, half back, inside forward and on both wings, but his greatest value to the side has been highlighted since the introduction of the substitute rule three years ago.

It became particularly important to have a 12th man available who could be relied upon to slot in anywhere during an emergency, and just such a player is Colin Harrison.

In the 1964/65 season he played four times in the number 12 shirt; last year he took over a "sub" on six occasions, and so far this season he has gone onto the field to replace an injured colleague in five matches. More recently his versatility has been further proved by the manner in which he stepped into the team at right back for injured skipper Frank Gregg.

BUSY No. 12

Managers with this type of utility player, willing to play anywhere and not dissatisfied when out of the side, are fortunate indeed.

While on the subject of substitutes, it is interesting to note that Walsall have been forced to bring on their twelfth man in 13 of their 19 league and cup matches to date. I believe the switch has only been made once for tactical reasons—the other occasions being due to injuries, which emphasises how valuable the rule has been since it was introduced in a blaze of controversy. It is rare to see a team battling away with a man short these days.

Some supporters seem to be finding it difficult to understand the system of numbering players. Because, in past years, No. 2 was always the right back and No. 11 the left winger there are people who are puzzled if this old fashioned procedure is not adopted.



WHEN TO JUDGE

The very fact that England won the World Cup with no recognised wingers and a goalscorer at No. 16 should have been enough to hammer home the fact that numbers are only there to help identify players, not to dictate which section of the pitch they wear out. Manager Ron Lewin is modern in outlook, and when his team-building efforts are complete I feel sure the fans will see good results from his long term planning. He prefers to be judged more on the position the team holds in the third division at the end of the season than the one occupied less than half way through.

Football League

3rd DIVISION

Teams subject to alteration

LAWRENCE & PLATER
(SPORTS) LTD
57-59 BRIDGE STREET
WALSALL

Walsall v. Luton Town

White shirts

Red shirts

	No.	
Wesson	1	Davie
Harrison	2	Dougan
Harris	3	McDermott
Trevis	4	Allen
Jones	5	Slough
Atthey	6	Bannister
Murray	7	Denton
Baker	8	Lewis
Wilson	9	Sheffield
Bennett	10	Rioch
Morris	11	Whittaker
<i>MCMORRAN</i> Train	12	Potter

Referee
Mr. R. Darlington
(Runcorn)

Linesmen
Mr. R. A. Woodward Red flag
Mr. K. Hodgkinson Yellow flag

SPORTING STAR

forthcoming attractions

SATURDAY
9 November

Blaby & District Boys' Club

F.A. YOUTH CUP
Kick-off 3.00

TUESDAY
12 November

Arsenal

FOOTBALL COMBINATION
Kick-off 7.30



introducing our visitors

By the Editor.

In their 83 years of existence Luton Town have certainly known the meanings of "Ups and Downs" and they come here tonight happily on an upward wave under the shrewd guidance of Alan Brown, whom many of us will remember as one of Scotland's greatest inside forwards who was twice most cruelly robbed of a Cup Final medal by serious injury.

Founded in 1885 by the amalgamation of Wanderers and Excelsior, Luton were pioneers of professional football in the South of England, employing paid players as early as 1890. They were elected to Division II in 1897, but dropped out in 1900 and joined the new Division III in 1920. They won Division III (South) in 1936/7 after being runners-up the previous season. In their promotion year the fabulous Joe Payne netted 55 goals, including 10 in one game against Bristol Rovers.

They remained in Division II until 1954/5 when they were promoted along with Birmingham City. In 1958/9 they reached the F.A. Cup Final under Syd Owen's captaincy, losing 2-1 to Notting-

ham Forest. The following season, however, they suffered relegation to Division II and in 1962/3 they slipped to Division III together with ourselves. Even then the slide continued and in 1964/5 they completed their experience of all four divisions when they were relegated to Division IV. Goalkeeper Ron Baynham thus had the rare distinction of playing for them in a Cup Final and in all four Divisions—but unfortunately in the wrong order.

On a much happier note they leaped back to Division III at the end of last season by topping Division IV with 66 points and virtually the same team is now pressing hard to reach Division II at the first attempt.

(Continued on page 15)



LUTON TOWN, 1968/9

Back row: Bill McDermott, Alan Slough, Max Dougan, Bill Taylor, Tony Read, Terry Branston, Fred Jardine, John Moore.
Front row: Keith Allen, Graham French, Brian Lewis, Laurie Sheffield, Bruce Rioch, Ray Whittaker, Mike Harrison.

VALUABLE ADVERTISING SPACE
AVAILABLE IN THIS PROGRAMME

Please apply to:

H. Bermitz Publicity Ltd.

Ferres Chambers, 22 Whitefriargate, Hull,
Yorkshire. Telephone: 20983

Meet the Rogues and Cads

John S Devey Limited

22 Digbeth Walsall
and
194 High St. Bloxwich



Shoes too comfortable to take off!

in retrospect

Walsall v. Luton Town

Luton Town have had slightly the better of the exchanges in our few previous meetings, winning 4 games to our three with one drawn. We have, however, scored 13 goals against 10. In season 1961/2 two goals by Tommy Wilson enabled us to win a Boxing Day encounter 2-0, but unfortunately Tommy fractured a collar-bone later in the game. Later in the season the "Hatters" levelled matters with a 2-0 win at Kenilworth Road.

SEASON 1962/3

This was the season which ended with both clubs being relegated to Division 3, but the two games brought a fair share of thrills.

In November we visited Kenilworth Road, with John Christie replacing Alan Boswell in goal, but this proved to be an unhappy match for our Scottish 'keeper. After George Meek had equalised an early goal by Walden, Ron Davies stepped in to score twice before half-time. Jardine made it 4-1 early in the second half, but both George Meek and Colin Taylor reduced the arrears and Ron Baynam and his defenders were hard pressed to hang on to the 4-3 lead. The return match was made farcical by a strong wind blowing from the Hillary Street end. Early in the game Morton netted a 30-yarder that the wind assisted, but Granville Palin soon equalised from the "spot" after Bramwell had handled Meek's corner. Amongst later thrills was a penalty miss by Gordon Turner who shot well wide after Eden had brought down McKechnie, but the score remained at 1-1.

SEASON 1963/4

The teams opened their Third Division programme with an uninspiring game at Luton which the home side won 1-0 with a first-half goal by Turner. In the return game in December we had our best win of the season. In the first half Ray Wiggin cleverly steered a Hodgkisson pass into the net and soon afterwards a Foster shot was deflected in by visiting

pivot Gordon Fincham. Inspired by this healthy interval lead and the new "Saddlers' Song" which was played for the first time that day, we attacked for most of the second half. Ray Wiggin nodded in a splendid cross from Ken Hodgkisson and the fourth and best goal came when Trevor Foster dived to head in a centre from Meek. The final score was 4-0, with George Meek hitting the bar in the closing minutes.

SEASON 1964/5

Easter brought the teams together twice with Walsall on the crest of a wave having gained 19 points from the previous 14 games, but with Luton facing almost certain relegation. At Kenilworth Road, Allan Clarke scored after 2 minutes, Ted Phillips equalised after 7, only for Clarke to restore the advantage 20 minutes later. This time we managed to hold on in a lively game



Trevor Foster
Now with Dudley

and things were settled when Colin Taylor netted a splendid 25 yarder in the second half. Back here on Easter Monday, the "Hatters" gained revenge when Ted Phillips netted the only goal of the game, but it was too late to save them from Division 4.

Incidentally, of the teams playing that day Frank Gregg, John Harris, Stan Bennett and Nick Atthey are still with us, whilst Fred Jardine and Ray Whittaker of the Luton team "survive."

The teams were:

WALSALL: Carling; Gregg, Harris; Sissons, Bennett, Atthey; Satchwell, Clarke, Hodgkisson, Ford, Taylor.

LUTON: Tinsley; McBain, Jardine; Lownds, Gibson, Reid; Harber, Phillips, Riddick, McKechnie, Whittaker.

FOR FOOTBALL, CRICKET, GOLF, SQUASH,
TENNIS & ALL SPORTING EQUIPMENT!
DAVID BROWN & JIM STEWART
Sports Ltd.

6 WEST BROMWICH ST., WALSALL Tel. 29042

CHEMISTS—

BANNISTER & THATCHER LTD.

177 WEDNESBURY ROAD, PLECK
(200 yards from Walsall Football Ground)

Other Branches WALSALL and BLOXWICH Official Suppliers to Walsall Football Club

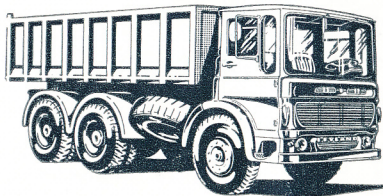
SINGLETON & COLE LTD.

ESTABLISHED 1870

Wholesalers to the Tobacco, Fancy Goods and Confectionery Trades
37 CALDMORE ROAD, WALSALL — WALSALL 26651-2-3
ASK FOR SINGLETON'S SUPER MENTHOL SNUFF

FOR ALL LEYLAND GROUP VEHICLES
CONTACT
BROWNHILLS MOTOR SALES LTD.

Directors: C. H. R. FERRIE and A. FERRIE
LARGE RANGE OF NEW VEHICLES
ALWAYS IN STOCK
PHONE BELOW



Bodies and Containers
Built to Specifications

Tipping Gear Specialists
24-Hour Recovery Service

Uphill or Downhill
it must be from
BROWNHILLS

LINDON ROAD, BROWNHILLS, STAFFS.

Ansafone (8 p.m.—8 a.m.) 24 Hour Service
Telephone: 2525/6/7/8

Telex: 338114

Telephone
WALSALL 24390
WALSALL 23419

Central Coachways
(WALSALL) **Ltd.**

2, MARSH STREET

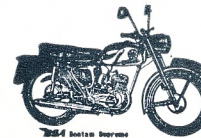


WALSALL

TRIPLEX
FOUNDRIES GROUP LIMITED
FOUNDRIES PLASTICS
LIGHT ENGINEERING RETAIL
CONSTRUCTIONAL ENGINEERING
PHONE 021-557 1293
TIPTON STAFFS.

LORDS LTD.

WHOLESALE AND FAMILY Wine, Spirit, Cigar and Cigarette Merchants
Ale, Stout and Cider Bottlers Licensed Caterers
25 LEICESTER STREET, WALSALL. Telephone: 27394 (3 lines)



Telephone: Bloxwich 75036

John Brittain (Motor Cycles)

CHURCH STREET, BLOXWICH, STAFFORDSHIRE
B.S.A. : HONDA : SUZUKI Motorcycles
LAMBRETTA Scooters RELIANT Cars

Established 1910

Phone WES 0352

J. SHARRATT & SONS LTD.

Member of the Triplex Foundries Group

CARTERS GREEN, WEST BROMWICH

Dealers for

HUMBER, HILLMAN, SUNBEAM CARS

and

COMMER COMMERCIAL VEHICLES

PEEK INTO THE PAST

Continued from Vol. 3 No. 20

Instalment LVII

SEASON 1932/33

After our victory over the Arsenal, the draw for the next round was, needless to say, very eagerly awaited. "Gateshead or Manchester City" came out of the hat as our hosts. A few days later came the news that City had romped home 9-0 in the replay at Maine Road and the morning papers carried the headline "City's warning to Walsall." The next day, as it happened, we played a re-arranged League match against Mansfield Town and our team still had the "Arsenal feeling." They followed up the sensational Cup success by whipping the "Stags" 8-1, which still stands as our record home win in the Third Division and the headline the next morning was "Walsall's warning to City."

Undoubtedly the visit of the "giant killers" to Maine Road aroused considerable interest in Manchester and district and on Saturday, January 28, 1933, there assembled a crowd of 52,085 on the City ground, our share of the receipts being £1,264.

The weather during the previous week had been rather wintry and some uncertainty regarding the state of the pitch arose. Though it proved not quite as bad as expected, it was frostbound in places and the foothold was rather uncertain. Whether it was due to the change in conditions, for both previous games had been played on heavy grounds or that the City, having been duly "warned" were in no mood to be caught napping through over-confidence,

the fact remains that we seldom shaped like bringing off another surprise result. The City didn't have the game all their own way, but they were generally calling the tune and always looked the more likely to score. Our defence, however, stood up well and it was not until near the interval that Cunningham was beaten by Eric Brook, City's well-known winger.

Fairly early in the second half the same player got a second goal and although we rallied and came more prominently into the game we were unable to reduce our arrears and so our cup competition came to an end after a



by W. B. Rowlinson

hard fight. If we did not quite maintain our reputation as "giant-killers" we did at least give our First Division opponents a very good run for their money.

Our team was the

one which had beaten Arsenal and City lined up: Langford; Ridley, Dale; Bushby, Cowan, Bray; Toseland, Marshall, Tilson, McMullan, Brook.

That we were certainly not disgraced was proved when in the subsequent rounds City won by 4-2 at Bolton and 1-0 at Burnley to enter the semi-final. They beat Derby County 3-2 at Huddersfield but in the final were beaten 3-0 by Everton.

A sequel to our performance against the Arsenal was that a London amateur team, Islington Corinthians, expressed a wish to pay us a visit and with the co-operation of Walsall Rotary Club and Islington Rotary Club a match was arranged which we won by 3-1 with "Bill" Sheppard netting a hat-trick.

(To be continued)



lucky programme number

No 2258

Prog. No. 20 (v. Rotherham)
 Winning No. 1645-£3
 Mr. B. Singh,
 22 Cannon Street, Walsall.
 Winning No. 2983-£2
 Not yet claimed.
 Winning No. 2701-£1
 Not yet claimed

LISTEN at half-time for today's "Lucky Numbers." These will be announced over the loudspeakers and the holders of the programmes bearing the numbers announced will win prizes of £3, £2 and £1 respectively.

Holders may collect their prizes from the club office immediately after the match.

First XI fixtures and results

FOOTBALL LEAGUE 3rd DIVISION

© The Football League Ltd. 1968

Matches are played on Saturdays unless otherwise stated

1968	Opponents	Ground	Result	Gate	Goalscorers
Aug. 1	(Friendly) ASTON VILLA	Thur. H	0 1	10,505	
5	(Friendly) LEICESTER	Mon. H	1 0	6,192	Roberts (o.g.)
10	Shrewsbury	A	1 0	7,978	Jones
13	* (1) SHREWSBURY	Tues. H	2 0	9,168	Murray, Biggs (Pen.)
17	BRISTOL ROVERS	H	2 2	7,593	Watson, Biggs
23	Stockport	Fri. A	2 2	8,043	Biggs, Watson
27	Watford	Tues. A	0 0	9,361	
31	NORTHAMPTON	H	0 1	7,762	
Sept. 3	* (2) SWANSEA	Tues. H	1 1	7,462	Biggs
7	READING	H	2 2	6,965	Wilson, Atthey
10	* (2) Swansea	Tues. A	2 3	10,742	Biggs (2)
14	Swindon	A	0 1	10,594	
18	Plymouth	Wed. A	0 1	11,118	
20	CREWE	Fri. H	1 1	5,570	Wilson
28	Bournemouth	A	0 1	8,645	
30	Torquay	Mcn. A	2 4	7,565	Biggs (2)
Oct. 5	SOUTHPORT	H	3 0	5,731	Wilson, Morris (2)
8	WATFORD	Tues. H	0 0	6,074	
12	Barnsley	A	0 0	11,314	
19	OLDHAM	H	2 1	5,552	Wilson (2)
25	Tranmere	Fri. A	1 2	6,500	Morris
Nov. 2	ROTHERHAM	H	0 0	4,857	
5	LUTON	Tues. H			
9	Gillingham	A			
16	† (1)				
23	Barrow	A			
30	BRIGHTON	H			
Dec. 7	† (2)				
14	BARNSELY	H			
20	Oldham	Fri. A			
26	Southport	Thur. A			
28	TRANMERE	H			
1969					
Jan. 4	MANSFIELD	H			
11	Rotherham	A			
18	GILLINGHAM	H			
25	Luton	A			
Feb. 1	Orient	A			
8	BARROW	H			
15	Brighton	A			
22	TORQUAY	H			
Mar. 1	SHREWSBURY	H			
3	Mansfield	Mon. A			
8	Bristol Rovers	A			
11	ORIENT	Tues. H			
15	STOCKPORT	H			
22	Northampton	A			
28	Reading	Fri. A			
Apr. 4	Hartlepoons	Fri. A			
5	BOURNEMOUTH	Sat. H			
7	PLYMOUTH	Mon. H			
11	Crewe	Fri. A			
15	HARTLEPOOLS	Tues. H			
19	SWINDON	H			

* Football League Cup

† Football Association Cup

I'M IN CHARGE

Referee: Mr. R. DARLINGTON
(Runcorn)

Mr. Roy Darlington commenced refereeing in the Runcorn & District League in season 1952/3 and after service with the West-Cheshire, Cheshire County and Central Leagues he graduated to the Football League's Linesman's list in 1962 and to the Referee's list in 1966.

A single man, Mr. Darlington lives with his widowed mother and is employed as a pavior with the Runcorn Urban District Council. At present he is Chairman of the Runcorn Referee's Society. A twin brother of Mr. Darlington was at one time a part-time professional on Everton's books.

SUPPORTERS' CLUB NOTES AND NEWS

EXTENSIONS TO "THE SADDLERS' CLUB"

At our recent Annual General Meeting, a report of which appeared in these notes last Saturday, news was given that extensions are to be made by the Football Club to "The Saddlers' Club" in the near future. Negotiations to this end have been going on behind the scenes for some months with the result that as soon as the plans receive official approval the work will commence.

Briefly the plans include the widening of the concert hall, a larger stage and the provision of another bar in the existing lounge section of the present hall. This will enable the concert hall to be shut off from the remainder of the club and so members not desirous of watching the concerts, etc., will be able to "have a drink" in the bar without paying an admission charge for a show they, for various reasons, do not wish to attend.

In addition to these extensions provision will also be made for a steward's flat to be built above the hall at a later date.

THE NEW HANDBOOKS

Although sales of our new handbook during the last ten days have been excessive we still have supplies available at the Sales Kiosk, 61 Bradford Street, and "The Saddlers' Club." Costing still only one shilling each they are a "must" for all Walsall supporters and contain articles by the Football Club Chairman, the Commercial Manager, the Team Manager, soccer journalists and many others. There are pages of statistics, action pictures, fixtures, etc., in this

popular book which again has been compiled and edited by Mr. Frank Lewis.

COACHES TO THE AWAY FIXTURES

Next Sat., Nov. 9th: Gillingham v Walsall
Coaches to this fixture will leave Bloxwich at 7.50 a.m., Walsall 8.0 a.m., Pleck 8.05 a.m. when the fare for adults will be 19/6 and 13/- for juniors. Please book tonight at the Kiosk or at the Hillary Street entrance, or at 61 Bradford Street tomorrow night or early on Friday evening.



Should Walsall have been drawn away in the first round of the F.A. Cup on Saturday week details of the coaches will be announced over the loudspeaker system at half time tonight.

by
BERNARD JOHNSTON

THE BALL STUNT SPECIAL COMPETITION

Sat., Nov. 2nd—Walsall v. Rotherham
029251 Mr. A. L. Batts, 125
125 Broadway West,
Walsall £8 19 0

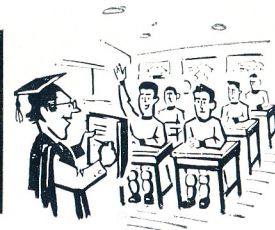
022900 Mr. D. Altree, Ruge-
ley Road, Hazel Slade Match Ball

FOOTBALL DUFFLE BAGS

Special red and white duffle bags for Walsall supporters are now on sale at the Sales Kiosk, price 8/- each. Also available are badges, pennants (including the official Luton F.C. championship pennant), rosettes, programmes, books, etc., all at reasonable prices.



appearances and goalscorers



(Substitute appearances in parentheses)

TO OCTOBER 31

PLAYERS Alphabetically	LEAGUE		LEAGUE CUP		F.A. CUP		COMBN.		COMBN. CUP		STAFFS. CUP	
	App.	Goals	App.	Goals	App.	Goals	App.	Goals	App.	Goals	App.	Goals
Allner	4	1	10	4	...	1
Atthey	14	1	...	3
Baker, A.	6	1	3	...	2	1	...	1
Baker, R.	2	...	1(1)
Ball	4	...	10
Bennett	16	3
Biggs	12(1)	4	...	3	4
Burckitt	3	1	10	1
Cross	2	(1)	1	...	10
Evans	12	2
Fleet	4	1	2(2)	1
Forrest	4	...	7	1
Gough	(2)	(1)
Gregg	13	3
Harris	3	1	1	...	8
Harrison	5(5)	1	5	2	...	1
Jones	16	1	...	3
Keley	1
Meath	2	4	2	8	1	...	1
Mighalls	3	...	10	1
Morris	15	3	...	3
Murray	6(2)	3	1	...	3	3	3	1
Parke	1
Ratcliffe	1	...	3(1)	1
Tindall	7	1	2	1	2	1
Train	4(1)	10	3
Trevis	6
Watson, C.	3
Watson, T.	10	2	...	3
Wesson	16	3
Williams	4	...	6(1)	...	1	1
Wilson	11	5
Own Goals	1	...	1	...	1

There are Good Grounds for using . . .

CANNOCK GRASS SEEDS
FERTILISERS

As used at Fellows Park and Sports Grounds,
Parks and Gardens throughout the country.
THE CANNOCK AGRICULTURAL CO. LTD.
STAFFS. Telephone: Cannock 2727

Follow the
SADDLERS
Every Friday in the
Walsall Observer

Second XI fixtures and results

FOOTBALL COMBINATION

Matches are played on Saturdays unless otherwise shown

1968	Opponents	Ground	Score
July 27	(Friendly) Bromsgrove	A	3 1
Aug. 3	(Friendly) Wellington	A	6 1
10	NORTHAMPTON TOWN	H	3 2
21	†Peterborough	Wed. A	1 1
24	Q.P.R.	H	2 1
27	PETERBOROUGH	Tues. H	1 2
31	†Luton	A	2 0
Sept. 7	†West Ham	A	2 4
10	BIRMINGHAM CITY	Tues. H	0 0
17	LEICESTER CITY	Tues. H	1 1
21	†Leicester City	A	1 2
24	†Northampton Town	Tues. A	2 1
Oct. 5	Fulham	A	1 2
12	SWANSEA	H	2 3
15	*BILSTON	H	4 1
19	Q.P.R.	A	2 7
26	READING	H	5 0
Nov. 2	Ipswich Town	A	2 6
12	ARSENAL	Tues. H	
19	TOTTENHAM HOTSPUR	Tues. H	
26	OXFORD	Tues. H	
Dec. 7	SOUTHAMPTON	H	
14	Gillingham	A	
21	LEICESTER CITY	H	
28	Luton	A	
1969			
Jan. 4	Birmingham City	A	
11	Plymouth	A	
28	NORTHAMPTON TOWN	Tues. H	
Feb. 4	BRISTOL CITY	Tues. H	
11	CHELSEA	Tues. H	
25	BRISTOL ROVERS	Tues. H	
Mar. 1	Cardiff City	A	
18	WEST HAM	Tues. H	
22	Swindon	A	
29	Crystal Palace	A	
Apr. 5	Peterborough	A	
12	NORWICH	H	
19	Bournemouth	A	
	† Football Combination Cup.		
	* Staffs. Senior Cup.		
	To be arranged:	A	
	* Stoke City		

Third XI fixtures and results

MIDLAND INTERMEDIATE LEAGUE

Matches are played on Saturdays unless otherwise shown

1968	Opponents	Ground	Score
Aug. 31	†Shrewsbury Town	A	1 5
Sept. 7	†Birmingham City	A	0 1
14	COVENTRY CITY	H	2 2
28	ASTON VILLA	H	3 2
Oct. 5	†Coventry City	A	0 5
12	SHREWSBURY TOWN	H	0 3
30	B'HAM CITY	H	3 1
Nov. 2	Leicester City	A	
9	*Blaby & Dist. Boys Club	H	
16	Notts. County	A	
23	MANSFIELD	H	
Dec. 7	Aston Villa	A	
14	Shrewsbury Town	A	
21	COVENTRY CITY	H	
28	Derby County	A	
1969			
Jan. 4	Stoke City	A	
11	PORT VALE	H	
18	Notts. Forest	A	
25	ASTON VILLA	H	
Feb. 1	LEICESTER CITY	H	
8	Mansfield Town	A	
15	NOTTS. FOREST	H	
Mar. 8	B'HAM CITY	H	
15	Coventry City	A	
22	Port Vale	A	
Apr. 5	NOTTS. COUNTY	H	
12	W.B.A.	A	
16	STOKE CITY	Wed. H	
19	SHREWSBURY TOWN	Wed. H	
23	DERBY COUNTY	Wed. H	
26	B'ham City	A	
	† Cup Competition.		
	* F.A. Youth Cup.		
	To be arranged:—		
	†Aston Villa	A	
	†W.B.A.	H	
	†W.B.A.	A	

TELEPHONE 26298 and 23101

JOHN TOON & PARTNERS LTD.

PLUMBING CONTRACTORS

and

HEATING ENGINEERS

Registered Office and Works:

226 MILTON STREET, WALSALL

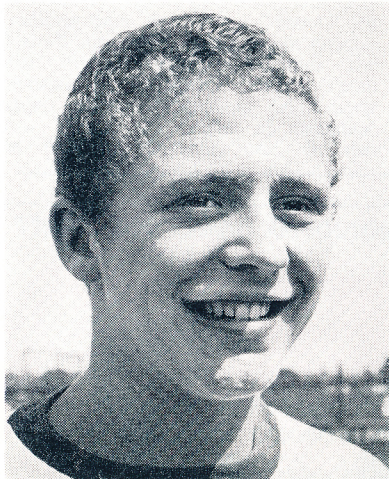
INTRODUCING OUR VISITORS—continued.

HERE TONIGHT

Bruce RIOCH, scorer of 28 goals last season, is again finding the net regularly. He has the rare knack of working hard in midfield and yet seeming always "on the spot" in front of goal. Brian LEWIS, who was formerly with Portsmouth and Coventry and Laurie SHEFFIELD (signed from Oldham during the close season) are also amongst the leading scorers in Division III. Ian BUXTON, the Derbyshire cricketer and Wolverhampton born ex-Youth International Graham FRENCH complete an illustrious forward line with long-serving Ray WHITTAKER (ex-Arsenal) pressing hard for a regular place.

In goal we shall probably be seeing newly acquired Sandy DAVIE, a Scottish

under-23 international from Dundee Utd., a worthy successor to those splendid former "Hatters" keepers Bernard Stretten (who guested for us during the war) and Ron Baynham. At full-back Bill McDERMENT has now become a "regular" after being an outstanding substitute last season and he is partnered by Freddie JARDINE, whom we remember as a dangerous forward in our Second Division days. Pivot Terry BRANSTON was with Northampton during the whole of their meteoric rise from Division IV to Division I and has already made a splendid start to a similar journey with Luton. Wing halves Keith ALLEN and Alan SLOUGH have settled in midfield after experience at centre forward and full-back respectively thereby underlining the adaptability and fluidity which are hallmarks of Alan Brown's splendid team.



Walsall Observer Photograph

RAY TRAIN,

the most recent addition to our First Team "Pool." A native of Bedworth, he was signed from his home town team at the beginning of last season. He played for most of the season in the Intermediate League team and made his reserve team debut on Easter Monday, scoring our only goal against Peterborough.

This season, after only ten games in the Reserves, he made his first-team debut against Southport on October 5 and has already created a big impression.

GREENS

THE GREATEST IN SOFT DRINKS

73 FLORENCE ROAD, WEST BROMWICH

DO YOU WANT

PROMOTION THIS SEASON?

THEN GET A JOB AT

JAMES BRIDGE COPPER WORKS LTD.

DARLASTON ROAD, WALSALL

PHONE 21292

RIGHT ON THE M6!

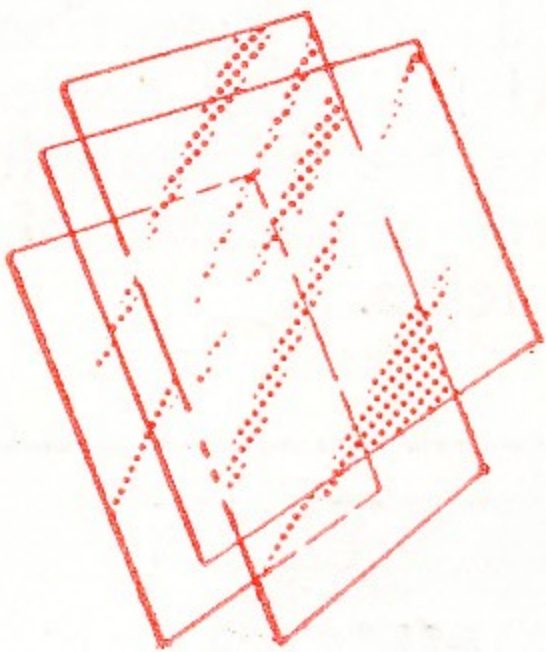
invest

in



WALSALL MUTUAL BUILDING SOCIETY
41-45 BRIDGE STREET, WALSALL
Telephone: 27525

GET YOUR GLASS FROM



WALSALL GLASS LIMITED

SUPPLIERS AND FIXERS OF ALL TYPES OF
SHEET, PLATE AND FIGURED GLASS

Works & Offices **ROLLINGMILL ST., WALSALL**
Walsall 27875

Phone Walsall 24378

Established more than a century

W. J. RAY & CO. LTD.

GENERAL AND COMMERCIAL PRINTERS

WEDGE STREET / WAREWELL STREET
WALSALL

★ THE PRINTERS OF THIS PROGRAMME ★