

# CITY LEAGUE CHAMPIONS

**SATURDAY  
JANUARY 4th 1969  
Kick-off 3-00 p.m.**

**VERSUS**

# LUTON TOWN



**MANCHESTER CITY FOOTBALL CLUB LTD.**

**F.A. Challenge Cup—3rd Round**

**OFFICIAL PROGRAMME ONE SHILLING**

WINNERS F. A. CHALLENGE CUP  
1904, 1934, 1956

FINALISTS F. A. CHALLENGE CUP  
1926, 1933, 1955

LEAGUE (1st DIVISION)  
CHAMPIONS 1937, 1968

RUNNERS-UP 1904, 1921

LEAGUE (2nd DIVISION)  
CHAMPIONS 1899, 1903, 1910,  
1928, 1947, 1966

RUNNERS-UP 1896, 1951

# MANCHESTER CITY FOOTBALL CLUB LIMITED

MAINE ROAD, MOSS SIDE, MANCHESTER 14  
Tel.: MOS 1191 Grams.: 'Football', Manchester 14  
Chairman: A. V. Alexander Vice-Chairman: F. R. Johnson  
Directors: A. E. Alexander, M.S.J.A. J. J. H. Humphreys  
C. B. Muir S. S. Rosa, M.B., F.R.C.S.  
Secretary: W. Griffiths, Team Manager: J. Mercer

Vol. 10 No. 18 (New Series)

SATURDAY, 4th JAN., 1969

**Introducing :**

**KEN DOVE**

**Organiser of City Bingo**

Thirty-three years old Ken Dove was born in South Shields—a medium sized industrial town, which is situated on the North East coast at the mouth of the River Tyne.

He is married, and before moving to Manchester had his own business in South Shields.

Ken served as a wireless operator in the R.A.F., and enjoys golfing when the time permits, although since going into business on his own account he did not find a great amount of time to play. "I am hoping to join a club in the Manchester area—then fight to get my handicap down to 12 again" says Ken.

A keen "do-it-yourselfer" Ken relaxes by carrying out his own house alterations, and interior decorations. His wife Cathy enjoys home designing too and has an artistic flare, her experience probably being derived from 8 years experience as a window dresser with a large North Eastern Fashion House.

On his demob from the R.A.F. Ken started taking an active interest in his local football team. His connection with the club eventually led to him taking over the money raising scheme, and putting his own ideas into operation. Since that time the scheme has grown and is now a very healthy source of revenue for the club. Ken says, "It was a hard, uphill struggle in the early days—and it was just a case of trial and error, until we hit on the right sort of competition."

Having learned the job the hard way, his experience is going to stand him in very good stead for the task he has taken on at Maine Road.

Although the new competition does not start until Monday 6th January, Ken tells us that the response has been excellent, and all the indications are that this is going to be a great success. Ken goes on "I must thank the agents who are helping me on this project—with a special thanks to those who laid the foundation stones—namely the existing agents. I have found everyone most friendly and co-operative, and I hope in time to meet all of our agents personally."

It is my aim to raise sufficient money to make Maine Road the leading stadium in the North, with the emphasis on covering the Scoreboard end initially. We have got a great team both on and off the field, and we are going to prove that in everything, City are second to none".

Front Cover Picture: Gordon West reveals England class form in making a vital save at Mike Summerbee's feet during a City attack on the Everton goal in the Boxing Day match.

Photo: Wm. Bradley

# CITY NEWS

By GERRY HARRISON

After all the ballyhoo, the publicity, the forecasts, and the if's and but's it is judgement day once again with a magic of its own—the Cup.

All good things start from the home they say and let us hope that a good Cup run will be one of them. But do not let ground advantage and Football League divisions influence you too much. There are no divisions in the Cup and luck and good fortune are better things to have on your side than ground advantage. Mind you, any advantage is a blessing. Particularly when you remember what can happen . . . as in January 1961 for instance when City were drawn to play at Luton in the Cup . . . we were 6-2 up, all scored by a fellow called **Denis Law**, when the game played on a mud-heap was abandoned. No need to say what happened in the replay.

It will be nice to welcome Luton's new manager, **Alec Stock**, this afternoon. It is interesting though that members of the City staff have probably seen more of Luton in the last eighteen months than Alec Stock himself. When he took the post recently Mr. Stock admitted that he had not much detailed knowledge of the Luton team. City, though, were for some time watching the progress of—along with a few other clubs—Luton's leading scorer, **Bruce Rioch** who scored another two goals last week in difficult conditions.

Bruce Rioch's brother Dan has been selected for the England Youth party's next gathering. But the selections which really interest City fans are those of **Tony Towers** and **Ian Bowyer**. Tony, Ian and **Graham Howell** all played in the last England Youth

trial—against Burnley. They v England team which won 1-0. has featured in all the trial sessions. It must be terribly for Graham Howell to be omitted in next stage. Nothing is final yet of course. But it might be some consolation that two of City's England players, Mike Summerbee, and Colin Bell didn't play for England at Youth level.

But it was very satisfying for **Ian Bowyer** to be picked for this twenty-two. In the trials he had not been able to get into the game as much as he had hoped. This latest game, though gave him another chance which he obviously took well.

Tony Book—after 18 weeks lay-off passed another stage test in his fight for fitness and football this week . . . by no means an easy one. Under **Derek Ibbotson** and **Joe Lancaster**, City were put through their running paces at Wythenshawe at the beginning of the week. Among the runners were **Tony Book** and **Stan Horne**. Said Tony: "I joined the first bit of running and it turned out to be the long one. That hadn't really been on the menu for me but I managed it and the rest of the training all right—so I'm quite pleased." Both Stan Horne who has done this training recently and Tony Book are able to train each day and although they still feel the understandable aches and pains they are able to train the next day.

Another Booth? **Tommy Booth's** brother, **Paul** who is 14 and plays centre-half for Bishop Marshall School, Middleton is spending a few days with the Club over his school holidays. He is reported to have many of the characteristics of his brother. Tommy's assessment of his young brother: "Not bad".

**Entertainment:** Today we welcome the Burbage Silver Prize Band from Buxton who come to Maine Road with an excellent record in Competitions and should provide typical Cup-Tie pre-match entertainment.

F.C., Maine Road, Man-

# CENTRAL LEAGUE

## The Reserves—Half Term Report...

The season began with the reserve team feeling the effects of the crop of injuries to experienced players which threw what were virtually youth team players into Central League football together. **Tommy Booth** was injured too, so with key figures missing, eight out of the first eleven matches were lost. But by the end of September the policy of putting faith and responsibility on the younger players began to pay off. They were learning how to exploit their domination of stages and situations in the game; they were steadier after conceding a goal; they became much tighter at the back. In almost every case it was a question of the professional taking over from the apprentice and the schoolboy. Players like **Graham Howell**, **Tony Towers** and **Derek Jeffries** made great strides; and forwards **Jimmy Mundy** and **David Cunliffe** increased their important contributions

by adding to their running—particularly in defensive situations. Of course there was no doubt that the team overall benefited with the inclusion of **George Heslop** and **Ken Mulhearn** who have helped players like **Ray Hatton** relax more. **Stan Bowles** and **Bobby Owen** have always been on the fringe of the first team and there has never been much doubt about their value at this level. **Ian Bowyer** made his first team debut at Newcastle and with no weaknesses in his mental and physical approach to the game he is sparing no effort to try to add that polish to his game which will put him into the first team squad. **Buddy Woods**, **Tony Jackson**, **John Bingham** and **Chris Glennon**, all skilful and hard working are concentrating on their mental attitude to this level of football. All of them hit the high spots. Now, they are trying to keep themselves there. In the months of October, November and December only three matches were lost, one in each month . . . sixteen points from a possible twenty-two, which reveals just how much the team has developed. Of those victories **Dave Ewing** picks out the one at Everton as the highlight of this half of the season so far. And to win there indicates the potential of the side most considerably.

*For prompt and reliable service...*

**TRUMANN'S**  
steel service centre

daily deliveries to all parts



**TRUMANN'S (steel) LTD**  
steel stockists

MOSS LANE WALKDEN MANCHESTER  
Tel: WALKDEN 4511 (10 lines) Telex 88605

1968

FIXTURES

1969

"The League 1st Division fixtures are the copyright of The Football League Limited, and are printed by their permission under Licence No. 2. They must not be reproduced in whole or in part without permission from The Football League Limited."

## LEAGUE 1st DIVISION

| Date 1968 | Opponents                                 | Attendance |         | Result  |         |
|-----------|---|------------|---------|---------|---------|
|           |   | 1967/68    | 1968/69 | 1967/68 | 1968/69 |
| Aug. 3    | W. B. Albion (F.A. Charity Shield) ... H  | —          | 35,510  | —       | 6 1     |
| 10        | Liverpool ... A                           | 53,268     | 51,236  | 1 1     | 1 2     |
| 14        | Wolverhampton Wanderers ... H             | 36,476     | 35,853  | 2 0     | 3 2     |
| 17        | Manchester United ... H                   | 62,942     | 63,052  | 1 2     | 0 0     |
| 21        | Leicester City ... A                      | 24,925     | 30,076  | 0 1     | 0 3     |
| 24        | Queen's Park Rangers ... A                | —          | 19,716  | —       | 1 1     |
| 27        | Arsenal ... A                             | 41,567     | 40,767  | 0 1     | 4 1     |
| 31        | Ipswich Town ... H                        | —          | 31,303  | —       | 1 1     |
| Sept. 3   | Huddersfield Town (League Cup 2) ... A    | —          | 23,426  | —       | 0 0     |
| 7         | Stoke City ... A                          | 22,426     | 22,015  | 0 3     | 0 1     |
| 11        | Huddersfield T. (League Cup Replay) ... H | —          | 26,948  | —       | 4 0     |
| 14        | Southampton ... H                         | 22,002     | 29,031  | 4 2     | 1 0     |
| 18        | Fenerbahce S.K. (European C.C.C.) ... H   | —          | 38,787  | —       | 0 0     |
| 21        | Sunderland ... A                          | 27,885     | 31,687  | 0 1     | 4 0     |
| 25        | Blackpool (League Cup 3) ... A            | 23,405     | 23,795  | 2 0     | 0 1     |
| 28        | Leeds United ... H                        | 39,713     | 46,431  | 1 0     | 3 1     |
| Oct. 2    | Fenerbahce S.K. (European C.C.C.) ... A   | —          | —       | —       | 0 2     |
| 5         | Everton ... A                             | 47,144     | 55,649  | 1 1     | 1 2     |
| 9         | Arsenal ... H                             | 42,392     | 33,830  | 1 1     | 1 1     |
| 12        | Tottenham Hotspur ... H                   | 35,792     | 38,019  | 4 1     | 1 0     |
| 19        | Coventry City ... A                       | 34,578     | 36,670  | 3 0     | 4 1     |
| 26        | Nottingham Forest ... H                   | 29,547     | 33,937  | 2 0     | 3 3     |
| 30        | A.F.C. Ajax ... H                         | —          | 16,064  | —       | 3 0     |
| Nov. 2    | Chelsea ... A                             | 37,171     | 40,700  | 0 1     | 0 2     |
| 9         | Sheffield Wednesday ... H                 | 32,999     | 24,278  | 1 0     | 0 1     |
| 16        | Newcastle United ... A                    | 46,492     | 36,400  | 4 3     | 0 1     |
| 23        | West Bromwich Albion ... H                | 45,754     | 24,667  | 0 2     | 5 1     |
| 30        | West Ham United ... A                     | 25,595     | 33,082  | 3 2     | 1 2     |
| Dec. 7    | Burnley ... H                             | 37,098     | 31,009  | 4 2     | 7 0     |
| 14        | Tottenham Hotspur ... A                   | 51,242     | 28,462  | 3 1     | 1 1     |
| 21        | Coventry City ... H                       | 33,310     | 27,700  | 3 1     | 4 2     |
| 26        | Everton ... H                             | 37,786     | 53,549  | 2 0     | 1 3     |
| Jan. 4    | Luton Town (F.A. Cup 3) ... H             | —          | —       | —       | 1 0     |
| 11        | Chelsea ... H                             | 47,132     | —       | 1 1     | —       |
| 18        | Sheffield Wednesday ... A                 | 38,207     | —       | —       | —       |
| 25        | F.A. Cup 4 ... A                          | —          | —       | —       | —       |
| Feb. 1    | Newcastle United ... H                    | 29,978     | —       | 2 0     | —       |
| 8         | West Bromwich Albion (F.A. Cup 5) ... A   | 44,897     | —       | 2 3     | —       |
| 15        | West Ham United ... H                     | 38,755     | —       | 3 0     | —       |
| 22        | Burnley ... A                             | 23,486     | —       | 1 0     | —       |
|           | To be arranged ... A                      | —          | —       | —       | —       |
|           | Nottingham Forest ... A                   | 39,581     | —       | 3 0     | —       |

### LEAGUE DIVISION I (Including 28th December)

| Goals                   | Goals |    |    |    |    |    |    |
|-------------------------|-------|----|----|----|----|----|----|
|                         | P     | W  | D  | L  | F  | A  | P  |
| Liverpool ...           | 26    | 17 | 5  | 4  | 45 | 15 | 39 |
| Leeds United ...        | 24    | 15 | 7  | 2  | 40 | 20 | 37 |
| Arsenal ...             | 24    | 14 | 7  | 3  | 32 | 13 | 35 |
| Everton ...             | 25    | 14 | 7  | 4  | 53 | 23 | 35 |
| Chelsea ...             | 25    | 11 | 8  | 6  | 46 | 28 | 30 |
| West Ham United ...     | 25    | 9  | 10 | 6  | 46 | 31 | 28 |
| Sheffield Wednesday ... | 25    | 9  | 10 | 6  | 32 | 26 | 28 |
| Burnley ...             | 26    | 11 | 5  | 10 | 34 | 51 | 27 |
| West Brom Albion ...    | 25    | 10 | 6  | 9  | 39 | 43 | 26 |
| Southampton ...         | 27    | 8  | 9  | 10 | 33 | 38 | 25 |
| Tottenham Hotspur ...   | 23    | 8  | 8  | 7  | 39 | 33 | 24 |
| Sunderland ...          | 25    | 8  | 8  | 9  | 29 | 41 | 24 |
| Newcastle United ...    | 25    | 7  | 9  | 9  | 34 | 36 | 23 |
| Manchester City ...     | 25    | 7  | 8  | 10 | 43 | 36 | 22 |
| Wolverhampton W. ...    | 24    | 7  | 8  | 9  | 26 | 29 | 22 |
| Manchester United ...   | 24    | 7  | 8  | 9  | 26 | 33 | 22 |
| Stoke City ...          | 25    | 7  | 7  | 11 | 24 | 33 | 21 |
| Ipswich Town ...        | 25    | 7  | 5  | 13 | 36 | 42 | 19 |
| Nottingham Forest ...   | 23    | 3  | 10 | 10 | 30 | 39 | 16 |
| Leicester City ...      | 25    | 4  | 7  | 14 | 23 | 50 | 15 |
| Coventry City ...       | 24    | 4  | 6  | 14 | 22 | 40 | 14 |
| Queens Park Rangers ... | 24    | 3  | 6  | 15 | 25 | 57 | 12 |

### CENTRAL LEAGUE (Including 28th December)

| Goals                   | Goals |    |    |    |    |    |    |
|-------------------------|-------|----|----|----|----|----|----|
|                         | P     | W  | D  | L  | F  | A  | P  |
| Manchester United ...   | 24    | 16 | 6  | 2  | 48 | 23 | 38 |
| Liverpool ...           | 23    | 16 | 5  | 4  | 45 | 13 | 37 |
| Newcastle United ...    | 25    | 13 | 4  | 8  | 36 | 23 | 30 |
| Burnley ...             | 27    | 11 | 8  | 8  | 39 | 28 | 29 |
| West Brom Albion ...    | 23    | 12 | 5  | 6  | 23 | 25 | 26 |
| Everton ...             | 24    | 11 | 4  | 9  | 34 | 33 | 25 |
| Wolverhampton W. ...    | 24    | 9  | 7  | 8  | 34 | 33 | 25 |
| Bury ...                | 24    | 11 | 3  | 10 | 33 | 38 | 25 |
| Nottingham Forest ...   | 22    | 8  | 6  | 7  | 33 | 33 | 24 |
| Stoke City ...          | 22    | 8  | 6  | 7  | 25 | 20 | 24 |
| Sheffield United ...    | 24    | 8  | 7  | 9  | 41 | 28 | 23 |
| Leeds United ...        | 24    | 7  | 9  | 8  | 21 | 29 | 23 |
| Manchester City ...     | 22    | 11 | 0  | 11 | 35 | 33 | 22 |
| Sheffield Wednesday ... | 24    | 8  | 6  | 10 | 29 | 29 | 22 |
| Preston North End ...   | 22    | 8  | 6  | 8  | 27 | 27 | 22 |
| Blackpool ...           | 25    | 7  | 7  | 11 | 45 | 49 | 21 |
| Huddersfield Town ...   | 23    | 7  | 12 | 12 | 31 | 43 | 20 |
| Aston Villa ...         | 23    | 7  | 6  | 10 | 28 | 40 | 20 |
| Bolton Wanderers ...    | 23    | 7  | 3  | 13 | 24 | 42 | 17 |
| Derby County ...        | 23    | 3  | 10 | 10 | 18 | 30 | 16 |
| Blackburn Rovers ...    | 23    | 5  | 5  | 13 | 31 | 47 | 15 |
| Coventry City ...       | 22    | 1  | 7  | 14 | 15 | 39 | 9  |



IT'S

# GROVES

## DRAUGHT BEER

IN OUR

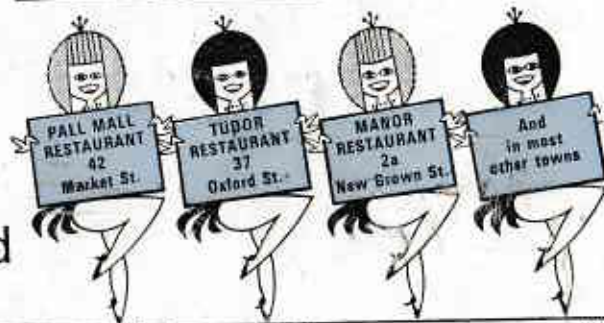
# SOCIAL CLUB!!

GROVES & WHITNALL LTD., REGENT ROAD BREWERY, SALFORD  
(A MEMBER OF THE GREENALL WHITLEY GROUP)

# UCP

MANCHESTER RESTAURANTS

For a really good meal



N. 768

## FINGLAND'S

GARAGE & COACH STATION  
261 WILMSLOW ROAD  
RUSHOLME, MANCHESTER 14  
061-224 2894

## SHEFFIELD W. v CITY

SATURDAY, 18th JANUARY

Coaches leave } Agents 11.30 a.m.  
Depot 12.00 noon  
FARE 8/6

8

# CITY

Shirts: Sky Blue  
Shorts: White

Scorer

- 1 DOWD, Harry
- 2 PARDOE, Glyn
- 3 MANN, Arthur
- 4 DOYLE, Mike
- 5 BOOTH, Tommy
- 6 OAKES, Alan
- 7 LEE, Francis <sup>1 p 27 m</sup>
- 8 BELL, Colin
- 9 ~~SUMMERBEE, Mike~~ <sup>OWEN 8082P</sup>
- 10 YOUNG, Neil
- 11 COLEMAN, Tony
- 12 S. ROWLES.



Referee: K. H. BURNS (Wordsley, Stourbridge)  
Linesman: Red Flag—J. W. D. WILKES (Solihull, Warwickshire)  
Linesman: Yellow Flag—C. L. NEWSOME (Wellington, Salop)

Today's pre-match entertainment is provided by the Burbage Silver Prize Band (Buxton) who will include in their programme of music:  
Selection: Black & White Minstrels; March—Pendine; Quick Step—Rhythmic Danube;  
Novelty—Hello Dolly (City); Melodies from Nurseryland.

### FORTHCOMING MATCHES AT MAINE ROAD

|                       |                |                   |               |
|-----------------------|----------------|-------------------|---------------|
| Saturday 11th January | Chelsea        | LEAGUE DIVISION 1 | K.O. 3.0 p.m. |
| Saturday 18th January | Newcastle Utd. | CENTRAL LEAGUE    | K.O. 3.0 p.m. |

# LUTON TOWN

Shirts: White  
Shorts: Black

Scorer

- 1 DAVIE, Sandy
- 2 DOUGAN, Max
- 3 BANNISTER, Jack
- 4 SLOUGH, Alan
- 5 BRANSTON, Terry
- 6 MOORE, John
- 7 FRENCH, Graham
- 8 ~~LEWIS, Brian~~ <sup>M. DE R. - 1st 25 mins</sup>
- 9 ALLEN, Keith
- 10 RIOCH, Bruce
- 11 HARRISON, Mike
- 12 M. DE R.

A Champion  
City . . . . .

deserves a

## CHAMPION NEWSPAPER!

Top-selling evening  
paper in Provinces



9

## SPOTLIGHT ON OUR VISITORS

# LUTON TOWN

By TONY PULLEIN

Nostalgic Cup memories for Luton Town just now. It is exactly ten seasons since they won their way through to Wembley to enjoy the greatest occasion in the club's history, when they were beaten 2-1 by Nottingham Forest's ten men.

Twelve months later they were relegated to the Second Division; in 1963 they fell into Division Three. By 1965 they had suffered the ultimate indignity of demotion to the Fourth Division.

But now, after three years in the basement, the Hatters are on the climb again. Last season they were Fourth Division champions and they cannot yet be ruled out of the promotion race for a Second Division spot this season.

To City fans, though, this afternoon's meeting gives us the opportunity to avenge perhaps the greatest travesty of justice in F.A. Cup history. You will hardly need reminding of that fourth round tie at Luton on 28th January, 1961. City led 6-2, Denis Law scoring all six, when the game was abandoned in the 69th minute. We replayed the following Wednesday and Luton won 3-1. Denis Law scored again to become the only man ever to score seven goals in an F.A. Cup tie proper and finish on the losing side.

That was the last time Luton defeated a First Division club in this competition. And since then they have not progressed beyond the third round.

But the Luton of today is a vastly different proposition to the Luton of three or four years ago. We expect a mighty tough match this afternoon and we shall respect the Third Division men as if they were a side riding high in the First Division. For several of their players have been sought by top clubs.

Inside-forward Bruce Rioch has been a constant target for ambitious clubs and we

have devoted a special article to this remarkable character who was turned down by three famous clubs who would pay £70,000 to get him back again!

Brian Lewis, who made a name for himself as a strong and stylish half-back, has become Luton's top goalscorer. He first hit the eye in Crystal Palace's Fourth Division side in 1960/61. Three years later he was snapped up by Portsmouth where he developed rapidly. He moved to Coventry in January 1967, helped them into the First Division and then, this summer, decided to join Luton's crusade for better things.

Laurie Sheffield, that man of many clubs and many goals, has not enjoyed a regular place recently. Laurie kicked-off with Bristol Rovers, did not make their first-team, so they asked him to find another club. At that time, in 1960, he had difficulty finding one! But Barry Town came up trumps and gave him the chance to regain his confidence in the Southern League for a couple of seasons until Newport County signed him and gave him the League football he was aiming for. Since then he has performed with Doncaster Rovers, Norwich City, Rocherham and Oldham. He is in his first season with Luton.

Graham French was another player to write himself off as a failure after he had been introduced to Shrewsbury's League team at the age of 17 and then won England youth honours. Swindon paid a five-figure transfer fee for him in 1963 but he never hit it off with the Wiltshire side, making but five League appearances for them. Disappointed, he joined non-League Wellington Town. Luton saw his potential and brought him back into the League circle in 1965.

Ian Buxton arrived from Derby County at the beginning of last season. Turning professional for the Rams in 1959, Ian took some five years before he held a regular first-team place for the Second Division

club but when he left he looked back on over 150 senior appearances for them.

Mike Harrison won three England under-23 caps when he was with Chelsea who developed him in their junior sides. After leaving Stamford Bridge, Mike signed for Blackburn Rovers but he spent last season with Plymouth Argyle. Luton secured his signature in June last year.

Former England Youth International Ray Whittaker learned his game with Arsenal, did not get a League game with the Gunners but in just over five years at Luton he has almost topped the 200 mark in League games. Morris Stevenson, one of Luton's newest players, came from Greenock Morton.

Two other new arrivals this season are Sandy Davie, the goalkeeper they signed from Dundee United, and Jack Bannister, a half-back with a wealth of experience. West Bromwich launched him in League soccer in 1959/60 but he never really made much impression at the Hawthorns. After a season at Scunthorpe, which ended with his being given a free transfer, he must have thought his prospects of making the grade had been exhausted. But at Crystal Palace he found a new lease of

life, making over 100 League appearances in three years before signing for Luton in October last.

Terry Branston has chalked up over 300 League matches, most of them for Northampton with whom he rose from the Fourth to the First Division. As the Cobblers slid back in almost double-quick time, Terry was signed by Luton in 1967 and last season he was ever-present in their promotion team.

Keith Allen had hoped to do well with Portsmouth but did not make the first team and it was only after moving to Grimsby Town that he made his League debut. His stay at Blundell Park lasted only one season, Stockport County taking him on strength in 1965. He moved to Luton mid-way through last season.

Bill McDerment and Max Dougan were both signed from Leicester City where first-team chances were rare. Alan Slough, one of Luton's own discoveries, came into the team in 1965/66 and won a regular place the following season.

Luton, in the third round for the first time in four years, progressed to this stage by defeating Ware Town 6-1 and Gillingham 3-1 in the previous rounds at Kenilworth Road.



BRUCE RIOCH was turned down by three famous First Division clubs after trials and all must be regretting their errors of judgment now. At Chelsea he scored four goals in his trial match but even that feat did not impress the Stamford Bridge staff. Determined to succeed, Rioch went to Arsenal and Tottenham but did not succeed.

Never mind. A Luton scout saw something in him and he had another trial at Kenilworth Road in July 1963. This time he got the answer he had waited for and, almost immediately, signed as an apprentice professional.

Bruce made his senior debut in a League Cup tie against Port Vale in 1964/65 and followed this up with a handful of League appearances. Half way through the following season he won a regular place and for the past two seasons he has been the club's top scorer.

As a schoolboy, Bruce played for Cambridge Boys when he was 12 and was selected for the London Boys XI. He took part in an international schoolboys trial game, turning out for The Rest against England but he did not win a cap.

Over the past 12 months Luton have received many tempting offers for Rioch but, now they have set their sights firmly on a return to the top flight, they naturally are not anxious to lose the sort of player who can prove such a valuable asset.

Rioch is a genuine all-round attacker. Though his role over the past two years has been primarily that of a striker, he started out as a schemer. According to reports, he excels in both departments.

### BRUCE RIOCH'S LEAGUE CAREER

|            | Appearances | Goals |
|------------|-------------|-------|
| Luton Town | 1964/65     | 11 —  |
|            | 1965/66     | 19 3  |
|            | 1966/67     | 37 10 |
|            | 1967/68     | 44 24 |
|            | 111         | 37    |

**Belle Vue**  
MANCHESTER  
40th INTERNATIONAL  
**Circus**

**ALLEZ OUP!**

**BETTER BOOK NOW!**

**NOW to FEBRUARY 8th**  
(Except Sundays)

Mondays, Tuesdays and Thursdays, 6th January to 6th February at 5.0 p.m. only. Wednesdays and Fridays, 8th January to 7th February at 5.0 p.m. and 7.45 p.m. Saturdays, 4th, 11th, 18th, 25th January, 1st & 8th February at 10.30 a.m., 1.30 p.m., 4.30 p.m., 7.30 p.m.

**Book Now in Advance!**

Adults: 14/-, 10/6, 7/6 and 5/- Children: (15 and under) 10/-, 8/-, 6/- and 4/- All reserved. Belle Vue (EAS. 2927) Lewis's, Forsyths, CWS (Balloon Street), Midland Hotel. Special party discount.

other attractions

**ZOO PARK** OPEN DAILY 10 a.m.

**DANCING** NIGHTLY 7 p.m. Olde Tyme Tuesdays and Thursdays

**TEN-PIN BOWLING**

**TOP TEN CLUB** (Members only Sundays 7 p.m.)

32 Lanes open Daily 10 a.m.

LICENSED CATERING

## SHEFFIELD WEDNESDAY v CITY

SATURDAY, 18th JANUARY

# WADSLEY BRIDGE 15/-

Manchester Piccadilly depart 12.52

Return Wadsley Bridge - 17.30

BOOK IN ADVANCE NO HALF FARES



## CITY'S GOAL IN SEQUENCE v EVERTON



Above—'keeper West makes a brilliant save from Neil Young but the ball (below) falls free and Colin Bell scores, pegging back the two goal lead that the Merseysiders quickly built up.

Photos: Wm. Bradley



## Introducing ALEC STOCK, Luton's Manager

Lest we should be lured into the danger of believing we have an easy task this afternoon, let us recall two famous F.A. Cup results—Yeovil 3 Bury 1, Yeovil 2 Sunderland 1.

Those are sensational results older fans will never forget for, whatever our personal affiliations of 1948/49, we all became fans of the tiny little Somerset team which, backed by the psychological advantage of its famous slope, battled its way into the fifth round of the F.A. Cup. The man largely responsible for that success, and for making capital of that slope, is at Maine Road this afternoon—ALEC STOCK.

Alec was Yeovil's player-manager in those days and his achievements at The Huish set him on the road to a most successful managerial career. In August 1949 he was appointed manager of Leyton Orient and built the side which won promotion to Division II in 1956.

He moved to Arsenal as assistant-manager

in 1956 but ended his brief stay by returning to Orient within a couple of months. The challenge of Italian soccer was laid before him and he took control of Roma F.C. but once again returned to Leyton Orient when they were in trouble.

Alec Stock finally severed his connections with Orient in March 1959 and three months later took up his position with Queen's Park Rangers, whose successes under his able command were phenomenal. They won the League Cup and rose from the Third to the First Division. It is not generally known that Mr. Stock was a highly successful inside-forward with Rangers before the war and he thus provides one of a few quite rare cases of a manager winning honours with a club he previously served as player.

It was one of the biggest shocks of the season when Queen's Park Rangers dispensed with his services in November. But within weeks he was back in the game—as Luton Town's manager.

## Your Letters . . . and Our Guest

### HALF IS BETTER THAN NONE

Dear Sir: I am writing, I feel sure, on behalf of many Manchester City supporters who are interested in the half-time scores of the games of the other local teams. At the moment we are furnished with the results of Manchester United, Bolton Wanderers and Bury's games. However, two others figure highly in local football—these are Stockport County and Oldham Athletic. I am sure that the people who watch Manchester City would be much more interested in these results than in results from Portsmouth, Cardiff, Oxford, Norwich etc. Yours faithfully, M. A. Wilson, 9 Brabyns Road, Gee Cross, Hyde SK 14 5RX.

*Our scoreboard, of course, serves two extremely important purposes. Firstly, the half-time scores from other grounds are shown and, secondly, it is the king-pin of "Free Scoreboard Scoop" competition which has proved to be very popular. We feature all First Division matches that kick-off at 3.00 p.m. most of the games in the Second Division that involve teams who are contesting the really tight promotion/relegation battles and the scores of the local Clubs. Stockport County are not usually included because they invariably play their home League matches on Friday nights and we haven't got the facilities to show other Third and Fourth Division Clubs. However, we do feel that 18 half-time scores are sufficient to keep you occupied at half-time when everyone is taking a respite and looking forward to the second half.*

A PLEA FROM GERMANY was made to us on a pretty Christmas card—it read: Merry Christmas I want you. Please you send address. I'm 13's old and I am girl out G.D.R. I hope address girl or boy 13-14 years old. Signed Christiane Kanyenbach, 1252 Grunheide/Mark, Karl-Marx Strasse, 23/DDR.

I am sure one of our young supporters would like to be Christiane's pen pal.

### HE'S OUR GUEST

The winner of the competition which was staged in the Manchester City players Championship Brochure, published last

August, is: GERARD JAMES HAY, 13 WINGATE DRIVE, DIDSBURY, MANCHESTER 20. Mr. Hay successfully identified the eight masked players on page 19 of the brochure and, in the opinion of the judges, gave the best reasons (in no more than 25 words) for the Club winning the Championship last season.

He wrote: "City won last season's Championship because of intelligent management; a verve and enthusiasm from inspired training by Allison, and tremendous fighting spirit and teamwork."

Answer to the competition: (a) Matthew Gray. (b) George Hannah. (c) Neil Young. (d) Jackie Plenderleith. (e) Robert Kennedy. (f) Clive Colbridge. (g) Derek Kevan. (h) Peter Dobing.

The judges' decision is final and no correspondence will be entered into.

Mr. Hay, and his chosen friend, will be guests of the Manchester City players at a game in the New Year. The prize is:

"The outright winner will be permitted to choose any senior match at Maine Road between January 2nd, 1969 and the official end of the 1968-69 season at which he/she would like to be the guest of the Manchester City players. The winner can select a League, European Cup, F.A. Cup or League Cup match to attend (with a friend) providing Manchester City are involved. If the choice is for a Saturday match, the winner and friend will be taken for lunch in Manchester, transported to Maine Road to meet the players, watch pre-match preparations, receive two tickets for the match, half-time refreshment room tickets and admission to the Board Room at full-time where the players will again be present. The winner and friend will then be taken for an evening meal in Manchester with the player of his/her choice. The match-ball from the day's game will also be autographed and presented as a souvenir of the occasion. If an evening match is selected, adjustments to the schedule will be made at the discretion of the Players' Committee."

Yours sincerely,

Tony Book.

### FLETCHERS ARMS XI (Tartan Bar) STOCKPORT ROAD DENTON

PHONE: 2483

Kick-Off 5.30

J. Walker

|                        |                |              |
|------------------------|----------------|--------------|
| Black                  | and            | White        |
| Spey Royal             | Standfast      | K. George IV |
| Black Label            |                | Dimple       |
| Ballantine             | White Horse    | Haig         |
| V                      |                |              |
| Teachers               | Dewars         | Glenfiddich  |
| Bells                  | Vat 69         |              |
| Jameson                | Long John      | Queen Anne   |
| White                  | and            | McKay        |
| Grand McNish           |                |              |
| Reserves: Chivas Regal | Crawford 3 & 5 |              |
| Star                   | Canadian Club  |              |

YOUR CITY HOUSE

Mine Host: IAN L. G. NIVEN

### CITY SOUVENIRS

Xmas Gifts now available

from

### NEW MANCHESTER PROGRAMME SHOP

137 Upper Lloyd Street,  
Manchester M14 4HS

Latest Items:

Black & White (New) team photo 2/-;  
Cufflinks 19/6 & 24/6; Xmas Cards (Manchester City) 9d. each, 12 for 7/6; Scarves 15/6, College Type 22/6; Teddy Bears 21/- & 35/-; Ties 17/6; Blazer Badges 6/6 & 8/6; Club Badges 4/6; Shoulder Bags 24/6; Necklets 9/11; Handkerchiefs (2) for 8/-.

OPEN DAILY—10 a.m. to 5.30 p.m.  
Xmas week 6.0 p.m. lists available on request. Telephone No. 226 3392.

The only distributor of OFFICIAL Manchester City Souvenirs other than the Souvenir Shop.

## ROY CLARKE

LIMITED

(Manchester City F.C. & Wales)

### SPORTS OUTFITTERS

MAIN SUPPLIER TO ALL LEADING CLUBS

Repair Service for all types of Sports Equipment

BE WELL EQUIPPED FOR THE CURRENT SEASON

FULL RANGE OF FOOTBALL KIT WITH PERSONAL ATTENTION

255 WILMSLOW ROAD  
RUSHOLME, MANCHESTER 14

Telephone: 061-224 1672

Only ten minutes from ground

## MANCHESTER GARAGES LTD

MAIN FORD DEALERS



Famous for meticulously prepared

**GUARANTEED  
USED CARS**

Over 100 cars to choose from!

Head Office & Showrooms  
OXFORD ROAD · MANCHESTER 13  
Tel: Rusholme 7301  
GREEN LANE · WILMSLOW  
Tel: Wilmslow 22224

# HALF-TIME SCOREBOARD

|                      |     |                 |                       |
|----------------------|-----|-----------------|-----------------------|
| ..... EXETER CITY    | X A | A I K           | K HULL CITY           |
| ..... MANCHESTER U.  | X B | B 2 L           | ..... WOLVES 2        |
| ..... ASTON VILLA    | X B | C X M           | L LIVERPOOL           |
| ..... Q.P.R.         | X C | D X N           | ..... DONCASTER R. X  |
| ..... BARNLEY        | X C | E 2 O           | M NEWCASTLE U.        |
| ..... LEICESTER CITY | X D | F I P           | ..... READING 1       |
| ..... BLACKBURN R.   | X D | G X Q           | N PRESTON N. E.       |
| ..... STOCKPORT C.   | X E | H I R           | ..... NOTTINGHAM F. X |
| ..... BURNLEY        | X E | J I S           | O SHEFFIELD W.        |
| ..... DERBY COUNTY   | X F | Printed by      | ..... LEEDS UNITED X  |
| ..... CARDIFF CITY   | X G | Briggs Bros.    | P SUNDERLAND          |
| ..... ARSENAL        | X G | (Silsden) Ltd., | ..... FULHAM 2        |
| ..... CHELSEA        | X H | Silsden.        | Q WEST BROM A.        |
| ..... CARLISLE U.    | X H | COPYRIGHT       | ..... NORWICH CITY 1  |
| ..... COVENTRY CITY  | X I |                 | R WEST HAM UTD.       |
| ..... BLACKPOOL      | X I |                 | ..... BRISTOL CITY X  |
| ..... EVERTON        | X J |                 | S YORK CITY           |
| ..... IPSWICH TOWN   | X J |                 | ..... STOKE CITY 2    |

## “FREE SCOREBOARD SCOOP” £200 PRIZE MONEY TO BE WON £200

|                 |      |   |  |
|-----------------|------|---|--|
| FIRST DIVIDEND  | £100 | 9 | CORRECT RESULTS IN ONE LINE (A to J or K to S) WINNERS SHARE £100.   |
| SECOND DIVIDEND | £75  | 8 | CORRECT RESULTS IN ONE LINE (A to J or K to S) WINNERS SHARE £75.  |
| THIRD DIVIDEND  | £25  | 6 | CORRECT DRAWS IN ONE LINE (A to J or K to S) WINNERS SHARE £25. (If not won £25 will be added to 2nd Dividend) |

### HOW TO ENTER!

- As a programme holder you are entitled to enter the competition free of charge.
- Complete the half-time scoreboard above, from the Scoreboard in the Ground, as at three-quarter time. (No results published elsewhere can be accepted).
- Check the results against the printed selection on your programme.
- If you have the correct results in one line, on either the left side, or the right side, register your claim to a prize, by sending your programme, name and address to the Development Association Office, Maine Road, Moss Side, Manchester 14, claims must be received by the first post on the Tuesday following the game.
- Prizes will only be paid to persons over 16 years of age.
- Prizes will be sent by post and lists of prizewinners will be exhibited in the Development Association Office, where the full set of rules are also exhibited.

Trademark Applied for