

SHREWSBURY TOWN

Football Club Ltd.

OFFICIAL PROGRAMME 9D



SEASON 1968—69

Wednesday, JANUARY 8th, 1969

THIRD DIVISION

**LUTON
TOWN**

kick-off 7-30 p.m.

Wem Best

Bitter

A GREENALL WHITLEY BREW

We cool the Midlands and Wales

Specialists in all types of

REFRIGERATION & SHOPFITTINGS

Frozen Food Cabinets, Refrigerated Display, Coldrooms for Meat, Fish, Provisions, Ice-cream Cabinets, Beer and Bottle Cooling, Ice Makers, etc. Wall Display Shelving, Gondola Units, Dump Display, Price Tickets, etc.

Trade inquiries invited for Domestic and Farm Freeze Cabinets

⊙ Day and Night Service ⊙

REFRIGERATION WEST MIDLANDS (Shopfittings) Ltd.

Lancaster Road, Harlescott Grange.

Telephone: Shrewsbury 51262 and at Llandudno 75122

Owen's Fish Restaurants

THE FINEST FISH AND CHIPS —

WITH THE FASTEST SERVICE IN THE TOWN

OPEN DAILY—11-30 a.m. - 2 p.m. and 4-30 p.m. - 11-30 p.m.

Seating accommodation for over 100.

Turn Left at Century Bingo Hall, look for Red Neon Sign.

36 ST. JULIAN'S FRIARS, SHREWSBURY.

Also at Oswestry.

Telephone 2832

SPORTS AND GAMES (SHREWSBURY) LTD.

3 CASTLE GATES, SHREWSBURY Phone 3698

For the best Sports Equipment in the Midlands

HIGH QUALITY, EXCELLENT SERVICE AND HUGE STOCKS

Only ½ minute from the Station and Smithfield Car Park

SHREWSBURY TOWN FOOTBALL CLUB LTD.

GAY MEADOW, SHREWSBURY

Tel. 6068

President : SYDNEY YATES

Chairman : H. S. YATES

Directors :

L. TUDOR OWEN (Vice Chairman)

C. W. EDWARDS, F. C. G. FRY,

A. C. WILLIAMS, K. R. WOODHOUSE

Manager : H. GREGG

Secretary : L. E. RIMMER

Promotions Officer : I. HOOKWAY

Hon. Medical Officer :

Dr. J. MILLARD BRYSON

FROM THE MANAGER'S CHAIR



IT would be foolish of me to pretend that I am not worried about the position Shrewsbury Town are in as we enter the New Year—bottom but one of Division Three.

Of course I am a worried man. All managers worry—that is what we are paid for. But even in my darkest moments, the thought of relegation has never been in my mind.

I recognise that there is a lot of work to be done by everyone at the Gay Meadow if we are to start climbing clear of danger, but I am confident that 1969 will bring a change for the better in our fortunes.

Even allowing for sickness, injury and loss of form I believe Shrewsbury have—with a couple of exceptions—maintained the standard of performance one normally associates with a team much more highly placed in the league.

What we have lacked, as everyone must realise, is a player to knock in the chances that are being created. But for this deficiency our league placing would have been vastly different to what it is.

Our single goal defeats at Rotherham and Barnsley underlined how narrow is the gap between success and failure. Had we possessed a chance-taker we would have come away with at least a point from both grounds, and these matches were typical of so many others this season.

I have lost count of the number of games we have lost by the odd goal, simply because we have lacked someone up front who is capable of turning our chances to account.

What makes it so frustrating from my point of view is that my search for a player to end the goal famine has so far drawn a blank. I must have watched well over 20 League games in the last two months in my search for a striker, and in addition to that I have had dozens of reports on other players who have been given the once over by the Town's scouting staff.

One player to come up to my requirements was Jim Conde, who has scored 30 goals this season for Northern Premier League club Bangor City. After watching him for the second time last Saturday I put in a bid which I considered a fair valuation. But I was told by the Bangor officials that they were not prepared to consider selling Conde until they have played Wrexham in the Welsh Cup on January 15th. I wanted him immediately. Nothing is certain in football, but the possibility of a deal appears to have fallen through because of Bangor's stipulation.

So the search continues. The money is still available for the right man, and I shall not rest until I get him. Until he is found I have no alternative but to improvise with the present staff.

Finally, I would like to comment briefly on suggestions that Shrewsbury set out to play negative football and that the standard of entertainment has fallen as a result. Obviously there are times away from home when a team is forced to place emphasis on defence, but never have we set out with the deliberate intention of playing negatively. I have encouraged every member of the side to consider himself a potential goal-scorer, and the fact that Alf Wood, Peter Dolby, and Geoff Fellows have all got among the goals is surely proof that our policy has been one of attack rather than defence. As our league position improves, I hope this will become even more marked.

Yours sincerely,

HARRY GREGG.

OUR VISITORS

Sandy Davie. Former Scottish Under-23 keeper who cost Luton an £8,000 fee when he was signed from Dundee United two months ago. Has been in brilliant form since he joined the Hatters, and turned in a "blinder" in the F.A. Cup game against Manchester City last Saturday.

Max Dougan. Another Scot, for whom Luton paid £7,000 when he moved from Leicester City. Won Scottish amateur international caps with his first club, Queens Park.

Jack Bannister. Made his Luton debut in the same game as goalkeeper Davie, having been signed from Crystal Palace for £8,000. Was formerly with West Bromwich Albion.

Alan Slough. A local product, who was an amateur and apprentice with Luton before signing as a full-timer. In his early days he was a full-back, but now plays extremely well in either wing half berth.

Terry Branston. Last season was a memorable one for this very experienced defender, for not only was he a member of a promotion winning team for the fourth time during his career but fulfilled his ambition of making the full quota of League appearances. Born at Rugby, where he still lives, Branston spent nine seasons with Northampton Town, accompanying them in their rise from Division Four to the First Division.

John Moore. Generally considered to be one of the most improved players on Luton's books. Now in his fourth season at Luton, who stepped in to snap him up when Moore was given a free transfer by Motherwell.

Graham French. A player who needs no introduction to Shrewsbury supporters. It was at the Gay Meadow that Graham began his career and won several youth international caps for England. Transferred to Swindon for a big fee, he later played for Watford before going non-League with Wellington for a spell. Signed for Luton in October, 1965.

Brian Lewis. Cost Luton one of their biggest fees when he moved from Coventry City for £20,000 last summer, and has justified his price tag. Forms a dangerous spearhead with Rioch, and heads Luton's

scoring lists with 13 goals. Was formerly with Portsmouth.

Keith Allen. Signed from Stockport County in exchange for Derek Kevan, after spells with Portsmouth and Grimsby Town. Has scored seven goals this season.

Bruce Rioch. A very talented player whose scoring exploits have made him the idol of Kenilworth Road—and the target of many First Division clubs. A natural footballer, whose skill developed quickly last season when he headed the scoring charts. Born at Aldershot, but spent most of his schooldays at Luton and has been with the Town since he was 15.

Mike Harrison. Born at Ilford, Harrison began his career with Chelsea before moving on to Blackburn Rovers for a brief spell. Later joined Plymouth Argyle, who received a £7,000 when he moved on again to Luton.

Billy McDerment. Signed from Leicester City as a right back, but most of his appearances for Luton have been on the opposite flank. At one time last season he was almost the permanent substitute, and, in all, managed 20 first team appearances—which qualified him for a championship medal.

STAR LETTER

"I would like to congratulate the team and staff on the great display against Barrow, which brought two welcome points.

Peter Dolby's return made a world of difference, and young Pat Douglas is improving with every match. But it was essentially a great all-round effort from the team with everybody prepared to run for everything.

Every member of the side pulled his weight, and if the team keep up this form we should be out of trouble very soon.

Mr. M. H. Bolas,
17, Stanmore Drive,
Trench, near Wellington.

Mr. Bolas' letter, adjudged the best received, wins him two stand tickets. If you have any views on Shrewsbury Town then write to: The Programme Editor, Gay Meadow, Shrewsbury.



ANGLIA BUILDING SOCIETY
34, CASTLE STREET, SHREWSBURY

Assets exceed £150,000,000

SECRETARY'S CORNER



After our improved game against Barrow and courageous fights at Rotherham and Barnsley, where an 84th minute goal and a penalty sacrificed a point for us in each game, the resurgence of fighting spirit must give us due cause for optimism in our game tonight against Luton Town.

We trust you have wined and dined well over the Festive Season and that like ourselves are now looking forward to a rekindling of the Town's hopes and ambitions for 1969. This programme gives us an opportunity to wish you all a belated but sincere Happy New Year and we are sure that all true supporters will wish the Manager and his players a more successful time in the second half of the season.

Incidentally, the Tranmere Rovers match

on Saturday, 18th January will kick-off at 7-30 p.m. and the Torquay United match has still yet to be re-arranged. You will note on the fixture list page the complete re-arrangements of all the Floodlit League and Cup fixtures to date.

The Ball Gift tonight is given through the kindness of Mr. J. C. Gill, Managing Director of the Westbury Brick and Pipe Company Limited, Westbury, Nr. Shrewsbury. Mr. Gill has shown his kindness along with his associates in this direction previously, and we have pleasure in drawing attention to their telephone numbers, Halfway House 204 and Shrewsbury 51764, where this firm can be contacted if their type of business is of interest to you. We trust that we can repay the gesture of Mr. Gill and his firm by gathering two valuable points tonight with the Ball that they have so kindly given to us.

In welcoming Luton Town to the Gay Meadow this evening, we extend a special welcome to our former Youth International player, Graham French.

We gratefully acknowledge the assistance given by the Shropshire Star and Journal Ltd. in providing pictures for this Programme.

Telephone : 3651 (3 lines)

Established 1842

LIVESEY LIMITED

PRINTERS - LITHOGRAPHERS
BOOKBINDERS
COMMERCIAL STATIONERS

ST. JOHN'S HILL

::

SHREWSBURY

Every Friday

SHROPSHIRE JOURNAL

for your football news and comments

SHREWSBURY TOWN FOOTBALL SUPPORTERS' ASSOCIATION

require

AGENTS

For their various Competitions
GENEROUS BONUSSES AND COMMISSION

are paid and certain

PRIVILEGES ARE GIVEN

If you would like to know more about the competitions and the details of operating an Agency, please complete the slip below and bring or post it to the following address.

We pay over £400 in Prize Money Every Week !

PROMOTIONS OFFICE,
 GAY MEADOW, SHREWSBURY,

I would like particulars of your Pools, etc., with a view to becoming an Agent.

Name

Address

Date

Thirst division champions



POACHER BROWN ALE 1968-9

THRELFALLS

A WHITBREAD GROUP COMPANY

THIRD DIVISION FIXTURES

1968		THIRD DIVISION		F	A						
Aug.	10	Walsall	7968H	0	1	Dec.	14	Barrow	2211H	1	0
	14	Walsall Lge. Cup	9168A	0	2		21	Rotherham United	7218A	0	1
	17	Watford	9574A	0	2		26	Barnsley	11733A	0	1
	24	Crewe Alexandra	7532H	1	1		28	Torquay United	H		
	27	Bristol Rovers	78'0A	2	1	1969					
	31	Bournemouth & B.	7330A	0	2	Jan.	8	Luton Town	7.30	H	
Sept.	7	Plymouth Argyle	6035H	1	0		11	Orient	A		
	13	Hartlepoons United	5028A	0	0		18	Tranmere Rovers	7.30	H	
	16	Stockport County	7171A	3	4		25	Oldham Athletic	A		
	21	Reading	5769H	3	3	Feb.	1	Brighton & Hove A.	A		
	28	Swindon Town	12283A	0	3		8	Gillingham	3.15	H	
Oct.	5	Barnsley	4544H	0	0		15	Mansfield Town	A		
	9	Bristol Rovers	6209H	1	0		22	Southport	7.30	H	
	12	Barrow	5407A	1	2	Mar.	1	Walsall	A		
	19	Rotherham United	6658H	1	0		5	Luton Town	A		
	26	Torquay United	8132A	0	2		8	Watford	A		
Nov.	2	Orient	3401H	1	0		12	Brighton & Hove A.	H		
	5	Oldham Athletic	3425H	0	1		14	Crewe Alexandra	A		
	8	Tranmere Rovers	7508A	1	3		17	Southport	A		
	16	(2) Port Vale	5933H	1	1		22	Bournemouth & B.	H		
	18	(2) Replay Port Vale	8801A	1	3	Apr.	5	Swindon Town	A		
	23	Gillingham	5270A	1	4		7	Stockport County	H		
	30	Mansfield Town	2694H	1	1		8	Northampton Town	A		
							11	Reading	A		
							16	Northampton Town	H		
							19	Hartlepoons United	H		
								To arrange Torquay	H		

Copyright of the Football League Ltd., and not to be reproduced without permission.

THIRD DIVISION

	P.	W.	D.	L.	F.	A.	P.
Watford	23	13	6	4	31	13	32
Bournemouth	24	14	3	6	41	24	31
Stockport Co.	23	12	7	4	45	28	31
Swindon Town	21	13	3	5	32	16	29
Tranmere	24	13	3	8	38	33	29
Luton T.	22	12	3	7	36	20	27
Barrow	23	11	5	7	37	34	27
Torquay U.	24	10	5	9	32	26	25
Plymouth	25	9	7	9	26	28	25
Reading	23	9	6	8	36	28	24
Northampton	23	8	7	8	28	28	23
Southport	24	10	3	11	41	41	23
Rotherham	23	7	8	8	24	26	22
Crewe	24	8	6	10	32	38	22
Barnsley	24	7	8	9	27	35	22
Walsall	24	6	9	9	27	26	21
Mansfield T.	23	8	5	10	31	30	21
Bristol R.	23	8	5	10	36	40	21
Brighton	26	7	6	13	33	42	20
Orient	23	6	8	9	26	35	20
Hartlepool	24	5	10	9	21	39	20
Gillingham	24	7	5	12	32	40	19
SHREWSBURY TOWN	23	6	5	12	18	32	17
Oldham	22	4	3	15	16	44	11

NORTHERN FLOODLIT LEAGUE FIXTURES

1969		F	A
Jan.	15 Stockport ... League	H	-
	20 Barrow ... League	A	-
	29 Wrexham ... League	H	-
Feb.	12 Chester ... Cup	A	-
	19 Wigan ... Cup	A	-
	26 Wrexham ... Cup	H	-
Mar.	5 Barrow ... Cup	H	-
	19 Wigan ... League	H	-
	26 Barrow ... League	A	-
Apr.	14 Stockport ... League	H	-

NOTES AND JOTTINGS

WHILST the lack of fixtures for the First Team, through postponement, etc., has somewhat put senior activities into deep freeze, our Junior Team in the West Shropshire League have continued to impress and do well. They are at present top of the West Shropshire League, Division II, and scored their 50th League goal on Saturday. Leading scorer is Ron Burns with 24 goals in 12 League and Cup games, and the present side consists of eight Shrewsbury boys, three from other parts of Shropshire, with Ron Burns the sole outsider from the Wolverhampton area. In addition, the team are only aged 15 and 16 years and it does appear that our youth policy has got great potential for the future.

Whilst the main object of running Junior Teams is not to win Cups and Trophies, it is encouraging to think that whilst the boys are showing their paces with an eye on the future playing strength of the Culb, they can still produce satisfactory results, and in fact these boys have only lost two games out of 17 League and Cup games played. Their might and mentor as Trainer/Coach is, of course, Ron Manders, and a tremendous amount of help and training sessions is given to these boys by the Manager, and Trainer/Coaches Evans and Starkey. The emphasis as will be seen is on local talent as our Manager firmly believes that there is as much talent locally and around Shropshire as there is anywhere else.

13

SHREWSBURY TOWN F.C. — 1968/69

VOUCHER NUMBER THIRTEEN

Collect these Vouchers, they will be useful to you

13

GO TO TOWN... SUPPORT SHREWSBURY

**NEXT
HOME
GAMES**

Wednesday, January 15th. Floodlit League.
STOCKPORT COUNTY. Kick-off 7-30 p.m.
Saturday, January 18th. Third Division
TRANMERE ROVERS. Kick off 7-30 p.m.

PLEASE DO NOT TRESPASS ON THE PLAYING PITCH

Shrewsbury Town

TEAMS

Luton Town

All Blue

All White

1 JOHN PHILLIPS

1 SANDY DAVIE

2 TONY GREGORY

2 MAX DOUGAN

3 GEOFF FELLOWS

Referee

3 JACK BANNISTER

4 DAVE POUNTNEY

C. I. ROBINSON
Manchester

4 ALAN SLOUGH

5 ALF WOOD

Linesmen

5 TERRY BRANSTON

6 PETER DOLBY

Red Flag

6 JOHN MOORE

7 TREVOR MEREDITH

D. A. CROSHAN

7 GRAHAM FRENCH

8 GEORGE

Yellow Flag

8 BRIAN LEWIS

BOARDMAN

9 DENNIS HAWKINS

A. FERGUSON

9 KEITH ALLEN

10 PAT DOUGLAS

10 BRUCE RIOCH

11 JIMMY

Subject to Alteration

11 MIKE HARRISON

McLAUGHLIN

12 GRAHAM

12 BILLY McDERMENT

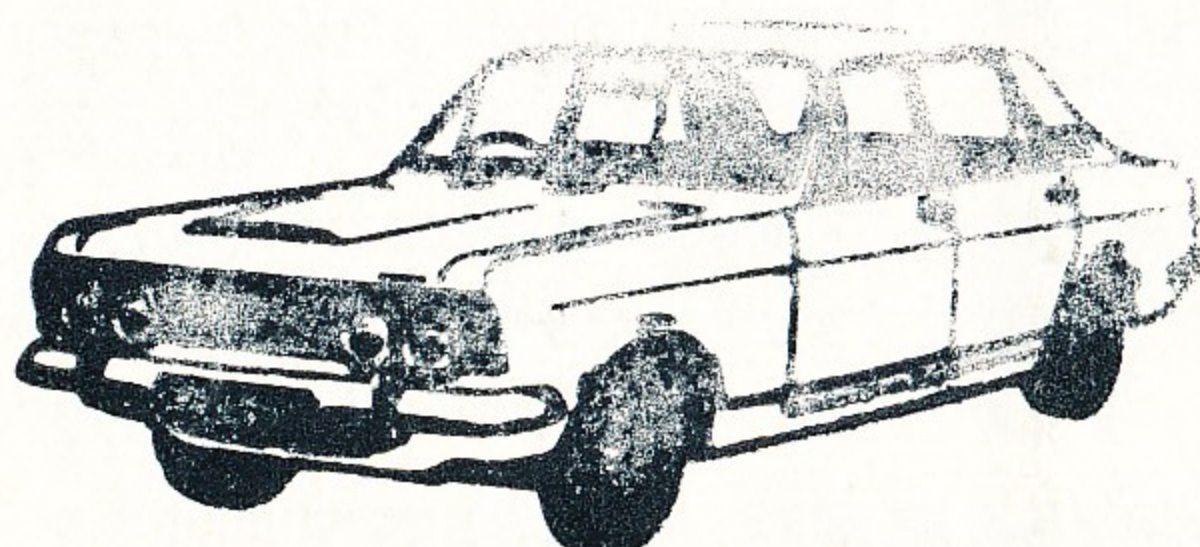
CLAPHAM

Teams are set out by numbers for identification only, not necessarily for positional reference.

KEEP IT CLEAN!

for

7/6



"It only takes 5 minutes"

CAR WASH

BARKER ST., SHREWSBURY

Telephone 3631

OPEN WEEKDAYS 8-30 a.m.—5-30 p.m.

SUNDAY 9-30 a.m.—1-30 p.m.

Furrows Limited
FORD DISTRIBUTORS