



334

# Crewe Alexandra

Football Club

at Gresty Road Ground

Crewe

VERSUS

**Luton Town**

Wednesday, 29th Jan.

Kick-off 7-30 p.m.

—The Football League—  
Division Three

**OFFICIAL**

**PROGRAMME I/-**

Season 1968-69 Issue No. 19

## The Birdcage Club & Casino

Castle Street, Nantwich Tel. 64550

Open Every Evening From 8-30 p.m. — Jazz, Pop, and  
Star Cabaret Every Thursday and Saturday Evening

<ul style="list-style-type: none"> <li>* Sports Goods</li> <li>* Camping Gear</li> <li>* Fishing Tackle</li> <li>* Guns &amp; Ammunition</li> <li>* Toys, etc.</li> </ul> <p><b>Allan Paterson</b>  251 Edleston Road, Crewe. Tel. 4094  26 Pillory Street, Nantwich. Tel. 65201</p>	<p><b>White Horse Inn</b>  PILLORY STREET,  NANTWICH,  CHESHIRE.</p>
<p>Coaches available for journeys of every description</p> <p><b>Roberts Coaches Ltd.</b>  Booking Office and Enquiries  84 MARKET STREET, CREWE  Telephone: Crewe 3879</p>	<p>For Your Early Morning Pinta  Ring Crewe 4455</p> <p><b>T. H. OWEN</b>  Brook Dairy (Redg.)  11 Ridgeway Street,  Crewe.  We supply  Fresh Cream, Farm Butter, Yogurt,  Buttermilk and all Dairy Produce</p>

**CREWE ALEXANDRA F.C.**

Telephone—Crewe 3014      Telegrams—"Alex Ground"


**Officials :**

Manager—E. Tagg      Secretary—G. F. Mosson  
Hon. Medical Officer—Dr. R. W. Eason

**Directors :**

Chairman—J. H. McHugh      R. Barnes      W. Dodd      H. Harrison  
Vice-Chairman—A. Houston      K. Potts      N. Rowlinson

**MATCH BALL**

<p>Tel. Nantwich 64085. Telegrams: "Wilhall"</p> <p><b>WILHALL ENGINEERING CO. LTD.</b>  Beam Bridge Works, Nantwich  Press Tools, Jigs, Fixtures and Guages  ENGINE RECONDITIONING</p>	<p><b>Market Street Motors Ltd.</b>  Station Garage AUDLEM. Tel. 448  <b>FORD DEALER</b>  Try us for your next Car  Always a good range of colour &amp; choice  A nice ride out, for a nice deal (Just over  5 miles from Nantwich)</p>
<p><b>Yellowstone Garage Limited</b>  Nantwich — Newcastle Road — Crewe  64220      Nantwich      67013</p> <p><b>FIAT MAIN DEALERS</b>  Most reliable car on the road  and the most economical</p>	<p>Hire a  Coach  from</p> <p><b>Crosville</b> </p> <p>Very reasonable rates  Very reliable service  Very comfortable coaches</p> <p><b>Crosville Motor Services Ltd.</b>  BUS STATION — CREWE 2256</p>

**Alex v. Luton Town**  
**THIRD DIVISION**  
**Wednesday, 29th January, 1969**  
**at Gresty Road Ground, Crewe. Kick-off 7-30 p.m.**

*The Secretary writes . . .*

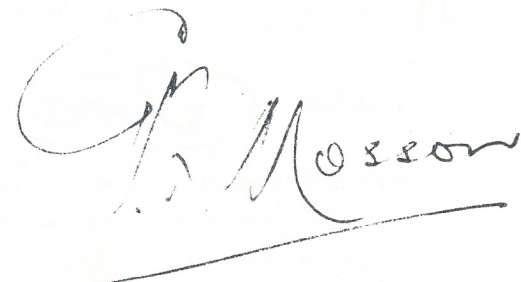
You will no doubt have noticed from the local press, the trouble we had with one or two of the younger element at our last home game resulting in at least three of them being forcibly ejected from the ground.

The ringleader in the first incident was a young man from Biddulph and wore Stoke City's colours, which are of course, similar to our own. Later, in my office, another young man was brought in by the police and from his attitude no doubt he thought he was somebody. He was extremely rude and one of the type that is very brave in a crowd. This one was, unfortunately, a Crewe supporter and had been in quite a rumpus with some youthful supporter from Barnsley.

Let me say at once that he was a very fortunate young man in that he was given police protection otherwise things would have gone very badly for him as the Barnsley supporters were waiting enmasse outside the ground for his re-appearance.

Let me warn him and others who have any thoughts of creating any disturbance whatsoever, that from now on very severe action will be taken and everyone apprehended will be taken to Court and charged.

As I have said before, we will not tolerate hooliganism at Crewe when I have observed through long experience that in the main and especially our Junior Supporters, are the best behaved crowd in the football world and we certainly cannot allow our own regular supporters to be upset by these "High and Mighty Hooligans" who are very big and brave in a crowd but whimper like a cur when trapped on their own.



The teams which have been on duty since our last issue:-

v. BARNESLEY - Home

Mailey, Lowry, Leigh, Turner, Stott, Gannon, Ratcliffe, McHale, Hollett,  
Curley, Tarbuck. Inglis substituted for Turner.  
Half-time 0-3 Full-time 1-4 Scorer - Hollett.

v. BOLTON 'A' - Away

Curran, Norton, Bainham, Dover, Lilley, Miller, Newton, Marley, Emmerson,  
Naggs, Spencer.  
Half-time 1-0 Full-time 6-0 Scorers - Marley, Naggs,  
Newton 2, Emmerson 2.

v. STOCKPORT. Floodlit League - Home

Curran, Norton, Arnold, Dover, Barnes, Miller, Marley, Bradshaw, Emmerson,  
Inglis, Spencer. Bainham substituted for Marley.  
Half-time 1-0 Full-time 2-0 Scorer - Inglis 2.

v. BRIGHTON - Away.

Mailey, Lowry, Leigh, Stott, Barnes, Gannon, Ratcliffe, McHale, Hollett,  
Inglis, Bradshaw.  
Half-time 0-2 Full-time 1-3 Scorer - Bradshaw.

v. MANCHESTER UNITED 'A' - Home

Curran, Norton, Bainham, Arnold, Lilley, Miller, Newton, Dover, Emmerson,  
Marley, Spencer.  
Half-time 1-0 Full-time 2-0 Scorers - Spencer, Marley.

**Forthcoming Games at Gresty Road**

- Saturday, 1st February. Lancs. League v. LIVERPOOL 'A'. Kick-off 3-00 p. m.
- Saturday, 8th February. Third Division v. SOUTHPORT. Kick-off 3-00 p. m.
- Saturday, 15th February. Lancs. League v. BURNLEY 'A'. Kick-off 3-00 p. m.
- Saturday, 22nd February. Third Division v. GILLINGHAM. Kick-off 3-00 p. m.

**STEWART STREET MOTORS**

WRINEHILL. Nr. CREWE.

Tel. Betley 300

Night, Phone Crewe 3688

SALES



SERVICE

Always large stock of all models for immediate delivery

Good allowance on your part exchange.

Open seven days a week 8-0 a.m. to 10-0 p.m.

**League Division Three**

	P	W	D	L	F	A	W	D	L	F	A	Pts
Watford	25	7	4	2	14	4	7	3	2	22	9	35
Brnemth	27	13	0	2	31	6	2	4	6	13	18	34
Swindon	24	8	2	0	17	2	6	3	5	21	18	33
Stockprt	27	10	3	2	39	18	2	6	4	9	17	33
Tranmere	27	8	1	6	23	20	6	2	4	20	20	31
Luton	25	11	1	0	31	7	2	3	8	7	18	30
Torquay	27	9	2	2	23	7	3	4	7	13	20	30
Plymth	27	8	5	3	25	16	3	2	6	7	13	29
Reading	26	9	0	3	23	8	1	7	6	17	25	27
Barrow	25	7	4	2	22	15	4	1	7	17	26	27
Rotherm	27	7	3	3	19	11	2	5	7	12	18	26
Sthport	27	9	3	1	32	13	2	1	11	13	20	26
Nthmptn	27	5	5	4	19	19	4	3	6	10	13	26
Barnsley	26	7	4	2	20	11	2	4	7	12	25	26
Bristl R	25	7	3	2	23	15	2	3	8	16	27	24
Brightn	29	6	4	3	26	14	2	4	10	12	31	24
Walsall	26	5	5	1	19	7	2	4	9	9	20	23
Mansfd	25	7	3	2	20	9	1	4	8	12	22	23
Orient	25	6	5	1	18	10	1	4	8	12	27	23
Crewe	26	7	2	5	24	20	1	4	7	10	25	22
Hrtlpool	27	3	8	3	15	20	3	2	8	8	26	22
Gillingh	26	6	4	3	24	16	2	1	10	10	29	21
Shwsbrv	26	6	4	3	13	19	1	2	10	10	27	20
Oldham	26	3	3	7	13	19	1	2	10	6	32	13

**THIRD DIVISION MARKSMEN**

- 19 - Rogers (Swindon)
- 17 - Andrews (Southport)
- 16 - Mulvaney (Barrow)
- Atkins (Stockport)
- 15 - Yeo (Gillingham)
- 14 - K. Napier (Brighton)
- 12 - Lewis (Luton)
- Ledger (Mansfield)
- Collins (Reading)
- Stubbs (Torquay)
- Yardley (Tranmere)

**CREWE ALEX. MARKSMEN**

League: Curley 6, Regan 5, Wallace 5, Stott 3, McHale 3, Hollett 3, Tarbuck 2,  
Turner 1, Inglis 1, Leigh 1, Emmerson 1, Bradshaw 1, Opponents 2.

League Cup: Regan 2, McHale 1.

F.A. Cup: Hollett 2, Emmerson 1.

Lancashire League: Emmerson 9, Inglis 7, Marley 4, Spencer 3, Newton 3,  
Arnold 2, Norton 2, Smith 1, Jones G.R. 1, Tarbuck 1,  
Lockett 1, Curley 1, Naggs 1.

Floodlit League: Inglis 8, Emmerson 3, Spencer 3, Turner 1, Curran 1, Arnold 1.

Friendlies: Emmerson 3, Regan 2, Wallace 2, Curley 1, Inglis 1, Tarbuck 1.

**Just for the Record**

Where the goals have been scored:

Attendances: Seventeen Games.

Railway End - Crewe 18 Opponents 15.

Aggregate: 85,920.

Gresty Road End - Crewe 9 Opponents 9.

Average: 5,054.

**Oakley Street Garage**

**NEW & QUALITY USED CARS**

**PRICE  
BROS  
(ESTATES)  
LTD.**

Invite you to inspect their FURNISHED

**Show Houses**

ON ALL LOCAL SITES For further details contact

Madeley House, 126 Nantwich Road  
Crewe. Tel. 55396/7

# James Rowlinson & Sons

(Willaston), Ltd. WILLASTON, NANTWICH

Tel. Crewe 67225, 67226, 67033, 67287, 67288, 67826

*English and Foreign Timber Importers  
Joinery Manufacturers and Packing Case Makers*

## Haslington Coaches

"Coach the Team and  
Junior Supporters"  
May we take you?  
Any Time - Anywhere  
Phone Crewe 2265 for Coach Hire

## HO WAH

Chinese Restaurant

8 Market Street, Crewe

Tel. 2529

Open daily 12 noon to 11-30 p.m.

## Will you be there ?

**Saturday, 1st February, 1969 Kick-off 3-00 p.m.**  
**OLDHAM ATHLETIC v. CREWE ALEXANDRA**

NAME OF GROUND - Boundary Park.

NEAREST STATION - Werneth.

PARKING AVAILABLE - Car Park for Several Hundred Cars.

<u>ADMISSION PRICES</u>	<u>ADULTS</u>	<u>CHILDREN</u>
<u>STAND</u>	9/-	No Reduction.
<u>PADDOCK</u>	6/-	3/-
<u>GROUND</u>	5/-	3/-

Price of Official Programme - 9d.

Ground Capacity - 40,000.

## J. E. WILLIAMS & SON

CYCLE & MOPED SPECIALISTS

17 Edleston Road, Crewe

Phone: 55672

**First Class Repair Service**

Telephone—Crewe 4773

## BARBER BROS.

**Builders & Contractors**

Plumbing, Painting, Decorating, Plastering  
Glaze Tiling, Floor Laying, General Repairs

**54 SYDNEY ROAD, CREWE**

## Hodgson & Sanders

Ltd.  
DEEP HOLE DRILLING MACHINES  
WESTON ROAD, CREWE

## HOSAN Machine Tools

Phone Crewe 55258. Cables, Hosan, Crewe

## PROVINCIAL PRINTING SERVICES (CREWE) LTD.

79 VICTORIA STREET, CREWE

Printers and Commercial  
Stationers

Phone - Crewe 55329

Farmers, Gardeners and  
"Do-it-Yourself" enthusiasts  
obtain your requirements from—  
**NORTH WESTERN FARMERS LTD.**  
CATTLE MARKET, GREY RD.  
CREWE  
Tel. 55315.

## GOODWIN BROS.

(Wheelock) BUILDERS LTD.

Building & Constructional Engineers

WHEELOCK, SANDBACH

CHESHIRE

TELEPHONE, SANDBACH 3729

## Today's Visitors

### Luton Town

Goalkeeper, SANDY DAVIE. Was signed earlier this season from Scottish First Division club, Dundee United.

Right Back, MAX DOUGAN. A fee of about £7,000 changed hands when this ex Scottish amateur International left Leicester City, his caps having been earned with Queens Park. Has finally settled in the right back position after playing at right half for a time.

Left Back, JACK BANNISTER. Jack was signed in the early part of the season from Second Division club, Crystal Palace. He can also play at wing half.

Right Half, ALAN SLOUGH. Is a true local product because he was amateur and apprentice with the Town before signing as a full-time player. In his early days he was a full back but he plays extremely well at wing half.

Centre Half, TERRY BRANSTON. For him last season was a personal triumph because, not only was he a member of a promotion team for the fourth time during his career but he fulfilled his ambition of making the full quota of League appearances. He spent nine seasons with Northampton Town.

Left Half, JOHN MOORE. Was transferred from Motherwell four seasons ago. In the opinion of many people was the most improved player on the books and is now a regular member of the back four.

Outside Right, BRIAN LEWIS. He was Luton's most expensive signing when he came from Coventry City, until Mike Keen joined the club. Made 20 First Division appearances last season, mostly at wing half but now plays in the forward line and he is in fact the club's top scorer. Previously with Portsmouth.

Inside Right, MIKE KEEN. Mike is Luton's most recent signing, having joined them only last week from Queens Park Rangers for a substantial fee. He has now teamed up again with former Rangers' Manager, Alec Stock who he played under during Rangers' climb to the First Division. He started this season as the captain of Queens Park Rangers.

Centre Forward, IAN BUXTON. Joined Luton last year from Derby County for about £11,000. He missed the beginning of the season due to his cricket commitments with Derbyshire.

Inside Left, KEITH ALLEN. Joined the club from Stockport County in exchange for Derek Kevan. He has been appearing for most of the season at right half but he will be playing in the inside forward position to-night.

Outside Left, MIKE HARRISON. Last season he played with Plymouth Argyle. Born at Ilford, Harrison began his first-class career with Chelsea before moving to Blackburn Rovers where he established a regular first team place.

Substitute, BILLY McDERMENT. Was signed from Leicester City as a right back but most of his team appearances were at left back. He played 20 first team appearances last season which qualified him for a Championship medal.

Agent for all Leading makes of  
Boilers and Oil Burners

# CLIFFORD DYTOR

Central Heating Specialist

94 Edleston Rd., Crewe

Tel. 55460

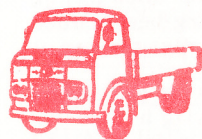
## THE Crewe School of Motoring

3 High St., Crewe & Branches  
Tel. 3363/3919

★ Cheshire's Leading Driving School ★

**DRIVING LESSONS**  
17,500 Test Successes

Tel. CREWE 3788



**C. E. Jones**  
301 Stoneley Rd.  
Crewe

Sign Writing, Sign Manufacturing,  
Coach Painting, Cellulose Spraying  
Motor Body Repairs

**WEBSTER'S  
OF CREWE**  
FOR EVERYTHING ON  
TWO WHEELS

All the popular makes and  
models, scooters, mopeds and  
motorcycles. New and used  
cars and three wheelers too.  
See the complete range  
including new and used  
models, plus all the other  
popular makes of car and  
two and three wheelers.  
Mill St. Crewe,  
Crewe 2268  
Open 7 days a week

★ Dairy Crest ★

the name to look for when buying

**ENGLISH**

Cheese, Butter, Yoghourt  
Dessert Custard

Don't forget to ask for these  
by Name

## ASSOCIATED RADIO TAXIS

Crewe 4603

All work undertaken. Accounts available

151 Gainsborough Road, Crewe

## F. & A. Hilditch & Co.

The Garage,  
Crewe Road,  
Haslington, nr. Crewe

## Up Crewe Theatre !

BEERS ARE BEST ...

BOTTLED BY

★ ELLIOTT'S ★

Wine Merchants of Crewe

Telephone Crewe 2180

Referee:

J. H. Yates (Redditch)

Linesmen:

E. R. Garner (Liverpool)

G. Davies (Derby)

## CREWE ALEXANDRA

Crewe Scorers

Scarlet Shirts, Scarlet Shorts

- 1 MAILEY
- 2 LOWRY
- 3 LEIGH
- 4 STOTT
- 5 BARNES
- 6 GANNON
- 7 RATCLIFFE
- 8 McHALE
- 9 HOLLETT
- 10 INGLIS
- 11 BRADSHAW
- 12 To be announced



Luton Scorers

## LUTON TOWN

White Shirts, Black Shorts

- 1 DAVIE
- 2 DOUGAN
- 3 BANNISTER
- 4 SLOUGH
- 5 BRANSTON
- 6 MOORE
- 7 LEWIS
- 8 KEEN
- 9 BUXTON
- 10 ALLEN
- 11 HARRISON
- 12 McDERMENT

SIR STANLEY MATTHEWS recommends

# Mornflake

## OATS

FOR THAT EXTRA ENERGY

## Houston & Sons Ltd.

### Metal Merchants

We are one of the largest buyers of ferrous  
and non-ferrous metals in the North-West

For prompt payment we have a reputation  
second to none

Our fleet of vehicles collect from Carlisle to  
London and from the Midlands to Holyhead

Registered Office—

85 Oakley Street, Crewe

Telephone—Crewe 55312/3 and 67848

Branch—

2 Union Street, Congleton

Telephone—Congleton 2944

TELEVISION? Then its  
**Viggars & Co.**  
137 NANTWICH RD., CREWE



Electrical, Radio  
and Television  
Dealers

Rentals,  
Cash or Terms

Telephone 3266

## D. H. GROCOTT, Ltd.

Agents for—

Volvo Renault Volkswagen

**Wistaston Garage, Crewe**

Tel. Crewe 2580. Service Dept. 2566

## Tudor Rose Restaurant

(1 minute from Ground)

FULLY LICENSED

NANTWICH ROAD

Snacks and Meals served  
any time 8 a.m. to 8 p.m.

## Preston & Owens Ltd.

BUILDERS AND CONTRACTORS

Telephone -3384

Works and Office—

RAINBOW STREET, CREWE

Estimates Free

## M.&M. Car Sales

(Crewe) Ltd.

★ Second hand Car ★  
★ Specialists ★

1a Underwood Lane  
Crewe

# Warmingham Grange Country Club

Wining, Dining, Dancing, every Saturday  
Sunday 18-Plus Club

Bookings and Parties catered for

● Cut out this Advert, it entitles you to your first free drink at the Club

## SUPPORTERS' JOTTINGS

Last Saturday the game at Brighton looked as though it would be off to a late start due to the late arrival of the Crewe team whose schedule had been disrupted by a landslide north of Rugby but, thanks to the Southern Region of British Rail, they eventually made it with just a few minutes to spare. Having spoken to club officials they cannot speak too highly of the co-operation and courtesy they received from the staff at Victoria Station to enable them to get through to their destination on time. It is not often that Crewe Alexandra gets a mention in the Sunday Times but it did last weekend.

The Brighton trip had many interesting features, David Wilkinson, a ground Season Ticket holder and a member of the Junior Section, had arranged to meet the coach at the Kidsgrove Intersection of the M.6 but changed his mind and cycled from Tunstall to Crewe in time for a 7-0 a. m. departure. From the point of view of control the referee had quite an easy afternoon but it was interesting to see several players, who it appeared needed attention from the trainer, make a sudden recovery when the referee came over to where they lay, it was no use shamming injury for the referee was a qualified doctor, Dr. W. G. Brady of Gloucester. The Brighton supporters, although obviously delighted with a home win, were full of praise for the Crewe team and said that it was one of the best games they had seen this season and looked forward to us visiting their Goldstone Road ground again next season.

We hope that it will be a case of third time lucky and that the game with Luton will go on as scheduled, for already both the home and away games have been postponed this season. When Luton came here last season, it was on the outcome of that game that promotion depended and the team responded magnificently and won by a 2-1 margin. There is no such reward this evening but the points available could be very vital in enabling us to keep our Third Division status.

When the season started Allan Brown was in the Managerial Seat but a recent change saw Allan Brown go to Torquay and Alec Stock move in. They are, once again, having a successful season and could well be serious promotion contenders before the season is out.

At present they are in sixth position in the league with 30 points from 25 games. At their own ground they are a formidable side and have only dropped one point in 12 games and a goal average of 31 for and 7 against. Away from home, while only scoring 7 goals in 13 games, they have won 2 and drawn 3 and

For the Best Bread and Confectionery  
**CHATWIN'S**

NANTWICH — CREWE — SANDBACH  
and ALSAGER

Telephone—4291

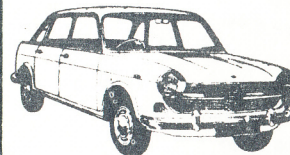
**KLARA** Hair Stylist

30 HIGH STREET, CREWE

also at

34 Bramhall Road, Crewe Tel. 55416

Your AUSTIN Dealer



**JAMES SLACK**  
MOTORS LTD.

EARLE ST.,  
CREWE  
TEL. 2448

**CREWE**

**TYRES**

TYRES  
and  
BATTERIES

DERBY STREET, off West Street

Phone 55966

Open all week, including Sunday a.m.

**F. L. & G. SPODE**

Public Works & Paving Contractors  
RICHMOND HOUSE, 189 QUEEN ST.,  
CREWE. Tel. 2670  
*CRAZY PAVING SPECIALISTS*

**SAMUEL JACKSON & SONS LTD.**

Agricultural & General Engineers  
HUNTS BANK WORKS,  
WISTASTON, CREWE  
Telephone—Crewe 67263

conceded only 16. Only last week they moved into the transfer market and secured Mike Keen from Queens Park Rangers, at a considerable fee. Also in their forward line is Bruce Rioch who has been watched by many of the First Division clubs.

What is the connection between Luton's dismissal from the F. A. Cup this year and our own dismissal in 1967? We were both beaten by a single goal from the Penalty spot taken by Francis Lee, he was with Bolton Wanderers in 1967 but is now with Manchester City.

Our next League fixture is one in which points to either side are vital, for we visit Boundary Park, home of Oldham Athletic who at present occupy bottom position but, after a disastrous start have been picking up points recently. No doubt there will be a good following due to the short journey involved.

Congratulations to Tommy Lowry who became the latest member of the staff to complete 100 first team appearances when he played at Brighton.

Have you, the reader, any comments you would like to put into the programme? If you have please forward them to the address below.

H. FINCH, Programme Secretary,  
90 Moreton Road, Crewe.

**CROWN**

School of Motoring

Prop. — Gerry Almond

62 Nantwich Road, Crewe  
Tel. 2335

Crewe's most go-ahead school  
Our motto — value for money

**MOTORISTS**

For the Lowest Premiums  
and Best Policies

MOTOR INSURANCE CENTRE  
232 Nantwich Rd., Crewe. Tel. 4290

**Albert E. Chatfield**

(Crewe) Ltd.

—  
Main **FORD** Dealers

41 HIGHTOWN, CREWE

Cheshire.

Solid Fuel, Gas and Oil Installations



PERSONAL SERVICE by  
**DYDE & MOYLE**

Plumbers, Contractors & Heating Engineers

308 BROAD STREET, CREWE Phone 2365  
14 LINCOLN STREET, CREWE

**Crypton Electronic Engine Tune-up**

For peak engine performance and economy  
Book now at

**BRADFIELD SERVICE STATION**

BRADFIELD ROAD

Phone—CREWE 55796

★ ONLY ★

**2 gns.**

SPECIAL NOTICE

With the League fixtures in the Northern Floodlit League almost completed, the games in the Challenge Cup Competition will be getting under way. The League has been split into groups and our fixtures are as follows:-

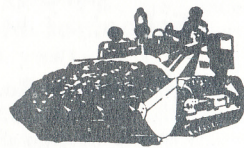
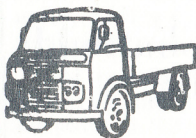
**Home** Wednesday, 12th February v. Stockport County. Kick-off 7-30 p. m.  
Wednesday, 5th March v. Carlisle United. Kick-off 7-30 p. m.  
**Away** Tuesday, 18th February v. Southport. Kick-off 7-30 p. m.  
Tuesday, 25th February v. Oldham Athletic. Kick-off 7-30 p. m.

\*\*\*\*\*

Our goalkeeper, Willie Mailey, had good reason to remember the referee who had the game at Brighton last Saturday, Dr. W. G. Brady, for when playing with Everton he broke his leg and it was Dr. Brady who set the leg. There is no doubt that he did a first class job as Willies' agility proves.

Whilst on the subject of goalkeepers, Brian Williamson, who was once on our books, gave a brilliant exhibition in the televised Cup-tie between his present club, Fulham, and the Cup holders, West Brom. Unfortunately, despite his great performance, his side were beaten 2-1.

**PLANT HIRE HAULAGE  
SITE CLEARANCE  
CONTRACTING**



**J. E. BROOKES LTD.**

Hardcore

**Brookhouse Garage**

Shale

Sand Fill

CREWE ROAD, WHEELOCK

Top Soil

TEL. SANDBACH 3322/3

ROAD CONTRACTS



DEMOLITION



CAR PARKS

1968	Third Division	F	A	Gate
Aug. 10	Plymouth Argyle	A	2 2	9,946
14	League Cup - Northampton T.	A	1 1	5,104
17	Hartlepool F.C.	H	1 0	5,564
21	N/hampton (L.C.)	H	1 0	5,502
24	Shrewsbury T.	A	1 1	7,532
28	Bournemouth	A	0 4	5,979
31	Bristol Rovers	H	6 1	5,833
Sept. 4	Southampton (LC)	A	1 3	12,893
6	Stockport County	A	1 2	9,389
14	Northampton T.	H	2 2	5,386
18	Reading	H	1 2	6,509
20	Walsall	A	1 1	5,570
25	League Cup			
28	Watford	H	2 3	5,740
Oct. 5	Tranmere Rovers	H	2 3	5,446
7	Bournemouth	H	0 2	4,827
12	Torquay United	A	0 2	8,507
16	League Cup			
18	Mansfield Town	H	2 1	4,273
26	Barrow	A	0 2	5,453
Nov. 6	Brighton & Hove	H	1 0	3,811
9	Barnsley	A	2 2	9,130
16	Altrincham	A	1 0	
22	Southport	A	0 4	4,652
30	Rotherham Utd.	H	1 0	4,635
Dec. 7	Halifax F.A.2.	A	1 1	
11	Halifax F.A.2.	H	1 3	7,265
14	Torquay United	H	2 1	2,518
21	Mansfield Town	A	1 2	6,337
26	Tranmere Rovers	A	1 0	6,609
28	Barrow	H	1 1	4,523
1969				
Jan. 4	Orient	H	2 0	4,865
18	Barnsley	H	1 4	5,109
25	Brighton & Hove	A	1 3	
29	Luton Town	H		
Feb. 1	Oldham Athletic	A		
8	Southport	H		
15	Rotherham Utd.	A		
22	Gillingham	H		
26	Luton Town	A		
Mar. 1	Plymouth Argyle	H		
3	Orient	A		
7	Hartlepool Utd.	A		
12	Oldham Athletic	H		
14	Shrewsbury Town	H		
15	League Cup (F.)			
19	Gillingham	A		
21	Bristol Rovers	A		
22	F.A. Cup (S.F.)			
29	Stockport County	H		
April 4	Swindon Town	H		
5	Watford	A		
7	Reading	A		
11	Walsall	H		
15	Swindon Town	A		
19	Northampton T.	A		

# Fixtures 1968-9

Northern Floodlit League		F	A
1968			
Aug. 20	Oldham Athletic	A	post.
26	Stockport County	A	0 1
Sept. 5	Southport	A	post.
11	Shrewsbury Town	H	3 1
24	Carlisle United	A	
Oct. 9	Wigan Athletic	H	2 0
16	Wrexham	H	1 1
23	Wigan Athletic	A	2 0
28	Wrexham	A	0 2
Nov. 13	Carlisle United	H	1 1
20	Southport	H	3 4
27	Shrewsbury Town	A	2 1
Dec. 4	Oldham Athletic	H	0 3
18	Chester	A	0 4
1969			
Jan. 6	Barrow	A	0 1
15	Barrow	H	1 1
22	Stockport	H	2 0
Lancashire League			
1968			
Aug. 10	Morecambe Res. K.O.	H	0 4
17	Morecambe Res. K.O.	A	3 3
31	Burnley "A"	A	2 1
Sept. 7	Rochdale Res.	H	4 0
14	Preston N.E. "A"	A	0 4
21	Southport Res.	H	3 0
28	Bury "A"	A	3 1
Oct. 12	Everton "A"	H	1 2
19	Southport Res.	A	0 3
26	Preston N.E. "A"	H	3 0
Nov. 2	Tranmere R. "A"	A	post.
9	Bury "A"	H	2 7
16	Liverpool "A"	A	0 0
23	Manchester C. "A"	H	1 1
30	Everton "A"	A	1 1
Dec. 7	Manchester U. "A"	A	1 2
14	Morecambe Res.	A	0 2
21	Tranmere Rovers	H	1 4
28	Fleetwood Res.	A	0 0
1969			
Jan. 4	Blackpool "A"	A	3 2
11	Fleetwood Res.	H	
18	Bolton W. "A"	A	6 0
25	Manchester U. "A"	H	2 0
Feb. 1	Liverpool "A"	H	
15	Burnley "A"	H	
Mar. 1	Rochdale Res.	A	
8	Bolton W. "A"	H	
15	Manchester C. "A"	A	
22	Blackpool "A"	H	
April 5	Morecambe Res.	H	

*For a Good Home Win*  
CONSULT

# TOWNLEY RACING LTD.

## YOUR CREDIT BOOKMAKERS

**68 Gresty Road, Crewe (opposite ground)**  
**10 Mill Street, Crewe**

Enquiries for Credit welcomed at either of these addresses

A challenge was recently thrown out at a Junior Section Meeting to write a column for inclusion in the programme. We had a quick response and the following is printed with the full permission of the Football Club.

### A Junior's Point of View

"To a junior supporter, last season was great, with a fairy-tale ending, with the club clinching promotion by beating the Fourth Division Champions in the last game of the season. But this season may seem an anti-climax, with the team trying hard to strengthen their present Third Division status. To say that Crewe are having a fairly bad season is unfair, for we are satisfied with their present form and position. Surely no-one expects instant success from a small-town club like Crewe Alexandra. Take two examples of clubs who raced to the First Division:- Queens Park Rangers who at present are not having such a comfortable time, and Northampton Town who dropped like a stone back to Division Three in consecutive seasons.

'We are the Champions', 'You'll Never Walk Alone' and 'We Shall Not Be Moved', all well known football chants heard in England. Are they getting stale? Most clubs have a song which is theirs. Crewe have 'Now is the Hour' and West Ham United have 'I'm Forever Blowing Bubbles'. In our opinion, clubs should revive their old songs and get rid of these stale chants. Come on lads, let's have some original chants at least.

J. Warham and G. Pearson.

### Junior Supporters' Notes

The January meeting which was postponed for a week, although down in numbers due to the torrential rain, was nevertheless a great success with some really lively discussion on a variety of subjects.

A strong contingent made the long journey to Brighton and although they ran into thick fog during the trip they arrived in good time.

Next Saturday we are off on our travels once again but this time it will be a short journey to Oldham. If you have not already booked, there is still time, call at the office on the ground.

The following away trip will be breaking new ground for it will be to Rotherham and as we have not played at Millmoor since the Junior Section was formed we have not had the opportunity to go.

J. T.

## GRETTY

& SONS LTD.

BUILDERS & CONTRACTORS

Phone—Crewe 67254/5

or write

Willaston, Nr. Nantwich

### 'VOGUE' Hair-stylists

offer you up-to-date Hairstyles and Fashion Wigs with complete cleaning and Tinting Service.

Do tell your wife to come to—

**27a Market St. Crewe (Tel. 55904)**

### F. T. MEREDITH & Co.

Funeral Directors

Funerals Completely Furnished  
Cremations Arranged

**13 South Street, Crewe**

**14 Beam Street, Nantwich**

Tels. — Day 55496 Night 65496

### ODD NOTES

Was it just a coincidence that Barnsley should turn in such a display when they visited Crewe for our last home game or was it because their photograph appeared in the Football League Review that week.

Our own club had two mentions in last Saturday's Review. They appeared in the feature showing the playing colours and also there was an interesting article about our own Manager, Ernie Tagg. No doubt the inhabitants of Shavington would be surprised by its spelling, which was incorrectly shown as Shevvington.

It has been ascertained that in due course a colour photograph will appear in the Review but the precise date is not yet known. Quite a number of supporters had raised this particular point.

Our own conquerors in the FA Cup this season turned in a great performance to hold Stoke City to a draw at the Victoria Ground. Watford also gave Manchester United a surprise by taking the lead and despite the pressure, they gained a replay. At least two representatives from the Third Division made further progress, Mansfield Town, conquerors of Southend United, and Bristol Rovers, shock winners over Bolton Wanderers.

### RICHARD MULLOCK & SONS

Hough Garage, Newcastle Road,  
Hough, Nr. Crewe.

Telephone—Wybunbury 320

TRIUMPH & MORRIS DEALER

New Triumph 2000 Saloon	£1198
New Triumph 1200 & 12/50 Saloon	£627
New Morris 1800 Saloon	£923
New Morris Oxford De Luxe Saloons	£814
New Morris 1100 De Luxe Saloons	£689
New Morris 1000 De Luxe Saloons	£575
New Morris Travellers from	£585
New Morris Mini Saloons from	£522

Open daily including Sunday until 8-30 p.m.

Telephone: 2404

### H. G. HOPKINS

GUNSMITH

55 HIGH STREET, SANDBACH

New & Second Hand Guns Supplied  
Gun and Rifle Repairs and Alterations

### LOWER BROOK GARAGE

Proprietor: F. A. DONOVAN

Morris and Riley Dealer

NEWCASTLE ROAD, SANDBACH

Telephone—2729



**W. E. Tatler & Sons Ltd.**

Motor Engineers etc.

Hospital Street, Nantwich

Tel. 65666

for

**PEUGEOT**

All kinds of property repairs.  
Estimates Free

**Stan Parker & Sons**

BUILDERS and CONTRACTORS

Windy Nook, Maw Green Road  
Crewe

Telephone: 3505

STANDARD



TRIUMPH

**Coppenhall Garage**

LTD. Telephone 2743

**CROSS GREEN, CREWE**

Self service Vacmobile car wash 8 am till dusk  
NEW AND USED CAR SALES

Wybunbury  
Crystal Sand

is BEST!

(H. W. ADDISON)

Tel. Wybunbury 231

**FIRST TEAM APPEARANCES 1968-69**

	League	L.C.	F.A.	Sub.		League	L.C.	F.A.	Sub.
Barnes	23	3	3	.....	Stott	26	3	3	.....
Bradshaw	15	3	.....	6	Tarbuck	20	1	3	2
Curley	18	2	1	4	Turner	15	1	.....	.....
Emmerson	3	.....	1	1	Wallace	9	2	.....	.....
Gannon	21	1	3	.....					
Hollett	7	.....	2	.....					
Inglis	8	.....	2	1					
Leigh	26	3	3	.....					
Lowry	26	3	3	.....					
Mailey	26	3	3	.....					
McHale	20	3	3	.....					
Ratcliffe	16	2	3	2					
Regan	7	3	.....	.....					

**Johnson & Fletcher**

Painters and Decorators

306 BROAD STREET, CREWE

Estimates Free

Tel. 3858

**J. L. ALLEN**

STEWART STREET, CREWE.

for

Timber, Building Materials, Walling Stone,  
Paving Flags, Sand, Gravel & Cement.

Paving, Concreting & Fence Erection  
Work Undertaken.

Free Estimates For All Work

1 sure way

2 ensure

X 'ceptional service

**CREWE ASH CO. LTD.**

SUPPLIERS OF

SCREENED ASH & FILLINGS

VICTORIA AVENUE, CREWE

Telephone 2472

Advertising handled by Sports Publications, 58 Edgware Way, Edgware, Middx

Printed by Cowdall's, 16 Flag Lane, Crewe.