


# BRISTOL ROVERS



Football Club  
Ltd. 1883

SEASON 1968-69

BRISTOL STADIUM EASTVILLE

FOOTBALL LEAGUE

Division III

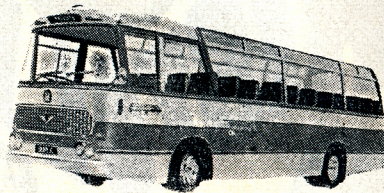
**LUTON**

MONDAY, MARCH 31st

Kick-off 7.30 p.m.

PROGRAMME 9d. INCLUDING FOOTBALL LEAGUE REVIEW

Follow the  
**ROVERS**  
example and  
travel with



**WEMS**

**LUXURY COACHES**

Head Office: **THE BEACH, CLEVEDON**

Telephone: Clevedon (87) 2381

A FLEET OF LUXURY COACHES AVAILABLE FOR  
FOOTBALL, SKITTLE MATCHES, OUTINGS, etc.

**YOU SCORE EVERY TIME**

WHEN YOU BUY YOUR FLOWERS OR  
ANY STYLE OF FLORISTRY FROM

**ROGER ET CIE**

**LTD**

**BRISTOL'S LEADING FLORISTS**

BRIDAL BOUQUETS — FLORAL DECORATION

MEMORIAL TRIBUTES IN ANY DESIGN

SYMPATHY FLOWERS FOR THE BEREAVED

FLOWERS SENT  
ANYWHERE



HOME OR  
ABROAD



**SHOWROOMS**

746 FISHPONDS ROAD  
TEL 652365

NITE 653394  
BRISTOL

24 GLOUCESTER ROAD  
TEL. 43009

## Bristol Rovers Football Club

President:

His Grace the Duke of Beaufort, K.G., P.C., G.C.V.O.

Directors:

D. Mearns Milne (chairman), H. E. L. Brown, E. W. H. Godfrey, J. P. Hare, P. W. Hort, C. A. L. Stevens  
A. I. Seager.

Medical Officer:

Dr. W. T. Cussen

Manager - Secretary: Bert Tann.



Team Manager: Fred Ford.

The bitterly cold weather coincided with our last two home games and undoubtedly kept away many people who would have come. So we were denied the opportunity of assessing the return of erstwhile supporters.

Teams have to be in a winning vein these days to get big crowds during the severest winter conditions and the experiences of clubs in a similar position to us is a question of their luck at the time.

We could have played two away midweek games and our opponents would have suffered by the weather. As it was, we had the games and it is hoped we play tonight's game in weather better suited to spending two hours comfortably out of doors.

The fact that the weather has caused no further postponements is important and something to be grateful about. The difference in the number of games played by teams, and the permission given by the Football League for games to be played until near the end of May, could well produce a farcical situation of one club completing all its fixtures but one on April 19th and having to keep players in training for an away game in the middle of May.

The 'flu epidemic has added to the waste of Saturdays caused by unfit pitches and there is bound to be another hazard added if we try hard enough to think of one.

Without labouring the point, I hope that clubs will have the good



sense to accept a health upset as an occupational hazard as they do injuries, and the rub of the green if fortune frowns.

Getting back to our last two home games, the bright side was the gaining of points and, in particular the scoring goals at last.

Our six last Tuesday were what was required to whet the appetite for more. There is no substitute for goals when it comes to attracting people to the game and as long as we can supply them, our entertainment will be irresistible. Add to it all the quality of the goals scored the other night, and we are made.

It won't be so easy tonight against our Luton opponents but the urge to reverse the 0-3 defeat a fortnight ago should give us a fine game.

**Brown & Sons**  
Seeds Ltd.

1 FAIRFAX STREET  
BRISTOL 1. Tel. 23255

and

50 BEDMINSTER PARADE BRISTOL 3 Tel. 665021

THE EXPERTS  
ON LAWN AND

TURF  
MAINTENANCE

FOR SUMMER HOLIDAYS AT WEYMOUTH STAY AT THE  
**CHANNEL HOTEL**

*Situated on the Sea Front — Glorious views*

Write:—MR. and MRS. F. BUSS, CHANNEL HOTEL,  
7 Gloucester Row, Esplanade, Weymouth. (Phone: 5405)

A FREE wedding cake for Rovers Supporters Club and TRUE  
BLUE Club Members who book their receptions at the . . .

## Merchants Arms

STAPLETON

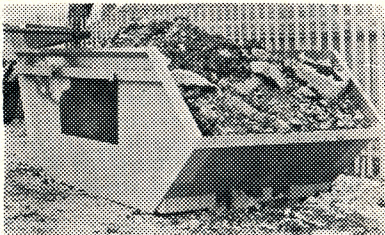
BRISTOL

SYD BOULTON, U.K.B.G.

Tel.: 653439

Lunch, dinners,  
supper dances etc.

*Courage beers - Skittle alley - Hammond organ*



Take a load off your mind  
with the

**HEMMINGS LOAD HOG**

Ring Bristol 56452/58085

*Service anywhere within  
30 miles of Bristol*

**Wm. HEMMINGS WASTAGE DISPOSAL Ltd.**

# Ex-Rover Laurie Sheffield is a man in demand

Former Bristol Rovers centre-forward Laurie Sheffield had the satisfaction of scoring one goal and making another in Luton's 3-0 win over his old club the week before last.

Tonight he comes back to Bristol for the return game, hoping to boost the promotion hopes of the latest in a long line of clubs he has served with a repeat performance.

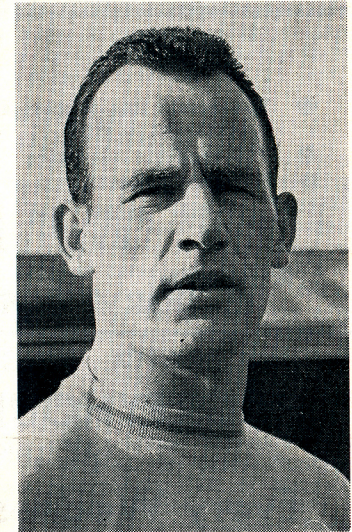
Had he been signed by Rovers two years later, he might never have left the club. Competition for places in the first team attack was fiercer in the days of Geoff Bradford, Peter Hooper and Dai Ward.

So Swansea-born Sheffield first bid to break into League Football failed. He returned to Wales and joined non-League club Barry Town.

His scoring exploits were soon noted by Billy Lucas, then manager of Newport County, and it was not long before Sheffield was back with a League club.

This time, his scoring flair stayed with him. He was transferred to Doncaster Rovers for £10,000 and then his value doubled when he leapt from the Fourth to Second Division to join Norwich.

A brilliant start at Carrow Road faded but he remained a player in demand. The next move took him



**LAURIE SHEFFIELD . . .** scored Luton's final goal against Rovers two weeks ago.

to Rotherham where his stay was brief.

On to Oldham last season when he twice played against Rovers. During the summer, he was transferred to Luton for £9,000.

He had lost his place when Alec Stock succeeded Allan Brown as manager at Kenilworth Road and it looked as if Sheffield might be on the move again when injuries gave him his comeback chance early last month.

He seized it, scoring a goal in the 2-0 win at Bournemouth where his display much impressed manager Stock.

Now he is back as a regular member of the Luton attack.

# RAY MABBUTT

is qualified to advise

YOU...



... IF

- You would like to give your savings the opportunity to grow
- You need life insurance.
- You need a capital sum of money in 10 years' time.

For further details ring...

**Bristol 657969**

or write to...

**65 DORMER ROAD, BRISTOL 5**

— BRISTOL STADIUM (EASTVILLE) —

## GREYHOUND RACING

AT THIS STADIUM

### Every Wednesday & Saturday

At 7.30 p.m. :: Usual Attractive Programme

# DOUBLE DIAMOND

AND

# SKOL

International Lager  
In Bottle and on Draught

---

**IND COOPE DRAUGHT and BOTTLED BEERS**

---

**ALWAYS OBTAINABLE IN THE BARS  
THROUGHOUT THE STADIUM**

# SUPPORTERS NEWS AND VIEWS

## SUPPORTERS' CLUB Eric Godfrey writes ...

It is with infinite regret that I have to announce the resignation of Mr. Tom Spiller from the Supporters' Club Committee. Although great pressure was put upon Tom to continue in office he decided otherwise.

For many years, Tom has done a splendid job and only the Committee Members know how much leisure time had to be relinquished to keep on top of the job.

In his letter of resignation Tom states that he now wishes to spend more time with his family and looks forward to pottering around the garden on a Saturday and then strolling down to Oldbury Court, which is nearby, to watch one of his sons play for the local team.

The advent of his first grandson has given him another interest. Additionally, Tom thinks that Fred Ford is moulding a successful young team together and, if all goes well, a resurgence of interest by the public is going to mean more work for the Supporters' Club and he is no longer prepared to give the extra time involved.

The loss of Tom's services is a great blow both to the Supporters' Club and to me, personally. I must have spent hundreds of hours with Tom planning the fortunes of the Supporters' Club over the past twenty years.

I feel that many of his friends would like to be associated with a presentation to him and I would be

grateful if donors would complete the form below and return it to me as soon as possible.

## TRUE BLUES

Ted Osborne writes ...

Welcome visitors to the club yesterday were Doug and Stan (The Tones). This very polished act has been appearing at some of the major clubs in the country and have just completed a month's engagement in Malta. They will be appearing at the club in May when they share top billing with the Scottish recording artists, the Prince Sisters.

One of the most popular artists to appear regularly at the club is the very talented Burmese singer Cliff Whelan. On Easter Sunday I am presenting Cliff in his own show. Supporting him will be Jennifer Martin, comedian Roddy Miles and Gloria.

The Easter programme will be completed with a dance on Easter Monday for which we have applied for bar licence extension.

Once again our generous butcher Des Woodward donated some very large steaks for the team's lunch before they left for their trip to Hartlepool. Luncheons are served daily and we claim it's the best value in town.

May I remind members that to gain admission to the club they must produce a current membership card, so, please, make a habit of carrying your membership card with you.

To: Eric Godfrey,  
Bristol Rover's Supporters' Club,  
468 Stapleton Road,  
Bristol BS5 6PA.

From: Name .....  
(Block letters)  
Address .....

## TOM SPILLER PRESENTATION

I enclose a remittance for ..... in respect of the above Presentation Fund.

Date ..... Signed .....

Please make cheques etc. payable to "Bristol Rovers' Supporters' Club".

# Club parade 1968-69 . . . . . Luton Town



## TODAY'S TEAMS AND OFFICIALS

<b>ROVERS</b>	V.	<b>LUTON</b>
(Blue)		(Black and White)
Laurie TAYLOR	1	Sandy DAVIE
Bobby JONES	2	Max DOUGAN
Tom STANTON	3	Jack BANNISTER
Stuart TAYLOR	4	Alan SLOUGH
Larry LLOYD	5	Terry BRANSTON
Johnny PETTS	6	John MOORE
Harold JARMAN	7	Graham FRENCH
Ken RONALDSON	8	Keith ALLEN
Wayne JONES	9	Laurie SHEFFIELD
Bobby BROWN	10	Brian LEWIS
Peter HIGGINS	11	Bruce RIOCH

Substitute.....

Substitute.....

Referee:  
Mr. K. MARKHAM  
(Woking)

Linesmen:  
Mr. D. E. SAUNDERS  
(Red flag)  
Mr. D. L. STANTON  
(Yellow flag)

**Next home matches :**

This Friday (3 p.m.)  
NORTHAMPTON  
(Third Division)  
This Saturday (3 p.m.)  
READING  
(Third Division)

# YOUR EASTVILLE SERVICES

Just 500 yards from the  
Rovers ground

**William  
BURROW  
Ltd.**

*Eastville's popular-price  
man's shop*

**441 STAPLETON ROAD  
BRISTOL 5**

**F. W. STONE**

(S. LEWIS PHELPS)

**456 STAPLETON ROAD**

Maintaining over 80 years' personal  
Service to past and present

Rovers' Supporters  
"YOU CAN GET IT AT STONE'S"

IS MORE THAN A SAYING—  
IT'S A TRADITION

Ironmongery - Paints  
Tools - Electrical Goods  
Oil Heaters - Domestic  
Hardware

TELEPHONE: 57516  
EVERYTHING FOR HOME  
— AND GARDEN —

When it's meal time it's  
SMELE time

**JOHN SMELE  
& COMPANY**

*Fruiterers*

*Florists*

*Fishmongers*

**433 STAPLETON ROAD  
EASTVILLE  
Tel. 57191**

*Sole suppliers to Rovers'  
True Blue Club...*

**WOODWARD  
AND SONS**

*HIGH CLASS FAMILY  
— BUTCHERS —*

**410 STAPLETON ROAD  
BRISTOL 5  
Telephone 58559**

**C. A. Stokes**

(Chemists) Ltd.

*TOILET & PHOTOGRAPHIC  
REQUISITES*

Also Prescription 483 for Dandruff  
and care of the hair

**437 STAPLETON ROAD  
Telephone 556603**

**423 WHITEHALL ROAD  
Telephone 556587**

LEN MURPHY invites you to  
Rovers Supporters' favourite  
Local

**WHITE SWAN HOTEL**

*Bed and breakfast H. & C.  
every room*

*socials, weddings*  
**2 FISHPONDS ROAD  
EASTVILLE  
Tel. 56187**

Snacks at the bar, children's  
room, musical entertainment  
— at week-ends —



Bobby Jones gets the better of right-back Sandy Pate and heads for goal during Rovers' big win over Mansfield Town at Eastville last week.

## CAREERS RECORDS

	To date		1968/69	
	Aps.	Gls.	Aps	Gls.
Barney	29(1)	2	19	2
Brown	18	3	18	3
Gadston	4(2)	2	4(2)	2
Graydon	57(2)	10	33(2)	9
Higgins	2	—	2	—
Jarman	384(3)	107	44	13
Jones (R)	368	91	40	10
Jones (W)	94(1)	11	39(1)	5
Lloyd	45	1	45	1
Mabbutt	445(3)	30	24	5
Parsons	91(3)	—	37	7
Petts	90(4)	5	30	1
Plumb	44	9	6	—
Prince	15	1	12	1
Rhodes	1	—	1	—
Ronaldson	73(5)	16	10(2)	3
Stanton	30(1)	1	30(1)	1
Taylor (L)	91	—	42	—
Taylor (S)	116	11	44	3
White	3	—	3	—
Williams (J)	75(2)	12	7(1)	—
Williams (R)	23(1)	5	5	2

Figures in brackets indicate appearances  
as substitute.

## THIRD DIVISION

	GOALS						
	P	W	D	L	F	A	Pt
Watford	36	21	9	6	59	24	51
Swindon	37	21	7	9	56	30	49
Luton	37	21	7	9	61	33	49
Plymouth	39	17	11	11	47	40	45
Bournemouth	37	18	6	13	55	37	42
Brighton	41	15	11	15	64	56	41
Tranmere	39	16	9	14	56	58	41
Torquay	36	16	8	12	46	34	40
Stockport	36	14	12	10	60	53	40
Northmpton	38	14	10	14	47	46	38
Walsall	38	12	13	13	42	40	37
Reading	38	13	11	14	57	55	37
Rotherham	38	13	10	15	44	43	36
Orient	37	12	11	14	43	49	35
Southport	35	14	7	14	57	51	35
<b>ROVERS</b>	<b>37</b>	<b>13</b>	<b>8</b>	<b>16</b>	<b>54</b>	<b>58</b>	<b>34</b>
Barnsley	36	11	11	14	45	53	33
Gillingham	37	10	12	15	45	55	32
Barrow	36	12	8	16	44	62	32
Hartlepool	37	8	14	15	33	65	30
Crewe	36	11	7	18	42	57	29
Mansfield	33	9	10	14	42	48	28
Oldham	39	10	8	21	40	69	28
Shrewsbury	35	9	8	18	29	52	26

The greatest

DOUBLE

market in England

# BRISTOL OPEN MARKET

Every FRIDAY (9 a.m. — 4 p.m.) and

SUNDAY (9 a.m. — 2 p.m.)

ON EASTVILLE STADIUM CAR PARK

---

*Over 150 stalls to serve you with  
goods of all description*

---

All goods purchased in this market are

**GUARANTEED**

TONIGHT'S VISITORS

## Luton in the hunt again

West Countryman Alec Stock, who guided Queens Park Rangers from the Third to First Division in two seasons and to success in the League Cup Final, is now striving to restore Luton Town to the heights from which they toppled so dramatically.

Allan Brown started the upward trend, leading Luton to the Fourth Division championship last season and now the club are pressing for promotion again.

**SANDY DAVIE**, a former Scottish Under-23 'keeper, was signed from Dundee United last October for £8,000.

**MAX DOUGAN** was a centre-half when signed from Leicester for £7,000. The former Scottish amateur international switched to full-back when Terry Branston was signed.

**JACK BANNISTER** is also better known as a half-back. He was signed from Crystal Palace the same week as Davie and for the same fee.

**ALAN SLOUGH** is a local product, playing as an amateur and then apprentice before signing a full contract.

**TERRY BRANSTON** was Northampton's centre-half when they rose from the Fourth to First Division and became a member of a promotion side for the fourth time last season with Luton's championship team.

**JOHN MOORE** is in his fourth season with the club after being snapped up when given a free transfer by Motherwell.



Alec Stock . . . aiming to repeat his Q.P.R. success.

**GRAHAM FRENCH**, former England Youth cap, played for Shrewsbury, Swindon and Watford before being signed from non-League Wellington three years ago.

**MIKE KEEN** recently followed manager Stock from Queens Park Rangers for a fee of £20,000. Midfield man Keen skippered Rangers and was a key man in their promotion teams.

**KEITH ALLEN**, who has also played for Portsmouth and Grimsby, was signed from Stockport County in exchange for Derek Kevan. Plays midfield or as a striker.

**BRIAN LEWIS**, expensive signing from Coventry for whom he made 20 First Division appearances last season. He was previously with Portsmouth.

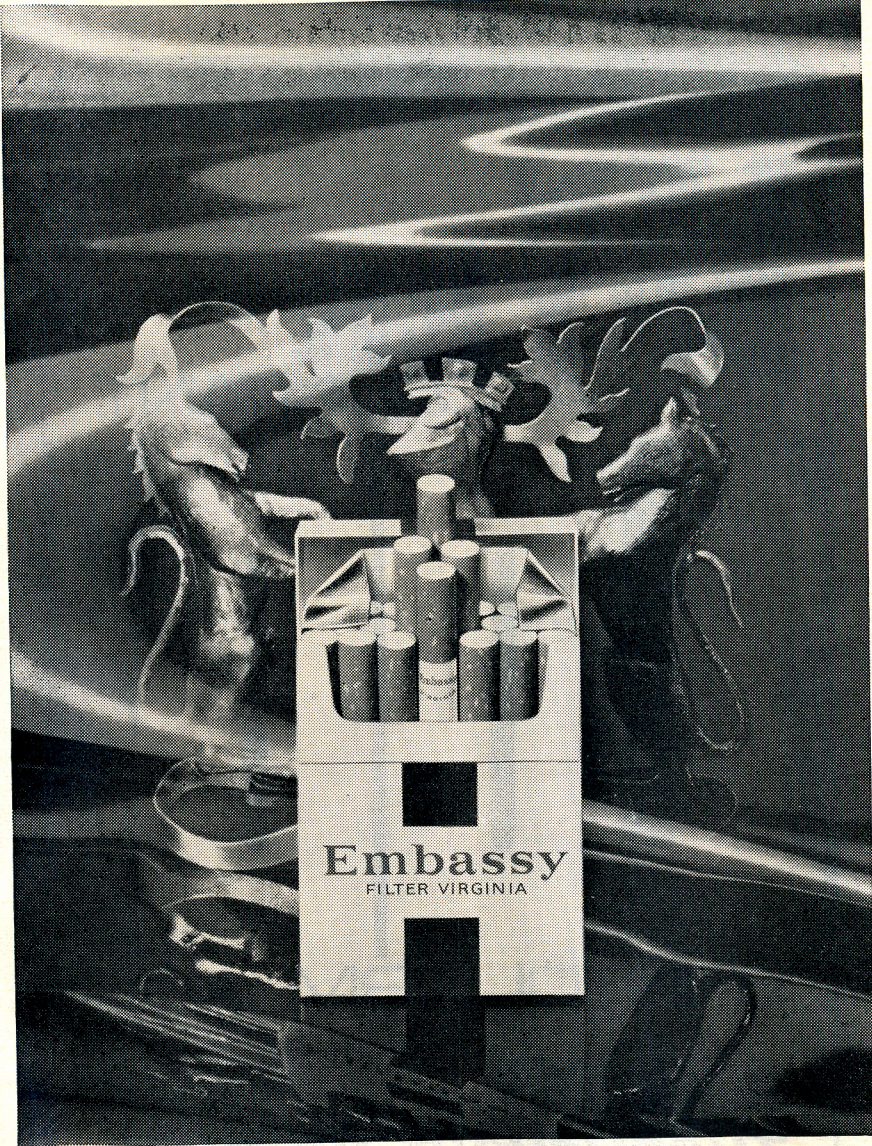
**FREDDIE JARDINE**, signed from Dundee, is in his eighth season at Kenilworth Road.

**IAN BUXTON** was signed early last season from Derby County for £11,000. Plays as an all-rounder for Derbyshire.

**BRUCE RIOCH**, who made his comeback following a cartilage operation against Rovers a fortnight ago, is rated as one of the most valuable and talented young forwards in the game.

# YOUR COMPLETE ROVERS FIXTURE GUIDE FOR 1968-69

LEAGUE DIVISION III		Opponents		F. A.		8-Kettering (F.A. Cup replay)		17-Bristol City		A 2-1		Sept. 7-Bristol St. Grg.				
Date	1968/69															
Aug.	10	Walsall	H	1-1		10-Tranmere Rvs.	A	2-1	25-Curdiff City	A	1-3	21-Cadbury Heath	H	1-1		
"	13	Swansea T.	H	1-1		18-Brighton	H	1-1	28-Chelsea	A	3-1	"	28-Charlton Kings	H	1-1	
"	16	Walsall	H	0-2		25-Bolton (F.A. Cup-4)	A	2-1	<b>FOOTBALL COMBINATION</b>							
"	17	Walsall (League Cup 1)	H	0-2	Feb.	1-Torquay Utd.	A	1-0	Oct. 5-Luton Tn.	A	3-1	Oct. 5-Senior Amtr Cup (first round)				
"	24	Bournemouth	H	3-2		12-Everton (F.A. Cup 5)	H	4-2	"	12-Southampton T.	H	4-2	"	12-Cinderford Res.	A	2-6
"	27	Shrewsbury T.	H	1-2		18-Barnsley	H	0-1	"	19-Oxford Utd.	H	4-2	"	19-Cirencester	A	1-6
"	31	Crewe Alexandra	A	1-6		24-Orient	H	0-1	"	26-Fulham	A	2-2	"	26-Forest Green	A	2-2
Sept.	6	Hartlepool Utd.	H	2-1	Mar.	1-Watford	A	0-1	Nov. 9-Queens Park R.	H	2-4	Nov. 16-Hanham Ath.	A	1-3		
"	14	Plymouth Argyle	A	1-3		4-Barnsley	A	2-4	"	18-Chelsea	H	2-0	"	23-Matson Ath.	H	3-2
"	17	Northampton T.	A	2-2		8-Walsall	H	0-1	"	23-Leicester C.	A	0-3	"			
"	21	Swindon T.	H	2-1		11-Torquay Utd.	H	1-1	Dec. 7-Birmingham C.	A	0-3	Dec. 14-Sharpness	H	1-1		
"	27	Reading	A	1-2		15-Bournemouth	A	0-3	"	14-Arsenal	H	2-4	"	21-Stonehouse	H	0-3
Oct.	5	Oldham Ath.	H	1-0		19-Luton Tn.	H	1-0	"	21-Cardiff C.	H	2-4	"	28-Thornbury	H	0-2
"	9	Shrewsbury T.	A	0-1		25-Mansfield	H	6-2	Jan. 7-Northampton T.	A	2-2	Jan. 11-Thornbury	A	0-2		
"	12	Rotherham Utd.	A	2-3		28-Hartlepool Utd.	A	0-1	"	11-Tottenham Hsp.	A	1-2	"	11-Brimscombe	H	4-1
"	19	Gillingham	H	5-1	Apr.	4-Northampton T.	H	1-1	"	14-Walsall	A	0-1	"	25-Stonehouse	H	1-5
"	26	Mansfield T.	A	0-0		5-Reading	H	1-1	Feb. 1-Ipswich Tn.	H	3-4	Feb. 1-Cadbury Heath	H	4-0		
Nov.	2	Tranmere Rvs.	H	0-2		8-Stockport Cty.	A	1-1	Mar. 8-Swindon Tn.	A	1-0	Mar. 1-Forest Green	H	1-3		
"	4	Barrow	H	4-2		12-Swindon Tn.	A	1-1	"	15-Crystal Pal.	H	2-4	"	8-Gloucester Res.	H	1-4
"	16	Brighton	H	3-1		15-Stockport Cty.	A	1-1	"	22-West Ham Utd.	A	0-0	"	15-Gloucester Res.	H	0-3
"	19	Peterborough (F.A. Cup-1)	H	3-1		19-Plymouth A.	A	1-1	"	29-Bournm'th & B.	H	3-3	"	22-Matson Ath.	A	1-5
"	23	Orient	A	1-2		21-Barrow	A	1-1	Apr. 1-Bristol C.	H	1-1	"	23-Cirencester	A	2-4	
"	30	Southport	H	2-1		28-Bristol City (Glo'shire Cup)	H	1-5	"	12-Peterborough U.	H	1-1	"	29-Old Patchweg'ns	H	0-2
Dec.	7	Bournemouth (F.A. Cup-2)	A	0-0		14-Swansea T.	A	0-2	"	19-Gillingham	A	1-1	Apr. 5-Sharpness	A	1-1	
"	10	Bournemouth (F.A. Cup replay)	H	1-0	Aug.	14-Swansea T.	H	2-0	"	15-Plymouth Argyle	H	2-1	"	12-Stonehouse	A	1-1
"	13	Rotherham Utd.	H	1-1	"	20-Plymouth A.	H	1-1	1968/69	15-Swindon Tn.	A	2-4	"	26-Charlton Kings	A	1-1
"	21	Gillingham	A	2-0	"	31-Chelsea	H	1-1	Aug. 24-Brimscombe	A	3-2	May 3-Cinderford	A	1-1		
"	26	Oldham Ath.	A	1-2	Sept.	7-Plymouth A.	H	1-1	Aug. 31-Yate Y.M.C.A.	H	2-3	"	10-Yate	A	1-1	
Jan.	4	Kettering Tn. (F.A. Cup-3)	H	1-1		10-Kettering City	H	0-4								



the best in smoking

**WILLS** 

pacemakers in tobacco



# LEN BRYER

TURF ACCOUNTANT

BRISTOL FIRM

*BRANCHES  
THROUGHOUT THE CITY*