



# LUTON TOWN

## FOOTBALL CLUB

Telephone: Luton 23151



DIVISION THREE

# v ORIENT

Saturday 23rd August 1969 kick-off: 3 p.m.

Official Programme: Price 1/-



## FIXTURES 1969

### DIVISION THREE

Date	Opponents	Attendance	Result
<b>August</b>			
Sat 9	<b>BARROW</b>	12,080	(H) 3-0
Wed 13	FLC Peterboro'	10,249	(A) 1-1
Sat 16	Bournemouth	9,735	(A) 1-0
Tues 19	<b>PETERBORO'</b>	13,105	(H) 5-2
Sat 23	<b>ORIENT</b>		(H)
Tues 26	<b>HALIFAX T.</b>		(H)
Sat 30	Gillingham		(A)
<b>September</b>			
Wed 3	League Cup 2		
Sat 6	<b>BRISTOL R</b>		(H)
Sat 13	Bradford City		(A)
Tues 16	Southport		(A)
Sat 20	<b>SHREWSBURY</b>		(H)
Wed 24	League Cup 3		
Sat 27	Plymouth Argyle		(A)
Tues 30	Walsall		(A)
<b>October</b>			
Sat 4	<b>STOCKPORT</b>		(H)
Tues 7	<b>BOURNEMOUTH</b>		(H)
Sat 11	Doncaster Rovers		(A)
Wed 15	League Cup 4		
Sat 18	Brighton & H.A.		(A)
Sat 25	<b>TORQUAY U.</b>		(H)
Wed 29	League Cup 5		
<b>November</b>			
Sat 1	Rotherham U.		(A)
Sat 8	<b>BARNLEY</b>		(H)
Sat 15	FA Cup 1		
Wed 19	League Cup S.F.		
Sat 22	<b>ROCHDALE</b>		(H)
Tues 25	<b>FULHAM</b>		(H)
Sat 29	Mansfield Town		(A)
<b>December</b>			
Wed 3	League Cup S.F.		
Sat 6	FA Cup 2		
Sat 13	<b>BRADFORD C.</b>		(H)
Sat 20	Bristol Rovers		(A)
Fri 26	Orient		(A)
Sat 27	<b>GILLINGHAM</b>		(H)
<b>1970</b>			
<b>January</b>			
Sat 3	<b>WALSALL</b> (3)		(H)
Sat 10	Shrewsbury Town		(A)
Sat 17	<b>PLYMOUTH A.</b>		(H)
Sat 24	Bury (4)		(A)
Sat 31	Stockport County		(A)
<b>February</b>			
Sat 7	<b>DONCASTER</b> (5)		(H)
Sat 14	Barrow		(A)
Sat 21	Torquay United (6)		(A)
Sat 28	<b>BRIGHTON</b>		(H)
<b>March</b>			
Tues 3	<b>TRANMERE R.</b>		(H)
Sat 7	Rochdale (LCF)		(A)
Wed 11	Reading		(A)
Sat 14	<b>MANSFIELD</b> (SF)		(H)
Tues 17	<b>BURY</b>		(H)
Sat 21	Tranmere Rovers		(A)
Fri 27	<b>ROTHERHAM U.</b>		(H)
Sat 28	<b>READING</b>		(H)
Mon 30			
Tues 31	Barnsley		(A)
<b>April</b>			
Sat 4	Halifax Town		(A)
Wed 8	Fulham		(A)
Sat 11	FA Cup Final		
Tues 14	<b>SOUTHPORT</b>		(H)

### FOOTBALL COMBINATION

Date	Opponents	Attendance	Result
<b>August</b>			
Sat 16	<b>PETERBORO'</b>	1,326	(H) 4-2
Sat 23	Norwich City		(A)
Sat 30	<b>TOTTENHAM H.</b>		(H)
<b>September</b>			
Sat 6	Gillingham		(A)
Sat 13	<b>BOURNEMOUTH</b>		(H)
Tues 23	Northampton Town		(A)
Sat 27	<b>SWINDON T.</b>		(H)
<b>October</b>			
Wed 1	Crystal Palace		(A)
Sat 11	<b>BIRMINGHAM</b>		(H)
Sat 18	Queens Park Rangers		(A)
Sat 25	Tottenham H. (Cup)		(A)
<b>November</b>			
Sat 1	<b>SOUTHAMPTON</b>		(H)
Sat 8	Leicester City		(A)
Tues 18	<b>WALSALL</b> (Cup)		(H)
Sat 22			
Sat 29	<b>LEICESTER</b> (Cup)		(H)
<b>December</b>			
Tues 2	Walsall		(A)
Sat 6	<b>IPSWICH T.</b>		(H)
Sat 13	Bristol Rovers		(A)
Tues 16	<b>BIRMINGHAM</b> (Cup)		(H)
Sat 20	Arsenal		(A)
Sat 27	Northampton (Cup)		(A)
Tues 30	Walsall (Cup)		(A)
<b>1970</b>			
<b>January</b>			
Sat 10	<b>CHELSEA</b>		(H)
Sat 17	Plymouth Argyle		(A)
Tues 20	<b>TOTTENHAM</b> (Cup)		(H)
Sat 24	<b>READING</b>		(H)
Tues 27	Birmingham (Cup)		(A)
Sat 31	<b>NORTHAMPTON</b> (Cup)		(H)
<b>February</b>			
Wed 4	Leicester City (Cup)		(A)
Sat 7			
Sat 14	Fulham		(A)
Sat 21	<b>SWANSEA T.</b>		(H)
Wed 25	Cardiff City		(A)
Sat 28			
<b>March</b>			
Sat 7	<b>OXFORD UNITED</b>		(H)
Sat 14			
Sat 21	West Ham United		(A)
<b>April</b>			
Sat 4	<b>BRISTOL C.</b>		(H)

© Football League Ltd, 1969



## LUTON TOWN FOOTBALL AND ATHLETIC CO, LTD

KENILWORTH ROAD, LUTON, BEDFORDSHIRE  
TELEPHONE 0582 23151

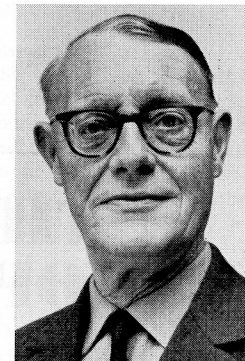
Established 1885 Incorporated 1897  
First Professional Side Season 1891-1892  
Football League Division III Champions 1936-37  
Football League Division II Runners-up 1954-55  
FA Challenge Cup Finalists 1958-59  
Football League Division IV Champions 1967-68

### OFFICIAL PROGRAMME 23 AUGUST 1969

New Series  
Vol. 1. No. 4.

Directors: A. T. HUNT, *Chairman*, L. S. HAWKINS, *Vice-Chairman*,  
J. A. C. BAIN, R. I. BURR, T. HODGSON, H. RICHARDSON  
Secretary: R. Readhead Manager: Alec Stock  
Hon. Medical Officers: Dr C. J. Buckingham, M.B., B.S. and  
Dr P. J. Burrows, M.B., B.Ch., D.Obst., R.C.O.G.  
Hon. Dental Surgeon: A. Hargreaves, Esq.  
Hon. Solicitor: E. Waller, Esq. Auditors: Messrs Keens, Shay, Keens & Co.

*Eric Pugh's Page*



Today holds special significance for the Town manager, Alec Stock, in that it was with the visitors, then Leyton Orient, that he had his first chance as the manager of a Football League club, though he had had a thorough grounding with Yeovil in the Southern League.

In all, he had three separate spells at Brisbane Road, so he has plenty of memories of the club who are now known as Orient.

One thing that has to go this afternoon is a 100 per cent record because the teams go into the match with identical records, having won both their previous games by the same aggregate, 4-0.

#### Modest margin

Orient's victims were Rochdale, by 3-0 at Spotland on the opening day of the season, and Halifax Town, by the more modest margin of 1-0 at Brisbane Road last Saturday when it was thought that they had one eye on Monday's League Cup replay with Fulham which offered the prize of a home tie with Leeds United

Although last season, Orient finished not much clearer of the relegation zone, there were signs in the closing stages that their

blend of youth and experience carefully nurtured by their manager, Jimmy Bloomfield, was beginning to pay off.

#### Surprise packet?

These are early days to make any predictions, but Orient might well prove to be one of the surprise packets of this season, and the Town might well find themselves with a hard task on their hands today.

However, the Town themselves have made a most encouraging start, following up their comfortable opening day win over Barrow with a hard won two points at Bournemouth last Saturday.

Never is Dean Court an easy ground on which to gain any success and this occasion proved to be no exception

# CONNELLS

Auctioneers, Surveyors  
Valuers and Estate Agents

5, Upper George Street, Luton

Telephone: 31261 for

## Houses and Bungalows

COUNTRY HOUSES, COMMERCIAL AND  
INDUSTRIAL PREMISES, COMPULSORY  
PURCHASE NEGOTIATIONS IN

*Luton and Surrounding Districts*

Branch Offices throughout

HERTFORDSHIRE, BEDFORDSHIRE, BUCKINGHAMSHIRE  
and at 62, GROSVENOR STREET, LONDON, W.1.



## THE ONE STOP SHOPPING CENTRE for

Hardware, Electrical, Men's Wear, Fuel, Catering,  
Footwear, Bookshop, Drapery, Furnishing, Toys &  
Sports, Grocery, Greenfruit and Butchery with Credit  
Facilities to suit your requirements.

PLUS DIVIDEND STAMPS

### SUPERSTORE

4 NEW BEDFORD ROAD

LUTON. Tel: 21171

LUTON CO-OPERATIVE SOCIETY LTD



because the Town were made to fight every inch of the way for their success.

### Considerable courage

However, fight they did, with considerable courage and the signs are that they will not find away points so difficult to come by as they did in the first half of last season when a run of seven consecutive defeats on opponents' grounds just about put paid to their promotion hopes.

One feature about last Saturday which must have been of major encouragement to the players was the number of supporters who made the trip to Bournemouth.

### Gillingham following?

Always numbers are difficult to estimate, but it looked as if the following was not much short of 1,000 and that augurs well for support in the immediate future, especially if results continue to go the right way.

Hopes are, of course, that supporters, in equal numbers, will make their way to Gillingham next Saturday when the team will find themselves up against one of their former players in Gordon Riddick who has proved a stalwart for the Kent side.

### Season of struggle?

For them though, it may be a season of struggle, because they went into their match with Fulham at Craven Cottage this afternoon still seeking their first League point, though they, at least, had a League Cup victory at Aldershot last Wednesday week to celebrate.

Before the Kent trip, though, the Town have a home match next Tuesday against newly promoted Halifax Town, who are keen to show that their success last season was no flash in the pan.

### Shock result

Their manager, Alan Ball, father of the England inside-forward star, has got together an experienced side which got off the mark well by beating Shrewsbury 1-0 at The Shay.

Then they gained victory by the only goal at Barnsley which was perhaps one of the shock results of the first round of the League Cup.

With only one goal conceded in three matches, their defence is obviously sound and well marshalled and will provide a test of the strength of the Town attack which could well have had more than a

single goal to show for their Bournemouth visit.

### Linked with Hateley

Once again, during the past week, the Town's name has been linked with that of Tony Hateley, that expensive, much-travelled centre-forward who is now with Coventry City.

That the club were willing to outlay a reputed £60,000 gives some idea of the measure of determination there is to bring Second Division football to Kenilworth Road next season.

### Yardley is back

While on the subject of centre-forwards, the keener fans will have noticed that George Yardley is back with Tranmere Rovers after a second spell in Australian football.

At one stage last season, it was thought that the career of this player, who had a trial period with the Town a couple of years ago, before going to Tranmere, had been ended by injury.

### Four in two games

However, that has not proved to be the case, and his four goals in two matches has lifted Tranmere to the top of the table, although, of course, that does not mean a great deal after only two matches. It does suggest, though, that his goal power may make the Rovers a team to be feared.

### FOOTBALL COMBINATION

SATURDAY, 30th AUGUST

LUTON TOWN

v

TOTTENHAM  
HOTSPUR

KICK-OFF 3 p.m.

*Prices of admission*

Enclosure 2s 6d (adults) 1s 6d Children  
Grandstand 3s.

### OUR COVER PICTURE

*Back Row:* Max Dougan, Mike Keen, Keith Allen, Terry Branston, Sandy Davey, Tony Read Alan Slough, Fred Jardine, John Moore,  
*Front Row:* Graham French, Jack Bannister, Brian Lewis, Laurie Sheffield, Mike Harrison, Bruce Rioch.

# From Bob's Office



*Bob Readhead, Secretary*

One encouraging feature of the start of the season was the size of the attendance at the Reserves' home match with Peterborough last Saturday.

A crowd of 1,326 paid for admission and, with season ticket-holders who, of course, are admitted free, and on whose numbers no check can be made, there were probably well over 1,500 on the ground.

This was decidedly satisfactory, especially in view of the fact that some of the regulars undoubtedly took the chance to go to Bournemouth to see their favourites in action at Dean Court, and to have a look at the sea as well.

#### **Please come again**

Those who were here saw a very entertaining game and we hope they will get the habit of coming to watch the second string in action.

Supporters should note that our new-style programme is now on sale outside the ground as well as inside, and they may find it more convenient to obtain their copies before going through the turnstiles.

#### **Sellers are needed**

There are still vacancies for programme sellers, who receive a wage, plus generous commission and those who wish to apply should do so to my office.

Also needed are a few more stewards and gatemen for duty at first team games.

Once again, I would remind supporters that a new transfer gate is now operating at the Kenilworth Road end of the Bobbers' Stand and supporters wishing to transfer can do so for one shilling.

#### **Tea from the track**

For the convenience of fans in the Bobbers' Stand, we have now arranged

for them to be able to buy tea and light refreshments from sellers on the running track at that side of the ground during the interval.

Donors of match balls are still needed, and we would very much welcome offers from individuals or groups of people.

Requests for records to be played over the amplifying system before the matches and during the interval will be welcomed by John Buttle, our disc jockey, who will do his best to meet all demands.

#### **Come early please**

Another home match is due on Tuesday when Halifax Town will be the opponents, and supporters are asked not to leave their arrival until the last minute, as this tends to build up queues at all entrances, with the result that some people are liable to miss the start of the match.

Sale of season tickets has been most encouraging, but there are still some available, and those people who are still considering the matter are urged to make up their minds quickly and make their choice of the best of the remaining seats.

Tickets for the second round of the League Cup in which we are at home to Millwall, are now available at the club's offices in Kenilworth Road.

They are available only for the centre stand at 10s each, and season ticket-holders are asked to submit 'Cup ticket number 2' with their applications, accompanied by the correct remittance, and stamped, addressed envelope if application is made by post.

# The Vauxhall Breed's got style.





Luton's leading newsagents

# HOUGHTONS

CONFECTIONERS · TOBACCONISTS  
GREETINGS CARD SPECIALISTS

- ★ 16 The Parade, Hill Rise
- ★ 3 Ashwell Parade, Sundon Park
- ★ 82 Putteridge Road, Stopsley
- ★ 253 Birdsfoot Lane
- ★ 150 Sundon Park Road
- ★ Jansel House, Stopsley
- ★ 217 Dunstable Road
- ★ 8 Hillborough Crescent, Houghton Regis

Whenever you are near – pay us a visit  
We will be pleased to serve you

**EVENING POST**  
ENTER  
'CROSS THE BALL'  
EVERY WEEK  
AND WIN  
BIG MONEY  
PRIZES



## RICHARDSON and BOTTOMS

LIMITED

*Builders  
and  
Contractors*

107, BISCOT RD.

Luton

Telephone: 25628

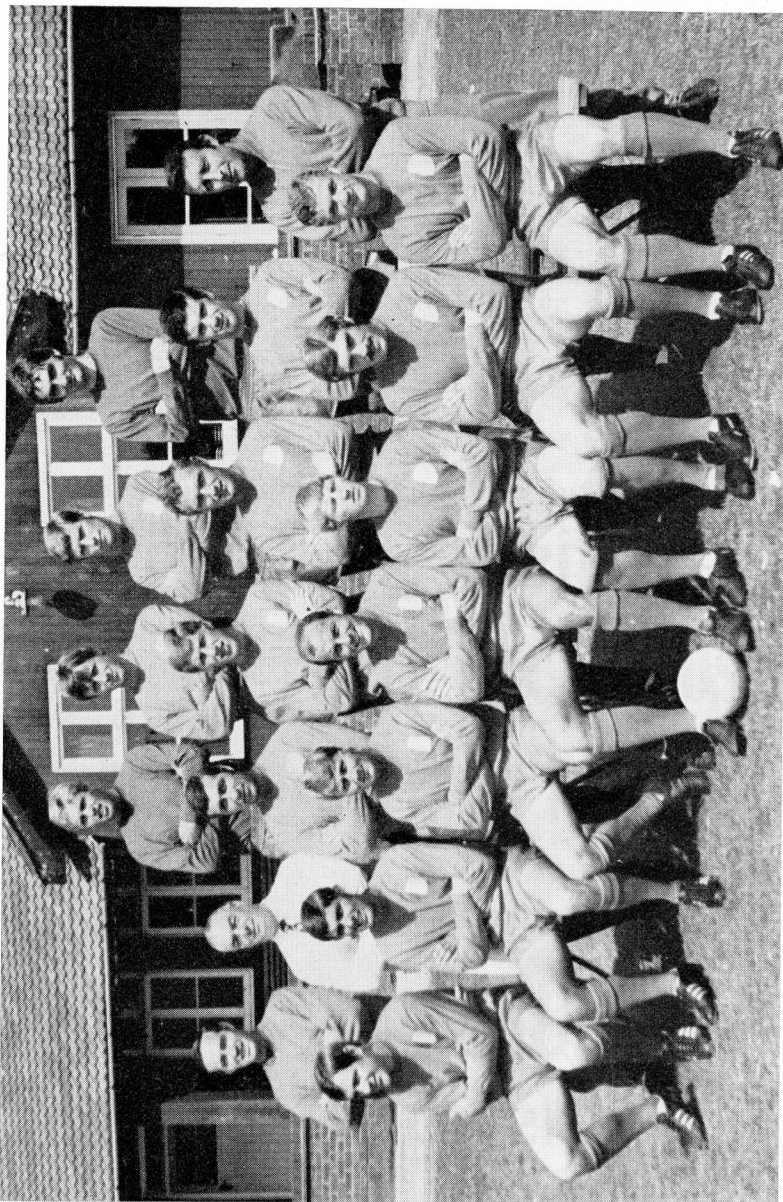
**FOOTBALL**  
**plus**  
**LUXURY**

—this is the aim  
of the  
**HATTERS' CLUB**



**OPEN DAY  
IS TODAY**

*Why not join?*



*Back row (left to right):* Ray Goddard, Barry Dyson, Peter Allen, Steve Bowtell, Charlie Simpson (physiotherapist), Peter Brabrook, Tommy Taylor, Dave Harper, Mick Bullock, Peter Angell (Trainer).  
*Centre row:* Jimmy Bloomfield (Manager), Terry Parmenter, Terry Mancini, Malcolm Slater, Barrie Fairbrother, Dennis Rofe.  
*Front row:* Mick Jones, Dick Plume, Terry Parmenter, Terry Mancini, Malcolm Slater, Barrie Fairbrother, Dennis Rofe.

## THE TURNING TIDE FOR ORIENT

By Tony Pullein

These last three years, life has been pretty tough for the Orient. Since their relegation from the Second Division, they have faced an almost continual threat of further demotion to Division IV.

Worse, off field, financial problems faced them, and there was talk of moving the club to Basildon or Romford in the hope of gaining better support.

At one time, they placed all their players, except goalkeeper, Ray Goddard, on the transfer list to try to raise cash.

The situation seems to have eased a little recently, though, and their encouraging start – they won their opening match 3–0 at Rochdale and beat Halifax 1–0 – will have boosted the spirits of the Brisbane Road lads.

Quick off the mark was Barry Dyson, who scored one of their goals and whose experience could lead them to a healthier position this season.

Barry started with Bury, didn't make the senior side, but really made his name at Tranmere.

In four seasons he led their scorers three times, banging home a total of 101 goals in 174 League games before moving to Crystal Palace. His next stop was Watford, where he was top scorer in 1967–68, then he switched to Orient to top their list last term.

### England caps

Peter Brabrook, the former Chelsea and West Ham star, returned to the side this season after nearly a year's absence through injury. Brabrook won three England caps in his Chelsea days and he made nine appearances for the Under 23s. He now has well over 400 League games behind him.

Former England schoolboy international Mick Bullock was only 16 when he made his debut in the First Division for Birmingham City – and he hit the winning goal against Manchester United!

Somehow, though, he couldn't find consistency at St Andrews and it was only after joining Oxford United, where he was leading scorer in their Third Division promotion side two seasons ago, that he began to establish himself. He joined Orient last season.

### Took the plunge

Malcolm Slater, a Scottish amateur international, started as an unpaid player with Celtic and took the professional

plunge at Montrose. He came south, with Southend United, in 1964 then, after a couple of seasons, linked with Orient in 1966 and has been a fixture in their side since.

Peter Allen went to Orient after a spell as a Spurs' amateur, was given his big chance in the League side in 1965–66 and has remained there since. He chalked up his 100th League game last season.

Another local lad is Dennis Rofe who claimed a regular place last season. Though a left-back, he's become adept at popping in a goal or two. He hit one on the opening day and, you may recall, he equalised for Orient here last season.

### Remember this game?

LUTON (1) 2	ORIENT (1) 1
Branston	Rofe
Sheffield	13,915

**Luton:** Davie; Dougan, Bannister; Slough, Branston (Potter), Moore; Ryan, Allen, Sheffield, Lewis, Rioch.

**Orient:** Goddard; Howe, Rofe; Harper, Mancini, Taylor; Slater (Massey), Bullock, Allen, Dyson, Parmenter.

Most of that Orient side will probably return here today. The half-back line will almost certainly remain. David Harper, one-time England youth cap, has derived vast experience from over 300 League games with Millwall, Ipswich, Swindon and Orient whom he joined two seasons ago.

Terry Mancini was an established League player with Watford until he emigrated to South Africa in 1966, but he returned within a year to sign for Orient.

### Local discovery

Tommy Taylor is another local discovery who gained himself a regular place last season and England youth caps, too.

Richard Plume, who had a few games in Millwall's Second Division side, signed

*Continued on page 18*





Malcolm Macdonald in action again, but frustrated this time by Peterborough goalkeeper, Mick Drewery, as Laurie Sheffield and Graham French look on. Picture by courtesy of Home Counties Newspapers Ltd.



## OUR NEW HATTERS' CLUB

By Harry Haslam, Entertainments Manager

Today marks the official opening of our new Hatters' Club which we hope will be a real success amongst our members.

Arrangements for today are as follows: The Club was open from 12 noon to 2.55 p.m. Hot snacks available throughout this period. The bar will open from 4.45 p.m. to 5.30 p.m. to give members the opportunity of a drink before going home.

The Club room will re-open at 6.00 p.m. to 11.30 p.m. when hot snacks and evening meals can be purchased.

For the nights' entertainment there will be dancing to Tommy Thompson and his music. There is also cabaret tonight by a top London artiste.

### Opening arrangements

Throughout next week the arrangements for opening will be as follows:

**Monday** – 12 noon to 3 p.m. (hot snacks available) 6 p.m. to 11.30 p.m. (hot meals and snacks available). Dancing and entertainment with Tommy Thompson.

**Tuesday** – We will be open from 12 noon to 3 p.m. (hot snacks available). The bar will be open from 6 to 7.25 p.m. prior to match v Halifax, again hot snacks will be available. The Club will re-open at 9.15 p.m. till 11.30 p.m. (hot meals and snacks) evenings entertainment provided by Tommy Thompson and his music.

**Wednesday, Thursday and Friday** –

12 noon to 3 p.m. (hot snacks available) 6 p.m. to 11.30 p.m. (hot meals and snacks available) Dancing and entertainment with Tommy Thompson.

**Saturday's** programme will be the same as today.

Have you remembered to buy your Luton Town football calendar? These are proving very popular amongst our supporters at 5s each and can be obtained either from the Supporters' Shops on the ground or from the football offices.

### BONANZA WINNERS

7251 Mr Todd, 101 Sandridge Road, St. Albans. £10.

7206 Mr A. J. Webb, 39 Marston Gardens, Luton. 1 'Goalie' Radio.

3543 Mr M. Leary, 314 Hatfield Road, St. Albans, 1 'Goalie' Radio.

0117 Mr L. Childs, 140 Selbourne Road, Luton. 2 Tickets for the Odeon.

3589 Unclaimed. 2 Tickets for the Odeon.

### Our Supporter of the week

*Michael Lamont, 25 Beech Road, Luton.* Mr Lamont will shortly be leaving Luton to live in America. He has supported Luton since they won promotion to the First Division. He attended every round of the Cup including the Final v Notts Forest.

One game that particularly stays in his memory was the game v Manchester City when Denis Law scored 6 goals and the game was abandoned. In the replay Luton won 3-1.

Going to live in America will not mean the end of Mr Lamont's support, as he has asked us to send programmes off to him regularly.

This week's mascot is five years old Andrew Cumming, who lives at 1 Sanderson Road, Westoning, Beds.

### LUTON TOWN FC POOL

#### This Weeks' Lucky Numbers

**Monday:** £20-10048; £15-54593; £5-18515; £5-30671; £2-00154; £2-10252; £1-17543.

**Tuesday:** £20-27169; £15-21388; £5-56540; £5-04411; £2-53123; £2-26911; £1-42868.

**Wednesday:** £20-06312; £15-33769; £5-15753; £5-48720; £2-02296; £2-09361; £1-15146.

**Thursday:** £20-39311; £15-08507; £5-27891; £5-30983; £2-45158; £2-17822; £1-31105.

**Friday:** £20-46635; £5-23602; £5-30336; £5-09244; £2-37186; £2-41299; £1-06564.

**Saturday:** £20-02835; £15-18974; £5-15662; £5-21026; £2-18132; £2-09731; £1-23285.

## Coming Matches

DIVISION III

TUESDAY, 26th AUGUST

LUTON TOWN

v

HALIFAX TOWN

KICK-OFF 7.30 p.m.

*Prices of admission:*

Centre Stand 10s, Wing Stand 8s, Enclosure, Bobbers' Stand and Oak Road Terrace 6s, (Children 3s), Kenilworth Road Terrace 5s, (Children 2s 6d).

DIVISION III

SATURDAY, 30th AUGUST

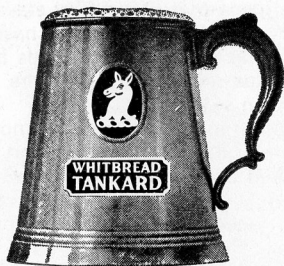
GILLINGHAM

v

LUTON TOWN

at Priestfield Stadium, Gillingham

KICK-OFF 3 p.m.



WHITBREAD  
TANKARD

cool,  
clear, refreshing

Available in all Bars

## NEWS FROM THE SUPPORTERS'

### CLUB

By FRANK SHEPHARD

The National Federation of Football Supporters' Clubs, to which we are affiliated, was founded in 1927, and has grown to some 300 clubs, both big and small.

These range from the Liverpools to the Stony Stratfords, and all help their parent clubs to the tune of raising over £1,000,000 each year.

#### 700,000 represented

It represents some 700,000 football supporters and you can become one of them by joining the Luton Town Supporters' Club today. Fee is only 1s 2d or life membership, £1 1s. Your membership card will enable you to visit many of the fine social clubs in the Federation.

I take this opportunity of wishing the Hatters' Club every success. The game lasts only for 90 minutes, so the more chances there are to meet socially and keep the new spirit of the club alive, the better.

#### Calendar a must

Our shops on the ground have a large selection of books, programmes etc. A MUST for all supporters is the Town FC's calendar which is ideal for youngsters who collect autographs since it includes photographs of all the senior players. Also on sale are lapel badges, 2s 6d each, rosettes 2s and rattles 7s 6d.

Plans are being made to rejuvenate the Junior Section and I shall tell you of this move in future programmes.

#### Open at 6 p.m.

Will members please note that the Supporters' Club premises will be open at 6 p.m. after each first team game.

Today, we welcome members of the Orient Supporters' Club, and especially their hard-working secretary, Mrs Gimson, who always finds time to support her team away from home.

## £25,000 prizes paid so far this season

I make no apology for appealing to you through this programme to back us in our Pools efforts.

We, as a club, are dedicated to success. Every season we must make a further step forward, and in the higher spheres it's money that counts. We know that only the best is good enough, and having the best depends on the wholehearted support of our fans. In urging you to become an agent and participate in our Pool, I want to emphasise how much it can mean to us. On its success depends a glorious future for the club and that means it ultimately depends on you.

If you can assist us you will be contributing invaluable help in making this club what you have always dreamed it could be. When I tell you for every 1s. ticket sold, 6d. will go to making Luton Town a bigger and better club, with ground and improved amenities for supporters. Above all it will enable us to strengthen the side when it becomes necessary and build a team capable of higher grades of football. The prospects are breathtaking, all we need is your co-operation.

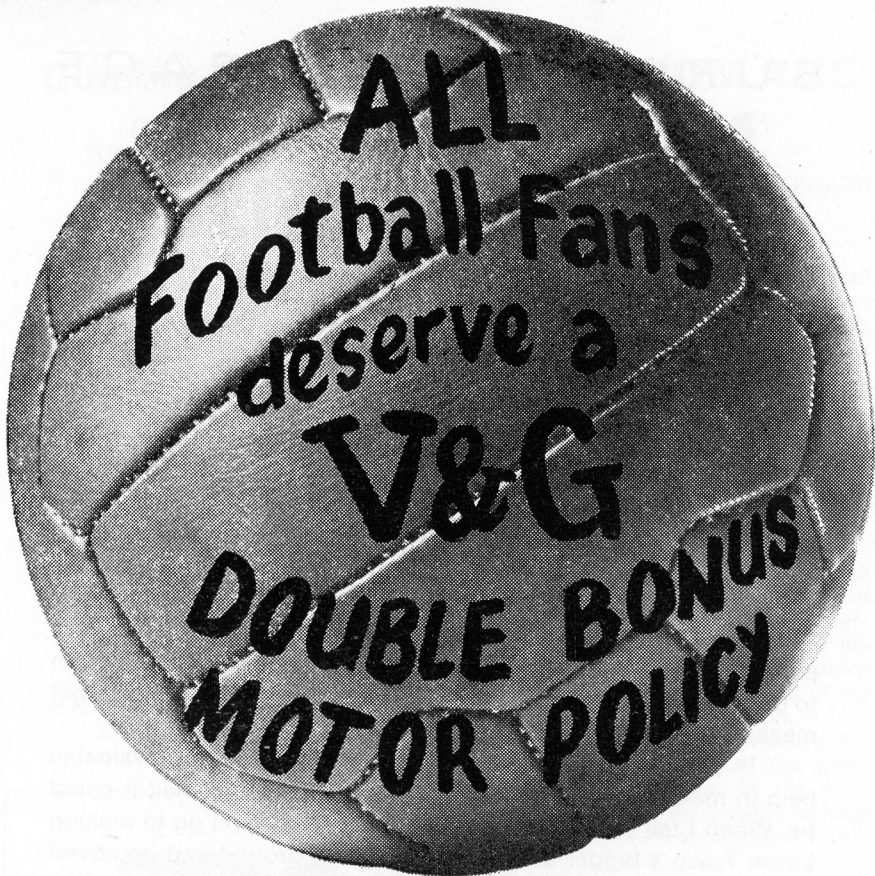
Go to the Pools Office NOW! Start an agency with ten or more members. Or fill in the form below and post or hand it in.

Please note that our new office is at 231 Dunstable Road, Luton.  
Telephone: Luton 30748

Name.....

Address.....





**THE V&G  
DOUBLE BONUS  
MOTOR INSURANCE POLICY  
GIVES FAIRER TERMS  
TO EVERY DRIVER**

For further information contact your local officially appointed V & G Insurance Broker, or write or phone the address below.

**V&G THE VEHICLE & GENERAL  
GROUP OF  
INSURANCE COMPANIES**

Group Headquarters,  
Administration & Operations:  
Bushey House,  
High Street, Bushey,  
Hertfordshire.  
Tel: 01-950 4311.

THE VEHICLE & GENERAL INSURANCE CO. LTD.  
LIFE, CASUALTY & GENERAL INSURANCE CO. LTD.  
AUTOMOBILE & GENERAL INSURANCE CO. LTD.  
THE GENERAL & COMMERCIAL MOTOR INSURANCE CO. LTD.  
METROPOLITAN GENERAL INSURANCE CO. LTD.  
WORLD AUXILIARY INSURANCE CORPORATION LTD.  
PIONEER LIFE ASSURANCE CO. LTD.



**PERSONALITY PROFILE**

**2 TONY READ**

Is probably the only contemporary goal-keeper who can claim to have scored a hat-trick in League football and, at one time, he had a good deal of experience at inside-right and centre-forward.

It all began when he was with Peterborough Utd, who had five goalkeepers on their books at the same time and, obviously, could not find employment for all of them.

However, the days of Tony figuring as an attacker are over and he began this season as the Town's first choice in goal, partly on the strength of his fine displays at the end of last season and partly through being impressive in private trials and pre-season matches.

His form so far has shown that the confidence shown in him has not been misplaced, as clean sheets in the League matches played, show only too well.

Last season, too, he began as the man in possession but, for some time, was handicapped by a dislocated finger, which finally necessitated an operation and led to the Town buying Sandy Davie.

Born at Haydock, Tony went to Sheffield Wednesday for his first League chance and then followed that unusual spell at Peterborough where, for a long time, he led their Reserves' attack.

**RESULTS SO FAR**

**DIVISION III**

**Bournemouth 0 Luton Town 1**

Read; Ryan, Bannister; Keen, Branston, Slough; Collins, Macdonald, Sheffield, Allen, French. Substitute: Moore. Scorer: Macdonald.

**LEAGUE CUP REPLAY**

**Luton Town 5 Peterborough Utd. 2**

Read; Ryan, Bannister; Keen, Branston, Slough; Lewis, Macdonald, Sheffield, Allen, French. Substitute: Stevenson. Scorers: Lewis (2 pen), Allen, Branston, Macdonald.

**HALF TIME SCORES**

**FIRST LIST**

<b>A</b> Arsenal	.....	Notts. F.	.....
<b>B</b> Crystal P.	.....	Tottenham H.	.....
<b>C</b> Derby Co.	.....	Stoke C.	.....
<b>D</b> Ipswich T.	.....	Coventry	.....
<b>E</b> Leeds Utd.	.....	Newcastle	.....
<b>F</b> Liverpool	.....	Burnley	.....
<b>G</b> Man. City	.....	Everton	.....
<b>H</b> Soton	.....	Chelsea	.....
<b>K</b> Sunderland	.....	Sheff. Wed.	.....
<b>L</b> West Ham	.....	Albion	.....
<b>M</b> Wolves	.....	Man. Utd.	.....
<b>N</b> A. Villa	.....	Swindon T.	.....

**SECOND LIST**

<b>A</b> Blackburn	.....	Hull C.	.....
<b>B</b> Blackpool	.....	Birmingham	.....
<b>C</b> Bolton W.	.....	Preston	.....
<b>D</b> Bristol C.	.....	Cardiff C.	.....
<b>E</b> Carlisle Utd.	.....	Middlesbro	.....
<b>F</b> Charlton A.	.....	Watford	.....
<b>G</b> Leicester C.	.....	Norwich C.	.....
<b>H</b> Oxford Utd.	.....	Portsmouth	.....
<b>K</b> Q.P.R.	.....	Millwall	.....
<b>L</b> Sheff. Utd.	.....	Hudd'fld T.	.....
<b>M</b> Barnsley	.....	Stockport	.....
<b>N</b> Brighton	.....	Bourn'th	.....

**THIRD LIST**

<b>A</b> Fulham	.....	Gillingham	.....
<b>B</b> Halifax T.	.....	Bradford C.	.....
<b>C</b> Mansfield	.....	Walsall	.....
<b>D</b> Reading	.....	Bristol R.	.....
<b>E</b> Rochdale	.....	Bury	.....
<b>F</b> Rotherham	.....	Doncaster	.....
<b>G</b> Southport	.....	Barrow	.....
<b>H</b> Torquay	.....	Plymouth	.....
<b>K</b> Tranmere	.....	Shrewsbury	.....
<b>L</b> Bradford	.....	Grimsby T.	.....
<b>M</b> Crewe A.	.....	Brentford	.....
<b>N</b> Norwich Res.	.....	Luton Res	.....



for Orient at the end of last season, and was substitute last Saturday.

Ray Goddard didn't get a senior game at Fulham but has been the O's keeper for the past two seasons. Full-back Mike Jones also met with little success at Fulham, or Chelsea, but has settled in well after four years at Brisbane Road, and has begun the season in the number 2 shirt.

### The full record

Luton's League record against Orient is:

	P	W	D	L	For	Ag	Pts
Home	11	6	0	5	21	17	12
Away	11	1	6	4	8	16	8
	22	7	6	9	29	33	20

Manager of Orient is Jimmy Bloomfield, an inside-forward of great skill who gave years of valuable service to West Ham.

Then came a spell with Plymouth Argyle before he accepted the player-managership of Orient.

He turned down a tempting offer from Reading last season to complete his job at Brisbane Road and is now concentrating on off-field activities and coaching.

### RICKY NICHOLSON

RICKY NICHOLSON is a referee who appreciates the players' point of view. He was an amateur with Spurs, Stockport, Halifax, Mossley and Congleton Town and took up refereeing five years before his playing days ended in 1951.

"To ensure I would maintain contact with the game when I finally packed away my boots," he says.

He took his first step up the ladder in the Manchester Amateur League and was appointed to the League linesmen's list in 1957, while he was operating in the Cheshire League.

His promotion as a League referee came in 1964 and the following year he was given the Wales v Ireland Youth International.

During the week, he can be found at his Manchester office controlling his firm Messrs F. M. Nicholson (Materials Handling) Ltd of which he is managing director.

His ambition is to win promotion to the FIFA panel, as he enjoys travelling and has knowledge of some languages.

## Tables to Tuesday, 19th August, 1969 (not inclusive)

DIVISION III								FOOTBALL COMBINATION									
	P	W	D	L	F	A	Pts		P	W	D	L	F	A	Pts		
Tranmere R.	...	2	2	0	0	6	0	4	West Ham	...	2	2	0	0	5	0	4
<b>Luton Town</b>	...	<b>2</b>	<b>2</b>	<b>0</b>	<b>0</b>	<b>4</b>	<b>0</b>	<b>4</b>	Swansea T.	...	2	2	0	0	2	0	4
<b>Orient</b>	...	<b>2</b>	<b>2</b>	<b>0</b>	<b>0</b>	<b>4</b>	<b>0</b>	<b>4</b>	Southampton	...	2	1	1	0	8	2	3
Reading	...	2	2	0	0	5	2	4	Ipswich T.	...	2	1	1	0	4	1	3
Walsall	...	2	1	1	0	5	1	3	Bristol R.	...	2	1	1	0	3	2	3
Bradford C.	...	2	1	1	0	2	1	3	Leicester C.	...	2	1	1	0	4	3	3
Brighton	...	2	1	1	0	2	1	3	Q.P.R.	...	2	1	1	0	5	4	3
Barnsley	...	2	1	1	0	4	3	3	Tottenham H.	...	1	1	0	0	1	0	2
Doncaster R.	...	2	1	0	1	3	2	2	Arsenal	...	2	1	0	1	4	1	2
Bristol R.	...	2	0	2	0	3	3	2	Cardiff C.	...	1	1	0	0	3	1	2
Bury	...	2	1	0	1	4	4	2	<b>Luton Town</b>	...	<b>1</b>	<b>1</b>	<b>0</b>	<b>0</b>	<b>4</b>	<b>2</b>	<b>2</b>
Halifax T.	...	2	1	0	1	1	1	2	Oxford Utd.	...	1	1	0	0	2	1	2
Rotherham Utd.	...	2	1	0	1	4	4	2	Bristol C.	...	2	1	0	1	6	4	2
Shrewsbury T.	...	2	1	0	1	1	1	2	Bournemouth	...	2	0	2	0	3	3	2
Torquay Utd.	...	2	1	0	1	3	3	2	Chelsea	...	2	1	0	1	3	4	2
Mansfield T.	...	2	1	0	1	1	2	2	Plymouth A.	...	2	1	0	1	3	5	2
Rochdale	...	2	1	0	1	1	3	2	Swindon T.	...	2	0	1	1	2	3	1
Fulham	...	2	0	1	1	0	1	1	Gillingham	...	1	0	0	1	1	2	0
Southport	...	2	0	1	1	0	4	1	Norwich C.	...	2	0	0	2	1	3	0
Bournemouth	...	2	0	0	2	0	2	0	Peterborough Utd.	...	2	0	0	2	2	7	0
Gillingham	...	2	0	0	2	1	4	0	Walsall	...	2	0	0	2	2	7	0
Plymouth A.	...	2	0	0	2	1	3	0	Crystal P.	...	1	0	0	1	0	2	0
Stockport Co.	...	2	0	0	2	0	4	0	Fulham	...	2	0	0	2	0	2	0
Barrow	...	2	0	0	2	0	6	0	Birmingham C.	...	1	0	0	1	0	3	0
									Northampton T.	...	1	0	0	1	0	6	0
									Reading	...	0	0	0	0	0	0	0

# We're top of the league!

Team effort.

That's what makes Skefko the leading manufacturer of rolling bearings in the country. We're working together to make even better bearings. Faster. Cheaper. And always on time.

What's in it for us? A good secure job for a start. And good benefits and promotion prospects too. Take it from us - Skefko's a great company to team up with.



# SKF

THE SKEFKO BALL BEARING CO., LTD. LUTON, BEDFORDSHIRE



# LUTON TOWN

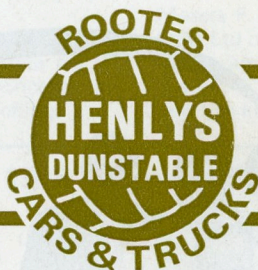
Colours: Shirts White  
Shorts Black

*Coach:* JIMMY ANDREWS

	1	
	<b>Tony Read</b>	
	2	3
	<b>John Ryan</b>	<b>Jack Bannister</b>
4	5	6
<b>Mike Keen</b>	<b>Terry Branston</b> <i>Captain</i>	<b>Alan Slough</b>
7	9	11
<b>John Collins</b>	<b>Laurie Sheffield</b>	<b>Graham French</b>
	8	10
	<b>Malcolm Macdonald</b>	<b>Keith Allen</b>

*Sub:* **Brian Lewis**

Referee  
F. M. NICHOLSON  
*(Urmston, Manchester)*



Linesmen  
R. G. BALDWIN *(Corby)*  
Red flag  
L. BIRBECK  
*(Langley Park, Co. Durham)*  
Yellow Flag

*Sub:* **Richard Plume**

	10	8
	<b>Barry Dyson</b>	<b>Mick Bullock</b>
11	9	7
<b>Peter Brabrook</b>	<b>Peter Allen</b>	<b>Malcolm Slater</b>
6	5	4
<b>Dave Harper</b>	<b>Terry Mancini</b>	<b>Tommy Taylor</b>
3		2
<b>Dennis Rofe</b>		<b>Mick Jones</b>
	1	
	<b>Ray Goddard</b>	

Colours: Shirts Red  
Shorts Red

*Manager:* JIMMY BLOOMFIELD

# ORIENT

Result: LUTON TOWN

ORIENT