



# LUTON TOWN

## FOOTBALL CLUB

Telephone: Luton 23151



DIVISION THREE

# v HALIFAX TOWN

Tuesday 26th August 1969 kick-off: 7.30 p.m.

Official Programme: Price 1/-



## FIXTURES 1969

### DIVISION THREE

Date	Opponents	Attendance	Result
<b>August</b>			
Sat 9	BARROW	12,080	(H) 3-0
Wed 13	FLC1 Peterboro'	10,249	(A) 1-1
Sat 16	Bournemouth	9,735	(A) 1-0
Tues 19	FLC1 PETERBORO'	13,105	(H) 5-2
Sat 23	ORIENT	13,761	(H) 3-2
Tues 26	HALIFAX T.		(H)
Sat 30	Gillingham		(A)
<b>September</b>			
Tues 2	FLC2 MILLWALL		(H)
Sat 6	BRISTOL R		(H)
Sat 13	Bradford City		(A)
Tues 16	Southport		(A)
Sat 20	SHREWSBURY		(H)
Wed 24	League Cup 3		
Sat 27	Plymouth Argyle		(A)
Tues 30	Walsall		(A)
<b>October</b>			
Sat 4	STOCKPORT		(H)
Tues 7	BOURNEMOUTH		(H)
Sat 11	Doncaster Rovers		(A)
Wed 15	League Cup 4		
Sat 18	Brighton & H.A.		(A)
Sat 25	TORQUAY U.		(H)
Wed 29	League Cup 5		
<b>November</b>			
Sat 1	Rotherham U.		(A)
Sat 8	BARNSLEY		(H)
Sat 15	FA Cup 1		
Wed 19	League Cup S.F.		
Sat 22	ROCHDALE		(H)
Tues 25	FULHAM		(H)
Sat 29	Mansfield Town		(A)
<b>December</b>			
Wed 3	League Cup S.F.		
Sat 6	FA Cup 2		
Sat 13	BRADFORD C.		(H)
Sat 20	Bristol Rovers		(A)
Fri 26	Orient		(A)
Sat 27	GILLINGHAM		(H)
<b>1970</b>			
<b>January</b>			
Sat 3	WALSALL (3)		(H)
Sat 10	Shrewsbury Town		(A)
Sat 17	PLYMOUTH A.		(H)
Sat 24	Bury (4)		(A)
Sat 31	Stockport County		(A)
<b>February</b>			
Sat 7	DONCASTER (5)		(H)
Sat 14	Barrow		(A)
Sat 21	Torquay United (6)		(A)
Sat 28	BRIGHTON		(H)
<b>March</b>			
Tues 3	TRANMERE R.		(H)
Sat 7	Rochdale (LCF)		(A)
Wed 11	Reading		(A)
Sat 14	MANSFIELD (SF)		(H)
Tues 17	BURY		(H)
Sat 21	Tranmere Rovers		(A)
Fri 27	ROTHERHAM U.		(H)
Sat 28	READING		(H)
Mon 30			
Tues 31	Barnsley		(A)
<b>April</b>			
Sat 4	Halifax Town		(A)
Wed 8	Fulham		(A)
Sat 11	FA Cup Final		
Tues 14	SOUTHPORT		(H)

### FOOTBALL COMBINATION

Date	Opponents	Attendance	Result
<b>August</b>			
Sat 16	PETERBORO'	1,326	(H) 4-2
Sat 23	Norwich City		(A) 0-0
Sat 30	TOTTENHAM H.		(H)
<b>September</b>			
Sat 6	Gillingham		(A)
Sat 13	BOURNEMOUTH		(H)
Tues 23	Northampton Town		(A)
Sat 27	SWINDON T.		(H)
<b>October</b>			
Wed 1	Crystal Palace		(A)
Sat 11	BIRMINGHAM		(H)
Sat 25	Tottenham H. (Cup)		(A)
<b>November</b>			
Sat 1	SOUTHAMPTON		(H)
Tues 4	Queens Park Rangers		(A)
Sat 8	Leicester City		(A)
Tues 18	WALSALL (Cup)		(H)
Sat 22			
Sat 29	LEICESTER (Cup)		(H)
<b>December</b>			
Tues 2	Walsall		(A)
Sat 6	IPSWICH T.		(H)
Sat 13	Bristol Rovers		(A)
Tues 16	BIRMINGHAM (Cup)		(H)
Sat 20	Arsenal		(A)
Sat 27	Northampton (Cup)		(A)
Tues 30	Walsall (Cup)		(A)
<b>1970</b>			
<b>January</b>			
Sat 10	CHELSEA		(H)
Sat 17	Plymouth Argyle		(A)
Tues 20	TOTTENHAM (Cup)		(H)
Sat 24	READING		(H)
Tues 27	Birmingham (Cup)		(A)
Sat 31	NORTHAMPTON (Cup)		(H)
<b>February</b>			
Wed 4	Leicester City (Cup)		(A)
Sat 7			
Sat 14	Fulham		(A)
Sat 21	SWANSEA T.		(H)
Wed 25	Cardiff City		(A)
Sat 28			
<b>March</b>			
Sat 7	OXFORD UNITED		(H)
Sat 14			
Sat 21	West Ham United		(A)
<b>April</b>			
Sat 4	BRISTOL C.		(H)

© Football League Ltd, 1969



## LUTON TOWN FOOTBALL AND ATHLETIC CO, LTD

KENILWORTH ROAD, LUTON, BEDFORDSHIRE  
TELEPHONE 0582 23151

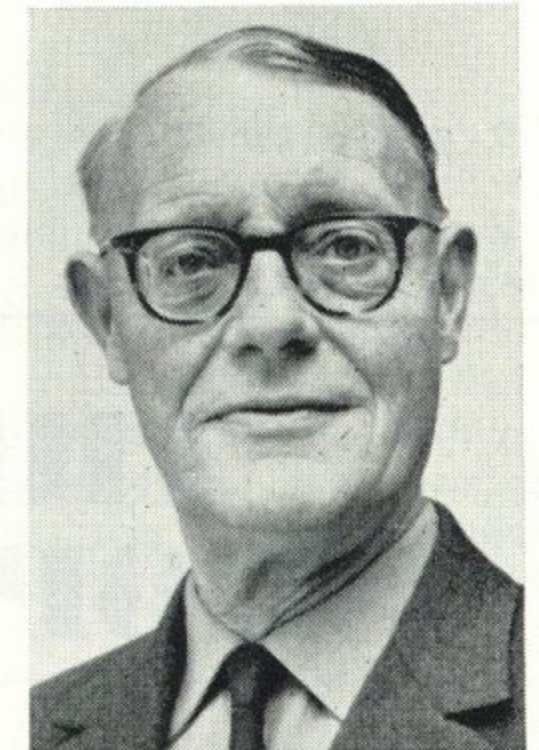
Established 1885      Incorporated 1897  
First Professional Side Season 1891-1892  
Football League Division III Champions 1936-37  
Football League Division II Runners-up 1954-55  
FA Challenge Cup Finalists 1958-59  
Football League Division IV    Champions 1967-68

OFFICIAL  
PROGRAMME  
26 AUGUST  
1969

New Series  
Vol. 1. No. 5.

Directors: A. T. HUNT, *Chairman*, L. S. HAWKINS, *Vice-Chairman*,  
J. A. C. BAIN, R. I. BURR, T. HODGSON, H. RICHARDSON  
Secretary: R. Readhead      Manager: Alec Stock  
Hon. Medical Officers: Dr C. J. Buckingham, M.B., B.S. and  
Dr P. J. Burrows, M.B., B.Ch., D.Obst., R.C.O.G.  
Hon. Dental Surgeon: A. Hargreaves, Esq.  
Hon. Solicitor: E. Waller, Esq.      Auditors: Messrs Keens, Shay, Keens & Co.

*Eric Pugh's Page*



For many connected with the Town club, Halifax will bring back pleasant memories because it was on their Shay ground on 20th April 1968, that Luton secured the two points that ensured their return to the Third Division. Not that a great many supporters saw the fulfilment of the high hopes that had been entertained all that season for the total attendance was only 5,091.

### Enthusiasm

Four days later, amidst scenes of enthusiasm by a crowd of 18,904, the Town clinched the championship by beating Crewe.

Now, they have been re-joined by Halifax in the upper circle, with the Yorkshire team having fought a grim battle last season to finish in second place to Doncaster Rovers.

In fact, the top of the Fourth Division provided a Yorkshire triumph because three of the four clubs promoted were from that county.

### Shrewdly managed

When a team makes an upward step, there is always a query about whether

they will be strong enough to maintain their new status.

However, Halifax are shrewdly managed by Alan Ball senior, who was highly regarded as a coach before he took his first managerial appointment at The Shay and who has gathered about him what looks like a good blend of experience and youth.

In previous meetings with the Town, Halifax have not been markedly successful and, as had the first League opponents of the season, Barrow, they have no reward to show for three visits to Kenilworth Road.

### Now for Millwall

That fine victory over Peterborough



# CONNELLS

Auctioneers, Surveyors  
Valuers and Estate Agents

5, Upper George Street, Luton

Telephone: 31261 for

## Houses and Bungalows

COUNTRY HOUSES, COMMERCIAL AND  
INDUSTRIAL PREMISES, COMPULSORY  
PURCHASE NEGOTIATIONS IN

*Luton and Surrounding Districts*

Branch Offices throughout  
HERTFORDSHIRE, BEDFORDSHIRE, BUCKINGHAMSHIRE  
and at 62, GROSVENOR STREET, LONDON, W.1.



## THE ONE STOP SHOPPING CENTRE for

Hardware, Electrical, Men's Wear, Fuel, Catering,  
Footwear, Bookshop, Drapery, Furnishing, Toys &  
Sports, Grocery, Greenfruit and Butchery with Credit  
Facilities to suit your requirements.

PLUS DIVIDEND STAMPS

### SUPERSTORE

4 NEW BEDFORD ROAD  
LUTON. Tel: 21171

**LUTON CO-OPERATIVE SOCIETY LTD**



United, gives the Town the right to entertain Millwall in the second round of the League Cup, and this is an intriguing meeting that should pack the terraces.

Like Luton, Millwall have had the chastening experience of Fourth Division football, though it lasted no longer than one season, and they are now respected members of the Second Division.

#### Trial of strength

Ambitions of the Town in this direction are widely known and it will be an interesting trial of strength as well as what everybody hopes will be a pointer to the future.

With permission of the Football League, expressly because of the clash there would have been with the Watford-Liverpool game had the fixture remained on the original date, the match has been brought forward to next Tuesday, kick-off 7.30 p.m.

#### Busy time for players

This, of course, is a busy time for the players, with the programme having been further crowded by the necessity of a replay with Peterborough.

At the first time, a cup run always inspires confidence within the club, and hopes must be high that the team will emulate their progress of last season and reach the third round of what has now become an exciting competition.

#### Hoping for a repeat

Before they go cup-fighting again, the Town go into Kent next Saturday in search of a repeat of their 3-1 victory over Gillingham last season.

Having overcome Bournemouth at Dean Court in such thoroughly proficient, professional style, they must be fancied for further success against the 'Gills,' who have made an unrewarding start to the season.

Gillingham are managed by Basil Hayward, who spent some time in charge of Bedford Town, and there is a distinct Bedfordshire flavour about his playing staff which contains several former Eagles and, of course, an ex-Town player in Gordon Riddick.

#### Sponsorship scheme

Although the scheme has yet to be finalised, the Town must be showing

keen interest in the proposed sponsorship by a major brewery company of a pre-season competition which promises to be most rewarding financially.

Basic idea is a competition for eight League sides, probably the highest scorers in each division. On the figures at the end of last season, the Town and Watford would have qualified from the Third Division, and the new scheme gives them incentive to go for the goals this time.

#### Rewards are rich

So far as money is concerned, it seems that each participating club will receive £4,000 while the League and the Football Association would receive £25,000 each.

The League feel that there is a place for such a tourney in the football calendar, and my view is that anything that steps up the goal output and goes towards mitigating the tendency to blanket defence, is not only to be welcomed, but to be encouraged to the full.

#### Added meaning

Such a scheme would also have the merit of giving added meaning to the pre-season programme which has advanced so far since the old days of public practice matches - 'Probables v Possibles'.

In addition to the sponsorship, there should be rich pickings to be had through the turnstiles because one can envisage some most attractive pairings coming about.

#### DIVISION III

SATURDAY, 30th AUGUST

### GILLINGHAM

v

### LUTON TOWN

at Priestfield Stadium, Gillingham

KICK-OFF 3 p.m.

#### OUR COVER PICTURE

Back Row: Max Dougan, Mike Keen, Keith Allen, Terry Branston, Sandy Davie, Tony Read, Alan Slough, Fred Jardine, John Moore,  
Front Row: Graham French, Jack Bannister, Brian Lewis, Laurie Sheffield, Mike Harrison, Bruce Rioch.



*From Bob's Office*

Our new-style, official programme, has been well received by supporters, several of whom have taken the trouble to write to congratulate us on the vast improvement.

Mrs S. D. Robinson, 72 Meryick Avenue, writes, 'The new-style programmes are the best ever produced by the Town and are better than those sold by other clubs. I am pleased that we have more notes to read and also like the high quality of the programmes.'



Bob Readhead, Secretary

#### More sales needed

What we are anxious to do is to increase the sale of the programmes, percentage-wise, as compared with the attendance at each match.

At the moment, it is running at around 50 per cent, which is not economic, and we are ambitious to raise it to as near 90 per cent as is possible.

#### Sorry youngsters

We can still find employment for more sellers, but I must emphasise that we have to set a minimum age of 15. Boys of 11 and 12 have applied and, while we appreciated their interest and enthusiasm, and do not like turning them down, we just cannot accept them at that age.

Official sellers, both outside and inside the ground have been issued with blue coats and also blue hats. So, there should be no difficulty in spotting them as you approach the ground.

#### Match ball donors

To those people who have offered us match balls, we give our thanks, and would like to hear from many more, willing to be generous in this direction.

Last season, several clubs and associa-

tions hit upon a bright idea which was of benefit to us both. They presented us with a ball which was autographed by the players after the match and returned to the club concerned.

They then raffled it and made for themselves a useful profit. It seems an idea that is worth while considering.

#### Millwall clash

Next first team game on this ground will be next Tuesday when Millwall will be the visitors in the second round of the League Cup, at 7.30 p.m.

Season ticket-holders, on submission of their 'Cup ticket number 2' slip from their books, accompanied by a remittance of 10s and a stamped, addressed envelope, if by post, will secure a seat.

#### Fixture change

Seats at 10s are also available to those who are not ticket-holders, while wing stand season ticket-holders can book a seat for 8s.

One fixture change that has been agreed to, is that the Reserves will now visit Q.P.R. on Tuesday, 4th, November instead of Saturday, 18th October which was the original date.

**WANTED!**

**PROGRAMME SELLERS**

**MINIMUM AGE 15**

**APPLY KENILWORTH ROAD OFFICE**

The  
Vauxhall  
Breed's  
got  
style.





Luton's leading newsagents

# HOUGHTONS

CONFECTIONERS · TOBACCONISTS  
GREETINGS CARD SPECIALISTS

- ★ 16 The Parade, Hill Rise
- ★ 3 Ashwell Parade, Sundon Park
- ★ 82 Putteridge Road, Stopsley
- ★ 253 Birdsfoot Lane
- ★ 150 Sundon Park Road
- ★ Jansel House, Stopsley
- ★ 217 Dunstable Road
- ★ 8 Hillborough Crescent, Houghton Regis

**Whenever you are near – pay us a visit**  
**We will be pleased to serve you**

**EVENING POST**

**ENTER**  
**'CROSS THE BALL'**  
**EVERY WEEK**  
**AND WIN**  
**BIG MONEY**  
**PRIZES**



## RICHARDSON and BOTTOMS

LIMITED

*Builders  
and  
Contractors*

**107, BISCOT RD.**

**Luton**

Telephone: 25628

## HOW TO GET THERE

**GILLINGHAM v  
LUTON TOWN**

**30th August**



Leave by M1 Motorway  
as for London.

Junction with M10

Bear L.

End of Motorway

Follow signs 'Barnet A405'

At 2m. on, follow signs

'London A6' and 4m further

Turn L as signed

'Potters Bar'

Potters Bar, A111

Southgate

North Circular Road

Roundabout. Take 2nd exit  
A406.

Gants Hill Station

Join A12 as for Southend

'Moby Dick' PH

10 miles

13 miles

22 miles

27 miles

29 miles

37 miles

40 miles

(Roundabout)

Take 3rd road and follow  
'Dartford Tunnel' signs  
through:

Dagenham, A13

Rainham

Dartford Tunnel

Toll: 2s 6d.

At end, Turn L into A2

Join M2

Intersection No. 4

Turn L into A278

GILLINGHAM

(See plan)

Turn L along A2. At  
1½ miles, turn R A231,  
Keep R, Nelson Street,  
Turn R, Napier Road,  
Stadium on R.

44 miles

46 miles

53 miles

64 miles

72 miles

76 miles

**INTER-LEAGUE MATCH**

**FOOTBALL LEAGUE**

**v**

**FOOTBALL LEAGUE  
OF IRELAND**

Wednesday, 10th September, 1969

AT BARNSELY

All ticket match. Tickets are obtainable in advance from the Secretary, Barnsley FC, Oakwell Ground, Grove Street, Barnsley, Yorks.

Centre stand, £1 5s, wing stand (bench seating), £1, Terrace and paddock 7s 6d, Ground 6s.

Applications for tickets should be accompanied by the remittance and a stamped, addressed envelope for the return of tickets.





Back row Freddie Hill, Les Massie, Dave Verity, Bob Wallace, Tony Flower, Dave Lennard, Alex Smith, Ian Lawther, Dave Shawcross, John Pickering.  
 Front row Jeff Ley, Hugh Ryden, Lammy Robertson, Phil McCarthy, Andy Burgin, Mick Buxton.  
 Photo by courtesy of the 'Halifax Evening Courier and Guardian'

## International bought to boost Halifax *By Tony Pullein*

Manager of Halifax Town, Alan Ball snr, has seen so many Fourth Division promotion winners drop back in double quick time, that he appreciates why any team making this leap, must strengthen its resources to stand any chance of survival. So, he went out in search of an experienced inside-forward to hold his team together.

More than that, he came back with one of the best in the business, Bolton's former England International, Freddie Hill.

Hill joined Bolton from school, made his League debut in 1958 and won the first of his ten Under 23 caps three years later. He played for England twice and also made two appearance for the Football League. When he left Bolton in the summer he had completed over 350 League games for them.

Freddie teams up with another old warrior in Ian Lawther who has made a habit of banging home the goals for five clubs in all four divisions of the League.

Sunderland introduced him to the big time and he was their top scorer in two seasons there. He went away to Blackburn, Scunthorpe and Brentford before linking with Halifax last season and is now approaching his 400th League game.

### More experience

The experience doesn't end there. At inside-right is former England youth and Under 23 cap, David Shawcross who started his professional career with Manchester City and made some 50 First Division appearances over seven years. He completed one season (1965-66) and a bit with Stockport, before signing for Halifax.

Tony Flower, the outside-right, took the professional plunge with Notts County eight years ago and was a regular member of their team until his move to Halifax two years ago.

Phillip McCarthy had high hopes at Oldham but got only a couple of first-team games. Halifax signed him in 1966 and for the past three seasons he has been irreplaceable.

Chris Nicoll made a quick rise to fame after joining Halifax from non-League Witton Albion last year. He went almost straight into the first team and made 39 League appearances.

### Accrington casualty

Goalkeeper Alex Smith was just enjoying

his first taste of League soccer with Accrington Stanley when that club folded up in 1962 when he had played in all their 33 games.

The Football League found him new employment at Bolton, but he got only rare opportunities at Burnden Park. So in January, 1968, Alex slipped quietly away to Halifax where he was ever-present last season.

During the summer, Smith teamed up with another former Bolton pal, wing-half David Lennard. David had often held a first team place for long periods and made over 100 League appearances for the Trotters. But he found himself out of favour last season.

### Constant Member

John Pickering, a constant member of the defence for the past two seasons, is starting his fifth season with the club after a spell with Newcastle United. 'Lammy' Robertson put in his groundwork with Burnley, shifted to Bury in 1968, but joined Halifax before the end of last season.

The full-backs will probably be Andy Burgin, the former Sheffield Wednesday and Rotherham man, and Bob Wallace who was signed three years ago from Huddersfield.

Halifax have yet to gather a point from Kenilworth Road, our League record against them being:

	P	W	D	L	For	Ag	Pts
Home	3	3	0	0	8	1	6
Away	3	1	1	1	2	4	3
	6	4	1	1	10	5	9

Their last visit was on November 25th, 1967:

LUTON (1) 2 HALIFAX (0) 0  
 Buxton, Moore 11,572

**Luton:** Read; Dougan, Jardine; Slough, Branston, Moore; Ryan, Buxton, Allen, Rioch, French.

**Halifax:** White; Hampton, Russell; Smith, Sneddon, McCarthy; Taylor, Massie, Parks (Pickering), Ryden, Flower.





# HATTERS' CLUB IS NOW IN FULL SWING! JOIN US?

To mark the first week of the Hatters' Club's existence, members can participate in all the entertainment we are putting on, for no extra charge.

This concession will end on Friday and, from the following day, we shall be making what we regard as a nominal charge.

On Saturday nights, members will pay 5s for full entertainment, such as dancing, live music or cabaret, and non-members who must be signed in by a member, 10s.

### Dancing most nights

During the week, live music and dancing will be provided for only 2s 6d, non-members 5s. This will not be every evening, but some variations are being considered, such as Bingo, and there will be dancing most nights.

Each day, the bar is open from 12 noon to 3 p.m., and hot snacks will be available, as they will be at night when hot meals will be served, if preferred, during the opening hours of 6 p.m. to 11.30 p.m. Bar

service will cease at 10.30 p.m. on week days.

### Match day opening

On Saturday match days, opening hours will be 12 noon to 2.55 p.m., 4.45 - 5.30 and 6 o'clock to 11.30 p.m.

When there is a match at night, the bar will be open from 6 o'clock until 7.25 p.m. and re-open at the end of the game.

There is a special request for as many members as possible to use the Oak Road entrance to the club on match days. Those with cars will find this more convenient because they can park at that end of the ground and gain easy access to the Club.

### Adding luxury

Our aim in providing these facilities has been to add luxury to a high standard of football and this is the motto of the Hatters' Club.

Why not ask for a membership form now?



## Book your seats now for the Plymouth trip!

By Harry Haslam, Entertainments Manager

Our first big venture in providing travel facilities for a long journey comes on Saturday, 27th September, when we have chartered from British Rail a special train to go to Plymouth on the occasion of our team's visit to Home Park.

Seating capacity of the train is 428, and we are able to offer the return trip at the remarkably cheap rate of £1 5s.

### Service available

Full restaurant car and buffet service will be provided on the outward journey and buffet service only on the return.

The train will leave Luton at 8.35 a.m. picking up at Harpenden and St Albans, and will arrive back in Luton at 11.20 p.m., with stops again, at St Albans and Harpenden.

I hope that we shall be given full support on what we hope will be the first of many similar trips.

We feel confident that supporters travelling in this manner, will do nothing to give the club or themselves a bad name. Full details of the trip are on page 15.

### Hatters' Club open

Membership of the new Hatters' Club, which had a successful opening last Saturday, is open to all at £2, or £3, for man and wife and forms can be obtained

either from the offices at Kenilworth Road or the new Pools offices, 231 Dunstable Road.

Steward of the club is Mr Ken Whitfield, who, together with his staff will do everything to make you welcome.

### Available for HIRE

The luxurious hall is also available for hire for various functions such as dinners and dances, and this Club will soon become an important social centre and fulfil a long-felt need.

When private functions are being held, members will have the use of an equally well appointed lounge on the ground floor.

Do not forget to buy our new official calendar which runs from August, 1969, to next July and includes two photographs of officials or players on each page.

At the reasonable price of 5s, it can be obtained either from the Pools offices or the Supporters' Club shops on the ground.

### Bonanza girls wanted

We need at least 10 more Bonanza Girls to sell the Bonanza tickets, priced 6d each, at home matches. They will be dressed attractively in the club's colours.

Don't be shy, girls! Contact me at the Pools office, phone Luton 30748 - and help the club in a worthwhile job.

### Bonanza winners

Last Tuesday's Bonanza winners were: 6462 Mr R. Batson, 29 Bushmead Road, Whitchurch, Bucks. £10.

7436 Mr F. M. R. Ball, St Martins, The Avenue, Dunstable. 'Goali' transistor radio.

6470 Mr A. J. Hopkins, 62 Ridgway Avenue, Dunstable. 'Goali' transistor radio.

### LUTON TOWN FC POOL

#### Last Week's Lucky Numbers

**Monday:** £20-10048; £15-54593; £5-18515; £5-30671; £2-00154; £2-10252; £1-17543.

**Tuesday:** £20-27169; £15-21388; £5-56540; £5-04411; £2-53123; £2-26911; £1-42868.

**Wednesday:** £20-06312; £15-33769; £5-15753; £5-48720; £2-02296; £2-09361; £1-15146.

**Thursday:** £20-39311; £15-08507; £5-27891; £5-30983; £2-45158; £2-17822; £1-31105.

**Friday:** £20-46635; £5-23602; £5-30336; £5-09244; £2-37186; £2-41299; £1-06564.

**Saturday:** £20-02835; £15-18974; £5-15662; £5-21026; £2-18132; £2-09731; £1-23285.



## Coming Matches

FL CUP 2nd ROUND  
TUESDAY, 2nd SEPTEMBER

LUTON TOWN

v

MILLWALL

KICK-OFF 7.30 p.m.

*Prices of admission:*

Centre Stand 10s, Wing Stand 8s,  
Enclosure, Bobbers' Stand and Oak  
Road Terrace 6s, (Children 3s), Kenil-  
worth Road Terrace 5s, (Children 2s 6d).

**ALL PAY**

FOOTBALL COMBINATION

SATURDAY, 30th AUGUST

LUTON TOWN

v

TOTTENHAM HOTSPUR

KICK-OFF 3 p.m.

*Prices of admission*

Enclosure 2s 6d (adults) 1s 6d Children.  
Grandstand 3s.



**WHITBREAD  
TANKARD**  
cool,  
clear, refreshing

Available in all Bars

## NEWS FROM THE SUPPORTERS' CLUB

By FRANK SHEPHARD

Outside many grounds, or advertised in soccer magazines, one sees 'official' club badges for sale which have no connection with the clubs they are supposed to represent.

Indeed, in most cases, there is absolutely no indication that they are, in fact, football badges.

Now, on most grounds, there is a sales shop, so supporters have no need to buy their soccer needs from outside sources. Remember, when you purchase from us, you are helping the football club and also keeping the money in the game.

### First come, first served

We shall endeavour to obtain programmes of all the Town's away matches, but it will be a case of 'first come, first served'.

Pennants are now reduced to 2s each and the new Goalie radios at £3 15s each will make ideal presents for the birthdays of football fanatics.

### Something special

This year, we are not producing our usual handbook, but the football club are taking over where we left off, with a handbook which will, I understand, be something special, and will be on sale soon.

Again, we are hoping that this will be 'our season', and we are also aiming to double our membership. Why not join the Supporters' Club today? Information can be obtained from both shops on the ground.

Evening matches are not convenient to the travelling supporter but, no doubt, a few Halifax followers will have made the journey. We welcome them and invite them to join us later in the Club.

# SPECIAL CHARTERED TRAIN TO PLYMOUTH

## SATURDAY, SEPTEMBER 27

### *Plymouth Argyle v Luton Town*

Train leaves LUTON .. 8.35 a.m.

HARPENDEN .. 8.43

ST. ALBANS .. 8.50

Arriving PLYMOUTH .. 1.45 p.m.

Return Journey Leave PLYMOUTH .. 5.50 p.m.

Arriving ST. ALBANS .. 10.58

HARPENDEN .. 11.07

LUTON .. 11.20

## RETURN FARE ONLY 25/-

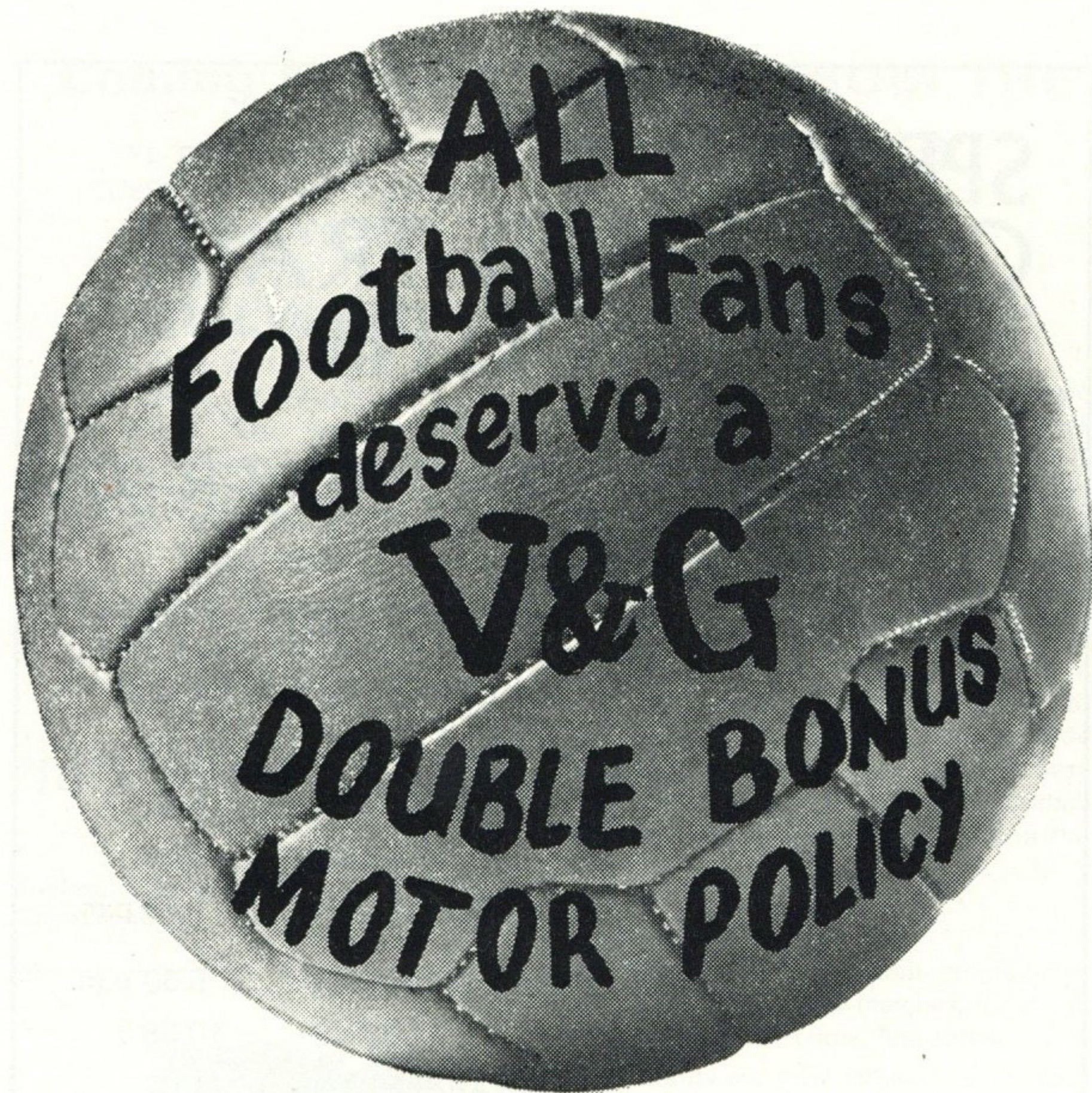
Facilities on the train include restaurant car and buffet service on the outward journey, and buffet service only on the return.

For the homeward trip the train will be joined by Luton Town FC officials and players.

**Bookings can be made at the Football Club Offices,  
Kenilworth Road, Luton – or at the new Pools Office, 231  
Dunstable Road, Luton.**

*PLEASE BOOK EARLY TO AVOID DISAPPOINTMENT!*





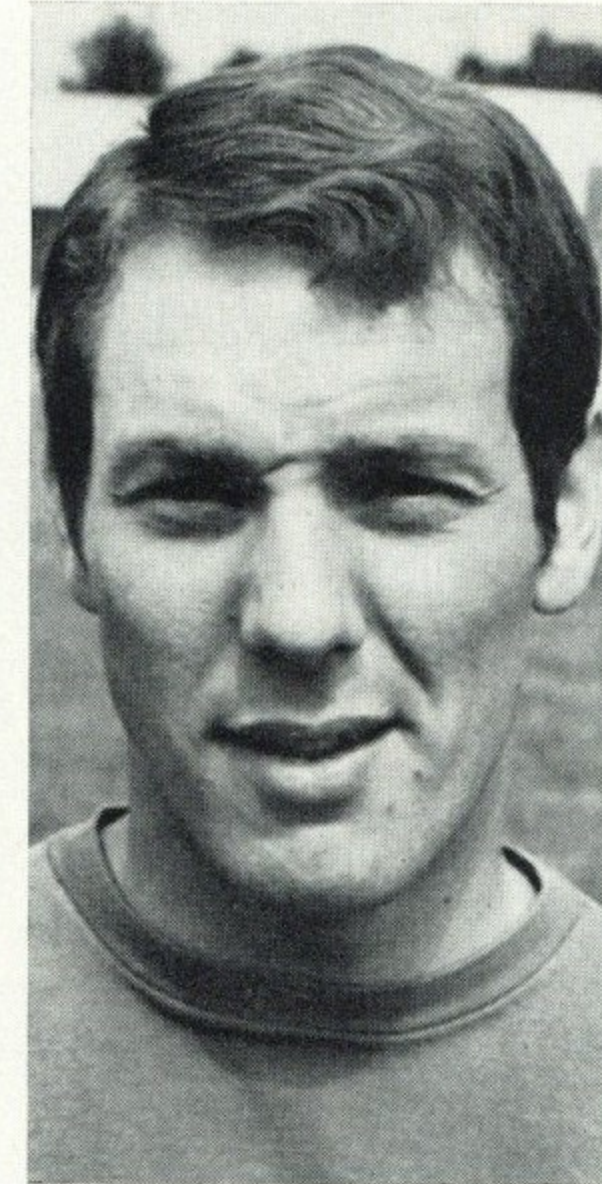
**THE V&G  
DOUBLE BONUS  
MOTOR INSURANCE POLICY  
GIVES FAIRER TERMS  
TO EVERY DRIVER**

For further information contact your local officially appointed V & G Insurance Broker, or write or phone the address below.

**V&G THE VEHICLE & GENERAL  
GROUP OF  
INSURANCE COMPANIES**

Group Headquarters,  
Administration & Operations;  
Bushey House,  
High Street, Bushey,  
Hertfordshire.  
Tel: 01-950 4311.

THE VEHICLE & GENERAL INSURANCE CO. LTD.  
LIFE, CASUALTY & GENERAL INSURANCE CO. LTD.  
AUTOMOBILE & GENERAL INSURANCE CO. LTD.  
THE GENERAL & COMMERCIAL MOTOR INSURANCE CO. LTD.  
METROPOLITAN GENERAL INSURANCE CO. LTD.  
WORLD AUXILIARY INSURANCE CORPORATION LTD.  
PIONEER LIFE ASSURANCE CO. LTD.



**PERSONALITY PROFILE**

**3 SANDY DAVIE**

Can be considered a little unlucky not to be starting the season as first choice goalkeeper because he made 27 consecutive appearances last term before losing his place for the last five matches through injury.

To choose between him and Tony Read for the opening matches was a difficult decision, but Sandy took it in the right spirit.

"I shall just have to try to fight my way back," he says. Which is indicative of the competitive spirit there is within the club.

When he was signed from Dundee United last October, £8,000, still a sizeable fee for a goalkeeper, changed hands, and he quickly impressed as a highly competent performer.

In fact, the Town are fortunate to have two such good goalkeepers at their disposal. Is a Scottish Under 23 International.

**RESULTS SO FAR**

**DIVISION III**

**Luton Town 3 Orient 2**

Read; Ryan, Bannister; Keen, Branston, Slough;  
Collins, Macdonald, Sheffield, Allen, French.  
Substitute: Lewis  
Scorers: Collins, French, Macdonald.

**FOOTBALL COMBINATION**

**Norwich City 0 Luton Town 0**

Davie; Dougan, Jardine; Hooper Guild, Moore;  
R. Lee, Hipwell, Phillips, Stevenson, Harrison.  
Substitute: Starling

**The man in the middle**

**REX SPITTLE**

"Referees must train harder than ever to keep up with the increased pace of the game", says **Rex Spittle** who considers the game has quickened considerably since he was appointed to the League Referees' list in 1962.

Rex Spittle experienced the game from a player's angle as a goalkeeper in the RAF, but he took up refereeing in 1948. He progressed through the Eastern Counties, Midland, Central and Football Combination Leagues to the League Linesmen's list in 1957.

He was a linesman in a Benfica-Dukla European Cup tie and officiated at the Liverpool v Leicester FA Cup semi-final in 1963 and his ambition is to referee the FA Cup final.

Mr Spittle runs his holiday business, letting bungalows and caravans, from his home in Great Yarmouth, but he doesn't look upon his refereeing activities as any holiday, for he takes them very seriously.

His other hobbies include motoring, swimming and ciné photography.

One of his pet hates - "People who stupidly encroach on the pitch, even if they only have the intention of congratulating their players. It only holds up play and causes irritation to players and officials," he says.





*Malcolm Macdonald scores the Town's first goal in the League Cup-tie replay with Peterborough last Tuesday.*

*Brian Lewis follows up to score against Peterborough after Drewery had pushed out his penalty kick. This made the score 3-1.*



## *We're top of the league!*

Team effort.

That's what makes Skefko the leading manufacturer of rolling bearings in the country. We're working together to make even better bearings. Faster. Cheaper. And always on time.

What's in it for us? A good secure job for a start. And good benefits and promotion prospects too. Take it from us - Skefko's a great company to team up with.



# SKF

THE SKEFKO BALL BEARING CO., LTD. LUTON, BEDFORDSHIRE



# THE LINE-UP TONIGHT

13,759

## LUTON TOWN -1

Colours: Shirts White  
Shorts Black

Coach: JIMMY ANDREWS

1 <b>Tony Read</b>		
2 <b>John Ryan</b>		3 <b>Jack Bannister</b>
4 <b>Mike Keen</b>	5 <b>Terry Branston</b> <i>Captain</i>	6 <b>Alan Slough</b>
7 <b>John Collins</b>	9 <b>Laurie Sheffield</b>	11 <b>Graham French</b>
*8 <b>Malcolm Macdonald</b>		10 <b>Keith Allen</b>

Sub: **Brian Lewis**

Referee  
R. V. SPITTLE  
*(Great Yarmouth)*



Linesmen  
D. W. JACKSON *(Watford)*  
Red flag  
A. H. COOPER *(Norwich)*  
Yellow Flag

Sub: **John Pickering**

	10 <b>Freddie Hill</b>	8 <b>Dave Shawcross</b>
11 <b>Phil McCarthy</b>	9 <b>Ian Lawther</b>	7 <b>Hugh Ryden</b>
6 <b>Lammy Robertson</b>	5 <b>Chris Nicholl</b>	4 <b>Dave Lennard</b>
3 <b>Andy Burgin</b>		2 <b>Bob Wallace</b>
	1 <b>Alex Smith</b>	

Colours: Shirts Royal Blue  
Shorts White

Manager: ALAN BALL snr

## HALIFAX TOWN -1

Result: LUTON TOWN -1

HALIFAX TOWN -1