

# MILLWALL FOOTBALL CLUB



official  
programme  
one shilling

FOOTBALL LEAGUE CUP 2nd ROUND REPLAY  
MONDAY SEPTEMBER 8th 1969 KICK OFF 7-30 p.m.

---

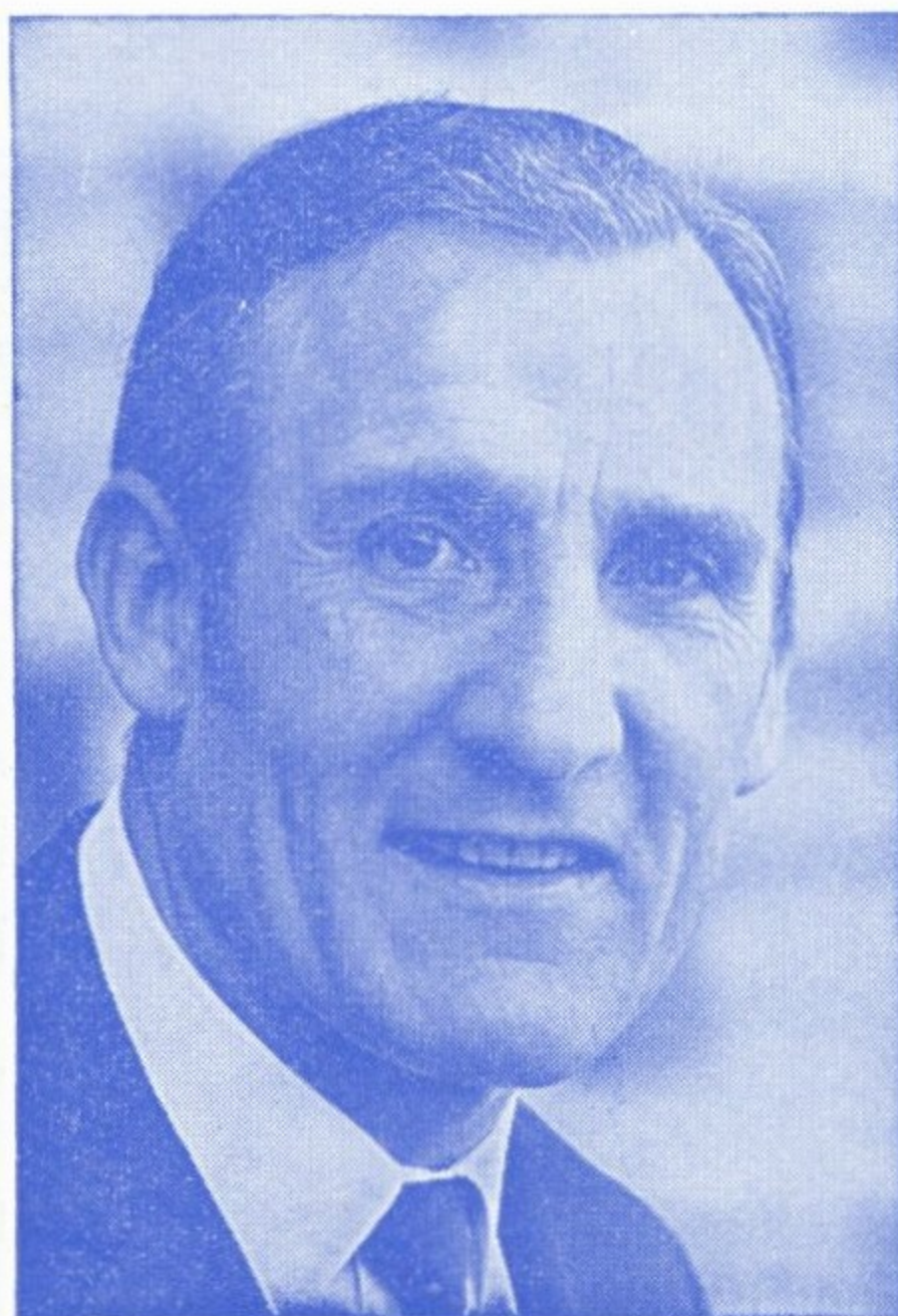
## LUTON TOWN

# MILLWALL FOOTBALL & ATHLETIC CLUB

LIMITED

FOUNDED 1885

Vice-President: R. J. MELLISH, Esq., M.P.  
Directors: F. C. PURSER, Esq., Chairman.  
N. WEEDON, Esq., Vice-Chairman.  
W. J. NELAN, Esq.  
J. B. RICKARD, Esq.  
Hon. Medical Officer: Dr. R. F. BOOMLA  
General Manager: B. R. V. FENTON.  
Secretary: D. G. BORLAND.  
Trainer/Coach: A. NELSON.  
Trainer/  
Physiotherapist: J. BLACKMAN.  
Regd. Office: The Den, New Cross, S.E.14 Telephone: 01-639 3143/4



**B. R. V. FENTON—Manager**

## MANAGER'S COMMENTS

Last Tuesday evening at Luton the crowd appreciation produced a great atmosphere which had us all on our toes until

the final whistle, and I am hoping for a replica of this tonight.

The result 2-2 was I feel on the run of play a fair reflection of the game in which both sides scored with well taken goals. The Football League Cup has really caught on now and is supported by every Club in the League. Entering for the Football League Cup is now a privilege, where a few years ago some Clubs were very luke warm regarding their support for it. However, its success now as a senior competition is a feather in the cap for the Football League and Alan Hardaker, the League Secretary, in particular.

There are never two seasons alike and at the moment we are finding it hard going, but there are distinct signs of improvement in our general play, although the results have not substantiated this, especially our games against Queens Park Rangers and Leicester City recently when we should in both cases shared the points at least.

The Reserves and Juniors have started where they left off last season and I feel confident that eventually from this source we will gradually be drafting one or two into the Senior ranks. This is always a system which requires patience, but in the end pays off.

Our next home game is against Carlisle United next Saturday 13th September, kick off 3 p.m., so until then, Cheerio for now.

BENNY FENTON

## R.T.S. STEEL

409 SILWOOD STREET,  
BERMONDSEY, S.E.1

*Builders Engineers*

*Metal Fabrications*

*General Iron Work*

*Gas and Arc Welding*

phone: 237 4914 639 3402

OPEN EVERY DAY . . .

12 noon to 3 p.m. & 5.30 p.m. to 12.30 a.m.

## ELEPHANT AND CASTLE STEAK HOUSE

97 NEWINGTON BUTTS,  
LONDON S.E.1

Fully Licensed Reservations Phone ROD 2951  
Car Park at rear of Restaurant

14,125

### MILLWALL(0)

SHIRTS: WHITE  
SHORTS: WHITE

KING	1
BROWN	2
NICHOLS	3
JACKS	4
KITCHENER	5
BURNETT	6
POSSEE	7
BOLLAND	8
WELLER	9
DEAR	10
NEIL	11
To be announced JONES	12
REFEREE	
LINESMEN	

### LUTON TOWN(1)

SHIRTS:  
SHORTS:

READ-DAVIE
DOUGAN
BANNISTER
KEEN
BRANSTON
SLOUGH
COLLINS
MacDONALD
SHEFFIELD
* ALLEN
FRENCH
LEWIS MOORE
Mr. G. W. HILL (Leicester)
Mr. R. N. MORPHEW (Ipswich) RED FLAG
Mr. M. F. STIMPSON (Epsom) YELLOW FLAG

## PLAYERS GALLERY DEREK POSSE



Central Press Photos Ltd.

*Derek Posse*

DEREK was transferred to us from Spurs in August 1967 and in his first season had a 100% appearances and scored 12 League and Cup goals. Last season Derek again appeared in all League matches and his tally of goals in Cup and League was 16. Born at Southwark, therefore, in our Parish as it were, Derek began his career with Spurs in 1963. Age 23.

## CLUB VIEW

Our reminder last Saturday week in the programme for Supporters to let us have their own stories of how they came to support Millwall and their recollections over the years has resulted in several folk writing in, and we publish the first one in this evening's programme. Others will follow in future editions of the programmes. So don't forget to let us have your story.

Those of us who were at last Tuesday's match at Luton must have been impressed by the fervour of the Luton Town Supporters. They helped to produce the sort of atmosphere which is typical of a Cup Tie. The small band of Millwall Supporters contributed their share and this evening we would like to hear the Lion Roar really loud and strong, because it makes a big moral booster to our lads on the pitch.

In his comments, our General Manager, Mr. Fenton, has remarked on the success of the Football League Cup which in the early days of its inception came in for a lot of "stick". Full marks to the Football League for sticking to their guns in spite of the critics. The League Cup is now well and truly established and the rapid increase in attendance at all ties over the years is a vindication of the inspiration and faith of the League and Alan Hardaker in particular.

We would like to apologise to our Supporters for not having the Licensed Bars open at our last League game with Leicester City. This was due to an oversight on the part of the Licensee making a late application. However, they are open this evening. The Bars are situated at the back of the North Terrace and under the West Terrace enclosure at the Greyhound Track end of the ground.

## HOSPITAL BROADCASTS

A tremendous amount of Social Welfare work is carried out by the Toc H, whose Lee branch are responsible for the broadcasts to local Hospitals from this ground whenever our First Team are at Home. This activity is a terrific boon to those of our Supporters who unfortunately find themselves patients in hospital on Saturday afternoons instead of cheering on their favourite Club from the terraces or the Stand. This good work has since last season been supplemented by a similar sort of commentary relayed to the Lewisham Borough Welfare service for the Elderly situated at St. James, New Cross Road, (near Deptford Old Town Hall). There the Blind and physically handicapped can sit in comfort and hear a commentary on the game taking place just down the road at The Den.

## COLTS NEWS

At Beckenham on Saturday 30th August our Senior Youth side gave a sparkling display of football throughout 90 minutes of play to beat West Ham United by 6 goals to 1. In the first half we completely dominated play and Doug Alder on the left wing ran riot scoring a couple before the interval; his second goal being a particularly good one for he had little room in which to shoot from an acute angle. With a goal from David Coxhill and an own goal we had a 4 goal lead at half time. We had played very well in this half and the score was a true reflection of the game.

Our lads started the second half in the same fashion as the first with our two wingers making good progress down the wings and Bill Parker, Jim Godfrey and Malcolm Davies providing the front line with accurate passes. Pat Lally at centre half also had a great game and besides stopping all West Ham's attacking efforts found time to break from defence and assist in helping the forwards to attack.

We added two further goals by Doug Alder and George Duck finishing off good work by Steven Brown. Our only mistake in defence led to West Ham scoring a consolation goal, and Alan Ballard had no chance in saving a hard shot from close range.

At Cheshunt on the same day our Junior side were very unlucky not to have won both points against the Tottenham youngsters. We were leading by 2 goals to 1 with only minutes to go when a defensive error let in a Spurs forward to score, and equalise. We hit the woodwork on numerous occasions and our approach work was superior to that of the Spurs. At the back John Flaherty, Bob Blake and Keith Moriarty played very well and up front Trevor Pearce and Harry Huckstepp were a constant menace to the Spurs rear-guard. Micky Hallahan starred in mid field. Our scorers were Robert Furzer and Trevor Pearce.

## ST. JOHN'S AMBULANCE

Whilst we are on the subject of Welfare, we must not forget that other wonderful body of people, The St. John's Ambulance Brigade, who freely give their time and service to ensure that should any Supporter need first aid at our matches then there is someone ready and competent on hand to attend to them. Later this season we shall ask you to show your appreciation in tangible form, when they will be taking a collection at one of our matches. In the meantime I am sure you will join us in saying THANK YOU to the Officers, Nurses and Cadets of the St. John's Ambulance Brigade.

## FORECOURT SEATS

The orange colour seats in front of the Stand are an excellent vantage point and we are surprised that not more people make use of them. YOU CAN PURCHASE A TICKET FOR THESE SEATS IN ADVANCE PRICE TEN SHILLINGS. YOU CAN EVEN GET A SEASON TICKET FOR £9.10.0. FOR THESE SEATS. Failing either of these you can always TRANSFER to these SEATS from the Terraces by paying five shillings extra at the turnstiles situated at the top corner of the terraces as they join the main Stand.

## FORTHCOMING INTERNATIONALS

The following International Matches will be played at Wembley. Wednesday 10th December, kick off 7-45 p.m., England v. Portugal. Tickets for this match will be as follows:

Seats: 50/-, 40/-, 30/- and 20/-  
Standing: 10/-

We have to apply for these not later than 29th October, so if any of our Supporters would like us to get tickets for them will they please place their order not later than 22nd October together with remittance to cover their requirements.

On Wednesday 14th January 1970 England play Holland at Wembley, kick off 7-45 p.m. Tickets for this match will be as follows:

Seats: 50/-, 40/-, 30/- and 20/-  
Standing 10/-

Our application has to be in by 3rd December, so any orders from our Supporters should reach us not later than 27th November again accompanied by the appropriate remittance.

## FUTURE FIXTURES

Next Saturday 13th September we are home to Carlisle United, kick off 3 p.m. Stand Tickets and tickets for the Forecourt are on sale at the Office before and after this evening's match, price 11/- and 10/- respectively.

On Wednesday 17th September our London Mid-Week side are home to Orient, kick off 7-30 p.m.

Sandwiched between these two Home games you can see our Senior Colts in action at Charlton in the Southern Junior Floodlit Cup, kick off 7-45 at The Valley on Monday 15th September.

On 20th September we travel to Blackburn and for the benefit of those who may want to make the journey by road we publish elsewhere in this issue Route and Map.

## Our Visitors—LUTON TOWN

We have pleasure in welcoming this evening the Directors, Officials Players and Supporters from Luton Town.

The last occasion our two Clubs met at The Den in a Senior game was during the Christmas Holiday Fixtures in Season 1963/64 when we were both members of Division Three. On that occasion Millwall did the double winning the game at The Den on Boxing day by 3 goals to nil and the return fixture at Kenilworth Road by 3 goals to 1. Much water has flown under the bridge since then. The Lions dropped to the Fourth Division at the end of that Season and the following season jumped back to the Third, but Luton dropped down in our Promotion year and had to wait three more Seasons before they regained the Third. Luton have, of course, been in the First Division. They won promotion to the top flight in 1954/55 and stayed until the 1959/60 season. The previous season they had appeared at Wembley in the Cup Final only to be beaten by Notts Forest by 2 goals to one.

We first find mention of Luton Town in Football League circles way back in the 1896/97 season when they were members of the Second Division. They are known as the "Hatters," although we understand that the hat trade does not flourish so much in Luton as of yore.

Most of us these days associate Luton with Cars, Vauxhall Cars in fact, and most of the male and no doubt a good deal of the female labour force of this thriving town earn their keep at the vast Vauxhall plant. So far as we know Luton Town hold a record for a player having scored the most number of goals in any one match. On April 13th 1936, Joe Payne making his debut at centre forward contributed 10 goals to their crushing victory over Bristol Rovers in a Division 3 South game by 12 goals to nil.

Luton are at present on the crest of a wave and much of their success is due to an enterprising Chairman, Mr. A. T. Hunt, and a Manager, Alec Stock whose name is synonymous with success, but we feel sure both these gentlemen will modestly assert that the success of Luton is due to team work, which, of course, is what the game is all about.

## THE FOOTBALL LEAGUE CUP

We have already elsewhere in this issue extolled the merit of the Football League Cup Competition without elaborating, so we make no excuses for going just that stage further and give you a few facts and figures.

For the first time in the history of the competition all 22 First Division clubs went into the hat when the draw for the Second Round of the Football League Cup Competition was made at League Headquarters on Thursday, August 14.

Manchesters United's decision to enter the competition — they were the only club not to take part last season — meant the first ever 100 per cent turn out by League clubs as the competition entered its tenth year.

Twenty eight winners from Round One, 22 First Division clubs and 14 Second Division clubs exempted from the First Round, went into the draw for the Second Round which took place on September 3.

Manchester United cannot draw a lot of confidence from their two previous experiences in the competition . . . they have not progressed past the Second Round.

In 1960/61 United went out to Bradford City after beating Exeter City in a First Round replay. Six years later, the club crashed 5-1 in a Second Round tie against Blackpool.

Another famous Cup fighting side have not exactly set the League Cup Competition on fire. Newcastle United, Fairs Cup holders have won only three games in nine years of League Cup football.

These records contrast sharply with Arsenal's history in The League Cup. In their three previous appearances, the Gunners have twice reached the final and on both occasions finished on the losing side — against Leeds United two seasons ago and Swindon Town last season.

The longest tie in The League Cup was played last season when Tranmere Rovers eventually defeated Chester in a Round One game after four matches.

Record for the highest score in one match is shared by Northampton Town and Leicester City. Both clubs have hit eight goals, against Brighton and Coventry City respectively.

Last season's competition attracted two million spectators for the first time . . . the final figure was 2,064,647 — the average per tie working out at 17,497 compared with 15,194 the previous season.

With all 92 clubs in for the first time, The League are hopeful that this record will be broken after the final at Wembley Stadium on March 7.

## OUR LOYAL FANS



*THE MILLWALL STORY as seen by LEN PARRY 50 years a Supporter.*

Born at Bramcote Road — now Grove, S.E.16. and educated at Credon Road L.C.C. School. I suppose it is only natural that I am a Millwall supporter. Yes, I can really claim to be a regular supporter of the Lions for more than fifty years. My first visit to the Den was with my Father during the First World War (1914/18). Of course I was just a kid about eight or nine years of age at the time but I have followed the fortunes of Millwall ever since.

I believe some of the well known players at that time were Tiny Joyce, the Giant goalkeeper — Billy Woodley, Joe Wilson, Bert Moody, Sammy Lamb and Banger Voisey.

I should think that the years following the 1914/18 war were hard times for Millwall but the Manager Bob Hunter and Chairman Tom Thorne brought some good players to the Den many of whom I well remember, but too numerous to mention in this letter.

Us school kids around Bermondsey were Football crazy and I well remember in the early twenties Millwall were playing BURY in a Cup replay having drawn 3-3 away. The whole class with few exceptions played truant from school that afternoon. Mind you we were for it the next morning but as Millwall won 2-0 it was

worth it Manager Hunter was finally rewarded when a great Millwall team won the Third Division Championship and were promoted in 1928. During the previous season we had a wonderful run in the F.A. Cup and I shall never forget the memorable match against the star studded Middlesbrough who included International forwards Camsell, Pease and Page.

Joe Lansdale (a great favourite at The Den saved two penalties) and Millwall won 3-2. What a game! As they say nowadays, "a real cliffhanger".

Well some of the players were then getting on in years — a few changes were made but Millwall were soon back in the Third Division. Manager Bob Hunter I believe died and was superseded quite unsuccessfully by the old Newcastle International full back Bill McCracken known as the 'Off-side King'. Gates dwindled and McCracken's stay was short.

Now came Charles Hewitt the Secretary-Manager — Things began to buzz — Hewitt was a showman and the crowd loved it. Supporters were streaming back and a team was being built to win promotion once more to Division II. Before this was achieved however Millwall again showed their worth as Cup fighters with another fine run which took them into the Semi-Final. After a string of home wins over Fulham, Chelsea, Derby County and Manchester City they were beaten 2-1 by Sunderland at Huddersfield. I well remember travelling by train to Huddersfield — Football Excursion but NON CORRIDOR. Can you imagine? Yes we were really breaking our necks!

The following season Millwall duly gained promotion but this splendid team did not get the chance which they richly deserved, to show how good they were in Division II.

Came World War II — Many fine players did not come back or those that did were that much older and Millwall were soon to be relegated once more. Hard times again — more managers, Jack Cock, Jimmy Seed, Reg Smith, Ron Gray.

But then came Billy Grey and once more Millwall were fighting back. Fifty nine consecutive home games without defeat — a record — Division IV — Division III — Division II.

It is now 1969 and fifty years have passed supporting Millwall. Manager in charge is Benny Fenton a Londoner, ex player West Ham, Millwall and Charlton. Rain or Shine — Good Times and Bad ones, I have seen it ALL at THE DEN. But this is the 64,000 Dollar question? Will I EVER see MILLWALL in the FIRST DIVISION?



Mercury Photos

**Action shots taken from our games with Middlesbrough and Leicester City**



Mercury Photos

### FEATURING OUR SUPPORTERS

The above photograph was taken at one of our home matches last season. If you find that you are the person circled above, call at the office and if you can satisfy us that it is really you, then a complimentary ground ticket will be yours for our next home League match.

### NAME THE PLAYER

*Answer on Back Page*

The letters below when re-arranged will spell out the name of a well known soccer player.

The following clues will help you establish his identity.

1. Appeared in a League match when only 16½.
2. His club parted with the current England choice for this position in order to bring this bright young prospect into their League team.

**T H E O P I N T S E R L**

**Gheer Millwall Again, at The Den  
v.  
CARLISLE UNITED  
on Saturday 13th September  
at 3.00 p.m.**

### FLASH BACK

#### FLASH BACK — ONE YEAR AGO

On 7th September 1968 we were at Blackburn where we won by 4 goals to 2. Our scorers were Keith Weller, Ken Jones and Harry Cripps (2). The attendance was 9,923.

#### FLASH BACK — FIVE YEARS AGO

On 7th September 1964 we were home to Chester in a Division Four fixture, when we won by the only goal of the match provided generously for us by our opponents. The attendance was 9,198.

#### FLASH BACK — TEN YEARS AGO

On 7th September 1959 we drew 1-1 with Bradford (Park Avenue) at Bradford. Our scorer was Alf Ackerman. The attendance 7,204.

#### FLASH BACK — FIFTEEN YEARS AGO

On 9th September 1954 we won by the only goal of the match at Northampton in a Division Three South match. Our goal was scored by Ramscar on a rainy day with 9,521 people in attendance.

# FOOTBALL LEAGUE FIXTURES SEASON 1969/1970

		Venue	Result 69/70 F. A.	Result 68/69 F. A.	Atten- dance 69/70	Atten- dance 68/69
Aug. 9	Bolton Wanderers	A	1 4	4 0	10,075	12,715
12	Middlesbrough	A	1 3	1 1	16,221	17,153
16	Charlton Athletic	H	1 1	3 2	20,451	23,011
18	Middlesbrough	H	1 1	2 0	12,641	22,019
23	Queens Park Rangers	A	2 3	—	19,735	—
30	Leicester City	H	0 1	—	14,011	—
Sep. 3	Luton Town (L.C. 2nd Rd.)	A	2 2	—	17,372	—
6	Aston Villa	A	—	1 1	—	19,069
8	Luton Town (L.C. replay 2nd rd.)	H	—	—	—	—
13	Carlisle United	H	—	1 1	—	12,768
20	Blackburn Rovers	A	—	4 2	—	9,823
24	League Cup 3rd Round					
27	Bristol City	H	—	2 2	—	13,079
30	Swindon Town	A	—	—	—	—
Oct. 4	Oxford United	A	—	0 1	—	14,248
7	Charlton Athletic	A	—	4 3	—	26,912
11	Blackpool	H	—	1 2	—	13,598
15	League Cup 4th Round					
18	Preston North End	A	—	1 0	—	10,884
25	Sheffield United	H	—	1 0	—	14,090
29	League Cup 5th Round					
Nov. 1	Huddersfield Town	A	—	2 0	—	18,614
8	Watford	H	—	—	—	—
15	Norwich City	H	—	3 1	—	14,774
19	League Cup Semi-Final					
22	Birmingham City	A	—	2 1	—	29,770
29	Portsmouth	H	—	0 0	—	13,454
Dec. 3	League Cup Semi-Final					
6	Hull City	A	—	0 2	—	10,786
13	Carlisle United	A	—	0 1	—	7,937
15	Cardiff City	H	—	2 0	—	13,893
20	Aston Villa	H	—	0 1	—	15,168
26	Queens Park Rangers	H	—	—	—	—
27	Leicester City	A	—	—	—	—
Jan. 3	F.A. Cup 3rd Round					
10	Blackburn Rovers	H	—	2 2	—	10,227
17	Bristol City	A	—	0 0	—	14,382
24	F.A. Cup 4th Round					
31	Oxford United	H	—	2 1	—	14,243
Feb. 7	Blackpool	A	—	0 1	—	9,524
14	Bolton Wanderers	H	—	3 1	—	15,655
21	Watford	A	—	—	—	—
28	Huddersfield Town	H	—	5 1	—	13,613
Mar. 7	Birmingham City	H	—	1 3	—	12,652
14	Portsmouth	A	—	0 3	—	21,868
21	Hull City	H	—	2 3	—	13,493
28	Norwich City	A	—	3 0	—	19,048
30	Preston North End	H	—	0 0	—	15,827
31	Sheffield United	A	—	0 1	—	17,545
Apr. 4	Swindon Town	H	—	—	—	—
11	F.A. Cup Final					
15	Cardiff City	A	—	0 2	—	22,405

## LONDON MID-WEEK LEAGUE FIXTURES—Season 1969-1970

Date 1969/70	Opponents	Venue	F.A.	LEAGUE CUP FIXTURES Date 1969/70	Opponents	Venue	F.A.
Aug. 27	Colchester United	H	5 1	Oct. 8	Southend United	H	
Sep. 17	Orient	H		Jan. 7	Brighton	A	
Oct. 1	Watford	A		14	Brighton	H	
15	Brighton	H		21	Orient	H	
22	Brighton	A		Feb. 4	Aldershot	A	
29	Watford	H		Mar. 4	Watford	H	
Nov. 5	Aldershot	A		11	Charlton Athletic	H	
11	Charlton Athletic	A		18	Southend United	A	
19	Charlton Athletic	H		25	Colchester United	H	
Dec. 3	Southend United	H		Apr. 1	Watford	A	
10	Southend United	A		7	Charlton Athletic	A	
31	Colchester United	A		22	Colchester United	A	
Feb. 18	Aldershot	H		29	Orient	A	
25	Orient	A		May 6	Aldershot	H	



Join  
the  
Courage Light Brigade

### SOUTH EASTERN COUNTIES LEAGUE FIXTURES—Division One

Date 1969	Opponents	Venue	K.O.	Results F.A.
Aug. 9	Q.P.R.	A	11a.m.	2 2
16	Tottenham	H*	11a.m.	3 1
23	Orient	A	11a.m.	3 4
30	West Ham	H*	11a.m.	6 1
Sep. 6	Chelsea	A	11a.m.	
13	1st Rd. Div. 1 L.C.			
15	Charlton A. †	A	7-45p.m.	
20	Arsenal	A	11a.m.	
27	Crystal Palace	H*	11a.m.	
Oct. 4	Watford	H*	11a.m.	
11	Charlton Athletic	A	11a.m.	
18	2nd Rd. Div. 1 L.C.			
25	Reading	H*	11a.m.	
Nov. 1	Luton Town	A	11a.m.	
8	Q.P.R.	H*	11a.m.	
15	Fulham	A	11a.m.	
22	Luton Town	H*	11a.m.	
29	Gillingham	A	11a.m.	
Dec. 6	Arsenal	H*	11a.m.	
13	Crystal Palace	A	11a.m.	
20	Fulham	H*	11a.m.	
27	West Ham	A	11a.m.	
1970				
Jan. 3	Ipswich	H*	11a.m.	
19	Watford	A	11a.m.	
17	Colchester	H*	11a.m.	
24	Colchester	A	11a.m.	
31	Ipswich	A	11.30a.m.	
Feb. 7	Charlton Athletic	H*	11a.m.	
14	Reading	A	3p.m.	
21	Tottenham	A	11a.m.	
28	Chelsea	H*	11a.m.	
Mar. 7	Orient	H*	11a.m.	
14				
21	Gillingham	H*	11a.m.	
Apr. 4				

† denotes Southern Junior Floodlit Cup  
\* denotes L.T.G. Beckenham

### SOUTH EASTERN COUNTIES LEAGUE FIXTURES—Division Two

Date 1969	Opponents	Venue	K.O.	Results F.A.
Aug. 6	Fulham†	A	11a.m.	5 2
16	West Ham†	A	11a.m.	2 1
23	West Ham†	H*	11a.m.	0 6
30	Tottenham†	A	11a.m.	2 2
Sep. 6	Orient†	H*	11a.m.	
13	Chelsea	A	11a.m.	
20	Chelsea†	H†	11a.m.	
27	Chelsea†	A	11a.m.	
Oct. 4				
11	Crystal Palace†	A	11a.m.	
18	Tottenham†	H†	11a.m.	
25				
Nov. 1	Crystal Palace†	H†	11a.m.	
8				
15	Charlton Athletic†	H†	11a.m.	
22	Charlton Athletic†	A	11a.m.	
29	Orient†	A	11a.m.	
Dec. 6				
13	Fulham†	H†	11a.m.	
20	Tottenham	A	11a.m.	
27	Fulham	A	11a.m.	
1970				
Jan. 3				
10	Charlton Athletic	H†	11a.m.	
17	Orient	A	11a.m.	
24	Fulham	H†	11a.m.	
31	Crystal Palace	A	11a.m.	
Feb. 7	Charlton Athletic	A	11a.m.	
14	Crystal Palace	H†	11a.m.	
21	Tottenham	H†	11a.m.	
28	West Ham	A	11a.m.	
Mar. 7				
14	Chelsea	H†	11a.m.	
21	Orient	H†	11a.m.	
28	West Ham	H†	11a.m.	

† denotes Junior Cup Fixtures

\* denotes L.T.G. Beckenham  
‡ denotes Metrogas Ground

**TEAMS AND APPEARANCES**

**Football League 1969-70**

League Cup Appearances in ( )

	Appearances	Goals
B. KING	(1) 6	
B. BROWN	(1) 6	
H. CRIPPS	3	
G. JACKS	(1) 6	
B. KITCHENER	(1) 6	
D. BURNETT	(1) 6	
W. NEIL	(1) 5 [Sub 1]	
G. BOLLAND	(1) 6	2
B. DEAR	4 (Sub 1)	
E. DUNPHY	(1) 5 [Sub 1]	
A. DORNEY	(1) 5 [Sub 1]	
D. POSSEE	(1) 4	(1) 1
B. NICHOLS	(1) 3	
K. WELLER	(1) 6	(1) 3

**S.E. Counties League—Div. 1 1969-70**

A. BALLARD *	4	
L. STEWARD	4	
M. HALL	4	
J. GODFREY *	4	1
P. LALLY *	4	
W. PARKER	4	
S. BROWN *	4	3
M. DAVIES	2	
G. DUCK *	4	5
T. SAMPSON *	1	
D. ALLDER *	4	3
J. PHELAN	[Sub 1]	
R. BLAKE	2	
D. COXHILL	3	1
K. MORIARTY	[Sub 1]	
OPPONENTS		1

**S.E. Counties League Cup—Div. 2 1969-70**

B. MEDLIN	1	
L. MUNOZ	2	
R. BLAKE	2	
A. BUSHELL	3	1
H. HUCKSTEPP	3	
J. FLAHERTY *	4	
M. HOBBS *	3	3
R. BUCKLE	2	
P. BAILEY	3 [Sub 1]	2
T. PEARCE	2	1
A. MARTIN	3	1
D. SHARP	[Sub 2]	
T. SAMBRIDGE	3	
J. PHELAN	1	
R. FURZER	3	1
L. ALLEN	1	
T. SAMPSON *	2	
J. CASTLE	1 [Sub 1]	
K. INGHAM	2	
M. DAVIES	1	
K. MORIARTY	1	
M. HALAHAN	1	

\* Denotes Apprentice Professional

**DIVISION TWO**

	P.	W.	D.	L.	F.	A.	PTS.
Sheffield United	7	5	1	1	16	6	11
Cardiff	7	4	2	1	11	6	10
Huddersfield	6	4	1	1	10	4	9
Leicester	6	4	1	1	11	5	9
Q.P.R.	6	4	1	1	13	6	9
Norwich	7	4	1	2	7	6	9
Swindon	6	3	2	1	13	7	8
Blackburn	6	3	2	1	5	3	8
Charlton	7	3	2	2	7	11	8
Middlesbrough	7	3	1	3	7	8	7
Hull	7	3	1	3	6	7	7
Bolton	6	2	2	2	10	7	6
Portsmouth	6	2	2	2	7	8	6
Carlisle	6	2	2	2	8	8	6
Blackpool	6	2	1	3	6	11	5
Oxford	5	2	0	3	5	6	4
Birmingham	6	1	2	3	6	9	4
Preston	6	1	1	4	6	8	3
Millwall	6	0	2	4	6	13	2
Bristol C.	5	1	0	5	2	9	2
Watford	6	0	2	4	1	7	2
Aston Villa	6	0	1	5	1	8	1

**S.E. COUNTIES LEAGUE—DIV. ONE**

	P.	W.	D.	L.	F.	A.	PTS.
Ipswich	4	3	1	0	10	2	7
Charlton A.	4	2	2	0	16	6	6
Tottenham	4	3	0	1	15	6	6
Orient	3	2	1	0	11	6	5
Millwall	4	2	1	1	14	8	5
Q.P.R.	4	1	3	0	10	6	5
Crystal P.	4	2	1	1	4	3	5
West Ham	4	2	1	1	12	10	5
Colchester	4	2	1	1	10	9	5
Chelsea	4	1	2	1	6	6	4
Arsenal	4	1	1	2	10	5	3
Watford	4	0	2	2	6	10	2
Luton T.	4	1	0	3	5	13	2
Gillingham	3	0	1	2	4	12	1
Reading	4	0	1	3	3	14	1
Fulham	4	0	0	4	3	23	0

**S.E. COUNTIES LEAGUE—DIV. TWO CUP**

	P.	W.	D.	L.	F.	A.	PTS.
Crystal P.	3	2	1	0	9	5	5
Chelsea	3	2	1	0	8	5	5
Millwall	4	2	1	1	9	11	5
West Ham	3	1	0	2	8	5	2
Charlton A.	2	1	0	1	4	3	2
Tottenham	2	0	2	0	6	6	2
Orient	3	1	0	2	4	5	2
Fulham	4	0	1	3	6	14	1

**RECORD REQUESTS**

We will be continuing with Record Requests this season, so if you have a request to make for our next home match please complete the form hereunder:

**RECORD REQUEST FORM**

Please play a record for: .....

With the following message .....

From .....

Post to: Record Requests.

Millwall Football Club,  
The Den, Cold Blow Lane,  
New Cross, S.E.14.

ALL RECORDS PLAYED ON THIS GROUND HAVE BEEN KINDLY PROVIDED BY MESSRS. WALLIS of 907, OLD KENT ROAD, S.E.15 (just under the bridge) who will be pleased to attend to your Television Radio and Record requirements.

# Treat Yourself To Timpson's Travel

**FOR DETAILS OF COACH SERVICES, DAY TOURS, OR COACH HIRE**

Apply to:—A. TIMPSON & SONS LTD., CATFORD, S.E.6.

Phone: 01-698 4646

**MATCH FACTS AND FIGURES**

MATCH MILLWALL v. .... Date .....

SCORE MILLWALL..... v. ....After 45 minutes:

MILLWALL..... v. ....RESULTS

GOALSCORERS MILLWALL ..... Time of Goal .....

(Opponents) .....

SUBSTITUTES For MILLWALL .....used after.....mins

in place of .....

For .....used after.....mins

in place of .....

ATTENDANCE .....

SUMMARY OF RESULTS P. W. D. L. F A. PTS. POSITION

## Ancient Order of Foresters Friendly Society

South London District.

offer the BEST BENEFITS for the CHEAPEST CONTRIBUTIONS

Benefits include Grants for—  
OPTICAL DENTAL SURGICAL APPLIANCES  
CONVALESCENT HOME TREATMENT.

Local Office : 381 QUEENS ROAD, NEW CROSS, LONDON, S.E.14



## DEN DEVELOPMENT FUND

When you buy your programme each week you have probably only given this page a casual glance and then dismissed its contents to concentrate on some other part of the reading material. BUT BELIEVE US THIS IS ONE OF THE MOST IMPORTANT PAGES IN THE PROGRAMME AS FAR AS THE CLUB IS CONCERNED. THIS IS THE PAGE WHERE WE APPEAL TO YOU TO HELP US TO DEFRAY THE COST OF THE MANY IMPROVEMENTS BEING CARRIED OUT ON THE GROUND BY BECOMING AN AGENT FOR THE WEEKLY LOTTERY WHICH IS THE BACKBONE OF THE REBUILDING PROGRAMME AT THE DEN YOUR WILLINGNESS TO HELP WILL RELIEVE MUCH OF THE BURDEN ON THE CLUB AND RELEASE MONEY NEEDED TO BUILD THE TEAM. FILL IN THE SLIP ON THIS PAGE AND BECOME AN AGENT. EVEN IF YOU CAN ONLY SELL FIVE TICKETS. THERE ARE OTHER WAYS OF HELPING TOO. SUCH AS BEAT THE CLOCK DETAILS OF WHICH ARE AS FOLLOWS:

### Beat the Clock

GET YOUR TICKET TODAY PRICE ONE SHILLING AND SEE IF YOU CAN BEAT THE CLOCK.

Today, as you enter The Den, you will see several young Ladies neatly dressed in blue uniforms, who will be selling you BEAT THE CLOCK TICKETS. We ask you not to pass them by. Each ticket you buy has a time of so many minutes and seconds printed on same. If your numbers agree with the time of any goal scored during the match you stand to win £50 or a portion of same according to the

number of goals scored. In the event of a goal-less draw, there are four tickets circulating with "NO Goals" printed on them. The ANNOUNCER will keep a check on the time of goal scoring with a stop watch and broadcast the times during the match.

DON'T FORGET — BUY YOUR TICKET AS YOU COME INTO THE GROUND TODAY AND SEE IF YOU CAN BEAT THE CLOCK.

## THE DEN IMPROVEMENT FUND

DO YOU WISH TO BECOME AN AGENT?

A Result Sheet that tells you the winners' names and addresses.

Weekly Prize Money £200

I wish to become an Agent.  
I am over 18.

NAME .....

ADDRESS .....

Please return this form when completed to DEN IMPROVEMENT FUND, THE DEN, COLD BLOW LANE, NEW CROSS, S.E.14.

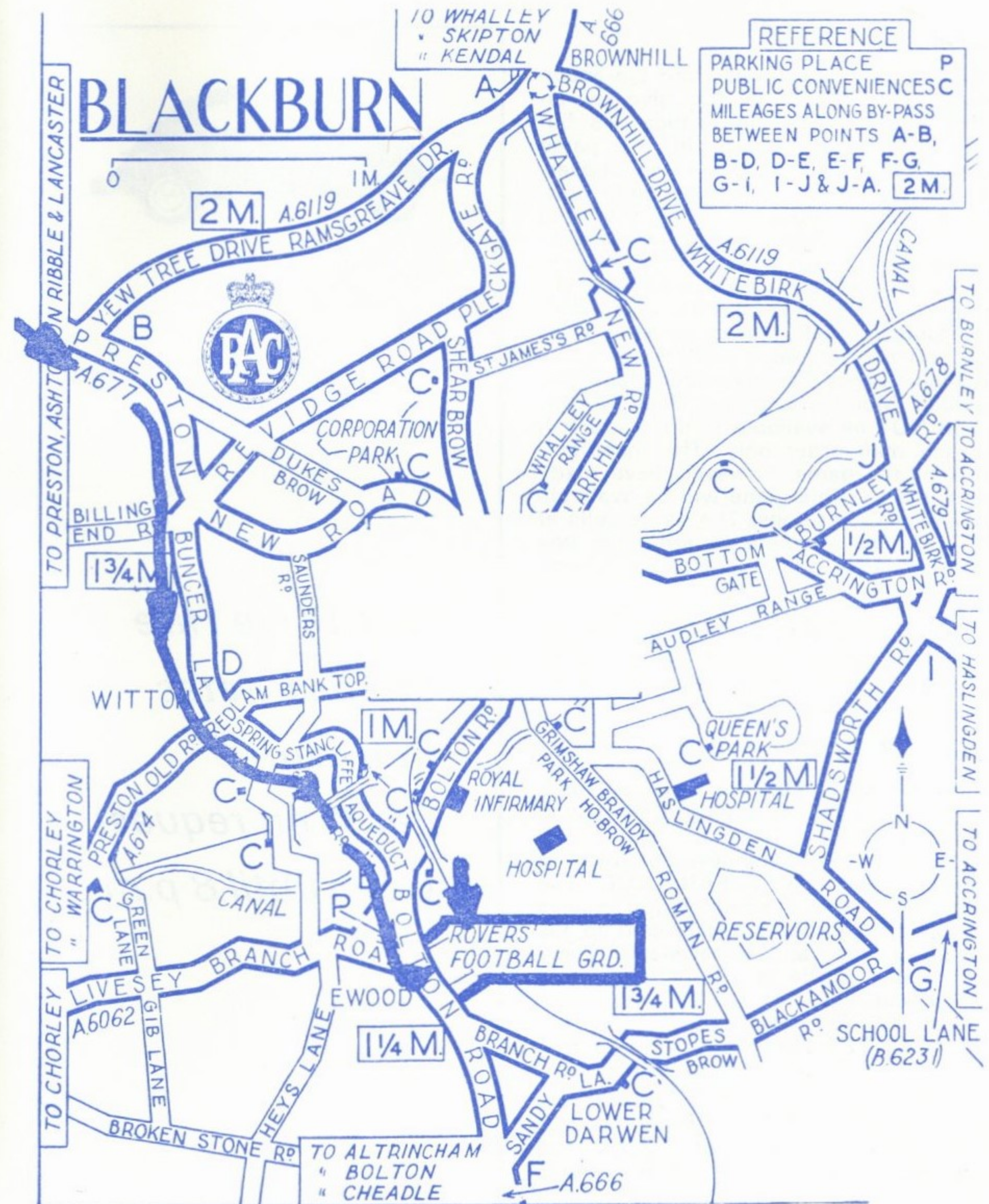
You may if you wish have a Free Terrace Ticket for the next Home game in lieu of commission if you dispose of 25 or more tickets weekly.

## WITH THE RESERVES

Our London Mid-Week League side made a belated start to the season on Wednesday 27th August when we entertained Colchester United. The lads had a comfortable win by five goals to one. It was particularly pleasing to see young Ron Howell back on the field. A double cartilage operation has deprived him of a game since last January. Ron celebrated his return to the game by scoring two of our goals and was none the worse for his long lay off. Our other scorers were Brendan Mullan (2) and Barry Salvage operating from the unusual position for him of right full back.

## COLOURED WALL CHARTS

The Football League have published recently a wall chart depicting all Football League Clubs' Colours with a sub section showing International and Scottish League colours. You can obtain these from the Football League Press Offices, Football League, Lytham St. Annes, Lancs, price 5/- post free. The colours are correct up to time of publication and of course no guarantee can be given against subsequent changes. This colourful wall chart could prove a very attractive addition to the Fan's collection of souvenirs.



### BY CAR TO BLACKBURN

Approx. 227 miles from West London  
Compiled by the Royal Automobile Club  
Leave London from Marble Arch via Edgware Road and proceed north to the junction with the North Circular (A406) at Staples Corner (Welsh Harp) and turn right. Continue ahead to Brent Cross Flyover and follow the signs to the M.1 ..... 8 miles  
Continue north by the M.1 to the intersection with the M.45 ..... 77 miles  
Proceed by the M.45 to the A.45 and follow the signposted route to M.6 at the Gailey Intersection ..... 133 miles  
Follow the M.6 north to Intersection No. 31 ..... 220 miles

Continue by signposted route 'Blackburn' and proceed via A59 then A677 to Blackburn ..... 227 miles  
Enter Blackburn by the Preston New Road (A677) and continue to the crossroads. Turn right into Bouncer Lane and proceed ahead via Spring Lane — Stancliffe Street — Aqueduct Road to Bolton Road and the ground is on your left (see Town Plan).

Parking is controlled by the police, so watch for the signs, including diversions. Your nearest RAC offices are at: RAC, P.O. Box 100, RAC House, Lagsdowne Road, Croydon CR9 2JA; or, RAC Northern Home Counties, 130 St. Albans Road, Watford, Herts.



## "4-2-4"

Don't get the wrong idea from the above heading. We don't intend to give you an article on the formation which has become a familiar feature in the game today. No this is to herald the appearance on the market of a new table football game, available at the end of this month. We understand from the inventors that many people in football who have seen the game have expressed the view that it is probably the most realistic table football game they have seen. You will shortly see it advertised in the Football League Review, Goal Magazine, Football Monthly and the Daily Mirror. It will NOT be available in the shops but through mail order only. The manufacturers of the game, however, have made an exception. This game will be available in League Club Shops. The game sells at 61/-, comes complete in attractive box with marked out pitch, goals, 22 players, rules, etc.

We feel that this game might make an attractive Christmas present, and if any of our Supporters would like to avail themselves of this opportunity, we shall be pleased to take orders.

## FAN CLUB NEWS

Today we bring you the news of three Fan Clubs operating amongst our young Supporters.

Jan and Jill welcome new members to THE GEORGE JACKS FAN CLUB. The subscription is 5/- for which you receive a photo of George, a background to his career to date, and a newsletter every two months. Write to:

JAN and JILL,  
33, BEECH HOUSE,  
AINSTY ESTATE,  
ROTHERHITHE, S.E.16.

Val, Gilly and Glenda of 205, Lewisham Way, Brockley, S.E.4. invite you to join THE DEREK POSSEE FAN CLUB. The membership fee is five shillings, and as with The George Jack's Club you receive a photo, background to career and a periodical news letter.

Last by no means least the organisers of THE KEITH WELLER FAN CLUB, Marina and Yvonne of 62, Norwood Road, Herne Hill, S.E.24. have informed us that they wish to donate a Match Ball at one of our future games and we shall be very pleased to accept their very kind offer.

## F.A. DIARY

The Football Association announce that their Diary is now available, price 6/- and can be obtained by applying direct to The Football Association, 22 Lancaster Gate, London W.2.

## NAME THE PLAYER

Answer: PETER SHILTON



*Self Drive Hire  
the best rates  
in town*

*Tariff on request  
Open until 8 p.m.*



**F. C. PURSER LTD**

**VOLKSWAGEN AGENTS**

**434-450 OLD KENT ROAD  
LONDON, S.E.1**

**Telephone: 01-237 3134/5/6**