



LUTON TOWN

FOOTBALL CLUB

Telephone: Luton 23151



DIVISION THREE

v SHREWSBURY TOWN

Saturday 20th September 1969 Kick-off: 3 p.m.

Official Programme: Price 1/-

FIXTURES 1969-70

DIVISION THREE

Date	Opponents	Attendance	Result
August			
Sat 9	BARROW	12,080 (H)	3-0
Wed 13	FLC1 Peterboro'	10,249 (A)	1-1
Sat 16	Bournemouth	9,735 (A)	1-0
Tues 19	FLC1 PETERBORO'	13,105 (H)	5-2
Sat 23	ORIENT	13,761 (H)	3-2
Tues 26	HALIFAX T.	13,759 (H)	1-1
Sat 30	Gillingham	7,792 (A)	2-0
September			
Tues 2	FLC2 MILLWALL	17,372 (H)	2-2
Sat 6	BRISTOL R.	15,198 (H)	4-0
Mon 8	FLC2 Millwall	14,125 (A)	1-0
Sat 13	Bradford City	10,851 (A)	1-1
Tues 16	Southport	4,003 (A)	3-0
Sat 20	SHREWSBURY	(H)	
Tues 23	FLC3 Sheffield U.	(A)	
Sat 27	Plymouth Argyle	(A)	
Tues 30	Walsall	(A)	
October			
Sat 4	STOCKPORT	(H)	
Tues 7	BOURNEMOUTH	(H)	
Sat 11	Doncaster Rovers	(A)	
Wed 15	League Cup 4	(A)	
Sat 18	Brighton & H.A.	(A)	
Sat 25	TORQUAY U.	(H)	
Wed 29	League Cup 5	(A)	
November			
Sat 1	Rotherham U.	(A)	
Sat 8	BARNLEY	(H)	
Sat 15	FA Cup 1	(A)	
Wed 19	League Cup S.F.	(A)	
Sat 22	ROCHDALE	(H)	
Tues 25	FULHAM	(H)	
Sat 29	Mansfield Town	(A)	
December			
Wed 3	League Cup S.F.	(A)	
Sat 6	FA Cup 2	(A)	
Sat 13	BRADFORD C.	(H)	
Sat 20	Bristol Rovers	(A)	
Fri 26	Orient	(A)	
Sat 27	GILLINGHAM	(H)	
1970			
January			
Sat 3	WALSALL (3)	(H)	
Sat 10	Shrewsbury Town	(A)	
Sat 17	PLYMOUTH A.	(H)	
Sat 24	Bury (4)	(A)	
Sat 31	Stockport County	(A)	
February			
Sat 7	DONCASTER (5)	(H)	
Sat 14	Barrow	(A)	
Sat 21	Torquay United (6)	(A)	
Sat 28	BRIGHTON	(H)	
March			
Tues 3	TRANMERE R.	(H)	
Sat 7	Rochdale (LCF)	(A)	
Wed 11	Reading	(A)	
Sat 11	MANSFIELD (S.F.)	(H)	
Tues 17	BURY	(H)	
Sat 21	Tranmere Rovers	(A)	
Fri 21	ROTHERHAM U.	(H)	
Sat 28	READING	(H)	
Mon 30			
Tues 31	Barnsley	(A)	
April			
Sat 4	Halifax Town	(A)	
Wed 8	Fulham	(A)	
Sat 11	FA Cup Final	(A)	
Tues 14	SOUTHPORT	(H)	

FOOTBALL COMBINATION

Date	Opponents	Attendance	Result
August			
Sat 16	PETERBORO'	1,326 (H)	4-2
Sat 23	Norwich City	(A)	0-0
Sat 30	TOTTENHAM H.	1,683 (H)	2-2
September			
Sat 6	Gillingham	(A)	2-3
Sat 13	BOURNEMOUTH	1,124 (H)	3-3
Tues 23	Northampton Town	(A)	
Sat 27	SWINDON T.	(H)	
October			
Wed 1	Crystal Palace	(A)	
Sat 11	BIRMINGHAM	(H)	
Sat 25	Tottenham H. (Cup)	(A)	
November			
Sat 1	SOUTHAMPTON	(H)	
Tues 4	Queens Park Rangers	(A)	
Sat 8	Leicester City	(A)	
Tues 18	WALSALL (Cup)	(H)	
Sat 22			
Sat 29	LEICESTER (Cup)	(H)	
December			
Tues 2	Walsall	(A)	
Sat 6	IPSWICH T.	(H)	
Sat 13	Bristol Rovers	(A)	
Tues 16	BIRMINGHAM (Cup)	(H)	
Sat 20	Arsenal	(A)	
Sat 27	Northampton (Cup)	(A)	
Tues 30	Walsall (Cup)	(A)	
1970			
January			
Sat 10	CHELSEA	(H)	
Sat 17	Plymouth Argyle	(A)	
Tues 20	TOTTENHAM (Cup)	(H)	
Sat 24	READING	(H)	
Tues 27	Birmingham (Cup)	(A)	
Sat 31	NORTHAMPTON (Cup)	(H)	
February			
Wed 4	Leicester City (Cup)	(A)	
Sat 7			
Sat 14	Fulham	(A)	
Sat 21	SWANSEA T.	(H)	
Wed 25	Cardiff City	(A)	
Sat 28			
March			
Sat 7	OXFORD UNITED	(H)	
Sat 14			
Sat 21	West Ham United	(A)	
April			
Sat 4	BRISTOL C.	(H)	

© Football League Ltd, 1969

Published by
Luton Town Football and Athletic Company Limited,
Kenilworth Road, Luton

Printed by
White Crescent Press Limited, Crescent Road, Luton.
Telephone Luton 23122



LUTON TOWN FOOTBALL AND ATHLETIC CO, LTD

KENILWORTH ROAD, LUTON, BEDFORDSHIRE
TELEPHONE 0582 23151

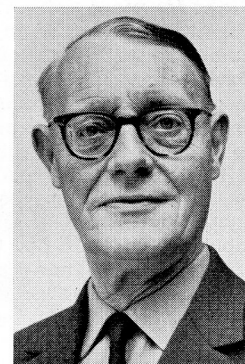
Established 1885 Incorporated 1897
First Professional Side Season 1891-1892
Football League Division III Champions 1936-37
Football League Division II Runners-up 1954-55
FA Challenge Cup Finalists 1958-59
Football League Division IV Champions 1967-68

OFFICIAL
PROGRAMME
20 SEPTEMBER
1969

Directors: A. T. HUNT, *Chairman*, L. S. HAWKINS, *Vice-Chairman*,
J. A. C. BAIN, R. I. BURR, T. HODGSON, H. RICHARDSON
Secretary: R. Readhead Manager: Alec Stock
Hon. Medical Officers: Dr. C. J. Buckingham, M.B., B.S. and
Dr. P. J. Burrows, M.B., B.Ch., D.Obst., R.C.O.G.
Hon. Dental Surgeon: A. Hargreaves, Esq.
Hon. Solicitor: E. Waller, Esq. Auditors: Messrs Keens, Shay, Keens & Co

New Series
Vol. 1. No. 8.

Eric Pugh's Page



Since the last programme was published, the Town have played three away matches and avoided defeat in all, with pride of place going, perhaps, to their League Cup success at Millwall.

This was attained near the end of a gruelling match which went into extra time and Keith Allen came along with the golden goal.

Prize for this is a third round visit to the Second Division leaders, Sheffield United, at Bramall Lane next Tuesday and, so confidently is the team playing at the moment, that they are entitled to make the trip with real hope of forcing a replay at least.

Greatest test so far

For Luton teams, this is no new ground, because they have tried conclusions with United in the past in both the First and Second Divisions, but this will probably prove to be their greatest test of the season.

A point from the clash with Bradford City at Valley Parade last Saturday was followed by a thoroughly decisive win at Southport three days later. On a tricky, greasy surface, it proved to be quite a

hard fought game, with the Town having the better of the first half.

Never much doubt

At the same time, they had to withstand some pressure near to the interval, but once they took the lead after 57 minutes, there was never much doubt that they would hold on to the two points that were then within their grasp.

Once again it was Malcolm Macdonald, with his eighth goal in 12 matches, he set the team on the winning path, and he is certainly proving a more than adequate replacement for Bruce Rioch.

Emerges as a good deal

in fact, with John Collins, Matt Tees and

Chris Nicholl all coming into the proceeds of the Rioch transfers and still leaving a margin of profit, this has now emerged as a very good deal indeed and has confounded some of the grumblers who were forecasting dire things for the club this season.

As it has happened, the Town could scarcely have made a better start to the season because they are currently leading the way in the Third Division with 14 points out of a possible 16 and, in addition, have remained unbeaten through four tough League Cup-ties.

Is this promotion year?

Manager Alec Stock firmly believes that this is Luton's year for further promotion and things certainly seem to be shaping that way.

Fortunately, the first team have steered reasonably clear of injuries and intelligent planning has meant that there is good cover for nearly every position.

Fight for place

This was indicated when Tony Read was hurt against Bristol Rovers and Sandy Davie came in to take over. In three matches, he has conceded only one goal and now Read is in the position of having to fight to regain his place.

This spirit of competition is healthy for any club and, maybe, the lack of it, contributed in large measure to the Town's tribulations over the past few years.

Every player knows that he has to fight for his place, and that cannot bring anything but good for the welfare of the club.

Should extend record

This afternoon, Shrewsbury Town, who once hammered the Town to a 6-1 defeat at Kenilworth Road, are the visitors and, on current form, the Town should extend their unbeaten home run which began twelve months last April.

Shrewsbury have had a somewhat unhappy start to the season, but nothing can be taken for granted, as Halifax showed recently.

Matches thick and fast

However, with the confidence that the brilliant start to the season has engendered, then it would be only a super pessimist who would forecast anything but a comfortable home win.

Matches come up thick and fast at

this stage of the season and the visit to Sheffield will be a vastly different proposition, of course.

If a replay is necessary, it will be at Kenilworth Road on Tuesday week (7.30 p.m.) and that will mean the postponement of the visit to Walsall to a later date.

Special train to Sheffield

A specially chartered train is being run to Sheffield which it is hoped will convey the best part of 400 supporters to cheer on the team in their bid to create club history by reaching the last sixteen of the League Cup.

Third Division teams have such a great record in this competition that the odds against another Third Division club appearing at Wembley cannot be all that long.

And, if the Town can surmount the Bramall Lane hurdle, followed by a reasonable pairing in the next round, they could well emulate the feats of Queen's Park Rangers and Swindon Town.

Cup-tie atmosphere here

After the visit to Sheffield comes one of the longest journeys of the season - to Plymouth. In the past, there has been only minimal support for the team when they have played in this football outpost.

This time, however, they will have the best part of 1,000 fans willing them to win. Two special trains have been chartered, are fully booked, and, as a result, the atmosphere should resemble that of a Cup-tie.

Must not abuse facilities

Various warnings about behaviour have been issued and I can only hope that those supporters who avail themselves of the facilities the club have provided at a very reasonable cost, will not abuse them and that this will be the forerunner of many more pleasant journeys.

Certainly, the club are willing to expand this service, but they must be sure that there will be no hooliganism,

continued on page 9

OUR COVER PICTURE

New centre-forward, Matt Tees, watches the ball go over when he tried a header during the match with Bristol Rovers.

By courtesy of Home Counties Newspapers Ltd.

CONNELLS

Auctioneers, Surveyors
Valuers and Estate Agents

5, Upper George Street, Luton

Telephone: 31261 for

Houses and Bungalows

COUNTRY HOUSES, COMMERCIAL AND
INDUSTRIAL PREMISES, COMPULSORY
PURCHASE NEGOTIATIONS IN

Luton and Surrounding Districts

Branch Offices throughout

HERTFORDSHIRE, BEDFORDSHIRE, BUCKINGHAMSHIRE
and at 62, GROSVENOR STREET, LONDON, W.1.



THE ONE STOP SHOPPING CENTRE for

Hardware, Electrical, Men's Wear, Fuel, Catering,
Footwear, Bookshop, Drapery, Furnishing, Toys &
Sports, Grocery, Greenfruit and Butchery with Credit
Facilities to suit your requirements.

PLUS DIVIDEND STAMPS

SUPERSTORE

4 NEW BEDFORD ROAD

LUTON. Tel: 21171

LUTON CO-OPERATIVE SOCIETY LTD



From Bob's Office

There has been full co-operation from Plymouth Argyle in making arrangements for nearly 1,000 of our supporters who will be making the trip to Devon next Saturday.

Two specially chartered trains are now running, with the second to be booked leaving Luton at 8 a.m. and arriving in Plymouth at 1.15 p.m.

Meeting the 'Invasion'

The other departs at 8.35 p.m., arriving at 1.45 p.m. and the Plymouth secretary, Graham Little is trying to arrange for a fleet of buses to meet the 'invasion' and convey the fans from the station to Home Park which is no great distance.

Similarly, he is hoping that transport will be available to take supporters back to the station after the match.

The train that was chartered first is due to leave at 5.50 p.m., and the other ten minutes later.

Tickets available

Stand tickets for the match are available at 10s and 8s and those who wish to buy them should write direct to the Plymouth club at Home Park, enclosing correct remittance and stamped, addressed envelope.

This will be our first venture in organising large scale travel and we hope to develop even further in this field by providing rail travel at reasonable prices.

The warning note

However, the warning note must be sounded. If there is any abuse of the facilities provided such as damage to the trains, the service will be withdrawn forthwith.

We hope this will be a memorable occasion and a happy day for all concerned. Do not allow a few hotheads to spoil what can be a very good thing indeed.

New booking office

Will supporters note that our new booking



Bob Readhead, Secretary

office is now in operation on the ground floor of No 68 Kenilworth Road for advance bookings and tickets for the current match.

One of the pleasing things about this season so far has been the vastly improved attendances at reserve team matches, these are more than double what they were last season.

We hope this trend will continue because some good football is being played in them, and supporters also have the opportunity to follow the progress of the first team in their away matches.

Youth cup-tie here

Unless a replay is necessary of our League Cup-tie with Sheffield United, our ground has been placed at the disposal of Limbury Old Boys on Tuesday, 30th September, for their second round FA Youth Cup-tie with Friern Barnet.

Limbury are our protégés and supporters will have the chance to see players who may well emerge as stars of the future. Kick-off is at 7.30 p.m. and arrangements will be made to let them know the progress of the first team's match at Walsall the same evening.

Sheffield tickets

Plenty of tickets are available for the match at Sheffield next Tuesday (7.45 p.m.), priced at 13s 6d and 9s, on sale at the new booking office now.

Should a replay be necessary it will be on Tuesday week (7.30 p.m.). Season ticket-holders can obtain a seat on production of Cup match No 3 ticket, 10s each. Tickets will also be available to non season ticket-holders.

The Vauxhall Breed's got style.



Luton's leading newsagents

HOUGHTONS

CONFECTIONERS · TOBACCONISTS
GREETINGS CARD SPECIALISTS

- ★ 16 The Parade, Hill Rise
- ★ 3 Ashwell Parade, Sundon Park
- ★ 82 Putteridge Road, Stopsley
- ★ 253 Birdsfoot Lane
- ★ 150 Sundon Park Road
- ★ Jansel House, Stopsley
- ★ 217 Dunstable Road
- ★ 8 Hillborough Crescent, Houghton Regis

**Whenever you are near – pay us a visit
We will be pleased to serve you**

EVENING **POST**

ENTER
'CROSS THE BALL'
EVERY WEEK
AND WIN
BIG MONEY
PRIZES



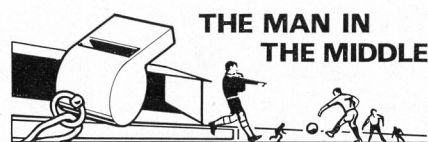
RICHARDSON and BOTTOMS

LIMITED

*Builders
and
Contractors*

**107, BISCOT RD.
Luton**

Telephone: 25628



REG PAINE (Hounslow)

'Come on mister – referee our game for us!' It was appeals like this, from hordes of grubby little soccer-mad urchins, that started **Reg Paine** on the road to a refereeing career.

He was a youth club leader at the time (in 1949) and, there being a tremendous shortage of referees, he was persuaded to step in.

The way up

He worked initially in junior football, reaching the old London Mid-Week League in 1952. Eventually he became a referee in the Athenian League, then the Football Combination. Promotion to the Football League came in 1964 after two years as a linesman.

Sometimes his League appointments take him on marathon journeys. 'I reckon I travelled further than any other referee last Easter', he said. 'I was in Torquay on the Saturday and Burnley two days later – a total trip of 864 miles'.

Qualified coach

Mr Paine, married with three children, is a local government administrative officer in Hounslow. He is a qualified FA Coach.

As he is now approaching the compulsory retirement age of 47 this will, unfortunately, be his last season as a League referee.

Eric Pugh's page (continued)

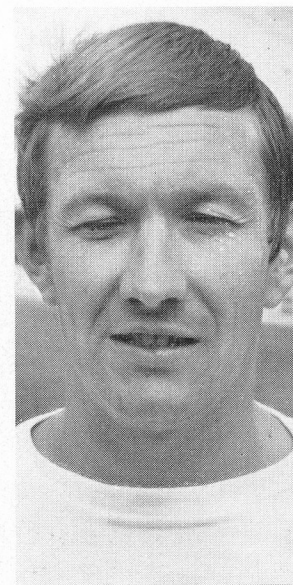
otherwise things will be spoilt for everybody.

Gregg – superb goalkeeper

For the moment, though, concentration must be on the job in hand this afternoon, and let us welcome Shrewsbury whose manager, Harry Gregg, earned fame as a superb goalkeeper with Ireland and Manchester United.

This is his first venture on the management side and he would seem to have the makings of a useful side once the present teething troubles are over.

PERSONALITY PROFILE



7 FREDDIE JARDINE

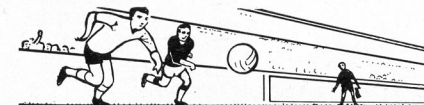
Freddie is the Town's longest serving player because he is now in his ninth season at Kenilworth Road.

Was signed originally from Dundee as an outside-left and made many first team appearances in this position.

However, it was not until he was converted into a defender after an experiment in a private trial match that he really commanded a regular place and he has made over 200 appearances in the first team for the club.

A bad injury received at Plymouth last October put him out of the game for many weeks, and although he was recalled and had some outings in his old position on the wing, he has had to be content with reserve team services so far this season.

At the same time, it is comforting to think that there is such an experienced player waiting to step in should the necessity arise.





A smiling start to the season for Shrewsbury's players as they face the camera, but manager Harry Gregg (centre) seems in a rather more solemn frame of mind.
Picture by courtesy of the 'Shropshire Star'.

Football League Review

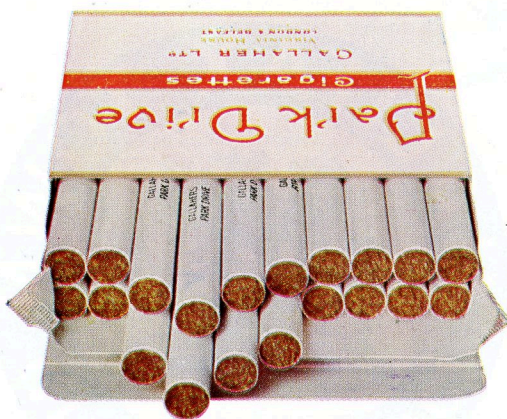


ONE SHILLING

THE OFFICIAL JOURNAL OF THE FOOTBALL LEAGUE



No flannel- All Flavour



Round here
that's what Park Drive
means to us
Park Drive Flavour

Unhappy start for Shrewsbury *By Tony Pullein*

Before their game at Bournemouth on Wednesday, Shrewsbury had lost three successive away League games and suffered a League Cup knockout at Fourth Division Southend.

Home form, too, has been erratic – they have won only one League game at Gay Meadow where they were beaten by Southport last Saturday. It all adds up to a most unhappy start for the Shropshire club.

Relegation fight again?

So it looks like another long haul against relegation, like last season when they finally escaped the drop by three points. One heartening sign, though, is the continued goalscoring form of former centre-half Alf Wood who again leads their scoring list. Last season he was tops with 13 in League and Cup.

Shrewsbury signed Alf from Manchester City in 1966 and for his first two campaigns at Gay Meadow, he shone as a stopper, rather than a scorer, of goals. He moved into the front line last season.

Knows the way

Trevor Meredith is another who knows the way to goal. While with Burnley he hit the vital goal which won them the League Championship in 1960. That was his first season in League football. Shrewsbury signed him in 1964.

When it's considered that six of the nine players who have appeared in attack this season have played in the First Division, and three have won senior international honours, it is difficult to understand why goals have been so scarce. Terry Harkin is a current Northern Ireland international, winning three caps last season.

Has been around

Terry has been around quite a bit. Commencing at Port Vale, he served Crewe – where he was top scorer with 35 goals in 1964/65 – Cardiff, Notts County and Southport before joining Shrewsbury towards the end of last season.

Jimmy McLaughlin, 12 times an Irish international, is in his second spell with Shrewsbury. He didn't get into Birmingham's League team, so he switched to Gay Meadow originally in 1960.

Just over three years later, he moved to Swansea where he remained for almost four years before putting in a snap spell with Peterborough. Jimmy rejoined Shrewsbury in 1967.

Dennis Hawkins had the odd experience at one stage of his career of having played more often for Wales Under-23s than in the Leeds First Division side. The big stars kept him out at Elland Road and he enjoyed regular League soccer only after signing for Shrewsbury last season.

In seniors at 16

Shrewsbury signed Gerry Bridgwood from Stoke at the end of last season in a desperate bid to pull clear of relegation.

Gerry first played in Stoke's senior side when he was 16 but suffered from inconsistency and never really won a regular place.

David Roberts is now in his third season with Shrewsbury, following service with Aston Villa for whom he played in a dozen First Division games.

Another ex-Villa man

Geoff Fellows is also a former Villa man, though he didn't get into their senior side. Normally a full-back, Geoff recently lined up in attack. He has been a regular for the past four seasons. The other possibility for a place in the attack is young Dick Moir who was given his League debut this season.

Shrewsbury will possibly field their two centre-halves John Moore and Peter Dolby. Moore was an Everton reserve player, but got his chance in League football in 1967/68 after moving to Stoke City. He linked with Shrewsbury in 1968. Dolby is a loyal club man, playing in several positions and totaling more than 200 League appearances for them.

Arrived from Newcastle

Left-half, Graham Clapham, arrived from Newcastle two years ago. Goalkeeper John Phillips and full-back Tony Loska, both Shrewsbury finds, went into the first-team last season. Tony Gregory, another Shrewsbury discovery, came in during 1964/65.

Continued on page 18



New Hatters' Club is being well supported

Here is a picture of the interior of our new Hatters' Club which has enjoyed so much success since it was opened for the first time a few weeks ago.

Already, it has become highly popular, and not only on match days. In fact, the volume of bookings for private functions, such as dinners and dances has passed our expectations when we planned this venture.

Luxurious

Now, we feel we have the most luxurious hall that is available in the district and that it will fill an increasing role in the social life of the town.

On Saturday match days, the club is

open from 12 noon to 2.55 p.m., from 4.45 p.m. to 5.30 p.m. and from 6 o'clock to 11.30 p.m.

Have a meal there

Hot meals and snacks are available at reasonable prices and many people are now taking the opportunity of having a meal here, either before or after the matches.

Membership has been given automatically to season ticket-holders and those who wish to join can obtain forms from the Club today both before and after the match. Join now. You will not regret the outlay of £2, or £3 for husband and wife.

Now a Special Train to Sheffield

By Harry Haslam, Entertainments Manager

It has now been possible to charter a special train to take supporters to the important League Cup-tie with Sheffield United at Bramall Lane next Tuesday.

The train will leave Luton at 3.40 p.m., arriving in Sheffield at 6.06 and the return journey will begin at 10 o'clock, with arrival time in Luton, 12.23 a.m.

Return fare is 25s, there are 374 seats available, and bookings should be made at the club's Pools Offices, at 231 Dunstable Road.

Two on Saturday

In point of fact, this will become the first of our train ventures because the original one does not go into action until Saturday.

Then, two special trains, which have been fully booked to a capacity of about 900 will leave for Plymouth. Fans should note that the kick-off at Sheffield is 7.45 p.m. and at Plymouth, 3.15 p.m.

Hoping for no trouble

Of course, the fervent hope is that both these trips will go off smoothly and without trouble. If they do, then further arrangements of this sort are envisaged, including the possibility of having as many as four trains to Brighton for the match there on 18th October.

Our new sports centre in Dunstable Road will be opened shortly and one of the items which will be on sale is a new table football game, called '4-2-4'.

Realistic game

View has been expressed that this is the most realistic table football game ever and it will be advertised nationally soon.

It will not be on general sale in the shops, but by mail order only. However, the manufacturers have made an exception and the game will be available at the shops of League clubs, including our own, priced at 61s.

We feel that this will make an attractive Christmas present and we shall be glad to take orders at the Centre, 231 Dunstable Road.

Lucky Mascot

Today's lucky mascot is nine-year-old Mark Taylor, of 8 St Winifred's Avenue, Luton, a keen supporter of the Town who is described as being 'football mad', and this is likely to be the biggest thrill of his life.



Parents of other boys who would like to act as mascots at home matches should apply to me at the Pools Office.

Supporter of the Week

Supporter of the week is 8½-year-old Jonathan Robinson, of 47 Orchard Way, Letchworth, who, to see the match with Bristol Rovers, cycled 17 miles from Letchworth to Sundon Park where he left his bike and walked to the ground.

Afterwards, he walked back to Sundon and cycled back to Letchworth which he reached at 8.30 p.m.

He attends all the home matches, both first and reserve teams, and he certainly qualifies for today's title for his keenness.

BONANZA WINNERS Bristol Rovers Match

- 3302 Mr Jerdmonson, 60 Cades Close, Luton, £15.
1362 Mr Draper, 26 Chertsey Close, Luton. 'Goali' Transistor radio.
0784 Mr Spokes, 45 London Road, Dunstable. 'Goali' Transistor radio.
3304 Mr Jerdmonson, 60 Cades Close, Luton. Odeon Cinema tickets.
0719 Mr O'Connor, Chequers Inn, Whipsnade. Odeon Cinema tickets.

LUTON TOWN FC POOL

This Week's Lucky Numbers

- Saturday:** £20-21044; £15-33167; £5-07554; £5-28592; £2-45306; £2-10831; £1-04292.
Monday: £20-18152; £15-29761; £5-40890; £5-16711; £2-36497; £2-15274; £1-46193.
Tuesday: £20-12008; £15-24179; £5-09217; £5-30151; £2-08368; £2-26311; £1-11659.
Wednesday: £20-43533; £15-06093; £5-49762; £5-00013; £2-41475; £2-38618; £1-13413.
Thursday: £20-03062; £15-22527; £5-05975; £5-32806; £2-20719; £2-01623; £1-33675.
Friday: £20-25906; £15-10352; £5-17263; £5-02637; £2-09864; £2-35731; £1-17082.

Coming Matches

DIVISION III

SATURDAY, 4th OCTOBER

LUTON TOWN

v

STOCKPORT COUNTY

KICK-OFF 3 p m

Prices of admission

Centre Stand 10s, Wing Stand 8s,
Enclosure, Bobbers' Stand and Oak Road
Terrace 6s (Children 3s), Kenilworth
Road Terrace 5s (Children 2s 6d).

FOOTBALL COMBINATION

SATURDAY, 27th SEPTEMBER

LUTON TOWN

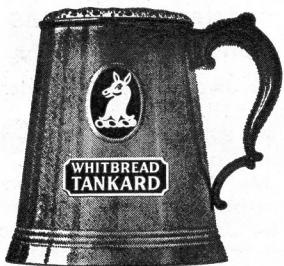
v

SWINDON TOWN

KICK-OFF 3 p m

Prices of admission

Enclosure 2s 6d (children 1s 6d),
Grandstand 3s.



**WHITBREAD
TANKARD**
cool,
clear, refreshing

Available in all Bars

NEWS FROM THE SUPPORTERS' CLUB

By FRANK SHEPHARD

Our travel section is again covering all away matches, and we would like to see more members taking advantage of the facilities that are provided.

Remember that you are covered by special insurance when travelling with us, and we always take the precaution of parking our coaches well away from the ground itself.

Friendly relationship

Invariably, we arrive early which gives us the chance to meet our opposite numbers in the home Supporters' Club, thus establishing a friendly relationship.

Arrangements are now complete for our weekend stay in Brighton. We leave Luton at 6 p m on Friday, 17th October and return after lunch on the Sunday.

Accommodation has been booked at a seafront hotel. All in charge, including ull meals for the period – £9. Please book today for this autumn weekend.

Exercise this right

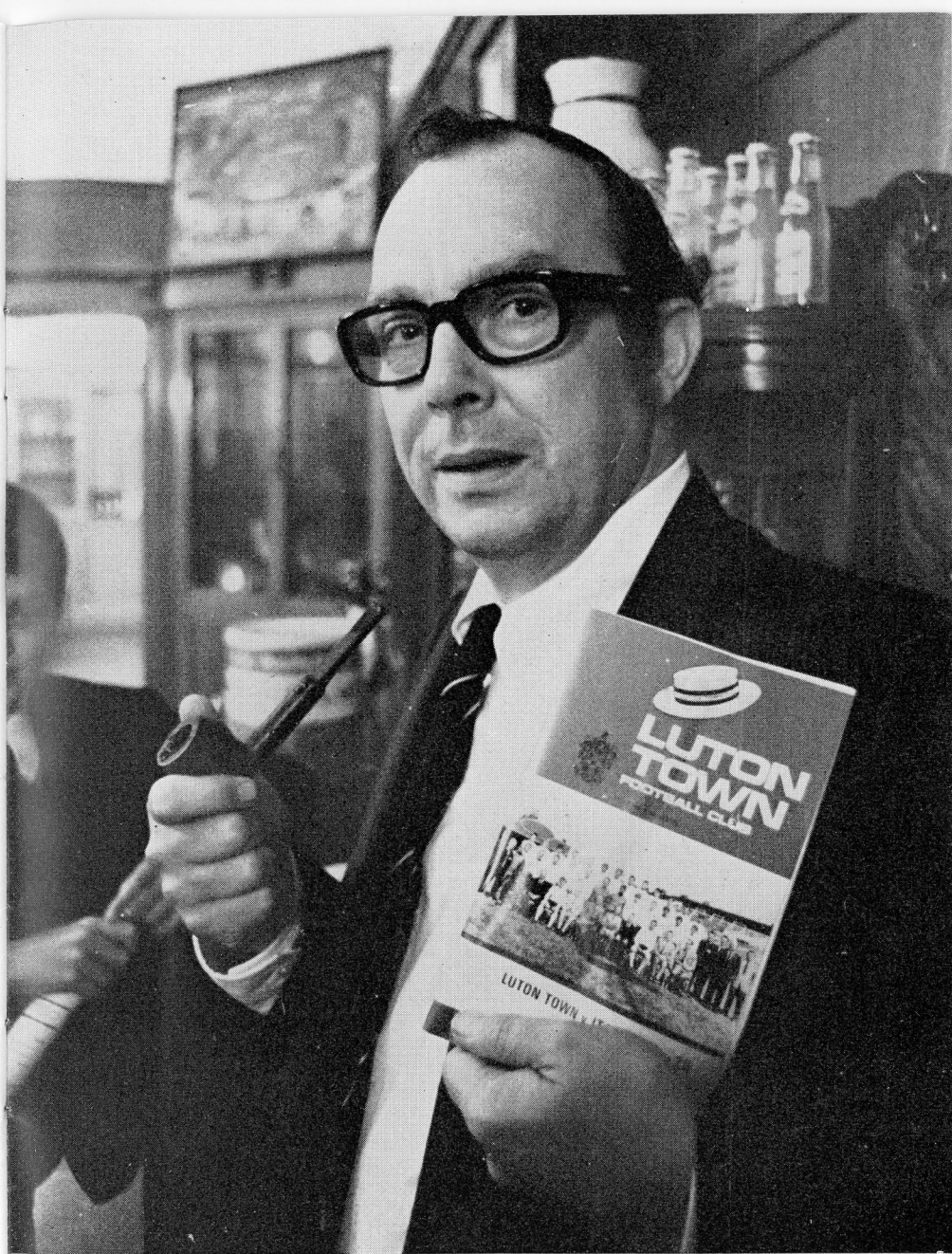
As a personal suggestion to overcome crowd trouble at football matches, I put forward the following. Every club reserves the right of admission, and if this were exercised more often, it would go a long way towards ending the fighting we see on the terraces.

For example, refuse to admit the hob-nailed boot brigade until they have removed those offensive weapons and try to encourage visiting supporters to use a part of the ground away from the Kopites.

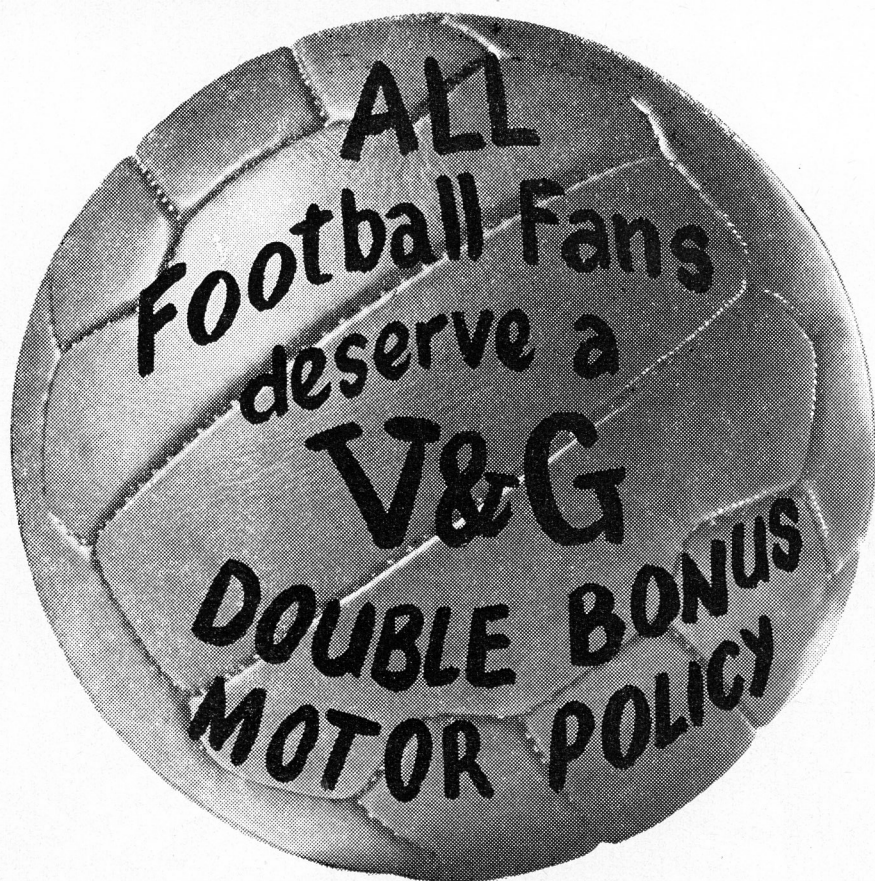
Visit the shops

Remember to visit our shops on the ground. Lapel badges 3s each, rosettes 2s, Luton pennants 2s, pens 6d and 1s 6d – just to give you some idea of the range of our lines.

Today, we welcome all supporters from Shrewsbury and hope to meet them during the game or in our club which, incidentally, opens at 6 p m.



Comedian Eric Morecambe, a loyal, enthusiastic supporter of Luton Town FC, is obviously pleased with the new style programme, as he displays it for all to see.



**THE V&G
DOUBLE BONUS
MOTOR INSURANCE POLICY
GIVES FAIRER TERMS
TO EVERY DRIVER**

For further information contact your local officially appointed V & G Insurance Broker, or write or phone the address below.

V&G THE VEHICLE & GENERAL GROUP OF INSURANCE COMPANIES

Group Headquarters,
Administration & Operations;
Bushey House,
High Street, Bushey,
Hertfordshire.
Tel: 01-950 4311.

THE VEHICLE & GENERAL INSURANCE CO. LTD.
LIFE, CASUALTY & GENERAL INSURANCE CO. LTD.
AUTOMOBILE & GENERAL INSURANCE CO. LTD.
THE GENERAL & COMMERCIAL MOTOR INSURANCE CO. LTD.
METROPOLITAN GENERAL INSURANCE CO. LTD.
WORLD AUXILIARY INSURANCE CORPORATION LTD.
PIONEER LIFE ASSURANCE CO. LTD.

	APPEARANCES			GOALS		
	FL	FLC	FC	FL	FLC	FC
<i>Goalkeepers</i>						
DAVIE, A.	2	1	3	—	—	—
READ, A.	6	3	—	—	—	—
STARLING, A.	—	—	2	—	—	—
<i>Full Backs</i>						
BANNISTER, J.	8	4	—	—	—	—
DOUGAN, M.	3	2	3	—	—	1
HOOPER, G.	—	—	3	—	—	—
JARDINE, F.	—	—	5	—	—	—
RYAN, J.	5	2	2	—	—	—
<i>Half Backs</i>						
BRANSTON, T.	3	4	1	—	1	—
KEEN, M.	8	4	—	1	—	—
GUILD, A.	—	—	5	—	—	—
MOORE, J.	2	1	3	—	—	—
NICHOLL, C.	4	—	—	1	—	—
SLOUGH, A.	7	4	—	—	—	—
THOMPSON, P.	—	—	—	—	—	—
WAINWRIGHT, R.	—	—	3	—	—	—
WADE, K.	—	—	—	—	—	—
<i>Forwards</i>						
ALLEN, K.	8	4	—	2	2	—
FRENCH, G.	8	4	—	2	—	—
HARRISON, M.	—	—	5	—	—	—
LEWIS, B.	4	2	2	—	2	1
MACDONALD, M.	8	4	—	6	2	—
PHILLIPS, P.	—	—	5	—	—	3
SHEFFIELD, L.	4	4	3	—	2	4
STEVENSON, M.	—	—	5	—	—	2
TEES, M.	4	—	—	1	—	—
SPARKES, N.	—	—	2	—	—	—
HINES, V.	—	—	—	—	—	—
ADAIR, K.	—	—	—	—	—	—
LEE, R.	—	—	3	—	—	—
HIPWELL, R.	—	—	1	—	—	—
COLLINS, J.	8	2	—	3	—	—
OPPONENT	—	—	—	1	—	—

FL – Football League; FLC – Football League Cup; FC – Football Combination

LATEST RESULTS

FOOTBALL COMBINATION

Gillingham 3 Luton Town 2

Starling; Ryan, Jardine; Wainwright, Guild, Moore; R. Lee, Phillips, Sheffield, Stevenson, Harrison. Substitute: Adair.

Scorers: Phillips, Stevenson.

Luton Town 3 Bournemouth 3

Starling; Ryan, Jardine; Wainwright, Branston, Guild; Sparkes, Phillips, Sheffield, Stevenson, Harrison.

Scorers: Sheffield (2), Phillips.

DIVISION III

Luton Town 4 Bristol Rovers 0

Read; Dougan, Bannister; Keen, Nicholl, Slough; Collins, Macdonald, Tees, Allen, French. Substitute: Lewis.

Scorers: Collins, Tees, Macdonald, Allen.

Bradford City 1 Luton Town 1

Davie; Dougan, Bannister; Keen, Nicholl, Slough; Collins, Macdonald, Tees, Allen, French. Substitute: Moore.

Scorer: Allen.

Southport 0 Luton Town 3

Davie; Dougan, Bannister; Keen, Nicholl, Slough; Collins, Macdonald, Tees, Allen, French. Substitute: Sheffield

Scorers: Macdonald, French, Nicholl.

FOOTBALL LEAGUE CUP REPLAY

Millwall 0 Luton Town 1

Davie; Dougan, Bannister; Keen, Branston, Slough; Collins, Macdonald, Sheffield, Allen, French. Substitute: Moore.

Scorer: Allen.

SOUTH-EAST COUNTIES LEAGUE

Luton Town 2 Crystal Palace 0

Dalrymple; Hooper, Sage; Hipwell, Thompson, Wade; Furrage, Markham, Sorbie, Hines, Tuffs.

Scorers: Markham, Tuffs.

Colchester United 2 Luton Town 1

Dalrymple; Hooper, Olive; Wade, Thompson, Hipwell; Surridge, Sorbie, Tuffs, Markham, Adair. Substitute: Sage.

Scorer: Tuffs.

Tony Pullein continued

Shrewsbury's last trip to Kenilworth Road was on 5th March last:

Luton (1) 2 Shrewsbury (0) 1
(Allen, Keen) (Harkin)
14,337

Luton: Davie; Dougan, Bannister; Slough, Branston, Moore; French, Keen, Sheffield, Allen, Jardine.

Shrewsbury: Phillips; Mathias, Fellows; Moore, Wood, Dolby; Bridgwood, Boardman (Pountney), Harkin, Douglas, Hawkins.

Our League record against Shrewsbury reads:

	P	W	D	L	For	Ag	Pts
Home	3	2	0	1	6	8	4
Away	3	1	0	2	3	4	2
	6	3	0	3	9	12	6

We're top of the league!

Team effort.

That's what makes Skefko the leading manufacturer of rolling bearings in the country. We're working together to make even better bearings. Faster. Cheaper. And always on time.

What's in it for us? A good secure job for a start. And good benefits and promotion prospects too. Take it from us - Skefko's a great company to team up with.



SKF

THE SKEFKO BALL BEARING CO., LTD. LUTON, BEDFORDSHIRE

HALF TIME SCORES

FIRST LIST

A	Arsenal	Man. Utd.
B	Crystal P.	Albion
C	Derby C.	Tottenham
D	Ipswich T.	Everton
E	Leeds Utd.	Chelsea
F	Liverpool	Stoke C.
G	Man. City	Coventry C.
H	Soton	Newcastle
K	Sunderland	Notts F.
L	West Ham	Sheff. Wed.
M	Wolves	Burnley
N	Aston Villa	Hull City

SECOND LIST

A	Blackburn	Millwall
B	Blackpool	Watford
C	Bolton W.	Portsmouth
D	Bristol C.	Norwich C.
E	Carlisle U.	Preston
F	Charlton A.	Birmingham
G	Leicester C.	Hudd'fld T.
H	Oxford Utd.	Middlesbro
K	Q.P.R.	Swindon T.
L	Sheff. Utd.	Cardiff C.
M	Barnsley	Orient
N	Brighton	Barrow

THIRD LIST

A	Fulham	Plymouth
B	Halifax T.	Doncaster
C	Mansfield	Bristol R.
D	Reading	Bourn'th
E	Rochdale	Bradford C.
F	Rotherham	Gillingham
G	Southport	Stockport
H	Torquay U.	Walsall
K	Tranmere	Bury
L	Bradford	Brentford
M	Crewe A.	Oldham A.
N	Darlington	Peterboro

THIS WEEK'S BALL DONOR:
ROBERT YATES, Shopfitters, 158 LEAGRAVE ROAD, LUTON

LUTON TOWN

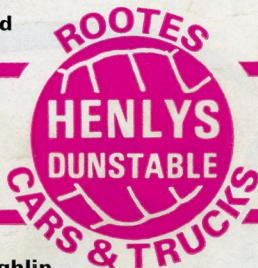
Colours: Shirts White
Shorts Black

Coach: JIMMY ANDREWS

	1	
	Sandy Davie	
2		3
Max Dougan		Jack Bannister
4	5	6
Mike Keen <i>Captain</i>	Chris Nicholl	Alan Slough
7	9	11
John Collins	Matt Tees	Graham French
	8	10
	Malcolm Macdonald	Keith Allen

Sub: **Laurie Sheffield**

Referee
R. A. PAINE
(Hounslow)



Linesmen
N. CHAMBERLAIN (*Mundesley*)
Red flag
L. H. HOLLAND (*Oxford*)
Yellow flag

Sub: **Jimmy McLaughlin**

	10		8
	Dennis Hawkins		Gerry Bridgwood
11		9	7
Trevor Meredith		Terry Harkin	Dave Roberts
6		5	4
Dave Pountney		Alf Wood	John Moore
	3		2
	Geoff Fellows		Tony Gregory
		1	
		John Phillips	

Colours: Shirts Blue
Shorts Blue

Manager: HARRY GREGG

SHREWSBURY TOWN

Result: LUTON TOWN

SHREWSBURY TOWN