



LUTON TOWN

FOOTBALL CLUB



Telephone: Luton 23151



DIVISION THREE

v STOCKPORT COUNTY

Saturday 4th October 1969 Kick-off: 3 p.m.

Official Programme: Price 1/-

FIXTURES 1969-70

DIVISION THREE

Date	Opponents	Attendance	Result
August			
Sat 9	BARROW	12,080 (H)	3-0
Wed 13	FLC1 Peterboro'	10,249 (A)	1-1
Sat 16	Bournemouth	9,735 (A)	1-0
Tues 19	FLC1 PETERBORO'	13,105 (H)	5-2
Sat 23	ORIENT	13,761 (H)	3-2
Tues 26	HALIFAX T.	13,759 (H)	1-1
Sat 30	Gillingham	7,792 (A)	2-0
September			
Tues 2	FLC2 MILLWALL	17,372 (H)	2-2
Sat 6	BRISTOL R.	15,198 (H)	4-0
Mon 8	FLC2 Millwall	14,125 (A)	1-0
Sat 13	Bradford City	10,851 (A)	1-1
Tues 16	Southport	4,003 (A)	3-0
Sat 20	SHREWSBURY	15,396 (H)	2-2
Tues 23	FLC3 Sheffield U.	16,884 (A)	0-3
Sat 27	Plymouth Argyle	14,111 (A)	3-1
Tues 30	Walsall	7,557 (A)	3-1
October			
Sat 4	STOCKPORT	(H)	
Tues 7	BOURNEMOUTH	(H)	
Sat 11	Doncaster Rovers	(A)	
Tues 14	Friendly ASTON VILLA	(H)	
Sat 18	Brighton & H.A.	(A)	
Sat 25	TORQUAY U.	(H)	
November			
Sat 1	Rotherham U.	(A)	
Sat 8	BARNSELY	(H)	
Sat 15	FA Cup 1		
Sat 22	ROCHDALE	(H)	
Tues 25	FULHAM	(H)	
Sat 29	Mansfield Town	(A)	
December			
Sat 6	FA Cup 2		
Sat 13	BRADFORD C.	(H)	
Sat 20	Bristol Rovers	(A)	
Fri 26	Orient	(A)	
Sat 27	GILLINGHAM	(H)	
1970			
January			
Sat 3	WALSALL (3)	(H)	
Sat 10	Shrewsbury Town	(A)	
Sat 17	PLYMOUTH A.	(H)	
Sat 24	Bury (4)	(A)	
Sat 31	Stockport County	(A)	
February			
Sat 7	DONCASTER (5)	(H)	
Sat 14	Barrow	(A)	
Sat 21	Torquay United (6)	(A)	
Sat 28	BRIGHTON	(H)	
March			
Tues 3	TRANMERE R.	(H)	
Sat 7	Rochdale	(A)	
Wed 11	Reading	(A)	
Sat 11	MANSFIELD (S.F.)	(H)	
Tues 17	BURY	(H)	
Sat 21	Tranmere Rovers	(A)	
Fri 27	ROTHERHAM U.	(H)	
Sat 28	READING	(H)	
Mon 30			
Tues 31	Barnsley	(A)	
April			
Sat 4	Halifax Town	(A)	
Wed 8	Fulham	(A)	
Sat 11	FA Cup Final		
Tues 14	SOUTHPORT	(H)	

FOOTBALL COMBINATION

Date	Opponents	Attendance	Result
August			
Sat 16	PETERBORO'	1,326 (H)	4-2
Sat 23	Norwich City	(A)	0-0
Sat 30	TOTTENHAM H.	1,683 (H)	2-2
September			
Sat 6	Gillingham	(A)	2-3
Sat 13	BOURNEMOUTH	1,124 (H)	3-3
Tues 23	Northampton Town	(A)	1-5
Sat 27	SWINDON T.	1,306 (H)	2-0
October			
Wed 1	Crystal Palace	(A)	1-2
Sat 11	BIRMINGHAM	(H)	
Sat 25	Tottenham H. (Cup)	(A)	
November			
Sat 1	SOUTHAMPTON	(H)	
Tues 4	Queens Park Rangers	(A)	
Sat 8	Leicester City	(A)	
Tues 18	WALSALL (Cup)	(H)	
Sat 22			
Sat 29	LEICESTER (Cup)	(H)	
December			
Tues 2	Walsall	(A)	
Sat 6	IPSWICH T.	(H)	
Sat 13	Bristol Rovers	(A)	
Tues 16	BIRMINGHAM (Cup)	(H)	
Sat 20	Arsenal	(A)	
Sat 27	Northampton (Cup)	(A)	
Tues 30	Walsall (Cup)	(A)	
1970			
January			
Sat 10	CHELSEA	(H)	
Sat 17	Plymouth Argyle	(A)	
Tues 20	TOTTENHAM (Cup)	(H)	
Sat 24	READING	(H)	
Tues 27	Birmingham (Cup)	(A)	
Sat 31	NORTHAMPTON (Cup)	(H)	
February			
Wed 4	Leicester City (Cup)	(A)	
Sat 7			
Sat 14	Fulham	(A)	
Sat 21	SWANSEA T.	(H)	
Wed 25	Cardiff City	(A)	
Sat 28			
March			
Sat 7	OXFORD UNITED	(H)	
Sat 14			
Sat 21	West Ham United	(A)	
April			
Sat 4	BRISTOL C.	(H)	

© Football League Ltd, 1969

Published by
Luton Town Football and Athletic Company Limited,
Kenilworth Road, Luton

Printed by
White Crescent Press Limited, Crescent Road, Luton.
Telephone Luton 23122



LUTON TOWN FOOTBALL AND ATHLETIC CO, LTD

KENILWORTH ROAD, LUTON, BEDFORDSHIRE
TELEPHONE 0582 23151

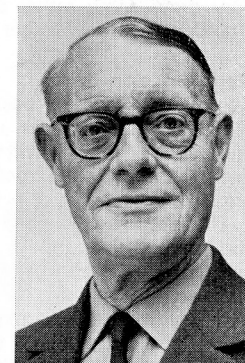
Established 1885 Incorporated 1897
First Professional Side Season 1891-1892
Football League Division III Champions 1936-37
Football League Division II Runners-up 1954-55
FA Challenge Cup Finalists 1958-59
Football League Division IV Champions 1967-68

OFFICIAL
PROGRAMME
4 OCTOBER
1969

New Series
Vol. 1. No. 9.

Directors: A. T. HUNT, *Chairman*, L. S. HAWKINS, *Vice-Chairman*,
J. A. C. BAIN, R. I. BURR, T. HODGSON, H. RICHARDSON
Chief Executive and Manager: Alec Stock Secretary: R. Readhead
Hon. Medical Officers: Dr. C. J. Buckingham, M.B., B.S. and
Dr. P. J. Burrows, M.B., B.Ch., D.Obst., R.C.O.G.
Hon. Dental Surgeon: A. Hargreaves, Esq.
Hon. Solicitor: E. Waller, Esq. Auditors: Messrs Keens, Shay, Keens & Co.

Eric Pugh's Page



Few people would have been bold enough to predict, before the season began, that the Town would play their first six away matches without defeat, collect eleven points in the process and concede only three goals.

However, such has been the splendid consistency of the team on opponents grounds that, with two home matches looming up, the Town have opened up an impressive gap of three points at the head of Division III.

Obviously, they will regard today's home meeting with Stockport County and the one with Bournemouth that follows on Tuesday as wonderful opportunities to consolidate what has already been gained.

Went out honourably

While there was, perhaps, some mild disappointment that the team could not manage to set up a new club record and progress beyond the third round of the League Cup, the fact is that they went out honourably to the powerful Sheffield United team at Bramall Lane.

Nor did they allow this first setback of the season to upset their confidence, as they showed at Plymouth on Saturday

when two late goals enabled them to coast to a 3-1 victory over Billy Bingham's boys.

And then, for good measure, they went to Walsall on Tuesday to secure victory by a similar margin.

Efficient displays

Both these successes were efficiently and professionally gained and it was a matter of satisfaction to all concerned that Matt Tees has settled down so well and to the extent of scoring four goals in the last two away games.

However, a glance at the list of scorers shows plainly that too much reliance is not being placed on one man to get the goals, as it has so often in the past.

On all the evidence the Town have a forward line, every member of which can be expected to figure in the scoring list and this could well prove to be a vital factor as the drive towards promotion is mounted.

Most dangerous

This ability to make the most of chances, combined with undeniable soundness at the back of the defence and domination in midfield has made the Town the most dangerous team in the Third Division.

There are, of course, many difficult obstacles to be surmounted yet, and that nothing can be taken for granted in football was amply demonstrated in the last home match when Shrewsbury Town came so close to ending the Town's unbeaten home record which goes back to a year last April.

In the end, it was salvaged with only minutes to spare, and the physical approach made to this match by Shrewsbury drew some rather strong comment afterwards from Manager Alec Stock.

Negative approach

However, it has often been obvious in the past that visiting teams, unable to match their hosts with skill, will try to gain some reward through a largely negative approach.

That has to be expected and surmounted and there will doubtless be other similar problems to be met before this season is out.

Today's visitors, Stockport, have made a disappointing start to the season, especially in view of the fact that for quite a long time during last campaign, they had aspirations towards winning promotion.

Surprise that they are so low

However, they could not maintain consistency in the final run in and finally had to be content with a position inside the top half of the table.

In view of that, it is rather surprising to see them occupying next to bottom position with only four points to show from eleven matches.

Their away record of one point out of twelve and only one goal scored, does not give them much hope of success this afternoon but, having dropped a couple of home points unexpectedly, the Town

will not make the mistake of under-rating the opposition.

Slumped to Fulham

In gaining their only away point, at Southport, Stockport have shown some measure of improvement, but they slumped again at home last Saturday when free-scoring Fulham beat them 4-1.

Next Tuesday's visitors, Bournemouth, could well prove to be a more difficult proposition, even though their form has been unpredictable and pretty much in and out.

League Cup successes

They shocked Tranmere Rovers a few weeks back by going to Prenton Park and winning 5-1, but that has not proved to be a true example of their away form.

Yet, they gained some honours in the League Cup in which they beat Bristol Rovers 3-0 and caused the exit of Sheffield Wednesday after having forced a draw at Hillsborough.

The next hurdle, Leicester City at home, was a little too much for them but, as did the Town at Sheffield, they went out fighting.

Tough away tests

After the two home games, come a couple of tough away tests on consecutive Saturdays. Next week, the team visits Doncaster Rovers, who have proved that the step back into the Third Division after having been Fourth Division champions last season, has not been too much for them.

Well supported Doncaster are expecting a bumper attendance on this occasion and have issued tickets for all their seated accommodation.

The Town's allocation is on sale now at 8s each and tickets will also be available for the visit to Brighton a fortnight today when two specially-chartered trains will take another big following.

OUR COVER PICTURE

Expressions of agony and anxiety as Malcolm Macdonald misses narrowly in the home match with Shrewsbury Town. John Collins looks particularly pained.

Picture by courtesy of Home Counties Newspapers Ltd.

CONNELLS

Auctioneers, Surveyors
Valuers and Estate Agents

5, Upper George Street, Luton

Telephone: 31261 for

Houses and Bungalows

COUNTRY HOUSES, COMMERCIAL AND
INDUSTRIAL PREMISES, COMPULSORY
PURCHASE NEGOTIATIONS IN

Luton and Surrounding Districts

Branch Offices throughout

HERTFORDSHIRE, BEDFORDSHIRE, BUCKINGHAMSHIRE
and at 62, GROSVENOR STREET, LONDON, W.1.



THE ONE STOP SHOPPING CENTRE for

Hardware, Electrical, Men's Wear, Fuel, Catering,
Footwear, Bookshop, Drapery, Furnishing, Toys &
Sports, Grocery, Greenfruit and Butchery with Credit
Facilities to suit your requirements.

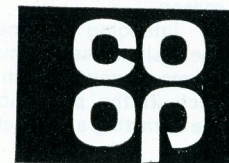
PLUS DIVIDEND STAMPS

SUPERSTORE

4 NEW BEDFORD ROAD

LUTON. Tel: 21171

LUTON CO-OPERATIVE SOCIETY LTD



From Bob's Office



Bob Readhead, Secretary

Big news of the week is that we have now arranged the friendly match with Aston Villa which was part of the agreement reached when the Rioch brothers were sold.

With both clubs out of the Football League Cup, the date agreed is Tuesday, 14 October (kick-off 7.30 p.m). This is an occasion on which everyone will pay and seats will be available at 10s each, and can be bought in advance from our new ticket office in Kenilworth Road.

Date confirmed

Tommy Docherty, the Villa manager, confirmed the date on Tuesday and has promised to bring a full strength side, including, of course, both Bruce and Neil Rioch.

This should prove to be a top-class attraction, especially as the Villa are now promising to get over their unhappy start.

Drawing the crowds

With our team playing so well, clubs which we visit are finding that they are attracting their biggest crowds of the season and, accordingly, are making the necessary preparations.

Doncaster Rovers, who will be our hosts next Saturday, have done so by reserving the whole of their stand seats.

Of these we have taken an allocation and they are on sale now at the ticket office at 8s each.

Tickets for Brighton

Available next week, will be stand tickets for our match at Brighton a fortnight today, priced at 10s and 7s 6d. For this we are running two special trains and look certain to have our biggest away following of the season.

Those intending to make the trip would be well advised to make certain of their tickets because, with both teams very much in the promotion issue, this looks like attracting a bumper gate.

New service

Tickets for both these games can also be obtained from the Pools Office at 231 Dunstable Road.

In an effort to provide as efficient a service as possible for our supporters, we are now supplying refreshments to those who use the Bobbers' Stand side of the ground.

To help us in this respect we need more people who are willing to take trolleys around that side of the ground and serve tea. Application should be made to me at my office.

Programme going well

Sale of the new-style programme is going encouragingly well, but has not yet reached the level which we had hoped.

With the *Football League Review* included we consider that this is a good shillings worth.

There is so much going on within the club these days that supporters cannot really afford to be without the combined publication. Tell your friends about it!

FRIENDLY MATCH (details above)

LUTON TOWN v ASTON VILLA

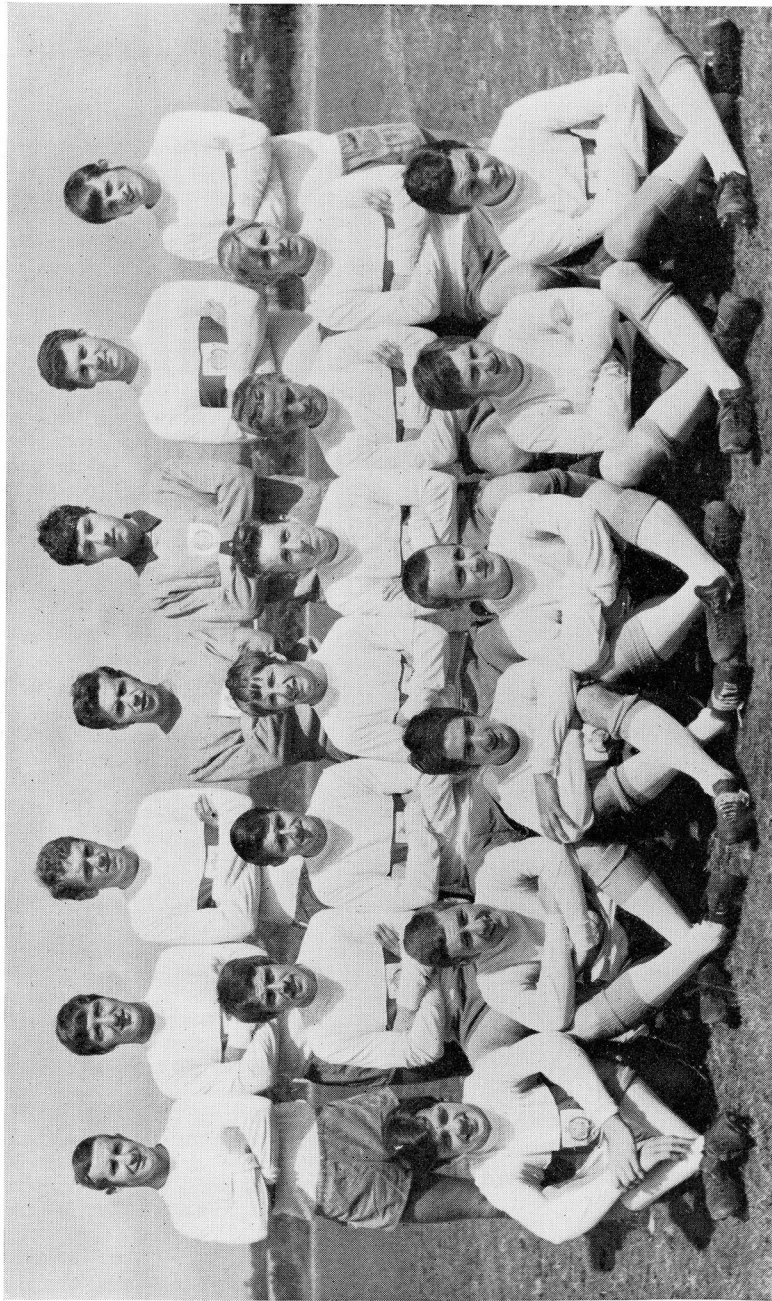
TUESDAY 14th OCTOBER (7.30 p.m)

DIVISION THREE PACEMAKERS

	P	W	D	L	F	A	Pts
Luton Town	...	11	8	3	0	26	8 19
Orient	...	11	6	4	1	17	9 16
Barnsley	...	11	7	2	2	18	11 16
Bradford C.	...	11	6	3	2	16	7 15
Doncaster R.	...	11	6	3	2	12	6 15
Torquay Utd.	...	12	6	3	3	20	10 15
Bristol R.	...	11	5	4	2	23	16 14

The Vauxhall Breed's got style.





Back Row (L to R) Billy Haydock, Doug Griffiths, Danny Campbell, Alan Ogley, Brian Lloyd, Gordon Low, Freddie Goodwin.

Middle Row: Peter Bebbington, Barry Hartle, Johnny Price, Jim Mulholland, Alex Young, Bobby Elgin.

Front Row (apprentices): Charlie Foley, Paul Wilkinson, Wayne Ashworth, David Hall, Jimmy Collier, Bev Wilson.

Picture by courtesy of the 'Manchester Evening News'.

Away Form Fails Stockport *By Tony Pullein*

One point and one goal is all Stockport County have to show from six away games this season.

They lost at Tranmere (0-3), Barnsley (0-1), Halifax (0-1), Torquay (0-3) and Plymouth (0-2) but managed to break their duck by drawing 1-1 at Southport in their last away match. Stockport have now played 21 away games without a win.

Consequently, it is now unlikely that County can make a serious bid for promotion as they did last season - even if they run into another inspired spell of ten games without defeat which, lifted them into second place. They are lingering too far away to effect that sort of recovery.

Stockport must now push all their energies into maintaining their Third Division status. Five summer signings have already been drafted into the side in an effort to halt the slide.

John Rowlands, the former Mansfield player who spent last season with Torquay, is their top scorer. Bobby Elgin, signed from Hearts, and Alan Morton, who developed in Crystal Palace's junior sides, have both been given a chance in attack.

Long wait

The other two newcomers are both defenders. Peter Bebbington started his career with Leicester City, but didn't get a League game until joining Barrow two years ago.

John Chapman emerged as a stylish full-back with Workington, moved to Reading in 1966 and settled down at wing-half. For the past three seasons he held a regular place in their defence.

There's no doubt Stockport are missing the striking ability of Bill Atkins, last season's top scorer with twenty-one League and Cup goals. They surprisingly allowed him to move to Portsmouth towards the end of the season. No one else has been able to fill the void since his departure, even Freddie Goodwin, the former Wolves wing-half, who last season became the first half-back in many moons to score four goals in one League game. Freddie has been moved up into attack this season.

Hopes of Mulholland

Manager Walter Galbraith will be hoping that, perhaps, Jim Mulholland can regain the sort of shooting form that made him

leading scorer in each of his two opening seasons in League soccer with Barrow in 1965/66 and the following campaign Stockport signed him during last season.

Another man to join the club last term was Barry Hartle, a player of vast experience in all four divisions of the League.

He kicked off with Watford, moving to Sheffield United in 1960. He spent six seasons at Bramall Lane, moving on to Carlisle where he remained for just over a year.

In at the deep end

Centre-half Danny Campbell was really thrown in at the deep end when he opened his career in senior soccer. He made his debut for West Bromwich in the League Cup final against West Ham in 1966.

Unfortunately, he wasn't able to maintain a regular place in the side so he decided to try his luck in US soccer. When he returned last January Stockport willingly offered him a contract.

Ex-Manchester City men

Two former Manchester City players are prominent in defence. Goalkeeper Alan Ogley, who started his career with Barnsley, held a regular place for some while in City's League team. After losing his place, though, he signed for County in 1967.

Full-back Billy Haydock was a centre-forward when he kicked off with Manchester City. He moved to Crewe where he switched from the wing to inside-forward and wing-half. Grimsby signed him in 1965 but he remained with them only a short while before linking with Stockport.

Wing-half Gordon Low got his chance with Huddersfield but spent eight years with Bristol City - making over 200 League appearances for them - before joining Stockport in 1968.

Continued on page 18

Luton's leading newsagents

HOUGHTONS

CONFECTIONERS · TOBACCONISTS
GREETINGS CARD SPECIALISTS

- ★ 16 The Parade, Hill Rise
- ★ 3 Ashwell Parade, Sundon Park
- ★ 82 Putteridge Road, Stopsley
- ★ 253 Birdsfoot Lane
- ★ 150 Sundon Park Road
- ★ Jansel House, Stopsley
- ★ 217 Dunstable Road
- ★ 8 Hillborough Crescent, Houghton Regis

Whenever you are near – pay us a visit
We will be pleased to serve you

Football League Review



THE OFFICIAL JOURNAL
OF THE FOOTBALL LEAGUE

ONE SHILLING



EVENING **POST**

ENTER
'CROSS THE BALL'
EVERY WEEK
AND WIN
BIG MONEY
PRIZES



RICHARDSON and BOTTOMS

LIMITED

*Builders
and
Contractors*

107, BISCOT RD.
Luton

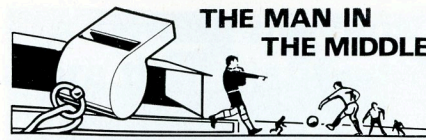
Telephone: 25628

No flannel- All Flavour



Round here
that's what Park Drive
means to us

Park Drive Flavour



**THE MAN IN
THE MIDDLE**

TOM REYNOLDS (Swansea)

Being an active person, Tom Reynolds willingly agreed to stand in as referee for a local match he had turned up to watch in 1957. An injury had prevented his playing, but this was the next best thing.

'While watching football was pleasant enough, I found more enjoyment acting as referee so, thereafter, I decided to do the job properly and took all the necessary exams,' he said.

He started in junior football in Swansea and covered matches in the Cardiff and Bristol areas before gaining promotion to the Welsh League.

The Football Combination provided his next stepping stone and it was in 1966 that he made the Football League linesmen's list. This is his second season as a League referee.

Mr Reynolds, who is married, is managing director of a specialist firm in the building trade.

Outside football, his hobbies embrace Round Table, squash and water skiing. He also enjoys a game of five-a-side football.

UNDER 23 INTERNATIONAL

ENGLAND v. SOVIET RUSSIA

at Old Trafford, Wednesday 22 October
(kick-off 7.30 p.m.)

Reserved seats can be purchased in advance. Prices 10/-, 12/6 or 15/-.
Please make applications direct to: The Secretary, Manchester United FC, Old Trafford, Manchester M16 0RA.

Applications should include remittance and stamped, addressed envelope which should be marked 'U.23' on the bottom left hand corner.

Admission to the ground side and paddocks will be by payment at the turnstiles on the night of the match at usual League prices.

PERSONALITY PROFILE



8 MIKE KEEN

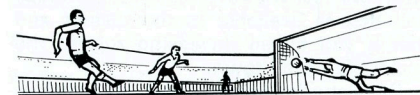
Now that Terry Branston is out of the team, Mike has become the captain and a good job he is making of it.

This is his second spell under the managership of Alec Stock with whom he was associated at Queen's Park Rangers during their tremendous run which took them straight through from Division III to Division I.

Keen skippered them during these two years of glory and did not miss a match in the process.

When Luton secured him early this year for a fee of £18,000, he had an unlucky time with injuries, but the rest during the summer put that right and he is now showing real authority and domination in midfield.

Queen's Park Rangers are his only previous club and he served them with great distinction over a long period.





New Hatters' Club is being well supported

Here is a picture of the interior of our new Hatters' Club which has enjoyed so much success since it was opened for the first time a few weeks ago.

Already, it has become highly popular, and not only on match days. In fact, the volume of bookings for private functions, such as dinners and dances has passed our expectations when we planned this venture.

Luxurious

Now, we feel we have the most luxurious hall that is available in the district and that it will fill an increasing role in the social life of the town.

On Saturday match days, the club is

open from 12 noon to 2.55 p.m., from 4.45 p.m. to 5.30 p.m. and from 6 o'clock to 11.30 p.m.

Have a meal there

Hot meals and snacks are available at reasonable prices and many people are now taking the opportunity of having a meal here, either before or after the matches.

Membership has been given automatically to season ticket-holders and those who wish to join can obtain forms from the Club today both before and after the match. Join now. You will not regret the outlay of £2, or £3 for husband and wife.

Our faith in the fans was more than justified

By Harry Haslam, Entertainments Manager

There is no doubt that the faith we had that it would be possible to transport several hundred supporters by train a considerable distance without the slightest trouble, was completely justified.

After the comparatively short trip to Sheffield which went off without a hitch, except for a delay on the return journey which could not be avoided, two trains went to Plymouth.

Everything was smooth

Again, everything went smoothly and, at the end of the journey, there was not even the slightest damage, nor had there even been any hint of trouble.

Those supporters who were escorted from the ground during the game after clashes with Plymouth fans had a different method of transport and did not travel on either of our trains.

I would like to thank all supporters who went with us for the magnificent way in which they behaved. The trip was a credit to the club and to the game in general, and this mode of travel is definitely the pattern for the future.

Stewards' great job

Our club stewards did a great job and I cannot thank them enough.

Two trains have been chartered for the visit to Brighton a fortnight today, fare £1. First will leave at 9.15 a.m., arriving Hove 12.14 p.m., returning at 5.17 p.m. and arriving in Luton at 8.18 p.m.

Second train will leave at 10.37 a.m., arriving at 1.32 p.m. and returning at 5.44 p.m., arriving Luton at 8.50 p.m.

Demand will be heavy

Bookings are being accepted at the Pools office, 321 Dunstable Road, and, judging by the previous two trips, the demand will be heavy. Some stand tickets at 7s 6d and 10s will be available for this match.

In addition, I am hoping to arrange for one train to go to Doncaster next Saturday and hope that details will be given over the loudspeaker system this afternoon.

Tonight, at the Hatters' Club, we are presenting The Margerine, a professional group from Jersey who are on a tour of



this country. They have proved popular wherever they have been and should be a considerable attraction.

Supporter of the Week

Mr A. J. Philpott, 58 Cranleigh Gdns, Luton

Mr Philpott has been watching the Town since he was nine years old in 1953 and has been a regular supporter, including away matches, ever since.

So keen is he that he intends to see the home match with Barnsley on 8 November, despite the fact that he will not be leaving Uganda by air until 1.15 a.m. the same day.

Allowing for time differentials, he expects to be back in Luton by 11 a.m. No one could be much keener than that.

He is going on a five weeks tour of Zambia, Malawi, Tanzania, Kenya and Uganda and congratulates himself that he will miss only two home matches.

Finally he says, 'Congratulations on the Hatters' Club of which I am a proud member'.

Mascot of the Week

Jack Benson, of 30 Hendon Avenue, London N3 - a keen and regular supporter, despite the distance.

LUTON TOWN FC POOL This Week's Lucky Numbers

Saturday: £20-26221; £15-43084; £5-22949; £5-12031; £2-09707; £2-46208; £1-19503.
Monday: £20-14848; £15-37910; £5-16471; £5-42088; £2-11393; £2-00641; £1-16219.
Tuesday: £20-03182; £15-30162; £5-12979; £5-23025; £2-49056; £2-31725; £5-10581.
Wednesday: £20-44751; £15-15544; £5-28845; £5-18999; £2-02803; £2-24314; £1-17618.
Thursday: £20-13945; £15-07412; £5-35127; £5-06285; £2-40518; £2-21637; £1-08243.
Friday: £20-32109; £15-24876; £5-01375; £5-28279; £2-05198; £2-04736; £1-17501.

Coming Matches

DIVISION III

TUESDAY, 7th OCTOBER

LUTON TOWN

v

BOURNEMOUTH

KICK-OFF 7.30 p.m.

Prices of admission

Centre Stand 10s, Wing Stand 8s,
Enclosure, Bobbers' Stand and Oak Road
Terrace 6s (Children 3s), Kenilworth
Road Terrace 5s (Children 2s 6d).

FOOTBALL COMBINATION

SATURDAY, 11th OCTOBER

LUTON TOWN

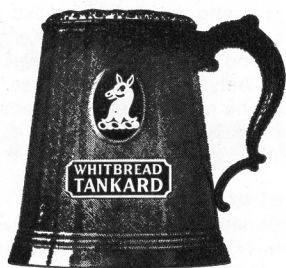
v

BIRMINGHAM CITY

KICK-OFF 3 p.m.

Prices of admission

Enclosure 2s 6d (children 1s 6d),
Grandstand 3s.



WHITBREAD
TANKARD

cool,
clear, refreshing

Available in all Bars

NEWS FROM THE SUPPORTERS' CLUB

By FRANK SHEPHARD

Our annual general meeting turned out to be a lively affair and although the main items discussed were of an internal nature, it was gratifying to see the interest shown by some of our younger members.

A vote of thanks was passed to the Board, Alec Stock and the players for the fine displays of football we have seen and our best wishes went to the club in their ambition to win promotion this season.

No change on committee

There was no change in the constitution of the committee, all the retiring members being returned unopposed.

We have all enjoyed the entertaining performance of referee Roger Kirkpatrick on the field, but, at the League Cup-tie at Sheffield, he helped the supporters' coach by guiding us to the ground.

He went out of his way to wait for us at the different turnings, thus enabling us to reach the ground without delay.

New club ties available

We now have a stock of new club ties at 17s 6d each which are on sale on the ground and lapel badges (3s) and rosettes (2s) are other items on sale at our shops.

Tomorrow, the younger members of our travel section are doing battle on the football field against a team of members of the Newcastle United (London Branch) Supporters' Club.

Today, we welcome supporters from Stockport and hope to meet them in the Bobbers' Club after the match.

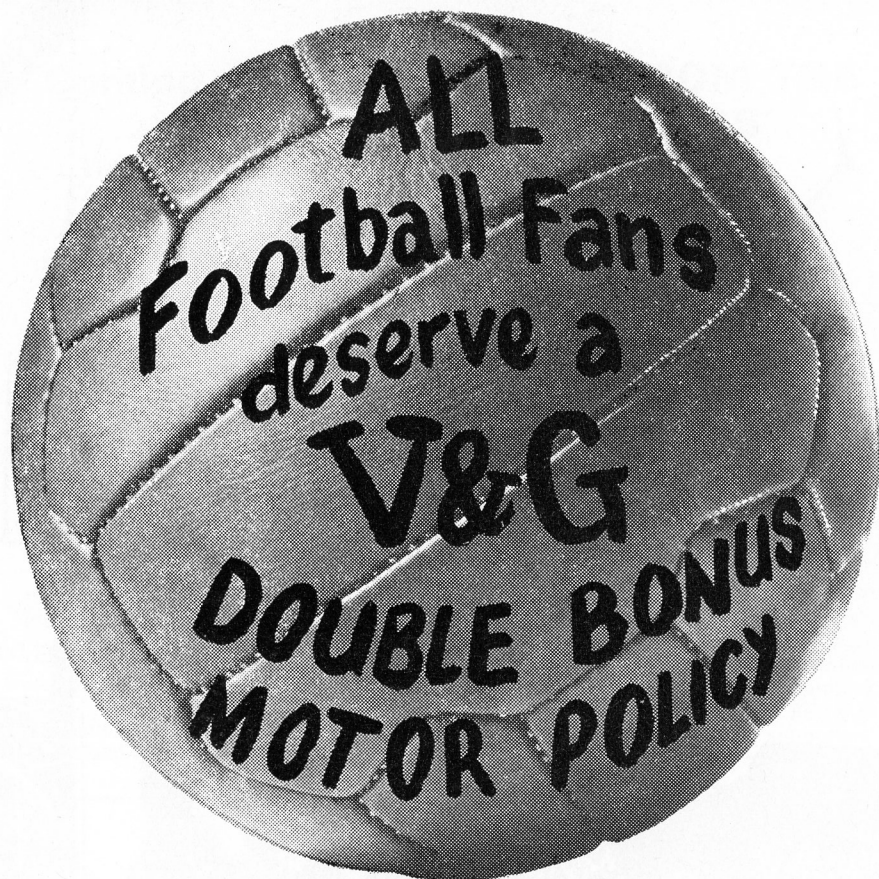
BONANZA WINNERS Shrewsbury Match

- 1st prize 2385, Mr Ross, 9 Westhill Road, Luton. £20.
- 2nd prize 2396, Mr N. Bailey, 450 New Bedford Road, Luton. Goali Transistor radio.
- 3rd prize 2587, Mr Clarke, 22 Broughton Avenue, Luton. Goali Transistor radio.
- 4th prize 6540, Mr Nixon, 29 Naughton Crescent, Baldock. Odeon cinema ticket.
- 5th prize 2728, Odeon cinema ticket, not claimed.



Alan Slough jumps with delight after scoring the equaliser against Shrewsbury Town. Congratulating him is Malcolm Macdonald while a Shrewsbury defender kicks the ball away in disgust.

Picture by courtesy of the 'Evening Post'.



**THE V&G
DOUBLE BONUS
MOTOR INSURANCE POLICY
GIVES FAIRER TERMS
TO EVERY DRIVER**

For further information contact your local officially appointed V & G Insurance Broker, or write or phone the address below.

V&G THE VEHICLE & GENERAL GROUP OF INSURANCE COMPANIES

Group Headquarters,
Administration & Operations;
Bushey House,
High Street, Bushey,
Hertfordshire.
Tel: 01-950 4311.

THE VEHICLE & GENERAL INSURANCE CO. LTD.
LIFE, CASUALTY & GENERAL INSURANCE CO. LTD.
AUTOMOBILE & GENERAL INSURANCE CO. LTD.
THE GENERAL & COMMERCIAL MOTOR INSURANCE CO. LTD.
METROPOLITAN GENERAL INSURANCE CO. LTD.
WORLD AUXILIARY INSURANCE CORPORATION LTD.
PIONEER LIFE ASSURANCE CO. LTD.

	APPEARANCES			GOALS		
	FL	FLC	FC	FL	FLC	FC
<i>Goalkeepers</i>						
DAVIE, A.	5	2	3	—	—	—
READ, A.	6	3	3	—	—	—
STARLING, A.	—	—	2	—	—	—
<i>Full Backs</i>						
BANNISTER, J.	11	5	—	—	—	—
DOUGAN, M.	6	3	3	—	—	1
HOOPER, G.	—	—	5	—	—	—
JARDINE, F.	1	—	7	—	—	—
RYAN, J.	5	2	5	—	—	—
<i>Half Backs</i>						
BRANSTON, T.	3	5	3	—	1	—
KEEN, M.	11	5	—	1	—	—
GUILD, A.	—	—	7	—	—	1
MOORE, J.	2	1	6	—	—	—
NICHOLL, C.	7	—	—	1	—	—
SLOUGH, A.	10	5	—	1	—	—
THOMPSON, P.	—	—	—	—	—	—
WAINWRIGHT, R.	—	—	6	—	—	—
WADE, K.	—	—	—	—	—	—
<i>Forwards</i>						
ALLEN, K.	11	5	—	3	2	—
COLLINS, J.	11	3	—	5	—	—
FRENCH, G.	11	5	—	3	—	—
HARRISON, M.	—	—	7	—	—	—
LEWIS, B.	4	2	3	—	2	1
MACDONALD, M.	11	5	—	6	2	—
PHILLIPS, P.	—	—	9	—	—	5
SHEFFIELD, L.	4	5	5	—	2	4
STEVENSON, M.	—	—	5	—	—	2
TEES, M.	7	1	—	5	—	—
SPARKES, N.	—	—	2	—	—	—
HINES, V.	—	—	—	—	—	—
ADAIR, K.	—	—	—	—	—	—
LEE, R.	—	—	3	—	—	—
HIPWELL, R.	—	—	1	—	—	—
FOSSEY, P.	—	—	3	—	—	—
SORBIE, R.	—	—	2	—	—	—
OPPONENT	—	—	—	1	—	—

FL – Football League; FLC – Football League Cup; FC – Football Combination

LATEST RESULTS

FOOTBALL COMBINATION

Luton Town 2 Swindon Town 0
 Read; Ryan, Jardine; Wainwright, Branston, Moore; P. Fossey, Phillips, Sheffield, Lewis, Harrison. Substitute: R. Lee.
 Scorer: Phillips (2).

Crystal Palace 2 Luton Town 1
 Read; Ryan, Hooper; Guild, Branston, Moore; P. Fossey, Phillips, Sheffield, Wainwright (Hipwell), Harrison.
 Scorer: Phillips.

DIVISION III

Luton Town 2 Shrewsbury Town 2
 Davie; Dougan, Bannister; Keen, Nicholl, Slough; Collins, Macdonald, Tees, Allen, French. Substitute: Sheffield.
 Scorers: Collins, Slough.

Plymouth Argyle 1 Luton Town 3
 Davie; Dougan, Bannister; Keen, Nicholl, Slough; Collins, Macdonald, Tees, Allen, French. Substitute: Guild.
 Scorers: Tees (2), French.

Walsall 1 Luton Town 3
 Davie; Dougan (Jardine), Bannister; Keen, Nicholl, Slough; Collins, Macdonald, Tees, Allen, French.
 Scorers: Tees (2), Collins.

FOOTBALL LEAGUE CUP

Sheffield United 3 Luton Town 0
 Davie; Dougan, Bannister; Keen, Branston, Slough; Collins, Macdonald, Tees (Sheffield), Allen, French.

SOUTH-EAST COUNTIES LEAGUE
Q.P.R. 2 Luton Town 1
 Taylor; Hooper, Hipwell; Thompson, Sage, Tuffs; Wade, Surridge, Sparkes, Sorbie, Olive. Substitute: Adair.
 Scorer: Tuffs.

Watford 0 Luton Town 1
 Dalrymple; Hooper, Sage; Hipwell, Thompson, Wade, Tuffs, Sparkes, Garfield, Hines, Adair. Substitute: Sorbie.
 Scorers: Sparkes.

Tony Pullein continued

John Price has rarely been out of the side since his arrival from Burnley in 1965. Doug Griffiths didn't get into Wolves' League team, but got his chance after signing for Stockport last season.

Their last visit
 Stockport's last trip to Kenilworth Road was on 25 April last:

Luton (2) 4 Stockport (0) 1
 Lewis (3), Rioch Young (pen)
 12,055

Luton: Read; Dougan, Bannister; Keen, Slough, Moore; French, Lewis, Buxton, Allen, Rioch.

Stockport: Ogley; Griffiths, Hartle; Kin-sella, Milner, Campbell; Price, Goodwin, Young, Harley, Mulholland.

Our League record against Stockport is:

	P	W	D	L	For	Ag	Pts
Home	4	3	0	1	12	8	6
Away	4	0	0	4	2	9	0
	8	3	0	5	14	17	6

HALF TIME SCORES

FIRST LIST

A	Arsenal	0..	Coventry C.	1..
B	Crystal P.	0..	Newcastle	0..
C	Derby C.	0..	Man. Utd.	0..
D	Ipswich T.	0..	Sheff. Wed.	0..
E	Leeds Utd.	0..	Stoke City	0..
F	Liverpool	0..	Notts F.	0..
G	Man. City	0..	Albion	0..
H	Soton	0..	Tottenham	0..
K	Sunderland	0..	Chelsea	0..
L	West Ham	0..	Burnley	0..
M	Wolves	0..	Everton	0..
N	Aston Villa	0..	Preston	0..

SECOND LIST

A	Blackburn	3.	Norwich C.	1.
B	Blackpool	0..	Cardiff C.	0..
C	Bolton W.	0..	Swindon T.	0..
D	Bristol C.	0..	Birmingham	0..
E	Carlisle U.	0..	Hudd'fld T.	0..
F	Charlton A.	0..	Portsmouth	0..
G	Leicester C.	0..	Watford	0..
H	Oxford Utd.	0..	Millwall	0..
K	Q.P.R.	0..	Middlesbro	0..
L	Sheff. Utd.	0..	Hull City	0..
M	Barnsley	0..	Barrow	0..
N	Brighton	0..	Bristol R.	0..

THIRD LIST

A	Fulham	0.	Doncaster	1.
B	Halifax T.	0..	Bury	0..
C	Mansfield	0..	Plymouth	0..
D	Reading	0..	Walsall	0..
E	Rochdale	0..	Shrewsbury	0..
F	Rotherham	0..	Bradford C.	0..
G	Southport	0..	Bourn'th	0..
H	Torquay U.	3.	Gillingham	0.
K	Tranmere R.	0..	Orient	0..
L	Bradford	0..	North'ton	0..
M	Crewe A.	0..	Grimsby T.	0..
N	Darlington	0..	Chester	0..

We're top of the league!

Team effort.

That's what makes Skefko the leading manufacturer of rolling bearings in the country. We're working together to make even better bearings. Faster. Cheaper. And always on time.

What's in it for us? A good secure job for a start. And good benefits and promotion prospects too. Take it from us - Skefko's a great company to team up with.



SKF

THE SKEFKO BALL BEARING CO., LTD. LUTON, BEDFORDSHIRE

THIS WEEK'S BALL DONOR: AN ANONYMOUS FRIEND

LUTON TOWN

Colours: Shirts White
Shorts Black

Coach: JIMMY ANDREWS

	1	
	Sandy Davie	
2		3
Freddie Jardine		Jack Bannister
4	5	6
Mike Keen <i>Captain</i>	Chris Nicholl	Alan Slough
7	9	11
John Collins	Matt Tees	Graham French
8		10
Malcolm Macdonald		Keith Allen

Sub:

LAURIE SHEFFIELD

Referee
T. H. C. REYNOLDS
(Swansea)

Linesmen
J. A. FINN (*Chigwell Row*)
Red flag
H. B. WORMAN (*Redditch*)
Yellow flag

Sub:

DOUG GRIFFITHS

	10		8
	Jim Mulholland		Freddie Goodwin
11		9	7
Barry Hartle		John Rowlands	John Price
6		5	4
Gordon Low		Danny Campbell	Doug Griffiths
3			2
John Chapman			Billy Haydock
	1		
	Alan Ogley		

Colours: Shirts Tangerine
Shorts Tangerine

Manager: WALTER GALBRAITH

STOCKPORT COUNTY

Result: LUTON TOWN 2

STOCKPORT COUNTY 0