



LUTON TOWN

FOOTBALL CLUB

Telephone: Luton 23151



DIVISION III

v TORQUAY UTD

Saturday 25th October 1969 Kick-off: 3 p m

Official Programme: Price 1/-

FIXTURES 1969-70



LUTON TOWN FOOTBALL AND ATHLETIC CO, LTD

KENILWORTH ROAD, LUTON, BEDFORDSHIRE
TELEPHONE 0582 23151

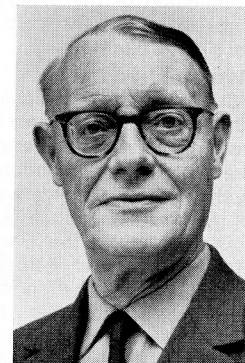
Established 1885 Incorporated 1897
First Professional Side Season 1891-1892
Football League Division III Champions 1936-37
Football League Division II Runners-up 1954-55
FA Challenge Cup Finalists 1958-59
Football League Division IV Champions 1967-68

Directors: A. T. HUNT, *Chairman*, L. S. HAWKINS, *Vice-Chairman*,
J. A. C. BAIN, R. I. BURR, T. HODGSON, H. RICHARDSON
Chief Executive and Manager: Alec Stock Secretary: R. Readhead
Hon. Medical Officers: Dr. C. J. Buckingham, M.B., B.S. and
Dr. P. J. Burrows, M.B., B.Ch., D.Obst., R.C.O.G.
Hon. Dental Surgeon: A. Hargreaves, Esq.
Hon. Solicitor: E. Waller, Esq. Auditors: Messrs Keens, Shay, Keens & Co.

OFFICIAL PROGRAMME 25 OCTOBER 1969

New Series
Vol 1. No 12.

Eric Pugh's Page



When the time comes to look back on this season, it may be that last Saturday's victory at Brighton will emerge as one of the most important achieved by the Town.

There were some who had begun to feel that the team was flagging a little after the goalless home draw with Bournemouth which was followed immediately by the first League defeat at Doncaster.

However, the players gave a sharp answer to those who had begun to forecast that the downward trend had begun by taking both points from Brighton's Goldstone ground, a feat which few clubs are likely to emulate.

Freddie Jardine and it is a strange circumstance that most of the injuries that have been collected so far have affected the full-back positions.

Not so serious

Fortunately, the mishap to Jardine has turned out not to be so serious as was feared at first, but at the times these notes were written, there was considerable doubt about him being able to turn out today.

At the same time, it is good to hear that Max Dougan, who has been out since damaging a knee at Walsall nearly a month ago, is making substantial progress and should be in line for a return soon

Fillip to bright hopes

Afterwards, Manager Alec Stock described the Sussex team as the best met by the Town this season and that such a professional performance was achieved was a distinct fillip to the bright hopes that are being cherished that promotion will be achieved this season.

Once again, there had to be some re-shuffling of the side consequent on an injury being received, this time by

FOOTBALL COMBINATION

Date	Opponents	Attendance	Result
August			
Sat 16	PETERBORO'	1,326 (H)	4-2
Sat 23	Norwich City	(A)	0-0
Sat 30	TOTTENHAM H.	1,683 (H)	2-2
September			
Sat 6	Gillingham	(A)	2-3
Sat 13	BOURNEMOUTH	1,124 (H)	3-3
Tues 23	Northampton Town	(A)	1-5
Sat 27	SWINDON T.	1,306 (H)	2-0
October			
Wed 1	Crystal Palace	(A)	1-2
Sat 11	BIRMINGHAM	1,309 (H)	1-2
Sat 25	Tottenham H. (Cup)	(A)	
November			
Sat 1	SOUTHAMPTON	(H)	
Tues 4	Queens Park Rangers	(A)	
Sat 8	Leicester City	(A)	
Tues 18	WALSALL (Cup)	(H)	
Sat 22			
Sat 29	LEICESTER (Cup)	(H)	
December			
Tues 2	Walsall	(A)	
Sat 6	IPSWICH T.	(H)	
Sat 13	Bristol Rovers	(A)	
Tues 16	BIRMINGHAM (Cup)	(H)	
Sat 20	Arsenal	(A)	
Sat 27	Northampton (Cup)	(A)	
Tues 30	Walsall (Cup)	(A)	

1970

Date	Opponents	Attendance	Result
January			
Sat 10	CHELSEA	(H)	
Sat 17	Plymouth Argyle	(A)	
Tues 20	TOTTENHAM (Cup)	(H)	
Sat 24	READING	(H)	
Tues 27	Birmingham (Cup)	(A)	
Sat 31	NORTHAMPTON (Cup)	(H)	
February			
Wed 4	Leicester City (Cup)	(A)	
Sat 7			
Sat 14	Fulham	(A)	
Sat 21	SWANSEA T.	(H)	
Wed 25	Cardiff City	(A)	
Sat 28			
March			
Sat 7	OXFORD UNITED	(H)	
Sat 14			
Sat 21	West Ham United	(A)	
April			
Sat 4	BRISTOL C.	(H)	

©Football League Ltd, 1969

Published by
Luton Town Football and Athletic Company Limited,
Kenilworth Road, Luton.

Printed by
White Crescent Press Limited, Crescent Road, Luton.
Telephone Luton 23122

DIVISION THREE

Date	Opponents	Attendance	Result
August			
Sat 9	BARROW	12,080 (H)	3-0
Wed 13	FLC1 Peterboro'	10,249 (A)	1-1
Sat 16	Bournemouth	9,735 (A)	1-0
Tues 19	FLC1 PETERBORO'	13,105 (H)	5-2
Sat 23	ORIENT	13,761 (H)	3-2
Tues 26	HALIFAX T.	13,759 (H)	1-1
Sat 30	Gillingham	7,792 (A)	2-0
September			
Tues 2	FLC2 MILLWALL	17,372 (H)	2-2
Sat 6	BRISTOL R.	15,198 (H)	4-0
Mon 8	FLC2 Millwall	14,125 (A)	1-0
Sat 13	Bradford City	10,851 (A)	1-1
Tues 16	Southport	4,003 (A)	3-0
Sat 20	SHREWSBURY	15,396 (H)	2-2
Tues 23	FLC3 Sheffield U.	16,884 (A)	0-3
Sat 27	Plymouth Argyle	14,111 (A)	3-1
Tues 30	Walsall	7,557 (A)	3-1
October			
Sat 4	STOCKPORT	15,944 (H)	2-0
Tues 7	BOURNEMOUTH	18,065 (H)	0-0
Sat 11	Doncaster Rovers	17,380 (A)	0-2
Tues 14	Friendly ASTON V.	10,187 (H)	0-3
Sat 18	Brighton & H.A.	18,722 (A)	2-1
Sat 25	TORQUAY U.	(H)	
November			
Sat 1	Rotherham U.	(A)	
Sat 8	BARNSELY	(H)	
Sat 15	FA Cup 1		
Sat 22	ROCHDALE	(H)	
Tues 25	FULHAM	(H)	
Sat 29	Mansfield Town	(A)	
December			
Sat 6	FA Cup 2		
Sat 13	BRADFORD C.	(H)	
Sat 20	Bristol Rovers	(A)	
Fri 26	Orient	(A)	
Sat 27	GILLINGHAM	(H)	
1970			
January			
Sat 3	WALSALL (3)	(H)	
Sat 10	Shrewsbury Town	(A)	
Sat 17	PLYMOUTH A.	(H)	
Sat 24	Bury (4)	(A)	
Sat 31	Stockport County	(A)	
February			
Sat 7	DONCASTER (5)	(H)	
Sat 14	Barrow	(A)	
Sat 21	Torquay United (6)	(A)	
Sat 28	BRIGHTON	(H)	
March			
Tues 3	TRANMERE R.	(H)	
Sat 7	Rochdale	(A)	
Wed 11	Reading	(A)	
Sat 14	MANSFIELD (SF)	(H)	
Tues 17	BURY	(H)	
Sat 21	Tranmere Rovers	(A)	
Fri 27	ROTHERHAM U.	(H)	
Sat 28	READING	(H)	
Mon 30			
Tues 31	Barnsley	(A)	
April			
Sat 4	Halifax Town	(A)	
Wed 8	Fulham	(A)	
Sat 11	FA Cup Final		
Tues 14	SOUTHPORT	(H)	

Gruelling start

By and large, the Town can be reasonably satisfied with the way in which they have come through a gruelling start to the season without their playing resources becoming overstrained.

Such has been the pile-up of fixtures, consequent on the success achieved in the League Cup in which they had five matches, that there could have been the danger of serious weakening.

However, that particular rush is over and the club have just come through their first clear week, so far as competitive mid-week matches are concerned, for some time.

FC Cup looms near

Nor will there be any more until a month on Tuesday, unless a replay is necessary of their first round match in the FA Cup which is due to be played three weeks today.

Identity of their opponents will not be known until Monday week, after the completion of the qualifying competition but, obviously, the club will be hoping for a home pairing.

Average boosted?

With success continuing, support is running at what can only be described as a very reasonable level and the indications are that today's attendance for the clash with Torquay United, will be the means of giving the average figure a boost.

Not often are the whole of the centre stand seats sold before a match, but such has been the demand for this one that that seemed a likely happening and is usually a pointer to a big attendance.

This is the first time Allan Brown has been back here with his Torquay team, who, like the Town, have made a bright start and are numbered among the promotion contenders.

Slumped at home

Unfortunately for them, they slumped at home last Saturday to Halifax Town, who snatched the only goal, but the Town have first-hand evidence of the difficulty of beating the Yorkshire side who, despite the loss of Chris Nicholl, still seem to be strong at the back of their defence.

There is more Yorkshire opposition for the Town in the next fortnight. Next Saturday, they travel to meet Rotherham United at Millmoor, a ground on which they secured a point after a hard battle last season.

Not reached potential

So far, Rotherham have not reached their true potential and, at the moment, are in the lower reaches of the Third Division, but they are not easy to beat on their own ground and they have some excellent feats in the League Cup to their credit.

Once again, the Town will take a strong following, the majority of it by another specially chartered train. This mode of travel has certainly caught on with the fans and the Town club have pointed the way to others about how to run this sort of thing without trouble.

Strong force of stewards

Trips to Sheffield, Plymouth, Doncaster and Brighton have been completed entirely without trouble and the success is attributed, not only to a certain selectivity in the sale of tickets which the club have undertaken themselves from their new Sports Centre, but to the careful stewarding of the trains.

On each occasion, a strong force of volunteer stewards, in addition to railway police, has travelled on the trains and they have had the fullest co-operation from the supporters.

Train to Rotherham

Another train, holding over 400, is booked for Rotherham and details of timings will be found on another page in this programme.

A fortnight today, the Town will stage here what could well turn out to be one of the best matches of the season when Barnsley are the visitors.

This morning, they stood second in the table with the Town and their fortunes have improved so much during the last two years that they are another club who have ideas about figuring in the Second Division next season.

Stirring struggle

On the face of things, this will be a stirring struggle, and tussles between them and the Town have the habit of turning out to be attractive affairs.

This has been a quiet month for the Reserves who, however, will be busier

continued on page 11

OUR COVER PICTURE

Graham French, who was in brilliant form at Brighton last Saturday, embarks on one of his intricate runs that so baffled the home defence.

(By courtesy of Home Counties Newspapers Ltd.)

CONNELLS

Auctioneers, Surveyors
Valuers and Estate Agents

5, Upper George Street, Luton

Telephone: 31261 for

Houses and Bungalows

COUNTRY HOUSES, COMMERCIAL AND
INDUSTRIAL PREMISES, COMPULSORY
PURCHASE NEGOTIATIONS IN

Luton and Surrounding Districts

Branch Offices throughout

HERTFORDSHIRE, BEDFORDSHIRE, BUCKINGHAMSHIRE
and at 62, GROSVENOR STREET, LONDON, W.1.



THE ONE STOP SHOPPING CENTRE for

Hardware, Electrical, Men's Wear, Fuel, Catering,
Footwear, Bookshop, Drapery, Furnishing, Toys &
Sports, Grocery, Greenfruit and Butchery with Credit
Facilities to suit your requirements.

PLUS DIVIDEND STAMPS

SUPERSTORE

4 NEW BEDFORD ROAD

LUTON. Tel: 21171



LUTON CO-OPERATIVE SOCIETY LTD

From Bob's Office



Bob Readhead, Secretary

In a bookmaker's list for the Watney's football competition that is to be held before the start of next season, we are quoted as second favourites at 4-1, behind Fulham (3-1) and in front of today's visitors, Torquay United (8-1).

This is the new tournament which is to be run for the two highest scoring teams in each of the four divisions, but it is one in which we do not want to succeed.

Reason for this is obvious to those who have studied the rules of the competition because the teams winning promotion are not eligible for consideration.

Spreading the honours

This is so that the honours can be spread more widely and incentive given to more teams. At the same time, participation in the tournament with the sure reward of £4,000 and more to come through the turnstiles, is some consolation for failure of which, however, we do not propose to have any part.

Will supporters please note that programmes will now be mostly sold outside the ground and we are endeavouring to cover all queues so that everyone has the opportunity to purchase their copy as they go in.

FA cup looms near

By the time the next home match comes along, with Barnsley a fortnight today, the draw for the first round of the FA cup will have been made.

If it is a home game, reserved tickets will be available at 10s each and season ticket-holders can make certain of occupying their own seats by making application, either in person or through the post and enclosing Match number three slip.

Vauxhall here on Monday

There are two matches on this ground next week. On Monday, Vauxhall Motors and Letchworth Town will make their fourth attempt to see who qualifies to visit Arlesey Town in the third qualifying round of the Amateur Cup.

Their third meeting last Tuesday was abandoned a minute from the end of

normal time because of fog, with the score standing at 1-1.

Youth Cup clash

Then, on Wednesday, we meet Ely Crusaders in the FA Youth Cup. In the draw, we came out second, but Ely asked us to transfer the game to our ground and this we were only too happy to do. Kick-off for both matches is at 7.30 p.m.

Today's match is being filmed by London Weekend TV and will figure as the 'Big Match' tomorrow afternoon.

On the face of things, with so much at stake, it should be well worth seeing. We welcome back to Luton Allan Brown who served this club both as player and manager and was a member of our 1959 Cup Final side.

In the current issue of the *Football League Review*, there is a special article on Luton Town FC illustrated with colour pictures.

BONANZA WINNERS SET 9 (ORANGE)

1st prize 0557, Mr Wray, Peters Green, Luton. £6 10s.

2nd prize 1535, Mr Pedder, 28 Beaconsfield Road, Luton. Radio.

3rd prize 0568, Mr Brown, 7 Preston Road, Toddington. Radio.

4th prize 1956, Mr Brown, 10 Chalton Road, Luton. Cinema tickets.

5th prize 0223, Unclaimed. Cinema Tickets.

The Vauxhall Breed's got style.





TORQUAY UNITED

Back row (left to right): John Benson, Micky Cave, Andy Donnelly, Alan Welsh, Alan Smith.

Middle row: Allan Young, Brian Faulkes, Fred Binney, Tony Scott, Bill Kitchener.

Front row: George Potter, Eric Welsh, Tommy Mitchinson, Ken Sandercock, Jimmy Dunne, John Rudge.

Picture by courtesy of *Herald Express, Torquay.* (The Western Times Co, Ltd)

A clash between aspirants for promotion *By Tony Pullein*

Luton and Torquay for promotion? Many experts are tipping these sides to share this prize, which should make it quite an intriguing clash this afternoon.

Torquay, managed by former Luton boss, Allan Brown, have been acclaimed one of the best footballing sides in the division.

They've netted twenty-nine times in League games, their most consistent marksman being John Rudge who already has nine in League games – as many as he's ever bagged in a complete season before – and one more in the League Cup.

John entered League soccer with Huddersfield in 1962–63, switching to Carlisle in 1966. He moved to Torquay last January.

Binney on the mark

Three other players have also been scoring regularly. Fred Binney, who rose through the junior sides to make the League grade two seasons back and had never scored in a League game until this season, has seven to his credit.

So, too, has Northern Ireland international Eric Welsh. Eric first burst onto the League scene with local rivals Exeter City. He moved to Carlisle in 1965 – it was while there that he won his three international caps – and he topped their scorers in 1966–67. Torquay signed him in June.

Another marksman

Micky Cave, six goals so far, was discovered with Southern League Weymouth, linked with Torquay in July 1968 and went almost straight into the first team.

Working well in mid-field is Tommy Mitchinson, who made his way down to the West Country in easy stages – he left Sunderland, his first League club, for Mansfield, then played for Aston Villa before arriving this summer.

And we may see young George Potter, who spent last season with us at Kenilworth Road, furthering his League experience in the middle line.

Scott could be back

Tony Scott, the former West Ham and Villa winger, could be back in the attack today. And John Benson, who has proved himself in several positions, may be plugging a gap anywhere around the team.

John, who played First Division football for Manchester City, made his 200th League appearance for Torquay this season.

Goalkeeper, Andy Donnelly, United's regular for the past couple of seasons, made his way to Plainmoor via Clyde and Millwall and even spent a period out

of the League with Weymouth.

Two former West Ham players are prominent in defence – Bill Kitchener, now in his fourth season with the club, and Bob Glozier who signed for a trial period in August but who has now been given a permanent contract.

Two Irish stars

Irish youth international Jimmy Dunne joined Torquay from Millwall in 1967, winning a regular place last season. Another Irishman, Cecil Smyth, moved across from neighbouring Exeter City in August. Cecil made almost 300 League appearances for Exeter since arriving from Distillery in 1962.

Ken Sandercock, a Plymouth lad went into the first team shortly after signing professional forms in January. Brian Joy signed for Blackburn as an amateur last season but, when they didn't follow up their interest, he applied to Torquay for a trial and was offered a professional contract in August.

Have lost 11 out of 12 here

Torquay have lost 11 of their 12 League games at Kenilworth Road, their only win being as long ago as April 1929. Our League record against them is:

	P	W	D	L	For	Ag	Pts
Home	12	11	0	1	40	11	22
Away	12	3	5	4	19	33	11
	24	14	5	5	59	33	33

Last season's game was settled by a goal just after the interval:

Luton (0) 1 Torquay (0) 0

Lewis 14,936

Luton: Read; Dougan, Jardine; Slough (Allen), Branston, McDerment; French, Lewis, Sheffield, Rioch, Harrison.

Torquay: Donnelly; Bond (Mathews), Kitchener; Smith, Brown, Dunn; Barnes, Benson, Rowlands, Stubbs, Scott.

Luton's leading newsagents

HOUGHTONS

CONFECTIONERS · TOBACCONISTS
GREETINGS CARD SPECIALISTS

- ★ 16 The Parade, Hill Rise
- ★ 3 Ashwell Parade, Sundon Park
- ★ 82 Putteridge Road, Stopsley
- ★ 253 Birdsfoot Lane
- ★ 150 Sundon Park Road
- ★ Jansel House, Stopsley
- ★ 217 Dunstable Road
- ★ 8 Hillborough Crescent, Houghton Regis

Whenever you are near – pay us a visit
We will be pleased to serve you

buy your
EVENING **POST**
with full-time
results outside
the ground
after the match



RICHARDSON and BOTTOMS

LIMITED

*Builders
and
Contractors*

107, BISCOT RD.

Luton

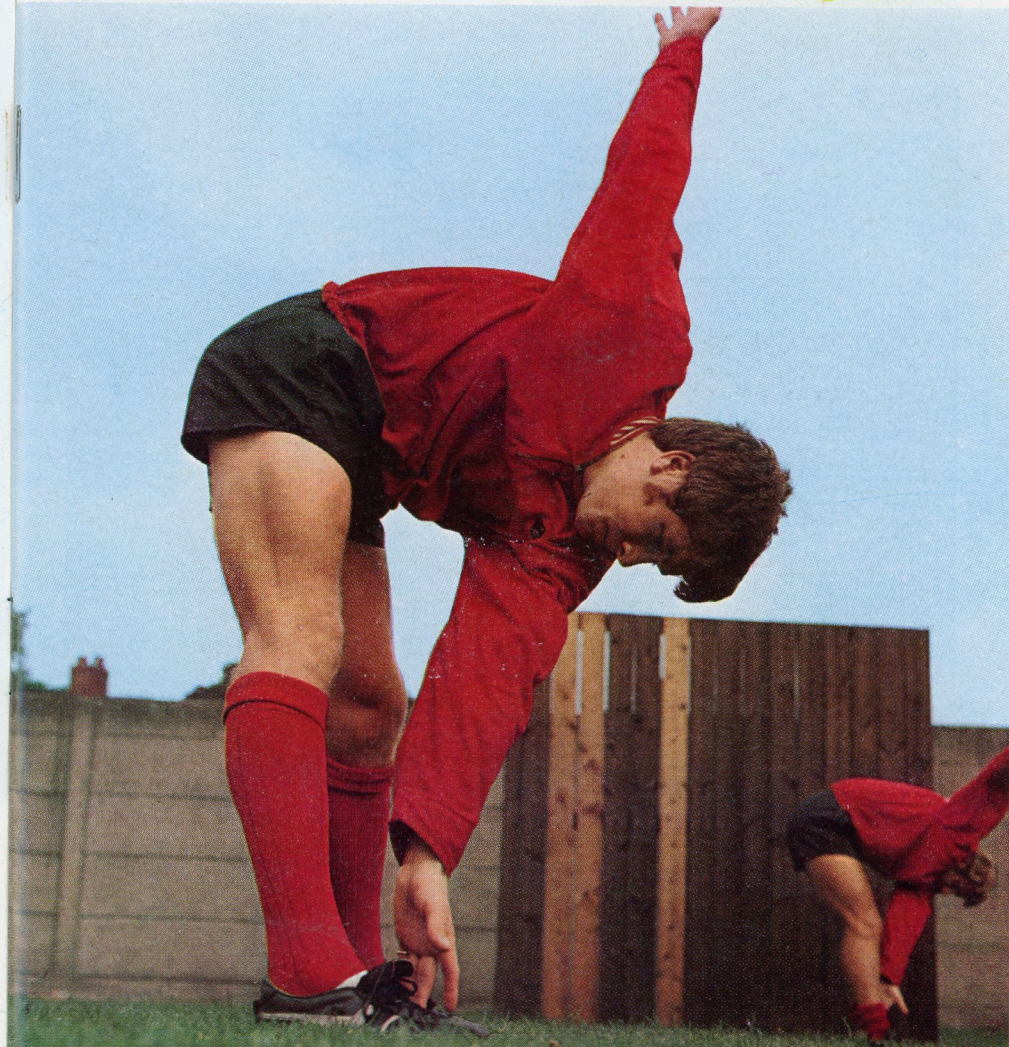
Telephone : 25628

Football League Review



ONE SHILLING

THE OFFICIAL JOURNAL OF THE FOOTBALL LEAGUE



No flannel- All Flavour



Round here
that's what Park Drive
means to us
Park Drive Flavour

LATEST RESULTS

FRIENDLY MATCH

Luton Town 0 Aston Villa 3

Davie (Read); Ryan, Jardine; Keen, Branston, Guild; Collins (Stevenson), Phillips, Tees, Allen, Macdonald.

DIVISION III

Brighton 1 Luton Town 2

Davie; Jardine (Phillips), Bannister; Keen, Nicholl, Slough; Collins, Macdonald, Tees, Allen, French. Scorer: Collins (2).

SOUTHERN JUNIOR FLOODLIGHT CUP

Coventry City 3 Luton 0

Dalrymple; Hooper, Sage; Hipwell, Thompson, Tufts; Sparkes, Sorbie, Weedon, Hines, Adair. Substitute: Garforth.

Eric Pugh continued from page 4

during November when they have five matches scheduled, including two at home in the Combination Cup.

Friendly match on Tuesday

However, the second string players have not been exactly idle, because a couple of friendly matches this week have kept them match fit and there is another next Tuesday.

Then, the Town will be sending a strongish team to Bishops Stortford, the Athenian League club from which they signed Peter Phillips, the former England Amateur International.

Phillips, who has settled in well since he joined the professional ranks, had his first sample of League football at Brighton when he came on for the injured Jardine and he could well have celebrated his debut with a goal or two.

Nothing tangible

Meanwhile, talk about possible departures from Kenilworth Road have not amounted to anything tangible, but Manager Alec Stock is willing to release two, perhaps three players if the right offers come along.

So far, all he has had of a concrete nature are requests for players on loan, but he points out that this is not the object of the exercise.

Rather, he is out for some readjustment of his forces and intends to reinvest such money as he is able to accumulate in the market in a new player, or players.

PERSONALITY PROFILE



11 KEITH ALLEN

One of the most consistent players on the books who rarely turns on even an indifferent performance.

Has been used with good effect as both striker and midfielder and it is in the latter role that he has been of such great value to the team in their highly successful run this season.

Strong in the air, he has scored some vital goals this season and never neglects the chance to come through and have a shot.

Was born in the Isle of Wight, began his career with Portsmouth and arrived at Stockport County after a spell with Grimsby Town.

It was from the Cheshire club that he joined the Town for Derek Kevan and a fee of £2,000 which left the Town with much the better of the bargain.





Eat and Drink in real comfort at Hatters' Club

Eat and drink in comfort! That is the axiom of the new Hatters' Club which is rapidly gaining a reputation for luxury and good service.

Here is a picture of it at the start of a typical evening, giving some idea of the facilities that are available to members.

Membership, of course is automatic to holders of season tickets and to those who are not, an annual subscription of £2 (or £3 for husband and wife) is necessary.

Demand will grow

More and more, the Club is being hired for

private functions, such as dinners, dances and parties and it is expected that the demand will grow even greater as the Winter sets in.

On Saturday match days, the Club is open from 12 noon to 2.55 p.m., from 4.45 to 5.30 and from 6 o'clock to 11.30.

Meals before the match

Hot meals and snacks are available and many supporters are taking the opportunity to eat here before the match.

On Saturday evenings, there is a band for dancing and, more often than not, a cabaret thrown in for good measure.

Police praise our travelling fans

By Harry Haslam, Entertainments Manager

Once again, there was nothing but congratulations for the way in which our trip to Brighton went last Saturday.

Two trains carried the best part of 1,000 supporters without the slightest untoward incident and we were complimented, once more, by the railway staffs and police both at Hove and Luton stations.

Thanks to 'Taffy'

I would like to express special thanks to 'Taffy' Ellis and his happy band of stewards, who did such a great job on the trains. The arrangements they made were absolutely first-class.

Having now established this service to our supporters, we have every intention on continuing and extending it, and another chartered train holding 438 has been booked for the visit to Rotherham next Saturday.

Return fare is £1 and the timings are. Depart Luton, 10.20 a.m., arrive Rotherham 1 p.m. Depart Rotherham 5.50 p.m., arrive Luton 8.45 p.m.

Book Early

To avoid disappointment, fans should book early at the Luton Sports Centre, 231 Dunstable Road. A limited number of stand tickets at 8s each is available, but preference in selling them will be given to those booking seats on the train.

When you are reserving your tickets, have a look at what we have available for sale in the new shop.

Items include lapel badges 3s each, rosettes 2s 6d, ties 17s 6d, Teddy Bears 21s and 36s, mini football boots 9s, football transistor radios 65s, large picture albums 25s, black and white mini dresses 52s 6d (with hat) and the 4-2-4 football game, as advertised in the programme.

Pay in instalments

We have begun a method whereby you can come along and order any souvenirs or games for Christmas and pay for them in weekly instalments.

Today, we are flying for the first time on this ground, though it has already been on view at Wembley Stadium, the new flag, presented to us by Mr Albert Bryant, of the Bobbers Stand and Supporters' Club.



Return visit

This is a gift that is much appreciated by all connected with the club and it will be flying above the half-time score-board.

In the Hatters' Club, the special attraction tonight is the Yodelling Cowboy from the Lazy 'B' Ranch - a return performance by popular request. Also, there will be dancing to the Tommy Thompson orchestra.

Supporter of the week

Keith Mullard, of 6 Alexandra Square, Morden, Surrey, who has been nominated by his brother, Clive who writes, 'He travels nearly 50 miles to every home game and has been to Bournemouth, Gillingham, Plymouth and Millwall to support the team.

'So far he has not missed a home match, despite having to rush for mid-week matches. To get to Plymouth, he left home at 6 a.m. and arrived back at 1 a.m.

'I think he is a very good supporter, especially as we have Chelsea, Crystal Palace and Fulham nearby.'

Lucky mascot

Today's lucky mascot is 10-years-old Godfrey Ingram, of 62 Hadrian Avenue, Dunstable. Give him a cheer when he comes out with the players.

LUTON TOWN FC POOL

This Week's Lucky Numbers

Saturday: £20-21495; £15-40634; £5-10678; £5-32362; £2-04548; £2-39274; £1-08133.
Monday: £20-36355; £15-04179; £5-41145; £5-15058; £2-46301; £2-24388; £1-11253.
Tuesday: £20-18127; £15-33063; £5-06642; £5-44439; £2-00519; £2-14161; £1-37092.
Wednesday: £20-43479; £15-25481; £5-29241; £5-01727; £2-48153; £2-26906; £1-03925.
Thursday: £20-13580; £15-09876; £5-34219; £5-20746; £2-27981; £2-47042; £1-23109.
Friday: £20-16835; £15-30573; £5-18341; £5-05327; £2-32615; £2-13708; £1-15827.

Coming Matches

FOOTBALL COMBINATION

SATURDAY, 1st NOVEMBER

LUTON TOWN

V

SOUTHAMPTON

KICK-OFF 3 p.m.

Prices of admission

Enclosure 2s 6d (children 1s 6d) Grandstand 3s.

DIVISION III

SATURDAY, 8th NOVEMBER

LUTON TOWN

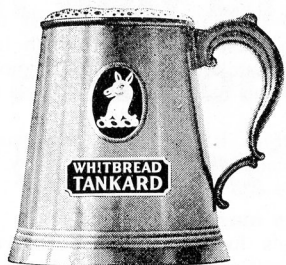
V

BARNLSLEY

KICK-OFF 3 p.m.

Prices of admission

Centre stand 10s, Wing stand 8s, Enclosure, Bobbers' Stand and Oak Road terrace 6s (children 3s), Kenilworth Road terrace 5s (children 2s 6d).



**WHITBREAD
TANKARD**
cool,
clear, refreshing

Available in all Bars

NEWS FROM THE SUPPORTERS' CLUB

By FRANK SHEPHARD

Late next month the National Federation of Supporters' Clubs is holding a meeting to discuss all aspects on hooliganism on football grounds.

Members of Supporters' Clubs throughout the country are only too willing to add their weight to any suggestion that will lead to curbing this scourge on the game.

Can control our members

We have proved that we can control our members on away journeys and it does appear that an increase in membership of various Supporters' Clubs could be the answer to the trouble.

Join us today! Membership is only 1s 2d a year, or £1 1s gives you life membership. Remember that we are the only club in Luton affiliated to the NFFSC which enables members to visit other clubs all over the country.

Win for the travel section

Our football team composed of members of the travel section beat the Newcastle Supporters' Club, London section, 5-4 the other Sunday.

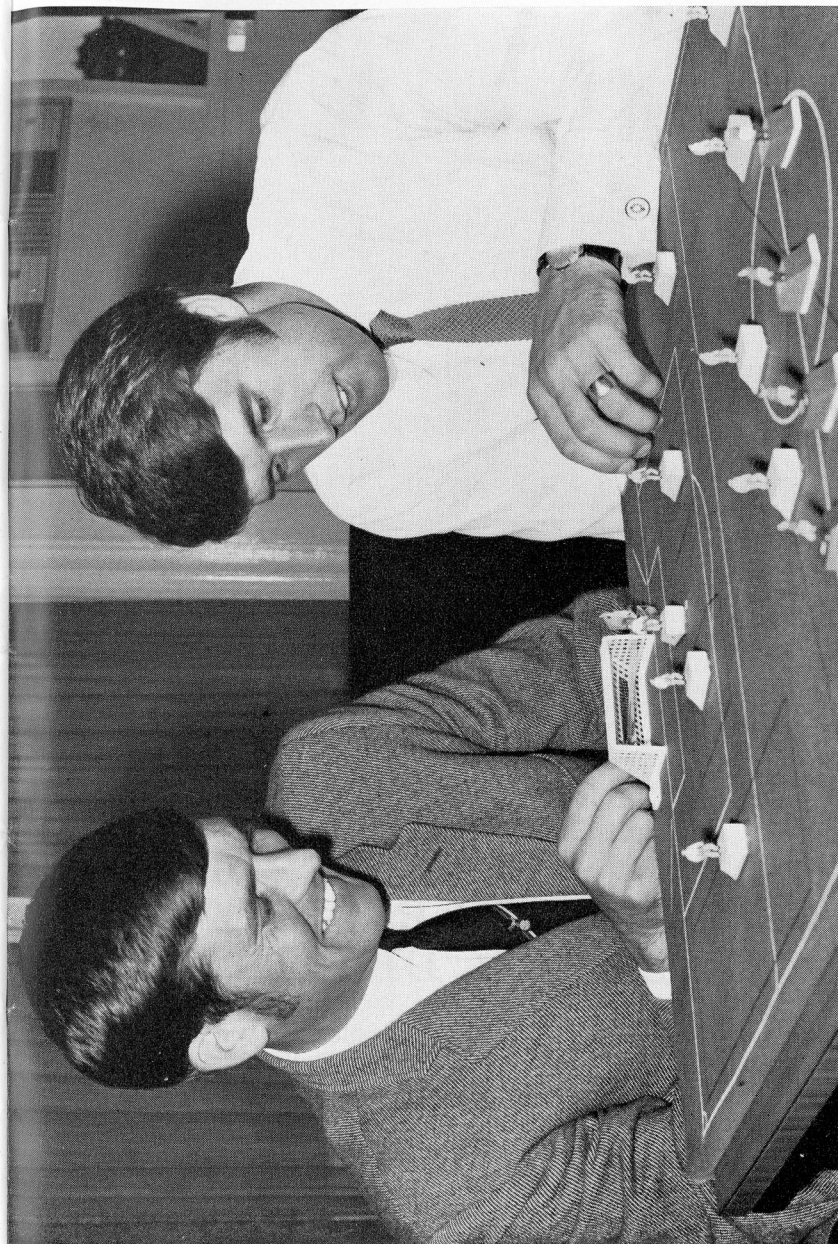
Our shops are now beginning to keep a bigger variety of items for sale, including programme binders 9s, miniature boots 9s, club ties 17s 6d, rosettes 2s 6d and badges 3s.

Today, we welcome any members of the Torquay Supporters' Club who may have made the trip and hope to welcome them at the Bobbers' Club this evening.

LEAGUE TABLE

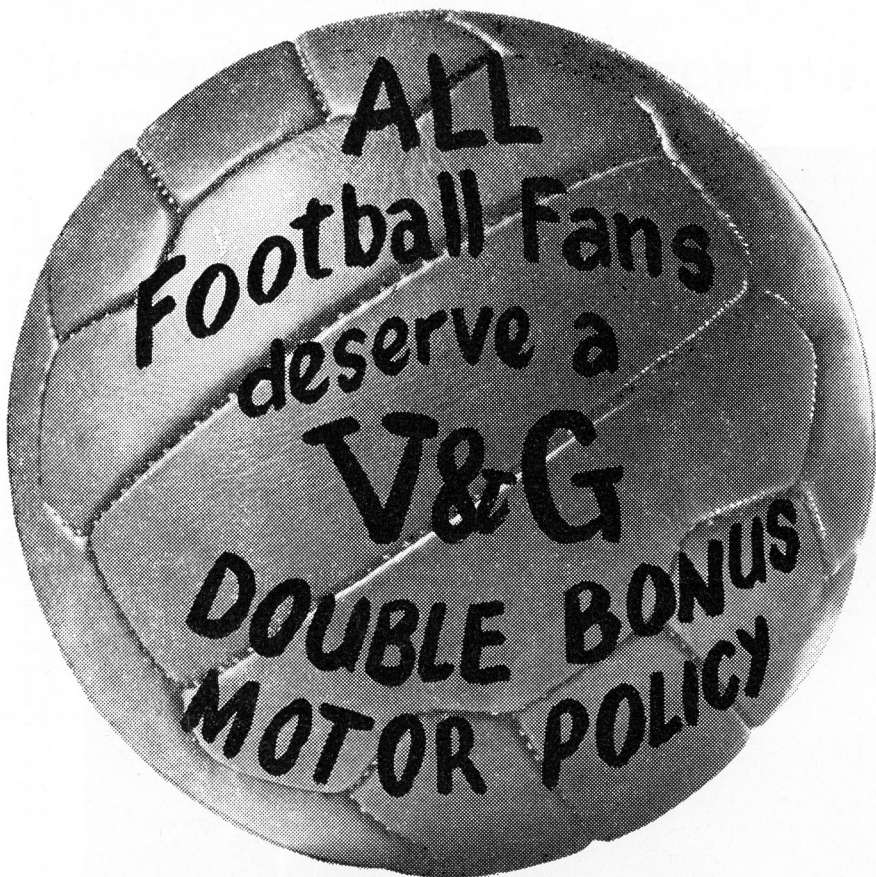
(Up to and including 18 October)

	DIVISION III											
	P	W	D	L	F	A	P					
LUTON TOWN	..	15	10	4	1	30	11	24				
Barnsley	..	15	9	4	2	24	14	22				
Torquay United	..	16	9	3	4	29	14	21				
Rochdale	..	15	9	3	3	34	20	21				
Bradford City	..	15	8	4	3	22	12	20				
Orient	..	15	7	6	2	21	12	20				
Doncaster Rovers	..	15	8	4	3	17	10	20				
Bristol Rovers	..	15	8	4	3	31	19	20				



Geoff Hurst (England & West Ham), left, playing the new 4-2-4 table football game with Brian Kinsey, of Charlton Athletic.

This game, on sale exclusively at the new Luton Sports Centre, 231 Dunstable Road, will make an ideal Christmas present for the young football supporter.
Picture by courtesy of Derek Rowe Ltd, Garlick Hill, London EC 4



**THE V&G
DOUBLE BONUS
MOTOR INSURANCE POLICY
GIVES FAIRER TERMS
TO EVERY DRIVER**

For further information contact your local officially appointed V & G Insurance Broker, or write or phone the address below.

**V&G THE VEHICLE & GENERAL
GROUP OF
INSURANCE COMPANIES**

Group Headquarters,
Administration & Operations;
Bushey House,
High Street, Bushey,
Hertfordshire.
Tel: 01-950 4311.

THE VEHICLE & GENERAL INSURANCE CO. LTD.
LIFE, CASUALTY & GENERAL INSURANCE CO. LTD.
AUTOMOBILE & GENERAL INSURANCE CO. LTD.
THE GENERAL & COMMERCIAL MOTOR INSURANCE CO. LTD.
METROPOLITAN GENERAL INSURANCE CO. LTD.
WORLD AUXILIARY INSURANCE CORPORATION LTD.
PIONEER LIFE ASSURANCE CO. LTD.

	APPEARANCES			GOALS		
	FL	FLC	FC	FL	FLC	FC
<i>Goalkeepers</i>						
DAVIE, A.	9	2	3	—	—	—
READ, A.	6	3	3	—	—	—
STARLING, A.	—	—	3	—	—	—
<i>Full Backs</i>						
BANNISTER, J.	15	5	—	—	—	—
DOUGAN, M.	6	3	3	—	—	1
HOOPER, G.	—	—	5	—	—	—
JARDINE, F.	5	—	7	—	—	—
RYAN, J.	5	2	6	—	—	—
<i>Half Backs</i>						
BRANSTON, T.	3	5	4	—	1	—
KEEN, M.	15	5	—	1	—	—
GUILD, A.	—	—	8	—	—	1
MOORE, J.	2	1	7	—	—	—
NICHOLL, C.	11	—	—	2	—	—
SLOUGH, A.	14	5	—	1	—	—
THOMPSON, P.	—	—	—	—	—	—
WAINWRIGHT, R.	—	—	7	—	—	—
WADE, K.	—	—	—	—	—	—
<i>Forwards</i>						
ALLEN, K.	15	5	—	3	2	—
COLLINS, J.	15	3	—	7	—	—
FRENCH, G.	15	5	—	3	—	—
HARRISON, M.	—	—	8	—	—	—
LEWIS, B.	4	2	4	—	2	1
MacDONALD, M.	15	5	—	7	2	—
PHILLIPS, P.	—	—	10	—	—	7
SHEFFIELD, L.	6	5	5	—	2	4
STEVENSON, M.	—	—	6	—	—	2
TEES, M.	11	1	—	5	—	—
SPARKES, N.	—	—	2	—	—	—
HINES, V.	—	—	—	—	—	—
ADAIR, K.	—	—	—	—	—	—
LEE, R.	—	—	3	—	—	—
HIPWELL, R.	—	—	2	—	—	—
FOSSEY, P.	—	—	4	—	—	—
SORBIE, R.	—	—	2	—	—	—
OPPONENT	—	—	—	1	—	—

FL – Football League; FLC – Football League Cup; FC – Football Combination

MAN IN THE MIDDLE

NATHANIEL GRAHAM (Newbiggin-by-the-Sea)

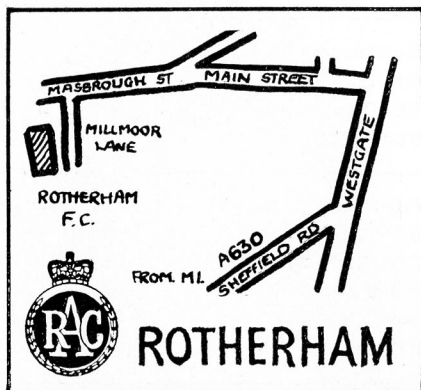
A deep interest in schoolboy football set Nathaniel Graham on the road to success as a League referee.

A headmaster by profession, Mr Graham is still very much involved in schoolboy soccer and he places as the highlight of his career the day in 1960 when he officiated at the England-Scotland schoolboy international at Wembley.

He became a Football League linesman in 1966, winning promotion to the middle last season. 'One of my greatest pleasures is when a League player comes up to me before a match and enquires: "Remember me?" Only for me to discover he was an old boy of mine,' Mr Graham says.

Mr Graham, married with two daughters, lives at Newbiggin-by-the-Sea in Northumberland.

How to get there



ROTHERHAM UNITED v LUTON TOWN

SATURDAY 1st NOVEMBER

LUTON

Leave by A505 as for Dunstable

Join M1	3 miles
Newport Pagnell Services	21 miles
Watford Gap Services	45 miles
Leicester Forest Services	68 miles
Trowell Services	95 miles
Woodhall Services	112 miles

At 5m. on, follow signs
'Leeds and Sheffield M1'
Intersection A630 122 miles
Follow signs 'Rotherham
A630'
ROTHERHAM 126 miles
(See Plan).

THIRD LIST

A Fulham	Barnsley
B Gillingham	Orient
C Halifax T	Mansfield T
D Plymouth	Walsall
E Reading	Roth. Utd
F Shrewsbury	Bradford C
G Southport	Rochdale
H Tranmere	Brighton
K Bradford	Notts Co
L Chesterfield	Brentford
M Colchester	Chester
N Tott Res	Luton Res

We're top of the league!

Team effort.

That's what makes Skefko the leading manufacturer of rolling bearings in the country. We're working together to make even better bearings. Faster. Cheaper. And always on time.

What's in it for us? A good secure job for a start. And good benefits and promotion prospects too. Take it from us - Skefko's a great company to team up with.



SKF

THE SKEFKO BALL BEARING CO., LTD. LUTON, BEDFORDSHIRE

HALF TIME SCORES

FIRST LIST

A Arsenal	Ipswich T
B Coventry C	Everton
C Leeds Utd	Derby C
D Liverpool	Soton
E Man City	Wolves
F Newcastle	Chelsea
G Notts F	Burnley
H Sheff Wed	Crystal P
K Stoke City	Tottenham
L West Brom	Man Utd
M West Ham	Sunderland
N Birmingham	Cardiff C

SECOND LIST

A Blackburn	Leicester C
B Blackpool	Bolton W
C Bristol C	Carlisle Utd
D Hull C	Huddersfield
E Middlesbro	Watford
F Millwall	Sheff Utd
G Norwich C	Preston NE
H Oxford U	Aston Villa
K Portsmouth	Swindon T
L QPR	Charlton
M Bournm'th	Bristol R
N Bury	Barrow

THE LINE-UP THIS AFTERNOON

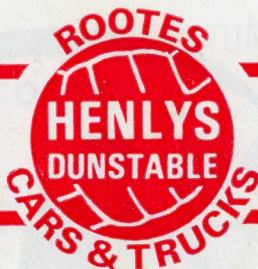
LUTON TOWN

Colours: Shirts White
Shorts Black

Coach: JIMMY ANDREWS

	1	
	Sandy Davie	
2		3
John Ryan		Jack Bannister
4	5	6
Mike Keen <i>Captain</i>	Chris Nicholl	Alan Slough
7	9	11
John Collins	Matt Tees	Graham French
	8	10
	Malcolm Macdonald	Keith Allen
Sub: Brian Lewis		

Referee
N. GRAHAM
*Newbiggin-by-the-Sea,
Northumberland*



Linesmen
R. E. EVANS (*Upminster*)
Red flag
J. W. D. WILKES (*Solihull*)
Yellow flag

Sub: **Fred Binney
or Alan Welsh**

	10		8
	Tommy Mitchinson		Micky Cave
11		9	7
Tony Scott		John Rudge	John Benson
6		5	4
Bill Kitchener		Alan Young	Jimmy Dunne
	3		2
	Bob Glozier		Ken Sandercock
		1	
		Andy Donnelly	

Colours: Shirts Gold and Royal Blue
Shorts Gold and Royal Blue

Manager: ALLAN BROWN

TORQUAY UNITED

Result: LUTON TOWN

TORQUAY UNITED