



LUTON TOWN

FOOTBALL CLUB

Telephone: Luton 23151



DIVISION III

v TRANMERE ROVERS

Tuesday 3 March 1970 Kick-off: 7.30 p.m.

Official Programme: Price 1/-

FIXTURES 1969-70

DIVISION THREE

| Date | Opponents | Attendance | Result |
|------------------|------------------------|------------|--------|
| August | | | |
| Sat 9 | BARROW | 12,080 (H) | 3-0 |
| Wed 13 | FLC1 Peterboro* | 10,249 (A) | 1-1 |
| Sat 16 | Bournemouth | 9,735 (A) | 1-0 |
| Tues 19 | FLC1 PETERBORO* | 13,105 (H) | 5-2 |
| Sat 23 | ORIENT | 13,761 (H) | 3-2 |
| Tues 26 | HALIFAX T. | 13,759 (H) | 1-1 |
| Sat 30 | Gillingham | 7,792 (A) | 2-0 |
| September | | | |
| Tues 2 | FLC2 MILLWALL | 17,372 (H) | 2-2 |
| Sat 6 | BRISTOL R. | 15,198 (H) | 4-0 |
| Mon 8 | FLC2 Millwall | 14,125 (A) | 1-0 |
| Sat 13 | Bradford City | 10,851 (A) | 1-1 |
| Tues 16 | Southport | 4,003 (A) | 3-0 |
| Sat 20 | SHREWSBURY | 15,396 (H) | 2-2 |
| Tues 23 | FLC3 Sheffield U. | 16,884 (A) | 0-3 |
| Sat 27 | Plymouth Argyle | 14,111 (A) | 3-1 |
| Tues 30 | Walsall | 7,557 (A) | 3-1 |
| October | | | |
| Sat 4 | STOCKPORT | 15,944 (H) | 2-0 |
| Tues 7 | BOURNEMOUTH | 18,065 (H) | 0-0 |
| Sat 11 | Doncaster Rovers | 17,380 (A) | 0-2 |
| Sat 18 | Brighton & H.A. | 18,722 (A) | 2-1 |
| Sat 25 | TORQUAY U. | 16,087 (H) | 1-1 |
| November | | | |
| Sat 1 | Rotherham U. | 8,727 (A) | 1-1 |
| Sat 8 | BARNSELY | 17,442 (H) | 1-1 |
| Sat 15 | FAC1 Bournemouth | 7,362 (A) | 1-1 |
| Tues 18 | FAC1 BOURNEM'TH | 13,384 (H) | 3-1 |
| Sat 22 | ROCHDALE | 15,876 (H) | 2-0 |
| Tues 25 | FULHAM | 16,485 (H) | 1-0 |
| December | | | |
| Sat 6 | FAC2 Hillingdon | 9,333 (A) | 1-2 |
| Sat 13 | BRADFORD C. | 11,857 (H) | 5-0 |
| Fri 26 | Orient | 17,619 (A) | 0-1 |
| Sat 27 | GILLINGHAM | 17,402 (H) | 1-2 |

1970

| Date | Opponents | Attendance | Result |
|-----------------|--------------------------|------------|--------|
| January | | | |
| Sat 10 | Shrewsbury Town | 4,206 (A) | 1-5 |
| Sat 17 | PLYMOUTH A. | 12,358 (H) | 0-2 |
| Sat 24 | Bury (4) | 6,893 (A) | 3-1 |
| Sat 31 | Stockport County | 3,922 (A) | 1-1 |
| February | | | |
| Sat 7 | DONCASTER (5) | 12,876 (H) | 4-0 |
| Tues 10 | Bristol Rovers | 13,297 (A) | 0-3 |
| Sat 14 | Barrow | 3,843 (A) | 1-2 |
| Sat 21 | Torquay United (6) | 6,819 (A) | 2-2 |
| Sat 28 | BRIGHTON | 17,584 (H) | 1-1 |
| March | | | |
| Tues 3 | TRANMERE R. | (H) | |
| Sat 7 | Rochdale | (A) | |
| Wed 11 | Reading | (A) | |
| Sat 14 | MANSFIELD (SF) | (H) | |
| Tues 17 | BURY | (H) | |
| Sat 21 | Tranmere Rovers | (A) | |
| Fri 27 | ROTHERHAM U. | (H) | |
| Sat 28 | READING | (H) | |
| Mon 30 | | | |
| Tues 31 | Barnsley | (A) | |
| April | | | |
| Sat 4 | Halifax Town | (A) | |
| Mon 6 | BEDFORD TOWN | (H) | |
| | Beds. Pro. Cup Final | | |
| Wed 8 | Fulham | (A) | |
| Sat 11 | WALSALL (7.30 pm) | (H) | |
| Tues 14 | SOUTHPORT | (H) | |
| Mon 20 | Mansfield | (A) | |

FOOTBALL COMBINATION

| Date | Opponents | Attendance | Result |
|--------------------------|--------------------------|------------|--------|
| August | | | |
| Sat 16 | PETERBORO* | 1,326 (H) | 4-2 |
| Sat 23 | Norwich City | (A) | 0-0 |
| Sat 30 | TOTTENHAM H. | 1,683 (H) | 2-2 |
| September | | | |
| Sat 6 | Gillingham | (A) | 2-3 |
| Sat 13 | BOURNEMOUTH | 1,124 (H) | 3-3 |
| Tues 23 | Northampton Town | (A) | 1-5 |
| Sat 27 | SWINDON T. | 1,306 (H) | 2-0 |
| October | | | |
| Wed 1 | Crystal Palace | (A) | 1-2 |
| Sat 11 | BIRMINGHAM | 1,309 (H) | 1-2 |
| Sat 25 | Tottenham H. (Cup) | (A) | 1-3 |
| November | | | |
| Sat 1 | SOUTHAMPTON | 1,239 (H) | 5-3 |
| Tues 4 | Queens Park Rangers | (A) | 5-1 |
| Sat 8 | Leicester City | (A) | 0-4 |
| Sat 22 | | | |
| December | | | |
| Sat 13 | Bristol Rovers | (A) | 1-1 |
| Tues 16 | BIRMINGHAM (Cup) | 491 (H) | 3-0 |
| Sat 20 | Arsenal | (A) | 0-5 |
| Sat 27 | Northampton (Cup) | (A) | 2-2 |
| Tues 30 | Walsall (Cup) | (A) | |
| 1970 | | | |
| January | | | |
| Sat 3 | LEICESTER C (Cup) | 742 (H) | 0-4 |
| Mon 12 | WALSALL (Cup) | 619 (H) | 1-1 |
| Sat 17 | Plymouth Argyle | (A) | 0-1 |
| Tues 20 | TOTTENHAM (Cup) | 1,046 (H) | 0-2 |
| Sat 24 | READING | 739 (H) | 2-0 |
| Tues 27 | Birmingham (Cup) | (A) | 1-2 |
| Sat 31 | N'HTON (Cup) | 1,006 (H) | 4-1 |
| February | | | |
| Sat 7 | | | |
| Mon 16 | CHELSEA | 1,907 (H) | 1-0 |
| Sat 21 | SWANSEA T. | 937 (H) | 3-1 |
| Wed 25 | Cardiff City | (A) | 0-3 |
| Sat 28 | | | |
| March | | | |
| Sat 7 | OXFORD UNITED | (H) | |
| Tues 10 | IPSWICH T | (H) | |
| Sat 14 | | | |
| Sat 21 | West Ham United | (A) | |
| April | | | |
| Thurs 2 | Fulham | (A) | |
| Sat 4 | BRISTOL C. | (H) | |
| To be re-arranged | | | |
| | Walsall | (A) | |
| | Leicester C (C) | (A) | |

©Football League Ltd, 1969

Published by
Luton Town Football and Athletic Company Limited,
Kenilworth Road, Luton.

Printed by
White Crescent Press Limited, Crescent Road, Luton.
Telephone Luton 23122



LUTON TOWN FOOTBALL AND ATHLETIC CO, LTD

KENILWORTH ROAD, LUTON, BEDFORDSHIRE
TELEPHONE 0582 23151

Established 1885 Incorporated 1897
First Professional Side Season 1891-1892
Football League Division III Champions 1936-37
Football League Division II Runners-up 1954-55
FA Challenge Cup Finalists 1958-59
Football League Division IV Champions 1967-68

OFFICIAL PROGRAMME 3 MARCH 1970

New Series
Vol 1. No 23.

Directors: A. T. HUNT, *Chairman*, L. S. HAWKINS, *Vice-Chairman*,
J. A. C. BAIN, R. I. BURR, T. HODGSON,
ERIC MORECAMBE, H. RICHARDSON
Chief Executive and Manager: Alec Stock
Hon Medical Officers: Dr C. J. Buckingham, MB, BS and
Dr P. J. Burrows, MB, BCh, DObst. RCOG
Hon Dental Surgeon: A. Hargreaves, Esq
Hon Solicitor: E. Waller, Esq
Auditors: Messrs Keens, Shay, Keens & Co
Secretary: R. Readhead

Eric Pugh's Page



To say that the result against Brighton came as a sharp disappointment is to under-state the case because, in view of the relative positions of the teams with Brighton becoming the new pace-setters, the Town certainly could not afford to drop a point.

With only seven gained out of the last twenty-two points at stake, and only two victories to show during that period, the Town have set themselves a lot to do in the crowded last weeks of the season.

Consistency must be regained

The promotion chance is still there, of course, though from the position they were in before Christmas, obviously, the club had hoped to be far more strongly placed at this late stage.

Most people have their own ideas about what has gone wrong, but this is no time for recriminations. The aim must now be to regain consistency, and the opportunity comes tonight when the visitors are Tranmere Rovers, who have on their hands a struggle against relegation.

Unfortunate season for Tranmere

For them, it has been an unfortunate

season because they have been sorely troubled by injuries to their more experienced players and have had to thrust responsibility on youngsters whom, perhaps, they would have preferred to have had a more solid grounding.

However, Dave Russell, who is now the Rovers' general manager, with former Blackpool full back Jackie Wright in charge of the team, has some very good young players, mostly recruited from Merseyside and they can afford to view the future with optimism.

Convincing win would be tonic

However, more urgent to them is the

immediate present and they badly need a winning run beginning now if they are to avoid the drop.

If the Town can find something of the form that disposed of Bradford City and Doncaster Rovers, then they will ensure that the Tranmere comeback does not begin tonight and a convincing victory would certainly be a tonic to all concerned.

Some confidence has been lost

Chances came in the second half of the match with Brighton to have enabled the tide to be turned, but it does seem, not surprisingly perhaps, in view of the moderate nature of the results achieved recently, that some confidence has been lost.

The best way in which to regain that is through a rousing victory and something of that nature tonight would have a good effect on the Luton prospects in two vital away matches that lie ahead.

Two hard away games looming up

On Saturday, they are due to meet Rochdale who may well have exceeded their own expectations in their first season in Division III by remaining in the promotion hunt for so long.

Obviously, they will be all out to strike a decisive blow for themselves by taking both points from the Town and they certainly showed their mettle on Saturday by holding Reading to a single goal at Elm Park.

Tony Buck suffered a broken leg

Unfortunately, that match had serious consequences for them because it cost them the effective services for the rest of the season of Tony Buck.

The former Newport County centre-forward, who has been a frequent scorer, broke a leg and, with their limited playing resources, Rochdale cannot afford to lose, especially at this stage of the season, such an experienced player.

After that the Town have to prepare for what may well be an ever sterner test when they visit Reading tomorrow week.

Reading having a great run

Like Brighton, the Berkshire club have come along with a late, highly consistent run which has put them among the

promotion front-runners and this clash and the return at Kenilworth Road on Easter Saturday, will be of the highest importance.

Managed by Jack Mansell, Reading are having a brilliant run, their gates are soaring and, strangely, their new lease of life began immediately after their shock Cup defeat at Brentwood.

The Town know what it is to suffer a setback at the hands of a non-League club, but, in their case, it seems to be one from which they have recovered on only isolated occasions.

More bruising tackling than good football

Last Saturday's clash with Brighton was a tough affair, more productive of bruising tackling than of good football and it may be that, tonight, the Town will be allowed to develop their plans without much of the tough tackling to which they were subjected.

One can only deprecate the off the field incidents which led to a crowd of Brighton followers, I would scarcely describe them as supporters, breaking into the ground before the gates had been opened.

Gates and turnstiles were damaged

In doing so, gates and turnstiles were damaged, but police evicted them all and were in control afterwards, despite some spasmodic outbreaks of trouble behind the Oak Road goal.

Maybe it is a sign of the permissive times, but violence among football followers, over which the clubs cannot have control, is becoming a blot on our national game and strong steps will obviously have to be taken to stamp it out.

Relatively speaking, the Town have not suffered so much as have other clubs, but there always seems to be the lunatic fringe wanting to cause trouble.

OUR COVER PICTURE

Not many Cambridge Blues become professional footballers, but Peter Phillips, ex-amateur international did.

He took the plunge with the Town and looks set for a successful career.

Here he is pictured in action in a recent reserves' match.

Picture: Home Counties Newspapers Ltd.

CONNELLS

Auctioneers, Surveyors
Valuers and Estate Agents

5, Upper George Street, Luton

Telephone: 31261 for

Houses and Bungalows

COUNTRY HOUSES, COMMERCIAL AND
INDUSTRIAL PREMISES, COMPULSORY
PURCHASE NEGOTIATIONS IN

Luton and Surrounding Districts

Branch Offices throughout
HERTFORDSHIRE, BEDFORDSHIRE, BUCKINGHAMSHIRE
and at 62, GROSVENOR STREET, LONDON, W.1.



THE ONE STOP SHOPPING CENTRE for

Hardware, Electrical, Men's Wear, Fuel, Catering,
Footwear, Bookshop, Drapery, Furnishing, Toys &
Sports, Grocery, Greenfruit and Butchery with Credit
Facilities to suit your requirements.

PLUS DIVIDEND STAMPS

SUPERSTORE

4 NEW BEDFORD ROAD

LUTON. Tel: 21171

LUTON CO-OPERATIVE SOCIETY LTD



From Bob's Office

We now know three of the opposing teams we shall be meeting during the fortnight's stay in Spain we shall be making beginning at the end of April.

Firm dates of the games are not yet available but we shall be playing Benidorm, where the party will be making its headquarters, Hercules FC, of Alicante, and Mestalla, in the Valencia Stadium which is reckoned to be second only to Real Madrid so far as magnificence is concerned.

Finalisation next week

The agent who is making the arrangements, flies out to Spain next week to finalise the dates and also to come to terms for a fourth match.

There is a chance here for our supporters to have a football holiday because there is on offer a package deal covering the flight from Gatwick, plus hotel accommodation, together with private bathroom, for £38 16s each for a twin bedded room.

Anyone wanting a single room should add £2 per week to the price.

Accommodation can be arranged at the Hotel Las Vegas in Benidorm for supporters, a limited number of whom will be able to fly out in the same plane as the official party.

It is expected that departure will be on the evening of 29-30 April on a flight to Alicante and the return trip will be made on 14 May.

Winner of the competition set in the programme for the home match with Doncaster Rovers was Mr W. Fitton, 19 St Catherine's Avenue, Luton, who correctly named Swansea City as the club which has changed its name this season.

This happened last season

Swansea became a city by Royal Charter last summer. Name changes have also been made, but not this season, by Hartlepool, who dropped the final 's' and the 'United', and Orient, who discarded 'Leyton'.

Some supporters put them forward as the answer, but reluctantly, we have had to turn them down.

Current question, which was also put in



Bob Readhead, Secretary

last Saturday's programme is, 'How many Laws are there in the game of Association Football?'

Answers must be accompanied by an entrance fee of sixpence and there will be a gentleman's or lady's watch for the first correct solution opened.

It has now been confirmed that our away match with Mansfield Town will be played on Monday, 20 April (7.30). Barring anything untoward in the meantime, this will complete our League fixtures for the season.

Happy augury?

I am hoping that it is a happy augury that Watford clinched promotion last season by winning their last match - at Mansfield! May history repeat itself.

If St Albans City and Dagenham draw their Amateur Cup semi-final at Brentford, the replay will take place on this ground the following Saturday, 21 March.

Were pleased with arrangements

We regard this as a considerable honour and proof that the Football Association were pleased with the arrangements we made for the recent Youth International.

Should there be a replay, the Chiltern Youth Cup Final will have to be put off, but there will be no difficulty in arranging a satisfactory date for them.

At the next home match a collection will be made outside the ground for the South Beds Society for the Blind. Please give generously.

We have now arranged to meet Bedford Town on this ground in the final of the Bedfordshire Professional Cup on Monday 6 April (7.30).

Outside-right. Inside-right.



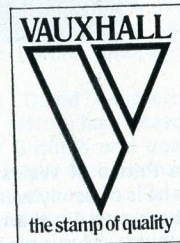
What makes Viva the 1-litre league leader?

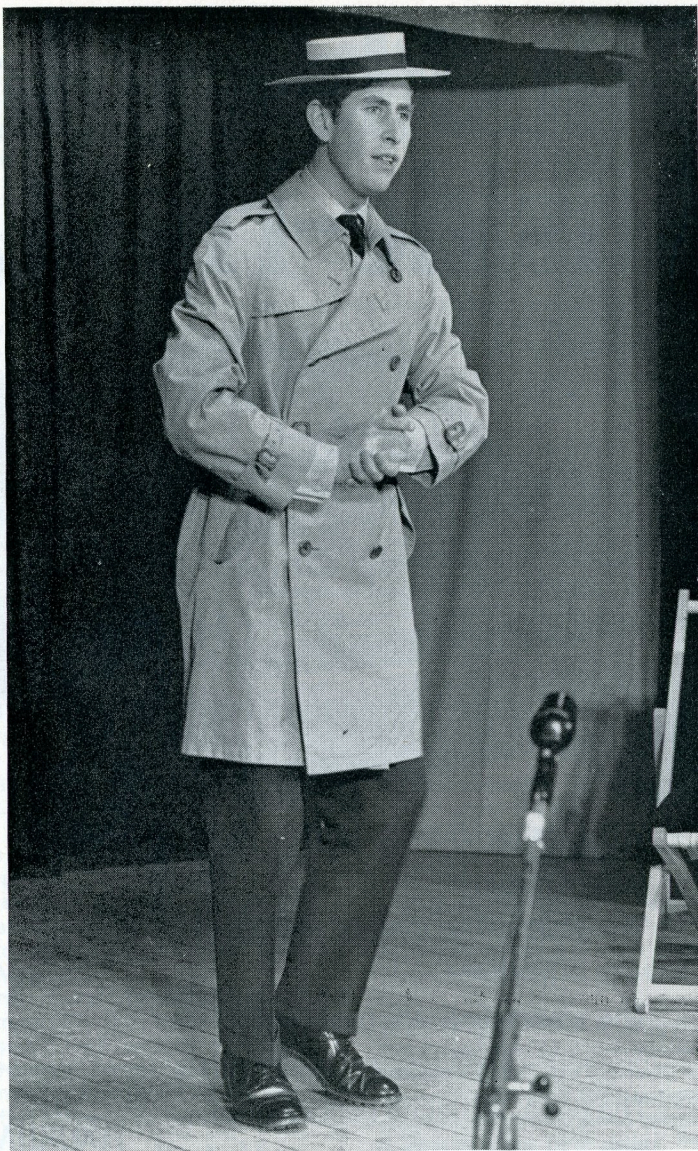
The shape. The forward line's great - so is the back.

The space. Full 4/5 passenger comfort - and luggage-room to match!

The pace. All-action performance, with sports-car handling - and in-built safety.

The price. Viva prices start at £701. And there are 20 all-star performers to choose from. Why don't you join the Viva supporters club?





Prince Belongs to the Right 'Club'

The Prince of Wales may have forgotten his lines in a recent rehearsal at Cambridge, but he is certainly wearing the right hat!
 Less popular than it used to be, the Boater is still the symbol of the Town FC, and, of course, of our modern Hatters' Club.

Picture – Press Association Photos

Injuries have plunged Tranmere into real relegation trouble *By Tony Pullein*

A recent run of eleven League games without a win – during which period they collected only three points – plunged Tranmere into serious relegation trouble. Their fight for survival has been seriously hampered by a succession of injuries to key players, Stan Storton, Eric Brodie and level top-scorer Derek Smith (fourteen goals this season) all being forced out of action during the past three weeks.

Responsibility on Yardley

Smith's absence throws more responsibility onto Tranmere's other lethal striker George Yardley, who also had fourteen prior to last Saturday's game.

George has twice ended club top scorer, his best season being 1967–68 when he notched twenty-seven, including two hat-tricks and a four-goal hit.

Not bad for a man who once won a Scottish amateur international cap – as a goalkeeper!

Was asked to lead attack

As a youngster George was undecided as to his best position. But East Fife spotted him playing in goal and gave him his chance in that position.

While with them he gained his Scottish cap but, before signing professional, he broke a bone in his hand.

When he recovered East Fife had another goalkeeper so they asked him to play centre-forward in the reserves.

He hit four goals and won immediate promotion to the senior side. Later he played for Montrose, then emigrated to Australia.

Had a trial period here

When he returned in 1966 he almost signed for Luton Town. He had a trial period, but decided, instead, to go to Tranmere.

Two years ago he received a serious injury and was advised to give up soccer.

But he made a come-back last season, only to break down again. He decided to go back to Australia. Then, finding he could stand up to football again, he returned to Prenton Park last summer.

The Tranmere side consists almost entirely of local lads developed in manager Dave Russell's junior sides.

Three exceptions are Tony Knapp, Paul Crossley and Frank Gill. Knapp, a player of vast experience, started as a Nottingham Forest ground staff lad but went to Leicester to begin his professional career in 1954.

Twice went for big money

Originally a centre-forward, he switched to centre-half and won selection for the Football League XI in this position. Southampton paid £25,000 for him in 1961 and, in six very successful years at The Dell, he missed only a handful of games.

He shifted to Coventry for £20,000 in 1967 and then spent about a year in the United States before signing for Tranmere last October.

Paul Crossley started his League career with Rochdale in 1965–66, moving to Preston in 1967. He didn't enjoy much success at Deepdale, though, and he spent part of last season on loan to Southport. Tranmere signed him last June.

Former Busby babe

Frank Gill developed in the Manchester United nursery but wasn't fortunate enough to get into the first team. He joined Tranmere in July 1968 and made his League debut last season.

Two of Tranmere's most loyal players are Allan King, now back in the team following suspension, and Joe Pritchard, both of whom made their senior bows in 1962–63. King has now played more than 250 first-team games for the club.

Beamish a marksman

Inside-forward Ken Beamish got his League debut in 1965–66 and won a regular place two seasons ago. He was top scorer with fourteen goals last season and had nine before Saturday's game.

George Scott and David Moorcroft both rose to senior status last season while full-back David Griffiths and goalkeeper Frank Lane both got their chances in the League eleven this term. David Kennedy came into the team two seasons ago but is only now beginning to play regularly.

(continued on page 11)

Luton's leading newsagents

HOUGHTONS

CONFECTIONERS · TOBACCONISTS
GREETINGS CARD SPECIALISTS

- ★ 16 The Parade, Hill Rise
- ★ 3 Ashwell Parade, Sundon Park
- ★ 82 Putteridge Road, Stopsley
- ★ 253 Birdsfoot Lane
- ★ 150 Sundon Park Road
- ★ Jansel House, Stopsley
- ★ 217 Dunstable Road
- ★ 178 Ashcroft Road, Stopsley
- ★ 8 Hillborough Crescent, Houghton Regis

*Whenever you are near
— pay us a visit
We will be pleased
to serve you*

buy your
EVENING **POST**
with full-time
results outside
the ground
after the match



RICHARDSON and BOTTOMS

LIMITED

*Builders
and
Contractors*

107, BISCOT RD.
Luton

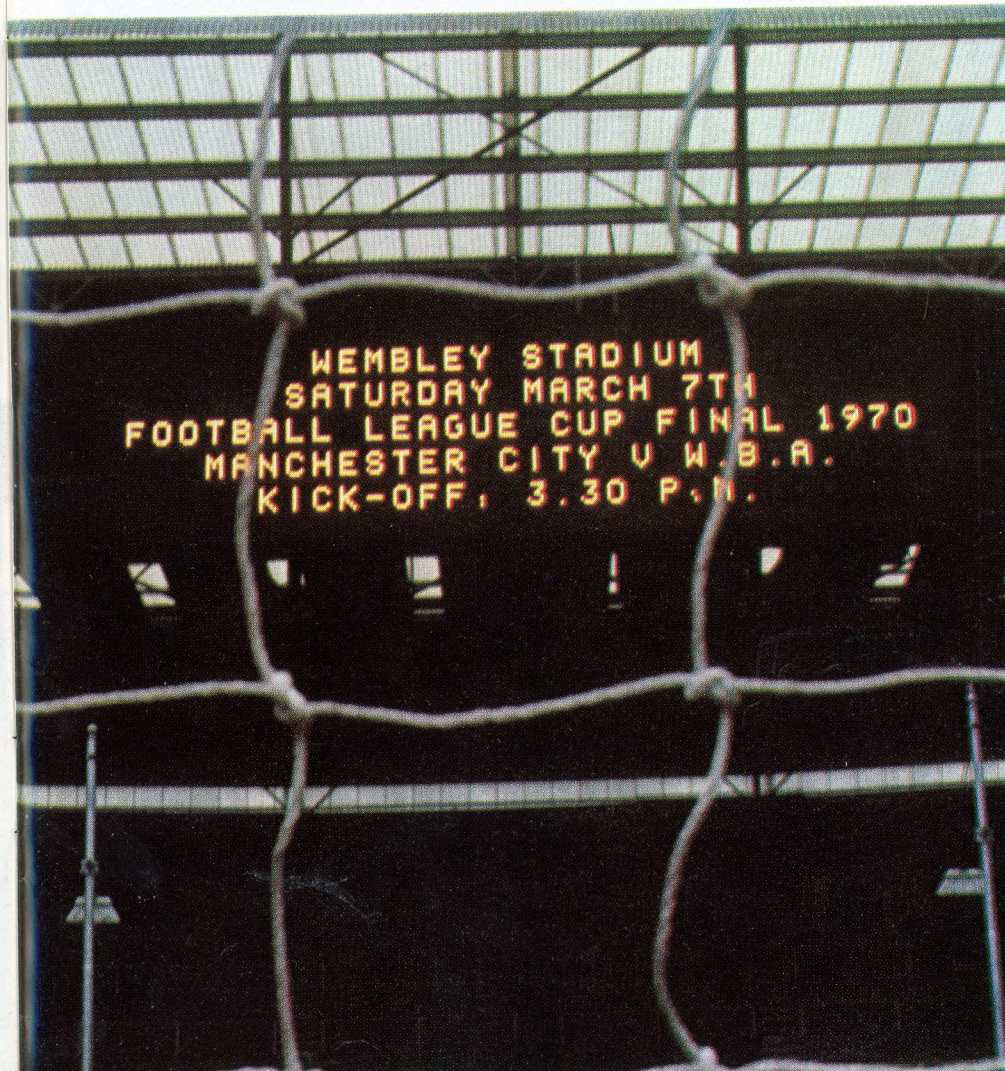
Telephone: 25628

Football League Review



ONE SHILLING

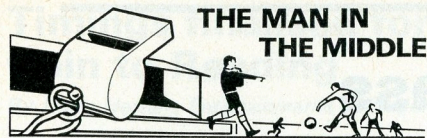
THE OFFICIAL JOURNAL OF THE FOOTBALL LEAGUE



No flannel- All Flavour



Round here
that's what Park Drive
means to us
Park Drive Flavour



DAVID SMITH (Stonehouse)

David Smith must be the only League referee who's a linesman by profession! He works as a chargehand linesman for the Midlands Electricity Board.

Of all referees, Mr Smith probably appreciates the player's point of view as much as any – though he doesn't tolerate any nonsense – for it was a dispute with the referee, when he was a goalkeeper in local football, that set him on the road to success as a referee himself. 'All right', said the ref, 'If you can do any better, why don't you take it up?' So he did!

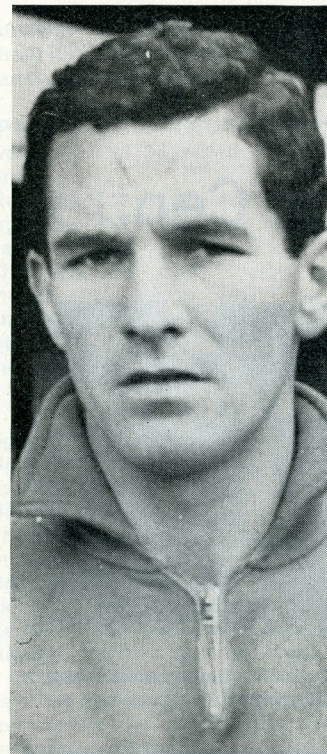
On the FIFA panel

Progression through Gloucestershire amateur football and the Western League took him onto the Football League linesmen's list in 1954. Five years later he was a League referee and last season he was promoted to the FIFA panel.

He has refereed the League Cup final (in 1966) the FA Amateur Cup final (1964) and the Channel Islands' Muratti Vase final in 1963. He has refereed two FA Cup semi-finals and, last year, was linesman for the USSR v Poland international.

Works hard

Mr Smith believes in working himself hard. He handles almost 100 games per season – the more games, the more experience gained – is his philosophy – and in his 'spare' time he is secretary of the Stroud & District League. He lives with his wife and son in Stonehouse, Gloucestershire.



YARDLEY NEARLY BECAME A LUTON PLAYER

George Yardley, Tranmere centre-forward who three years ago, had a month's trial period here.

Terms could not be agreed for a permanent engagement and he went to Tranmere where he emerged as a consistent marksman.

Injury threatened to end his career and he went to Australia for a second time. Then, recovering, he returned to the Rovers and has been knocking in the goals again this season.

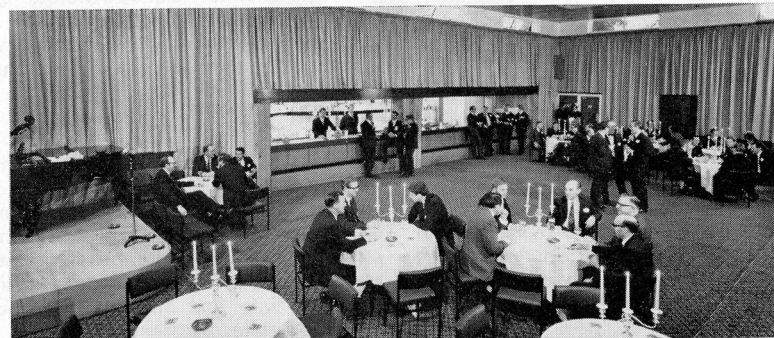
Tony Pullein (continued from page 9)

No point here yet

Tranmere have yet to take a point from Kenilworth Road, our League record against them reading:

| | P | W | D | L | For | Ag | Pt. |
|------|---|---|---|---|-----|----|-----|
| Home | 4 | 4 | 0 | 0 | 10 | 2 | 8 |
| Away | 4 | 2 | 0 | 2 | 5 | 5 | 4 |
| | 8 | 6 | 0 | 2 | 15 | 7 | 12 |

Two in a class of their own



Comfort for all manner of functions – that is the motto of the new, luxurious Hatters' Club which is proving so popular.

Today, the club is open until 2.55 p m for drinks and snacks and re-opens from 4.45 to 5.30 p m and then continuously from 6 o'clock until 11.30 p m.

The New Sports Centre



Our new Sports Centre at 231 Dunstable Road which offers a comprehensive list of sports goods, toys and games at competitive prices.

Timings finalised for the train to Reading

By Harry Haslam, Entertainments Manager

Timings have now been finalised for a chartered train to go to Reading for the vitally important promotion struggle a week tomorrow night and we have been able to put it on at a return fare of 15s which should be within the reach of everybody.

The train will leave Luton at 5.10 p m, calling at Harpenden 5.18, St Albans 5.27 and arriving at Reading 6.47.

Return trip will begin at 10 p m, arriving St Albans 11.18, Harpenden 11.27 and Luton 11.30 p m.

Accepting bookings for Rochdale

Meanwhile bookings are also being accepted for the train to Rochdale on Saturday for which the return fare is £1 2s 6d.

This leaves Luton at 8.45 a m, arriving Bedford 9.04 and Rochdale 12.45 p m.

The train will depart Rochdale at 5.47 p m, arriving Bedford 9.40 and Luton at 10 o'clock.

MASCOT

Andrew Smith of 26 Evans Grove, St Albans, who is 12 years old.

SUPPORTER OF THE WEEK

Trevor Hards, of 58 Wood Green Road, Luton.

Has missed only one match since the away game at Hartlepool in Division IV in January 1968.

This was the away match against Tranmere last season which he was unable to go to because he went to Southport earlier in the week and had no money. This record includes cup, league and friendly matches.

Biggest thrill

Biggest thrill: Luton 4, Crewe 0 when Luton won Division IV championship.

Biggest disappointment: Losing 1-0 at Mansfield last Easter and missing promotion.

Best goal: Bruch Rioch's thirty-five-yards volley in the 2-2 draw at Barnsley, December 1967.

Biggest laugh: a geology report from the College which stated: 'If he was as keen at his geology as he is in supporting Luton Town, he would be a good examination prospect.'



BONANZA WINNERS

Winning numbers in the Luton Town FC Bonanza draw made at the home match against Brighton.
1st prize: £10 - 0833
2nd prize: radio - 0905
3rd prize: radio - 2219
4th prize: watch - 0693
5th prize: watch - 0454
6th prize: Odeon Cinema tickets - 1991
7th prize: Odeon Cinema tickets - 1983

LUTON TOWN FC POOL

WINNING NUMBERS SO FAR THIS WEEK

Saturday: £20-15177; £15-34863; £5-41421; £5-17600; £2-22307; £2-45639-£1-07415.
Monday: £20-04384; £15-28301; £5-31998; £5-05547; £2-47364; £2-13108; £1-36917.
Tuesday: £20-30881-£15-01202; £5-24333; £5-38259; £2-11231; £2-27642; £1-21845.

HOW THEY STAND

DIVISION III

| | P | W | D | L | F | A | P |
|---------------------------|-----------|-----------|-----------|----------|-----------|-----------|-----------|
| Brighton | 34 | 17 | 9 | 8 | 41 | 28 | 43 |
| Reading | 34 | 17 | 9 | 8 | 61 | 52 | 43 |
| Orient | 31 | 16 | 10 | 5 | 46 | 25 | 42 |
| LUTON TOWN | 32 | 15 | 10 | 7 | 55 | 34 | 40 |
| Bristol Rovers | 33 | 14 | 12 | 7 | 60 | 42 | 40 |
| Barnsley | 34 | 14 | 11 | 9 | 54 | 44 | 39 |
| Bradford City | 33 | 15 | 8 | 10 | 45 | 34 | 38 |
| Rochdale | 32 | 15 | 6 | 11 | 53 | 41 | 36 |
| Rotherham United | 34 | 11 | 13 | 10 | 48 | 37 | 35 |
| Fulham | 33 | 11 | 13 | 9 | 55 | 46 | 35 |
| Torquay | 33 | 11 | 13 | 9 | 48 | 42 | 35 |
| Shrewsbury Town | 33 | 11 | 13 | 9 | 47 | 43 | 35 |
| Halifax Town | 32 | 12 | 9 | 11 | 36 | 41 | 33 |
| Bury | 35 | 13 | 6 | 16 | 64 | 66 | 32 |
| Mansfield Town | 30 | 12 | 7 | 11 | 40 | 36 | 31 |
| Doncaster Rovers | 33 | 12 | 7 | 14 | 39 | 40 | 31 |
| Plymouth | 33 | 12 | 7 | 14 | 38 | 41 | 31 |
| Walsall | 30 | 11 | 6 | 13 | 32 | 45 | 28 |
| Bournemouth | 34 | 9 | 10 | 15 | 38 | 59 | 28 |
| Southport | 31 | 8 | 9 | 14 | 36 | 41 | 25 |
| Tranmere Rovers | 30 | 7 | 9 | 14 | 36 | 58 | 23 |
| Barrow | 35 | 6 | 10 | 19 | 29 | 61 | 22 |
| Stockport County | 33 | 5 | 9 | 19 | 21 | 48 | 19 |
| Gillingham | 30 | 6 | 6 | 18 | 31 | 49 | 18 |

Not including last night's result

FOOTBALL LEAGUE

V

SCOTTISH LEAGUE

AT COVENTRY

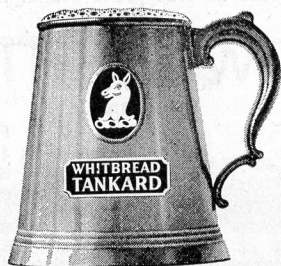
WEDNESDAY 18 MARCH 1970

KICK-OFF 7.30 p m

Tickets in advance are obtainable from: 'The Secretary, Coventry City FC, High-field Road, Coventry', as follows:

Main Stand and Sky Blue Stand 16s, 13s, 11s. Admission to ground (6s and 5s) will be by cash at the turnstiles.

Applications for tickets are to be accompanied by remittance and stamped, addressed envelope for the return of tickets.



WHITBREAD
TANKARD
cool,
clear, refreshing

Available in all Bars

DIVISION III

Luton Town 4 Doncaster Rovers 0

Davie; Ryan, Bannister; Keen, Nicholl, Slough; Macdonald, Collins, Tees, Allen, French.

Substitute: Moore.

Scorers: Slough, Macdonald (2, 1 pen), Tees.

Bristol Rovers 3 Luton Town 0

Davie; Ryan, Bannister; Keen, Nicholl, Slough; Moore, Macdonald, Tees, Allen, French.

Substitute: Collins.

Barrow 2 Luton Town 1

Davie; Ryan, Bannister; Keen, Nicholl, Slough; Macdonald, Collins, Tees, Allen, French.

Substitute: Branston.

Scorer: French.

Torquay United 2 Luton Town 2

Davie; Ryan, Jardine; Slough, Nicholl, Moore; French, Macdonald, Tees, Keen, Harrison.

Substitute: Busby.

Scorers: Harrison, Macdonald.

Luton Town 1 Brighton 1

Davie; Ryan, Jardine; Slough, Nicholl, Moore; French, Collins, Macdonald, Keen, Harrison.

Substitute: Tees.

Scorer: Macdonald (pen).

FOOTBALL COMBINATION

Luton Town 1 Chelsea 0

Davie; Ryan, Jardine; Slough, Branston, Moore; French, Tees, Macdonald, Bannister, Harrison.

Substitute: Busby.

Scorer: Macdonald.

Luton Town 3 Swansea Town 1

Starling; Hooper, Shanks; Guild, Branston, Delgado; Collins, Wainwright, Allen, Phillips, Hipwell.

Substitute: Read.

Scorers: Allen, Collins (pen), Phillips.

Cardiff City 3 Luton Town 0

Starling; Hooper, Shanks; Guild, Branston, Delgado; Collins, Wainwright, Busby, Allen, Phillips.

Substitute: Hipwell.



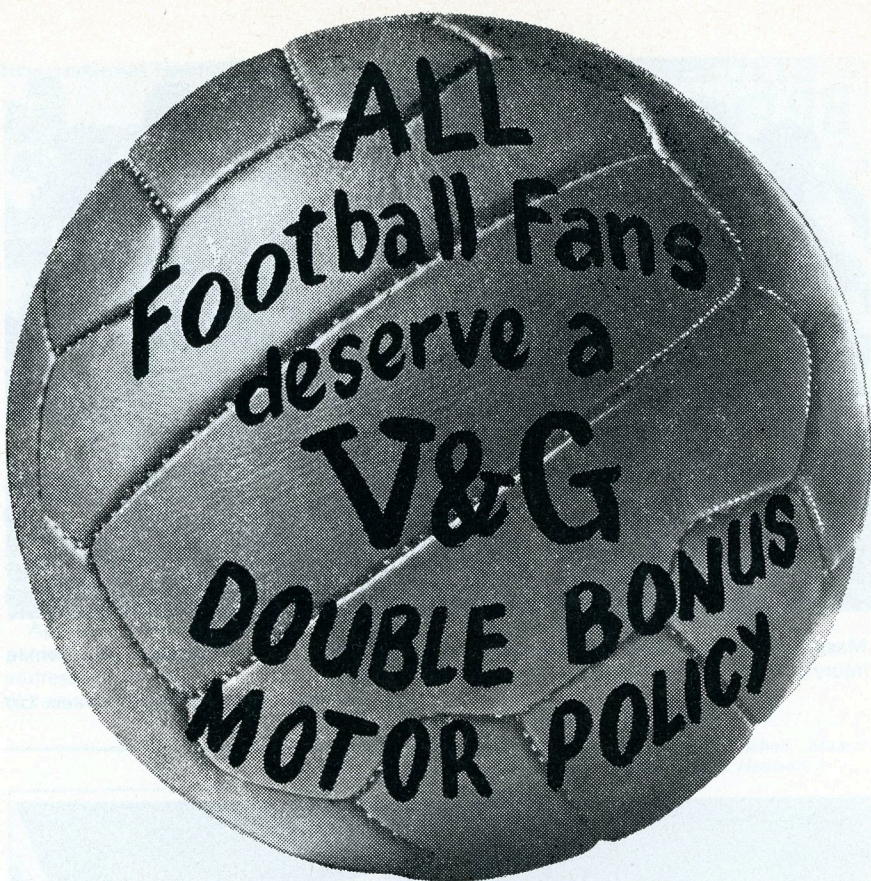
Mass conference of Brighton players while Bobby Smith receives attention to an ankle injury during the tough struggle at Kenilworth Road.

Picture: Luton News and Green 'Un



Geoff Sidebottom, Brighton goalkeeper, goes down in a heap to prevent a centre reaching Malcolm Macdonald.

Picture Luton News and Green 'Un



**THE V&G
DOUBLE BONUS
MOTOR INSURANCE POLICY
GIVES FAIRER TERMS
TO EVERY DRIVER**

For further information contact your local officially appointed V & G Insurance Broker, or write or phone the address below.

**V&G THE VEHICLE & GENERAL
GROUP OF
INSURANCE COMPANIES**

Group Headquarters,
Administration & Operations:
Bushey House,
High Street, Bushey,
Hertfordshire.

THE VEHICLE & GENERAL INSURANCE CO. LTD.
LIFE, CASUALTY & GENERAL INSURANCE CO. LTD.
AUTOMOBILE & GENERAL INSURANCE CO. LTD.
THE GENERAL & COMMERCIAL MOTOR INSURANCE CO. LTD.
METROPOLITAN GENERAL INSURANCE CO. LTD.
WORLD AUXILIARY INSURANCE CORPORATION LTD.

| | APPEARANCES | | | | GOALS | | | |
|--------------------|-------------|-----|-----|----|-------|-----|-----|----|
| | FL | FAC | FLC | FC | FL | FAC | FLC | FC |
| <i>Goalkeepers</i> | | | | | | | | |
| DAVIE, A. | 26 | 3 | 2 | 4 | — | — | — | — |
| READ, A. | 6 | — | 3 | 14 | — | — | — | 1 |
| STARLING, A. | — | — | — | 13 | — | — | — | — |
| <i>Full Backs</i> | | | | | | | | |
| BANNISTER, J. | 30 | 3 | 5 | 1 | — | — | — | — |
| DOUGAN, M. | 6 | — | 3 | 5 | — | — | — | 1 |
| HOOPER, G. | — | — | — | 15 | — | — | — | — |
| JARDINE, F. | 7 | 1 | — | 20 | — | — | — | — |
| RYAN, J. | 22 | 3 | 2 | 8 | — | — | — | — |
| SHANKS, D. | — | — | — | 4 | — | — | — | — |
| LOVERIDGE, D. | — | — | — | 7 | — | — | — | — |
| <i>Half Backs</i> | | | | | | | | |
| BRANSTON, T. | 6 | 2 | 5 | 17 | — | — | 1 | — |
| DELGADO, A. | — | — | — | 3 | — | — | — | — |
| KEEN, M. | 32 | 3 | 5 | — | 2 | — | — | — |
| GUILD, A. | — | — | — | 25 | — | — | — | 4 |
| MOORE, J. | 9 | — | 1 | 18 | — | — | — | — |
| NICHOLL, C. | 27 | 1 | — | 2 | 2 | — | — | — |
| SLOUGH, A. | 31 | 3 | 5 | 2 | 2 | — | — | — |
| THOMPSON, P. | — | — | — | 2 | — | — | — | — |
| WAINWRIGHT, R. | — | — | — | 23 | — | — | — | — |
| <i>Forwards</i> | | | | | | | | |
| ALLEN, K. | 29 | 3 | 5 | 4 | 5 | — | 2 | 1 |
| BUSBY, V. | — | — | — | 6 | — | — | — | 3 |
| COLLINS, J. | 29 | 3 | 3 | 3 | 9 | 2 | — | 1 |
| FRENCH, G. | 31 | 3 | 5 | 1 | 4 | — | — | — |
| HARRISON, M. | 6 | 1 | — | 17 | 2 | — | — | 6 |
| LEWIS, B. | 6 | — | 2 | 8 | — | — | 2 | 4 |
| MacDONALD, M. | 32 | 3 | 5 | 2 | 17 | 1 | 2 | 4 |
| PHILLIPS, P. | 4 | — | — | 23 | — | — | — | 13 |
| SHEFFIELD, L. | 6 | — | 5 | 6 | — | — | 2 | 4 |
| STEVENSON, M. | — | — | — | 7 | — | — | — | 2 |
| TEES, M. | 26 | 3 | 1 | 1 | 11 | 2 | — | — |
| SPARKES, N. | — | — | — | 2 | — | — | — | — |
| TUFFS, R. | — | — | — | 1 | — | — | — | — |
| ADAIR, K. | — | — | — | 1 | — | — | — | — |
| LEE, R. | — | — | — | 3 | — | — | — | — |
| HIPWELL, R. | — | — | — | 16 | — | — | — | — |
| FOSSEY, P. | — | — | — | 10 | — | — | — | 1 |
| SORBIE, R. | — | — | — | 4 | — | — | — | — |
| OPPONENT | — | — | — | — | 1 | — | — | 1 |
| AMATEURS | — | — | — | 4 | — | — | — | — |

FL — Football League; FAC — FA Cup; FLC — Football League Cup; FC — Football Combination

Coming Matches

FOOTBALL COMBINATION

SATURDAY, 7 MARCH

LUTON TOWN v OXFORD UNITED

KICK-OFF 3 p m

TUESDAY, 10 MARCH

LUTON TOWN v IPSWICH TOWN

KICK-OFF 7.30 p m

Prices of admission

Enclosure 2s 6d (children 1s 6d), Stand seats 6d extra.

DIVISION III

SATURDAY, 14 MARCH

LUTON TOWN v MANSFIELD TOWN

KICK-OFF 3 p m

TUESDAY, 17 MARCH

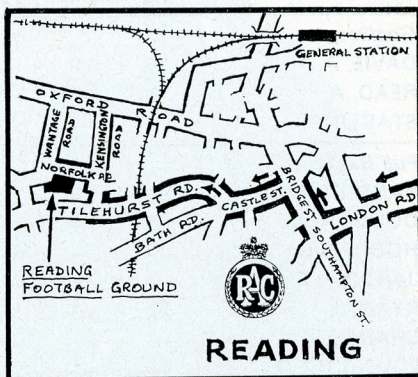
LUTON TOWN v BURY

KICK-OFF 7.30 p m

Prices of admission

Centre Stand 10s, Wing Stand 8s, Enclosure, Bobbers Stand and Oak Road terrace 6s. (children 3s), Kenilworth Road terrace 5s (children 2s 6d).

HOW TO GET THERE

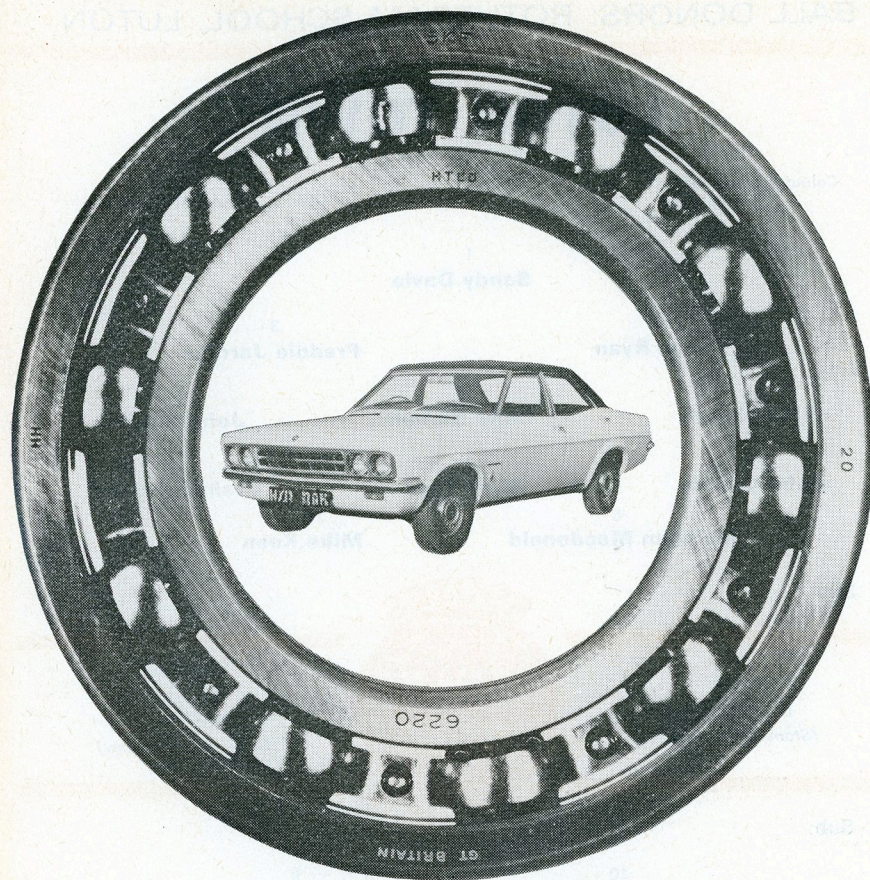


READING v LUTON TOWN WEDNESDAY, 11 MARCH

Kick-off 7.30 p m

LUTON

Join A505 to:
 Dunstable 5 miles
 B489 for 2½ miles where
 turn L, B4506 to:
 Northchurch 16 miles
 Turn L to Berkhamsted
 Turn R, A416 to:
 Chesham 24 miles
 Amersham
 Follow sign
 'Beaconsfield 473'
 Beaconsfield 29 miles
 Turn R along A40, passing
 roundabout and continue to
 traffic lights, when
 Turn L, B4490
 Wooburn, join A4094
 Bourne End 33 miles
 Follow signs 'A4155 Marlow'
 Marlow 37 miles
 Turn L, A404 and cross
 Marlow Bridge
 Join A4 and follow signs to:
READING 51 miles
 (See Plan)

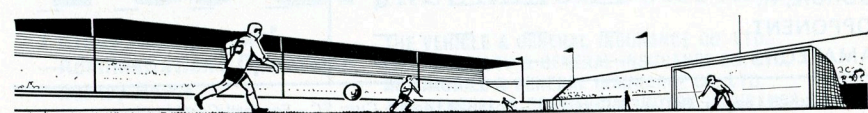


New 1970 range by Vauxhall

bearings by Skefko

SKF

The Skefko Ball Bearing Company Limited
 Luton, Bedfordshire



BALL DONORS: ROTHERAM SCHOOL, LUTON

LUTON TOWN

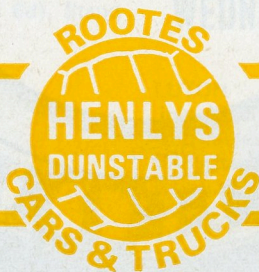
Colours: Shirts White
Shorts Black

Coach: JIMMY ANDREWS

| | | |
|---------------------|--------------------------|------------------------|
| | 1 | |
| | Sandy Davie | |
| 2 | | 3 |
| John Ryan | | Freddie Jardine |
| 4 | 5 | 6 |
| Alan Slough | Chris Nicholl | John Moore |
| 7 | 9 | 11 |
| John Collins | Matt Tees | Graham French |
| | 8 | 10 |
| | Malcolm Macdonald | Mike Keen |

Sub:

Referee
D. W. SMITH
(Stonehouse, Glos.)



Linesmen
R. J. Byatt (*Enfield*)
Red flag
T. G. Bune (*Camberley*)
Yellow flag

Sub:

| | | | |
|----------------------|----------------------|--------------------|-----------------------|
| | 10 | | 8 |
| | Joe Pritchard | | Roy Mathias |
| 11 | | 9 | 7 |
| Paul Crossley | | Ken Beamish | Dave Kennedy |
| 6 | | 5 | 4 |
| Allan King | | Tony Knapp | Dave Moorcroft |
| | 3 | | 2 |
| | Frank Gill | | Dave Griffiths |
| | | 1 | |
| | | Frank Lane | |

Colours: Shirts Blue with White Edgings
Shorts White

Manager: DAVE RUSSELL

TRANMERE ROVERS

Result: LUTON TOWN

TRANMERE ROVERS