



# LUTON TOWN

## FOOTBALL CLUB

Telephone: Luton 23151



DIVISION III

Tuesday 17 March 1970 Kick-off: 7.30 p m

# v BURY

Official Programme: Price 1/-

## FIXTURES 1969-70

### DIVISION THREE

Date	Opponents	Attendance	Result
<b>August</b>			
Sat 9	<b>BARROW</b>	12,080 (H)	3-0
Wed 13	FLC1 Peterboro'	10,249 (A)	1-1
Sat 16	Bournemouth	9,735 (A)	1-0
Tues 19	FLC1 <b>PETERBORO'</b>	13,105 (H)	5-2
Sat 23	<b>ORIENT</b>	13,761 (H)	3-2
Tues 26	<b>HALIFAX T.</b>	13,759 (H)	1-1
Sat 30	Gillingham	7,792 (A)	2-0
<b>September</b>			
Tues 2	FLC2 <b>MILLWALL</b>	17,372 (H)	2-2
Sat 6	<b>BRISTOL R.</b>	15,198 (H)	4-0
Mon 8	FLC2 Millwall	14,125 (A)	1-0
Sat 13	Bradford City	10,851 (A)	1-1
Tues 16	Southport	4,003 (A)	3-0
Sat 20	<b>SHREWSBURY</b>	15,396 (H)	2-2
Tues 23	FLC3 Sheffield U.	16,884 (A)	0-3
Sat 27	Plymouth Argyle	14,111 (A)	3-1
Tues 30	Walsall	7,557 (A)	3-1
<b>October</b>			
Sat 4	<b>STOCKPORT</b>	15,944 (H)	2-0
Tues 7	<b>BOURNEMOUTH</b>	18,065 (H)	0-0
Sat 11	Doncaster Rovers	17,380 (A)	0-2
Sat 18	Brighton & H.A.	18,722 (A)	2-1
Sat 25	<b>TORQUAY U.</b>	16,087 (H)	1-1
<b>November</b>			
Sat 1	Rotherham U.	8,727 (A)	1-1
Sat 8	<b>BARNSELY</b>	17,442 (H)	1-1
Sat 15	FAC1 Bournemouth	7,362 (A)	1-1
Tues 18	FAC1 <b>BOURNEMOUTH</b>	13,384 (H)	3-1
Sat 22	<b>ROCHDALE</b>	15,876 (H)	2-0
Tues 25	<b>FULHAM</b>	16,485 (H)	1-0
<b>December</b>			
Sat 6	FAC2 Hillingdon	9,333 (A)	1-2
Sat 13	<b>BRADFORD C.</b>	11,857 (H)	5-0
Fri 26	Orient	17,619 (A)	0-1
Sat 27	<b>GILLINGHAM</b>	17,402 (H)	1-2
<b>1970</b>			
<b>January</b>			
Sat 10	Shrewsbury Town	4,206 (A)	1-5
Sat 17	<b>PLYMOUTH A.</b>	12,358 (H)	0-2
Sat 24	Bury (4)	6,893 (A)	3-1
Sat 31	Stockport County	3,922 (A)	1-1
<b>February</b>			
Sat 7	<b>DONCASTER (5)</b>	12,876 (H)	4-0
Tues 10	Bristol Rovers	13,297 (A)	0-3
Sat 14	Barrow	3,843 (A)	1-2
Sat 21	Torquay United (6)	6,819 (A)	2-2
Sat 28	<b>BRIGHTON</b>	17,584 (H)	1-1
<b>March</b>			
Tues 3	<b>TRANMERE R.</b>	11,368 (H)	2-0
Wed 11	Reading	18,783 (A)	1-0
Sat 14	<b>MANSFIELD (SF)</b>	12,690 (H)	2-2
Tues 17	<b>BURY</b>	(H)	
Sat 21	Tranmere Rovers	(A)	
Fri 27	<b>ROTHERHAM U.</b>	(H)	
Sat 28	<b>READING</b>	(H)	
Mon 30			
Tues 31	Barnsley	(A)	
<b>April</b>			
Sat 4	Halifax Town	(A)	
Mon 6	<b>BEDFORD TOWN</b> .. Beds. Pro. Cup Final	(H)	
Wed 8	Fulham	(A)	
Sat 11	<b>WALSALL (7.30 p m)</b>	(H)	
Tues 14	<b>SOUTHPORT</b>	(H)	
Mon 20	Mansfield	(A)	
Sat 25	Rochdale	(A)	

### FOOTBALL COMBINATION

Date	Opponents	Attendance	Result
<b>August</b>			
Sat 16	<b>PETERBORO'</b>	1,326 (H)	4-2
Sat 23	Norwich City	(A)	0-0
Sat 30	<b>TOTTENHAM H.</b>	1,683 (H)	2-2
<b>September</b>			
Sat 6	Gillingham	(A)	2-3
Sat 13	<b>BOURNEMOUTH</b>	1,124 (H)	3-3
Tues 23	Northampton Town	(A)	1-5
Sat 27	<b>SWINDON T.</b>	1,306 (H)	2-0
<b>October</b>			
Wed 1	Crystal Palace	(A)	1-2
Sat 11	<b>BIRMINGHAM</b>	1,309 (H)	1-2
Sat 25	Tottenham H. (Cup)	(A)	1-3
<b>November</b>			
Sat 1	<b>SOUTHAMPTON</b>	1,239 (H)	5-3
Tues 4	Queens Park Rangers	(A)	5-1
Sat 8	Leicester City	(A)	0-4
Sat 22			
<b>December</b>			
Sat 13	Bristol Rovers	(A)	1-1
Tues 16	<b>BIRMINGHAM (Cup)</b>	491 (H)	3-0
Sat 20	Arsenal	(A)	0-5
Sat 27	Northampton (Cup)	(A)	2-2
Tues 30	Walsall (Cup)	(A)	
<b>1970</b>			
<b>January</b>			
Sat 3	<b>LEICESTER C (Cup)</b>	742 (H)	0-4
Mon 12	<b>WALSALL (Cup)</b>	619 (H)	1-1
Sat 17	Plymouth Argyle	(A)	0-1
Tues 20	<b>TOTTENHAM (Cup)</b>	1,046 (H)	0-2
Sat 24	<b>READING</b>	739 (H)	2-0
Tues 27	Birmingham (Cup)	(A)	1-2
Sat 31	<b>N'HTON (Cup)</b>	1,006 (H)	4-1
<b>February</b>			
Sat 7			
Mon 16	<b>CHELSEA</b>	1,907 (H)	1-0
Sat 21	<b>SWANSEA T.</b>	937 (H)	3-1
Wed 25	Cardiff City	(A)	0-3
Sat 28			
<b>March</b>			
Sat 14			
Sat 21	West Ham United	(A)	
Mon 23	Leicester C.	(A)	
<b>April</b>			
Thurs 2	Fulham	(A)	
Sat 4	<b>BRISTOL C.</b>	(H)	
Wed 15	<b>OXFORD U.</b>	(H)	
<b>To be re-arranged</b>			
	<b>Walsall</b>	(A)	
	<b>Ipswich</b>	(H)	

© Football League Ltd, 1969

Published by

Luton Town Football and Athletic Company Limited,  
Kenilworth Road, Luton.

Printed by

White Crescent Press Limited, Crescent Road, Luton.  
Telephone Luton 23122



## LUTON TOWN FOOTBALL AND ATHLETIC CO, LTD

KENILWORTH ROAD, LUTON, BEDFORDSHIRE  
TELEPHONE 0582 23151

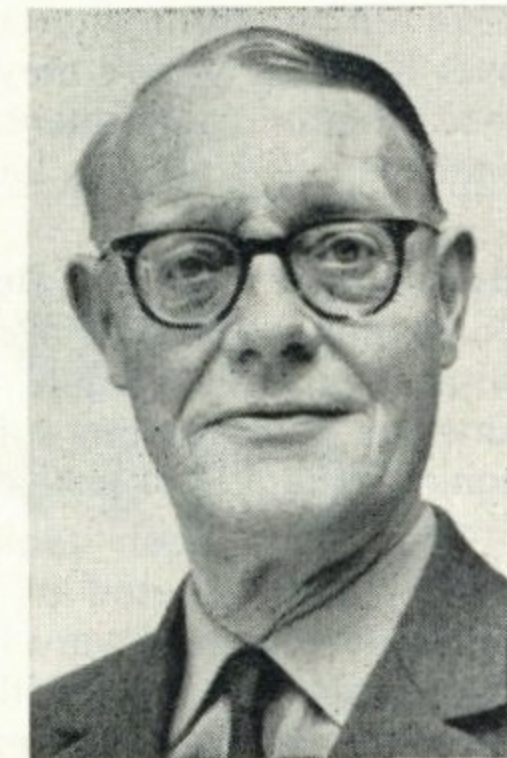
Established 1885 Incorporated 1897  
First Professional Side Season 1891-1892  
Football League Division III Champions 1936-37  
Football League Division II Runners-up 1954-55  
FA Challenge Cup Finalists 1958-59  
Football League Division IV Champions 1967-68

OFFICIAL  
PROGRAMME  
17 MARCH  
1970

New Series  
Vol. 1 No. 25

Directors: A. T. HUNT, *Chairman*, L. S. HAWKINS, *Vice-Chairman*,  
J. A. C. BAIN, R. I. BURR, T. HODGSON,  
ERIC MORECAMBE, H. RICHARDSON  
Chief Executive and Manager: Alec Stock Secretary: R. Readhead  
Hon Medical Officers: Dr C. J. Buckingham, MB, BS and  
Dr P. J. Burrows, MB, BCh, DObst, RCOG  
Hon Dental Surgeon: A. Hargreaves, Esq  
Hon Solicitor: E. Waller, Esq Auditors: Messrs Keens, Shay, Keens & Co

*Eric Pugh's Page*



Loss of yet another home point, to Mansfield last Saturday, the sixth that has gone astray in the last six matches at Kenilworth Road, can only be regarded as most disappointing.

The more so in that the chances were there, particularly in the first half, for the taking, and with a normal rate of acceptance, the result could have been placed beyond dispute by the interval.

### Finishing was inaccurate

However, the work in front of goal was not impressive and although a certain amount of bad luck was experienced, lack of accuracy in finish, was the real reason for the partial failure.

Trouble is that, the loss of home points in this way, puts extra strain and onus on the results of away games.

On opponents' grounds, apart from one spell recently, the Town have been more consistent than before their own fans which is something which takes some understanding.

### Results came wrong way around

Had someone predicted before last week's games that the Town would earn three points, they would have been reasonably well satisfied that that should be the outcome.

However, the disappointment came in that they gave one of their best displays in winning at Reading which fully restored their promotion chance and the stage was set for a hammering of the moderate Mansfield side.

Things did not turn out that way and, at half-time they were struggling along

uncertainly with a goal from John Ryan, his second valuable effort in consecutive home games.

#### **Early second half goal rush**

Even so, no one was prepared for what amounted to a goal rush at the start of the second half, least of all, for Mansfield scoring twice during it.

Even after that ended, and the scores were level at 2-2, the Town still had the chances to win, but the finish just continued to be missing and even the belated introduction of Keith Allen as substitute striker for Matt Tees, could not bring the desired effect.

#### **Promotion issue is wide open**

Of course, the promotion issue is wide open, but the plain fact is that the Town, if they wish to be concerned in the final reckoning – and they certainly intend to be – must cease being so benevolent to their opponents.

Chance to re-adjust the balance to some extent comes tonight when they have the opportunity to complete a double over Bury, for whom they reserved one of their better performances when they beat them 3-1 at Gigg Lane.

#### **One bright spot for Bury**

There has been just one bright spot in what has been largely a disappointing time for Bury, who suffered relegation again at the end of last season.

They have been prolific scorers and seem almost assured of a place in what can prove to be a very lucrative Watney sponsored new competition to be played before the start of next season.

#### **Have let in too many goals**

Unfortunately for them, while their forwards and George Jones and Jimmy Kerr, in particular, having been banging in the goals, the men at the back have been letting them in with depressing frequency.

As a result, Bury have never mounted the promotion challenge they hoped for and they are anchored in the lower half of the division without, though, being in any danger of a further drop.

#### **No dramatic late bid by Town**

As these notes were being written a few hours before the deadline for transfers to

be effective this season, it looked certain that the Town would not emerge as dramatic buyers.

At one time during the weekend, this seemed a possibility but, after careful consideration of the players who might be available, Manager Alec Stock decided that he would take his chance with the players on his staff.

There seemed to be, late last week, some prospect of a deal with Ipswich Town, involving Graham French, but Stock was not satisfied that the player or players available to him, would compensate for the loss of this clever winger.

#### **Stock turned it down**

To make a final check, the manager missed the Town's match on Saturday to watch Ipswich at West Ham, but did not take long to decide that he was not interested in the project.

That there have been earnest and varied attempts to increase the playing staff, I have no doubt whatever. In the case of David Court, who could have been just the man to clinch the promotion prize, the Town found the demands of the Arsenal player far too high and there was no sign that he would be willing to reduce the terms he was asking to make the move.

#### **£30,000 fee was agreed upon**

Just how high the Town were aiming is shown by the fact that a fee of £30,000 had been agreed with Arsenal, but, these days, agreement between clubs is only the start of a transfer deal and the whole business is a deal more complicated than it used to be.

#### **Tranmere have tried to buy**

On Saturday, the Town are due at Tranmere, who have also been making urgent attempts to increase their playing strength.

After their defeat at Southport on Saturday, Tranmere look doomed to relegation, but they will not yield anything to the Town without a fight.

#### **OUR COVER PICTURE**

John Collins, back in action against his former club, Reading, challenges during the Town's fine win over their promotion rivals last Wednesday.

*Picture: Luton News and Green 'Un.*

# CONNELLS

Auctioneers, Surveyors  
Valuers and Estate Agents

*5, Upper George Street, Luton*

Telephone: 31261 for

## Houses and Bungalows

COUNTRY HOUSES, COMMERCIAL AND  
INDUSTRIAL PREMISES, COMPULSORY  
PURCHASE NEGOTIATIONS IN

*Luton and Surrounding Districts*

Branch Offices throughout

HERTFORDSHIRE, BEDFORDSHIRE, BUCKINGHAMSHIRE  
and at 62, GROSVENOR STREET, LONDON, W.1.



## THE ONE STOP SHOPPING CENTRE for

Hardware, Electrical, Men's Wear, Fuel, Catering,  
Footwear, Bookshop, Drapery, Furnishing, Toys &  
Sports, Grocery, Greenfruit and Butchery with Credit  
Facilities to suit your requirements.

PLUS DIVIDEND STAMPS

### SUPERSTORE

4 NEW BEDFORD ROAD

LUTON. Tel: 21171

**LUTON CO-OPERATIVE SOCIETY LTD**



*From Bob's Office*



Bob Readhead, Secretary

An extra attraction on this ground next Saturday will be the replayed Amateur Cup semi-final between St Albans City and Dagenham Town, who drew their first meeting at Millwall last Saturday.

This is the first time we have had the honour of staging a match of this description, though we would have done so last season had one of the semi-finals been drawn and we hope that there will be a big attendance.

#### Youth League Cup final put back

As a result of this, the Chiltern Youth League Cup final between Limbury OB and Vauxhall Motors which should have been at Kenilworth Road next Saturday, has been put back to the following Monday (7.30 p.m).

Prices of admission for the Amateur Cup-tie, as fixed by the Football Association, are the same as we charge for League matches and centre stand seats at 10s each are bookable in advance.

Between them, the semi-finalists have already asked for 1,500 of these, so that is a good start towards the takings.

#### Difficult to find dates

More difficulty than usual seems to have been experienced this season in finding dates for the various Cup Finals and representative matches that are usually played at this time of the year.

In order to give groundsman, Eddie Hartley, and his staff every chance in the work of renovation during the close season, it has been decided that the last match to be played here will be the Bedfordshire Senior Cup final on 18 April.

This will be between Leighton Town and the winners of Arlesey Town and Totternhoe.

#### Two cup finals arranged

On Easter Monday (3 o'clock), the Luton and South Beds League will be staging their League Cup final between Brache Sparta, the holders, and 61 FC.

The Home Counties Sunday League will stage theirs here on the following Wednesday (7.30 p.m). In their case, they have not arrived at the stage yet at which they know who their finalists are.

#### Have a try in this competition

Our last competition which posed the question, 'How many Laws are there in the game of Association Football?' was won by Mr W. A. Willsmore, 18 Meadway, Welwyn Garden City, who receives a watch as his prize. The answer was seventeen and Mr Willsmore's was the first correct one opened.

This week's competition: 'What is the name of a Luton centre-forward named 'Hugh', who joined a First Division club and then, for a spell, after finishing with the game, became a licensee?'

Entries must be accompanied by a fee of sixpence and the prize will be a lady's or gentleman's watch.

#### Collection for the old folk

At our next home game, against Rotherham United on Good Friday, a collection will be taken outside the ground by volunteers from Luton Round Table.

Object is to enable the welfare services of Luton to take the old folk for a week's holiday at Warners Holiday Camp, Hayling Island.

Cost will be approximately £400 and it is hoped that everyone will contribute generously to enable our senior citizens to have an enjoyable holiday.

# Outside-right. Inside-right.



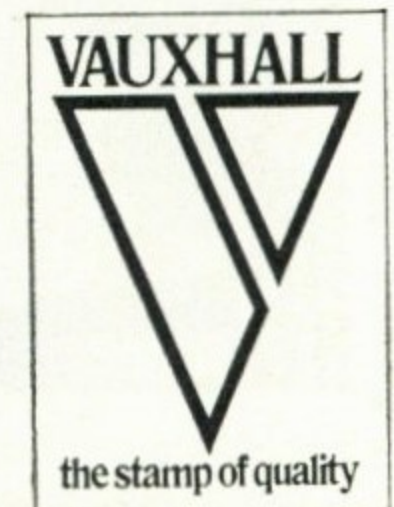
What makes Viva the 1-litre league leader?

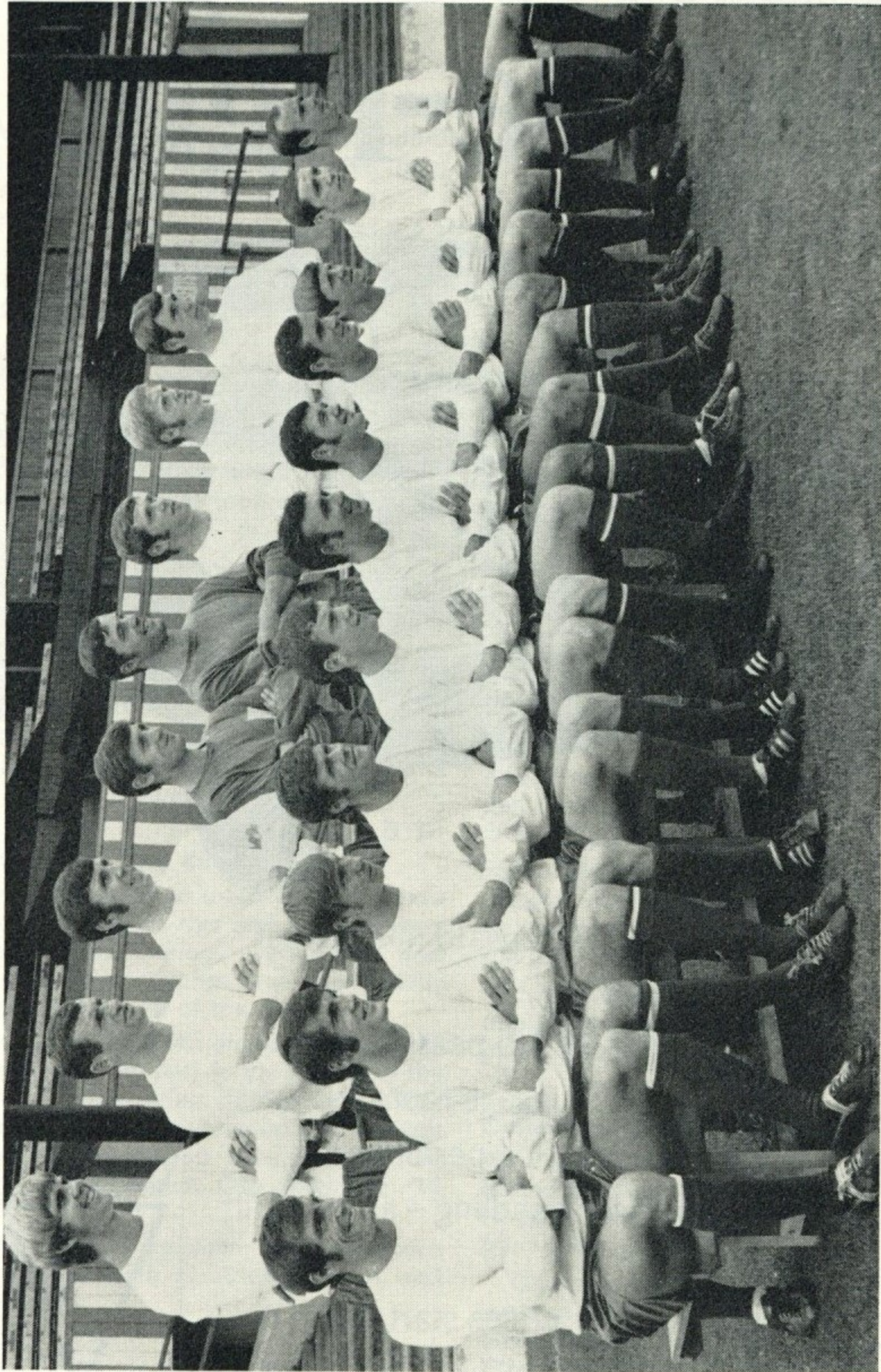
**The shape.** The forward line's great – so is the back.

**The space.** Full 4/5 passenger comfort – and luggage-room to match!

**The pace.** All-action performance, with sports-car handling – and in-built safety.

**The price.** Viva prices start at £701. And there are 20 all-star performers to choose from. Why don't you join the Viva supporters club?





Back row: D. Lyon, G. Jones, H. Tinney, J. Forrest, N. Ramsbottom, K. Eccleshare, A. Rae, M. Saile  
 Front row: B. Turner, G. Farrell (now in S. Africa), P. Hince, A. Arrowsmith, R. Hughes, R. Parnell, B. Grundy, B. Anderson, I. Towers, J. Kerr, R. Parry  
 Picture by permission of *The Bury Times*

## No quick return this time for up-and-down Bury *By Tony Pullein*

It seems that Bury's up-and-down existence of recent years is about to come to a temporary halt.

Relegated from Division II in 1967, they regained their place at the first attempt, only to lose it again within twelve months.

This time there is to be no immediate return to the Second Division though, come to think of it, there is still a chance – following a recent run of four consecutive defeats – that they could find themselves relegated again this season!

### Relying heavily on these two

It's unlikely that fate will befall the Shakers but, for their own peace of mind, they are hoping their dual strikers George Jones and Jimmy Kerr will continue to rap home the goals to pull them well clear of trouble.

Before Saturday's game, this pair had scored forty goals between them.

Jones, a former England youth international, was first introduced to League football by Bury in 1961–62 when he was 17. After three years in the senior side, he moved to Blackburn who were then in Division I, but he didn't really settle there and returned to his old club in 1966.

### Most successful term so far

George was Bury's top scorer with eleven goals last season but this is his most successful campaign to date. He had scored twenty-one times before the weekend, including a hat-trick against Rotherham and four against Tranmere Rovers.

That latter performance equalled his best match achievement – two years ago he cracked four into Bournemouth's net.

### Kerr well among goals too

Glasgow born Jimmy Kerr joined Bury as a 15-year-old amateur five years ago and he was only 16 when he got his League debut against Norwich in September 1965.

He has held a regular place for the past three seasons and he, too, is enjoying his best goal-scoring campaign – he has 18.

Alf Arrowsmith spent the best part of a decade with Liverpool but found his first-team chances limited – in spite of the fact that he hit four goals on his debut in an FA Cup tie. He joined Bury last season and has scored nine goals this term.

### Vain attempt

Paul Hince had difficulty breaking into Manchester City's team but had better luck following his transfer to Charlton

in 1968. He moved again last season when Bury snapped him up in what proved a vain effort to help avoid relegation.

Brian Grundy took part in one of those fairy tale rises from obscurity to fame. Two seasons ago he kicked off with Wigan Athletic in the Cheshire League but impressed Bury so much that they signed him in November 1967 and put him almost immediately into their first-team.

### Ramsbottom is a former junior

Goalkeeper Neil Ramsbottom developed in Bury's junior teams, making the League XI in 1965–66. Two seasons ago he missed only one match but last season he shared the green jersey with another local lad, John Forrest. But he has re-established himself again this season.

Ramsbottom is one of several local discoveries in defence. Roy Hughes got his first League game two seasons ago but has not yet really played himself into a regular place. Michael Saile and David Lyon both came in last season, Lyon for the final game of the season.

### Has had over 400 league games

Another Bury find, Brian Turner, is now the club's longest-serving player, having completed well over 400 league games for them. Now he looks set to beat the club record of 453 set by Bill Amos between the wars.

Ben Anderson was considered a forward in his Blackburn days but since making the journey across to Gigg Lane in 1968 he has been transformed into a solid defender. Hugh Tinney arrived from Partick Thistle three years ago, holding down a fairly regular place since.

Our League record versus Bury is:

	P	W	D	L	F	A	Pts
Home	13	11	1	1	30	13	23
Away	14	5	1	8	22	29	11
	27	16	2	9	52	42	34

Luton's leading newsagents

# HOUGHTONS

CONFECTIONERS · TOBACCONISTS  
GREETINGS CARD SPECIALISTS

- ★ 16 The Parade, Hill Rise
- ★ 3 Ashwell Parade, Sundon Park
- ★ 82 Putteridge Road, Stopsley
- ★ 253 Birdsfoot Lane
- ★ 150 Sundon Park Road
- ★ Jansel House, Stopsley
- ★ 217 Dunstable Road
- ★ 178 Ashcroft Road, Stopsley
- ★ 8 Hillborough Crescent, Houghton Regis

*Whenever you are near  
— pay us a visit  
We will be pleased  
to serve you*

buy your  
EVENING **POST**  
with full-time  
results outside  
the ground  
after the match



## RICHARDSON and BOTTOMS

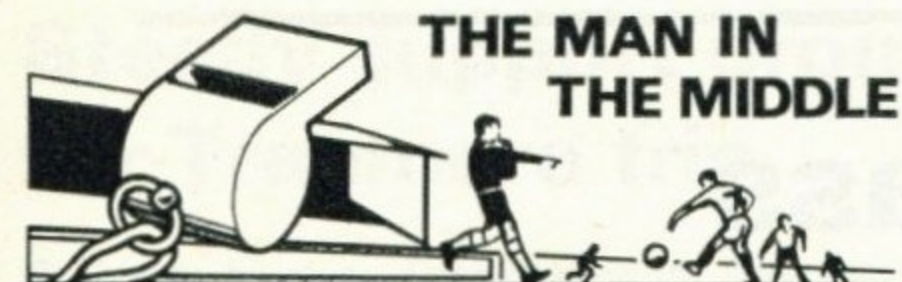
LIMITED

*Builders  
and  
Contractors*

107, BISCOT RD.

Luton

Telephone: 25628



### BRIAN DANIELS (Rainham)

We never expected to find Twiggy refereeing one of our Football League games. But we shall have that pleasure tonight for that's the unlikely nickname soccer fans have given to **BRIAN DANIELS**.

'It must be somewhat unusual for an ex-military policeman to have that nickname bestowed upon him', he smiled.

Mr Daniels took up refereeing in 1951 'to fulfil a childhood ambition'. He worked

his way through various local leagues, then onto the Athenian and Isthmian Leagues.

### Referees' secretary

He became a Football League linesman in 1965, two years before he won promotion to the 'middle'. A former secretary of Ilford Referees' Society, he holds several offices in soccer.

He is vice-president of the Ilford seven-a-side competition and holds a similar position with the South-East Essex Charity Cup competitions.

Married with two young sons, Mr Daniels lives at Rainham, Essex, and is employed as a security courier. His hobbies include ballroom dancing, coarse fishing, football... 'and yet more football'!

## PERSONALITY PROFILE

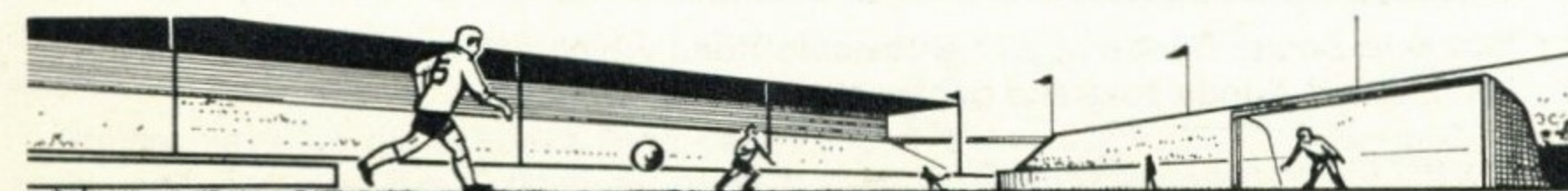
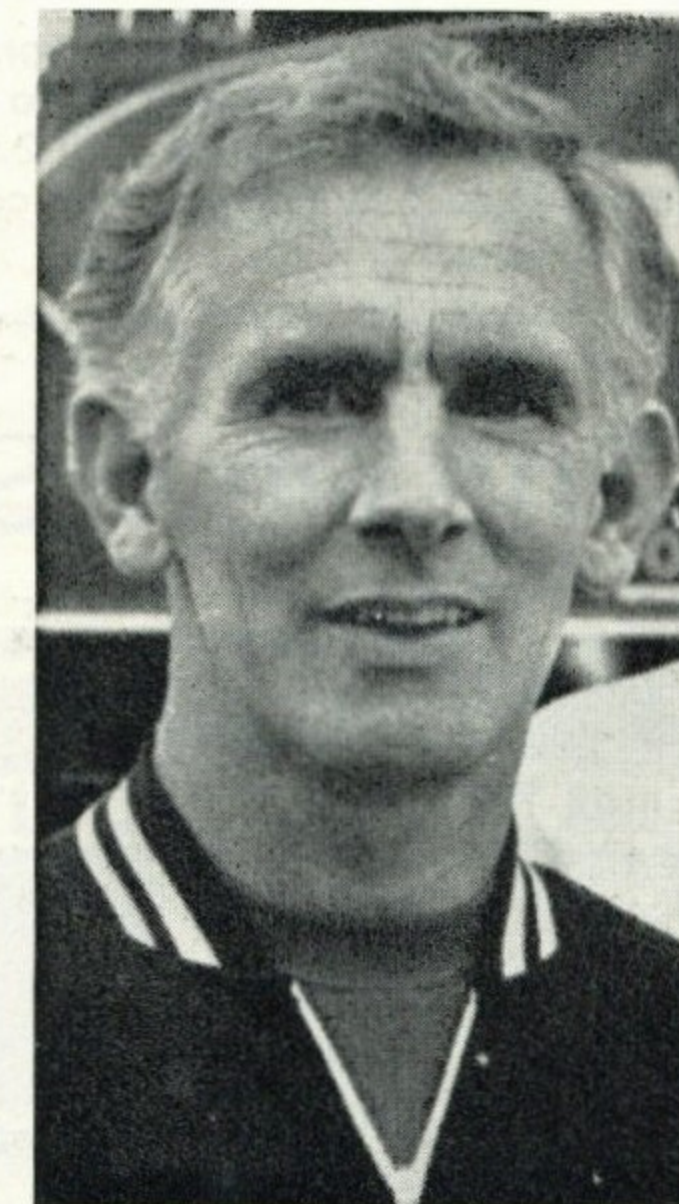
### 23 JIMMY ANDREWS

Is acknowledged to be one of the top coaches in the country, having served Q.P.R., Chelsea and Coventry City in that capacity before joining the Town just over twelve months ago.

This is the third time he has been associated with Manager Alec Stock because he was under him as a player with the then Leyton Orient, and was coach and then team manager at Queen's Park Rangers during Stock's highly successful reign at Loftus Road.

When Andrews and Coventry parted company, Stock was quick to step in with an offer and there has been no doubt about his influence on the players.

As a player, Jimmy was a highly accomplished outside-left, with a deadly left foot, with West Ham United and Orient.



# Two in a class of their own



Comfort for all manner of functions – that is the motto of the new, luxurious Hatters' Club which is proving so popular.

Today, the club is open until 2.55 p m for drinks and snacks and re-opens from 4.45 to 5.30 p m and then continuously from 6 o'clock until 11.30 p m.

## The New Sports Centre



Our new Sports Centre at 231 Dunstable Road which offers a comprehensive list of sports goods, toys and games at competitive prices.

## Steady support promised for Tranmere trip

By Harry Haslam, Entertainments Manager

There is every evidence that our next special train, to Tranmere on Saturday, will be well supported and the timings are such that they are convenient to all.

It is not necessary for the trip to start until 9.40 a m, with a call at Bedford twenty-four minutes later, and arrival at Rock Ferry Station, ten minutes from the Prenton Park ground being timed for 1.36 p m.

### Fare is most reasonable

Return journey begins at 5.55 p m, arriving Bedford 9.16 and Luton 9.42 p m. Return fare is £1 5s which can only be regarded as most reasonable.

Before the season ends, there will definitely be two other special trains, to Halifax on 4 April, and to Rochdale three weeks later.

### Barnsley is under consideration

Question of whether it will be possible to run one to Barnsley on Easter Tuesday when the kick-off will be in the evening, is under consideration.

Final decision will depend on the probable demand for tickets and the matter of whether suitable timings can be arranged.

### SUPPORTER OF THE WEEK

**PHILLIP CREAMER**, 10 years old, 196 Pointers Road, Luton. Has only missed one home game this season, and has been to Gillingham, Orient, Reading, Swindon, Mansfield and Northampton to see Luton play.

Phillip says, 'Keith Allen is my favourite player, but I want to be a goal-keeper like Sandy Davie.'

'My granddad is 79 years old, and still comes to see Luton play when he gets a ticket from Vespa, or when he comes with Dad, Mum and me. He is nearly blind, but likes to hear the crowd when Luton score.'

Phillip plays for his school's third year team and for his Boys Brigade team.



He says, 'I have Joe Payne's autograph, which my dad got when he was a boy. Good luck to Luton.'

### TODAY'S MASCOT

**DAVID TOBIN**, 6 years old, of 29 St Martin's Avenue, Round Green, Luton. Please give him a cheer.

### LUTON TOWN FC POOL

#### LUCKY NUMBERS

**Saturday:** £20-39692; £15-17238; £5-45724; £5-07596; £2-36204; £2-19186; £1-28467.

**Monday:** £20-40855; £15-29663; £5-11089; £5-38847; £2-21318; £2-47641; £1-00513.

**Tuesday:** £20-12760; £15-05868; £5-38390; £5-01122; £2-34135; £2-18803; £1-37361.

**Wednesday:** £20-04395; £15-22591; £5-13344; £5-27286; £2-46107; £2-31251; £1-21775.

**Thursday:** £20-26219; £15-15402; £5-42863; £5-19472; £2-08709; £2-43018; £1-33582.

**Friday:** £20-10615; £15-06217; £5-25604; £5-23275; £2-32047; £2-03684; £1-16819.

### BONANZA WINNERS

Result of the Luton Town FC Bonanza Draw made at half time in the Luton v Tranmere match.

1st prize: watch – 0716

2nd prize: radio – 1394

3rd prize: watch – 1842

4th prize: radio – 0553

5th prize: Odeon Cinema tickets – 2804

6th prize: Odeon Cinema tickets – 2005



## LATEST RESULTS

# FOOTBALL LEAGUE

V

# SCOTTISH LEAGUE

AT COVENTRY

WEDNESDAY 18 MARCH 1970

KICK-OFF 7.30 p m

Tickets in advance are obtainable from: 'The Secretary, Coventry City FC, High-field Road, Coventry', as follows:

Main Stand and Sky Blue Stand 16s, 13s, 11s. Admission to ground (6s and 5s) will be by cash at the turnstiles.

### DIVISION III

#### Torquay United 2 Luton Town 2

*Davie; Ryan, Jardine; Slough, Nicholl, Moore; French, Macdonald, Tees, Keen, Harrison.*

Substitute: *Busby.*

Scorers: Harrison, Macdonald.

#### Luton Town 1 Brighton 1

*Davie; Ryan, Jardine; Slough, Nicholl, Moore; French, Collins, Macdonald, Keen, Harrison.*

Substitute: *Tees.*

Scorer: Macdonald (pen).

#### Luton Town 2 Tranmere Rovers 0

*Davie; Ryan, Jardine; Slough, Branston, Moore; Macdonald, Collins, Tees, Keen, French.*

Substitute: *Allen.*

Scorers: Macdonald, Ryan.

#### Reading 0 Luton Town 1

*Davie; Ryan, Jardine; Slough, Branston, Moore; Collins, Macdonald, Tees, Keen, French, (Allen).*

Scorer: Macdonald.

#### Luton Town 2 Mansfield Town 2

*Davie; Ryan, Jardine; Slough, Nicholl, Moore; Macdonald, Collins, Tees, (Allen), Keen, Harrison.*

Scorers: Ryan, Harrison.

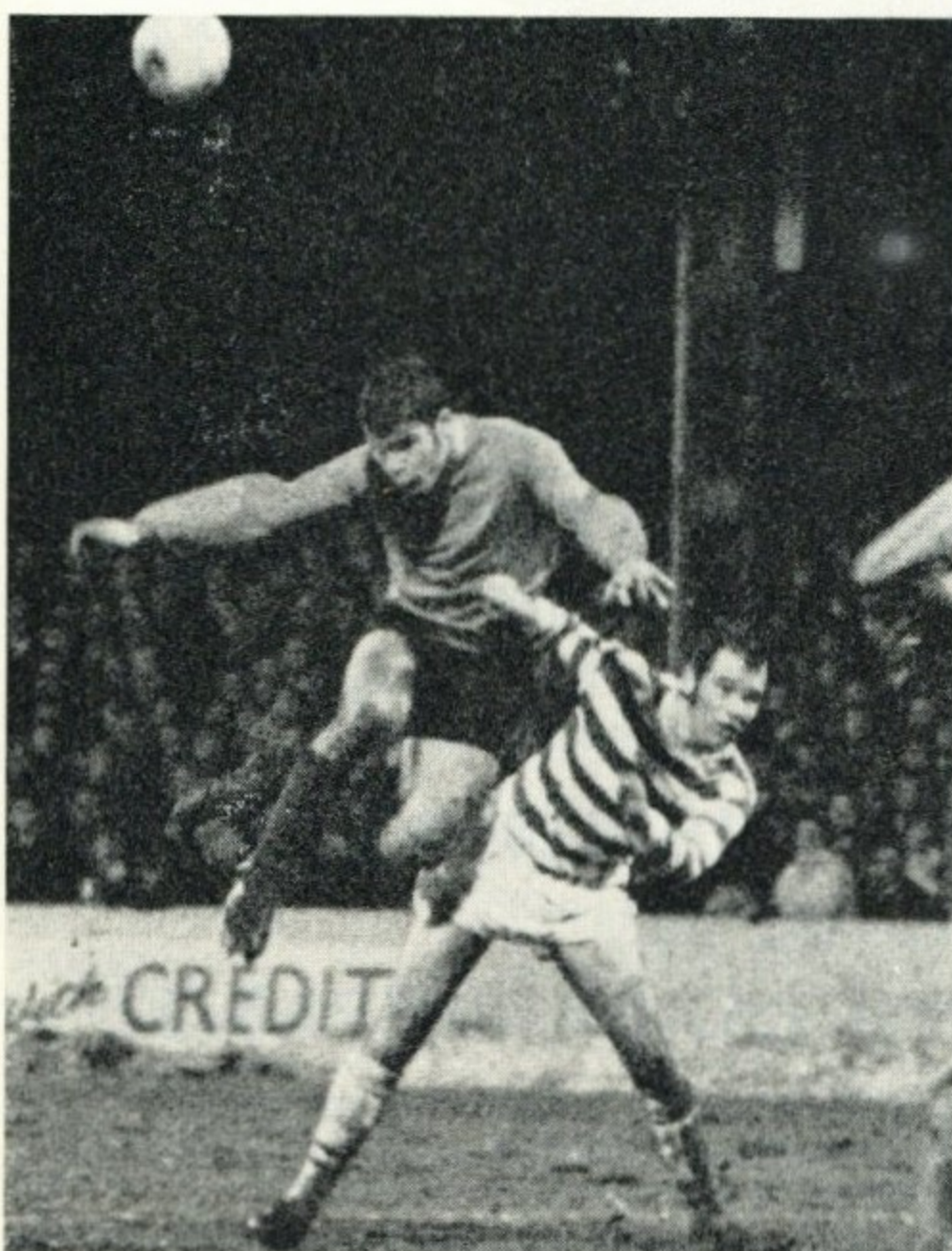


### HOW THEY STAND

#### DIVISION III

	P	W	D	L	F	A	P
Orient .. ..	34	18	11	5	49	25	47
Bristol Rovers .. ..	37	17	13	7	69	46	47
Brighton .. ..	38	19	9	10	48	32	47
<b>LUTON TOWN .. ..</b>	<b>35</b>	<b>17</b>	<b>11</b>	<b>7</b>	<b>60</b>	<b>36</b>	<b>45</b>
Reading .. ..	36	17	10	9	62	54	44
Barnsley .. ..	38	16	11	11	56	48	43
Bradford City .. ..	36	16	9	11	50	39	41
Torquay .. ..	36	12	14	10	51	46	38
Fulham .. ..	34	12	13	9	57	46	37
Rotherham United .. ..	37	12	13	12	52	42	37
Rochdale .. ..	35	15	7	13	54	45	37
Halifax Town .. ..	36	13	11	12	42	49	37
Mansfield Town .. ..	33	14	8	11	46	38	36
Shrewsbury Town .. ..	35	11	14	10	49	46	36
Doncaster Rovers .. ..	37	13	10	14	42	42	36
Plymouth .. ..	36	13	9	14	43	44	35
Bury .. ..	38	13	7	18	67	72	33
Southport .. ..	34	10	9	15	40	43	29
Walsall .. ..	32	11	7	14	34	49	29
Bournemouth .. ..	36	9	11	16	39	62	29
Barrow .. ..	39	7	12	20	35	65	26
Tranmere Rovers .. ..	33	7	10	16	37	63	24
Gillingham .. ..	33	8	6	19	36	52	22
Stockport County .. ..	36	5	9	22	22	56	19

Not including last night's matches



No need to ask who was the Town's main spearhead in their great win at Reading on Wednesday.

Malcolm Macdonald was the man who troubled the defence and here are typical action pictures of him harassing Reading.

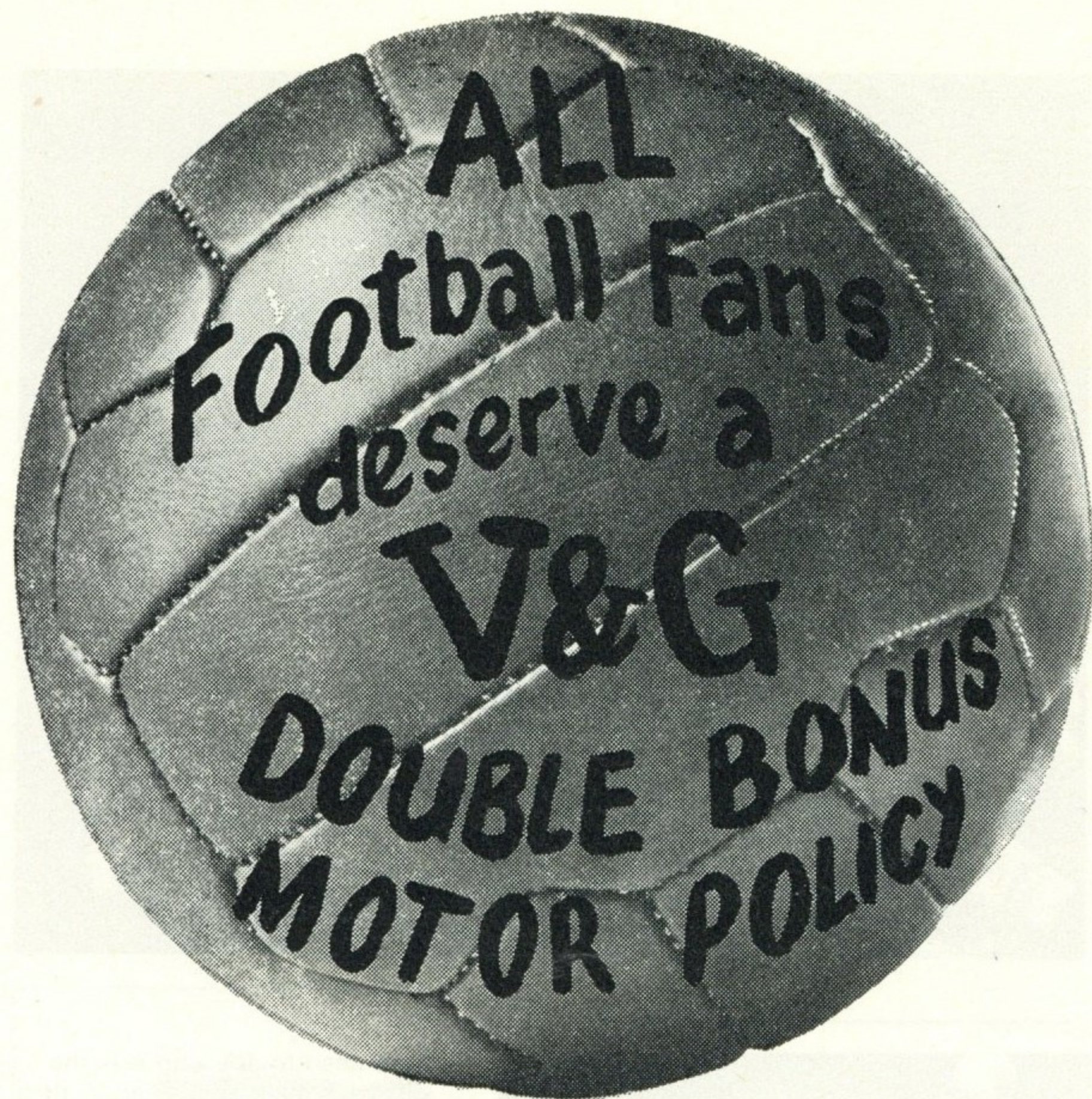
*Pictures: Luton News and Green 'Un.*



**WHITBREAD  
TANKARD**  
cool,  
clear, refreshing

Available in all Bars





**THE V&G  
DOUBLE BONUS  
MOTOR INSURANCE POLICY  
GIVES FAIRER TERMS  
TO EVERY DRIVER**

For further information contact your local officially appointed V & G Insurance Broker, or write or phone the address below.

**V&G** THE VEHICLE & GENERAL  
GROUP OF  
INSURANCE COMPANIES

Group Headquarters,  
Administration & Operations;  
Bushey House,  
High Street, Bushey,  
Hertfordshire.  
Tel: 01-950 4311.

THE VEHICLE & GENERAL INSURANCE CO. LTD.  
LIFE, CASUALTY & GENERAL INSURANCE CO. LTD.  
AUTOMOBILE & GENERAL INSURANCE CO. LTD.  
THE GENERAL & COMMERCIAL MOTOR INSURANCE CO. LTD.  
METROPOLITAN GENERAL INSURANCE CO. LTD.  
WORLD AUXILIARY INSURANCE CORPORATION LTD.  
PIONEER LIFE ASSURANCE CO. LTD.

	APPEARANCES				GOALS			
	FL	FAC	FLC	FC	FL	FAC	FLC	FC
<i>Goalkeepers</i>								
DAVIE, A.	29	3	2	4	—	—	—	—
READ, A.	6	—	3	14	—	—	—	1
STARLING, A.	—	—	—	13	—	—	—	—
<i>Full Backs</i>								
BANNISTER, J.	30	3	5	1	—	—	—	—
DOUGAN, M.	6	—	3	5	—	—	—	1
HOOPER, G.	—	—	—	15	—	—	—	—
JARDINE, F.	10	1	—	20	—	—	—	—
RYAN, J.	25	3	2	8	2	—	—	—
SHANKS, D.	—	—	—	4	—	—	—	—
LOVERIDGE, D.	—	—	—	7	—	—	—	—
<i>Half Backs</i>								
BRANSTON, T.	8	2	5	17	—	—	1	—
DELGADO, A.	—	—	—	3	—	—	—	—
KEEN, M.	35	3	5	—	2	—	—	—
GUILD, A.	—	—	—	25	—	—	—	4
MOORE, J.	12	—	1	18	—	—	—	—
NICHOLL, C.	28	1	—	2	2	—	—	—
SLOUGH, A.	34	3	5	2	2	—	—	—
THOMPSON, P.	—	—	—	2	—	—	—	—
WAINWRIGHT, R.	—	—	—	23	—	—	—	—
<i>Forwards</i>								
ALLEN, K.	31	3	5	4	5	—	2	1
BUSBY, V.	—	—	—	6	—	—	—	3
COLLINS, J.	32	3	3	3	9	2	—	1
FRENCH, G.	33	3	5	1	4	—	—	—
HARRISON, M.	7	1	—	17	3	—	—	6
LEWIS, B.	6	—	2	8	—	—	2	4
MacDONALD, M.	35	3	5	2	19	1	2	4
PHILLIPS, P.	4	—	—	23	—	—	—	13
SHEFFIELD, L.	6	—	5	6	—	—	2	4
STEVENSON, M.	—	—	—	7	—	—	—	2
TEES, M.	29	3	1	1	11	2	—	—
SPARKES, N.	—	—	—	2	—	—	—	—
TUFFS, R.	—	—	—	1	—	—	—	—
ADAIR, K.	—	—	—	1	—	—	—	—
LEE, R.	—	—	—	3	—	—	—	—
HIPWELL, R.	—	—	—	16	—	—	—	—
FOSSEY, P.	—	—	—	10	—	—	—	1
SORBIE, R.	—	—	—	4	—	—	—	—
OPPONENT	—	—	—	—	1	—	—	1
AMATEURS	—	—	—	4	—	—	—	—

FL - Football League; FAC - FA Cup; FLC - Football League Cup; FC - Football Combination

## Coming Matches

FA Amateur Cup, Semi-final Replay

SATURDAY, 21 MARCH

**ST ALBANS CITY v  
DAGENHAM TOWN**

KICK-OFF 3 p m

*Prices of admission*

Centre stand 10s (Bookable in advance), Wing stand 8s, Enclosure, Bobbers' stand and Oak Road terrace 6s (children 3s), Kenilworth Road terrace 5s (Children 2s 6d).

**DIVISION III**

FRIDAY, 27 MARCH

**LUTON TOWN v  
ROTHERHAM UTD**

KICK-OFF 3 p m

SATURDAY, 28 MARCH

**LUTON TOWN v  
READING**

KICK-OFF 3 p m

*Prices of admission*

Centre stand 10s, Wing stand 8s, Enclosure, Bobbers' stand, Oak Road terrace 6s (children) 3s, Kenilworth Road terrace 5s (children 2s 6d).

**FOOTBALL COMBINATION**

SATURDAY 4 APRIL

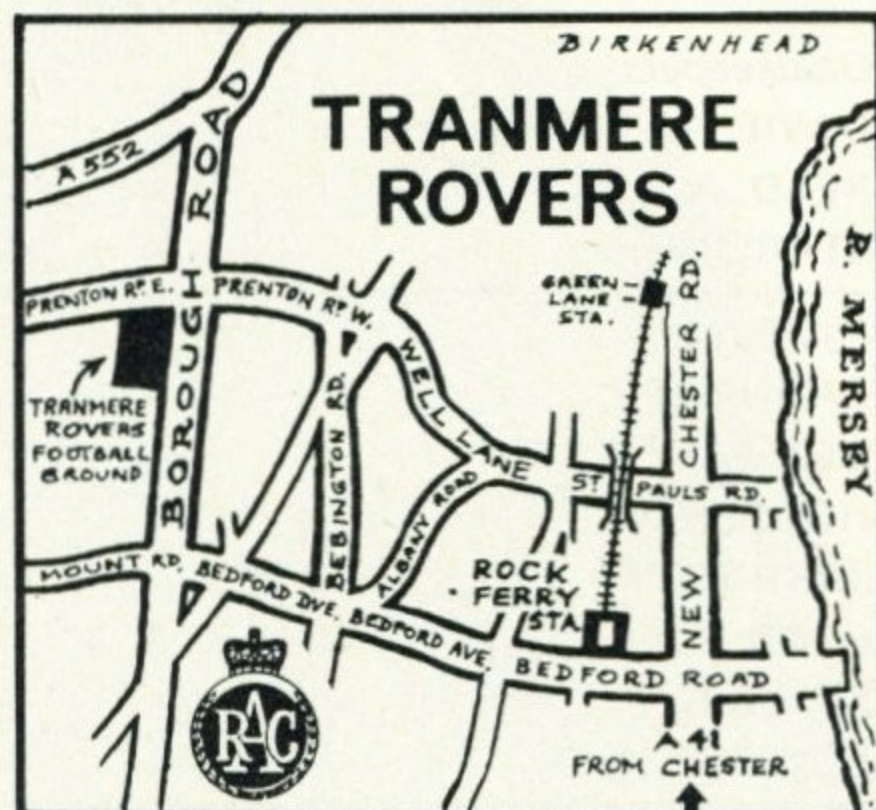
**LUTON TOWN v  
BRISTOL ROVERS**

KICK-OFF 3 p m

*Prices of admission*

Enclosure 2s 6d (children 1s 6d), Stand seats 6d extra.

## HOW TO GET THERE



**TRANMERE ROVERS  
v LUTON TOWN  
SATURDAY 21 MARCH**

KICK-OFF 3 p m

LUTON – Join M1 to Watford Gap.

Join M45 and follow signs 'Coventry M45'.

At end of Motorway, join Coventry by-pass A45 to Stonebridge Roundabout (A452) then Coleshill by-pass (A446).

Follow Wall by-pass (A5) to Muckley Corner and on to M6 Motorway, following signs, 'Preston M6.'

Leave M6 at Middlewich intersection (A54), then to Winsford, Kensall, Tarvin by-pass to the Chester by-pass (A51).

Leave by-pass on A41, as for Birkenhead, through Eastham and Port Sunlight, entering Birkenhead near Rock Ferry Station.

See map for position of Tranmere ground.

Total mileage, 179 $\frac{3}{4}$ .



New 1970 range by Vauxhall

**bearings by Skefko**

**SKF**

*The Skefko Ball Bearing Company Limited  
Luton, Bedfordshire*

BALL DONOR: MR R. T. LELLIOTT 12,751  
THE CORNER STORES, 173 DALLOW ROAD, LUTON

# LUTON TOWN -0

Colours: Shirts White  
Shorts Black

Coach: JIMMY ANDREWS

1  
**Sandy Davie**

2  
**John Ryan**

3  
**Jack Bannister**

4  
**Alan Slough**

5  
**Terry Branston**

6  
**John Moore**

7  
**Malcolm Macdonald**

9  
**Matt Tees**

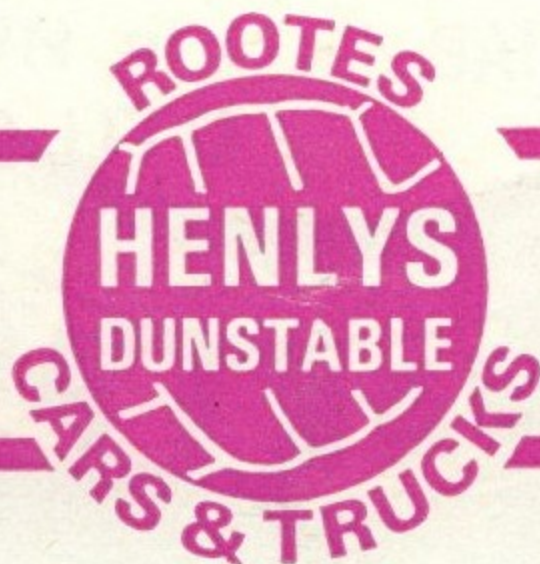
11  
**Mike Harrison**

8  
**John Collins**

10  
**Mike Keen**

Sub: **Keith Allen**

Referee  
B. H. DANIELS  
(Rainham)



Linesmen  
C. F. Attwell (Northampton)  
Red flag  
H. R. Robinson (Norwich)  
Yellow flag

Sub: **Ben Anderson**

10  
**Jimmy Kerr**

8  
**Alf Arrowsmith**

11  
**Brian Grundy**

9  
**George Jones**

7  
**Paul Hince**

6  
**Dave Holt**

5  
**Dave Lyon**

4  
**Roy Hughes**

3  
**Hugh Tinney**

2  
**Keith Eccleshare**

1  
**Neil Ramsbottom**

Colours: Shirts Red  
Shorts White

Manager: LES HART

# BURY -0

Result: LUTON TOWN -0

BURY -0