



# LUTON TOWN

## FOOTBALL CLUB

Telephone: Luton 23151



DIVISION III

# v ROTHERHAM UNITED

Friday 27 March 1970 Kick-off: 3.00 pm

Official Programme: Price 1/-



## FIXTURES 1969-70

### DIVISION THREE

Date	Opponents	Attendance	Result
<b>August</b>			
Sat 9	<b>BARROW</b>	12,080 (H)	3-0
Wed 13	FLC1 Peterboro	10,249 (A)	1-1
Sat 16	Bournemouth	9,735 (A)	1-0
Tues 19	FLC1 <b>PETERBORO'</b>	13,105 (H)	5-2
Sat 23	<b>ORIENT</b>	13,761 (H)	3-2
Tues 26	<b>HALIFAX T.</b>	13,759 (H)	1-1
Sat 30	Gillingham	7,792 (A)	2-0
<b>September</b>			
Tues 2	FLC2 <b>MILLWALL</b>	17,372 (H)	2-2
Sat 6	<b>BRISTOL R.</b>	15,198 (H)	4-0
Mon 8	FLC2 Millwall	14,125 (A)	1-0
Sat 13	Bradford City	10,851 (A)	1-1
Tues 16	Southport	4,003 (A)	3-0
Sat 20	<b>SHREWSBURY</b>	15,396 (H)	2-2
Tues 23	FLC3 Sheffield U.	16,884 (A)	0-3
Sat 27	Plymouth Argyle	14,111 (A)	3-1
Tues 30	Walsall	7,557 (A)	3-1
<b>October</b>			
Sat 4	<b>STOCKPORT</b>	15,944 (H)	2-0
Tues 7	<b>BOURNEMOUTH</b>	18,065 (H)	0-0
Sat 11	Doncaster Rovers	17,380 (A)	0-2
Sat 18	Brighton & H.A.	18,722 (A)	2-1
Sat 25	<b>TORQUAY U.</b>	16,087 (H)	1-1
<b>November</b>			
Sat 1	Rotherham U.	8,727 (A)	1-1
Sat 8	<b>BARNSELY</b>	17,442 (H)	1-1
Sat 15	FAC1 Bournemouth	7,362 (A)	1-1
Tues 18	FAC1 <b>BOURNEM'TH</b>	13,384 (H)	3-1
Sat 22	<b>ROCHDALE</b>	15,876 (H)	2-0
Tues 25	<b>FULHAM</b>	16,485 (H)	1-0
<b>December</b>			
Sat 6	FAC2 Hillingdon	9,333 (A)	1-2
Sat 13	<b>BRADFORD C.</b>	11,857 (H)	5-0
Fri 26	Orient	17,619 (A)	0-1
Sat 27	<b>GILLINGHAM</b>	17,402 (H)	1-2

Date	Opponents	Attendance	Result
<b>1970</b>			
<b>January</b>			
Sat 10	Shrewsbury Town	4,206 (A)	1-5
Sat 17	<b>PLYMOUTH A.</b>	12,358 (H)	0-2
Sat 24	Bury (4)	6,893 (A)	3-1
Sat 31	Stockport County	3,922 (A)	1-1
<b>February</b>			
Sat 7	<b>DONCASTER (5)</b>	12,876 (H)	4-0
Tues 10	Bristol Rovers	13,297 (A)	0-3
Sat 14	Barrow	3,843 (A)	1-2
Sat 21	Torquay United (6)	6,819 (A)	2-2
Sat 28	<b>BRIGHTON</b>	17,584 (H)	1-1
<b>March</b>			
Tues 3	<b>TRANMERE R.</b>	11,368 (H)	2-0
Wed 11	Reading	18,783 (A)	1-0
Sat 14	<b>MANSFIELD (SF)</b>	12,690 (H)	2-2
Tues 17	<b>BURY</b>	12,751 (H)	0-0
Sat 21	Tranmere Rovers	4,035 (A)	2-3
Fri 27	<b>ROTHERHAM U.</b>	(H)	
Sat 28	<b>READING</b>	(H)	
Mon 30			
Tues 31	Barnsley	(A)	
<b>April</b>			
Sat 4	Halifax Town	(A)	
Mon 6	<b>BEDFORD TOWN</b>	(H)	
	Beds. Pro. Cup Final		
Wed 8	Fulham	(A)	
Sat 11	<b>WALSALL (7.30 p.m)</b>	(H)	
Tues 14	<b>SOUTHPORT</b>	(H)	
Mon 20	Mansfield	(A)	
Sat 25	Rochdale	(A)	

### FOOTBALL COMBINATION

Date	Opponents	Attendance	Result
<b>August</b>			
Sat 16	<b>PETERBORO'</b>	1,326 (H)	4-2
Sat 23	Norwich City	(A)	0-0
Sat 30	<b>TOTTENHAM H.</b>	1,683 (H)	2-2
<b>September</b>			
Sat 6	Gillingham	(A)	2-3
Sat 13	<b>BOURNEMOUTH</b>	1,124 (H)	3-3
Tues 23	Northampton Town	(A)	1-5
Sat 27	<b>SWINDON T.</b>	1,306 (H)	2-0
<b>October</b>			
Wed 1	Crystal Palace	(A)	1-2
Sat 11	<b>BIRMINGHAM</b>	1,309 (H)	1-2
Sat 25	Tottenham H. (Cup)	(A)	1-3
<b>November</b>			
Sat 1	<b>SOUTHAMPTON</b>	1,239 (H)	5-3
Tues 4	Queens Park Rangers	(A)	5-1
Sat 8	Leicester City	(A)	0-4
Sat 22			
<b>December</b>			
Sat 13	Bristol Rovers	(A)	1-1
Tues 16	<b>BIRMINGHAM (Cup)</b>	491 (H)	3-0
Sat 20	Arsenal	(A)	0-5
Sat 27	Northampton (Cup)	(A)	2-2
Tues 30	Walsall (Cup)	(A)	

### 1970

Date	Opponents	Attendance	Result
<b>January</b>			
Sat 3	<b>LEICESTER C (Cup)</b>	742 (H)	0-4
Mon 12	<b>WALSALL (Cup)</b>	619 (H)	1-1
Sat 17	Plymouth Argyle	(A)	0-1
Tues 20	<b>TOTTENHAM (Cup)</b>	1,046 (H)	0-2
Sat 24	<b>READING</b>	739 (H)	2-0
Tues 27	Birmingham (Cup)	(A)	1-2
Sat 31	<b>N'HTON (Cup)</b>	1,006 (H)	4-1
<b>February</b>			
Sat 7			
Mon 16	<b>CHELSEA</b>	1,907 (H)	1-0
Sat 21	<b>SWANSEA T.</b>	937 (H)	3-1
Wed 25	Cardiff City	(A)	0-3
Sat 28			
<b>March</b>			
Sat 14			
Sat 21	West Ham United	(A)	0-2
Mon 23	Leicester C.	(A)	
<b>April</b>			
Thurs 2	Fulham	(A)	
Sat 4	<b>BRISTOL C.</b>	(H)	
Wed 8	<b>IPSWICH T.</b>	(H)	
Wed 15	<b>OXFORD U.</b>	(H)	

**To be re-arranged**  
Walsall (A)

© Football League Ltd, 1969

Published by

Luton Town Football and Athletic Company Limited,  
Kenilworth Road, Luton.

Printed by

White Crescent Press Limited, Crescent Road, Luton.  
Telephone Luton 23122



## LUTON TOWN FOOTBALL AND ATHLETIC CO, LTD

KENILWORTH ROAD, LUTON, BEDFORDSHIRE  
TELEPHONE 0582 23151

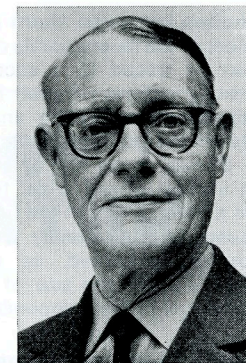
Established 1885 Incorporated 1897  
First Professional Side Season 1891-1892  
Football League Division III Champions 1936-37  
Football League Division II Runners-up 1954-55  
FA Challenge Cup Finalists 1958-59  
Football League Division IV Champions 1967-68

OFFICIAL  
PROGRAMME  
27 MARCH  
1970

Directors: A. T. HUNT, *Chairman*, L. S. HAWKINS, *Vice-Chairman*,  
J. A. C. BAIN, R. I. BURR, T. HODGSON,  
ERIC MORECAMBE, H. RICHARDSON  
Chief Executive and Manager: Alec Stock Secretary: R. Readhead  
Hon Medical Officers: Dr C. J. Buckingham, MB, BS and  
Dr P. J. Burrows, MB, BCh, DObst, RCOG  
Hon Dental Surgeon: A. Hargreaves, Esq  
Hon Solicitor: E. Waller, Esq Auditors: Messrs Keens, Shay, Keens & Co

New Series  
Vol. 1 No. 27

*Eric Pugh's Page*



Easter usually produces an outsize headache for most clubs, especially those unfortunate enough to suffer injuries during the crowded programme and it also has a habit of resolving some of the major issues in the League.

With three matches down for decision in such a short space of time, it could scarcely be otherwise and the Town are perhaps a little fortunate this year in that their three games are spread over five days instead of the four that is more usual.

### Barnsley visit is on Tuesday

This is brought about by the fact that Barnsley, strangely to me, though they must have their own good reasons for it, prefer to have their second home match of the holiday period on Tuesday, rather than on Easter Monday.

So, the Town find themselves without a match on the Bank Holiday which used to be regarded as one of the major days for drawing big crowds.

### Reserves have a clear weekend

Throughout the weekend, the Reserves

have no match, which could be a helpful circumstance in case of injuries and the stage at Kenilworth Road on Monday, will be held by the Luton and South Beds League Cup Final in which the competing clubs are Brache Sparta, the holders, and 61 FC.

Today, we welcome Rotherham United, a team which, before the season started, must have been in the top half dozen favoured to make a promotion bid.

### Recovered, then fell away

Unfortunately, they had a bad start,



recovered to the tune of playing eighteen League games without defeat, then fell away again, and are out of the reckoning now.

At the same time, they are a side of considerable promise, liberally laced with youngsters recruited locally and blended with a leavening of experience.

Next season, they could well be a powerful challenger for a place in Division II and, certainly, the Town cannot afford to treat them lightly.

#### Only an outside chance now

So badly have the Town slipped in their own promotion bid – to the tune of collecting only thirteen points out of the last thirty-two at stake – that they face the prospect of having to gain maximum points during the holiday period to remain in the reckoning with any sort of chance.

Certainly, their recent record does not inspire great confidence in their ability to finish with six points out of six, but the players are only too keenly aware that the pressures are on.

#### Inches between them and goals

Most of the recent points dropped at home can be traced to a succession of near misses in front of goal. Inches at times, stood between them and a substantial lead in the last home match with Bury.

Should those sort of shots start going in instead of just wide, then there could be a definite turn in the tide in the Town's favour and it certainly would be a tonic for all concerned, as well as highly beneficial for the size of the attendance tomorrow, if that happened this afternoon.

#### Suffered defeat by non-league club

Certainly, during a holiday period, there could not be a much better attraction than tomorrow's opponents, Reading, who have come into the promotion reckoning with a tremendous rush after having suffered the ignominy, as did the Town, of being tossed out of the FA Cup by a non-League club.

Just over a fortnight ago, the Town ended an unbeaten run of fifteen matches by them by scoring the only goal of a cracking game at Elm Park, watched in pouring rain by 18,783 spectators.

#### The came the slump again

That, we thought, was the turning point

for the Town as they gathered momentum for the final bid for promotion. How wrong we were on that rather 'heady' night at Reading is proved by the fact that the next three matches, two of them at home, have produced only two points.

No wonder football is described as unpredictable and it came as the final, telling blow to be beaten at Tranmere last Saturday.

#### Three points would have made difference

That both the last two home matches should have been won and that there should have been at least a point to show from the visit to Tranmere, there can be no doubt.

With those three points added to their aggregate, the Town certainly would have been beginning the holiday period in a happier, more optimistic frame of mind.

Now, the fight is uphill, indeed, with the Town in the position that they cannot afford to drop a single point.

#### Not the best of preparation

That is scarcely the best frame of mind in which to have to approach vital matches, but the plain fact is there and a rousing victory today would do much to increase confidence for the remainder of the programme.

Tomorrow's opponents, Reading fell sadly from grace on Saturday when they lost 4-0 at home to Fulham.

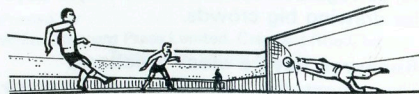
This was obviously the case of a clash between two teams committed to attack, with Fulham showing more depth in defence and, when the Town were at Reading it was not difficult to detect a weakness down their middle which was too often left uncovered.

#### OUR COVER PICTURE

How the Town pressure on the Bury goal last week mounted in the last quarter of an hour.

Here is a typical scene, with even Terry Branston trying to force home the attack.

Picture: *The Luton News and Green 'Un*



# CONNELLS

Auctioneers, Surveyors  
Valuers and Estate Agents

5, Upper George Street, Luton

Telephone: 31261 for

## Houses and Bungalows

COUNTRY HOUSES, COMMERCIAL AND  
INDUSTRIAL PREMISES, COMPULSORY  
PURCHASE NEGOTIATIONS IN

*Luton and Surrounding Districts*

Branch Offices throughout  
HERTFORDSHIRE, BEDFORDSHIRE, BUCKINGHAMSHIRE  
and at 62, GROSVENOR STREET, LONDON, W.1.



## THE ONE STOP SHOPPING CENTRE for

Hardware, Electrical, Men's Wear, Fuel, Catering,  
Footwear, Bookshop, Drapery, Furnishing, Toys &  
Sports, Grocery, Greenfruit and Butchery with Credit  
Facilities to suit your requirements.

PLUS DIVIDEND STAMPS

### SUPERSTORE

4 NEW BEDFORD ROAD

LUTON. Tel: 21171

LUTON CO-OPERATIVE SOCIETY LTD





*From Bob's Office*

When I go through the list of entries for the various competitions that are set on this page, I am constantly surprised at the number that are received from outside Luton.

For instance, for the last one, there were entrants from Welwyn Garden City, Linslade, Letchworth, Baldock, Bletchley, Huntingdon, Hitchin and Beaconsfield.



*Bob Readhead, Secretary*

#### **Luton man was the winner**

Yet, the first correct entry to be opened was from Luton, submitted by Nigel McPheat, 47 Granby Road, Luton, who correctly named Billington as the centre-forward named 'Hugh' who left the Town for a First Division club and then became a licensee for a spell. Mr McPheat receives a watch as his prize.

For our competition covering the two holiday matches, we are setting a new style competition in the form of an anagram.

#### **Name of former player**

It contains the christian and surname of a popular Luton player who spent some time with the club and who left only in comparatively recent times.

The anagram is: 'THE RAW MONDAY TRIK'. Please do not forget your entrance fee of sixpence, otherwise your attempt will not be valid. Prize for the first correct solution to be opened will again be a lady's or gentleman's watch.

#### **Pressure on the ground staff**

For our ground staff, the pressure is really on at the moment, and there is a tremendous rush of matches to be staged on this ground before we are forced to call a halt on Saturday 18 April, in order to give groundsman, Eddie Hartley and his staff every opportunity to complete their renovations of the pitch during the close season.

With an early start tending to be made to every campaign, especially now that it is the fashion to play pre-season friendly games, the amount of time available to groundsmen has been cut severely.

#### **Remaining games on here**

Starting with next Monday when the Luton League stage their Cup Final between Brache Sparta and 61 FC (3 pm), the list of remaining matches is:

April 1 Whitbread Cup Final (Sunday League, 7.30 pm).

4 Luton Schools under 14 Final (11 a m).

4 Reserves v Bristol City (3 pm).

6 Town v Bedford Town (Professional Cup Final, 7.30 pm).

8 Reserves v Ipswich (7.30 pm).

11 Town v Walsall (7.30 pm).

14 Town v Southport (7.30 pm).

15 Reserves v Oxford Utd (7.30 pm).

18 Beds v Hunts (Youth match 11 a m).

18 Beds Senior Cup Final (3 pm).

#### **Football Association Diary**

The FA Diary containing Football League fixtures for season 1970-71, will be available during the first fortnight in August.

Copies may be obtained from the Football Association, 22 Lancaster Gate, London W2, price 6s.



# Outside-right. Inside-right.



What makes Viva the 1-litre league leader?

**The shape.** The forward line's great – so is the back.

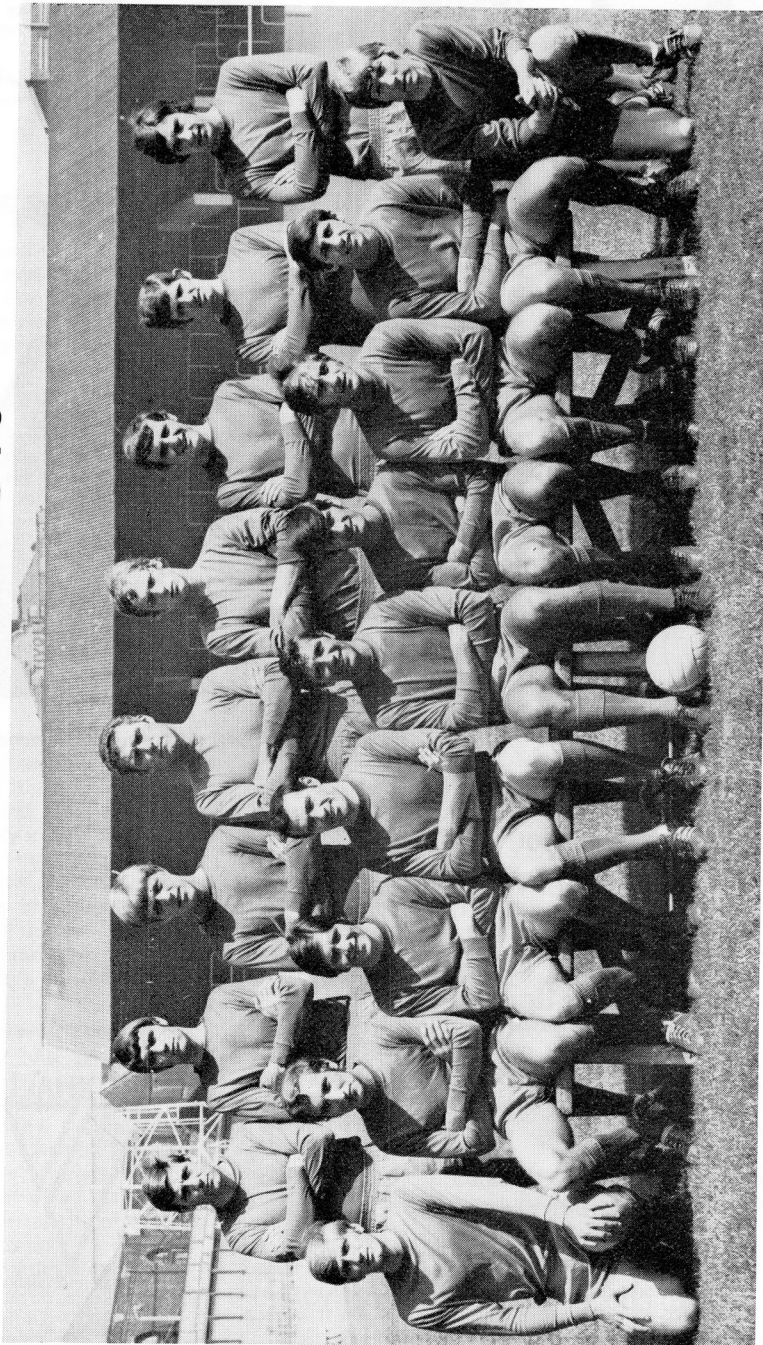
**The space.** Full 4/5 passenger comfort – and luggage-room to match!

**The pace.** All-action performance, with sports-car handling – and in-built safety.

**The price.** Viva prices start at £701. And there are 20 all-star performers to choose from. Why don't you join the Viva supporters club?







Front row (left to right): Trevor Swift, Neil Warnock, Lee Brogden, Jim Storrin (now with Portsmouth), John Quinn, Dave Bentley, Jimmy Mullen, Trevor Womble and Bill Griffin. Back row (left to right): Barry Mealand, David Watson, Neil Hague, Jim Furnell, Roy Tunks, Chris Hudson, Dennis Leigh and Steven Downs (now with Sheffield Wednesday). Picture by 'Rotherham Advertiser'

## Rotherham came into the reckoning — then faded away *By Tony Pulein*

A few weeks ago Rotherham looked a surprise late challenger for promotion. A remarkable run of eighteen undefeated League games had lifted them from 21st place to within four points of the leaders.

But, when that run was finally ended at Bury, the Millers slumped badly and dropped out of the reckoning.

Nevertheless, Rotherham have a very young side which has already shown its potential and may well be ready to sustain a more consistent bid for promotion next season. Seven members of the side are home-produced players — all quite new to League football.

These are backed by two men in defence who have vast experience — goalkeeper Jim Furnell and full-back Billy Houghton.

### Was with three Division I clubs

Furnell started out with Burnley, made his First Division debut in 1959–60, but had few chances to shine in the senior side.

Liverpool signed him in February 1962 in time to boost their promotion bid and Furnell rose back into the First Division with them at the end of that season. He made another move, to Arsenal, in 1963 and for five years he was first choice in the Highbury goal.

Rotherham signed him during the summer of 1968 and he missed only five games last term.

### Was loaned to York City

When Furnell has been injured his place has been taken by Rotherham discovery, Roy Tunks, who made a solitary appearance in the League team two seasons ago. He spent part of last season on loan to York City, returning in March.

Billy Houghton was a wing-half in the early days, back in 1957–58, when he stepped into the Barnsley side that was then in the Second Division. In seven years he made over 200 League appearances for them. He moved to Watford for a couple of years and on to Ipswich.

Last summer he switched clubs again, signing for Leicester. But he wanted a club nearer his home in Barnsley and got his wish when Rotherham signed him in January.

### Home-produced men

Left-back, Dennis Leigh, joined Rotherham from Doncaster two seasons ago.

Another 'outsider' is David Watson, who developed with Notts County and signed for the Millers two Januarys ago.

The remainder of the defence comprises home-produced men like Chris Hudson, introduced to League football last season, Trevor Swift and Neil Hague, both of whom came in during 1967–68.

Hague, incidentally, made two appearances for the England youth XI during his debut season.

### Apprentice leader had his chance

Latest Rotherham find to make a hit in the first team is young apprentice centre-forward Trevor Phillips who got his big chance this season.

David Bentley and Lee Brogden made their bow two seasons ago, Bentley gaining an immediate regular place. Brogden really established himself last season.

Outside-left Jimmy Mullen set out in League football with Reading three years ago but jumped at the chance to tackle Second Division football with Charlton a year later. He didn't get a lot of opportunities at the Valley so he moved on to Rotherham last season.

Neil Warnock joined the club last summer after a couple of seasons in Chesterfield's Fourth Division side. David Lill, who learned his game at Hull but couldn't break through for a regular game in their League team, arrived at Millmoor last October.

### Keith Allen saved a point

When we visited Millmoor in November we came away with a point, Keith Allen equalising Dennis Leigh's first-half penalty goal for the home side.

Our League record against Rotherham now reads:

	P	W	D	L	F	A	Pts
Home	8	5	2	1	19	11	12
Away	9	2	3	4	12	16	7

17 7 5 5 31 27 19



Luton's leading newsagents

# HOUGHTONS

CONFECTIONERS · TOBACCONISTS  
GREETINGS CARD SPECIALISTS

- ★ 16 The Parade, Hill Rise
- ★ 3 Ashwell Parade, Sundon Park
- ★ 82 Putteridge Road, Stopsley
- ★ 253 Birdsfoot Lane
- ★ 150 Sundon Park Road
- ★ Jansel House, Stopsley
- ★ 217 Dunstable Road
- ★ 178 Ashcroft Road, Stopsley
- ★ 8 Hillborough Crescent, Houghton Regis

*Whenever you are near  
— pay us a visit  
We will be pleased  
to serve you*

buy your

EVENING **POST**

with full-time  
results outside  
the ground  
after the match



## RICHARDSON and BOTTOMS

LIMITED

*Builders  
and  
Contractors*

107, BISCOT RD.

Luton

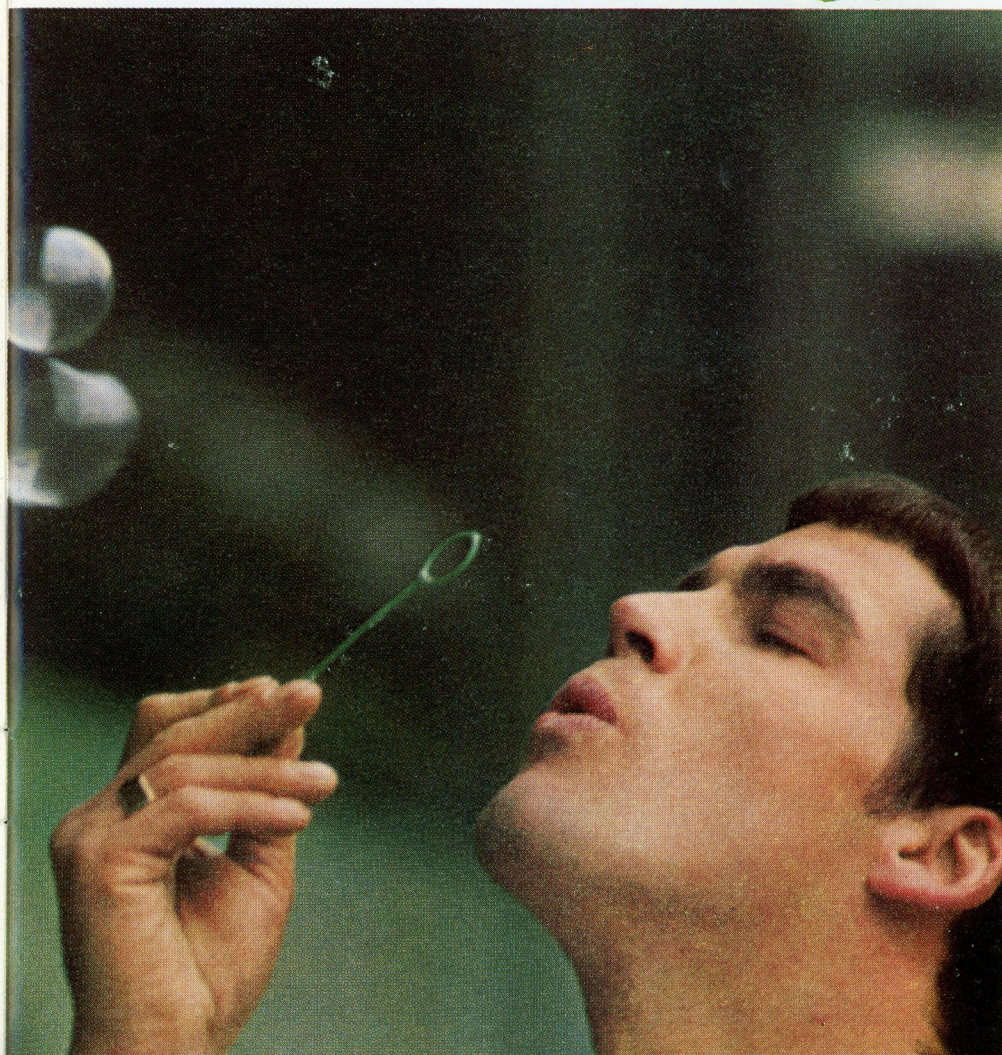
Telephone: 25628

# Football League Review



ONE SHILLING

THE OFFICIAL JOURNAL OF THE FOOTBALL LEAGUE



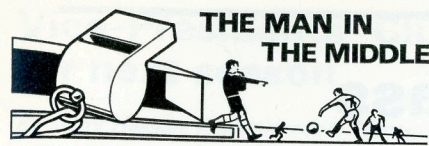


# No flannel- All Flavour



Round here  
that's what Park Drive  
means to us

**Park Drive Flavour**



## **ROY DARLINGTON (Runcorn)**

Several games were due to start on the local park. The teams were shooting into goal. **ROY DARLINGTON** was wondering which match he would watch.

Then consternation! The referee had failed to arrive for one match . . . there was only a few minutes to kick-off.

So Mr Darlington rashly agreed to have a go, so that the game could go on.

He must have done well for, at the end, the league secretary, who had been watching, asked him to take up refereeing.

From there he rose from local matches to the West Cheshire and Cheshire County Leagues, then to the Central League.

### **On 'list' after ten years**

In 1962, just ten years after he 'substituted'

in that park game, he was appointed to the Football League linesmen's list. Four years later he was promoted to the supplementary referees' list and, last season, rose to the full list.

One incident from his early days always remains vivid in his memory. 'Soon after the start of this quite unimportant match one player, obviously terribly off form, was goaded by his trainer to 'fight' for the ball.

### **Took it literally**

Next time the ball approached the player took his trainer's word literally – and smashed a right uppercut on an opponent's jaw!

Mr Darlington, a pavior with Runcorn UDC, lives at home with his widowed mother. In summer he plays cricket for Helsby BICC in the Merseyside competition and, during winter, keeps busy refereeing and in his capacity as chairman of Runcorn Referees' Society and secretary of his local league.

## **PERSONALITY PROFILE**

### **24 ALEC STOCK**

One of the best known and most popular men in the business, and has had wide experience as a manager in various grades of the game.

As a player, he was an inside-forward with Charlton Athletic and QPR, and, after army service, he had his first taste of the management side in the dual capacity as a player with Yeovil.

### **Relishes cup triumphs**

When he talks of his early days with the Southern League club, he recalls with great relish those famous Cup victories on the Somerset club's sloping ground over Bury and Sunderland.

Enthusiasm in the small town in those days knew no bounds and there is no doubt that those Cup successes boosted Stock's chances of taking over a League club.

### **Led QPR from Div III to Div I**

The chance came with Leyton Orient, with the first of three separate spells he had in all at Brisbane Road. There was a short period as assistant manager to



Arsenal, followed by some months in charge of the famous Italian club, Roma.

However, it was with QPR that he really hit the jackpot, leading them from Division III to Division I in two seasons and winning the League Cup for good measure.



# Two in a class of their own



Comfort for all manner of functions – that is the motto of the new, luxurious Hatters' Club which is proving so popular.

Today, the club is open until 2.55 p m for drinks and snacks and re-opens from 4.45 to 5.30 p m and then continuously from 6 o'clock until 11.30 p m.

## The New Sports Centre



Our new Sports Centre at 231 Dunstable Road which offers a comprehensive list of sports goods, toys and games at competitive prices.

## Vice-Presidents' Club starts for next season

By Harry Haslam, Entertainments Manager

An innovation which we plan for the start of next season is the formation of a Vice-Presidents' Club for which I am certain there will be considerable support and which will be a further step forward in our aim to increase the comfort of our supporters.

The annual subscription will be £25 and that will entitle the member to his own reserved seat in a special section of the stand.

### Fully licensed club provided

In addition, there will be a fully licensed club which will be comfortably furnished and where members can foregather before and after the match and at half-time.

Judging from enquiries I have received since passing reference was first made to this plan, considerable interest is being taken in it.

### Limit of 200 is contemplated

At the moment, we contemplate an outside limit of 200, because we feel that a certain amount of exclusiveness is necessary in a project of this sort.

Many other clubs are running projects of a similar kind and we feel that so many of the people who are split all over the ground at matches at the moment can do us a lot of good if they were grouped together collectively.

Applications are being accepted now at the Sports Centre, 231 Dunstable Road, Luton, and the club will be ready in good time for the new season.

### Next train is to Halifax

Next chartered train will be run to Halifax on Saturday, 4 April. Timings are not to hand as yet, but will be published in the local Press next week.

There will be no trains either to Barnsley or Fulham and we end the season by sending one to Rochdale for the last match on Saturday, 25 April.

### SUPPORTER OF THE DAY

Mr A. R. Farmer, of 193 Daniels, Pangs-hanger, Welwyn Garden City, writes, 'I feel my son, **MARK FARMER**, fits the



bill as Luton's youngest supporter.

'The first game he saw was against Northampton when he was just 18 months old and he caused a commotion because he was constantly clapping and shouting "Goal" when one had not been scored.

'Now, he is an old hand of two years old, but has missed one or two games recently because of the bad weather. However, his mum and dad have kept him informed.'

**TODAY'S MASCOT**  
**GRAHAM INGRAM**, 62 Hadrian Avenue, who is 7 years old.

### BONANZA WINNERS

Winning numbers in the Luton Town FC Bonanza Draw made at half-time at the home match against Bury.

- 1st prize 0501 – watch;
- 2nd prize 0712 – watch;
- 3rd prize 3120 – radio;
- 4th prize 3479 – radio;
- 5th prize 0321 – Odeon cinema seats;
- 6th prize 2154 – Odeon cinema seats.

### LUTON TOWN FC POOL

#### LUCKY NUMBERS

- Saturday:** £20-20985; £15-07878; £5-18379; £5-40914; £2-39328; £2-24016; £1-13709.
- Monday:** £20-11786; £15-33072; £5-26128; £5-08961; £2-44625; £2-16412; £1-49517.
- Tuesday:** £20-03883; £15-47909; £5-14346; £5-30743; £2-09307; £2-38069; £1-23636.
- Wednesday:** £20-36105; £15-15838; £5-27667; £5-04964; £2-31396; £2-28845; £1-05132.
- Thursday:** £20-27534; £15-21420; £5-01319; £5-42183; £2-02161; £2-35923; £1-41578.
- Friday:** £20-45186; £15-34751; £5-12034; £5-17197; £2-46352; £2-29161; £1-10815.



# LATEST RESULTS

## DIVISION III

### Luton Town 1 Brighton 1

Davie; Ryan, Jardine; Slough, Nicholl, Moore; French, Collins, Macdonald, Keen, Harrison.  
Substitute: Tees.  
Scorer: Macdonald (pen).

### Luton Town 2 Tranmere Rovers 0

Davie; Ryan, Jardine; Slough, Branston, Moore; Macdonald, Collins, Tees, Keen, French.  
Substitute: Allen.  
Scorers: Macdonald, Ryan.

### Reading 0 Luton Town 1

Davie; Ryan, Jardine; Slough, Branston, Moore; Collins, Macdonald, Tees, Keen, French, (Allen).  
Scorer: Macdonald.

### Luton Town 2 Mansfield Town 2

Davie; Ryan, Jardine; Slough, Nicholl, Moore; Macdonald, Collins, Tees, (Allen), Keen, Harrison.  
Scorers: Ryan, Harrison.

### Luton Town 0 Bury 0

Davie; Ryan, Bannister; Slough, Branston, Moore; Macdonald, Collins, (Allen), Tees, Keen, Harrison.

### Tranmere Rovers 3 Luton Town 2

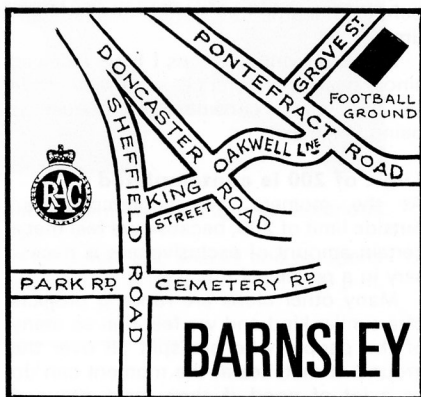
Davie; Ryan, Bannister; Slough, Branston, Moore; Macdonald, Collins, (Tees), Allen, Keen, French.  
Scorers: Allen, Slough.

## FOOTBALL COMBINATION

### West Ham 2 Luton Town 0

Starling; Hooper, Shanks; Guild, Nicholl, Delgado Hipwell, Busby, Phillips, Wainwright, Harrison.  
Substitute: Hines.

## HOW TO GET THERE

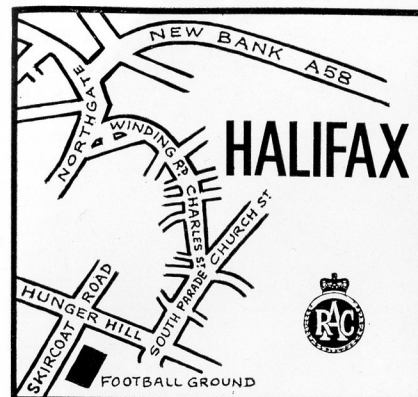


### BARNSLEY

#### v LUTON TOWN TUESDAY, 31 MARCH

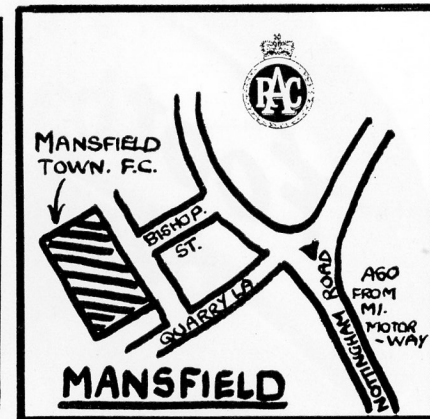
LUTON  
Leave by A505 as for Dunstable  
Join M1 3 miles  
Newport Pagnell Services 21 miles  
Watford Gap Services 45 miles  
Leicester Forest Services 68 miles  
Trowell Services 95 miles  
Woodhall Services 123 miles  
At 5m. on, follow signs 'Sheffield M1'  
Intersection No. 36 141 miles  
Follow signs Barnsley A61.  
BARNSLEY 145 miles  
(See Plan)

## HOW TO GET THERE



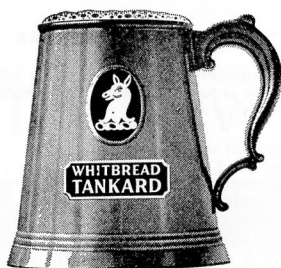
#### HALIFAX TOWN v LUTON TOWN SATURDAY, 4 APRIL

LUTON  
Leave by M1 as signed  
'Birmingham M1'  
Toddlington Services 7 miles  
Newport Pagnell Services 21 miles  
Watford Gap Services 45 miles  
Leicester Forest Services 68 miles  
Trowell Services 95 miles  
Woodall Services 123 miles  
At 5m. on, follow signs  
'Leeds and Sheffield M1'  
Intersection A650 156 miles  
Follow signs 'A650 Bradford'  
East Ardesley 157 miles  
Tingley 159 miles  
Morley 161 miles  
Drighlington 164 miles  
Turn L onto A58 and follow to:  
HALIFAX 174 miles  
(See Plan)



#### MANSFIELD TOWN v LUTON TOWN MONDAY, 20 APRIL

LUTON  
Leave by A505 as for Dunstable  
Join M1 3 miles  
Newport Pagnell Services 21 miles  
Watford Gap Service Area 45 miles  
Leicester Forest Service Area 68 miles  
Trowell Services 95 miles  
Intersection No. 27 104 miles  
Follow signs 'A608 Mansfield'  
At 1¼m. on, turn L onto A611  
New Annesley 107 miles  
At 4m. on, turn L onto A60 into:  
MANSFIELD 113 miles  
(See Plan)

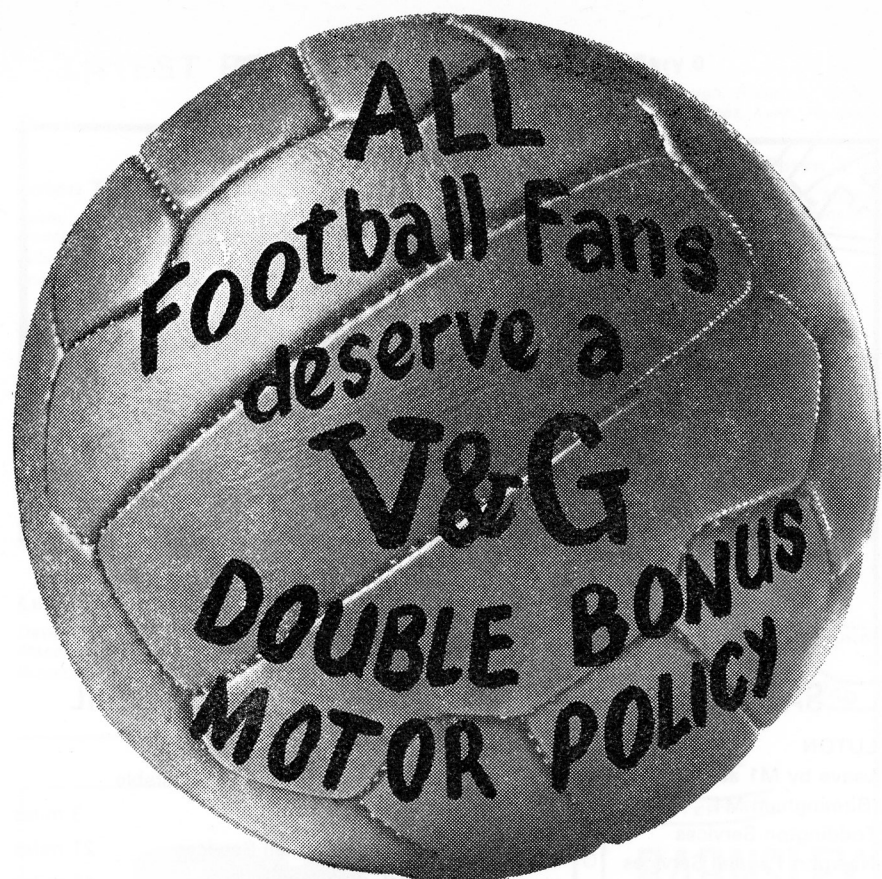


**WHITBREAD  
TANKARD**  
cool,  
clear, refreshing

Available in all Bars







**THE V&G  
DOUBLE BONUS  
MOTOR INSURANCE POLICY  
GIVES FAIRER TERMS  
TO EVERY DRIVER**

For further information contact your local officially appointed V & G Insurance Broker, or write or phone the address below.

**V&G THE VEHICLE & GENERAL  
GROUP OF  
INSURANCE COMPANIES**

Group Headquarters,  
Administration & Operations;  
Bushey House,  
High Street, Bushey,  
Hertfordshire.  
Tel: 01-950 4311.

THE VEHICLE & GENERAL INSURANCE CO. LTD.  
LIFE, CASUALTY & GENERAL INSURANCE CO. LTD.  
AUTOMOBILE & GENERAL INSURANCE CO. LTD.  
THE GENERAL & COMMERCIAL MOTOR INSURANCE CO. LTD.  
METROPOLITAN GENERAL INSURANCE CO. LTD.  
WORLD AUXILIARY INSURANCE CORPORATION LTD.  
PIONEER LIFE ASSURANCE CO. LTD.

	APPEARANCES				GOALS			
	FL	FAC	FLC	FC	FL	FAC	FLC	FC
<i>Goalkeepers</i>								
DAVIE, A.	31	3	2	4	—	—	—	—
READ, A.	6	—	3	14	—	—	—	1
STARLING, A.	—	—	—	15	—	—	—	—
<i>Full Backs</i>								
BANNISTER, J.	32	3	5	1	—	—	—	—
DOUGAN, M.	6	—	3	5	—	—	—	1
HOOPER, G.	—	—	—	17	—	—	—	—
JARDINE, F.	10	1	—	20	—	—	—	—
RYAN, J.	27	3	2	8	2	—	—	—
SHANKS, D.	—	—	—	6	—	—	—	—
LOVERIDGE, D.	—	—	—	7	—	—	—	—
<i>Half Backs</i>								
BRANSTON, T.	10	2	5	17	—	—	1	—
DELGADO, A.	—	—	—	5	—	—	—	—
KEEN, M.	37	3	5	—	2	—	—	—
GUILD, A.	—	—	—	28	—	—	—	4
MOORE, J.	14	—	1	18	—	—	—	—
NICHOLL, C.	28	1	—	4	2	—	—	—
SLOUGH, A.	36	3	5	2	3	—	—	—
THOMPSON, P.	—	—	—	2	—	—	—	—
WAINWRIGHT, R.	—	—	—	25	—	—	—	—
<i>Forwards</i>								
ALLEN, K.	33	3	5	4	6	—	2	1
BUSBY, V.	—	—	—	8	—	—	—	3
COLLINS, J.	34	3	3	3	9	2	—	1
FRENCH, G.	34	3	5	1	4	—	—	—
HARRISON, M.	8	1	—	18	3	—	—	6
LEWIS, B.	6	—	2	8	—	—	2	4
MacDONALD, M.	37	3	5	2	19	1	2	4
PHILLIPS, P.	4	—	—	25	—	—	—	13
SHEFFIELD, L.	6	—	5	6	—	—	2	4
STEVENSON, M.	—	—	—	7	—	—	—	2
TEES, M.	31	3	1	1	11	2	—	—
SPARKES, N.	—	—	—	2	—	—	—	—
TUFFS, R.	—	—	—	1	—	—	—	—
ADAIR, K.	—	—	—	1	—	—	—	—
LEE, R.	—	—	—	3	—	—	—	—
HIPWELL, R.	—	—	—	18	—	—	—	—
FOSSEY, P.	—	—	—	10	—	—	—	1
SORBIE, R.	—	—	—	5	—	—	—	—
OPPONENT	—	—	—	—	1	—	—	1
AMATEURS	—	—	—	4	—	—	—	—

FL - Football League; FAC - FA Cup; FLC - Football League Cup; FC - Football Combination



# Coming Matches

DIVISION III  
(TOMORROW)

## LUTON TOWN v READING

KICK-OFF 3 p m

*Prices of admission*

Centre stand 10s, Wing stand 8s, Enclosure, Bobbers' stand, Oak Road terrace 6s (children 3s), Kenilworth Road terrace 5s (children 2s 6d).

### FOOTBALL COMBINATION

SATURDAY 4 APRIL

## LUTON TOWN v BRISTOL CITY

KICK-OFF 3 p m

WEDNESDAY, 8 APRIL

## LUTON TOWN v IPSWICH TOWN

KICK-OFF 7.30 p m

*Prices of admission*

Enclosure 2s 6d (children 1s 6d), Stand seats 6d extra.

### BEDS PROFESSIONAL CUP FINAL

MONDAY, 6 APRIL

## LUTON TOWN v BEDFORD TOWN

KICK-OFF 7.30 p m

*Prices of admission*

Centre stand 10s, Wing stand 8s, Enclosure, Bobbers' stand and Oak Road terrace 6s (children 3s). Kenilworth Road terrace 5s (children 2s 6d).

# TODAY'S HALF-TIME SCORES

### FIRST LIST

A	Burnley	.....	Stoke C	.....
B	Man C	.....	Derby Co	.....
C	Sunderland	.....	Newcastle	.....
D	Tottenham	.....	Notts F	.....
E	Bristol C	.....	Bolton W	.....
F	Oxford U	.....	Leicester C	.....
G	Watford	.....	Middlesbro	.....
H	Barrow	.....	Shrewsbury	.....
K	B'mouth	.....	Walsall	.....
L	Brighton	.....	Reading	.....
M	Gillingham	.....	Bradford C	.....
N	Southport	.....	Barnsley	.....

### SECOND LIST

A	Torquay U	.....	Fulham	.....
B	Tranmere R	.....	Rochdale	.....
C	Colchester	.....	Aldershot	.....
D	Crewe A	.....	Swansea T	.....
E	Grimsby T	.....	Chesterfield	.....
F	Hartlepool	.....	Workington	.....
G	Lincoln C	.....	Newport C	.....
H	Southend	.....	North'ton	.....
K	Wrexham	.....	Darlington	.....
L	York C	.....	Peterboro	.....

### HOW THEY STAND

#### DIVISION III

	P	W	D	L	F	A	P		
Brighton	..	..	40	21	9	10	50	32	51
Orient	..	..	36	19	11	6	52	26	49
Bristol Rovers	..	..	39	18	13	8	72	48	49
<b>LUTON TOWN</b>	..	..	<b>37</b>	<b>17</b>	<b>12</b>	<b>8</b>	<b>62</b>	<b>39</b>	<b>46</b>
Reading	..	..	38	18	10	10	68	61	46
Barnsley	..	..	40	16	13	11	58	50	45
Bradford City	..	..	38	17	9	12	53	40	43
Fulham	..	..	36	14	13	9	65	46	41
Mansfield Town	..	..	35	16	8	11	50	38	40
Rochdale	..	..	37	16	8	13	57	46	40
Rotherham United	..	..	39	13	14	12	54	43	40
Halifax Town	..	..	38	13	13	12	44	51	39
Torquay	..	..	38	12	14	12	52	50	38
Shrewsbury Town	..	..	37	11	15	11	52	51	37
Plymouth	..	..	38	14	9	15	47	47	37
Doncaster Rovers	..	..	39	13	10	16	42	47	36
Bury	..	..	40	13	8	19	67	73	34
Southport	..	..	36	11	9	16	41	44	31
Walsall	..	..	34	12	7	15	36	54	31
Bournemouth	..	..	38	9	12	17	40	65	30
Tranmere Rovers	..	..	35	9	10	16	41	65	28
Barrow	..	..	41	7	13	21	39	72	27
Gillingham	..	..	35	9	7	19	38	53	25
Stockport County	..	..	38	5	9	24	22	60	19

Up to and including Saturday 21 March



New 1970 range by Vauxhall

# bearings by SKEFKO

# SKF

*The SKEFKO Ball Bearing Company Limited  
Luton, Bedfordshire*



# THE LINE-UP THIS AFTERNOON

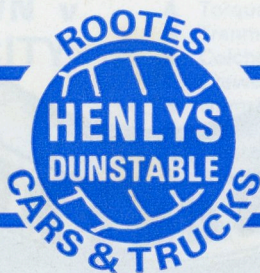
## LUTON TOWN

Colours: Shirts White  
Shorts Black

Coach: JIMMY ANDREWS

	1	
	<b>Sandy Davie</b>	
2		3
<b>John Ryan</b>		<b>Jack Bannister</b>
4	5	6
<b>Alan Slough</b>	<b>Terry Branston</b>	<b>John Moore</b>
7	9	11
<b>Graham French</b>	<b>Matt Tees</b>	<b>Mike Harrison</b>
	8	10
	<b>Malcolm Macdonald</b>	<b>Mike Keen</b>
Sub: <b>Keith Allen</b>		

Referee  
R. DARLINGTON  
(Blagdon, Bristol)



Linesmen  
I. J. MILLAR (Swindon)  
Red Flag  
W. G. SOAMES, (Wellingborough)  
Yellow Flag

Sub: **John Fantham**

	10		8
	<b>David Bentley</b>		<b>David Lill</b>
11		9	7
<b>Jimmy Mullen</b>		<b>Trevor Phillips</b>	<b>Neil Warnock</b>
6		5	4
<b>Trevor Swift</b>		<b>David Watson</b>	<b>Neil Hague</b>
	3		2
	<b>Dennis Leigh</b>		<b>Bill Houghton</b>
		1	
		<b>Roy Tunks</b>	

Colours: Shirts Red  
Shorts Red

Manager: JIMMY McANEARNEY

## ROTHERHAM UNITED

Result: LUTON TOWN

ROTHERHAM UNITED