



LUTON TOWN

FOOTBALL CLUB

Telephone: Luton 23151



DIVISION III

v WALSALL

Saturday 11 April 1970 Kick-off: 7.45 pm

Official Programme: Price 1/-

FIXTURES 1969-70

DIVISION THREE

Date	Opponents	Attendance	Result
August			
Sat 9	BARROW	12,080 (H)	3-0
Wed 13	FLC1 Peterboro	10,249 (A)	1-1
Sat 16	Bournemouth	9,735 (A)	1-0
Tues 19	FLC1 PETERBORO'	13,105 (H)	5-2
Sat 23	ORIENT	13,761 (H)	3-2
Tues 26	HALIFAX T.	13,759 (H)	1-1
Sat 30	Gillingham	7,792 (A)	2-0
September			
Tues 2	FLC2 MILLWALL	17,372 (H)	2-2
Sat 6	BRISTOL R.	15,198 (H)	4-0
Mon 8	FLC2 Millwall	14,125 (A)	1-0
Sat 13	Bradford City	10,851 (A)	1-1
Tues 16	Southport	4,003 (A)	3-0
Sat 20	SHREWSBURY	15,396 (H)	2-2
Tues 23	FLC3 Sheffield U.	16,884 (A)	0-3
Sat 27	Plymouth Argyle	14,111 (A)	3-1
Tues 30	Walsall	7,557 (A)	3-1
October			
Sat 4	STOCKPORT	15,944 (H)	2-0
Tues 7	BOURNEMOUTH	18,065 (H)	0-0
Sat 11	Doncaster Rovers	17,380 (A)	0-2
Sat 18	Brighton & H.A.	18,722 (A)	2-1
Sat 25	TORQUAY U.	16,087 (H)	1-1
November			
Sat 1	Rotherham U.	8,727 (A)	1-1
Sat 8	BARNSELY	17,442 (H)	1-1
Sat 15	FAC1 Bournemouth	7,362 (A)	1-1
Tues 18	FAC1 BOURNEM'TH	13,384 (H)	3-1
Sat 22	ROCHDALE	15,876 (H)	2-0
Tues 25	FULHAM	16,485 (H)	1-0
December			
Sat 6	FAC2 Hillingdon	9,333 (A)	1-2
Sat 13	BRADFORD C.	11,857 (H)	5-0
Fri 26	Orient	17,619 (A)	0-1
Sat 27	GILLINGHAM	17,402 (H)	1-2
1970			
January			
Sat 10	Shrewsbury Town	4,206 (A)	1-5
Sat 17	PLYMOUTH A.	12,358 (H)	0-2
Sat 24	Bury (4)	6,893 (A)	3-1
Sat 31	Stockport County	3,922 (A)	1-1
February			
Sat 7	DONCASTER (5)	12,876 (H)	4-0
Tues 10	Bristol Rovers	13,297 (A)	0-3
Sat 14	Barrow	3,843 (A)	1-2
Sat 21	Torquay United (6)	6,819 (A)	2-2
Sat 28	BRIGHTON	17,584 (H)	1-1
March			
Tues 3	TRANMERE R.	11,368 (H)	2-0
Wed 11	Reading	18,783 (A)	1-0
Sat 14	MANSFIELD (SF)	12,690 (H)	2-2
Tues 17	BURY	12,751 (H)	0-0
Sat 21	Tranmere Rovers	4,035 (A)	2-3
Fri 27	ROTHERHAM U.	14,315 (H)	2-1
Sat 28	READING	14,401 (H)	5-0
Mon 30			
Tues 31	Barnsley	9,760 (A)	1-2
April			
Sat 4	Halifax Town	3,482 (A)	0-0
Mon 6	BEDFORD TOWN	2,028 (H)	4-3
	Beds. Pro. Cup Final		
Wed 8	Fulham	1,8987 (A)	1-0
Sat 11	WALSALL	(H)	(H)
Tues 14	SOUTHPORT	(H)	(H)
Mon 20	Mansfield	(A)	(A)
Sat 25	Rochdale	(A)	(A)

FOOTBALL COMBINATION

Date	Opponents	Attendance	Result
August			
Sat 16	PETERBORO'	1,326 (H)	4-2
Sat 23	Norwich City	(A)	0-0
Sat 30	TOTTENHAM H.	1,683 (H)	2-2
September			
Sat 6	Gillingham	(A)	2-3
Sat 13	BOURNEMOUTH	1,124 (H)	3-3
Tues 23	Northampton Town	(A)	1-5
Sat 27	SWINDON T.	1,306 (H)	2-0
October			
Wed 1	Crystal Palace	(A)	1-2
Sat 11	BIRMINGHAM	1,309 (H)	1-2
Sat 25	Tottenham H. (Cup)	(A)	1-3
November			
Sat 1	SOUTHAMPTON	1,239 (H)	5-3
Tues 4	Queens Park Rangers	(A)	5-1
Sat 8	Leicester City	(A)	0-4
Sat 22			
December			
Sat 13	Bristol Rovers	(A)	1-1
Tues 16	BIRMINGHAM (Cup)	491 (H)	3-0
Sat 20	Arsenal	(A)	0-5
Sat 27	Northampton (Cup)	(A)	2-2
Tues 30	Walsall (Cup)	(A)	
1970			
January			
Sat 3	LEICESTER C (Cup)	742 (H)	0-4
Mon 12	WALSALL (Cup)	619 (H)	1-1
Sat 17	Plymouth Argyle	(A)	0-1
Tues 20	TOTTENHAM (Cup)	1,046 (H)	0-2
Sat 24	READING	739 (H)	2-0
Tues 27	Birmingham (Cup)	(A)	1-2
Sat 31	N'HTON (Cup)	1,006 (H)	4-1
February			
Sat 7			
Mon 16	CHELSEA	1,907 (H)	1-0
Sat 21	SWANSEA T.	937 (H)	3-1
Wed 25	Cardiff City	(A)	0-3
Sat 28			
March			
Sat 14			
Sat 21	West Ham United	(A)	0-2
Mon 23	Leicester C.	(A)	1-1
April			
Thurs 2	Fulham	(A)	2-1
Sat 4	BRISTOL C.	808 (H)	3-0
Wed 8	IPSWICH T.	360 (H)	1-1
Wed 15	OXFORD U.	(H)	(H)

© Football League Ltd, 1969

Published by

Luton Town Football and Athletic Company Limited,
Kenilworth Road, Luton.

Printed by

White Crescent Press Limited, Crescent Road, Luton.
Telephone Luton 23122



LUTON TOWN FOOTBALL AND ATHLETIC CO, LTD

KENILWORTH ROAD, LUTON, BEDFORDSHIRE
TELEPHONE 0582 23151

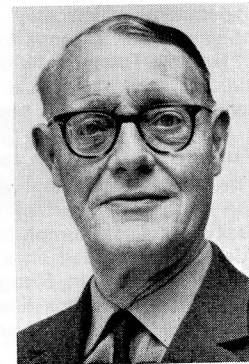
Established 1885 Incorporated 1897
First Professional Side Season 1891-1892
Football League Division III Champions 1936-37
Football League Division II Runners-up 1954-55
FA Challenge Cup Finalists 1958-59
Football League Division IV Champions 1967-68

OFFICIAL PROGRAMME 11 APRIL 1970

Directors: A. T. HUNT, *Chairman*, L. S. HAWKINS, *Vice-Chairman*,
J. A. C. BAIN, R. I. BURR, T. HODGSON,
ERIC MORECAMBE, H. RICHARDSON
Chief Executive and Manager: Alec Stock Secretary: R. Readhead
Hon Medical Officers: Dr C. J. Buckingham, MB, BS and
Dr P. J. Burrows, MB, BCh, DObst, RCOG
Hon Dental Surgeon: A. Hargreaves, Esq
Hon Solicitor: E. Waller, Esq Auditors: Messrs Keens, Shay, Keens & Co

New Series
Vol. 1 No. 29

Eric Pugh's Page



It is really most amazing how the Town's hopes of promotion have blown hot and cold during the past few weeks.

After the unlucky defeat at Barnsley last week, most people were prepared to write off their chance, especially as it was followed by only one point from Halifax when two seemed to be absolutely necessary.

Then, came the fine victory at Fulham last Wednesday to put them right bang in the reckoning again and if they can maintain consistency over the remaining four matches, then it will be Second Division football again at Kenilworth Road next season.

May need seven points out of eight

At the same time, it is a stiff task that faces them because it looks as if seven points out of the last eight may well be necessary for them to finish in the top two.

With the programme ending with two tough away games at Mansfield and Rochdale, it is a tall order, but if the team

plays with the same efficiency and determination as they showed in completing a notable double over Fulham, then the task can be accomplished.

No leeway for more slips at home

It goes without saying that there must be no slips in the two home matches, such as those that have retarded progress this season and caused the loss of unexpected points which would have been extremely valuable at this juncture.

First comes tonight when a big atten-

dance is expected for the visit of Walsall, who have had a difficult season from more than one point of view.

Unable to use pitch for weeks

For one thing, their pitch was so badly waterlogged that it was impossible to play on it for some weeks which resulted in a heavy backlog of matches which they are now in the process of playing off.

This, in fact, will be their third fixture this week because they began it with a rousing home win over Orient, to halt, temporarily, no doubt, the London club's drive towards the Third Division title.

Walsall confident of giving town a fight

Then, on Thursday, they were at Rochdale where points are never easy to come by, but they are playing with more confidence since they acquired more thrust up front and their manager, Bill Moore, speaking in mid-week, was confident of giving the Town a real run for their money.

Playing a League match on the night of the Cup Final, is something of an experiment which may be followed by other clubs in seasons to come. In point of fact, the Town tried it before, with some success, and this could well become a regular feature of their programme.

Fulham victory was tactical triumph

The victory at Fulham which counted as the ninth away win of the season was really a tactical triumph because Manager Alec Stock decided on a change of plan which led to Alan Slough forsaking the midfield role he has filled recently, and taking on the job of sweeper at the back of the defence.

So effectively did it work that Fulham's normally free scoring attack was held completely and the number of times when they threatened to score could be comfortably counted on the fingers of one hand.

Few qualms after the early goal

In fact, despite the narrowness of their lead which they gained in the 10th minute, there were few qualms about the eventual result.

No doubt, the scoring of the winning goal, his 23rd in the League this season and his 26th in all first team games gave

Malcolm Macdonald a great deal of satisfaction since it came against the club which allowed him to leave during the summer in return for what is now beginning to appear to be a bargain fee.

John Ryan another to be pleased

Another who was thoroughly pleased with the outcome was John Ryan, who was given a free transfer by the Londoners at the end of last season and who was able to demonstrate in the fullest sense that they made a mistake in not retaining him longer.

It is a tribute to the drawing power of the Town and an indication of the large following they took to London, that Fulham's attendance of 18,987 was their largest in the League this season.

Not only that, but it was the biggest to have seen the Town in action, just topping the 18,783 that was drawn to the promotion clash at Reading recently.

Southport will be here on Tuesday

On the face of things, after the success on Wednesday, the Town should draw a gate approaching the same number tonight, but, of course, the occasion must be regarded as somewhat unpredictable.

On Tuesday, there is another home match – and the last of the season – when Southport, still fighting a grim battle against relegation, will be our opponents.

Break before the away matches

Again this will not be easy, but such is the mood of the players at the moment, that a clear-cut victory should result.

After that comes a welcome break before facing Mansfield Town at Field Mill on Monday week and then the final, and what could be the absolutely vital meeting with Rochdale at Spotland.

OUR COVER PICTURE

Alan Slough on the point of making contact with the ball for the Town's vital winning goal against Rotherham United on Good Friday. Viv Busby is in the foreground.

Picture: *Luton News and Green 'Un.*



CONNELLS

Auctioneers, Surveyors
Valuers and Estate Agents

5, Upper George Street, Luton

Telephone: 31261 for

Houses and Bungalows

COUNTRY HOUSES, COMMERCIAL AND
INDUSTRIAL PREMISES, COMPULSORY
PURCHASE NEGOTIATIONS IN

Luton and Surrounding Districts

Branch Offices throughout
HERTFORDSHIRE, BEDFORDSHIRE, BUCKINGHAMSHIRE
and at 62, GROSVENOR STREET, LONDON, W.1.



THE ONE STOP SHOPPING CENTRE for

Hardware, Electrical, Men's Wear, Fuel, Catering,
Footwear, Bookshop, Drapery, Furnishing, Toys &
Sports, Grocery, Greenfruit and Butchery with Credit
Facilities to suit your requirements.

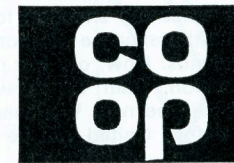
PLUS DIVIDEND STAMPS

SUPERSTORE

4 NEW BEDFORD ROAD

LUTON. Tel: 21171

LUTON CO-OPERATIVE SOCIETY LTD



From Bob's Office

Obviously, anagrams are popular with supporters because the number of entrants for our last competition was the best yet.

Answer was 'Raymond Whittaker,' and the first correct solution opened was that submitted by G. Taylor, 44 Mowbray Crescent, Stotfold, who receives the prize of a watch.

Several of those who solved the problem, sent in 'Ray Whittaker' as their answer, but, of course, all the letters have to be used up and these had to be disqualified.

Here is another one

For our last competition of the season, we have mixed up the letters of the name of one of the players on our staff and the anagram is, 'March Hare In Oils.'

Entries must be accompanied by a fee of sixpence, and the winner will be notified by post and also through the columns of *The Luton News* on Thursday week.

Jack Bannister receives award

Congratulations to Jack Bannister, our left-back, who has been chosen to receive a Gillette award for sportsmanship on the field and this is being made to him before the start of tonight's match.

With Walsall's fixture list heavily complicated by unplayed games through their pitch being unfit for so many weeks, they hit upon a novel idea to get out of the way our Reserves' visit to them which was postponed on two occasions.

Counts for points in combination too

They suggested and the Football Combination have agreed that whatever the result of tonight's match shall count in the Combination table, too.

That eases the situation for them and saves us the expense of another trip into the midlands. Now, our last match in the Combination, from which we have resigned, will be next Wednesday evening when Oxford United will be the visitors.

Competition is stronger now

Next season, our reserves will be operating in the London Mid-week League which



Bob Readhead, Secretary

is now a stronger competition than it was during our last spell in it.

Supporters are reminded that there is still time to take part in the package deal that is being offered to those who want to accompany the team on their tour of Spain at the end of the season.

Arrangements are for a chartered plane to leave Luton Airport on the night of 2-3 May for Valencia and thence by road to the headquarters at Benidorm.

All in charge for supporters is £40 18s, plus 9s taxes. Those requiring a single room should add £4 to the total. I shall be glad to accept bookings, together with a deposit of £5.

Last match here is next Saturday

Last match of the season on this ground comes next Saturday when Leighton Town meet Totternhoe in the final of the Bedfordshire Senior Cup. There was also to be a match in the morning between the youth teams of Bedfordshire and Huntingdonshire, but this has now been called off.

We invite interested supporters to let us know their likes or dislikes about our new-style programme that has been published during this season, so that we can assess the situation for the next campaign.

If no one writes, we shall assume that everybody is satisfied with the improvement that has been made.



Outside-right. Inside-right.



What makes Viva the 1-litre league leader?

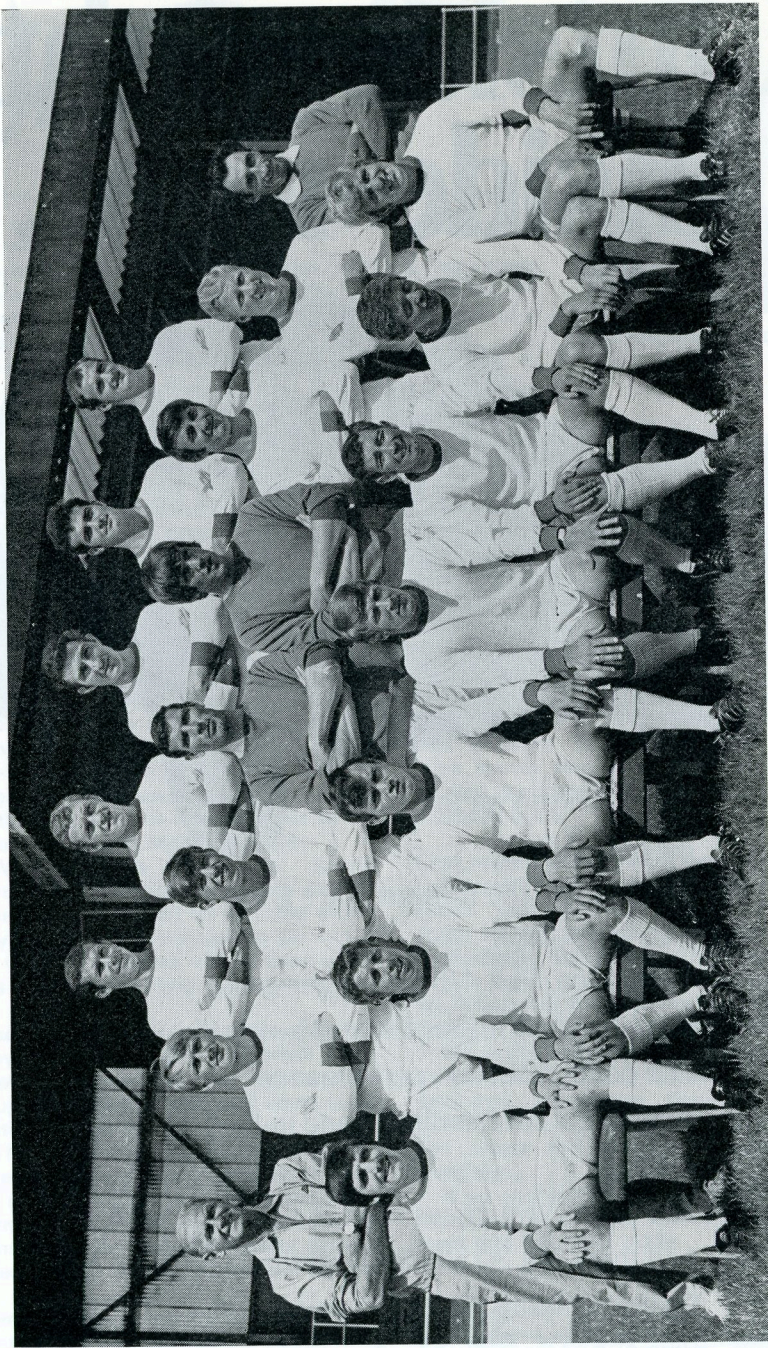
The shape. The forward line's great – so is the back.

The space. Full 4/5 passenger comfort – and luggage-room to match!

The pace. All-action performance, with sports-car handling – and in-built safety.

The price. Viva prices start at £701. And there are 20 all-star performers to choose from. Why don't you join the Viva supporters club?





Back row (left to right): Colin Harrison, Trevor Meath (now Lincoln City), Stan Jones, Mick Evans, Derek Trevis.
 Middle row: Bill Moore (manager), Stan Bennett, Roy Cross, Bob Wesson, Phil Parkes, John Woodward, Frank Gregg, Jimmy MacEwan (trainer).
 Front row: Tommy Watson, Geoff Morris, Nick Atthey, Ken Stephens, Alan Baker, Ray Train, Dave Wilson (now Burnley).

Colin Taylor now in his third spell with Saddlers *By Tony Pullein*

When Colin Taylor moved from Crystal Palace to Walsall earlier this season he created something of a record for it was the third time he had signed for the Saddlers.

And he quickly celebrated his return home by getting among the goals again and is top scorer.

Colin rose to senior status with Walsall initially in 1958-59 and hit 90 goals in his first five seasons – including 33 in the season (1960-61) they won promotion to Division Two – before moving to Newcastle.

He returned just over a year later but moved again, to Palace, in 1968. This season was only a few weeks old when he completed his hat-trick of signings for Walsall.

Woodward had to struggle

There are precious few goals emanating from other members of the attack these days, though John Woodward has scored a few.

Strange to say, Woodward has never been a great success as a striker in League football before.

He started with Stoke City but didn't get many chances in their First Division side and he also had some difficulty in breaking into Aston Villa's side.

Since signing for Walsall during the last close-season he has really come into his own and held a regular place until recently.

Was with the old Stevenage Town

Outside-right Tommy Watson caught the eye when performing with the now extinct Southern League club Stevenage Town.

Peterborough United snapped him up and blooded him in League football in 1965-66 and he linked with Walsall two years ago.

Alan Baker first tasted League soccer with Aston Villa in 1960-61 and totalled almost 100 First Division games before signing for Walsall in 1966. He was level top scorer with 13 League goals in his first season with the Saddlers.

Bennett has topped the 200 mark

Stan Bennett, who has often been lining up with the attack this season, was originally a centre-half who served his apprenticeship with the club.

He got his chance in the first team when former England centre-half Trevor Smith's career was ended by injury and he completed his 200th League appearance for them this season.

Colin Harrison is yet another local discovery. He made the League team in 1964-65 and has made 80 League appearances to date.

Outstanding member of the defence

One of the outstanding members of the Walsall defence is centre-half Stan Jones.

He was a part-timer when he first made the Saddlers' League XI back in 1957-58 but he soon began to attract the big clubs and, in 1960, he moved to West Bromwich Albion.

He enjoyed seven highly successful seasons at The Hawthorns, making about 250 appearances in their First Division side, before re-signing for Walsall in 1967.

Regular member for seven years

Frank Gregg has been a regular member of the defence for seven years and has played more than 250 first-team games for the club.

Left-back Mick Evans has been established for three years and wing-half Nick Atthey has been a permanent member of the side since his debut in 1964-65.

Wing-half Derek Trevis, who joined Walsall last season, began his career with Aston Villa but he didn't make the League grade until moving to Colchester in 1963. But in four years he barely missed a game and he has been a permanent member of the Walsall side since his transfer.

Excellent Goalkeeper

Goalkeeper Phil Parkes – not be be confused with the Wolves' 'keeper of the same name – was introduced to the side last season and has been turning in some excellent performances this term.

(continued on page 18)

Luton's leading newsagents

HOUGHTONS

CONFECTIONERS · TOBACCONISTS
GREETINGS CARD SPECIALISTS

- ★ 16 The Parade, Hill Rise
- ★ 3 Ashwell Parade, Sundon Park
- ★ 82 Putteridge Road, Stopsley
- ★ 253 Birdsfoot Lane
- ★ 150 Sundon Park Road
- ★ Jansel House, Stopsley
- ★ 217 Dunstable Road
- ★ 178 Ashcroft Road, Stopsley
- ★ 8 Hillborough Crescent, Houghton Regis

*Whenever you are near
— pay us a visit
We will be pleased
to serve you*

buy your
EVENING **POST**
with full-time
results outside
the ground
after the match



RICHARDSON and BOTTOMS

LIMITED

*Builders
and
Contractors*

107, BISCOT RD.

Luton

Telephone: 25628

Football League Review



ONE SHILLING

THE OFFICIAL JOURNAL OF THE FOOTBALL LEAGUE

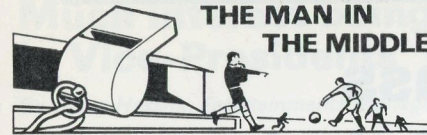




ALAN BALL

Everton

Four years ago Alan Ball earned the title "Mr. perpetual motion" after his non-stop displays for England in the World Cup . . . and he's hardly stopped running ever since. He seems certain to play a big part in the defence of the trophy this June.



CHARLES NICHOLLS

Charles Nicholls probably travels further than any other referee in the course of his Football League duties.

No other referee lives in a more cut off district so far as Football League members are concerned, than his Plymouth home in Devon, where he lives with his wife and 17 years-old daughter.

'Travelling doesn't worry me a bit,' he said. 'In fact I enjoy it. So long as the Football League doesn't complain, I am sure I don't.'

Had serious ankle injury

Mr Nicholls was a player in local senior

football until a serious ankle injury forced him to retire in 1950.

The Plymouth and District League gave him his first refereeing duties, and then he moved into Western League circles, before being appointed to the Football League linesman's list in 1962.

Four years later he was promoted to the supplementary referees' list and, this season, stepped up to the full list.

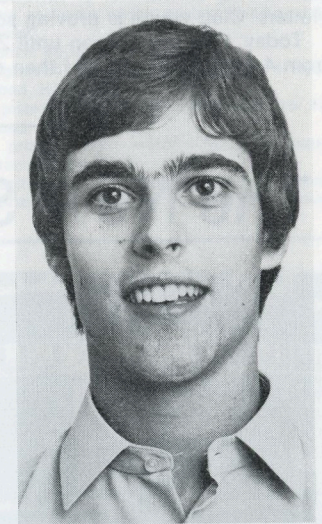
On the line in a semi-final

His biggest games so far were a European Cup match between BK Odense (Denmark) and Real Madrid and the Football League v the Irish League at Plymouth in 1966.

He was a linesman on both occasions. He has also been a linesman for an FA Cup semi-final.

He is employed as a technical officer with the Ministry of Defence at Devonport Dockyard.

Two youngsters hit the jackpot

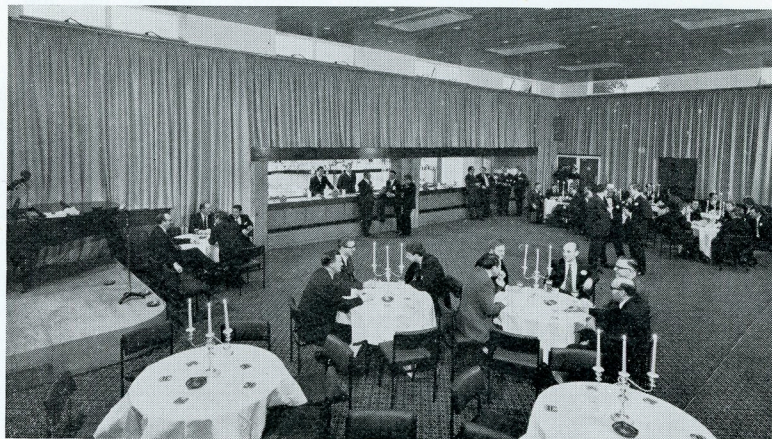


Two youngsters who have made a considerable impact after forcing their way into the Town's first team for the Easter matches.

They are (left) 19-years-old goalkeeper, Alan Starling, who has already given hints of a brilliant future by the accuracy of his positioning and his confident handling of the ball.

There is high promise too, about 20-years-old Viv Busby, former Wycombe Wanderers inside-forward, who forced his way on to the League scene after only eight professional games with the reserves.

Two in a class of their own



Comfort for all manner of functions – that is the motto of the new, luxurious Hatters' Club which is proving so popular.

Today, the club is open until 2.55 p m for drinks and snacks and re-opens from 4.45 to 5.30 p m and then continuously from 6 o'clock until 11.30 p m.

The New Sports Centre



Our new Sports Centre at 231 Dunstable Road which offers a comprehensive list of sports goods, toys and games at competitive prices.

Much interest being taken in Vice-Presidents' Club

By Harry Haslam, Entertainments Manager

Considerable interest has been taken in the announcement that we are to form a Vice-Presidents' Club for next season and there seems that there will be no difficulty in reaching the limited membership of 200 which we envisage at the moment.

Annual subscription which gives a member a reserved seat in a special section of the stand and also membership of a luxurious, fully licensed club, will be £25.

Enquiries should be made at the Luton Town Sports Centre, 231 Dunstable Road, Luton, where applications will be accepted.

Train has been booked for Rochdale

It is impracticable to run a chartered train to Mansfield on Monday week, but we shall round off the season in style by running one to Rochdale a fortnight today.

Return fare will be 22s 6d and the train will leave Luton at 9.05 a m, Bedford 9.25, arriving Rochdale 1.07 p m.

Return journey begins at 5.47 p m, arriving Bedford 9.30 and Luton 10.00 p m. Fans are advised to book early to avoid disappointment.

Could be of vital importance

This could well be a vitally important occasion if the results go in our favour in the meantime, as we confidently expect they will, in which case, there is bound to be a heavy demand for tickets.

Looking ahead to next season, we are looking for first-class living accommodation for single players and I would be pleased if those who are in a position to offer it would contact me.

This information is being given in good time because it is often difficult to arrange suitable board and lodging at short notice.



BONANZA WINNERS

Draw made at home match against Rotherham on Good Friday.

- 1st prize: 3775, £10 – Mr Mockitt, 24 Sherwood Road.
- 2nd prize: 0607, watch – Mr Steed, 101 Birdsfoot Lane.
- 3rd prize: 2246, watch – unclaimed.
- 4th prize: 1700, watch – Mr D. H. Caswell, 25 Dewsbury Road.
- 5th prize: 4019, 1 Odeon cinema seat – unclaimed.
- 6th prize: 0434, 1 Odeon cinema seat – Mr Darby, 25 Chapple Close, Taddington.

Drawn at home match against Reading on Easter Saturday.

- 1st prize: 4508, £10 – unclaimed.
- 2nd prize: 4121, watch – Mr Barrett, 4 Hyde View Road, Harpenden.
- 3rd prize: 4893, watch – Mr Oliver, 15 Fieldside Road, Pulloxhill.
- 4th prize: 3636, watch – Mr Woodhouse, 54 Bramingham Road.
- 5th prize: 3299, 1 Odeon cinema seat – unclaimed.
- 6th prize: 4748, 1 Odeon cinema seat – unclaimed.

LUTON TOWN FC POOL THIS WEEK'S LUCKY NUMBERS

- Saturday:** £20-16273; £15-35129; £5-49877; £5-27483; £2-15309; £2-04218; £1-36745.
- Monday:** £20-42264; £15-07101; £5-14568; £5-31112; £2-22671; £2-37504; £1-11382.
- Tuesday:** £20-09155; £15-45008; £5-19534; £5-05005; £2-40108; £2-23835; £1-26011.
- Wednesday:** £20-32592; £15-28776; £5-25167; £5-01280; £2-13091; £2-47314; £1-34628.
- Thursday:** £20-21910; £15-30364; £5-07035; £5-41239; £2-20782; £2-02573; £1-15974.
- Friday:** £20-08327; £15-17981; £5-44813; £5-39073; £2-00196; £2-46521; £1-10721.



Coming Matches

DIVISION III

TUESDAY, 14 APRIL

LUTON TOWN v SOUTHPORT

KICK-OFF 7.30 p m

Prices of admission

Centre stand 10s, Wing stand 8s, Enclosure, Bobbers' stand, Oak Road terrace 6s (children 3s), Kenilworth Road terrace 5s (children 2s 6d).

FOOTBALL COMBINATION

WEDNESDAY, 15 APRIL

LUTON TOWN v OXFORD UNITED

KICK-OFF 7.30 p m

Prices of admission

Enclosure 2s 6d (children 1s 6d), Stand seats 6d extra.



WHITBREAD TANKARD
cool,
clear, refreshing

Available in all Bars

LATEST RESULTS

DIVISION III

Luton Town 2 Rotherham United 1

Starling: Ryan, Bannister; Slough, Branston, Moore; Busby, Macdonald, Allen, Keen, French (Harrison).

Scorers: Allen, Slough.

Luton Town 5 Reading 0

Starling: Ryan, Bannister; Slough, Branston, Moore; Collins, Busby, Macdonald, Keen, Harrison.

Substitute: Tees.

Scorers: Macdonald (3), Busby, Harrison.

Barnsley 2 Luton Town 1

Starling: Ryan, Bannister; Slough, Branston, Moore; Collins, Busby, Macdonald, Keen, Harrison.

Substitute: Allen.

Scorer: Keen.

Halifax Town 0 Luton Town 0

Starling: Ryan, Bannister; Slough, Branston, Moore; Collins, Busby, Macdonald, Keen, Harrison (Phillips).

Fulham 0 Luton Town 1

Starling: Ryan, Bannister; Keen, Branston, Moore; Slough, Busby, Macdonald, Allen, French.

Substitute: Collins.

Scorer: Macdonald.

FOOTBALL COMBINATION

Fulham 1 Luton Town 2

Davie; Dougan, Shanks; Guild, Nicholl, Delgado; Hooper, Allen, Tees, Wainwright, Phillips.

Substitute: Thompson.

Scorers: Wainwright (pen), Phillips.

Luton Town 3 Bristol City 0

Davie; Dougan, Shanks; Guild, Nicholl, Delgado; Hooper, Thompson, Tees, Wainwright, Hipwell.

Substitute: Sorbie.

Luton Town 1 Ipswich Town 1

Read; Dougan, Shanks; Delgado, Nicholl, Guild; Hooper (Thompson), Tees, Phillips, Wainwright, Hipwell.

Scorer: Phillips.

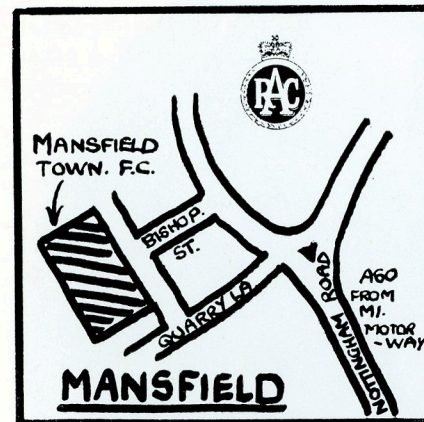
BEDFORDSHIRE PROFESSIONAL CUP FINAL

Luton Town 4 Bedford Town 3

Davie; Dougan, Slough; Shanks, Delgado, Guild; Phillips, Allen, Tees, Thompson, (Hipwell), French.

Scorers: Phillips (3), Tees.

HOW TO GET THERE



MANSFIELD TOWN v LUTON TOWN MONDAY, 20 APRIL

LUTON

Leave by A505 as for Dunstable

Join M1 3 miles

Newport Pagnell Services 21 miles

Watford Gap Service Area 45 miles

Leicester Forest Service Area 68 miles

Trowell Services 95 miles

Intersection No. 27 104 miles

Follow signs 'A608 Mansfield'

At 1½ m. on, turn L onto A611

New Annesley 107 miles

At 4 m. on, turn L onto A60 into:

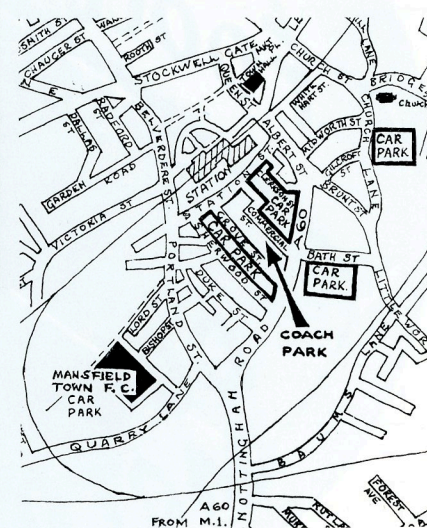
MANSFIELD 113 miles

(See Plan)



WHERE TO PARK AT MANSFIELD

In view of the fact that it is expected that we shall have a strong following to Mansfield, the local police have asked that we should publish this map showing the parking areas adjacent to the Field Mill ground.

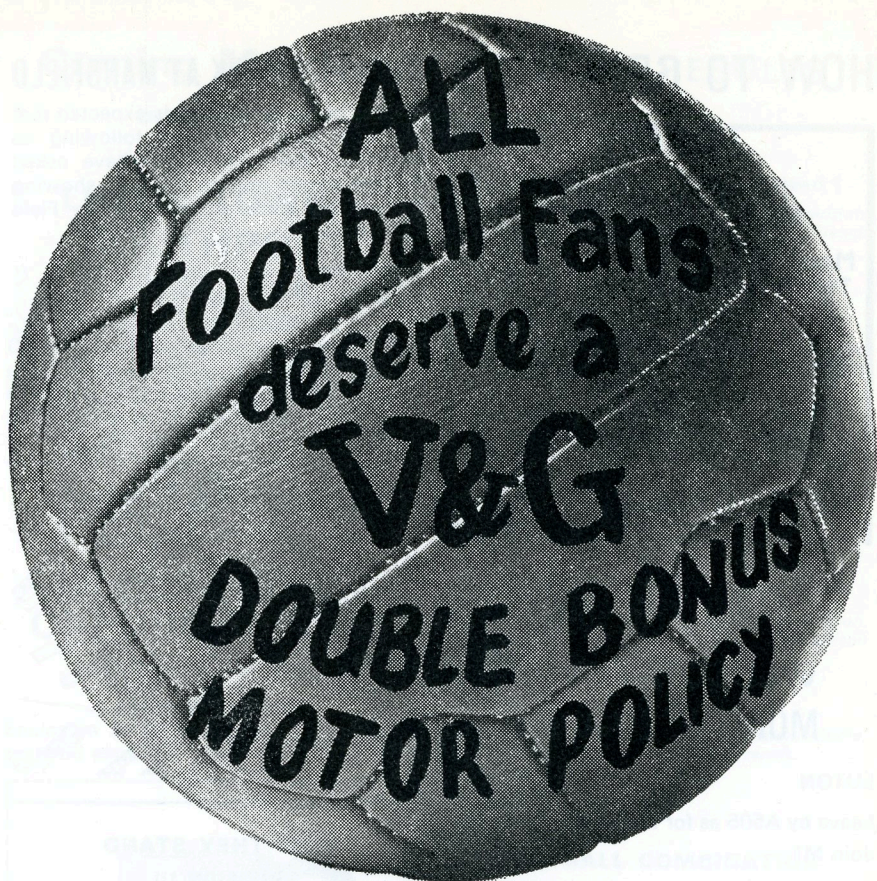


HOW THEY STAND

DIVISION III

	P	W	D	L	F	A	P
Bristol Rovers	..	44	20	16	8	77	52 56
Orent	..	41	22	11	8	59	30 55
Brighton	..	45	23	9	13	56	41 55
LUTON TOWN	..	42	20	13	9	71	42 53
Barnsley	..	45	19	14	12	67	58 52
Reading	..	43	20	11	12	77	71 51
Fulham	..	42	17	15	10	76	52 49
Mansfield Town	..	41	19	9	13	64	44 47
Bradford City	..	43	17	12	14	57	47 46
Rochdale	..	41	18	9	14	64	50 45
Torquay	..	44	13	17	14	59	58 43
Doncaster Rovers	..	44	16	11	17	50	53 43
Halifax Town	..	43	14	15	14	46	58 43
Rotherham United	..	45	14	14	17	59	53 42
Shrewsbury Town	..	42	11	18	13	57	59 40
Bury	..	45	15	10	20	74	79 40
Plymouth	..	43	15	10	18	53	59 40
Walsall	..	40	14	10	16	45	60 38
Bournemouth	..	43	11	14	18	47	69 36
Tranmere Rovers	..	41	11	14	16	48	69 36
Southport	..	41	13	9	19	44	53 35
Barrow	..	46	8	14	24	46	81 30
Gillingham	..	39	10	9	20	42	58 29
Stockport County	..	43	6	10	27	27	69 22

Up to and including Wednesday 8 April



**THE V&G
DOUBLE BONUS
MOTOR INSURANCE POLICY
GIVES FAIRER TERMS
TO EVERY DRIVER**

For further information contact your local officially appointed V & G Insurance Broker, or write or phone the address below.

**V&G THE VEHICLE & GENERAL
GROUP OF
INSURANCE COMPANIES**

Group Headquarters,
Administration & Operations;
Bushey House,
High Street, Bushey,
Hertfordshire.
Tel: 01-950 4311.

THE VEHICLE & GENERAL INSURANCE CO. LTD.
LIFE, CASUALTY & GENERAL INSURANCE CO. LTD.
AUTOMOBILE & GENERAL INSURANCE CO. LTD.
THE GENERAL & COMMERCIAL MOTOR INSURANCE CO. LTD.
METROPOLITAN GENERAL INSURANCE CO. LTD.
WORLD AUXILIARY INSURANCE CORPORATION LTD.
PIONEER LIFE ASSURANCE CO. LTD.

	APPEARANCES				GOALS			
	FL	FAC	FLC	FC	FL	FAC	FLC	FC
<i>Goalkeepers</i>								
DAVIE, A.	31	3	2	6	—	—	—	—
READ, A.	6	—	3	15	—	—	—	1
STARLING, A.	5	—	—	15	—	—	—	—
<i>Full Backs</i>								
BANNISTER, J.	37	3	5	1	—	—	—	—
DOUGAN, M.	6	—	3	8	—	—	—	2
HOOPER, G.	—	—	—	19	—	—	—	—
JARDINE, F.	10	1	—	20	—	—	—	—
RYAN, J.	32	3	2	8	2	—	—	—
SHANKS, D.	—	—	—	9	—	—	—	—
LOVERIDGE, D.	—	—	—	7	—	—	—	—
<i>Half Backs</i>								
BRANSTON, T.	15	2	5	17	—	—	1	—
DELGADO, A.	—	—	—	8	—	—	—	—
KEEN, M.	42	3	5	—	3	—	—	—
GUILD, A.	—	—	—	31	—	—	—	4
MOORE, J.	19	—	1	18	—	—	—	—
NICHOLL, C.	28	1	—	7	2	—	—	—
SLOUGH, A.	41	3	5	2	4	—	—	—
THOMPSON, P.	—	—	—	4	—	—	—	1
WAINWRIGHT, R.	—	—	—	28	—	—	—	2
<i>Forwards</i>								
ALLEN, K.	35	3	5	5	7	—	2	1
BUSBY, V.	5	—	—	8	1	—	—	3
COLLINS, J.	37	3	3	3	9	2	—	1
FRENCH, G.	36	3	5	1	4	—	—	—
HARRISON, M.	11	1	—	18	4	—	—	6
LEWIS, B.	6	—	2	8	—	—	2	4
MacDONALD, M.	42	3	5	2	23	1	2	4
PHILLIPS, P.	5	—	—	27	—	—	—	15
SHEFFIELD, L.	6	—	5	6	—	—	2	4
STEVENSON, M.	—	—	—	7	—	—	—	2
TEES, M.	31	3	1	4	11	2	—	—
SPARKES, N.	—	—	—	2	—	—	—	—
TUFFS, R.	—	—	—	1	—	—	—	—
ADAIR, K.	—	—	—	1	—	—	—	—
LEE, R.	—	—	—	3	—	—	—	—
HIPWELL, R.	—	—	—	20	—	—	—	—
FOSSEY, P.	—	—	—	10	—	—	—	1
SORBIE, R.	—	—	—	5	—	—	—	—
OPPONENT	—	—	—	—	1	—	—	1
AMATEURS	—	—	—	4	—	—	—	—

FL - Football League; FAC - FA Cup; FLC - Football League Cup; FC - Football Combination



One that got away! John Collins hooks the ball into the Reading net, but the verdict of the referee went against him and the goal was disallowed.

Picture: *Luton News and Green 'Un.*

(Tony Pullein continued from page 9)

Walsall, whose first visit to Luton for a League game was way back in 1898, have won only twice here. This is our League record against them:

	P	W	D	L	F	A	Pts
Home	13	10	1	2	33	13	21
Away	14	4	2	8	8	32	10
	27	14	3	10	41	45	31

Settled by an early goal

Last season's game was settled by a goal in the fifth minute:

LUTON (1) 1 WALSALL (0) 0
 Rioch. 15,205

Luton: Davie; Dougan, Bannister; Slough, Branston, Moore; French, Keen, Lewis, Rioch (Allen), Whittaker.

Walsall: Wesson; Gregg, Evans; Atthey, Jones, Bennett; Stephens, Trevis, Wilson, McMorran (Baker), Morris.

Football Association Diary

The FA Diary containing Football League fixtures for season 1970-71, will be available during the first fortnight in August.

Copies may be obtained from the Football Association, 22 Lancaster Gate, London W2, price 6s.



New 1970 range by Vauxhall

bearings by Skefko

SKF

*The Skefko Ball Bearing Company Limited
 Luton, Bedfordshire*

BALL DONORS: TOM AND ALF
'THE FAVOURITE', SUNDON PARK

LUTON TOWN

Colours: Shirts White
Shorts Black

Coach: JIMMY ANDREWS

1
Alan Starling

2
John Ryan

3
Jack Bannister

4
Mike Keen

5
Terry Branston

6
John Moore

7
Alan Slough

9
Malcolm Macdonald

11
Graham French

8
Viv Busby

10
Keith Allen

Sub: **John Collins**

Referee
C. H. NICHOLLS
(Plymouth)



Linesmen
R. N. MORPHEW (*Ipswich*)
Red Flag
D. F. POND (*Chelmsford*)
Yellow Flag

Sub:

10
Alan Baker

8
Derek Trevis

11
Geof Morris

9
Jimmy Seal

7
Colin Taylor

6
Nick Atthey

5
Stan Jones

4
Stan Bennett

3
Mick Evans

2
Colin Harrison

1
Phil Parkes

Colours: Shirts Red
Shorts Red

Manager: BILLY MOORE

WALSALL

Result: LUTON TOWN

WALSALL