



LUTON TOWN

FOOTBALL CLUB

Telephone: Luton 23151



DIVISION III

v SOUTHPORT

Tuesday 14 April 1970 Kick-off: 7.30 pm

Official Programme: Price 1/-

FIXTURES 1969-70

DIVISION THREE

Date	Opponents	Attendance	Result
August			
Sat 9	BARROW	12,080 (H)	3-0
Wed 13	FLC1 Peterboro	10,249 (A)	1-1
Sat 16	Bournemouth	9,735 (A)	1-0
Tues 19	FLC1 PETERBORO'	13,105 (H)	5-2
Sat 23	ORIENT	13,761 (H)	3-2
Tues 26	HALIFAX T.	13,759 (H)	1-1
Sat 30	Gillingham	7,792 (A)	2-0
September			
Tues 2	FLC2 MILLWALL	17,372 (H)	2-2
Sat 6	BRISTOL R.	15,198 (H)	4-0
Mon 8	FLC2 Millwall	14,125 (A)	1-0
Sat 13	Bradford City	10,851 (A)	1-1
Tues 16	Southport	4,003 (A)	3-0
Sat 20	SHREWSBURY	15,396 (H)	2-2
Tues 23	FLC3 Sheffield U.	16,884 (A)	0-3
Sat 27	Plymouth Argyle	14,111 (A)	3-1
Tues 30	Walsall	7,557 (A)	3-1
October			
Sat 4	STOCKPORT	15,944 (H)	2-0
Tues 7	BOURNEMOUTH	18,065 (H)	0-0
Sat 11	Doncaster Rovers	17,380 (A)	0-2
Sat 18	Brighton & H.A.	18,722 (A)	2-1
Sat 25	TORQUAY U.	16,087 (H)	1-1
November			
Sat 1	Rotherham U.	8,727 (A)	1-1
Sat 8	BARNSELY	17,442 (H)	1-1
Sat 15	FAC1 Bournemouth	7,362 (A)	1-1
Tues 18	FAC1 BOURNEM'TH	13,384 (H)	3-1
Sat 22	ROCHDALE	15,876 (H)	2-0
Tues 25	FULHAM	16,485 (H)	1-0
December			
Sat 6	FAC2 Hillingdon	9,333 (A)	1-2
Sat 13	BRADFORD C.	11,857 (H)	5-0
Fri 26	Orient	17,619 (A)	0-1
Sat 27	GILLINGHAM	17,402 (H)	1-2
1970			
January			
Sat 10	Shrewsbury Town	4,206 (A)	1-5
Sat 17	PLYMOUTH A.	12,358 (H)	0-2
Sat 24	Bury (4)	6,893 (A)	3-1
Sat 31	Stockport County	3,922 (A)	1-1
February			
Sat 7	DONCASTER (5)	12,876 (H)	4-0
Tues 10	Bristol Rovers	13,297 (A)	0-3
Sat 14	Barrow	3,843 (A)	1-2
Sat 21	Torquay United (6)	6,819 (A)	2-2
Sat 28	BRIGHTON	17,584 (H)	1-1
March			
Tues 3	TRANMERE R.	11,368 (H)	2-0
Wed 11	Reading	18,783 (A)	1-0
Sat 14	MANSFIELD (SF)	12,690 (H)	2-2
Tues 17	BURY	12,751 (H)	0-0
Sat 21	Tranmere Rovers	4,035 (A)	2-3
Fri 27	ROTHERHAM U.	14,315 (H)	2-1
Sat 28	READING	14,401 (H)	5-0
Mon 30			
Tues 31	Barnsley	9,760 (A)	1-2
April			
Sat 4	Halifax Town	3,482 (A)	0-0
Mon 6	BEDFORD TOWN	2,028 (H)	4-3
	Beds. Pro. Cup Final		
Wed 8	Fulham	18,987 (A)	1-0
Sat 11	WALSALL	17,173 (H)	3-0
Tues 14	SOUTHPORT		(H)
Mon 20	Mansfield		(A)
Sat 25	Rochdale		(A)

FOOTBALL COMBINATION

Date	Opponents	Attendance	Result
August			
Sat 16	PETERBORO'	1,326 (H)	4-2
Sat 23	Norwich City	(A)	0-0
Sat 30	TOTTENHAM H.	1,683 (H)	2-2
September			
Sat 6	Gillingham	(A)	2-3
Sat 13	BOURNEMOUTH	1,124 (H)	3-3
Tues 23	Northampton Town	(A)	1-5
Sat 27	SWINDON T.	1,306 (H)	2-0
October			
Wed 1	Crystal Palace	(A)	1-2
Sat 11	BIRMINGHAM	1,309 (H)	1-2
Sat 25	Tottenham H. (Cup)	(A)	1-3
November			
Sat 1	SOUTHAMPTON	1,239 (H)	5-3
Tues 4	Queens Park Rangers	(A)	5-1
Sat 8	Leicester City	(A)	0-4
Sat 22			
December			
Sat 13	Bristol Rovers	(A)	1-1
Tues 16	BIRMINGHAM (Cup)	491 (H)	3-0
Sat 20	Arsenal	(A)	0-5
Sat 27	Northampton (Cup)	(A)	2-2
Tues 30	Walsall (Cup)	(A)	
1970			
January			
Sat 3	LEICESTER C (Cup)	742 (H)	0-4
Mon 12	WALSALL (Cup)	619 (H)	1-1
Sat 17	Plymouth Argyle	(A)	0-1
Tues 20	TOTTENHAM (Cup)	1,046 (H)	0-2
Sat 24	READING	739 (H)	2-0
Tues 27	Birmingham (Cup)	(A)	1-2
Sat 31	N'HTON (Cup)	1,006 (H)	4-1
February			
Sat 7			
Mon 16	CHELSEA	1,907 (H)	1-0
Sat 21	SWANSEA T.	937 (H)	3-1
Wed 25	Cardiff City	(A)	0-3
Sat 28			
March			
Sat 14			
Sat 21	West Ham United	(A)	0-2
Mon 23	Leicester C.	(A)	1-1
April			
Thurs 2	Fulham	(A)	2-1
Sat 4	BRISTOL C.	808 (H)	3-0
Wed 8	IPSWICH T.	360 (H)	1-1
Sat 11	Walsall	(A)	3-0
Wed 15	OXFORD U.	(H)	

© Football League Ltd, 1969

Published by
Luton Town Football and Athletic Company Limited,
Kenilworth Road, Luton.

Printed by
White Crescent Press Limited, Crescent Road, Luton.
Telephone Luton 23122



LUTON TOWN FOOTBALL AND ATHLETIC CO, LTD

KENILWORTH ROAD, LUTON, BEDFORDSHIRE
TELEPHONE 0582 23151

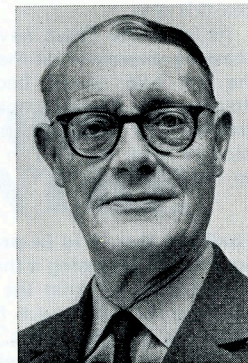
Established 1885 Incorporated 1897
First Professional Side Season 1891-1892
Football League Division III Champions 1936-37
Football League Division II Runners-up 1954-55
FA Challenge Cup Finalists 1958-59
Football League Division IV Champions 1967-68

OFFICIAL PROGRAMME 14 APRIL 1970

Directors: A. T. HUNT, *Chairman*, L. S. HAWKINS, *Vice-Chairman*,
J. A. C. BAIN, R. I. BURR, T. HODGSON,
ERIC MORECAMBE, H. RICHARDSON
Chief Executive and Manager: Alec Stock Secretary: R. Readhead
Hon Medical Officers: Dr C. J. Buckingham, MB, BS and
Dr P. J. Burrows, MB, BCh, DObst, RCOG
Hon Dental Surgeon: A. Hargreaves, Esq
Hon Solicitor: E. Waller, Esq Auditors: Messrs Keens, Shay, Keens & Co

New Series
Vol. 1 No. 30

Eric Pugh's Page



So, we come to the last home match of what has been a crowded, pretty hectic season and, certainly, the situation could scarcely be more piquant.

When all seemed lost so far as promotion was concerned, the Town suddenly swung into the fight with a big chance as the result of their splendid victory over Fulham at Craven Cottage last Wednesday and they made no mistake about following it up with two more home points against Walsall.

Consistency at right time

So, with five points out of the last six, they have hit a consistent patch at exactly the right time and, of course, it will be a major surprise if they do not make it seven out of eight against struggling Southport tonight.

Not that the Town will be taking anything for granted, because they have learned the hard way this season that the lowly teams are capable of springing

surprises and Southport's need for points is as urgent as that of Luton, though, of course, for a vastly differing reason.

Fought a tactical, defensive battle

I can remember one occasion when Southport, with former Town winger, Billy Bingham, then in charge, came here and fought a tactical, defensive battle, often with ten men back in their own penalty area and their reward was to go

away with a point from a goalless draw.

In all probability, the visitors will not be so negative on this occasion but, doubtless, the Town will take heed of the fact that Southport will be as tight as they possibly can in defence because their basic aim must be to force a draw.

Would serve to increase pressure

From the Town point of view, that would put even more pressure than exists already on their two remaining games which are at Mansfield next Monday and Rochdale on Saturday week.

At the moment, taking the position at its worst, they need five points out of the last six to pip Bristol Rovers on goal average, assuming that the west country team collect maximum points from their last two games.

Rovers in action tonight, too

One of these takes place tonight when they meet Gillingham at Eastville and, despite the fact that they have been showing signs of tension, it seems too much to expect the Rovers to do anything but win this one.

At least, the Town have the benefit of knowing exactly what they have to do in the last two games because, by then, Rovers will have completed their programme by visiting Tranmere Rovers, another team urgently in need of points, on Friday evening.

Thrilling run in is in prospect

So, it looks like being a thrilling run in and the portents are that the Town, initially, will take their strongest following of the season to Mansfield.

This is a comparatively easy journey by road, most of it on the M1, and the route, supplied by the RAC is on another page of this programme.

So, too, is a map supplied by the Mansfield police indicating the nearest parking areas to the Field Mill ground.

One train may not be enough for this

Then, if everything hinges on the final match, I should imagine that one chartered train will not be enough to take all the fans who want to be in at the kill to Rochdale, and this could well prove to be

the most exciting ending to a season for many years.

Both these last two matches were postponed earlier in the season through snow which has proved such a bugbear to football during this campaign.

Weather probably did them a favour

One wonders what the situation would have been had they been played on the original dates, but this can only be a matter for conjecture and, as things have turned out, the weather probably did the Town a favour in that they know only too clearly exactly what their target is.

Unfortunately, injuries have begun to disrupt the team plan, with Alan Starling out of tonight's match with knee ligament trouble, and Jack Bannister almost certainly not to be playing either.

Positions for which there is reserve strength

Fortunately, these are two positions for which the Town have adequate reserve strength and the changes should not make much difference to their chances tonight.

The fact that the crowd topped the 17,000 mark on Saturday, suggests that there is a future for League football on the evening of the Cup Final which, at least, gives the clubs an extra date in what has been a harassing season.

Still looking for a 20,000 gate

At the same time, it seems strange that the club have not yet housed a 20,000 gate, although the average has been reasonably satisfactory.

Obviously, with Second Division football available to the local public, there

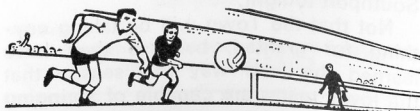
(continued on page 18)

OUR COVER PICTURE

Terry Branston radiates with happiness as the ball goes into the net for the Town's fourth goal against Reading.

Scorer was Viv Busby (not in the picture) whose first goal in League Football it was.

Picture: Luton News and Green 'Un.



CONNELLS

Auctioneers, Surveyors
Valuers and Estate Agents

5, Upper George Street, Luton

Telephone: 31261 for

Houses and Bungalows

COUNTRY HOUSES, COMMERCIAL AND
INDUSTRIAL PREMISES, COMPULSORY
PURCHASE NEGOTIATIONS IN

Luton and Surrounding Districts

Branch Offices throughout

HERTFORDSHIRE, BEDFORDSHIRE, BUCKINGHAMSHIRE
and at 62, GROSVENOR STREET, LONDON, W.1.



THE ONE STOP SHOPPING CENTRE for

Hardware, Electrical, Men's Wear, Fuel, Catering,
Footwear, Bookshop, Drapery, Furnishing, Toys &
Sports, Grocery, Greenfruit and Butchery with Credit
Facilities to suit your requirements.

PLUS DIVIDEND STAMPS

SUPERSTORE

4 NEW BEDFORD ROAD

LUTON. Tel: 21171



LUTON CO-OPERATIVE SOCIETY LTD

From Bob's Office



Bob Readhead, Secretary

To all intents and purposes, this is the end of the season for us, though the Reserves will be at home to Oxford United tomorrow night (7.30 p m) to mark the end of our association with the Football Combination.

On Saturday comes the Bedfordshire Senior Cup Final between Leighton Town and Totternhoe and then, Eddie Hartley and his staff will be free to get going on the job of renovation of the pitch.

Did not do so badly this time

With the extra time available to him, through the earlier ending of the season, Eddie is convinced that he can produce a massive improvement – not that he did at all badly this time because we did not have a first team match postponed because of adverse ground conditions.

Winner of our last competition when the correct solution was 'Raymond Whittaker' was G. Taylor, 44 Mowbray Crescent, Stotfold, and for our last problem of the season, we set another anagram.

This time it is, 'March Hare in Oils' which represents the name of a player who is on our books.

Tell us your likes and dislikes

Winner will be notified by post and the result will also appear in the *Luton News*.

We shall be glad to hear of any likes or dislikes relating to our new look programme which, generally we believe, has proved most popular this season. Any constructive suggestions made by supporters will be considered in relation to next season's production.

Special football film programme

A special programme of football films, on the eve of the World Cup, has been arranged by the Luton Film Theatre and will be shown at the Central Library, Bridge Street next Thursday and Friday.

On the first evening, our manager, Alec Stock, has agreed to introduce the programme which will include the World Cup Final between England and Ger-

many and the 1959 Cup Final between the Town and Nottingham Forest.

On the following evening, the introduction will be made by John Fletcher, director of *The Saturday Men*.

Tickets can be booked in advance

Performances each day start at 7.30 p m, tickets are 5s each and advance bookings can be made at the informational bureau at the Central Library.

This is my last chance to remind supporters that there is still room to take part in the package deal which we have been able to arrange for our tour in Spain at the end of the season.

A chartered plane will leave Luton Airport on the night of 2-3 May for Valencia and transport will be available to Benidorm where the team's headquarters for the four matches will be.

Deposit of £5 is needed

Total outlay is £40 18s, plus 9s airport taxes, which applies to people sharing rooms. If a single room is wanted, £4 should be added to the total for the fortnight's stay. I shall be pleased to arrange bookings on receipt of a deposit of £5.

Return flight will be from Valencia on the night of 16-17 May, arriving in Luton at about 9 a m on the Sunday.



Outside-right. Inside-right.



What makes Viva the 1-litre league leader?

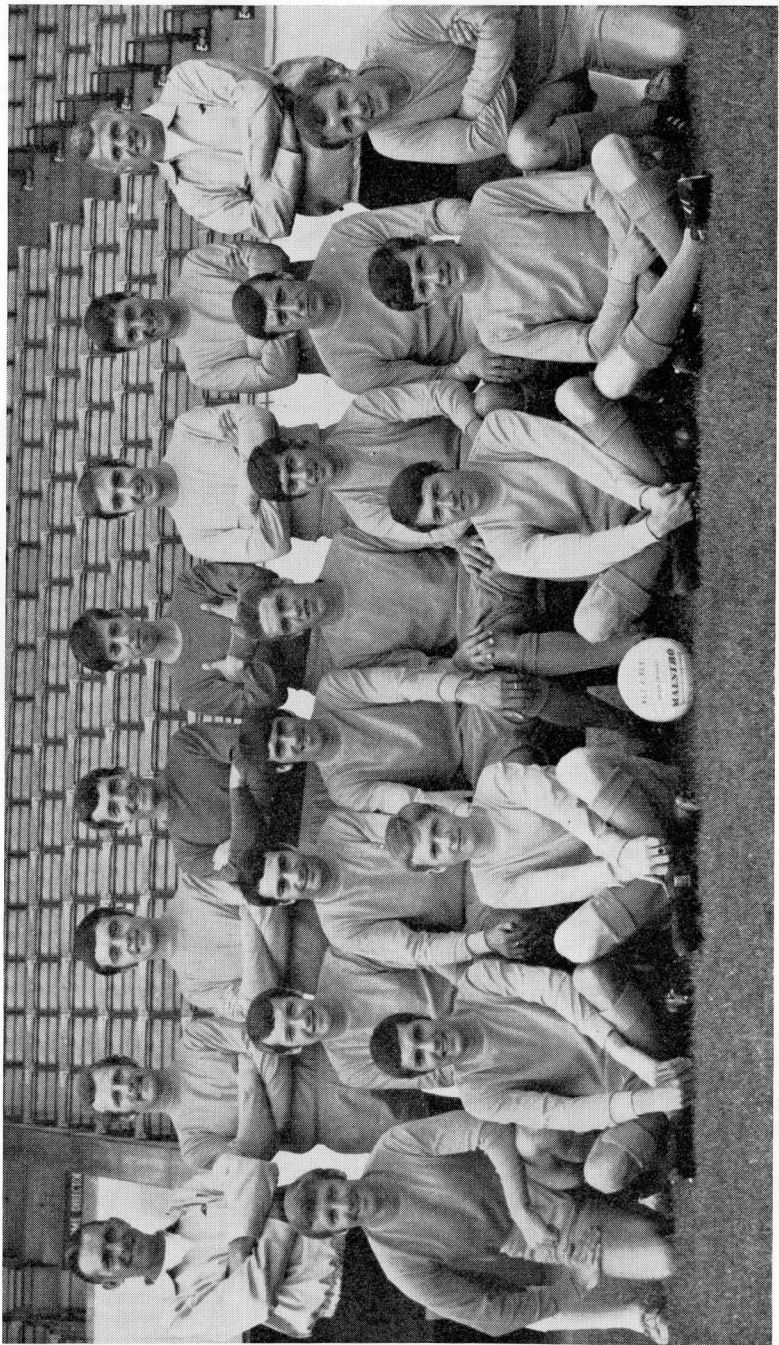
The shape. The forward line's great – so is the back.

The space. Full 4/5 passenger comfort – and luggage-room to match!

The pace. All-action performance, with sports-car handling – and in-built safety.

The price. Viva prices start at £701. And there are 20 all-star performers to choose from. Why don't you join the Viva supporters club?





Back row (left to right): T. Mycock (Trainer left club), Amby, Clarke, Jimmy Aindow, John Armstrong, Bob Wraith, Mal. Russell, Colin Alty, Don McEvoy (now manager of Barrow F.C.). Middle row: (left to right): Eric Harrison, Roy McCarthy, Tony Field, George Andrews (now Shrewsbury), Alan Groves, Alex Russell, Eric Redrobe, Arthur Peat (Player-manager). Front row (left to right): Dave Pearson, Alan Kelley, Keith Pring, Chris Dunleavey.

Southport revived, then faded out again

By Tony Pullein

A spirited rally during February and early March promised to lift Southport clear of relegation problems but, unhappily, the strikers seemed to lose their edge and, as their revival faded, so the Sandgrounders found themselves back in serious trouble again.

Tony Field was one of the men who gave Southport hope. He fired hat-tricks against Reading and Bury, then snapped four into Torquay's net. Apart from these three splendid efforts, Tony has scored only three other goals all season!

Tony was introduced to League football by Halifax in 1963-64 and three years later moved on for a short stay at Barrow before linking with his present club.

Four were signed from Barrow

Field is one of four ex-Barrow boys in the Southport side. Roy McCarthy was given his professional chance at Barnsley, but rarely got any League experience until joining Barrow in 1964-65.

He held a regular place in their side for five years until his transfer to Southport last summer.

Eric Harrison also arrived at Haig avenue during the last close-season following three seasons as a regular in Barrow's defence.

Eric's first taste of League soccer came when he was with Halifax in 1957-58 and he held his place for a long while. Hartlepool signed him in 1964 and he shifted to Barrow two years later. He has now played well over 400 Football League games.

Was faced with a struggle at Forest

Goalkeeper, John Armstrong, was introduced to League football by Barrow in 1958, performing so well in his early matches that Nottingham Forest signed him up within nine months.

Unfortunately for John, though, Forest had the up-and-coming Peter Grummitt also fighting for the spot and he was only occasionally called upon to fill the first team place.

Luck turned when he moved to Portsmouth in 1963 but when that club scrapped its reserve teams he had to share the position with John Milkins. Southport stepped in for his signature in 1967 and he is now playing regularly for them.

Russell - usually in double figures

Though Field is Southport's top scorer

this season, they have another experienced striker in Alex Russell who usually manages to get into double figures most seasons.

In 1964-65, he was the club's leading marksman. Earlier he has served Everton but didn't get into the League team at Goodison.

Wing-half Arthur Peat was a colleague of Alex at Goodison but he, too, was unable to break into the senior side. He moved to Southport in 1961 and has now played over 300 games for them.

In addition, he is player-manager, having been appointed when Don McEvoy returned to Barrow.

Two others who came from Everton

The team contains two more ex-Evertonians who were unable to shift the star names at Goodison but who have enjoyed regular League play since leaving. Ambrose Clarke arrived in 1965-66, David Pearson following two years later. Both are now fixtures in the Southport team at full-back.

Keith Pring distinguished himself over several seasons with Newport County, then spent three years with Rotherham. Later he served Notts County for a couple of years before joining Southport last summer.

Had a taste of first division football

Malcolm Russell joined Southport from Halifax last season. He had made almost 200 League appearances for Halifax since his debut in 1962-63.

Bolton gave Eric Redrobe a taste of First Division football but he didn't manage to hold a regular spot in the side. After transferring to Southport in 1966 he has rarely been out of the team.

Tom Cheetham, spotted in local football, was signed as a professional in December and given his chance in the League team a few weeks ago.

Luton's leading newsagents

HOUGHTONS

CONFECTIONERS · TOBACCONISTS
GREETINGS CARD SPECIALISTS

- ★ 16 The Parade, Hill Rise
- ★ 3 Ashwell Parade, Sundon Park
- ★ 82 Putteridge Road, Stopsley
- ★ 253 Birdsfoot Lane
- ★ 150 Sundon Park Road
- ★ Jansel House, Stopsley
- ★ 217 Dunstable Road
- ★ 178 Ashcroft Road, Stopsley
- ★ 8 Hillborough Crescent, Houghton Regis

*Whenever you are near
— pay us a visit
We will be pleased
to serve you*

buy your
POST
with full-time
results outside
the ground
after the match



RICHARDSON and BOTTOMS

LIMITED

*Builders
and
Contractors*

107, BISCOT RD.

Luton

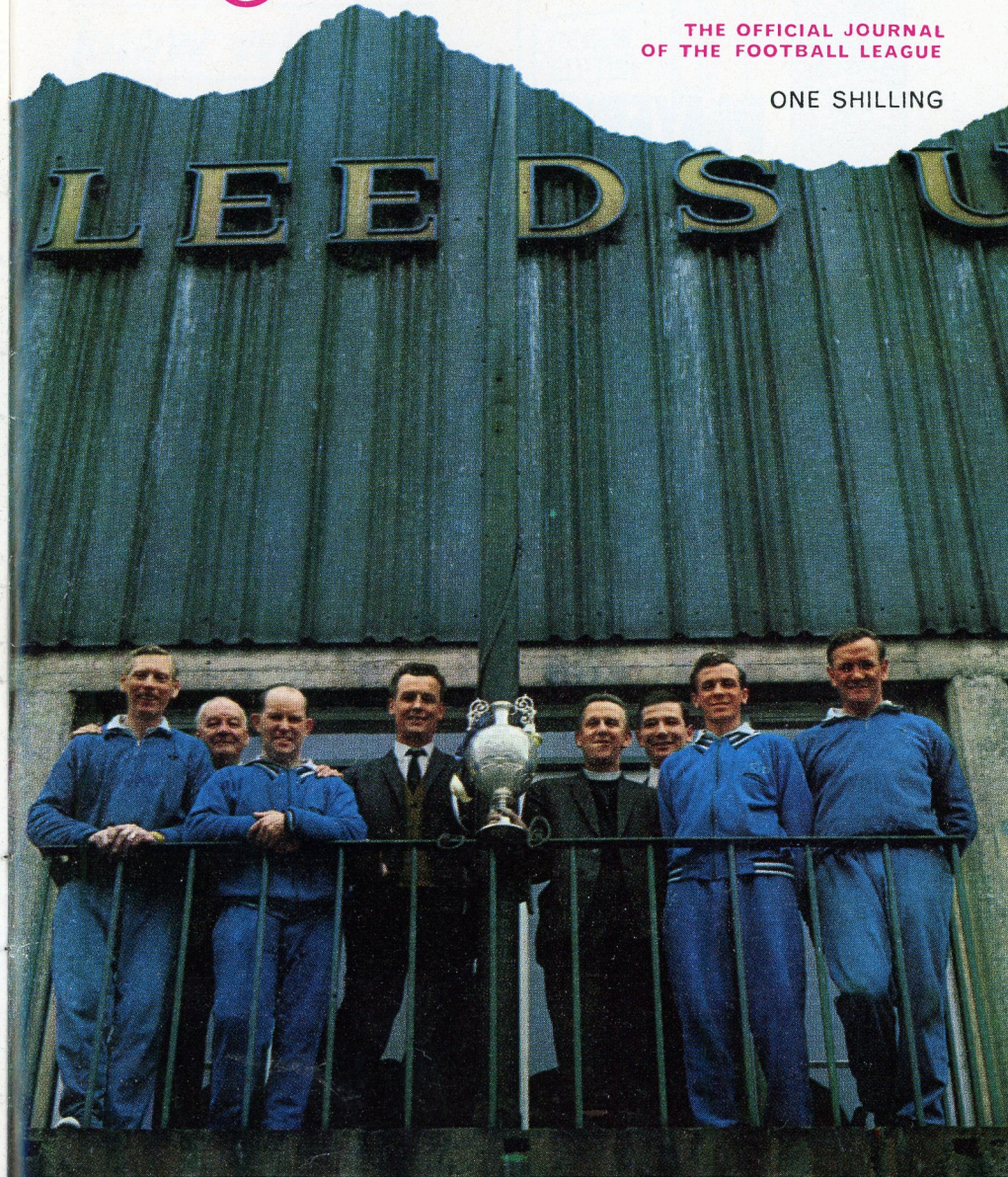
Telephone: 25628

Football League Review



THE OFFICIAL JOURNAL
OF THE FOOTBALL LEAGUE

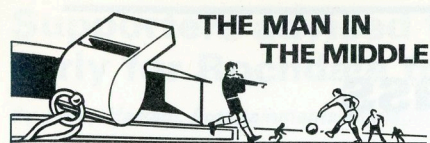
ONE SHILLING



No flannel- All Flavour



Round here
that's what Park Drive
means to us
Park Drive Flavour



PETER WALTERS (Bridgwater)

A recurring ankle injury forced **PETER WALTERS** to give up playing football so he turned to refereeing to keep in touch with the game.

As a player he had always held an interest in officiating and he already had his class III certificate when he retired.

He moved around the Somerset and Cornwall senior leagues until his promotion to the South-western League.

Later he stepped up to the Football Combination and in 1962, was appointed as a Football League linesman. Three years later he was elevated to the League's referees' list.

Has been in big games

Some of the big games he has been concerned with so far include a youth international between Wales and Ireland and an FA Youth Cup semi-final, as referee, and an FA Cup semi-final and European Cup-Winners' Cup quarter final as linesman.

Mr Walters lives in Bridgwater, Somerset, where he is headmaster of a primary school. He is married with two sons and a daughter. His hobbies include gardening and cine photography.



Walsall goalkeeper Phil Parkes throws himself at the feet of Viv Busby to save a dangerous situation. John Moore is up in close support of the Town attack.

Picture: *Luton News and Green 'Un.*

Two in a class of their own



Comfort for all manner of functions – that is the motto of the new, luxurious Hatters' Club which is proving so popular.

The New Sports Centre



Our new Sports Centre at 231 Dunstable Road which offers a comprehensive list of sports goods, toys and games at competitive prices.

Supporters advised to book early for Rochdale train

By Harry Haslam, Entertainments Manager

With the season running towards a thrilling climax, supporters are advised to book early for the chartered train which we are running to Rochdale on Saturday week.

Fare for this is a most reasonable 22s 6d and the train leaves Luton at the convenient time of 9.05 a m, Bedford 20 minutes later and arrives at Rochdale at 1.07 p m.

Return journey begins at 5.47 p m, calling at Bedford, 9.30 p m and arriving in Luton at 10 o'clock.

Heavy demand is expected

On the face of things, there is bound to be a heavy demand for tickets which are available at the Sports Centre, 231 Dunstable Road, Luton.

Next season, of course, we intend to continue and extend, if possible, this service of providing chartered trains for supporters which has been a huge success.

Hoping to visit pastures new

Scarcely any trouble has been encountered and our regular supporters have proved to be among the best behaved in the country. Of course, we hope that there will be pastures new, in the shape of Second Division clubs, to visit next season, and that will be resolved during the next ten days.

Enquiries will be welcomed at the Sports Centre from those interested in joining the new Vice-Presidents' Club. Annual membership fee is £25, which provides a seat in a special section of the stand and membership of a fully licensed club.

Accommodation needed for players

With next season in mind, we need first-class living accommodation for single players. Those in a position to provide it, please contact me.

Early notice of this need is being given because it is often difficult to obtain the class of board and lodging we require once a new season has begun.



BONANZA WINNERS

Drawn at home match against Reading on Easter Saturday.

1st prize: 4508, £10 – unclaimed.

2nd prize: 4121, watch – Mr Barrett, 4 Hyde View Road, Harpenden.

3rd prize: 4893, watch – Mr Oliver, 15 Fieldside Road, Pulloxhill.

4th prize: 3636, watch – Mr Woodhouse, 54 Bramingham Road.

5th prize: 3299, 1 Odeon cinema seat – unclaimed.

6th prize: 4748, 1 Odeon cinema seat – unclaimed.

Draw made at home match against Walsall on Saturday.

1st prize: (£10) 2226.

2nd prize: (watch) 2057.

3rd prize: (watch) 1511.

4th prize: (watch) 0591.

5th prize: (Odeon cinema seats) 1937.

6th prize: (Odeon cinema seats) 0568.

LUTON TOWN FC POOL THIS WEEK'S LUCKY NUMBERS

Saturday: £20-37061; £15-09855; £5-28629; £5-32756; £2-04038; £2-38593; £1-16352.

Monday: £20-22788; £15-35411; £5-10393; £5-25331; £2-24973; £2-20861; £1-31617.

Tuesday: £20-15675; £15-24853; £5-08024; £5-33622; £2-19905; £2-41019; £1-23309.

Wednesday: £20-13482; £15-21174; £5-27793; £5-11109; £2-42436; £2-05387; £1-31804.

Thursday: £20-39558; £15-06091; £5-29742; £5-12457; £2-03362; £2-14138; £1-05921.

Friday: £20-16614; £15-40215; £5-18079; £5-00625; £2-30287; £2-38727; £1-11683.



Coming Matches

LATEST RESULTS

HOW TO GET THERE

WHERE TO PARK AT MANSFIELD

FOOTBALL COMBINATION

WEDNESDAY, 15 APRIL

LUTON TOWN v OXFORD UNITED

KICK-OFF 7.30 p m

Prices of admission

Enclosure 2s 6d (children 1s 6d), Stand seats 6d extra.

BEDFORDSHIRE SENIOR CUP FINAL

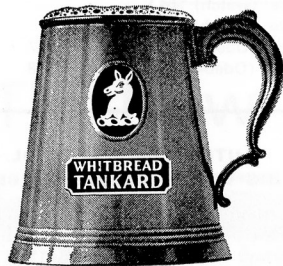
SATURDAY, 18 APRIL

LEIGHTON TOWN v TOTTERNHOE

KICK-OFF 3 p m

Prices of admission

Adults 3s, Children 1s 6d, Seats 1s extra.



WHITBREAD TANKARD
cool,
clear, refreshing

Available in all Bars

DIVISION III

Luton Town 2 Rotherham United 1

Starling; Ryan, Bannister; Slough, Branston, Moore; Busby, Macdonald, Allen, Keen, French (Harrison).

Scorers: Allen, Slough.

Luton Town 5 Reading 0

Starling; Ryan, Bannister; Slough, Branston, Moore; Collins, Busby, Macdonald, Keen, Harrison. Substitute: Tees.

Scorers: Macdonald (3), Busby, Harrison.

Barnsley 2 Luton Town 1

Starling; Ryan, Bannister; Slough, Branston, Moore; Collins, Busby, Macdonald, Keen, Harrison. Substitute: Allen.

Scorer: Keen.

Halifax Town 0 Luton Town 0

Starling; Ryan, Bannister; Slough, Branston, Moore; Collins, Busby, Macdonald, Keen, Harrison (Phillips).

Fulham 0 Luton Town 1

Starling; Ryan, Bannister; Keen, Branston, Moore; Slough, Busby, Macdonald, Allen, French.

Substitute: Collins.
Scorer: Macdonald.

Luton Town 3 Walsall 0

Starling, (Allen); Ryan, Bannister; Slough, Branston, Moore; Collins, Busby, Macdonald, Keen, French.

Scorers: Busby, Collins, Macdonald.

FOOTBALL COMBINATION

Luton Town 3 Bristol City 0

Davie; Dougan, Shanks; Guild, Nicholl, Delgado; Hooper, Thompson, Tees, Wainwright, Hipwell. Substitute: Sorbie.

Luton Town 1 Ipswich Town 1

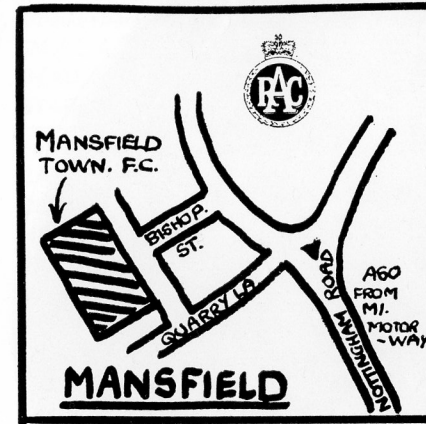
Read; Dougan, Shanks; Delgado, Nicholl, Guild; Hooper (Thompson), Tees, Phillips, Wainwright, Hipwell.

Scorer: Phillips.

BEDFORDSHIRE PROFESSIONAL CUP FINAL

Luton Town 4 Bedford Town 3

Davie; Dougan, Slough; Shanks, Delgado, Guild; Phillips, Allen, Tees, Thompson, (Hipwell), French. Scorers: Phillips (3), Tees.



MANSFIELD TOWN v LUTON TOWN MONDAY, 20 APRIL

LUTON

Leave by A505 as for Dunstable

Join M1 3 miles

Newport Pagnell Services 21 miles

Watford Gap Service Area 45 miles

Leicester Forest Service Area 68 miles

Trowell Services 95 miles

Intersection No. 27 104 miles

Follow signs 'A608 Mansfield'

At 1½ m. on, turn L onto A611

New Annesley 107 miles

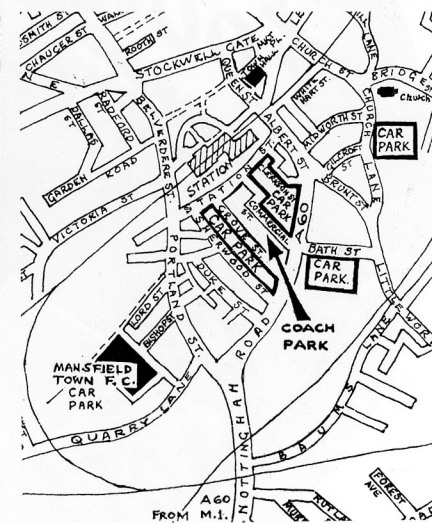
At 4 m. on, turn L onto A60 into:

MANSFIELD 113 miles

(See Plan)



In view of the fact that it is expected that we shall have a strong following to Mansfield, the local police have asked that we should publish this map showing the parking areas adjacent to the Field Mill ground.

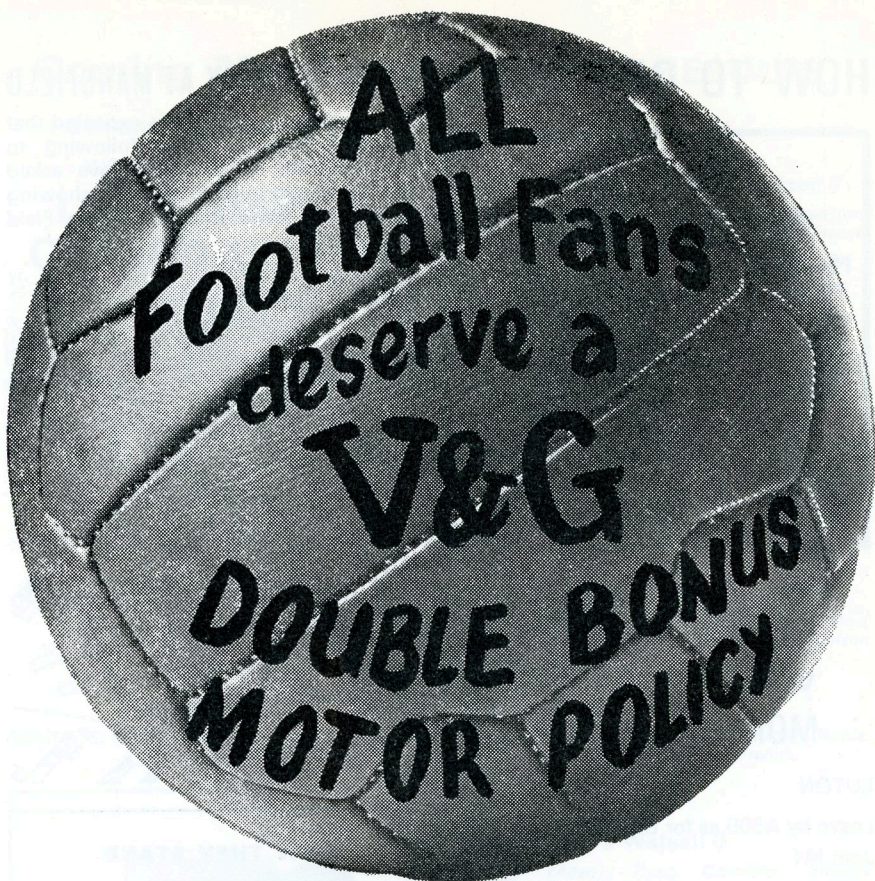


HOW THEY STAND

DIVISION III

	P	W	D	L	F	A	P
Orient	42	22	12	8	61	32	56
Bristol Rovers	44	20	16	8	77	52	56
LUTON TOWN	43	21	13	9	74	42	55
Brighton	45	23	9	13	56	41	55
Barnsley	45	19	14	12	67	58	52
Reading	43	20	11	12	77	71	51
Fulham	42	17	15	10	76	52	49
Mansfield Town	42	19	10	13	67	47	48
Rochdale	43	18	10	15	67	54	46
Bradford City	43	17	12	14	57	47	46
Doncaster Rovers	45	17	11	17	51	53	45
Torquay	45	13	17	15	59	59	43
Halifax Town	43	14	15	14	46	58	43
Rotherham United	45	14	14	17	59	53	42
Shrewsbury Town	42	11	18	13	57	59	40
Plymouth	43	15	10	18	53	59	40
Bury	45	15	10	20	74	79	40
Walsall	42	15	10	17	47	64	40
Tranmere Rovers	41	11	14	16	48	69	36
Bournemouth	43	11	14	18	47	69	36
Southport	41	13	9	19	44	53	35
Gillingham	40	10	10	20	45	61	30
Barrow	46	8	14	24	46	81	30
Stockport County	43	6	10	27	27	69	22

Up to and including Saturday, 10 April



**THE V&G
DOUBLE BONUS
MOTOR INSURANCE POLICY
GIVES FAIRER TERMS
TO EVERY DRIVER**

For further information contact your local officially appointed V & G Insurance Broker, or write or phone the address below.

V&G THE VEHICLE & GENERAL GROUP OF INSURANCE COMPANIES

Group Headquarters,
Administration & Operations:
Bushey House,
High Street, Bushey,
Hertfordshire.
Tel: 01-950 4311.

THE VEHICLE & GENERAL INSURANCE CO. LTD.
LIFE, CASUALTY & GENERAL INSURANCE CO. LTD.
AUTOMOBILE & GENERAL INSURANCE CO. LTD.
THE GENERAL & COMMERCIAL MOTOR INSURANCE CO. LTD.
METROPOLITAN GENERAL INSURANCE CO. LTD.
WORLD AUXILIARY INSURANCE CORPORATION LTD.
PIONEER LIFE ASSURANCE CO. LTD.

	APPEARANCES				GOALS			
	FL	FAC	FLC	FC	FL	FAC	FLC	FC
<i>Goalkeepers</i>								
DAVIE, A.	31	3	2	6	—	—	—	—
READ, A.	6	—	3	15	—	—	—	1
STARLING, A.	6	—	—	15	—	—	—	—
<i>Full Backs</i>								
BANNISTER, J.	38	3	5	1	—	—	—	—
DOUGAN, M.	6	—	3	8	—	—	—	2
HOOPER, G.	—	—	—	19	—	—	—	—
JARDINE, F.	10	1	—	20	—	—	—	—
RYAN, J.	33	3	2	8	2	—	—	—
SHANKS, D.	—	—	—	9	—	—	—	—
LOVERIDGE, D.	—	—	—	7	—	—	—	—
<i>Half Backs</i>								
BRANSTON, T.	16	2	5	17	—	—	1	—
DELGADO, A.	—	—	—	8	—	—	—	—
KEEN, M.	43	3	5	—	3	—	—	—
GUILD, A.	—	—	—	31	—	—	—	4
MOORE, J.	20	—	1	18	—	—	—	—
NICHOLL, C.	28	1	—	7	2	—	—	—
SLOUGH, A.	42	3	5	2	4	—	—	—
THOMPSON, P.	—	—	—	4	—	—	—	1
WAINWRIGHT, R.	—	—	—	28	—	—	—	2
<i>Forwards</i>								
ALLEN, K.	36	3	5	5	7	—	2	1
BUSBY, V.	6	—	—	8	2	—	—	3
COLLINS, J.	38	3	3	3	10	2	—	1
FRENCH, G.	37	3	5	1	4	—	—	—
HARRISON, M.	11	1	—	18	4	—	—	6
LEWIS, B.	6	—	2	8	—	—	2	4
MacDONALD, M.	43	3	5	2	24	1	2	4
PHILLIPS, P.	5	—	—	27	—	—	—	15
SHEFFIELD, L.	6	—	5	6	—	—	2	4
STEVENSON, M.	—	—	—	7	—	—	—	2
TEES, M.	31	3	1	4	11	2	—	—
SPARKES, N.	—	—	—	2	—	—	—	—
TUFFS, R.	—	—	—	1	—	—	—	—
ADAIR, K.	—	—	—	1	—	—	—	—
LEE, R.	—	—	—	3	—	—	—	—
HIPWELL, R.	—	—	—	20	—	—	—	—
FOSSEY, P.	—	—	—	10	—	—	—	1
SORBIE, R.	—	—	—	5	—	—	—	—
OPPONENT	—	—	—	—	1	—	—	1
AMATEURS	—	—	—	4	—	—	—	—

FL - Football League; FAC - FA Cup; FLC - Football League Cup; FC - Football Combination



Viv Busby goes down on his knees to make contact with a centre and goalkeeper, Phil Parkes watches the ball go too high. Incident during the Town's 3-0 win over Walsall. Picture: *Luton News and Green 'Un.*

(Eric Pugh continued from page 4)

would be a decided upsurge in the size of the crowds.

Psychological time for Town to strike

That fact, plus the one that that would be a further step towards regaining a place in the top flight, explains the anxiety of those in charge of the fortunes of the club to make certain of promotion this season.

Next time, it might prove to be a little more difficult, because, until the last week or two, it has been a remarkably open race. Now, is the Town's chance to produce the killer instinct at just the psychological time.

Football Association Diary

The FA Diary containing Football League fixtures for season 1970-71, will be available during the first fortnight in August.

Copies may be obtained from the Football Association, 22 Lancaster Gate, London W2, price 6s.



New 1970 range by Vauxhall
bearings by Skefko

SKF

*The Skefko Ball Bearing Company Limited
 Luton, Bedfordshire*

BALL DONOR: G. McKAY

LUTON TOWN

Colours: Shirts White
Shorts Black

Coach: JIMMY ANDREWS

	1	
	Tony Read	
2		3
John Ryan		Jack Bannister
4	5	6
Alan Slough	Terry Branston	John Moore
7	9	11
John Collins	Malcolm Macdonald	Graham French
	8	10
	Viv Busby	Mike Keen
Sub: Keith Allen		

Referee
P. R. WALTERS
(Bridgewater)



Linesmen
K. BRAY (Uxbridge)
Red Flag
P. D. HUNTER (Bexleyheath)
Yellow Flag

Sub: **Jimmy Aindow**

	10		8
	Tommy Cheetham		Alex Russell
11		9	7
Keith Pring		Eric Redrobe	Tony Field
6		5	4
Malcolm Russell		Eric Harrison	Arthur Peat
	3		2
	Colin Alty		Dave Pearson
		1	
		Bobby Wraith	

Colours: Shirts Old Gold
Shorts Old Gold

Player/Manager: ARTHUR PEAT

SOUTHPORT

Result: LUTON TOWN

SOUTHPORT