



FULHAM FOOTBALL CLUB

SEASON 1971-72

OFFICIAL PROGRAMME 7p

LEAGUE DIVISION TWO

SATURDAY, 22nd JANUARY, 1972

KICK OFF 3.00 p.m.

LUTON TOWN



FULHAM STATISTICS 1971/72

FOOTBALL LEAGUE DIVISION II

1971			F. A.								
Sat. Aug.	7	Manchester U. (F'dly)	Home	2-1	Barrett (2)	14,078					
Sat. "	14	Watford	Home	3-0	Earle (2), Johnston	13,568					
Tues. "	17	Cambridge U. (LC1)	Home	4-0	Earle (3), Halom	8,360					
Sat. "	21	Preston North End	Away	0-2		16,425					
Sat. "	28	Norwich City	Home	0-0		10,668					
Tues. "	31	Q.P.R.	Home	0-3		21,187					
Sat. Sept.	4	Middlesbrough	Away	0-2		20,682					
Tues. "	7	Sheffield United (LC2)	Away	0-3		24,271					
Sat. "	11	Burnley	Home	0-2		10,668					
Sat. "	18	Swindon Town	Away	0-4		13,973					
Sat. "	25	Orient	Home	2-1	Barrett, Earle	9,153					
Tues. "	28	Luton Town	Away	0-2		14,017					
Sat. Oct.	2	Sheffield Wednesday	Away	0-4		14,983					
Sat. "	9	Hull City	Home	1-0	Earle	8,352					
Tues. "	12	Oxford United	Home	1-1	Callaghan	7,530					
Sat. "	16	Watford	Away	2-1	Conway, Own Goal	9,302					
Sat. "	23	Portsmouth	Away	3-6	Conway 2 (1 pen.), Barrett	14,171					
Sat. "	30	Blackpool	Home	2-1	Conway, Lloyd	11,020					
Sat. Nov.	6	Bristol City	Away	2-1	Cross, Barrett	17,265					
Sat. "	13	Cardiff City	Home	4-3	Conway 2, Earle, Cross	10,700					
Sat. "	20	Charlton Athletic (1)	Home	1-0	Barrett	13,359					
Sat. "	27	Birmingham City	Away	1-3	Conway	25,671					
Sat. Dec.	4	Carlisle United	Home	0-1		8,101					
Sat. "	11	Sunderland (2)	Away	1-2	Barrett	11,808					
Sat. "	18	Middlesbrough	Home	2-2	Cross, Barrett	7,571					
Mon. "	27	Millwall	Away	1-4	Lloyd	21,391					
Sat. Jan.	1	Swindon Town	Home	2-4	Earle (2)	7,406					
Sat. "	8	Norwich City	Away	1-2	Earle	21,878					
Sat. "	15	Q.P.R. (3)	Away	1-1	Conway	23,707					
Tues. "	18	Q.P.R. (3) replay	Home	2-1	Cross (2)	24,181					
Sat. "	22	Luton Town	Home								
Sat. "	29	Oxford United	Away								
FOOTBALL LEAGUE, DIVISION II (Up to and including January 8th, 1972)											
				P	W	D	L	F	A	Pts.	
Sat. Feb.	5	Huddersfield (4)	Away								
Sat. "	12	Portsmouth	Home	Norwich City	25	15	8	2	39	19	38
Sat. "	19	Blackpool	Away	Millwall	25	11	11	3	42	31	33
Sat. "	26	Bristol City (5)	Home	Q.P.R.	25	12	8	5	37	19	32
Sat. Mar.	4	Cardiff City (LCF)	Away	Sunderland	25	9	11	5	37	38	29
Sat. "	11	Hull City	Away	Birmingham	25	8	12	5	36	25	28
Sat. "	18	Preston N.E. (6)	Home	Carlisle	25	12	4	9	37	30	28
Sat. "	25	Burnley	Away	Middlesbrough	25	12	4	9	33	33	28
Tues. "	28	Sheffield Wednesday	Home	Burnley	25	11	5	9	43	33	27
Sat. Apr.	1	Millwall	Home	Preston	25	10	6	9	35	29	26
Mon. "	3	Orient	Away	Luton	25	7	12	6	29	28	26
Sat. "	8	Charlton Athletic	Away	Bristol City	25	9	6	10	35	32	24
Sat. "	15	Birmingham City (SF)	Home	Sheffield Wed.	25	8	8	9	32	32	24
Sat. "	22	Carlisle United	Away	Swindon	25	8	8	9	22	24	24
Tues. "	25	Q.P.R.	Away	Charlton	25	10	4	11	38	43	24
Sat. "	29	Sunderland	Home	Blackpool	25	9	5	11	35	29	23
				Oxford Utd.	24	7	9	8	24	25	23
				Portsmouth	25	7	8	10	39	42	22
				Orient	25	8	5	12	33	43	21
				Fulham	25	8	3	14	29	51	19
				Cardiff City	24	6	6	12	32	42	18
				Hull	25	6	6	13	24	35	18
				Watford	25	4	5	16	23	46	13

© Football League Ltd. 1971/72

FULHAM FOOTBALL CLUB LIMITED

VOICE OF FULHAM

Registered Office:

Craven Cottage,
Stevenage Road,
London, S.W.6.

*

Directors:

T. TRINDER (Chairman)
N. A. D'AMATO (Vice-Chairman)

R. A. DEAN
C. B. DEAN
E. M. MILLER, J.P.
E. G. LIBBY, B.A.

*

General Manager/ Secretary:

G. I. S. HORTOP

*

Team Manager:

BILL DODGIN

*

Medical Officers:

Dr. W. R. D. WIGGINS,
M.R.C.S., D.A., R.C.P.
and S. (England)
Dr. I. W. F. HANHAM,
M.B., M.R.C.P., F.F.R.

*

Telephone:

01-736 5621/7035

*

Telegrams:

"FULHAMISH",
LONDON, S.W.6.

*

Honours:

Football League:
Division II champions
1948 - 49, runners - up
1958-59; Division III(S)
champions 1931 - 32;
Division III runners-up
1970-71.

F.A. Cup semi-finalists
1908, 1936, 1958, 1962.

ONE OF the pleasures of a big occasion game like the replay with Queens Park Rangers is to bring together old pals. *Johnny Haynes and Alan Mullery shown on our front cover are pictured in the Craven Cottage forecourt.* The smiles are for another friend who has just appeared.

Bobby Robson who jostled shoulders with them often enough on the field was there too—in his capacity as Ipswich manager.

The guest seats and rooms were packed with top officials and it was grand to be able to give them something pleasant to talk about.

Mullery, lately, has spent more time watching than playing for Spurs and England because of a mysterious stomach muscle injury.

His Fulham loyalties have never prevented him pulling verbal punches when he feels criticism can help, but he had nothing but praise for our performance.

'Terrific,' he said. **'It could be Rangers will go up this season but Fulham are the team with real First Division potential.'**

'It's no good going up until you put things right and on this form it should not be long before Fulham have everything just so.'

Dave Mackay, who played against us only a couple of weeks ago, was there again and said: 'I have told everyone Fulham have First Division forwards.'

It was meant in praise but it is an over-simplification which fails to give credit to the rest of the team.

Our forwards work themselves brilliantly into so many scoring positions yet their inability to take a normal percentage of those chances puts a lot of pressure on our players at the other end of the field.

We succeeded in making Queens Park Rangers look an ordinary side which clearly, from their league position, they are not.

In the elation of victory we must not lose our objectivity. That replay was an exciting match only because we allowed it to become one.

Even allowing for the inspired goalkeeping of Phil Parkes, the game might well have been sewn up long before Roger Cross drove in that superb winner.

The lesson is that Roger reckons he is strictly a left-footed player—but he cracked that goal with his right. Maybe he is not the only one underestimating his marksmanship.

It's like old times . . .

WELCOME LUTON

especially John Ryan, Don Shanks, Vic Halom

Tony Read (Goalkeeper). Despite the fact that he has been displaced on occasions, Read has always managed to bounce back as first choice for the position, and is nearing the landmark of 200 League appearance for Luton. Born in Haydock, Sheffield Wednesday gave him his first chance and he moved on to Peterborough United. There, an embarrassment of goalkeepers, caused him to play in the forward line for the Reserves and he has had League experience as a striker for Luton.

Keith Barber (Goalkeeper). Came late into the game as a professional, being in his early 20s, but looks an extremely good prospect, having already made a successful League debut. Comes from Vauxhall (London) and played for Dunstable Town in the Southern League before Luton signed him on a permanent basis.

John Ryan (right-back). Free transfer signing from Fulham after having made 21 appearances in their team. In the two seasons he has been with Luton, he has made 78 out of 88 League appearances and has developed into one of the fastest, most dependable full-backs in the Second Division. A Londoner, he had a spell with Arsenal before going to Craven Cottage.

Alan Slough (left-back). At 23-years-of-age, Slough has a wealth of experience, all of it gained with his home town club, Luton. Most adaptable, he began his career as a full-back, had a spell in the attack and then it seemed that he had found his best place as a driving force in midfield. However, it was then decided that he would serve the Club better in the back four. When First Division clubs were showing an interest in him, he asked for a long-term contract, and signed one for three years with the option of a further three.

Ken Goodeve (left-back). Was signed from Manchester United as a centre-half and showed much promise there in the Reserves. However, towards the end of last season, a first-team vacancy occurred at left-back where he did so well that this is likely to be his future position. Was born in Manchester and signed for United as a youngster.

Don Shanks (left-back). Served his apprenticeship with Fulham who did not offer him terms as a full-time professional, so Luton snapped him up. Since then he has developed quickly having been a regular member of

England's youth team squad and he did not miss a match during their triumph when they won the Little World Cup in Czechoslovakia during the summer. He is now regarded as being ripe for a League bleeding.

Mike Keen (wing-half). One of the most consistent players in the game, something that was recognised last Easter when the Club presented him with a silver salver to mark his 500th League appearance. Most of these were made for Q.P.R. whom he captained during their meteoric rise to Division I and in their League Cup triumph. Luton paid Rangers £18,000 for him, made him their captain and he has been a tower of strength to them. Toured Australia with the F.A. party last summer and was appointed captain.



Vic Halom — well-known here as a striker from the same Derbyshire town, Swadlincote, as British heavyweight champion Jack Bodell — and with the same aggressive attitude. Uses this quality to disturb defences so tends to make more goals than he scores.

Gordon Hindson (left winger). Signed from Newcastle in October and has made a big impact. Has the skill to beat a man and a powerful shot. The fact that he has scored only once since he joined Luton suggests he is due for more.

David Court (wing-half). A record fee for Luton of £35,000 changed hands when this clever midfield player moved from Arsenal just over 18 months ago. For a long time was a member of the first team squad at Highbury where he made over 150 first team appearances and it came as something of a surprise when the 'Gunners' agreed to let him go. In fact the deal went through only after protracted negotiations.

Chris Nicholl (centre-half). Most of the football world was taken by surprise when Luton paid Halifax Town £30,000 for his transfer only a day after he had put up a storming display against them. Has developed into one of the most commanding centre-halves in the Second Division and is now rated in the £100,000 class. Born at Macclesfield, he had trials with Burnley who did not keep him, and Halifax signed him from Witton Albion for a mere £750.

Robin Wainwright (forward). Has been on the books as a full-time professional for some time, but is still only 20 and he joined the Club straight from school. Has the potential for a brilliant midfield player but has yet to make his League debut for Luton. However, he did so late last season with Cambridge United to whom he was loaned for a spell.

Peter Anderson (outside-right). Made his debut whilst still an amateur, against Watford last season and was signed as a professional the following week. Previously he had been one of Hendon's most prominent stars and the move into the higher circle did not worry him because he maintained his place for most of the rest of the season. So far, the majority of his outings have been on the left wing but the indications are that he is happier on the right.

Don Givens (striker). An ex-Manchester United player he came as a centre-forward but spent most of last season in the number 11 shirt, though operating as a striker. With eleven goals he was second leading scorer and it is reasonable to assume that he will boost this total this season. Dublin-born, he has been a regular member of the Eire team during the last two seasons.

John Moore (wing-half). Longest-serving member of the playing staff and one of the Club's most dependable players. Luton's Scottish scout had noted his progress when he was playing for Motherwell who gave him a free transfer after which Luton could not sign him quickly enough. Has made over 200 appearances in League football and has developed a fine understanding with Nicholl.

COTTAGERS CLUB COLUMN

Talk about confidence—this is written before the Queens Park Rangers replay and the first item is—

ARRANGEMENTS FOR THE FOURTH ROUND TIE AT HUDDERSFIELD ON FEBRUARY 5th.

By coach the fare is £1.80 and leaves at 8 a.m. By train the fare is £2 and the departure time will be announced later. For both coach and train no booking will be accepted after Monday, January 31st.

NEXT SATURDAY we go to Oxford. The fare by coach is 70p and we leave at noon.

If we can get the sort of vocal support our fans gave the team last Saturday at Shepherds Bush in our home games the team will surely respond and start climbing the league table. Thank you all those who went to the Rangers and gave the team all the encouragement they needed. Keep up the good work today.

DIARIES

Some of our members have not yet collected their copy from the kiosk. Please do so today.

CLUB NIGHTS

Why not come down to the ground on Monday evenings to our Club Night. They are well supported, so come along and make some new friends.

CLUB OUTING

The trip to the Old Tyme Night at the Lyceum with a two course meal and drink provided will be on Sunday, 13th February. The cost is £1.85, so those wishing to go along for a good night out please give their names to any committee member at the kiosk or at the Club on Monday evening.

FOOTBALL TEAM

We are hoping to have another friendly match tomorrow week and if there are any players over 17 interested please contact the committee. As you all know in our friendly last week against OPCISS F.C. we lost 6—2.

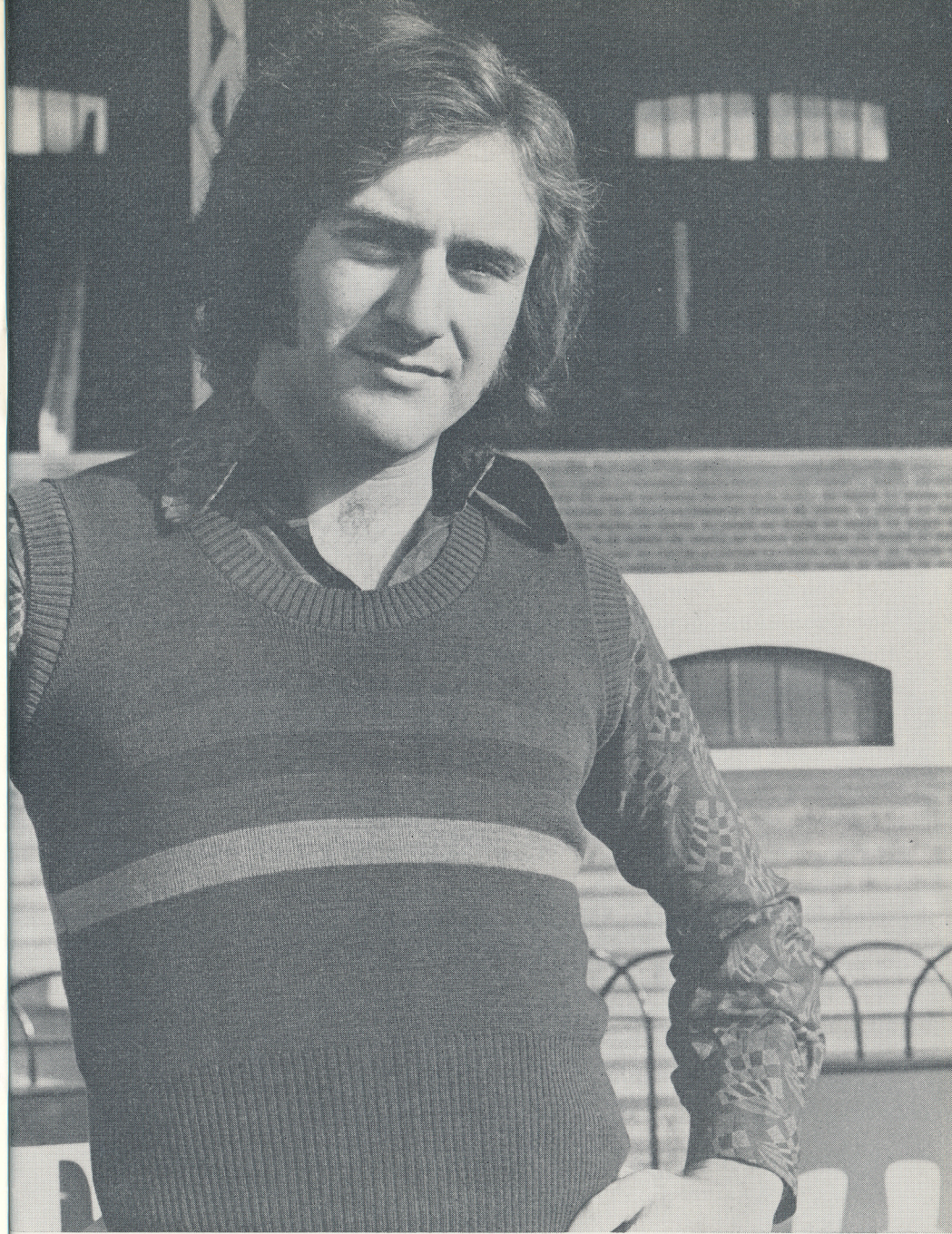


LUTON TOWN F.C. 1971-72

Back row (left to right): Peter Woods, Viv Busby (on loan to Newcastle), Alan Garner, David Court, Don Shanks.
 Middle row (left to right): Ken Whitfield (Coach), Don Givens, Chris Nicholl, Tony Read, Robin Wainwright, Peter Anderson,
 Jimmy Andrews (Assistant Manager).

Front row (left to right): Ken Goodeve, Roger Hoy (now with Cardiff), John Moore, John Ryan, Alan Slough, Jimmy Ryan.

Photo by courtesy The Luton News.



Roger Cross

ROGER CROSS

Name: **Roger Cross.**

Date of birth: **20.10.48.**

Height: **6ft.** Weight: **12½st.**

Married.

Brief playing history: **Joined West Ham from school, played for Orient for two months on loan, then transferred to Brentford.**

What car do you drive: **Triumph Vitesse.**

Favourite player (excl. Fulham): **Martin Chivers.**

Favourite team (excl. Fulham): **Brentford, West Ham.**

Favourite type of:

Film: **Comedy mixed with drama.**

T.V. programme: **Budgie.**

Film star: **Marlon Brando, Natalie Wood.**

Any superstitions: **None.**

Ambitions: **To play in the First Division and to be very successful.**

Hobbies: **Collecting antique copper and brass for the home.**

Favourite meal after a game: **Steak.**

Most embarrassing moment: **Getting the ball on my right foot.**

Most thrilling moment: **Scoring for West Ham on my home debut v Arsenal.**

Biggest disappointment: **Waiting so long for my first Fulham goal.**

Who would you most like to meet in football: **Sir Matt Busby.**

Who would you most like to meet outside football: **Diana Ross.**

What would you like to have been if you had not been a footballer: **Professional golfer.**

Who is your number one fan: **My father and father-in-law.**



FULHAM FOOTBALL CLUB SEASON 1971-72

a picture parade **EXTRA**



HERE'S Jimmy Conway's goal in our first match against Q.P.R.—an extra special goal worthy of an extra page all to itself. Jimmy must have been 30 yards out when he hit a really powerful shot which dipped just below the bar leaving Phil Parkes helpless. It was a fair warning to Rangers.



Ken Coton's picture parade

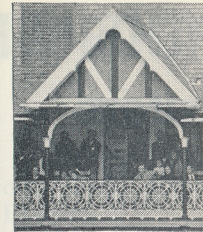
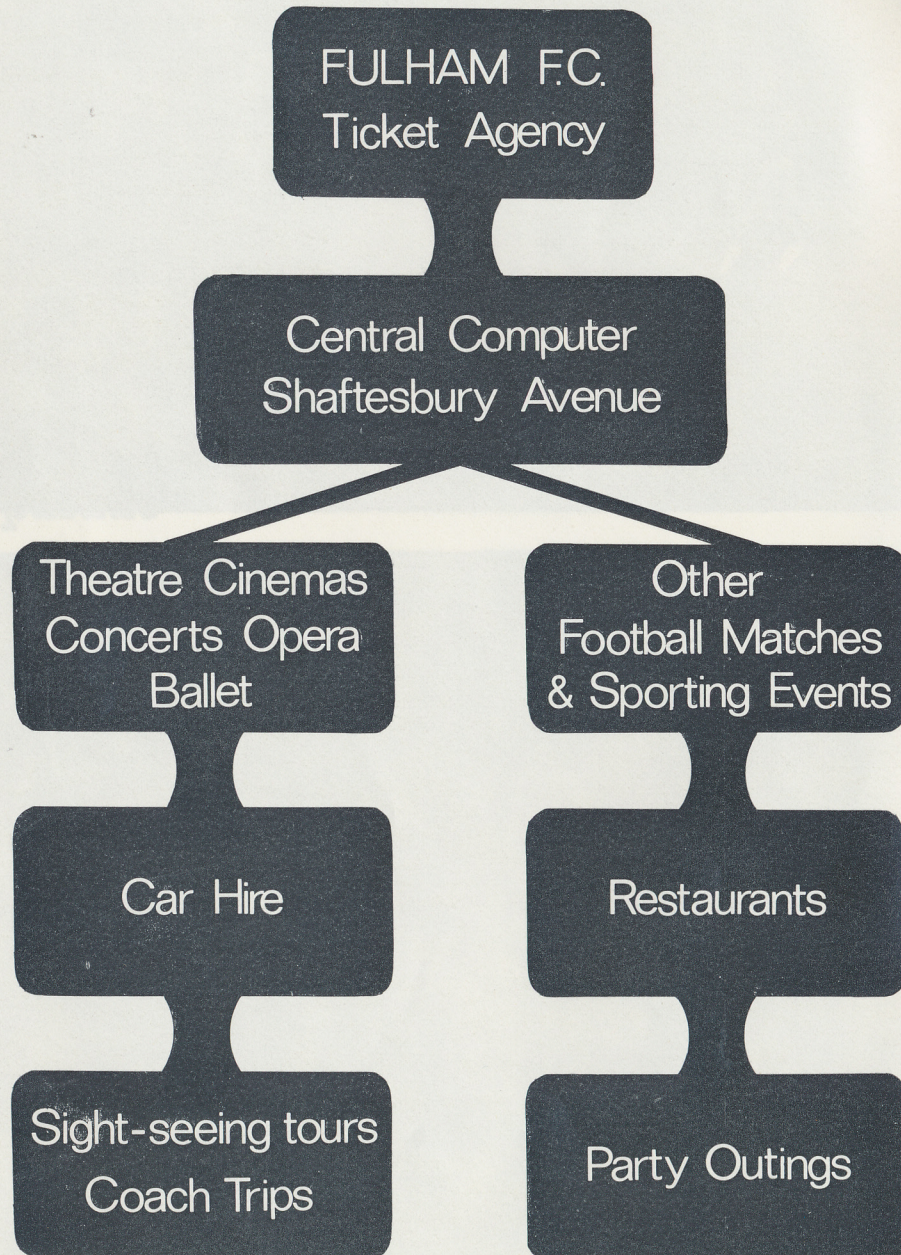
AND so to the replay—and, well, you can't keep Roger Cross out of pictures. For the first goal, he picked up a pass midfield, held off a number of challenges, sent opponents the wrong way (photo right) and then passed to Les Barrett on the wing. When the low centre came across, Roger was roaring in to smash the ball home. In the picture above, Roger's just on the edge of the goal area.

Our winning goal (below) came in the second half. Barry Lloyd touched the ball sideways and there was Roger, 22 yards out, taking his time and then slamming the ball past Parkes. It was a fair warning to Huddersfield.



We are a ticket agency NOW!

See our Assistant Secretary Nigel Williams
about the services detailed below



Inside the Cottage

'Meanwhile since I have to be in hospital it could hardly be a better one. I have a T.V. and radio in my room and everything I need.

'It gives me a chance to catch up with my reading. Somebody sent me Michael Parkinson's "Football Daft". It's good.'

* * *

Talk about Cup coincidences

We took an all-white strip to Queens Park Rangers ground and were caught out when the referee decided it clashed with their colours.

It was too late then to collect our alternative gear so we played in jerseys borrowed from them.

The last time something like that happened was three years ago—in the same round of the same competition—at Sunderland.

We played that midwinter match in a summer strip—with 'V' necks and short sleeves. And that was a triumph, too. We won 4—1 though they were then in the First Division.

* * *

Encouraging news of another casualty—Ian Seymour.

He is now having special exercises at the remedial centre which gave such great help to others of our players like Johnny Haynes and Jimmy Conway.

It's silly to take chances after a broken leg and Ian will not be encouraged to rush things. However the indications now are that he will be able to get in a game or two before the end of the season.

At the time of going to press we were hoping to have tickets available today for the F.A. Cup-tie at Huddersfield.

Listen to announcements over the public address system.

While we were whooping it up on Tuesday night Mike Pentecost was in hospital recovering from a cartilage operation and 'Missing it all terribly, especially on a night like that.'

He said: 'It's my right knee and maybe if I had not broken my right ankle a couple of years ago it would not have happened.'

'It was in the Combination match with Leicester at the Cottage on December 5th. My ankle got stuck in a tackle but all those exercises I did on it made it so strong that it took the strain without any bother. The trouble is my knee twisted instead.'

'This was in the first half and I really dislike going off though I now realise it would have been better if I had done.'

'To make things worse I spent five weeks believing it was the knee ligaments that had gone.'

'Then things began to point to it being the cartilage and the operation showed it was split in two.'

'I got out of bed for the first time today. (Editor's note—last Tuesday). I thought I would be fine but I felt dizzy as soon as I stood up.'

'It's going to be hard to be patient but even laying in bed I can do tension exercises to prevent my thigh muscles from wasting.'

'I don't want to become an expert on crutches again. I had enough of that after the ankle.'

FROM THE RECORDS OF THE BRITISH PROGRAMME COLLECTORS CLUB

Facts and Figures on our Visitors

LUTON TOWN

Our visitors today, Luton, joined the Football League Division II, way back in 1897-98 but after just three seasons dropped out of the League.

They re-entered in 1920-21, being one of the original members of Division III South and prior to this season's meetings, we have met Luton on 28 occasions in League football and a summary of those results is as follows:—

	W	D	L	F	A	Pts.
Home	11	2	1	37	16	24
Away	5	0	9	17	31	10
Total	16	2	10	54	47	34

★Luton's only win here in 14 visits was by the score of 1—0 (1969-70).

★Our biggest home win against Luton came in 1953-54 when we won 5—1.

★In three matches at home, we have scored 1, 1 and 0 goals against Luton. These were drawn or lost. In all other meetings we scored between 2 and 5 goals on each occasion to earn full points.

TABLE OF MERIT

In the League "Table of Merit" based on points obtained from games played, Luton are in **25th** position with the following record:—

Played	Won	Drew	Lost	For	Agst	Pts
1974	789	465	720	3294	3025	2043

WHO HOLDS THE RECORD No. 14 — LUTON

The table below shows the best and worst figures for a season since joining the League:—

	M O S T			L E A S T		
	Home	Away	Total	Home	Away	Total
Games won	20	9	27	5	*0	5
Games Drawn	10	9	18	1	1	3
Games Lost	10	18	24	*0	6	7
Goals For	69	38	103	25	10	40
Goals Against	41	64	95	9	24	35
Points	*43	25	66	13	5	18

The figures marked * are Football League records held by Luton.

Luton's record of obtaining 43 home points in a season was established in season 1968-69.

The remaining records are shared with several clubs.

In establishing the record of 43 points at home in a season, Luton won 20 games and drew three.

RECORD BREAKERS

Manchester United did not get a single point from their first 12 games in Division I (1930—31) and below are the details:—

Aston Villa (H) 3—4; Middlesbrough (A) 1—3; Chelsea (A) 2—6; Huddersfield (H) 0—6; Newcastle (H) 4—7; Huddersfield (A) 0—3; Sheffield Wednesday (A) 0—3; Grimsby (H) 0—2; Manchester City (A) 1—4; West Ham (A) 1—5; Arsenal (H) 1—2; Portsmouth (A) 1—4.

Their complete record for the season read:—

Played	Won	Drew	Lost	For	Agst	Pts
42	7	8	27	53	115	22

ITEMS OF INTEREST

Of the 12 original members of the League, on its formation in 1888, only Derby, Everton, Stoke, Wolves and West Bromwich Albion are today in Division I.

The remainder are as follows:—

Accrington Stanley (no longer League members); Burnley — Division II; Aston Villa, Bolton, Blackburn, Notts County, all in Division III.

There are more clubs of the original 12 in Division III that at any other time.

Of the 12 original members of Division II (1892), four no longer have League status. They are Bootle, Burton Swifts, Darwen and Northwich Victoria.

Burton Swifts, the one-time Second Division club, became Burton Utd. for season 1901-02.

On January 30th, 1937, there was not an away win in all the F.A. Cup and League games played.

Huddersfield Town were unbeaten away from home, from November 15th, 1924 to November 14th, 1925. During this period they played 18 games, winning 12, six being drawn.

Cardiff City completed season 1928-29 with the best defensive record in Division I. They conceded only 59 goals, yet were relegated.

Charlie Athersmith, the famous Aston Villa forward of the 1890s, used an umbrella on the field during a downpour in the Villa v Sheffield United match on the old Perry Barr ground. In 1896-7 he won a Cup medal, a League Championship medal, and three International caps.

GOALSCORING OVER THE YEARS

Goalscoring in Division One has dropped in recent years, as in other divisions, and below is a chart showing how it reached a peak.

1888-89 — 585	1919-20 — 1332
1889-90 — 611	1925-26 — 1703
1891-92 — 777	1927-28 — 1765
1892-93 — 936	1930-31 — 1823*
1893-94 — 938	
1903-04 — 939	
1905-06 — 1242	

This final figure has not been improved on for over 40 years.

A similar survey of goals in Division II shows a similar pattern.

1892-93 — 591	1919-20 — 1285
1893-94 — 894	1925-26 — 1487
1894-95 — 1023	1926-27 — 1668*
1898-99 — 1103	
1905-06 — 1116	
1906-07 — 1155	
1907-08 — 1187	

Division III South reached its peak in goalscoring in season 1957-58 with **1,783*** goals, Division III North in 1956-57 with **1,841***.

Both Divisions III and IV reached their peak in the early 1960s, Division III in 1962-63 with **1,855*** goals; Division IV in 1964-65 with **1,820*** goals.

*Records for each Division of the Football League.

FULHAM STATISTICS 1971/72

FOOTBALL COMBINATION

Sat. Aug. 14	Tottenham Hotspur	A	0-3
Wed. " 18	Oxford United	H	1-1
Sat. " 21	Norwich City	H	2-0
Wed. " 25	Cardiff City	A	0-1
Sat. " 28	Bristol Rovers	A	1-1
Sat. Sept. 4	Swansea City	H	1-2
Sat. " 11	Swindon Town	A	2-2
Wed. " 15	Q.P.R.	H	2-2
Sat. " 18	Reading	H	2-1
Tues. " 21	Southampton	A	1-1
Sat. " 25	Plymouth Argyle	A	1-4
Mon. " 27	Enfield (LC 1)	H	1-2
Sat. Oct. 2	Tottenham Hotspur	H	0-4
Sat. " 9	Norwich City	A	0-1
Sat. " 16	Southampton	H	2-0
Wed. " 20	Oxford United	A	0-3
Sat. " 23	West Ham United	H	0-0
Sat. " 30	Bournemouth	A	1-0
Mon. Nov. 1	Chelsea	H	2-0
Sat. " 6	Bristol City	H	0-2
Sat. " 13	Ipswich Town	A	1-3
Tues. " 23	Q.P.R.	A	1-1
Sat. " 27	Birmingham City	H	2-0
Mon. Dec. 6	Leicester City	H	2-0
Sat. " 18	Chelsea	A	1-0
Sat. Jan. 1	Swansea City	A	0-2
Sat. " 8	Bristol Rovers	H	5-0
Sat. " 29	Cardiff City	Home	
Sat. Feb. 5	Arsenal	Away	
Sat. " 12	West Ham United	Away	
Sat. " 19	Bournemouth	Home	
Sat. " 26	Bristol City	Away	
Wed. Mar. 1	Ipswich Town	Home	
Sat. " 11	Swindon Town	Home	
Wed. " 22	Reading	Away	
Sat. " 25	Plymouth Argyle	Home	
Thurs. " 29	Leicester City	Away	
Sat. Apr. 8	Crystal Palace	Home	
Sat. " 15	Birmingham City	Away	
Wed. " 19	Crystal Palace	Away	
Sat. " 22	Arsenal	Home	

FOOTBALL COMBINATION

(Up to and including 18th January, 1972)

	P	W	D	L	F	A	Pts.
Tottenham Hotspur	23	17	5	1	52	9	39
Ipswich Town	25	13	9	3	55	24	35
Oxford United	24	13	7	4	34	21	33
Q.P.R.	26	11	8	7	52	29	30
Crystal Palace	24	12	4	8	40	35	28
Swindon Town	25	10	6	9	48	48	26
Swansea City	24	9	8	7	30	36	26
Bristol City	24	10	5	9	41	31	25
Arsenal	25	11	3	11	41	33	25
Fulham	26	9	7	10	30	35	25
West Ham United	23	10	4	9	42	35	24
Leicester City	23	9	6	8	39	36	24
Birmingham City	23	9	5	9	24	33	23
Southampton	22	8	5	9	24	27	21
Cardiff City	25	8	4	13	37	37	20
Bournemouth	26	7	6	13	31	45	20
Chelsea	24	6	6	12	24	35	18
Bristol Rovers	24	6	6	12	26	40	18
Plymouth Argyle	26	7	3	16	31	61	17
Reading	24	6	4	14	22	53	16
Norwich City	22	6	3	13	21	41	15

F.A. CUP—Third Round

Saturday, 15th January, Queens Park Rangers (a), drew 1-1 (half-time 1-0).

Team: Webster; Moreline, Callaghan, Dunne, Matthewson, Richardson; Conway, Cross (Johnston), Earle, Lloyd, Barrett. Substitute: Johnston. Scorer: Conway.

Referee: R. Matthewson, (Manchester).

F.A. CUP—Third Round Replay

Tuesday, 18th January, Queens Park Rangers (h), won 2-1 (half-time 1-0).

Team: Webster; Moreline, Callaghan, Dunne, Matthewson, Richardson; Conway, Cross, Earle, Lloyd, Barrett. Substitute: Johnston. Scorer: Cross 2.

Referee: R. Matthewson (Manchester).

SOUTH EAST COUNTIES, DIVISION 1

Sat. Aug. 14	Ipswich	H	2-2
Sat. " 21	Millwall	H	1-4
Sat. " 28	Luton Town	H	2-0
Sat. Sept. 4	West Ham United	A	0-2
Sat. " 11	Crystal Palace (LC1)	H	3-2
Sat. " 18	Millwall	A	0-0
Mon. " 20	Charlton Ath. (SJC 1)	A	2-2
Sat. " 25	Reading	A	2-0
Sat. Oct. 2	Crystal Palace	A	1-3
Wed. " 6	Charlton Ath. (SJC 1 Rep.)	A	1-0
Sat. " 9	Charlton Athletic	A	1-2
Sat. " 16	Gillingham (LC 2)	H	2-2
Mon. " 18	Charlton Ath. (LJC 1)	H	2-2
Sat. " 23	Crystal Palace	H	1-4
Sat. " 30	Orient	A	2-0
Sat. Nov. 6	Gillingham (LC 2 Rpy)	A	1-0
Sat. " 13	Brentford	A	1-0
Mon. " 15	Millwall (SJFC 1)	H	1-2
Sat. " 20	Orient	H	0-0
Mon. " 22	Charlton Ath. (LJC 1 Rpy)	A	1-2
Sat. " 27	Watford	H	2-2
Mon. " 29	Crystal Palace (FAYC 2)	H	1-2
Sat. Dec. 4	Charlton Athletic	H	2-2
Sat. " 11	Ipswich Town	A	0-2
Sat. " 13	Millwall (LCSF)	H	2-0
Mon. " 18	Arsenal	A	1-0
Sat. Jan. 1	Tottenham Hotspur	H	0-2
Sat. " 8	Brentford	H	1-1
Sat. " 15	Chelsea	A	1-0
Sat. " 22	Gillingham	Home	
Sat. Feb. 5	Reading	Home	
Sat. " 12	Tottenham Hotspur	Away	
Sat. " 19	Arsenal	Home	
Sat. " 26	Luton Town	Away	
Sat. Mar. 4			
Sat. " 11	Watford	Away	
Sat. " 18	Q.P.R.	Home	
Sat. " 25	Gillingham	Away	
Sat. Apr. 1			
Sat. " 8			
Sat. " 15	Q.P.R.	Away	
Sat. " 22			
Sat. " 29			

To be arranged v. Chelsea Home
v. West Ham United Home
Home matches played at Richardson & Evans
ground, Kingston-by-pass.
All matches kick-off at 11 a.m.

SOUTH EASTERN COUNTIES

(Up to and including 15th January, 1972)

	P	W	D	L	F	A	Pts.
Tottenham Hotspur	19	15	2	2	49	17	32
Arsenal	19	11	6	2	34	10	28
Millwall	20	11	6	3	49	19	28
Chelsea	19	10	6	3	41	18	26
West Ham United	20	11	4	5	47	28	26
Crystal Palace	20	9	4	7	43	31	22
Luton Town	20	9	3	8	34	34	21
Ipswich Town	20	7	5	8	23	19	19
Q.P.R.	20	6	7	7	20	22	19
Fulham	19	5	7	7	20	27	17
Charlton Athletic	18	7	2	9	26	32	16
Gillingham	16	6	2	8	15	28	14
Orient	20	3	5	12	20	48	11
Watford	17	2	5	10	19	47	9
Brentford	20	3	3	14	18	45	9
Reading	17	3	1	13	13	46	7

SOUTH EAST COUNTIES

Saturday, 15th January, Chelsea (a), won 1-0 (half-time 0-0).

Team: Johnson; Chapman, Berner; Black, Rains, Shrubbs; Lee, Graham, O'Callaghan, Savva, Gill (Seward). Substitute: Seward.

Scorer: Chapman.

SCOREBOARD

RED	A Arsenal	B C. Palace	C Everton
	D Huddersfield	E Man. City	F W.B.A.
	Leeds	Man. Utd.	Newcastle
	Sheff. Utd.	Chelsea	Tottenham
AMBER	A Notts. F.	B Stoke	C West Ham
	D Leicester	E Southampton	F Derby
	Wolves	Blackpool	Charlton
	Liverpool	Bristol C.	Carlisle
GREEN	A Middlesbro'	B Norwich	C Orient
	D Sunderland	E Preston	F Burnley
	Portsmouth	Q.P.R.	Sheff. W.
	Cardiff	Oxford	Millwall
WHITE	A Swindon	B Watford	C Aston Villa
	D Hull	E Birmingham	F Barnsley
	Bournemouth	Bristol R.	Swansea
	Brighton	Rotherham	
PINK	A Coventry	B Newport	C Reading
	D Ipswich	E Southend	F Barrow
	Southport	Workington	Halifax
	Aldershot	Gillingham	Bolton

FOOTBALL LEAGUE

Appearances and Goalscorers

Appearances: Maximum—25

25 — Callaghan, Webster, Earle, Lloyd, Barrett; 22 — Matthewson; 19 — Cross; 18 — Brown, Conway, Dunne; 10 — Stephenson; 9 — Richardson, Pentecost, Fraser; 6 — Johnston; 4 — Carlton; 3 — Halom, Moreline; 1 — Conway (John), Horne.

Substitutes used to date: 3 — Horne; 2 — Moreline, Johnston; 1 — Matthewson, Brown, Carlton.

Goalscorers: 8 — Earle; 7 — Conway; 6 — Barrett; 3 — Cross; 2 — Lloyd; 1 — Callaghan, Johnston, own goal.

F.A. CUP

Appearances and Goalscorers

Appearances: Maximum—2

2 — Webster, Moreline, Callaghan, Dunne, Matthewson, Richardson, Conway, Barrett, Cross, Earle, Lloyd.

Goalscorers: 2—Cross, 1—Conway.

Substitutes used to date: 1—Johnston.

FOOTBALL COMBINATION

Appearances and Goalscorers

25—Strong; 24—Conway (John); 21—Lacy; 18—Carlton, Horne, Tranter; 17—Friend; 16—Fraser, Moreline, Johnston; 14—Richardson; 13—Collman; 11—Seymour, Shrubbs; 9—Pentecost; 8—Bellotti 7—Dunne; 6—Hawley, O'Callaghan; 6—Johnson; 3—Brown; 2—Conway (Jimmy); 1—Hardie, Raine.

Substitutes used to date: 5—Friend; 4—Collman, Graham; 3—O'Callaghan; 1—Shrubbs.

Goalscorers: 10—Johnston; 5—Friend; 3—Strong, Conway; 2—Moreline, Lacy; 1—Richardson, O'Callaghan, Carlton, Tranter Graham.

FOOTBALL LEAGUE CUP

Appearances: Maximum—2.

2 — Webster, Callaghan, Matthewson, Dunne, Earle, Lloyd, Barrett, Carlton; 1 — Pentecost, Tranter, Conway John, Moreline, Brown, Halom.

Substitutes used: 1—Horne, Johnston.

Goalscorers: 3—Earle; 1—Halom.

NEXT HOME GAMES

Saturday, 29th January, 1972

FOOTBALL COMBINATION

CARDIFF CITY

Kick-off 3 p.m.

Saturday, 12th February, 1972

FOOTBALL LEAGUE

PORTSMOUTH

Kick-off 3 p.m.

1971-72
No. 12
Cup Final Voucher



FULHAM

White & Black

LUTON TOWN

Black & Red

DIVISION II TROPHY

Malcolm WEBSTER	1	Tony READ
David MORELINE	2	John RYAN
Fred CALLAGHAN	3	Alan SLOUGH
Jimmy DUNNE	4	Mike KEEN
Reg MATTHEWSON	5	Chris NICHOLL
John RICHARDSON	6	John MOORE
Jimmy CONWAY	7	Peter ANDERSON
Roger CROSS	8	David COURT
Steve EARLE	9	Vic HALOM
Barry LLOYD	10	Don GIVENS
Les BARRETT	11	Gordon HINDSON
George JOHNSTON	12	

Referee
R. B. KIRKPATRICK
 (Leicester)

Linesmen
W. G. V. CLEERE (Red Flag)
J. DAVIES (Yellow Flag)

TODAY'S REFEREE

ROGER KIRKPATRICK, Leicester. Started refereeing in 1949 in schoolboy football, progressing to the Leicestershire Senior League and then to the Southern League before being appointed to The Football League Line in 1964. He became a Football League Referee in 1966.

One of the more important matches he has officiated in was an International Match between Finland and Denmark in 1970.

Mr. Kirkpatrick, a sales director, is married with two sons aged 18 and 16 years. He is very keen on physical fitness and plays a lot of squash, golf and five a side football. Mr. Kirkpatrick is of the opinion that all referees should place at least one Saturday of their season to schoolboy football.

SCORE H.T......

F.T......

SCORERS