

LUTON TOWN



Gould



Fear



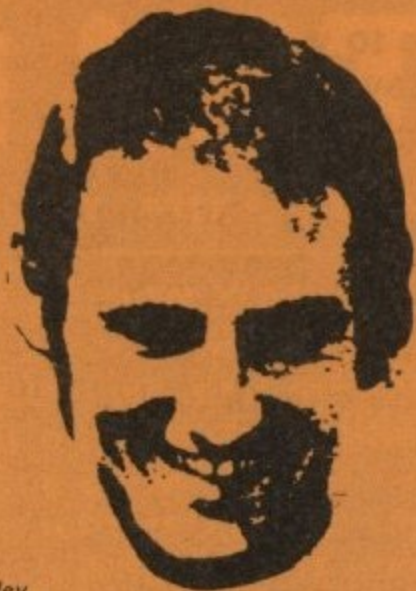
Drysdale



Rodgers



Tainton



Bartley



Sweeney



Emanuel



Cashley



Bond



Gow



Merrick

LUTON TOWN

FOOTBALL AND
ATHLETIC CLUB
LIMITED

KENILWORTH ROAD, LUTON,
BEDFORDSHIRE LU1 1DH
Telephone: 0582-23151

President: T. HODGSON

Vice-Presidents:
LORD HILL, LORD LUKE,
SIR REGINALD PEARSON

Chairman: R. KEENS

Vice-Chairman: L. S. HAWKINS

Directors:
J. A. C. BAIN, R. I. BURR,
ERIC MORECAMBE,
H. RICHARDSON,
D. MORTIMER, R. J. SMITH

Manager: HARRY HASLAM

Secretary: R. READHEAD

Honorary Medical Officers:
Dr C. J. BUCKINGHAM,
M.R.C.S., L.R.C.P., M.B., B.S., D.Obst
Dr P. J. BURROWS,
M.B., B.Ch., D.Obst., R.C.O.G.

Honorary Dental Surgeon
A. HARGREAVES

Honorary Solicitor: E. WALLER

Auditors:
MESSRS, HILLIER, HILLS, FRARY
AND COMPANY

Commercial Manager:
MIKE HARDWICKE

Editor: PHIL CRITCHLEY

Luton Town Football Club
Magazine Vol:2 No:20
Office: 231 Dunstable Road, Luton
Telephone: 0582-30748

Printed by:
PEERLESS PRESS LIMITED
WEST BROMWICH

HARRY HASLAM



On the Cup trail there is a bitter pill for all except the actual Wembley winners. No matter how far you travel, only one side each season escapes the empty feeling at the end of 90 minutes when all you have worked for, all the plans and dreams have flown out of the window.

Why did it happen is often the first words on everyone's lips? It's an inevitable question and one which a thousand words would not possibly answer.

The first letter on my desk on Monday morning was from one of the many fans whom we disappointed at Sunderland, stating that Luton had only themselves to blame for the result by going to Roker Park only to draw.

Everyone is entitled to their own opinion and as long as it's a rational argument, I am willing to listen. In this case, I respect the loyalty this particular supporter has to the club, but I cannot agree with his sentiments on Saturday's game.

If ever a team travelled with one object in mind—to succeed at the first attempt—then that club was Luton at Sunderland. No, sir! We did not go to defend and earn a draw—Luton went there to win.

In retrospect, it might have been better, some people might say, if we had gone for a draw. That may be true. But, throughout this season, and it's not over yet, remember, Luton have been conditioned to work as a progressive unit and, consequently, any patterns or policies other than to attack are now foreign to this club.

What we tried to achieve did not materialise. It was a bad day for the side on the wrong day and, while we lost our form, I think Sunderland employed everything within their powers to try and make sure we did not get a Cup win over them for the final humiliation of sealing three wins over them in a season.

I still maintain that Luton are a better side and I think that this will be accurately reflected in the League table at the end of the term. Few, if any, go through a campaign without a disappointing reverse and though I share the feelings of our supporters who are despondent about the manner of our exit, I feel the club has benefitted from the success in the Cup.

Remember, more than 80 clubs went out before Luton, so a certain measure of pride and thanks are due to the lads who

carried the flag so far and now it is left to Sunderland to defy the odds.

It was good to see Keith Barber make his return after throwing off the handicap of a broken leg in probable record time. His injury, plus that of Barry Butlin, a key figure whose loss is massive for any side who have the accent on attack, was another aspect of the Cup run of luck which came against us.

Though it is impossible to say the result would have been any different had Barry been in, it stands to common sense that there would have been less chance of such a scoreline emerging had he been in his normal role.

I would like to thank all the supporters who made the 300 mile trip to Roker Park and I often got the impression that they accounted for more than half the 50,000-plus crowd.

In mid-week I was pleased to have the opportunity to give the team a chance to enjoy some 'fresh air' when we flew to Italy as part of our involvement in the Anglo-Italian Tournament. I had to leave behind Keith Barber, Gordon Hindson and Peter Anderson which left room for me to include some junior members of the squad. Among them was Paul Price, who seems an excellent prospect.

Our return to domestic League duties brings a welcome for Bristol City, a side whom we respect as one of the strongest, like ourselves, away from home this season. We shall start out this afternoon to re-establish ourselves in the Second Division and I don't believe, anyone should accept that either Burnley or Q.P.R. have won the credits yet. There is many a slip between cup and lip and I shall impress this upon the side and keep them fighting to the finish.

All season we have been flat out for goals so it never ceases to amaze me why the lads have not scored more than two in any match except for an early 4-1 success against Huddersfield Town. However, as manager Alan Dicks pursues similar ideals to myself, Bristol City will be here today as the team from the two top Divisions with the claim of being the top scorers on opponents grounds. If Luton's attack clicks, I am sure this game could be a winner on the 'sweeps' all over the country.

Harry Haslam was talking to Norton Jones

LUTON LOTTERY LINE-UP



LUTON LOTTERY LINE-UP

Left to Right: PHIL CRITCHLEY, MIKE HARDWICKE, JOHN SYMONDS, CATHY DAVIES, TED PAYNE.

OFFICE MANAGER PHIL CRITCHLEY SAYS:

Fund-raising in its present form is out-dated, and because of legal requirements, we cannot always produce the sort of Competition we would like, but we think the new Lottery is the answer to our problems. The new Lottery is an essential part of a broad attack to keep the Club in with a chance of meeting its financial obligations in these days of spiralling costs. We must develop a good working relationship with the supporter—after all, we perhaps come closer than any other of the Club Staff. You must be involved in the Club and feel that something exciting is happening. No matter how small your contribution you are helping the Club. Every penny is spent on improving facilities—the Club have plans for the Stadium and we must provide cash.

Only half-a-dozen Clubs can survive from gate receipts, so the answer is Fund Raising bodies. Luton's Nerve centre is at 231 Dunstable Road, Luton, where we organise Lottery, Bingo and the Programme. Following on from the splendid start made by Mike Skinner, we hope the Lottery will continue his work for the Club and be instrumental in placing Luton Town among the elite.

COMMERCIAL MANAGER MIKE HARDWICKE SAYS:

"The Luton Lottery" is not only the finest source of fund-raising, on a very permanent basis, for the Club, but is also a progressive project which will continue to excite our growing membership every week throughout the years.

It is designed so that no checking or claiming by members is involved and in the same way as "Ernie Bonds" (which bring unexpected and valuable prizes to hundreds of people every week.)

"The Luton Lottery" will provide the same type of excitement and interest and as we realise that we have to have winners in order to have customers, a weekly result sheet will be given to each member. People don't mind losing now and again if at least each of our members will know the name and address of the lucky winners and because the prizes are guaranteed, just how much each has won.

Bristol City's record this season is remarkably similar to our own pattern of producing the best form on opponent's grounds. Like The Hatters, they have won only five home games—yet there was a spell earlier in the season when they actually totted up five away wins in seven outings.

No doubt City manager Alan Dicks has spent as many puzzled hours as Harry Haslam in trying to work out why his team cannot put their best feet forward at Ashton Gate.

At a distance, it seems that he has concentrated his efforts at finding a remedy by juggling with the attack, though this may seem a little surprising in view of City's achievement in scoring more away goals than any other Second Division side up until last weekend.

Ever since last season, Mr Dicks has searched for a new striker and when he finally got his man in the well-travelled Bobby Gould, he had to make a controversial move in selling regular top scorer John Galley to Nottingham Forest.

This took place in December, with City paying a reported £50,000 to West Bromwich Albion for the gutsy style of Gould and taking in exchange around £30,000 for Galley. There is another link between the two players in that both played for Wolves.

Gould arrived in time to spark hopes that City's away form could lift them to a Luton-style Cup run. He started off with a last-minute equaliser at Portsmouth, enabling City to go through after a replay and then draw a tough test at Wolverhampton. City were always in that game, but one goal by Wolves' scoring starlet, John Richards, put an end to their ambitions.

Since then, City have been working on improving their League position. It was astounding that they did not win a home fixture until pipping Sunderland 1-0 on 25th November in their ninth Ashton Gate game of the season.

They have since lost only once on local territory, but, just to emphasise the strange nature of their season, the away sequence has dipped badly in recent weeks. The last travelling success was at Carlisle in December and the last six matches have gone by without a win.

Mr Dicks, still believing that there is a nucleus for a promotion side in his grasp, used the final week before the transfer

TALKING ABOUT BRISTOL



deadline to make further alterations to the attack.

Liverpool, having paid close attention to the prospects of West County striker Peter Spiring, eventually tempted City to part at a £60,000 fee. City promptly spent half of that sum on Scottish forward Don Gillies, who hails from Morton, the club which sold City right-back Gerry Sweeney less than two years ago.

Spiring was very effective early in the season, scoring in five of the first eight outings, but he faded out of the picture for a time and City felt able to accept Liverpool's big cheque. So, in the space of two seasons, they have sold two home-bred strikers to the First Division, having taken their first-ever £100,000 sum for Chris Garland, now with Chelsea.

There have been several other important changes in the search to lift City out of their regular mid-table station. One of the most successful imports has been Welsh international contender John Emanuel, who was discovered after winning an amateur cap while playing in the Welsh League.

In recent times, Emanuel has teamed up in midfield with Scotsman Tom Ritchie, who has displayed an aptitude for scoring useful goals when following in behind the main attack.

Like Luton, City also favour the idea of two wingers when possible and they have an especially dangerous right-flank operator in local discovery Trevor Tainton. He caused Wolves' Wembley-hopeful defence more than a single problem in the Cup-tie at Molineux.

All in all, it seems that City have gathered together a useful outfit which has the youth to suggest better things ahead. They know, also, that the support is on hand if City ever show signs of regaining the First Division status that they lost early this century.

They are among the few Second Division sides who can boast of every gate topping the 10,000 mark this season.

Bristol City 1972-73 . . . (Back row): Trevor Tainton, Ray Cashley, Len Bond, Keith Fear. (Centre row): Gerry Sweeney, John Galley (now Forest), David Bruton, David Rodgers, David Merrington, John Emanuel. (Front row): Brian Drysdale, Peter Spiring (now Liverpool), Gerry Gow, Geoff Merrick, Les Wilson, Danny Bartley, Trevor Jacobs.

Picture: Evening Post, Bristol.

BRISTOL CITY HISTORY . . .

Founded: 1894. Ground: Ashton Gate, Bristol. Record attendance: 43,335, against Preston North End (F.A. Cup Fifth Round), 16th February, 1935. Division One Runners-up: 1906-07. Division Two Champions: 1905-06. Division Three (South) Champions: 1922-23, 1926-27, 1954-55. Runners-up: 1937-38. Division Three Runners-up: 1964-65. F.A. Cup Runners-up: 1909. League Cup Semi-Finalists: 1970-71. Record Scorer: Don Clark (36) in 1946-47.

after the match why not visit

CÉSARS

TONIGHT
FREDDIE (Parrot Face) DAVIS
NEXT WEEK
EDWIN HEATH

Dine, Dance or Drink 8 pm—2 am
Telephone: LUTON 51357

Luton v Bristol City, Past League Results . . .

	P	W	D	L	F	A	P	Biggest Win . . .
Home	13	7	5	1	26	11	19	4-0 at home in 1936-37
Away	14	4	2	8	14	31	10	Worst Defeat . . .
Total	27	11	7	9	40	42	29	6-0 away in 1926-27

Six-Year Record . . .

	P	W	D	L	F	A	P	P	W	D	L	F	A	P	
71-72	42	18	10	14	61	49	46	68-69	42	11	16	15	46	53	38
70-71	42	10	11	21	46	64	31	67-68	42	13	10	19	48	62	36
69-70	42	13	13	16	54	50	39	66-67	42	12	14	16	56	62	38

MANAGER CAPTAIN

Alan Dicks, now in his sixth year in charge at Ashton Gate, served his managerial apprenticeship in the dynamic atmosphere created by Jimmy Hill at Coventry City.

He was Hills' assistant through the exciting period when the Sky Blues lifted off from Division Three and soared up to the First Division in 1967. A lot of Hill's flair rubbed off on Mr Dicks during this period of success and he had the ambition to put the ideas into practice in his own right.

The chance arrived in October, 1967, when Bristol City made him the highest-paid boss in their history. He was tempted by the untapped potential in Bristol, a huge City deprived of First Division football and yearning for a Coventry-style burst to the top.

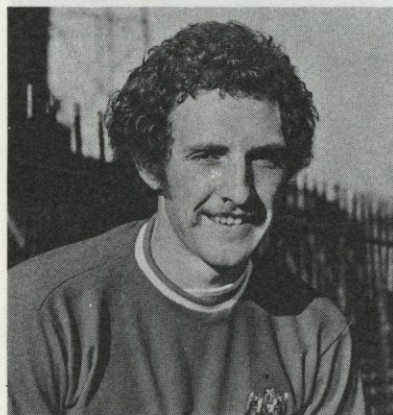
Mr Dicks was one of the youngest managers in the League at the age of 33—yet his experience was quite wide after several years at Highfield Road. After playing at centre-half for Chelsea and Southend United, the Londoner joined Coventry City in 1962 and continued to play in the reserves when appointed assistant manager.

At Coventry, he learned a lot about promoting a club with the public—and, most important, laying down the plans for a youth scheme. He has placed great emphasis on young talent at Bristol and has been rewarded by appearances in the semi-final of the F.A. Youth Cup in 1970 and again this year.

At first-team level, City have yet to strike a true promotion blend, but Mr Dicks believes they are nearer to their target than this term's results suggest.



ALAN DICKS



GEOFF MERRICK

Geoff Merrick, 22-year-old Bristol City skipper and back-four specialist, overcame serious injury worries to be one of the youngest captains in the Football League last season.

Born in Bristol, he emerged among the finest schools players ever produced in the City and captained the 1966 England Boys side, leading such players as Dave Thomas (Queens Park Rangers), Steve Seargeant (Everton), Lyndon Hughes (West Bromwich Albion), Steve Bowtell (Orient) and Malcolm Webster (Fulham).

Bristol City were delighted when Geoff agreed to map out a professional career at Ashton Gate, and within two years of signing as an apprentice, he was in the League side at left-back.

Unfortunately, he damaged knee ligaments in only his second appearance, and it was a long road back to full fitness. He didn't establish a first-team spot until the 1970-71 campaign, but his progress since then has been one-way to the top.

Although standing only five feet nine inches tall, Geoff has made his mark as a central defender and makes up for his lack of height with superb timing in going for the high balls.

City had no worries about making him captain last season and he finished his first ever-present campaign with the supporters' Player of the Year award. He has played so consistently well that Bristol folk wonder why he has not added Under-23 honours to his schools caps.

Certainly, many good judges would put him in the same class as Kevin Beattie (Ipswich Town) and Willie Maddren (Middlesbrough), who have worn the number six shirt for the Under-23's.

POINTS ON PLAYERS

DANNY BARTLEY—*outside left*. Born Paulton near Bristol, and joined City as an apprentice. City had no hesitation about up-grading him to the full staff on his 17th birthday, in 1964, and, two years later, he graduated to the England Youth-team, accompanying them to Yugoslavia in May, 1966. Had made 82 League appearances before this season.

LEN BOND—*goalkeeper*. The departure of long-serving Mike Gibson has given Ilminster-born Bond the chance to press for a League place. A former apprentice who turned professional in 1971, he reached the first-team last season for two games. Has had further games this term.

RAY CASHLEY—*goalkeeper*. Bristol-born player who was a full-back when signed by City in August, 1970. He switched to goalkeeping with outstanding success in the last two seasons and is now regarded as first choice.

BRIAN DRYSDALE—*full-back*. Another player who swapped positions to make the grade in League soccer. Born in Durham, he was an inside-forward when joining Lincoln City at 17, and had only a few first-team outings there. He almost gave the game up, but joined Hartlepool and became an automatic choice at left-back. City snapped him up for a modest fee in 1969-70 and he didn't miss a League game in his first three seasons.

JOHN EMANUEL—*midfield*. City's Welsh scout pulled off a scoop when spotting John playing in Welsh League soccer two years ago. City signed him on amateur forms and after a successful 'trial' against Bristol Rovers in May, 1971, he

was taken on the professional staff. Has been a regular for two seasons and was in the Welsh international squad at Wembey.

KEITH FEAR—*forward*. An outstanding product of City's youth scheme who signed for the club after playing for the Bristol and England Senior Schools sides in 1969. Has captained the Gloucestershire Youth side and was City's skipper when they reached the F.A. Youth Cup semi-final in 1970. Made his League debut in October, 1970.

GERRY GOW—*midfield*. A young Scot from Glasgow who has developed into a good all-round player since making his debut in April, 1970. He was City's penalty expert with five successful efforts last season.

DON GILLIES—*forward*. City's latest signing, he arrived from Morton for a sizeable fee just before this month's transfer deadline and made his debut a fortnight ago. He first got into Morton's side in November, 1971, scoring on his debut.

BOBBY GOULD—*forward*. Coventry-born striker who made City the fifth club of his career when joining them from West Bromwich Albion for a reported £50,000 in December. Was top scorer with 24 goals when Coventry won Division Two in 1966-67 and the following year moved to Arsenal for £90,000. Switched to Wolves for £50,000 to become their top scorer in 1970-71 and joined West Bromwich Albion for a similar sum last season.

COLIN HALL—*forward*. Former Nottingham Forest forward who had a spell with Bradford City before being given a

free transfer after their relegation from Division Three last year. Joined City on trial and has played in the League team.

TOM RITCHIE—*midfield*. Tall, skilful player who was spotted in Scotland while playing for Bridgend Thistle. Signed for City, along with younger brother Stephen, in the 1969 close season and has had his first chance of League action this term.

DAVID RODGERS—*centre-half*. The son of former City centre-forward Arnold Rodgers, David joined City from the Bristol Schools team. Made his League debut in October, 1970, and has become first choice at number five this season.

GERRY SWEENEY—*right-back*. City paid £25,000 to sign Gerry as a forward in May, 1971, but he finished his first season in England at right-back and has remained there for the last year. As a youngster, he was given a free transfer by Celtic and joined Morton to play a big part in their promotion in 1968. Represented the Scottish League in 1969-70.

TREVOR TANTON—*winger*. Another local discovery who has made rapid strides since switching to the wing last year. He made his League debut back in 1967 and clocked up his 100th full Second Division appearance last season.

LES WILSON—*utility*. Canadian-born player who trained with his country's World Cup squad before coming to England and winning a professional contract with Wolves. He played in over 100 first team games for the Midlanders—filling a variety of positions—and was transferred to City in November, 1971.

POINTS ON PLAYERS

Official opening
Wednesday
May 9th 1973



Strathmore Hotel

Exciting 'Trews' Night Club! Bars! Banqueting for up to 350!

This exciting new development in the Arndale Centre will offer to Luton "Trews" Night Club, "Highlander" Bar, "Angeline's Restaurant, "The Great Straw Hat" Coffee Shop and Banqueting for up to 350 in the Arndale Suite. 151 fully serviced bedrooms and 3 luxury Penthouse Suites.

All enquiries to the Sales Office, 1a Bute Street, Luton

Strathmore Hotel, Arndale Centre, Luton.
Telephone 34199

A Thistle Hotel



MAN ON THE SPOT

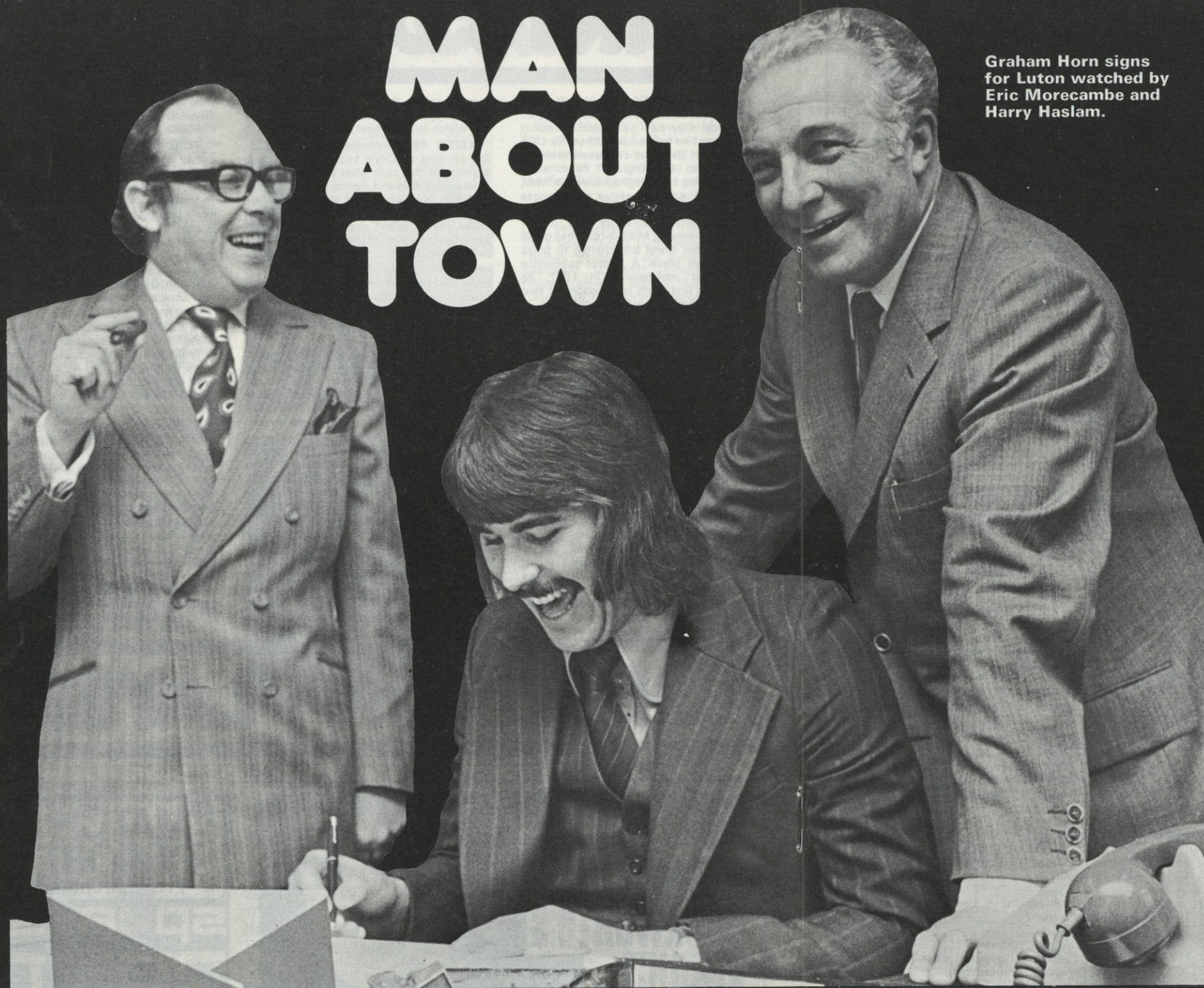
ROGER DUCKWORTH'S VERDICT



AND MATCH REPORT EVERY SATURDAY

SPORTS POST

MAN ABOUT TOWN



Graham Horn signs for Luton watched by Eric Morecambe and Harry Haslam.

GRAHAM HORN

One of the true agonies of a player with first-team qualifications, and who is a member of the League squad, is the knowledge that though he may look equally involved in any success, it can sometimes be only an unfortunate surface claim.

When Westminster-born Graham Horn joined us from Portsmouth, every door in the club opened for him as a welcome which would be laid down to greet any other new addition. But circumstances ruled that Graham had to manufacture make-believe ear plugs almost every corner he turned in order to shut himself off from the Cup chatter which hummed around the Kenilworth Road corridors.

Points and topics which made interesting conversation for his club colleagues were something which Graham was unable to share because he knew that even if Luton went all the way to Wembley, he could be nothing more than a V.I.P. spectator.

There would be no goalkeeping glory for Graham because of an almost routine affair in which he was involved a couple of months ago for his former team at Fratton Park when Portsmouth entered—and made their exit—from the Cup after two games against Bristol City. "It was a disappointing 4-1 defeat in the replay and, to make it worse, I got a second-half knock which just about completed the day," Graham told me.

Little did he realise that the repercussion from that game would charter him to lose the chance of representing a side in the quarter-finals of the same competition because he was 'Cup-tied' and ineligible to play for another team.

Yet, the man who now competes with Willie Carrick for first-team recognition—because of the bad injury blow to Keith Barber—does not show the frustration which could normally be associated with a man in his position.

"The invitation to join Luton was a proper shock and I had not the slightest idea anything was on until Pompey manager Ron Tindall told me. I signed without hesitation, for it was the chance I was looking for and whether someone told me at the time that Luton would win the Cup with me on the touchlines—it didn't matter because it was a sign things were on the move for me."

It was reported that Luton paid £25,000 for the Portsmouth 18-year-old. But, technically, it was due to Arsenal because Graham was only coming to the halfway stage of an agreed loan period on Portsmouth's books—"a move I made in the cause of ambition. I felt I was dragging my feet at High-bury and getting nowhere."

That's no reflection on manager Bertie Mee or the player concerned, because personal pride kept pushing Graham Horn for a first-team spot. But when promotion to the Football Combination side was followed by a step back into the third-team because of the 'solidarity' of Bob Wilson and Geoff Barnett, Graham got the message that he might do better for himself if he made a complete break.

He was a prospect which Portsmouth were glad to get their hands on and Graham insists that he will be ever grateful to manager Ron Tindall for creating a new opportunity for him.

FIXTURES...

FOOTBALL LEAGUE DIVISION TWO—1972-73

Date	Opponents	Att	F A	Date	Opponents	Att	F A
Aug 12	Cardiff City	16,364	1-2	26	Sheffield Wednesday	15,799	0-0
19	Preston North End	11,507	1-0	30	Preston North End	9,638	0-2
26	Orient	6,494	1-0	Jan 6	Orient	8,344	1-1
30	Oxford United	10,891	0-1	13	Crewe Alexandra (FAC 3)	9,411	2-0
Sept 2	Huddersfield Town	8,133	4-1	20	Huddersfield Town	3,871	2-1
5	Birmingham City (LC2)	20,962	1-1	27	Nottingham Forest	10,083	1-0
9	Nottingham Forest	9,495	1-0	Feb 3	Newcastle United (FAC4)	42,170	2-0
13	Birmingham City (LC2 replay)	13,806	1-1	10	Brighton and Hove Albion	11,404	0-2
16	Brighton and Hove Albion	11,627	2-1	17	Cardiff City	10,442	1-1
20	Birmingham City (LC2 2nd replay)	11,139	0-1	24	Bolton (FAC5)	39,556	1-0
23	Sheffield Wednesday	18,913	0-4	26	Millwall	10,504	2-3
26	Swindon Town	8,469	2-0	Mar 3	Blackpool	6,947	1-1
30	Burnley	12,197	2-2	10	Sunderland	12,458	1-0
Oct 7	Blackpool	12,073	2-2	17	Sunderland (FAC6)	53,156	0-2
14	Sunderland	13,394	2-0	24	Bristol City		
18	Portsmouth	9,813	2-2	27	Fulham		
21	Hull City	11,560	1-2	31	Carlisle United		
28	Bristol City	13,562	1-0	April 7	Fulham		
Nov 4	Swindon Town	10,596	0-1	14	Queen's Park Rangers		
11	Portsmouth	7,571	2-2	21	Aston Villa		
18	Aston Villa	29,144	2-0	23	Middlesbrough		
25	Carlisle United	10,091	0-1	24	Burnley		
Dec 9	Queen's Park Rangers	13,670	2-2	28	Oxford United		
16	Millwall	11,550	2-2		To be arranged—Hull City		
23	Middlesbrough	10,122	1-0				

MID-WEEK LEAGUE FIXTURES—1972-73

Date	Opponents	F A	Date	Opponents	F A	Date	Opponents	F A
Aug 23	Gillingham	7-0	8	Northampton Town	4-2	17	Orient	3-1
30	Brighton and Hove Albion	1-0	15	Southend United	1-1	24	Southend United	0-1
Sept 6	Cambridge United	5-0	21	Charlton Athletic	1-2	31	Charlton Athletic	4-1
27	Cambridge United	1-1	29	Colchester United	5-1	Feb 7	Watford (LC)	1-1
Oct 11	Millwall	2-1	Dec 5	Northampton Town	1-1	14	Watford (LC)	5-1
18	Watford	1-1	13	Colchester United	1-0	28	Northampton (LC)	3-0
25	Watford	1-1	Jan 3	Millwall	3-2	Mar 6	Northampton (LC)	0-1
Nov 1	Gillingham	1-1	10	Brighton & Hove A	5-0	14	Orient	0-0

Up to and including Saturday, 17th March, 1973

LEAGUE DIVISION TWO

*League Games Only

HOME		AWAY		*HOME GATES		LEADING SCORERS—League, F.A. Cup League Cup and Other Clubs Goals	
P	W D L F A	P	W D L F A	Best	Average		
33	8 6 2 30 17	9 7	1 23 13 47	BURNLEY	16,927	13,219	Fletcher 11, Dobson 10, James 8, Casper 7
33	11 4 1 39 13	6 8	3 23 22 46	Q.P.R.	22,518	14,025	Givens 24, Bowles 14, Leach 11, Francis 7, Thomas 7
35	9 6 3 29 14	6 4	7 19 25 40	BLACKPOOL	25,277	11,122	Suddick 12, Ainscow 10, Dyson 8, Rafferty 7
35	12 3 3 37 20	3 6	8 17 25 39	SHEFFIELD W	30,197	18,541	Joicey 19, Sunley 11, Craig 10
33	10 4 2 28 12	4 6	7 22 26 38	FULHAM	17,576	10,814	Earle 14, Mitchell 11, Mullery 6
33	9 5 4 22 15	5 5	5 18 22 38	ASTON VILLA	38,637	29,196	Evans 11, Graydon 9, Rioch 9, Vowden 7
35	10 4 3 21 11	3 7	8 13 26 37	MIDDLESBROUGH	24,145	10,949	Hickton 9, Mills 7
34	11 1 4 26 12	4 5	9 14 21 36	OXFORD UNITED	13,412	9,067	Curran 11, Cassidy 8
32	5 8 4 22 19	8 2	5 18 17 36	LUTON TOWN	15,799	11,225	Aston 12, Butlin 5
34	11 3 3 29 14	3 4	10 20 26 35	MILLWALL	13,207	10,153	Wood 17, Bolland 16, Cripps 7
32	8 6 3 34 18	3 5	7 15 24 33	HULL CITY	13,580	9,436	Pearson 15, Holme 10, Houghton 7
34	5 7 4 20 15	6 4	8 24 29 33	BRISTOL CITY	20,490	13,166	Gow 11, Gould 11
34	9 5 3 24 15	2 6	9 12 25 33	NOTTINGHAM F	18,082	9,718	Galley 14
33	5 5 7 18 20	5 4	7 20 23 29	PORTSMOUTH	16,419	9,918	Hiron 9, Piper 9, Jennings 6, Lewis 6, Reynolds 6
35	6 8 4 25 22	2 5	10 16 32 29	SWINDON TOWN	15,304	10,377	Treacy 11, Peplow 7
33	5 5 5 15 19	5 4	9 17 33 29	PRESTON NE	18,822	10,310	Bruce 9, Young 6
32	9 4 4 36 20	1 4	10 7 20 28	CARLISLE UNITED	17,842	7,999	Owen 12, Laidlaw 11, Martin 8
28	7 5 2 23 10	2 4	8 15 25 27	SUNDERLAND	39,222	17,076	Halom 12, Tueart 11, Hughes 9, Lathan 7
33	7 5 4 22 14	1 6	10 13 27 27	ORIENT	10,532	6,121	Queen 8, Downing 7, Fairbrother 6
34	5 9 4 18 18	1 6	9 13 26 27	HUDDERSFIELD T	12,840	7,958	Gowling 14
32	10 1 5 26 16	0 4	12 8 32 25	CARDIFF CITY	16,364	11,300	McCulloch 12, Woodruff 7, Bell 6
33	3 6 6 21 26	1 4	13 13 46 18	BRIGHTON HA	18,699	14,975	Robertson 12, Murray 8, Beamish 7

TOWN TALK

Can you guess the gate for our next home game against Fulham on 7th April? *Pickwick International*, of Leighton Buzzard, again offer six long playing records for the competition and your entries should reach Luton Town Promotions, 70-71 Kenilworth Road, Luton, Bedfordshire by mid-day on Saturday, 7th April.

Winners of the Sunderland Competition: Mr T. Kirby, 17 Syr David's Avenue, Pencisely, Cardiff. Master C. Ayres, 34 Grasmere Avenue, Luton. Mr K. Nichols, 55 Westfield Road, Bletchely. Mr T. Nardi, 54 Shaftesbury Road, Luton. Master A. Winsor, 79 High Road, Soulbury. Mr S. B. Whiting, 94 Grove Road, Harpenden.

FORTHCOMING MATCHES

Wednesday, 4th April (7.30 pm)

Anglo-Italian Tournament
LUTON TOWN v FIORENTINA

Saturday, 7th April (3.00 pm)

League Division Two
LUTON TOWN v FULHAM

Mid-week League and Cup Appearances and Goalscorers

	LEAGUE		CUP	
	App	Goals	App	Goals
Carrick	18	—	3	—
Price	20	—	4	—
Shanks	7	1	—	—
Wainwright	9	4	—	—
Goodeve	17	—	4	—
Moore	8	2	—	—
Sparks	14(2)	1	2(1)	—
Hindson	11	4	—	—
Hales	20	19	4	4
Jones	17(2)	2	1	—
Harfield	11(3)	2	—	—
Litt	17(1)	9	2	—
Robinson	—(2)	—	—	—
Slough	3	—	—	—
Gilchrist	2(2)	—	—(1)	—
Hatch	5(5)	—	—	—
Castiello	5	—	—	—
Garner	2	1	—	—
Faulkener	7	1	4	—
Ealing	1(3)	—	—	—
Fern	5	—	2	1
Bath	1	—	—	—
Anderson	1	—	3	—
French	4	—	3	—
O'Connor	6(1)	1	4	—
Busby	4	—	3	4
Carr	1	—	—	—
John Ryan	1	—	—	—
Halom	3	1	—	—
King	1(1)	—	1(1)	—
Malcolm	1(1)	—	1(1)	—
Horn	—(1)	—	1	—
Bevis	—	—	1	—
Rouse	—	—	1	—
Barber	1	—	—	—
Own Goal	—	1	—	—

Mid-week League Table

	P	W	D	L	F	A	P
Luton Town	20	12	6	2	49	17	30
Southend	18	10	6	2	35	14	26
Brighton HA	16	7	6	3	27	22	20
Northampton	17	7	5	5	33	22	19
Orient	18	7	4	7	23	26	18
Watford	16	7	2	7	20	26	16
Charlton	17	6	4	7	27	34	16
Cambridge	18	6	3	9	27	32	15
Millwall	17	4	3	10	27	37	11
Gillingham	15	3	5	7	14	29	11
Colchester	16	2	2	12	12	35	6

PLAYER OF THE YEAR AND SUPPORTER OF THE YEAR—72-73

With only a few more weeks remaining of the 1972-73 season the time is once again approaching when the thoughts of the Bobbers and Supporters Club members must turn towards nominating their choice of persons they would like to see become this year's recipients of the PLAYER OF THE YEAR and SUPPORTER OF THE YEAR trophies.

The awards this year are to be presented at two separate functions, both of which will be held in the Hatters Club, Maple Road, Luton.

The first award to be presented will be the PLAYER OF THE YEAR and this will take place during a Buffet Dance to be held on Monday, 16th April. Booked to appear is a first-class band and cabaret artiste and this evening has all the makings of being one of the most memorable yet to be held in the Hatters Club. Tickets which are available to both members and non-members of the Bobbers and Supporters Club are priced at £2 and will be strictly limited in numbers and sold on a first come first served basis. Those wishing to be present are advised to submit their application form as early as possible so as not to be disappointed. This is the evening when not only will you be able to meet the playing staff but also show your appreciation to the winner of the trophy and his team-mates for the tremendous efforts they have put in this season and for the success achieved.

The date of the Dance during which the SUPPORTER OF THE YEAR trophy is to be presented will be announced later.

All nominations and requests for tickets must be received by first post on Thursday, 12th April.

Please book me/my party on the one-day visit to Rome.

I nominate I enclose herewith £.....

as my Player of the Year for 1972-73. for passengers.

Name.....

Membership Number.....

Completed forms to: John K. Smylie, Supporters Club Shop, 125 Oak Road, Luton, Bedfordshire.

PLAYER OF THE YEAR DANCE

I request tickets at £2 each and enclose the appropriate remittance together with a stamped addressed envelope for reply.

Mail to: John K. Smylie, Supporters Club Shop, 125 Oak Road, Luton, Bedfordshire.

Your Road Route to Fulham on Tuesday, 27th March...

Leave by London Road (A.6). After 1½ miles on, roundabout, take second road. M.1 follow signs "London M.1". Scratchwood Service area—20¼ miles. At end of motorway, branch right on to A.41. Hendon to Golders Green, then turn right on to the A.406 (North Circular Road). Staples corner, continue ahead after 2½ miles, turn left on to the A.404 (Harrow Road). Willesden, Scrubbs Lane, Wood Lane (Shepherds Bush), Shepherds Bush Road and Fulham Palace Road (A.219). Then follow signs for football ground.

Your Road Route to Carlisle on Saturday, 31st March...

Leave by Dunstable Road (A.505) to join the M.1 motorway. Follow signs "Birmingham M.1", at intersection 19 follow signs "North West, Birmingham M.6", at intersection 8 follow signs "North West M.6", Forton service area, follow signs "Penrith M.6". Tebay service area, Penrith by-pass motorway (Skirsgill intersection 40), follow signs "North, Carlisle A.6", Golden Fleece (interchange 42), follow signs "Carlisle A.6". Carleton, Harraby to Carlisle (London Road). Total mileage: 277 miles.

ANGLO-ITALIAN TOURNAMENT LAZIO (Rome) v LUTON TOWN (One-day by Jet to Rome—£27)

Wednesday, 2nd May—Evening kick-off

★ Jet flight from Luton Airport to Rome and return.

★ Coach transfers in Rome for the match at the Olympic Stadium

★ Lunch on the outward flight and Refreshments on the return flight.

★ Representatives in attendance in Rome.

★ Sightseeing in Rome (time permitting).

★ Airport Taxes and Insurance. (Supplement for match ticket)

Approximate Timings

Depart Luton Airport—1030 hours on the 2nd May.

Return landing at Luton Airport—0200 hours on the 3rd May.

A valid Passport is required for this visit.

Please book me/my party on the one-day visit to Rome.

I enclose herewith £.....

for passengers.

NAME.....

ADDRESS.....

Telephone (Home).....

Number (Business).....

Payment of £5 deposit per person at the time of booking. The balance to be paid 28 days before departure.

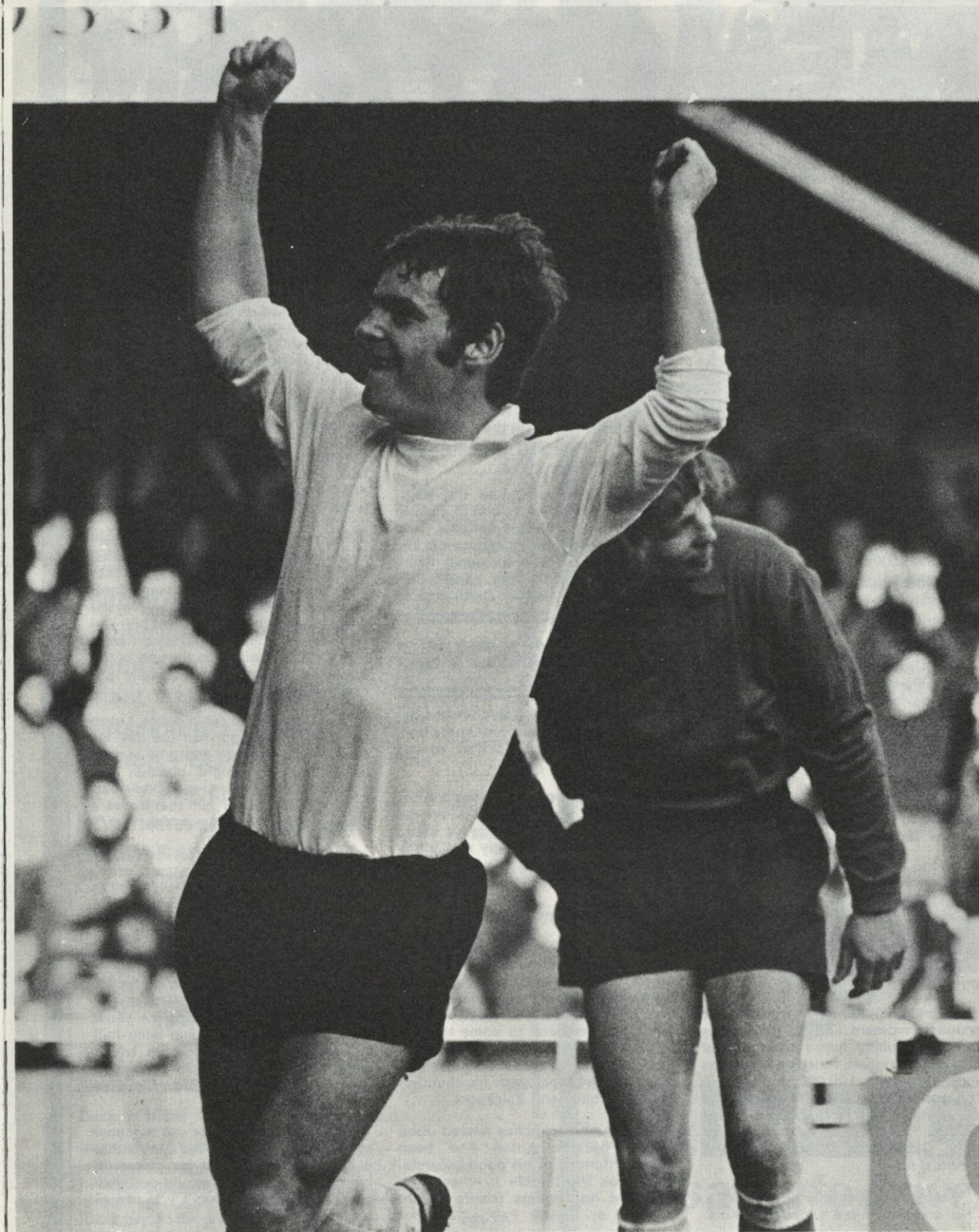
Send this form to: Luton Town F.C., 70 Kenilworth Road, Luton, Bedfordshire.



TOWN IN ACTION

Luton proved superior to Sunderland twice in three games this season—but the Wearsiders' one success brought the glory of a Cup semi-final place. Pictures from the last two meetings show . . . (Right): Don Shanks celebrating his League winner at Kenilworth Road . . . (Above): Cup action as John Ryan and John Moore block a Sunderland attack . . . (Left): Old pals together, John Moore and ex-Hatter Vic Halom.

Pictures: Evening Post and John Lines.



MEMORY MAN

In the first and only F.A. Cup Final in which Luton Town have appeared—the prestige occasion of 1959—a soccer-crazy six-footer called John Groves was one of the key-men at right-half in a defence which knew their job just as well as an attack that had notched up 19 goals on the road to Wembley.

It was a really proud moment for the former Derbyshire schools player because John had reached the dream point of every professional's career—and and it is even greater when you are following in your father's footsteps!

John, now located back in his native surroundings where he brightens the lives of others in his business as an electrical contractor, is still 'sold' on soccer, even though it does not entail the actual contact like the good old days.

"Football has been the first and foremost topic in the family ever since I was old enough to understand the game," he says. "I suppose it can be traced back to the success of my father, Arthur Groves, who was a player with Derby, Portsmouth and Blackburn, as an inside-forward in the 'Thirties."

But though Dad starred for three very distinguished clubs of that era, it was his son who had the first satisfaction of featuring in a Cup Final, a lifetime's experience that is still considered the greatest moment in the Groves' family football history.

Luton blazed through the earlier stages to leave Leeds, Leicester and Ipswich in charred ruins as Messrs. Brown, Bingham, Morton and Gregory scorched the side through to the Final with masterly hauls that meant four and five-goal humiliations for the opposition.

It brought Kenilworth Road its proudest moment and no player was more particularly happy to stride out into the springtime sunshine before the most privileged 100,000 audience in the world. It was a classic wrecked by an injury to Nottingham Forest winger, Roy Dwight, and ruined for John Groves and Company, by the eventual result.

"I took that defeat hard," says John. "No one was more choked and dis-

appointed in the dressing room after. It was complete deflation, something which I have never suffered before or since. After the first 20 minutes of the game, we seemed to have all the play. It was ridiculous as we went on, to imagine we could be beaten. But it was not Luton's day and no doubt many other players have felt the same way as I did."

John was first moulded in a high standard of schools football in the immediate years after the War. The only time he had a break from the boots and ball was when he was in the Baseball Ground of Derby County, his local heroes who were the first team to win the Cup when English soccer picked up again.

It was such loyalty to the Rams which first introduced John to a player who was later to be his manager, Dally Duncan, one of the many stars in the Derby team which included Raich Carter, Peter Doherty and Billy Steel. "I even remember Derby signing

JOHN GROVES

Steel for £15,000 one day when I got hold of a paper on the way home from school—and I couldn't wait to see him play."

Things began to get serious for one of Derby's best juniors when he accompanied the representative squad on trips round the county to Carlisle, Leicester and across to neighbouring Nottingham, with future top names, Jeff Whitehead, Dennis Viollet and Stan Anderson, members of the same team.

The local club snapped up two others, Ray Young, a long-serving centre-half, Jimmy McQuillan, who was only 16 when he made Derby's first-team, and later to come through for Baseball Ground duty was Ray Parry, who went on to belt fear into many a goalkeeper with his thunderbolts for Bolton and Blackpool.

But County's clutches missed John Groves because Luton had been quietly informed of his good progress. They took the trouble to check him over and his teenage talents caught the eye at Crystal Palace. It's not

difficult to guess who spilt the beans to Kenilworth Road because the manager at that time was Dally Duncan and during his playing days at Derby, John's father had been one of his closest friends.

After joining Luton on his 16th birthday, John got his professional 'papers' a year later. But before he had been groomed into first-team shape, another set of papers dropped through his letter box and it meant a transfer to H.M.S. North Wales for a couple of years.

"I was stationed at Towyn and had so much football I actually enjoyed it. We had a cracking side, with Ronnie Clayton, Johnny Newman, Gordon Nutt and Phil Woosnam in the team and the only time I missed a game was when Luton reserves wanted me."

The first of over 250 senior appearances for Luton arrived in 1954 against Leeds. "I had the number eight shirt and opposition to me was John Charles. Better players than myself never tore up any trees against him and I had to wait, really, until Luton went into the First Division at the end of the following season before I really got established.

"By a remarkable coincidence, Luton switched me to right-half the day we played against Leeds and who should be in the inside-right position but John Charles? I think everybody had so much respect for him that it was a pleasure just to compete against him."

After Wembley, in 1959, had come and gone, John Groves stayed on at Kenilworth Road for a few seasons before moving down to Bournemouth. "I had a couple of happy years under manager Reg Flewin, the former Portsmouth player, before a back injury finished me."

Eight years ago John Groves got back on the road to where he came from. The former Cup Final wing-half still pays homage to the club which overlooked him nearly 25 years ago with regular trips to see Brian Clough's team.

But, irrespective of the sad outcome at Wembley, John Groves knows that if he had concentrated his career on his own doorstep, he would probably never have known what it was like to walk out at Wembley.

SCORES

LIST ONE

Birmingham v Coventry	A	
C Palace v West Ham	B	
Ipswich v Everton	C	
Leeds Utd v Wolves	D	
Leicester v Stoke	E	
Liverpool v Norwich	F	
Man City v Arsenal	G	
Newcastle v Chelsea	H	
Sheffield U v Derby	K	
Tottenham v Man Utd	L	
W. B. A. v Southampton	M	
Brighton v Swindon	N	

LIST TWO

Burnley v Millwall	A	
Fulham v Sunderland	B	
Middlesbrough v Aston Villa	C	
Nottm Forest v Sheff Wed	D	
Orient v Huddersfield	E	
Portsmouth v Carlisle	F	
Preston v Cardiff	G	
QPR v Blackpool	H	
Bournemouth v Grimsby	K	
Bristol Rovers v Watford	L	
Charlton v Blackburn	M	
Southend v Bolton	N	

BOBBERS & SUPPORTERS CLUB APPLICATION FOR MEMBERSHIP

Name

Address

Date of Birth

Date of Application

Remittance enclosed: *25p—Bobbars Club facilities only
*50p—Bobbars and Hatters Club facilities
*Delete where applicable

Completed forms should be returned to either Mike Ogden, Bobbers Club, Beech Hill Path, Luton or John K. Smylie, Supporters Club Shop, 125 Oak Road, Luton.

Viva wins 6-nil!

With Viva you get six important 'extras', at no extra cost.

Factory applied underseal, fitted front seat-belts and alternator on the Viva Standard and those plus power-assisted front discs, wall-to-wall carpets and heated rear window on all other Vivas.

Most other manufacturers charge you for those extras. Or they don't offer them at all.

That's why you're on to a winner with Viva.

Test drive a Viva at your Vauxhall dealer soon.



-it's a joy to drive!

TEAMS

Luton Town

White Shirts, Black Shorts

- 1 KEITH BARBER
- 2 JOHN RYAN
- 3 BOBBY THOMSON
- 4 DON SHANKS
- 5 ALAN GARNER
- 6 JOHN MOORE
- 7 JIMMY RYAN
- 8 PETER ANDERSON
- 9 VIV BUSBY
- 10 GORDON HINDSON
- 11 JOHN ASTON
- 12

Bristol City

Red Shirts White Shorts

- 1 RAY CASHLEY
- 2 GERRY SWEENEY
- 3 BRIAN DRYSDALE
- 4 JOHN EMANUEL
- 5 DAVID RODGERS
- 6 GEOFF MERRICK
- 7 TREVOR TANTON
- 8 TOM RITCHIE
- 9 DON GILLIES
- 10 GERRY GOW
- 11 BOBBY GOULD
- 12

GOALSCORERS

LUTON TOWN		BRISTOL CITY	
HALF TIME		HALF TIME	
FULL TIME		FULL TIME	

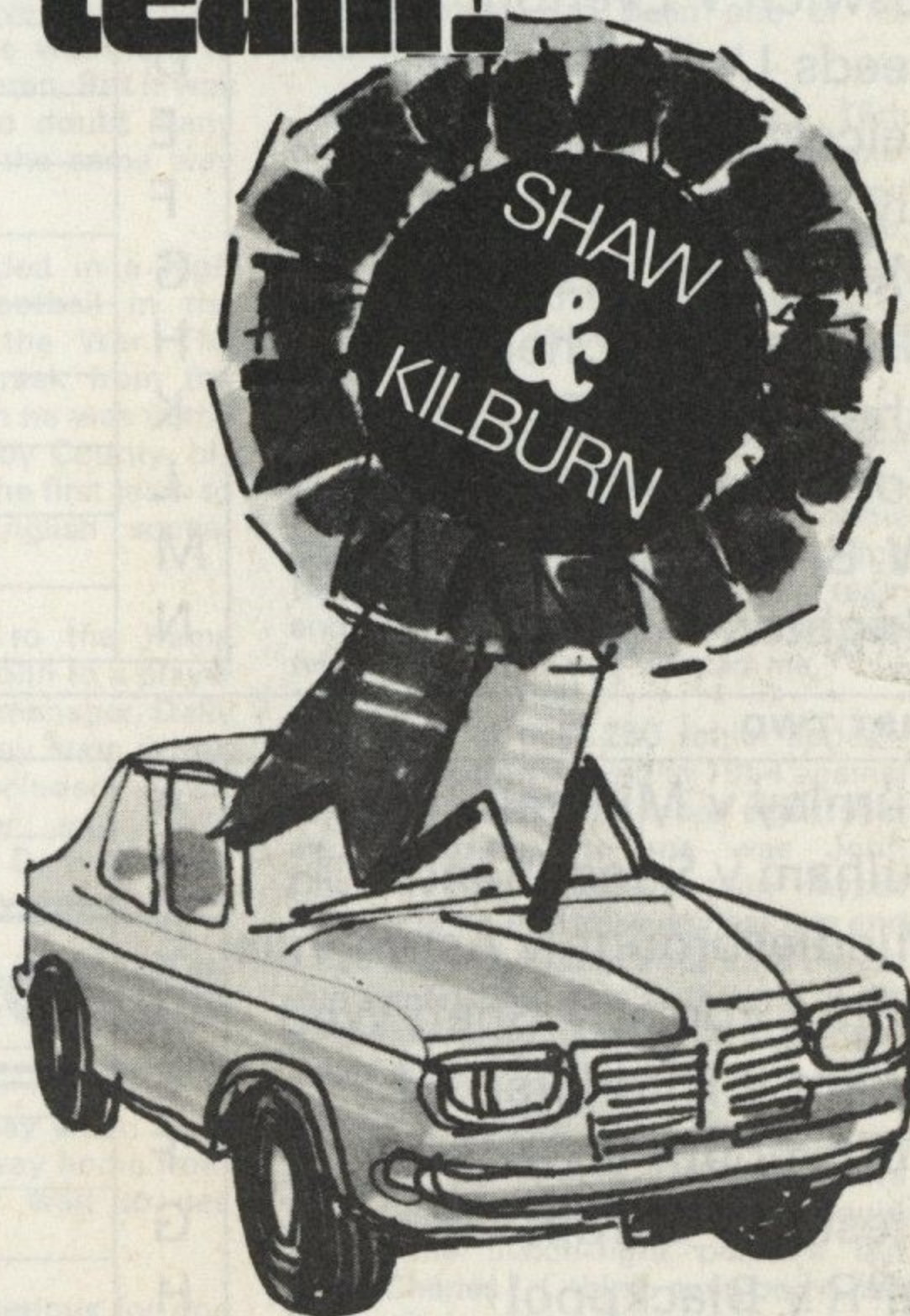
Referee: J. WRENNALL, Chorley, Lancs.

Linesmen: C. A. HALL, Tolworth, (Red Flag)
B. K. ROBINSON, Shepperton, (Orange Flag)

Mascot: Jim Crummey

Ball Donor:
Keith Cheeseman

Support your local team!



Support your local team . . .

No need to travel any further than the Dunstable Road ground of Shaw and Kilburn when you're planning to buy a car. We can show you any new Vauxhall—Viva, Transcontinental Victor, Firenza, VX4/90, Ventora. And we've got a full display of used cars, covering every make.

What's more, we support you right here in Luton with very comprehensive service facilities. Come in and see us soon—we're open seven days a week.

Shaw and Kilburn
The Vauxhall People
Dunstable Road, Luton
Telephone: Luton 51341

