

SKY BLUE



The Official
Magazine of
Coventry City
F.C. Ltd.

10p



Tuesday,
September 24th,
1974

Kick-off
7.30 pm

First Division

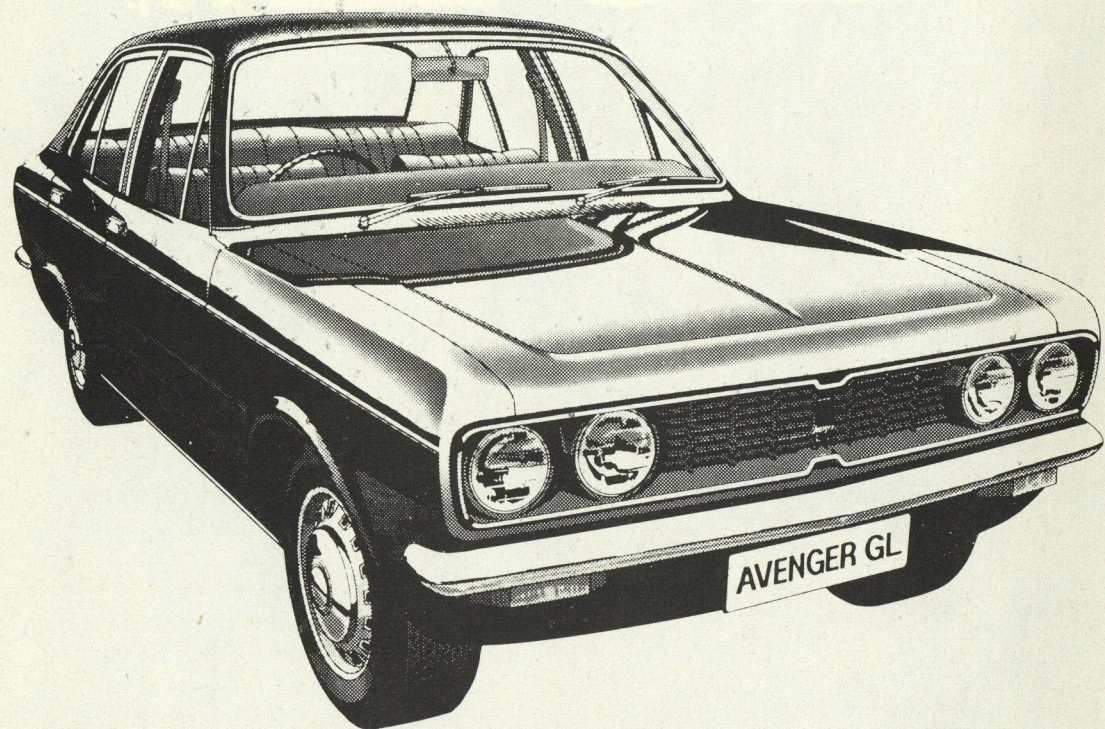
**SKY
BLUES**

v

**LUTON
TOWN**

Our Avengers.

They give you economy,
room, performance and
handling the way no
other car can.



Find out how at your Chrysler dealer.

HILLMAN  **CHRYSLER**
UNITED KINGDOM

The **JOE MERCER** column



Patron
The Rt. Rev. C. K. N. Bardsley,
C.B.E., M.A. Lord Bishop
of Coventry

President
Derrick H. Robins

Chairman
Peter D. H. Robins

Vice-Chairman
J. R. Mead, J.P., F.C.A.

Directors
M. F. French, F.C.A.
T. Sergeant, F.R.C.S.
Sir Jack Scamp, K.B., D.L., J.P.

Iain Jamieson
General Manager
Joe Mercer

Team Manager
Gordon Milne

General Secretary
Eddie Plumley

Assistant Manager
Bob Dennison

Medical Officers
Dr. Tom Baird, M.B., Ch.B.
Dr John Keenan, M.B., Ch.B.

Commercial Manager
George Curtis

Magazine Editor
Michael Beale

SKY BLUE THE OFFICIAL
MAGAZINE OF THE
COVENTRY CITY FOOTBALL
CLUB LIMITED
Edited and published by
Coventry City Football Club,
Highfield Road, Coventry,
Warwickshire.
Tel: Coventry 57171

Printed by:
WW Web Offset, Swan Close,
Banbury, Oxon. Tel: 0295 4381

TONIGHT it's a warm
welcome to Luton Town
and to their manager Harry
Haslam, who is an old
friend of mine.

Obviously, Luton are
taking their time to settle
into the First Division
again. And who doesn't?
It's a fantastic step for any
club to take.

One thing that has
always struck me when I
have watched Luton,
particularly at their
Kenilworth Road ground, is
the tremendous atmosphere
they have there. This, of
course, is generated by the
people they have around
the place — particularly
Harry Haslam.

They don't call him
"Happy Harry" for nothing.
What a character and great
guy he is. I remember him
from his early days with
Barry Dock in Wales. He
never stops working and
grafting and he has always
been in love with the
game.

In short, guys like Harry
Haslam deserve all the
success they get and I am
delighted to offer him my
handshake tonight and
welcome him to Highfield
Road.

As far as I remember,
Luton have always been a
difficult side to beat. I
recall playing against them
in the Cup back in 1952
when Sid Owen was their
centre-half.

What Harry and Sid, who
has been on the coaching
staff at Leeds for some
years, will be only too
quick to endorse is the fact
that soccer management is
one of the toughest jobs.

And don't we know it
Coventry. After our poor
start we have now got to
play like champions and
tuck a couple of wins under
our belts. In short, we need
a king-size injection of
confidence that only a
couple of wins strung
together could give us.

We can play like
champions. We know that.
We have got to think how
well we can play and
recapture some of that
form that gave us all so
much satisfaction last
season.



CUP VOUCHER

1974-75

Match No. 6



HAPPY HATTERS



BACK (left to right): Maitland Pollock, Peter Anderson, John Ryan, Paul Futcher, Paul Price, Jimmy Husband. MIDDLE: Bobby Thomson, John Faulkner, Keith Barber, Graham Horn, Barry Butlin, Alan Garner, Steve Litt. FRONT: Reg Game (physiotherapist), Brian Chambers, Alan West, Harry Haslam (manager), Gordon Hindson, Jimmy Ryan, Roy McCrohan (chief coach).

Home & Away

From what was once a local building firm, W. A. Blackburn Limited have rapidly grown into a national group of development companies. With industrial and commercial sites being developed as far west as Telford, as far east as Great Yarmouth and as far south as Swanage, the company's projects now span the length and breadth of England. And it can only be a matter of time before every area, in which this team plays, will have near it a planned Blackburn office development or industrial estate, that you can visit after the match.

Just write for a list.

W. A. Blackburn Limited

Blackburn House, 1 Warwick Street, Leamington Spa
Telephone: Leamington Spa 34517

CHATTER BOX



LUTON TOWN'S post-war history embodies the story-book elements of joy and pathos in that it portrays a climb up and down the stepladder of football fortune, exciting and sad in turn, then a brave effort to get back to the top.

The Hatters' fans were thrilled in 1955 when, after 11 Second Division seasons, the club edged into second place after a nerve-racking promotion race with five rivals. Goal average settled the championship in favour of Birmingham and it also decided which club went up with them. Luton's 88 goals to 53 pushed Rotherham United (94-64) into third place, both finishing with 54 points, and next came a disappointed Leeds with 53.

Four years later, Luton Town surprised even their supporters by vanquishing Leeds, Leicester, Ipswich, Blackpool and Norwich to reach the FA Cup Final. Exultation turned to dismay when Nottingham Forest, despite the calamity of being reduced by a serious injury to ten men, won the trophy 2-1.

For Luton the sequel was a tragedy of a good team becoming too heavy with years: experience aged . . . and 12 months after appearing at Wembley the team were back in Division Two. Three more seasons and Luton dropped into Division Three. They stayed two years, then grimly tackled the long haul back from Division Four.

Success was achieved in season 1967-68 at the third attempt and with no argument about it: Luton scored the most goals (87), had fewer against them (44) than the other 23 clubs and equalled Peterborough's record 66 points for this Division.

The club's long association with the Southern League before their 1920 attainment of Football League status

made even older people forget that Luton were elected to the Second Division when it was only five years old, taking the place of Bolton Wanderers in 1897.

The turn of the century spelt their exit in favour of Blackpool. In modern times, Luton have been a League club for another 41 seasons and sampled the ups and downs of all four DIVISIONS.

Formed in 1885 by the fusion of the local Wanderers and Excelsior, Luton became the first Southern club to pay wages. However, the salary scale seemed hardly worth forfeiting amateur status for: 5/- (25p) and this to only the three best players. That was in 1890. When the season ended, it was decided to pay every player 2/6d (12½p) plus 6d (2½p) for away games and an allowance for working time lost. The wages were doubled and further increased as Luton's funds and prestige grew.

On losing League status, the club returned to the Southern League and had a spell of two seasons in its Second Division.

In those days the team's attire was very colourful. The players first wore navy blue and pink halved shirts with caps to match — an edict being that caps must be worn on the field. Soon, the caps were cast aside, and the colours were changed to "cochineal" for Luton's entry into League football.

Still not satisfied, Luton greeted the new century with sky blue shirts and white shorts, which were again changed in 1920 to white shirts and black shorts. In the 1973-74 Season, Luton adopted their new colours of orange shirts with navy and white vertical stripe down the left - hand - side, navy shorts and orange socks.

Luton gained promotion to the Second Division in the 1969-70 season when they were runners-up to Orient, and stayed there until their promotion to the First Division, as runners-up to Middlesbrough, last season.

Have YOU won the ball...?

EYES DOWN, LOOK IN . . . YOU may have won the ball used in today's game, autographed by both teams! In a copy of today's match-day magazine there will be a special stamp . . . a stamp that will entitle the lucky magazine holder to receive the match-ball. If you are the lucky spectator, bring your programme along to Commercial Manager George Curtis and he will do the rest.

● This will be a regular feature at all Sky Blue home games this season. So don't miss out . . . make sure of your copy of the match-day magazine at EVERY game.



SKY BLUE OPPONENTS

Your who's who guide to LUTON TOWN

KEITH BARBER (goalkeeper): Born in Vauxhall, London, Keith played most of last season in the Combination side. Signed by manager Haslam from London senior football, Keith now has a wealth of first-team experience, having made over 80 appearances since signing. One of the "characters" of the squad with a terrific sense of humour, Keith's great ambition is to re-establish himself as first-team 'keeper. Has a great friendly rivalry with the other senior 'keeper, Graham Horn.

GRAHAM HORN (goalkeeper): Established himself as first-team 'keeper during the promotion season. Former England Youth international, signed from Arsenal for a £25,000 fee. At 19 years of age, one of the youngest 'keepers to play in the First Division. Height: 6ft 1½in. Weight: 14 stones. Forty-four League and Cup appearances last season. Hobby: Golf.

JOHN RYAN (right-back): Former Arsenal and Fulham player with a wealth of experience. Established himself as first-team full back midway through last season with some impressive performances. Kent born, John is one of the quickest defenders in League football and is renowned for his overlapping runs on the right flank. Thirty-four League and Cup appearances last season. John is a water-skiing enthusiast of international standard.

BOBBY THOMSON (left-back, club captain): Must be the greatest "free transfer" capture of all time, when joining Luton from Birmingham City. Capped frequently at full-back for England, Bobby has proved to be one of the greatest skippers to wear the "Hatters" shirt. Ever-present last year, his approach to the game both on and off the field was an inspiration to his colleagues during their promotion season.

DON SHANKS (right-back): Signed from Fulham, former Youth international, equally at home in midfield. Londoner by birth, Don spent the summer months playing and coaching in Australia. Has a great love of coaching youngsters and helps with a boy's team in London in his spare time. A fine prospect.

PAUL PRICE (left-back): One of the "babes" of the squad. Born locally at St Albans, Paul is establishing himself as a fine young defender. Finished last season with a broken leg from which he has made a good recovery.

PETER ANDERSON (midfield): Signed for Luton when an amateur with Hendon. Established himself as a prolific goalscoring midfield player last season and deservedly voted by the supporters as "Player of the Year". Peter was virtually an ever-present last season, missing one game through injury, and wore the No. 9 shirt on five occasions when Barry Butlin was injured. Loves to attack and his goal tally of 14 last season made him one of the leading midfield goalscorers in League football. Single, is a qualified chartered accountant.

JOHN FAULKNER (centre-half): Signed from Leeds United for only £6,000, John first hit the headlines when playing in the epic Cup match for Sutton United against Leeds. Plagued by a serious knee injury at Leeds, John, now completely recovered, is realising his full potential and missed only two matches last season. Tipped by many as a future International prospect.

ALAN GARNER (midfield): Another great "free transfer" signing, Alan joined the Hatters from Millwall and has established himself as a cool, reliable player. Ever-present last season. Always composed, must have a fine career ahead.

PAUL FUTCHER (defender): Chester-born Paul was one of the Town's

close-season signings along with his identical twin brother, Ronald. Six feet tall, and with great ability, he is part of manager Haslam's "insurance" philosophy for the future. Joining Chester from school, 17-year-old Paul is regarded as one of football's stars in the making. Luton secured his signature despite opposition from many First Division clubs and is tipped by many good judges for early representative honours. First season as a professional.

BRIAN CHAMBERS (midfield): Close-season signing from Arsenal. Newcastle-born Brian looks forward to establishing himself with the Hatter's first-team squad. Fine positional player who could have a great future ahead of him.

MAITLAND POLLOCK (midfield): One of the few Scots on the club's books, Maitland was signed at the end of last season from Southern League Burton Albion for a small fee. Has enormous enthusiasm for the game and has quickly become a favourite at Kenilworth Road. Could be a very serious contender for first-team honours.

JIMMY RYAN (forward): One of several Scots in the club, Jimmy joined Luton from Manchester United four years ago for a fee of £20,000. Great ball player, Jimmy only missed three matches during the Hatter's promotion year. Scorer of ten League and Cup goals last season, a tenacious player who will trouble the best defenders.

JIMMY HUSBAND (forward): Well known for his feats with Everton, Jimmy joined the Hatters midway through the last season against opposition from many leading clubs. Scorer of ten goals including two hat-tricks last season, Jimmy has settled down as one of the great strikers in the League and is now playing better than at any time of his career. Former international, could re-establish himself at international level again this season.

SMILING TEAM BOSS HARRY HASLAM

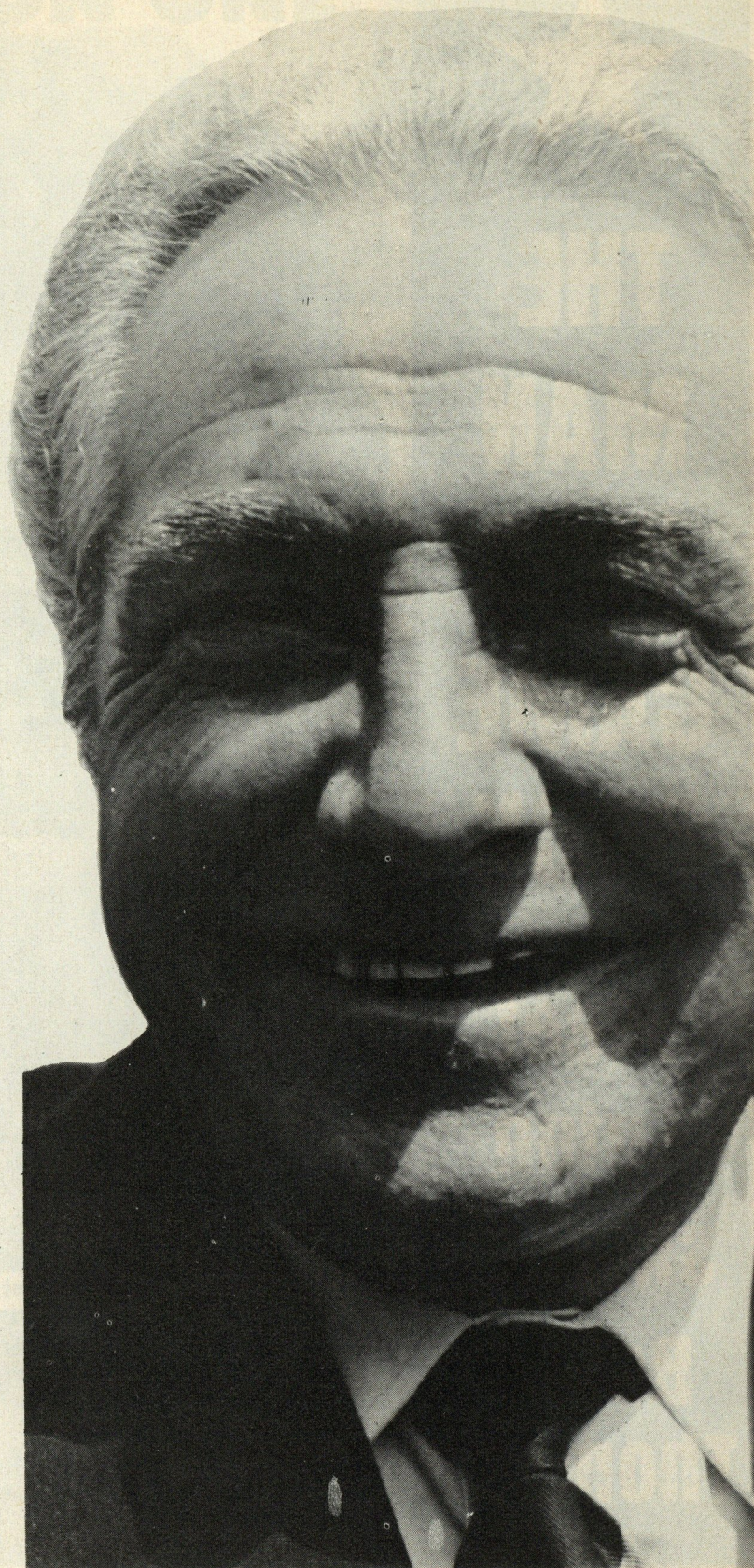
Born: Newcastle-upon-Tyne. Married with one son, Jamie.

BARRY BUTLIN (forward): Last season's leading goalscorer with 18 goals, despite missing several matches with a fractured jaw. Barry was Luton's costliest signing when joining the club two years ago from Derby County, and soon settled down as a prolific goal scorer. Acknowledged as one of the finest headers of a ball in the Football League, Barry was born at Rosliston in North Staffordshire. Married with two daughters.

ALAN WEST (forward): Must be one of manager Harry Haslam's greatest signings when he joined the Town from Burnley. Under-23 international, Alan is one of the great crowd favourites at Kenilworth Road and became an ever present after joining the club in October. Fine ball player, Alan's ambition is for a full international cap and many good judges say it cannot be too far away. Recently married, Alan was born in Hyde, Cheshire.

JOHN ASTON (forward): Now in his second season with the Town, John is remembered by everyone in football for his great games for Manchester United, particularly in the European Cup. One of the few orthodox wingmen left in top football, John missed only four matches last season, scoring eight goals. Member of a fine footballing family, John was born at Ashton-under-Lyme.

GORDON HINDSON (forward): Signed from Newcastle in 1971, "Geordie" has now established himself into the first-team squad. Although mainly wearing the No. 12 shirt last season, his enthusiasm and ability were an asset to the team whenever he was called on. Fast, attacking player with a fine shot, he is equally at home as a forward or midfield player.





THE MAN WHO CAME BACK

Meet Luton skipper Bobby Thomson



VIEWS ON ONE



BIRMINGHAM City may be in the relegation zone once again, but no team is generating more excitement in their home games. Their thrilling 3-2 win over **Derby** last week following on the 4-3 defeat by **Leicester** in a match of fluctuating fortunes.

Though the injury bogey again struck (they finished with ten men when **HOWARD KENDALL** and **MALCOLM PAGE** were both taken off) **TREVOR FRANCIS** became the second player in Division I to net two penalties in a match this season (**Liverpool's ALEC LINDSAY** was the first when he did so against Leicester last month) and Blues hung on to win 3-2 and maintain their excellent home record against County, who have not won on any of their last ten visits to St Andrews — their last win there being a 1-0 success in 1948-9.

● Another "horses for courses" result was at Stamford Bridge where Arsenal followed up three successive wins by forcing a goalless draw, while at the Victoria Ground Stoke continued to exact full revenge for the 3-0 home defeat the Sky Blues inflicted on them in 1968-9 by winning for the sixth successive season.

● Another club struggling at the moment is West Ham United, though full-back **FRANK LAMPARD** did at least notch their first away goal this season in the 2-1 defeat at Spurs. In a topsy-turvy scoring chart Hammers' six goals to date have been shared by defenders Frank Lampard (2) and **JOHN McDOWELL**, midfielder **BILLY BONDS** (2) and new boy **BILL JENNINGS** from Watford, the only striker to find the net so far.

● Two goals by **FRANK WORTHINGTON**, to bring his season's tally to six, paved the way for Leicester's 3-1 win over QPR who, since their 3-2 win at Filbert Street in a Division II game in

1948-9, have now played eight games there without further success.

● Burnley took advantage of the present instability at **Leeds** to beat the League Champions at Turf Moor for the first time in their last four attempts — since 1968-9 in fact with **LEIGHTON JAMES** scoring for the third successive home game and **PAUL FLETCHER** getting the winner after **PETER LORIMER** with his second goal in four days (he got a last-minute equaliser in the League Cup tie at Huddersfield) had opened the scoring.

It may be significant that in all their five away matches this season, Leeds have been either winning or on level terms at half-time, but on three occasions they have ultimately been defeated.

W-I-N-N-E-R-S!

□ WINNERS, winners all the way with the super Sky Blues!

Two more lucky winners from our season-ticket holders ballot — and they will both be receiving a dinner for two at the **REGENT HOTEL**, Leamington Spa.

So it's congratulations to:

● **MR C. WILSON**, Avonside House, 3 High Street, Warwick;

● **MR R. TOOTAL**, 48 Rochester Road, Coventry.

Their names were drawn "out of the hat" at our recent games against Manchester City and Ipswich Town respectively.

Latest winners in our M & B "Sky Blue Men Of The Midlands" crossword competition — and each will receive an autographed football — are:

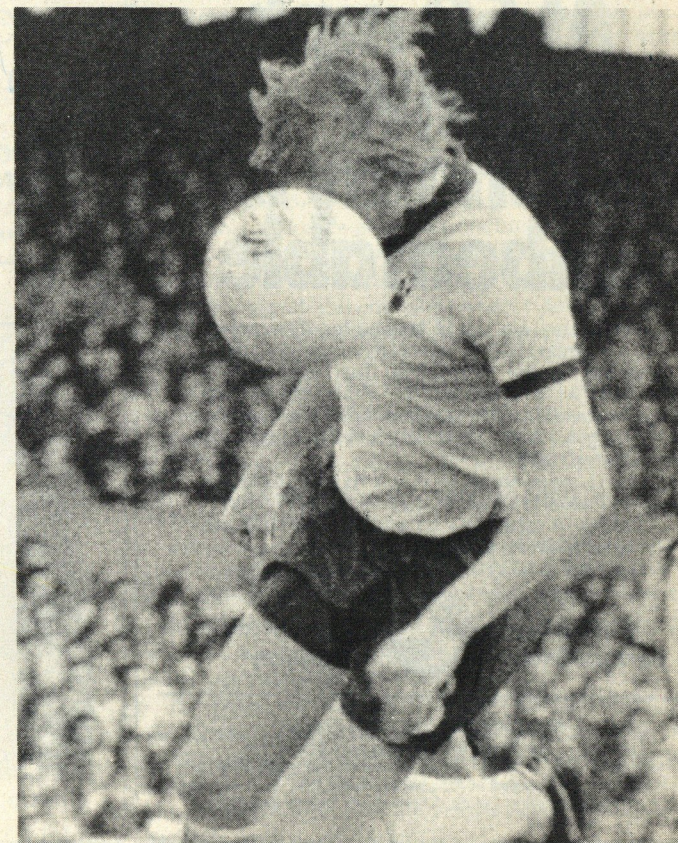
● v Manchester City: **MR A. J. ALLSOPP**, 59 Beake Avenue, Radford, Coventry.

● v Ipswich Town: **MISS KIMBERLEY BABINGTON**, 2 Pandora Road, Coventry CV2 2FW.

This evening's Crossword is on Page 14 . . . and then turn to Page 16 for even more Sky Blue winners!



□ HOW close can you get? That's the question striker Brian Alderson asked himself after our League game at Stoke ten days ago. Because Brian was always in the thick of things in the Stoke penalty area — and as you can see from these pictures he was right out of luck. Above you can see two of his power drives that were just off target, while on the right he gets a real close look at the ball. In the other picture on the left, Graham Oakey is also out of luck with this pot-shot.



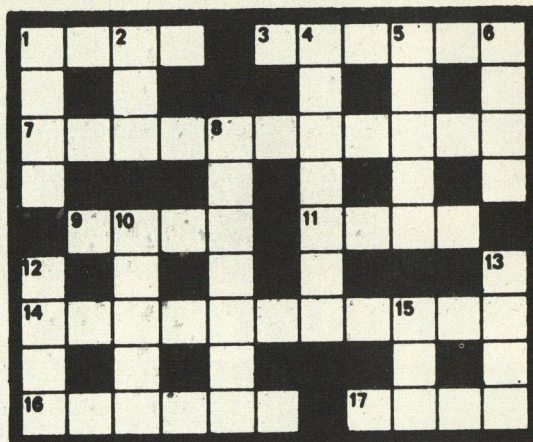
M&B is BEST

A test of skill for the SKY BLUE MEN of the MIDLANDS

Answer the crossword, complete the entry form and send it to "Crossword", Coventry City FC., Highfield Road, Coventry.

The sender of the first correct solution to be opened will receive an autographed football.

Compiled by David Peck



ACROSS

- 1 Blockley or Bourne (4)
- 3 Promotion-winning manager last season (6)
- 7 Home of early season Division One pacemakers (7, 4)
- 9 Don --- (Hearts & Scotland) (4)
- 11 Spark or Smith (4)
- 14 Representative matches between countries but not nationalities (5-6)
- 16 Behind (6)
- 17 Birmingham back (4)

DOWN

- 1 --- Heynckes (Borussia M. & W. Germany) (4)
- 2 Tree in Motherwell's Park (3)
- 4 Colombian club who acquired Neil Franklin from Stoke in 1950 (5, 2)
- 5 Colombian courts "wanted" this England player in 1970 (5)
- 6 Plays the ball with 13 down (4)
- 8 See 12 down
- 10 He made the summer switch from Bradford to Blackburn (5)
- 12 & 8 down Middlesbrough midfielder (4, 7)
- 13 His managementships include Swindon, Bury and Crystal Palace (4)
- 15 Shrewsbury ground: --- Meadow (3)

Name

Full address

Copyright Margana

At 50 mph BMW economy is unbeatable

BMW cars are world famous for their power and performance. Only now is it necessary to draw attention to the astonishing fuel economy of BMW's. At a consistent 50 m.p.h. BMW cars under standard DIN test methods* are reaching 41 m p g for 2002 tii's to 35.03 m p g for the big 6 cylinder 3.0CSI.

If you were about to buy a new or used car when the fuel crisis came, then think BMW now.

Call in or telephone us and we'll arrange an immediate test drive.

*DIN standard test method as published in manufacturer's model handbook.

Unbeatable
performance



Unbelievable
economy

BLACK & WHITE GARAGES

The Black & White Garages Group
Harvington, Nr. Evesham, Worcestershire Tel: 0386-71 612
Also at Kingsditch Lane,
Kingsditch Trading Estate, Cheltenham Tel: 0242 37202.

A CARPET SERVICE AT YOUR FINGER TIPS

400 ROLLS OF BROADLOOM IN STOCK
AND READY FOR DELIVERY IN
48 HOURS

COVENTRY CARPETS

SHOWROOMS:

FORUM BUILDINGS
WALSGRAVE ROAD
Tel. Coventry 457814

91 BROWNSHILL GREEN
ROAD.
Tel. Keresley 3148

KING ST, BEDWORTH
Tel. 311755

Head Office, Warehouse and Contract Department
10 BAYTON WAY, EXHALL
Tel: Coventry 315666

SKY BLUE EUROPEAN NOTEBOOK

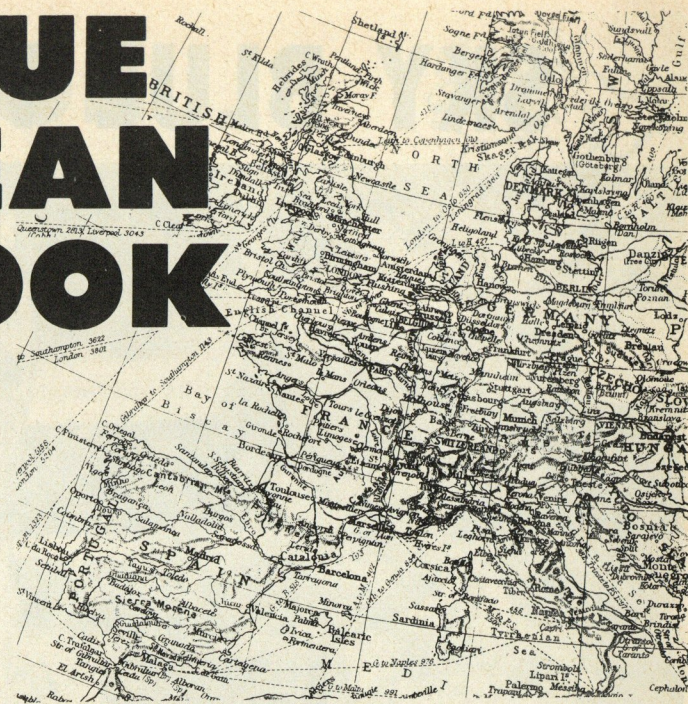
by JACK ROLLIN

THE countries who finished in the top three in the World Cup have enjoyed mixed fortune in recent internationals. Cup winners **West Germany** struggled to beat **Switzerland** 2-1 in Basle, third placed **Poland** scraped through similarly in a European Championship match with **Finland** in Helsinki, but runners-up **Holland** gave an impressive display of power and precision in Stockholm beating **Sweden** 5-1.

Germany without **PAUL BREITNER**, now transferred to **Real Madrid**, and both **GERD MULLER** and **WOLFGANG OVERATH**, who have retired from international football, were little more than workmanlike against a team which had scored only five goals in their previous ten internationals.

And Poland, whose reputation grew after they eliminated **England** from the World Cup qualifying competition, are continuing their policy of playing as many internationals as possible, but clearly not now without cost. After beating the Finns, they staged two home friendlies and in the space of a few short days lost to **East Germany** 3-1 and **France** 2-0.

But troubles have been piling up for the Poles and the



pressure is really on their players whose League championship was interrupted to accommodate the World Cup finals. On the resumption the three outstanding fixtures per club were played off, followed by the Cup Final and straight into the 1974-75 season the week after.

The Dutch, who failed to score only once in the World Cup against Sweden, made up for their disappointment of last summer by trouncing the Swedes on their own soil. Both Spanish-based exiles **JOHAN CRUYFF** and **JOHAN NEESKENS** were released by **Barcelona** — not surprisingly of course as their manager is **RINUS MICHELS**, the Dutch national team boss. They contributed to a vintage performance of penetrating, attacking football.

Neighbours **Belgium**, who were unbeaten in the World Cup qualifying competition did not concede a goal in their six matches and twice prevented the Dutch from scoring against them, beat **Iceland** 2-0 in their opening European Championship match.

But the second goal only came when substitute **JACQUES TEUGELS** went on in Reykjavik three minutes from the end. He was fouled almost immediately so enabling **WILFRED VAN MOER** to score his second goal of the game, this time from the penalty spot.

Both **Northern Ireland** and **Wales** began well enough in their Championship games in Oslo and Vienna respectively. Each opened the scoring, but ended up losing two second half goals apiece.

Ireland were smartly away with a goal in five minutes from Sunderland's famously named **TOM FINNEY**, but surrendered eventually to a brace of goals from Norway's star striker **TOM LUND**, who was sought by Ajax last season. It was their first international success since August 1973 when they beat Iceland 4-0.

Thirty-two year old **ARFON GRIFFITHS** from Wrexham, gave Wales a 35th minute lead against the Austrians, who were without seven leading players, but goals by Feyenoord centre forward **WILLY KREUZ** and Rapid Vienna's wonder boy **HANS KRANKL** after the interval ended the hopes of debutant manager **MIKE SMITH**.



● **DONATO NARDIELLO** . . . a triple qualification for international status. Full story P17.

SKY BLUE WINNERS



ANOTHER handsome pay-out on the Sky Blue Pool . . . and a cheque just as handsome to go with it!

Harold Shepherdson, assistant manager of Middlesbrough and former trainer to the England team, came out to "do the honours" here at Highfield Road recently . . . and his first assignment was to present a cheque to MRS V. CLEMENTS, of Rugby Road, Cubbington, near Leamington. A cool £1,353. Very nice, too.

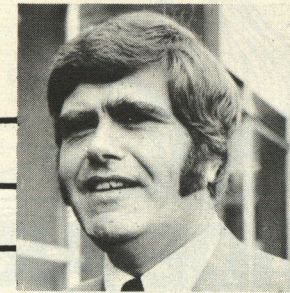
And her Agent J. HUGHES, of Queen Street, Leamington, was not left out. He received a cheque for £67 (left).

Are you a member of the Sky Blue Pool? Turn to Page 19 and fill in the coupon. Who knows? Maybe you will be featured here among the Sky Blue winners.

SKY BLUE JUNIORS



by
MIKE
DALE



● **DONATO NARDIELLO** is a lad whose football future will be followed as closely in Italy and Wales as it is by the Coventry public. For 17-year-old Don has a triple qualification if he is ever fortunate enough to reach international standard.

He was born in Wales of Italian parentage and has been recommended by the Sky Blues for England Youth trials. Currently he is striving hard to make a name for himself in our Central League side and he scored recently against Preston Reserves and **NOBBY STILES**.

Like that other product of Wales, **LES CARTWRIGHT**, Don has not neglected his educational qualifications. He has several 'O' levels and is now studying at night school.

● In a period when physiotherapist **NORMAN PILGRIM** has been among the busier members of the Training Camp staff, **ALAN GREEN** has been among the more depressed casualties on sick parade.

Alan has been itching to get back in action after a hamstring injury in his right leg, but after only 45 minutes in the "A" team he suffered a similar injury in the other leg.

Said the bearded little striker: "The first injury took two weeks to heal. Now this one will take three weeks."

● **DAVID PHILPOTTS** will soon qualify for the title "Loan Ranger". Twenty-year-old David, our reserve team back-four man, is currently on his second loan to another club.



● **DAVID PHILPOTTS**

David has joined Tranmere Rovers and who better to learn the centre-half ropes from than **RON YEATS**, the former Liverpool centre-half who is now Rovers' manager? David has temporarily moved back to his home in Cheshire during the period of the loan.

Last season he had a spell on loan to Southport where he gained valuable first team experience.

● **JIM WILSON**, our young Scottish striker is nursing and cursing a broken collar bone, for it cost him the opportunity of taking part in the Scottish FA's trial for youngsters who are with English clubs.

The Anglo-Scots trial was in Glasgow during last week and Jimmy's two "A" team colleagues, outside-left **NORRIE BROWN** and right-back **IAN LOOSE** were among the lucky ones to take part.

Jimmy would have been with them but for the fracture he received playing against Stoke.

HALLIDAY TRANSPORT ORGANISATION LIMITED



**138 RAILWAY TERRACE RUGBY
WARWICKSHIRE CV21 3HN Phone RUGBY 73626**



**R. C. HALLIDAY
(TRANSPORT) LIMITED**

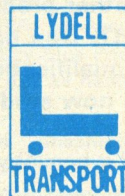
959 Foleshill Road,
Coventry,
Warwickshire CV6 5HN
Phone: 0203-84224
Telex: 311289

1, 2, 3, Salisbury Buildings,
201 Trafford Road,
Salford,
Lancashire, M5 3DE,
Phone: 061-872 5351.



**R. C. HALLIDAY
(STORAGE) LIMITED**

138 Railway Terrace,
Rugby,
Warwickshire, CV21 3HN
Phone: Rugby 73626



**LYDELL
TRANSPORT LIMITED**

12 Birmingham Road,
Oldbury,
Warley,
Worcestershire
Pone: 021-552 5555
Telex: 336659

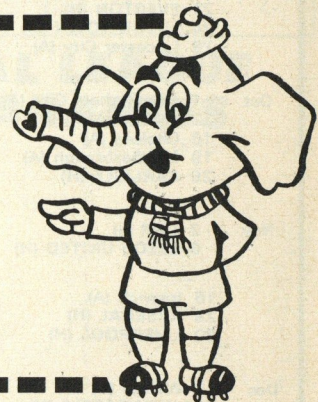
2a Highfield Road,
Dartford,
Kent
Phone 0322-28685
Telex 896678

SKY BLUE HALF-TIMES SCOREBOARD

A	Arsenal v Newcastle United	N	Portsmouth v Oldham
B	Carlisle United v Manchester City	P	Sunderland v Norwich City
C	Ipswich Town v Stoke City	Q	Bury v Colchester United
D	Leeds United v Tottenham Hotspur	R	Charlton Athletic v Brighton
E	Liverpool v Burnley	S	Crystal Palace v Preston N.E.
F	Middlesbrough v Leicester City	T	Plymouth Argyle v Hereford United
G	Q.P. Rangers v Everton	U	Walsall v Swindon Town
H	Wolves v Sheffield United	V	Cambridge United v Mansfield Town
J	Blackpool v Cardiff City	W	Newport County v Workington
K	Bristol City v York City	X	Northampton Town v Doncaster Rovers
L	Hull City v Millwall	Y	Rotherham United v Bradford City
M	Notts County v Orient	Z	Scunthorpe United v Torquay United

MEET TONIGHT'S REFEREE

TED JOLLY (Manchester) started refereeing in the Middleton Youth League and made his way on to the League list via the Manchester and Lancashire Leagues. He was a linesman for the 1972 League Cup Final (Chelsea v Stoke City) and has refereed in Italy. Married with two children, Ted works as an insurance agent and is a referee instructor for the Manchester County FA.



EVERY HOME SHOULD HAVE AT LEAST ONE!

YES — Every home should have at least one chance of winning the attractive prize money on the exciting Sky Blue Pool. To achieve our aim more agents are required who could enrol a minimum of ten members into the Midlands' most successful Football Club Pool. If you enjoy making friends and money it could be well worth while dropping us a line and finding out more about the benefits you would receive as a Sky Blue Agent.

I WISH TO BECOME A MEMBER:

I WISH TO BECOME AN AGENT:

NAME

NAME

ADDRESS

ADDRESS

Tel No.

Tel. No.

**SKY BLUE POOLS LIMITED
THACKHALL STREET, COVENTRY, CV2 4FY. TEL 56231 (3 lines)**

SKY BLUE DIARY



DIVISION I

Date	Opponents	Result	Attendance	Scorers
Aug 17	Newcastle (A)	2-3	35,938	Alderson, Hutchison
21	Derby Co. (A)	1-1	25,717	Mortimer
24	CHELSEA (H)	1-3	21,251	Cross
27	DERBY CO. (H)	1-1	18,586	Carr
31	Burnley (A)	0-3	14,619	
Sept 7	MAN CITY (H)	2-2	15,440	Alderson, Stein
	(LCrd 2)			
10	IPSWICH TOWN (H)	1-2	12,944	Stein
14	Stoke City (A)	0-2	22,842	
21	EVERTON (H)			
24	LUTON TOWN (H)			
28	Leicester City (A)			
Oct 5	Birmingham City (A)			
12	WEST HAM (H)			
16	Chelsea (A)			
19	Middlesbrough (A)			
26	CARLISLE (H)			
Nov 2	QPR (a)			
9	LEEDS UNITED (H)			
16	Ipswich (A)			
23	ARSENAL (H)			
30	LIVERPOOL (H)			
Dec 7	Wolves (A)			
14	NEWCASTLE (H)			
20	Sheff. Utd (A)			
26	STOKE (H)			
28	Tottenham (a)			
Jan 4	FAC 3			
11	WOLVES (H)			
18	Liverpool (A)			
25	FAC 4			
Feb 1	Leeds Utd (A)			
8	QPR (H)			
15	Arsenal (A)			
22	IPSWICH (H)			
Mar 1	BURNLEY (H)			
8	Luton (A)			
15	LEICESTER (H)			
22	Man City (A)			
28	SHEFF UTD (H)			
31	Everton (A)			
Apr 1	TOTTENHAM (H)			
5	Carlisle (A)			
12	BIRMINGHAM (H)			
18	West Ham (A)			
26	MIDDLESBROUGH (H)			
May 3	FAC Final			

CENTRAL LEAGUE

Date	Opponents	Result	Scorers
Aug 17	BURNLEY (H)	3-1	Green, O'Brien, Robinson
20	EVERTON (H)	2-1	Ferguson, O'Brien
24	Stoke (A)	1-5	Cartwright
31	PRESTON (H)	3-1	Robinson (2), Nardiello
Sept 4	Derby (A)	1-1	Robinson
7	Sheff Utd (A)	Postponed	
14	NOTTM F (H)	1-4	Potter
17	DERBY (H)	Postponed	
21	Bolton (A)		
24	Nottm F (A)		
28	MAN CITY (H)		
Oct 1	Everton (A)		
5	W. B. ALBION (H)		
12	Blackpool (A)		
19	LIVERPOOL (H)		
26	Sheff Wed (A)		
Nov 2	BLACKBURN (H)		
9	Leeds Utd (A)		
16	MAN UTD (H)		
19	Huddersfield (A)		
23	Bury (A)		
26	HUDDERSFIELD (H)		
30	Aston Villa (A)		
Dec 7	WOLVES (H)		
14	Burnley (A)		
21	NEWCASTLE (H)		
Jan 11	Wolves (A)		
18	ASTON VILLA (H)		
25	STOKE (H)		
Feb 1	LEEDS UTD (H)		
8	Blackburn (A)		
15	BURY (H)		
22	Man Utd (A)		
Mar 1	Preston (A)		
8	SHEFF UTD (H)		
11	Liverpool (A)		
15	Newcastle (A)		
22	BOLTON (H)		
29	Man City (A)		
Apr 5	BLACKPOOL (H)		
12	W. B. Albion (A)		
19	SHEFF WED (H)		

● Records on Radio Sky Blue by D. F. Gibbs Ltd, Foleshill Road, Corporation Street, Walsgrave Road and Balsall Common.

SKY BLUE FACTS

	Division I			Lge Cup			Totals		
	App	Sub	Gls	App	Sub	Gls	App	Sub	Gls
Brian ALDERSON	7	—	2	1	—	—	8	—	2
Wille CARR	4	—	1	1	—	—	5	—	—
Les CARTWRIGHT	—	1	—	—	—	—	—	1	—
Chris CATTLIN	7	—	—	1	—	—	8	—	—
Mick COOP	1	1	—	—	—	—	1	1	—
David CROSS	3	2	1	—	—	—	3	2	1
John CRAVEN	1	—	—	—	1	—	1	1	—
Alan DUGDALE	6	—	—	1	—	—	7	—	—
Bill GLAZIER	2	—	—	1	—	—	3	—	—
Peter HINDLEY	6	—	—	—	—	—	6	—	—
Jim HOLMES	1	3	—	—	—	—	1	3	—
Tommy HUTCHISON	7	—	1	1	—	—	8	—	1
Larry LLOYD	6	—	—	1	—	—	7	—	—
Mick MCGUIRE	5	—	—	1	—	—	6	—	—
Dennis MORTIMER	7	—	1	1	—	—	8	—	—
Graham OAKEY	2	—	—	1	—	—	3	—	—
Neil RAMSBOTTOM	5	—	—	—	—	—	5	—	—
Wilf SMITH	1	—	—	—	—	—	1	—	—
Colin STEIN	6	—	1	1	—	1	7	—	2

HOW THEY STAND

FIRST DIVISION

	HOME					AWAY					Goals	A	Ps
	P	W	D	L	F	P	W	D	L	F			
Ipswich	7	3	0	0	6	0	3	0	1	7	4	12	
Liverpool	7	3	0	0	9	3	2	1	1	5	3	11	
Man City	7	4	0	0	9	1	1	1	4	7	11		
Stoke	7	2	2	0	7	2	2	0	1	4	2		
Sheffield U	7	3	1	0	7	3	1	1	1	4	5		
Everton	7	2	2	0	4	2	1	1	1	4	4		
Wolves	7	1	2	0	5	3	1	2	1	3	4		
Newcastle	7	3	1	0	8	4	0	1	2	5	8		
Carlisle	7	1	0	2	1	3	2	1	1	1	5		
Middlesbrough	7	0	2	1	2	4	2	1	1	5	2		
Burnley	7	2	0	2	7	5	1	1	1	4	5		
Leicester	7	1	2	1	5	4	1	1	1	6	7		
Chelsea	7	0	2	2	3	8	2	1	0	6	3		
Derby Co	7	1	2	0	5	3	0	2	2	3	6		
Birmingham	7	1	1	2	7	10	1	1	1	2	2		
Arsenal	7	1	0	2	4	2	1	1	2	2	5		
QPR	7	0	1	2	1	3	1	2	1	4	5		
Tottenham	7	2	0	2	5	4	0	0	3	2	7		
Leeds	7	1	1	1	2	2	0	1	3	3	8		
Luton	7	0	2	2	3	7	0	2	1	2	4		
COVENTRY	7	0	2	1	4	6	0	1	3	3	9		
West Ham	7	1	0	2	5	5	0	1	3	1	8		

(up to and including September 14)

CENTRAL LEAGUE

	P	W	D	L	F	A	Pts
Aston Villa	8	6	1	1	19	11	13
W. B. Albion	7	4	2	1	13	8	10
Liverpool	7	4	1	2	12	8	9
Derby Co.	6	3	2	1	12	6	8
Nottingham F.	6	3	2	1	14	8	8
Stoke City	6	4	0	2	11	6	8
Everton	6	3	1	2	7	3	7
Bolton W.	6	2	3	1	11	8	7
Manchester C.	6	3	1	2	5	5	7
COVENTRY C.	6	3	1	2	11	13	7
Manchester Un.	6	3	0	3	10	8	6
Newcastle Un.	6	3	0	3	9	8	6
Huddersfield T.	7	3	0	4	9	9	6
Leeds Un.	7	2	2	3	10	11	6
Wolves	7	3	0	4	14	15	6
Burnley	5	2	1	2	8	10	5
Blackpool	7	1	3	3	8	11	5
Preston N.E.	6	2	1	3	11	15	5
Bury	6	2	0	4	7	10	4
Sheffield Wed.	6	2	0	4	5	11	4
Blackburn R.	5	0	1	4	1	10	1
Sheffield Un.	6	0	0	6	5	17	0

CENTRAL LEAGUE APPEARANCES

	App.	Sub.	Gls.
Jim BLYTH	5	—	—
Paul CAHILL	6	—	—
Les CARTWRIGHT	4	—	1
Ian CHRISTIE	2	1	—
John CRAVEN	1	—	—
David CROSS	1	—	—
Mike FERGUSON	2	1	1
Bill GLAZIER	1	—	—
Alan GREEN	2	—	1
Steve GROVES	1	—	—
Jim HOLMES	2	—	—
Max IRWIN	1	1	—
Mick MCGUIRE	2	—	—
Ray MURPHY	1	—	—
Donato NARDIELLO	4	—	1
Graham OAKEY	5	—	—
Tommy O'BRIEN	6	—	2
Steve POTTER	—	1	1
David PHILPOTTS	5	—	—
Brian ROBERTS	5	—	—
Alan ROBINSON	4	1	4
Wilf SMITH	4	—	—
Val THOMAS	1	—	—
Jim WILSON	—	1	—

LEAGUE HOT-SHOTS

Leading League and League Cup scorers: (up to and including September 14):

Division I: Boersma (Liverpool) 6; Worthington (Leicester) 6; Bell (Manchester City) 5; Kidd (Arsenal) 5; Latchford (Everton) 5; Marsh (Manchester City) 5; MacDonald (Newcastle) 5; Francis (Birmingham) 5.

SKY BLUE SERVICE

TRAVEL

TWO tough away assignments coming our way at Leicester City next Saturday, September 28, and at Birmingham City the following week, October 5.

If you are travelling to Leicester by road, leave Coventry by A46 going via Ansty, Sharnford, Narborough to the Leicester Ring Road. Turn right along Upperton Road. Leicester City's ground is on the right.

For Birmingham, straight down the A45 — we are sure you know the way by now!

● If you don't fancy driving yourself, why not take advantage of the Sky Blue Travellers' Club and travel by coach?

Remember, seats for Travellers' Club trips **MUST** be booked in advance from the Pools Office. Details of forthcoming trips are as follows:

LEICESTER CITY (September 28): Depart Pools Office 1pm. Fare: 50p.

BIRMINGHAM CITY (October 5): 1.30pm. 40p.

CHELSEA (October 16): 4pm. £1.35.

MIDDLESBROUGH (October 19): 9am. £1.85.

IPSWICH (November 16): 9am. £1.50.

WOLVES (December 7): 12.30pm. 70p.

SHEFFIELD UNITED (December 20): 4pm. £1.25.

TOTTENHAM (December 28): 10.30am. £1.35.

SHOP

THIS WEEK'S hot line in the Sky Blue Souvenir Shop:

"New range of "SHAKE-ME" items including NIGHT-DRESS CASE, HANDBAG, PURSE, PEN AND PENCIL HOLDER.

"For that BIRTHDAY PRESENT you can obtain VOUCHERS from the Sky Blue Shop, too.

● For a full list of souvenirs available, please write including sae to **Sky Blue Shop, Main Stand, King Richard Street, Coventry.**

POSTAL

DO YOU have friends or relatives living away from Coventry who would still like to keep right up to date with the happenings at their favourite club?

Then the answer is simple . . . why not have the "SKY BLUE" sent to them? A season's subscription to the Coventry City FA match-day magazine is £4.

If you are interested write to "**Programme Subscription, Coventry City FC, Highfield Road, Coventry**" enclosing your cheque or postal order to the correct value.

SKY BLUE PART 4—NUMBER OF PLAYERS (Law 3) TEACH -IN



In the early days of football, under near-jungle law, a form of football would be played in the streets with possibly a hundred or more on each side. By the time a generally acceptable set of rules had been introduced in 1863, it was usual to have 11 per side . . . though the first FA laws made no mention of this. The first set of rules mentioning a goalkeeper, with permission to handle the ball, was published in 1870. But it wasn't until 1909 that goalkeepers had to wear distinctive jerseys. Then it was decided that they must wear only scarlet, royal blue or white.

It was in 1912 that the now favourite colour for goalkeepers in this country — royal green — was introduced. From 1921 it was stipulated that goalkeepers in home international matches must wear yellow. It is possible for a goalkeeper to concede a penalty by handling in the penalty area! If a player changes placed with his goalkeeper *without informing the referee* and then proceeds to handle the ball in the area, a spot kick would be awarded against him.

ACTION GALLERY



**GRAHAM
OAHAY**

SKY BLUES

- 1 NEIL RAMSBOTTOM
 - 2 GRAHAM OAKEY
 - 3 CHRIS CATTLIN
 - 4 DENNIS MORTIMER
 - 5 LARRY LLOYD
 - 6 PETER HINDLEY
 - 7 MICK McGUIRE
 - 8 BRIAN ALDERSON
 - 9 DAVID CROSS
 - 10 WILLIE CARR
 - 11 TOMMY HUTCHISON
- Sub: JIMMY HOLMES

Referee:
E. JOLLY
(Manchester)



Linesmen:
Red Flag:
T. HARDMAN
(Strencham, Worcs)

Orange Flag:
C. W. GARDNER
(Longlevens, Gloucs)

LUTON TOWN

- 1 KEITH BARBER
 - 2 DON SHANKS
 - 3 BOBBY THOMSON
 - 4 PETER ANDERSON
 - 5 JOHN FAULKNER
 - 6 JOHN RYAN
 - 7 GORDON HINDSON
 - 8 JIMMY HUSBAND
 - 9 BARRY BUTLIN
 - 10 ALAN WEST
 - 11 JOHN ASTON
- Sub: JIMMY RYAN

● Tonight's match ball has been kindly donated by GRAPHIC PRESS, 118 Harnall Lane East, Coventry.

From the wonderful team
who brought you
the Stag, Dolomite,
Dolomite Sprint, 2000,
2.5PI, Spitfire and TR6.

The Triumph 2500TC.



Triumph
CARS THAT LIVE UP TO THEIR NAME