

# FOREST

VOLUME 8, NUMBER 9

Official Match-Day Magazine. PRICE 10p

## REVIEW

### Nottingham Forest v. Luton Town

DIVISION TWO.

TUESDAY, 21st OCTOBER, 1975.

KICK-OFF 7.30 p.m.



# INTERNATIONAL FIREWORKS AT THE CITY GROUND

The Evening Post invites you to an evening of  
**INTERNATIONAL FIREWORKS**  
at the City Ground Wednesday 5th November

(Gates open 6 p.m.)

For the first time in Nottingham a display of International Fireworks by the Rev. Ron Lancaster M.A. BBC's director of Firework Fiesta and consultant to the British Firework Industry, who also planned the British entry for the International competition at San Sebastian (1968), Cannes (1969) and Monaco (1970).



BBC's well-known disc jockey, **PETER MURRAY** straight from his "Open House" programme, will comper the non-stop action and will be playing your record requests and dedications.

One hour of continuous FLOODLIT entertainment which promises to be more dazzling than last year — a night when sparks are really going to fly! The City Ground, was chosen for its covered seating, floodlighting from four corners of the ground, its compactness with all entertainment clearly visible, and its ease of accessibility for spectators and good catering facilities. Tickets on sale from the Evening Post Office, Forman Street, Nottingham, and any Branch Office. Bus parties will be organised by our Grantham, Newark and Mansfield Offices — return fare rates available on request from those offices.

Postal applications, together with a stamped addressed envelope to:  
**FIREWORKS, EVENING POST, P.O. BOX 99, FORMAN STREET,  
NOTTINGHAM** Or call at one of the Evening Post Offices  
**TICKETS £1 SEATED. 50p STANDING**

**BOOK EARLY — BOOK NOW!**

# FOREST FOCUS

Is the game becoming less attractive and, if so, what can be done to encourage clubs to become less defensive minded?

Altering the rules of the game may not prove successful and would be a slow process because they have to be agreed by FIFA whilst amending the system of awarding points in the league might not have the desired effect and could lead to some unexpected situations.

However, the latter appears to be the most likely way of achieving the object. Many suggestions have been made with the same objective — trying to get teams to play positively rather than adopt a defensive minded policy.

You know the kind of team selection to which I am referring — an extra defender away, an extra forward at home.

Not that one can blame clubs for this attitude because, under the present system, it is the method most likely to reap the best reward points-wise.

The most difficult part of the game is to get the ball in the net — it is, therefore, easier to stop opponents from doing so than scoring oneself. In cricket, batsmen find it much harder to score runs against a defensive field placing

and it is also easier to stop batsmen scoring than to get them out.

American baseball games never end in a draw because they continue playing until a definite result is achieved. The Russian Football League also do not have drawn games. If their matches are level after 90 minutes penalties are taken to decide the result. I don't know whether this recently introduced scheme has proved a success but I still think the drawn game is part and parcel of sport and with slight reservations I think that our system should be retained.

The "Daily Mail" used to run an entertainments league chart, but I can't recall any manager concerning himself with the rating of his team in this particular "league" table, and why should he? Clubs are not promoted or relegated on entertainment value otherwise we might see "Morecambe and Wise" at full-back for Luton Town, or "Little and Large" the twin strikers for Manchester City, or even "Wilson, Kepple, and Betty" doing a midfield sand dance for the national team of the United Arab Republic (subject to birth qualifications)!

One proposal was to introduce "Goal difference" instead of "Goal average" but I cannot see that this would really affect team tactics as it is quite rightly more important

to hang on to that point in possession at the start of play. Points for goals could turn the game into a farce. Example: team near top plays team near bottom. Both need as many points as possible — Result: Top team 18, Bottom team 17. Both teams got what they wanted — lots of points. If you cheapen the goals you cheapen the game!

Some have suggested bonus points for all goals over three. This is also full of danger. When goals scored mean more than actually winning then the whole fabric of the League will be destroyed.

And so we come back to the point at issue, how do we discourage the ultra-defensive outlook? Easy. Don't award any points for goalless draws! Make it necessary for a team to score a goal before it even begins to qualify for a point!

My suggestion is therefore: Two points for a win and one point each for a score draw, no points for a goalless draw or defeat.

I appreciate that some matches have other things including prestige at stake (local "derbies", for instance) where the fear of losing might still produce the 0-0 score-line, but I think that this simple scheme has a lot of merit. What do you think?  
Ken Smales

## NOTTINGHAM FOREST FOOTBALL CLUB



(Founded 1865)  
CITY GROUND  
NOTTINGHAM  
Tel. 868236  
In. Desk 861121

President: G. N. Watson, J.P.  
Chairman: B. J. Appleby, Q.C. Vice-Chairman: S. M. Dryden, J.P.  
Committee: J. H. Willmer, H. W. Alcock, F.C.A., H. Levey,  
G. E. Macpherson, J.P., G. T. Thorpe, F. Reacher, F. T. C. Pell, F.C.A.  
Manager: Brian Clough Secretary/Treasurer: K. Smales  
Hon. Consultant Surgeon: Mr. J. P. Jackson, F.R.C.S.  
Medical Officer: Dr. M. A. Hutson, M.B., B.Chir., D.Obst., R.C.O.G.  
Deputy Med. Officer: Dr. E. Rice, M.R.C.S., L.R.C.P., D.Obst., R.C.O.G.

Assistant Secretary: P. White. Commercial Manager: J. S. Carter. Coaches: J. Gordon, J. Sheridan, A. Hill.  
Groundsman: M. Davies. Maintenance/Security: Charles B. Ralph

**KEITH BARBER (Goalkeeper).** Signed professional forms for Town in April, 1971 and made his debut three days later against Sheffield Wednesday. Barber has since held the position for spasmodic but long runs and had completed 85 league games by the termination of last season.

**JOHN RYAN (Full-back).** Ryan's first sample of league football was with Fulham in the First Division during the 1967/68 campaign. After appearing in more than 40 games for the "Cottagers" he joined Luton in late '69 and has since been a regular member of the side, completing 250 senior games.

**BOBBY THOMSON (Full-back).** An England international on eight occasions, and Under-23 cap in 15 games, Thomson has played more than 450 league matches in a career that embraces spells with Wolves, Birmingham City, Walsall (on loan), and Luton. Before losing his place to young Steve Buckley last campaign he'd made 94 consecutive appearances for the "Hatters".

**JOHN FAULKNER (Centre-half).** Commenced his career with Charlton Athletic before moving into amateur football where he later "hit the headlines" with Sutton United when they played Leeds United in the F.A. Cup. Shortly afterwards, as a result of these fine performances, he joined the Elland Road club as a professional. Faulkner suffered a broken kneecap injury with Leeds and only had the chance to play in two league games and consequently moved to Luton in 1972.

**PAUL FUTCHER (Defender).** He was only 16 years of age when making his league debut for Chester in March, 1973 but a year later, and after 20 league appearances, he moved to Luton for a £100,000 fee along with his twin brother Ron. He played in 19 First Division matches last term following his transfer, and always wore the No. 6 shirt.

**PETER ANDERSON (Midfield).** A very talented player, Anderson has attracted the attention of many leading clubs since joining Luton from Hendon, an Isthmian League side, in February, 1971. A very useful goalscorer for a midfield player, he's netted 20 goals in the past two seasons during which time he's missed only three games.

# PERSONAL POINTS

## LUTON TOWN

**ANDY KING (Midfield).** A Luton-born youngster, he joined the Kenilworth Road club as an apprentice professional in October, 1972 and was offered full professional status less than two years later. He received his senior team baptism in the final First Division game of last term when coming on as substitute against Manchester City. King began this term in Luton's Second Division side and scored in the first match versus Hull City at home.

**ALAN WEST (Midfield).** He won England Under-23 honours with Burnley but, after just 41 league games, lost his place in their side. Sunderland then agreed to buy him for a near-six-figure fee, but surprisingly declined following a medical examination. Luton had no such doubts and immediately bought this very talented player for a similar fee soon after the '73/74 campaign had begun. West had not missed a game for them since until a recent shoulder injury, and was appointed their captain during last season.

**JIMMY RYAN (Winger).** Ryan began his football career with Manchester United, and made his debut for the Old Trafford club in their halcyon days of the 1965/66 season. By the time he joined Luton in 1970 he'd still only played in 21 league games as a result of competing with the likes of George Best, Bobby Charlton, etc. During his five-year stay at Kenilworth Road Ryan's completed over 150 appearances.

**JOHN ASTON (Winger).** A former England Under-23 international he, like his father, played for Manchester United. Although appearing in approximately 150 matches for the Old Trafford club Aston's finest game in their colours was probably the 1968 European Cup Final when United defeated Benfica 4-1. He never quite recaptured this form after breaking a leg and moved to Kenilworth Road in 1972. Prior to the new season Aston had scored 20 league goals for the "Hatters" in 107 matches.

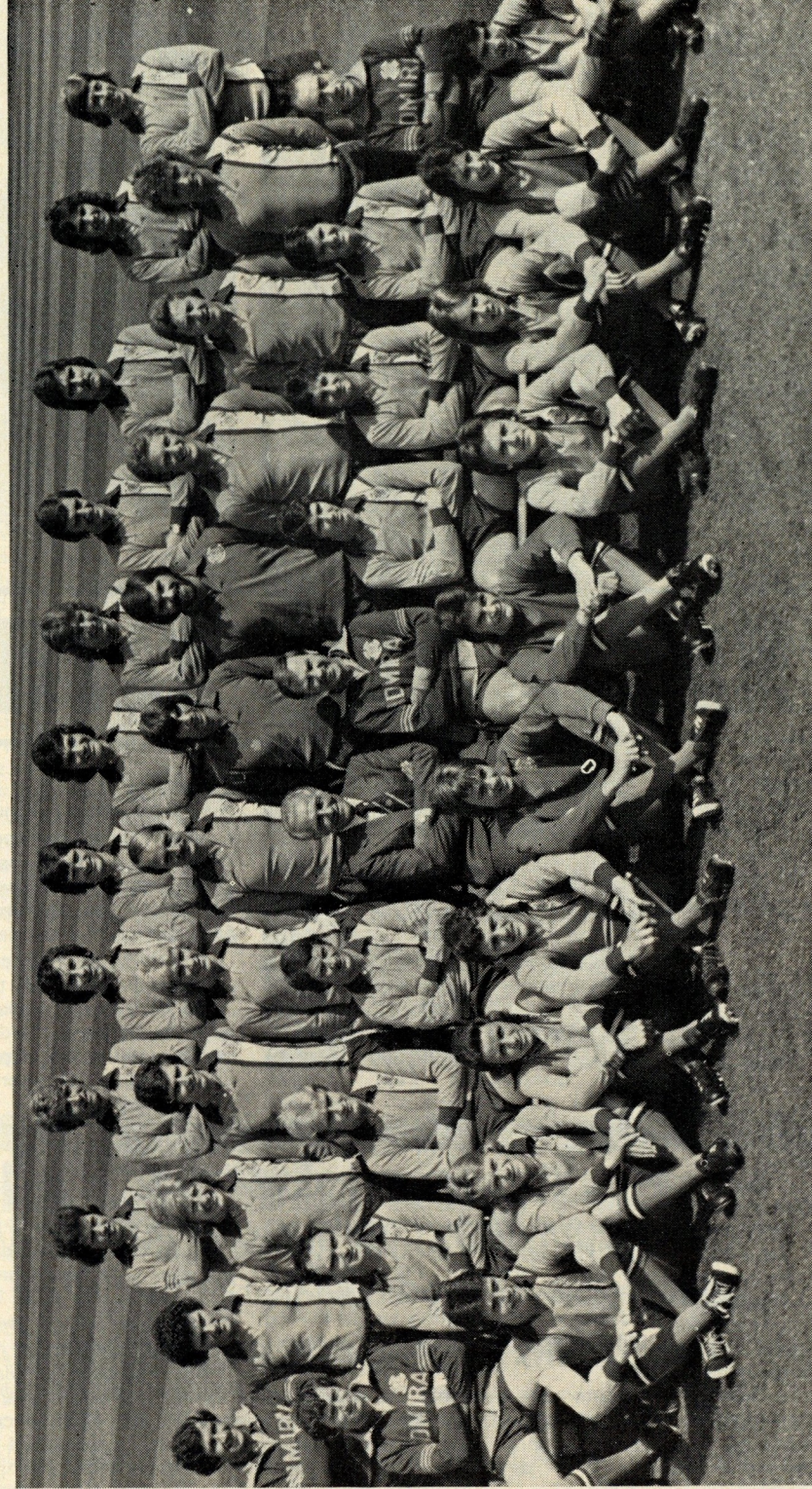
**ADRIAN ALSTON (Striker).** Alston joined the Kenilworth Road playing staff after he'd looked a more than useful player for Australia during the 1974 World Cup. He has 40 Australian caps to his name since leaving his home-town Preston as a teenager, and netted seven goals for the "Hatters" last term in 18 full First Division games.

**RON FUTCHER (Centre-forward).** When he came to Luton with his twin brother Paul in the six-figure transfer deal last December he was, loosely speaking, company for his debut against Ipswich in a 1-0 away win and followed that with a hat-trick in his second game against Wolves—not bad for a 17-year-old who'd only previously played in four matches for Chester! By the end of the season Futchler had scored seven goals in 16 outings, and has so far netted another three in league and cup games this campaign.

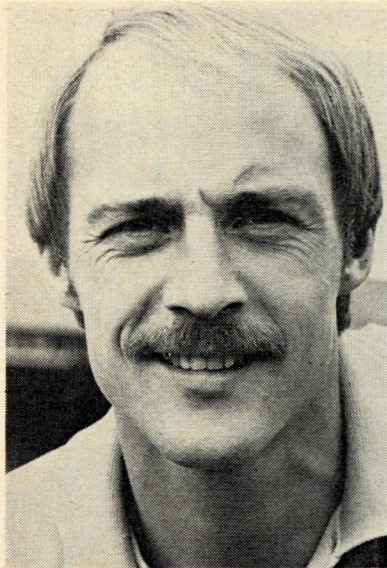
**JOHN SEASMAN (Forward).** Manager Harry Haslam bought this youngster from Tranmere Rovers at the same time as Manchester United signed Steve Coppell, even though Seasman had played in only 15 league fixtures. The ex-Rovers lad was selected for just one First Division game towards the end of last season, and scored!

**PETER SPIRING (Striker).** He was a very promising forward with Bristol City and, after scoring 16 league goals for them in only 57 matches, joined Liverpool for a largish fee over two seasons ago. Immediately he suffered ligament trouble and was out of action for six months, consequently never receiving a senior chance with the Anfield club. He then joined the "Hatters" for a £70,000 fee last season — and broke his toe in his fifth match.

# THE MEN FROM KENILWORTH ROAD



Back Row (left to right) : Peter Mead, Alan West, Gordon Hindson, Jim Ryan, Peter Anderson, Andy King, Pasquale Fuccillo, Brian Chambers, Laurence Coyne, Maitland Pollock.  
First Row : Danny Bergara (Coach), Alex Malcolm, David Carr, Bobby Thomson, Paul Futchler, John Faulkner, Keith Barber, Graham Horn, Steve Litt, Steve Buckley, Paul Price.  
Second Row : David Pleat (Coach), John Aston, Ron Futchler, Peter Spiring, Harry Haslam (Manager), Roy McCrohan (Chief Coach), Adrian Alston, Jimmy Husband, John Seasman, Reg Game (Physiotherapist).  
Front Row : Graham Jones, Wayne Morgan, Barry McHugh, Ian Donnelly, Tony Knight, Andy Roberts, Sandor Simon, Iain Stewart, Steve Russell, Tim Smith.



JOHN FAULKNER



**FOR THE RECORD**  
 Manager : Harry Haslam.  
 Secretary : R. Readhead.  
 Honours : Division Two runners-up 1954/55, 1973/74, Division Three (South) champions 1936/37, Runners-up 1935/36, Division Three runners-up 1969/70, Division Four champions 1967/68, F.A. Cup runners-up 1959.  
 Ground capacity : 25,000 (17,000 covered). Record attendance : 30,069 v. Blackpool, F.A. Cup, 6th Round replay, 4th March, 1959. Record receipts : £16,100 v. Chelsea, Division One, 11th January, 1975.



RON FUTCHER

# WELCOME TO THE "HATTERS"

Luton Town's first season back in the Second Division, following their relegation from the premier section last campaign, has not been helped by a spate of niggling injuries which have deprived them of the services of first team players.

Important midfield man Alan West was injured in the third match of the campaign, against Chelsea at Kenilworth Road, and missed the following six games, while winger John Aston was out of action for two weeks after leaving the field with a twisted knee in the game v. Notts County at Meadow Lane.

Despite these and other mishaps, including a defeat by Darlington in the Second Round of the Football League Cup, John Aston was recently saying that he thought the "Hatters" would still gain promotion at the first attempt! "So far as I can see, the Second Division standard is no better this season than two years ago. On the other hand, we are a considerably improved side thanks to the experience we gained in the First Division. On that basis, if we were good enough to win

promotion in 1974 then we must stand an even better chance this season", he explained.

Town certainly have some very talented players at their disposal, but there are also other positions that do not look quite so secure and it leaves doubts about the overall, and consistent, capabilities of the side. The ability they do possess, and the form they are capable of producing was amply illustrated by four consecutive First Division results last Christmas. They then gained seven points from eight after winning only one of their first 21 fixtures. Included amongst this short successful spell were a 1-0 home win over Derby County and an identical winning scoreline against Ipswich Town at Portman Road. They also gained other impressive scalps when defeating Leeds United and Everton towards the season's end.

Luton are probably the only club, in recent years, to have scaled all four divisions of the Football League in both directions and in rapid succession! In 1958/59 they were First Division members and our

opponents in the F.A. Cup Final, but they were relegated the next season.

After three mediocre years in Division Two they lost their status once more and, by 1965, had completed the journey to the very basement of the league.

In 1968 Mr. Alec Stock was appointed manager of the Kenilworth Road club and, by the end of that same campaign, the "Hatters" had commenced their upward travels when finishing that term as Division Four champions.

After just a two-year stay in the Third, they then won Division Two status which they held for four years before re-gaining their First Division berth in 1974 after a 14-year absence.

Their renewed acquaintance with the elite only lasted one season and they are now once more in the Second Division, currently occupying a mid-table berth.

The last time we played Luton at the City Ground was the opening day of the '73/74 campaign. We gained an impressive 4-0 victory with Tommy Jackson scoring twice, whilst Neil Martin and Duncan McKenzie also found the target. — M.H.

# DO YOU REMEMBER ?

Tonight's visit of Luton Town will not only revive memories of that wonderful Wembley meeting in 1959, but also the one at Kenilworth Road on the night of Tuesday, 12th January, 1971.

Over 23,000 supporters on that January evening witnessed what can only be described as an unforgettable Third Round F.A. Cup replay. A match that will be alive in my mind for a long long time and a game that had those lucky enough to be present, both in the compact press box and on the terraces or in the stands, buzzing from the kick-off until the final whistle.

At half-time, Luton probably deserved to be two or three goals ahead but had to be satisfied with a 1-1 scoreline. The goals in the first 45 minutes coming from Forest's Peter Cormack with Malcolm Macdonald, following a Forest blunder, snatching the equaliser.

After the interval there was a fantastic spell of entertainment with a goal rush. Forest with goals from Collier, who had arrived on the scene as substitute for the injured McIntosh, scoring with a header from literally his first touch of the ball. Lyons, expertly rounding the goalkeeper, made it 3-1 to put Forest in what seemed to be a secure position.

The goals, however, continued with such speed that Luton were soon firmly back into the picture. Chapman brought down Jimmy Ryan,



and Macdonald (who else), made no mistake from the penalty spot to make it 3-2. The noise was tremendous, with the home team being driven on by their loyal supporters cheering for the equaliser.

This came when Macdonald again scored by calmly smashing the ball into the net with the atmosphere now at boiling point as the match seemed certain to go into extra time. With less than a couple of minutes of normal playing time left, Paul Richardson spotted a gap in the Luton defence to find Ronnie Rees who outsped those who chased him and with his first-time shot put Forest into the Fourth Round.

It seemed ironical that Forest, who were without leading goalscorer Ian Storey-Moore, had equalised their goals tally from 12 league matches in 90 glorious minutes of cup football.

Four months following that memorable game, Luton Town sold Malcolm Macdonald to Newcastle United for a reported £180,000 and, as many First Division defences have since found out, "SuperMac" can still score goals as he did so well on that January evening nearly five years ago.

T. BUCKLEY

Pictured in centre column are Malcolm Macdonald and Peter Cormack who both scored goals in this particular cup-tie.

## Join THE Winning Team!..

### JOIN THE MEN IN MODERN MINING

There are VACANCIES for SKILLED & SEMI-SKILLED MEN at most local collieries, also APPRENTICESHIPS and Training Schemes for boys under 18 years of age.

Apply for details of jobs and career opportunities to:- Mr. I. SMITH, Head of Manpower, National Coal Board, South Notts. Area, Bestwood, Nottm. Tel. Nottm. 273711



The sign of



**HOME BREWERY**

Fine Ales

## VAUXHALL AT CLIFTON

The Clifton Car Company Ltd.  
Clifton Lane, Clifton, Nottingham NG11 8NA  
Telephone : Nottingham 211228

**Buy your new Austin from the  
one stop motoring centre**

**Manu Egerton**



Church St. Lenton,  
Nottingham Tel: 77781

*...used cars, service and parts too!*

**SHIPSTONE**  
of  
**NOTTINGHAM**

**Brewers for  
over a  
century**

## F. SISSON & SONS LTD.

STATION RD., LANGLEY MILL, NOTTM.

TELEPHONE: LANGLEY MILL 2171/2

### Nottingham Forest

Red Shirts, White Shorts

	Total Apps.	Goals
1. JOHN MIDDLETON	49	—
2. VIV ANDERSON	29	—
3. FRANK CLARK	15	—
4. JOHN McGOVERN	23	1
5. JOHN COTTAM	105	4
6. PAUL RICHARDSON	215	20
7. TERRY CURRAN	9	—
8. MARTIN O'NEILL	104	11
9. JOHN O'HARE	22	4
10. BARRY BUTLIN	36	7
11. IAN BOWYER	87	22
12. BRYN GUNN	10	—

Referee :

Mr. N. J. ASHLEY  
(Nantwich)

Tonight's match ball has  
been kindly donated by  
**JOHN E. B. WHEATLEY  
LIMITED**

**Builders & Contractors**  
Diamond Avenue  
Kirkby-in-Ashfield

Linesmen :

Mr. T. S. PAGE (Boston) (Red Flag)  
Mr. A. SEVILLE (Birmingham) (Yellow Flag)

### Luton Town

White Shirts, White Shorts

1. KEITH BARBER
2. JOHN RYAN
3. BOBBY THOMSON
4. PETER ANDERSON
5. JOHN FAULKNER
6. PAUL FUTCHER
7. JIMMY RYAN
8. PETER SPIRING
9. RON FUTCHER
10. BRIAN CHAMBERS
11. JOHN SEASMAN
12. ALAN WEST

**PRIVATE & PUBLIC WORKS CONTRACTORS**

**FOLLOW YOUR  
TEAM BY**



**SKILLS**

29—57 seater Luxury Coaches available  
for hire. Anytime—Anywhere. Quota-  
tions gladly given for your next outing.

ST. PETERS STREET, NOTTINGHAM  
TELEPHONE 74645

## COMMODORE

Cabaret & Banqueting Suite  
NUTHALL ROAD - NOTTINGHAM

Telephones 71746 and 79642

Open for functions of all types. Catering for Banquets,  
Dinner Dances, Exhibitions, Conferences, Weddings, etc.,  
from 50 to 750 persons.

Extensive Menu and Price list available on request.

**THE FAMOUS COMMODORE CABARET SEASON**  
commencing May, 1976

For further details and advance booking 'phone 71746 and  
79642. Mailing List in operation.



**Luxury  
Kitchen,  
Bathroom  
and Fitted**

**Bedroom Showroom**

Authorised Home  
Improvement Centre

Open Monday to Friday 8.30-5 p.m.  
Saturday 8.30-1.30 p.m.

- TILES
- ACCESSORIES
- SHOWERS
- PLANNING SERVICES

English and Continental Ranges

**D. PAVIS LTD.**

LENTON LANE, Nr. CLIFTON BRIDGE  
NOTTINGHAM Telephone 861951  
Excellent Car Parking Facilities

# WHERE ARE THEY NOW?



Can anyone identify themselves on this photograph taken at Wembley Stadium on Saturday, 2nd May, 1959 and are they also here tonight for the game against our former Cup Final opponents? We'd very much like to hear from them and particularly the two young ladies who are obviously in such good spirits.

## FOREST TRAVEL BY ROAD OR BY FORESTRAIL

A610 to the M1 Motorway, then North along the M1 for 51 miles to Intersection (38) Huddersfield, A637. **56 miles.**

A637 to Flockton. At 1½ miles on turn left along the A642 to Tandem. Bear right along the A629 to Huddersfield. A640 to the M62 Motorway. **71 miles.**  
M62 West for 14 miles to Intersection (20) Oldham, Rochdale, A627 (M). **85 miles.**

Follow signs "Oldham" along the A627 (M) to the terminal of the Motorway spur, then continue into Oldham entering by Chadderton Way. Turn left along Boundary Park Road to

**OLDHAM ATHLETIC FOOTBALL GROUND. 90 miles.**

v. **OLDHAM ATHLETIC**  
Saturday, 25th October  
Depart Nottingham Midland 11.19 a.m.  
Arrive Oldham 1.50 p.m.  
Depart Oldham 5.44 p.m.  
Arrive Nottingham Midland 8.05 p.m.

**£3 Second-class return**  
**£3.50 First-class return**

Tickets obtainable now from the Pools office

# CLUB CLUB CLUB SCENE SCENE SCENE

## SUCCESSIVE HOME DEFEATS

Prior to the recent bad run of league results at the City Ground the last occasion we lost four successive home games was in season 1971/72. They were to Crystal Palace (0-1), Leicester City (1-2), 'Spurs (0-1), and Ipswich (0-2). The only other post-war occasion was the last match of 1953/54 when we were beaten by Blackburn (0-1), and the first three City Ground games (Stoke (0-3), Hull (0-1), and Bury (2-3)) that opened the following season. However the worst-ever sequence of home defeats was way back before the first world war when we lost seven games on the trot.

## FOREST ↔ LUTON

Several players have been transferred between the two clubs and amongst those who spring readily to mind are:

Forest to Luton: Gerry Morgan (1929); Stewart Imlach (1960).

Luton to Forest: Horace Gager (1948); Syd Ottewell (1948); Barry Butlin (1974).



TERRY HENNESSEY

ANNIVERSARIES TODAY . . .  
21st October

1961 — Jack Burkitt played his last competitive match for us after a career spanning 13 years. His

testimonial game against Malmoe (Sweden) was abandoned after 78 minutes through fog. In all he made 503 appearances, a total which at that time was a record — only since surpassed by Bob McKinlay. Jack was captain for many years and led us to victory over Luton Town in the F.A. Cup Final at Wembley in 1959.

Our cover picture shows Jack receiving the coveted trophy from H.M. Queen Elizabeth on that occasion.

1967 — Terry Hennessey gained his ninth international cap whilst with us when he played for Wales against England at Ninian Park. England won 3-0. Terry was subsequently transferred to Derby County.

1969 — Ronnie Rees played for Wales v. East Germany at Cardiff.

## LOST TEETH!

Terry Curran has lost his two front teeth — for the second time! He was elbowed in the mouth at Fulham and they could not be found. Hope they don't "gum up" the groundsman's mower but, at least, it should put some "bite" into the Craven Cottage attack.



# FOREST NIGHT

at the HEART OF THE MIDLANDS, MONDAY, 27th OCTOBER, 1975 at 8 p.m.

Tickets £1.50 each (including Tombola Ticket)

Major Tombola Prize—PORTABLE TELEVISION plus 100 Other Prizes

Cabaret: **ROBERT YOUNG** (International Singing Star) and **FULL SUPPORTING ACTS**

**BRIAN CLOUGH AND HIS PLAYERS WILL BE THERE**

Don't delay, book now . . . or any weekday.  
Tickets available at Pools Office, City Ground

Stamped addressed envelope,  
please, if applying by post

382  
30 49 76 303.917  
75 283  
49 55 2056  
442 641 5651

# FACTS and FIGURES

Date	Score last season	OPPONENTS	Home score F A	Away score F A	SCORERS	Att.
1975						
Aug. 16	—	Plymouth Argyle	2—0		1 o.g., O'Hare	13,083
19	—	Rotherham United (L.C.1)		2—1	Chapman, McGovern	4,912
23	0—2	Portsmouth		1—1	Bowyer	10,655
27	—	Rotherham United (L.C.1)	5—1		Lyall (2 p.), Richardson (2), Bowyer	7,977
30	0—2	Notts County	0—1			19,757
Sept. 6	—	Chelsea		0—0		21,323
10	—	Plymouth A. (L.C.2)	1—0		Bowyer	8,978
13	4—0	Hull City	1—2		Robertson	12,191
20	1—1	Oxford United		1—0	Lyall	5,318
24	—	Charlton Athletic	1—2		Robertson	10,588
27	2—3	Bolton Wanderers	1—2		Lyall	10,780
Oct. 4	2—4	Bristol Rovers		2—4	Robertson, Bowyer	7,698
8	—	Manchester City (L.C.3)		1—2	Bowyer	26,536
11	1—0	Fulham		0—0		10,149
18	0—0	Southampton	3—1		O'Neill, O'Hare, Cottam	12,677
21	—	Luton Town	H			
25	0—2	Oldham Athletic	A			
Nov. 1	—	Carlisle United	H			
4	0—0	Blackpool	A			
8	0—0	Sunderland	A			
12	—	League Cup 4				
15	0—0	Bristol City	H			
22	1—0	Southampton	A			
29	2—1	York City	H			
Dec. 3	—	League Cup 5				
6	1—1	Orient	A			
13	1—2	Portsmouth	H			
20	—	Plymouth Argyle	A			
26	2—1	Albion	H			
27	—	Blackburn Rovers	A			
1976						
Jan. 3	—	F.A. Cup, 3rd Round				
10	3—1	Hull City	A			
14	—	League Cup, Semi-Final				
17	—	Chelsea	H			
21	—	League Cup, Semi-Final				
24	—	F.A. Cup, 4th Round				
31	—	Luton Town	A			
Feb. 7	0—0	Blackpool	H			
14	1—1	Sunderland (5)	H			
21	0—1	Bristol City	A			
24	—	Charlton Athletic	A			
28	1—0	Oldham Athletic (L.C.F.)	H			
Mar. 6	—	Carlisle United (6)	A			
13	1—1	Fulham	H			
20	1—1	York City	A			
27	2—2	Orient	H			
April 3	0—2	Bolton Wanderers (S.F.)	A			
10	1—2	Oxford United	H			
13	2—2	Notts County	A			
17	1—0	Albion	A			
20	—	Blackburn Rovers	H			
24	1—0	Bristol Rovers	H			
May 1	—	F.A. Cup Final				

### LEAGUE ATTENDANCES

Home aggregate — 79,076  
Home average — 13,179  
Away aggregate — 54,893  
Away average — 10,979

Published by  
Carrington Publications Ltd.

Printed by  
Temple Printing (Nottm.) Ltd.  
Telephone Nottingham 868304

## CENTRAL LEAGUE

1975	OPPONENTS	Home score F A	Away score F A	SCORERS
Aug. 16	LEEDS UNITED		1—3	McIntosh
20	SHEFFIELD WEDNESDAY		2—0	Butlin (2)
23	DERBY COUNTY	4—3		McCann, Butlin (3)
26	EVERTON	3—0		O'Neill, McCann, Butlin
30	NEWCASTLE UNITED		1—3	McCann
Sept. 13	ALBION		1—4	Woodcock
17	COVENTRY CITY	3—0		Curran (2), McCann
20	BLACKBURN ROVERS	2—1		McCann (2)
23	PRESTON NORTH END		1—0	McCann
27	BLACKPOOL		3—1	Woodcock, Bowery (2)
30	COVENTRY CITY		1—3	Bowery
Oct. 3	MANCHESTER UNITED	3—1		Bowery, O'Neill, McCann
15	HUDDERSFIELD TOWN	1—1		Bowery
18	MANCHESTER CITY		0—0	
22	PRESTON NORTH END (3 p.m.)			
25	BURY			
Nov. 1	WOLVES			
8	STOKE CITY			
15	ASTON VILLA			
22	MANCHESTER CITY			
25	SHEFFIELD UNITED			
Dec. 6	BURNLEY			
10	BOLTON WANDERERS			
13	DERBY COUNTY			
17	LEEDS UNITED			
1976				
Jan. 3	LIVERPOOL			
10	ALBION			
24	NEWCASTLE UNITED			
Feb. 4	SHEFFIELD WEDNESDAY			
7	EVERTON			
14	STOKE CITY			
21	ASTON VILLA			
28	BURY			
Mar. 10	WOLVES			
17	HUDDERSFIELD TOWN			
24	SHEFFIELD UNITED			
27	BURNLEY			
April 3	BLACKPOOL			
10	BLACKBURN ROVERS			
17	LIVERPOOL			
19	BOLTON WANDERERS			
24	MANCHESTER UNITED			

### TRAVEL WITH THE TEAM TO SOUTHAMPTON

The manager has expressed his desire to travel with the club's supporters on our special train to Southampton on Saturday, 22nd November.

A large train has been booked with a first-class Diner Car incorporated. So come and book early and support us in this new venture! Second-class return will be only £3.50. What about that for great value!

There will also be a limited amount of first-class diner seats in the executive coach with hot meals on the outward and return journeys and a centre Main Stand seat for the all-in price of £15.

So if you are considering travelling first-class in the executive coach or second-class, book early! Do not be one of the supporters we may have to disappoint at the last minute.

## SECOND DIVISION

Position	P	W	D	L	F	A	Pts.	
1	Bristol City	13	8	3	2	29	14	19
2	Sunderland	13	8	2	3	20	10	18
3	Bolton Wanderers	12	7	3	2	24	13	17
4	Fulham	12	6	3	3	17	9	15
5	Notts County	12	6	3	3	12	11	15
6	Southampton	11	6	2	3	21	13	14
7	Bristol Rovers	11	4	5	2	12	9	13
8	Oldham Athletic	11	5	3	3	17	17	13
9	Blackpool	12	4	4	4	12	14	12
10	Luton Town	11	4	3	4	13	10	11
11	Hull City	12	4	3	5	9	11	11
12	Chelsea	13	3	5	5	13	17	11
13	Charlton Athletic	11	4	3	4	11	17	11
14	Orient	12	3	4	5	8	10	10
15	Albion	11	2	6	3	7	14	10
16	FOREST	11	3	3	5	12	13	9
17	Oxford United	12	3	3	6	11	18	9
18	Blackburn Rovers	11	2	4	5	9	11	8
19	Plymouth Argyle	11	3	2	6	10	14	8
20	Portsmouth	11	1	6	4	7	14	8
21	York City	11	2	3	6	11	17	7
22	Carlisle United	12	2	3	7	10	18	7

## CENTRAL LEAGUE

Position	P	W	D	L	F	A	Pts.	
1	Liverpool	14	11	2	1	33	12	24
2	Albion	13	9	2	2	32	13	20
3	FOREST	14	8	2	4	26	20	18
4	Everton	14	8	0	6	20	16	16
5	Stoke City	13	7	2	4	20	16	16
6	Aston Villa	14	6	4	4	21	19	16
7	Derby County	13	6	3	4	22	15	15
8	Newcastle United	12	5	5	2	15	11	15
9	Burnley	14	7	1	6	19	24	15
10	Wolves	14	6	2	6	23	19	14
11	Leeds United	12	6	2	4	21	20	14
12	Preston N.E.	14	6	2	6	13	19	14
13	Manchester Utd.	13	6	1	6	16	13	13
14	Manchester City	14	5	3	6	15	16	13
15	Bury	13	3	5	5	11	18	11
16	Bolton Wanderers	14	4	3	7	14	25	11
17	Coventry City	15	4	2	9	18	24	10
18	Sheffield Wed.	13	3	4	6	11	15	10
19	Huddersfield T.	13	2	5	6	12	15	9
20	Blackpool	13	3	1	9	16	29	7
21	Sheffield United	12	3	1	8	9	20	7
22	Blackburn Rovers	13	2	2	9	18	26	6

BACK NUMBERS of the "Forest Review" (this season's home games only) can be obtained by sending 10p (plus stamped addressed envelope) for each copy to: "Back Numbers", "Forest Review", Carrington Publications Ltd., c/o Temple Printing (Nottingham) Ltd., Wilford Crescent East, Nottingham NG2 2EF.

# Warning from Redmaynes

adidas the world famous '3-striped' soccer shoes should only be worn by the best players on the field, and not by 'Forest' supporters.

However, adidas suggest that if you must wear the famous '3-striped' sports equipment, that you contact **Redmayne & Todd Ltd., Carrington Street, Nottingham** (official suppliers to **Nottingham Forest F.C.**) who stock the full range of adidas sports and recreation clothing and equipment.

RED MAYNE & TODD—YOUR LOCAL ADIDAS STOCKIST.



# SECOND DIVISION SUMMARY

(League games only)

Team	Leading Scorer(s)	Highest Home Crowd	Highest win(s) v.
Blackburn Rovers	2—Beamish, Parkes	15,773—Sunderland	4-1—Oldham Athletic
Blackpool	7—Walsh	9,564—Southampton	4-3—Southampton
Bolton Wanderers	6—Whatmore	16,080—Notts County	5-0—Charlton Athletic
Bristol City	11—Cheesley	17,918—Bristol Rovers	4-0—Charlton Athletic
Bristol Rovers	5—Bannister	13,577—Sunderland	4-2—Forest
Carlisle United	3—Barry, Clarke, Laidlaw	8,683—Blackburn Rov.	2-1—Portsmouth
Charlton Athletic	4—Hales	10,305—Hull City	3-1—Oldham Athletic
Chelsea	5—Wilkins	22,841—Oxford United	3-1—Oxford & Carlisle
Fulham	4—Busby, Howe	22,921—Chelsea	4-0—Albion
Hull City	3—Greenwood	8,642—Bristol Rovers	3-1—Bristol City
Luton Town	2—Anderson, Fitcher R., Husband, King	19,024—Chelsea	3-0—Chelsea
Forest	3—Robertson	19,757—Notts County	3-1—Southampton
Notts County	4—Bradd	11,742—Oxford United	2-0—Hull City
Oldham Athletic	4—Jones	10,406—Chelsea	3-2—Plymouth Argyle
Orient	2—Bennett	6,054—Blackburn Rov.	1-0—Plymouth, York, & Carlisle United
Oxford United	5—Clarke D.	9,069—Sunderland	2-0—Bolton Wanderers
Portsmouth	3—Piper	16,144—Chelsea	1-0—Orient
Plymouth Argyle	4—Johnson	18,304—Sunderland	2-1—Carlisle United
Southampton	8—Channon	21,227—Chelsea	4-0—Portsmouth
Sunderland	5—Robson, Towers	28,689—Chelsea	4-0—Notts County
West Bromwich Albion	2—Brown A., Hurst	18,014—Chelsea	1-0—Luton, Plymouth
York City	2—McMordie, Jones, Seal	5,640—Bolton Wand.	2-0—Oxford United

## I'M IN CHARGE

Mr. N. J. ASHLEY (Nantwich)

Began refereeing in the Crewe and District League, progressed through the Mid-Cheshire and Cheshire County Leagues and went on the League linesman's list in 1971. Was a linesman at a European Cup Winners game in Lisbon in November, 1974 and on the line for a League Cup semi-final in season 1973/74. Won promotion to the League's full list for the 1974/75 season after one season on the supplementary list.



FOREST  
TOKENS  
1975/76

8

FOREST TOKENS  
ARE VALUABLE!  
Be safe and collect a set.

## Scorechart

	Half Time	Full Time		Half Time	Full Time
<b>A</b> Oldham v. Southampton	.....	.....	<b>M</b> Colchester v. Rotherham	.....	.....
<b>B</b> Middlesbro' v. Mansfield	.....	.....	<b>N</b> C. Palace v. Hereford U.	.....	.....
<b>C</b> Plymouth v. Blackburn R.	.....	.....	<b>O</b> Fulham v. Motherwell	.....	.....
<b>D</b> Swansea C. v. Darlington	.....	.....	<b>P</b> Huddersfield v. Torquay	.....	.....
<b>E</b> Portsmouth v. Bristol Rov.	.....	.....	<b>Q</b> Gillingham v. Chesterfield	.....	.....
<b>F</b> Northampton v. Brentford	.....	.....	<b>R</b> Barnsley v. Exeter City	.....	.....
<b>G</b> York City v. Charlton Ath.	.....	.....	<b>S</b> Preston v. Peterborough	.....	.....
<b>H</b> Cambridge v. Lincoln	.....	.....	<b>T</b> Shrewsbury v. Port Vale	.....	.....
<b>J</b> Bury v. Swindon Town	.....	.....	<b>U</b> Wa'sall v. Millwall	.....	.....

Half-time scores will be shown on the scoreboard.

Full-time scores will be announced over the public address system.  
GOLDEN GOAL RESULTS (WEEK 10) FOREST v. SOUTHAMPTON  
1st Goal—20 minutes 52 seconds. 2nd Goal—37 minutes 04 seconds

## ANSELLS BITTER



Join the  
Bittermen

## DON'T FORGET YOUR MATCH DAY POOLS TICKETS!

(Incorporating £350 "Golden Goal" and "Saturday Soccer Treble")

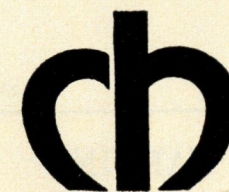
ON SALE AT THE CITY GROUND AT ALL FIRST TEAM HOME GAMES

**£900**

to be won weekly for only 10p!

## Join the Club

Industrialists, Developers, Architects and Consultants. Why not join the group of satisfied people who SELECT as part of their TEAM



**CROWN HOUSE ENGINEERING LIMITED**

ELECTRICAL and MECHANICAL ENGINEERS and CONTRACTORS

DUKE STREET . NEW BASFORD . NOTTINGHAM

Telephone 700731



# Keep smiling



## It's nice to know there's No. 10

PLAYER'S UNBEATABLE QUALITY WITH 5 VOUCHERS

PNT 292

---

EVERY PACKET CARRIES A GOVERNMENT HEALTH WARNING

---