

WELCOME TO THE DELL

SOUTHAMPTON



FOOTBALL LEAGUE DIVISION II
SATURDAY NOVEMBER 8th 1975

Kick-off 3:00 pm
TODAY'S VISITORS

Luton Town



OFFICIAL MATCHDAY MAGAZINE Price 10p



SOUTHAMPTON FOOTBALL CLUB LTD

The Dell, Milton Road, Southampton, SO9 4XX. Tel: 23408

President: H G BLAGRAVE

Vice-President: R J STRANGER CBE MC

Directors: G READER chairman
E C CHAPLIN vice-chairman
JOHN CORBETT

Lt.-Col. Sir GEORGE MEYRICK (Bart.), MC

Lt.-Col. T H REDDY TD
B G W BOWYER TD JP
F G L ASKHAM FCA A A WOODFORD

Hon Consultant Surgeon:
Sir JAMES FRASER (Bart.) ChM
FRCS (Edinburgh)

Hon Consultant Orthopaedic Surgeon:
R K JACKSON FRCS

Hon Medical Officer:
DR D B RAMSAY MB ChB

Manager: LAWRIE McMENEMY

Chief Executive: TED BATES

Secretary: KEITH HONEY

Assistant Secretary: DENYS RAYNOR

Commercial Manager: MALCOLM PRICE

Sales Manager: MIKE TWISS

Senior Physiotherapist:
DON TAYLOR MCSP SRP

Training and Coaching Staff:

First Team: JIM CLUNIE

Reserve Team: GEORGE HORSFALL

Youth Team: JOHN McGRATH

Club Scout: BILL ELLERINGTON

Groundsman: LEN STANSBRIDGE

Club Magazine Production
Editor: MALCOLM PRICE
Printed by J.B. Shears & Sons Ltd.
All Magazine enquiries to the
Club Magazine Editor c/o THE DELL



TALK OF THE DELL

Last weeks game at Charlton completed one third of the season and although I thought we played far better than we did in our previous away game at Oldham, we still conceded four goals and it is our goals against tally that is seriously affecting our being nearer the league's pacemakers at this point in time.

Why is it that basically the same team can play so convincingly at home and yet get pulled all over the place when they trot out on someone else's park? Many theories have obviously been muted in the pubs, clubs, factories and offices during the course of this season but I would suggest that no-one really knows the answer, least of all the players who for my money gave their all at Charlton for little reward except to know that once again they contributed to make the game as fluent as it was.

My feeling on this away complex is that our next game at Orient really needs to be the turning point. The law of averages demands that during the course of the season, points have to be lost at home and when this does happen it is essential that the law of averages

works the other way to ensure a certain amount of points away from home. After having seen nearly all the teams in our division this season I recently sat down and tried to do the impossible, to analyse from the fixtures up to the end of the season how the final placings might look provided my own personal match by match predictions come about. Not wishing to put my head completely on the block, but just to provide a discussion point for other possible pundits I came up with the following deductions, that the top third of the league would consist of the following teams, Bolton, Bristol City, Fulham, Nottingham Forest, Southampton, Sunderland and West Bromwich Albion (in alphabetical order) that the bottom third of the table would be made up of Blackburn, Carlisle, Hull, Orient, Oxford, Portsmouth and York and that the mid table positions will be occupied by Blackpool, Bristol Rovers, Charlton, Chelsea, Notts County, Oldham and Plymouth.

Perhaps you would like to do your own crystal ball gazing and go one step further and try to predict the top three and the

bottom three teams. Drop me a line within the next week letting me know how you see these issues being resolved and when the season ends I'll have a look through your letters and give the entry nearest to an all correct prediction a £10 voucher to spend in the Saints Shop.

One Team I deliberately missed out of my analysis so as not to motivate or otherwise was today's visitors Luton Town to whom we extend a warm welcome to The Dell. The Hatters of course will be anxious to get some sort of reward from their journey South to help them in their quest for a speedy return to the top flight from where they were relegated last season.

With two points also of paramount importance to ourselves, it promises to be a rare tussle, so let's hope we see an attractive game played in the best of spirits.

Well, that's about it for now so until we meet again on November 22nd when Nottingham Forest will be our visitors, enjoy yourselves and let's hear you as you get right behind the team again.

Malcolm Price

MORE ACTION at the DELL SOON

FOOTBALL
LEAGUE DIVISION II

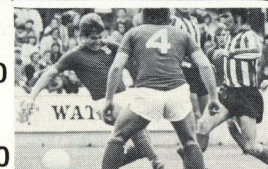
Nottingham Forest

SATURDAY 22nd NOV. K.O. 3.00

FOOTBALL
LEAGUE DIVISION II

Sunderland

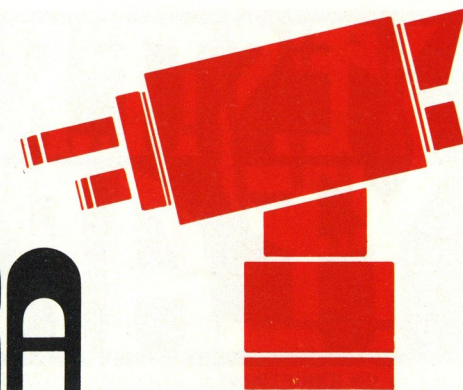
SATURDAY 6th DEC. K.O. 3.00



SAINTS



IN CAMERA



ACTION
REPLAY

Mel Blyth gets in a header on the York goal from a corner kick in our recent game here at the Dell again st York City which we won 2-0.



ACTION
REPLAY

York City Goalkeeper Graeham Crawford does exceptionally well to palm out a fierce shot from Saints striker Mike Channon in the same match against York.

YESTER YEAR

A LOOK BACK AT THE SAINTS THROUGH THE YEARS



THIS WEEK FEATURES
1953-54
SEASON

Back in the Third Division, after 31 years, we set about the difficult task of regaining our place in Division Two. Our first home game of the season played in midweek to avoid clashing with an important cricket match at the County Ground was a real cracking game with a 2-0 win over Watford and perhaps signs of what was in store. But, as the weeks went by, we had to acknowledge that we could not match the consistency of teams like Ipswich, Brighton and Bristol City. Only one club was promoted in those days, of course, and in spite of our outstanding home record, we had to settle for sixth place.

Only two other clubs in the entire League won more home games (17) than we did. The only team to win here was, surprisingly, Southend United. It was our away form which killed our promotion hopes - 16 defeats was the sort of return normally recorded by bottom-of-the-table teams.

One of the features of our return to the Third Division was the commencement of "derby" games against Bournemouth. While the two clubs had been competing in the League together for 21 years we had never previously met in a competitive match. Strangely, this season we made up fully for our earlier loss by meeting four times.

We each gained two points from our League meetings though the Cherries, rather fortunately, came off best in the F.A. Cup. We seemed to be in line for victory at The Dell, leading with an Eric Day penalty to nil and only a few seconds remaining. When Frank Fidler crashed home the equaliser. Bournemouth won the replay 3-1 on the same day that England were crushed at Wembley by the Hungarian Magyars who prompted soccer officials everywhere to have a new look at our game. Eric Day finished third highest scorer in the division with 26 goals, the best tally by a Southampton player since Charlie Wayman scored 32 in 1948/49. The consistent Day was yet again the only Saint to play in every game - the third successive season he had achieved this.

Getting out of the Third Division was clearly not going to be an easy task but Manager, George Roughton, lined up one or two new signings during the summer in a bid to do a little better the next season. Also, at this period in time, one Edward T. Bates was beginning to show his worth as reserve team trainer/coach.

League scorers:

Day 26; Flood 14; Hoskins 12; Walker 9; Wilkins 1; Williams 5; Horton 6; Digby 1; Gaynor 1; Dudley 1.

League Results	Home	Away
Aldershot	2-0	1-1
Brighton	1-0	1-2
Bristol City	4-2	0-1
Bournemouth	2-1	1-3
Coventry	2-1	1-2
Colchester	2-1	1-0
Crystal Palace	3-1	3-4
Exeter	2-0	0-4
Gillingham	1-0	0-2
Ipswich	1-1	1-2
Leyton Orient	4-1	4-1
Millwall	4-2	1-2
Newport	4-0	4-0
Norwich	0-0	0-1
Northampton	1-0	0-3
Queen's Park Rangers	3-1	1-0
Reading	1-0	1-4
Shrewsbury	4-2	2-3
Southend	3-5	1-2
Swindon	3-1	1-0
Torquay	2-2	1-1
Walsall	0-0	0-1
Watford	2-0	0-2

League appearances:

Day 46; Christie 43; Gregory 41; Flood 38; Hoskins 35; Clements 36; Walker 32; Wilkins 33; Elliott 31; Williams 25; Traynor 23; Horton 21; Simpson 19; McLaughlin 17; Ellerington 17; Digby 11; Gaynor 12; Parker 8; Purves 3; Oakley 3; Dudley 3; Keirnan 3; Turner 2; Whittle 2; McGowan 1; Brown 1.

FINAL LEAGUE TABLE 1953/54 DIVISION III

	P	W	D	L	F	A	Pts
1 Ipswich	46	27	10	9	72	51	64
2 Brighton	46	26	9	11	86	61	61
3 Bristol City	46	25	6	15	88	61	56
4 Watford	46	21	10	15	88	69	52
5 Northampton	46	20	11	15	77	37	51
6 Southampton	46	22	7	17	67	45	51
7 Norwich	46	20	11	15	73	56	51
8 Reading	46	20	9	17	86	73	49
9 Exeter	46	20	8	18	58	58	48
10 Gillingham	46	19	10	17	61	66	48
11 Leyton Orient	46	18	11	17	79	76	47
12 Millwall	46	19	8	19	74	77	47
13 Torquay	46	17	12	17	81	88	46
14 Coventry	46	18	9	19	61	59	45
15 Newport	46	19	6	21	58	83	44
16 Southend	46	19	5	22	69	71	43
17 Aldershot	46	17	9	20	74	87	43
18 Queen's Park Rangers	46	16	10	20	60	68	42
19 Bournemouth	46	16	8	22	67	70	40
20 Swindon	46	15	10	21	67	72	40
21 Shrewsbury	46	14	12	20	65	76	40
22 Crystal Palace	46	14	12	20	60	86	40
23 Colchester	46	10	10	26	50	78	30
24 Walsall	46	9	8	29	40	87	26

2 AND 3 REVIEW

TUESDAY, October 28th at THE DELL

SAINTS RES. 2. LEICESTER RES. 1.

TEAM: (4-3-4) Turner, Andruszewski, Phillipson-Masters, Waldron, O'Brien, Berry, Crabbe, Steele, Dawtry, Gilchrist, Earles. Sub: Shipley.

A strong looking Midland side which included Graham Cross and Alan Birchenhall extended Saints all the way in a game which was always interesting as first one side and then the other tried to find a way through resolute defences. A blank interval scoreline was a fair reflection on a very even first half. The deadlock was broken when young Kevin Dawtry picked up a short pass and blasted home a superb effort from well outside the penalty area. Leicester equalized following a free kick from which a few defensive questions could possibly be asked. However, Saints got both the points with a Mike Berry penalty just before the final whistle following a handling offence by a Leicester defender.

WEDNESDAY, October 29th at DEAN COURT

BOURNEMOUTH YOUTH 2 SAINTS YOUTH 1.

TEAM: (4-3-3) Bruen, Sharp, Hart, Arnold, Coak, Baker, Williams, Hayes, Neville, Sealey, Hebbard. Sub: Jacobs.

Saints exit from the F.A. Youth Cup came as very much a surprise to everyone who had seen their standard of play up to date. However, its goals that win matches and our coastal neighbours got one more than us. Bournemouth went ahead with the only goal of the first half when a defensive mix-up let them in to score. The Young Saints applied the pressure in the second half only to see the Cherries break away and go further ahead. Kevin Dawtry reduced the deficit with a well taken goal and spurred on a splendid final rally which however hard as they tried could not penetrate the Bournemouth back line.

SATURDAY, November 1st at ASHTON GATE

BRISTOL CITY RES. 3. SAINTS RES. 0.

TEAM: (4-3-3) Turner, Andruszewski, Phillipson-Masters, Waldron, Steele, O'Brien, Berry, Crabbe, Neville, Gilchrist, Earles. Sub: Shipley.

Saints unbeaten run of eleven games came to an abrupt end when a Bristol side playing equally as well as their currently successful senior side really pulled out the stops and won quite convincingly. The Saints team with Gerry O'Brien having his second comeback game following injury, never really matched the West Country side and although the final scoreline did tend to flatter them, with their last goal coming just before the end from a breakaway following a period of Saints pressure during which time they hit the bar, there was never really any doubt as to where the two points really belonged. Saints to their credit kept plugging away and if that shot from Gerry O'Brien, which cannoned off the bar, had gone in it might have been a different story.

SATURDAY, November 1st at ROMSEY

ROMSEY TOWN 2 SAINTS 'A' 1.

TEAM: (4-3-3) Bruen, Sharp, Hart, Arnold, Coak, Baker, Williams, Hayes, Dawtry, Sealey, Hebbard, Sub: Jacobs.

This Southampton Senior Cup Tie eventually found a winner at the third time of asking following a drawn first game and eventful second game last week which was also being drawn at the time of abandonment. Saints had an opportunity to go ahead early on but unfortunately missed out from the penalty spot. Not to be deterred we took the lead when Tony Sealey fired home only to see the Town get back on level terms following some mid-field indecision. Although Saints continued to play their usual brand of attractive football the goals would not come and Romsey went on to clinch the tie with a further goal late in the second half.

HERE AND THERE

AT THE DELL TUESDAY 11th NOVEMBER

SAINTS RES v FULHAM RES

K.O. 7.30 p.m.

AT B.T.C. GROUND STONEHAM LANE
SATURDAY 15th NOVEMBER

SAINTS 'A' v WARSASH

K.O. 2.15 p.m.

INTRODUCING



Back Row (left to right): Peter Mead; Alan West; Gordon Hindson; Jim Ryan; Peter Anderson; Andy King; Pasquale Fuccillo; Brian Chambers; Laurence Coyne; Matt Pollock. **First Row:** Danny Bergara (Coach); Alex Malcolm; David Carr; Bobby Thomson; Paul Futcher; John Faulkner; Keith Barber; Graham Horn; Steve Litt; Steve Buckley; Paul Price. **Second Row:** David Pleat (Coach); John Aston; Ron Futcher; Peter Spiring; Harry Haslam (Manager); Roy McCrohan (Chief Coach); Adrian Alston; Jimmy Husband; John Seaman; Reg Game (Physiotherapist). **Seated:** Graham Jones; Wayne Morgan; Barry McHugh; Ian Donnelly; Tony Knight; Andy Roberts; Sandor Simon; Iain Stewart; Steve Russell; Tim Smith.

Luton's early-season confidence has been slowly eroded following a string of disappointing results. Everyone at Kenilworth Road had set their hearts upon regaining the club's First Division place at the first attempt and, when they won three of their four opening games, the Hatters really looked to be marching solidly towards their objective. The rot began to set in after their shock 1-2 defeat at Darlington in the League Cup. This was closely followed by a home defeat by Bolton (0-2) and a set-back at Notts Co. (0-1).

When the Hatters could only draw successive home games against Plymouth (1-1) and Blackburn (1-1) it began to look as if, perhaps, Harry Haslam had set his sights too high.

Yet a glance at the League table will show that it is far too early yet to write them off. The manager, staff and all the players, still feel they will make it. "We've a far better side than when we won promotion two years ago, so if we made it then we can do it again," is the general attitude.

The manager has obviously been forced to make several changes as results went against them: nothing too dramatic - which could damage their rhythm completely - more of a gradual evolution of ideas and outlooks.

The defence has, however, remained static until just recently. Keith Barber has been in

goal, co-ordinating with a back four of John Ryan, John Faulkner, Paul Futcher and Steve Buckley. The experience of former England player Bobby Thomson has, however, been re-introduced recently at left-back, at the expense of young Buckley.

Barber made his League bow in 1971 and, though losing his place last season, has now re-established himself.

John Ryan's first taste of League football came with Fulham who were in the First Division when he made his bow in 1967/68. When he was released in 1969, he quickly found a new club in Luton. Early in his career he played for Arsenal's junior teams.

Faulkner sprang to fame in Sutton's fabulous F.A. Cup run in 1969/70 when he was later signed by Leeds. After making his First Division debut, he had the misfortune to break a knee. He never quite made the same impact after that so he was happy to make a fresh start with Luton in 1972.

Paul Futcher was only 16 when he made his League debut for Chester against Cambridge in March 1973, but so quickly did he establish himself in the men's world of professional football, that he was transferred to Luton for £100,000 little more than a year later!

Buckley is one of the youngest members of the Luton side and is now into his second campaign as a first-teamer.

LUTON TOWN



Thomson played for England on eight occasions, and also gained 15 under-23 caps, in his Wolves' days. After completing 300 senior appearances for the Molineux club he moved on to Birmingham City in 1969. Following a short loan period with Walsall, he signed for Luton in 1972.

Alan West, Peter Anderson, Andy King, Jimmy Ryan and Brian Chambers have all appeared in midfield.

West won England under-23 honours in his Burnley days but, after losing his place in the team which won the Turf Moor club promotion in 1972/73, he felt he would like to make a fresh start elsewhere. He signed for Sunderland but they amazingly turned him down, following a medical. Luton had no such reservation, signing him for £80,000 soon after 1973/74 kicked off.

Luton signed Anderson from Hendon in February 1971 and promoted him immediately into their Second Division side. He soon settled and, indeed, the following season he was leading scorer with 10 goals.

King, a former Luton apprentice, made his first League appearance as substitute in the final game of last season.

Jimmy Ryan began his career with Manchester United, making several First Division appearances for them. It was after signing for Luton in 1970 that his League career really got under way, though.

Chambers developed with Sunderland but had the misfortune to lose his senior place shortly before their famous Cup run in 1972/73. He moved to Arsenal at the end of that season but remained only a year before joining Luton.

Ron Futcher and Adrian Alston are usually the central strikers - though both Peter

Spiring and Jimmy Husband have been given a run here - with either John Aston or John Seaman on the wing.

Ron Futcher was supposed to have been the make-weight in the deal which took him and his identical twin brother Paul from Chester to Luton in 1974. In fact, he has made every bit as big an impression as his brother. How many seventeen-year-olds have hit four goals in their first two full First Division games? That was Ron's achievement last season.

Alston won world fame as the star of Australia's attack in the 1974 World Cup. He signed for Luton shortly afterwards and, though born in England, he maintains his Australian passport in the hope of winning further caps. He has more than 30 so far. He was once a Preston junior before emigrating in 1968.

Spiring has been plagued by injuries since leaving Bristol City for Liverpool on a £60,000 transfer in 1973. He spent the majority of his Anfield days under treatment and never got a chance in their first-team. Luton offered him a fresh start last season, paying £70,000 for him, but still the knocks continue to take their toll.

Husband made his name with Everton where he was for several years a first-teamer, following his debut at Fulham in April 1965. While at Goodison he won five England under-23 caps to add to his youth and schoolboy honours.

Aston gained England under-23 honours, and a European Cup-Winners' medal while with Manchester United. He moved to Luton for £30,000 in 1972. Seaman was spotted by Luton manager Harry Haslam playing in Tranmere's reserve team and he signed him towards the end of last season.

TOOMERS SPORTS HOUSE

19, London Rd., Southampton. Tel: 23694
and 20, West St., Fareham. Tel: 82547

Suppliers to the Saints and many other league clubs.



SAINTS

MATCHDAY FACTFINDER

1975-76

LEAGUE DIVISION TWO

Up to and Including Saturday 1st November

	P	W	D	L	F	A	Pts
Sunderland	15	8	0	1	20	4	7 22
Bristol C.	15	5	1	1	15	4	12 20
Bolton	14	4	2	2	14	4	11 20
Fulham	14	3	3	1	10	10	11 18
Bristol R.	14	3	3	2	10	10	11 18
Notts Co.	14	3	3	2	10	10	11 18
Southampton	14	7	0	0	19	3	17 16
Oldham	14	6	1	1	15	3	12 16
Charlton	14	4	1	1	12	6	7 14
Hull	14	3	3	3	8	7	6 8
Nott'm F.	14	3	3	4	12	8	4 13
Luton	14	3	3	3	11	8	4 13
Orient	14	4	3	3	4	3	0 0
Chelsea	15	3	4	0	11	5	3 5
W.B.A.	13	2	4	0	11	6	4 10
Plymouth	14	4	2	1	11	10	1 1
Blackpool	14	3	3	2	10	10	1 1
Blackburn	14	1	1	4	6	8	1 5
Oxford	14	2	2	3	6	6	1 1
Carlisle	14	1	4	3	6	6	1 0
Portsmouth	14	0	5	3	5	9	1 4
York	14	2	0	3	5	9	1 4

FOOTBALL COMBINATION

	P	W	D	L	F	A	Pts
Birmingham	15	10	3	2	19	7	23
West Ham United	15	11	1	3	44	19	23
Southampton	14	8	4	2	26	10	20
Ipswich Town	13	8	2	3	22	12	18
Luton Town	14	7	4	3	24	15	18
Bristol City	13	6	3	4	20	12	15
Chelsea	14	5	5	4	24	18	15
Fulham	13	3	8	2	13	12	14
Bournemouth	15	3	8	4	18	17	14
Arsenal	13	3	6	4	13	13	12
Leicester City	14	5	2	7	20	22	12
Oxford United	12	5	2	5	15	18	12
Cardiff United	13	5	2	6	16	19	12
Queen's Park Rangers	14	5	2	7	20	24	12
Crystal Palace	14	5	2	7	21	30	12
Swindon Town	14	5	2	7	15	28	12
Plymouth Argyle	12	4	3	5	13	18	11
Norwich City	13	3	4	6	14	15	10
Tottenham Hotspur	13	3	3	7	20	22	9
Reading	11	3	3	5	9	18	9
Bristol Rovers	15	3	2	10	19	42	8
Orient	14	0	7	7	15	27	7

DATE	OPPONENTS	Last Season	This Season	LGE POS	1	2	3	4	5	6	7	8	9	10	11	12		
Aug 16	West Brom Albion	1-0	15,638	3-0	15,246	—	Middleton	Rodrigues	Steele	Holmes ¹	Bennett	Blyth	O'Brien	Channon ¹	Stokes	McCalliog	Peach	Fisher
23	Notts County	2-3	7,830	0-0	8,495	6	Middleton	Rodrigues	Steele	Holmes	Bennett	Blyth	O'Brien	Channon	Stokes	McCalliog	Peach	Fisher
26	Bristol City	0-1	21,019	3-1	16,833	1	Middleton	Rodrigues	Steele	Holmes	Bennett	Blyth	O'Brien	Channon	Stokes ²	McCalliog	Peach ¹	Osgood
29	Plymouth Argyle	—	—	1-0	19,000	1	Middleton	Rodrigues	Steele	Holmes	Bennett	Blyth	O'Brien ⁵	Channon ¹	Stokes	McCalliog	Peach	Osgood
Sept 6	Bolton Wanderers	2-3	14,348	0-3	9,188	3	Middleton	Rodrigues	Steele	Holmes	Bennett	Blyth	O'Brien	Channon	Osgood	McCalliog	Peach ⁵	Fisher
9	Bristol Rovers LC2	—	—	0-1	10,757	3	Middleton	Rodrigues	Steele	Holmes	Bennett	Blyth	O'Brien	Channon	Osgood	Stokes	Peach	Fisher
13	Blackburn Rovers	—	—	2-1	13,279	3	Middleton	Rodrigues	Steele	Holmes	Bennett	Blyth	O'Brien	Channon	Osgood	Stokes ¹	Peach ¹	McCalliog
20	Blackpool	0-3	8,831	3-4	9,564	5	Middleton	Rodrigues ¹	Steele ¹	Holmes ¹	Bennett	Blyth	O'Brien ⁵	Channon	Osgood	Stokes	Peach	Fisher
27	Portsmouth	2-1	19,361	4-0	17,310	5	Middleton	Rodrigues	Peach ¹	Holmes	Bennett	Blyth	Fisher	Channon ¹	Osgood	McCalliog	Stokes	Gilchrist
Oct 4	Hull City	1-1	9,004	0-0	6,342	6	Middleton	Rodrigues	Peach	Holmes	Bennett	Blyth	Fisher	Channon	Osgood	McCalliog	Stokes	Waldron
11	Chelsea	—	—	4-1	21,277	6	Middleton	Rodrigues	Peach	Holmes ¹	Bennett	Blyth	Fisher	Channon ¹	Osgood	McCalliog	Stokes ¹	Gilchrist
18	Notts Forest	0-0	11,554	1-3	12,677	6	Middleton	Rodrigues	Peach	Holmes	Bennett	Blyth	Fisher	Channon	Osgood ¹	McCalliog	Stokes	Gilchrist
21	Oldham Athletic	1-1	12,397	2-3	11,219	8	Middleton	Rodrigues	Steele ⁵	Holmes ²	Bennett	Waldron	Fisher	Channon	Osgood	McCalliog	Peach	Crabbe
25	York City	2-1	13,224	2-0	13,501	7	Middleton	Rodrigues	Waldron ⁵	Holmes	Bennett	Blyth	Fisher	Channon ¹	Stokes	McCalliog ¹	Peach	Osgood
31	Charlton Athletic	—	—	1-4	16,036	7	Middleton	Rodrigues	Peach	Holmes	Bennett	Blyth	Fisher	Channon	Osgood ¹	McCalliog	Stokes	Steele
Nov 8	Luton Town	—	—	—	—	—												
14	Orient	1-2	7,580	—	—	—												
22	Notts Forest	0-1	15,703	—	—	—												
29	Carlisle	—	—	—	—	—												
Dec 6	Sunderland	1-1	16,738	—	—	—												
13	Notts County	3-2	12,973	—	—	—												
19	West Brom Albion	3-0	16,823	—	—	—												
26	Bristol Rovers	3-0	17,490	—	—	—												
27	Oxford Utd.	4-0	11,135	—	—	—												
Jan 3	F.A. Cup 3	—	—	—	—	—												
10	Blackburn Rovers	—	—	—	—	—												
17	Bolton Wanderers	0-1	18,339	—	—	—												
24	F.A. Cup 4	—	—	—	—	—												
31	Oldham Athletic	1-0	12,400	—	—	—												
Feb 7	Bristol City	0-2	15,708	—	—	—												
14	Luton Town	—	—	—	—	—												
21	Orient	4-2	14,542	—	—	—												
24	Fulham	0-0	13,560	—	—	—												
28	York City	1-1	8,245	—	—	—												
Mar 6	Charlton Athletic	—	—	—	—	—												
13	Chelsea	—	—	—	—	—												
20	Carlisle	—	—	—	—	—												
27	Sunderland	1-3	34,021	—	—	—												
Apr 3	Portsmouth	2-1	19,543	—	—	—												
10	Blackpool	1-1	14,694	—	—	—												
16	Plymouth Argyle	—	—	—	—	—												
17	Bristol Rovers	1-0	15,182	—	—	—												
19	Oxford Utd	2-1	11,491	—	—	—												
24	Hull City	3-3	16,730	—	—	—												
May 1	F.A. Cup Final	—	—	—	—	—												
	Fulham	to be arranged	—	—	—	—												

• Denotes Home Game Saints Score always given first

S indicates Substituted Player. Figures indicate goals scored

SIDELINES

Records used over the Public Address System are kindly supplied by:-
Debenhams Record Centre, Queensway, Southampton



Just a word of thanks to all those people who helped provide the entertainment before the game and at half time on Monday evening at our game against S.K. BRANN. The Penalty Competition before the game proved very popular and was eventually won by The Southern Evening Echo three man team who each received an engraved lighter for their efforts. Upon checking the statistics afterwards it was interesting to see that out of the 72 kicks taken only 29 were actually converted. We hope very much to be able to give other local concerns the opportunity to beat this figure as the season progresses.

Our thanks also to the members of the Southampton and Eastleigh Athletic Club, who once again did us proud with a couple of splendid relay races during the interval. That the likes of Donna Murray and Alan Drayton, to mention just two, can find time to come along and compete in what are not the most ideal conditions and put on such interesting races really does them credit.

Finally, we extend our thanks to Mike Smith, the chairman of the Athletic Club, for his help and co-operation in the staging of the events and of course for the excellent commentary given during the races.



TRAVELLERS CLUB

SATURDAY NOVEMBER 15th

ORIENT

ADULT FARE £1.25

SATURDAY NOVEMBER 29th

CARLISLE

RAILWAY FARE £5.50

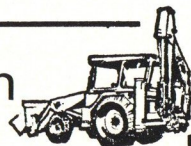
BOOKINGS FOR MEMBERS ONLY.



Why not hire your plant from

SOUTHAMPTON PLANT HIRE
LIMITED

PRIORY WORKS, 154/160 PRIORY ROAD, SOUTHAMPTON. TEL. 550222/3/4/5



PICK A PRESENT



SCARVES

Bar Scarves	1.30
Varsity	1.50
Tartan Wool	.80
Red/White/Black	1.30
Silk (Home & Away)	.65

HATS

Bob (Home & Away)	.95
Crimplene Caps	.85
Tartan Hats	.85
Jockey Caps	.25

PHOTOGRAPHS

Team Photo (5 x 7)	.35
Individual (5 x 3½)	.25
Channon (7 x 5)	.35
Osgood (7 x 5)	.35
Channon/Osgood/Blyth	.35

SOFT TOYS

Bears from	1.25
Good News/Bad News	.45
Car Mascot	.90
Gonks	1.15
Womble	1.50

SAINTS SWEATERS

24"/26"/28"	3.50
30"/32"/34"	3.95
36"/38"/40"	4.50
42" and above	4.95

All made to order.

SAINTS SPECIALS

Pennants	.35
Club Lighter	3.99
Table Lighter	6.75
Mugs	.50
Autograph Books	.65
Pens from	.10
Prog Holders	.70
Rings	.45
Car Badge	1.30
Stick-on Car Badge	.25
Saints Sticker	.20
Car Tax Holder	.15
Hold-all	1.99
Super Hold-all	3.25
Identity Bracelet	.45
Beer Glass	.80
Blazer Badge	.50
Track Suit Badge	.35
Finger Patch	.30
S/S Lapel Badge	.35
Enamel Lapel Badge	.30
Sammy Saint	.95
Necklace Pendants	.60
Key Ring	.25
S/S Cuff Links	1.50
Club Tie	2.25
Alarm Clock	4.95
Picture Clock	8.50
Mike Channon Poster	.30
Mike Channon Story	.45
Saints Fan Bands	.75
Star Pic Picture Badges	.30
Stick-on-Rosettes	.10

SOUVENIRS

1st & 2nd Div. Lapel Badges	.30
1st & 2nd Div. Pennants	.35
Rosettes - All clubs	.20
Football Car Hangers	.25
Boot Car Hangers	.25

SAINTS KIT

Shirts from	2.95
open V neck	
Shorts from	1.10
with red stripes	
Socks from	.65
white/yellow	
Track Suits from	6.36
red with white trim	
Shinguards from	.86

Boots & Training Shoes
by HUMMEL * CHEETAH *
POWER * METRIC * INTER

Footballs from	3.75
Matchballs from	7.95
Keepers Jerseys from	2.95
Keepers Gloves from	.50
Hold-alls from	1.99

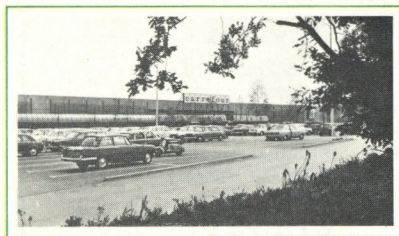
SAINTS SHOP

The only shop that supports "The Saints"
YOU'LL FIND US JUST TO THE RIGHT OF THE
MAIN ENTRANCE IN MILTON ROAD

(OPEN SIX DAYS A WEEK MONDAY - SATURDAY 9.00 am - 5.15 pm)

Carrefour

"It's Simply Cheaper"



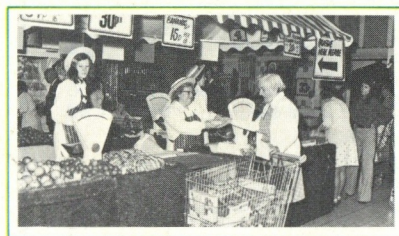
FREE CAR PARK

No more searching for a parking space. There are almost Nine Hundred in our Free Car Park right alongside the store. No need to hump your purchases, you can wheel a trolley straight out to your car. On your way out take advantage of our 4 Star Petrol at a competitive price.



A LICENSED RESTAURANT FOR NEARLY 300 PEOPLE

Visit our Restaurant, you'll find a good selection of meals that are varied each day, plus special meals for children. Remember, our restaurant is licensed so you can treat yourself to a glass of wine with your meal. You will be most welcome from 9.30am to 7.30pm on Tues, Wed, Thurs and Sat - we are open to 8.30pm on Friday's.



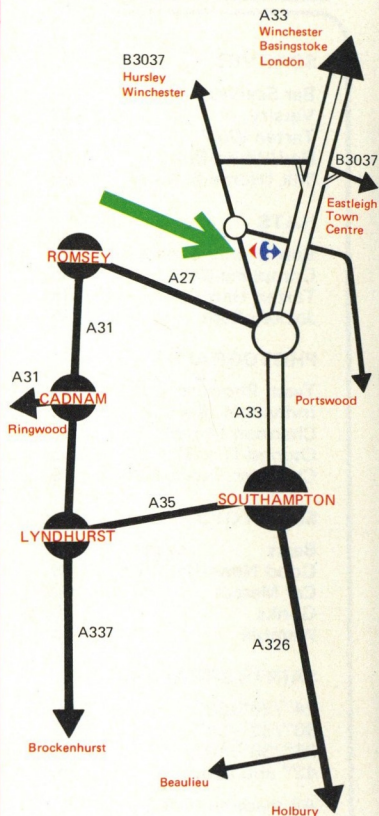
FRESH FOOD DAILY

Our Delicatessen gives you an amazing array of things to choose from - rows of Pate, Cheeses, Cooked Meats etc. The Bakery ovens are producing hot, crusty bread, all day long. A breathtaking array of fresh fish all you would find in a Traditional Seaside Fishmongers. The Fruit and Vegetable Department offers you a self-service and counter service range of local grown, fresh every day fruit and vegetables.



A CHOICE OF OVER 25,000 ARTICLES

In an area as big as a football pitch, you'll find a range of goods stacked almost to the roof. Our range of leisure goods for Camping and Caravanning includes air beds, tents, windbreaks, camping stoves and sunglasses, all at very competitive prices. We can supply a large range of wines and spirits. We have clothes for babies and children, also teenage and adult fashions. Plus a large selection of footwear.



Open 9am to 8pm
Tues, Wed, Thurs, Sat
Special late night opening
9am to 9pm Friday

CLOSED ALL DAY MONDAY