

**WELCOME
"THE LATICs"**



**LUTON TOWN
FOOTBALL CLUB** ©

OLDHAM

V

**VOLUME 3 NUMBER 9
FOOTBALL LEAGUE DIVISION TWO
SATURDAY 15th NOVEMBER 1975
(Kick-off: 3.00 pm)**

**OFFICIAL PROGRAMME
PRICE: TEN PENCE**



LUTON TOWN FOOTBALL AND ATHLETIC COMPANY LIMITED

© **KENILWORTH ROAD
LUTON
BEDFORDSHIRE**

Telephone: 0582 411622/3/4/5

PRESIDENT: T. HODGSON

VICE-PRESIDENTS:

LORD HILL SIR REGINALD PEARSON, *O.B.E.* J. A. C. BAIN JOHN BRENT T. R. KEENS

CHAIRMAN: L. S. HAWKINS

DIRECTORS:

R. L. BANKS R. I. BURR DENIS MORTIMER E. S. PEARSON H. RICHARDSON
R. J. SMITH J. R. YATES

MANAGER:

HARRY HASLAM

SECRETARY:

DOUG LYGO, *A.C.M.A.*

STADIUM MANAGER:

DAVE ROBERTS

CHIEF COACH: ROY McCROHAN **ASSISTANT COACH:** DAVID PLEAT **YOUTH TEAM COACH:** DANNY BERGARA **PHYSIOTHERAPIST:** REG GAME

POOLS MANAGER:

MIKE HARDWICKE

ASSISTANT SECRETARY & TICKET MANAGER:

JOHN WILKINSON

MEDICAL OFFICERS:

Dr P. J. BURROWS, M.A., M.B., B.Chir.(Cantab), D.(Obst), R.C.O.G.
Dr A. M. D. MITCHELL, B.A., M.B., B.Chir.(Cantab), D.(Obst), R.C.O.G.

SOLICITORS:

LATHOM & COMPANY—King Street, Luton, Bedfordshire

BANKERS:

NATIONAL WESTMINSTER

AUDITORS:

MESSRS. HILLIER, HILLS, FRARY & COMPANY—Chartered Accountants

HARRY'S TOWN

First of all I must say that I am very sorry to see Eric Morecambe resign from the Luton Board. Eric has done a great deal for the Town and in his six years at the club, he made Luton Town a household name.

We will all miss his cheerful face in the boardroom and hope that he will not sever all his connections with the club. Eric resigned because of pressure of work. He has just started filming another series of the Morecambe and Wise Show.

It is ironic that the first home match that Eric should miss after leaving the board should be against Oldham. For the Lancashire club have just appointed another comedian—Eric Sykes—to their board.

It is five years since the two clubs met in the Third Division days. Since then we have been to the First Division and back, and Oldham have won promotion to the Second Division.

This season neither of us has set the Second Division alight so far, but both clubs remain hopeful of being in there at the end. Oldham have collected a couple more points than we have, and today we shall be doing our utmost to overhaul them again.

I was sorry that the Jimmy Johnstone deal fell through last week. Even though the player had been given a free transfer by Celtic, he obviously commanded a high price wages-wise, and the board felt that we could not afford it.

That's how tight money is at the moment. So it still looks as if I am going to have to sell to buy. After that good win over York I honestly thought the tide had turned for us, and that we would start picking up some of the results we felt we were capable of.

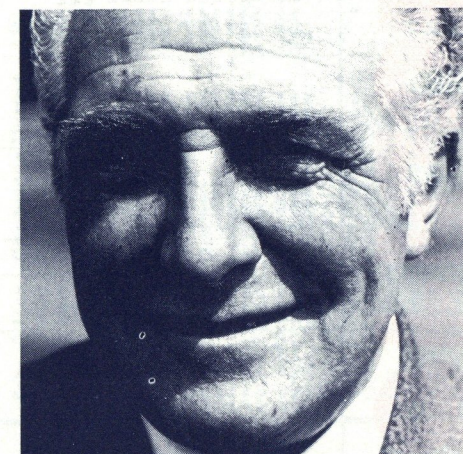
I thought we played well at Southampton last week. We were worth far more than a 3-1 defeat,

I can tell you that. We went to entertain and to attack, and we did just that. The difference was that their efforts went in. Ours didn't.

I am not moaning, but all I think we need is a bit of luck. We almost scored twice before Southampton went ahead, and their crowd showed that they appreciated the way we played.

It would be nice to chalk up a good win today, just to convince ourselves and everyone else that we can still score goals. It would also be a good way to start a run of three matches against London Clubs.

Next week we go to Fulham to try to beat Alec Stock's side for the second time this season. After that we have Orient at home and then go to the Valley to take on Charlton. This game has been brought forward from Saturday (Dec 6th) to the Wednesday evening (Dec 3rd). Kick-off: 7.30pm. It's going to be another busy month.



Introducing

THE HATTER

the Club's own 16-page Newspaper

★ Harry's Talk-in

★ Improve your soccer skills with Danny Bergara and Dave Pleat

PLUS—Photos, News, Pop, Statistics

PRICE **10p** Order it **NOW** from your local newsagent

If you have difficulty in obtaining your copy phone Dave Roberts—Luton 411622



At a Board Meeting held last week, the Board of Directors voted that Director, Denis Mortimer, be the man responsible to lead the attack against the present economic situation that confronts the Company. He has been appointed Chief Executive to be responsible to the Board of Directors for the efficient running of the Club and that as Chief Executive he shall have the full power to enable him to carry out his duties covering all aspects of the Company's operations.

"I am very proud to have been entrusted with this important assignment and I would like to thank my fellow Directors for both their faith in me and the support given, I would also like to take this opportunity of assuring both staff and supporters that I shall spare no effort to ensure that the Club operates as a successful and harmonious organisation.

"My first job will be to co-ordinate the finance and commercial activities within the club, and I am looking forward very much to working with Harry Haslam on the playing side.

Mr Len Hawkins will continue as Chairman of the Club in a non executive capacity and will be responsible for The 'Bobbars' Stand and Supporters Club which has been, and continues to be, one of the most successful sources of fund raising we have.

Mr Jim Yates will have full responsibility for all commercial activities, he has already shown flair and leadership in this very important side of the Club's operation.

Mr Jim Richardson will continue as Director in charge of finance and all other Directors have indicated their keenness to participate to the full wherever necessary.

Regardless of the dramatic press coverage, I can say there has not been a Boardroom split. Our company operates in a most democratic manner and each Director has an opportunity to air his point of view—this without fear or favour. A difference of opinion does not amount to a split or Boardroom tantrums.

With regard to Jimmy Johnstone, someone has forgotten to inform you that

although Jimmy was on a free transfer from Celtic, he was looking for a large signing-on fee. For a possible one or two year's service, this would not have been viable."

We have an acute financial problem which requires immediate attention, and to survive we must attract larger crowds to Kenilworth Road, improve our commercial activities, reduce the playing staff and cut expenditure all round.

I would appeal to all supporters and organisations within our catchment area for your continued support and understanding of the economic conditions within which football finds itself at this present time, and to assure you that everyone at Kenilworth Road, including myself, will spare no effort in ensuring that the entertainment you deserve is provided. Anybody within our organisation who is not prepared to treat the supporter fairly and squarely and give his all is not required by me. I look forward to better things for Luton Town Football Club and you, the supporter.

*Denis Mortimer,
Chief Executive Director*



WELCOME TO



OLDHAM ATHLETIC A.F.C.

Back row : Les Chapman, Jim Branagan, Alan Young, Ian Robins, Maurice Whittle.
 Middle row : Jimmy McGregor (Physio), Andy Lochhead (Coach), David Holt, Paul Edwards,
 Chris Ogden, John Dungworth, John Platt, Keith Hicks, George Jones, Jimmy Frizzell (Manager).
 Front row : George McVitie, Ron Blair, Ian Wood, Alan Groves, Graham Bell.

Oldham Athletic, down today from the congested soccer area of mid-Lancashire, are having their best overall start to a season in Division Two for forty-five years. And the reason for their good form is an extremely efficient home record, which currently reads:

P9 W6 D2 L1 F16 A10 Pts14

They've had neat wins over Hull, Bristol Rovers, Chelsea, Plymouth, York and Southampton and their only lapse was a 2-4 beating from Bristol City, whom we held to a goalless draw not so long ago. Last Saturday they drew 1-1 with Oxford.

Even away from home, Oldham haven't played too badly, although they have still to win on "foreign" soil. They have picked up points at Blackpool, Portsmouth and West Bromwich, and were very unlucky to lose 2-0 to Aston Villa in a rainswept League Cup tie.

Oldham are now managed—and competently, it might be said—by their former player, **Jimmy Frizzell**, a man who has always believed in attacking defences, especially from the wings.

In his playing days, Jimmy scored plenty of goals and he wants Oldham to follow suit. That's why he's brought back to Boundary Park, striker **Dave Shaw**, who is on loan from West Bromwich Albion. In March 1973, Shaw was sold to Albion for £80,000 after having notched 69 goals in 155 League appearances for Athletic, who originally signed him from Huddersfield Town in October 1969.

In fact, Shaw made a triumphant return to Oldham, scoring a hat-trick, inside a quarter of an hour, against Southampton on October 21st.

There is another ex-Albion man now in Oldham's ranks—**George McVitie**, a right or left winger, who joined Athletic two and a half years ago. He

"BINGO!" "LOTTERY!"

Big News!

FROM

THE HATTERS

For new and existing Agents—
 Great competitions,
 with over **£1,400** in prizes each week!



RESULTS
 PUBLISHED IN "THE HATTER"

Competitions/Prizes

Over £1,400 in big prizes each week!

£250 BINGO!

£100 ANY FULL HOUSE
£ 75 LINE
£ 75 BOOBY

FRUITS!

HUNDREDS OF INSTANT CASH PRIZES £2 TO 10p.

FORWARD LINE!

LOTS OF PRIZES: GREEN SHIELD, CASH, TIGHTS AND MYSTERY PRIZES.

£100 HOLIDAY!

EVERY WEEK

GOLDEN GOALS!

£5 CASH PRIZES ON FIRST GOAL SCORED IN ANY FIRST TEAM HOME GAMES THROUGHOUT THE MONTH.



Performance Awards GREEN SHIELD stamps



GREEN SHIELD STAMPS
ISSUED AS FOLLOWS:

WEEKLY TICKET SALE	STAMPS GIVEN
25	100
50	200
75	300
100	400
125	500
150	600
175	700
200	800
225	900
250	1000
275	1100
300	1200
325	1300
350	1400
375	1500
400	1600
425	1700
450	1800
475	1900
500	2000

THESE MAY BE SAVED AND REDEEMED FOR GOODS, SOME OF WHICH ARE ILLUSTRATED



Wanted - new Agents!

WHAT DOES IT OFFER?

1. Over £1,400 in prizes.
2. Five different competitions.
3. Hundreds of chances to win.

HOW DOES IT WORK?

1. Tickets are delivered weekly, together with weekly results sheets which lists who has won the prizes.
2. Each ticket is self-contained and each competition is explained.

WHAT DOES AN AGENT RECEIVE?

1. 10% commission on sales.
2. 10% bonus on all prizes over £5.
3. Season ticket rebate (1% of sales).
4. The opportunity to buy match tickets when the Hatters are involved in all ticket matches.
5. Agency Cash Draw each week for £50. 20 Prize winners.

AGENTS NEEDED TO SELL TICKETS

All Hatters supporters, both male and female, can act as agents to sell these tickets — at work, among friends, in the local club or pub. There are no "books" to keep — just sell 10 tickets each week and you will be supporting your Club tremendously.

If you can help, please complete below and return to:—Luton Town F.C. Development Assoc., 74, Kenilworth Road, Luton, Beds., or ring:- Luton 30748 and ask for Mike Hardwicke.

WE OFFER THE BEST TICKETS IN THE BUSINESS
SO SIMPLE —
SO EASY TO UNDERSTAND
YET SO INTERESTING

"THE GREAT THREE 'N' EASY"
LUTON LOTTERY
WEEKLY DRAW
3 CHANCES FOR 10p!

DRAW WILL TAKE PLACE EACH TUESDAY
AT 12.0 NOON

OVER £350 IN 156 PRIZES

FIRST PRIZE — £100 (GUARANTEED)

Will be paid to the holder of the Prefix and Number First Drawn

SECOND PRIZE — £50 (GUARANTEED)

To the holder of the Second Prefix and Number Drawn

THIRD PRIZE — £25 (GUARANTEED)

To the holder of the Third Prefix and Number Drawn

FOURTH PRIZE — £10 (GUARANTEED)

To the holder of the Fourth Prefix and Number Drawn

FIFTH PRIZE — (GUARANTEED) — VALUABLE GOLD - PLATED LADIES OR GENTS SWISS-MADE WRIST WATCH

To the holder of the Fifth Prefix and Number Drawn

PLUS — CONSOLATION PRIZES

Each of £1 to all holders of Numbers the Same as 1st, 2nd, 3rd, 4th or 5th Prize Winners, but with a Different Prefix

PLUS — £25 IN DAILY DRAW PRIZES

Each of £5 to holder of the Prefix and Number Drawn Each Day Monday to Friday

Please send further details of a ticket agency for Luton Town F.C.

Name

Address

SEND NOW

started his career off with Carlisle United and to date has over 275 League games behind him (45 goals). McVitie's other wing partner will probably be **Alan Groves**, a much travelled number 11, who, prior to joining Oldham nineteen months back, assisted, in turn, Southport, Chester, Shrewsbury and Bournemouth, totting up a grand total of 150 plus League appearances in the process.

In search of goals, besides Shaw, will be **Ian Robins** and **George Jones**. Robins, at 23, is an established first team performer, who has graduated through the club's junior ranks. A native of Bury, Ian has played in over 175 League and Cup matches for Athletic. Jones, too, is an old campaigner and a very experienced one at that! He has scored fluently in the past for Bury (on two separate occasions) and Blackburn, and is still doing the same for Athletic, who paid out just £10,000 for his services. George had 321 League outings all told for Bury and netted 114 goals... a fine record.

In midfield, searching for and creating scoring chances, will be **Graham Bell**, **Les Chapman** and **Ronnie Blair**.

Bell's dad used to play for Oldham and Graham is stepping firmly into his father's footsteps. He is already in the £150,000 class and in recent matches, has been watched carefully by many leading First Division clubs, including Leeds and Everton.

A highly skilful footballer, Graham signed "pro" a couple of seasons ago and in his younger days won England international recognition in the amateur field. Chapman is in his second spell with Oldham, having played, in between times, for Huddersfield. He had 133 League games for the Leeds Road Club and, being this side of 30, has a lot more still to offer the Latics. (He and Dave Shaw swapped clubs in an exchange plus cash deal).

Northern Ireland international Ronnie Blair is another player having a second "career" at Oldham. He was with Rochdale for two years but is now a vastly improved link man in Oldham's set-up, with well over 250 League appearances under his belt.

The back four in our visitor's line-up will possibly be **Jim Branagan**, **Maurice Whittle**, **Keith Hicks** and **Dave Holt**.

Right-back Branagan has only recently moved to the number 2 spot, but he's settled down in the position extremely well. His father was an Oldham player a few years back and Jim has said that he's going to do as well as his dad did!

Blackburn sold Whittle to Oldham in 1969. Originally a wing-half, Maurice, a hard tackler, is the club's penalty expert and has some 260 League appearances to his credit. An exceptionally hard tackler.

Centre-back Hicks, the 21 year-old former England Youth player (1972), stands six feet tall and weighs 12st 5lb. A local lad, he is brilliant in the air.

Hick's partner and Oldham's sweeper, is **Dave Holt**, whom Bury sold for £25,000 last November. This 22 year-old Lancastrian passed the 200 mark in League outings earlier this season and looks set for a good many more... in years to come.

Behind these last four defenders will be goalkeeper **Chris Ogden**, a product of junior football who was born 22 years ago in Oldham. Chris was chosen as Athletic's "Player of the Year" last season when he was also an ever-present in their League side. He's a safe, agile and sometimes brilliant 'keeper, who last term kept no fewer than 15 clean sheets. Chris's dad was Athletic's 'keeper for many years.

Those then are the men whom **Jimmy Frizzell** hopes will prove quite a handful for Town this afternoon.

No doubt there is a lot of ability in this Oldham team—and if they can click, then we should see some grand football between 3.00 and 4.40 pm. Let's hope so.

Oldham Athletics A.F.C. Facts and Figures:—

Formed: 1894 as Pine Villa. Changed to Oldham Athletic and became a professional club in 1899.

Ground: Boundary Park (since 1905).

Record crowd: 47,671 (v Sheff. W. F.A.C. 1930). Present limit: 30,000 (16,000 under cover).

Honours: Div. 1 Runners-up 1914-15.

Div. 2 Runners-up 1909-10

Div. 3 (N) Champions 1952-53.

Div. 3 Champions 1973-74.

Div. 4 Runners-up 1962-63

Best win: 11-0 (v Southport Div. 4 1962-63).

Heaviest defeat: 4-13 (v Tranmere Div 3 (N) 1935-36).

Most League points in a season: 62 (1973-74).

Most Goals: 95 (1962-63).

Record League appearance maker—Davey Wilson: 369 (1907-21).

Most League goals by player in season—33, by Tommy Davis (1936-37).

Most League goals in aggregate total—110, by Eric Gemmell (1947-54).

INTERESTING FACTS—

Today's game will be number 2,469 in League football for Oldham, and their 719th match in Division Two.

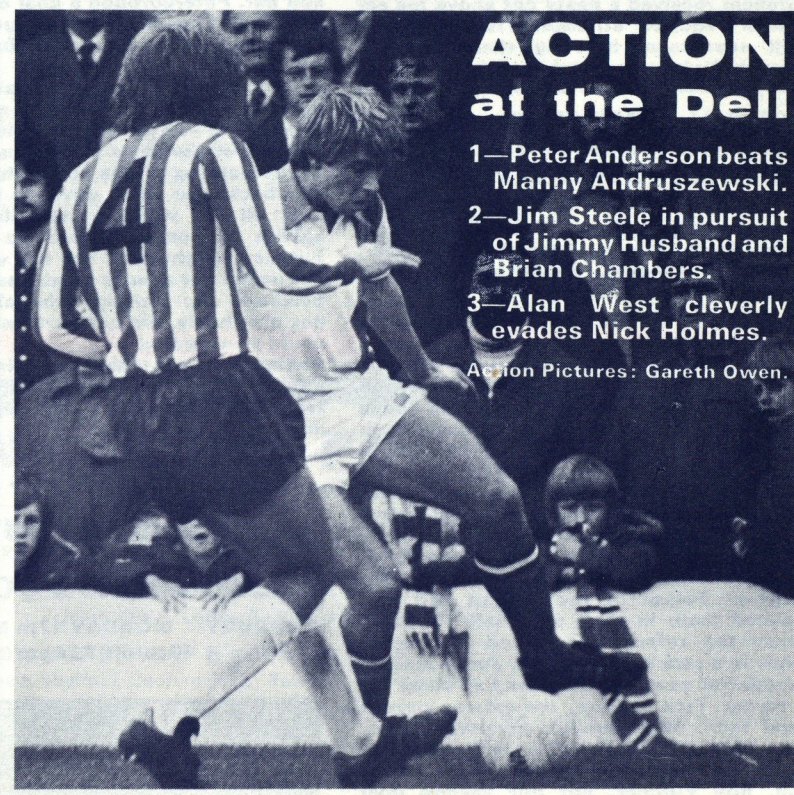
In all, Oldham have appeared in five divisions, and have drawn up these records—(to date)—

	P	W	D	L	F	A	Pts
Div 1	358	123	97	138	436	504	343
2	718	277	158	283	1077	1102	712
3	414	156	96	162	593	609	408
4	320	121	70	129	499	513	312
3 (N)	658	256	171	231	1085	1002	683

Totals 2468 933 592 943 3690 3730 2458

OLDHAM





ACTION at the Dell

- 1—Peter Anderson beats Manny Andruszewski.
- 2—Jim Steele in pursuit of Jimmy Husband and Brian Chambers.
- 3—Alan West cleverly evades Nick Holmes.

Action Pictures: Gareth Owen.

TOWN CHAT

MASCOT

This afternoon's mascot is Kevin Snoxell of 4A Vicarage Street, Woburn Sands, Milton Keynes. Kevin is eleven years old.

BALL DONOR

The ball for this afternoon's game has been kindly donated by all the Luton fans who travelled on the Tricentral coach to Sunderland and Southampton. Thank you all for this much appreciated gesture.

UNLUCKY START

Graham Horn, our goalkeeper whom Brentford have taken on a month's loan, did not have the happiest of baptisms in the Fourth Division. Against a Tranmere side who are full of goals, Graham was on the receiving end of a barrage of attacks. Unlucky Brentford lost their centre-half Lawrence, with concussion and then Graham received a nasty cut above his ear which required stitches. Tranmere took full advantage, hoisting themselves to Fourth Division leadership with five goals.

FOOTBALL COMBINATION

Saturday, 8th November, 1975

LUTON TOWN 2, CRYSTAL PALACE 2
(Simon, Futcher).

Team: Judge, Mead, Buckley, Pollock, Carr, Price, Simon, Russell, R. Futcher, Seasman, Fuccillo. Substitute: Malcolm (for Russell, 78 mins).

Casual play in the first fifteen minutes almost certainly cost us a victory. During this period Palace scored twice through centre-forward Walsh, the second after an error by fifteen year old keeper, Alan Judge from Welwyn. However we fought back into the game with some good football. Simon reduced the arrears with a bravely headed goal after good play by Seasman. During a period of intense pressure before half-time, Fuccillo missed a fine chance and Futcher and Seasman were both denied obvious looking penalties. We kept at Palace in the second half and penned them in their own half. Mysteriously the referee disallowed a Fuccillo goal. In a rare Palace attack, Judge made a wonderful save, palming the ball away for a corner. True to form, the referee gave a goal kick. With twelve minutes to go, Malcolm came on for Russell, Buckley going to outside left. With minutes remaining, Ron Futcher, got our second goal

which was a fair reward for his efforts. We finished the superior side and in the end were denied a deserved victory.

MIDWEEK FOOTBALL LEAGUE CUP—FIRST ROUND

Monday, 10th November, 1975

LUTON TOWN 0, PETERBOROUGH U 1

Team: Judge, Mead, Malcolm, Pollock, Carr, Price, Ryan Jim, Spiring, Ron Futcher, Seasman, Fuccillo. Substitutes: Simon, Hill.

Having reached the Final of the Midweek League Cup last season, we were hoping to repeat this achievement by beating Peterborough in the first round. However, although we pressurized Peterborough for at least eighty of the ninety minutes, they scored a late goal which spelt our exit.

We were prevented on numerous occasions from scoring by a good display by the Peterborough 'keeper and by the goalpost and bar. Peterborough's goal came after a mistake by young 'keeper, Judge and we didn't really have time to get back into the game.

Although Judge was responsible for the goal—a mistake that is quite normal for a 15-year-old—he gave a good display during the rest of the game and we can expect to see something of this boy in the future.

The back four were never in trouble and they all did well. In midfield we were always in command and up front Ron Futcher fought well for the whole game but he did not always receive support from Seasman and Spiring, who although did not play badly, did not perform as well as could be expected.

Perhaps we can count ourselves unlucky at being knocked out in the first round as we had a rightful penalty appeal turned down by the referee.

F.A. YOUTH CUP

ARSENAL YOUTH

v

LUTON TOWN YOUTH

HIGHBURY MONDAY 17th NOVEMBER

Kick-off 7.30 pm

HATTERS
VOUCHER
1975-1976



HATTERS SHOP

SCARVES—KNITTED

SLIM COLLEGE	80p
STANDARD BAR	£1.20
STANDARD COLLEGE	£1.20

SCARVES—SILK

PRINTED TAFFETA	50p
PRINTED SATIN	60p
PRINTED DUAL TARTAN	60p

SCARVES—WOVEN

TARTAN	55p
----------------	-----

HATS

CRIMPLENE-CLUB	75p
TARTAN	85p
KNITTED BOB	75p

PENNANTS

MEDIUM P.V.C.	25p
LARGE P.V.C.	35p
COLLEGE	25p
PRESENTATION	50p

JEWELLERY

METAL BADGES	25p
KEY FOBS	25p
NECKLETTES	45p

JEWELLERY—continued

WRISTLETS	45p
BOW BADGES	30p
RINGS	35p
CUFF LINKS	£1.20

ROSETTES

STANDARD	15p
LARGE	40p

MISCELLANEOUS

AUTOGRAPH BOOKS	15p
CUSHIONS (SATIN)	50p
FLAGS (TAFFETA)	40p
SHIRT BADGES (IRON OR SEW ON)	15p
FINGER BADGES (IRON OR SEW ON)	15p
BLAZER BADGES (WOVEN)	45p
AWRISTA	20p
SHIELDS (PLASTIC)	35p
ORNAMENTAL PLAQUE	75p
GEAR LEVER KNOB	75p
LIGHTER	£3.20
TIES	£1.50
CLUB RECORD	50p
TEAM PHOTOS	5p

CAR STICKERS

LONG	15p
SQUARE	10p

KENILWORTH PATRONS CLUB

■ NEAHURST LIMITED Suppliers of Thermoplastic Polymers
London Road, Lower Stondon, Bedfordshire Telephone: Hitchin 814008

■ E. W. HUDSON HOLDINGS LIMITED
Union Street, Luton, Bedfordshire. Telephone: 30511

■ BEADLOW MANOR GOLF & COUNTRY CLUB
Silsoe, Near Shefford, Bedfordshire. Telephone: Silsoe 60800

■ EURO EXHAUST CENTRE, 233 Dunstable Road, Luton. Telephone: 38651
Branches Nationwide. Probably the world's best Exhaust service.

■ Mr and Mrs M. TALBOT, Stoke Mandeville, Buckinghamshire.

TRICENTROL COACHES

FULHAM v LUTON TOWN

Saturday 22nd November 1975

Depart The Square, Dunstable 12 noon Depart Maple Road, Luton 12.30 pm

Fare 85p

TOWN TRAVEL

FULHAM

v

LUTON TOWN

Saturday 22nd November 1975

Kick-off: 3.00 pm

CAR TRAVEL

Leave Luton via the Dunstable Road, towards the M1. Proceed South on the M1, leave the M1 at the junction with the A1. (Great North Way.) Proceed South-West on the North Circular Road (A406) until the junction with the Great West Road (A4). Continue along the A4 until the A219 Fulham Palace Road. Football ground is situated on the right hand side of the ground.



STAY IN TOWN TONIGHT AND VISIT

CÉSARS

FOR THE BEST IN TOWN

SPECIAL ATTRACTION

Thursday 20th November
& Friday 21st November

CHARLES
AZNAVOUR



We always win

We give that winning look to fruit, flowers, vegetables and turf. All purpose ECLIPSE semi organic garden manure promotes healthier, stronger growth in the garden all the season through. Team up with ECLIPSE and be a winner in your garden.

Humber Manures

PO Box 27 Stoneferry
Hull HU8 8DQ



Chevette. 'A star performer'

Motor w/e July 5.

Vauxhall  

TEAMS

LUTON TOWN

Colours: Shirts—Orange with a White and Navy Stripe. Shorts—Navy. Stockings—Orange.

- 1 KEITH BARBER
- 2 JOHN RYAN
- 3 BOBBY THOMSON
- 4 BRIAN CHAMBERS
- 5 JOHN FAULKNER
- 6 PAUL FUTCHER
- 7 JIMMY HUSBAND
- 8 ANDY KING
- 9 PETER ANDERSON
- 10 ALAN WEST
- 11 JOHN ASTON
- 12

OLDHAM ATHLETIC

Colours: Shirts—Blue. Shorts—Blue. Stockings—White.

- 1 CHRIS OGDEN
- 2 JIM BRANAGAN
- 3 MAURICE WHITTLE
- 4 RONNIE BLAIR
- 5 KEITH HICKS
- 6 DAVID HOLT
- 7 GRAHAM BELL
- 8 GEORGE JONES
- 9 IAN ROBINS
- 10 LES CHAPMAN
- 11 ALAN GROVES
- 12

SCORES

1	Bolton W v Carlisle U	
2	Bristol R v Plymouth A	
3	Charlton A v Sunderland	
4	Chelsea v Notts County	
5	Nottingham F v Bristol C	
6	Oxford U v Blackpool	
7	Portsmouth v Blackburn R	
8	West Bromwich A v Hull C	
9	York C v Fulham	
10	Birmingham C v Arsenal	
11	Burnley v Wolverhampton W	
12	Coventry C v Norwich C	
13	Derby C v West Ham U	
14	Ipswich T v Queen's Park R	
15	Manchester U v Aston Villa	
16	Middlesbrough v Leeds U	
17	Newcastle U v Liverpool	
18	Tottenham H v Stoke C	
19	Halifax T v Brighton & Hove A	
20	Peterborough U v Swindon T	
21	Wrexham v Crystal P	
22	Brentford v Watford	
23	Northampton T v Southport	

MAN IN THE MIDDLE

Referee:

Mr A. C. F. TURVEY, Basingstoke.

Served on the League line and Supplementary List before going on the full list in 1973. On the line for a European Cup match in Norway last year and refereed the Rothmans Isthmian and Athenian League Cup Finals last season. Chairman of the Rothmans Isthmian League Referees and Linesmen's Association and also Basingstoke Referees Society. A member of a local golf club. Married with two daughters he is a sales director.

Linesmen:

Mr C. A. GREGORY, Woking—Red Flag

Mr A. A. ISAACS, Barking—Orange Flag

FOOTBALL LEAGUE—DIVISION TWO

Teams	Home				Away				A	P		
	P	W	D	L	F	A	W	D			L	
Sunderland	16	9	0	0	23	4	4	2	3	6	7	24
Bolton	16	5	2	0	18	5	4	3	2	14	12	23
Bristol C	16	5	2	1	15	4	3	3	2	14	12	21
Notts Co	16	4	3	1	7	3	4	2	2	9	9	21
Bristol R	16	3	4	1	11	8	3	4	1	10	6	20
Fulham	15	3	4	1	11	4	4	1	2	9	7	19
S'thampton	15	8	0	0	22	4	0	2	5	7	17	18
Charlton	15	4	1	1	12	6	2	4	3	8	15	17
Oldham	16	6	2	1	16	10	0	3	4	6	14	17
West Brom	15	2	5	0	6	4	2	3	3	5	11	16
Luton T	16	4	3	1	12	4	1	2	5	6	11	15
Chelsea	16	3	4	0	11	5	1	3	5	7	16	15
Nott'm F	16	3	1	4	12	8	1	5	2	5	9	14
Blackburn	16	2	3	4	8	9	1	5	1	7	7	14
Orient	15	4	3	1	7	3	0	3	4	4	9	14
Plymouth	16	5	2	1	14	9	0	2	6	5	12	14
Hull City	16	3	3	3	9	9	2	1	4	6	9	14
Blackpool	16	3	3	2	11	12	1	2	5	3	9	13
Carlisle U	16	3	4	1	9	7	1	0	7	5	17	12
Oxford U	15	2	2	3	8	9	1	2	5	7	15	10
Portsmouth	16	0	5	3	5	9	1	1	6	5	17	8
York City	16	2	0	5	9	16	0	3	6	4	15	7