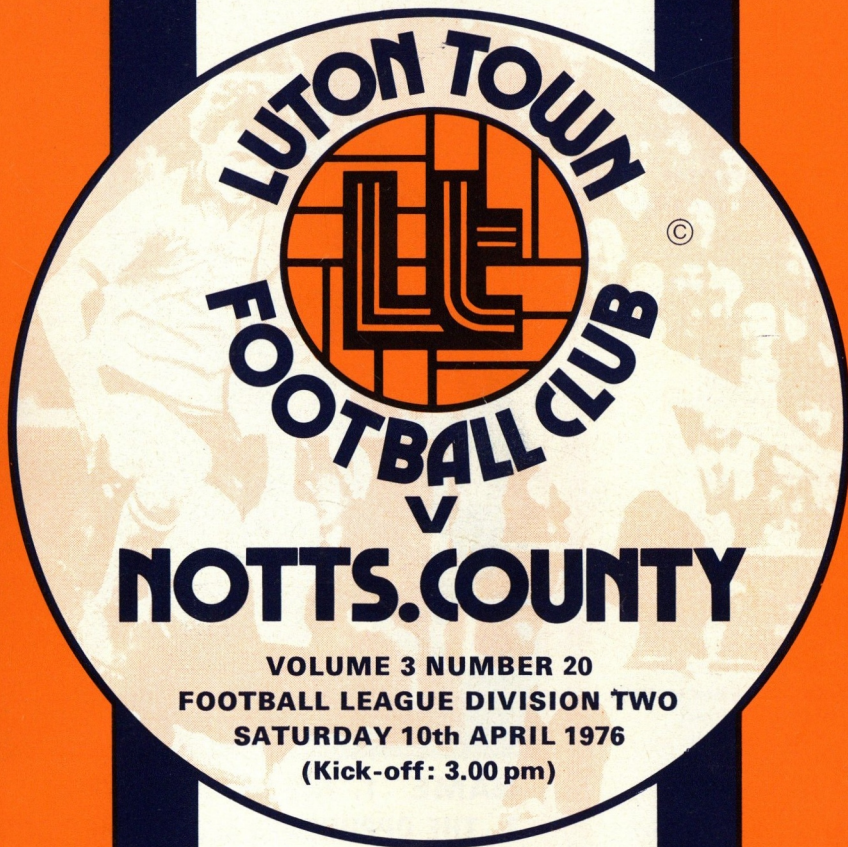


**WELCOME  
MAGPIES**



**OFFICIAL PROGRAMME  
PRICE: TEN PENCE**





**LUTON TOWN  
FOOTBALL AND  
ATHLETIC  
COMPANY LIMITED**

**KENILWORTH ROAD  
LUTON  
BEDFORDSHIRE  
Tel: 0582 411622/3/4/5**

**PRESIDENT:**  
T. HODGSON

**VICE-PRESIDENTS:**  
LORD HILL  
SIR REGINALD PEARSON, O.B.E.  
J. A. C. BAIN  
JOHN BRENT  
T. R. KEENS  
ERIC MORECAMBE

**CHAIRMAN:**  
DENIS MORTIMER

**DIRECTORS:**  
R. BANKS  
E. S. PEARSON  
H. RICHARDSON  
R. J. SMITH  
J. R. YATES

**MANAGER:**  
HARRY HASLAM

**SECRETARY:**  
DOUG LYGO, A.C.M.A.

**COMMERCIAL EXECUTIVE:**  
BRIAN MORGAN

**CHIEF COACH:**  
ROY McCROHAN

**ASSISTANT COACH:**  
DAVID PLEAT

**YOUTH TEAM COACH:**  
DANNY BERGARA

**PHYSIOTHERAPIST:**  
REG GAME

**POOLS MANAGER:**  
MIKE HARDWICKE

**ASSISTANT SECRETARY  
& TICKET MANAGER:**  
JOHN WILKINSON

**MEDICAL OFFICERS:**  
Dr P. J. BURROWS, M.A., M.B.,  
B. Chir. (Cantab), D. (Obst), R.C.O.G.  
Dr A. M. D. MITCHELL, B.A., M.B.,  
B.Chir. (Cantab), D. (Obst), R.C.O.G.

## COMPETITION CORNER ..



**WIN TWO FREE TICKETS  
FOR THE NEXT GAME.**



**NAME 1. THE LUTON PLAYER . .  
2. THE OPPONENTS and 3. THE SCORE**

1..... 2..... 3.....

Name .....

Address .....

.....

*Send your entries to: COMPETITION CORNER,  
Programme Editor, Luton Town F.C.  
Kenilworth Road, Luton no later than FRIDAY 16th APRIL.*

# LUTON TOWN FOOTBALL CLUB

are pleased to welcome to this match . . .

Mr D. BOUSTRED—Whitbreads (London) Ltd

Mr J. DAVISON—R. L. Davison & Co Ltd

Reverend W. GOWLAND—Principal, Luton Industrial College

Mr J. LAGDEN—Luton Centenary Year Organiser

Mr J. HERSCHEL—Thistle Hotels

Mr V. GREEN—V. G. Green & Sons

Mr R. C. LARKINSON—R. C. Larkinson Ltd

Mr J. M. REYNOLDS—Woolco Department Store

Mr M. GODDEN—Godden Butchers Ltd

Mr & Mrs R. NORTHAM—Laporte Chemicals

Mr J. WALKER—Camden Motors Ltd

Mr GOATES & Mr LAVER—Computer Machine Co

Mr S. CLUSKEY—Irish Tourist Board

Mr G. HOY—Froud & Partners Ltd

Mr G. BROWN & Mr F. SHORTLAND—V. S. Engineering Ltd, Luton

Mr R. MORTIMER—British Leyland (UK) Ltd

Mr BERT KING

The Directors, Players and Staff of Luton Town Football Club hope that you, and your guests, will enjoy watching today's game and look forward to meeting you again



# FACTS & FIGURES 75/76

Date	Opponents	V	F	A	Gate	7	2	3	4	5	6	7	8	9	10	11	Substitute	
75/76																		
Aug 16	Hull City	H	2	0	10,289	Barber	Ryan John	Buckley	Anderson	Faulkner	Litt	King 1	Alston	Fletcher R 1	West	Aston	Sping	
17	West Bromwich Albion	A	3	0	11,275	Barber	Ryan John	Buckley	Anderson	Faulkner	Fletcher P	King	Alston	Fletcher R 1	West	Aston	Chambers	
18	Chelsea	A	3	0	19,024	Barber	Ryan John	Buckley	Anderson	Faulkner	Fletcher P	King	Alston	Fletcher R 1	West	Aston	Chambers	
20	Portsmouth	A	2	0	9,835	Barber	Ryan John	Buckley	Anderson	Faulkner	Fletcher P	King	Alston	Fletcher R 1	West	Aston	Chambers	
21	Darlington (L.C.—2)	A	1	2	6,501	Barber	Ryan John	Buckley	Anderson	Faulkner	Fletcher P	King	Alston	Fletcher R 1	West	Aston	Chambers	
13	Bolton Wanderers	A	0	1	6,901	Barber	Ryan John	Buckley	Anderson	Faulkner	Fletcher P	King	Alston	Fletcher R 1	West	Aston	Chambers	
14	Sheff Wed	A	0	1	11,772	Barber	Ryan John	Buckley	Anderson	Faulkner	Fletcher P	King	Alston	Fletcher R 1	West	Aston	Chambers	
24	Plymouth Argyle	H	1	1	9,228	Barber	Ryan John	Buckley	Anderson	Faulkner	Fletcher P	King	Alston	Fletcher R 1	West	Aston	Chambers	
27	Blackburn Rovers	H	1	1	8,453	Barber	Ryan John	Buckley	Anderson	Faulkner	Fletcher P	King	Alston	Fletcher R 1	West	Aston	Chambers	
Oct 4	Blackpool	A	2	3	7,645	Barber	Ryan John	Buckley	Anderson	Faulkner	Fletcher P	King	Alston	Fletcher R 1	West	Aston	Chambers	
11	Canterbury United	A	1	0	6,823	Barber	Ryan John	Buckley	Anderson	Faulkner	Fletcher P	King	Alston	Fletcher R 1	West	Aston	Chambers	
18	Nottingham Forest	A	0	0	14,986	Barber	Ryan John	Buckley	Anderson	Faulkner	Fletcher P	King	Alston	Fletcher R 1	West	Aston	Chambers	
21	Sunderland	A	0	2	28,338	Barber	Ryan John	Buckley	Anderson	Faulkner	Fletcher P	King	Alston	Fletcher R 1	West	Aston	Chambers	
Nov 1	Bristol City	H	4	0	11,448	Barber	Ryan John	Buckley	Anderson	Faulkner	Fletcher P	King	Alston	Fletcher R 1	West	Aston	Chambers	
8	Southampton	H	4	3	13,885	Barber	Ryan John	Buckley	Anderson	Faulkner	Fletcher P	King	Alston	Fletcher R 1	West	Aston	Chambers	
15	Oldham Athletic	H	2	3	8,237	Barber	Ryan John	Buckley	Anderson	Faulkner	Fletcher P	King	Alston	Fletcher R 1	West	Aston	Chambers	
22	Fulham (F.A. Cup—1)	H	0	2	9,628	Barber	Ryan John	Buckley	Anderson	Faulkner	Fletcher P	King	Alston	Fletcher R 1	West	Aston	Chambers	
29	Charlton Athletic	H	1	0	7,897	Barber	Ryan John	Buckley	Anderson	Faulkner	Fletcher P	King	Alston	Fletcher R 1	West	Aston	Chambers	
Dec 3	Charlton Athletic	A	5	1	8,705	Barber	Ryan John	Buckley	Anderson	Faulkner	Fletcher P	King	Alston	Fletcher R 1	West	Aston	Chambers	
13	W. B. Albion (F.A.C.—2)	H	2	1	10,203	Barber	Ryan John	Buckley	Anderson	Faulkner	Fletcher P	King	Alston	Fletcher R 1	West	Aston	Chambers	
20	Hull City	A	2	1	5,449	Barber	Ryan John	Buckley	Anderson	Faulkner	Fletcher P	King	Alston	Fletcher R 1	West	Aston	Chambers	
26	Oxford United	H	3	2	13,101	Barber	Ryan John	Buckley	Anderson	Faulkner	Fletcher P	King	Alston	Fletcher R 1	West	Aston	Chambers	
27	Bristol Rovers	A	1	0	11,044	Barber	Ryan John	Buckley	Anderson	Faulkner	Fletcher P	King	Alston	Fletcher R 1	West	Aston	Chambers	
Jan 3	Blackburn—F.A. Cup—3	H	2	0	11,195	Barber	Ryan John	Buckley	Anderson	Faulkner	Fletcher P	King	Alston	Fletcher R 1	West	Aston	Chambers	
17	Portsmouth	H	3	3	10,464	Barber	Ryan John	Buckley	Anderson	Faulkner	Fletcher P	King	Alston	Fletcher R 1	West	Aston	Chambers	
24	Norwich—F.A. Cup—4	A	0	2	24,328	Barber	Ryan John	Buckley	Anderson	Faulkner	Fletcher P	King	Alston	Fletcher R 1	West	Aston	Chambers	
28	Bolton Wanderers	A	0	3	21,358	Barber	Ryan John	Buckley	Anderson	Faulkner	Fletcher P	King	Alston	Fletcher R 1	West	Aston	Chambers	
31	Nottingham Forest	H	1	1	8,503	Barber	Ryan John	Buckley	Anderson	Faulkner	Fletcher P	King	Alston	Fletcher R 1	West	Aston	Chambers	
Feb 7	York City	A	3	2	3,507	Barber	Ryan John	Buckley	Anderson	Faulkner	Fletcher P	King	Alston	Fletcher R 1	West	Aston	Chambers	
13	Oldham Athletic	A	1	1	8,808	Barber	Ryan John	Buckley	Anderson	Faulkner	Fletcher P	King	Alston	Fletcher R 1	West	Aston	Chambers	
21	Plymouth Argyle	A	0	3	13,927	Barber	Ryan John	Buckley	Anderson	Faulkner	Fletcher P	King	Alston	Fletcher R 1	West	Aston	Chambers	
24	Sunderland	H	2	0	15,338	Barber	Ryan John	Buckley	Anderson	Faulkner	Fletcher P	King	Alston	Fletcher R 1	West	Aston	Chambers	
Mar 2	Southampton	H	1	0	10,737	Barber	Ryan John	Buckley	Anderson	Faulkner	Fletcher P	King	Alston	Fletcher R 1	West	Aston	Chambers	
6	Bristol City	H	0	3	15,170	Barber	Ryan John	Buckley	Anderson	Faulkner	Fletcher P	King	Alston	Fletcher R 1	West	Aston	Chambers	
13	Carlisle United	H	3	0	8,865	Barber	Ryan John	Buckley	Anderson	Faulkner	Fletcher P	King	Alston	Fletcher R 1	West	Aston	Chambers	
20	Oxford	A	0	3	5,544	Barber	Ryan John	Buckley	Anderson	Faulkner	Fletcher P	King	Alston	Fletcher R 1	West	Aston	Chambers	
27	Charlton Athletic	H	1	1	9,947	Barber	Ryan John	Buckley	Anderson	Faulkner	Fletcher P	King	Alston	Fletcher R 1	West	Aston	Chambers	
Apr 10	Blackburn R	A	0	3	7,895	Barber	Ryan John	Buckley	Anderson	Faulkner	Fletcher P	King	Alston	Fletcher R 1	West	Aston	Chambers	
16	Chelsea	A	0	3														
17	Oxford United	A	0	3														
19	Bristol Rovers	H	1	0														
24	Blackpool	H	1	0														
May 1	F.A. Cup Final	W																

\*Player substituted  
 †Own goal  
 ‡After extra time

## LUTON TOWN V BRISTOL ROV. MONDAY 19th APRIL 1976 KICK-OFF: 3.00 pm

NEXT HOME  
 DIVISION TWO  
 GAME  
 AT  
 KENILWORTH  
 ROAD

# FOOTBALL COMBINATION 75/76

Date	Opponents	V	F	A	1	2	3	4	5	6	7	8	9	10	11	Substitute
1975																
Aug 16	Chelsea	A	2	2	Horn	Pollock	Thomson	Chambers	Carr	Malcolm	Simon	Husband	Seaman	Fucillo	Hindson	Mead
20	Oxford United	H	2	0	Horn	Thomson	Chambers	Chambers	Carr	Malcolm	Simon	Husband	Seaman	Fucillo	Hindson	Simon
23	Bournemouth	A	2	0	Horn	Thomson	Chambers	Chambers	Carr	Malcolm	Simon	Husband	Seaman	Fucillo	Hindson	Simon
30	Bournemouth	A	2	0	Horn	Thomson	Chambers	Chambers	Carr	Malcolm	Simon	Husband	Seaman	Fucillo	Hindson	Simon
Sept 2	Southampton	H	2	2	Horn	Pollock	Thomson	Chambers	Carr	Malcolm	Simon	Husband	Seaman	Fucillo	Hindson	Simon
6	Wrexham	A	0	3	Horn	Pollock	Thomson	Chambers	Carr	Malcolm	Simon	Husband	Seaman	Fucillo	Hindson	Simon
13	Wrexham	A	0	3	Horn	Pollock	Thomson	Chambers	Carr	Malcolm	Simon	Husband	Seaman	Fucillo	Hindson	Simon
27	Plymouth Argyle	A	3	2	Knight	Mead	Thomson	Pollock	Carr	Malcolm	Simon	Husband	Seaman	Fucillo	Hindson	Simon
Oct 1	Tottenham Hotspur	H	2	1	Horn	Mead	Thomson	Pollock	Carr	Malcolm	Simon	Husband	Seaman	Fucillo	Hindson	Simon
4	Oxford United	H	3	0	Horn	Mead	Thomson	Pollock	Carr	Malcolm	Simon	Husband	Seaman	Fucillo	Hindson	Simon
11	Swindon Town	H	1	0	Horn	Mead	Thomson	Pollock	Carr	Malcolm	Simon	Husband	Seaman	Fucillo	Hindson	Simon
18	Leicester City	H	1	2	Horn	Mead	Buckley	Pollock	Carr	Malcolm	Simon	Husband	Seaman	Fucillo	Hindson	Simon
18	Leicester City	H	1	2	Horn	Mead	Buckley	Pollock	Carr	Malcolm	Simon	Husband	Seaman	Fucillo	Hindson	Simon
25	Bristol City	H	0	0	Horn	Mead	Buckley	Pollock	Carr	Malcolm	Simon	Husband	Seaman	Fucillo	Hindson	Simon
Nov 1	Queen's Park Rangers	A	1	2	Knight	Mead	Buckley	Pollock	Carr	Malcolm	Simon	Husband	Seaman	Fucillo	Hindson	Simon
8	Crystal Palace	A	2	0	Roberts	Mead	Buckley	Pollock	Carr	Malcolm	Simon	Husband	Seaman	Fucillo	Hindson	Simon
15	Fulham	A	6	0	Knight	Mead	Buckley	Pollock	Carr	Malcolm	Simon	Husband	Seaman	Fucillo	Hindson	Simon
22	Leicester City	H	0	2	Knight	Mead	Buckley	Pollock	Carr	Malcolm	Simon	Husband	Seaman	Fucillo	Hindson	Simon
Dec 1	Ipswich Town	H	0	1	Knight	Mead	Thomson	Pollock	Carr	Malcolm	Simon	Husband	Seaman	Fucillo	Hindson	Simon
8	Reading	A	2	0	Knight	Mead	Thomson	Pollock	Carr	Malcolm	Simon	Husband	Seaman	Fucillo	Hindson	Simon
13	Reading	A	1	0	Knight	Mead	Thomson	Pollock	Carr	Malcolm	Simon	Husband	Seaman	Fucillo	Hindson	Simon
20	Chelsea	A	1	3	Knight	Mead	Thomson	Pollock	Carr	Malcolm	Simon	Husband	Seaman	Fucillo	Hindson	Simon
27	Cardiff City	H	1	2	Knight	Mead	Thomson	Pollock	Carr	Malcolm	Simon	Husband	Seaman	Fucillo	Hindson	Simon
1976																
Jan 10	Norwich City	H	0	3	Knight	Mead	Thomson	Pollock	Carr	Malcolm	Simon	Husband	Seaman	Fucillo	Hindson	Carr
17	Birmingham City	A	0	3	Knight	Mead	Thomson	Pollock	Carr	Malcolm	Simon	Husband	Seaman	Fucillo	Hindson	Carr
24	Bournemouth	H	4	1	Knight	Mead	Thomson	Pollock	Carr	Malcolm	Simon	Husband	Seaman	Fucillo	Hindson	Carr
31	Bournemouth	H	4	1	Knight	Mead	Thomson	Pollock	Carr	Malcolm	Simon	Husband	Seaman	Fucillo	Hindson	Carr
Feb 3	Crystal Palace	A	3	4	Knight	Mead	Carr	Smith	Jones	Malcolm	Simon	Husband	Seaman	Fucillo	Hindson	Carr
10	Fulham	H	3	2	Knight	Mead	Carr	Smith	Jones	Malcolm	Simon	Husband	Seaman	Fucillo	Hindson	Carr
21	Southampton	H	3	2	Knight	Mead	Carr	Smith	Jones	Malcolm	Simon	Husband	Seaman	Fucillo	Hindson	Carr
Mar 6	Queen's Park Rangers	H	4	2	Knight	Mead	Carr	Smith	Jones	Malcolm	Simon	Husband	Seaman	Fucillo	Hindson	Carr
13	Swindon Town	A	4	2	Knight	Mead	Carr	Smith	Jones	Malcolm	Simon	Husband	Seaman	Fucillo	Hindson	Carr
17	Tottenham Hotspur	A	0	3	Knight	Mead	Carr	Smith	Jones	Malcolm	Simon	Husband	Seaman	Fucillo	Hindson	Carr
20	Ipswich Town	A	0	2	Knight	Mead	Carr	Smith	Jones	Malcolm	Simon	Husband	Seaman	Fucillo	Hindson	Carr
31	Reading	H	4	0	Knight	Mead	Carr	Smith	Jones	Malcolm	Simon	Husband	Seaman	Fucillo	Hindson	Carr
Apr 3	Plymouth Argyle	H	3	0	Knight	Mead	Carr	Morgan	Jones	Malcolm	Simon	Husband	Seaman	Fucillo	Hindson	Carr
6	Bristol Rovers	A	0	3	Knight	Mead	Carr	Morgan	Jones	Malcolm	Simon	Husband	Seaman	Fucillo	Hindson	Carr
10	Birmingham City	A	0	3	Knight	Mead	Carr									



# LUTON FORWARD

## 1976-77 SEASON

Luton Town Football Club are planning to make their 1976-77 season a memorable one for both the players and spectators, and will be carrying out a number of exciting projects. These projects offer all Companies the use of a marvellous promotional medium which gains the attention of a regular and enthusiastic audience as well as the many millions who watch the televised matches; there have been nine televised matches featuring Luton Town F.C. this season.

### MATCH SPONSORSHIP

This for instance, gives you:

- 1—The use of the ground to display your range of products.
- 2—The use of available publicity sites throughout the ground . . . especially effective at the televised matches.
- 3—Seats in the Directors Box.
- 4—The use of the Kenilworth Suite.
- 5—The use of the public address system.
- 6—Freedom to distribute literature around the ground.
- 7—Space in the official programme.
- 8—Specially reserved parking spaces within the ground.
- 9—A reciprocal visit by one of the Luton Town players or management team.

Amongst those Companies who have benefited from Match Sponsorships are: Avdel Ltd, Nabisco Foods, Granada TV Rentals and Vauxhall Motors.

### PROGRAMME ADVERTISING

One of the best ways to allocate your advertising budget, as 60% of the fans *buy and read* a copy at every match. Taken together with the special quantity discount rates a small amount of money can reap great benefits. The rates are as follows:

Rates per single insertion	Full Page	Half Page	Quarter Page	Eighth Page
1 to 5 insertions.....	£80.00	£45.00	£24.00	£12.50
6 to 12 insertions.....	£70.00	£40.00	£21.00	£11.00
13 and over insertions.....	£60.00	£35.00	£18.00	£9.50

### PROGRAMME SPONSORSHIP

This means the very valuable front page will be adapted to include a Company name and message.

### KEY PUBLICITY SITES

Although located around the ground they are in short supply and vary in cost dependent on siting, but are very good value when you take into account the number of TV screenings Luton Town F.C. have had during this past season. In addition to these ground perimeter signs a number of others are shortly to be provided in key crowd areas of the Stadium. As these will be strictly limited early application is advised.

### PLAYER SPONSORSHIP

This is a new idea and it is envisaged that a close relationship between player and sponsor will be encouraged.

The Stadium also offers the facility to stage Exhibitions, Demonstrations and other entertainment on a large or small scale. If you wish to know more of the plans for 1976-77 season telephone Luton 416711, extension 39 or Luton 31858, or write to:

BRIAN MORGAN, PROMOTIONS EXECUTIVE, LUTON TOWN F.C.

JIMMY  
HUSBAND





# WELCOME TO



Back row, left to right: David McVay, Kevin Randall (now Mansfield), Pedro Richards, Les Bradd, Arthur Mann. Centre Row: Ray O'Brien, Steve Carter, Eric McManus, Frank Lane, David Needham, Ian Bolton. Front Row: Jack Wheeler (trainer), Eric Probert, Bill Brindley, Ron Fenton (manager), Brian Stubbs, Ian Scanlon, Mick Vinter.

**ERIC McMANUS, Goalkeeper.** Eric left Coleraine to sign for Coventry City in 1969 but he got only rare chances in their senior side. County signed him in 1972 and for the past three years he has held the first-team spot. League record: Coventry 6aps, County 96aps.

**JOHN BRINDLEY, Defender.** John got his chance with neighbouring Nottingham Forest in 1965-66 but didn't get a regular game until switching to County in May, 1970. John is a former England Schoolboy and Youth international. League record: Forest 8(8)aps, 1gl, County 221(2)aps.

**PEDRO RICHARDS, Defender.** Young Pedro made a tremendous impression when introduced to the side at left-back last season. This term he has proved his versatility by holding the right-back spot for much of the season. League record: County 32aps.

**DAVID NEEDHAM, Defender.** Though only 26, David is now the club's longest-serving player. He was only 16 when he made his debut in 1966 and he has been a permanent member of the defence for the past eight seasons. League record: County 380(1)aps, 25gls.

**BRIAN STUBBS, Defender.** Brian joined County from non-League Loughborough Town in 1968 and won an immediate first-team place which he has held ever

since. He is often to be found in the opposite penalty area for free-kicks and corners—he has netted twice this season. League record: County 269(1)aps, 17gls.

**RAY O'BRIEN, Defender.** County paid a £22,000 fee to Manchester United for Ray in March, 1974, and he played in all their closing matches of that season. A former Irish Youth and Amateur international, Ray had joined United from Shelbourne a year earlier but did not get into the League team. Ray won his first full cap for Eire a couple of weeks ago. League record: County 76aps, 2gls.

**ARTHUR MANN, Midfield.** When Manchester City bought Arthur from Hearts in 1968 the £65,000 fee was a club record, beaten only with the arrival of £200,000 Rodney Marsh. It was intended he should be the successor to Tony Book but Mann didn't get a lot of joy at Maine Road. Arthur spent a short period on loan to Blackpool and joined County in 1972, since when he has switched from defence to midfield. League record: Hearts 32aps, City 32(3)aps, Blackpool 3aps, County 130(4)aps, 9gls.

**ERIC PROBERT, Midfield.** County paid a then club record £30,000 fee to sign Eric from Burnley in 1973—£5,000 more than the previous record set 23 years earlier for the transfer of Leon Leuty. Eric made his Burnley



IAN SCANLON



RON FENTON



LES BRADD

debut at the age of 16 in 1968-69. Eric is a former England Youth international. League record: Burnley 63(5)aps, 11gls, County 104aps, 11gls.

**MICK VINTER, Midfield.** Notts signed Mick from Boston United as a 17-year-old in 1972 and he was soon given his chance in the first-team. Though not yet a regular member of the side, he is often named as substitute. League record: County 23(27)aps, 11gls.

**IAN BOLTON, Midfield.** Ian joined County from junior football and made his first senior appearance as substitute in 1971-72. He had to wait until 1973-74 for a further chance when he stayed for several games. Now he is a fairly regular member of the side. League record: County 58(6)aps, 4gls.

**DAVID McVAY, Midfield.** David made a lightning rise, making his League bow for County at Crystal Palace on the opening day of the 1973-74 season only a few weeks after leaving a local comprehensive school. Initially he played in defence but later came in at midfield. League record: County 60(3)aps, 2gls.

**STEVE CARTER, Midfield.** Steve has tended to slip out of the reckoning in recent weeks but he is still challenging strongly for one of the midfield positions. While with Manchester City he played a few First Division games and soon won a regular place after signing for Notts in 1972. League record: City 4(2)aps, 2gls, County 100(11)aps, 7gls.

**JOHN SIMS, Striker.** John has proved a big success since joining Notts from Derby County a few weeks ago. Though he managed only a few games in Derby's First Division side, John had gained previous League experience while on loan to Luton, Oxford United and Colchester. He has scored six goals for Notts. League record: Derby 2(1)aps, Luton 3aps, 1gl, Oxford 6(1)aps, 1gl, Colchester 2aps, County 12aps, 6gls.

**LES BRADD, Striker.** Les is currently top scorer with 17 goals, hoping to finish in front for the third time since

joining the club from Rotherham in 1967. Les scored both goals which knocked Everton out of the League Cup this season. League record: Rotherham 3aps, County 310(14)aps, 99gls.

**IAN SCANLON, Striker.** Ian, top scorer with 14 goals last season, is once again challenging for the top spot with 13 to his credit. Notts signed him from East Stirling for £10,000 in 1972.

## RONNIE FENTON (Notts County's Manager)

Ronnie Fenton, who spent most of his career in the First Division, was hoping to cap his first season as a manager by leading Notts County into the top section. Though it now seems he may not achieve that ambition this year, he can look back with pride on his first few months in the Meadow Lane hot seat.

Mr Fenton has maintained the momentum established by his predecessor Jimmy Sirrel and kept his players sharp and aware throughout a gruelling promotion-chasing campaign.

He began his career with Burnley, a club now beginning to challenge West Ham United for breeding future managers. After making his League debut in 1960-61, he made a dozen or so first-team appearances before moving onto West Bromwich Albion in 1962.

It was at The Hawthorns that he really began to establish himself and he held his place for two seasons before he was signed by Birmingham City. He spent almost four years at St. Andrews and then dropped down the scale to sign for Brentford.

Notts County signed him as player/coach in 1970, his brief being to bring along the youngsters in the reserve-teams. A knee injury forced him to stop playing in 1973 when he was appointed reserve-team coach.

In October last year he was promoted to assistant-manager and it was only a matter of days before Mr Sirrel's departure opened the way for him

# MAGPIES







read  
**Roger Duckworth's**  
 report · every Sat

**LUTON 1**  
**CHARLTON 1**  
 at Kenilworth Road  
 Saturday 27th March 1976

1. Acrobatics from Ronnie Futcher.
2. Andy King puts the pressure on goalkeeper Jess Wood.

Action Pictures: Keith Dobney (*Evening Post*)

**WIN A £40**  
**IRISH HOLIDAY**  
**VOUCHER**  
**NEXT MATCH**



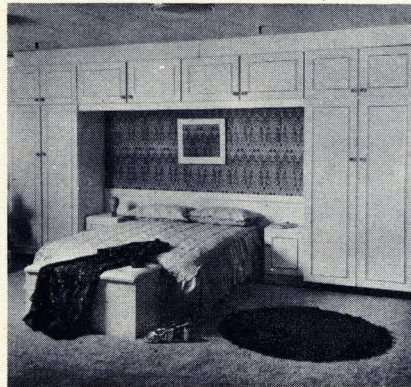


# WEST LUTON CONSTRUCTION LTD

**SHOPFITTING CONTRACTORS**

**OFFERS—Best Prices  
Best Workmanship—in the  
shortest possible times.**

Telephone:  
0582 35727



**WALLSPAN  
BEDROOMS**



*a new concept in fitted bedroom furniture*

## Where to view Wallspan

Head Office (Sales) and Showroom  
17/19 Queens Road  
Watford, Herts  
Telephone Watford 38388 Telex 923250

442 High Road  
Wembley, Middx  
Telephone 01-903 4956

733/735 High Road  
Finchley  
Telephone 01-446 3317

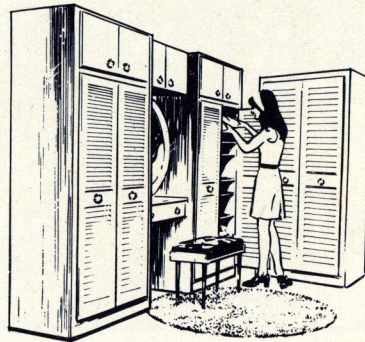
1 Exchange Buildings, High Street  
Barnet, Herts  
Telephone 01-440 4947

Factory and Showroom  
Industrial Estate, Maulden Road  
Flitwick, Beds  
Telephone Flitwick 3621 Telex 825175

217 Uxbridge Road  
Ealing  
Telephone 01-579 6747

47 New Bedford Road  
Luton, Beds  
Telephone Luton 23015

6 Corporation Street  
High Wycombe, Bucks  
Telephone High Wycombe 36761



### FOR ALL TYPES OF FUND RAISING TICKETS—

Contact Tom Bickerstaff at:

Hazelbury Crescent  
Luton, Beds.

**LUTON  
SPORTS  
PRESS LTD.**



Tel:  
LUTON  
28757/8



Get into the First Division with Luton  
Town. For quality meat and personal  
service, deal with:

**DEREK BUNKER**  
(Butcher to the deep-freeze owner)  
6 DUNSTABLE ROAD  
TILSWORTH, BEDS.

Obtain the advantage of his 30 year's experience in  
the trade. Nothing but the best. Home-made pork  
sausages and beefburgers a speciality.

For details, ring Hockliffe 509.

# ROBINSON METALWORK (LUTON) LTD.

CALEB CLOSE — DUNSTABLE ROAD — LUTON

would like to wish Harry and the Players every success for the future

## JOHN HOOPER & CO. (BUILDERS)

30 CARDIGAN STREET, LUTON Tel: 412525

Contractors to Bedfordshire Health  
Authorities & the Ministry of Defence.

WE OFFER A PROMPT AND  
EFFICIENT SERVICE

Good luck to Harry and the Lads

## Bawdy Feast Nites at The Sandhouse Inn



The medieval nite everyone's  
talking about.

Every Wednesday

THE SANDHOUSE INN  
WATLING STREET  
Nr. WOBURN

Tel: Heath and Reach 396 or 757



Travel by coach to  
all 'Town' away matches,  
both Cup and League.

# Tricentrol

Details in 'Town Travel' or from  
Travel House, Leagrave Road  
Luton.  
Telephone:  
29171.

**J.T. DISPLAYS**



2 LYE TRADING ESTATE,  
137-141 OLD BEDFORD ROAD, LUTON, Beds.

- SILK SCREEN PRINTING ● SIGN WRITING
- GRAPHIC DESIGNING ● SIGNS
- SELF ADHESIVES

THE MOST COMPREHENSIVE  
DISPLAY FIRM IN LUTON

## E. W. HUDSON GROUP OF COMPANIES

6-8 UNION STREET, LUTON Telephone: 30511 (5 lines)

The complete service in engineering: DESIGN—FITTING—FABRICATING  
and MACHINING at the following factories:

E. W. HUDSON (Luton) LTD  
E. W. HUDSON (Loughborough) LTD

WHARTON ENGINEERING (Elstree) LTD  
EVERTON ENGINEERING (N. Ireland)



# TOWN CHAT

Football Combination, Saturday, 3rd April  
PLYMOUTH ARGYLE 0, LUTON TOWN 3

Scorers: Hill, Morgan, Jones

Team: Knight; Mead, Carr; Morgan, Jones, Malcolm; Simon, Smith, Ingram, Hill, Wassell.  
Substitute Bergara for Wassell.

This must rank as one of our most meritorious performances of the season. With no less than six 16-year-old players and without any players of first-team experience the boys gave an exciting 90-minute display of flair and aggression. After only eight minutes the dangerous Wassell (an amateur playing his third Combination game) crossed the ball from the bye-line at speed but careered onto the terracing. He was immediately replaced by Bergara, our third-team coach who was named, as the only possible substitute, the previous day. This follows the drastic pruning and transferring of players during the last fortnight.

In midfield Smith, Morgan and Hill restricted space intelligently, allowing their Plymouth counterparts Vassallo, Rioch and Horswill no time to settle. With young Ingram moving sharply up front, and Bergara showing all his skills we gradually gained the ascendancy. Hill scored a deserved goal with a fine shot just before half-time. Determined back play and sensible use of the ball kept our lads on top and Morgan after a magnificent move, and Jones with a soaring header demolished Plymouth with further goals.

Congratulations are due to every player for giving a few hundred spectators much more to excite them than the thrills of Aintree, Cup Semi-Finals or even first-team disappointment at Blackburn.

**WIN A £40  
IRISH HOLIDAY  
VOUCHER  
NEXT MATCH**

Wassell dislocated his shoulder in those first minutes. Football of this standard by such youth makes thoughts of a cash crisis a million miles away.

DAVID PLEAT (Assistant Coach)

The date of the Youth Cup Final has now been changed to Thursday, 29th April (Kick-off: 7-30pm), at the home of Stevenage F.C. Why not come along and give your support to the Town footballing youth of tomorrow.

Last Monday we travelled to Cambridge and after being 1-0 down to a harsh penalty decision, the lads really worked hard and we came out winners with goals from Donnelly and Ingram. This result gives us a great chance to clinch the Championship, needing only five points from the last four games.

During the past fortnight, many players have left the Club to further their careers elsewhere, and this has meant with playing five games in six days, we have been struggling to field our best side. But with your continued support and the lads doing their very best we hope to celebrate the Cup and League double at the end of the season.

DANNY BERGARA (Youth-team Coach)

## FOOTBALL COMBINATION TABLE

As at Monday, 29th March (not inclusive)

Teams	P	W	D	L	F	A	P
Birmingham City	37	21	10	6	46	20	52
Ipswich Town	36	20	10	6	72	40	50
Chelsea	37	20	8	9	78	44	48
Southampton	37	19	10	8	65	41	48
Bristol City	36	18	10	8	65	33	46
West Ham United	33	21	3	9	80	37	45
<b>Luton Town</b>	<b>34</b>	<b>18</b>	<b>5</b>	<b>11</b>	<b>64</b>	<b>45</b>	<b>41</b>
Plymouth Argyle	36	15	11	10	45	44	41
Arsenal	34	14	9	11	44	35	37
Queens Park Rangers	38	13	10	15	56	58	36
Fulham	37	10	16	11	46	49	36
Tottenham Hotspur	35	12	11	12	60	51	35
Cardiff City	35	13	7	15	43	50	33
Reading	37	12	7	18	42	69	31
Leicester City	35	11	8	16	50	48	30
Norwich City	34	11	8	15	34	45	30
Crystal Palace	36	9	11	16	41	58	29
Orient	35	6	15	14	38	58	27
Swindon Town	36	9	7	20	30	68	25
A. F. C. Bournemouth	35	5	14	16	34	49	24
Oxford United	31	8	7	16	30	55	23
Bristol Rovers	34	5	3	26	37	103	13

# HATTERS SHOP

## SCARVES—KNITTED

SLIM COLLEGE .. .. .	80p
STANDARD BAR .. .. .	£1.20
STANDARD COLLEGE .. .. .	£1.20

## SCARVES—SILK

PRINTED TAFFETA .. .. .	50p
PRINTED SATIN .. .. .	60p
PRINTED DUAL TARTAN .. .. .	60p

## SCARVES—WOVEN

TARTAN .. .. .	55p
----------------	-----

## HATS

CRIMPLENE-CLUB .. .. .	75p
TARTAN .. .. .	85p
KNITTED BOB .. .. .	75p

## PENNANTS

MEDIUM P.V.C. .. .. .	25p
LARGE P.V.C. .. .. .	35p
COLLEGE .. .. .	25p
PRESENTATION .. .. .	50p

## JEWELLERY

METAL BADGES .. .. .	25p
KEY FOBS .. .. .	25p
NECKLETTES .. .. .	45p

## JEWELLERY—continued

WRISTLETS .. .. .	45p
BOW BADGES .. .. .	30p
RINGS .. .. .	35p
CUFF LINKS .. .. .	£1.20

## ROSETTES

STANDARD .. .. .	15p
LARGE .. .. .	40p

## MISCELLANEOUS

AUTOGRAPH BOOKS .. .. .	15p
CUSHIONS (SATIN) .. .. .	50p
FLAGS (TAFFETA) .. .. .	40p
SHIRT BADGES (IRON OR SEW ON)	15p
FINGER BADGES (IRON OR SEW ON)	15p
BLAZER BADGES (WOVEN) .. .. .	45p
AWRISTA .. .. .	20p
SHIELDS (PLASTIC) .. .. .	35p
ORNAMENTAL PLAQUE .. .. .	75p
GEAR LEVER KNOB .. .. .	75p
LIGHTER .. .. .	£3.20
TIES .. .. .	£1.50
CLUB RECORD .. .. .	50p
TEAM PHOTOS .. .. .	5p

## CAR STICKERS

LONG .. .. .	15p
SQUARE .. .. .	10p

## THE FRIENDS OF LUTON TOWN FOOTBALL CLUB

working to raise money to save League football in Luton

### NEED THE HELP OF SUPPORTERS

Can you spare just a few minutes a week to help your Club survive? It's nothing strenuous, and we can't afford to pay you, but just ten minutes a week could help to keep Luton Town in existence. If you are prepared to help, please fill in the coupon below and send it to: Brian Swain, Secretary, Friends of Luton Town, Sports Desk, Luton News, Castle Street, Luton.

WE CAN SAVE LUTON TOWN. WE WILL.

I would like to know what I can do to help save Luton Town. I am over/under\* 18 years of age.

Name: .....

Address: .....

\*—Please delete whichever is not applicable.



**PREMAC**

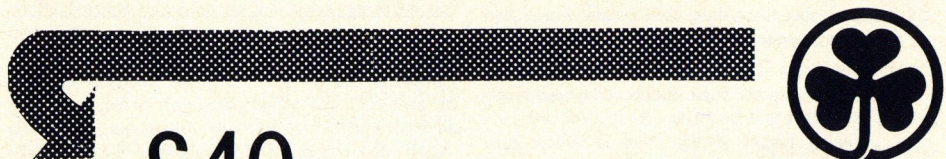
**PREMAC ENGINEERING  
(Dunstable) LIMITED**

PRODUCTION & GENERAL ENGINEERS  
WINGATE ROAD, LUTON, BEDS. LU4 8PX

Telephone:  
Luton 593621

GENERAL ENGINEERS AND SUPPLIERS  
TO THE MOTOR TRADE, INCORPORATING GOLD STAR  
UNIT TOOLING. i.e. PRESS BRAKE AND MULTI-PIERCING TOOLS.

*Brochure on request*



A **£40** IRISH HOLIDAY VOUCHER

**WILL BE WON**

at the **LUTON v BRISTOL ROVERS AND the  
LUTON v BLACKPOOL** Matches

CHECK YOUR PROGRAMMES FOR THESE MATCHES  
FOR FURTHER DETAILS

**IRISH TOURIST BOARD • 01-493 3201 • Maureen O'Kelly**

**KENILWORTH PATRONS CLUB**

- **NEAHURST LIMITED** Suppliers of Thermoplastic Polymers  
London Road, Lower Stondon, Bedfordshire Telephone: Hitchin 814008
- **E. W. HUDSON HOLDINGS LIMITED**  
Union Street, Luton, Bedfordshire. Telephone: 30511
- **BEADLOW MANOR GOLF & COUNTRY CLUB**  
Silsoe, Near Shefford, Bedfordshire. Telephone: Silsoe 60800
- **EURO EXHAUST CENTRE**, 233 Dunstable Road, Luton. Telephone: 38651  
Branches Nationwide. Probably the world's best Exhaust service.
- **Mr and Mrs M. TALBOT**, Stoke Mandeville, Buckinghamshire.

**THE NEW HATTERS!**

P.W.W. CATERERS headed by Chairman Mr Keith Wrotton who is also Chairman of Southern League club Hastings United, plan to make Luton Town one of the 'Social Clubs' in the country.

In conjunction with the Directors of Luton Town F.C. they have now taken over the sole catering and drink licences for the premises.

Enjoy a drink and something to eat with the confidence of knowing that it is provided by an experienced and professional British company.

**CESARS PALACE** Tel: Luton (0582)51357/594144

TONIGHT—

**FIDDLYGIG**

11th APRIL FOR TWO WEEKS—

**DANNY LA RUE**



**Season Ticket Prices for Season 1976-77**

CENTRE AND BOBBERS CENTRE STAND—£42.00  
If purchased before 24th April—£35.00  
Less monies outstanding for Cup-ties not played (for existing holders only)—£29.00  
WING AND BOBBERS WING STAND—£31.00  
If purchased before 24th April—£25.00  
Less monies owing for Cup-ties not played (for existing holders only)—£20.50  
ENCLOSURE—£24.00  
If purchased before 24th April—£20.00  
Less monies owing for Cup-ties not played (for existing holders only)—£17.30

**EXISTING SEASON TICKET HOLDERS MUST RENEW THEIR TICKETS BY 31st MAY  
BEFORE GOING ON SALE TO THE GENERAL PUBLIC**

**Finance facilities for the purchase of Season Tickets have been arranged with the  
following company:**

**GRABARN FINANCE LIMITED**

**1 KINGS ARMS YARD, AMPHILL, BEDFORDSHIRE  
Telephone: Ampthill 404333 and 403537**

SUPPORTERS WISHING TO PURCHASE A SEASON TICKET SHOULD CONTACT THE  
ABOVE COMPANY IMMEDIATELY. TAKING ADVANTAGE OF THE PRESENT DISCOUNT  
WHICH IS AVAILABLE UNTIL THE END OF APRIL.



# TOWN TRAVEL

## CHELSEA v LUTON TOWN

Friday 16th April 1976 Kick-off 3.00 pm

Leave Luton via the Dunstable Road, towards the M1 motorway. Proceed South on M1 and leave the motorway at the junction with the A1 (Great North Way) and continue along the A41. Turn right at the A41 intersection with the A406 (North Circular Road) at the Golders Green junction. Follow the A406 through Neasden, Willesden, Ealing and Acton. At the junction with the A4 (Great West Road) turn right. Turn right along the A219 (Fulham Palace Road) and

left into New Kings Road. Chelsea football ground is situated at Stamford Bridge which is the fourth road on the left along New Kings Road.

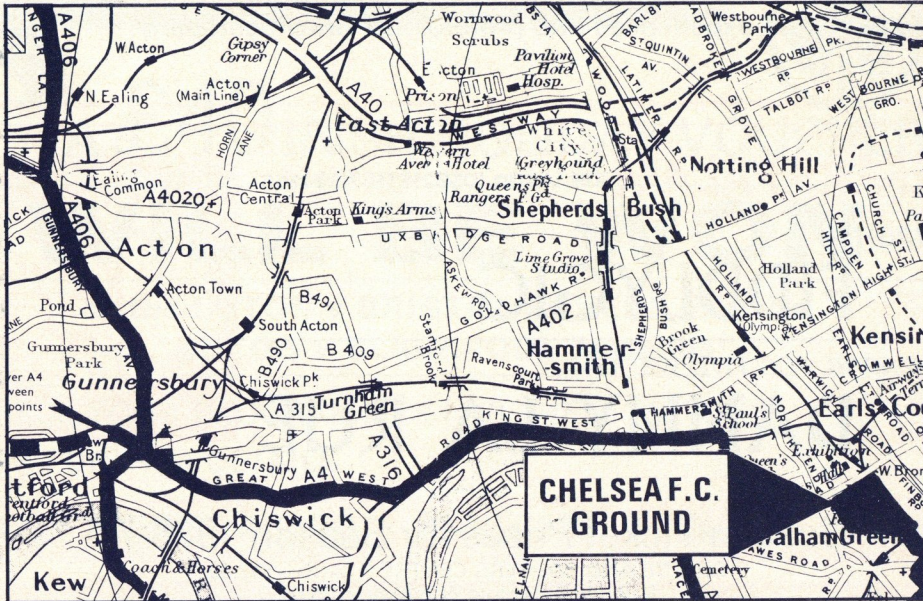
### TRICENTROL COACHES

To Chelsea, 16th April

Depart Maple Road, Luton, 12-30 pm. Fare £1.00

To Oxford, 17th April

Depart Maple Road, Luton, 12-00 pm. Fare £1.00



## THE NEW HATTERS!

P.W.W. CATERERS headed by Chairman Mr Keith Wrotton who is also Chairman of Southern League club Hastings United, plan to make Luton Town one of the 'Social Clubs' in the country.

In conjunction with the Directors of Luton Town F.C. they have now taken over the sole catering and drink licences for the premises.

Enjoy a drink and something to eat with the confidence of knowing that it is provided by an experienced and professional British company.



# We always win

We give that winning look to fruit, flowers, vegetables and turf. All purpose ECLIPSE semi organic garden manure promotes healthier, stronger growth in the garden all the season through. Team up with ECLIPSE and be a winner in your garden.

## Humber Manures

PO Box 27 Stoneferry  
Hull HU8 8DQ



## Chevette. 'A star performer!'

Motor w/e July 5.

**Vauxhall**  



# TEAMCHECK

## LUTON TOWN

Colours: Shirts - Orange with a White & Navy Stripe. Shorts - Navy. Stockings - Orange.

- 1 KEITH BARBER
- 2 JOHN RYAN
- 3 STEVE BUCKLEY
- 4 MATT POLLOCK
- 5 PAUL PRICE
- 6 PAUL FUTCHER
- 7 JIMMY HUSBAND
- 8 BRIAN CHAMBERS
- 9 RON FUTCHER
- 10 ALAN WEST
- 11 JOHN ASTON
- 12 PETER SPIRING

## NOTTS COUNTY

Colours: Shirts - Black and White Stripes. Shorts - Black. Stockings - White.

- 1 ERIC McMANUS
- 2 PEDRO RICHARDS
- 3 RAY O'BRIEN
- 4 DAVID SMITH
- 5 DAVID NEEDHAM
- 6 BRIAN STUBBS
- 7 STEVE CARTER
- 8 JOHN SIMS
- 9 LES BRADD
- 10 ALAN BIRCHENALL
- 11 ARTHUR MANN
- 12 TRISTAN BENJAMIN

**MASCOT: PETER WILSHER, aged 11**

## MAN IN THE MIDDLE

**Referee:**

**Mr L. F. BURDEN, Broadstone, Dorset**

Refereed in the Southern League for five years and went on the League line in 1970. Promoted to the Supplementary List for last season and to the full list this year. Refereed a Southern League Cup semi-final in 1971-72 and was on the line for the England v Denmark Under-23 match in 1973-74. A married man with three children, he works as an interior furnishing and design director and lectures to local societies. President of Poole Referee's Association and Chairman of East Dorset (County) Referees Association.

**Linesmen:**

**Mr N. H. BENTON, Cambridge (Red Flag)**  
**Mr J. J. FAULKNER, Didcot (Orange Flag)**

# SCORECHECK

1	Aston Villa v Liverpool	
2	Burnley v Birmingham City	
3	Everton v Arsenal	
4	Ipswich T v Manchester U	
5	Leicester City v Norwich City	
6	Manchester City v Derby County	
7	Q.P.R. v Middlesbrough	
8	Sheffield U v West Ham U	
9	Stoke City v Coventry City	
10	Tottenham H v Leeds U	
11	Wolverhampton W v Newcastle U	
12	Bristol City v Chelsea	
13	Carlisle United v Bristol Rovers	
14	Fulham v Hull City	
15	Nottingham F v Oxford U	
16	Oldham Athletic v Portsmouth	
17	Orient v Bolton Wanderers	
18	Southampton v Blackpool	
19	Sunderland v Blackburn Rovers	
20	York City v Plymouth Argyle	
21	Brighton H.A. v Port Vale	
22	Crystal Palace v Cardiff City	
23	Hereford United v Millwall	
24	Peterborough U v Chesterfield	

**BALL DONOR: YATES 'ALL-STAR' F.C.**

## SECOND DIVISION TABLE

Teams	Home					Away						
	P	W	D	L	F A	P	W	D	L	F A		
Bristol City	38	10	6	2	30	10	8	7	5	25	21	49
Sunderland	37	16	2	0	41	9	4	6	9	15	24	48
W B Albion	37	8	9	2	24	11	9	3	6	19	19	46
Bolton W	36	10	5	3	28	11	7	6	5	23	22	45
Notts County	36	9	5	4	27	13	7	3	8	22	24	40
<b>Luton Town</b>	<b>37</b>	<b>11</b>	<b>5</b>	<b>2</b>	<b>31</b>	<b>13</b>	<b>5</b>	<b>3</b>	<b>11</b>	<b>18</b>	<b>33</b>	<b>40</b>
Southampton	35	14	2	1	40	12	2	5	11	16	31	39
Nottm Forest	37	10	1	7	26	18	4	10	5	21	20	39
Charlton A	36	10	4	4	37	28	4	6	8	17	32	38
Blackpool	37	7	9	3	23	21	5	4	9	12	20	37
Fulham	36	9	5	4	25	12	4	5	9	17	26	36
Chelsea	36	7	7	4	23	16	5	4	9	23	29	35
Plymouth A	38	12	4	4	35	20	0	7	11	11	29	35
Hull City	37	8	5	6	25	19	5	4	9	15	24	35
Oldham A	37	10	7	1	30	19	2	4	13	20	37	35
Bristol Rovers	36	6	8	5	18	15	4	7	6	14	22	35
Orient	36	9	4	5	19	11	2	8	8	13	23	34
Blackburn R	37	6	6	7	22	22	4	7	7	17	23	33
Carlisle United	37	7	7	4	23	20	3	5	11	15	34	32
Oxford United	37	6	7	6	21	22	4	4	10	14	26	31
Portsmouth	36	3	5	10	11	19	5	1	12	15	30	22
York City	37	7	1	10	22	30	1	5	13	9	32	22

Up to and including Saturday, 3rd April, 1976