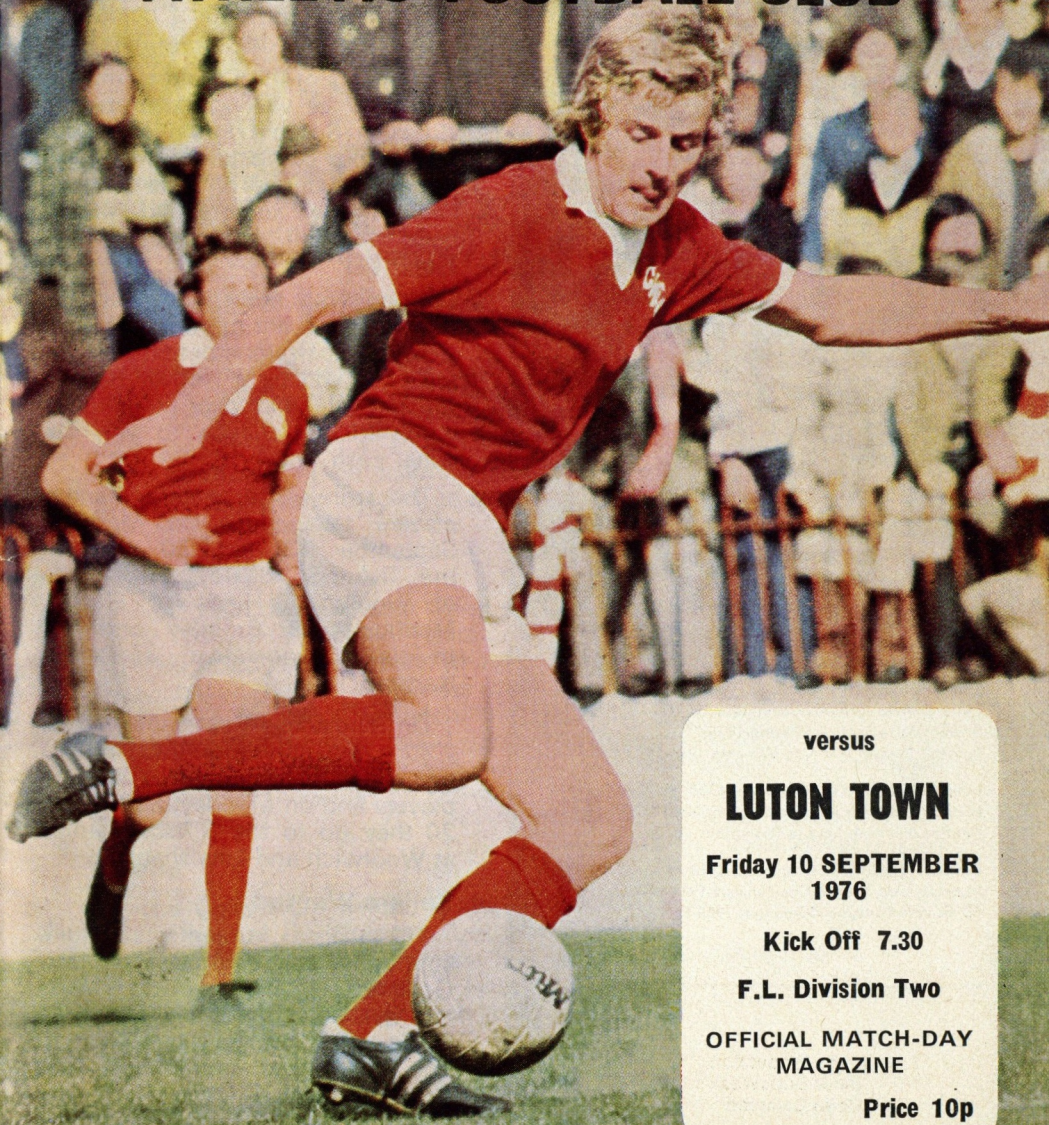


# CHARLTON

**ATHLETIC FOOTBALL CLUB**



versus

**LUTON TOWN**

**Friday 10 SEPTEMBER  
1976**

**Kick Off 7.30**

**F.L. Division Two**

**OFFICIAL MATCH-DAY  
MAGAZINE**

**Price 10p**



Chairman: E. M. Gliksten

Directors: W. J. Jenner  
A. T. G. Pocock, M.B.E.  
C. W. Wheeler  
D. Follows, C.B.E.  
F. W. Boswell

General Manager and Secretary:  
R. W. Stone

Team Manager: A. Nelson

Assistant Secretary: Mrs. J. P. Doble

Hon. Consultant Orthopaedic Surgeon:  
Mr. John Buck

---

FA Cup Winners 1946-47 Finalists 1945-46  
Football League First Division (Runners-up) 1936-37  
Second Division (Runners-up) 1935-36  
Third Division (South) Champions 1928-29 1934-35  
Promotion to Second Division-1974-75  
Football League War Cup Winners 1943-44 Finalists  
1942-43  
London Challenge Cup Winners 1922-23 1950-51  
London Challenge Cup Finalists 1923-24 1951-52  
London Midweek League Champions  
1950-51 57-58 58-59 59-60  
Metropolitan League Champions 1963-64  
Metropolitan League Cup Finalists-1963-64  
SE Counties League Champions 1966-67

---

Programme Production:  
Peter Burrowes  
Colin Cameron

Photographs:  
Tom Morris

# Comment

The club's next home league match against Southampton on Friday, September 24, is being sponsored by Hoover Ltd. and the company are also carrying out a large promotional campaign in conjunction with the sponsorship.

Members of the Charlton Athletic team will be visiting departmental stores in South London and Kent and various competitions are taking place. The winners of these contests will receive autographed match balls, football kits and Hoover T-shirts.

Along with the sponsorship the Football Club are running a special Golden Goals competition when the prize will be a Hoover Ranger Cleaner valued at over £60, in addition to the chance to win the usual cash prizes.

The store visits by the Charlton players take place on Monday, September 13, at 2.30 p.m., at the R.A.C.S. Bexleyheath, Cuffs of Woolwich, Hinds of Eltham, Medhursts of Bromley and the Invicta Co-operative store at Dartford.

On Thursday, September 16 at 2.30 p.m. Sittingbourne Co-operative store will be visited by the players and on Monday, September 20 they go to the R.A.C.S. stores at Woolwich and Lewisham.

## Sellers Wanted

The club urgently require supporters (over 16) to sell Golden Goal tickets. If you are interested and available please call in at the Pools office on your next visit to The Valley and ask to see Tom Enefer or David Hannant. If you enter the ground or stand on the opposite side to the main grand-

stand Ken Turner will be available to meet you in the C.A.F.R.O. office near the Bartram Gate.

## Visitors

Tonight's visitors for our first Friday evening home league match of the season are Luton Town who have a new face in their side in Dixie Deans who was signed from Scottish League club Celtic during the summer.

The Charlton team go into the match looking for their first league win of the season and the opening four Second Division matches have produced just two points, a disappointing start which the players will be looking to improve on tonight.

## Defeat

With only 20 minutes of the league match remaining against Wolves at Molyneux on Saturday we looked good for a point at least then the home team rattled in three late goals to send us back to London pointless.

## Next Match

Next Saturday the team travel to play newly promoted Hereford United at Edgar Street, and should we have been successful in Tuesday's league cup match with Southampton the next round game against West Ham United will take place at The Valley on Tuesday, September 21.

## Colts

The Colts were beaten 5-2 by Gillingham at the Garrison Ground last Saturday despite taking the lead through Carey. Willie O'Sullivan got the other goal from a penalty.

To-morrow, Saturday morning, the Colts are due to be at home to

Spurs and details of where the game is being played will be announced over the public address system.

The reserves were due to play Brighton and Hove Albion at the Goldstone Ground on Tuesday, but the game was postponed because both our clubs were involved in Football League Cup matches. The game did in fact take place at Hove last night (Thursday).

## Supporters' Meeting

Tom Enefer, the club's Senior Commercial Manager, and the Football Club, have been overwhelmed by the response from supporters wishing to attend the Open Meeting at The Valley Club next Tuesday, September 14.

In view of this supporters who have not received tickets for this meeting are asked to apply to Mr. Enefer for tickets for a second meeting which will be held on Tuesday, September 28.

## Travel In Comfort

Forget tiring journeys. Forget parking problems. You can begin your journey to travel comfort tonight at The Valiants Travel Club kiosks situated behind the main stands and near the Bartram Gate.

We have luxury coaches booked to all Charlton's away games driven by safe reliable drivers. Why not begin with a trip to Hereford next week leaving the ground at 9.15 a.m., price £2.25.

## Supporters Meeting

A very important Open Meeting of Supporters and Supporters' Club members will be held at The Valley Club next Tuesday, September 14,

*continued on page 8:*

# WELCOME TO

# LUTON TOWN



**TOP ROW:** Brian Gregory, Steve Buckley, Tim Smith, Kim Wassel, John Dixie Deans, Ricky Hill, Sandor Simon.  
**MIDDLE ROW:** Graham Jones, Paul Futcher, John Faulkner, Tony Knight, Keith Barber, John Ryan (now with Norwich), Paul Price, James McNichol, Reg Game, (Physio.)



**FRONT ROW:** Pasquale Fuccillo, Brian Chambers, David Carr, Roy McCrohan (Coach), Harry Haslam, (Manager), Jimmy Husband, John Aston, Peter Mead.

Having entertained Fulham, the oldest Club in London, a fortnight ago, it gives us much pleasure in welcoming the first professional Club in the South, Luton Town.

Although Luton were formed in May 1885 as a result of an amalgamation of Luton Wanderers and Luton Excelsior, their links with top class soccer go even further back for the Wanderers' had already played an F.A. Cup match against the then famous Old Etonians.

At that 1885 incorporation meeting, one of the resolutions passed was that the Club's colours would be navy blue and pink halves for both shirts and caps and that these two items would be worn by each player on the field.

The first ground used was Excelsior at Dallow Lane where they remained for 12 years before moving to Dunstaple Road in 1897. The Dunstaple Road ground was formally opened by the Duke of Bedford on April 3, 1897, when he kicked-off the United League match between Luton and Loughborough. Eight years later they were on the move again, this time to their present venue, Kenilworth Road.

The record books state that Luton became the first Southern Club to adopt professionalism in December 1890 when the princely sum of 5/- per week was offered to three of their players but one can go even further back to find that three of Luton's players were given the proceeds of a match played in 1886/87.

The Hatters were elected to the Football League in 1897/98 but their stay was short, not seeking re-election after finishing second from bottom at the end of their third season. They spent the next two decades in the Southern League before rejoining the Football League in 1920/21.

Our League record against Luton:—

|          | P  | W  | D | L  | F  | A  | Pts |
|----------|----|----|---|----|----|----|-----|
| Home ..  | 18 | 10 | 4 | 4  | 36 | 24 | 24  |
| Away ..  | 18 | 4  | 3 | 11 | 22 | 33 | 11  |
| Total .. | 36 | 14 | 7 | 15 | 58 | 57 | 35  |

# NEW TYRE BARGAINS



## ROCK BOTTOM PRICES



FANTASTIC SAVINGS FOR ALL MOTORISTS—WHY PAY MORE?

*Fitted Free while 'U' Wait*

Mon. to Fri. up to 9 p.m. Sat. and Sun. up to 3 p.m.

### NEW CROSS PLY

| Size     | Our Price | Size     | Our Price | Size     | Our Price |
|----------|-----------|----------|-----------|----------|-----------|
| 520 x 10 | £5.46     | 600 x 13 | £6.86     | 560 x 14 | £6.78     |
| 550 x 12 | £6.04     | 640 x 13 | £7.56     | 590 x 14 | £6.98     |
| 6.2 x 12 | £6.23     | 670 x 13 | £9.48     | 560 x 15 | £7.18     |
| 600 x 12 | £7.82     | 670 x 13 | £11.14    | 600 x 15 | £8.08     |
| (6 ply)  |           | (6 ply)  |           | 640 x 15 | £8.89     |
| 520 x 13 | £6.15     | 6.2 x 13 | £6.62     | 640 x 15 | £10.44    |
| 560 x 13 | £6.40     | 520 x 14 | £6.31     | (6 ply)  |           |

## REMOULD TYRES

FROM ONLY

# £3.20

EACH ALL SIZES IN STOCK

## BATTERIES

TO FIT ALL VEHICLES

EXAMPLE:  
ESCORT/CORTINA  
1100/1300/MARINA

# £9.50

EACH EXCHANGE

### NEW RADIALS

| Size     | Our Price | Size     | Our Price | COMMERCIAL VAN |           |
|----------|-----------|----------|-----------|----------------|-----------|
| 145 x 10 | £7.55     | 175 x 13 | £11.36    | Size           | Our Price |
| 145 x 12 | £8.18     | 165 x 14 | £10.71    | 550 x 12       | £8.58     |
| 155 x 12 | £8.66     | 175 x 14 | £11.94    | 650 x 14       | £12.22    |
| 145 x 13 | £8.42     | 185 x 14 | £14.10    | 700 x 14       | £14.28    |
| 155 x 13 | £9.38     | 155 x 15 | £10.39    | 750 x 14       | £16.65    |
| 165 x 13 | £10.33    | 165 x 15 | £11.06    | 640 x 15       | £12.67    |

*MOT Vehicle testing while you wait*

Mon.—Fri. 9 a.m. to 9 p.m. Sat. 9 a.m. to 3 p.m.

*Telephone or call for appointment.*

★ All Prices Quoted Subject to VAT ★

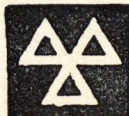
COMPUTER WHEEL BALANCING — ALIGNMENT — VULCANISING  
Cheques with Bankers Card, Barclay Card & Access Cards accepted

## VALLEY SERVICE STATION

MINISTRY OF TRANSPORT VEHICLE TESTING STATION

655 WOOLWICH ROAD, CHARLTON, S.E.7

LOOK FOR THE TEXACO SIGN Telephone: 858 6639



# NEWS ON 2

The first appearance of George Best for Fulham; the 20,000 "gate" barrier broken at last; the first Second Division "hat-trick"; Millwall's ninth scorer this season; and a player who appeared for his team's Reserves and First team on the same day.

All these events, which happened last Saturday, add interest to our Division which certainly needs a boost following the departure in the last two years of big "gate" pullers Manchester United, Aston Villa and Sunderland.

The top 2nd Division attendance so far this season was at Craven Cottage to welcome back George Best and Rodney Marsh to the English League scene. The crowd of 21,172, which produced Fulham record receipts of £19,406, was beaten only once at Craven Cottage last season when 22,921 turned up for the visit of neighbours Chelsea. It's history now but let's put it on record that George delighted the cutomers in a story book return by scoring after only 71 seconds.

### NINTH SCORER

The only other 20,000 plus gate was down the road at The Den where 21,002 saw Millwall's magnificent 3—0 victory over Chelsea. In this match Terry Brisley became the ninth Millwall player to score in League and Cup games which is incredible going with less than a month of the new season under way.

Also in this game, Chelsea's veteran defender Ron Harris completed an unusual double by coming on as substitute in the second half after having played for the Reserves against Crystal Palace Reserves at Stamford Bridge in the morning. It may have happened before, but we certainly have no record of a player appearing in two London derby games on the same day and also appearing at two London League grounds.

### HAT TRICK

Finally, congratulations to Dixie McNeil who recorded the first "hat-trick" in Division 2 this season in newly promoted Hereford's 3—0 home victory over relegated Burnley. Last season Dixie led the Third Division scoring charts with 37 League and Cup goals, scoring two "hat-tricks" in the process. Fifth highest scorer in the Third Division last season was Tony Evans (Cardiff) who, despite missing City's match at The Valley through injury has already notched seven goals (six League Cup and one League), one more than McNeil. Four of Tony's goals were scored in Cardiff's 4—4 League Cup result at Eastville against Bristol Rovers.

*Comment continued*

when it is hoped to forge the close links between the fans and the parent club still further.

The football club have progressive aims for the expansion of the current Supporters' Club and it is intended to form a new Supporters' Club Committee on the night.

At the recent annual meeting of the Supporters' Club it was unanimously agreed that the time had arrived when all sections of support were brought together as one body.

Although the meeting is intended for supporters over the age of 16 the youngsters have not been forgotten as we shall be forming a junior section as soon as possible.

Anybody wanting further information about the meeting should contact the club's Commercial

Manager, Tom Enefer—858 6060, or his assistant David Hannant who can be reached during the evening on 858 5447.

### Valley Club

Why not become a member of The Valley Club in Harvey Gardens which provides a friendly atmosphere and excellent bar facilities?

Top class entertainment is provided at weekends and the club has recently been completely re-furnished.

The club opens every lunchtime and every night of the week and the saloon bar has a colour television for patrons.

Joint membership is £3 a year and single membership £2. Pat and Ray Donn, who manage the club, will be pleased to see you.

## Why not purchase a Season Ticket and Save Money

Ground Seasons are available at £6 to children under 16 on August 14, a Grandstand seat costs £11 and a Jubilee Club seat £25.

The respective prices for adults are £12 (ground), £25 (grandstand) and £50 Jubilee Club which includes a theatre type seat, private lounge and bar and a car parking space in the ground.

# FLASHBACK



### 40 YEARS AGO

Les Boulter for the injured George Stephenson was Jimmy Seed's only change for the Monday trip to Stoke (August 31). The Stoke team, which included Stanley Matthews and Frank Soo, opened the scoring through Steele but before the interval Prior had levelled matters.

There was no scoring after the interval and Seed's verdict of his team was "A real good side on this form" so it was no surprise he kept an unchanged team the following Saturday (5th September).

It was big day for Charlton, playing hosts to Liverpool in the first ever Division 1 match at The Valley, and despite the thunder and heavy showers, 31,295 were present to see Boulter give the 'Haddicks' a third minute lead. From then on we missed several chances and paid the penalty near the finish when Hanson equalised for the visitors.

Two days later Charlton were again hosts for the return match against Stoke. John Oakes, who was forced to leave the field against Liverpool, was unfit and Frank Rist played, and Stephenson returned to the attack at the expense of George Robinson. The windy conditions upset Charlton's rhythm in the first half but they improved after the interval to score through Prior and Boulter and record a 2-0 victory. We were now the only unbeaten London side and what's more top of the Division.

### 20 YEARS AGO

Two days after our disappointment against Leeds we entertained Luton, and Seed's only change was Hammond for the injured Ufton. We had enough chances to win handsomely but had only a Gordon Hurst goal (15 mins.) to show for our efforts and this was not enough to counter the two from Luton's Bob Morton and Mike Cullen.

For the return match against Leeds (August 29), O'Linn and Jago replaced Hewie and McCarthy. Up front, "Buck" Ryan came in for Ayre. It was all to no avail, we were whipped 4-0 and our dismal record after four games was played 4 lost 4.

These were grim days for the Charlton club and even worse were to follow. For our visit to Roker Park, Peter Firmani, Hewie, McCarthy and Ayre replaced Campbell, O'Linn, Jago and White but on reflection those four dropped players must have had no regrets.

We were summarily hammered 8-1 by Sunderland (Hewie 88 mins.), our biggest ever defeat at that time. More important it was the end of an era for a really great Charlton man, Jimmy Seed, who left the Club two days later after 23½ years of magnificent service.

### 10 YEARS AGO

Ron Saunders returned to the side, at the expense of Roy Matthews, for the visit on September 3 to Derby who, like ourselves, were still seeking their first victory. Charlton were a shade lucky to be leading at the interval through a Phil Waller own goal. Despite the handicap of injuries to Kenning, Saunders and Glover, we performed better after the break and were rewarded when Saunders put the issue beyond doubt.

Newly appointed Director, Kent and England cricketer Colin Cowdrey, travelled with the team to Ashton Gate the following Tuesday (September 6) for the match against Bristol City managed by former Charlton player Fred Ford. Keith Peacock for Len Glover, who had not recovered from an ankle injury sustained at Derby, was the only team change.

Despite the score line (0-4) we played attractive football in this game but paid the penalty for bad finishing early in the game.

The four goals conceded against City ended a run of three "clean sheets" and was one more goal than we had conceded in our opening five games.

We opened our Mid-Week (Reserve) programme with a 3-0 win over Colchester Reserves at The Valley (September 6), Vic Halom scoring a "hat-trick" in front of 685 fans.

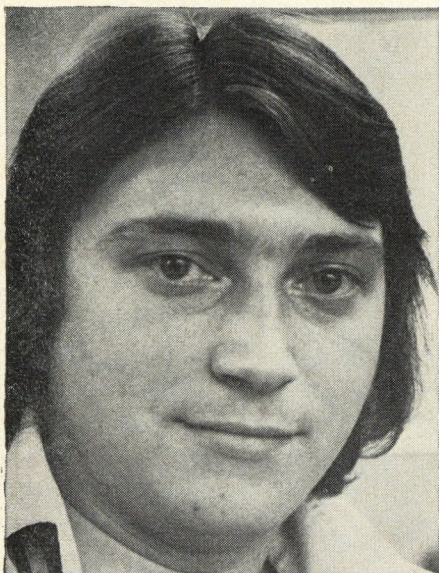


**IN ACTION** \*\*\*

**Last Saturday's match at Molineux.**  
*(above)*  
Peter Hunt in a tight tussle with Geoff Palmer  
*(right)*  
Mike Flanagan leaves Mike Bailey stranded but our former captain does not seem too upset.



# spotlight



Mick Batchelor first came to The Valley in 1961 at the age of six when he lived in Charlton. He has since moved to West Kingsdown

and has missed very few matches in the intervening years.

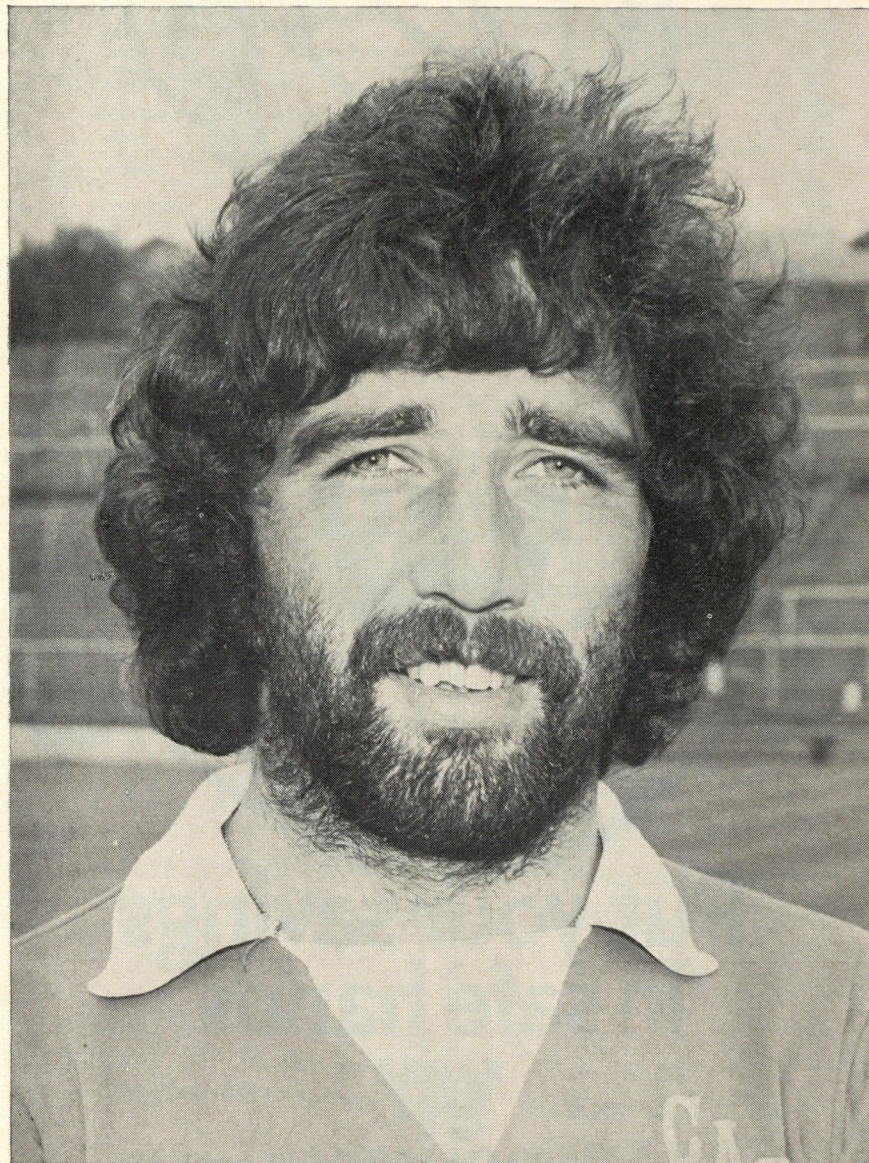
Following a reorganisation of the committee, Mick has taken over as secretary of Valley Away and will be instrumental in arranging trips for those of our supporters who prefer to travel by train.

Mick hopes that membership of Valley Away will increase so that larger donations can be made to the parent club.

An accounts clerk with Ind Coope, Mick is engaged to Carole Gorman who lives in Southend. They plan to marry during next summer's close season.

Mick's best remembered matches include the League Cup victory over Leicester City and the 3-2 away win at Hull. In the present side he admires Peter Hunt's 100% aggression.

# PORTRAIT GALLERY



Since joining us from today's visitors, Luton Town, **DEREK HALES** has been a prolific goal-scorer.

---

## Team Facts

Saturday, September 4 the Colts v. Gillingham away, South East Counties League lost 5-2 (Carey, O'Sullivan pen.).

Team Brouner, Neil Campbell, Waller, David Campbell (Walker after 75 minutes), Brand, Stock, Biggs, Wilson, O'Sullivan, O'Hara, Carey. Subs. Walker and Powell.



**Put your savings  
in safe hands**

**W**  
**WOOLWICH**  
EQUITABLE BUILDING SOCIETY

**The Woolwich makes your money grow**

**SOUTH EAST COUNTIES LEAGUE FIXTURES  
DIVISION I 1976/77**

|      |    |                |                     |
|------|----|----------------|---------------------|
| 1976 |    |                |                     |
| Aug. | 21 | Millwall       | (H) 0-2             |
|      | 28 | Southend U.    | (H)                 |
| Sep. | 4  | Gillingham     | (A) Garrison Ground |
|      | 11 | Tottenham H.   | (A) Unilever        |
|      | 18 | Ipswich Town   | (A) Portman Road    |
|      | 25 | Cup            |                     |
| Oct. | 2  | Crystal Palace | (A) Langley Park    |
|      | 9  | Arsenal        | (H) Unilever        |
|      | 16 | Chelsea        | (A) Mitcham         |
|      | 23 | Cup            |                     |
|      | 30 | West Ham U.    | (A) Chadwell Heath  |
| Nov. | 6  | Fulham         | (H) Unilever        |
|      | 13 | Portsmouth     | (A) Eastney         |
|      | 20 | Watford        | (H) Unilever        |
|      | 27 | Cup            |                     |
| Dec. | 4  | Gillingham     | (H) Unilever        |
|      | 11 | Tottenham H.   | (A) Cheshunt        |
|      | 18 | Orient         | (H) Unilever        |
| 1977 |    |                |                     |
| Jan. | 1  | Southend U.    | (A) Rochway         |
|      | 8  | Ipswich        | (H) Unilever        |
|      | 15 | Norwich C.     | (A) Unilever        |
|      | 22 | Millwall       | (A) Langley Park    |
|      | 29 | Q.P.R.         | (H) Unilever        |
| Feb. | 5  | Fulham         | (A) Cheam           |
|      | 12 | Portsmouth     | (H) Unilever        |
|      | 19 | Crystal Palace | (H) Unilever        |
|      | 26 | Chelsea        | (H) Unilever        |
| Mar. | 5  | Orient         | (A) Spring Hill     |
|      | 12 | West Ham U.    | (H) Unilever        |
|      | 19 | Watford        | (A) Watford         |
|      | 26 | Q.P.R.         | (A) South Ruislip   |
| Apr. | 2  | Norwich C.     | (H) Unilever        |
|      | 9  |                |                     |
|      | 16 | Arsenal        | (A) London Colney   |

**THE MID-WEEK FOOTBALL LEAGUE  
FIXTURES 1976/77**

|           |    |                      |     |
|-----------|----|----------------------|-----|
| 1976      |    |                      |     |
| August    | 24 | Watford              | (H) |
| September | 7  | Brighton & H.A.      | (A) |
|           | 14 | Millwall             | (H) |
|           | 28 | Gillingham           | (H) |
| October   | 12 | Brighton & H.A.      | (H) |
|           | 18 | Cambridge United     | (A) |
|           | 26 | Southend United      | (H) |
| November  | 3  | Southend United      | (A) |
|           | 23 | Portsmouth           | (H) |
| December  | 1  | Millwall             | (A) |
|           | 7  | Brentford            | (H) |
|           | 15 | Portsmouth           | (A) |
|           | 21 | Cambridge United     | (H) |
| 1977      |    |                      |     |
| January   | 5  | Peterborough         | (A) |
|           | 12 | Watford              | (A) |
|           | 19 | Gillingham           | (A) |
|           | 25 | Peterborough U.      | (H) |
| February  | 1  | Brighton & H.A. (LC) | (H) |
| March     | 2  | Northampton Town     | (A) |
|           | 22 | Brighton & H.A. (LC) | (A) |
|           | 29 | Portsmouth (LC)      | (H) |
| April     | 6  | Portsmouth (LC)      | (A) |
|           | 26 | Northampton          | (H) |
|           |    | Brentford            | (A) |
|           |    | To be arranged       |     |

**VALLEY SHOP**

The Valley Shop behind the main grandstand is stocked with the best in football souvenirs, black and white and coloured photographs of the team and individual players, and the best programme selection. Why not pay a visit?

Telephone: 01-639 8624/5

**SUN ASPHALT  
CO. LTD.**

ASPHALT ROOFING,  
FLOORING, TANKING  
TARMACADAM,  
FELT ROOFING

ROOFING & TARMACADAM  
CONTRACTORS TO D.O.E. &  
LOCAL AUTHORITIES, etc.

190 RYE LANE  
PECKHAM, LONDON  
SE15 4NF

**ADDRESS  
PRINTING COMPANY  
LIMITED**

▲  
*Periodical and  
Commercial  
Printers*

▼  
**91-93  
WADDON NEW ROAD  
CROYDON, SURREY  
CR0 4JB**

Telephone: 01-688 3182-3





| Date   | Opponents           | V | R   | Att.   | 1    | 2       | 3      | 4    | 5         | 6       | 7      | 8         | 9        | 10       | 11          | 12       |
|--------|---------------------|---|-----|--------|------|---------|--------|------|-----------|---------|--------|-----------|----------|----------|-------------|----------|
| Aug 21 | Cardiff City        | H | 0-2 | 9,726  | Wood | Hammond | Warman | Hunt | Giles     | Curtis* | Powell | Hales     | Hope     | Bowman   | Flanagan    | D. Young |
| 25     | Nottingham Forest   | A | 1-1 | 12,662 | Wood | Hammond | Warman | Hunt | Giles     | Berry   | Powell | Hales (1) | Flanagan | T. Young | Peacock     | Bowman   |
| 28     | Fulham              | H | 1-1 | 10,699 | Wood | Hammond | Curtis | Hunt | Giles     | Berry   | Powell | Hales (1) | Flanagan | Warman   | Peacock (1) | Penfold  |
| 31     | Southampton (LC2)   | A | 1-1 | 13,371 | Wood | Hammond | Warman | Hunt | Giles     | Curtis  | Powell | Hales (1) | Flanagan | T. Young | Peacock     | Berry    |
| Sept 4 | Wolverhampton W.    | A | 0-3 | 15,652 | Wood | Berry   | Warman | Hunt | Giles     | Curtis  | Powell | Hales (1) | Flanagan | T. Young | Peacock     | Penfold  |
| 7      | Southampton (LC2 R) | H | 2-1 | 13,198 | Wood | Hammond | Warman | Hunt | Giles (1) | Curtis  | Powell | Hales (1) | Flanagan | T. Young | Peacock     | Berry    |
| 10     | Luton Town          | H |     |        |      |         |        |      |           |         |        |           |          |          |             |          |
| 18     | Hereford United     | H |     |        |      |         |        |      |           |         |        |           |          |          |             |          |
| 21     | West Ham L.C. 3     | A |     |        |      |         |        |      |           |         |        |           |          |          |             |          |
| 24     | Southampton         | H |     |        |      |         |        |      |           |         |        |           |          |          |             |          |
| Oct 2  | Carlisle United     | A |     |        |      |         |        |      |           |         |        |           |          |          |             |          |
| 9      | Hull City           | H |     |        |      |         |        |      |           |         |        |           |          |          |             |          |
| 16     | Burnley             | A |     |        |      |         |        |      |           |         |        |           |          |          |             |          |
| 23     | Sheffield United    | H |     |        |      |         |        |      |           |         |        |           |          |          |             |          |
| 27     | League Cup 4        |   |     |        |      |         |        |      |           |         |        |           |          |          |             |          |
| 30     | Bristol Rovers      | A |     |        |      |         |        |      |           |         |        |           |          |          |             |          |
| Nov 5  | Plymouth Argyle     | H |     |        |      |         |        |      |           |         |        |           |          |          |             |          |
| 13     | Chelsea             | A |     |        |      |         |        |      |           |         |        |           |          |          |             |          |
| 20     | Blackpool(1)        | H |     |        |      |         |        |      |           |         |        |           |          |          |             |          |
| 27     | Bolton Wanderers    | A |     |        |      |         |        |      |           |         |        |           |          |          |             |          |
| Dec 4  | Blackburn Rovers    | H |     |        |      |         |        |      |           |         |        |           |          |          |             |          |
| 11     | Oldham Athletic(2)  | A |     |        |      |         |        |      |           |         |        |           |          |          |             |          |
| 18     | Notts County        | A |     |        |      |         |        |      |           |         |        |           |          |          |             |          |
| 27     | Millwall            | H |     |        |      |         |        |      |           |         |        |           |          |          |             |          |
| 29     | Orient              | H |     |        |      |         |        |      |           |         |        |           |          |          |             |          |
| Jan 1  | Plymouth Argyle     | A |     |        |      |         |        |      |           |         |        |           |          |          |             |          |
| 3      | Bristol Rovers      | H |     |        |      |         |        |      |           |         |        |           |          |          |             |          |
| 8      | F.A. Cup 3          |   |     |        |      |         |        |      |           |         |        |           |          |          |             |          |
| 14     | Nottingham Forest   | H |     |        |      |         |        |      |           |         |        |           |          |          |             |          |
| 19     | League Cup SF       |   |     |        |      |         |        |      |           |         |        |           |          |          |             |          |
| 22     | Cardiff City        | A |     |        |      |         |        |      |           |         |        |           |          |          |             |          |
| 29     | F.A. Cup 4          |   |     |        |      |         |        |      |           |         |        |           |          |          |             |          |
| Feb 5  | Fulham              | A |     |        |      |         |        |      |           |         |        |           |          |          |             |          |
| 12     | Wolverhampton W.    | H |     |        |      |         |        |      |           |         |        |           |          |          |             |          |
| 16     | League Cup SF       |   |     |        |      |         |        |      |           |         |        |           |          |          |             |          |
| 19     | Luton Town          | A |     |        |      |         |        |      |           |         |        |           |          |          |             |          |
| 25     | Hereford United     | H |     |        |      |         |        |      |           |         |        |           |          |          |             |          |
| Mar 5  | Southampton         | A |     |        |      |         |        |      |           |         |        |           |          |          |             |          |
| 11     | Cardiff City        | H |     |        |      |         |        |      |           |         |        |           |          |          |             |          |
| 19     | Hull City(6)        | A |     |        |      |         |        |      |           |         |        |           |          |          |             |          |
| 25     | Burnley             | H |     |        |      |         |        |      |           |         |        |           |          |          |             |          |
| Apr 2  | Sheffield United    | A |     |        |      |         |        |      |           |         |        |           |          |          |             |          |
| 8      | Millwall            | H |     |        |      |         |        |      |           |         |        |           |          |          |             |          |
| 9      | Orient              | A |     |        |      |         |        |      |           |         |        |           |          |          |             |          |
| 11     | Chelsea             | H |     |        |      |         |        |      |           |         |        |           |          |          |             |          |
| 16     | Blackpool           | H |     |        |      |         |        |      |           |         |        |           |          |          |             |          |
| 22     | Bolton Wanderers    | H |     |        |      |         |        |      |           |         |        |           |          |          |             |          |
| 30     | Blackburn Rovers    | A |     |        |      |         |        |      |           |         |        |           |          |          |             |          |
| May 7  | Oldham Athletic     | H |     |        |      |         |        |      |           |         |        |           |          |          |             |          |
| 14     | Notts County        | A |     |        |      |         |        |      |           |         |        |           |          |          |             |          |

## SOUTH EAST COUNTIES LEAGUE DIVISION 1 as at 4.9.76

|                | P | W | D | L | F  | A  | Pts |
|----------------|---|---|---|---|----|----|-----|
| Ipswich Town   | 3 | 3 | 0 | 0 | 12 | 5  | 6   |
| Gillingham     | 3 | 2 | 1 | 0 | 11 | 5  | 5   |
| Watford        | 3 | 2 | 1 | 0 | 6  | 2  | 5   |
| Portsmouth     | 3 | 2 | 1 | 0 | 5  | 3  | 5   |
| Fulham         | 3 | 2 | 0 | 1 | 7  | 2  | 4   |
| Q.P.R.         | 3 | 2 | 0 | 1 | 6  | 3  | 4   |
| Norwich        | 3 | 2 | 0 | 1 | 6  | 7  | 4   |
| Arsenal        | 3 | 1 | 1 | 1 | 4  | 3  | 3   |
| Tottenham H.   | 3 | 1 | 1 | 1 | 4  | 4  | 3   |
| Crystal Palace | 3 | 1 | 0 | 2 | 5  | 5  | 2   |
| Southend       | 3 | 1 | 0 | 2 | 4  | 4  | 2   |
| Millwall       | 3 | 1 | 0 | 2 | 3  | 5  | 2   |
| Charlton A.    | 3 | 1 | 0 | 2 | 4  | 8  | 2   |
| Chelsea        | 3 | 0 | 1 | 2 | 3  | 9  | 1   |
| West Ham U.    | 3 | 0 | 0 | 3 | 5  | 13 | 0   |
| Orient         | 3 | 0 | 0 | 3 | 0  | 7  | 0   |

### Valley Away

Trip to Hereford on Saturday, 18th September. Meet Paddington Station 9.30 a.m. Fare £3.75. Bookings will be taken after tonight's match at the hut just inside the main gate.

**Please Note-** Mick Batchelor can now be contacted on 047-485 3642 or phone Mick Anderson 852 5189.

The records being played at tonight's match have kindly been loaned to us by The Music Shop, Thomas Street, Woolwich

# WIN SUPER PRIZES ON 10p GOLDEN GOALS 10p



This season we have introduced a new style Golden Goal ticket price, 10p, with a big increase in Prize Money.

To celebrate the introduction of our new ticket we are promoting a "FREE PRIZE GAME" at our fixture with **SOUTHAMPTON, ON FRIDAY, 24th SEPTEMBER.**

If you purchase Golden Goal tickets at that game you will have the opportunity to win two extra Prizes Free.

A HOOVER RANGER VACUUM CLEANER (by courtesy of Hoover)  
PLUS A MATCHBALL, AUTOGRAPHED BY LAST YEAR'S CUP FINALISTS —  
SOUTHAMPTON & MANCHESTER UNITED

LOOK OUT FOR THE HOOVER GOLDEN GOAL GIRLS

# ECHOES ACROSS THE VALLEY

## MISSED WOLVES MATCH

Geoff Hammond our summer signing from Manchester City had to drop out of the team at Wolves last Saturday with slight concussion which he received in the Football League Cup tie with Southampton at The Dell. Geoff got a knock on the head during the game and still had a headache on Friday so he was advised not to travel. He was fit enough to return to the team for the replay against Southampton at The Valley on Tuesday.

## EVERGREEN SAM

Sam Bartram will never be forgotten at Charlton and further afield so it was good to see our former goalkeeper looking so fit when he was here two weeks ago to cover the Fulham match for a Sunday newspaper. Sam was full of sympathy for young Jeff Wood who misjudged Fulham's goal. He remarked: "It happens to all of us. I remember a 75 yard shot going between my legs in a match against Barnsley before the war". Before becoming a journalist Sam was Manager of today's visitors, Luton, and another former Charlton player to manage The Hatters was Alec Stock.

## FIRST VISIT

We have received an interesting post card from Mr. P. Welch of Rhondda, South Wales, who paid his first visit to the Valley for our opening league match of the season against Cardiff City. He says: "Many thanks for the stand ticket and souvenirs I asked for. It was my first visit to your ground and I was very impressed with a number of things, firstly the splendid view from the stand, secondly your excellent radio Valiant programme and finally the sportsmanship of the Charlton fans. Your terracing must also be the highest in the league".

## MEMORIES OF 1921

Our recent postbag also contained a letter from Mr. Ted Ewens of Charlton Park Lane who was clearing out his attic and came across some old school books. In one of them written 55 years ago in 1921 was an essay entitled "The Description of a Football Match" about Charlton's league game in the Third Division against Watford. Mr. Ewens received nine out of 10 for the essay. Ted tells us that he has missed very few home games in the past 55 years. He would like to meet any fans still supporting the club from its Kent and Southern League days to reminisce over old times.

## RECORD VICTORY

Luton's record victory in League football was way back on April 13, 1936, when they thrashed Bristol Rovers 12-0 in a Division Three South match at Kenilworth Road. In this match Joe Payne created an English League record which still stands today by scoring 10 of the 12 goals.

# INFORMATION

## desk

### LEAGUE DIVISION 2

Up to and including, Saturday, 4th September, 1976

|                    | P        | W        | D        | L        | F        | A        | Pts      |
|--------------------|----------|----------|----------|----------|----------|----------|----------|
| Blackpool ..       | 3        | 0        | 1        | 1        | 8        | 3        | 6        |
| Wolves ..          | 4        | 2        | 2        | 0        | 8        | 3        | 6        |
| Bolton ..          | 4        | 3        | 0        | 1        | 7        | 4        | 6        |
| Oldham ..          | 4        | 2        | 2        | 0        | 7        | 4        | 6        |
| Hull ..            | 4        | 2        | 1        | 1        | 8        | 3        | 5        |
| Hereford ..        | 3        | 2        | 1        | 0        | 5        | 1        | 5        |
| Millwall ..        | 4        | 2        | 1        | 1        | 6        | 4        | 5        |
| Luton ..           | 4        | 2        | 1        | 1        | 6        | 5        | 5        |
| Chelsea ..         | 4        | 2        | 1        | 1        | 4        | 5        | 5        |
| Plymouth ..        | 4        | 1        | 2        | 1        | 9        | 6        | 4        |
| Cardiff ..         | 4        | 2        | 0        | 2        | 7        | 6        | 4        |
| Fulham ..          | 4        | 1        | 2        | 1        | 5        | 6        | 4        |
| Carlisle ..        | 3        | 1        | 1        | 1        | 4        | 4        | 3        |
| Notts County       | 4        | 1        | 1        | 2        | 4        | 5        | 3        |
| Nott'm. F. ..      | 4        | 0        | 3        | 1        | 5        | 7        | 3        |
| Burnley ..         | 4        | 1        | 1        | 2        | 4        | 6        | 3        |
| Sheffield U.       | 4        | 0        | 3        | 1        | 4        | 6        | 3        |
| Bristol Rovers     | 4        | 1        | 1        | 2        | 3        | 6        | 3        |
| Blackburn ..       | 4        | 1        | 0        | 3        | 4        | 8        | 2        |
| <b>Charlton A.</b> | <b>4</b> | <b>0</b> | <b>2</b> | <b>2</b> | <b>2</b> | <b>7</b> | <b>2</b> |
| Southampton        | 4        | 0        | 2        | 2        | 2        | 7        | 2        |
| Orient ..          | 4        | 0        | 1        | 3        | 2        | 8        | 1        |

Stand Tickets for the League Cup game with West Ham at The Valley on Tuesday, September 21st, will be on sale AFTER tonight's match, price £2.00. Season Ticket Holders and Jubilee Club Members please apply to the office.

## ball donors

THIS EVENING'S MATCH BALL HAS BEEN KINDLY DONATED BY CRANFIELD COMPUTER SERVICES, WELLING, KENT.

|                         |  |
|-------------------------|--|
| <b>Cardiff City</b>     | Graham Fredericks Ltd.                                 |
| <b>Fulham</b>           | Sea Bee Freight Consultants, Bexleyheath and New Cross |
| <b>Southampton</b>      | Reliance Printing.                                     |
| <b>LC2 Replay</b>       | Cranfield Computer Services, Welling, Kent             |
| <b>Luton Town</b>       | Tony Rand (Editor Data Processing)                     |
| <b>Hull City</b>        | Valiant's Travel Club.                                 |
| <b>Sheffield United</b> | Cranfield Computer Services, Welling, Kent             |
| <b>Plymouth Argyle</b>  |  |
| <b>&amp; Orient</b>     |  |

## Man in the Middle

MICHAEL J. TAYLOR (Walmer, Kent) Started refereeing in 1958 whilst in the Royal Marines, and progressed via the Kent and Southern Leagues to the Football League list. Refereed the 1971/72 Southern League Cup Final, and lined a European Cup Winners Cup Semi-Final in 1973/74. Was a linesman, also, in the 1972/73 Anglo-Italian Tournament.

A married man, with two children, he retired from the Royal Marines last year and is now an Inspector re Life Assurance. Coaches in tennis, squash, badminton, fencing, and plays golf.

Address Printing Co. Ltd., Waddon New Road, Croydon

## Next Home Matches

Tuesday 14.9.76 MILLWALL  
(MWFL) 2.00 p.m.

Tuesday 21.9.76 WEST HAM UTD.  
(F.L. Cup) 7.30 p.m.

Friday 24.9.76 SOUTHAMPTON  
(F.L.) 7.30 p.m.

## Charlton Athletic

Red and White

## Luton Town

Orange Blue White

|               |    |                   |
|---------------|----|-------------------|
| Jeff WOOD     | 1  | Keith BARBER      |
| Geoff HAMMOND | 2  | Paul PRICE        |
| Phil WARMAN   | 3  | Steve BUCKLEY     |
| Peter HUNT    | 4  | Alan WEST         |
| Jim GILES     | 5  | John FAULKNER     |
| Bob CURTIS    | 6  | Paul FUTCHER      |
| Colin POWELL  | 7  | Jimmy HUSBAND     |
| Derek HALES   | 8  | Ricky HILL        |
| Mike FLANAGAN | 9  | John DEANS        |
| Tony YOUNG    | 10 | Pasquale FUCCILLO |
| Keith PEACOCK | 11 | John ASTON        |
|               | 12 | Ronnie FUTCHER    |

Referee: M. J. Taylor (Kent)

Linesmen: J. D. Jenkins (Middlesex) — Yellow  
G. R. Rigby (Surrey) — Red

# MORRIS & PIGGEON

**CHARLTON'S  
NEAREST V.V. AND  
AUDI DEALER!**



**HERBERT ROAD PLUMSTEAD SE.18 TELEPHONE 01-855 1234**

Charlton Athletic Football Company Limited.      Founded 1905  
The Valley, Floyd Road, London S.E.7. Telephone: 01-858 3711