



BOLTON WANDERERS

OFFICIAL PROGRAMME 10p



SECOND DIVISION

LUTON TOWN

Saturday, 11th December, 1976

Kick-off 3-0 p.m.

BURNDEN PARK

Good Sports
SCORE
EVERY
TIME

at
Whitakers
Sports Shop

Lower Ground Floor

whitakers
the centre of Bolton



Telephone: BOLTON 46231/2

KENYON BROS.

(Sheet Metal) Bolton Ltd.

Sheet Metal Workers to Industry

HASLAM'S MILL
 CHORLEY OLD ROAD
 BOLTON

G.K. MATHER

PLUMBING CONTRACTORS
 & HEATING ENGINEERS

N.W.G.B. APPROVED
 HEATING INSTALLERS

HOME IMPROVEMENT
 GRANTS

126 DERBY STREET BOLTON
 Telephone: BOLTON 24730

F. & J. PEACOCK SPORTS



QUALITY, CHOICE & PERSONAL SERVICE
 ENSURES SATISFACTION
 COMPREHENSIVE RANGE COVERING MOST
 POPULAR SPORTS

590 BLACKBURN ROAD
 ASTLEY BRIDGE - BOLTON

Telephone: Bolton 51177

THE SPORTS SHOP OF CHAMPIONS

STEEL TUBE - VALVES
 FITTINGS & FLANGES

MARKLAND +
ENGLAND LTD

BROMLEY CROSS, BOLTON

Tel.: Bolton 54911 Telex: 63468

PACK HORSE
HEALTH SALON

Bradshawgate - Bolton
 Telephone: Bolton 31608

(Pack Horse Hotel, Bradshawgate entry)

SAUNA, SOLARIUM
 SLENDER TONE (Spot
 Reducing)

Sauna Suites available for Private Bookings
 (By appointment).
 Treatment by experienced osteopath. Massage
 and Electrical Treatments advice on diets by
 experienced physiotherapist—
 B. P. Crockett, M.M.N.T.A.

BOLTON WANDERERS F.&A. CO. LTD.



President:

H. D. Warburton, Esq.

Directors:

G. Warburton, Esq. (Chairman),
 J. W. Woods, Esq. (Vice-Chairman),
 J. Battersby, Esq., H. T. Tyldesley, Esq.,
 W. G. Isherwood, Esq., B. Cowsill, Esq.,
 J. Lightbown, Esq.

Vice-Presidents:

Maj. J. Greenhalgh, Dr. J. B. Wright,
 Mr. J. E. Baron

Manager:

Mr. I. Greaves

Secretary:

Mr. E. Rothwell

Commercial Manager:

Mr. A. G. Davies

Medical Officers:

Dr. W. Brabbin

Dr. J. T. Young

Consultant Surgeon:

Mr. M. Lentin, F.R.C.S.

Football Association Cup Winners: 1923, 1926, 1929, 1958
 F.A. Cup Finalists: 1894, 1904, 1953
 Second Division Champions: 1908-9
 F.A. Charity Shield: 1958-9
 Third Division Champions: 1972-73

Welcome to today's visitors Luton Town who come to Burnden after the Wanderers had a blank Saturday last weekend.

The game at Hereford, as you know, was called off on the Saturday morning because the pitch was frozen. And in spite of the home club's attempts to get the game on by using braziers to try to soften the ground, the referee had no alternative but to call it off.

He did this in an attempt to prevent Bolton fans travelling. We did manage to stop the coaches leaving and I hope that none of you travelling by road made a needless journey.

For it was a really bad weekend with road conditions dreadful and it would not have been to our advantage if the game had been on judging by what I saw on television.

Football is not really meant to be played on grounds where there is not a studhold for the players.

Since my last programme notes the youth team beat Manchester United 3-0 in the FA Youth Cup at Burnden and they gave a very good performance indeed.

One of the youngsters, 16 years old Mike Carter made the trip south for the Hereford game as part of the first-team squad.

And, of course, the first team won their way into the semi-finals of the League Cup by beating First Division Derby County at the Baseball Ground 2-1.

There is a long time between now and the first leg of the semi against Everton at Goodison Park in mid-January.

And we want to get our priorities right. I have banned the players from even talking about the League Cup until the week before the game.

Today we have a tough task on our hands against Luton and we will be doing our best to give our fans a treat.

There will not be another chance before Christmas for me to pen these notes, so I would like to wish you all, on behalf of the players, staff and directors of Bolton Wanderers, a very merry Christmas and — thanks for coming!

The Front Page picture is by courtesy of the Bolton Evening News

Ian Greaves

Bolton Wanderers F. & A. Co. Ltd.

BURNDEN PARK

President: H. D. Warburton Esq.

Directors: G. Warburton Esq. (Chairman), J. W. Woods Esq. (Vice-Chairman)

J. Battersby Esq., H. T. Tyldesley Esq., W. G. Isherwood Esq.,

B. Cowsill Esq., J. Lightbown Esq.

Telephone: BOLTON 21101

Telegrams: "Wanderers", Bolton

Second Division

Tuesday, December 21st, 1976

Bolton Wanderers v Luton Town

Tonight we play the game against Luton Town which was postponed a couple of weeks ago because of heavy snow on the Burnden Park pitch.

As well as welcoming our visitors I would like to say how well our fans did in supporting us at Hereford in spite of the match being called off twice because of the weather.

These notes are written as a supplement to the original programme for the Luton game since we have only played once since the December 11th postponement and that was at Hereford.

There are a number of ticket arrangements over the Christmas and New Year holidays which fans should know about.

The home game against Nottingham Forest on 27th December is all-ticket for the Centre and Burnden Stands only. These are on sale now, so don't be disappointed by missing out.

Tickets will be on sale shortly for the game at Sheffield United on 28th December, and this game starts at 7-30 p.m. with the Forest one at 3 p.m.

On 1st January, Carlisle are visitors and there are no special ticket arrangements being made.

The FA Cup third round takes us to West Ham on 8th January, and I have been asked to point out that Bolton supporters should use the South Bank End at Upton Park with the turnstiles in Castle Street. Entry costs 70p.

There will be some stand seats available for the game at West Ham, but these will be few in number because of the limited seating accommodation there.

Back to tonight's game. I look forward to an entertaining match as a prelude to our hectic programme over the next few weeks.

Ian Greaves

RESULTS FOR SATURDAY, 18th DECEMBER, 1976. Week No. 19

CL 128 — 1st Prize £100. Mr. K. Grime, 36 Conniston Ave., Farnworth.
Agent: Mr. Kirby receives £10.

AR 317 — 2nd Prize £40. R. Harper, 7 Chorley New Road, Horwich
Agent: Mr. Harper receives £4.

BC 078 — 3rd Prize £20. Mrs. S. Rose, 18 Vernon Street, Farnworth.
Agent: D. J. Edwards receives £2.

CONSOLATION PRIZES

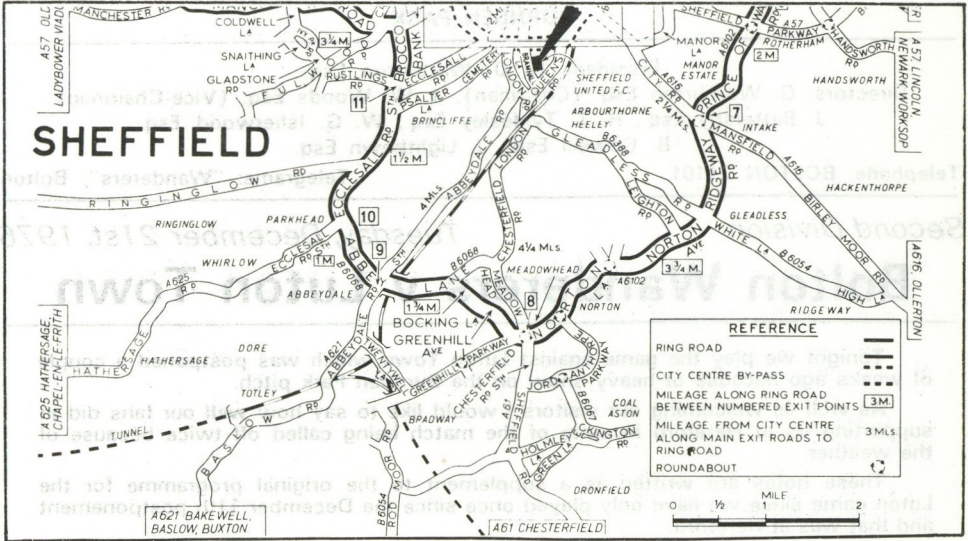
147 PRIZES OF £1 EACH to all holders of the same number as 1st, 2nd or 3rd Prize Winners but with a Different Prefix

FREE WEEKLY DRAW

FOR TWO 17 JEWELLED SWISS MOVEMENT GOLD PLATED WRIST WATCHES

CR 738 — R. Clare, 7 Greenroyd Avenue, Bolton.
Agent: Mrs. J. Hatchman.

HOW TO GET THERE



Fans travelling to Sheffield United by road on Tuesday, 28th December, are advised by the RAC to take the following route:—

A666(M)/M61/M62/M63 (follow 'Stockport' signs) to Chedale junction A560 (18 miles).

A560 (fork right in half mile at Farmers Arms traffic lights) to Stockport junction A6 (20 miles).

A6 via Disley and Whaley Bridge to Chapel-en-le-Frith junction A625 (35 miles).

A625 via Mam Tor, Castleton, Hope and Hathersage to Sheffield (53 miles).

Follow A625 (Eccleshall Road) into Sheffield. Sheffield United football ground (Bramall Lane) is on your right at St. Mary's roundabout.

SECOND DIVISION

	P	Home					Away					Pts
		W	D	L	F	A	W	D	L	F	A	
Chelsea	20	7	2	0	21	13	4	4	3	13	13	28
Wolves	19	6	1	3	24	11	3	5	1	21	14	24
Notts Forest	19	6	3	1	31	15	3	3	3	10	7	24
Blackpool	19	5	1	3	14	11	4	5	1	18	12	24
BOLTON WANDERERS	18	7	0	1	16	7	3	3	4	15	16	23
Sheff. Utd.	19	4	5	1	14	9	2	3	4	8	14	20
Fulham	19	5	3	2	18	10	1	4	4	11	16	19
Bristol Rovers	19	5	3	2	18	12	2	2	5	10	16	19
Oldham Athletic	17	6	3	0	18	9	1	2	5	5	16	19
Charlton	17	6	1	2	25	14	1	3	4	11	17	18
Millwall	17	5	1	3	16	8	3	1	4	11	14	18
Blackburn	18	5	1	2	12	5	3	1	6	6	19	18
Luton Town	17	4	2	2	12	10	3	1	5	15	16	17
Hull City	17	5	3	0	17	6	0	4	5	4	15	17
Southampton	19	3	5	2	17	15	2	1	6	14	21	16
Notts County	17	3	1	4	7	10	4	1	4	18	20	16
Carlisle	20	4	4	2	16	13	2	0	8	8	25	16
Cardiff	19	3	3	4	12	16	2	2	5	13	17	15
Burnley	18	3	5	2	16	14	1	1	6	6	15	14
Plymouth	19	2	4	4	13	12	1	4	4	10	19	14
Orient	17	1	2	4	7	9	2	4	4	10	15	12
Hereford	18	2	3	4	14	20	1	2	6	12	21	11

**A new kind of
life assurance**
**A better kind of
life assurance**
**Hambro
Life Assurance**

For details contact
Jim Parker, Hambro Life Assurance
63 Bradshawgate, Bolton, BL1 1QR.
Tel: 31627

for
computer
based
accounting
systems in
bolton



FACILITIES MANAGEMENT LTD.
ATLAS HOUSE
CHORLEY OLD ROAD, BOLTON
TELEPHONE: 491318

SUPERSPORTS

TRAVEL LIMITED

invite you to

Follow Bolton Wanderers in London - 1976/77
- In Style

Away to **CHELSEA** Saturday, 18th September, 1976

Away to **ORIENT** Saturday, 15th January, 1977

Away to **MILLWALL** Saturday, 5th February, 1977

Away to **CHARLTON** Friday, 22nd April, 1977

- Guaranteed Match-Ticket (seat)
- Return Rail Travel at the Time of Your Choice
- One or Two Nights Stay in Modern Hotels
- Full Ladies' Programme for non-football freaks
- Discounted Theatre Tickets

FROM £21.00 (for 2 nights)

Collect your Brochure from the
Promotions Office, Burnden Park, Bolton

or telephone
(01) 568-3478 (London)
(061) 236-8606 (Manchester)

Pen Pics

LUTON TOWN

TONY KNIGHT — Only 17, but already given the responsibility of understudy to Keith Barber. Luton signed him as an apprentice in the summer of 1975 after he had aroused the attentions of several clubs while playing for Romford Schoolboys.

STEVE BUCKLEY — He was a free-scoring left winger with Southern League club Burton Albion when Luton stepped in to buy him for the bargain price of £2,000 in the summer of 1974. Within six months he had been converted into a First Division full-back, and has been Luton's left back ever since his impressive debut.

PAUL FUTCHER — Luton equalled their record transfer fee when they paid £100,000 for Futchter in the summer of 1974. He was still only 17, and with only a handful of Fourth Division games behind him with Chester, his home town club.

RON FUTCHER — Twin brother of Paul, and identical in looks. When Luton paid £25,000 for him, it was generally reckoned that he had been transferred from Chester just because the boys wanted to stay together. But Ron soon made his mark. He was thrown in at the deep end when Luton were struggling in the First Division and marked his debut with a winning goal.

ALAN WEST — Luton broke all club records when they splashed out to buy West from Burnley in October, 1973, and he and Jim Husband, who was signed a few weeks later, helped the club to win promotion to the First Division within six months.

PAUL PRICE — Another player snapped up as a youngster, defender Price has had to fight harder than most to break through — he broke a leg early in the 1974-75 season, fought his way back to fitness, then broke it again. Made his League debut last season.

PASQUALE FUCCILLO — Son of Italian parents who settled at Bedford, players and supporters at Kenilworth Road give this strong midfield player the nickname of "Lil" to overcome their difficulties with his tongue-twisting nickname. He scored on his debut in February, 1976, and shows every sign of being a regular marksman.

BRIAN CHAMBERS — A Geordie, Chambers made his name and reputation as a midfield player at Sunderland, and they collected £70,000 for him when he was transferred to Arsenal in 1973. But he never broke through to the First team at Highbury, and Luton got him for £30,000 only a year later, when he was 25.

JOHN FAULKNER — Don Revie was the first man to give Faulkner a League chance, he was the centre-half in the Sutton United team that played Leeds in an FA Cup-tie, and Revie immediately bought him. But he was unlucky at Leeds, and a broken leg threatened to end his career. He overcame it, joined Luton for £6,000, and has been a regular member of Luton's defence ever since.

JOHN "DIXIE" DEANS — Luton Town's major close-season signing, they paid £20,000 to bring Deans over the border after he had had four spectacular seasons with Glasgow Celtic. His sharpness in front of goal soon earned him the inevitable nickname of Dixie at Celtic, where he scored 83 League goals in 110 appearances.

JOHN ASTON — Like his famous father before him, also named John Aston, John broke into professional football with Manchester United, and achieved international fame on United's left wing in their European Cup Final triumph against Benfica at Wembley in 1968. A broken leg interrupted his career at Old Trafford and Luton stepped in to secure his services for £30,000 in July, 1972.

The "HAVADEAL" Shop

YOUR D.I.Y. SUPERMARKET

Visit our Fitted Furniture Showrooms
Displays by MAGNET, EASIFIT, DI-LUSSO, EASTHAM and GROVEWOOD
Timber and Mouldings of all kinds — Plastics — Decorative Panels — Fencing
Dri-Bond Roofing, etc.

Your MAGNET distributors in Bolton for doors, windows and Joinery
Also SASCO FOBEL Products

F. J. WEBSTER LTD.
"HAVADEAL" - SPA ROAD - BOLTON
Telephone: 21611 Ext. 1 and 9

- SUPPLIERS OF NEW AND USED CARS
 - APPROVED INSURANCE REPAIRERS
 - SERVICING AND REPAIRS
 - 24-HOUR TOWING SERVICE
 - M.O.T. TESTING STATION
- Cellulosing and Body Repair Division
ECKERSLEY ROAD - BLACKBURN ROAD

WARWICK RIMMER AUTOS LIMITED

SHAW STREET GARAGE, DAUBHILL,
BOLTON. Tele: Bolton 27537.

H. S. MOTORS LTD.

TEL. 53438
Darwen Road - Bromley Cross

CARS BOUGHT AND SOLD
M.O.T. AND SERVICING
PETROL - OIL
MONTHLY ACCOUNTS WELCOME
BODY REPAIRS - SPRAYING
CRYPTON TUNING
SECOND-HAND PARTS

Contractors Plant
HIRE • SALES • SERVICE

FLETCHER PLANT COMPANY

Orlando Bridge, Orlando Street,
BOLTON BL3 6DP Tel. Bolton 25108-9



Accrington Depot:
Altham Colliery Industrial Estate
Altham, Accrington. BB5 5TX
Telephone: Accrington 31207

SMITH BROS. (DARCY LEVER) LIMITED

AQUEDUCT ROAD, RAIKES LANE, BOLTON

TELEPHONE: 26816

RELIABLE SERVICE



MOBILE
CRANE HIRE
7-tons CAPACITY

MAINTENANCE ENGINEERS
PIPEWORK & WELDING
MACHINERY REMOVERS
FABRICATION WELDERS
& FITTERS

Today's Visitors

Luton manager Harry Haslam, who led the club into the First Division in 1974, has one of the most unenviable jobs in soccer—the more he succeeds, the more likely he is to have his team broken up!

Over the past 12 months or so he has been forced to sell no fewer than 14 players, simply to keep the club's creditors at bay. In spite of this, he still has a team playing the sort of football which could win promotion again this season.

But here is the crunch. Because of the performances of two players in particular — defender Paul Futcher and midfield man Alan West — the club may be tempted to accept an offer like Newcastle's £300,000 for the pair.

While such a deal would virtually solve all Luton's financial problems, it would only lead to more frustration for Mr. Haslam, who complains: "I want to build another promotion team and to do that I need these players".

Luton are thus in a most difficult situation but if Mr. Haslam has been able to persuade his board — and, through them, the bank — that the long-term interests of the club would be better served by Luton returning to the First Division we may today still see Paul Futcher lining up with John Faulkner or Graham Jones at the centre of Luton's defence.

Jones, who was tried in the closing match last season, was given another chance against Millwall last month.

The departure of John Ryan to Norwich gave Mr. Haslam the opportunity to give an extended run at right back to Paul Price who was rewarded for his long wait in the reserves when he was called up for first-team duty for the closing matches of last season. Left-back Steve Buckley first made his way into the Luton side as understudy for England defender Bobby Thomson in October, 1974.

Luton's goalkeeper is Keith Barber who has been holding the position, with one break, since 1971. But he was injured at Notts County a fortnight ago when striker Dixie Deans went in goal. Luton still won 4-0!

The midfield choice will probably rest between Alan West — if he is

still at Kenilworth Road — Pasquale Fuccillo, Brian Chambers and Ricky Hill.

Luton's level top scorer, with six goals, is Dixie Deans, a striker signed from Celtic this summer for the amazingly modest fee of only £20,000. Dixie was a scoring sensation with the Celts, topping their scorers in two of his first three seasons when his lowest tally was 27. He was in three Cup-winning teams for Celtic, scoring hat-tricks in two finals and a single in the other, and he won three Scottish championship medals. Dixie played for Scotland against East Germany and Spain in 1974.

Luton's other forwards are Jimmy Husband, Ron Futcher and John Aston.

Luton have won three away games this season — at Burnley (2-1), Wolves (2-1) and Notts Co. (4-0). They collected a point from a 1-1 draw at Carlisle, but lost at Hull (1-3), Charlton (3-4), Plymouth (0-1), Blackburn (0-1) and Millwall (2-4).

The Hatters also lost 1-3 at Sunderland in the League Cup.

It is only 2½ years since Luton last won promotion to the First Division. They struggled from the beginning in the higher section but then made such a magnificent late recovery that it seemed they might survive. In the end a win by Tottenham, over Leeds in their last game, put Luton down.

Relegation accentuated the club's financial problems and revelations of huge debts put the club's future in grave doubt. But by slashing administrative staff, selling players and coming to special arrangements with creditors, the club was able to carry on.

In view of all that has happened it is something of a miracle that Luton are not in deep trouble at the bottom of the table. The shock of learning about the club's true position did, however, strengthen the resolve of manager Haslam and his players.

They would not allow Luton Town to die; not even subject the club to a living death. Today Luton hold their heads high for they are still sufficiently well placed to win one of the three promotion places.

WHAT A CHOICE SATURDAY

BUFF EXTRA- ON SALE NEAR THE GROUND—SPORTS PAPER WITH FINAL SCORES

THE BUFF FULL MATCH REPORTS - LEAGUE TABLES - POOLS CHECK

HAVE IT DELIVERED

THE COMPLETE SPORTS PAPER

IT'S TREBENDOUS FOR SPORT



BARR
SOFT DRINKS



LUTON TOWN F.C. — Top (Left to Right): Brian Gregory, Steve Buckley, Tim Smith, Kim Wassel, John Dixie Deans, Ricky Hill, Sandor Simon. Middle (Left to Right): Graham Jones, Paul Fletcher, John Faulkner, Tony Knight, Keith Barber, John Ryan, Paul Price, James McNichol, Reg Game (Physio). Front (Left to Right): Pasquale Fucillo, Brian Chambers, David Carr, Roy McCrohan (Coach), Harry Haslam (Manager), Jimmy Husband, John Aston, Peter Mead.



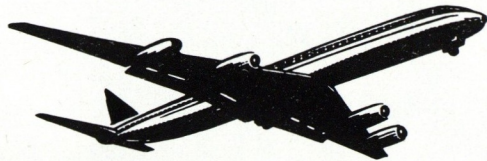
Wanderers' midfield man Brian Smith (top) lays on the first goal in the 2-1 League Cup quarter final win at Derby County. And (below) Neil Whatmore has a shot blocked by Derby County's Henry Newton with Steve Taylor (left) looking on.



Pictures by Bolton Evening News

GO PONTINENTAL
with
BOLTON WANDERERS
PROMOTIONS

TEL.: BOLTON 24518



to

MAJORCA TORREMOLINOS GREECE

15 SUN-DRENCHED GLORIOUS DAYS
YOUR COMPANIONS ON THESE EXCITING
HOLIDAYS WILL INCLUDE MANY OF
YOUR FAVOURITE PLAYERS!

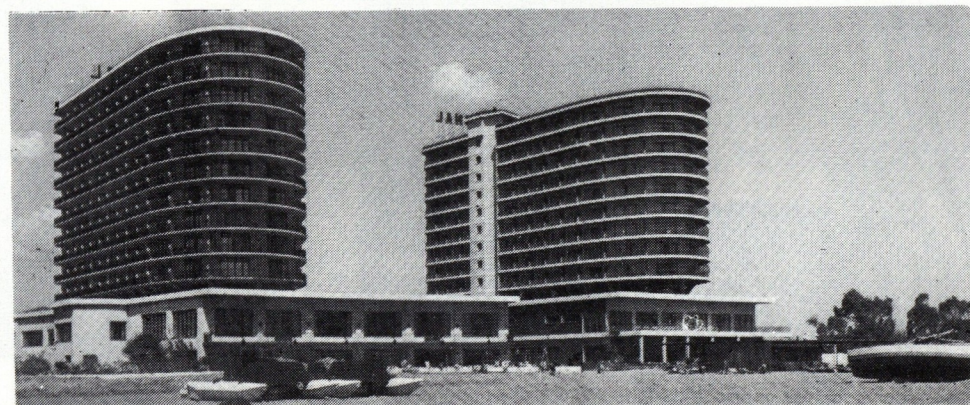
BOOK EARLY AND TAKE ADVANTAGE
OF OUR SUPER EASY-PAYMENT PLAN!

INCLUDING **FREE** TRANSPORT TO AND FROM
MANCHESTER AIRPORT FROM BURNDEN PARK


ENJOY THE AMENITIES OF PONTIN'S INTERNATIONAL HOLIDAYS WITH A
HOST OF EXTRAS:—

- ★ Transfers to and from Hotel and baggage handling.
- ★ Full pension at Hotel (a la carte menu at extra charge).
- ★ All rooms with private toilet/bath/shower/bidet sun balcony/sea view.
- ★ Dancing, cabaret, free entry to Hotel Night-club.
- ★ Sports and amusements for children all arranged by 'Uncle' or 'Auntie'.
- ★ Swimming and paddling pools, crazy golf course and tennis courts.
- ★ All hotel services, e.g.: cocktail bar, lounges, laundry, travel and car hire, hotel shops, games room, cinema.
- ★ Coach excursions, nearby golf and horse-riding at moderate rates.
- ★ Tariff based on twin-bedded room occupancy — see Pontinental brochure for full description of Hotels and Booking Form.

CONTACT THE PROMOTIONS OFFICE FOR YOUR FREE COLOUR BROCHURE
AND FULL DETAILS OF OUR FANTASTIC EASY-PAYMENT PLAN —
YOU CAN ENJOY A HOLIDAY OF A LIFETIME



HOLIDAYS 77
May to August Incl.
SUPER SPECIAL
BOLTON HOLIDAY
FORTNIGHT



MATCH BALL DONORS

All the footballs used
in this season's home
League games have been kindly
donated by

WILLIAM WALKER & SONS. LTD.

ROSE HILL TANNERY
BOLTON

Manufacturers of DRI-PED Sole Leather
Clothing, Upholstery, Mechanical Leathers
Member of Barrow Hepburn Group

All footballs supplied by WHITAKERS
The Centre of Bolton
Albert Ward Sports Dept.
Deansgate - Bolton

WALKERS FOR LEATHER **LEATHER FOR WALKERS**

INSIST ON A DRI-PED REPAIR

SECOND DIVISION

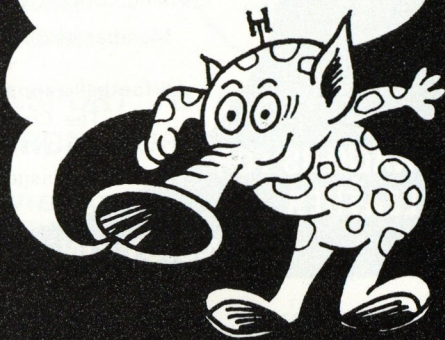
	Home					Away					Pts	
	P	W	D	L	F	A	W	D	L	F		A
Chelsea	18	7	1	0	18	10	4	3	3	12	12	26
Blackpool	18	5	1	3	14	11	4	4	1	15	9	23
BOLTON WANDERERS	16	7	0	1	16	7	3	2	3	12	12	22
Wolves	17	5	1	3	23	11	3	4	1	18	11	21
Notts Forest	17	6	2	1	30	14	2	3	3	8	7	21
Sheff. Utd.	17	4	5	0	12	6	2	2	4	8	14	19
Oldham Athletic	17	6	3	0	18	9	1	2	5	5	16	19
Charlton	17	6	1	2	25	14	1	3	4	11	17	18
Blackburn	17	5	1	2	12	5	3	1	5	6	17	18
Luton Town	17	4	2	2	12	10	3	1	5	15	16	17
Millwall	15	5	1	2	15	6	2	1	4	8	13	16
Fulham	17	4	3	2	16	10	1	3	4	11	16	16
Notts County	17	3	1	4	7	10	4	1	4	18	20	16
Southampton	18	3	4	2	14	12	2	1	6	14	21	15
Hull City	15	5	2	0	16	5	0	3	5	3	14	15
Bristol Rovers	17	4	3	2	16	11	1	2	5	7	14	15
Burnley	17	3	5	1	15	11	1	1	6	6	15	14
Cardiff	17	3	2	4	11	15	2	2	4	10	13	14
Carlisle	18	3	4	2	12	10	2	0	7	7	23	14
Plymouth	17	2	3	4	13	12	1	3	4	9	18	12
Hereford	16	2	2	3	9	14	1	2	6	12	21	10
Orient	15	1	1	4	7	9	1	4	4	7	13	9

**WE BUY
METAL SCRAP**

Don't let it go to
waste—we'll collect
and pay
top prices!

**WE'LL RID YOU
OF INDUSTRIAL
& HOUSEHOLD
WASTE**

with Lancashire's most
efficient container
clearance service.



'PHONE FOR A CONTAINER ON BOLTON 386201 (3 lines)

STONES & HUTCHINSON LTD
WATERLOO STREET
BOLTON

WOW
(WAR ON WASTE)

REGD.
TRADE
MARK



Radio
controlled
Fleet for Fast
efficient
service



Wanderers Promotions



**BOLTON WANDERERS' PROMOTIONS
STAFF WEARING THEIR
PETER THOMPSON
TESTIMONIAL T-SHIRTS**

The T-Shirts can be purchased before and
after the match from the Peter Thompson
Caravan on the forecourt and from the
Happy Shop or from the Promotions'
Office during the week.

PRICE: £1.60 to £1.85

RESULTS FOR SATURDAY, 4th DECEMBER, 1976 **Week No. 17**

- CC 335 — 1st Prize £100. Mrs. E. Leonard, 6 Regent Street, Ramsbottom.
Agent: M. Dawson receives £10.
BL 918 — 2nd Prize £40. Mr. W. H. Edwards, 43 Bridges Fold Road, Egerton.
Agent: T. Fallon receives £4.
CH 873 — 3rd Prize £20. Mr. J. Marshall, 21 Mill Street, Bromley Cross.
Agent: D. Lumb receives £2.

CONSOLATION PRIZES

147 PRIZES OF £1 EACH to all holders of the same number as 1st, 2nd or 3rd Prize Winners
but with a Different Prefix.

FREE WEEKLY DRAW

FOR TWO 17 JEWELLED SWISS MOVEMENT GOLD PLATED WRIST WATCHES.

- AC 291 — Mr. Flanagan.
Agent: Mr. Flanagan.

BURNDEN DATES

CENTRAL LEAGUE:— **RESERVES v HUDDERSFIELD**

SATURDAY, 18th DECEMBER, 1976 - Kick-off 3 p.m.

SECOND DIVISION:—**WANDERERS v NOTTINGHAM FOREST**

MONDAY, 27th DECEMBER, 1976 - Kick-off 3 p.m.

Admission for the Forest game will be by ticket only to the Manchester Road
and Burnden Stands.

The Centre Stand and the rest of the ground will be pay at the turnstiles.
Tickets will be on sale from Monday.

HARGREAVES

**COACH
TOURS**

Tel. 28211/3 **MOOR LANE BUS STATION** Tel. 28211/3

"YOUR SUPPORTERS CHOICE" WHEN FOLLOWING THEIR TEAM
WHY NOT YOUR CHOICE FOR ALL PASSENGER TRANSPORT REQUIREMENTS?

LET US QUOTE YOU

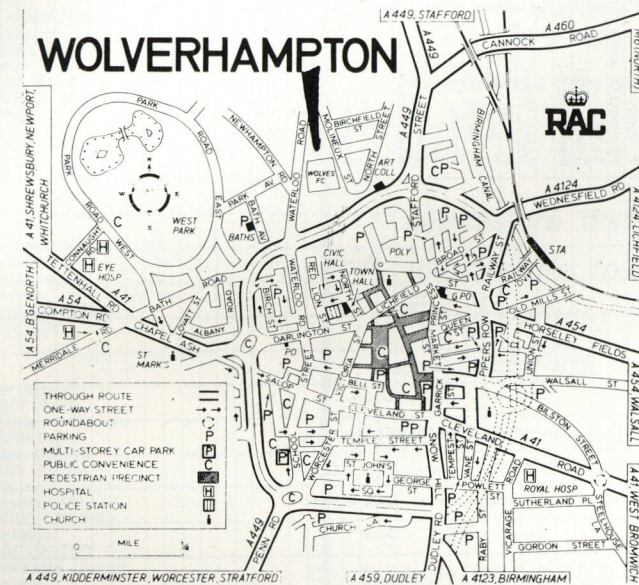
★ DAILY EXCURSIONS TO LOCAL HOLIDAY RESORTS ★

ALSO Consult our Travel Office at Moor Lane for Your 1976 Holidays
Main Agents for all Leading Operators — English and Continental Tours

Booking agents for:—

Websters, Barton-Premier, Robinsons, Smiths-Happiways-Spencers, Shearings, etc.

How to get there...



The R.A.C. have issued the following route for fans travelling by road to the Wanderers' game at Wolverhampton next Saturday.

Leave Bolton on A666(M)/M61/M62 (follow 'Liverpool' and 'M6 South' signs) to intersection 21a, M6 at Croft. (16 miles).

M6 south to intersection 12, junction A5. (76 miles).


A5 for 1 mile (follow 'Wellington' signs) to Gailey, junction with A449. (77 miles).

A449 to Wolverhampton. (85 miles).

Entering Wolverhampton on the A449 (Stafford Road) take the second exit at the roundabout into Waterloo Road North. Wolverhampton Wanderers' ground, Molineux, is on your left in about half a mile.

Meet the Referee...

BERT NEWSOME (Broseley, Shropshire). — Started refereeing in the Army, then progressed through local Shropshire Leagues, Midland Intermediate and Central Leagues to the Football League. Refereed the 1974 England v Wales youth international and lined the France v Spain international in Paris in 1961. Officiated in Italy for the 1972 Anglo-Italian competition. His interests are Gardening, home decorating, cooking, most sports and antiques. He is a national distribution manager.



FABRICATED METALS

W.J. KENYON & Co. Ltd.

ENGINEERS

PRODUCTION FABRICATION

MANCHESTER ROAD, BOLTON . Telephone BOLTON 20941/2/3/4 . Telex 63111

BRIAN PILLING

183 Blackburn Road, Bolton
Telephone: 23687

**RADIO - TELEVISION - ELECTRICAL
SALES AND SERVICE**

DOMESTIC ELECTRICAL INSTALLATIONS

Follow the Wanderers on a G.E.C. colour TV bought or rented from us!
"G.E.C. MAKE SPORTSVIEWING COMPLETE"

NEW & USED OFFICE FURNITURE

Two large factory floors full of desks, chairs, cupboards, filing cabinets, safes, stacking chairs, cafe and canteen furniture, bookcases, shop counters and fittings, clothes lockers, stores bins etc. Stockists of polypropylene chairs.

G.F. PENNINGTON & SONS

1st Floor, Fletcher Mills, Fletcher Street, BOLTON. Tel. Bolton 29254

MELLING & BATH LTD.

Manchester Road
Westhoughton - Bolton

SHEET METAL & PLATE FABRICATIONS

QUALITY WORK AT THE RIGHT PRICE

Tel. Westhoughton 813391

ACOUSTIC RESEARCH TECHNICS

AIWA SONY AKAI AMSTRAD ROTEL

CLEARTONE HI-FI

All leading brands of Hi-Fi Equipment supplied at Rock Bottom Discount
Prices. Demonstrations, expert advice, after sales service, repairs, etc.

Call or telephone for quotation:—

166 BLACKBURN ROAD - BOLTON
Telephone: 31423 - 22636

WHARFEDALE LEAK CELESTION YAMAHA NATIONAL

PIONEER CASTLE VIDEOTONE

Match Facts and Figures

CAPITALS denotes home games

1976/7	SCORE	ATTENDANCE	Sidall	Dunne	Greaves P.	Alldryce	Morgan	Whitmore	Jones G.	Reid	Thompson	Walsh	Taylor	Smith	Nicholson	McDonagh	Waldron	Clements	Carter	Curran	Goalscorers	
Aug. 21	Blackburn Rovers	1-3 14,368	1	2	3	4	5	6	7	9*	8	10	11	12*								Reid
" 28	ORIENT	2-0 11,600	1	2	3*	4	5	6	7	8	10	10	12*	9	11							P. Jones (pen.), Taylor
" 24	MILLWALL	3-1 13,628	1	2	3	4	5	6	7	12*	8	10		9	11							Taylor (2), Smith
Sept. 1	Bradford (LC2)	2-1 7,479	1	2	3	4	5	6	7	8	10		3	9	11	12						Whitmore (2)
" 4	Notts Co.	1-0 9,266	1	2	3	4	5	6	7	8	10	12*		9	11							P. Jones
" 11	HULL CITY	5-1 12,495	1	2	3	4	5	6	7	8	10	11		9	12							Whitmore, P. Jones (2), Taylor (2)
" 18	Chelsea	1-2 24,835	1	2	3	4	5	6	7	8	10	11		9	12							Taylor
" 22	Fulham (LC3)	2-2 14,961	1	2	3	4	5	6	7	8	10	11		9	12							Greaves, Reid
" 25	Plymouth	1-1 12,564	1	2	3	4	5	6	7	8	10	11		9	12							Marriner (o.g.)
Oct. 2	BLACKPOOL	0-3 18,680	1	2	3	4	5	6	7	8	10	11*		9	12*	2	1					Taylor, Walsh
" 5	FULHAM (LC3 rply)	2-2 15,010	1	2	3	4	5	6	7	8	10	11*		9	11	2	1	12*				P. Jones (pen.), Taylor
" 9	Cardiff City	2-3 11,007	1	2	3	4	5	6	7	8*	10		3	9	12	1	11					P. Jones (pen.)
" 16	BRISTOL ROV.	1-0 12,771	1	2	3	4	5	6	7	8	10		3	9	2	1	11	12				Greaves, Taylor
" 18	Fulham (LC3 2nd rply)	2-1 9,315	1	2	3	4	5	6	7	8	10		3	9	2	1	11					Taylor
" 23	Oldham Athletic	2-2 15,811	1	2	3	4	5	6	7	8	10		12	9	2	1	11					Whitmore, Alldryce
" 26	Swansea (LC4)	1-1 14,000	1	2	3	4	5	6	7	8	10		12	9	2	1	11	12*				Morgan Greaves Taylor2 Whitmore
" 30	FULHAM	2-1 24,228	1	2	3	4	5	6	7	8	10		12	9	2	1	11					P. Jones
Nov. 2	SWANSEA (LC4 rply)	5-1 14,955	1	2	3	4	5	6	7	8	10		12*	9	11	2	1					Taylor, Reid
" 6	Cardiff City	1-0 8,811	1	2	3*	4	5	6	7	8	10		12*	9	11	2	1					Whitmore, Taylor (2)
" 9	BURNLEY	2-1 20,681	1	2	3	4	5	6	7	8*	10		3	9	11	2	1					Allardyce
" 20	Southampton (1)	3-1 17,611	1	2	3	4	5	6	7	8	10		3	9	11	2	1					Whitmore, Morgan
" 27	CHARLTON	1-0 17,842	1	2	3	4	5	6	7	8	10		3	9	11	2	1					
Dec. 1	Derby (LC5)	2-1 26,734	1	2	3	4	5	6	7	8	10	12		9	11	2	1					
" 11	LUTON (2)																					
" 18	Wolves																					
" 27	NOTTS FOR.																					
" 28	Sheff. United																					
Jan. 1	CARLISLE																					
" 3	Fulham																					
" 8	FA3																					
" 15	Orient																					
" 22	BLACKBURN																					
" 28	Millwall																					
Feb. 5	NOTTS CO.																					
" 12	Hull City																					
" 19	Hull City																					
" 26	CHELSEA (5)																					
Mar. 5	PLYMOUTH																					
" 12	Blackpool (LCF)																					
" 19	CARDIFF (6)																					
" 26	Bristol Rovers																					
Apr. 2	OLDHAM																					
" 6	Notts Forest																					
" 9	SHEFF. UTD.																					
" 12	Burnley																					
" 16	SOUTHAMPTON																					
" 22	Charlton (SF)																					
" 30	HEREFORD																					
May 7	Luton Town																					
" 14	WOLVES																					

CENTRAL LEAGUE 1976-77

1976		F	A	Pts.
Aug. 21	BLACKBURN	4	1	2
" 28	Liverpool	1	4	2
Sept. 4	LEEDS UNITED	1	5	2
" 8	Aston Villa	0	3	3
" 11	West Brom	1	0	3
" 15	Sheff. Wed.	1	0	5
" 18	BURY	0	2	5
" 25	COVENTRY CITY	2	1	7
Oct. 2	Derby County	1	0	7
" 6	Sheff. Utd.	1	2	7
" 9	BLACKPOOL	1	4	7
" 16	Man United	3	1	9
" 23	NEWCASTLE UTD	3	2	11
Nov. 6	PRESTON	0	2	11
" 9	Huddersfield	0	3	11
" 20	BURNLEY	1	1	12
" 24	Notts Forest	1	1	13
Dec. 11	Wolves			
" 18	HUDDERSFIELD			
" 28	EVERTON			

1977				
Jan. 1	Man City			
" 15	SHEFF WED.			
" 22	Blackburn Rovers			
Feb. 5	LIVERPOOL			
" 12	Leeds United			
" 19	WEST BROM			
" 26	Bury			
Mar. 8	Coventry City			
" 12	DERBY COUNTY			
" 19	Blackpool			
" 26	MAN UNITED			
Apr. 2	Newcastle United			
" 9	Everton			
" 13	MAN CITY			
" 16	Preston			
" 23	NOTTS FOREST			
" 26	SHEFF UNITED			
" 30	Burnley			
May 4	Stoke City			
" 7	WOLVES			

Teams in CAPITALS Denote Home Games

The Goldfish Bowl

79 BRADSHAWGATE
BOLTON

(Five minutes from the ground)

Lancashire dishes for
Lancashire folk and
friends visiting Burnden
Park

GOOD FOOD GOOD PRICES

COACH BOOKINGS WELCOME
BEFORE AND AFTER
THE MATCH

TELEPHONE: BOLTON 24465

HALF-TIME SCOREBOARD

FIRST DIVISION

- A—Birmingham v Sunderland
- B—Coventry v Everton
- C—Derby v West Ham
- D—Leeds v Aston Villa
- E—Liverpool v Q.P.R.
- F—Man Utd v Bristol City
- G—Middlesbro v Arsenal
- H—Newcastle v Ipswich
- I—Norwich v Stoke
- J—Spurs v Man. City
- K—West Brom. v Leicester
- L—

SECOND DIVISION

- M—Blackburn v Sthampton
- N—Blackpool v Hereford
- O—Bristol Rov v Carlisle
- P—Cardiff v Hull
- Q—Chelsea v Wolves
- R—Millwall v Notts Forest
- S—Notts Co. v Burnley
- T—Oldham v Charlton
- U—Orient v Fulham
- V—Plymouth v Sheff. Utd.
- W—
- X—Bury v Shrewsbury

WANDERERS

Shirts: White

Shorts: Blue

1. McDONAGH, Jim
2. NICHOLSON, Peter
3. DUNNE, Tony
4. GREAVES, Roy
5. JONES, Paul
6. ALLARDYCE, Sam
7. MORGAN, Willie
8. WHATMORE, Neil
9. TAYLOR, Steve
10. REID, Peter
11. SMITH, Brian

Sub.:

LUTON TOWN

Shirts: Orange

Shorts: Blue

1. KNIGHT, Tony
2. PRICE, Paul
3. BUCKLEY, Steve
4. CHAMBERS, Brian
5. FAULKNER, John
6. FUTCHER, Paul
7. DEANS, John
8. WEST, Alan
9. FUTCHER, Ron
10. FUCCILLO, Pasquale
11. ASTON, John

Sub.:

Referee:

C. L. NEWSOME (Broseley, Shropshire)

RED FLAG

S. LEAVER (Preston)

LINESMEN

YELLOW FLAG

C. J. RILEY (Stafford)



1876 — 1976

*Warburtons have been baking good bread and cakes
in Bolton for 100 years*

Warburtons Bakeries, Hereford Street, Bolton

