

# LUTON TOWN FC

**v MILLWALL**

*FOOTBALL LEAGUE  
DIVISION TWO*

**Tuesday 12 April 1977**

**KICK-OFF: 7.30pm**

*Official Programme 15p*





a new concept in living  
 by  in Leighton Buzzard  
 new homes from £8,300 FOR DETAILS PHONE CONNELLS  
 at (05253) 2588



OXY-ACETY EQUIP. REPAIR/RECONDITION SPECIALISTS

also  
 Stockists of all leading Manufacturers Welding Equipment

**Chadwall Engineering  
 Co. Ltd**

Glebelands Road,  
 Sale, Cheshire.  
 Tel: (061) 973 - 8721

275 Kiln Road,  
 Thundersley, Benfleet, Essex  
 Tel: (0702) 559373/4

WELDING PRODUCTS

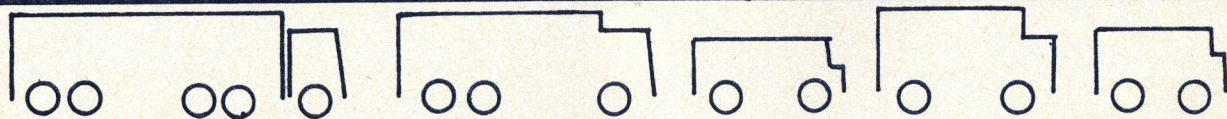
Manufacturers and stockists of Welding Equipment, Spares and Accessories

AVAILABLE FROM ALL LEADING STOCKISTS OF WELDING EQUIPMENT

Send for name and address of your nearest stockist:

**BUTCHER BROS. LTD.**

King Henry's Drive, New Addington, Croydon, Surrey, England.  
 Telephone: Lodge Hill 42227/8/9 Telex: 897894



FIRST IN THE FIELD FOR SELF-DRIVE VANS, TRUCKS & MINI-BUSES

**C.W. MORTIMER**

LONG AND SHORT TERM RENTALS  
 Hemel Hempstead 61459

**LUTON  
 TOWNFC**

**President:**  
 T. Hodgson  
**Vice-Presidents:**  
 Lord Hill  
 Sir Reginald Pearson O.B.E.  
 J.A.C. Bain  
 Eric Waller  
 John Brent  
 C. Holloway  
 T.R. Keens  
 B. England  
 Eric Morecambe O.B.E.  
**Chairman:**  
 Denis Mortimer  
**Directors:**  
 R. Banks  
 E.S. Pearson  
 H. Richardson  
 R.J. Smith  
 J.R. Yates  
**Manager:**  
 Harry Haslam  
**Company Sec. & Comm. Manager**  
 Doug Lygo A.C.M.A.  
**Club Secretary:**  
 John Wilkinson  
**Chief Coach:**  
 Roy McCrohan  
**Assistant Coach:**  
 David Pleat  
**Youth Team Coach:**  
 Danny Bergara  
**Physiotherapist:**  
 Reg Game  
**Asst. Secretary:**  
 George Rogers  
**Solicitors:**  
 Lathom & Co.,  
 King St., Luton.  
**Auditors:**  
 Messrs. Hillier, Hills,  
 Frary & Co.,  
 Chartered Accountants.  
**Medical Officers:**  
 Dr. P.J. Burrows, M.A., M.B.  
 B Chir (Cantab) D. (Obst)  
 R.C.O.G.  
 Dr. H. Melville, B.A., M.B.  
 B Chir (Cantab)  
 Dr. A.M.D. Mitchell, B.A., M.B.  
 B Chir (Cantab) D. (Obst)  
 R.C.O.G.)  
**Design/Print:**  
 Maybank Press Ltd.,  
 73/75 Grove Rd., London E18 2JY

**HARRY'S**



On the other side of the coin there are a lot of happy events that go on behind the scenes. As the season draws towards its final stages, I and a lot of the players go out to schools, youth clubs and supporters clubs for such things as prize-giving and social evenings. The Bletchley branch of the Bobbers Club entertained us right royally last week and I am pleased to be able to report an away win for Luton Town, the lads won the dominoes tournament against the supporters 5-1.

Naturally we play everything to win, but at Bletchley we were made so welcome that for once I wouldn't have minded if we had lost. It's nice to meet such a happy crowd of friends and we thoroughly enjoyed being with them. The same goes for the welcome we have been given on visits to local schools. We can't fit in all the invitations we get, but wherever possible I make time for the youngsters. They are the future for all of us, and for the game of football. I've watched a lot of school cup games and it's always nice to be reminded that football is still the most popular game in the world at all age levels. That's why we're here tonight and naturally my last Easter wish is for a good game for both sets of supporters and if we can take two points off Millwall, so much the better.

I had to write this column before the Easter games were played so I can't comment on whether or not we have had a happy holiday so far as football is concerned. But I hope all our supporters have enjoyed the break, and my own Easter wish is the hope that so called supporters up and down the country have done nothing more to spoil the good name of football.

I am well aware that most clubs have the small minority of trouble makers, but I think Luton Town have a better record than most. My message is simple: give us all the support you can, but please take it easy. Sing your hearts out, but always try to keep out of trouble. Damage is sickening to everybody and even when it's not our fault, the football club gets the backlash.

**TOWN**



## Millwall

**RAY GODDARD (Goalkeeper):** Aged 26, he began his career as an apprentice with Fulham, turning professional in 1967 when moving to Orient. Transferred to Millwall in November 1974 for £9,000.

**NICKY JOHNS (Goalkeeper):** Aged 19 and the tallest member of the team at 6' 3". Signed from Minehead FC for £2,000 last season. Has yet to make his League debut.

**GEORGE BORG (Defender):** Aged 18 and joined Millwall as an apprentice in 1974 turning professional in 1975. Yet to make League debut, but has been substitute and has played on tour and in friendlies.

**DAVE DONALDSON (Defender):** Aged 21. Joined Millwall from Arsenal in 1973 and made his debut that same season. Regained his first team place after injury and played an important part in last seasons campaign.

**ALAN DORNEY (Defender):** Aged 28, Alan joined Millwall ten years ago, signing professional two years later. Granted a testimonial year this season after making 242 appearances.

**RAY EVANS (Defender):** Aged 26, a former England youth international, playing over 150 games for Tottenham in First Division and European competition. Moved to Millwall in January 1975 for £38,000. Is now fully recovered from the injury that kept him out of a lot of the action last term.

**TONY HAZELL (Defender):** Aged 28, he joined Millwall in December 1974 for £35,000 from QPR. Has made over 350 appearances for QPR and Millwall including a League Cup Final winners medal for QPR (v West Bromwich in 1967).

**BARRY KITCHENER (Defender):** Aged 28 and Club Captain. Joined Millwall in 1964 and ended his testimonial year by helping Millwall secure promotion to the Second Division. Has made 379 appearances to date.

**JON MOORE (Defender):** Aged 20. Signed from Bristol Rovers in December 1974 for £20,000.

**TERRY BRISLEY (Midfield):** Aged 26, he was transferred to Millwall in June 1975 having previously been at Orient.

**STEVE HAMBERGER (Midfield):** Aged 18, Steve was signed as a professional in March 1976. Has not yet made his League debut, but is hopeful.

**PHIL WALKER (Midfield):** Aged 21. Scored in his League debut against Mansfield having been rejected by Crystal Palace as a schoolboy. Tipped to gain under-23 international honours.

**BARRY FAIRBROTHER (Forward):** Aged 25, he joined Millwall in July 1975 having turned professional at Orient. A groin injury kept his appearances down last season.

**TREVOR LEE (Forward):** Aged 22, signed professional for Millwall in November 1975 and scored 6 goals for them last season.

**BARRY SALVAGE (Forward):** Aged 28 and enjoying his second spell at the Den having tried Fulham, QPR and Brentford in between times. Scored a goal in 20 seconds for Brentford. Scored 8 for Millwall last season.

**JOHN SEASMAN (Forward):** Aged 21, John began his career with Tranmere, moving to Luton and then to Millwall following a loan period.

**TERRY SHANAHAN (Forward):** Aged 24. Transferred to Chesterfield from Halifax for £10,000 and was previously with Ipswich. Top scorer for Chesterfield last term with 15 goals.



## Division Two Attendance League & Scorers...

Home League attendances		Leading scorers (League, FAC, LC)	
	Aggregate	Average	
Chelsea	481,239	30,077	Finnieston 18, Swain 14.
Wolves	325,654	20,353	Richards 15, Sunderland 14.
Bolton	298,999	19,933	Whatmore 24, Taylor 17.
Southampton	294,546	19,636	MacDougall 17, Channon 14. Peach 8.
Nottm. For.	276,193	17,262	Woodcock 13, Withe 12.
Sheffield Utd.	258,831	17,255	Edwards 10, Woodward 9.
Blackpool	228,087	14,255	Walsh 21, Hatton 8.
Fulham	242,030	14,237	Mitchell 15, Best 7.
Plymouth	220,780	13,799	Hall 8, Austin 7.
Cardiff City	216,633	12,743	Evans 21, Buchanan 7.
Luton Town	199,349	11,726	Husband 13, Aston 10.
Millwall	186,156	11,635	Seasman 12, Lee 9.
Burnley	179,060	11,191	Noble 11, Smith 9.
Blackburn	174,113	10,882	Svarc 13, Byrom 7.
Oldham	166,408	10,401	Halom 18, Shaw 6.
Charlton	164,602	10,288	Hales (now Derby) 18.
Notts. County	146,974	9,798	Vinter 13, Bradd 7.
Hull City	135,612	9,041	Hemmerman 7, Sunley 6.
Bristol Rovers	136,103	8,506	Warboys (now Fulham) 12.
Hereford	110,030	7,859	McNeil 11, Davey 7.
Carlisle Utd.	129,831	7,637	Rafferty 18, McVitie 8.
Orient.	91,848	6,561	Whittle 7.

Floral displays in the Club room this season have been kindly donated by Raymond Fox of Bishopsgate Road, Luton

### The New Vice Presidents Club

Jack Arthur Machine Tools Ltd  
37/51 Brunswick Street, Luton  
Phone: 0582-30100



Neahurst Ltd  
London Road  
Lower Stondon, Hitchin  
Phone: Hitchin 814008



Euro-Exhaust Centre  
233 Dunstable Road, Luton  
Phone: 0582-38651

West Luton (Shopfitters) Ltd  
Tudor House  
1 Bishopscote Road, Luton  
Phone: 0582-503671



Hatters Pools (MFH) Ltd  
74 Kenilworth Road, Luton



J Hooper & Co  
30 Cardigan Street, Luton  
Phone: 0582-412525

Robert Yates (Shopfitters)  
158 Leagrave Road, Luton  
Phone: 0582-22083



Mike & Mary Talbot  
Burston Hill Farm  
Weedon, nr. Aylesbury  
Phone: Aston Abbots 218



EW Hudson Ltd  
6 Union Street, Luton  
Phone: 0582 30511

This is a branch of Euro Exhaust Centre Holdings Limited, which operates the largest drive-in replacement exhaust fitting business in the UK. Comprising of 40 branches which give national coverage, in addition to which, the Company operates 4 branches in Belgium and Holland. Additional branches are being opened at the rate of one per month and enquiries are welcomed from the trade, both on a local and national basis. Telephone: St Albans 69297. Euro Exhaust Centre Holdings Limited, probably the world's best exhaust service.



# LUTON REPORTING

## OFFICIAL CLUB SHOP

Luton Town, like every other football club, are indebted to the people who come into the club on match days to do various tasks. One family who has spent many hours at Kenilworth Road is John & Sylvia Smylie & son David, who are currently doing a wonderful job in the souvenir shop.

A lot of our supporters may have been surprised to see a new supporters shop in business near the ground. So were we! For the benefit of all, Luton Town state that the only official retailer of souvenirs are Luton Town F.C. We have a shop open on match days at 66, Kenilworth Road next to the ticket office, also at the entrance to the enclosure, and souvenirs can be obtained

throughout the week from the club's offices in Kenilworth Road. Obviously everyone is free to shop where he likes, but we would just like to point out that our shops are run to help Luton Town and to give a fair deal to our supporters. We have a policy of selling our goods at low profits and you will find that our prices are highly competitive.

## ANOTHER 'ODD ODE'

Following the 'Odd Ode' published in a previous programme we have pleasure in printing this one which we have received from a Stopsley Fan, living at 69, Edge-wood Drive Luton.

Aleksic's swift and acrobatic, Oak Road Enders shout,

## All Our Yesterdays

A look back at Luton Town a decade ago.

By Brian Swain, Sports Editor, Luton News.

THE RETURN to fitness of Bruce Rioch, a promising young attacking midfield player, gave the Town's small band of faithful supporters something to cheer about ten year ago this week.

He had been out with a leg injury since mid-February, missing eight games, and the Town had faced a real threat of having to ask for re-election for the first time in their history.

Easter failures had left supporters scared stiff, so much so that when Rioch returned, for a home game against promotion contenders Southend, there were only 4,666 spectators dotted around Kenilworth Road, the lowest gate since the previous October.

But if the missing "supporters" thought the Town were in for another hiding, they were mistaken. Tony Read made a couple of good early saves, and

the Town took charge. Max Dougan and John Moore closed up the centre of the defence, and Keith Allen squeezed in the only goal of the match with an angled drive ten minutes from time.

That was followed by another home game, and once more the visitors were a team with hopes of winning promotion - Barrow, whose history was to go into a rapid decline and fall.

Never one of the country's most prestigious teams, they were having a rare season of success. They came to Luton on April 15, 1967, in third place in Division Four and with a reputation of playing enterprising and attacking soccer even away from home.

As it turned out, their willingness to attack cost them dear.

They were still playing the old-fashioned formation of five forwards, three half-backs and two full-backs. The Town had converted to 4-3-3 and as Barrow attacked wingers Graham French and Ray Whittaker found plenty

of space to set up chances for their strikers.

The fair-haired Keith Allen spear-headed the central thrusts, and Barrow were killed off before half-time. Allen laid on a goal for Whittaker in the 18th minute, heading the ball to him after a corner by French, and two minutes later Allen helped himself to a second goal. It was a memorable effort - he nipped in between two defenders who were waiting for each other to clear, stole the ball, and raced through on his own. The goalkeeper dived hopefully at his feet, missed, and Allen scored.

The Town went three up in the 35th minute when Allen was pulled down on a run for goal and Whittaker scored from the penalty.

Barrow pulled a goal back in the second half through McGarry, but were never in the game, and the Town's second successive win, watched by 5,710, lifted them to 17th place in the table.

"Elastic!" 'Buck's' a hard-man, tough and strapping, In defence or overlapping. Pricy throws a twenty-yarder, No one blasts a long-shot harder. Falkener tackles hard, but fairly, Heads out crosses fair and square-ly. Futchter shines, a rising star, His class will surely take him far. Westy sprays out on-the-cue balls, Flicks and back-heels, chips and through-balls. Chambers plays with skill and cunning, Full of craft and tireless running. Lily body-swerves so neatly, Beats his man and scores so sweetly. Husband is a goalie's nightmare, Half a chance you'll find him right there. Ron's a gutsy, fearless runner, Watch him score a right-foot stunner. Aston takes on three defenders, Finds the net with left-foot benders. Geddis is the super-sub, A lively bonus for the Club. Harry Haslam brewed the potion. Hatters you *deserve* promotion!

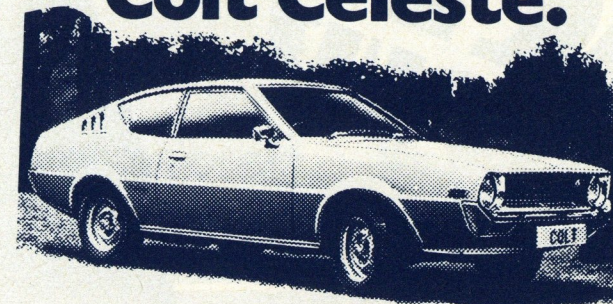
Today we would like to thank our friends from R.A.F. CHICKSANDS not only for their kind donation of the match ball but also for their loyal support throughout this and past seasons.



BALL DONOR  
BAKER FLIGHT FUND  
R.A.F. CHICKSANDS.

MASCOT  
Today's mascot is Simon Warrington  
62, Dane Road, Luton.

Test drive  
the new  
Colt Celeste.



The new Celeste's low slung, pacey appearance isn't just for show. The 2 litre model has a top speed of 105 mph with 0-50 mph in 7.7 seconds - the 1.6 litre model isn't far behind.

Features include-Hatchback. Tinted glass. Laminated windscreen. Folding back seats. Sports wheels. 12 month unlimited mileage warranty. Over 35 mpg (at a steady 60 mph) on 2 star petrol.

Plus the advantage of Colt's special money saving insurance.

Lancer 1200 model - £2099

Lancer 1.6 model - £2895

The new Colt Celeste's 2 litre model - £3349

Rec. retail prices include Car Tax and VAT. Delivery, seat belts and plates extra.

Manufacturer's performance figures quoted throughout.

**COLT**



A tough new breed of car

From the Mitsubishi Motor Corporation

G S TWIGG LTD

Colt Main Dealers

Empress/Archway Roads

Leagrave, Luton, Beds Telephone: Luton 52594/5

OPEN 7 DAYS PER WEEK.

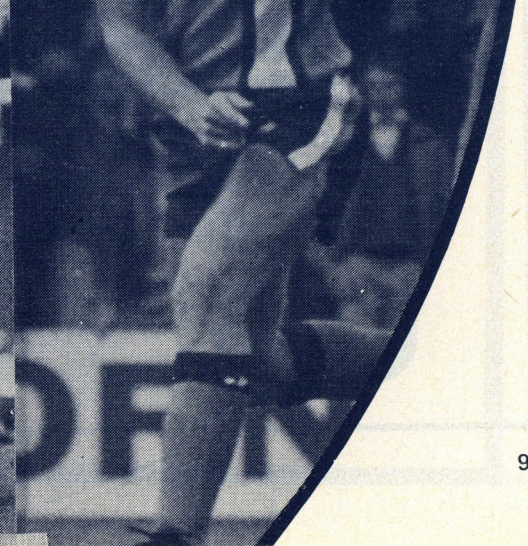
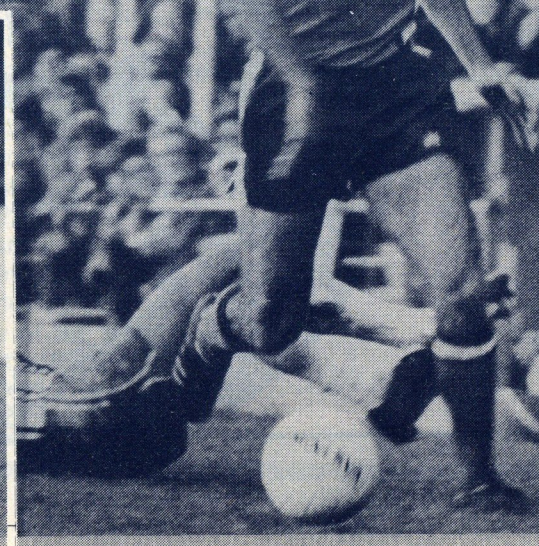
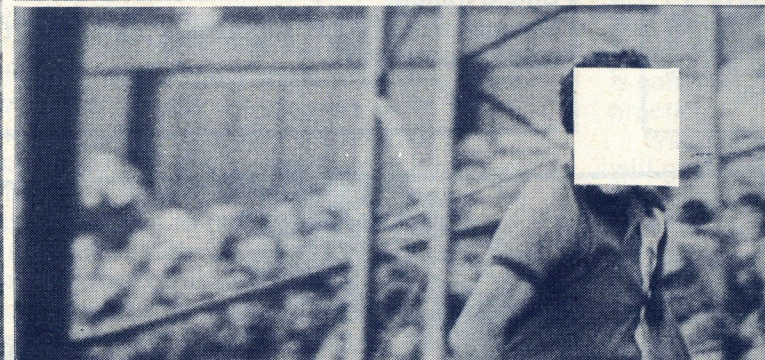
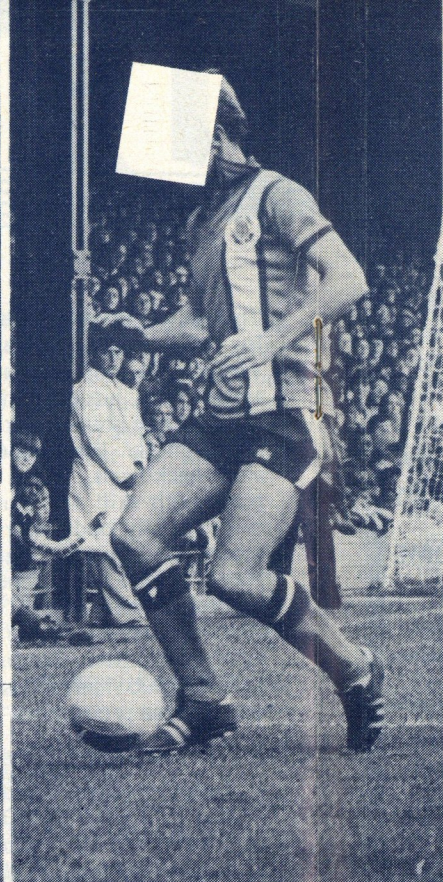
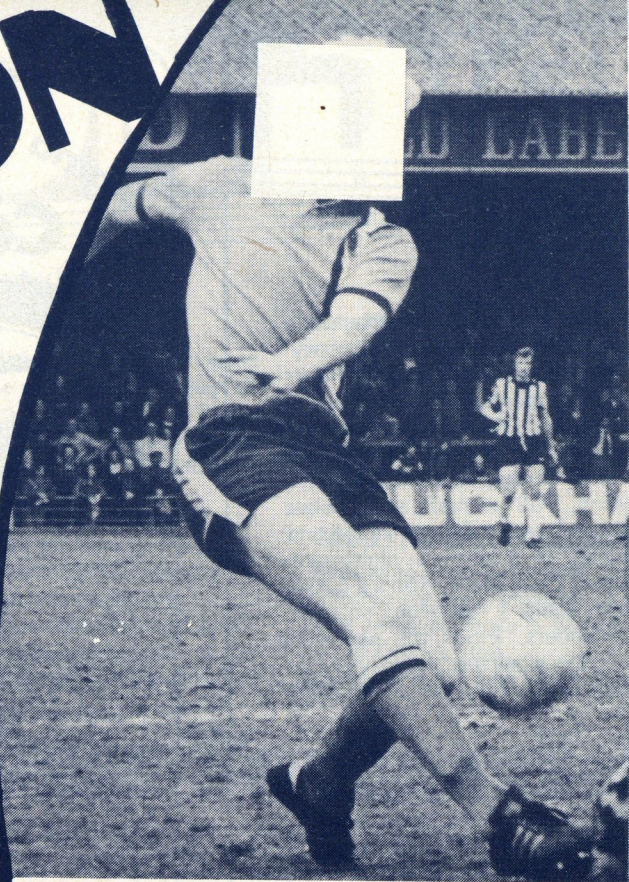


# ACTION QUIZ

For our third ACTION QUIZ, see if you can identify the faceless Luton Town players on this page PLUS the famous player known for his dignity and style in a most undignified position.

Send your answers (7 in total) to Mr G Rogers at Luton Town Football Club, Kenilworth Road, Luton.

The first correct entry opened will receive tickets for a match of his or her choice at Luton.







# CLUB SHOP



IF YOU have not visited this shop at 66 Kenilworth Road — now is the time. Many souvenirs are in stock and others are arriving every day. Keep in touch with whats new.

SCARVES: Woollen £1.30p; Woollen S £1.30p.  
HATS: Bobble 65p; Crimpelene 75p. MISC: Car stickers 20p; Metal badges 30p; Zippo lighters £3; Blazer badges 50p; Gear knobs 80p; Key fobs 30p; Necklets 50p; Bottle openers 50p; Cuff links £1.10p; Autograph books 15p; Ash trays 20p; Club ties £2.00 PLUS lots of PROGRAMMES and PLAYERS PHOTOGRAPHS.

# PONTIN'S

FOOTBALL HOLIDAY WEEKS 1977  
HEMSBY HOLIDAY VILLAGE, NORFOLK  
22 — 28 MAY

Featuring the Pontin's 6-a-side Football Competition Final at Wembley prior to the Charity Shield match.

Details from your supporters club — COME AND SUPPORT!

# Top Teams Train On



# COACHING

IN MODERN football, one of the most important aspects in attacking play is what to do when you are not in possession of the ball.

Today's football demands that defenders mark tight and give attacking players as little space as possible. Apart from the technique and skills at all levels, it must be the first priority for every coach to get players to understand the importance of what to do when in possession with the ball.

Players who remain static when their side has possession will not progress far in the modern game. Movement off the ball becomes one of the musts for attacking play. When a player is running towards a space, he may be looking to receive the ball, perhaps he may lure a defender into a false position and therefore give his team mates at least 3 options:— (a) play the ball into the open space where the player is running, (b) use the space where his colleague has just run from, this will give him the opportunity to progress forward or to get into a scoring position, (c) play the ball into the open space where another supporting player can receive it.

It is obvious that to play without the ball is not an isolated movement by a certain player and to make these movements successful, it is fundamental that all players are aware of the situation.

The coach must encourage the players to realise the great value of the movements off the ball to the benefit of the team.

The supporters tend to follow every single movement of the player who is in

direct contact with the ball or very close to it. The player knows this and if things are not going right when on the ball he may, by sensible running, create many opportunities for his colleagues but not get noticed.

Finally, to play without the ball does not mean sprint into spaces occasionally, it means every player must understand when, where and why to move off the ball. For this to function correctly everyone must know what is going on. This requires many hours of practice.

Practice is essential and for this purpose I will give you a very enjoyable game to play. In one half of the pitch, play six forwards v four defenders and a goalkeeper. The defenders will get a point for getting the ball on the half-way line; the forwards two points for every goal they score. With this practice, you can work in the following aspects:— (a) movement off the ball, (b) exploit the numerical advantage, (c) width in attack, (d) shooting ability, (e) improvisation, (f) marking and covering in defence, (g) the ability of defenders to come out of defensive positions playing the ball under numerical disadvantage.

*Danny Beggs*



## LEAGUE DIVISION TWO

Date	Opponents	Ground	Result	Attendance
1976				
Aug.21	Sheffield United	Home	2-0	10,687
Aug.24	Hull City	Away	1-3	5,499
Aug.28	Burnley	Away	2-1	12,262
Sept.1	Sunderland	Away	1-3	22,390
Sept.4	Nottingham Forest	Home	1-1	11,231
Sept.10	Charlton Athletic	Away	3-4	9,191
Sept.18	Fulham	Home	0-2	19,929
Sept.22	League Cup 3			
Sept.25	Wolverhampton	Away	2-1	19,826
Oct.2	Plymouth Argyle	Away	0-1	12,187
Oct.9	Hereford United	Home	2-0	9,895
Oct.16	Carlisle United	Away	1-1	6,972
Oct.23	Southampton	Home	1-4	12,123
Oct.27	League Cup 4			
Oct.30	Blackburn Rovers	Away	0-1	8,719
Nov.6	Bristol Rovers	Home	4-2	7,066
Nov.13	Millwall	Away	2-4	10,380
Nov.20	Cardiff City(1)	Home	2-1	8,845
Nov.27	Notts County	Away	4-0	10,009
Dec.1	League Cup 5			
Dec.4	Blackpool	Home	0-0	9,183
Dec.21	Bolton Wanderers(2)	Away	1-2	17,475
Dec.27	Orient	Away	0-1	8,356
Dec.29	Chelsea	Home	4-0	14,625
1977				
Jan.1	Bristol Rovers	Away	0-1	7,185
Jan.8	F.A. Cup3(Halifax)	Away	1-0	5,519
Jan.15	Hull City	Home	2-1	8,455
Jan.19	League Cup SF			
Jan.22	Sheffield Utd	Away	3-0	16,257
Jan.29	Chester (F.A. Cup)	Away	0-1	10,609
Feb.5	Burnley	Home	2-0	8,638
Feb.12	Nottingham Forest	Away	2-1	18,255
Feb.15	Blackburn	Home	2-0	9,044
Feb.19	Charlton Athletic	Home	2-0	11,625
Feb.26	Fulham (5)	Away	2-1	11,894
Mar.5	Wolverhampton W.	Home	2-0	19,200
Mar.8	Oldham Athletic	Home	1-0	12,301
Mar.12	Plymouth Argyle (LCF)	Home	1-1	12,793
Mar.19	Hereford United (6)	Away	1-0	6,737
Mar.26	Carlisle United	Home	5-0	11,735
Apr.2	Southampton	Away	0-1	19,000
Apr.8	Chelsea	Away		
Apr.11	Orient	Home		
Apr.12	Millwall	Home		
Apr.16	Cardiff	Away		
Apr.23	Notts County (SF)	Home		
Apr.30	Blackpool	Away		
May.7	Bolton Wanderers	Home		
May.14	Oldham Athletic	Away		
May.21	F.A. Cup Final			

### COMBINATION

Appearances	Goals
Aston	2
Barber	10
Brown	11(3)
Carr	28
Chambers	5
Driver	7(5)
Faulkner	1
Futcher R.	3
Gregory	18(3)
Heale	15(3)
Hill	21
Husband	2
Ingram	14(4)
Johnson	14(4)
Judge	1
Jones	26
Knight	21
McNichol	32
Mead	32
Mawhinney	1
Ryan	11
Simon	19
Sisman	1
Smith	29
Turner	3
West	1
Mazzon	1

### NEXT HOME GAME

**NOTTS COUNTY**  
**Saturday**  
**23rd April 1977**  
**Kick-off: 3.00pm**

## COMBINATION

Date	Opponents	G	R
1976			
Aug.21	Oxford United	A	1-1
Aug.24	Southampton	H	0-1
Aug.28	Bristol City	A	1-2
Sept.1			
Sept.4	Ipswich Town	H	0-2
Sept.11			
Sept.18			
Sept.22	West Ham Utd	H	2-3
Sept.25	Crystal Palace	H	1-3
Sept.28	Q.P.R.	A	1-3
Oct.2	Fulham	A	1-5
Oct.9	Leicester	A	1-4
Oct.16	Cardiff City	H	0-0
Oct.23	Arsenal	A	1-1
Oct.30	Tottenham	H	1-2
Nov.3	Chelsea	A	0-4
Nov.6	Swindon Town	A	P
Nov.13	Plymouth Argyle	H	1-3
Nov.20	Reading	A	P
Nov.23	Birmingham City	A	0-0
Nov.27	Bristol Rovers	H	2-0
Dec.1	Orient	A	P
Dec.4			
Dec.18	Tottenham	A	0-2
1977			
Jan.1	Hereford United	H	3-1
Jan.8	Norwich	H	2-2
Jan.15	Q.P.R.	H	2-1
Jan.18	Southampton	A	1-3
Jan.22	Oxford United	H	1-2
Jan.25	Orient	H	3-1
Jan.28	Chelsea	H	4-4
Feb.1	Bristol City	H	1-2
Feb.14	West Ham	A	2-2
Feb.19	Ipswich Town	A	1-2
Feb.26	Fulham	H	0-4
Mar.5	Crystal Palace	A	2-1
Mar.12	Plymouth Argyle	A	1-1
Mar.19	Leicester	H	1-3
Mar.30	Cardiff City	A	0-1
Apr.2	Arsenal	H	1-0
Apr.8			
Apr.9	Birmingham City	H	
Apr.12			
Apr.13	Hereford United	A	
Apr.16	Swindon Town	A	
Apr.23	Bristol Rovers	A	
Apr.30	Reading	H	
May.7	Norwich City	A	

## LEAGUE DIVISION TWO - MON 11/4/77

	HOME				Goals				AWAY				Goals				Pts
	P	W	D	L	F	A	W	D	L	F	A	W	D	L			
Chelsea	35	12	6	0	41	21	6	5	6	21	25	47					
Wolves	33	13	1	3	40	17	5	9	2	32	21	46					
Nottm. For.	36	12	3	3	49	21	6	6	6	20	17	45					
Notts. Co.	36	10	4	4	26	18	8	4	6	31	31	44					
<b>Luton Town</b>	<b>35</b>	<b>12</b>	<b>3</b>	<b>2</b>	<b>33</b>	<b>12</b>	<b>7</b>	<b>1</b>	<b>10</b>	<b>24</b>	<b>25</b>	<b>42</b>					
Bolton	34	12	2	3	38	18	5	5	7	25	29	41					
Blackpool	35	9	6	3	25	15	4	8	5	22	23	40					
Charlton	35	11	4	2	40	23	1	9	8	16	29	37					
Millwall	35	7	5	6	26	20	5	6	6	22	25	35					
Sheff. Utd.	36	8	7	3	29	19	4	4	10	19	31	35					
Southampton	32	8	6	3	30	22	4	4	7	28	29	34					
Oldham	34	10	5	2	32	16	3	3	11	13	31	34					
Blackburn	35	10	3	4	27	16	3	5	10	11	32	34					
Hull	34	8	7	2	28	13	0	8	9	10	28	31					
Plymouth	36	5	8	5	25	21	3	7	8	18	34	31					
Orient	32	4	5	6	14	15	5	6	6	17	24	29					
Fulham	36	7	6	5	31	24	2	5	11	15	34	29					
Burnley	35	6	8	4	23	19	2	4	11	15	36	28					
Cardiff	34	6	5	7	25	26	3	4	9	19	27	27					
Bristol R.	35	7	6	4	25	22	2	3	13	16	38	27					
Carlisle	34	5	6	6	23	27	4	1	12	16	40	25					
Hereford	33	3	6	6	20	27	1	5	12	22	41	19					

Result Chelsea v Luton Attendance  
 2-0 32,680

### APPEARANCES - Division 2.

	League		1976/7	Goals
	Total	Cup		
Aleksic	49	2	17	
Aston	300	3	26(2)	10
Barber	142	1	15	
Buckley	91	3	34	3
Carr	—	—	(5)	
Chambers	106	3	29	2
Faulkner	169	3	32	
Futcher P.	111	3	34	1
Futcher R.	75	2	26(3)	10
Fuccillo	46	3	34	4
Geddis	5	—	5(4)	2
Hill	6	—	5(11)	3
Husband	266	3	29(3)	13
Jones	5	—	4(1)	
Knight	2	—	2	
Price	39	3	34	1
Ryan	194	—	10(2)	
West	178	2	28	3

# PLAYER PROFILE



**FULL NAME:** David Geddis  
**HEIGHT:** 5' 11½"  
**WEIGHT:** 11st. 6lb.  
**BIRTH DATE:** 12.3  
**BIRTH PLACE:** Carlisle.  
**STAR SIGN:** Pisces.  
**SIGNED AS PRO:** August '75.  
**PREVIOUS CLUBS:** Ipswich (Still).  
**LEAGUE DEBUT:** Luton v Blackburn, February 15th.  
**FAMILY:** Mum, Dad, brothers Michael, Mark.  
**HOBBIES:** Sport, Cars, Touring around.  
**FAVOURITE RECORDING STARS:** Marvin Gaye, Barry White, Soul Music  
**FAVOURITE FOOD:** I enjoy most foods.  
**FAVOURITE HOLIDAY RESORT:** Up to now Marbella Spain  
**MY GREATEST MOMENT:** Scoring winning goal for Luton v Oldham  
**MY FOOTBALL IDOL:** There are many players I admire  
**WHAT I WOULD LIKE TO HAPPEN IN FOOTBALL:** To be recognized as a top player. To add to my few international honours.





Travel by coach to  
all 'Town' away matches,  
both Cup and League.

# Tricentrol

Details in "Town Travel" or from  
Travel House, 25, West Side Centre,  
Luton.  
Telephone  
Luton 29171 & 25432

The Chairman and Directors welcome  
the founder members of the

## Kenilworth Suite Club

Richard C Larkinson, (Baldock) Ltd,  
Station Works, Baldock.  
Phone: Baldock 893158

Fine Stamps Ltd,  
Bilton Way Luton.  
Phone: 0582 36761

Mr M Watson-Challis,  
Blue Arrow Staff Bureau.

Mr E Fountain,  
Vauxhall Motors, Luton.

M Glenister Plant Ltd,  
A5 Kensworth,  
Tel: Dunstable 605025

D Filmer  
Filmergraphic Associates  
Alton Road, Luton.  
Tel: Luton 36407

Mr J Lester,  
Ashley Overhill Ltd,  
22 Midland Road,  
Luton

Robinson Metal (Luton) Ltd,  
Caleb Close, 464 Dunstable Rd  
Luton. Phone: 0582 53866

Mr P Saunders

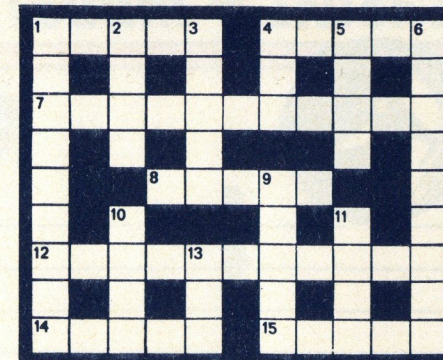
# Crossword NO.17

### CLUES - ACROSS

- 1 Famous old Scottish keeper -  
Morton's most capped player (5)
- 4 Southampton defender (5)
- 7 Member of ITV's soccer pro-  
duction team and author of "The  
Story of Football" (6,5)
- 8 Sheff Utd & Sunderland have  
this colour in common (5)
- 12 Blackpool buy from Bury (5,6)
- 14 Holds Lincoln's most League  
appearances record (402, 1946-59)  
(5)
- 15 Athletic attribute particularly  
associated with wingers but really  
needed by all players (5)

### Answers to Crossword No 16

Across: 1 Carrow Road (Norwich). 7  
Gary. 8 Dave. 9 lost. 14 Carr. 15  
Alex. 16 Ards. 17 Recreation.



### CLUES - DOWN

- 1 Div 4 club (9)
- 2 John - (Ipswich) (4)
- 3 Martin O'---- (Nottm For & N  
Ireland) (5)
- 4 Morrissey or McMahon (3)
- 5 Aberdeen manager:---- Mac-  
Leod (4)
- 6 Watford striker or stopper (9)
- 9 Pools firm (5)
- 10 ---- Haan (Anderlecht &  
Holland) (4)
- 11 Troublesome one forced Chel-  
sea's Hutchinson out of League  
soccer (4)
- 13 Post-war Liverpool manager (3)

Down. 2 aways. 3 Royle. 4 Wag-  
staffe. 5 Alan. 6 Ken. 10 Pratt. 11  
Pedro. 12 Ray. 13 Bene.

SPONSORED BY ANGLIA TELEVISION

## KNOW YOUR MILLWALL

- (a) Who is Millwall's most capped player?
- (b) Who has scored most League goals in total  
aggregate?
- (c) How many managers since the war?
- (d) What year were they Champions of Division 4?

Answers  
(a) Eamonn Dunphy, 27 Eire.  
(b) Derrick Possee, 79, 1967-73.  
(c) 8 J. Cock, C. Hewitt, R. Gray, J. Seed, Reg  
Smith, Billy Gray, Benny Fenton and Gordon  
Jago.  
(d) 1961-2.

# TOWN TRAVEL

## CARDIFF CITY v LUTON TOWN

Saturday 16th April 1977. K.O. 3 p.m.

By car: Leave Luton on M1 going South. Leave M1 at junction  
6, proceeding towards Watford then Slough A405 and North  
Orbital Rd. At Slough join the M4 Motorway going West. Pass  
Membury Services (80 miles from Luton) Leigh Delamere Ser-  
vices (112 miles from Luton) Cross Severn Bridge (Toll 12p.)  
Leave M4 at Junction 28, 9 miles to Cardiff. Enter the City on  
the A48 along Queen St. over the River Taff. Turn left on to the  
A4161, then turn left again on the A4055 signposted Penarth.  
Ninian Park is situated on your left in Sloper Rd. Distance from  
Luton 164 miles.

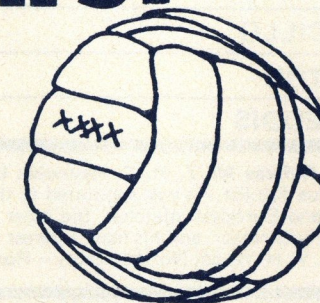
TRICENTROL COACHES  
Leave The Square, Dunstable 10 a.m.  
Maple Rd., Luton 10 a.m.  
Fare £3.

# always in the first division

UNIBRAZE WELDING MATERIALS AND EQUIPMENT ARE  
THE ONES TO KICK OFF WITH.

FOR ANY INFORMATION YOU NEED ON SPECIAL ITEMS, OR  
DETAILS OF YOUR NEAREST UNIBRAZE DISTRIBUTOR -  
GIVE US A RING AT HADLEIGH.

- OUR TECHNICAL STAFF ARE REALLY ON THE BALL!



## UNIBRAZE (U.K.) LTD.

LADY LANE INDUSTRIAL ESTATE  
HADLEIGH · IPSWICH SFK 1P7 6LS  
TEL. HAD(047 338) 2424/7  
TELEX 987788





# RICHARDS & THIRKELL

(Luton) Ltd.  
Clarendon Road,  
Luton, Bedfordshire.

The Greatest Name In  
Sporting Headwear

## SPORTS - CASUAL - INDUSTRIAL - HEADWEAR



# LUTON

# Millwall

MILIJA ALEKSIC

PAUL PRICE

STEVE BUCKLEY

BRIAN CHAMBERS

JOHN FAULKNER

PAUL FUTCHER

JIMMY HUSBAND

ALAN WEST

RON FUTCHER

LIL. FUCCILLO

JOHN ASTON

DAVID GEDDIS

1  
2  
3  
4  
5  
6  
7  
8  
9  
10  
11  
12

RAY GODDARD

DAVE DONALDSON

JOHN MOORE

TERRY BRISLEY

BARRY KITCHENER

TONY HAZELL

TREVOR LEE

JOHN SEASMAN

ROGER CROSS

PHIL WALKER

DERRICK JEFFERIES

**OFFICIALS:** Referee Mr T. H. C. Reynolds (Swansea). Started refereeing in Bristol in 1957 and graduated via the Welsh League and Football League full list. He was appointed to the U.E.F.A. and F.I.F.A. Referees Panel in 1974. Has refereed a number of Football League, International and European matches, the most recent being last season's Home Championship match - Ireland v Scotland. A married man he is a Company Director, and his main interest is in football.

**Linesmen:** Mr. V. H. Wood, Northampton - Red flag; Mr. J. J. R. Barker, Northampton - Yellow flag.

# SCOREBOARD

Bristol C. ....	Tottenham	Burnley .....	Bolton W.	Sheffield Utd. ....	Blackpool
Leicester C. ....	Derby C.	Carlisle .....	Oldham A.	Aldershot. ....	Watford
Stoke City .....	Leeds U.	Hull City .....	Blackburn R.	Huddersfield T. ....	Cambridge Utd.